

CV:31A Vibration Meter User Manual



This manual, the software to which it relates, the
program code and drawings are all:
© Copyright Cirrus Research plc 1989-2017

The content of this manual, any illustrations, technical information and descriptions within this document were correct at the time of going to print. Cirrus Research plc reserves the right to make any changes necessary, without notice, in line with the policy of continuing product development and improvement.

No part of this publication may be duplicated, reprinted, stored in a data processing system or transmitted by electronic, mechanical, photographic or other means, or recorded, translated, edited, abridged or expanded without the prior written consent of Cirrus Research plc.

No liability is accepted for any inaccuracies or omissions in this manual, although due care has been taken to ensure that it is complete and accurate as possible.

Accessories supplied by Cirrus Research plc have been designed for use with the instrumentation manufactured by Cirrus Research plc. No responsibility is accepted for damage caused by the use of any other parts or accessories.

In order to take account of a policy of continual development, Cirrus Research plc reserves the right to change any of the information contained in this publication without prior notice.

Produced by Cirrus Research plc, Acoustic House, Bridlington Road, Hunmanby, North Yorkshire, YO14 0PH, United Kingdom.

© Copyright Cirrus Research plc 2017

Reference Number 03/17/CV31A/03

Document Printing Date Wednesday, 22 March 2017

Introduction	5
Instrument Overview	5
Getting started with the CV:31A	6
Switching on and Connecting the Sensor	6
Hand-Arm Vibration Measurement with the CV:31A	7
Measuring Points for Hand-Arm Vibration	7
CV:31A Settings for Hand-Arm Vibration measurements	8
Whole-Body Measurement with the CV:31A	10
Measuring Points for Whole-Body Vibration	10
CV:31A Settings for Whole-Body vibration measurements	11
Whole-Body Measurement with RMS Values	11
Whole-Body Vibration Measurement with VDV Values	13
Seat Effective Amplitude Transmissibility (SEAT).....	14
General Vibration Measurement	15
Data Logger.....	18
Frequency Analysis.....	19
Instrument Settings	19
Sensor Calibration	19
Time & Date	20
Shut-off Timer	20
Battery Type.....	20
Battery Replacement	21
Display Brightness.....	22
Language	22
Default Settings	22
Data Memory	23
Measurement data memory	23
Data Logger Memory	23
FFT Data Memory	24
Keypad Lock	24
Instrument Reset	24
Data Transfer to a PC	25
Connection to a PC	25
Opening the Excel File CV31.xlsm.....	25
Data import to the Excel worksheet	26
Calculation of Vibration Exposure A(8) and VDV(8)	27
Data Logger Import	28
FFT Import	30
Appendix 1 Fundamentals of Human Vibration Measurement.....	31
Introduction.....	31
EU Occupational Health Directive 2002/44/EC.....	31
Exposure Limit Values	32
Appendix 2 Weighting Filters.....	36
Hand-arm weighting filter W_h	36
Whole-body weighting filter W_d	36
Whole-body weighting filter W_k	37
Whole-body weighting filter W_b for passenger trains.....	37
Whole-body weighting filter W_c for the backrest of seats	38
Whole-body weighting filter W_j for the head of recumbent persons	38
Whole-body weighting filter W_m for persons in buildings	39
Appendix 3 Specifications.....	40
Appendix 4 CE Declaration of Conformity	41

Warranty Information	42
Cirrus Research Offices	43

Introduction

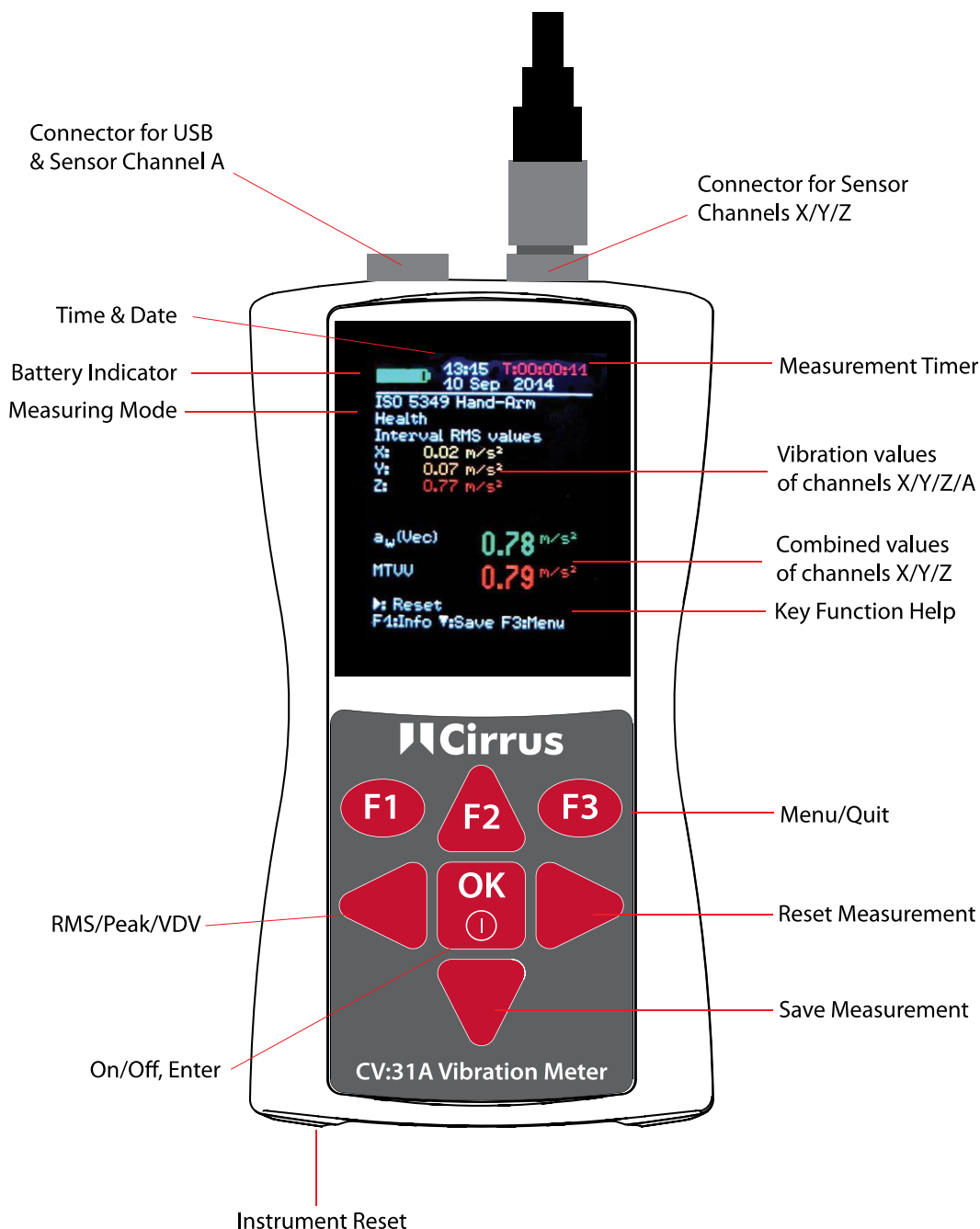
The CV:31A has been developed for the measurement and analysis of human vibration. It can also be used for a range of other applications including machine condition monitoring, building vibration measurement and quality control.

In combination with a tri-axial accelerometer, hand-arm and whole-body vibrations can be measured in compliance with ISO 5349, ISO 2631 and the EU Directive 2002/44/EC.

A fourth measuring channel can be used, for example, for SEAT measurements (seat effective acceleration transmissibility). The CV:31A meets the requirements for human vibration meters in compliance with ISO 8041.

Note that the Excel Macro version 2.1 or later is required to download the information stored by the data logger.

Instrument Overview



Getting started with the CV:31A

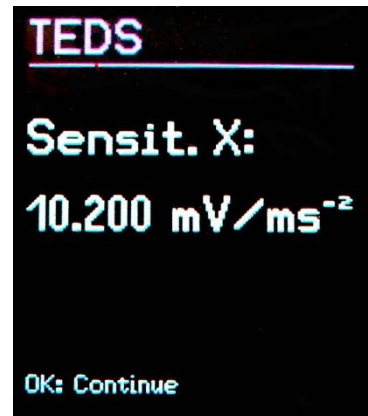
Switching on and Connecting the Sensor

Switch on the CV:31A by pressing the ON/OFF key.

If the sensor has not yet been connected, plug the sensor cable into the right connector.

The CV:31A will start TEDS¹ detection if the sensor is compatible with IEEE 1451.4 Template 25.

It will automatically read the three sensitivities of the X/Y/Z directions. Confirm the sensitivities by pressing OK.



The sensors KD:103 and KD:903 accelerometers available for the the CV:31A feature TEDS (Transducer Electronic Data Sheet) which allow the instrument to read calibration information from the sensor.

Should a connected sensor not have TEDS, the CV:31A will open a menu for entering the sensitivities manually.

The sensitivities entered remain stored as long as the sensor is connected, even if the batteries are removed.

Sensor detection will only take place if the display showed "SENSOR!" before a new sensor was connected.

The warning "SENSOR!" may also indicate a defective sensor or a broken sensor cable.

Sensor condition is detected by means of the bias voltage at the sensor output:

< 0.7 V:	short circuit
0,7 – 14 V:	normal
>14 V:	open, e.g. broken cable

Please note that the settling time after connecting a sensor is about 1 minute.

The CV:31A is suitable for connecting any low power IEPE accelerometers which can be operated with a 1 mA supply current. The internal compliance voltage of the current sources is 18 VDC.

Hand-Arm Vibration Measurement with the CV:31A

This section will give you basic instructions for the measurement and evaluation of hand-arm vibrations based on the standard ISO 5349 and the guideline VDI 2057, Part 2.

Please consult the original documents for detailed explanations.

Measuring Points for Hand-Arm Vibration

The sensors should be attached as close as possible to the gripping points of the hand, however, they must not interfere with the work process.

Measurements should be performed with the same hand pressure force as used under normal operating conditions.

Since most machine tool handles do not provide surfaces for the adhesive or screw attachment of sensors, Cirrus offers some mounting accessories for curved surfaces.

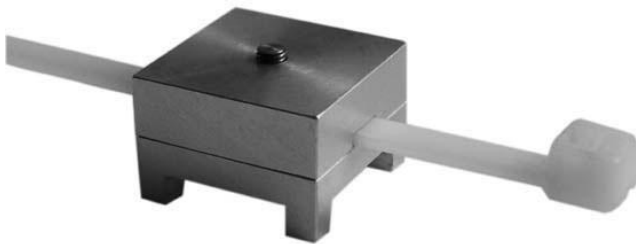


Figure 7: Handle adapter ML:311



Figure 8: Handle adapter ML:312

The adapter ML:311 is attached with a plastic cable strap. The ML:312 is pressed onto the handle by the hand.

Close contact between the sensor and the machine is of great importance. Any motion of the sensor would distort the measurement.

Figure 9 shows the axis directions for attaching the sensor to the handle. For cylindrical handles the Y direction points in the direction of the handle axis. The Z axis is approximately the extension of the third metacarpal bone.

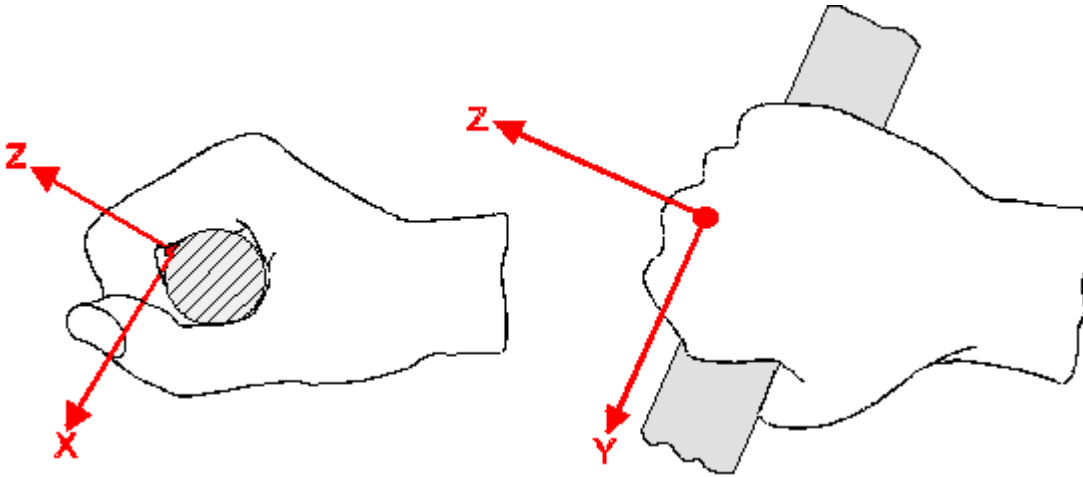


Figure 9: Coordinate system of the hand (from ISO 5349-1)

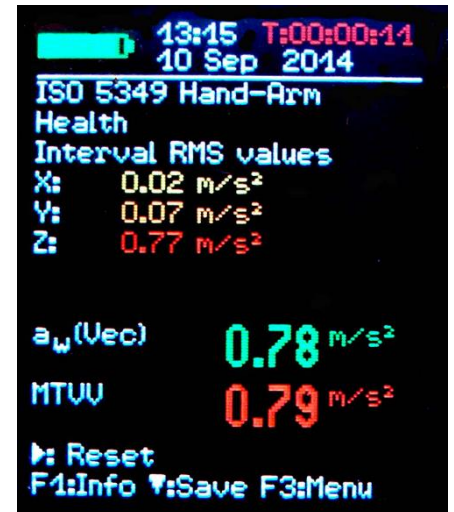
CV:31A Settings for Hand-Arm Vibration measurements

For the evaluation of hand-arm vibration it is recommended to measure both the interval RMS values of X/Y/Z and their vector sum a_w .

The vector sum of the RMS values is displayed on the screen as $a_w(\text{Vec})$.

This is also known as a_{hv} as described in ISO 5349-1:2001.

The CV:31A measures these four values simultaneously. In addition it shows the maximum running RMS (Maximum Transient Vibration Value, MTVV) which may indicate the presence of shock vibration.



The frequency weighting for hand-arm vibration is W_h .

Appendix 2 shows the filters of the CV:31A and the tolerance bands to ISO 5349.

Press the F3 key to open the main menu and select
 Human vibration
 Hand-Arm ISO 5349
 Health

After returning to the measurement screen you can check the settings by pressing F1.

Measurements can begin when the sensor and the worker's hands have been placed on the handle of the object carrying out the operation. To start the measurement press the key ► (Reset). This will result in the following:

- the RMS values of X/Y/Z, the vector sum a_w and MTVV reset to zero
- the measurement timer restarts

Pressing Reset before a measurement is mandatory to establish defined start conditions.

The RMS values of X/Y/Z and the vector sum are averaged over the entire measuring time. That's why fluctuation becomes less the longer the measurement takes. After a while short shock pulses have almost no influence on the displayed results.

Recommended measuring time for hand-arm vibration is at least 60 seconds. The measuring timer in the upper right corner remains red until 60 seconds have elapsed.

"**OVERLOAD**" is indicated instead of the measuring values if the current magnitude is too high. Even if the overload condition was of short duration the measured interval RMS value may become invalid because of missing samples.

An overload event during the entire averaging time is indicated by "OVL!" in the upper right corner after the date. This warning can be deleted by pressing the key ► (Reset).

After measurement you may save the results by pressing the key ▼. Measurement should be continued or finished immediately before pressing the key, otherwise the measuring values will drop slowly.

You will be asked to enter two lines of ten capital letters or numbers as a comment. Use the keys ◀▲▼▶ to select characters and to change the input position.

Press F1 to change the input line. Measurement can be finished before entering the comment because the results have already been saved when pressing the key ▼.



Measurements can only be saved if a sensor is detected at X/Y/Z and if there is no overload condition. In these cases the CV:31A will display "Sensor error" or "Overload occurred" instead of saving in order to avoid invalid recordings.

If an overload occurred since the last reset ("OVL!" in upper right corner) the instrument will show a warning "Overload occurred after last reset! Save anyway?".

If you want to measure several partial exposures you may do further measurements

For the calculation of **vibration exposure A(8)** and to store results on a PC the Excel macro file is provided. See page 25 for details of transferring measurement to a PC.

The fourth channel (A) of the CV:31A is not active when hand-arm vibration is measured.

Whole-Body Measurement with the CV:31A

This section will give you basic instructions for the measurement and evaluation of whole-body vibrations based on the standard ISO 2631 and the guideline VDI 2057, Part 1. Please consult the original documents for detailed explanations.

The described method is suitable for all vibrations acting on the human body. It is not suited for vibration containing occasional shocks or for impacts such as car crashes. Vibrations transmitted via the hands are described separately in the previous section.

Measuring Points for Whole-Body Vibration

Whole-body vibration is usually measured with seat pad accelerometers. These are triaxial piezoelectric sensors built into a flat rubber pad, which adapt themselves to the interface between the vibration source and the test person (Figure 4).

The following measuring points are suitable:

- On the seat surface under a seated person
- On the back rest behind a seated person
- Under the feet of a seated person
- Under the feet of a standing person
- Under the pelvis of a recumbent person
- Under the head of a recumbent person
-

Figure 13 shows the coordinate systems for whole-body vibration to ISO 2631. As can be seen from the drawing, the Z axis always points in the direction of the spinal column.

The vibration sensor has to be placed accordingly. A special case is measurement at the backrest (see notice below Table 2 on page 10).

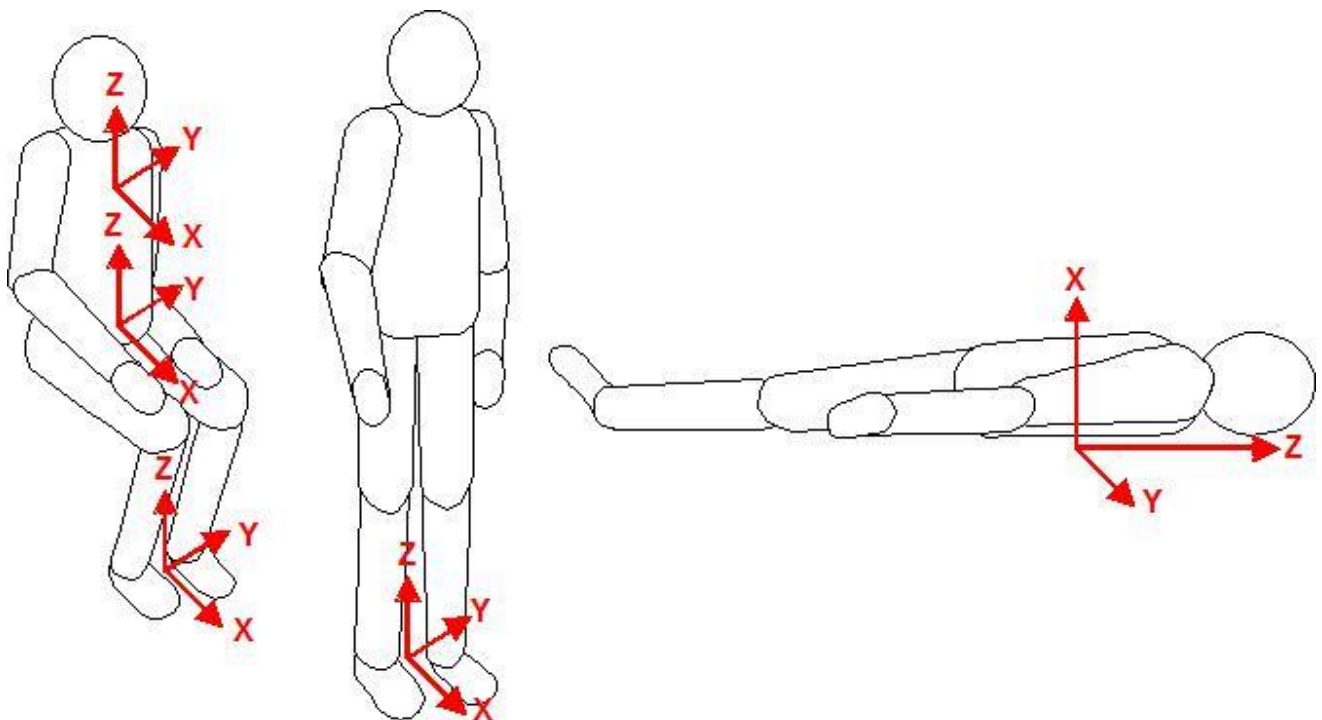


Figure 13: Coordinate systems for whole-body vibration to ISO 2631

Table 2 shows the weighting filters and factors to be used for different postures and positions.

Whole-Body Health Evaluation				
Posture	Position	Direction	Frequency weighting	Weighting factor (k)
sitting	seat surface	X / Y	W_d	1.4
		Z	W_k	1
Whole-Body Comfort Evaluation				
sitting	seat surface	X / Y	W_d	1
		Z	W_k	1
	feet platform	X / Y	W_k	0.25
		Z		0.4
backrest		X*	W_c	0.8
		Y	W_d	0.5
		Z*	W_d	0.4
standing	feet platform	X / Y	W_d	1
		Z	W_k	1
recumbent	under pelvis	X (vertical)	W_k	1
		Y / Z (horizontal)	W_d	1
	under head	X (vertical)	W_j	1
In railway vehicles:				
standing	feet platform seat/backrest/feet support. surface, pelvis/head	X / Y / Z	W_b	1
sitting				
recumbent				
In buildings:				
undefined	in buildings	X / Y / Z	W_m	1

Table 2: Weighting filters and factors for whole-body vibration

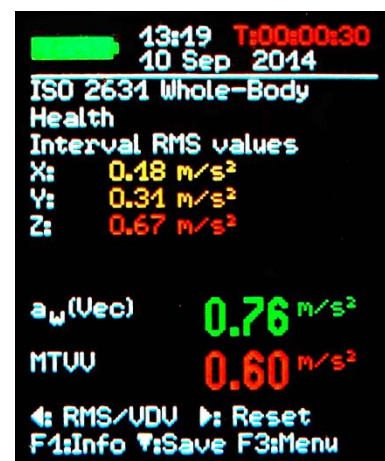
* Please note that the Z axis points along the backbone for all measurements. For measurements at the backrest with a seat pad accelerometer the sensor will always be in a vertical position with Z perpendicular to the backbone. However, to compensate the VM31 automatically swaps the X and Z axis for backrest measurement.

CV:31A Settings for Whole-Body vibration measurements

Whole-Body Measurement with RMS Values

For the evaluation of hand-arm vibration it is recommended to measure both the interval RMS values of X/Y/Z and their vector sum a_w . The VM31 measures these four values simultaneously. In addition it shows the maximum running RMS (Maximum Transient Vibration Value, MTVV) which may indicate the presence of shock vibration.

The following section explains the measurement of whole-body vibration in terms of health risks. Health evaluation is done with weighting filter W_d for X/Y and W_k for Z and with weighting factors 1.4 for X/Y and 1.0 for Z.



Appendix 2 show the frequency response curves of the filters Wd and Wk in VM31 and the tolerance bands in compliance with ISO 8041.

In addition to health evaluation the VM31 also supports measurements regarding comfort. This type of measurement uses other postures, sensor positions and different frequency weightings but the general procedure is the same.

Appendix 2 shows the frequency response curves of the weighting filters for comfort measurements.

To start whole-body vibration measurement for the assessment of health risks open the main menu by pressing F3, and select "Measuring mode" / "Human vibration" / "Whole-body ISO 2631" / "Health".

From this menu you will return to the measuring screen. You may press F1 to check your settings.

Press the key ◀ to switch from VDV to RMS if necessary.

If the worker being tested is sitting in the right position and vibration exposure has started, press the key ▶ key (Reset) to:

- reset the RMS values of X/Y/Z, the vector sum a_w and MTVV to zero
- restart the measurement timer.

Always press Reset before a measurement to establish the defined start conditions.

The RMS values of X/Y/Z and the vector sum are averaged over the entire measuring time. That's why fluctuation becomes less the longer the measurement takes. After a while short shock pulses have almost no influence on the the displayed results anymore.

The recommended measuring time for hand-arm vibration is at least 2 minutes. To alert you, the timer in the upper right corner remains red until 2 minutes have elapsed.

"OVERLOAD" is indicated instead of the measuring values if the current magnitude is too high. Even if the overload condition was of short duration the measured interval RMS value may become invalid because of missing samples.

An overload event during the entire averaging time is indicated by "OVL!" in the upper right corner after the date. This warning can be deleted by pressing the key ▶ (Reset).

After measurement you may save the results by pressing the key ▼. Measurement should be either continued or finished immediately before pressing the key, otherwise the measuring values will drop slowly. You will be asked to enter two lines of ten capital letters or numbers as a comment.

Use the keys ◀▲▼▶ to select characters and to change the input position. Press F1 to change the input line.

Measurement can be finished before entering a comment because the results will have already been saved by pressing the key ▼.

Measurements can only be saved if a sensor is detected at X/Y/Z and if there is no overload condition. In these cases the CV:31A will display "Sensor error" or "Overload occurred" instead of saving in order to avoid invalid recordings.

If an overload occurred since the last reset ("OVL!" in upper right corner) the instrument will show a warning "Overload occurred after last reset! Save anyway?".

If you want to measure several partial exposures you may now do further measurements.

For the calculation of **vibration exposure A(8)** and to store results on a PC the Excel macro file cv31.xlsm is provided.

Whole-Body Vibration Measurement with VDV Values

The CV:31A also allows whole-body vibration to be measured as vibration dose values (VDV). These are fourth power mean values. VDV is more sensitive to peaks. The measuring unit of VDV is $m/s^{1.75}$.

$$VDV = \sqrt[4]{\int_0^T a_w^4(t) dt}$$

Equation 11

Press the key ◀ to switch from RMS to VDV and vice versa.

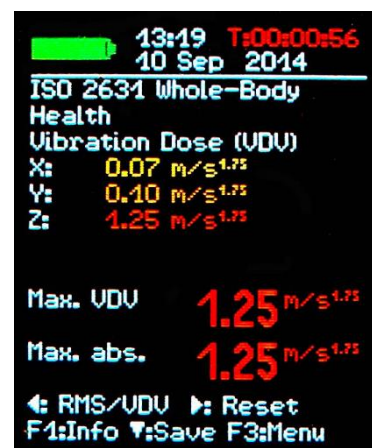
The same weighting filters and factors as for RMS measurement are used. You may press F1 to check your settings.

The device displays VDV values for the directions X/Y/Z. In addition the highest of the three axis values (Max. VDV) and the highest VDV since the last reset (Max. abs.) are displayed.

VDV measurements need to be started by pressing the key ▶ (Reset).

Measurements can be saved by pressing the key ▼ (see page 17).

The Excel file vm31.xlsm also allows the calculation of vibration exposure based on VDV measurements.



Seat Effective Amplitude Transmissibility (SEAT)

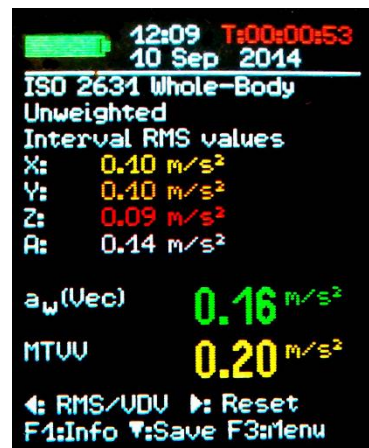
The Seat Effective Amplitude Transmissibility (SEAT) value is the ratio of the vibration experienced on top of the seat and the vibration that one would be exposed to when sitting directly on the vibrating floor.

Both vibration magnitudes are measured in the vertical direction (Z) only. SEAT values are widely used to determine the vibration isolation efficiency of a seat.

The fourth channel (A) of the CV:31A in combination with a uniaxial accelerometer can be used to determine SEAT values.

It is connected via a sensor cable to the left socket (see Figure 1). The fourth channel is named "A" on the display. The sensitivity of a TEDS sensor will be automatically detected. With a non-TEDS sensor it needs to be entered manually.

Select "Whole-body ISO 2631" / "Unweighted" for channels X/Y/Z. Channel A does not have frequency weightings. Its frequency range (-3 dB) is 0.8 to 250 Hz. The RMS or VDV of channel A is displayed below channels X/Y/Z.



General Vibration Measurement

In addition to its human vibration ranges the CV:31A can measure:

- Vibration acceleration from 0.1 to 2000 Hz and 1 to 1000 Hz,
- Vibration velocity from 1 to 100 Hz, 2 to 1000 Hz and 10 to 1000 Hz,
- Vibration displacement from 5 to 200 Hz.

Press F3 to open the menu, select "Measuring mode" and use the keys ▲▼ to select the vibration range.

You can switch the measuring screen from RMS to peak display by pressing the key ◀. Please note that the RMS and peak values in the general vibration ranges are computed over the last display cycle (not over a long period).

A display cycle can be between 1 and 4 seconds, depending on the frequency range.

RMS or peak values are shown for X/Y/Z. There will also be an RMS or peak value for channel A if you have connected a sensor to this input.

Channel A always measures acceleration. Its frequency range depends on the mode selected for X/Y/Z (Table 3).

Mode X/Y/Z	Frequency range X/Y/Z	Frequency range A
Acceleration	0.1 to 2000 Hz	0.1 to 2000 Hz
Acceleration	1 to 1000 Hz	3 to 1000 Hz
Velocity	1 to 100 Hz	1 to 250 Hz
Velocity	2 to 1000 Hz	2.5 to 750 Hz
Velocity	10 to 1000 Hz	2.5 to 750 Hz
Displacement	5 to 200 Hz	1 to 250 Hz

Table 3: Frequency ranges of channel A

Vibration velocity is computed by single integration of the acceleration signal, displacement by double integration.

Due to integration there is a strong attenuation at high frequencies which limits the measurable frequencies, particularly for displacement.

Low frequencies, including noise, are strongly amplified. High pass filtering is inevitable. The frequency response curves of the general vibration ranges can be seen in Figures 24, 25 and 26.

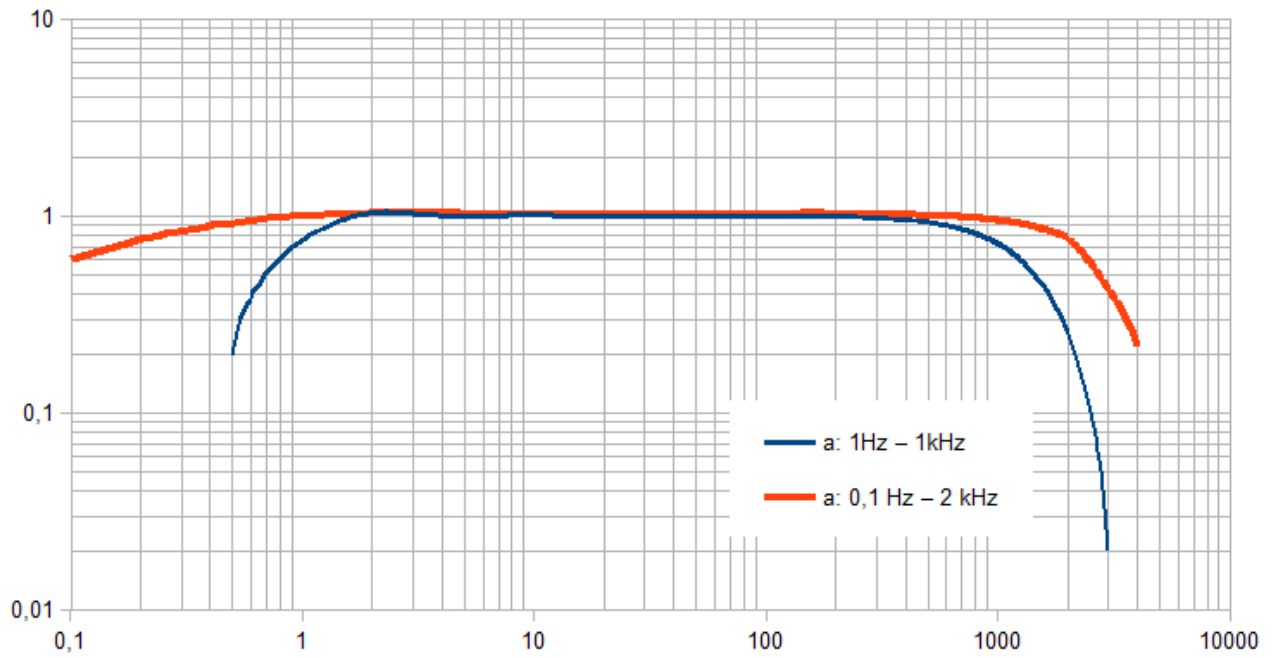


Figure 24: Frequency ranges of vibration acceleration

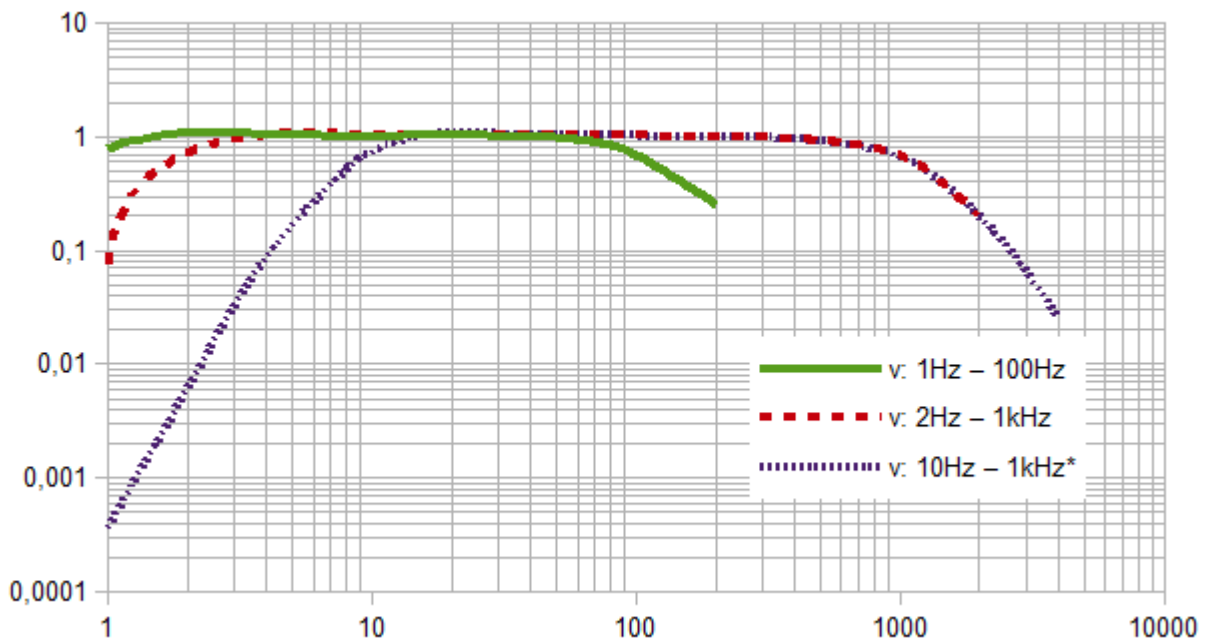


Figure 25: Frequency ranges of vibration velocity

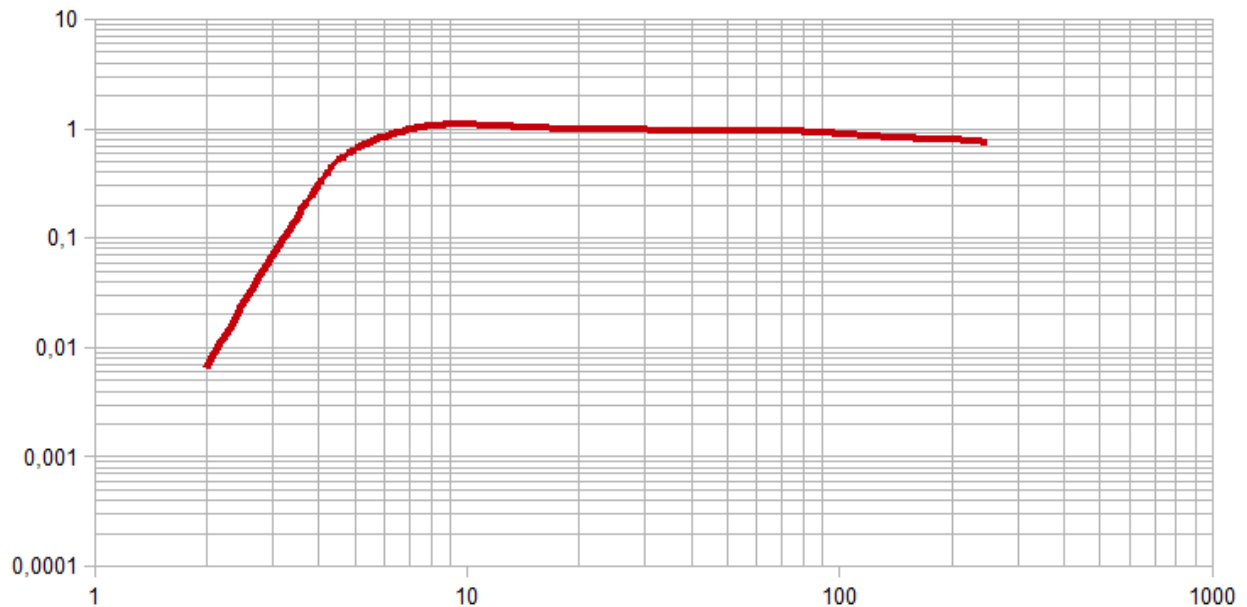


Figure 26: Frequency range of vibration displacement (upper end due to resolution)

Vibration quantity and frequency range can be checked by pressing F1.

Below the 3 (or 4) RMS or peak values you can see two combined values which are calculated from X/Y/Z. These are:

- in RMS mode the vector sum of X/Y/Z ($a_w(\text{Vec})$) and the highest RMS value (Max. abs.) since the last press of the Reset key ►.
- in peak mode the highest of the currently displayed XYZ peak values (Max. XYZ) and the highest peak value (Max. abs.) since the last Reset ►.

Maximum values are displayed in the colour of the channel where they occurred.

Pressing the Reset key ►

- deletes the maximum values and
- restarts the measuring timer

Measurements can be saved by pressing the key ▼

Data Logger

The CV:31A can automatically record measuring data for channels X/Y/Z at the speed of the display refresh rate.

It can log running RMS or peak values. Logging can be useful in combination with human vibration measurement to detect single vibration or shock events during a longer measuring period.

For example, the log file can help to identify shocks caused by putting down a machine tool.

Such single events can significantly change the interval RMS value without being relevant in terms of health risks.

The instrument stores data and time along with the three values of X/Y/Z. The recorded measurements are filtered with the same weighting or band filter used for the displayed measurements. Channel A is not recorded.

Please note that the logged data is calculated only for the last display interval (approx. 1 s). For human vibration, however, interval RMS values are measured which are integrated over the entire measuring time.

Therefore there may be differences between the displayed and the recorded values.

To start the data logger press F3 to open the main menu, select "Data memory" / "Data logger" / "Start logging" (Figure 28). You will be prompted to select a file number.

This number will be used later on to identify the log file. The memory can hold 100 log files. File numbers can be 00 to 99.

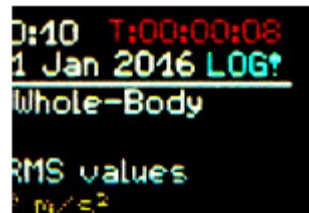
If the selected file should already contain data you will be asked to delete it. Now you select whether RMS or peak values are to be logged. Press OK to leave the menu and to start logging. After a settling time the unit will start to record measurements.

The active log mode is indicated in the upper right display corner by the text "LOG!" (Figure 29).

Logging can be stopped by pressing F3.

Please note that the data logger will be halted while data is transferred via the USB interface. This may result in missing records. The automatic shut-off function is not in use while logging.

The maximum number of records per log file is 32,000 which is sufficient for about 10 hours of continuous recording.



Frequency Analysis

The CV:31A provides a simple FFT function for the detection of main frequencies. It displays a 125 line peak spectrum of acceleration.

Press F3 and select "Frequency analysis" to open the FFT screen (Figure 27). You see the frequency components of channels X/Y/Z in their respective channel colors.

The line above the diagram shows frequency and magnitude of the longest spectral line.

The keys ◀▶ move the cursor. Below the diagram you can see the cursor readout.

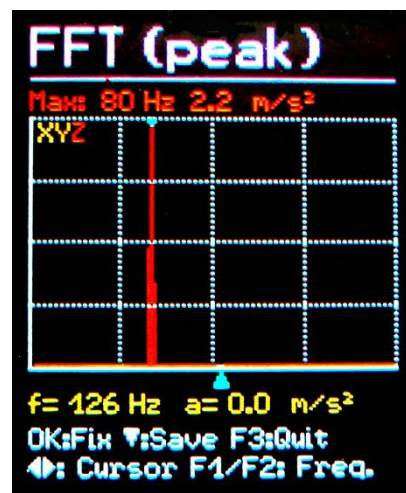
Press F1 or F2 to change the frequency range. Four ranges are selectable:

- 3 to 244 Hz
- 7 to 488 Hz
- 15 to 977 Hz
- 30 to 1954 Hz

Pressing the key ▼ saves the spectrum. The CV:31A can store up to 1000 FFT measurements.

To view stored FFTs press F3 to open the menu and select "Data memory" / "View/delete FFT data". Use the keys ▲▼ to select the desired FFT. A cursor function using the keys ◀▶ is also available.

Stored FFT data can be transferred to a PC. There is no FFT function for channel A.



Instrument Settings

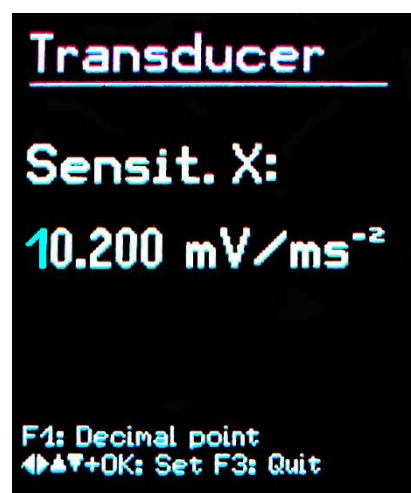
Sensor Calibration

If a connected sensor is not TEDS compatible, the CV:31A will automatically open the menu "Transducer calibration".

It can also be opened from the menu "Device settings" to check or to change the entered sensitivities.

Sensitivities are entered one after another for channels X/Y/Z and, if connected, for channel A. The sensitivity value is a five-digit number with the measuring unit mV/ms^{-2} . You find the correct values in the transducer calibration sheet.

The decimal point can be shifted by pressing F1. The allowed sensitivity range is 0.800 to 12.000 mV/ms^{-2} or 8.00 to 120.00 mV/ms^{-2} .



Time & Date

When saving measurement values the date and time need to be correctly recorded. To set the date and time, open the main menu by pressing F3 and select "Device settings". Within this sub menu select "Date and time".

Using keys ▲▼ you can adjust the chosen value. Upon reaching the maximum value, e.g. in the 23rd hour, the counter starts again from the beginning. Press ◀▶ to skip between hour, minute, month, day and year. The date takes account of the leap year. It is, however, important to ensure that no invalid day-month combinations are entered.

Additionally, clock inaccuracy can be corrected. This can be done using the setting at "Cal." in ppm (parts per million). The clock frequency can be increased with positive values and decreased with negative. The sign changes to minus at +254 ppm.



Shut-off Timer

The CV:31A has a shut-off timer to help prolong the battery operating life. To set the shut-off timer, open the main menu by pressing F3, select "Device settings" and "Shut-off timer".

Press keys ▼▲ to select the timer duration from the options 1, 5, 15 and 60 minutes. To deactivate the timer select ('none'). The switch off timer starts to run after the last press of a button. If a button is pressed the timer will restart the count down for the set duration.



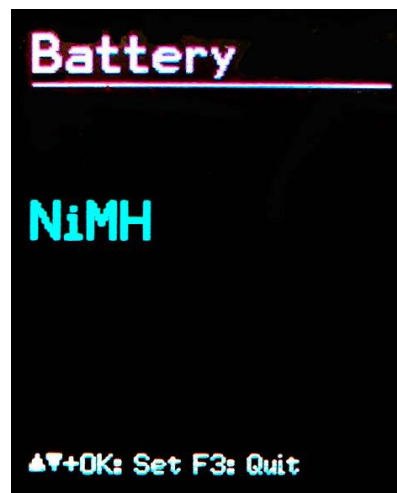
Battery Type

While non-rechargeable batteries have a cell voltage of 1.5 V, NiMH rechargeable batteries deliver only 1.2 V per cell. The CV:31A battery indicator can be adjusted to both voltages. To adjust the voltage, open the main menu by pressing F3, select "Device settings" and "Battery type".

Within the sub-menu select "Battery type" pressing ▼ selects between "Alkaline" (non-rechargeable, 1.5 V) or "NiMH" (rechargeable, 1.2 V).

If the power supply drops below 3.3 V when using alkaline batteries or below 3 V with rechargeable batteries, the battery indicator becomes red.

Further measurements can be taken until the power supply reaches 2.8 V in keeping with the device specifications. At this point the battery level indicator is completely empty and the device switches itself off automatically.



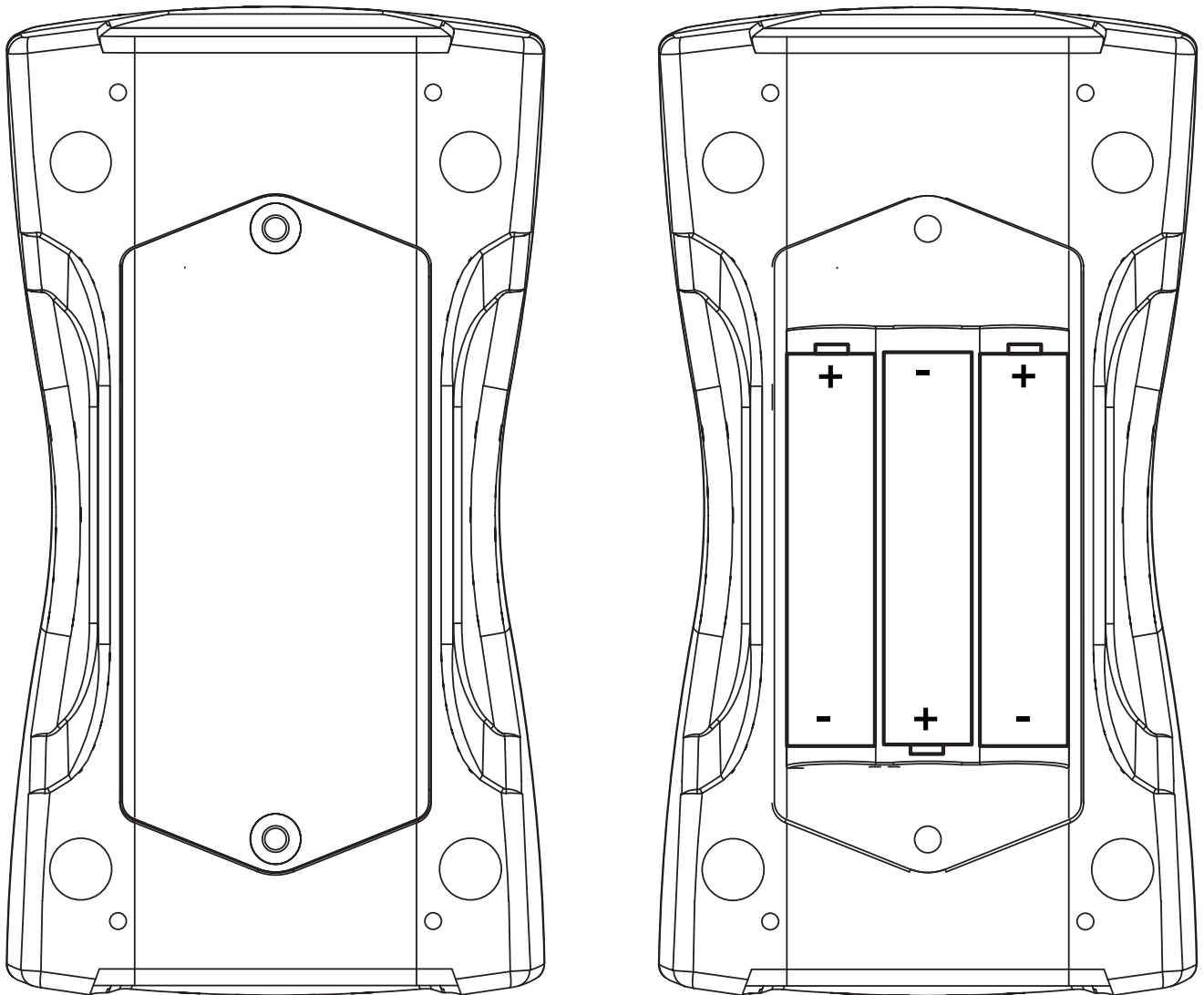
Battery Replacement

The CV:31A is powered from three standard alkaline batteries size AAA (LR03).

Alternatively rechargeable NiMH batteries of type HR03 can be inserted.

Precise operation is guaranteed until the batteries are almost completely discharged. Please note that date and time need to be adjusted after replacing the batteries. All other settings, including saved measurements, remain stored after removing the batteries.

To insert the batteries, remove the two screws from the back cover of the device and open the battery compartment.



When inserting the batteries, please ensure that their polarity is correct, (see the engraved markings inside the compartment).

Important:

- Always use three batteries of the same type and same date of manufacture.

- Remove old batteries from the device, and take out the batteries if the device will not be used for a long period of time. Otherwise leaking battery acid may cause severe damage to the device.

A battery indicator can be found in the upper left corner of the display.

A green filled battery symbol indicates a fully charged battery. When the symbol becomes red only a small portion of power remains and the unit will switch-off soon.

If the CV:31A is connected to a USB interface, it will be powered via USB to save the batteries. In this case "Extern" is shown instead of the battery symbol.

Display Brightness

In the menu "Device settings"/ "Display brightness", press the keys ◀▶ to adjust the display settings according to your working environment.

The main purpose of reducing display brightness is to save battery power. Current consumption increases by approximately 20 % between the minimum and maximum setting. The difference can be even higher, depending on the display content.

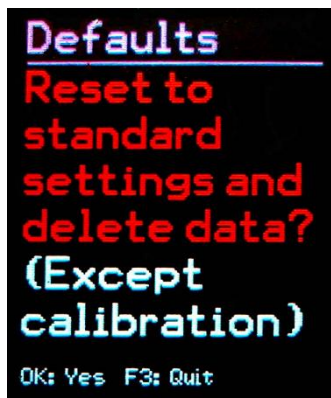


Language

Open the menu "Device settings" / "Menu language" to change the display language. The available languages depend on the firmware installed.

Default Settings

If you would like to reset your CV:31A to factory settings, open the menu "Device settings" / "Load defaults". This will also delete the memory but will not alter the transducer sensitivities.



Data Memory

Measurement data memory

The CV:31A memory store up to 10,000 data records. A record includes:

- Date and time
- Comment (20 characters)
- Filter and measuring mode
- Measuring values X/Y/Z and, if available, channel A and 2 combined values (vector sum and maximum value)

Saved data can be viewed on the screen. Press F3 and select "Data memory" / "View/delete measurement". Use the keys ▲▼ to navigate through the records.

Single records can be erased by pressing ◀. Erasing means the record is not displayed anymore.

Its memory position, however, will not be released until the entire memory is erased.

This can be done in the menu "Data memory" / "Delete memory". Please note that the FFT records will also be erased.

Measurements can be downloaded using the supplied Excel Macro. See page 25 for details of downloading measurements.



Data Logger Memory

To view stored logger data press F3 to open the menu and select "Data memory" / "Data logger". In this menu open "View logger data".

Use the keys to select the log file to be opened. The menu shows date and time of start, the used recording mode (RMS or Peak), the measuring mode and the filter settings. Press OK to open a selected file.

A file can be deleted by pressing F1. After opening a log file you can view the contained measurements Use the ▲▼ keys to select a record.

The menu shows the record number and the total number of records, date and time of recording and the measuring values X/Y/Z.



Measurements can be downloaded using the supplied Excel Macro. See page 25 for details of downloading measurements.

FFT Data Memory

To view stored FFTs press F3 to open the menu and select "Data memory" / "View/delete FFT data". Use the keys ▲▼ to select the desired FFT. A cursor function using the keys ◀▶ is also available.

Measurements can be downloaded using the supplied Excel Macro. See page 25 for details of downloading measurements.

Keypad Lock

To prevent manipulation during ongoing measurement, it can be advantageous to activate the key lock.

This function can be found in the main menu under "Key lock"

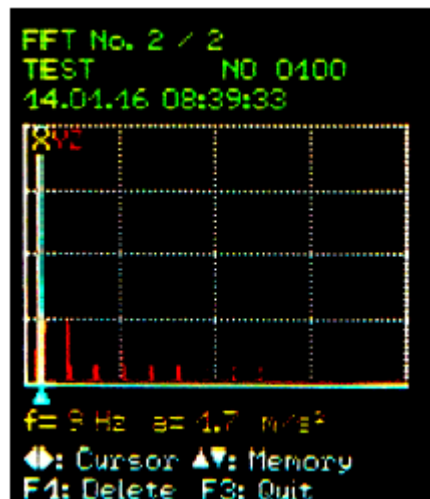
To release the key lock press all four arrow keys ◀▲▼▶ simultaneously, until the device displays "unlocked".

Instrument Reset

If the CV:31A does not respond to the press of any key, use the reset key to restart the device.

The reset key is reached with a thin object through the aperture next to the type label.

Saved data and settings are not lost when the device is reset.



Data Transfer to a PC

Connection to a PC

The CV:31A has a USB interface. The supplied ZL:311 USB cable is connected to the CV:31A via its 8 pin connector. Switch the device off before connecting it to the PC.



Connect the other end of the cable to a USB port on the computer and switch the CV:31A on again. If the device is being connected with a particular computer for the first time, a driver installation will be necessary.

The driver MMF_VCP.zip is provided on the CD/DVD supplied with the instrument.

Unpack and save both driver files in a directory on your computer.

When Windows requests details of the source of the device driver, this directory should be entered. The device driver is digitally signed and runs with Windows XP, Vista, 7 and 8.

Opening the Excel File CV31.xlsm

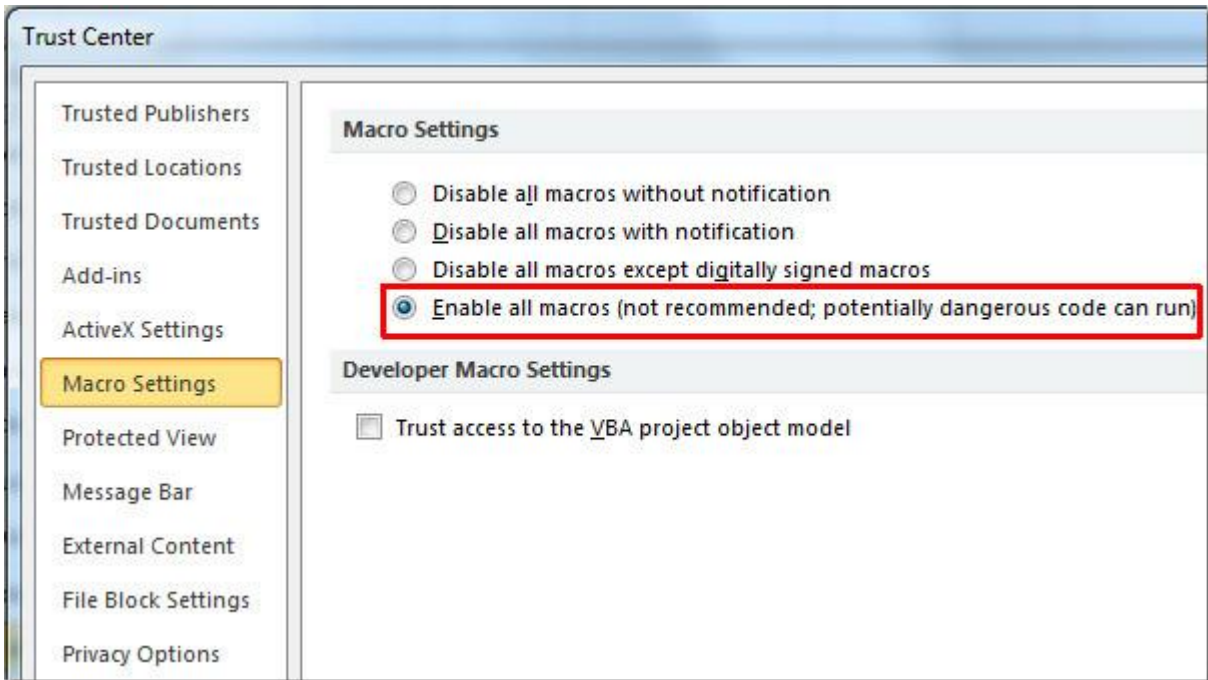
The Excel macro file CV31.xlsm is provided to transfer, display and archive data from the CV:31A. The file is included on the CD/DVD supplied with the instrument or can be downloaded from the Cirrus website at www.cirrusresearch.co.uk/library/software

The file runs with all Excel versions starting from Excel 2007.

It transfers the stored data from the connected CV:31A memory into Excel tables. Vibration exposure A(8) or VDV(8) can be calculated from the human vibration records and measuring reports can be generated. FFT data can also be transferred and displayed graphically.

To work with the file you need to allow macro execution.

Click the Office button, then "Excel options", "Trust center", "Trust center settings" and "Macro settings". Either choose "Disable all macros with notification" or "Enable all macros". With the first option you will be asked for permission each time you open the file. With the second option Excel will not ask you for permission again, but there is a potential risk of unwanted or dangerous macro codes being executed from other sources.



Data import to the Excel worksheet

Open the worksheet "Import". If previous measurement data appears in the table, please save the file under another name and then click "Clear tables" to erase all measurements from the tables.

Connect the CV:31A to a USB port on the PC and switch it on. If not done before, install the device driver. Click "Import measurements from CV:31A". The device with its virtual COM port will be automatically detected.

In rare cases detection may fail, due to other connected USB hardware using virtual COM ports. It may be necessary to disconnect such hardware before data transfer.

The messages in the "Status" field inform you about import progress. Data import may take between a few seconds and some minutes depending on the amount of data.

When the transfer is completed Excel will automatically sort the data into the following worksheet columns: record number, date, time, comment, mode, filter and the measurements of X/Y/Z and A. Columns B and C contain the combined values.

The screenshot shows an Excel spreadsheet titled 'CV:31A Import'. The status bar indicates 'Import finished'. The spreadsheet has columns for 'Sel.', 'No.', 'Date', 'Time', 'Comment', 'Mode', 'Detection', 'Filter (weighting factors)', 'Weighting', 'Measurements' (X, Y, Z, A), and 'Combined measurement' (B, C, Unit). The data is as follows:

Sel.	No.	Date	Time	Comment	Mode	Detection	Filter (weighting factors)	Weighting	X	Y	Z	A	B	C	Unit
<input type="checkbox"/>	00001	07.09.14	10:09:36	STAPLER HALLE SCHMIDT	W/B	IRMS	Wd (1.40) Wd (1.40) Wk (1.00)	health	0.01	0.28	1.25		1.28	1.32	m/s ²
<input type="checkbox"/>	00002	07.09.14	12:19:51	STAPLER HOF SCHMIDT	W/B	IRMS	Wd (1.40) Wd (1.40) Wk (1.00)	health	0.24	0.39	3.18		3.18	4.78	m/s ²
<input type="checkbox"/>	00003	07.09.14	12:30:01	STAPLER HALLE MEIER	W/B	IRMS	Wd (1.00) Wd (1.00) Wk (1.00)	health	0.50	0.93	1.70		1.71	2.01	m/s ²
<input type="checkbox"/>	00004	07.09.14	13:10:11	STAPLER HOF MEIER	W/B	IRMS	Wd (1.00) Wd (1.00) Wk (1.00)	health	0.54	1.06	2.01		2.93	3.96	m/s ²

Figure 38: Excel import

Calculation of Vibration Exposure A(8) and VDV(8)

Vibration exposure A(8), and alternatively, VDV(8), are both used for the risk assessment of human vibration.

They can be calculated based on hand-arm (H/A) and whole-body measurements (W/B). Use the check boxes in the left column of the import worksheet to select the data to be included in the vibration exposure calculation. Alternatively, you may click "Select all". After selecting the data, click the button "Transfer selected data to daily exposure worksheets".

This will transfer the relevant records to the worksheets. These worksheets are available for RMS based hand-arm and whole-body measurements and VDV based whole-body measurements.

A message box will show you how many records have been transferred.

Select and open the worksheet according to the type of calculation you require:

A(8) RMS H-A A(8) Hand-Arm Vibration
 A(8) RMS W-B A(8) Whole-Body Vibration
 Daily VDV W-B Daily Whole-Body Vibration Dose Value

Vibration exposure can be calculated for several persons and activities, i.e. partial exposures.

For this purpose there are two drop down menus for each record. The ten cells "Person" and "Activity" above the table may be overwritten with your own text.

The changes you have made will be shown in the drop down menus the next time you transfer data.

Calculation of Daily Exposure A(8) for Whole-Body Vibrations (based on RMS input)													
1. Hand-Arm vibration values imported from CV:31A in m/s ² (only interval RMS - no VDV):										2. Assign persons and activities:		3. A(8) calculation results:	
No.	IRMS values X/Y/Z			Vector sum	Max. RMS	Comment	Date	Time	Person	Activity	Duration	Person	A(8)
	ax	ay	az	aw(Vec)	MTVV	(As entered in CV:31A)	dd.mm.yy	hh:mm:ss	(select)	(select)	hrs min		
16	0.01	0.28	1.25	1.36	1.32	STAPLER HALLE	SCHW 07.09.14	10:09:36	Person 1	Activity 1	02 00	Person 1	1,01 m/s ² Near exposure limit!
17	0.24	0.39	3.18	3.48	4.33	STAPLER HOF	SCHMID 07.09.14	12:19:51	Person 1	Activity 2	00 30	Person 2	1,62 m/s ² Above exposure limit!!
18	0.50	0.93	1.70	1.71	2.01	STAPLER HALLE	MEIEF 07.09.14	12:30:01	Person 2	Activity 1	02 30		
19	0.54	1.05	2.81	2.93	3.95	STAPLER HOF	MEIER 07.09.14	13:10:11	Person 2	Activity 2	01 45		

Figure 39: Daily exposing calculation in Excel

Click "A(8) calculation" or, in the case of VDV, "Daily exposure calculation" to calculate the vibration exposure (Figure 39).

The result(s) will be compared with the limits stated in the EU directive 2002/44/EC and are displayed in various colours:

black: below exposure action value

purple: between exposure action value and exposure limit

red: above exposure limit

During vibration exposure calculation a report is generated automatically. You can find it in the worksheet "... Report".

It includes tables with the measured values and the partial exposure values for each person and activity. Below you will find the vibration exposure results for each person (Figure 40).

Limit values to EU Directive 2002/44EC:

Exposure action value:	0,5 m/s ²	Exposure limit value:	1,15 m/s ²
------------------------	----------------------	-----------------------	-----------------------

Measuring results

Person	Activity	Comment (from CV:31A)	Date dd.mm.yy	Time hh.mm.ss	Duration		Accelerations			Vect. sum Aw(vec) m/s ²	Max. RMS MTVV 0,0	Partial exposures		
					hrs	min	ax m/s ²	ay m/s ²	az m/s ²			A(8) _x 0,00	A(8) _y m/s ²	A(8) _z m/s ²
Person 1	Activity 1	STAPLER HALLE SC	07.09.14	09:09:36	2	0	0,01	0,28	1,25	1,32	1,26	0,01	0,14	0,63
Person 1	Activity 2	STAPLER HOF SCHN	07.09.14	10:09:51	0	30	0,24	0,39	3,16	3,21	3,18	0,06	0,10	0,79
Person 2	Activity 1	STAPLER HALLE ME	07.09.14	10:15:01	2	30	0,50	0,93	1,70	2,11	1,92	0,28	0,52	0,95
Person 2	Activity 2	STAPLER HOF MEIE	07.09.14	10:30:11	1	45	0,54	1,06	2,81	3,54	2,86	0,25	0,50	1,31

Daily Vibration Exposure A(8)

Person 1	1,01	m/s ²	Near exposure limit!
Person 2	1,62	m/s ²	Above exposure limit!!

Figure 40: Example report (part)

Data Logger Import

The detailed logging information stored on the CV:31A can also be transferred to the Excel macro file. Switch to the worksheet "Logger".

If previous data appears in the table, please save the file under another name and click "Clear Tables" to clear the table. Then click "Import Log File Headers".

Details of each file containing the detailed logging information will be downloaded and will appear in the table.

To open a log, click the tick box titled "Open". In the example in Figure 41 the log file for measurement 30 can be seen.

Clicking the "Open no. 30" tick box will load the detailed information from the instrument and display it as shown in Figure 42.

The sampled data is shown alongside a graph of the logged data.

Log File No.	Date	Time	Detection	Mode	Filter	Open
00	01.01.16	23:02:18	RMS	Hand-Arm	X: Wh Y: Wh Z: Wh	<input type="checkbox"/> Open no. 00

Figure 42: Log File Header Import

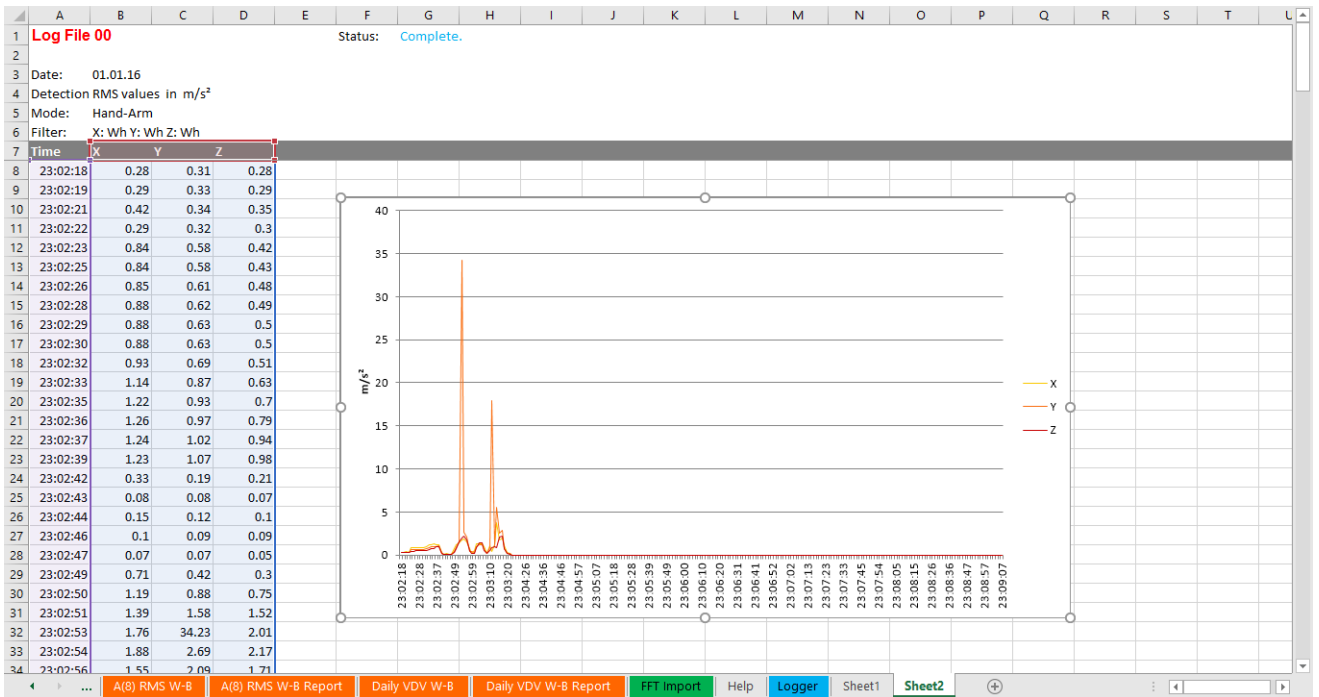


Figure 43: Log file details

FFT Import

The FFT data stored on the CV:31A can also be transferred to the Excel macro file. Switch to the worksheet "FFT Import".

If previous FFT data appears in the table, please save the file under another name and click "Clear FFTs" to clear the table. Then click "Import FFTs from CV:31A".

The frequency steps along with the respective amplitudes of X/Y/Z are sorted into table rows. You will see the date, time and comment for each record.

Tick the check boxes on the left hand side of each record to select which FFTs should be displayed in the three diagrams above the the table (Figure 41).

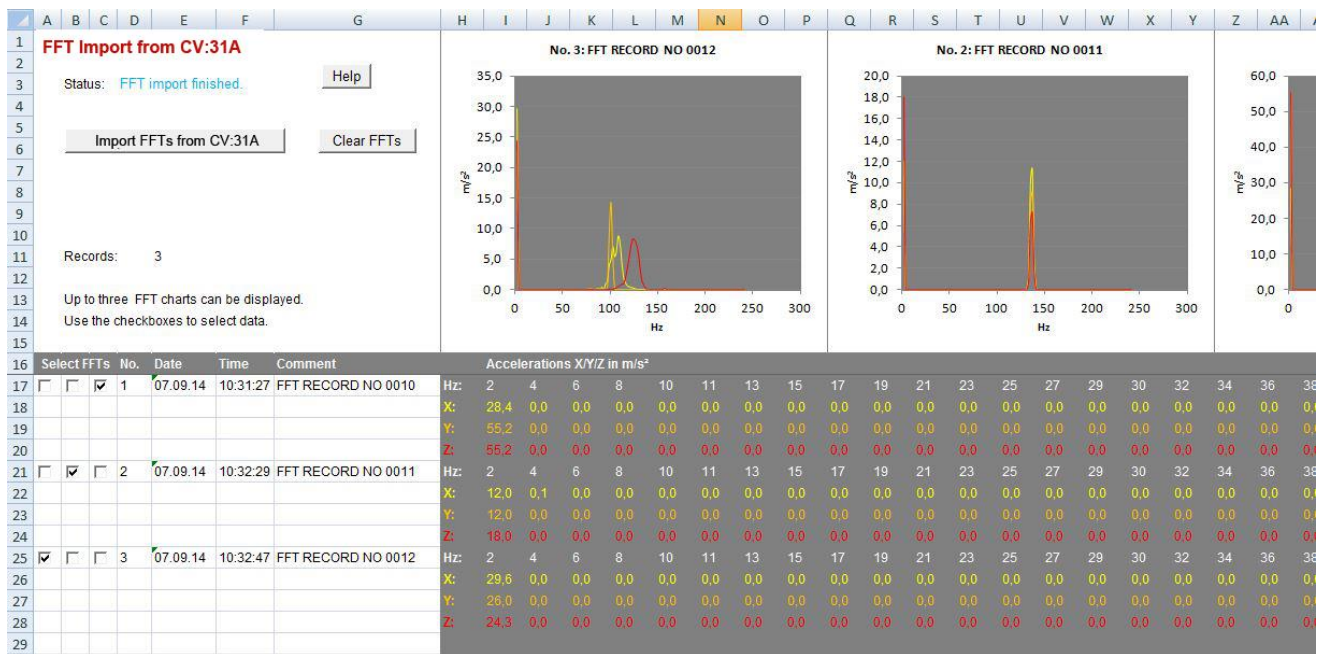


Figure 43: FFT Import to Excel

Appendix 1 Fundamentals of Human Vibration Measurement

Introduction

The main purpose of measuring human vibration is the prevention of health risks and the evaluation of comfort, for example in vehicles.

Two categories are distinguished:

- **Hand-Arm Vibration**, which is induced via the hands into the body. It may cause, for example, circulatory disorder, bone, joint or muscle diseases.
- **Whole-Body Vibrations**, acting via the buttocks, the back and the feet of a sitting person, the feet of a standing person or the back and the head of a recumbent person. Such vibrations may cause backache or damage to the spinal column.

Both types of human vibration measurement are described in international standards:

- **ISO 5349** - Measurement and evaluation of human exposure to hand-transmitted vibration
- **ISO 2631** - Evaluation of human exposure to whole-body vibration (also ASA/ANSI S3.18)
- **ISO 8041** - Human response to vibration. Measuring Instrumentation
- **ISO 8662** - Hand-held portable power tools - Measurement of vibrations at the handle
- **ISO 6954** - Guidelines for the measurement, reporting and evaluation of vibration with regard to habitability on passenger and merchant ships
- **ISO 10056** - Measurement and analysis of whole-body vibration to which passengers and crew are exposed in railway vehicles
- **ISO 10326** - Laboratory method for evaluating vehicle seat vibration
- **ISO 28927** - Hand-held portable power tools - Test methods for evaluation of vibration emission

The subject of human vibration has gained particular importance in Europe since the directive **2002/44/EC** came into effect. It specifies the duties of employers with regard to workers protection.

EU Occupational Health Directive 2002/44/EC

The following text is an abstract of Directive 2002/44/EC of the European Parliament and of the Council dated June 25, 2002.

The complete text can be downloaded from <http://eur-lex.europa.eu/>

The directive specifies minimum requirements for the protection of workers from the risks arising from vibrations.

Manufacturers of machines and employers should make adjustments regarding risks related to exposure to vibration.

Exposure Limit Values

The directive lays down the following limit values:

	<i>Hand-Arm, RMS</i>	<i>Whole-Body, RMS</i>	<i>Whole-Body, VDV</i>
Exposure action value	2.5 m/s ²	0.5 m/s ²	9.1 m/s ^{1,75}
Exposure limit	5 m/s ²	1.15 m/s ²	21 m/s ^{1,75}

Table 1: Limits to EU directive 2002/44/EC

Once the **exposure action value** is exceeded, the employer shall establish and implement a program of technical and organizational measures intended to reduce to a minimum exposure to mechanical vibration, taking into account in particular:

- Other working methods that require less exposure to mechanical vibration
- Appropriate work equipment of ergonomic design, producing the least possible vibration
- Provision of auxiliary equipment that reduces the risk of injuries, such as protective gloves or special seats
- Appropriate maintenance programs for work equipment
- Design and layout of workplaces
- Adequate information and training to instruct workers to use work equipment correctly and safely
- Limitation of the duration and intensity of the exposure
- Work schedules with adequate rest periods
- Provision of clothing to protect workers from cold and damp

In any event, workers shall not be exposed above the **exposure limit value**. If this should be the case, the employer shall take immediate action to reduce exposure below the exposure limit value.

The methods used may include sampling, which must be representative of the personal exposure of a worker to the mechanical vibration in question.

The assessment of the level of exposure to vibration is based on the calculation of **daily exposure A(8)** expressed as equivalent continuous acceleration over an eight-hour work period. For the determination of A(8) it is not necessary to measure over eight hours.

It is sufficient to make short-term measurements during representative work steps. The results are normalized to eight hours. Daily exposure is calculated as follows:

$$A(8) = a_{we} \sqrt{\frac{T_e}{T_0}}$$

Equation 1

Where:

A(8) is the daily vibration exposure

- a_{we} is the energy equivalent mean value of the frequency weighted acceleration during exposure, which means
- For Hand-Arm Vibration the X/Y/Z vector sum of Wh frequency-weighted RMS values (2)

$$a_w = \sqrt{a_{wx}^2 + a_{wy}^2 + a_{wz}^2}$$

Equation 2

- For Whole-Body Vibration the highest of the three RMS values a_{wx} , a_{wy} and a_{wz} with the following frequency and magnitude weightings:
- X and Y with weighting filter W_d and weighting factor 1.4
 - Z with weighting filter W_k and weighting factor 1.0

T_e is the total duration of exposure during one work day

T_0 is the reference duration of 8 hours

Daily exposure may consist of several partial exposures with different vibration magnitudes.

This can be the case if there are longer interruptions in the work process, if the work equipment or its way of use is changed. A partial exposure section should have a roughly constant magnitude and less than 10 % interruptions.

Resulting daily exposure is calculated as follows:

Hand-Arm Vibration

$$A(8) = \sqrt{\frac{1}{T} \sum_{i=1}^n a_{wi}^2 T_{ei}}$$

Equation 3

Where:

$A(8)$ is the daily exposure

a_{wi} is the energy equivalent mean value of the Wh frequency weighted acceleration of partial exposure section i

n is the number of partial exposure sections

T_{ei} is the duration of exposure i

T_0 is the reference duration of 8 hours

Whole-Body Vibration

Separate daily exposures need to be calculated for X/Y/Z. The highest value is used for the evaluation, i.e. compared with the limits of Table 1.

$$A_x (8) = \sqrt{\frac{1}{T} \sum_{i=1}^n a_{wxi}^2 T_{ei}}$$

Equation 4

$$A_y (8) = \sqrt{\frac{1}{T} \sum_{i=1}^n a_{wyi}^2 T_{ei}}$$

Equation 5

$$A_z (8) = \sqrt{\frac{1}{T} \sum_{i=1}^n a_{wzi}^2 T_{ei}}$$

Equation 6

where

$A_{x/y/z}(8)$ are the daily exposures of directions X/Y/Z

$a_{wx/y/zi}$ are the energy equivalent mean values of the frequency weighted accelerations in the directions X/Y/Z during partial exposure section i with the following frequency and magnitude weightings:

- X and Y with weighting filter W_d and weighting factor 1.4
- Z with weighting filter W_k and weighting factor 1.0

n is the number of partial exposure sections

T_{ei} is the duration of exposure i

T_0 is the reference duration of 8 hours

The calculations shown above are based on RMS values.

An alternative method uses fourth-power mean values called **Vibration Dose Value (VDV)** with the measuring unit $m/s^{1.75}$.

Table 1 also includes VDV based limit values.

VDV based daily exposure $VDV(8)$ is calculated:

$$VDV (8) = VDV \cdot \sqrt[4]{\frac{T_{exp}}{T_{meas}}}$$

Equation 7

where

VDV(8) is the daily exposure value

VDV is the frequency-weighted vibration dose value

T_{exp} is the duration of exposure

T_{meas} is the duration of VDV measurement

Daily exposure may consist again of several partial exposure sections. Separate daily exposure values are to be calculated for X/Y/Z.

The highest one is compared with the limits of Table 1 for evaluation.

$$VDV_x(8) = \sqrt[4]{\sum_{i=1}^n VDV_{xi}^4 \cdot \frac{T_{iexp}}{T_{imeas}}}$$

Equation 8

$$VDV_y(8) = \sqrt[4]{\sum_{i=1}^n VDV_{yi}^4 \cdot \frac{T_{iexp}}{T_{imeas}}}$$

Equation 9

$$VDV_z(8) = \sqrt[4]{\sum_{i=1}^n VDV_{zi}^4 \cdot \frac{T_{iexp}}{T_{imeas}}}$$

Equation 10

where

$VDV_{x/y/z}(8)$ are the daily exposures of directions X/Y/Z

$VDV_{x/y/zi}$ are the frequency-weighted vibration dose values of directions X/Y/Z during exposure section i

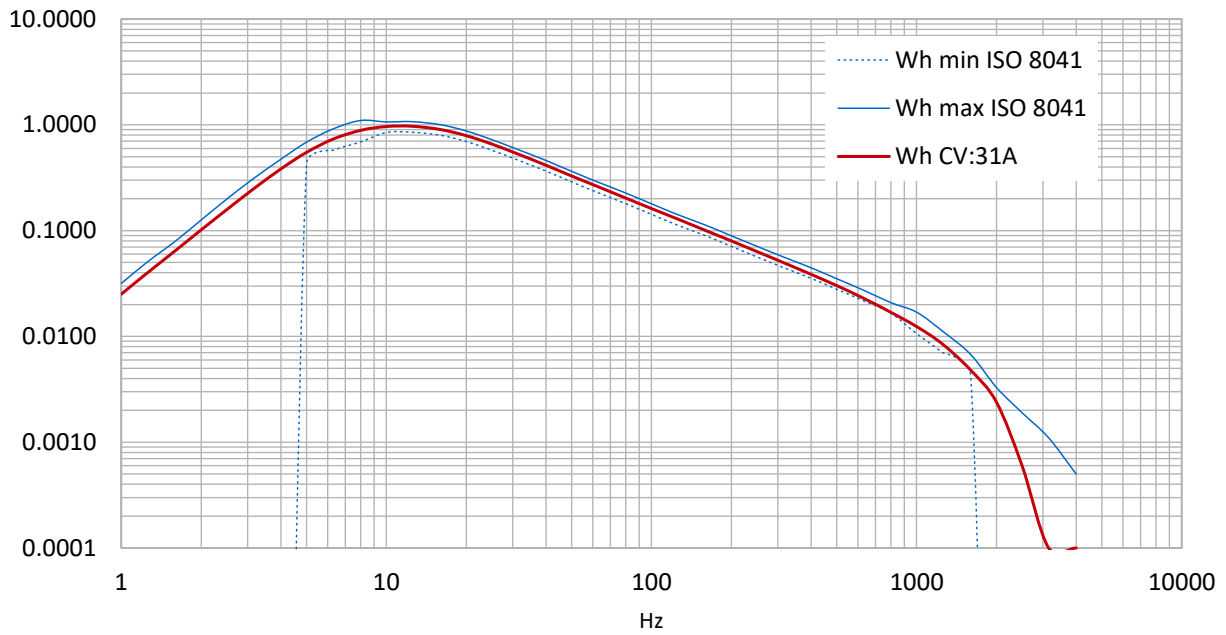
T_{iexp} is the duration of exposure section i

T_{meas} is the duration of VDV measurement during exposure section i

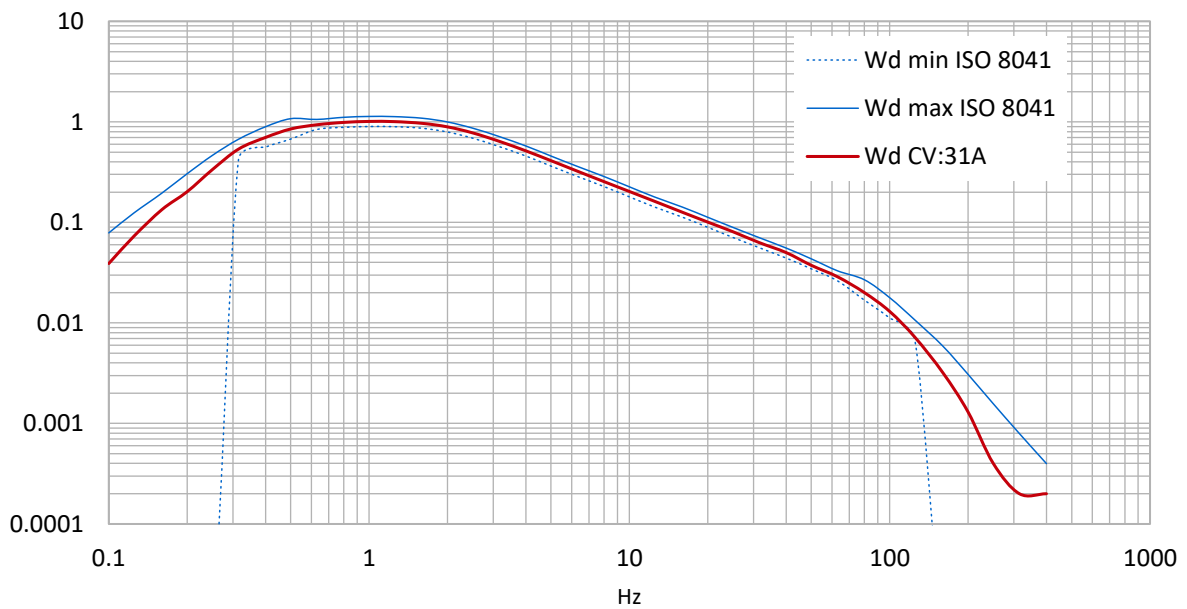
The CV:31A measures Hand-Arm and Whole-Body vibration, the latter as RMS or VDV values.

Appendix 2 Weighting Filters

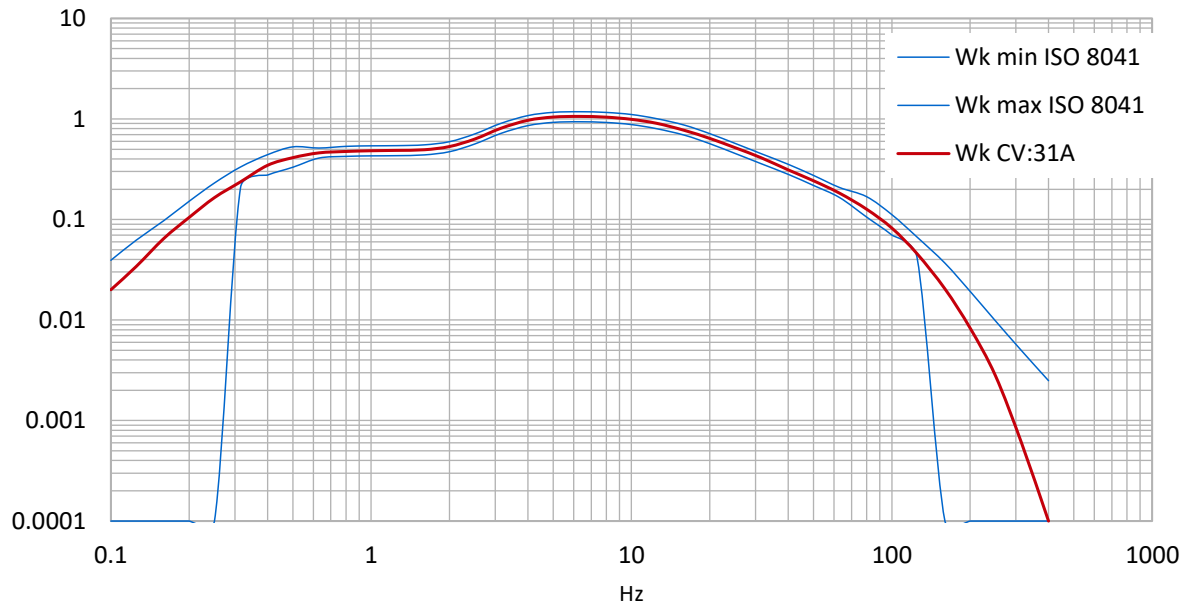
Hand-arm weighting filter W_h



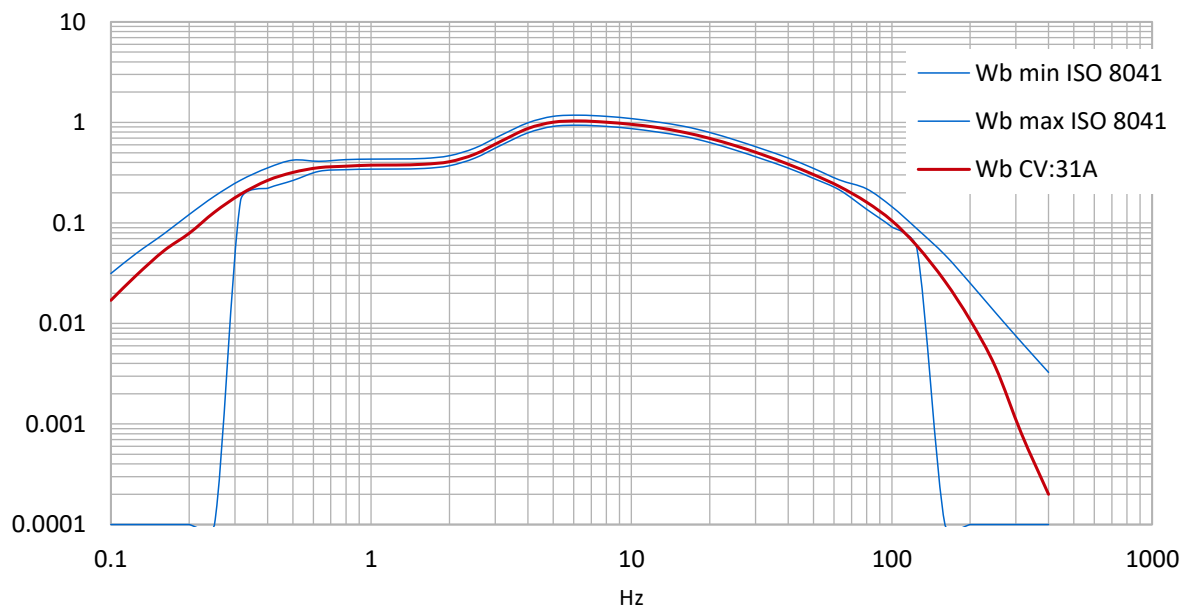
Whole-body weighting filter W_d



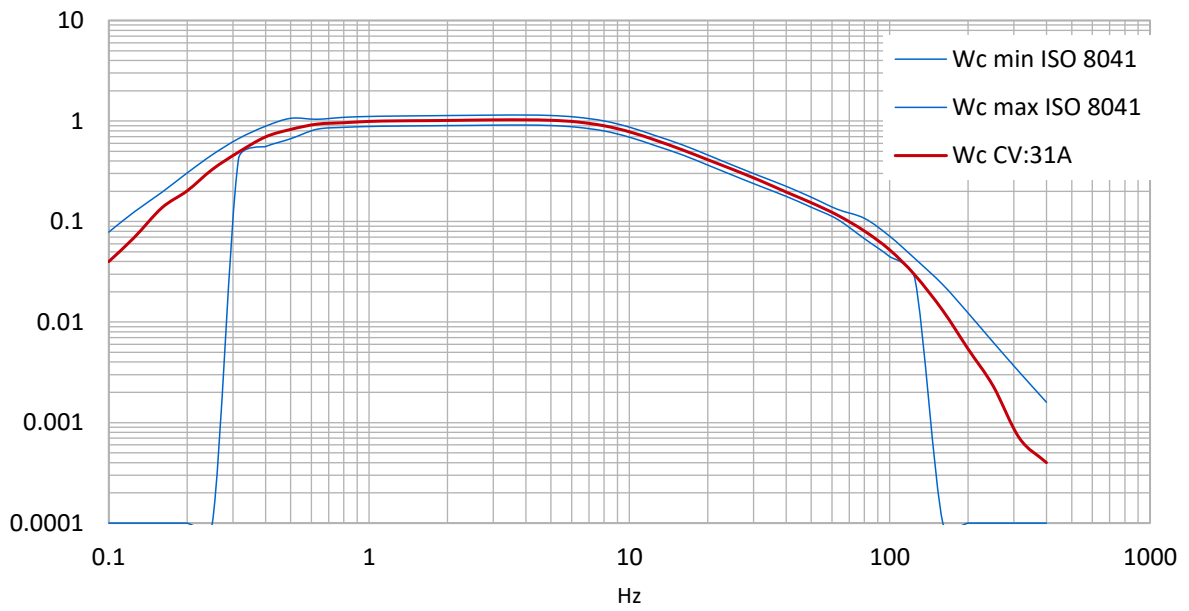
Whole-body weighting filter W_k



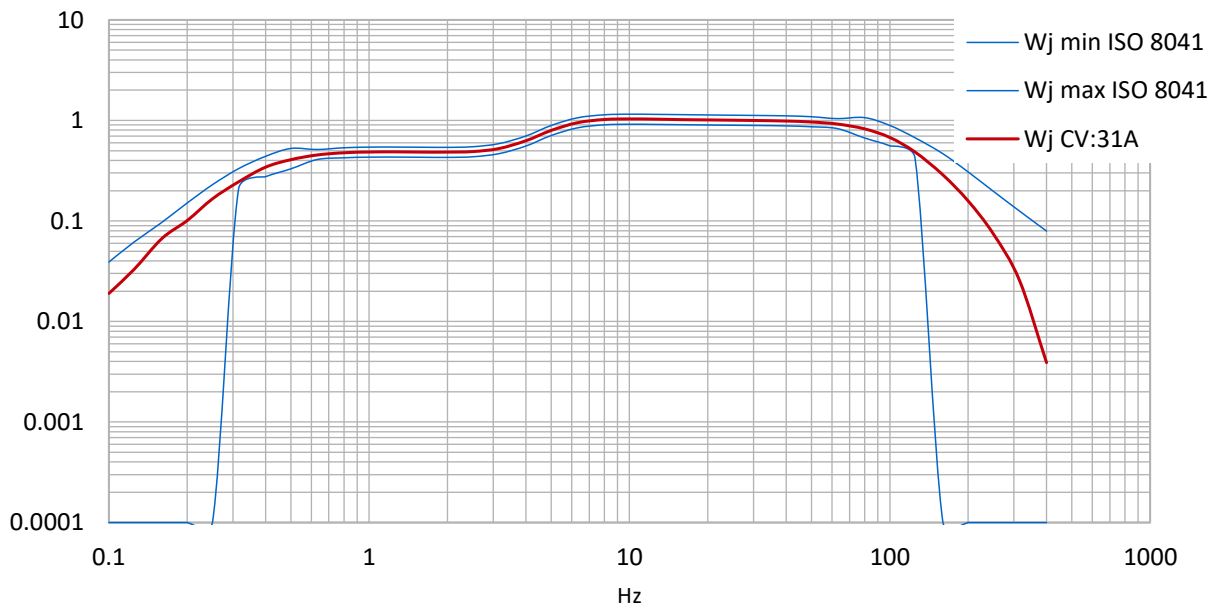
Whole-body weighting filter W_b for passenger trains

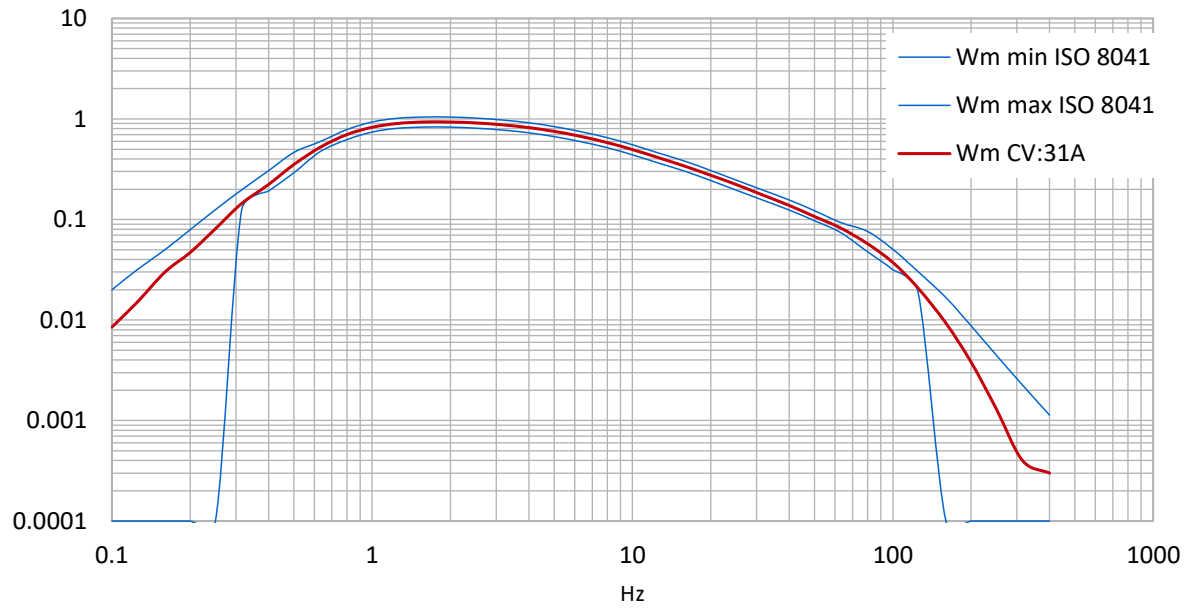


Whole-body weighting filter W_c for the backrest of seats



Whole-body weighting filter W_j for the head of recumbent persons



Whole-body weighting filter W_m for persons in buildings

Appendix 3 Specifications

Inputs	4 Low-power IEPE inputs, 1 mA / 17 V, transducer sensitivity range 0.8 to 120 mV/ms ⁻² TEDS support for template 25 to IEEE 1451.4	
Display functions	Interval RMS Vector sum Maximum running RMS (MTVV) Vibration dose value (VDV)	
Human vibration	Running RMS Maximum running RMS Vector sum Peak value Maximum peak value	
General vibration (acceleration / velocity / displacement)	Sensor with 1 mV/ms ⁻² 1100 m/s ² 100 - 10 000 mm/s (1 kHz / 1 Hz) 250 - 15 000 μm (5 Hz / 250 Hz)	
Measuring ranges	Sensor with 10 mV/ms ⁻²	Sensor with 100 mV/ms ⁻²
Acceleration	110 m/s ²	110 m/s ²
Velocity	10 - 1000 mm/s (1 kHz / 1 Hz)	10 - 1000 mm/s (1 kHz / 1 Hz)
Displacement (zero-to-peak values)	25 - 1500 μm (5 Hz / 250 Hz)	25 - 1500 μm (5 Hz / 250 Hz)
Display resolution	Sensor with 1 / 10 mV/ms ⁻²	Sensor with 100 mV/ms ⁻²
Acceleration	0.01 m/s ²	0.001 m/s ²
Velocity	0.1 mm/s	0.001 mm/s
Displacement	1 μm	0.1 μm
Linearity range	> 75 dB (for < ± 6 % error)	
Noise	< 0,003 m/s ²	
Filters	Weighting filters Wb, Wc, Wd, Wh, Wj, Wk, Wm	
Human vibration	Unweighted: 6.3 - 1259 Hz (hand-arm); 0.4 - 100 Hz (whole-body)	
Acceleration	0.1 Hz – 2 kHz; 1 Hz – 1 kHz	
Velocity	1 Hz – 100 Hz; 2 Hz – 1 kHz; 10 Hz – 1 kHz	
Displacement	5 Hz: – 250 Hz	
Frequency analysis	125 line FFT for X/Y/Z; Peak spectrum of acceleration Frequency ranges: 3 - 240, 6 - 480, 12 - 960, 24 - 1920 Hz Refresh rate: 0,5/s; Windowing: Hann	
Data memory	Flash; 10 000 measurements; 1000 FFTs, 100 log files of up to 32,000 records each	
Display	OLED, coloured, 128×160 pixels	
USB interface	USB 2.0, full-speed, CDC mode, via cable VM2x-USB	
Batteries	3 cells size AAA or Alkaline (LR03) or rechargeable NiMH (HR03)	
Battery oper. time	10 - 14 hours	
Operating temperature	- 20°C – 60 °C	
Dimensions	125 mm x 65 mm x 27 mm (without connectors)	
Weight	140 g (with batteries, without sensor)	

Appendix 4 CE Declaration of Conformity**Cirrus Research plc Hunmanby UK
CE Certificate of Conformity**

Manufacturer: Cirrus Research plc
Acoustic House, Bridlington Road
Hunmanby, North Yorkshire, YO14 0PH
United Kingdom
Telephone +44 1723 891655

Equipment Description

The following equipment manufactured after 1st March 2015:

CV:31A Vibration Meter

meet the following standards

EN 61010-1: 2002 (Safety requirements)

EN 61326-1: 2006 (EMC requirements)

Signed

Dated 1st March 2015

A handwritten signature in black ink, appearing to be 'S. O'Rourke', written in a cursive style.

S. O'Rourke
Director

Warranty Information.

1. The warranty covers any vibration instrument supplied by Cirrus Research plc after May 1st 2015.
2. The warranty covers all faults on, and minor accidental damage to, the instrument except the accelerometer and cable for the period defined in para (4) below.
3. Minor accidental damage does not include blatant miss-use, damage caused by the use of any accessories or components not specified or recommended by Cirrus, damage caused through non-Cirrus modification, continued use outside of Cirrus' recommended procedure or conditions or use contrary to the any advice provided by Cirrus.
4. The initial period of the warranty is 2 (two) years or 104 weeks from the date of purchase as a new instrument from Cirrus Research plc or their formally approved distributors OR 130 weeks from the date the instrument passed its final manufacturing inspection at Cirrus Research plc - whichever is the shorter.
5. A shorter 1 (one) year or 52 week warranty is offered for used, ex-demo or ex-rental equipment unless a special arrangement is made and a written confirmation of the special warranty is given by Cirrus Research plc.
6. There will be a charge for "Traceable Calibration" and the price is published in the Calibration Price List. The customer is responsible for all shipping, duty and other charges relating to the annual "Traceable Calibration".
7. Where a repair service is conducted under warranty, Cirrus Research plc will cover the shipping, duty and other costs relating to the repair of the instrument.
8. Cirrus Research endeavours to ensure stocks of instrument components for a period of 10 years from the date of manufacture but does not guarantee to do so as certain components do become obsolete or discontinued.
9. If a sub-component becomes obsolete and stocks are depleted then Cirrus Research will endeavour to facilitate a repair but will not offer the same length warranty.
10. In the event of any dispute on the terms of the warranty Cirrus Research plc will accept pendulum arbitration by the United Kingdom Institute of Acoustics Ltd.
11. The warranty does not in any way reduce any legal right of the buyer or user of the equipment; it is in addition to all legal rights determined by the European Union.
12. Cirrus Research plc reserves the right to amend or update these terms and conditions without prior notice.

Cirrus Research Offices

The addresses given below are the Cirrus Research plc offices. Cirrus Research plc also have approved distributors and agents in many countries worldwide. For details of your local representative, please contact Cirrus Research plc at the address below. Contact details for Cirrus Research authorised distributors and agents are also available from the Internet Web site at the address shown below.

Main Office

Cirrus Research plc
Acoustic House
Bridlington Road
Hunmanby
North Yorkshire
United Kingdom
YO14 0PH

Telephone: +44 (0)1723 891655
Fax: +44 (0)1723 891742
E-mail: sales@cirrusresearch.co.uk
Web Site: www.cirrusresearch.co.uk

Germany

Cirrus Research plc Deutschland
Arabella Center
Lyoner Strasse 44 – 48
D-60528 Frankfurt
Germany

Tel: +49 (0)69 95932047
Fax +49 (0)69 95932049

Email: vertrieb@cirrusresearch.de
Web: www.cirrusresearch.de

Spain

CIRRUS RESEARCH S.L.
Travessera de Gracia, 62 4º 7ª
08006 Barcelona
SPAIN

Tel: (34) 933 622 891
Email: info@cirrusresearch.es
Web: www.cirrusresearch.es
