

CWJ1 - Assembly Instructions

Step 1: Remove contents from the boxes and compare with Parts Checklist (Included)

Step 2: Locate the cart frame and the cart handle



Cart frame



Cart handle

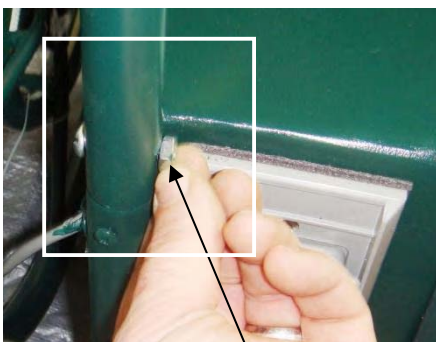
Step 3: Remove the bolts from the cart handle and attach the handle to the cart frame.



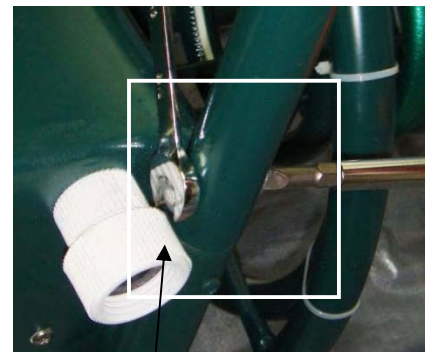
Removing bolts at the end of the cart handle



Placing cart handle on cart frame



Nuts toward the rear of the cart

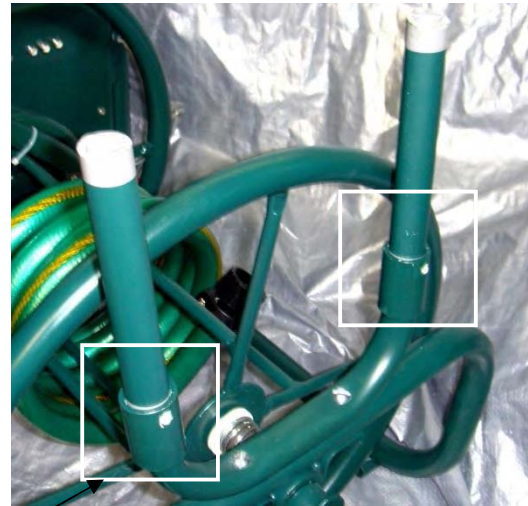


Tighten securely

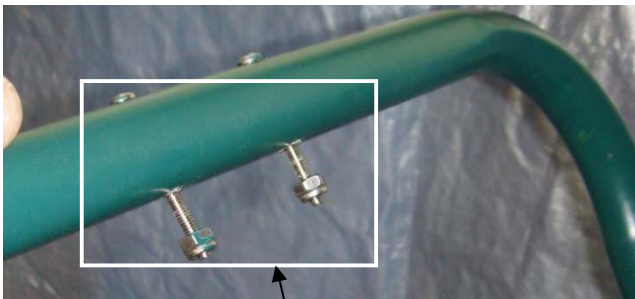
Step 4: Attach the solar panel frame



Remove the water-tight cover on the solar panel frame.



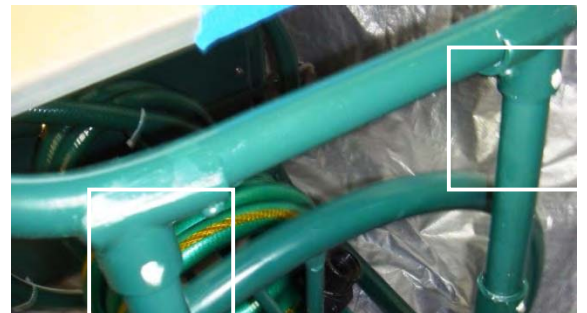
Insert the supports for the solar panel frame onto the cart.
(Insert as far as possible)

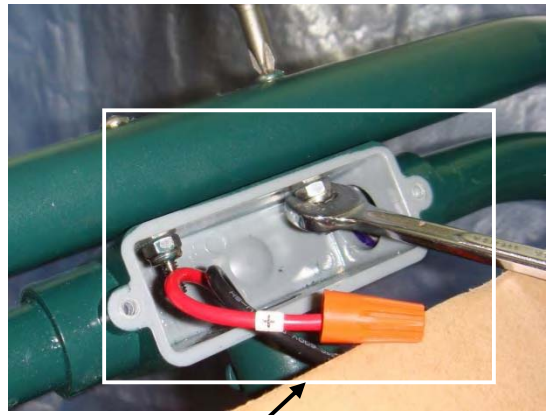


Remove the lock nuts from the bolts on the top of
the cart handle.
(Leave the screws)

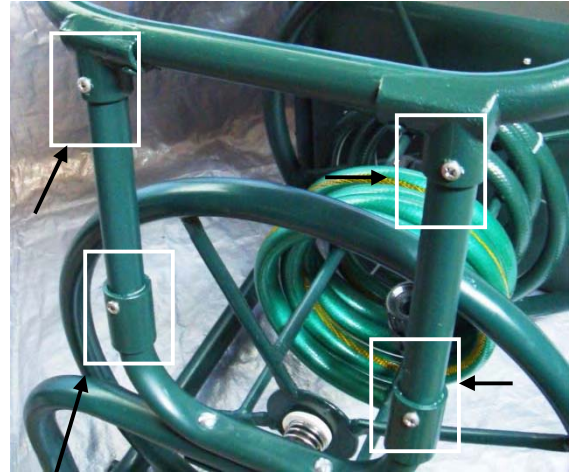


Press solar panel frame onto frame supports.





Lift the water-tight box onto the cart frame, inserting screws through the pre-drilled holes. Screw and tighten the lock nuts.



Using the 4 self-drilling / self-tapping screws, attach the solar panel frame to the supports in 4 places as shown. *(Note: If you can't line up the pre-drilled holes, turn the tube and make new holes with screwdriver and the self-drilling screws)*

(Ensure cardboard cover is on the panel to keep it from producing any voltage during this next step.)

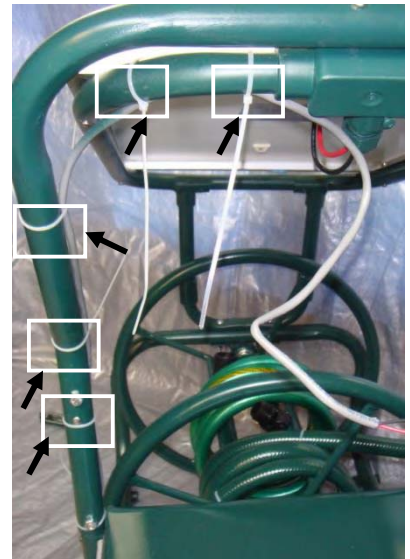
Step 5: Attach the wiring to the solar panel

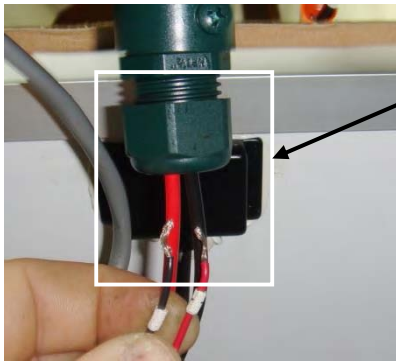


Locate the wiring bundle near the switch and using the provided wire ties attach the wire to the cart frame handle
Note: Try to run the wires to the inside where they will not be damaged during normal cart operation.

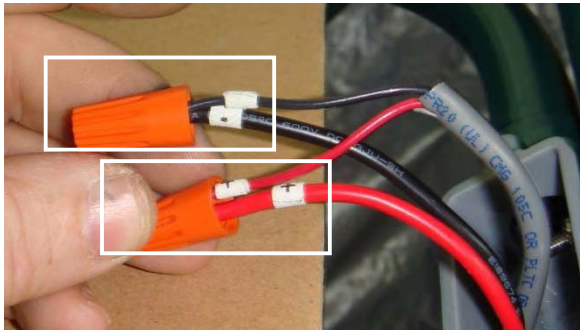
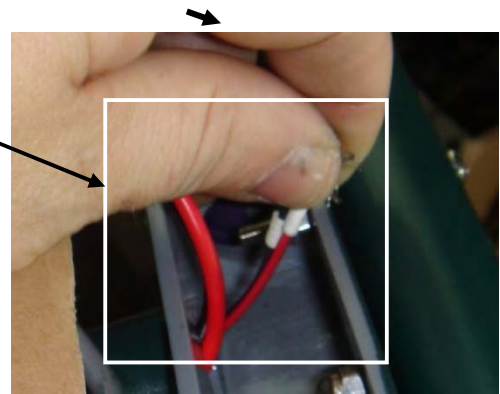


To use wire ties:
Insert end through slot as shown





Loosen the cord grip and insert the wires.



Using the provided wire nuts attach (+Red to +Red) and (-Black to -Black)



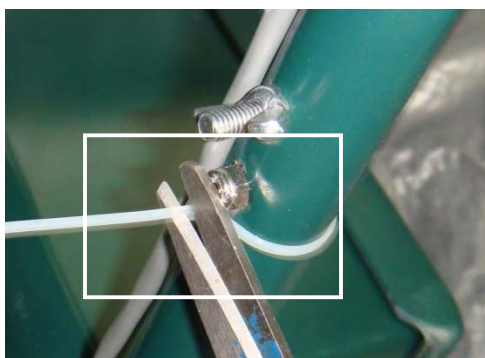
Tuck the wires in securely.



Replace the water tight cover



Tighten the cord grip



Remove excess wire tie

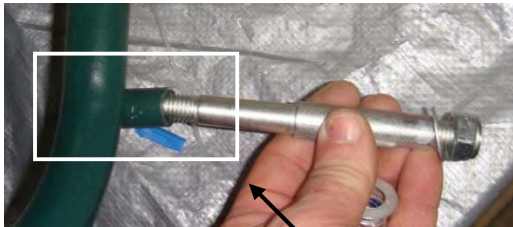
Now it is safe to remove the cardboard covering on the Solar Panel.

Step 6: Attach handle for the hose reel



Insert handle and tighten nut

Step 7: Attach wheels

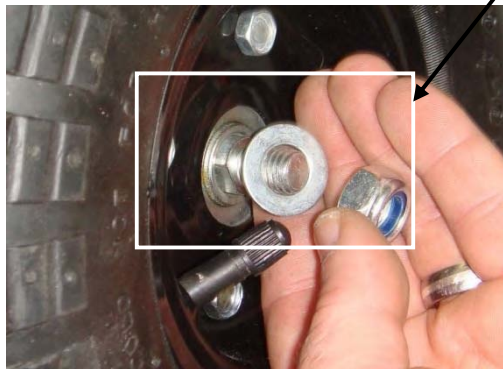
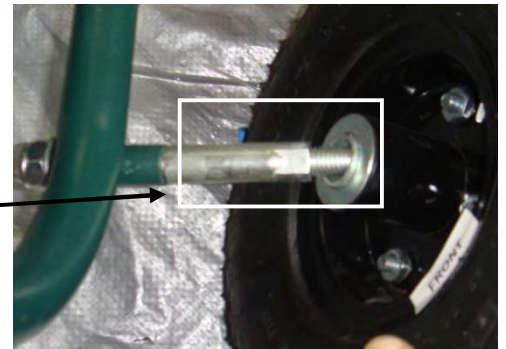


Insert wheel axle into the cart frame and tighten nut
Do this for all 4 axles

Ensure front tires go to the front of the cart (The end with the hose reel handle) and the rear wheels go to the rear. *(Note: The front tires are filled with water to offset the weight of the battery)*



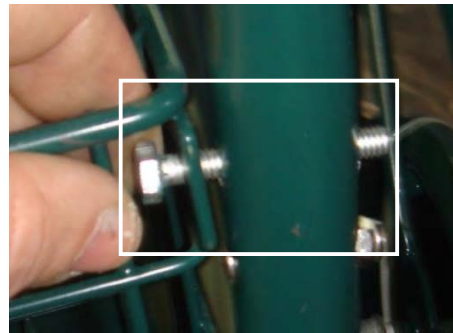
Attach the wheels and secure with the locking nuts provided



Step 8: Attach the wire basket



Remove the bolts with the wing-nuts from the cart frame handle



Insert through the basket and attach wing-nuts

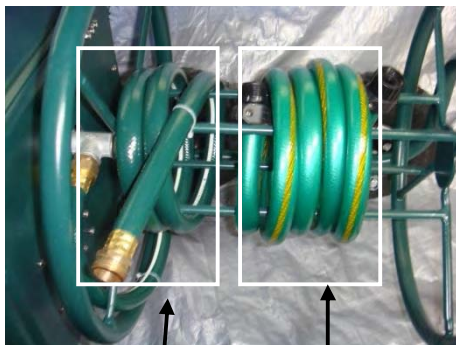


Once both bolts are in, tighten the wing-nuts

Step 9: Attach the hoses

Each CWJ1 comes with two 6-foot hoses. One is pre-attached as the leader for water exiting the pump. Attach your own garden hose to the end of the attached hose and roll the hose onto the reel of the cart. The cart holds up to 205 feet of hose.

The second 6-foot section of hose is used as the feeder from the rain barrel to the cart pump. It is suggested not to use a garden hose over 10 feet in length for this because the pump suction can collapse the hose forming a vacuum and possibly damage the pump.



Leader hose for attachment of up to 250 feet.

Feeder hose for supply from rain barrel



Attach feeder hose here.