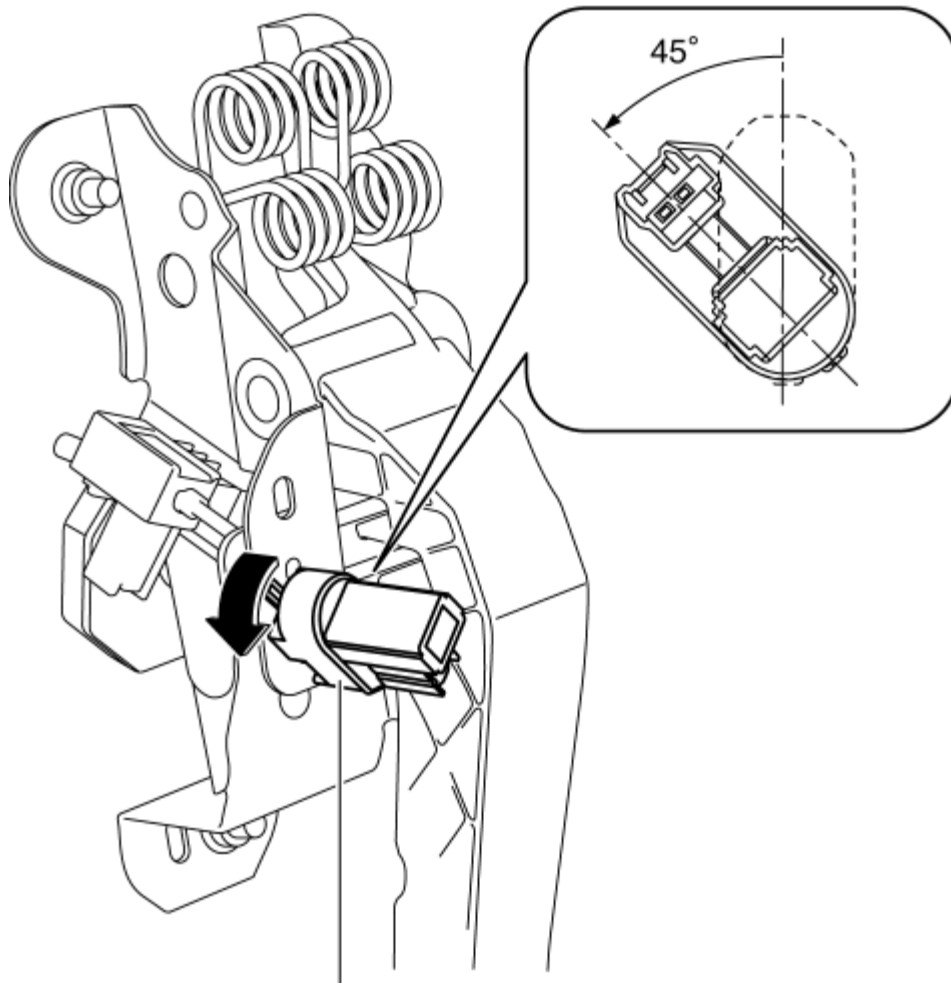


[< Previous](#) [Next >](#)

## 2013 - CX-5 - Transmission/Transaxle

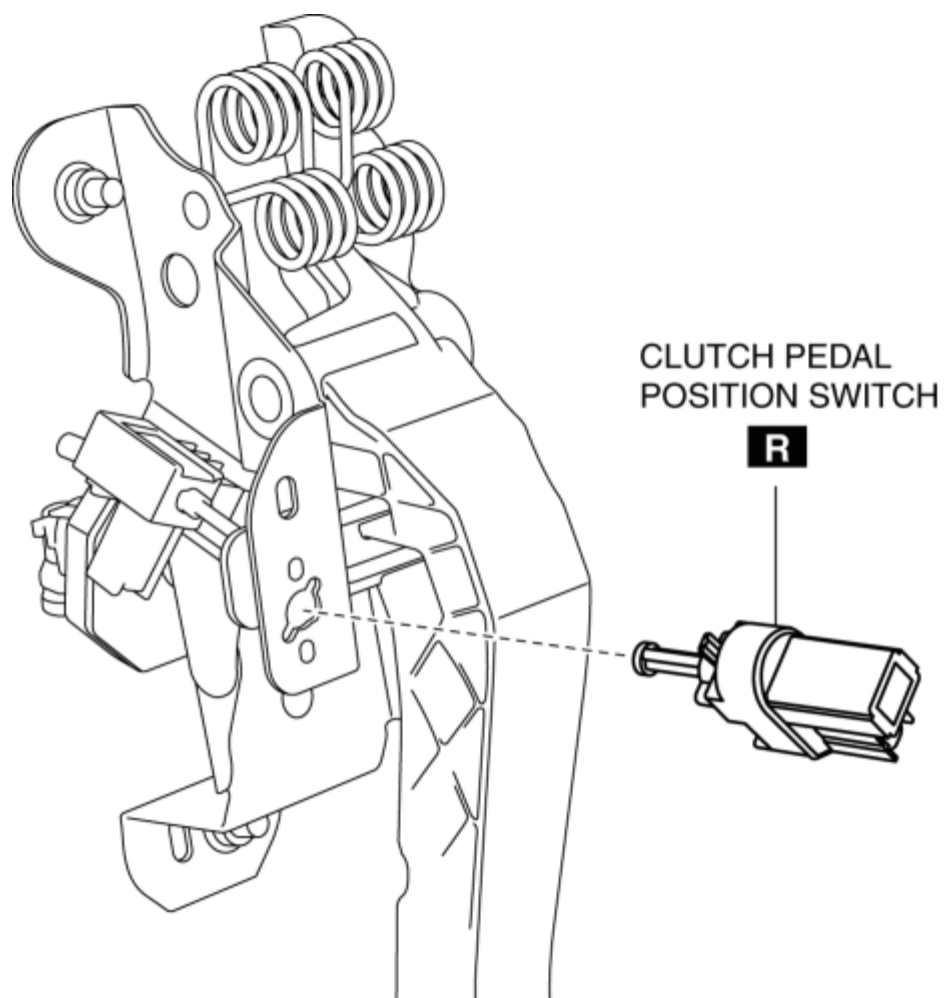
### CLUTCH PEDAL POSITION SWITCH REMOVAL/INSTALLATION [C66M-R]

1. Disconnect the negative battery cable. (See **NEGATIVE BATTERY CABLE DISCONNECTION/CONNECTION [SKYACTIV-G 2.0].**)
2. Disconnect the clutch pedal position switch connector.
3. Rotate the clutch pedal position switch 45° counterclockwise.

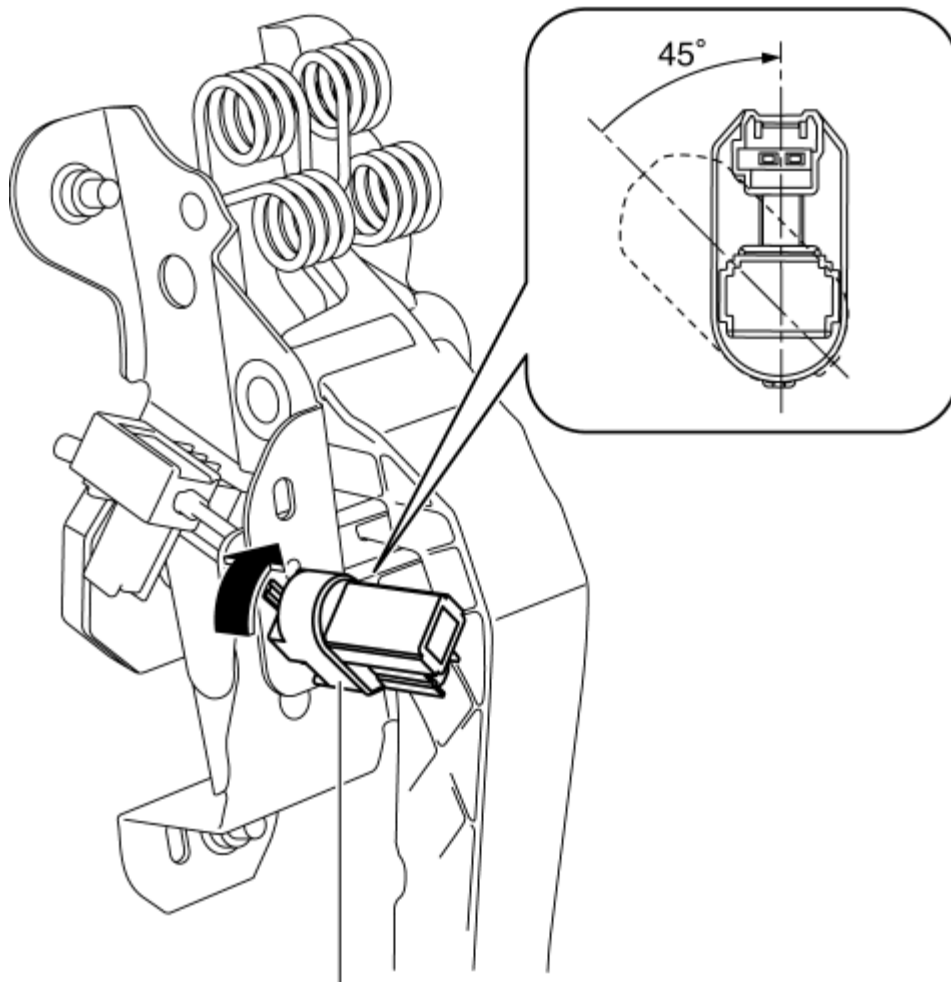


CLUTCH PEDAL POSITION SWITCH **R**

4. Remove the clutch pedal position switch from the clutch pedal.



5. Insert a new clutch pedal position switch into the clutch pedal hole until the switch stops.
6. Rotate the clutch pedal position switch 45° clockwise.



CLUTCH PEDAL POSITION SWITCH **R**

7. Verify that the clutch pedal position switch is locked securely.
8. Install in the reverse order of removal.

[< Previous](#)   [Next >](#)

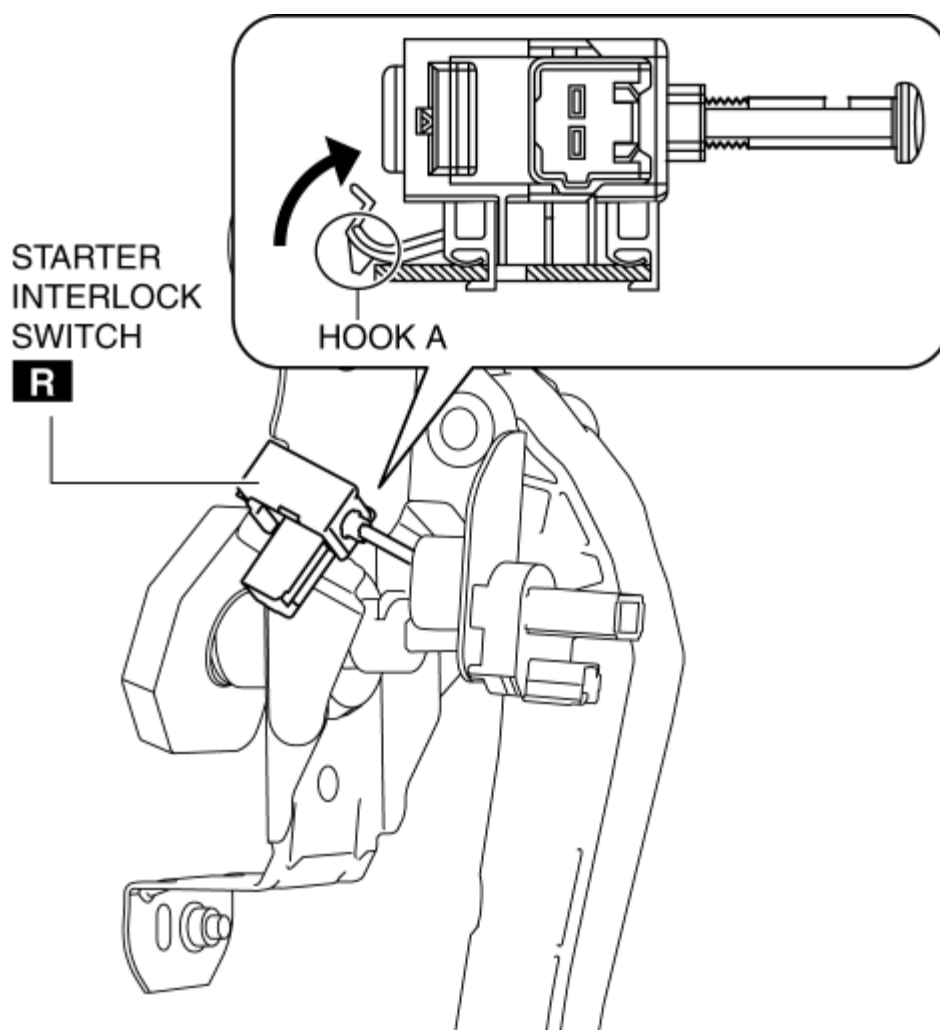
[Back to Top](#)

[< Previous](#) [Next >](#)

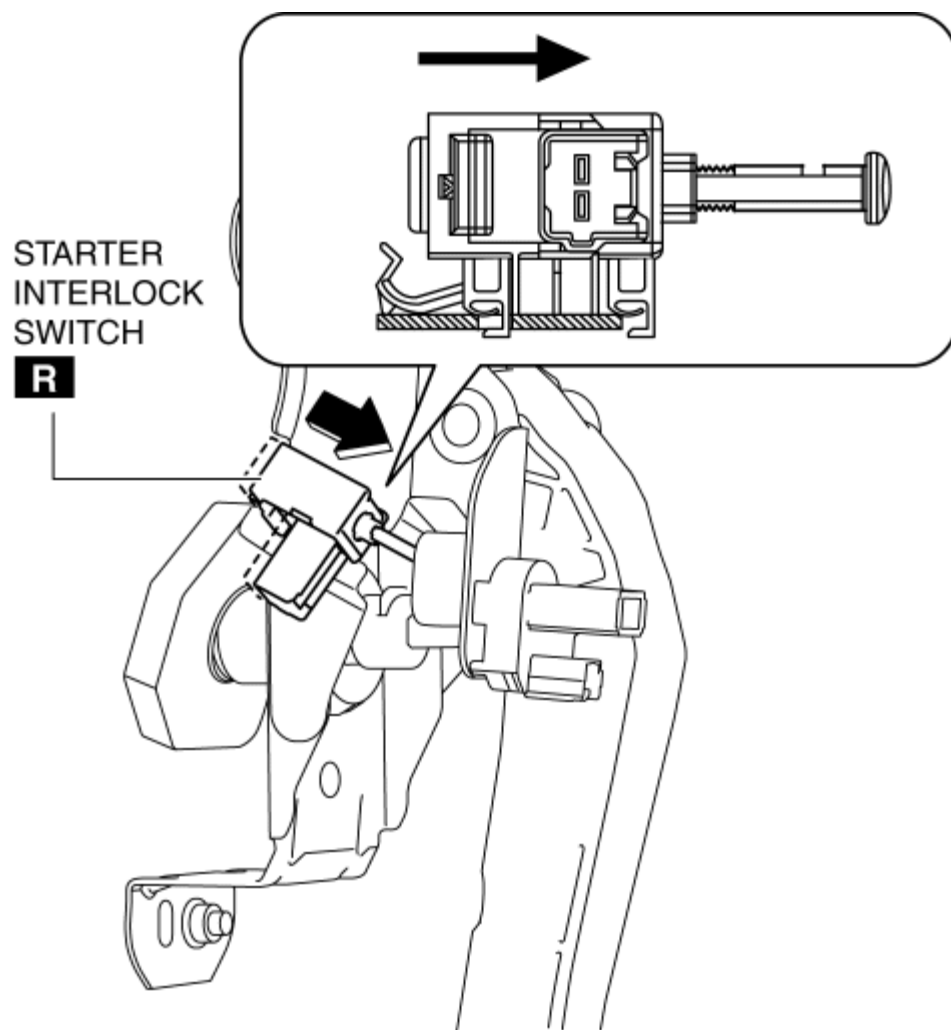
## 2013 - CX-5 - Transmission/Transaxle

### STARTER INTERLOCK SWITCH REMOVAL/INSTALLATION [C66M-R]

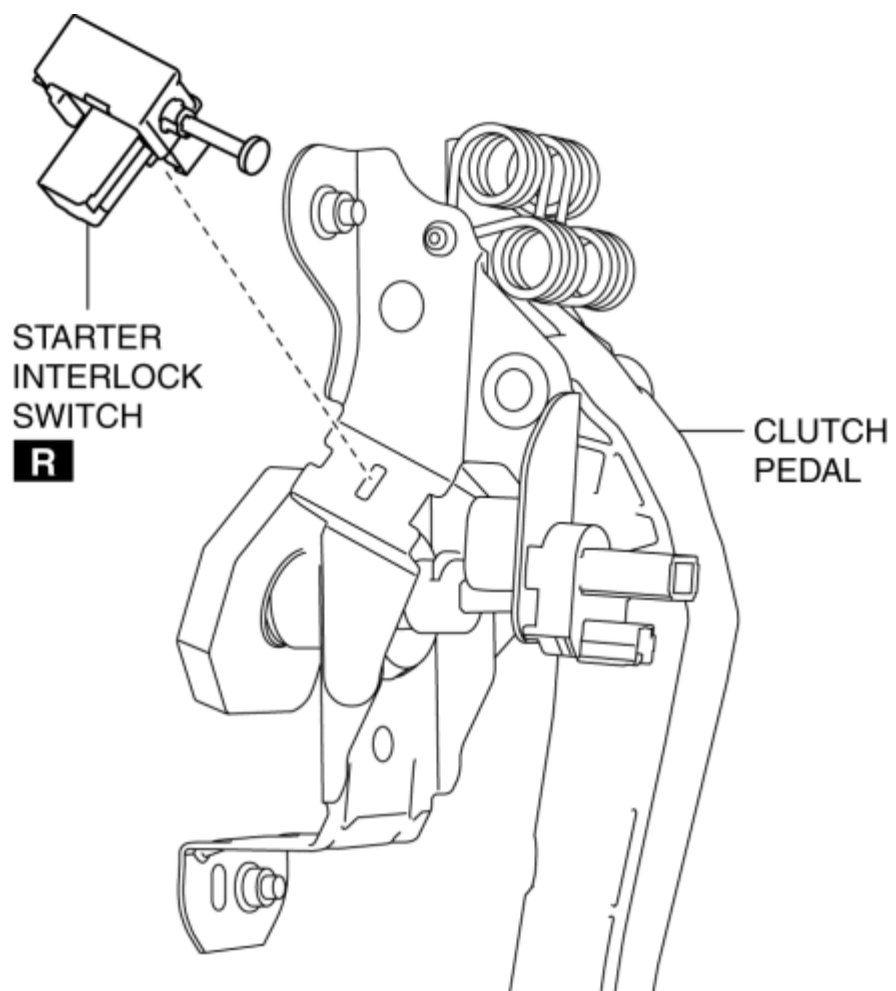
1. Disconnect the negative battery cable. (See **NEGATIVE BATTERY CABLE DISCONNECTION/CONNECTION [SKYACTIV-G 2.0]**.)
2. Disconnect the starter interlock switch connector.
3. Remove the starter interlock using the following procedure:
  - a. Detach hook A in the direction of the arrow shown in the figure.



- b. Slide the starter interlock switch in the direction of the arrow shown in the figure.

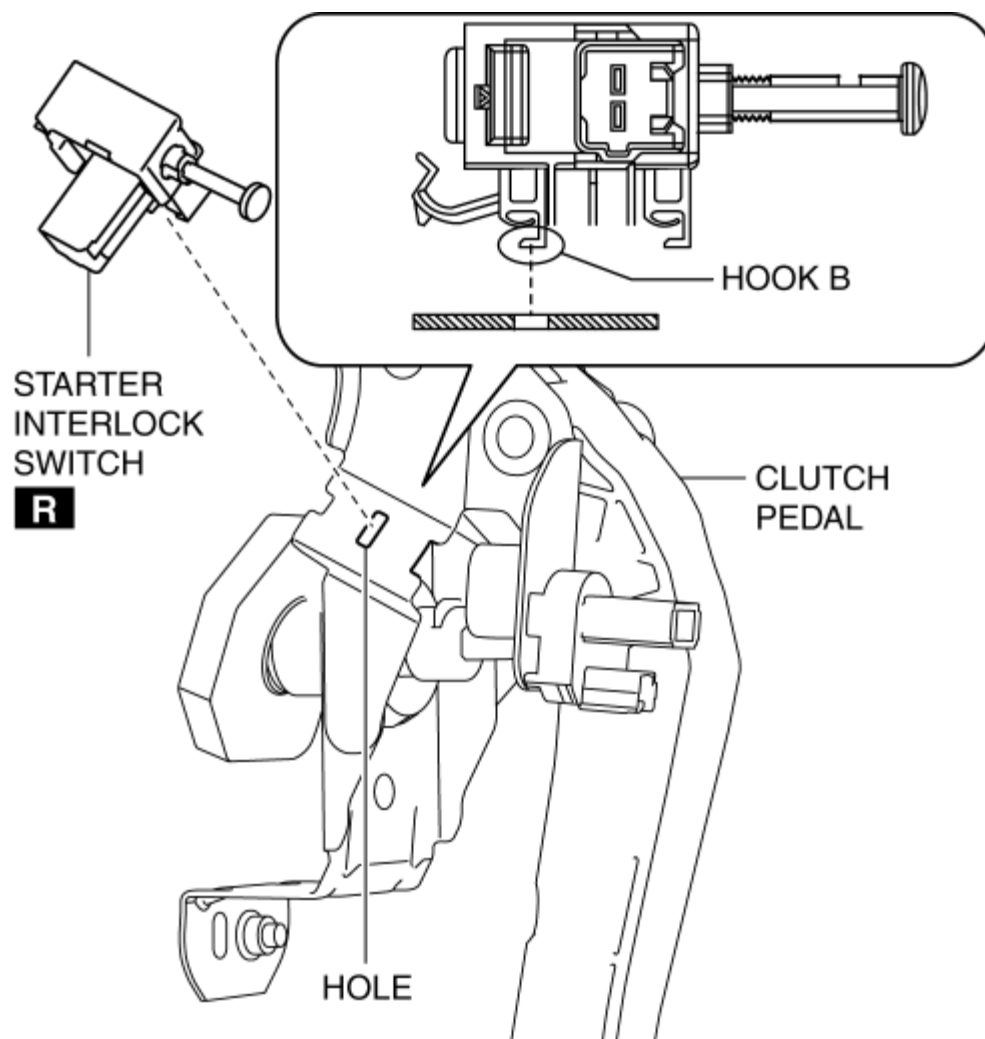


c. Remove the starter interlock switch from the clutch pedal.



4. Install the starter interlock using the following procedure:

- a. Insert hook B of the starter interlock switch into the clutch pedal hole.



b. While pressing the starter interlock switch against the clutch pedal, slide the starter interlock switch until hook A is locked in the direction of the arrow shown in the figure.