

Westinghouse Nofuze panelboards including cabinets are available in various designs to meet the most exacting specifications for lighting and distribution applications. Prefabricated, tool-made parts insure uniformity and provide maximum flexibility to meet job requirements. Coordinated, standardized designs permit simplified interchange of parts without sacrificing performance.

**panelboard index**

description	page
<b>lighting panelboards</b>	
type NT1P (switch and fuse) .....	17
type NT1C (switch and fuse) .....	17
type NR3G (plug fuse only) .....	17
type NPLB (circuit breaker) .....	4
type NPLAB (circuit breaker) .....	5
type NLAB (circuit breaker) .....	6
type NA1B (circuit breaker) .....	7
type NH1B (circuit breaker) .....	8
<b>column type lighting panelboards</b>	
type NLAB-LX (circuit breaker) .....	9
type NH1B-LX (circuit breaker) .....	8
type NA1B-LX (circuit breaker) .....	8
<b>distribution panelboards</b>	
type ABH (circuit breaker) .....	10
type NDP convertible (circuit breaker) .....	11
type CDP convertible (circuit breaker) .....	12-13
type CSF (combination switch and fuse) .....	18-19
<b>panelboard modifications</b> .....	16
<b>ADD-A-CIRKIT panels</b> .....	14-15

September 19, 1955

supersedes Quick Selector section 30-900, pages 1-2, dated March 15, 1955  
mailed to: E/254/PL; D63-1E; C26-1C; DAK



# panelboards with cabinets

## general information

### increased main bus capacity for lighting panelboards

Often, the standard capacities listed, which are based on 15 ampere breakers with 10 amperes average load, may not be sufficient

in which case the main bus capacity (either main lugs or main breaker) should be increased from table below.

mains increased		list price addition—with or without neutral bar					
from	to	main lugs only 2, 3 or 4 wire	main overcurrent protection			◆ fusible mains	
			main breaker			2-pole	3-pole
			2-pole	3-pole	3-pole◆	2-pole	3-pole
50-amp	100-amp	\$10	\$ 29	\$ 41	\$ 24	\$24	\$32
50-amp	200(225)-amp	13	169	208	220	77	97
100-amp	200(225)-amp	13	153	174	203	69	70

© all lighting panelboards except NHB    ◆ NHB panelboards only    ◆ applies only to type NTP panels

### F or K frame main breakers in types NLAB and NALB lighting panelboards only ▲†

For substituting F or K frame breakers in place of E or J frame main breakers, use following table:

main breaker substituted	list price addition ▲	
	2 pole	3 pole
50 amp E frame to 50 amp F frame	\$33	\$35
100 amp E frame to 100 amp F frame	29	31
225 amp J frame to 225 amp K frame	32	52

▲ add for increased mains if required before making breaker substitutions  
† refer to factory for dimensions

### how to write panelboard orders

item number	quantity	description
-------------	----------	-------------

#### example 1

item number	quantity	description
1	1	type NLAB 24-4L 100 lighting panelboard consisting of:
1A	1	panel interior with 15 ampere branches
1B	1	box for above (Catalog No. ....)
1C	1	(flush) (surface) mounting trim for above

#### example 2

item number	quantity	description
1	1	type NDP convertible De-ion distribution panelboard consisting of:
1A	1	panel interior having 400 ampere, 3-phase, 4-wire, 120/208 volt SN, main lugs only and:
		3—100 ampere, 3 pole branches
		2— 50 ampere, 3-pole branches
		6— 30 ampere, 3-pole branches
		1—solid neutral bar
1B	1	box for above
1C	1	(flush) (surface) mounting trim for above

always specify flush or surface mounting

Main lugs or main breaker are always furnished at bottom of panel unless otherwise specified.

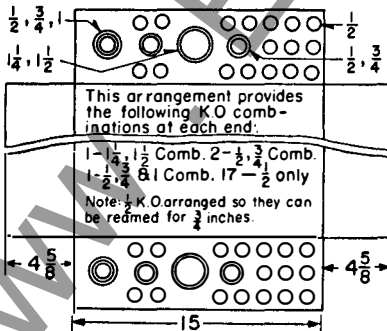
### boxes and trim list prices and cabinet information

**Boxes** will be made from code gauge galvanized steel.

**Trims** will be made from code gauge sheet steel finished with light gray lacquer applied over corrosion inhibiting priming.

See tables for standard knockout arrangements, prices, steel gauge, style numbers, dimensions and shipping weights

**boxes: 15 inches wide by 4 5/8 inches deep (I.D.)**

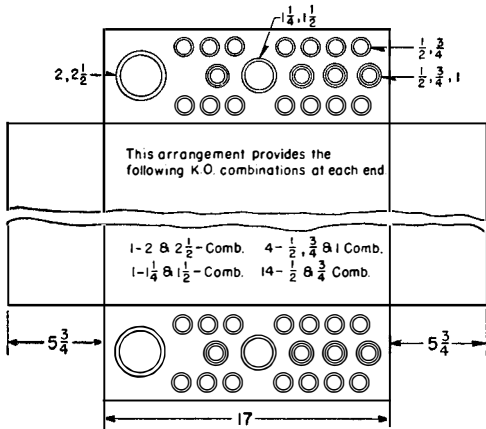


cabinet ref. no.	height inches	box				trim			
		style no.	list price	gauge	ship. wt.	style no.	list price	gauge	ship. wt.
P 20	20	1634 980	\$12	14	17	1648 432	\$20	12	14
P 24	24	1634 981	15	14	19	1648 433	22	12	16
P 28	28	1634 982	19	14	21	1648 434	24	12	19
P 32	32	1634 983	22	14	24	1648 435	26	12	21
P 36	36	1634 984	24	14	26	1648 436	28	12	24

## general information

### boxes and trim list prices and cabinet information—continued

#### boxes: 17 inches wide by 5 3/4 inches deep (I.D.)

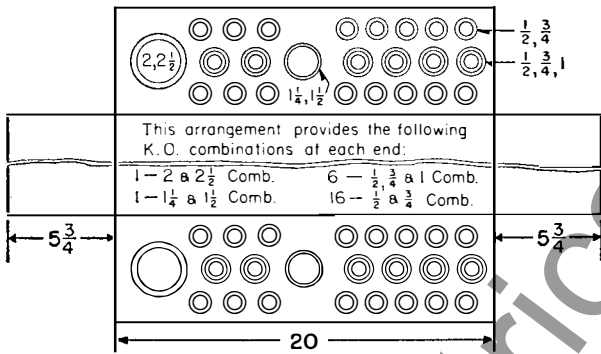


This arrangement provides the following K.O. combinations at each end

1-2 @ 2 1/2" Comb. 4-1 1/2 @ 3/4" a 1 Comb.  
1-1 1/4 @ 1 1/2" Comb. 14-1 1/2 @ 3/4" Comb.

cabinet ref. no.	height inches	box				trim			
		style no.	list price	gauge	ship. wt.	style no.	list price	gauge	ship. wt.
PX 35	35	1634 991	\$24	14	30	1648 438	\$29	12	25
PX 39	39	1634 992	28	14	33	1648 439	32	12	27
PX 43	43	1634 993	32	12	49	1648 440	35	12	29
PX 47	47	1634 994	36	12	53	1648 441	38	12	32
PX 51	51	1634 995	40	12	57	1648 442	41	12	34

#### boxes: 20 inches wide by 5 3/4 inches deep (I.D.)

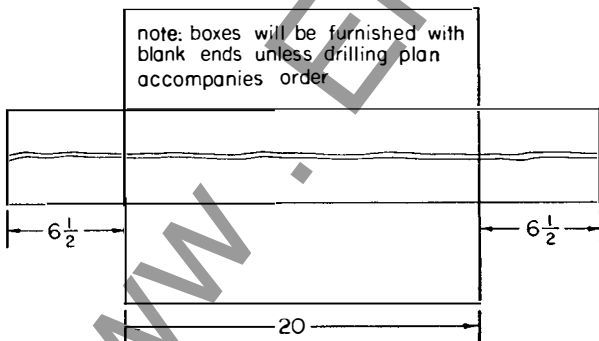


This arrangement provides the following K.O. combinations at each end:

1-2 @ 2 1/2" Comb. 6-1 1/2 @ 3/4" a 1 Comb.  
1-1 1/4 @ 1 1/2" Comb. 16-1 1/2 @ 3/4" Comb.

cabinet ref. no.	height inches	box				trim			
		style no.	list price	gauge	ship. wt.	style no.	list price	gauge	ship. wt.
C 17	16 1/4	K-80001	\$13	14	20	K-80018	\$20	12	17
C 19	19	K-80002	14	14	22	K-80019	21	12	19
C 22	21 3/4	K-80003	16	14	24	K-80020	22	12	21
C 25	24 1/2	K-80004	17	14	26	K-80021	23	12	23
C 28	27 1/4	K-80005	19	14	28	K-80022	24	12	25
C 30	30	K-80006	20	14	30	K-80023	25	12	27
C 33	32 3/4	K-80007	23	14	32	K-80024	27	12	30
C 36	35 1/2	K-80008	25	14	34	K-80025	29	12	32
C 39	38 1/4	K-80009	28	14	36	K-80026	31	12	34
C 41	41	K-80010	30	12	53	K-80027	33	12	37
C 44	43 3/4	K-80011	33	12	56	K-80028	35	12	39
C 47	46 1/2	K-80012	35	12	59	K-80029	38	12	41
C 50	49 1/4	K-80013	38	12	61	K-80030	41	12	44
C 52	52	K-80014	41	12	64	K-80031	44	12	46
C 55	54 3/4	K-80015	44	12	67	K-80032	47	12	49
C 58	57 1/2	K-80016	47	12	70	K-80033	50	12	53
C 61	60 1/4	K-80017	50	10	93	K-80034	54	10	66

#### boxes: 20 inches wide by 6 1/2 inches deep (I.D.)



note: boxes will be furnished with blank ends unless drilling plan accompanies order

cabinet ref. no.	height inches	box				trim			
		style no.	list price	gauge	ship. wt.	style no.	list price	gauge	ship. wt.
CX-22	21 3/4	1648 503	\$16	14	26	K-80020	\$22	12	21
CX-25	24 1/2	1648 504	17	14	28	K-80021	23	13	23
CX-28	27 1/4	1648 505	19	14	30	K-80022	24	12	25
CX-30	30	1648 506	20	14	32	K-80023	25	12	27
CX-33	32 3/4	1648 507	23	14	34	K-80024	27	12	30
CX-36	35 1/2	1648 508	25	14	36	K-80025	29	12	32
CX-39	38 1/4	1648 509	28	14	38	K-80026	31	12	34
CX-41	41	1648 510	30	12	55	K-80027	33	12	37
CX-44	43 3/4	1648 511	33	12	58	K-80028	35	12	39
CX-47	46 1/2	1648 512	35	12	61	K-80029	38	12	41
CX-50	49 1/4	1648 513	38	12	63	K-80030	41	12	44
CX-52	52	1648 514	41	12	66	K-80031	44	12	46
CX-55	54 3/4	1648 515	44	12	69	K-80032	47	12	49
CX-58	57 1/2	1648 516	47	12	72	K-80033	50	12	53
CX-61	60 1/4	1648 517	50	10	95	K-80034	54	10	66
CX-64	63	1648 518	54	10	99	K-80483	55	10	70
CX-66	65 3/4	1648 519	58	10	103	1737845	60	10	74
CX-69	68 1/2	1648 520	65	10	107	1737846	65	10	78

September 19, 1955

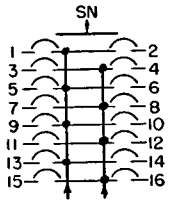
supersedes Quick Selector section 30-900, pages 3-4, dated March 15, 1955  
mailed to: E/254/PL; D63-1E; C26-1C; DAK

prices are effective September 19, 1955 and subject to change without notice  
discount symbol G selling policy 30-000



# lighting panelboards

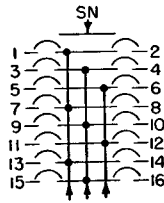
## PL frame AB circuit breaker type



**3 wire SN**  
**120/240 volts**  
**a-c only**

type  
**NPLB-3**

**boxes:**  
15" wide by 4 5/8" deep, 4" wiring gutters  
◆17" wide by 5 3/4" deep, 4" wiring gutters



**3 phase**  
**4 wire SN**  
**120/208 volts**

type  
**NPLB-4**

**boxes:**  
15" wide by 4 5/8" deep, 4" wiring gutters  
◆17" wide by 5 3/4" deep, 4" wiring gutters

no. of poles	catalog number+	list price	mains ampere rating	mains wire range	cabinet reference number ▲	approx. shipping weight
--------------	-----------------	------------	---------------------	------------------	----------------------------	-------------------------

### lugs only in mains

8	NPLB08-3L100	\$ 92	100	14-1/0	P 20	41
10	NPLB10-3L100	101	100	14-1/0	P 20	41
12	NPLB12-3L100	110	100	14-1/0	P 20	41
14	NPLB14-3L100	119	100	14-1/0	P 24	49
16	NPLB16-3L100	128	100	14-1/0	P 24	49
18	NPLB18-3L100	137	100	14-1/0	P 24	49
20	NPLB20-3L100	146	100	14-1/0	P 24	49
22	NPLB22-3L200	159	200	1/0-4/0	P 28	58
24	NPLB24-3L200	168	200	1/0-4/0	P 28	58
26	NPLB26-3L200	177	200	1/0-4/0	P 28	58
28	NPLB28-3L200	186	200	1/0-4/0	P 28	58
30	NPLB30-3L200	195	200	1/0-4/0	P 32	67
32	NPLB32-3L200	204	200	1/0-4/0	P 32	67
34	NPLB34-3L200	213	200	1/0-4/0	P 32	67
36	NPLB36-3L200	222	200	1/0-4/0	P 32	67
38	NPLB38-3L200	231	200	1/0-4/0	P 36	76
40	NPLB40-3L200	240	200	1/0-4/0	P 36	76
42	NPLB42-3L225	249	225	1/0-4/0	P 36	76

### 2 pole main breaker

8	NPLB08-3AB050	\$122	50	12-2	P 24	54
10	NPLB10-3AB050	131	50	12-2	P 28	63
12	NPLB12-3AB100	159	100	6-1/0	P 28	63
14	NPLB14-3AB100	168	100	6-1/0	P 28	63
16	NPLB16-3AB100	177	100	6-1/0	P 28	63
18	NPLB18-3AB100	186	100	6-1/0	P 32	72
20	NPLB20-3AB100	195	100	6-1/0	P 32	72
22	NPLB22-3AB200	349	200	6-3/50	◆PX 39	104
24	NPLB24-3AB200	358	200	6-3/50	◆PX 39	104
26	NPLB26-3AB200	367	200	6-3/50	◆PX 43	123
28	NPLB28-3AB200	376	200	6-3/50	◆PX 43	123
30	NPLB30-3AB200	385	200	6-3/50	◆PX 43	123
32	NPLB32-3AB200	394	200	6-3/50	◆PX 43	123
34	NPLB34-3AB200	403	200	6-3/50	◆PX 47	132
36	NPLB36-3AB200	412	200	6-3/50	◆PX 47	132
38	NPLB38-3AB200	421	200	6-3/50	◆PX 47	132
40	NPLB40-3AB200	430	200	6-3/50	◆PX 47	132
42	NPLB42-3AB225	439	225	6-3/50	◆PX 51	141

◆ **circuit breakers:** 15 ampere, single pole, 120 volt a-c branch breakers will be furnished unless otherwise specified. 20, 30, 40 and 50 ampere ratings can be supplied at the same price except increased main bus capacity may be required. See page 2 for price addition for increased mains capacity.

**main breakers:** E frame through 100 amperes  
J frame for 200-225 amperes

**space only or provision for future breakers:** Figure the panelboard on the basis of the total number of branches including futures and then deduct **\$2.40** list for each single pole breaker omitted.

no. of poles	catalog number+	list price	mains ampere rating	mains wire range	cabinet reference number ▲	approx. shipping weight
--------------	-----------------	------------	---------------------	------------------	----------------------------	-------------------------

### lugs only in mains

8	NPLB08-4L100	\$102	100	14-1/0	P 20	42
10	NPLB10-4L100	111	100	14-1/0	P 20	42
12	NPLB12-4L100	120	100	14-1/0	P 20	42
14	NPLB14-4L100	129	100	14-1/0	P 24	50
16	NPLB16-4L100	138	100	14-1/0	P 24	50
18	NPLB18-4L100	147	100	14-1/0	P 24	50
20	NPLB20-4L100	156	100	14-1/0	P 24	50
22	NPLB22-4L100	165	100	14-1/0	P 28	59
24	NPLB24-4L100	174	100	14-1/0	P 28	59
26	NPLB26-4L100	183	100	14-1/0	P 28	59
28	NPLB28-4L100	192	100	14-1/0	P 28	59
30	NPLB30-4L100	201	100	14-1/0	P 32	68
32	NPLB32-4L200	216	200	1/0-4/0	P 32	69
34	NPLB34-4L200	225	200	1/0-4/0	P 32	69
36	NPLB36-4L200	234	200	1/0-4/0	P 32	69
38	NPLB38-4L200	243	200	1/0-4/0	P 36	78
40	NPLB40-4L200	252	200	1/0-4/0	P 36	78
42	NPLB42-4L200	261	200	1/0-4/0	P 36	78

### 3 pole main breaker

8	NPLB08-4AB050	\$146	50	12-2	P 24	58
10	NPLB10-4AB050	155	50	12-2	P 28	67
12	NPLB12-4AB050	164	50	12-2	P 28	67
14	NPLB14-4AB050	173	50	12-2	P 28	67
16	NPLB16-4AB100	202	100	6-1/0	P 28	67
18	NPLB18-4AB100	211	100	6-1/0	P 32	76
20	NPLB20-4AB100	220	100	6-1/0	P 32	76
22	NPLB22-4AB100	229	100	6-1/0	P 32	76
24	NPLB24-4AB100	238	100	6-1/0	P 32	76
26	NPLB26-4AB100	247	100	6-1/0	P 36	85
28	NPLB28-4AB100	256	100	6-1/0	P 36	85
30	NPLB30-4AB100	265	100	6-1/0	P 36	85
32	NPLB32-4AB200	449	200	6-3/50	◆PX 43	127
34	NPLB34-4AB200	458	200	6-3/50	◆PX 47	136
36	NPLB36-4AB200	467	200	6-3/50	◆PX 47	136
38	NPLB38-4AB200	476	200	6-3/50	◆PX 47	136
40	NPLB40-4AB200	485	200	6-3/50	◆PX 47	136
42	NPLB42-4AB200	494	200	6-3/50	◆PX 51	145

**handle extensions:** For each pair of single pole breakers equipped with handle extensions to provide double pole manual operation, add **\$50** list.

**2 pole common trip breaker:** For each 2 pole common trip Quicklag P breaker substituted for 2 single pole type PL, add **\$1.30** list.

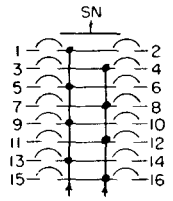
▲ **Last two digits** indicate approximate box height. For actual heights, see pages 2 and 3.

◆ 17 in. wide by 5 3/4 in. deep boxes.

# lighting panelboards

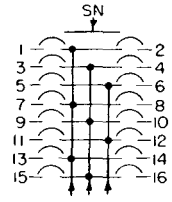
**Q.S.**  
30-900  
page 5

## Quicklag P AB De-ion circuit breaker type



**3 wire SN**  
**120/240 volts**  
**a-c only**  
**type NPLAB-3**

**boxes:**  
15" wide by 4 5/8" deep, 4" wiring gutters  
◆ 17" wide by 5 3/4" deep, 4" wiring gutters



**3 phase**  
**4 wire SN**  
**120/208 volts**  
**type NPLAB-4**

**boxes:**  
15" wide by 4 5/8" deep, 4" wiring gutters  
◆ 17" wide by 5 3/4" deep, 4" wiring gutters

no. of poles	catalog number †	list price	mains ampere rating	mains wire range	cabinet reference number ▲	approx. shipping weight
<b>lugs only in mains</b>						
8	NPLAB08-3L100	\$ 96	100	14-1/0	P 20	41
10	NPLAB10-3L100	106	100	14-1/0	P 20	41
12	NPLAB12-3L100	116	100	14-1/0	P 20	41
14	NPLAB14-3L100	126	100	14-1/0	P 24	49
16	NPLAB16-3L100	136	100	14-1/0	P 24	49
18	NPLAB18-3L100	146	100	14-1/0	P 24	49
20	NPLAB20-3L100	156	100	14-1/0	P 24	49
22	NPLAB22-3L200	170	200	1/0-4/0	P 28	58
24	NPLAB24-3L200	180	200	1/0-4/0	P 28	58
26	NPLAB26-3L200	190	200	1/0-4/0	P 28	58
28	NPLAB28-3L200	200	200	1/0-4/0	P 28	58
30	NPLAB30-3L200	210	200	1/0-4/0	P 32	67
32	NPLAB32-3L200	220	200	1/0-4/0	P 32	67
34	NPLAB34-3L200	230	200	1/0-4/0	P 32	67
36	NPLAB36-3L200	240	200	1/0-4/0	P 32	67
38	NPLAB38-3L200	250	200	1/0-4/0	P 36	76
40	NPLAB40-3L200	260	200	1/0-4/0	P 36	76
42	NPLAB42-3L225	270	225	1/0-4/0	P 36	76

no. of poles	catalog number †	list price	mains ampere rating	mains wire range	cabinet reference number ▲	approx. shipping weight
<b>lugs only in mains</b>						
8	NPLAB08-4L100	\$106	100	14-1/0	P 20	42
10	NPLAB10-4L100	116	100	14-1/0	P 20	42
12	NPLAB12-4L100	126	100	14-1/0	P 20	42
14	NPLAB14-4L100	136	100	14-1/0	P 24	50
16	NPLAB16-4L100	146	100	14-1/0	P 24	50
18	NPLAB18-4L100	156	100	14-1/0	P 24	50
20	NPLAB20-4L100	166	100	14-1/0	P 24	50
22	NPLAB22-4L100	176	100	14-1/0	P 28	59
24	NPLAB24-4L100	186	100	14-1/0	P 28	59
26	NPLAB26-4L100	196	100	14-1/0	P 28	59
28	NPLAB28-4L100	206	100	14-1/0	P 28	59
30	NPLAB30-4L100	216	100	14-1/0	P 32	68
32	NPLAB32-4L200	232	200	1/0-4/0	P 32	69
34	NPLAB34-4L200	242	200	1/0-4/0	P 32	69
36	NPLAB36-4L200	252	200	1/0-4/0	P 32	69
38	NPLAB38-4L200	262	200	1/0-4/0	P 36	78
40	NPLAB40-4L200	272	200	1/0-4/0	P 36	78
42	NPLAB42-4L200	282	200	1/0-4/0	P 36	78

no. of poles	catalog number †	list price	mains ampere rating	mains wire range	cabinet reference number ▲	approx. shipping weight
<b>2 pole main breaker</b>						
8	NPLAB08-3AB050	\$126	50	12-2	P 24	54
10	NPLAB10-3AB050	136	50	12-2	P 28	63
12	NPLAB12-3AB100	165	100	6-1/0	P 28	63
14	NPLAB14-3AB100	175	100	6-1/0	P 28	63
16	NPLAB16-3AB100	185	100	6-1/0	P 28	63
18	NPLAB18-3AB100	195	100	6-1/0	P 32	72
20	NPLAB20-3AB100	205	100	6-1/0	P 32	72
22	NPLAB22-3AB200	360	200	6-350	◆PX 39	104
24	NPLAB24-3AB200	370	200	6-350	◆PX 39	104
26	NPLAB26-3AB200	380	200	6-350	◆PX 43	123
28	NPLAB28-3AB200	390	200	6-350	◆PX 43	123
30	NPLAB30-3AB200	400	200	6-350	◆PX 43	123
32	NPLAB32-3AB200	410	200	6-350	◆PX 43	123
34	NPLAB34-3AB200	420	200	6-350	◆PX 47	132
36	NPLAB36-3AB200	430	200	6-350	◆PX 47	132
38	NPLAB38-3AB200	440	200	6-350	◆PX 47	132
40	NPLAB40-3AB200	450	200	6-350	◆PX 47	132
42	NPLAB42-3AB225	460	225	6-350	◆PX 51	141

no. of poles	catalog number †	list price	mains ampere rating	mains wire range	cabinet reference number ▲	approx. shipping weight
<b>3 pole main breaker</b>						
8	NPLAB08-4AB050	\$150	50	12-2	P 24	58
10	NPLAB10-4AB050	160	50	12-2	P 28	67
12	NPLAB12-4AB050	170	50	12-2	P 28	67
14	NPLAB14-4AB050	180	50	12-2	P 28	67
16	NPLAB16-4AB100	210	100	6-1/0	P 28	67
18	NPLAB18-4AB100	220	100	6-1/0	P 32	76
20	NPLAB20-4AB100	230	100	6-1/0	P 32	76
22	NPLAB22-4AB100	240	100	6-1/0	P 32	76
24	NPLAB24-4AB100	250	100	6-1/0	P 32	76
26	NPLAB26-4AB100	260	100	6-1/0	P 36	85
28	NPLAB28-4AB100	270	100	6-1/0	P 36	85
30	NPLAB30-4AB100	280	100	6-1/0	P 36	85
32	NPLAB32-4AB200	465	200	6-350	◆PX 43	127
34	NPLAB34-4AB200	475	200	6-350	◆PX 47	136
36	NPLAB36-4AB200	485	200	6-350	◆PX 47	136
38	NPLAB38-4AB200	495	200	6-350	◆PX 47	136
40	NPLAB40-4AB200	505	200	6-350	◆PX 47	136
42	NPLAB42-4AB200	515	200	6-350	◆PX 51	145

† **circuit breakers:** 15 ampere, single pole, 120 volt a-c branch breakers will be furnished unless otherwise specified. 20, 30, 40 and 50 ampere ratings can be supplied at the same price except increased main bus capacity may be required. See page 2 for price addition for increased mains capacity.

**main breakers:** E frame through 100 amperes  
J frame for 200-225 amperes

**space only or provision for future breakers:** Figure the panelboard on the basis of the total number of branches

including futures and then deduct **\$2.90** list for each single pole breaker omitted.

**handle extensions:** For each pair of single pole breakers equipped with handle extensions to provide double pole manual operation, add **\$.50** list.

**2 pole common trip breaker:** For each 2 pole common trip Quicklag P substituted for 2 single pole, add **\$.20** list.

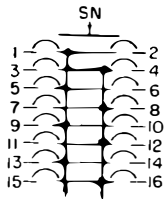
▲ **Last two digits** indicate approximate box height. For actual heights, see pages 2 and 3.

◆ 17 in. wide by 5 3/4 in. deep boxes.



# lighting panelboards

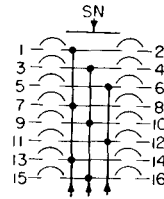
## Quicklag AB De-ion circuit breaker type



**3 wire SN**  
**120/240 volts**  
**a-c only**

type  
**NLAB-3**

boxes:  
20" wide by 5 3/4" deep, 4" wiring gutters



**3 phase**  
**4 wire SN**  
**120/208 volts**

type  
**NLAB-4**

boxes:  
20" wide by 5 3/4" deep, 4" wiring gutters

no. of poles	catalog number +	list price	mains ampere rating	mains wire range	cabinet reference number ▲	approx. shipping weight
--------------	------------------	------------	---------------------	------------------	----------------------------	-------------------------

### lugs only in mains

8	NLAB08-3L100	\$106	100	14-1/0	C 19	54
10	NLAB10-3L100	118	100	14-1/0	C 22	62
12	NLAB12-3L100	130	100	14-1/0	C 22	62
14	NLAB14-3L100	142	100	14-1/0	C 22	64
16	NLAB16-3L100	154	100	14-1/0	C 22	64
18	NLAB18-3L100	166	100	14-1/0	C 25	72
20	NLAB20-3L100	178	100	14-1/0	C 25	72
22	NLAB22-3L200	194	200	6-250	C 28	83
24	NLAB24-3L200	206	200	6-250	C 28	83
26	NLAB26-3L200	218	200	6-250	C 30	91
28	NLAB28-3L200	230	200	6-250	C 30	91
30	NLAB30-3L200	242	200	6-250	C 30	93
32	NLAB32-3L200	254	200	6-250	C 30	93
34	NLAB34-3L200	266	200	6-250	C 33	101
36	NLAB36-3L200	278	200	6-250	C 33	101
38	NLAB38-3L200	290	200	6-250	C 36	110
40	NLAB40-3L200	302	200	6-250	C 36	110
42	NLAB42-3L225	314	225	6-250	C 36	112

no. of poles	catalog number +	list price	mains ampere rating	mains wire range	cabinet reference number ▲	approx. shipping weight
--------------	------------------	------------	---------------------	------------------	----------------------------	-------------------------

### lugs only in mains

8	NLAB08-4L100	\$116	100	14-1/0	C 19	55
10	NLAB10-4L100	128	100	14-1/0	C 22	63
12	NLAB12-4L100	140	100	14-1/0	C 22	63
14	NLAB14-4L100	152	100	14-1/0	C 22	65
16	NLAB16-4L100	164	100	14-1/0	C 22	65
18	NLAB18-4L100	176	100	14-1/0	C 25	73
20	NLAB20-4L100	188	100	14-1/0	C 25	73
22	NLAB22-4L100	200	100	14-1/0	C 28	84
24	NLAB24-4L100	212	100	14-1/0	C 28	84
26	NLAB26-4L100	224	100	14-1/0	C 30	92
28	NLAB28-4L100	236	100	14-1/0	C 30	92
30	NLAB30-4L100	248	100	14-1/0	C 30	95
32	NLAB32-4L200	266	200	6-250	C 30	95
34	NLAB34-4L200	278	200	6-250	C 33	103
36	NLAB36-4L200	290	200	6-250	C 33	103
38	NLAB38-4L200	302	200	6-250	C 36	112
40	NLAB40-4L200	314	200	6-250	C 36	112
42	NLAB42-4L200	326	200	6-250	C 36	114

### 2 pole main breaker

8	NLAB08-3AB050	\$136	50	12-2	C 25	67
10	NLAB10-3AB050	148	50	12-2	C 28	76
12	NLAB12-3AB100	179	100	6-1/0	C 28	76
14	NLAB14-3AB100	191	100	6-1/0	C 28	78
16	NLAB16-3AB100	203	100	6-1/0	C 28	78
18	NLAB18-3AB100	215	100	6-1/0	C 30	85
20	NLAB20-3AB100	227	100	6-1/0	C 30	85
22	NLAB22-3AB200	384	200	6-350	C 39	115
24	NLAB24-3AB200	396	200	6-350	C 39	115
26	NLAB26-3AB200	408	200	6-350	C 41	137
28	NLAB28-3AB200	420	200	6-350	C 41	137
30	NLAB30-3AB200	432	200	6-350	C 41	139
32	NLAB32-3AB200	444	200	6-350	C 41	139
34	NLAB34-3AB200	456	200	6-350	C 44	146
36	NLAB36-3AB200	468	200	6-350	C 44	146
38	NLAB38-3AB200	480	200	6-350	C 47	153
40	NLAB40-3AB200	492	200	6-350	C 47	153
42	NLAB42-3AB225	504	225	6-350	C 47	155

### 3 pole main breaker

8	NLAB08-4AB050	\$160	50	12-2	C 25	68
10	NLAB10-4AB050	172	50	12-2	C 28	77
12	NLAB12-4AB050	184	50	12-2	C 28	77
14	NLAB14-4AB050	196	50	12-2	C 28	79
16	NLAB16-4AB100	228	100	6-1/0	C 28	79
18	NLAB18-4AB100	240	100	6-1/0	C 30	86
20	NLAB20-4AB100	252	100	6-1/0	C 30	86
22	NLAB22-4AB100	264	100	6-1/0	C 33	94
24	NLAB24-4AB100	276	100	6-1/0	C 33	94
26	NLAB26-4AB100	288	100	6-1/0	C 36	102
28	NLAB28-4AB100	300	100	6-1/0	C 36	102
30	NLAB30-4AB100	312	100	6-1/0	C 36	104
32	NLAB32-4AB200	499	200	6-350	C 41	141
34	NLAB34-4AB200	511	200	6-350	C 44	148
36	NLAB36-4AB200	523	200	6-350	C 44	148
38	NLAB38-4AB200	535	200	6-350	C 47	155
40	NLAB40-4AB200	547	200	6-350	C 47	155
42	NLAB42-4AB200	559	200	6-350	C 47	157

+ **circuit breakers:** 15 ampere, single pole, 120 volt a-c branch breakers will be furnished unless otherwise specified. 20, 30, 40 and 50 ampere ratings can be supplied at the same price except increased main bus capacity may be required. See page 2 for price additions for increased mains capacity.

**main breakers:** E frame through 100 amperes  
J frame for 200-225 amperes

**space only or provision for future breakers:** Figure the panelboard on the basis of the total number of branches including futures and then deduct \$3.40 list for each single pole breaker omitted.

**handle extensions:** For each pair of single pole breakers equipped with handle extensions to provide double pole manual operation, add \$.50 list.

**2 pole common trip breaker:** For each 2 pole common trip Quicklag substituted for 2 single pole, add \$5.80 list.

▲ **Last two digits** indicate approximate box height. For actual heights, see pages 2 and 3.

**two and/or three pole 15-50 ampere E frame breakers (type NLAB-AB panels):** Select panel having required number of Quicklag breakers (including any future spaces) and proper mains (adding for increased main bus if necessary), then add \$30 for each two pole 15-50 ampere E frame breaker and \$44 for each 15-50 ampere three pole E frame breaker required.

**two and/or three pole 70-100 ampere E frame breakers:** (Not more than two breakers per panel are allowed and they will be furnished as subfeed breakers). Add \$49 for each two pole breaker and \$64 for each three pole breaker.

**note:** For panels requiring main bus in excess of 225 amperes, refer to type NDP panels.

# lighting panelboards

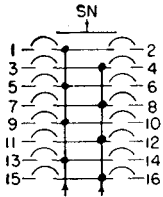
Q.S.

30-900

page 7

## E frame

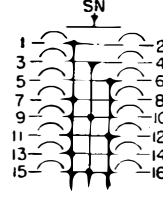
## AB De-ion circuit breaker type



**3 wire SN**  
**120/240 volts**  
**a-c or d-c**

type  
**NAIB-3**

boxes:  
20" wide by 5 3/4" deep, 4" wiring gutters



**3 phase**  
**4 wire SN**  
**120/208 volts**

type  
**NAIB-4**

boxes:  
20" wide by 5 3/4" deep, 4" wiring gutters

no. of poles	catalog number†	list price	mains ampere rating	mains wire range	cabinet reference number ▲	approx. shipping weight
<b>lugs only in mains</b>						
8	NA1B08-3L100	\$158	100	14-1/0	C 19	60
10	NA1B10-3L100	183	100	14-1/0	C 22	67
12	NA1B12-3L100	208	100	14-1/0	C 22	69
14	NA1B14-3L100	233	100	14-1/0	C 25	78
16	NA1B16-3L100	258	100	14-1/0	C 25	80
18	NA1B18-3L100	283	100	14-1/0	C 28	88
20	NA1B20-3L100	308	100	14-1/0	C 28	90
22	NA1B22-3L200	337	200	6-250	C 30	99
24	NA1B24-3L200	362	200	6-250	C 30	101
26	NA1B26-3L200	387	200	6-250	C 33	110
28	NA1B28-3L200	412	200	6-250	C 33	112
30	NA1B30-3L200	437	200	6-250	C 36	121
32	NA1B32-3L200	462	200	6-250	C 36	123
34	NA1B34-3L200	487	200	6-250	C 39	132
36	NA1B36-3L200	512	200	6-250	C 39	134
38	NA1B38-3L200	537	200	6-250	C 41	154
40	NA1B40-3L200	562	200	6-250	C 41	156
42	NA1B42-3L225	587	225	6-250	C 44	165

no. of poles	catalog number†	list price	mains ampere rating	mains wire range	cabinet reference number ▲	approx. shipping weight
<b>lugs only in mains</b>						
8	NA1B08-4L100	\$168	100	14-1/0	C 19	61
10	NA1B10-4L100	193	100	14-1/0	C 22	68
12	NA1B12-4L100	218	100	14-1/0	C 22	70
14	NA1B14-4L100	243	100	14-1/0	C 25	79
16	NA1B16-4L100	268	100	14-1/0	C 25	81
18	NA1B18-4L100	293	100	14-1/0	C 28	89
20	NA1B20-4L100	318	100	14-1/0	C 28	91
22	NA1B22-4L100	343	100	14-1/0	C 30	99
24	NA1B24-4L100	368	100	14-1/0	C 30	101
26	NA1B26-4L100	393	100	14-1/0	C 33	110
28	NA1B28-4L100	418	100	14-1/0	C 33	112
30	NA1B30-4L100	443	100	14-1/0	C 36	121
32	NA1B32-4L200	474	200	6-250	C 36	125
34	NA1B34-4L200	499	200	6-250	C 39	134
36	NA1B36-4L200	524	200	6-250	C 39	136
38	NA1B38-4L200	549	200	6-250	C 41	156
40	NA1B40-4L200	574	200	6-250	C 41	158
42	NA1B42-4L200	599	200	6-250	C 44	167

### 2 pole main breaker

no. of poles	catalog number†	list price	mains ampere rating	mains wire range	cabinet reference number ▲	approx. shipping weight
8	NA1B08-3AB050	\$188	50	12-2	C 25	72
10	NA1B10-3AB050	213	50	12-2	C 28	79
12	NA1B12-3AB100	257	100	6-1/0	C 28	81
14	NA1B14-3AB100	282	100	6-1/0	C 30	90
16	NA1B16-3AB100	307	100	6-1/0	C 30	92
18	NA1B18-3AB100	332	100	6-1/0	C 33	100
20	NA1B20-3AB100	357	100	6-1/0	C 33	102
22	NA1B22-3AB200	527	200	6-350	C 41	148
24	NA1B24-3AB200	552	200	6-350	C 41	150
26	NA1B26-3AB200	577	200	6-350	C 44	158
28	NA1B28-3AB200	602	200	6-350	C 44	160
30	NA1B30-3AB200	627	200	6-350	C 47	168
32	NA1B32-3AB200	652	200	6-350	C 47	170
34	NA1B34-3AB200	677	200	6-350	C 50	178
36	NA1B36-3AB200	702	200	6-350	C 50	180
38	NA1B38-3AB200	727	200	6-350	C 52	188
40	NA1B40-3AB200	752	200	6-350	C 52	190
42	NA1B42-3AB225	777	225	6-350	C 55	198

### 3 pole main breaker

no. of poles	catalog number†	list price	mains ampere rating	mains wire range	cabinet reference number ▲	approx. shipping weight
8	NA1B08-4AB050	\$212	50	12-2	C 25	75
10	NA1B10-4AB050	237	50	12-2	C 28	82
12	NA1B12-4AB050	262	50	12-2	C 28	84
14	NA1B14-4AB050	287	50	12-2	C 30	93
16	NA1B16-4AB100	332	100	6-1/0	C 30	95
18	NA1B18-4AB100	357	100	6-1/0	C 33	103
20	NA1B20-4AB100	382	100	6-1/0	C 33	105
22	NA1B22-4AB100	407	100	6-1/0	C 36	113
24	NA1B24-4AB100	432	100	6-1/0	C 36	115
26	NA1B26-4AB100	457	100	6-1/0	C 39	123
28	NA1B28-4AB100	482	100	6-1/0	C 39	125
30	NA1B30-4AB100	507	100	6-1/0	C 41	133
32	NA1B32-4AB200	707	200	6-350	C 47	173
34	NA1B34-4AB200	732	200	6-350	C 50	181
36	NA1B36-4AB200	757	200	6-350	C 50	183
38	NA1B38-4AB200	782	200	6-350	C 52	191
40	NA1B40-4AB200	807	200	6-350	C 52	193
42	NA1B42-4AB200	832	200	6-350	C 55	201

† circuit breakers: 15 ampere, single pole 120 volt a-c or d-c branch breakers will be furnished unless otherwise specified. 20, 30, 40 and 50 ampere ratings can be supplied at the same price except increased main bus capacity may be required. See page 2 for price additions for increased mains capacity.

**main breakers:** E frame through 100 amperes  
J frame for 200-225 amperes

**space only or provision for future breakers:** Figure the panelboard on the basis of the total number of branches including futures and then deduct \$9.00 list for each single pole breaker omitted.

**two and/or three pole 15-50 ampere branches:** Convert two and three pole breakers to the equivalent number of single pole breakers, then select panel having total number of single pole branches required and add \$5 list for each two pole breaker substituted for two single pole and \$6.50 for each three pole breaker substituted for three single pole.

**two and/or three pole 70-100 ampere branches:** (Not more than two breakers per panel are allowed and they will be furnished as subfeed breakers). Add \$49 for each two pole breaker and \$64 for each three pole breaker.

**solid neutral bar:** If no solid neutral bar is required, deduct \$10 list.

▲ Last two digits indicate approximate box height. For actual heights, see pages 2 and 3.

September 26, 1955

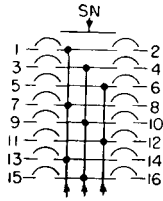
supersedes Quick Selector section 30-900, pages 7-8, dated September 19, 1955  
mailed to: E/254/PL; D63-1E; C26-1C; DAK

prices are effective September 19, 1955 and subject to change without notice  
discount symbol G selling policy 30-000



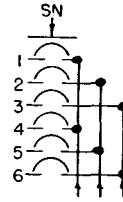
# lighting panelboards

## 277 volts E frame AB De-ion circuit breaker type



**3 phase**  
**4 wire SN**  
**277/480 volts**  
**type NH1B-4**

**boxes:**  
20" wide by 5 3/4" deep, 4" wiring gutter



**3 phase**  
**4 wire SN**  
**277/480 volts**  
**column type NH1B-4LX**

**boxes:**  
8 5/8" wide by 5 5/8" deep

no. of poles	catalog number +⊙	list price	mains ampere rating	mains wire range	cabinet reference number ▲	approx. shipping weight
<b>lugs only in mains</b>						
8	NH1B08-4L100	\$192	100	14-1/0	C 19	61
10	NH1B10-4L100	223	100	14-1/0	C 22	68
12	NH1B12-4L100	254	100	14-1/0	C 22	70
14	NH1B14-4L100	285	100	14-1/0	C 25	79
16	NH1B16-4L100	316	100	14-1/0	C 25	81
18	NH1B18-4L100	347	100	14-1/0	C 28	89
20	NH1B20-4L100	378	100	14-1/0	C 28	91
22	NH1B22-4L100	409	100	14-1/0	C 30	99
24	NH1B24-4L100	440	100	14-1/0	C 30	101
26	NH1B26-4L100	471	100	14-1/0	C 33	110
28	NH1B28-4L100	502	100	14-1/0	C 33	112
30	NH1B30-4L100	533	100	14-1/0	C 36	121
32	NH1B32-4L200	570	200	6-250	C 36	125
34	NH1B34-4L200	601	200	6-250	C 39	134
36	NH1B36-4L200	632	200	6-250	C 39	136
38	NH1B38-4L200	663	200	6-250	C 41	156
40	NH1B40-4L200	694	200	6-250	C 41	158
42	NH1B42-4L200	725	200	6-250	C 44	167

### 3 pole main breaker

no. of poles	catalog number +⊙	list price	mains ampere rating	mains wire range	cabinet reference number ▲	approx. shipping weight
8	NH1B08-4AB050	\$269	50	14-1/0	C 30	88
10	NH1B10-4AB050	300	50	14-1/0	C 33	95
12	NH1B12-4AB050	331	50	14-1/0	C 33	97
14	NH1B14-4AB050	362	50	14-1/0	C 36	106
16	NH1B16-4AB100	410	100	14-1/0	C 36	108
18	NH1B18-4AB100	441	100	14-1/0	C 39	116
20	NH1B20-4AB100	472	100	14-1/0	C 39	118
22	NH1B22-4AB100	503	100	14-1/0	C 41	126
24	NH1B24-4AB100	534	100	14-1/0	C 41	128
26	NH1B26-4AB100	565	100	14-1/0	C 44	136
28	NH1B28-4AB100	596	100	14-1/0	C 44	138
30	NH1B30-4AB100	627	100	14-1/0	C 47	146
32	NH1B32-4AB200	803	200	6-350	C 47	173
34	NH1B34-4AB200	834	200	6-350	C 50	181
36	NH1B36-4AB200	865	200	6-350	C 50	183
38	NH1B38-4AB200	896	200	6-350	C 52	191
40	NH1B40-4AB200	927	200	6-350	C 52	193
42	NH1B42-4AB200	958	200	6-350	C 55	201

+ **circuit breakers:** 15 ampere, single pole 277 volt a-c branch breakers will be furnished unless otherwise specified. 20 ampere ratings can be supplied at the same price except increased main bus capacity may be required. See page 2 for price additions for increased mains capacity.

⊙ **space only or provision for future breakers:** Figure the panelboard on the basis of the total number of branches including futures and then deduct \$11.50 list for each single pole breaker omitted.

▲ **Last two digits** indicate approximate box height. For actual heights, see pages 2 and 3.

⓪ Changed since previous issue.

no. of poles	catalog number +⊙	list price	mains ampere rating	mains wire range	box height	approx. shipping weight
<b>lugs only in mains</b>						
12	NH1B12-4LX100	\$254	100	14-1/0	31 3/4	62
15	NH1B15-4LX100	301	100	14-1/0	40	62
18	NH1B18-4LX100	347	100	14-1/0	40	74
21	NH1B21-4LX100	394	100	14-1/0	48 1/4	74
24	NH1B24-4LX100	440	100	14-1/0	48 1/4	86
27	NH1B27-4LX100	487	100	14-1/0	56 1/2	86
30	NH1B30-4LX100	533	100	14-1/0	56 1/2	100

■ No Underwriters' label furnished when used in conjunction with trough extensions and pull boxes.

**3 wire SN, 120/240 volts**  
**and**  
**3 phase 4 wire SN**  
**120/208 volts**

**column type NA1B-4LX**

To price NA1B-LX panelboards, use price of standard NA1B-L panelboards and dimensions of type NH1B-LX panelboards. Number of branch circuits limited to 30 poles maximum except that when trough extensions are used and Underwriters' labels must be supplied, footnotes and other general information applying to other types of column type panelboards must be adhered to.

**main breakers—price addition:** Add the following list prices to catalog "Main Lugs Only" prices.

	50 amperes	100 amperes	200 amperes
Type NH1B (F frame)	\$77	\$94	not available
Type NA1B (E frame)	44	64	not available

### information common to column-type panelboards

**Column type panelboards** as listed may be installed as a conventional panelboard under the National Electrical Code. To take full advantage of the features of this type of panelboard, the use of extension troughs and pullboxes is recommended rather than use of conduit.

When the extension troughs are used, Sec. 3624 of the 1953 National Electrical Code, reading as follows, should be observed:

"3624. Number of Conductors. Wireways shall not contain more than 30 conductors at any cross section, unless the conductors are for signalling circuits or are control conductors between a motor and its starter and used only for starting duty. The sum of the cross-sectional areas of all contained conductors at any cross section of a wireway shall not exceed 20 per cent of the interior cross-sectional area of the wireway."

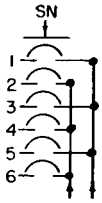
The correction factors specified in Note 4 of Table 1 of Chapter 10 are not applicable to the foregoing.



# lighting panelboards

**Q.S.**  
30-900  
page 9

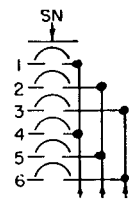
## Quicklag AB De-ion circuit breaker type



**3 wire SN**  
**120/240 volts**  
**a-c only**

**column types**  
**NLAB-3LX**  
**NLAB-3LXX**

boxes: 8 5/8" wide by 5" deep (LX)  
7 1/4" wide by 5" deep (LXX)



**3 phase**  
**4 wire SN**  
**120/208 volts**

**column types**  
**NLAB-4LX**  
**NLAB-4LXX**

boxes: 8 5/8" wide by 5" deep (LX)  
7 1/4" wide by 5" deep (LXX)

no. of poles	catalog number	list price	mains ampere rating	mains wire range	box height	approx. shipping weight
--------------	----------------	------------	---------------------	------------------	------------	-------------------------

### lugs only in mains

12	NLAB12-3LX100	\$130	100	14-1/0	29	58
14	NLAB14-3LX100	142	100	14-1/0	35	65
16	NLAB16-3LX100	154	100	14-1/0	35	66
18	NLAB18-3LX100	166	100	14-1/0	35	67
20	NLAB20-3LX100	178	100	14-1/0	41	71
22	NLAB22-3LX200	194	200	6-250	41	72
24	NLAB24-3LX200	206	200	6-250	41	73
26	NLAB26-3LX200	218	200	6-250	47	78
28	NLAB28-3LX200	230	200	6-250	47	79
30	NLAB30-3LX200	242	200	6-250	47	80
32	NLAB32-3LX200	254	200	6-250	53	87
34	NLAB34-3LX200	266	200	6-250	53	88
36	NLAB36-3LX200	278	200	6-250	53	89
38	NLAB38-3LX200	290	200	6-250	59	94
40	NLAB40-3LX200	302	200	6-250	59	95
42	NLAB42-3LX225	314	225	6-250	59	96

no. of poles	catalog number	list price	mains ampere rating	mains wire range	box height	approx. shipping weight
--------------	----------------	------------	---------------------	------------------	------------	-------------------------

### lugs only in mains

12	NLAB12-4LX100	\$140	100	14-1/0	29	59
14	NLAB14-4LX100	152	100	14-1/0	35	66
16	NLAB16-4LX100	164	100	14-1/0	35	67
18	NLAB18-4LX100	176	100	14-1/0	35	68
20	NLAB20-4LX100	188	100	14-1/0	41	72
22	NLAB22-4LX100	200	100	14-1/0	41	73
24	NLAB24-4LX100	212	100	14-1/0	41	74
26	NLAB26-4LX100	224	100	14-1/0	47	79
28	NLAB28-4LX100	236	100	14-1/0	47	80
30	NLAB30-4LX100	248	100	14-1/0	47	81
32	NLAB32-4LX200	260	200	6-250	53	88
34	NLAB34-4LX200	272	200	6-250	53	89
36	NLAB36-4LX200	284	200	6-250	53	90
38	NLAB38-4LX200	296	200	6-250	59	95
40	NLAB40-4LX200	308	200	6-250	59	96
42	NLAB42-4LX200	320	200	6-250	59	97

◆ **Single pole, 15 ampere breakers** in branches are standard and will be furnished unless otherwise specified. 20, 30, 40 or 50-ampere breakers, if specified, will be furnished at same price. Add for increased mains if necessary from page 2.

**space only or provision for future breakers:** Figure the panelboard on the basis of the total number of branches including futures and deduct—\$3.40 list for each breaker omitted.

■ No Underwriters' label furnished when used in conjunction with trough extensions and pull boxes.

**handle extensions:** For each pair of single pole breakers equipped with handle extensions to provide double pole

manual operation, add \$0.50 list. Two pole common trip not available.

**main breakers:** Add the following list prices to catalog "main lugs only" prices:

	E frame 50 amperes	E frame 100 amperes	200 amperes
NLAB-3LX	\$30	\$49	not available
NLAB-4LX	44	64	not available

◆ Catalog numbers are for 8 5/8" O.D. wide boxes. For 7 1/4" O.D. wide boxes use same list price and add "X" to catalog number. Example NLAB18-4LXX-100.

## information common to column-type panelboards—continued

**neutral bars:** When column type panels with trough extension and pull box are furnished, the neutral bar will be placed in the pull box and not on the panel proper. When troughs or pull boxes are not furnished, neutral bar will be located on the panel at the top unless otherwise specified.

**trough extension list price:** Make following price addition for trough extending from top of panelboard to ceiling. Width and depth same as panelboard. Removable front.

length	list price	length	list price
36"	\$31	86"	\$44
46"	34	96"	48
56"	35	106"	52
66"	39	116"	56
76"	41	126"	63

**pull box** . . . . . list price \$26.00

Standard dimensions are 12" high, 16" wide, 5 1/2" deep.

For 6 inch deep box . . . add 5% to list price

September 19, 1955

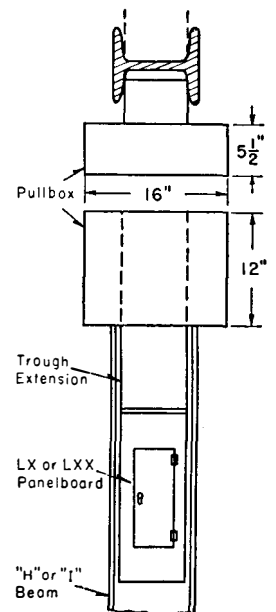
supersedes Quick Selector section 30-900, pages 9-10, dated March 15, 1955  
mailed to: E/254/PL; D63-1E; C26-1C; DAK

Pull box will be furnished without knockouts unless drilling template accompanies order.

Column type panelboards are narrow single row construction primarily for "H" or "I" beam mounting. Inside beam dimensions should be checked closely against those of standard boxes to determine if standard boxes can be mounted as desired. If not, order must state actual overall permissible outside width of box.

### approximate dimensions—inches

description	NLAB-LX	NLAB-LX	NLAB-LXX
	NH1B-LX		
box width (O.D.)	8 5/8"	8 5/8"	7 1/4"
box depth (O.D.)	5"	5"	5"
bottom gutter	4"	4"	4"
top gutter	4"	4"	4"
side gutter	1 1/2"	3 1/8"	1 3/8"



prices are effective September 19, 1955 and subject to change without notice  
discount symbol G selling policy 30-000



## type ABH

**note:** Type ABH panel cancelled.

For panels having combinations of one, two and/or three pole E frame breaker branches with mains not over 225 amperes, use type NA1B if not more than two 70-100 ampere branches are required. If mains are in excess of 225 amperes and more than two 70-100 ampere branch breakers are required, use type NDP.

### type NDP subfeed lugs, through feed lugs, and split bus

#### subfeed breaker list prices †

225 ampere 2-pole J frame .....	\$202
225 ampere 3-pole J frame .....	256

† only one subfeed breaker per panel

#### subfeed lugs

ampere rating	wire range	list price	
		2 hot bus bars	3 hot bus bars
225 amp and below .....	6-300	\$10	\$15
400 amp .....	300-500	30	37

#### split bus or meter loop

ampere main bus	list price addition	
	2 hot bus bars	3 hot bus bars
225 amps and below .....	\$24	\$34
400 amps .....	51	60
600 amps .....	60	67

### type NDP layout and pricing example

top gutter	4"	
neutral bar	2 3/4"	1-225-A. Neutral Bar..... \$ 23.00
filler	1 3/8"	
20-amp 1-pole	20-amp 1-pole	1 3/8" 2-20-A. 1-pole..... 23.00
2-pole space	2-pole space	2 3/4" 2-50-A. 2-pole spaces. 10.00
40-amp 2-pole	50-amp 2-pole	2 3/4" 1-40-A. 2-pole with 1-50-A. 2-pole..... 53.00
40-amp 3-pole	40-amp 3-pole	4 1/8" 2-40-A. 3-pole..... 78.00
50-amp 3-pole	100-amp 3-pole	4 1/8" { 1-50-A, 3-pole..... 39.00 1-100A, 3-pole..... 58.00
225-amp main lugs	2 3/4"	Base price 225-A. lugs in main..... 62.00
bottom gutter	4"	Total list price of panelboard..... \$346.00
<b>total</b>	30"	{ Cabinet size—30" H., 20" W. 6 1/2" D. (Style 1648506)





# distribution panelboards

## 15-600 ampere branches AB De-ion circuit breaker type

**convertible  
type CDP**

**voltage:** up to 600 volts a-c, 250 volts d-c

**mains capacity:** up to 1200 amperes, main lugs only  
up to 600 amperes, main breaker

### base list prices use once per panel

Base price is determined by largest breaker trip and by largest lug required in breaker.

maximum breaker frame in panel	capacity of mains (amperes)				
	225	400	600	800	1000
J frame, K frame, KL frame	\$80	\$100	\$130	\$160	\$220
L frame with single cable terminals	..	130	160	193	253
L frame with two cable terminals	..	151	193	253	321

1200 ampere mains will be supplied in place of 1000 ampere mains at no price increase when specifically called for in order write-up.

Includes top and bottom gutters, with respective sections of bus, and front to circuit edge. Remaining equipment for complete panelboard included in Branch Circuit prices and Neutral Bar prices (if required).

### branch circuit list prices

for panelboard with main breaker, price main breaker as a branch breaker after using proper base price

240 volts a-c, 125/250 volts d-c					600 volts a-c, 250 volts d-c					
trip rating and type of breaker	no. poles	list prices			trip rating and type of breaker	no. poles	list prices			
		branch breaker	space only	provision for future breaker ◆			branch breaker	space only	provision for future breaker ◆	
15-20-30-40 or 50 E frame ©	1	\$ 18	\$ 5	\$ 7	15 or 20 E frame ©♣	1	\$ 19	\$ 5	\$ 9	
	2	36	6	10		15-20-30-40 or 50 F frame ©	2	66	6	10
	3	52	8	14			3	85	8	14
70-90 or 100 E frame ©	2	53	6	10	70-90 or 100 F frame ©	2	80	6	10	
	3	70	8	14		3	100	8	14	
50-70-90 or 100 G frame ▲	2	110	12	22	50-70-90 or 100 G frame ▲	2	110	12	22	
	3	148	17	33		3	148	17	33	
125-150-175-200 or 225 J frame ©	2	202	12	26	125-150-175-200 or 225 J frame ©	2	202	12	26	
	3	256	17	39		3	256	17	39	
125-150-175-200 or 225 K frame ▲	2	228	22	36	125-150-175-200 or 225 K frame ▲	2	228	22	36	
	3	294	34	55		3	294	34	55	
250-300-350 or 400 KL frame ▲	2	425	34	45	250-300-350 or 400 KL frame ▲	2	425	34	45	
	3	541	34	66		3	541	34	66	
250-275-300-325-350-400-450-500-550 or 600 L frame ▲	2	524	34	60	250-275-300-325-350-400-450-500-550 or 600 L frame ▲	2	524	34	60	
	3	677	34	88		3	677	34	88	

- © non-interchangeable trip
- ♣ special 1-pole 277 volt E frame breaker for 277/480, 3 phase, 4-wire solid neutral system
- ▲ interchangeable trip
- ◆ includes connectors and mounting brackets

note: For panel with main breaker, price main breaker as branch breaker after using proper base price.

### solid neutral bar list prices

225 amps	400 amps	600 amps	800 amps	1000 amps
\$23	\$30	\$43	\$60	\$71

### split bus or meter loop

ampere main bus	list price addition	
	2 hot bus bars	3 hot bus bars
225 amps and below	\$43	\$51
400 amps	51	60
600 amps	60	67

### subfeed lugs list prices

main amperes	two hot bus bars	three hot bus bars	solid neutral bus
225	\$17	\$22	\$ 7
400	34	40	13
600	60	67	22

### two-section panels—interconnection panel busses

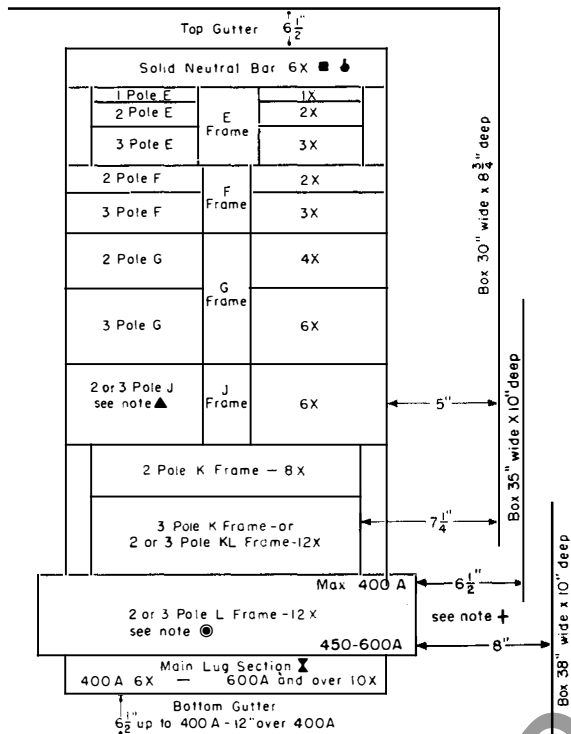
Panelboards requiring more than 96X should be ordered and priced as two panels mounted in one box adding for subfeed lugs of proper capacity (not over 600 amperes) in one panel to feed the second panel. When desired, the two panels may be furnished with insulated bus bar connections, pricing such interconnections from table below. Lugs for incoming feeders on such two-section panels will be located in one panel proper and not on the tie bus. Dimensions on request.

ampere rating of inter-bus	list prices		
	to hot busses	three hot busses	solid neutral bus
400	\$75	\$108	\$36
600	82	117	39

# distribution panelboards

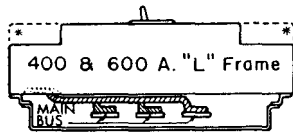
## 15-600 ampere branches AB De-ion circuit breaker type

### type CDP panel layout and box dimensions



**note z**—Omit main lug section when figuring dimensions of panelboard having main breaker

**note c**—"L" frame breakers



Two covers are used for the "L" frame breaker. Heavy outline shows shape of cover used when only 400 ampere trip with one 500 MCM lug per leg is used. Dotted line extensions show shape of cover which will be used on any L frame breaker whose trip rating exceeds 400 amperes or on any L frame breaker regardless of trip rating when 2-350 MCM or 2-500 MCM lugs per leg are required.

### terminal wire range

capacity and type	wire range
225 amp main lugs only	1-6 to 250 mcm per leg
400 amp main lugs only	1-300 to 500 mcm per leg
600 amp main lugs only	2-300 to 500 mcm per leg
800 amp main lugs only	2-300 to 500 mcm per leg
1000 amp main lugs only	3-300 to 500 mcm per leg
1200 amp main lugs only	3-300 to 500 mcm per leg
E frame branch or main breaker	1-14 to 1/0 per leg
F frame branch or main breaker	1-14 to 1/0 per leg
G frame branch or main breaker	1-14 to 1/0 per leg
J frame branch or main breaker	1-6 to 350 mcm per leg
K frame branch or main breaker	1-6 to 250 mcm per leg (125-200 amp trip ratings) 1-4 to 350 mcm per leg (225 amp trip ratings)
KL frame branch or main breaker	1-1/0 to 600 mcm per leg (125-350 amp trip ratings) 2-3/0 to 250 mcm per leg (400 amp trip ratings)
L frame branch or main breaker	1-1/0 to 600 mcm per leg (125-350 amp trip ratings) 2-2/0 to 350 mcm per leg (400-500 amp trip ratings) 2-300 to 500 mcm per leg (550-600 amp trip ratings)

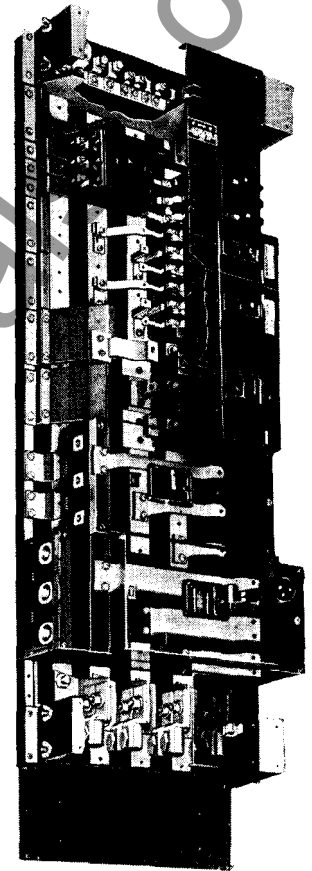
**note m**—When panel has main breaker, neutral bar is located where main lugs are usually located and takes same X area as would have been required for main lug section of same capacity as main breaker.

**note n**—When branch circuits rated 401 to 600 amperes require a neutral lug, the 6X dimension must be changed to 10X.

**note t**—For panel having L frame main or branch breaker rated at 401 to 600 amperes, 6 1/2" gutter space becomes 8" and overall box width becomes 38" instead of 35".

**note a**—E, F or G frame breakers cannot be located opposite J frame breakers in determining panelboard dimensions. When an odd number of J frame breakers is required, the space opposite the odd breaker must be left blank.

Unless drilling template or other specified instructions accompany order, boxes will be furnished without knockouts. Specify whether flush or surface mounting.



### to determine box dimensions

To determine box dimensions, lay out panel using X units indicated below. Having determined the total number of X units, refer to accompanying table. If total X units exceed 96, price as two or more single panelboards, adding subfeed lugs to all but one panel.

box width and depth depend on largest breaker (main or branch)

total "X" panel space	height panel only inches	box height, inches	
		mains 400 amps and below	mains above 400 amps
24X	16 1/2	29 1/2	35
25X to 32X	22	35	40 1/2
33X to 40X	27 1/2	40 1/2	46
41X to 48X	33	46	51 1/2
49X to 56X	38 1/2	51 1/2	57
57X to 64X	44	57	62 1/2
65X to 72X	49 1/2	62 1/2	68
73X to 80X	55	68	73 1/2
81X to 88X	60 1/2	73 1/2	79
89X to 96X	66	79	84 1/2

largest breaker in the panel	box width (inches)	box depth (inches)
for E, F, G, J, K or KL, 2 or 3 pole breakers	30	8 3/4
for L frame 2 and 3-pole breakers 400 ampere maximum trip with or without E, F, G, J, K or KL frame	35	10
for L frame 2 and 3-pole breakers 450-600 ampere trip with or without E, F, G, J, K or KL frame	38	10

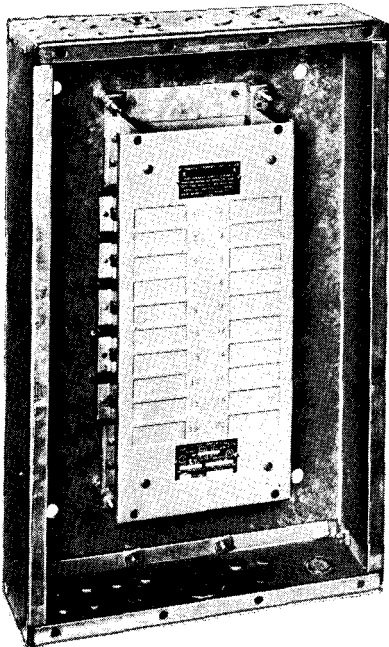
September 19, 1955

supersedes Quick Selector section 30-900, pages 13-14, dated March 15, 1955  
mailed to: E/254/PL; D63-1E; C26-1C; DAK

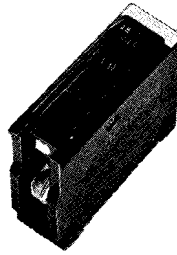
prices are effective September 19, 1955 and subject to change without notice  
discount symbol G selling policy 30-000



# ADD-A-CIRKIT panels



box and interior



Type PL or Quicklag P branch circuit breaker units



front with door

For convenience in stocking, handling and installation, **ADD-A-CIRKIT** panels are packaged as 3 separate units as follows:

- box and interior (less breakers)
- unit breakers (see page 15)
- front with door

Order each unit by separate catalog number.

max. no. of ckt.	mains		box and interior less branch breakers			front with door		list price	approx. weight	box dimensions		
	ampere rating	wire range	cat. no.	list price	approx. weight	catalog no.	flush			surface	H	W

**single phase, 3-wire, 120/240 volt main lugs only**

12	100	14-1/0	PQ123L	\$ 48	29	T211F	T201S	\$22	14	20"	15"	4 5/8"
20	100	14-1/0	PQ203L	60	33	T212F	T202S	24	16	24"	15"	4 5/8"
30	210	0-4/0	PQ303L	73	41	T214F	T204S	29	20	30"	15"	4 5/8"
40	210	0-4/0	PQ403L	85	47	T215F	T205S	31	23	34"	15"	4 5/8"

**single phase, 3-wire, 120/240 volt 2-pole main breaker**

10	50	12-4	PQ103B	70	35	T213F	T203S	27	17	26"	15"	4 5/8"
12	70	6-1	PQ123BX	92	35	T213F	T203S	27	17	26"	15"	4 5/8"
20	100	6-1	PQ203B	104	40	T214F	T204S	29	20	30"	15"	4 5/8"
30	210	6-350	PQ303B	254	95	T217F	T207S	38	28	42"	17"	5 3/4"
40	210	6-350	PQ403B	265	105	T218F	T208S	41	31	46"	17"	5 3/4"

**three phase, 4-wire, 120/208 volt main lugs only**

12	100	14-1/0	PQ124L	58	29	T211F	T201S	22	14	20"	15"	4 5/8"
20	100	14-1/0	PQ204L	70	33	T212F	T202S	24	16	24"	15"	4 5/8"
30	100	14-1/0	PQ304L	80	41	T214F	T204S	28	20	30"	15"	4 5/8"
40	210	0-4/0	PQ404L	97	48	T215F	T205S	31	23	34"	15"	4 5/8"

**three phase, 4-wire, 120/208 volt 3-pole main breaker**

12	50	12-4	PQ124B	97	37	T213F	T203S	27	17	26"	15"	4 5/8"
20	100	6-1	PQ204B	129	41	T214F	T204S	29	20	30"	15"	4 5/8"
30	100	6-1	PQ304B	139	48	T216F	T206S	33	24	36"	15"	4 5/8"
40	210	6-350	PQ404B	320	106	T218F	T208S	41	31	46"	17"	5 3/4"

**ADD-A-CIRKIT** panels will be furnished only as listed. For lighting panels using Type PL or Quicklag P circuit breakers and requiring modifications such as increased main bus capacity, subfeeds, increased gutter space, increased gauge, refer to NPLB and NPLAB panelboard listings, pages 4 and 5.

Panels are furnished with main lugs or main breakers located at the bottom. Main lug panels are designed so that the panel interior base unit can be reversed to provide main lugs at top.

Underwriters' listed—As enclosed panel-base assemblies under File E-24861. All panel-base assemblies having main breakers are suitable for use as service equipment. Catalog Nos. PQ123L and PQ124L are also suitable for use as service equipment when there are not more than six service sub-divisions, per paragraph 2351 NEC.

order each unit by separate catalog number

prices are effective September 19, 1955 and subject to change without notice  
discount symbol K selling policy 30-000

**note:** These prices are for estimating purposes only.

**type PL circuit breaker list prices**

single pole, 120 volts a-c only

ampere rating	style number	list price $\Delta$
15	36A4645G18	\$2.40
20	36A4645G19	2.40
30	36A4645G20	2.40
40	36A4645G21	2.40
50	36A4645G22	2.40

**Quicklag P circuit breaker list prices**

ampere rating	style number	list price $\Delta$
1 pole, 120 volts a-c only		
15	1614 757	\$3.20
20	1614 758	3.20
30	1614 760	3.20
40	1614 762	3.20
50	1614 763	3.20

2 pole common trip, 120/240 volts a-c only

15	46A8440G5	6.60
20	46A8440G6	6.60
30	46A8440G8	6.60
40	46A8440G10	6.60
50	46A8440G11	6.60

**type PL and Quicklag P accessories**

Handle tie style number 1720 375  
list price each.....\$0.20  
Handle lock "OFF" or "ON"—  
style number 1720 814  
list price each.....\$0.60  
Approximate shipping weight per breaker—6 oz.

The following table is published for convenience in arriving at total price for various quantities of single pole breakers at approximate list prices each as indicated.

no. of brkrs.	list price type PL @ \$2.40 each	list price Quicklag P @ \$3.20 each	no. of brkrs.	list price type PL @ \$2.40 each	list price Quicklag P @ \$3.20 each
2	\$ 4.80	\$ 6.40	22	\$52.80	\$ 70.40
3	7.20	9.60	23	55.20	73.60
4	9.60	12.80	24	57.60	76.80
5	12.00	16.00	25	60.00	80.00
6	14.40	19.20	26	62.40	83.20
7	16.80	22.40	27	64.80	86.40
8	19.20	25.60	28	67.20	89.60
9	21.60	28.80	29	69.60	92.80
10	24.00	32.00	30	72.00	96.00
11	26.40	35.20	31	74.40	99.20
12	28.80	38.40	32	76.80	102.40
13	31.20	41.60	33	79.20	105.60
14	33.60	44.80	34	81.60	108.80
15	36.00	48.00	35	84.00	112.00
16	38.40	51.20	36	86.40	115.20
17	40.80	54.40	37	88.80	118.40
18	43.20	57.60	38	91.20	121.60
19	45.60	60.80	39	93.60	124.80
20	48.00	64.00	40	96.00	128.00
21	50.40	67.20			

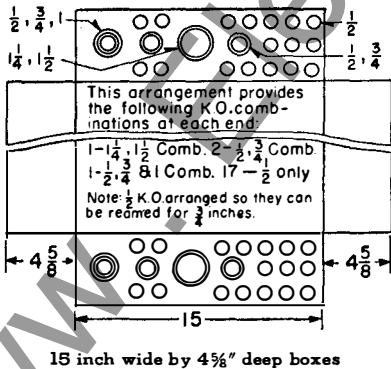
$\Delta$  for current circuit breaker prices and discounts refer to selling policy 29-000 and price list 29-060

**example:**

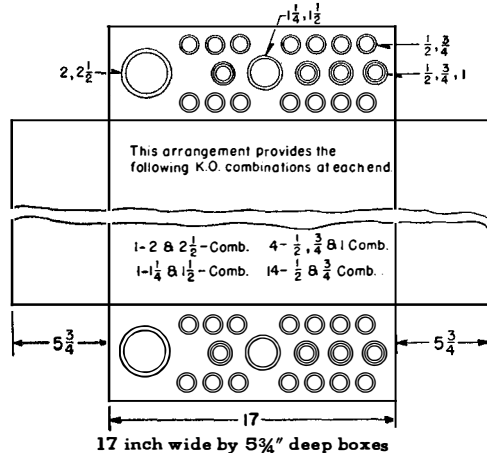
always order and price each unit as separate catalog number.

1—Box and Interior unit Cat. No. PQ303L.....	\$73.00
1—Flush Mtg. Trim Cat. No. T214F.....	29.00
<b>Total.....</b>	<b>\$102.00</b>
(subject to discount symbol K selling policy 30-000)	
6—15 amp. 1 Pole Breakers S# 36A4645G18.....	\$14.40
8—20 amp. 1 Pole Breakers S# 36A4645G19.....	19.20
2—sets of S# 1720 375 handle extension.....	.40
<b>Total.....</b>	<b>\$34.00</b>
(subject to discount selling policy 29-000)	

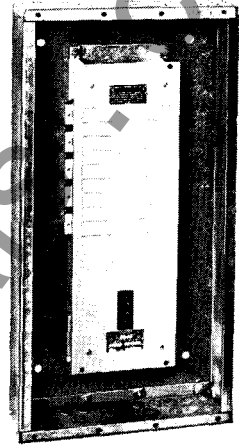
**standard knockout arrangement**



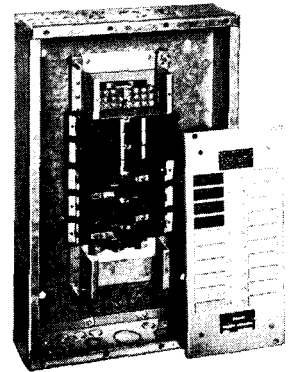
15 inch wide by 4 5/8" deep boxes



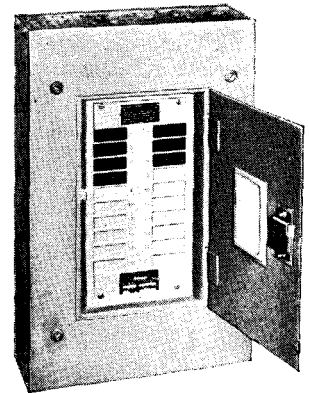
17 inch wide by 5 3/4" deep boxes



box and interior with 100 ampere main breaker



20 circuit panel with main lugs



panel with partial complement of breakers installed

September 19, 1955

supersedes Quick Selector section 30-900, pages 15-16, dated March 15, 1955  
mailed to: E/254/PL; D63-1E; C26-1C; DAK

prices are effective September 19, 1955 and subject to change without notice  
discount circuit breakers selling policy 29-000



# panelboards with cabinets

## panelboard modifications<sup>▲</sup>

**important: type NPLB and NPLAB panelboards**—Due to their compactness, the number and type of modifications which can be applied to type NPLB and NPLAB panelboards are

limited. Only items marked with † symbol can be applied on type NPLB and NPLAB. Only items marked with ⊙ symbol can be applied on type NLAB-LX or LXX.

### panel interior modifications

#### subfeed circuit breakers, lighting panelboards only

† Only one per panelboard unless otherwise indicated

amperes	frame	wire range	2 pole	3 pole
15-50	E	12-4	\$ 30	\$ 44
70-100	E	6-1	49	64
125-200 (225)	J	6-350	202	256

#### † subfeed lugs—lighting panelboards only

amperes	wire range	type NPLAB	other types
		2 or 3-pole	2 or 3-pole
50-100	14-1/0	\$10	\$10
200 (225)	6-250		10
200 (225)	1/0-4/0	10	10

#### †⊙ split-bus or meter loop for lighting panelboards

amperes main bus	price addition	
	2 hot busbars	3 hot busbars
200 (225) and below	\$26	\$36

#### breaker handle lock-off device

for type PL, Quicklag and E frame breakers..... \$ .75

#### remote control switches in lighting panels

price includes complete installation except pushbutton controls

ampere capacity	mechanically held †		electrically held †	
	2 pole	3 pole	2 pole	3 pole
30	\$224	\$259	\$178	\$196
60	268	315	237	267
75	315	351	not available	not available
100	351	396	286	336
150	515	579	469	562
200	609	699	508	623

† mechanically held switches are Automatic Switch Company, bulletin no. 920

† electrically held switches are Automatic Switch Company, bulletin no. 1035

**note:** Light duty mechanically held Automatic Switch Company bulletin no. 909 for 30 ampere non-inductive loads.  
2 pole—\$132      3 pole—\$160

#### †⊙ mountings

Mounting only of any standard wall-mounted wiring device (such as pilot light, tumbler switches) in front or box.

Device not included.

for first device..... \$16  
for each additional device..... 8

Drilling only to provide for mounting of instruments such as time clocks, add..... \$34

Device and mounting not included. If extra space is required, add for space as indicated above for increases over standard of end gutters, side gutters, and panelboard depth.

#### † main bus

800 amp per sq. in. density bus—lighting panelboards..... \$16  
800 amp per sq. in. density bus—distribution panelboards..... 41  
main lugs at top (instead of bottom)..... no charge  
omitting neutral bar on lighting panelboards..... no credit  
for two phase, 5 wire "lugs only in mains" on lighting panelboards use price of single phase 3 wire with same number of branches, and add..... \$25

#### † non-automatic circuit breaker

in mains only..... same price as automatic

### box, trim and door modifications

#### †⊙ special coatings

	maximum dimensions	
	20 x 60	35 x 84
special color paint <sup>■</sup> ..... box or front.....	\$ 50	\$ 50
special color paint <sup>■</sup> ..... box and front.....	50	50
cadmium plating..... box or front.....	34	75
cadmium plating..... box and front.....	59	118
hot-dipped galvanized..... box or front.....	85	169
hot-dipped galvanized..... box and front.....	126	220

■ Standard colors are: aluminum, black, brown, crystallac, gray, green or prime coat only..... no charge

#### † special cabinet construction

	weather-proof		dust-resisting
	single door	door-back-of door	(gaskets for door & front)
boxes 20" wide or less	\$ 94	\$126	\$50
boxes over 20" wide	126	190	67

#### †⊙ increased dimensions and gauge

end gutters—for each 12" increase or fraction thereof in length..... \$34  
side gutters—for each 7" increase or fraction thereof in box width..... 34  
panel box depth—increased to 8" maximum..... 34  
increased gauge over standard—maximum 10 gauge  
box or front..... 25  
box and front..... 34

#### † special front and doors

◆ galvanized sheet steel front (instead of plain steel front)..... \$50  
◆ door-in-door, one door over interior and one which exposes gutter..... 50  
◆ double or split doors, one above another or side by side..... 50  
special directory frame..... 5  
glass for directory frame..... no charge  
spring door hinges—bommer, brass, plain—per door..... 7  
vault handle and 3 point catch (when not standard)..... 25  
extra lock in inner door (of door-in door panel)..... 5  
special Corbin #2510; Yale #511, #511S lock..... 23  
special Corbin #2720; Yale #R274, #5105 lock..... 11  
master keying—only above specified locks—per lock..... 2

#### † special knockouts or drillings..... \$10

Except for knockouts furnished as standard for catalog listed lighting panelboards, knockouts will not be furnished unless template giving complete knockout information including location accompanies order.

#### † panelboard interiors and fronts to fit existing boxes

Westinghouse will furnish panelboards, without boxes to take care of old installations. No credit will be allowed from price of the complete panelboard for omitting the box. The price of the panel interior and special front of these jobs will be the price of the complete standard panelboard having the desired interior, providing the existing box is the same depth or deeper than our standard for the one being ordered. Special mounting brackets can be provided at \$20 extra for mounting interior when existing box is deeper than our standard.  
If the existing box is shallower than our standard, add \$43 to price of the complete standard panel for special built-up trim to provide necessary depth.

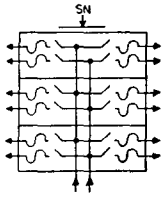
◆ On these items deduct 25% if individual order calls for duplicate cabinets with the same special feature applied, or if a quantity of 10 or more assorted panelboards is involved.  
▲ No modifications available on Add-A-Circuit panels.



# lighting panelboards

**Q.S.**  
**30-900**  
page 17

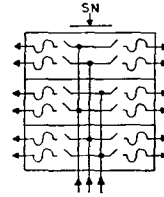
## 30 ampere tumbler switch, plug or NEC fuse type



**3 wire SN**  
**120/240 volts**  
**a-c or d-c**

**types**  
**NT1P-3**  
**NT1C-3**

**boxes:**  
20" wide by 5 3/4" deep, 4" wiring gutters



**3 phase**  
**4 wire SN**  
**120/208 volts**

**types**  
**NT1P-4**  
**NT1C-4**

**boxes:**  
20" wide by 5 3/4" deep, 4" wiring gutters

no. of poles	catalog number +	list price	mains ampere rating	mains wire range	cabinet reference number ▲	approx. shipping weight
--------------	------------------	------------	---------------------	------------------	----------------------------	-------------------------

### lugs only in mains

8	NT1P08-3L100	\$ 99	100	14-1/0	C 22	59
12	NT1P12-3L100	117	100	14-1/0	C 25	68
16	NT1P16-3L100	134	100	14-1/0	C 28	77
20	NT1P20-3L100	152	100	14-1/0	C 30	86
24	NT1P24-3L200	169	200	6-250	C 33	95
28	NT1P28-3L200	187	200	6-250	C 36	104
32	NT1P32-3L200	205	200	6-250	C 39	113
36	NT1P36-3L200	222	200	6-250	C 41	137
40	NT1P40-3L200	240	200	6-250	C 44	146

### 2 pole main overcurrent protection

8	NT1P08-3AB050	\$128	50	12-4	C 28	74
12	NT1P12-3F100	156	100	6-1	C 30	83
16	NT1P16-3F100	174	100	6-1	C 33	92
20	NT1P20-3F100	191	100	6-1	C 36	101
24	NT1P24-3F200	264	200	6-250	C 50	139
28	NT1P28-3F200	282	200	6-250	C 52	148
32	NT1P32-3F200	299	200	6-250	C 55	157
36	NT1P36-3F200	317	200	6-250	C 58	181
40	NT1P40-3F200	334	200	6-250	C 61	220

Where space only for future circuits is required, figure panelboard on the basis of the total number of branches, including spaces, and deduct **\$9.50** list for omitting four single pole (one unit) branches.

+ **Catalog numbers cover** panels with single pole 30A tumbler switch and plug fusible branches. Cartridge fusible branches are available at same price. Simply change "P" in catalog number to "C". Cartridge fusible panelboards with single door are not safety type.

**prices are for single door construction:** Add **\$32.00** to list price for door-in-door construction and add "D" to catalog number. Example: NT1P12-3LD100. For each "Fuse Only Branch" substituted for a "tumbler switch and fuse branch", deduct **\$2.00** list each.

no. of poles	catalog number +	list price	mains ampere rating	mains wire range	cabinet reference number ▲	approx. shipping weight
--------------	------------------	------------	---------------------	------------------	----------------------------	-------------------------

### lugs only in mains

8	NT1P08-4L100	\$110	100	14-1/0	C 22	60
12	NT1P12-4L100	128	100	14-1 0	C 25	69
16	NT1P16-4L100	145	100	14-1 0	C 28	78
20	NT1P20-4L100	163	100	14-1/0	C 30	87
24	NT1P24-4L100	180	100	14-1/0	C 33	96
28	NT1P28-4L100	198	100	14-1 0	C 36	105
32	NT1P32-4L200	216	200	6-250	C 39	114
36	NT1P36-4L200	233	200	6-250	C 41	139
40	NT1P40-4L200	257	200	6-250	C 44	148

### 3 pole main overcurrent protection

8	NT1P08-4AB050	\$145	50	12-4	C 28	75
12	NT1P12-4AB050	163	50	12-4	C 30	84
16	NT1P16-4F100	185	100	6-1	C 33	93
20	NT1P20-4F100	202	100	6-1	C 36	102
24	NT1P24-4F100	220	100	6-1	C 39	111
28	NT1P28-4F100	238	100	6-1	C 41	120
32	NT1P32-4F200	263	200	6-250	C 55	159
36	NT1P36-4F200	381	200	6-250	C 58	183
40	NT1P40-4F200	398	200	6-250	C 61	223

**main overcurrent protection:** Westinghouse reserves the right to furnish automatic circuit breakers in lieu of main fuse connections. 200-amp fusible mains will be furnished as a fusible brush switch with interlock door.

For increased main bus see table page 2.

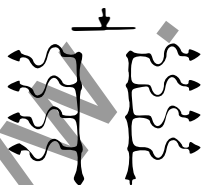
For panels having all two pole tumbler switch branch circuits or combinations of one or two pole, obtain price of panel having equivalent number of single pole branches and for each pair of double pole circuits substituted for four single pole circuits, deduct **\$3.20** list. On combination panels, the number of single pole circuits must be in multiples of 4 and the double pole circuits must be in multiples of 2.

Fuses not included.

▲ **Last two digits** indicate approximate box height. For actual heights, see pages 2 and 3.

## type NR3G

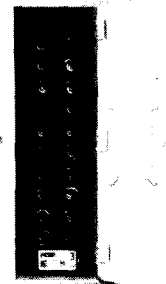
plug fuse only panelboards with three inch wiring gutters



**boxes 12" wide and 3 3/4" deep (I.D.)**

number of circuits	mains amps	catalog number	list price	box height (inches)
4	60	NR3G04	\$28	12 1/2
8	60	NR3G08	37	15 1/2
12	60	NR3G12	47	18 1/2
16	100	NR3G16	55	23
20	100	NR3G20	64	26

© front furnished with snap catch only  
fuses not included  
specify whether flush or surface mounting



September 19, 1955

supersedes Quick Selector section 30-900,  
pages 17-18, dated March 15, 1955  
mailed to: E/254/PL; D63-1E; C26-1C; DAK

prices are effective September 19, 1955 and subject to change without notice  
discount symbol G selling policy 30-000



# distribution panelboards

## 30-600 ampere branches fusible hinged unit type

**type CSF**

**voltage:** up to 600 volts a-c or d-c

**mains capacity:** up to 1200 amperes main lugs only  
up to 600 amperes main switch

**base list prices** use once per panel

maximum rating branch circuit	capacity of mains				
	200 amps	400 amps	600 amps	800 amps	1200 amps
200 amp and under	\$80	\$100	\$130	\$160	\$220
400 amp and under	..	130	160	193	253
600 amp and under	..	...	193	253	321

Base price includes main lugs (either single or three-phase), top and bottom gutter, with respective sections of bus, box and front to circuit edge. Remaining equipment for complete panelboard included in branch circuit and neutral bar prices (if required).

**branch circuit list prices** fuses not included

**main switches:** Figure same as a single branch circuit from circuit list price after adding proper base price considering main switch as largest branch circuit.

ampere capacity	number poles	125 or 250 volts a-c or d-c			600 volts a-c or d-c		
		type of unit	list price	space only	type of unit	list price	space only
30/30	2	double unit	\$ 46 ◆	\$15 ■	double unit	\$ 82 ◆	\$22 ■
30/30	3	double unit	60 ◆	15 ■	double unit	100 ◆	29 ■
60/60	2	double unit	56 ◆	22 ■	double unit	82 ◆	22 ■
60/60	3	double unit	76 ◆	29 ■	double unit	100 ◆	29 ■
100/100	2	double unit	84 ◆	22 ■	.....	..	..
100	2	.....	..	..	single unit	62	22
100/100	3	double unit	106 ◆	29 ■	.....	..	..
100	3	.....	..	..	single unit	80	34
200	2	single unit	104	29	single unit	140	34
200	3	single unit	145	43	single unit	186	50
400	2	single unit	228	43	single unit	310	43
400	3	single unit	330	65	single unit	420	65
600	2	single unit	355	56	single unit	405	56
600	3	single unit	466	84	single unit	510	84

◆ When two branches of a twin unit are of a different ampere rating, for example: a 30-60 twin unit, figure a 60-60 twin unit; or, when a 60-100 twin unit, figure a 100-100 twin unit.

■ Twin units cannot be furnished with a branch on one side and space only on the other side. For example: Should one 30 ampere branch be required, figure a 30-30 twin unit.

**solid neutral bar list prices**

225 amps	400 amps	600 amps	800 amps	1000 amps
\$23	\$30	\$43	\$56	\$71

**feed through lugs list prices**

main amperes	two hot bus bars	three hot bus bars
200	\$ 17	\$ 22
400	34	40
600	60	67
800	85	94
1200	102	111

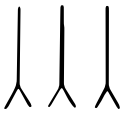
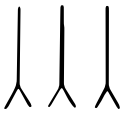
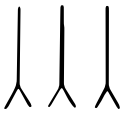
When panel requires two sets of lugs (one "Feed-in" and one "Feed-out"), figure as feed through lugs.

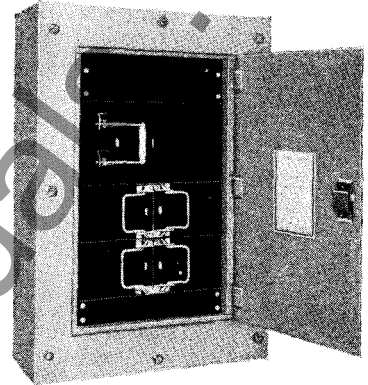
**split bus or meter loop list prices**

amperes	two hot bus bars	three hot bus bars
225 amp & below	\$ 43	\$ 51
400	51	60
600	60	67
800	85	94
1000	102	111

## fusible hinged unit type

### type CSF panel and box dimension data

Top Gutter		<b>top gutter</b>																										
		If No Neutral—	6"																									
		With Solid Neutral 400 amp or less	6"																									
		With Solid Neutral over 400 amp	12"																									
<table border="1" style="margin: auto;"> <tr><td style="text-align: center;">Y</td></tr> <tr><td style="text-align: center;">Solid Neutral Bar</td></tr> </table>		Y	Solid Neutral Bar	<b>solid neutral bar</b>																								
Y																												
Solid Neutral Bar																												
		200 amp or less	3"																									
		400, 600, 800, or 1200 amp	6"																									
Twin Units		<b>main or branch fuse units</b>																										
30A	30A																											
60A	60A																											
100A	100A																											
Single Unit																												
100A		<table border="1" style="width: 100%; text-align: center;"> <tr> <td></td> <td colspan="2">250 volt</td> <td colspan="2">575 volt</td> </tr> <tr> <td></td> <td>2-pole</td> <td>3-pole</td> <td>2-pole</td> <td>3-pole</td> </tr> <tr> <td>30-30</td> <td>3"</td> <td>3"</td> <td>4½"</td> <td>6"</td> </tr> <tr> <td>60-60</td> <td>4½"</td> <td>6"</td> <td>4½"</td> <td>6"</td> </tr> <tr> <td>100-100</td> <td>4½"</td> <td>6"</td> <td>none</td> <td>none</td> </tr> </table>			250 volt		575 volt			2-pole	3-pole	2-pole	3-pole	30-30	3"	3"	4½"	6"	60-60	4½"	6"	4½"	6"	100-100	4½"	6"	none	none
	250 volt		575 volt																									
	2-pole	3-pole	2-pole	3-pole																								
30-30	3"	3"	4½"	6"																								
60-60	4½"	6"	4½"	6"																								
100-100	4½"	6"	none	none																								
200A		100	none	none	6"	6"																						
400A		200	6"	9"	6"	9"																						
600A		400	15"	15"	15"	15"																						
<table border="1" style="margin: auto;"> <tr><td style="text-align: center;">Main Lug Section</td></tr> <tr><td style="text-align: center;">  </td></tr> </table>		Main Lug Section		<b>main lug sections</b>		600	15"	15"	15"	15"																		
Main Lug Section																												
																												
		200 amp or less			4½"																							
		400 amp			6"																							
		600 amp			9"																							
		800 amp			9"																							
		1200 amp			9"																							
		use whether panel has main lugs or main switch																										
Bottom Gutter		<b>bottom gutter</b>																										
		400 amp or less		6"																								
		600, 800, or 1200 amp		12"																								



combination switch and fuse panel

#### notes:

Units can be furnished with smaller fuse clips. Use dimensions (and price) of maximum rating of unit.

Cabinet height cannot exceed 94½". When circuit section would cause this limit to be exceeded, estimate as two or more single panels, adding sub-feed lugs to all but one panel.

Cabinet height cannot be less than 28½". Blank space sections are added to make the difference if circuit requirements do not require a 28½" high cabinet.

When two branches of a twin unit are of a different ampere rating, for example; a 30-60 twin unit, use a 60-60 twin unit; or, when a 100-30 twin unit is required, use a 100-100 twin unit.

Twin units below 100 amperes cannot be furnished with a branch on one side and space only on the other side. For example: Should one 30 ampere branch be required, use a 30-30 twin unit.

Side gutters for the 27" wide box are 5" each, and for the 31" wide box are 7" each.

**main switch units** When main switch units are required, a branch unit should be used, but dimensions should also include a regular main lug section of same capacity as main switch.

Unless drilling template or other specific instructions accompany order, boxes will be furnished without knockouts. Specify whether flush or surface mounting.

#### cabinet heights

27 inches wide by 10¾ inches deep will take units up to 200 amp maximum

height	height
28½"	64½"
34½"	70½"
40½"	76½"
46½"	82½"
52½"	88½"
58½"	94½"

31 inches wide by 13½ inches deep will take units up to 600 amp maximum

height	height
.....	64½"
.....	70½"
.....	76½"
46½"	82½"
52½"	88½"
58½"	94½"

quick  
selector  
section

**30-900**

page 20



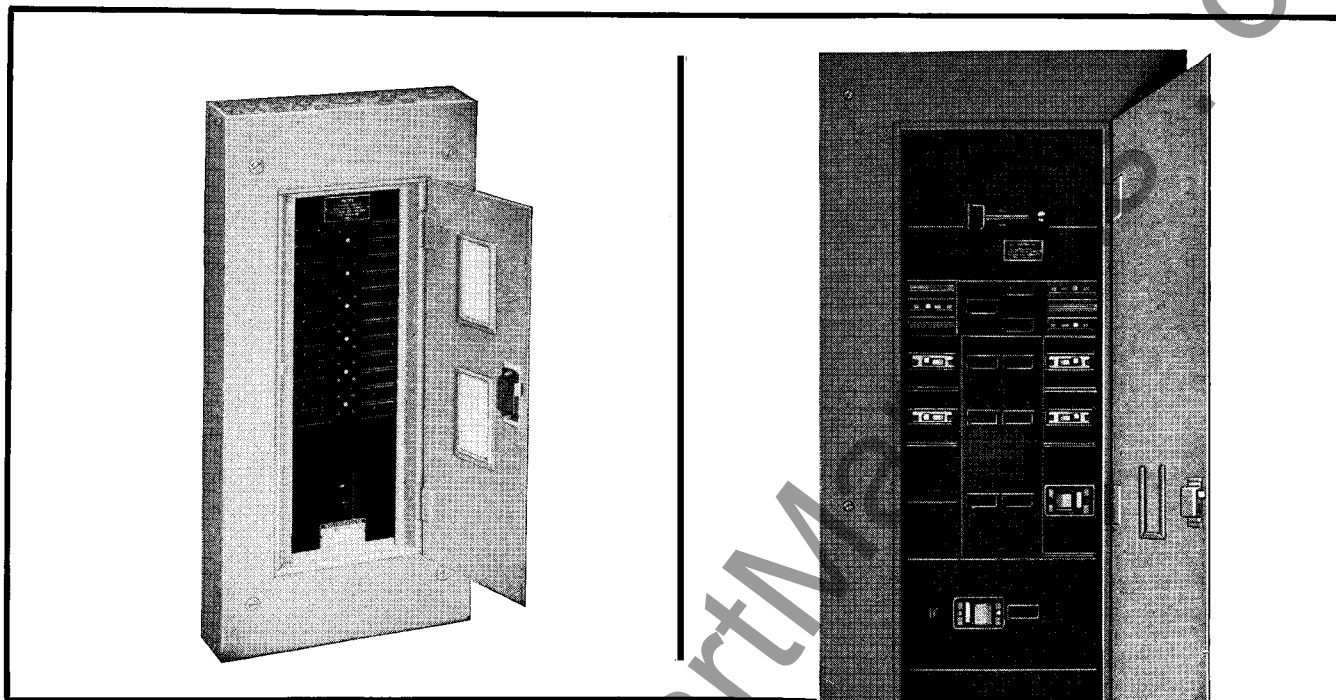
panelboards

www.ElectricalPartManuals.com

**Westinghouse Electric Corporation**  
**manufacturing & repair division, panelboard department, Hillside, N. J.**  
printed in U.S.A.



**lighting and distribution**



Westinghouse Nofuze panelboards including cabinets are available in various designs to meet the most exacting specifications for lighting and distribution applications. Prefabricated, tool-made parts insure uniformity and provide maximum flexibility to meet job requirements. Coordinated, standardized designs permit simplified interchange of parts without sacrificing performance.

**panelboard section index**

description	page
<b>lighting panelboards</b>	
type NTIP (switch and fuse).....	4
type NTIC (switch and fuse).....	4
type NR3G (plug fuse only).....	4
type NPLAB (Quicklag P, AB De-ion).....	5
type NLAB (Quicklag AB De-ion).....	6
type NA1B (E frame AB De-ion).....	7
type NH1B (E frame AB De-ion).....	8
<b>column type lighting panelboards</b>	
type NLAB-LX (Quicklag AB De-ion).....	9
type NH1B-LX (277 volts E frame AB De-ion).....	8
type NA1B-LX (120 volts E frame AB De-ion).....	8
<b>distribution panelboards</b>	
type NDP convertible AB De-ion.....	10-11
type CDP convertible AB De-ion.....	12-13
type CSF combination switch and fuse.....	14-15
<b>panelboard modifications</b> .....	16
<b>ADD-A-CIRKIT</b> panels.....	17-18

March 16, 1954

Supersedes Quick Selector Section 30-900, pages 1 to 20 dated March 15 1954  
Mailed to: E42-1H; D64-1E C26-1C



## • helpful information for circuit breaker panelboard selection

**if panelboard is for lighting circuits and . . .**

**select . . .**

if service voltage does not exceed 120 volts a-c to ground

type NPLAB (Quicklag AB De-ion, plug-in) page 5 or  
 type NLAB (Quicklag AB De-ion) page 6 or  
 type NA1B (E frame AB De-ion) page 7

if service voltage does not exceed 125/250 volts d-c

type NA1B (E frame AB De-ion) page 7

if the service voltage does not exceed 277/480 volts, 3 phase, 4 wire

type NH1B (E frame AB De-ion) page 8

if for column mounting ("H" or "I" beam)

type NLAB-LX (Quicklag AB De-ion) page 9  
 type NH1B-LX (E frame AB De-ion) page 8

**if panelboard is for distribution (or power) applications and . . .**

**select . . .**

if the service voltage does not exceed 240 volts a-c or 125/250 volts d-c . . . with branch circuits not in excess of 100 amperes (one circuit 225 amp, sub feed circuit is permitted)

type NDP convertible pages 10-11

if panelboard requirements exceed those not listed above

type CDP convertible pages 12-13

## • how to write panelboard orders

### example 1

item no.	quantity	description
1	1	type NLAB 24-4L 100 lighting panelboard consisting of:
1A	1	panel interior with 15 ampere branches
1B	1	box for above (Catalog No. _____)
1C	1	(flush) (surface) mounting trim for above

### example 2

item no.	quantity	description
1	1	type NDP convertible De-ion distribution panelboard consisting of:
1A	1	panel interior having 400 ampere, 3-phase, 4-wire, 120/208 volt SN, main lugs only and: 3—100 ampere, 3-pole branches 2— 50 ampere, 3-pole branches 6— 30 ampere, 3-pole branches 1—solid neutral bar
1B	1	box for above
1C	1	(flush) (surface) mounting trim for above

*always specify flush or surface mounting*

Main lugs or main breaker are always furnished at bottom of panel unless otherwise specified.

## • increased main bus capacity for lighting panelboards

Often, the standard capacities listed, which are based on 15 ampere breakers with 10 amperes average load, may not be sufficient in which case the main bus capacity (either main lugs or main breaker) should be increased from table below.

mains increased

**list price addition—**with or without neutral bar

from	to	main lugs only 2, 3 or 4 wire	main overcurrent protection				fusible mains	
			main breaker			2-pole	3-pole	
			2-pole	3-pole	3-pole			
50-amp	100-amp	\$10	\$ 29	\$ 30	\$ 28	\$23	\$ 33	
50-amp	200(225)-amp	13	153	179	149	77	108	
100-amp	200(225)-amp	13	137	162	135	67	88	

⊙ all lighting panelboards except NH1B

⊕ NH1B panelboards only

◆ applies only to type NTP panels

prices are effective March 15, 1954 and subject to change without notice

discount symbol G selling policy 30-900

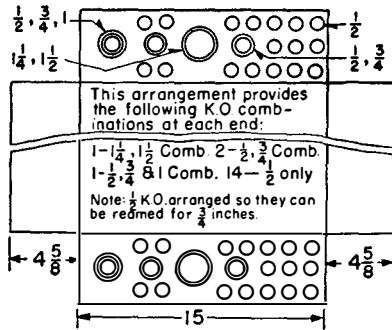
## boxes and trim list prices and cabinet information

**Boxes** will be made from code gauge galvanized steel.

**Trims** will be made from code gauge sheet steel finished with light gray lacquer applied over corrosion inhibiting priming.

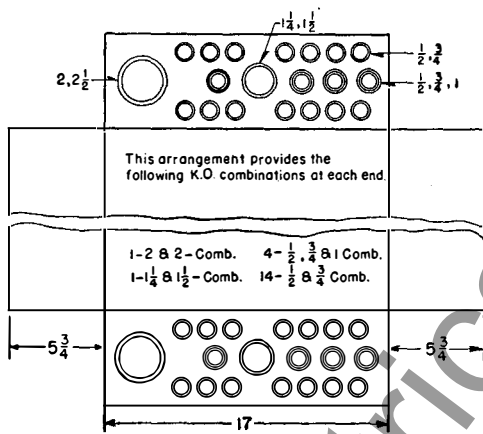
See tables below for standard knockout arrangements, prices, steel gauge, style numbers, dimensions and shipping weights.

### boxes: 15 inches wide by 4 7/8 inches deep (I.D.)



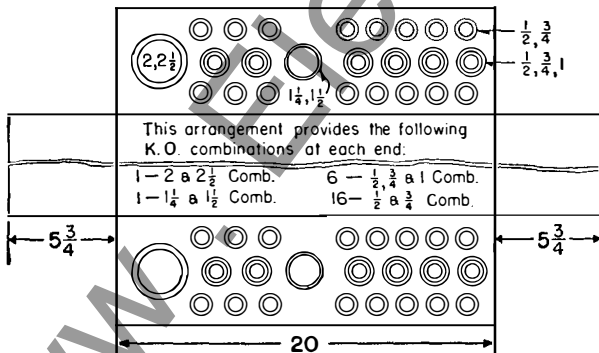
cabinet ref. no.	height inches	box				trim			
		style no.	list price	gauge	ship. wt.	style no.	list price	gauge	ship. wt.
P 20	20	1634 980	\$12	14	17	1648 432	\$20	12	14
P 24	24	1634 981	15	14	19	1648 433	22	12	16
P 28	28	1634 982	19	14	21	1648 434	24	12	19
P 32	32	1634 983	22	14	24	1648 435	26	12	21
P 36	36	1634 984	24	14	26	1648 436	28	12	24

### boxes: 17 inches wide by 5 3/4 inches deep (I.D.)



cabinet ref. no.	height inches	box				trim			
		style no.	list price	gauge	ship. wt.	style no.	list price	gauge	ship. wt.
PX 35	35	1634 991	\$24	14	30	1648 438	\$29	12	25
PX 39	39	1634 992	28	14	33	1648 439	32	12	27
PX 43	43	1634 993	32	12	49	1648 440	35	12	29
PX 47	47	1634 994	36	12	53	1648 441	38	12	32
PX 51	51	1634 995	40	12	57	1648 442	41	12	34

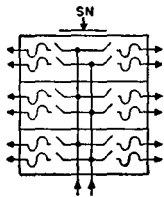
### boxes: 20 inches wide by 5 3/4 inches deep (I.D.)



cabinet ref. no.	height inches	box				trim			
		style no.	list price	gauge	ship. wt.	style no.	list price	gauge	ship. wt.
C 17	16 1/4	K-80001	\$13	14	20	K-80018	\$20	12	17
C 19	19	K-80002	14	14	22	K-80019	21	12	19
C 22	21 3/4	K-80003	16	14	24	K-80020	22	12	21
C 25	24 1/2	K-80004	17	14	26	K-80021	23	12	23
C 28	27 1/4	K-80005	19	14	28	K-80022	24	12	25
C 30	30	K-80006	20	14	30	K-80023	25	12	27
C 33	32 3/4	K-80007	23	14	32	K-80024	27	12	30
C 36	35 1/2	K-80008	25	14	34	K-80025	29	12	32
C 39	38 1/4	K-80009	28	14	36	K-80026	31	12	34
C 41	41	K-80010	30	12	53	K-80027	33	12	37
C 44	43 3/4	K-80011	33	12	56	K-80028	35	12	39
C 47	46 1/2	K-80012	35	12	59	K-80029	38	12	41
C 50	49 1/4	K-80013	38	12	61	K-80030	41	12	44
C 52	52	K-80014	41	12	64	K-80031	44	12	46
C 55	54 3/4	K-80015	44	12	67	K-80032	47	12	49
C 58	57 1/2	K-80016	47	12	70	K-80033	50	12	53
C 61	60 1/4	K-80017	50	10	93	K-80034	54	10	66



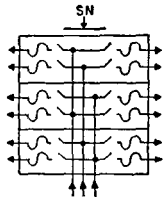
## 30 ampere tumbler switch, plug or NEC fuse type



**3 wire SN**  
**120/240 volt**  
**a-c or d-c**

**types**  
**NTIP-3**  
**NTIC-3**

**boxes:**  
20" wide by 5 3/4" deep, 4" wiring gutters



**3 phase**  
**4 wire SN**  
**120/208 volt**

**types**  
**NTIP-4**  
**NTIC-4**

**boxes:**  
20" wide by 5 3/4" deep, 4" wiring gutters

no. of poles	catalog number †	list price	mains ampere rating	mains wire range	cabinet reference number ▲	approx. shipping weight
<b>lugs only in mains</b>						
4	NTIP04-3L050	\$ 74	50	14-1/0	C 19	50
8	NTIP08-3L050	90	50	14-1/0	C 22	59
12	NTIP12-3L100	106	100	14-1/0	C 25	68
16	NTIP16-3L100	122	100	14-1/0	C 28	77
20	NTIP20-3L100	138	100	14-1/0	C 30	86
24	NTIP24-3L200	154	200	6-250	C 33	95
28	NTIP28-3L200	170	200	6-250	C 36	104
32	NTIP32-3L200	186	200	6-250	C 39	113
36	NTIP36-3L200	202	200	6-250	C 41	137
40	NTIP40-3L200	218	200	6-250	C 44	146

no. of poles	catalog number †	list price	mains ampere rating	mains wire range	cabinet reference number ▲	approx. shipping weight
<b>lugs only in mains</b>						
8	NTIP08-4L050	\$100	50	14-1/0	C 22	60
12	NTIP12-4L050	116	50	14-1/0	C 25	69
16	NTIP16-4L100	132	100	14-1/0	C 28	78
20	NTIP20-4L100	148	100	14-1/0	C 30	87
24	NTIP24-4L100	164	100	14-1/0	C 33	96
28	NTIP28-4L100	180	100	14-1/0	C 36	105
32	NTIP32-4L200	196	200	6-250	C 39	114
36	NTIP36-4L200	212	200	6-250	C 41	139
40	NTIP40-4L200	228	200	6-250	C 44	148

### 2 pole main overcurrent protection

no. of poles	catalog number †	list price	mains ampere rating	mains wire range	cabinet reference number ▲	approx. shipping weight
4	NTIP04-3AB050	90	50	12-4	C 25	65
8	NTIP08-3AB050	116	50	12-4	C 28	74
12	NTIP12-3F100	142	100	6-1	C 30	83
16	NTIP16-3F100	158	100	6-1	C 33	92
20	NTIP20-3F100	174	100	6-1	C 36	101
24	NTIP24-3F200	240	200	6-250	C 50	139
28	NTIP28-3F200	256	200	6-250	C 52	148
32	NTIP32-3F200	272	200	6-250	C 55	157
36	NTIP36-3F200	288	200	6-250	C 58	181
40	NTIP40-3F200	304	200	6-250	C 61	220

### 3 pole main overcurrent protection

no. of poles	catalog number †	list price	mains ampere rating	mains wire range	cabinet reference number ▲	approx. shipping weight
8	NTIP08-4AB050	132	50	12-4	C 28	75
12	NTIP12-4AB050	148	50	12-4	C 30	84
16	NTIP16-4F100	168	100	6-1	C 33	93
20	NTIP20-4F100	184	100	6-1	C 36	102
24	NTIP24-4F100	200	100	6-1	C 39	111
28	NTIP28-4F100	216	100	6-1	C 41	120
32	NTIP32-4F200	330	200	6-250	C 55	159
36	NTIP36-4F200	346	200	6-250	C 58	183
40	NTIP40-4F200	362	200	6-250	C 61	223

Where space only for future circuits is required, figure panelboard on the basis of the total number of branches, including spaces, and deduct \$9.50 list for omitting four single pole (one unit) branches.

† **Catalog numbers cover** panels with single pole 30A tumbler switch and plug fusible branches. Cartridge fusible branches are available at same price. Simply change "P" in catalog number to "C". Cartridge fusible panelboards with single door are not safety type.

**prices are for single door construction:** Add \$25.00 to list price for door-in-door construction and add "D" to catalog number. Example: NTIP12-3LD100. For each "Fuse Only Branch" substituted for a "tumbler switch and fuse branch", deduct \$2.00 list each.

**main overcurrent protection:** Westinghouse reserves the right to furnish automatic circuit breakers in lieu of main fuse connections. 200-amp fusible mains will be furnished as a fusible brush switch with interlock door.

For increased main bus see table page 2.

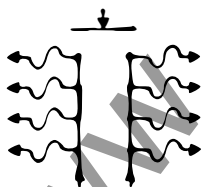
For panels having all two pole tumbler switch branch circuits or combinations of one or two pole, obtain price of panel having equivalent number of single pole branches and for each pair of double pole circuits substituted for four single pole circuits, deduct \$3.20 list. On combination panels, the number of single pole circuits must be in multiples of 4 and the double pole circuits must be in multiples of 2.

Fuses not included.

▲ **Last two digits** indicate approximate box height. For actual heights, see page 3.

### type NR3G

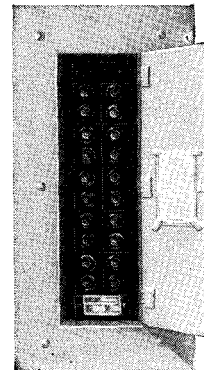
**plug fuse only panelboards with three inch wiring gutters**



**boxes 12" wide and 3 3/4" deep (I.D.)**

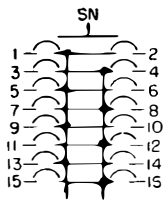
number of circuits	mains amps	catalog number	list price	box height
4	60	NR3G04	\$25	12 1/2
8	60	NR3G08	34	15 1/2
12	60	NR3G12	43	18 1/2
16	100	NR3G16	50	23
20	100	NR3G20	58	26

© front furnished with snap catch only  
fuses not included  
specify whether flush or surface mounting





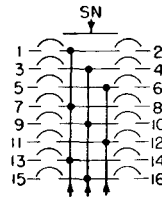
## Quicklag P—AB De-ion circuit breaker type



**3 wire SN**  
**120/240 volts**  
**a-c only**

type  
**NPLAB-3**

**boxes:**  
15" wide by 4 $\frac{5}{8}$ " deep, 4" wiring gutters  
◆ 17" wide by 5 $\frac{3}{4}$ " deep, 4" wiring gutters



**3 phase**  
**4 wire SN**  
**120/208 volts**

type  
**NPLAB-4**

**boxes:**  
15" wide by 4 $\frac{5}{8}$ " deep, 4" wiring gutters  
◆ 17" wide by 5 $\frac{3}{4}$ " deep, 4" wiring gutters

no. of poles	catalog number †	list price	mains ampere rating	mains wire range	cabinet reference number ▲	approx. shipping weight
<b>lugs only in mains</b>						
4	NPLAB04-3L100	\$ 76	100	14-1/0	P 20	41
6	NPLAB06-3L100	85	100	14-1/0	P 20	41
8	NPLAB08-3L100	94	100	14-1/0	P 20	41
10	NPLAB10-3L100	103	100	14-1/0	P 20	41
12	NPLAB12-3L100	112	100	14-1/0	P 20	41
14	NPLAB14-3L100	121	100	14-1/0	P 24	49
16	NPLAB16-3L100	130	100	14-1/0	P 24	49
18	NPLAB18-3L100	139	100	14-1/0	P 24	49
20	NPLAB20-3L100	148	100	14-1/0	P 24	49
22	NPLAB22-3L200	157	200	0-4/0	P 28	58
24	NPLAB24-3L200	166	200	0-4/0	P 28	58
26	NPLAB26-3L200	175	200	0-4/0	P 28	58
28	NPLAB28-3L200	184	200	0-4/0	P 28	58
30	NPLAB30-3L200	193	200	0-4/0	P 32	67
32	NPLAB32-3L200	202	200	0-4/0	P 32	67
34	NPLAB34-3L200	211	200	0-4/0	P 32	67
36	NPLAB36-3L200	220	200	0-4/0	P 32	67
38	NPLAB38-3L200	229	200	0-4/0	P 36	76
40	NPLAB40-3L200	238	200	0-4/0	P 36	76
42	NPLAB42-3L225	247	219	0-4/0	P 36	76

no. of poles	catalog number †	list price	mains ampere rating	mains wire range	cabinet reference number ▲	approx. shipping weight
<b>lugs only in mains</b>						
6	NPLAB06-4L100	\$ 95	100	14-1/0	P 20	42
8	NPLAB08-4L100	104	100	14-1/0	P 20	42
10	NPLAB10-4L100	113	100	14-1/0	P 20	42
12	NPLAB12-4L100	122	100	14-1/0	P 20	42
14	NPLAB14-4L100	131	100	14-1/0	P 24	50
16	NPLAB16-4L100	140	100	14-1/0	P 24	50
18	NPLAB18-4L100	149	100	14-1/0	P 24	50
20	NPLAB20-4L100	158	100	14-1/0	P 24	50
22	NPLAB22-4L100	167	100	14-1/0	P 28	59
24	NPLAB24-4L100	176	100	14-1/0	P 28	59
26	NPLAB26-4L100	185	100	14-1/0	P 28	59
28	NPLAB28-4L100	194	100	14-1/0	P 28	59
30	NPLAB30-4L100	203	100	14-1/0	P 32	68
32	NPLAB32-4L200	212	200	0-4/0	P 32	69
34	NPLAB34-4L200	221	200	0-4/0	P 32	69
36	NPLAB36-4L200	230	200	0-4/0	P 32	69
38	NPLAB38-4L200	239	200	0-4/0	P 36	78
40	NPLAB40-4L200	248	200	0-4/0	P 36	78
42	NPLAB42-4L200	257	200	0-4/0	P 36	78

### 2 pole main breaker

4	NPLAB04-3AB050	103	50	12-4	P 24	54
6	NPLAB06-3AB050	112	50	12-4	P 24	54
8	NPLAB08-3AB050	121	50	12-4	P 24	54
10	NPLAB10-3AB050	130	50	12-4	P 28	63
12	NPLAB12-3AB100	157	100	6-1	P 28	63
14	NPLAB14-3AB100	166	100	6-1	P 28	63
16	NPLAB16-3AB100	175	100	6-1	P 28	63
18	NPLAB18-3AB100	184	100	6-1	P 32	72
20	NPLAB20-3AB100	193	100	6-1	P 32	72
22	NPLAB22-3AB200	331	200	6-350	◆PX 39	104
24	NPLAB24-3AB200	340	200	6-350	◆PX 39	104
26	NPLAB26-3AB200	349	200	6-350	◆PX 43	123
28	NPLAB28-3AB200	358	200	6-350	◆PX 43	123
30	NPLAB30-3AB200	367	200	6-350	◆PX 43	123
32	NPLAB32-3AB200	376	200	6-350	◆PX 43	123
34	NPLAB34-3AB200	385	200	6-350	◆PX 47	132
36	NPLAB36-3AB200	394	200	6-350	◆PX 47	132
38	NPLAB38-3AB200	403	200	6-350	◆PX 47	132
40	NPLAB40-3AB200	412	200	6-350	◆PX 47	132
42	NPLAB42-3AB225	421	219	6-350	◆PX 51	141

### 3 pole main breaker

6	NPLAB06-4AB050	134	50	12-4	P 24	58
8	NPLAB08-4AB050	143	50	12-4	P 24	58
10	NPLAB10-4AB050	152	50	12-4	P 28	67
12	NPLAB12-4AB050	161	50	12-4	P 28	67
14	NPLAB14-4AB050	170	50	12-4	P 28	67
16	NPLAB16-4AB100	198	100	6-1	P 28	67
18	NPLAB18-4AB100	207	100	6-1	P 32	76
20	NPLAB20-4AB100	216	100	6-1	P 32	76
22	NPLAB22-4AB100	225	100	6-1	P 32	76
24	NPLAB24-4AB100	234	100	6-1	P 32	76
26	NPLAB26-4AB100	243	100	6-1	P 36	85
28	NPLAB28-4AB100	252	100	6-1	P 36	85
30	NPLAB30-4AB100	261	100	6-1	P 36	85
32	NPLAB32-4AB200	425	200	6-350	◆PX 43	127
34	NPLAB34-4AB200	434	200	6-350	◆PX 47	136
36	NPLAB36-4AB200	443	200	6-350	◆PX 47	136
38	NPLAB38-4AB200	452	200	6-350	◆PX 47	136
40	NPLAB40-4AB200	461	200	6-350	◆PX 47	136
42	NPLAB42-4AB200	470	200	6-350	◆PX 51	145

† **circuit breakers:** 15 ampere, single pole, 120 volt a-c branch breakers will be furnished unless otherwise specified. 20, 30, 40 and 50 ampere ratings can be supplied at the same price except increased main bus capacity may be required. See page 2 for price addition for increased mains capacity.

**space only or provision for future breakers:** Figure the panelboard on the basis of the total number of branches including futures and then deduct \$2.60 list for each single pole breaker omitted.

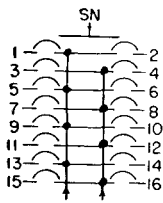
**two pole independent trip:** For each double pole (independent trip) circuit substituted for two single pole circuits, add \$.50 list to panel figured on basis of all single pole circuits.

▲ **Last two digits** indicate approximate box height. For actual heights, see page 3.

◆ 17 in. wide by 5 $\frac{3}{4}$  in. deep boxes.



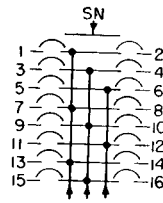
## Quicklag AB De-ion circuit breaker type



**3 wire SN**  
**120/240 volts**  
**a-c only**

**type**  
**NLAB-3**

**boxes:**  
20" wide by 5 3/4" deep, 4" wiring gutters



**3 phase**  
**4 wire SN**  
**120/208 volts**

**type**  
**NLAB-4**

**boxes:**  
20" wide by 5 3/4" deep, 4" wiring gutters

no. of poles	catalog number †	list price	mains ampere rating	mains wire range	cabinet reference number ▲	approx. shipping weight	no. of poles	catalog number †	list price	mains ampere rating	mains wire range	cabinet reference number ▲	approx. shipping weight
<b>lugs only in mains</b>													
4	NLAB04-3L050	\$ 76	50	14-6	C 17	46	6	NLAB06-4L050	\$ 95	50	14-6	C 19	55
6	NLAB06-3L050	85	50	14-6	C 19	54	8	NLAB08-4L050	104	50	14-6	C 19	55
8	NLAB08-3L050	94	50	14-6	C 19	54	10	NLAB10-4L050	113	50	14-6	C 22	63
10	NLAB10-3L050	103	50	14-6	C 22	62	12	NLAB12-4L050	122	50	14-6	C 22	63
12	NLAB12-3L100	112	100	14-1/0	C 22	62	14	NLAB14-4L050	131	50	14-6	C 22	65
14	NLAB14-3L100	121	100	14-1/0	C 22	64	16	NLAB16-4L100	140	100	14-1/0	C 22	65
16	NLAB16-3L100	130	100	14-1/0	C 22	64	18	NLAB18-4L100	149	100	14-1/0	C 25	73
18	NLAB18-3L100	139	100	14-1/0	C 25	72	20	NLAB20-4L100	158	100	14-1/0	C 25	73
20	NLAB20-3L100	148	100	14-1/0	C 25	72	22	NLAB22-4L100	167	100	14-1/0	C 28	84
22	NLAB22-3L200	157	200	6-250	C 28	83	24	NLAB24-4L100	176	100	14-1/0	C 28	84
24	NLAB24-3L200	166	200	6-250	C 30	83	26	NLAB26-4L100	185	100	14-1/0	C 30	92
26	NLAB26-3L200	175	200	6-250	C 30	91	28	NLAB28-4L100	194	100	14-1/0	C 30	92
28	NLAB28-3L200	184	200	6-250	C 30	91	30	NLAB30-4L100	203	100	14-1/0	C 30	95
30	NLAB30-3L200	193	200	6-250	C 30	93	32	NLAB32-4L200	212	200	6-250	C 30	95
32	NLAB32-3L200	202	200	6-250	C 30	93	34	NLAB34-4L200	221	200	6-250	C 33	103
34	NLAB34-3L200	211	200	6-250	C 33	101	36	NLAB36-4L200	230	200	6-250	C 33	103
36	NLAB36-3L200	220	200	6-250	C 33	101	38	NLAB38-4L200	239	200	6-250	C 36	112
38	NLAB38-3L200	229	200	6-250	C 36	110	40	NLAB40-4L200	248	200	6-250	C 36	112
40	NLAB40-3L200	238	200	6-250	C 36	110	42	NLAB42-4L200	257	200	6-250	C 36	114
42	NLAB42-3L225	247	225	6-250	C 36	112							

### 2 pole main breaker

4	NLAB04-3AB050	103	50	12-4	C 22	60
6	NLAB06-3AB050	112	50	12-4	C 25	67
8	NLAB08-3AB050	121	50	12-4	C 25	67
10	NLAB10-3AB050	130	50	12-4	C 28	76
12	NLAB12-3AB100	157	100	6-1	C 28	76
14	NLAB14-3AB100	166	100	6-1	C 28	78
16	NLAB16-3AB100	175	100	6-1	C 28	78
18	NLAB18-3AB100	184	100	6-1	C 30	85
20	NLAB20-3AB100	193	100	6-1	C 30	85
22	NLAB22-3AB200	331	200	6-350	C 39	115
24	NLAB24-3AB200	340	200	6-350	C 39	115
26	NLAB26-3AB200	349	200	6-350	C 41	137
28	NLAB28-3AB200	358	200	6-350	C 41	137
30	NLAB30-3AB200	367	200	6-350	C 41	139
32	NLAB32-3AB200	376	200	6-350	C 41	139
34	NLAB34-3AB200	385	200	6-350	C 44	146
36	NLAB36-3AB200	395	200	6-350	C 44	146
38	NLAB38-3AB200	403	200	6-350	C 47	153
40	NLAB40-3AB200	412	200	6-350	C 47	153
42	NLAB42-3AB225	421	225	6-350	C 47	155

### 3 pole main breaker

6	NLAB06-4AB050	134	50	12-4	C 25	68
8	NLAB08-4AB050	143	50	12-4	C 25	68
10	NLAB10-4AB050	152	50	12-4	C 28	77
12	NLAB12-4AB050	161	50	12-4	C 28	77
14	NLAB14-4AB050	170	50	12-4	C 28	79
16	NLAB16-4AB100	198	100	6-1	C 28	79
18	NLAB18-4AB100	207	100	6-1	C 30	86
20	NLAB20-4AB100	216	100	6-1	C 30	86
22	NLAB22-4AB100	225	100	6-1	C 33	94
24	NLAB24-4AB100	234	100	6-1	C 33	94
26	NLAB26-4AB100	243	100	6-1	C 36	102
28	NLAB28-4AB100	252	100	6-1	C 36	102
30	NLAB30-4AB100	261	100	6-1	C 36	104
32	NLAB32-4AB200	425	200	6-350	C 41	141
34	NLAB34-4AB200	434	200	6-350	C 44	148
36	NLAB36-4AB200	443	200	6-350	C 44	148
38	NLAB38-4AB200	452	200	6-350	C 47	155
40	NLAB40-4AB200	461	200	6-350	C 47	155
42	NLAB42-4AB200	470	200	6-350	C 47	157

† **circuit breakers:** 15 ampere, single pole, 120 volt a-c branch breakers will be furnished unless otherwise specified. 20, 30, 40 and 50 ampere ratings can be supplied at the same price except increased main bus capacity may be required. See page 2 for price additions for increased mains capacity.

**space only or provision for future breakers:** Figure the panelboard on the basis of the total number of branches including futures and then deduct \$2.00 list for each single pole breaker omitted.

**two pole independent trip:** For each double pole (independent trip) circuit substituted for two single pole circuits, add \$.50 list to panel figured on basis of all single pole circuits.

▲ **Last two digits** indicate approximate box height. For actual heights, see page 3.

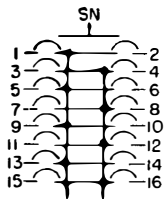
**type NLAB-AB panelboards** having combinations of one pole Quicklag and two and/or three pole E frame circuit breakers with mains not over 225 ampere, select panel having required number of Quicklag breakers (including any future spaces) and proper mains (adding for increased main bus capacity, if necessary, from page 2) and then add for E frame breakers from following table:

amperes	breaker		space only	
	2 pole	3 pole	2 pole	3 pole
15-20-30-40-50	\$26.50	\$39	\$5	\$7
70-90-100 @	45.00	58	5	7

● Boxes for panels requiring 70-90-100 ampere E frame breakers or space for same will be 6 1/2" deep.

◆ For panels requiring main bus in excess of 225 amperes, figure as type NDP panels.

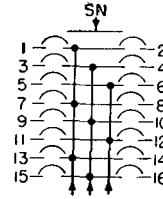
## E frame AB De-ion circuit breaker type



**3 wire SN**  
**120/240 volt**  
**a-c or d-c**

**type**  
**NAIB-3**

**boxes:**  
20" wide by 5 3/4" deep, 4" wiring gutters



**3 phase**  
**4 wire SN**  
**120/208 volt**

**type**  
**NAIB-4**

**boxes:**  
20" wide by 5 3/4" deep; 4" wiring gutters

no. of poles	catalog number	list price	mains ampere rating	mains wire range	cabinet reference number	approx. shipping weight
--------------	----------------	------------	---------------------	------------------	--------------------------	-------------------------

### lugs only in mains

4	NA1B04-3L050	\$104	50	14-6	C 17	52
6	NA1B06-3L050	127	50	14-6	C 19	58
8	NA1B08-3L050	150	50	14-6	C 19	60
10	NA1B10-3L050	173	50	14-6	C 22	67
12	NA1B12-3L100	196	100	14-0	C 22	69
14	NA1B14-3L100	219	100	14-0	C 25	78
16	NA1B16-3L100	242	100	14-0	C 25	80
18	NA1B18-3L100	265	100	14-0	C 28	88
20	NA1B20-3L100	288	100	14-0	C 28	90
22	NA1B22-3L200	311	200	6-250	C 30	99
24	NA1B24-3L200	334	200	6-250	C 30	101
26	NA1B26-3L200	357	200	6-250	C 33	110
28	NA1B28-3L200	380	200	6-250	C 33	112
30	NA1B30-3L200	403	200	6-250	C 36	121
32	NA1B32-3L200	426	200	6-250	C 36	123
34	NA1B34-3L200	449	200	6-250	C 39	132
36	NA1B36-3L200	472	200	6-250	C 39	134
38	NA1B38-3L200	495	200	6-250	C 41	154
40	NA1B40-3L200	518	200	6-250	C 41	156
42	NA1B42-3L225	541	225	6-250	C 44	165

no. of poles	catalog number	list price	mains ampere rating	mains wire range	cabinet reference number	approx. shipping weight
--------------	----------------	------------	---------------------	------------------	--------------------------	-------------------------

### lugs only in mains

6	NA1B06-4L050	\$137	50	14-6	C 19	59
8	NA1B08-4L050	160	50	14-6	C 19	61
10	NA1B10-4L050	183	50	14-6	C 22	68
12	NA1B12-4L050	206	50	14-6	C 22	70
14	NA1B14-4L050	229	50	14-6	C 25	79
16	NA1B16-4L100	252	100	14-1/0	C 25	81
18	NA1B18-4L100	275	100	14-1/0	C 28	89
20	NA1B20-4L100	298	100	14-1/0	C 28	91
22	NA1B22-4L100	321	100	14-1/0	C 30	99
24	NA1B24-4L100	344	100	14-1/0	C 30	101
26	NA1B26-4L100	367	100	14-1/0	C 33	110
28	NA1B28-4L100	390	100	14-1/0	C 33	112
30	NA1B30-4L100	413	100	14-1/0	C 36	121
32	NA1B32-4L200	436	200	6-250	C 36	125
34	NA1B34-4L200	459	200	6-250	C 39	134
36	NA1B36-4L200	482	200	6-250	C 39	136
38	NA1B38-4L200	505	200	6-250	C 41	156
40	NA1B40-4L200	528	200	6-250	C 41	158
42	NA1B42-4L200	551	200	6-250	C 44	167

### 2 pole main breaker

4	NA1B04-3AB050	\$131	50	12-4	C 22	64
6	NA1B06-3AB050	154	50	12-4	C 25	70
8	NA1B08-3AB050	177	50	12-4	C 25	72
10	NA1B10-3AB050	200	50	12-4	C 28	79
12	NA1B12-3AB100	241	100	6-1	C 28	81
14	NA1B14-3AB100	264	100	6-1	C 30	90
16	NA1B16-3AB100	287	100	6-1	C 30	92
18	NA1B18-3AB100	310	100	6-1	C 33	100
20	NA1B20-3AB100	333	100	6-1	C 33	102
22	NA1B22-3AB200	485	200	6-350	C 41	148
24	NA1B24-3AB200	508	200	6-350	C 41	150
26	NA1B26-3AB200	531	200	6-350	C 44	158
28	NA1B28-3AB200	554	200	6-350	C 44	160
30	NA1B30-3AB200	577	200	6-350	C 47	168
32	NA1B32-3AB200	600	200	6-350	C 47	170
34	NA1B34-3AB200	623	200	6-350	C 50	178
36	NA1B36-3AB200	646	200	6-350	C 50	180
38	NA1B38-3AB200	669	200	6-350	C 52	188
40	NA1B40-3AB200	692	200	6-350	C 52	190
42	NA1B42-3AB225	715	225	6-350	C 55	198

### 3 pole main breaker

6	NA1B06-4AB050	\$176	50	12-4	C 25	73
8	NA1B08-4AB050	199	50	12-4	C 25	75
10	NA1B10-4AB050	222	50	12-4	C 28	82
12	NA1B12-4AB050	245	50	12-4	C 28	84
14	NA1B14-4AB050	268	50	12-4	C 30	93
16	NA1B16-4AB100	310	100	6-1	C 30	95
18	NA1B18-4AB100	333	100	6-1	C 33	103
20	NA1B20-4AB100	356	100	6-1	C 33	105
22	NA1B22-4AB100	379	100	6-1	C 36	113
24	NA1B24-4AB100	402	100	6-1	C 36	115
26	NA1B26-4AB100	425	100	6-1	C 39	123
28	NA1B28-4AB100	448	100	6-1	C 39	125
30	NA1B30-4AB100	471	100	6-1	C 41	133
32	NA1B32-4AB200	649	200	6-350	C 47	173
34	NA1B34-4AB200	672	200	6-350	C 50	181
36	NA1B36-4AB200	695	200	6-350	C 50	183
38	NA1B38-4AB200	718	200	6-350	C 52	191
40	NA1B40-4AB200	741	200	6-350	C 52	193
42	NA1B42-4AB200	764	200	6-350	C 55	201

✦ **circuit breakers:** 15 ampere, single pole 120 volt a-c or d-c branch breakers will be furnished unless otherwise specified. 20, 30, 40 and 50 ampere ratings can be supplied at the same price except increased main bus capacity may be required. See page 2 for price additions for increased mains capacity.

**space only or provision for future breakers:** Figure the panelboard on the basis of the total number of branches including futures and then deduct \$7.50 list for each single pole breaker omitted.

▲ **Last two digits** indicate approximate box height. For actual heights, see page 3.

**type NAB-AB panelboards:** For panelboards having combinations of single pole and two and/or three pole E frame circuit breakers with mains not over 225 ampere, select panel having required number of single pole breakers and proper mains (adding for increased main bus capacity if necessary) and then add for two or three pole E frame breakers and space only from following table:

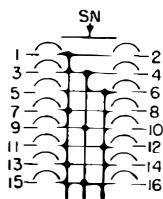
amperes	breaker		space only	
	2 pole	3 pole	2 pole	3 pole
15-20-30-40-50	\$26.50	\$39	\$5	\$7
70-90-100	45.00	58	5	7

● Boxes for panels requiring 70-90-100 ampere E frame breakers or space for same will be 6 1/2" deep.

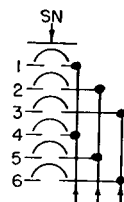
◆ For panels requiring main bus in excess of 225 amperes, figure as type NDP panels.



## 277 volts E frame, AB De-ion circuit breaker type



**3 phase**  
**4 wire SN**  
**277/480 volts**  
**type NHIB-4**  
**boxes:**  
 20" wide by 5 3/4" deep, 4" wiring gutter



**3 phase**  
**4 wire SN**  
**277/480 volts**  
**column type NHIB-4LX**  
**boxes:**  
 8 5/8" wide by 5 5/8" deep

no. of poles	catalog number +⊙	list price	mains ampere rating	mains wire range	cabinet reference number ▲	approx. shipping weight
--------------	-------------------	------------	---------------------	------------------	----------------------------	-------------------------

**lugs only in mains**

6	NHIB06-4L050	\$154	50	14-6	C 19	59
8	NHIB08-4L050	182	50	14-6	C 19	61
10	NHIB10-4L050	211	50	14-6	C 22	68
12	NHIB12-4L050	239	50	14-1/0	C 22	70
14	NHIB14-4L050	268	50	14-1/0	C 25	79
16	NHIB16-4L100	296	100	14-1/0	C 25	81
18	NHIB18-4L100	325	100	14-1/0	C 28	89
20	NHIB20-4L100	353	100	14-1/0	C 28	91
22	NHIB22-4L100	382	100	14-1/0	C 30	99
24	NHIB24-4L100	410	100	14-1/0	C 30	101
26	NHIB26-4L100	439	100	14-1/0	C 33	110
28	NHIB28-4L100	467	100	14-1/0	C 33	112
30	NHIB30-4L100	496	100	14-1/0	C 36	121
32	NHIB32-4L200	524	200	6-250	C 36	125
34	NHIB34-4L200	553	200	6-250	C 39	134
36	NHIB36-4L200	581	200	6-250	C 39	136
38	NHIB38-4L200	610	200	6-250	C 41	156
40	NHIB40-4L200	638	200	6-250	C 41	158
42	NHIB42-4L200	667	200	6-250	C 44	167

**3 pole main breaker**

6	NHIB06-4AB050	\$223	50	14-1/0	C 30	86
8	NHIB08-4AB050	251	50	14-1/0	C 30	88
10	NHIB10-4AB050	280	50	14-1/0	C 33	96
12	NHIB12-4AB050	308	50	14-1/0	C 33	97
14	NHIB14-4AB050	337	50	14-1/0	C 36	106
16	NHIB16-4AB100	382	100	14-1/0	C 36	108
18	NHIB18-4AB100	411	100	14-1/0	C 39	116
20	NHIB20-4AB100	439	100	14-1/0	C 39	118
22	NHIB22-4AB100	468	100	14-1/0	C 41	126
24	NHIB24-4AB100	496	100	14-1/0	C 41	128
26	NHIB26-4AB100	525	100	14-1/0	C 44	136
28	NHIB28-4AB100	553	100	14-1/0	C 44	138
30	NHIB30-4AB100	582	100	14-1/0	C 47	146
32	NHIB32-4AB200	737	200	6-350	C 47	173
34	NHIB34-4AB200	766	200	6-350	C 50	181
36	NHIB36-4AB200	794	200	6-350	C 50	183
38	NHIB38-4AB200	823	200	6-350	C 52	191
40	NHIB40-4AB200	851	200	6-350	C 52	193
42	NHIB42-4AB200	880	200	6-350	C 55	201

no. of poles	catalog number +⊙	list price	mains ampere rating	mains wire range	box height	approx. shipping weight
--------------	-------------------	------------	---------------------	------------------	------------	-------------------------

**lugs only in mains**

12	NHIB12-4LX050	\$239	50	14-6	3 1/4"	62
15	NHIB15-4LX100	282	50	14-6	30	62
18	NHIB18-4LX100	325	100	14-1/0	40	74
21	NHIB21-4LX100	368	100	14-1/0	48 1/4	74
24	NHIB24-4LX100	410	100	14-1/0	48 1/4	86
27	NHIB27-4LX100	453	100	14-1/0	56 1/2	86
30	NHIB30-4LX100	496	100	14-1/0	56 1/2	100

■ No Underwriters' label fur ished when used in conjunction with trough extensions and pull boxes.

**3 phase 4 wire SN**  
**120/208 volt**  
**column type NA1B-4LX**

Use NHIB-4LX prices, dimensions and wiring diagram but deduct \$2.75 list per pole.  
**Single pole 15 ampere breakers** in branches are standard and will be furnished unless otherwise specified. 20, 30 or 40 ampere breakers, if specified, will be furnished at same price. Add for increased mains if necessary (see page 2).  
**space only or provision for future breakers:** Figure the panelboard on the basis of the total number of branches, including futures, and deduct \$7.50 list for each breaker omitted.

**main breakers—price addition:** Add the following list prices to catalog "Main Lugs Only" prices.

	50 amperes	100 amperes	200 amperes
Type NH1B	\$68	\$84	not available
Type NA1B	39	58	not available

### information common to column-type panelboards

**Column type panelboards** as listed may be installed as a conventional panelboard under the National Electrical Code. To take full advantage of the features of this type of panelboard, the use of extension troughs and pullboxes is recommended rather than use of conduit.

When the extension troughs are used, Sec. 3624 of the 1951 National Electrical Code, reading as follows, should be observed:

"3624. Number of Conductors in Raceway. Wireways shall not contain more than 30 conductors at any cross section, unless the conductors are for signalling circuits or are control conductors between a motor and its starter and used only for starting duty. The sum of the cross-sectional areas of all contained conductors at any cross section of a wireway shall not exceed 20 per cent of the interior cross-sectional area of the wireway."

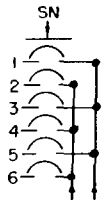
The correction factors specified in Note 4 of Table 1 of Chapter 10 are not applicable to the foregoing.

+ **circuit breakers:** 15 ampere, single pole 277 volt a-c branch breakers will be furnished unless otherwise specified. 20 ampere ratings can be supplied at the same price except increased main bus capacity may be required. See page 2 for price additions for increased mains capacity.

⊙ **space only or provision for future breakers:** Figure the panelboard on the basis of the total number of branches including futures and then deduct \$9 list for each single pole breaker omitted.

▲ **Last two digits** indicate approximate box height. For actual heights, see page 3.

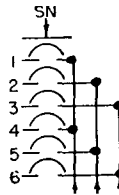
## Quicklag AB De-ion circuit breaker type



**3 wire SN**  
**120/240 volts**  
**a-c only**

**column types**  
**NLAB-3LX**  
**NLAB-3LXX**

boxes: 8 $\frac{5}{8}$ " wide by 5" deep (LX)  
7 $\frac{1}{4}$ " wide by 5" deep (LXX)



**3 phase**  
**4 wire SN**  
**120/208 volts**

**column types**  
**NLAB-4LX**  
**NLAB-4LXX**

boxes: 8 $\frac{5}{8}$ " wide by 5" deep (LX)  
7 $\frac{1}{4}$ " wide by 5" deep (LXX)

no. of poles	catalog number +♦	list price	mains ampere rating	mains wire range	box height	approx. shipping weight
--------------	-------------------	------------	---------------------	------------------	------------	-------------------------

### lugs only in mains

12	NLAB12-3LX100	130	100	14-1/0	29	58
14	NLAB14-3LX100	142	100	14-1/0	35	65
16	NLAB16-3LX100	154	100	14-1/0	35	66
18	NLAB18-3LX100	166	100	14-1/0	35	67
20	NLAB20-3LX100	178	100	14-1/0	41	71
22	NLAB22-3LX200	190	200	6-250	41	72
24	NLAB24-3LX200	202	200	6-250	41	73
26	NLAB26-3LX200	214	200	6-250	47	78
28	NLAB28-3LX200	226	200	6-250	47	79
30	NLAB30-3LX200	238	200	6-250	47	80
32	NLAB32-3LX200	250	200	6-250	53	87
34	NLAB34-3LX200	262	200	6-250	53	88
36	NLAB36-3LX200	274	200	6-250	53	89
38	NLAB38-3LX200	286	200	6-250	59	94
40	NLAB40-3LX200	298	200	6-250	59	95
42	NLAB42-3LX225	310	225	6-250	59	96

no. of poles	catalog number +♦	list price	mains ampere rating	mains wire range	box height	approx. shipping weight
--------------	-------------------	------------	---------------------	------------------	------------	-------------------------

### lugs only in mains

12	NLAB12-4LX050	140	50	14-6	29	59
14	NLAB14-4LX050	152	50	14-6	35	66
16	NLAB16-4LX100	164	100	14-1/0	35	67
18	NLAB18-4LX100	176	100	14-1/0	35	68
20	NLAB20-4LX100	188	100	14-1/0	41	72
22	NLAB22-4LX100	200	100	14-1/0	41	73
24	NLAB24-4LX100	212	100	14-1/0	41	74
26	NLAB26-4LX100	224	100	14-1/0	47	79
28	NLAB28-4LX100	236	100	14-1/0	47	80
30	NLAB30-4LX100	248	100	14-1/0	47	81
32	NLAB32-4LX200	260	200	6-250	53	88
34	NLAB34-4LX200	272	200	6-250	53	89
36	NLAB36-4LX200	284	200	6-250	53	90
38	NLAB38-4LX200	296	200	6-250	59	95
40	NLAB40-4LX200	308	200	6-250	59	96
42	NLAB42-4LX200	320	200	6-250	59	97

♦ **Single pole, 15 ampere breakers** in branches are standard and will be furnished unless otherwise specified. 20, 30 or 40-ampere breakers, if specified, will be furnished at same price. Add for increased mains if necessary from page 2.

**space only or provision for future breakers:** Figure the panelboard on the basis of the total number of branches including futures and deduct—\$3 list for each breaker omitted.

■ No Underwriters' label furnished when used in conjunction with trough extensions and pull boxes.

**main breakers:** Add the following list prices to catalog "main lugs only" prices:

	50 amperes	100 amperes	200 amperes
NLAB-3LX	\$27	\$45	not available
NLAB-4LX	39	58	not available

♦ Catalog numbers are for 8 $\frac{5}{8}$ " O.D. wide boxes. For 7 $\frac{1}{4}$ " O.D. wide boxes use same list price and add "X" to catalog number. Example NLAB18-4LXX-100.

## information common to column-type panelboards—continued

**neutral bars:** When column type panels with trough extension and pull box are furnished, the neutral bar will be placed in the pull box and not on the panel proper. When troughs or pull boxes are not furnished, neutral bar will be located on the panel at the top unless otherwise specified.

**trough extension list price:** Make following price addition for trough extending from top of panelboard to ceiling. Width and depth same as panelboard. Removable front.

length	list price	length	list price
36"	\$28	86"	\$40
46"	31	96"	44
56"	32	106"	47
66"	35	116"	51
76"	37	126"	57

**pull box**..... list price \$23.50

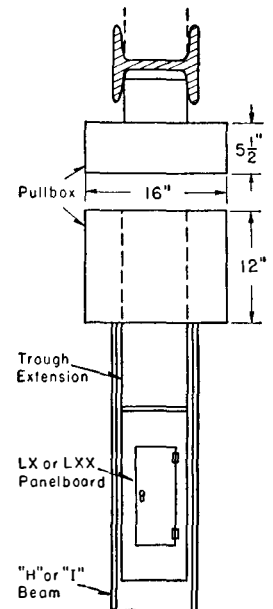
Standard dimensions are 12" high, 16" wide, 5 $\frac{1}{2}$ " deep. For 6 inch deep box . . . add 5% to list price.

Pull box will be furnished without knockouts unless drilling template accompanies order.

Column type panelboards are narrow single row construction primarily for "H" or "I" beam mounting. Inside beam dimensions should be checked closely against those of standard boxes to determine if standard boxes can be mounted as desired. If not order must state actual overall permissible outside width of box.

### approximate dimensions—inches

description	NLAB-LX NHIB-LX	NLAB-LX	NLAB-LXX
box width (O.D.)	8 $\frac{5}{8}$	8 $\frac{5}{8}$	7 $\frac{1}{4}$
box depth (O.D.)	5 $\frac{5}{8}$	5	5
bottom gutter	4	4	4
top gutter	4	4	4
side gutter	1 $\frac{1}{2}$	3 $\frac{1}{4}$	1 $\frac{3}{4}$





**convertible  
type NDP**

**up to 240 volts a-c, 125/250 volts d-c  
for feeder and power distribution circuits**

**mains capacity**—up to 600 amperes main lugs only  
up to 225 amperes main breaker

**branch circuit capacity**—up to 100 amperes 2 pole or 3 pole

**base list prices use once per panel**

type of main	amperes				
	50	100	225	400	600
lugs only, 2-pole.....	\$ 52	\$ 52	\$ 52	\$74	\$ 96
lugs only, 3-pole.....	62	62	62	84	106
main breaker, 2-pole.....	79	97	226	..	..
main breaker, 3-pole.....	101	120	275	..	..

Includes either main lugs or main breaker, top and bottom gutters with respective sections of bus, box and front to circuit edge. Remaining equipment for complete panelboard included in branch circuit prices and neutral bar if required. Maximum knockout which can be placed in 6½" deep box is for 4½" conduit. When 5" conduit knockout is required, increased box depth will be necessary.

**branch circuit list prices**

type of branch	list price		
	1 pole	2 pole	3 pole
15-20-30-35-40-50 amp E frame breaker.....	\$11.50	\$26.50	\$39.00
70-90-100 amp E frame breakers.....	.....	45.00	58.00
space only or provision for future breaker....	4.00	5.00	7.00

Add \$14 for each pair of single pole 125 volt, a-c only Quicklag AB breakers required. A minimum of four breakers must be priced.

**solid neutral bar list prices**

50 amperes	100 amperes	225 amperes	400 amperes	600 amperes
\$18	\$18	\$23	\$30	\$43

**subfeed breaker list prices (see note + page 11)**

225 ampere 2 pole J frame.....	\$184
225 ampere 3 pole J frame.....	232

**through feed lugs**

ampere rating	wire range	list price	
		2 hot bus bars	3 hot bus bars
225 amp and below.....	6-300	\$10	\$10
400 amp.....	300-600	30	37

■ When panel requires two sets of lugs (one "feed-in" and one "feed-out" figure as through feed lugs.)

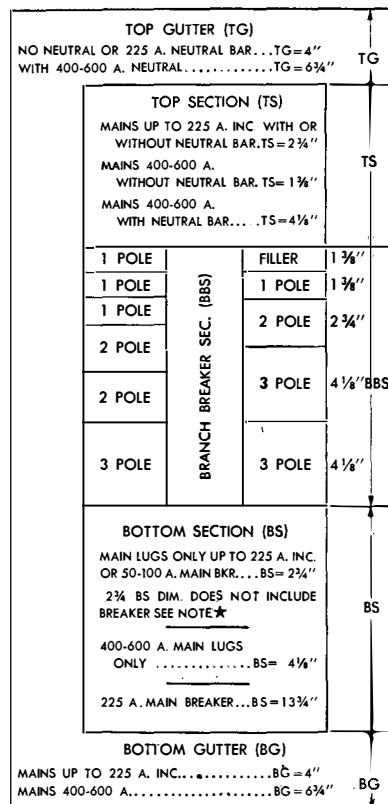
**split bus or meter loop**

amperes main bus	list price addition	
	2 hot bus bars	3 hot bus bars
100 amps. and below.....	\$24	\$34
225 amps.....	24	34
400 amps.....	51	60
600 amps.....	60	67

**layout instructions (see layout table below)**

1. Use proper top and bottom gutter allowances.
2. Add for proper top section.
3. Add for proper main section. **note:** When 50 or 100 ampere main breakers are required, they are to be laid out as branch circuits. (See note "★" under layout table.)
4. Panel heights must be in multiples of 2¾".
5. Total of dimensions gives proper box height. Use next nearest box height given in table on page 11. For weights and gauges of boxes and trims see page 11.
6. Cabinet height cannot exceed 68". When there are no lighting or appliance branch circuits and circuit section would cause this limit to be exceeded and mains capacity is not in excess of 400 amperes, estimate as two or more single panels, adding subfeed lugs to all but one panel.

**layout table**



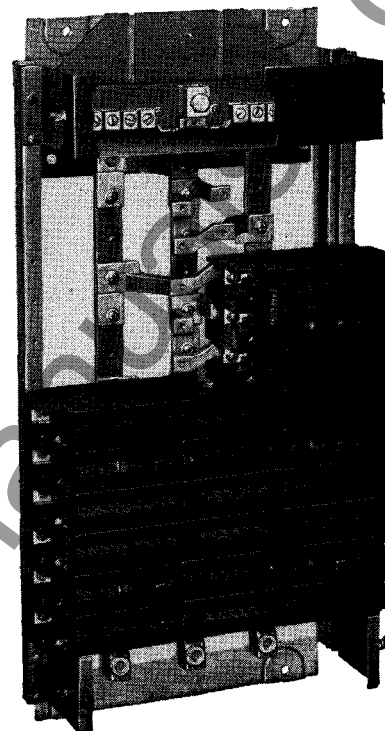
★ 50 ampere to 100 ampere main breakers inclusive will be furnished as branch breaker construction and dimensions should be determined accordingly.

## AB De-ion circuit breaker type—20" wide by 6½" deep boxes\*

### layout and pricing example:

top gutter		4"	
neutral bar		2¾"	1-225-A. Neutral Bar..... \$ 23.00
filler		1¾"	
20-amp 1-pole	20-amp 1-pole	1¾"	2-20-A. 1-pole..... 23.00
2-pole space	2-pole space	2¾"	2-50-A. 2-pole spaces.. 10.00
40-amp 2-pole	50-amp 2-pole	2¾"	1-40-A. 2-pole with 1-50-A. 2-pole..... 53.00
40-amp 3-pole	40-amp 3-pole	4½"	2-40-A. 3-pole..... 78.00
50-amp 3-pole	100-amp 3-pole	4½"	1-50-A. 3-pole..... 39.00 1-100A. 3-pole..... 58.00
225-amp main lugs		2¾"	Base price 225-A. lugs in main..... 62.00
bottom gutter		4"	Total list price of panelboard..... \$346.00
total		30"	(Cabinet size—30" H., 20" W. 6½" D. (Style 1648506))

\*If panel has 400 or 600 ampere main lugs only, two 225 ampere J frame subfeeds can be supplied (one at each end), but this will not only necessitate increase in box height but also increase in box width to 24". Figure subfeeds from prices on page 16 and then add \$54 for special construction.



### main terminal wire range

mains capacity and type mains	wire range
100 amp main lugs only	1—14 to 1/0
225 amp main lugs only	1—6 to 250 per leg
400 amp main lugs only	1—300 to 600 per leg
600 amp main lugs only	2—300 to 600 per leg
50 amp main breaker	1—12 to 4 per leg
100 amp main breaker	1—6 to 1 per leg
225 amp main breaker	1—6 to 350 per leg

© Panels having two and/or three pole 50 ampere maximum E frame branch circuits only (no single pole) with mains not in excess of 225 amperes can be supplied with 5¾" deep boxes instead of 6½" deep NDP boxes on request. Such panels must be priced as NDP, but the order write-up should specify type ABH panel and state box cannot be over 5¾" deep.

### box and trim list price

cabinet reference number	boxes—20" wide by 6½" deep (I. D.)					trims			
	style number	list price	height	gauge	shipping wt.	style number	list price	gauge	shipping wt.
CX-22	1648 503	\$16	21¾	14	26	K-80020	\$22	12	21
CX-25	1648 504	17	24½	14	28	K-80021	23	13	23
CX-28	1648 505	19	27¼	14	30	K-80022	24	12	25
CX-30	1648 506	20	30	14	32	K-80023	25	12	27
CX-33	1648 507	23	32¾	14	34	K-80024	27	12	30
CX-36	1648 508	25	35½	14	36	K-80025	29	12	32
CX-39	1648 509	28	38¼	14	38	K-80026	31	12	34
CX-41	1648 510	30	41	12	55	K-80027	33	12	37
CX-44	1648 511	33	43¾	12	58	K-80028	35	12	39
CX-47	1648 512	35	46½	12	61	K-80029	38	12	41
CX-50	1648 513	38	49¼	12	63	K-80030	41	12	44
CX-52	1648 514	41	52	12	66	K-80031	44	12	46
CX-55	1648 515	44	54¾	12	69	K-80032	47	12	49
CX-58	1648 516	47	57½	12	72	K-80033	50	12	53
CX-61	1648 517	50	60¼	10	95	K-80034	54	10	66
CX-64	1648 518	54	63	10	99	K-80483	55	10	70
CX-66	1648 519	58	65¾	10	103	1737845	60	10	74
CX-69	1648 520	65	68½	10	107	1737846	65	10	78

note: boxes will be furnished with blank ends unless drilling plan accompanies order



# distribution panelboards

**up to 600 volts a-c, 250 volts d-c**

**convertible  
type CDP**

**for feeder and power distribution circuits**

**mains capacity**—up to 1200 amperes, main lugs only  
up to 600 amperes, main breaker

**branch circuit capacity**—up to 600 amperes, 2 or 3-pole

**base list prices** use once per panel

Base price is determined by largest breaker trip and by largest lug required in breaker.

maximum breaker frame and trip rating in panel	largest lug(s) ■ per leg in breaker	capacity of mains				
		225 amps	400 amps	600 amps	800 amps	1000 amps
J-K Frame—225 amp	1-6 to 350 per leg	\$80	\$100	\$130	\$160	\$220
L Frame—400 amp	1-1/0 to 600 per leg ■	...	130	160	193	253
L Frame—600 amp	2-250 to 500 per leg	...	151	193	253	321

■ If two 350 MCM lugs per leg are required use base price for L frame, 600 ampere maximum trip rating.

1200 ampere mains will be supplied in place of 1000 ampere mains at no price increase when specifically called for in order write-up.

Includes top and bottom gutters, with respective sections of bus, and front to circuit edge. Remaining equipment for complete panelboard included in Branch Circuit prices and Neutral Bar prices (if required).

### branch circuit list prices

for panelboard with main breaker, price main breaker as a branch breaker after using proper base price

#### 240 volts a-c, 125/250 volts d-c

#### 600 volts a-c, 250 volts d-c

trip rating and type of breaker	no. poles	list prices			trip rating and type of breaker	no. poles	list prices			
		branch breaker	space only	provision for future breaker ◆			branch breaker	space only	provision for future breaker ◆	
15-20-30-40 or 50 E frame ©	1	\$ 17	\$ 5	\$ 7	15 or 20 E frame †	1	\$ 19	\$ 5	\$ 9	
	2	34	6	10		15-20-30-40 or 50 F frame ©	2	61	6	10
	3	48	7	13			3	78	7	13
70-90 or 100 E frame ©	2	50	6	10	70-90 or 100 F frame ©	2	74	6	10	
	3	64	7	13		3	92	7	13	
50-70-90 or 100 G frame ▲	2	100	12	20	50-70-90 or 100 G frame ▲	2	100	12	20	
	3	134	17	29		3	134	17	29	
125-150-175-200 or 225 J frame ©	2	184	12	24	125-150-175-200 or 225 J frame ©	2	184	12	24	
	3	232	17	35		3	232	17	35	
125-150-175-200 or 225 K frame ▲	2	228	22	36	125-150-175-200 or 225 K frame ▲	2	228	22	36	
	3	294	34	55		3	294	34	55	
250-275-300-325-350-400-450-500-550 or 600 L frame ▲	2	524	34	60	250-275-300-325-350-400-450-500-550 or 600 L frame ▲	2	524	34	60	
	3	677	34	88		3	677	34	88	

© non-interchangeable-trip

† special 1-pole 277 volt E frame breaker for 277/480, 3 phase, 4-wire solid neutral system

▲ interchangeable trip

◆ includes connectors and mounting brackets

note: For panel with main breaker, price main breaker as branch breaker after using proper base price.

### solid neutral bar list prices

225 amps	400 amps	600 amps	800 amps	1000 amps
\$23	\$30	\$43	\$56	\$71

### feed through lugs list prices

main amperes	feed through lugs ★	
	two hot bus bars	three hot bus bars
225	\$ 16	\$ 22
400	34	40
600	60	67
800	85	94
1000	102	111

★ When panel requires two sets of lugs (one "Feed-in" and one "Feed-out"), figure as feed through lugs.

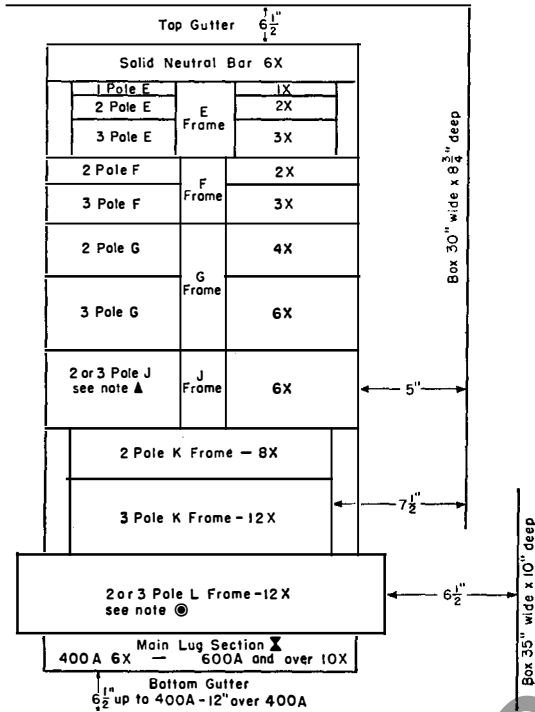
### split bus or meter loop list prices

main amperes	two hot bus bars	three hot bus bars
225 amp & below	\$ 43	\$ 51
400	51	60
600	60	67
800	85	94
1000	102	110

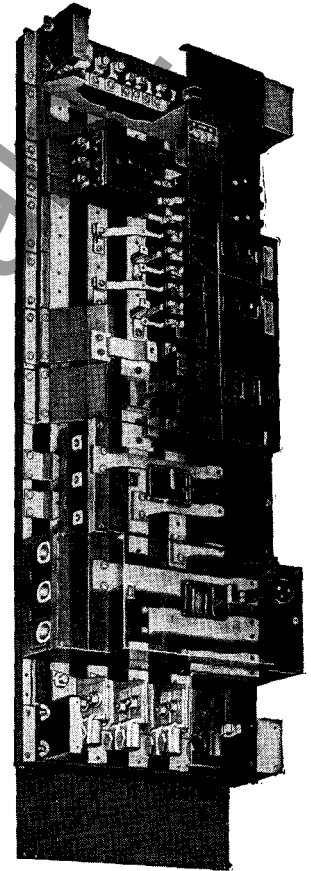
prices are effective March 15, 1954 and subject to change without notice  
discount symbol G selling policy 30-900



**AB De-ion circuit breaker type**  
**type CDP panel layout and box dimensions**



typical phantom view of type CDP panelboard showing various frame breakers and connectors



Uniform pole spacings and interchangeable detail parts permit maximum convertibility between different pole and ampere combinations. This advantage is particularly important on power feeder circuits where requirements may change frequently. Illustration indicates the bus and connecting strap arrangement for a convertible 3-phase power panelboard, and the breaker combination it makes possible.

1 Omit main lug section when figuring dimensions of panelboard having main breaker.

note ▲ E, F or G frame breakers cannot be located opposite J frame breakers in determining panelboard dimensions. When an odd number of J frame breakers is required, the space opposite the odd breaker must be left blank.

**to determine box dimensions**

To determine box dimensions, layout panel using X units indicated below. Having determined the total number of X units, refer to accompanying table. If total X units exceed 96, price as two complete panelboards.

box width and depth depend on largest breaker (main or branch)

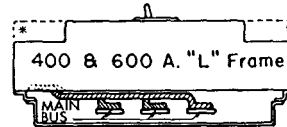
total "X" panel space	height panel only inches	box height, inches	
		mains 400 amps and below	mains above 400 amps
24X	16½	29½	35
25X to 32X	22	35	40½
33X to 40X	27½	40½	46
41X to 48X	33	46	51½
49X to 56X	38½	51½	57
57X to 64X	44	57	62½
65X to 72X	49½	62½	68
73X to 80X	55	68	73½
81X to 88X	60½	73½	79
89X to 96X	66	79	84½

largest breaker in the panel	box width	box depth
for 50, 100 and 225-ampere frame size 2 and 3-pole breakers	30 inches	8¾ inches
for 250 to 600-ampere, 2 and 3-pole breakers—with or without 50, 100 and 225-ampere frame sizes	35 inches	10 inches

note: Cabinet height cannot exceed 84½". When circuit section would cause this limit to be exceeded, estimate as two or more single panelboards, adding subfeed lugs to all but one panel.

Unless drilling template or other specified instructions accompany order, boxes will be furnished without knockouts. Specify whether flush or surface mounting.

note ©—"L" frame breakers



Two covers are used for the "L" frame breaker. Heavy outline shows shape of cover used when only 400 ampere trip with one—500 MCM lug per leg is used. Dotted line extensions show shape of cover which will be used on any L frame breaker whose trip rating exceeds 400 amperes or on any L frame breaker regardless of trip rating when 2—350 MCM or 2—500 MCM lugs per leg are required.

**main terminal wire range**

mains capacity and type mains	wire range
225 amp main lugs only	1—6 to 250 per leg
400 amp main lugs only	1—300 to 600 per leg
600 amp main lugs only	2—300 to 600 per leg
800 amp main lugs only	2—300 to 600 per leg
1000 amp main lugs only	3—300 to 600 per leg
1200 amp main lugs only	3—300 to 600 per leg
225 amp main breaker	1—6 to 350 per leg
400 amp main breaker	1—1/0 to 600 per leg
600 amp main breaker	2—250 to 500 per leg



## up to 600 volts a-c or d-c

type **CSF**

for feeder and power distribution circuits

mains capacity—up to 1200 amperes main lugs only  
—up to 600 amperes main switch

branch circuit capacity—up to 600 amperes, 2 or 3-pole

### base list prices use once per panel

maximum rating branch circuit	capacity of mains				
	200 amps	400 amps	600 amps	800 amps	1200 amps
200 amp and under	\$80	\$100	\$130	\$160	\$220
400 amp and under	..	130	160	193	253
600 amp and under	..	...	193	253	321

Base price includes main lugs (either single or three-phase), top and bottom gutter, with respective sections of bus, box and front to circuit edge. Remaining equipment for complete panelboard included in branch circuit and neutral bar prices (if required). Panels with 30, 60 or 100 ampere units only, NO LARGER, maximum 250 volts with not over 600 ampere main lugs only (100 ampere main switch), deduct \$4.00 list from base price and \$0.50 per branch circuit pole.

### branch circuit list prices fuses not included

main switches: Figure same as a single branch circuit from circuit list price after adding proper base price considering main switch as largest branch circuit.

ampere capacity	number poles	125 or 250 volts a-c or d-c			600 volts a-c or d-c		
		type of unit	list price	space only	type of unit	list price	space only
30/30	2	double unit	\$ 34 ◆	\$24 <sup>m</sup>	double unit	\$ 82 ◆	\$24 <sup>m</sup>
30/30	3	double unit	48 ◆	36 <sup>m</sup>	double unit	100 ◆	36 <sup>m</sup>
60/60	2	double unit	44 ◆	24 <sup>m</sup>	double unit	82 ◆	24 <sup>m</sup>
60/60	3	double unit	64 ◆	36 <sup>m</sup>	double unit	100 ◆	36 <sup>m</sup>
100/100	2	double unit	74 ◆	24 <sup>m</sup>	.....	..	..
100	2	.....	.....	.....	single unit	62	22
100/100	3	double unit	96 ◆	36 <sup>m</sup>	.....	..	..
100	3	.....	.....	.....	single unit	80	34
200	2	single unit	94	34	single unit	140	34
200	3	single unit	132	50	single unit	186	50
400	2	single unit	228	43	single unit	310	43
400	3	single unit	330	65	single unit	420	65
600	2	single unit	355	56	single unit	405	56
600	3	single unit	466	84	single unit	510	84

◆ When two branches of a twin unit are of a different ampere rating, for example: a 30-60 twin unit, figure a 60-60 twin unit; or, when a 60-100 twin unit, figure a 100-100 twin unit.  
 ■ Twin units cannot be furnished with a branch on one side and space only on the other side. For example: Should one 30 ampere branch be required, figure a 30-30 twin unit.

### solid neutral bar list prices

225 amps	400 amps	600 amps	800 amps	1000 amps
\$23	\$30	\$43	\$56	\$71

### feed through lugs list prices

main amperes	two hot bus bars	three hot bus bars
200	\$ 16	\$ 22
400	34	40
600	60	67
800	85	94
1200	102	111


When panel requires two sets of lugs (one "Feed-in" and one "Feed-out"), figure as feed through lugs.

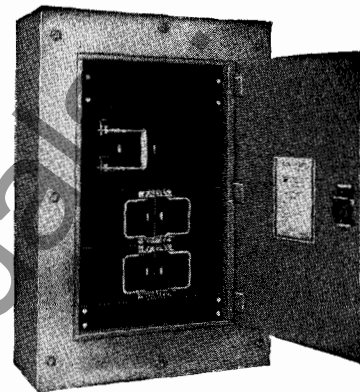
### split bus or meter loop list prices

amperes	two hot bus bars	three hot bus bars
225 amp & below	\$ 43	\$ 51
400	51	60
600	60	67
800	85	94
1000	102	110

**fusible hinged unit type**

**type CSF panel and box dimension data**

<b>Top Gutter</b>		<b>top gutter</b>		
		If No Neutral—	6"	
		With Solid Neutral 400 amp or less	6"	
		With Solid Neutral over 400 amp	12"	
Side Gutter	Y Solid Neutral Bar	<b>solid neutral bar</b>		
		200 amp or less	3"	
		400, 600, 800, or 1200 amp	6"	
	<b>Twin Units</b>		<b>main or branch fuse units</b>	
	30A	30A		
	60A	60A		
	100A	100A		
	<b>Single Unit</b>			
	100A			
	200A			
400A				
600A				
Side Gutter	<b>Main Lug Section</b>		<b>main lug sections</b>	
			200 amp or less	4½"
			400 amp	6"
			600 amp	9"
			800 amp	9"
			1200 amp	9"
			use whether panel has main lugs or main switch	
	<b>Bottom Gutter</b>		<b>bottom gutter</b>	
			400 amp or less	6"
			600, 800, or 1200 amp	12"



combination switch and fuse panel

**notes:**

Units can be furnished with smaller fuse clips. Use dimensions (and price) of maximum rating of unit.

Cabinet height cannot exceed 94½". When circuit section would cause this limit to be exceeded, estimate as two or more single panels, adding sub-feed lugs to all but one panel.

Cabinet height cannot be less than 28½". Blank space sections are added to make the difference if circuit requirements do not require a 28½" high cabinet.

When two branches of a twin unit are of a different ampere rating, for example; a 30-60 twin unit, use a 60-60 twin unit; or, when a 100-30 twin unit is required, use a 100-100 twin unit.

Twin units below 100 amperes cannot be furnished with a branch on one side and space only on the other side. For example: Should one 30 ampere branch be required, use a 30-30 twin unit.

Side gutters for the 27" wide box are 5" each, and for the 31" wide box are 7" each.

**main switch units** When main switch units are required, a branch unit should be used, but dimensions should also include a regular main lug section of same capacity as main switch.

Unless drilling template or other specific instructions accompany order, boxes will be furnished without knockouts. Specify whether flush or surface mounting.

**cabinet heights**

27 inches wide by 10¾ inches deep will take units up to 200 amp maximum

height
28½"
34½"
40½"
46½"
52½"
58½"

31 inches wide by 13½ inches deep will take units up to 600 amp maximum

height
64½"
70½"
76½"
82½"
88½"
94½"



## panelboard modifications<sup>▲</sup>

**important: type NPLAB panelboards**—Due to their compactness, the number and type of modifications which can be applied to type NPLAB panelboards are limited. Only items

marked with † symbol can be applied on type NPLAB. Only items marked with © symbol can be applied on type NLAB-LX or LXX.

### panel interior modifications

#### subfeed circuit breakers, lighting panelboards only

† Only one per panelboard

amperes	frame	wire range	2 pole	3 pole
15-50	E	12-4	\$ 27	\$ 39
70-100	E	6-1	45	58
125-200 (225)	J	6-350	184	232

#### † subfeed lugs—lighting panelboards only

amperes	wire range	type NPLAB	
		2 or 3-pole	other types 2 or 3-pole
50-100	14-1/0	\$10	\$10
200 (225)	6-250	10	10
200 (225)	1/0-4/0	10	10

#### †© split-bus or meter loop for lighting panelboards

amperes main bus	price addition	
	2 hot busbars	3 hot busbars
200 (225) and below	\$24	\$34

#### breaker handle lock-off device

available only on Quicklag lighting panelboards.....\$ .65

#### remote control switches in lighting panels

price includes complete installation except pushbutton controls

amperes		mechanically held	
		2 pole	3 pole
30	(Asco Bul. 909)	\$120	\$145
30	(Asco Bul. 920)	204	235
60	(Asco Bul. 920)	244	286
75	(Asco Bul. 920)	286	326
100	(Asco Bul. 920)	319	360
150	(Asco Bul. 920)	468	526
200	(Asco Bul. 920)	554	635

#### †© mountings

Mounting only of any standard wall-mounted wiring device (such as pilot light, tumbler switches) in front or box.

Device not included.

for first device.....\$16  
for each additional device..... 8

Drilling only to provide for mounting of instruments such as time clocks, add.....\$34

Device and mounting not included. If extra space is required, add for space as indicated above for increases over standard of end gutters, side gutters, and panelboard depth.

#### † main bus

800 amp per sq. in. density bus—lighting panelboards.....\$16  
800 amp per sq. in. density bus—distribution panelboards..... 41  
main lugs at top (instead of bottom)..... no charge  
omitting neutral bar on lighting panelboards..... no credit  
for two phase, 5 wire "lugs only in mains" on lighting panelboards use price of single phase 3 wire with same number of branches, and add.....\$25

#### † non-automatic circuit breaker

in mains only..... same price as automatic

### box, trim and door modifications

#### ††© special coatings

	maximum dimensions	
	20 x 60	35 x 84
special color paint <sup>■</sup> ..... box or front.....	\$ 50	\$ 50
special color paint <sup>■</sup> ..... box and front.....	50	50
cadmium plating..... box or front.....	34	75
cadmium plating..... box and front.....	59	118
hot-dipped galvanized..... box or front.....	85	169
hot-dipped galvanized..... box and front.....	126	220

■ Standard colors are: aluminum, black, brown, crystallac, gray, green or prime coat only..... no charge

#### †† special cabinet construction

	weather-proof		dust-resisting
	single door	door-back-of door	(gaskets for door & front)
boxes 20" wide or less	\$ 75	\$101	\$50
boxes over 20" wide	101	152	67

#### ††© increased dimensions and gauge

end gutters—for each 12" increase or fraction thereof in length.....\$34  
side gutters—for each 7" increase or fraction thereof in box width..... 34  
panel box depth—increased to 8" maximum..... 34  
increased gauge over standard—maximum 10 gauge  
box or front..... 25  
box and front..... 34

#### † special front and doors

† galvanized sheet steel front (instead of plain steel front).....\$34  
† door-in-door, one door over interior and one which exposes gutter..... 34  
† double or split doors, one above another or side by side..... 34  
† special directory frame..... 5  
glass for directory frame..... no charge  
spring door hinges—bommer, brass, plain—per door..... 7  
vault handle and 3 point catch (when not standard)..... 25  
extra lock in inner door (of door-in door panel)..... 5  
special Corbin #2510; Yale #511, #5115 lock..... 23  
special Corbin #2720; Yale #R274, #5105 lock..... 11  
master keying—only above specified locks—per lock..... 2

#### † special knockouts or drillings

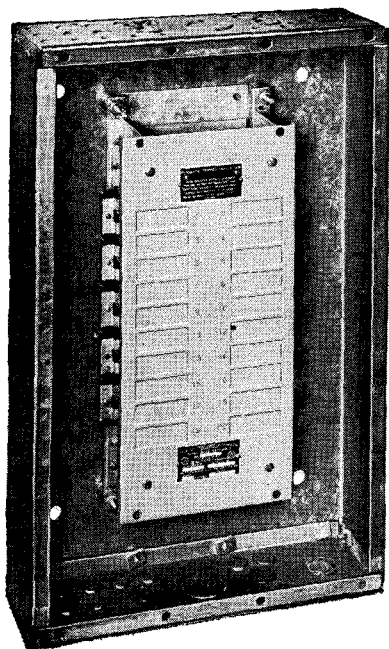
drilling template must accompany order..... no charge

#### † panelboard interiors and fronts to fit existing boxes

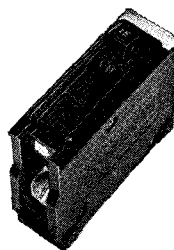
Westinghouse will furnish panelboards, without boxes to take care of old installations. No credit will be allowed from price of the complete panelboard for omitting the box. The price of the panel interior and special front of these jobs will be the price of the complete standard panelboard having the desired interior, providing the existing box is the same depth or deeper than our standard for the one being ordered. No special mounting brackets will be provided for mounting interior when existing box is deeper than our standard. If the existing box is shallower than our standard, add below for special built-up trim to provide necessary depth.

boxes shallower than standard  
to price of the complete standard panel, add.....\$34

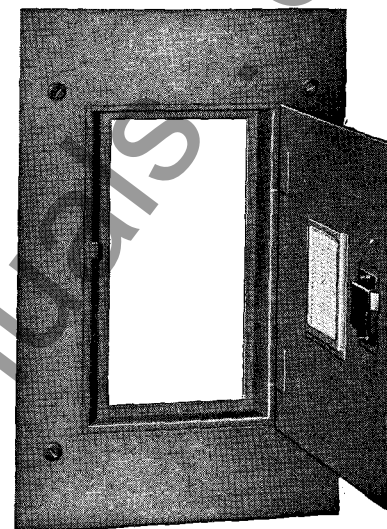
◆ On these items deduct 25% if individual order calls for duplicate cabinets with the same special feature applied, or if a quantity of 10 or more assorted panelboards is involved.  
▲ No modifications available on Add-A-Circuit panels.



box and interior



Quicklag P branch circuit breaker units



front with door

For convenience in stocking, handling and installation, **ADD-A-CIRKIT** panels are packaged as 3 separate units as follows:

- box and interior (less breakers)
- unit breakers (see next page)
- front with door

Order each unit by separate catalog number.

max. no. of ckt.	mains		box and interior less branch breakers			front with door		list price	approx. weight	box dimensions		
	ampere rating	wire range	cat. no.	list price	approx. weight	flush	surface			H	W	D
<b>single phase, 3-wire, 120/240 volt main lugs only</b>												
12	100	14-1/0	PQ123L	\$ 45	29	T211F	T201S	\$20	14	20"	15"	4 5/8"
20	100	14-1/0	PQ203L	57	33	T212F	T202S	22	16	24"	15"	4 7/8"
30	210	0-4/0	PQ303L	71	41	T214F	T204S	26	20	30"	15"	4 7/8"
40	210	0-4/0	PQ403L	87	47	T215F	T205S	28	23	34"	15"	4 7/8"
<b>single phase, 3-wire, 120/240 volt 2-pole main breaker</b>												
10	50	12-4	PQ103B	65	35	T213F	T203S	24	17	26"	15"	4 5/8"
12	70	6-1	PQ123BX	86	35	T213F	T203S	24	17	26"	15"	4 5/8"
20	100	6-1	PQ203B	98	40	T214F	T204S	26	20	30"	15"	4 5/8"
30	210	6-350	PQ303B	236	95	T217F	T207S	35	28	42"	17"	5 3/4"
40	210	6-350	PQ403B	251	105	T218F	T208S	38	31	46"	17"	5 3/4"
<b>three phase, 4-wire, 120/208 volt main lugs only</b>												
12	100	14-1/0	PQ124L	55	29	T211F	T201S	20	14	20"	15"	4 5/8"
20	100	14-1/0	PQ204L	67	33	T212F	T202S	22	16	24"	15"	4 5/8"
30	100	14-1/0	PQ304L	81	41	T214F	T204S	26	20	30"	15"	4 5/8"
40	210	0-4/0	PQ404L	97	48	T215F	T205S	28	23	34"	15"	4 5/8"
<b>three phase, 4-wire, 120/208 volt 3-pole main breaker</b>												
12	50	12-4	PQ124B	89	37	T213F	T203S	24	17	26"	15"	4 5/8"
20	100	6-1	PQ204B	121	41	T214F	T204S	26	20	30"	15"	4 5/8"
30	100	6-1	PQ304B	135	48	T216F	T206S	30	24	36"	15"	4 5/8"
40	210	6-350	PQ404B	300	106	T218F	T208S	38	31	46"	17"	5 3/4"

**ADD-A-CIRKIT** panels will be furnished only as listed. For lighting panels using Quicklag P circuit breakers and requiring modifications such as increased main bus capacity, subfeeds, increased gutter space, increased gauge, refer to NPLAB panelboard listings, page 5.

Panels are furnished with main lugs or main breakers located at the bottom. Main lug panels are designed so that the panel interior base unit can be reversed to provide main lugs at top.

Underwriters' listed—As enclosed panel-base assemblies under File E-24861. All panel-base assemblies having main breakers are suitable for use as service equipment. Catalog Nos. PQ123L and PQ124L are also suitable for use as service equipment when there are not more than six service sub-divisions, per paragraph 2351 NEC.

order each unit by separate catalog number

prices are effective March 15, 1954 and subject to change without notice  
discount symbol K selling policy 30-900



## ADD-A-CIRKIT panels

### Quicklag P circuit breakers list prices

single pole, 125 volts a-c only quick make and quick break

ampere rating	style number	list price
15	1614 757	\$2.60
20	1614 758	2.60
30	1614 760	2.60
40	1614 762	2.60
50	1614 763	2.60

†note: double-pole circuit breakers

(120/240 volts, a-c) obtained by using 2 single-pole breakers and one handle extension set style number 1720 375.

Handle extension style 1720 375

list price each .....\$0.20

Handle lock "OFF" or "ON" for quicklag breakers—style number 1720 814

list price each .....\$0.55

Approximate shipping weight per breaker—6 oz.

The following table is published for convenience in arriving at total price for various quantities of single pole breakers at \$2.60 list each.

no. of brkrs.	list price	no. of brkrs.	list price
2	\$ 5.20	22	\$ 57.20
3	7.80	23	59.80
4	10.40	24	62.40
5	13.00	25	65.00
6	15.60	26	67.60
7	18.20	27	70.20
8	20.80	28	72.80
9	23.40	29	75.40
10	26.00	30	78.00
11	28.60	31	80.60
12	31.20	32	83.20
13	33.80	33	85.80
14	36.40	34	88.40
15	39.00	35	91.00
16	41.60	36	93.60
17	44.20	37	96.20
18	46.80	38	98.80
19	49.40	39	101.40
20	52.00	40	104.00
21	54.60		

for circuit breaker discounts refer to selling policy 29-000

### example:

always order and price each unit as separate catalog number.

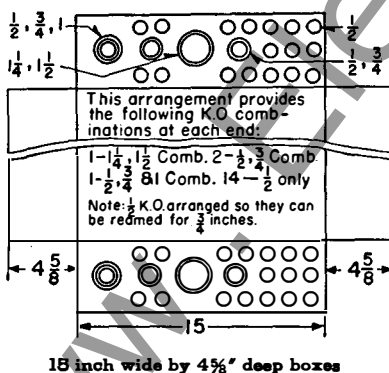
- 1—Box and Interior unit Cat. No. PQ303L.....\$71.00
- 1—Flush Mtg. Trim Cat. No. T214F.....26.00
- Total.....\$97.00

(subject to discount symbol K selling policy 30-900)

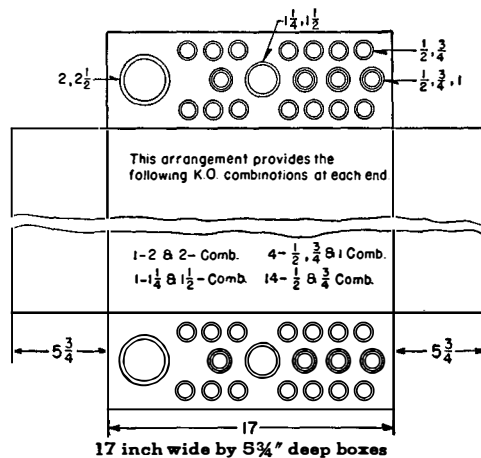
- 6—15 amp. 1 Pole Breakers S#1614 657.....\$15.60
- 8—20 amp. 1 Pole Breakers S#1614 658.....20.80
- 2—sets of S#1720 375 handle extension......40
- Total.....\$36.80

(subject to discount selling policy 29-000)

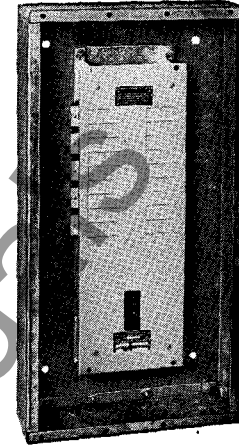
### standard knockout arrangement



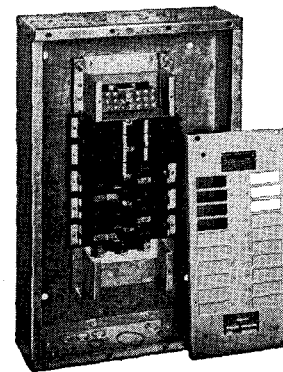
15 inch wide by 4 5/8" deep boxes



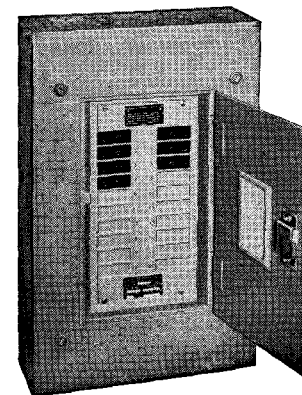
17 inch wide by 5 3/4" deep boxes



box and interior with 100 ampere main breaker



20 circuit panel with main lugs



panel with partial complement of breakers installed

[www.ElectricalPartManuals.com](http://www.ElectricalPartManuals.com)



www.ElectricalPartManuals.com