

# ANCHOR THE CUBE AT 989 THIRD DESIGN DISTRICT



D&D Building



bloomingdales

Bloomberg



A&D BUILDING

rochebobois  
PARIS

Iconic Multi-Level Retail Branding  
Flagship Opportunity

Surrounded by **D&D Building**, directly across from **Bloomingdale's**  
and steps from Manhattan's new **IKEA Planning Studio**



East 59th Street

Third Avenue

105'

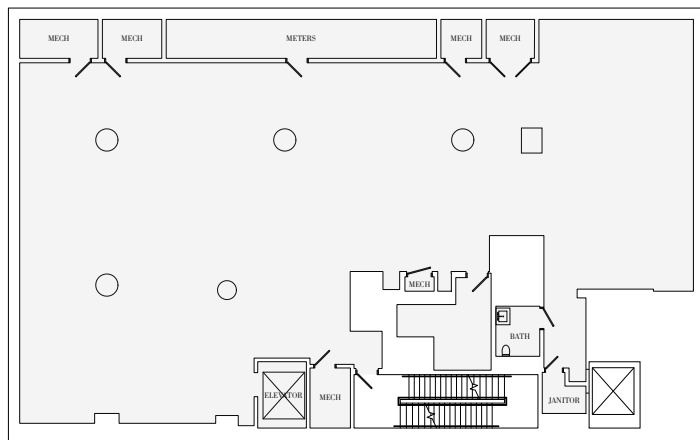
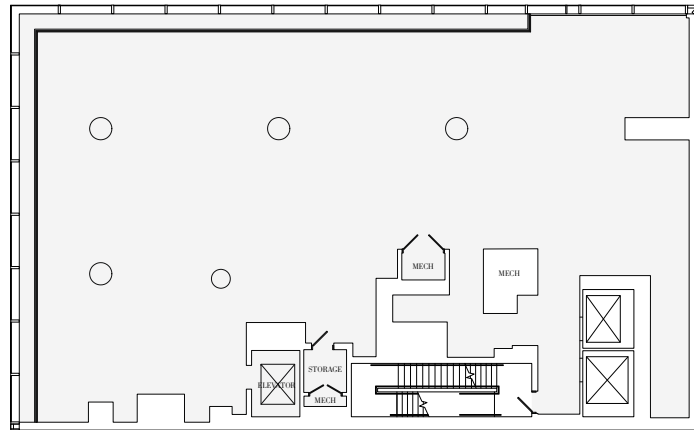
86'

65'3"

24'

48'

24'



# THE DETAILS

## Ground Floor

4,492 sq ft (417 sq m)

Ceiling Height 24' (7.3m)

## Second Floor

5,683 sq ft (528 sq m)

Ceiling Height 24' (7.3m)

## Lower Level

5,010 sq ft (465 sq m)

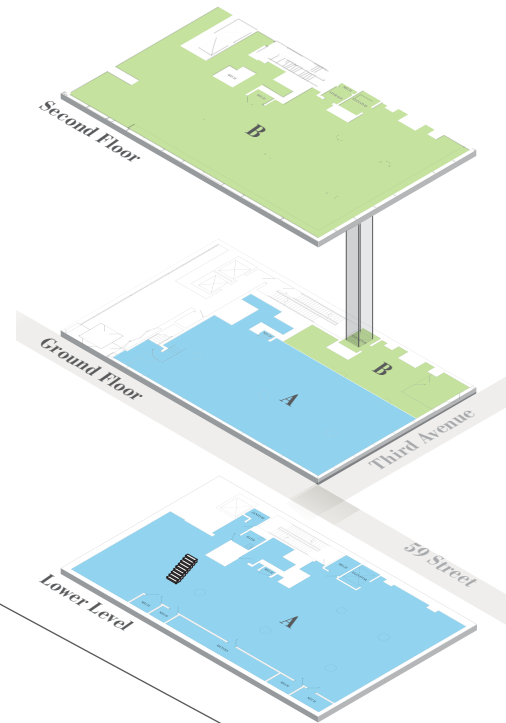
Ceiling Height 19' (5.8m)

## Frontage

Third Avenue 65'-3" (20m)

59th Street 86' - 105' (32m)

- Situated at the intersection of the Upper East Side and Midtown in the heart of Manhattan's Design District
- Directly across from Bloomingdale's with annual sales in excess of \$1 billion
- Developed by Macklowe Properties, creators of iconic retail including Fifth Avenue's Apple Cube and the Adidas flagship on Houston Street
- 150' (47.5m) of wraparound all glass frontage and up to 48' (14.6m) of vertical branding provides unparalleled exposure to pedestrians and 59th Street bridge vehicular traffic
- Dynamic retail environment with some of the city's most popular restaurants, home furnishings, fashion and beauty tenants
- Strong residential and commercial thoroughfare
- Steps from the 4, 5, 6, N, R, W with over 21 million annual riders
- 15 million vehicles pass by the site annually



### Division A

#### Premises

Ground 3,642 sq ft (338 sq m)  
Lower 5,010 sq ft (465 sq m)

#### Frontage

Third Avenue 40' (12.2m)  
59th Street 86'-4" (26.3m)

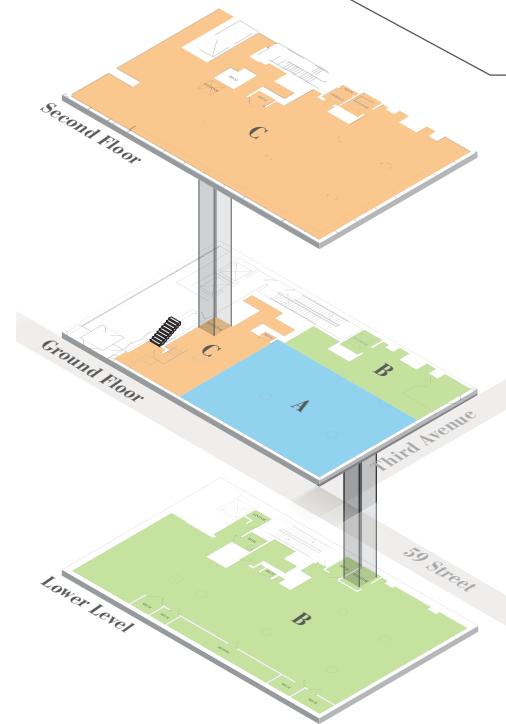
### Division B

#### Premises

Ground 850 sq ft (79 sq m)  
Second 5,683 sq ft (528 sq m)

#### Frontage

Third Avenue 25' (7.6m)



### Division A

#### Premises

2,892 sq ft (268 sq m)

#### Frontage

Third Avenue 40' (12.2m)  
59th Street 54' (16.5m)

### Division B

#### Premises

Ground 850 sq ft (79 sq m)  
Lower 5,010 sq ft (465 sq m)

#### Frontage

Third Avenue 25' (7.6m)

### Division C

#### Premises

Ground 750 sq ft (69 sq m)  
Second 5,683 sq ft (528 sq m)

#### Frontage

59th Street 23' (7m)



# WELCOME TO THE NEIGHBORHOOD

Dynamic retail environment situated at the intersection of the **Upper East Side** and **Midtown**, in the heart of Manhattan's **Design District**. Directly **across from Bloomingdale's** on 59th Street and Third Avenue retail corridors.

## \$180,673

Average household income

## 221,905

Office workers within 1/2 mile

## 63,303

Residents within 1/2 mile

## 15M

Cars pass by the site every week

## 21M

Annual subway riders

Steps from the 4, 5, 6, N, R, W trains

### MEET YOUR NEIGHBORS

DDB  
DECORATION A DESIGN BUILDING



bloomingdales



rochebobois  
PARIS

ETHAN ALLEN



modani  
FURNITURE

SAFAVIEH

JONATHAN ADLER



BoConcept

MUJI

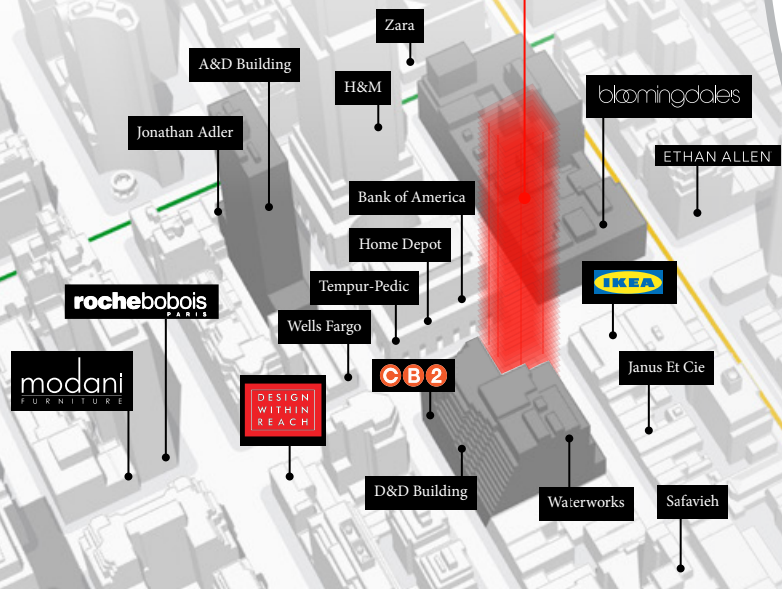
SEPHORA ZARA

WATERWORKS

Cassina

# ANCHOR THE DESIGN DISTRICT

**THE CUBE  
AT  
989 THIRD**



**LEXINGTON AVENUE**

- SEPHORA
- innisfree
- ZARA
- BANANA REPUBLIC
- GAP
- VICTORIA'S SECRET
- aerie
- AN EAGLE LETTERS

**EAST 62ND STREET**

- green
- Melissa
- RICK A BAGEL
- LUSH SPA
- at&t
- ISLE OF CAPRI
- DR
- COHEN'S
- ETHAN ALLEN

**EAST 61ST STREET**

- SABON
- ORVA SHOES
- Sprinkles
- at&t
- ISLE OF CAPRI
- DR
- COHEN'S
- ETHAN ALLEN

**EAST 60TH STREET**

- bloomingdales

**EAST 59TH STREET**

- Bloomberg
- The Container Store
- Bank of America
- citibank
- TEMPUR-PEDIC

**EAST 58TH STREET**

- Jonathan Adler
- Chick-fil-A
- Bank of America
- THE JUICE SHOP
- A&D BUILDING
- WELLS FARGO

**EAST 57TH STREET**

- BANK UNITED
- rochebobois
- modani
- TINA'S CUBAN
- JOEY KATZ
- ATLANTIC BANK

**THIRD AVENUE**

- Jack Rabbit
- Arche Shoes
- Jimmy Arts & Framing
- Biscuits & Bath
- Smile Direct Club
- LEARNING EXPRESS TOYS
- Sunglass Hut
- Starbucks
- VENFIELD
- ANASSA TAVERNA
- CINEMA 1, 2 & 3
- IKEA
- THE SHADE STORE
- PATSY'S PIZZERIA
- ALT BOX
- MY GYM
- TRACY ANDERSON
- 989
- SAMUEL & SONS
- verizon
- CB2
- WATER WORKS
- MICHAEL DAWKINS HOME
- CONCEPT SALON
- CRUNCH FITNESS
- LE TRIUMPH
- MATRESSFIRM
- MOONSTRUCK
- DESIGN WITHIN REACH
- TD Bank
- OAK & BARREL
- PITA GRILL
- DUNKIN' DONUTS

**SECOND AVENUE**

- LILLIAN NASSAU
- WHOLE FOODS
- Bank of America
- DR



**Leasing Contact**

**Gary Trock**  
gary.trock@cbre.com  
+1 212 984 8035

**Zach Parisi**  
zach.parisi@cbre.com  
+1 212 984 6685

**CBRE Macklowe Properties**

© 2019 CBRE, Inc. All rights reserved. This information has been obtained from sources believed reliable, but has not been verified for accuracy or completeness. You should conduct a careful, independent investigation of the property and verify all information. Any reliance on this information is solely at your own risk.