

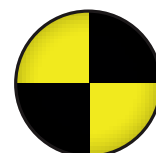
DAHL DOCKING SYSTEMS

ENGLISH



version 01_2015

DAHL
ENGINEERING



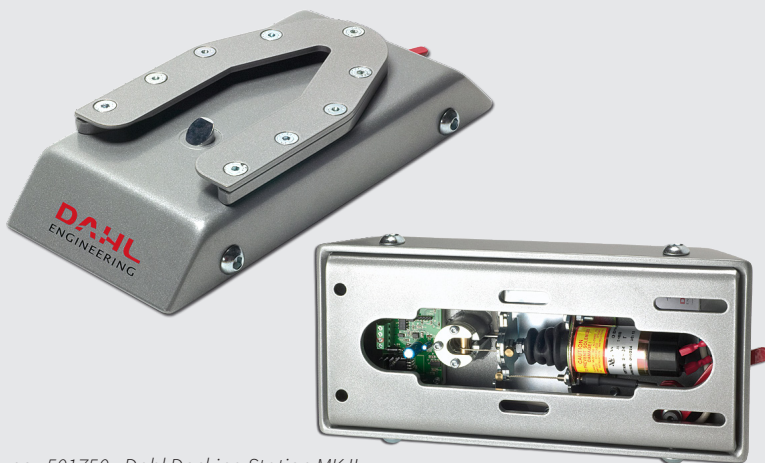
Dahl Docking Systems Mk II and VarioDock™

Dahl Engineering sets again new standards for flexibility and safety!

We are happy to announce that we can now offer two different types of docking stations, which can be used for numerous different transportation needs. Besides our docking station MK II, we can now also offer an electrical height adjustable docking station, by the name of Dahl VarioDock™, which also can be used for anchoring our seats. Almost all the wheelchairs, which have been tested with our Dahl Docking Station MK II, are compatible with Dahl VarioDock™.

Please find more information about the two docking stations on the following pages.

Dahl Docking Station MK II



Art. no.: 501750 - Dahl Docking Station MK II

Dahl Engineering's Docking System provides a hitherto unseen flexibility and safety for wheelchair users.

The Docking System is the first system on the market to be tested and TÜV certified in accordance with EU safety requirements for cars (M1).

In testing, the docking station has proved to be so strong that it can withstand a load corresponding to a wheelchair weight of more than 200 kg + passenger provided that the safety belt is installed in the traditional manner in the floor of the vehicle.

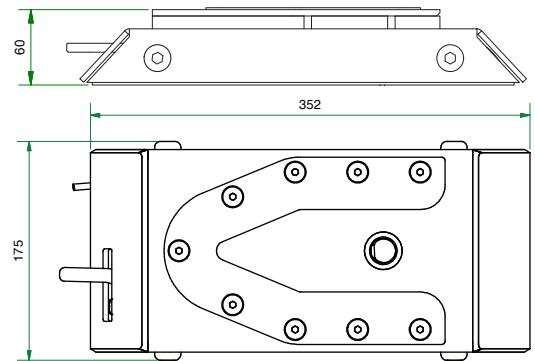
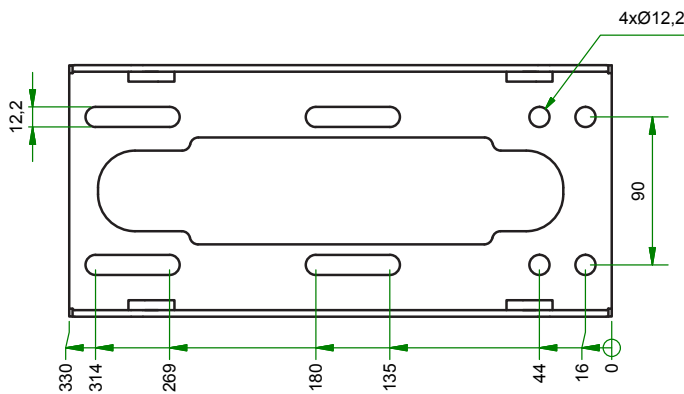


Art. no. 501750

Contents of a standard set for MK II.



Dahl Docking Station MK II - Easy to operate



You can find more information about maintenance and installation of the Dahl Docking Station MK II on our website.

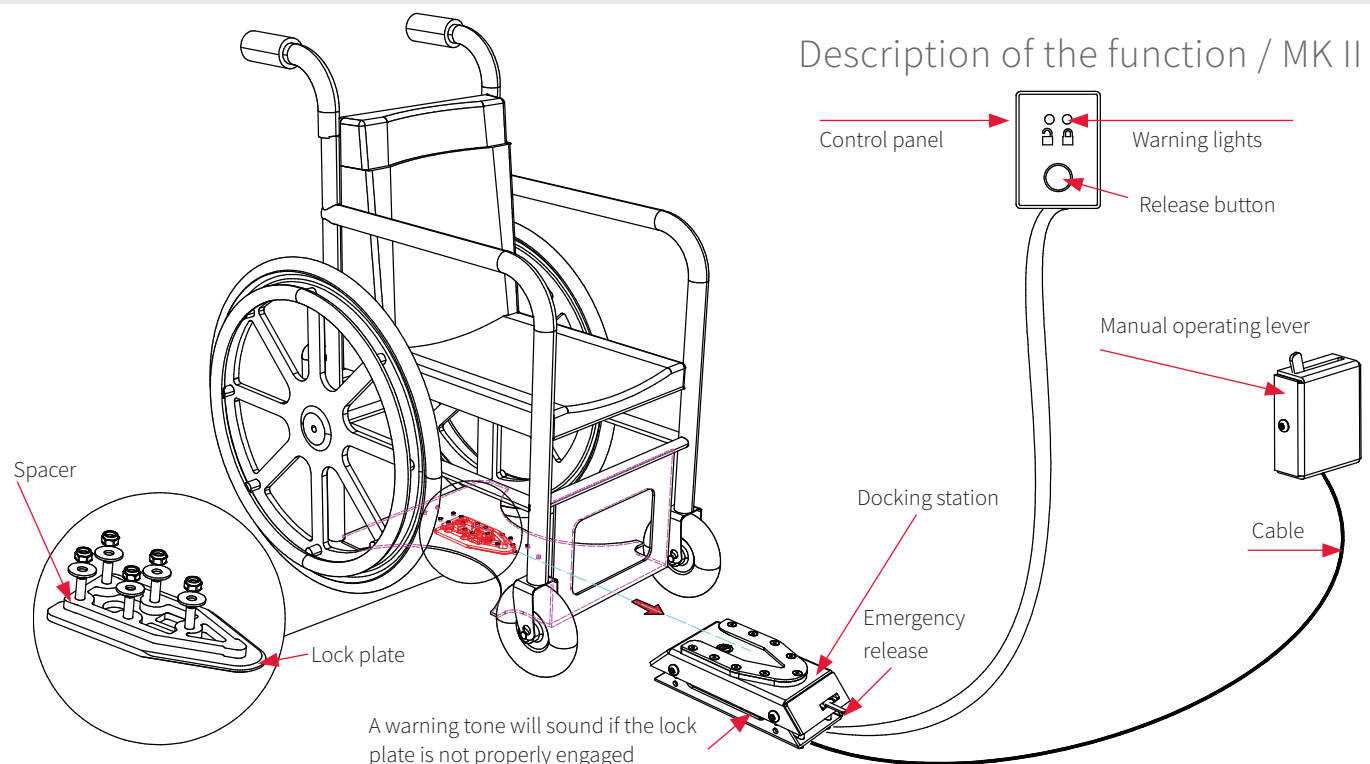


A lock plate and a spacer must be fitted under the wheelchair. When the wheelchair is maneuvered towards the docking station, it is guided into place by means of the lock plate and is secured automatically.

The wheelchair is released by pressing the red button on the control panel.



Description of the function / MK II



Dahl VarioDock™

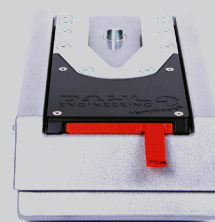
Our new Dahl VarioDock™ is not only the only power-height adjustable wheelchair Docking station, which facilitates securing wheelchairs with different ground clearances and vehicle passenger seats with integrated 3 point belt, but it is also the only system to meet standard ISO 10542-1, ISO 7176-19 and the strict M1 in-vehicle testing requirements for seats and seat belt anchorages according to ECE regulations 14 and 17.

Thanks to the Dahl VarioDock™ system, securing wheelchair users and other seated occupants can be carried out with an unprecedented ease, speed and safety. The Dahl VarioDock™ docking system offers more flexibility and versatility than any other seat anchoring system because the seat and wheelchair layout can be changed very quickly with a minimum of effort and time consumption. A docking system also improves the working environment considerably for drivers, who often struggle with cramped spaces and bad working positions when tying down wheelchairs with 4 point strap systems.

- Power height adjustment from 60 - 90 mm.
- Time consumption only ¼ of tying down wheelchair with 4 point strap system.
- Tested for wheelchairs with a weight of up to 200 kg plus user.
- Approved for anchoring Dahl COMFORT Seat
- 4 step power tightening system to eliminate unwanted play.
- Opening time for lock selectable in 5 or 8 seconds intervals.
- "Service required" warning in display
- Improves working environment for drivers.
- No tie down straps on vehicle floor to trip over.
- Crash tested and CE-marked with approximately 100 wheelchairs

Dahl VarioDock™

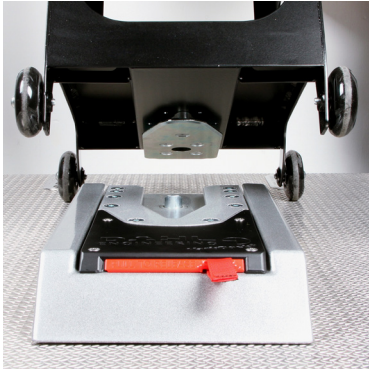
Patent pending



Dahl VarioDock™



Dahl VarioDock™ can be used to secure manual and powered wheelchairs with a weight of up to 200 kg plus user, as well as our Dahl COMFORT Seat with integrated 3 point safety belt.



Contents of Dahl VarioDock™ base kit #503600.



Accessories for Dahl Docking System MK II and VarioDock™

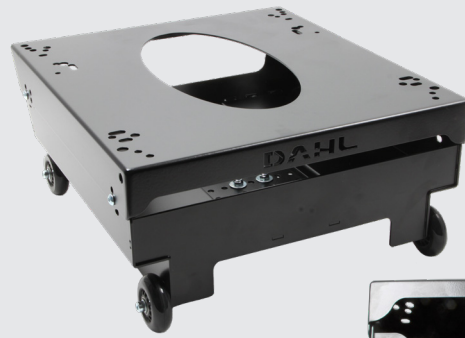


Seat base frame for the docking station

Art. no. 503245
Height 134-202 mm

Art. no. 500650
Height 180-222 mm

Art. no. 502270
Height 237-279 mm



Easy to swap seats

A newly developed seat base frame means that the docking station can be used for either wheelchairs or car seats depending on what is required. It is easy to install the vehicle's original seat on the base frame, and it is easy to remove if the driver and passenger need to swap seats.

The base frame is equipped with holes for the installation of seats such as an original driver's seat in Nissan NV 400, Opel Movano, Renault Master, VW T5, MB Sprinter, VW Crafter, MB Vito/Viano and Dahl Sport.

Our seat base frames have been tested in accordance with ECE regulation 14 and 17.

The seat base frame can be assembled in 36 different positions for optimum flexibility and comfort, thus allowing the seat height and angle to be adjusted.



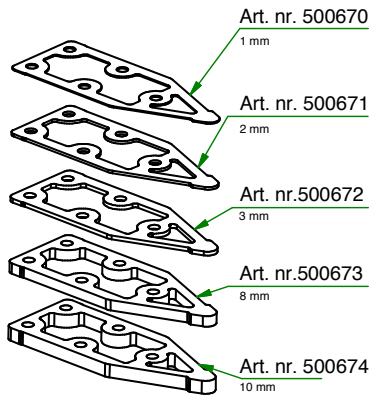
Emergency release tool

Art. no. 503161

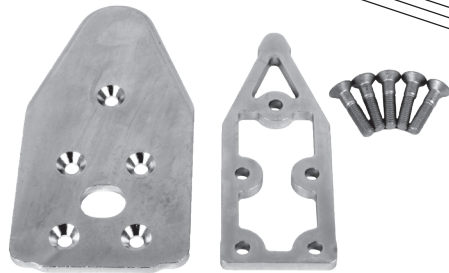
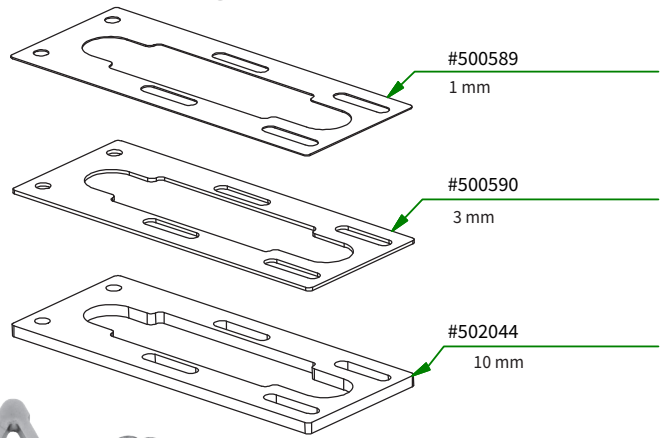


Accessories for Dahl Docking System MK II

Spacers for height adjustment of the lock plate

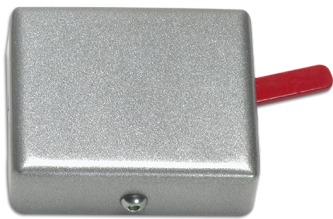


Spacers for height adjustment of the Docking Station



Manual operating lever

Art. no. 500680

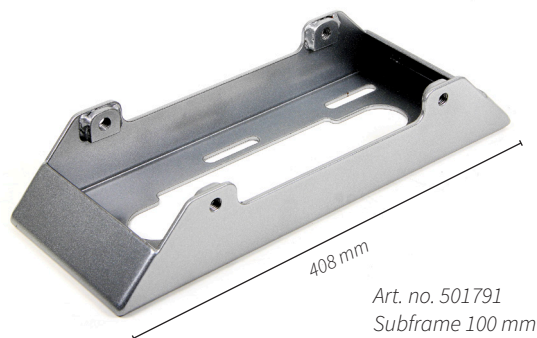
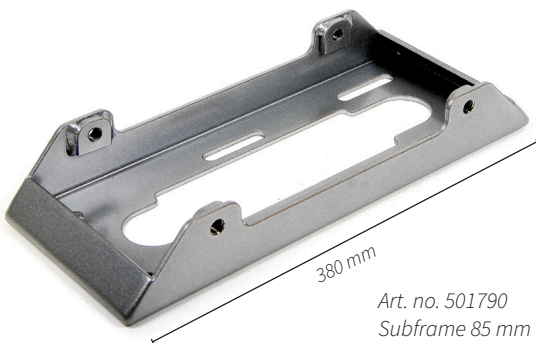


Cable for manual operating lever

Art. no. 502418



Subframes for Docking Station Mk II



Adaptation kits for the wheelchair¹

EU legislation when installing a docking system to a wheelchair

The EU medical device directive states that a CE-marked medical device, which has been customized outside the manufacturer's specifications, thereby become a customized medical device and that the CE-marking must be removed. Anyone who customizes a CE-marked medical device outside the manufacturers specifications is responsible for quality, safety and performance of the device and becomes the responsible manufacturer of the customized device.

Complying with the wheelchair manufacturers user- and installation guide when installing the Dahl Docking System, will ensure that the wheelchair manufacturers CE-marking will remain intact.

Manufacturers manuals for all the wheelchairs, which have been approved and CE-marked with the Dahl Docking System can be downloaded from our homepage.

WHEELCHAIR - Make & Model	Possibility of fitting the docking lock plate is standard feature on wheelchair	Retrofittable adaptation kit available from Dahl Engineering	Retrofittable adaptation kit available from Wheelchair manufacturer	Adaptation kit CANNOT be retro fitted. Adaptation kit only available from wheelchair manufacturer if ordering option with wheelchair.	Compatible with VarioDock
Alu Rehab Netti Mobile D1		#501822			✓
Degonda T4 2x2		#503213			✓
Degonda T4 Compact		#503213			✓
Degonda T4 X-Panda		#503213			✓
Dietz Power Sango F			Dietz#5000062		✓
Dietz Power Sango M			Dietz#5000062		✓
Dietz Power Sango R			Dietz#5000062		✓
Dietz Power Sango Slimline M			Dietz#5000062		✓
Invacare FDX					✓
Invacare Storm4				#ATZ1450	✓
Invacare Storm4 Xplore				#ATF1450	✓
Invacare TDX SP2 (WB)				#SP1564843	✓
Invacare TDX SP2 (NB)				#SP1564807	
Karma EVO Altus / Lectus-LR		#503194			✓
Karma Medical Leon			15120000023		✓
Karma Medical Morgan			Karma#4020169		✓
Karma Mid Lectus		#503339			✓
Medema 1121 Jazzy	✓				✓
Medema MC 1122	✓				✓
Medema MC 1124		#502378			✓
Meyra i-Chair Mc3			Meyra#1079817		✓
Meyra i-Chair Mc Mid		#503213			✓
Neatech EVO 1		#503340			✓
Neatech EVO 3		#502210			✓
New Live Magix					✓
NHD LS 300		#503341			✓
Otto Bock Juvo B4 RWD		#503184			✓
Otto Bock Juvo B5/B6 FWD		#503261			✓
Otto Bock Juvo B5/B6 MWD		#503261			✓
Otto Bock Juvo B5/B6 RWD		#503261			✓
Paravan Biolution			Paravan#000033187		✓
Paravan Heavy Duty			Paravan#000033187		✓
Paravan PR 50			Paravan#000033187		✓
Permobil C400		#502215			✓
Permobil F3 Corpus	✓*				✓
Permobil F5 Corpus	✓*				✓
Permobil F5 Corpus VS	✓*				✓

* Prepared for Dahl Docking is available as standard feature, however please inquire with Permobil regarding the availability in your country.

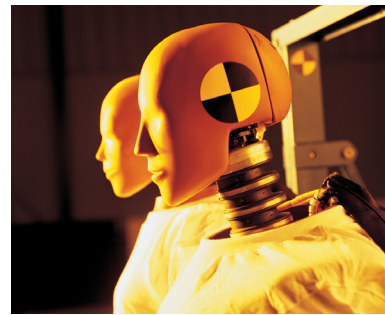
Adaptation kits for the wheelchair¹

WHEELCHAIR - Make & Model	Possibility of fitting the docking lock plate is standard feature on wheelchair	Retrofittable adaptation kit available from Dahl Engineering	Retrofittable adaptation kit available from Wheelchair manufacturer	Adaptation kit CANNOT be retro fitted. Adaptation kit only available from wheelchair manufacturer if ordering option with wheelchair.	Compatible with VarioDock
Permobil M3 Corpus*	✓				✓
Permobil M5 Corpus*	✓				✓
Pride Quantum Q6 Edge 2.0		#502378			✓
Pride Quantum 4Front/QTRECK		#503236			✓
Qimova PE		#502185			✓
Roltec Boa		#502046			✓
Roltec Boa 2		#503342			✓
Roltec Moveo		#501819			✓
Roltec Viper			Roltec#70658		✓
Roltec Vision			Roltec#70658		✓
Scout Mobility X10 FWD		#503366			✓
Scout Mobility X10 MWD		#503366			✓
Scout Mobility X10 RWD		#503366			✓
SKS Swiss Viva Grand M		#503342			✓
Sunrise Medical Q100 R		#503259			✓
Sunrise Medical Q200 R		#503259			✓
Sunrise Medical Q400 F		#501798			✓
Sunrise Medical Q400 M		#501798			✓
Sunrise Medical Q500 F		#501798			✓
Sunrise Medical Q500 M		#501798			✓
Sunrise Medical Q500 R		#501798			✓
Sunrise Medical QUICKIE Jive F		#501578			✓
Sunrise Medical QUICKIE Jive M		#501570			✓
Sunrise Medical QUICKIE Jive R		#501578			✓
Sunrise Medical QUICKIE Jive R2		#501756			✓
Sunrise Medical QUICKIE Puma 40 FWD - SedeoPro + seating system		Inquire at Dahl			✓
Sunrise Medical QUICKIE Puma 40 RWD - SedeoPro + seating system		Inquire at Dahl			✓
Sunrise Medical QUICKIE Salsa M		#500790			✓
Sunrise Medical QUICKIE Salsa M2 & Salsa Mini 2		#501798			
Sunrise Medical QUICKIE Salsa R		#500769			✓
Sunrise Medical QUICKIE Salsa R2		#501756			✓
Sunrise Medical You-Q Luca FWD Qlass seat package			B.3000598		✓
Sunrise Medical You-Q Luca RWD			B.3000598		✓
Sunrise Medical You-Q Samm MWD					✓
TA Service IQ RWD			TA #97189		✓
TA Service IQ FWD			TA #97189		✓
TA Service IQ MWD			TA #97189		✓
TA Service Indoor Wave			TA #95255		✓
Vela Blues 300			Vela #926425		✓
Wolturnus A-Run				Wolturnus #20778	✓
Wolturnus Rex 350				Wolturnus #20779	✓
Wolturnus W5				Wolturnus #20776 or 20777	✓

Wheelchairs which have gone out of production can be found on our website.

1. Subject to wheelchair manufacturer changing specifications / This list is constantly being updated.

WHERE SAFETY STARTS



Development and crash-test centre
Where safety starts

Dahl Engineering ApS | Løvevej 3 | DK-7700 Thisted | Denmark | Phone: +45 9618 0077
e: sales@dahlengineering.dk | w: wtors.com

Tilde Grafisk