



Dana Original Equipment Driveline Quick Reference Guide



Contents

Industry leaders for more than a century, Dana have developed the Spicer® brand and product portfolio to be the global benchmark in performance, quality, and reliability, meeting our customers' needs in a wide range of applications – from passenger cars to freight-hauling highway trucks to agriculture and construction machines.

Dana are a world leader in the supply of axles, driveshafts, off-highway transmissions, sealing and thermal-management products, and genuine service parts. Global resources and many of the best engineering minds in the industry allow us to continue improving the performance of established product lines, while relentlessly designing and developing new systems.

Driveshaft engineering experts Dana's Spicer® GWBTM driveshafts are recognized for quality performance. Based on a long-standing commitment to customer satisfaction, our portfolio include a wide range of products for multiple applications, covering a torque range from 2.400 to 15.000.000 Nm.

3	Dana Australia Sales & Customer Service Contact List
4	Premium Spicer Life® Series U-Joints
5	Maintenance-Free Performance for your Commercial Vehicles
6	Connection Variants
7	Driveshafts
8	DANA Universal Joints
10	Driveshaft Series 1310/1330/1350/1410/1480/1550
12	Do you know? How to identify failure and probable cause
13	Driveshaft Series 1610/1710
14	Do you know? Forefathers of Dana

15	Driveshaft Series 1710/1760/1810
17	Do you know? Dana sells grease and oils
18	Driveshaft Series 1810/SPL 170/SPL 250
19	Do you know? Dana sells service tools
20	Centre Bearings and Universal Joints
21	Do you know? Spicer 10 Series™ Driveshaft Components
22	Miscellaneous
23	Spicer Bearing Strap and U-Bolt Kits & OE-Quality Service Parts for Automotive Driveshafts



START



PREVIOUS PAGE



NEXT PAGE



END



Dana Australia Sales & Customer Service Contact List

Brad Wolstenholme
Head of Sales & Marketing

+61 418 972 143
brad.wolstenholme@dana.com

Customer Service & Product Support

Warren Farrugia
Customer Service Manager

+61 408 308 995
warren.farrugia@dana.com

Suzanne Westwell
Senior Customer Service Coordinator

1300 00 DANA
aus.spicer@dana.com

Vivian Cameron
Support Coordinator

08 9438 8888
vivian.cameron@dana.com

HYW bJW'Gi ddcfh

Shane Carey
Product Support Manager

+61 438 559 385
shane.carey@dana.com

Nicole Noy
Product Support Officer

+61 3 8779 8504
nicole.noy@dana.com

Commercial Vehicle

Peter Verde
Sales Manager – OE

+61 408 136 824
paul.french@dana.com

Paul French
Business Development Manager

+61 408 136 824
paul.french@dana.com

Jock Pickford
Fleet Manager

+61 408 571 498
jock.pickford@dana.com

Aftermarket

John Ramsey
Sales Manager – Aftermarket

+61 425 777 915
john.ramsey@dana.com

Jagath Dharmabandu
Program Manager - Aftermarket

+61 419 499 436
jagath.dharmabandu@dana.com

Michael Parker
Business Development Manager

+61 418 962 060
michael.parker@dana.com



brevini

Premium Spicer Life® Series U-Joints

Built for the Long Haul

Spicer Life Series® u-joints are head and shoulders above the rest. Superior u-joint design, better lubrication, and a premium sealing package work together to deliver a 30% enhancement to bearing life, versus the competition. While the precision heat-treating, case-hardening, and journal grinding processes are similar to the Spicer® 10 Series u-joints, the Spicer Life® u-joints include the following upgrades:

Journal Cross

Engineered with a cold-formed body to ensure better wear and overall strength.

Bearing Cups

Heat-treated for strength; precision-ground and case-hardened for durability.

Thrust Washers

Friction and heat can cause premature failure. The Spicer thrust washer eliminates metal-to-metal contact/friction, prevents wear, and lowers the overall operating temperature.

Premium Viton® Multi-Lip Sealing Package

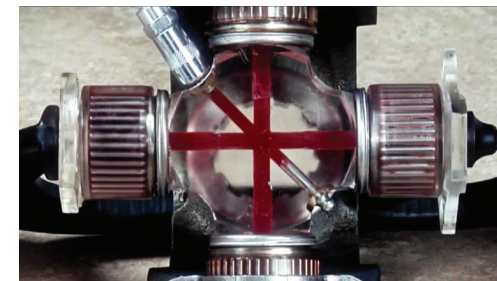
This premium sealing package includes a Viton® multi-lip seal, garter spring, seal guard, and a needle bearing spacer. Keeping the grease in and contaminants out is the key to maximizing u-joint bearing life.

Seal Guard

High-impact material for optimal first-level protection against contaminants.

Lubrication Options

Get longer life and lower maintenance costs for your u-joint with two lubrication options. Choose from a greaseable u-joint or a service-free, lubed-for-life u-joint. Periodic inspection is always recommended.



Spicer® U-Joints are the Standard for Premium Performance in the Driveshaft Market

The proof is in the craftsmanship – and the performance. The seal and bearing surfaces on Spicer u-joints are precision ground to help extend the life of the part. Not only that, every Spicer product undergoes extensive OE engineering and field testing – including the fatigue testing detailed in the adjacent chart – to make sure they're up to the rigors of the road. That's what makes Spicer the most trusted name in the industry for more than 110 years.

Maintenance-Free Performance for Your Commercial Vehicles

Avoid noise and vibration with Spicer XC™ centre bearings, which are designed to ensure a longer life for your vehicle. You'll enjoy improved performance with a centre bearing that's lightweight and easy to install.

Improved Performance

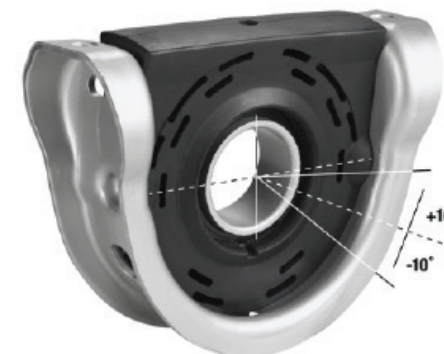
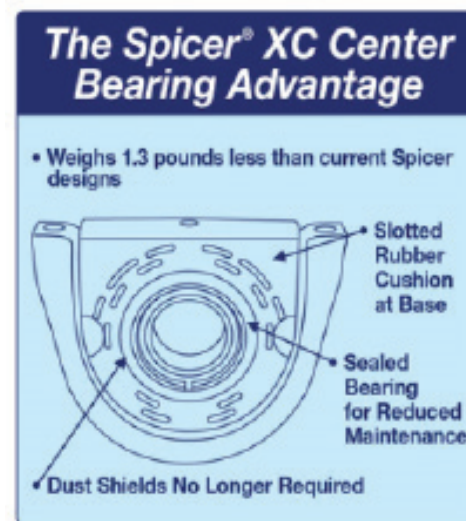
- Maintenance-free factory-sealed bearing and double-lip seal configuration decreases contamination and extends life
- Innovative design allows for angle fluctuations of ± 10 degrees
- Advance technology elastomer material decreases levels of noise and vibration

Weight Reduction

- Approximately 1.3 pounds lighter than previous centre bearings

Simplified Installation

- Elimination of dust shields due to NEW sealed bearing technology
- Eliminates the need for multi-hanger bracket and cross member configurations



Get better performance and optimal alignment with Spicer XC centre bearings

New Number	Current	New Rubber Style
5003323	210661-1X	Semi-Slotted
	210987-1X	Semi-Slotted
	212066-1X	Semi-Slotted
	212129-1X	Semi-Slotted
5003326	210875-1X	Solid
	210888-1X	Solid
5003628	212155-1X	Semi-Slotted

Connection Variants

Attaching driveshafts to various transmissions and axle assemblies calls for different types of connections. The following types (ISO standard) are available:

Positive engagement:

- X-serration (XS) – corresponding to ISO 8667 for gearbox flanges and ISO 12667 for driveshaft flanges
- Friction type – DIN and SAE connection on request
 - DIN, corresponding to ISO 7646
 - SAE, corresponding to ISO 7647

The XS flange is the preferred flange because of its technical and economical advantages including:

- International standardisation
- Fewer variants
- Form fitting
- Clearly defined mounting position
- Less time required for assembly
- Simplified bolting



Spicer Transmission Slip Yokes offer OEM quality at a reasonable price.

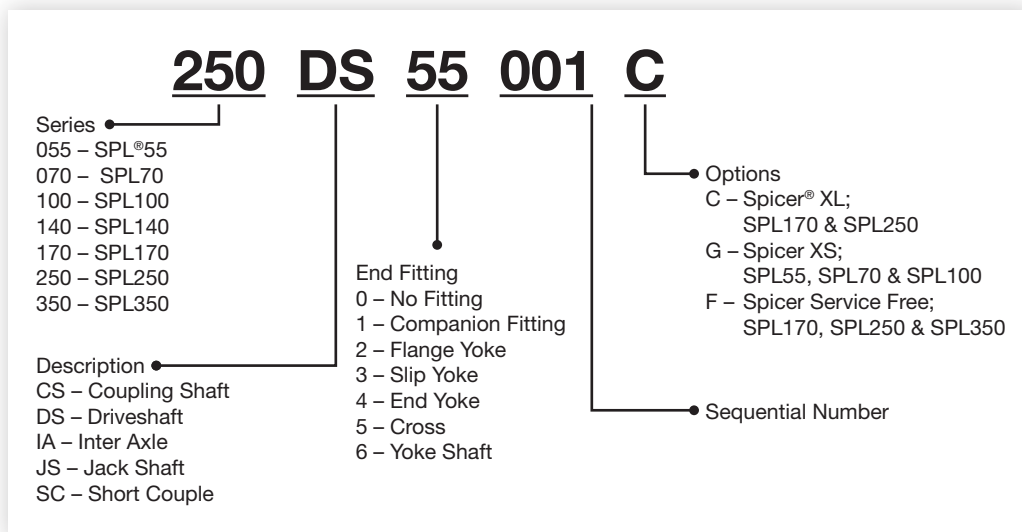
Driveshafts

General Information – Heavy- and Medium-Duty

At Dana, we offer a complete line of light-duty, medium-duty, and specialty driveshaft products for every commercial-vehicle application. As a world leader in driveshaft technology, our innovative, industry-leading products provide the most efficient, reliable, and durable performance on the road.

- Robust, Patented driveshaft technologies
- High-Power Density™ (HPD™) provides more strength
- Lighter weight than competitive products
- Service-free designs available for reduced maintenance

Nomenclature - Driveshaft



Spicer Life® Series Operating Parameters

Series	Max Momentary Joint Angle	Standard Slip	Rotating Diameter of Shaft	Rotating Diameter of End Yoke
SPL140	25°	110mm 4.33in	160mm 6.30in	174mm 6.22in
SPL170				
SPL170 I/A		150mm 5.91in		
SPL250	25°	110mm 4.33in	185mm 7.28in	193mm 7.60in
SPL250 HD				
SPL250 I/A	45°	150mm 5.91in		
SPL350	15°	110mm 4.33in	206mm 8.11in	219mm 8.62in
SPL350 HD				
SPL350 Lite				
SPL350 Lite HT				

Journal Cross and Bearing Kits

Series	U-Joint Kit for Quick Disconnect™ End Yoke
SPL140	SPL140X
SPL170	SPL170-4X
SPL170SF	SPL170-SF4X
SPL250	SPL250-3X
SPL250SF	SPL250-SF3X
SPL350	SPL350X
SPL350SF	SPL350SF3X

SF = Service Free

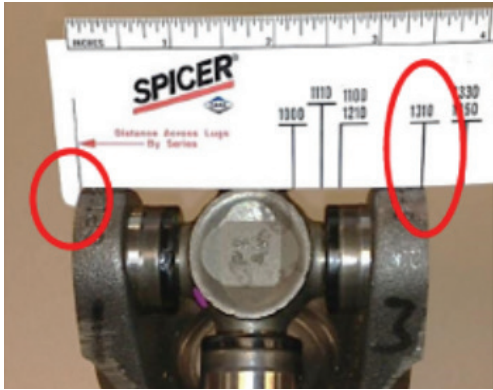
DANA Universal Joints

Vehicle Type	Driveshaft Series	Spicer® Service Kit (Greaseable unless noted)	Spicer Life® OE Kit (Greaseable)	Spicer Life® OE Kit (Non-Greaseable)
Light and Medium Vehicles	1210	5-443X	-	-
	1310	5-153X	5-1310-1X**	5-1310X
	1310 aluminum	-	-	5-3613X†
	1310/7260*	-	-	5-788X
	1310 (Wheel Joint)	-	-	5-760X
	1310SPEC	5-1201X	-	5-7439X
	1330	5-212X	5-1330-1X**	5-1330X
	1330 aluminum	-	-	5-3614X†
	1330SPEC	5-1204X	-	5-7438X
	1330/S44*	5-212X	-	5-793X
	1330/7290*	-	-	5-7437X
	1350	5-178X	5-1350-1X**	5-1350X
	1350 (Wheel Joint)*	-	-	5-7166X
	1350/SPL30 aluminum	-	-	5-3615X†
	1350 x S44*	5-3205X	-	-
	1350 AAM*	5-3208X***	-	-
	1410	5-160X	5-1410-1X**	5-1410X
	1410 aluminum	-	-	5-3616X†
	1415 AAM*	5-3207X***	-	-
	1480/SPL55	5-188X	SPL55-1X	SPL55X
	1480/SPL55 (Wheel Joint)*	-	SPL55-4X	SPL55-3X
	1415 AAM*	5-3206X***	-	-
	1480 AAM (Wheel Joint)*	-	-	5006813
	1550/SPL70	5-155X	SPL70-1X	SPL70X
	SPL70 (Wheel Joint)*	-	SPL70-4X	-
	7260*	5-1306X	-	5-789X
7290*	5-1309X	-	5-811X	
S44*	5-3147X	-	5-795X	

Vehicle Type	Driveshaft Series	Spicer® Service Kit (Greaseable unless noted)	Spicer Life® OE Kit (Greaseable)	Spicer Life® OE Kit (Non-Greaseable)
Commercial Vehicles	SPL90/SPL100	-	SPL100-1X	-
	SPL140	-	SPL140X	-
	SPL170	-	SPL170X-4X	SPL170X-SF4X
	SPL250	-	SPL250X-3X	SPL250X-SF3X
	SPL350	-	SPL350X	SPL350SFX
	1610 (Full Round)	5-279X	-	-
	1610 (Half Round)	5-674X	-	-
	1650	5-165X	-	-
	1710 (Full Round)	5-280XB	-	-
	1710 (Half Round)	5-675X	-	-
	1760 (Full Round)	5-407X	-	-
	1760 (Half Round)	5-677X	-	-
	1800 (Full Round)	5-124X	-	-
	1810 (Full Round)	5-281XB	-	-
	1810 (Half Round)	5-676XB	-	-
	1880 (Full Round)	5-308X	-	-

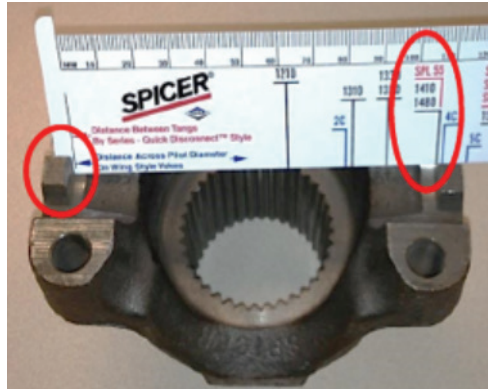
DANA Universal Joints

Full Round Yokes



- Measure from the outside of the yoke ears
- Read result on opposite ear

Half Round Yokes



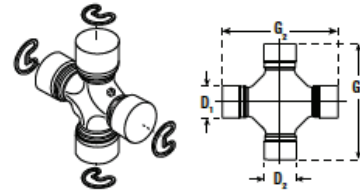
- Measure from the inside of the tab
- Read result on opposite tab

Wing Style Yokes

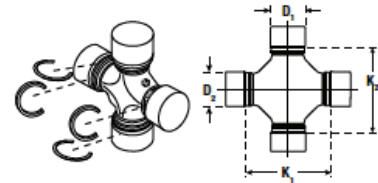


- Measure from the inside of the pilot diameter
- Read result on opposite pilot diameter

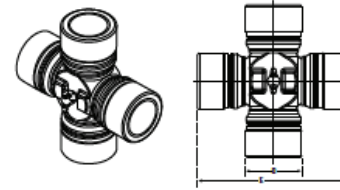
Outside Snap Rings



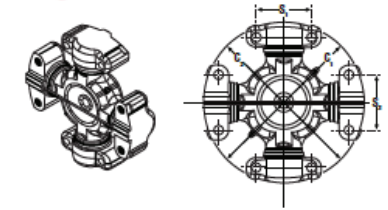
Inside Snap Rings



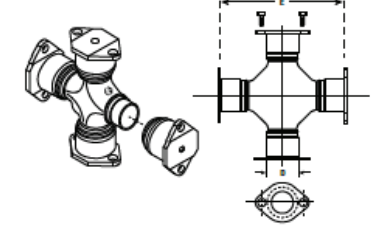
Spicer Life Series® (SPL® 140, 170, 250, and 350)



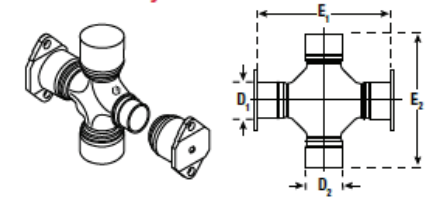
Wing™ Series



Bearing Plate Style



Half Round Style



Driveshaft Series

1310 Driveshaft Series



Part Description	DANA Image	DANA Part Number	Comparison Part Number	Comments
U-Joint Kit		5-7439X	CP1201X	Full Round
		5-134X	CP134X	Full Round
		5-153X	CP153X	Full Round
		5-788X	CP353X	Full Round
Slip Yokes		2-3-128KX	131N3128KX	
		2-3-8001KX	131N38001KX	
		2-3-8021KX	131N38021KX	
Tube Shafts		2-40-1031	131N401031	
		2-40-1221	131N401221	
		2-40-1701	131N401701	
		2-40-1711	131N401711	
		2-40-1771	131N401771	
		2-40-1851	131N401851	
Flange Yoke		2-2-329	131N2329	
		2-2-479	131N2479	
		2-2-939	131N2939	
Tube Yokes		2-28-277	131N28277	
		2-28-307	131N28307	
		2-28-357	131N28357	
		2-28-367	131N28367	
		2-28-397	131N28397	
		2-28-427	131N28427	
End Yokes		2-4-473	131N4473	
		2-4-533	131N4533	

1330 Driveshaft Series



Part Description	DANA Image	DANA Part Number	Comparison Part Number	Comments
U-Joint Kit		5-1204X	CP1204X	Full Round
		5-134X	CP134X	Full Round
		5-213X	CP213X	Full Round
Slip Yokes		2-3-8041KX	133N38041KX	
Tube Yokes		2-28-1177	133N281177	
		2-28-1697	133N281697	
		2-28-1707	133N281707	
		2-28-1717	133N281717	

1350 Driveshaft Series



Part Description	DANA Image	DANA Part Number	Comparison Part Number	Comments
U-Joint Kit		5-178X	CP178X	Full Round
Slip Yokes		3-3-1501KX	135N31501KX	
		3-3-488KX	135N3488KX	
		3-3-598KX	135N3598KX	
Midship Tube Shafts		3-53-1351	135N531351	
Flange Yoke		3-2-119	135N2119	
Tube Yokes		3-28-427	135N28427	
		3-28-47	135N2847	
		3-28-57	135N2857	

Driveshaft Series

1410 Driveshaft Series



Part Description	DANA Image	DANA Part Number	Comparison Part Number	Comments
U-Joint Kit		5-160X	CP160X	Full Round
Slip Yokes		3-3-118KX	141N3118KX	
		3-3-508KX	141N3508KX	
Midship Tube Shafts		3-53-1361	141N531361	
Flange Yoke		3-2-159	141N2159	
		3-2-429	141N2429	
Tube Yokes		3-28-367	141N28367	
		3-28-97	141N2897	
End Yokes		3-4-1841-1	141N41841	

1480 Driveshaft Series



Part Description	DANA Image	DANA Part Number	Comparison Part Number	Comments
U-Joint Kit		5-188X	CP188X	Full Round
Slip Yokes		3-3-1601KX	148N31601KX	LD & MD Driveshaft Style
Flange Yoke		3-2-479	148N2479	Snap Ring Design
Tube Yokes		3-28-537	148N28537	
		3-28-567	148N28567	

1550 Driveshaft Series



Part Description	DANA Image	DANA Part Number	Comparison Part Number	Comments
U-Joint Kit		5-155X	CP155N	Full Round
Slip Yokes		4-3-1241KX	155N31241X	LD & MD Driveshaft Style
Flange Yoke		4-2-669	155N2669	Snap Ring Design
Tube Shafts		4-40-721	155N40721	

Do you know?

How to identify failure and probable cause

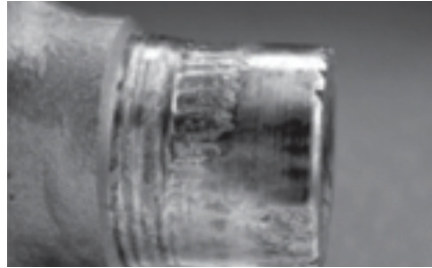
Universal Joints



End Galling

- Excessive u-joint operating angles
- Improper assembly procedures
- Lack of lubrication (improper maintenance)

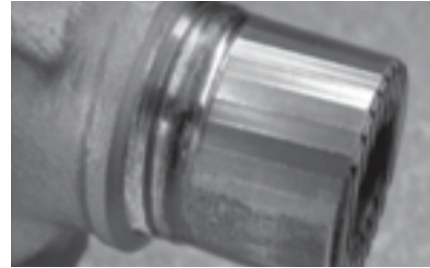
Universal Joints



Spalling

- Water contamination
- Improper lube type
- Lubrication failure

Universal Joints



Brinelling

- Excessive continuous torque loads
- Seized slip yoke splines
- Excessive driveline angles
- Sprung or bent yoke
- Over tightened 'U' Bolts

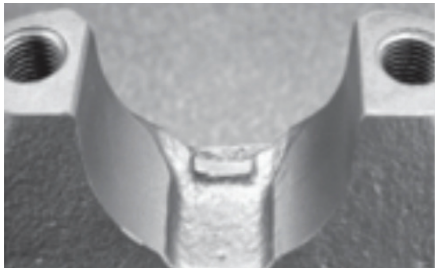
Tubing



Broken Weld

- Shock loads
- Improper welding procedures
- Excessive vibration

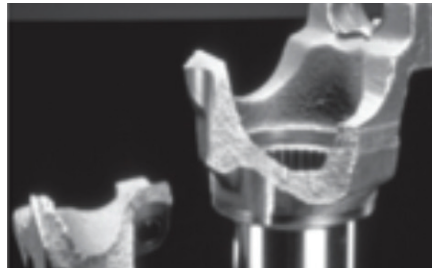
Yokes



Broken Tang Half Round

- Improper bearing retainer bolt torque
- Improper installation
- Strap was re-used instead of replaced

Yokes



Fractured Yoke

- Excessive torque loads
- Shock loads
- Improper application
- U-joint kit failure

Driveshaft Series

1610 Driveshaft Series



Part Description	DANA Image	DANA Part Number	Comparison Part Number	Comments
U-Joint Kit		5-279X	M279X	Full Round
		5-674X	M674X	Half Round
Slip Yokes		5-3-108KX	16N3108X	HD Driveshaft Style
		5-3-2261KX	16N32261X	HD Driveshaft Style
		5-3-288KX	16N3288X	HD Driveshaft Style
Tube Shafts		5-40-1011	16N401011	
Midship Tube Shafts		5-53-141	16N53141	Outboard Slip Yokes
Flange Yoke		5-2-279	16N2279	Bearing Plate Design
		5-2-629	16N2629	Bearing Plate Design
Tube Yokes		5-28-627	16N28627	
End Yokes X = Slinger			5-4-1721	16N41721
		5-4-4961-1	16N43321	
		5-4-4441X	16N44441X	
		5-4-4451X	16N44451X	
		5-4-4841-1X	16N448411X	
		5-4-6251	16N46251	
		5-4-6321-1	16N463211	
			16NY38-12A	
	16TYS32-76			
	16TYS32-76A			
Bearing Strap Kit		5-70-28X	KT16SB	

1710 Driveshaft Series



Part Description	DANA Image	DANA Part Number	Comparison Part Number	Comments
U-Joint Kit		5-280XB	M280X	Full Round
		5-675X	M675X	Half Round
		6-3-2671KX	17N-3-2671X-MXL	
Slip Yokes		6-3-3441KX	17N-3-2401X-MXL	HD Driveshaft Style
		6-3-3441KX	17N-3-2401X-MXL	
		6-3-2651KX	17N-3-2651X-MXL	HD Driveshaft Style
Tube Shafts		6-40-521	17N40521	
		6-40-541	17N40541	
Midship Tube Shafts		6-53-201	17N53201	Companion Flange or End Yoke Design
		6-53-311	17N53311	Companion Flange or End Yoke Design
Flange Yoke		6-2-749	17NF1	Bearing Plate Design
Tube Yokes		6-28-137	17N28137	
		6-28-347	17N28347	
Yoke Shafts		6-82-1091-12	17N8211712	

Do you know?

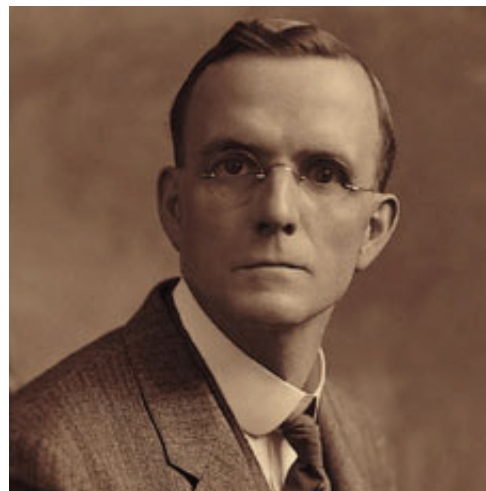
Forefathers of Dana

In 1904, an engineering student named Clarence Spicer left Cornell University to launch a new business in the vacant corner of a New Jersey factory. While still a student, Spicer had earned a patent for his groundbreaking design of the first practical universal joint to power an automobile. Spicer's innovation would quite literally unchain the automobile.

Founded on Spicer's designs, and fuelled by the business acumen of attorney, politician, and financier Charles Dana, Dana Holding Corporation emerged from these humble beginnings as one of the world's most influential automotive suppliers. The company proceeded to expand its product array, technological expertise, and geographic scope throughout the century. Along the way, Dana Holding Corporation also fostered a progressive, people-oriented culture that has added a unique dimension to the products and services the company provides.

Dana products have helped to drive history's greatest vehicles from the Model T and the World War 11-era Jeep®, to London taxicabs, 18-wheel rigs, giant earth-moving machines, and every car on the NASCAR® racing circuit.

Today Dana Holdings is a world leader in the supply of driveline products (axles, drive shafts, and transmissions), power technologies (sealing and thermal-management products), and genuine service parts for light and heavy-duty vehicle manufacturers. The company's customer base includes nearly every major vehicle manufacturer in the global automotive, commercial vehicle, and off-highway markets. Based in Maumee, Ohio, the company employs approximately 30,100 people in 33 countries and reported 7.2 billion in sales for 2017.



Clarence Spicer



Charles Dana

Driveshaft Series

1710 Driveshaft Series



Part Description	DANA Image	DANA Part Number	Comparison Part Number	Comments
		6-4-1981	17N41981	
		6-4-1991	17N41991	
		6-4-1471	17N42271	
		6-4-2381	17N42381	
		6-4-3221	17N43221	
		6-4-3241	17N43241	
		6-4-3291	17N43291	
		6-4-4091	17N44091	
		6-4-4291X	17N44291X	
		6-4-4301X	17N44301X	
		6-4-4361X	17N44361X	
		6-4-4481X	17N44481X	
		6-4-4551	17N44551	
		6-4-4601	17N44601	
		6-4-4741X	17N44741X	
		6-4-4771-1	17N447711	
		6-4-5061X	17N45061X	
		6-4-5111X	17N45111X	
		6-4-5451	17N45451	
		6-4-5461X	17N45461X	
		6-4-5481X	17N45481X	
		6-4-5501	17N45501	
		6-4-5521	17N45521	
		6-4-5961X	17N45961X	
		6-4-6021X	17N46021X	
		6-04-21	17N46321	
		6-4-6331	17N46331	
		6-4-6391-1X	17N463911X	
		6-4-6391X	17N46391X	
		6-4-5101X	17N46411X	
		6-4-6421X	17N46421X	
		6-4-6451	17N46451	
		6-4-6481	17N46481	

End Yokes
X = Slinger

Part Description	DANA Image	DANA Part Number	Comparison Part Number	Comments
		6-4-6871X	17N46871X	
		6-4-6891X	17N46891X	
		6-4-6921X	17N46921X	
		6-4-6931X	17N46931X	
		6-4-6941X	17N46941X	
		6-4-6951X	17N46951X	
		6-4-6961-1X	17N469611X	
		6-4-6961X	17N46961X	
		6-4-7181-1X	17N471811X	
		6-4-7181X	17N47181X	
		6-4-7541	17N47541	
		6-4-7621-1	17N476211	
		6-4-7641-1X	17N476411X	
		6-4-7851X	17N47851X	
		6-4-8511X	17NYS2866A	
		6-4-8531X	17N48531X	
		6-4-8551X	17N48551X	
		6-4-9001X	17N49001X	
		6-4-9031X	17N49031X	
		6-4-9041X	17N49041X	
		6-4-6401	17NYS32-100	
		6-4-4971	17NYS32-99	
		6-4-6381X	17NYS32-99A	
		6-4-7651X	17NYS3418A1	
		6-4-9181X	17NYS3419A1	
			17NYS34-20	
			17NYS38-17A2	
		6-4-7771X	17N47771X	
		6-4-8331-1X	17TYS3260A	
		6-4-1981-1	17TYSC3154	
		6-4-4601-1	17N446011	
Bearing Strap Kit		6.5-70-18X	KT17SB	

Driveshaft Series

1760 Driveshaft Series



Part Description	DANA Image	DANA Part Number	Comparison Part Number	Comments
U-Joint Kit		5-677X	M677X	Half Round
		5-407X	M407X	Full Round
End Yokes		6-3-4-331-1X	176N43311X	
		6-3-4-181X	176N4181X	
		6-3-4-1031	176NYS38-14	
		6-3-4-781-1X	176N47811X	
Bearing Strap Kit		6-5-70-18X	KT17SB	

1810 Driveshaft Series



Part Description	DANA Image	DANA Part Number	Comparison Part Number	Comments
U-Joint Kit		5-324X	CP18N-96	Conversion – 9C Series
		5-281XB	M281X	Full Round
		5-676X	M676X	Half Round
Weld Yoke		6-5-28-117	18N28117	Standard
		6-5-28-127	18N28127	Heavy Duty
Splined End Yokes		6-5-4-2341X	18N42341X	
		6-5-4-2701	18N42701	SSHD Late
		6-5-4-2781	18N42781	
		6-5-4-3201	18N43201	RT180-185-380
		6-5-4-3021	18N43021	Eaton / Spicer
		6-5-4-3251	18N43251	VARIOUS
		6-5-4-3371	18N43371	RT140

1810 Driveshaft Series (continued)



Part Description	DANA Image	DANA Part Number	Comparison Part Number	Comments
Splined End Yokes		6-5-4-3491	18N43491	RT14613/14615/14715/15613/14615/16718B/16609/16613/16618/18718B AAnd various other models With 3.750" Hub Seal
		6-5-4-3721	18NYS3827	
		6-5-4-4631	18NYS45	RT14/15/16/18/20 SERIES
Slip Yokes		6-5-3-1351KX	18N31351X-MXL	
		6-5-3-1371KX	18N31371XMXL	
		6-5-3-1431KX	18N31431XMXL	
Midship Tube Shafts		6-5-53-51	18N5351	
		8-53-41	BSS3610	
		6-5-53-171	18N53171	
		6-5-53-91	18N5391	
Tube Shafts		8-40-91	PS481619	Long
Stub		6-5-40-191	18N40191	
		6-5-40-201	18N40201	
End Yokes		6-5-4-3221X	18N43221X	
		6-5-4-3281X	18N43281X	
		6-5-4-2491X	18N43381X	
		6-5-4-3551X	18N43551X	
		6-5-4-3561X	18N43561X	
		6-5-4-3581X	18N43581X	
		6-5-4-3731X	18N43731X	
		6-5-4-3921X	18N43921X	

Do you know?

Dana sells grease and oils

Spicer is now selling ultra-premium synthetic grease is available in 10-packs of 14-oz. tubes (SPL 1051) or 1-gallon tubs (SPL 1052). It's part of a complete line of lubricants manufactured to meet the exact specifications of genuine Spicer products.

ALSO:

Spicer 80W-140 :

- Delivers extended drain intervals for vocational trucks
- Provides protection and performance in front and rear driven axle gear boxes where API GL-5 lubricants are specified
- Contains an anti-wear additive
- Contains rust, oxidation, and corrosion inhibitors -Protect bearings
 - Reduce component wear
 - Promote longer gear and lubricant life



Driveshaft Series

1810 Driveshaft Series



Part Description	DANA Image	DANA Part Number	Comparison Part Number	Comments
		6-5-4-1891	18N41891	Full Round
		6-5-4-1891-1	18N418911	Half Round
		6-5-4-2361X	18N42361X	Full Round
		6-5-4-2531X	18N42531X	
		6-5-4-2271X	18N42271X	
		6-5-4-2711X	18N42711X	Splined Holes
		6-5-4-3021	18N43021	SP2.635-20B
		6-5-4-3201-1	18N432011	Half Round
		6-4-3221-1X	18N432211X	
		6-5-4-3441	18NYS38-15	Full Round
		6-5-4-3491-1	18N434911	Half Round
		6-5-4-3561-1X	18N435611X	Half Round
			18NYS34-3A1	
		6-5-4-3591-1	18N435911	
		6-5-4-3691X	18N43691X	
		6-5-4-3731-1X	18N437311X	Half Round
		6-5-4-3731-1X	18TYS3827A	SP2.374-46H
		6-5-4-4351X	18N44351X	SP2.274-44B
		6-5-4-4571X	18NYS3620A	
		6-5-4-4571-1X	18N445711X	Half Round
		6-5-4-4611X	18N44611X	
		6-5-4-3731-1X	18TYS38-27A	With Splined Holes (inc. Slinger)
			18N439211X	2.390-46IN 6.0HR
		6-5-4-4621X	18N43931	
Bearing Strap Kit		6-5-70-18X	KT17SB	

End Yokes
X = Slinger



SPL 170 Driveshaft Series



Part Description	DANA Image	DANA Part Number	Comparison Part Number	Comments
U-Joint Kit		SPL170-SF4X	US170X	SPL170
		170-4-591-1X	170TYS383A1	SPL170
End Yokes X = Slinger		170-4-611-1X	170TYS381A	SPL170
		170-4-661-1	170TYS321	SPL170
		170-4-671-1X	170TYS321A	SPL170
		170-4-721-1X	170TYS384A	SPL170
		170-4-741-1X	170TYS382A	SPL170
Tube Yoke		170-28-27	170N2827	SPL 170 Quick Disconnect

SPL 250 Driveshaft Series



Part Description	DANA Image	DANA Part Number	Comparison Part Number	Comments
U-Joint Kit		SPL 250-SF3X	US250X	SPL 250
		250-4-21-1	250N4211	SPL 250 Quick Disconnect
End Yokes		250-4-271-1	250N42711	SPL 250
		250-4-351-1X	250TYS382A	SPL 250
		250-4-291-1X	250TYS381A	SPL 250
Tube Yoke		250-28-17	250N2817	Weld Yoke SPL 250

Do you know?

Dana sells service tools?



Spicer Anglemaster SPI400 Spicer Anglemaster SPI400

Pro 360 Anglemaster II with case DANA logo in red.
Related adapter tools and accessories sold separately.
Pro 360 Anglemaster II with case DANA logo in red.
Related adapter tools and accessories sold separately.



Adapter Kit --SPIKIT500 Adapter Kit --SPIKIT500

Contains: SPI-CP501 - Light & Medium Universal Joint
SPI-CP502 - Heavy Duty Half-Round Yoke SPI-CP160 -
Heavy Duty Full-Round End Yoke



14" Lug Ruler - SPICP455

Centre Bearings and Universal Joints

Centre Bearings



Part Description	DANA Image	DANA Part Number	Comparison Part Number	Comments
Bearing Centre Assy Rub		210088-1X	CB2100881X	1310/1330/ 1350/1410
Bearing Centre 141N		210391-1X	CB2103911X	1410/1480/ 1550/1550HR
Bearing Centre 141N		210433-1X	CB2104331X	1410/1480/ 1550/1550HR
Centre Assy		210084-2X	CB2100842X	1480/1550/ 1610/1710/ 1880/SPL70
Bearing Centre 17N		210121-1XB	CB2101211XSA	SPL140/ 1610/1710
Bearing Centre Slotted		5003323XB	CB2106611XSA	RPL25
Bearing Centre Solid		5003326XB	CB2108751XSA	RPL25/176N/ 17N/18N/85WB/ 92N/RPL25

Fast Moving Universal Joints



Part Description	DANA Image	DANA Part Number	Comparison Part Number	Comments
U-Joint Kit		5-279X	M279X	Full Round
		5-674X	M674X	Half Round
		5-280XB	M280X	Full Round
		5-675X	M675X	Half Round
		5-677X	M677X	Half Round
		5-407X	R407X	Full Round
		5-281XB	M281X	Full Round
		5-676X	M676X	Half Round

Universal Joints - Dana



Part Description	DANA Image	DANA Part Number	Comparison Part Number	Comments
U-Joint Kit		5-3147X	CP3147X	3R Series
		5-92X	CPL6R50	L6 Series
		5-105X	CP105X	1110 Series
		5-103X	CP103X	1000
		5-789X	CP1306X	7260
		5-170X	CP170X	1000
		5-9001X	CP92NHWD	9C/1820
			CP950N	950N

Do you know?



10 Series™ Driveshaft Components Nomenclature





This document is intended for nomenclature purposes only and is not to be used for assembly instructions. It does not include every possible scenario or product name. Parts pictured are for reference only and are not intended to be all-inclusive. Alignment of yoke ears are not representative of all forms of phasing. Yoke ears are phased per Original Equipment Manufacturers requirements.

Warning: Rotating shafts can be dangerous. You can snag clothes, skin, hair, pants, etc. This can cause a serious injury or death. Do not work on a shaft (with or without a guard) when the engine is running.

Genuine Spicer® Driveshaft Components –there is no substitute.

When it comes to keeping your vehicle up and running, why take a risk with unproven knock-off replacement parts? Genuine Spicer® service parts are the same as the original equipment parts, adhering to rigid manufacturing specifications for performance and reliability. Unlike non-genuine parts, our wide range of Spicer® driveshafts provides less drivetrain vibration, improved balance and stiffness, and more lateral protection against environmental contaminants. It all adds up to longer-life parts for maximum time on the road and minimum operating costs. Proving the best replacement part is always the original.


Demand the best . . . Demand genuine Spicer!



Miscellaneous



Miscellaneous

Part Description	DANA Image	DANA Part Number	Comparison Part Number	Comments
Slingers		231022	DEFR485	1610/1710/ 1760/1810
		230909	DEFR421	SPL90/1410/ 1480/1550/ 1610/1650/1710
		231028	DEFR482	1550/1610/ 1710/1760/1810
		231599	DEFR4713	SPL140/1610/ 1710/1810
		231101	DEFR477	SPL140/ 1610/1710
		231102	DEFR504	SPL170/ 1610/1710
		231359	DEFR507	SPL90/SPL140/ SPL170/1550/ 1610/1710/
		231179	DEFR541	SPL170/SPL250/ 1610/1710/ 1460/1810/
		231013	DEFR552	1610/1710/ 1760/1810/
		231047	DEFR562	1760/1810
		231803	DEFR567	SPL90/SPL140/ SPL170/ SPL250/1610/ 1710/1810
Dust Caps/ Yoke		6-3-8618	SERUR334	
Hardware Kit		5007417	R980001	SPL140/SPL170/ SPL250
Kit Strap & Capscrew		3-70-28X	KT122	1350/1410
Kit Service	Strap & Bolts	6-5-70-18X	KT17SB	1710/1810

Part Description	DANA Image	DANA Part Number	Comparison Part Number	Comments
Kit Dust Cap/Wshr 1350/1410 RD		D3A	ND3A	1350/1410
Kit Dust Cap/Wshr 1410/1480 RD		D3H	DC148N1	1410/1480
Locknut		231502	1227Z936	1550/1610/1650/ SPL90/1710/1760/ 1810/1880
Round Tubing		36-30-102- 10000	RT4597108	
U-Bolt Kit - 1260/1330 U/ Joint		2-94-28X	KT116	1210/1310/1330 - 2 U-bolts and 4 Nuts each
U-Bolt Kit - 1350/1410 U/ Joint		3-94-18X	KT117	1350/1410
U-Bolt Kit -1480/1550 U/ Joint		3-94-28X	KT118	1480/1550
Washer - Special		230123-6	WAR211	1710/HD/1760/ 1810/SPL70/ SPL100/SPL140/ SPL170/SPL250/ 1810 BP

Spicer Bearing Strap and U-Bolt Kits

For off-road application, many drivers choose traditional u-bolt attachments. Spicer continues to offer the following yokes to meet off-road requirements.

2-4-5091
2-4-5341
2-4-5441
2-4-2611X
2-4-3801X
2-4-5311X
2-4-8091X



U-Bolt Kit numbers available are:

Series	Part Number
1280-1330	2-94-28X
1350-1410	3-94-18X
1480-1550	2-94-28X

For those who prefer bearing straps, we offer the following Bearing Strap Kits:

Series	Part Number
1210-1330	2-70-18X
1350	3-70-28X
1410	3-70-28X
1480-1550	3-70-38X
3R/S44	3-70-48X

If you have any questions regarding the ordering methods, please contact your Spicer products sales representative. Dana Aftermarket Group reserves the right to make price adjustments at any time. We appreciate your business!

OE-Quality Service Parts for Automotive Driveshafts

Spicer universal joints and end yokes deliver top performance and value for your driveshaft. Count on Spicer bearing strap and U-bolt kits to keep it all together. These strap and U-bolt kits are manufactured to the same high standards you've come to expect from the most reliable name in driveshaft parts.

Superior Automotive U-Bolt Kits With Bearing Straps

Strength and security—that's what you get with Spicer bearing strap and u-bolt kits. With components designed for a precise fit and excellent fatigue resistance they are a dependable replacement for your vehicle's worn or damaged original parts.

Spicer automotive u-bolts and bearing straps are the best way to ensure that your u-joints and end yokes stay secure. Like all genuine Spicer parts, Spicer u-bolt kits are engineered to deliver original-equipment quality, as well as the following features:

- Secure fit for reduced vibration and noise
- Premium components that are durable and deliver reliable retention
- Ideal replacement for worn or damaged original parts



Dana Australia
8 Hudson Court, Keysborough VIC 3173
Phone: 1300 00 DANA
www.dana.com.au

Copyright Dana Australia 2017
All rights reserved. Dana Australia.
Printed in Australia, March 2017