



CorelDRAW[®]
GRAPHICS SUITE 2019

Dare to design differently

Say hello to CorelDRAW[®] GRAPHICS SUITE 2019

CorelDRAW is celebrating its 30th birthday and we've decided to mark the event in a big way! With CorelDRAW Graphics Suite 2019, we're dramatically extending our reach with a new Windows version, plus an all-new professional powered suite for macOS, and the new CorelDRAW.app™ that delivers on-the-go graphics creation.

Designers finally have a true, professional graphic design contender available on their platform of choice.

We couldn't be more excited to have you explore our latest release. Designers on Mac can now experience a professional-grade suite built specifically for their favorite platform. The CorelDRAW applications reflect the elements users love about their Mac with a native look and feel that's authentic and bound to inspire creativity.

Graphics pros on Windows will also find a unique environment built just for them with new creative options. Features making their debut across both versions of the suite include Non-Destructive Effects, powerful new Objects management, pixel-perfect workflow preci-

sion, speed boosts, and more. And true to our heritage, CorelDRAW Graphics Suite 2019 supports the latest Windows 10 advances.

Included with either suite, the new CorelDRAW.app rounds out the graphic design workflow.

Whether they're working on graphics, layout, illustration, photo editing, digital, or print projects, designers can choose CorelDRAW to achieve high-quality results, every time:

Be in control: Work faster, smarter, and with more certainty. Benefit from more control over your objects, layers, and pages.

Be creative: New, high quality templates and non-destructive effects allow you to test the limits of great design.

Be efficient: Achieve unsurpassed productivity with performance enhancements, increased customizability, and streamlined navigation.



NEW PLATFORMS, MORE OPTIONS

WINDOWS. MAC. WEB. WHEREVER.



Mark Anthony J. Guzman

Optimized for Windows 10

- Create quick adjustments using touch or a stylus in the Touch workspace.
- Work quickly and efficiently with Windows Real-Time Stylus pen-compatible tablets, such as the Microsoft Surface.
- Enjoy support for wheel devices, such as the Microsoft Surface Dial.

Designed from the ground up for Mac

- Leverage the time-saving features of the Touch Bar on MacBook Pro. Not only does this multitouch display give quick access to OS-level controls, but also to functionality specific to CorelDRAW, such as layout settings, text controls, and more.
- Enjoy support for macOS Mojave Dark Mode, a darker color palette for all windows, views, menus, and controls.
- CorelDRAW Graphics Suite for Mac delivers native Mac applications for a unique design experience.

Don't let your desk limit your imagination

Turn great ideas into amazing designs, the moment they arise with CorelDRAW.app. New as part of CorelDRAW Graphics Suite 2019, this powerful web app enables you to access your work whenever and wherever it's convenient for you. Simply sign into CorelDRAW.app when you want to show a client a concept from a 2-in-1 or other mobile device, or create remotely when you're on the go.

DESIGN ANYWHERE WITH CORELDRAW GRAPHICS SUITE

Find all the professional vector illustration, layout, photo editing, and design tools you need to work faster, smarter, and in more places with this superior graphic design software.



Mikhail Buzin



GRAPHICS & ILLUSTRATION

Use the powerful vector illustration tools in CorelDRAW® to turn basic lines and shapes into complex works of art. Create curves with many versatile shaping and drawing tools. The industry-first, AI-based LiveSketch™ tool offers the freedom to design using hand drawn vector curves right from the get go.



PAGE LAYOUT

Find all the tools you need to create layouts for brochures, multi-page documents and more. Reserve a place for text and graphics, or use the Placeholder Text tool to mock up a page and see how the text will look.



PHOTO EDITING

Retouch and enhance your photos with PHOTO-PAINT's powerful layer-based photo editing tools. Adjust color and tone, remove imperfections, correct perspective and more. Use AfterShot™ HDR to create stunning High Dynamic Range photos from your RAW images.



TYPOGRAPHY

Arrange type beautifully with a complete set of typography tools. Add effects to text like block shadows and contours, fit text to paths, and wrap text around objects. Enjoy OpenType typography features such as ligatures, ornaments, small caps, swash variants, and more.

DARE TO DESIGN DIFFERENTLY

Boldly express yourself with a comprehensive suite of professional graphics tools.



Zaky Mufti Said Ramadhen

FONT MANAGEMENT

Organize and manage your font library with the intuitive Corel Font Manager™, and use your favorite fonts in CorelDRAW and Corel PHOTO-PAINT® without installing them. Work faster with fonts using the network storage feature.

COLOR, FILLS AND TRANSPARENCIES

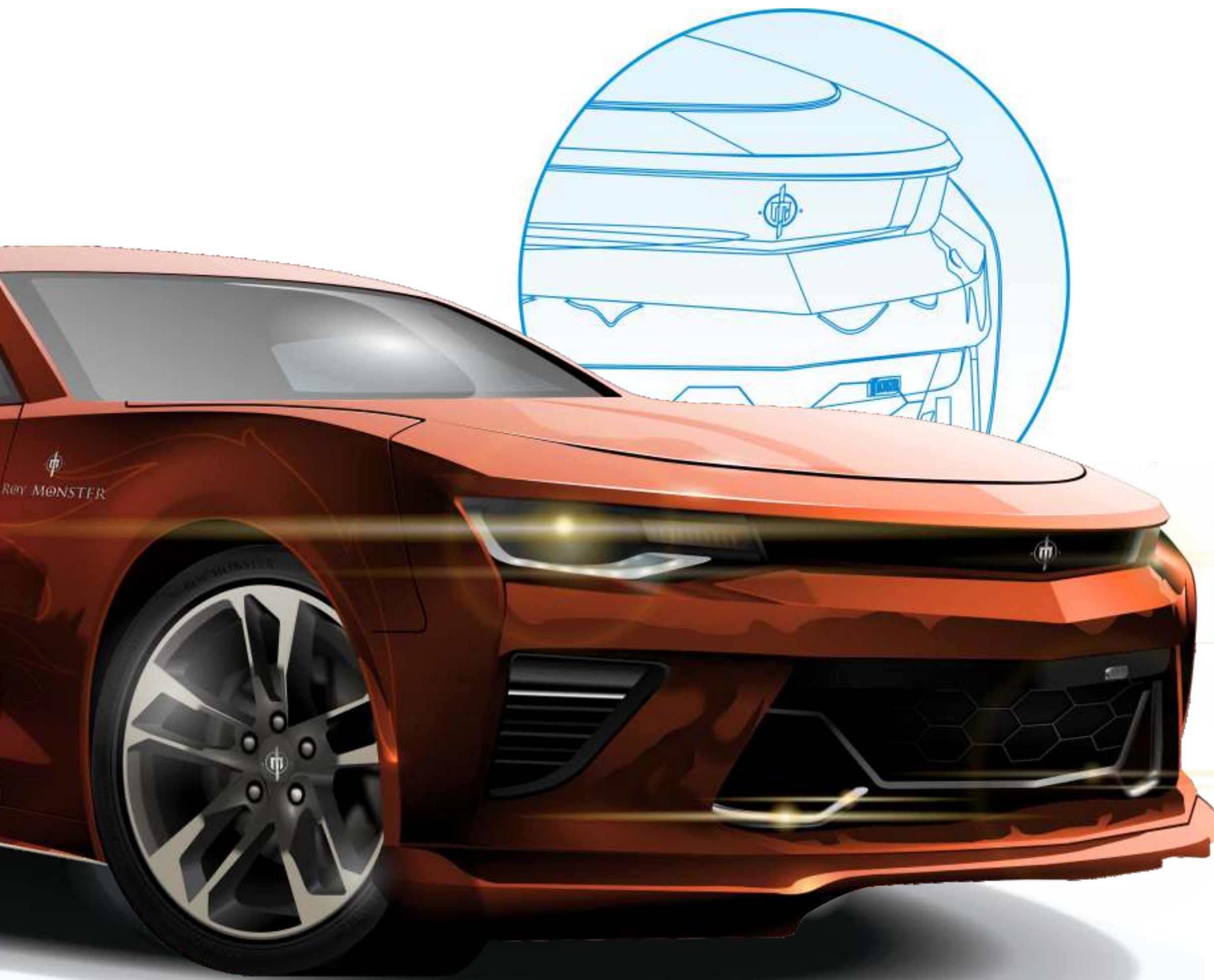
Easily apply color to fills and outlines using color swatches, or generate colors based on color harmonies. Change the transparency of an object and fill objects with patterns, gradients, mesh fills, and more.

STYLES AND STYLE SETS

The Object Styles docker (Windows) and the Objects Styles inspector (Mac) make it a breeze to manage styles and style sets to apply consistent formatting across multiple objects, produce iterative versions, and format whole documents quickly and consistently.

EASY BITMAP-TO-VECTOR TRACING

Save precious time while converting bitmap images into vectors. The built-in Corel® PowerTRACE® engine turns the most demanding bitmap images into high-quality vector objects.



Roy Monster

PUBLISHING

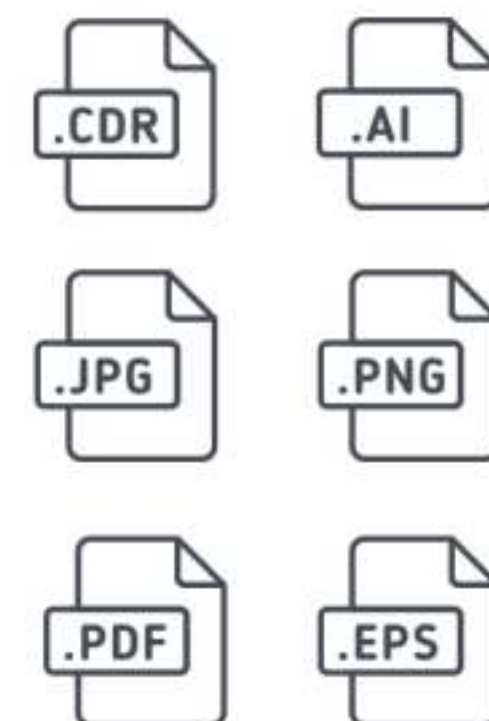
DIGITAL & PRINT

No matter the skill level or background, CorelDRAW Graphics Suite users need flawless publishing and output every time.

CorelDRAW makes it easy to prepare your documents for print. With a powerful color management engine, you can control color consistency across different media and know your colors are accurate before you print.

Develop captivating web content with a collection of web graphics tools and presets. With the Publish to WordPress feature, you can upload a variety of image formats directly to your WordPress site.

Compatible with over 100 graphics, publishing and image file formats, it's easy to work with any kind of project asset. Publish to a wide variety of file formats, including AI, PSD, PDF, JPG, PNG, SVG, DWG, DXF, EPS, TIFF, and more.



WHAT'S INCLUDED?



CorelDRAW®

Intuitive vector-illustration and page-layout application that meets the demands of today's busy graphics professionals



Corel
PHOTO-PAINT®

Professional image-editing application that lets you quickly and easily retouch and enhance photos



Corel
Font Manager™

Standalone font management application that lets you find, organize, and preview fonts stored locally or in the network



Corel®
PowerTRACE®

Utility embedded in CorelDRAW that helps you quickly and accurately convert bitmaps into editable vector graphics



CorelDRAW.app™

Sign in to the web app when you are on the go without your computer to access your work anywhere.



Corel®
AfterShot™ HDR

Photo editor that lets you create HDR images and make easy corrections and enhancements to your RAW or JPEG photos

BenVista

PhotoZoom Pro 4

Plug-in that lets you export and enlarge digital images from Corel PHOTO-PAINT

ROYALTY-FREE, QUALITY CONTENT

- 7,000 clipart/ digital images
- 1,000 high-resolution stock-photos
- 1,000 TrueType/OpenType fonts
- 150 design templates
- 600 fountain, vector and bitmap fills
- Expert insights, hints, and training videos

AUTOMATION SUPPORT

- JavaScript (JS): the integrated API supported on Windows and macOS enables developers to automate tasks and extend functionality
- Microsoft Visual Basic for Applications (VBA)*: Integrated development environment that includes 64-bit support and that helps you streamline your workflow by automating tasks
- Microsoft Visual Studio Tools for Applications (VSTA)*: Toolset that includes the power of the .NET framework, so you can create time-saving macros to automate tasks and extend functionality

Internet connection is required to access some of the included software components, online features and content.

* Available with CorelDRAW Graphics Suite 2019 for Windows



Maycon Bartowski

Company: Bartowski Graphic Design & Web

Location: São Francisco, Curitiba, Brazil

Industry: Brand Design, Web Design & Illustration.

“ I've always worked with CorelDRAW and I use it for all my projects. The workflow is very good and the small details within the application make all the difference.”

WHO IS IT FOR?

**Creative professionals—
illustrators, designers, artists**

Creative professionals in industries including advertising and publishing spend much of their time creating and editing graphics, working with text, and retouching photos. These users frequently work on layout and design projects for print and the web, from logos to multi-page brochures. Some work as illustrators and fine artists, combining classic art practices and time-honored techniques with state-of-the-art vector-illustration technology.

Creative professionals' favorite tools:

- Graphic design and page layout in one application
- Creative vector tools: Symmetry, Pointillizer™, Impact tool
- Curve tools
- Color styles and harmonies
- Specifically designed to make the most of both Mac & Windows



WHO IS IT FOR?

Graphics and production professionals—sign makers, web producers

These users work in a variety of industries, including sign making, screen printing, engraving, and graphic design for print and the web. They frequently create, repurpose and combine assets such as illustrations, scanned logos, photos, clipart images, and fonts.

Graphics and production professionals may need to repurpose content provided by clients in a variety of formats.

This content often serves as a starting point of a project, but they may spend the bulk of their time reworking and tweaking it. Whether they are producing new artwork or working with creative assets provided by the client, graphics and production professionals can spend much of their time on design optimization and output preparation. Final projects may be created on large format printers, engraving machines, glass or vinyl cutters, and silk-screen or Direct to Garment (DTG) printers.



Production professionals' favorite tools:

- PowerTRACE
- Curve & shaping tools
- Color management
- Pre-press module
- PDF/X output



Joe Diaz

Company: Diaz Sign Art

Location: Pontiac, Illinois, USA

Industry: Sign Shop and Design

CorelDRAW Master

“CorelDRAW's flexibility has proven to be extremely valuable for a business like ours. Because of the vast number of professional tools available, we are able to create and complete a wide range of different projects for our clients.

CorelDRAW Graphics Suite has helped us earn the reputation of being visual problem solvers, and the one-stop shop for all marketing needs.”

OCCASIONAL GRAPHICS USERS

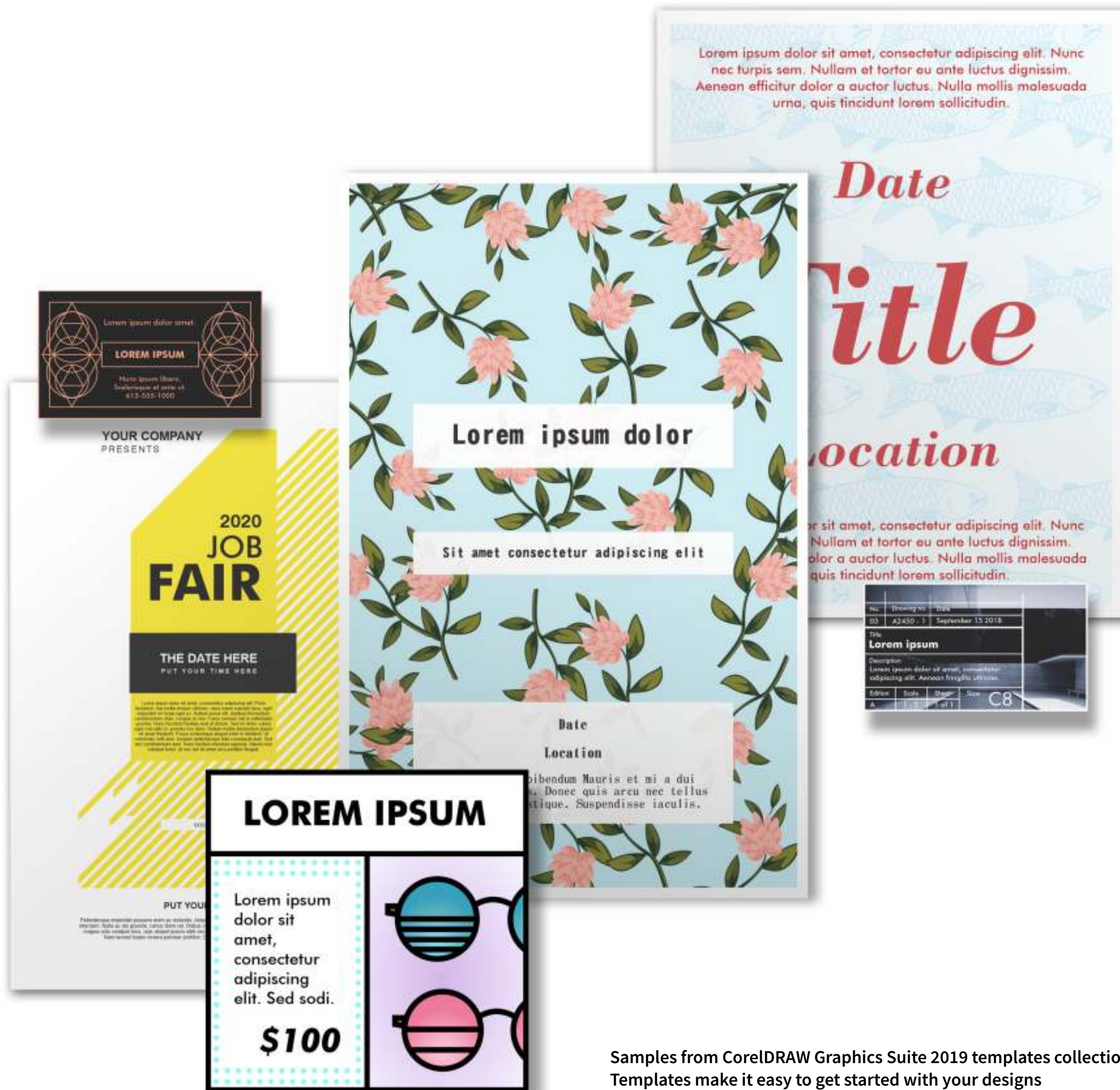
Small business owners, knowledge workers

Entrepreneurs and small to medium-sized businesses often create marketing and communications materials in-house. Typically self-taught in graphic design, these occasional users modify existing artwork, retouch photos, and create ads, flyers, and other marketing collateral.

Business users in medium-sized to large enterprises strive to create professional, graphically rich projects ranging from sales presentations to web graphics. They spend considerable time reworking existing projects and retouching photos to use in their marketing and communications materials.

Occasional graphics users' favorites:

- Professionally designed templates
- In-app learning tools: hints & tutorials
- High-quality content: fonts, photos, clipart
- File support: ready for print service bureaus



Samples from CorelDRAW Graphics Suite 2019 templates collection
Templates make it easy to get started with your designs



There are no limits to what
I can create in CorelDRAW!”

Pavel Dex





CHOICE MATTERS

PURCHASE OPTIONS

Whether you prefer to subscribe to keep full control of an annual budget or if you prefer to own software outright, Corel provides choice by not forcing you into one licensing model.

Subscription

This option offers a low annual cost and the flexibility to stop paying as your software needs go away. With a subscription, the software is always up-to-date and will be supported for the latest operating system updates, devices, and technologies. If you want to continue using the software, take advantage of an auto-renew option.

Perpetual License

With a one-time payment, you receive the right to own and use the software version forever, with no extra cost. By purchasing a box, download version, or volume license version of the product, you get access to the full benefits of a specific version.

Upgrade Protection

Save on future versions with this easier and more affordable way to stay up to date with CorelDRAW Graphics Suite. Not currently part of the program? Add Upgrade Protection when you purchase CorelDRAW Graphics Suite 2019 or within 30 days, and you're guaranteed to get future releases at the lowest possible cost, together with the confidence of knowing you're using the latest version of CorelDRAW Graphics Suite. With one low annual payment, you are entitled to the latest version of the applications, as soon as they become available, as well as support for the latest operating system updates, devices, and technologies. Enjoy these benefits as long as your account is active, and even if you decide to stop the Upgrade Protection Program, you can continue to use your latest version.

LICENSING FOR LARGE ORGANIZATIONS

Having control of your organization's software licensing is a key part of running a successful business. Corel provides significant licensing flexibility for larger organizations in the commercial, government, and academic spaces, offering real solutions for your unique needs. This includes network deployment, virtualization environment support, and portability of licenses as employees change.

For even greater flexibility, CorelDRAW Graphics Suite Enterprise License includes extensive multilingual software deployment capabilities, even if your workstations aren't connected to the Internet. This not only enables you to address the graphics needs of your employees across the organization from a single installation point, but also minimizes your deployment costs. And since CorelDRAW Graphics Suite Enterprise Licenses include CorelSure Software Maintenance, you are guaranteed to have access to the latest version of the software for your users at all times — on Windows and Mac.

What's more, CorelDRAW.app adds a whole new level of flexibility for working with graphic designs in teams. The optional CorelDRAW.app Enterprise provides access to CorelDRAW (CDR) files through Microsoft SharePoint or Google Drive as set up with G Suite corporate accounts. No installation required, CorelDRAW.app Enterprise enables all users in the company to access, review and even create designs in a web browser, using their corporate Microsoft Office 365 or G Suite user accounts through single-sign-on.



Oswaldo Rosales



FEATURE HIGHLIGHTS



BE IN CONTROL

OBJECTS DOCKER/ OBJECTS INSPECTOR **NEW!**

The new Objects docker (Windows) / Objects inspector (macOS) lets you work faster and smarter by giving you direct control over the structure of a document and fast access to its components. Object thumbnails instantly reflect changes or effects, and new view modes let you choose what part of a design to focus on.



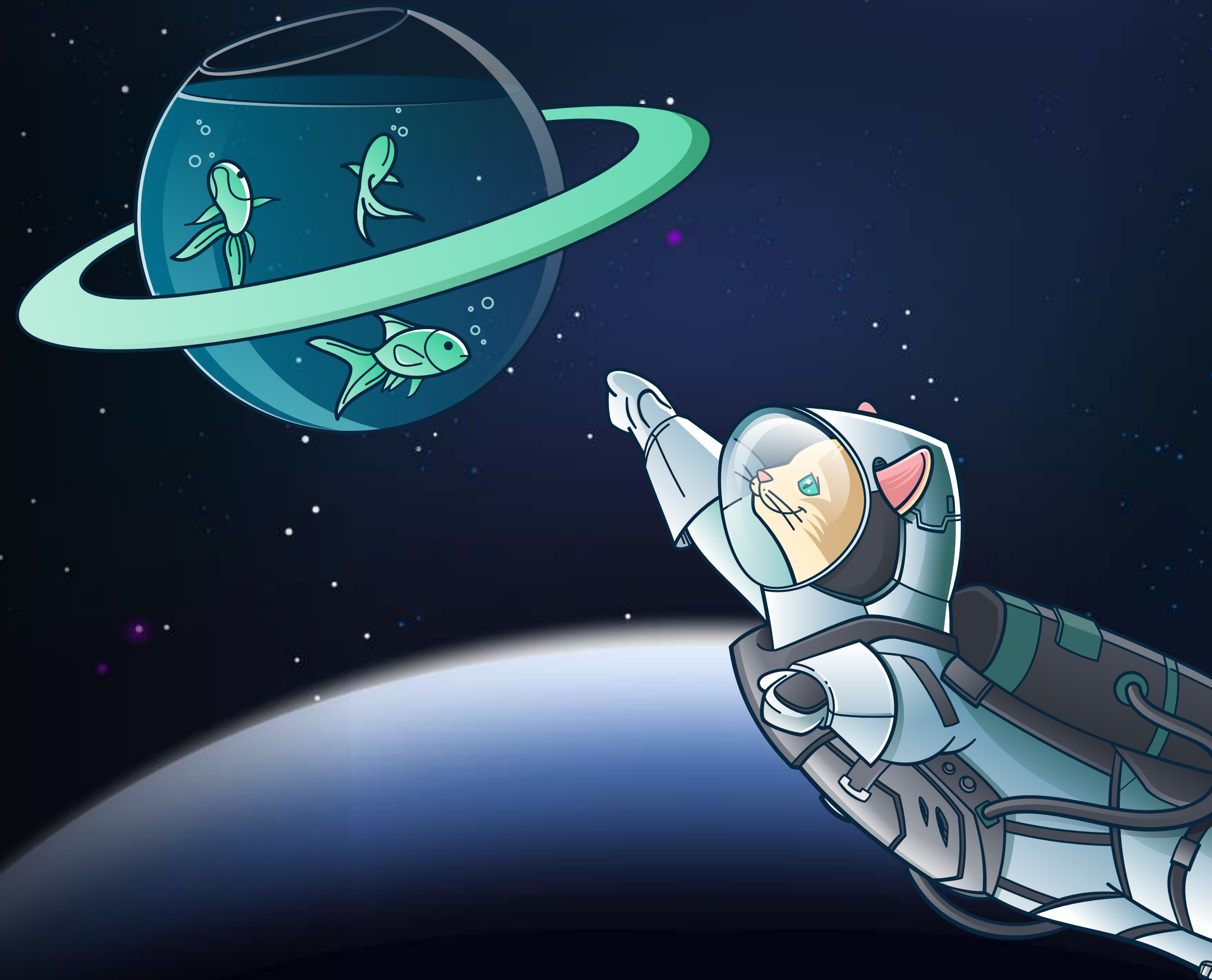
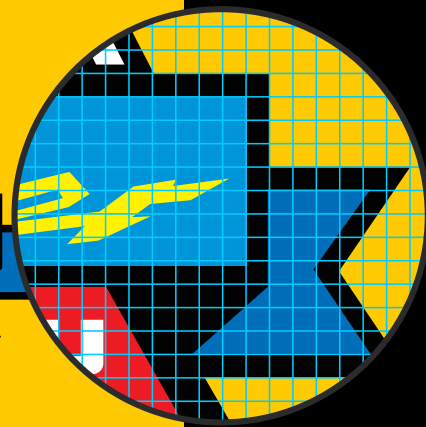
PIXEL-PERFECT WEB GRAPHICS **NEW!**

A series of new features take the guesswork out of creating pixel-perfect images for the web. Enhanced pixel snapping ensures clean results by automatically positioning an object on the pixel grid based on its properties. New page-alignment defaults and precise pixel readouts help deliver crisp graphic edges.



TYPE AND PAGE LAYOUT

Take advantage of advanced OpenType support including Stylistic Sets and Ligatures. Create flyers, brochures, and documents of up to 999 pages directly within CorelDRAW, including master layers and even and odd page layouts.



BE CREATIVE

NEW!

NON-DESTRUCTIVE EFFECTS

The new Effects tab in the Properties docker makes it easy to add, modify, and experiment with bitmap effects on both vector objects and images, all without altering the original. It displays a list of all applied effects, which you can quickly adjust in a few clicks.



NEW!

ACCESSING DESIGN ASSETS

When working with design assets, a reimagined UI lets you quickly find what you need. You can download new packs, add your own library, and more — all within the suite. What's more, the new CONNECT™ Content docker provides a central location where you can browse images, as well as access more graphics.



Carl Louie Garcia

TEMPLATES WORKFLOW **NEW!**

A redesigned template workflow helps to boost productivity. You can download new templates, add your own library, easily migrate a collection anywhere, and more—all within the suite. Locate specific templates in a snap by displaying them by category, most recently used, or ones flagged as favorites.

FRESH INSPIRATION **NEW!**

CorelDRAW 2019 offers over 150 templates, including 90 new ones, that can help anyone deliver professional results. In no time at all, you can create brochures, posters, cards, social media images and more, without having to start from scratch. And because the templates are easily customizable, producing a design with just the right look is effortless.



BE PRODUCTIVE

PDF/X-4 SUPPORT **NEW!**

CorelDRAW Graphics Suite 2019 offers a greater variety of ISO-compliant PDF/X export options. New support for PDF/X4 helps ensure easy output of files that are compatible with the widest range of printing devices. It also eliminates the need for any other tools to finalize a document before handoff to a print service bureau.

FIND AND REPLACE

DOCKER/INSPECTOR **NEW!**

The new Find and Replace docker simplifies locating drawing components and changing their attributes. There's a new option that lets you select an object and use its properties as the basis of a search. You can also simultaneously replace multiple object properties, such as color, fill, and outline.

STREAMLINED OPTIONS

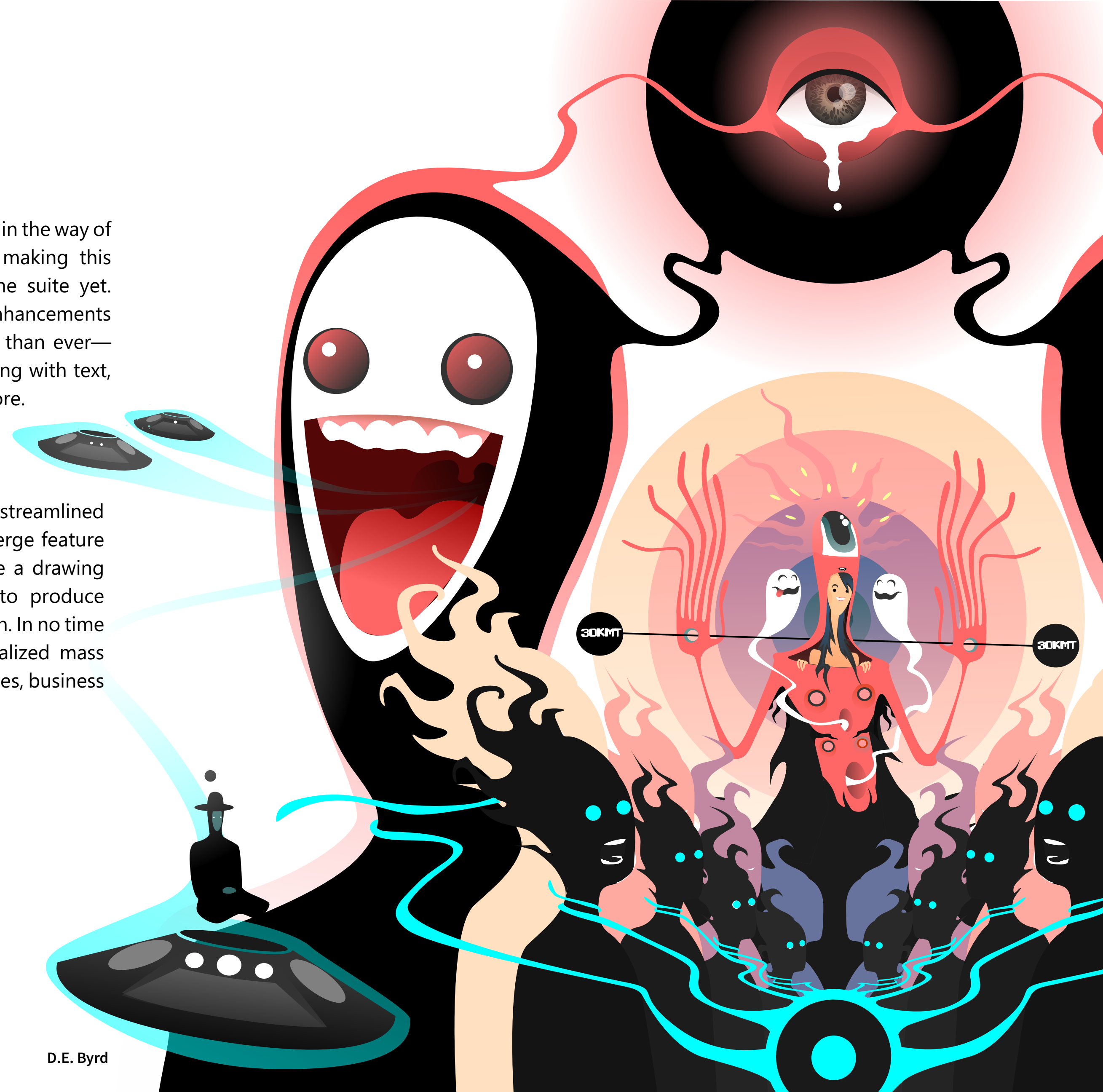
The interface for setting preferences has been reorganized, making it quicker and easier to tailor your design environment. The revamped UI minimizes time spent searching for controls and ensures it's clear whether changes affect the entire suite, the active application, or the current document.

PERFORMANCE

Because even a little lag time gets in the way of your creativity, we focused on making this release the fastest version of the suite yet. Comprehensive performance enhancements ensure that you can work faster than ever—whether launching an app, working with text, resizing UI elements and much more.

PRINT MERGE

With an overhauled UI and a streamlined workflow, the enhanced Print Merge feature makes it even easier to combine a drawing with snippets of variable text to produce several different copies of a design. In no time at all, you can generate personalized mass mailings, targeted marketing pieces, business cards, and more.



DESIGN WHEREVER INSPIRATION STRIKES YOU

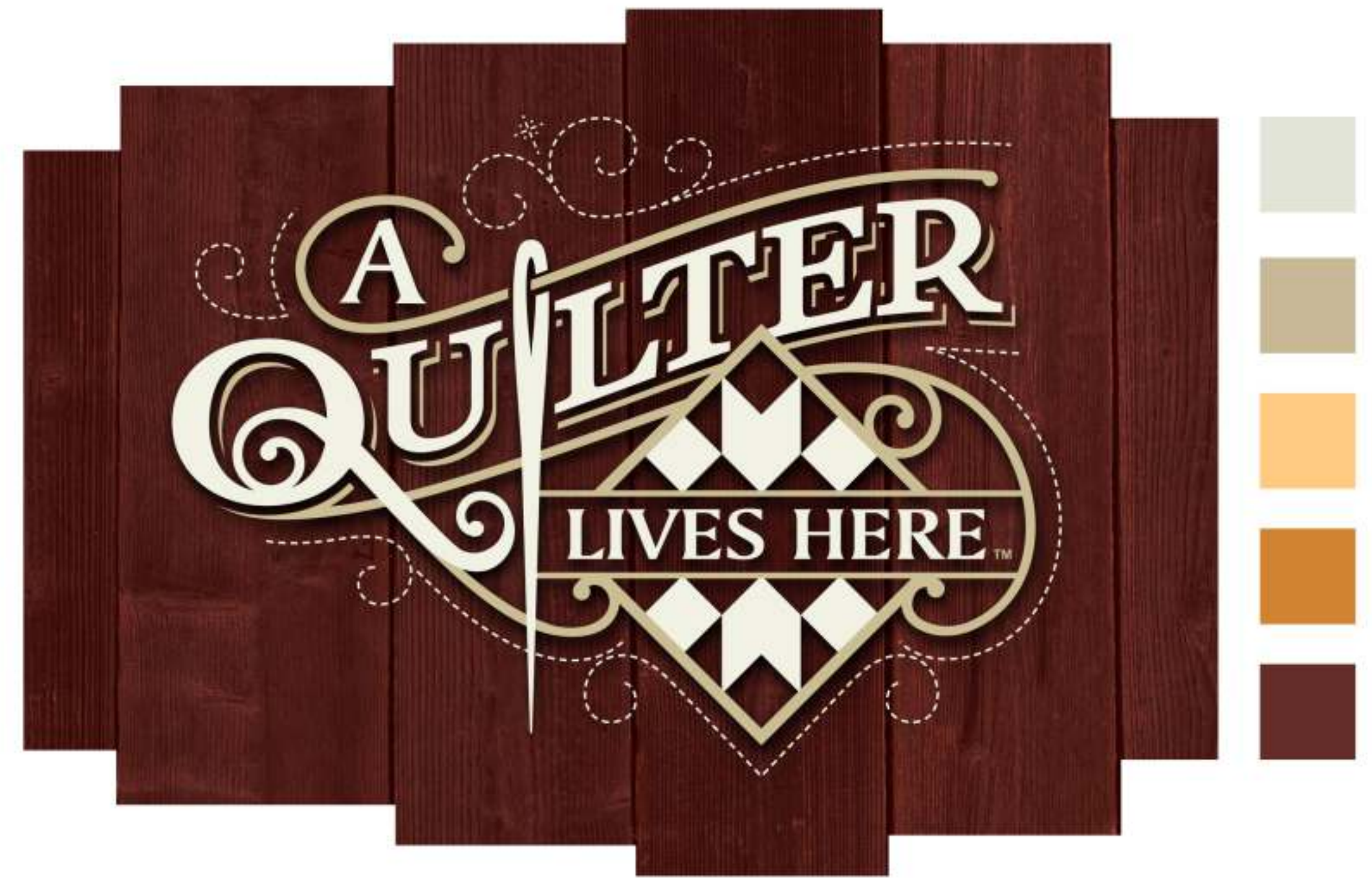
CORELDRAW.APP **NEW!**

New in CorelDRAW Graphics Suite 2019, this powerful web app lets you turn good ideas into great designs, the moment they arise. CorelDRAW.app enables you to access your work whenever and wherever. No installation required, simply sign into CorelDRAW.app on any browser to show a client a concept from a mobile device or create remotely when you're not near your computer. You can start a design on your computer, then view it and add more content in the web app. When you reopen the document on your computer, anything you added in the web app is stored on a new editable layer. At home, at work, or on the go, CorelDRAW Graphic Suite 2019 makes doing what you love more accessible than ever. 

CORELDRAW.APP ENTERPRISE **NEW!**

The optional Add-on to CorelDRAW Graphics Suite Enterprise licenses provides access to CorelDRAW (CDR) files through Microsoft SharePoint or corporate Google Drive. No installation or IT maintenance required, CorelDRAW.app Enterprise enables all users in the company to access, review and even create designs in a web browser, using their corporate Microsoft Office 365 or G Suite user accounts through single-sign-on.





Joe Diaz

FEATURES YOU WON'T FIND ELSEWHERE

LIVESKETCH

The LiveSketch tool uses Artificial Intelligence technology to offer a revolutionary way to bring vector designs to life. It combines the speed of sketching with flexible stroke-adjustment controls so you can capture your design concepts using hand-drawn vector curves. Intuitive settings let you easily fine-tune how CorelDRAW meshes with your sketching cadence.

COLOR HARMONIES AND STYLES

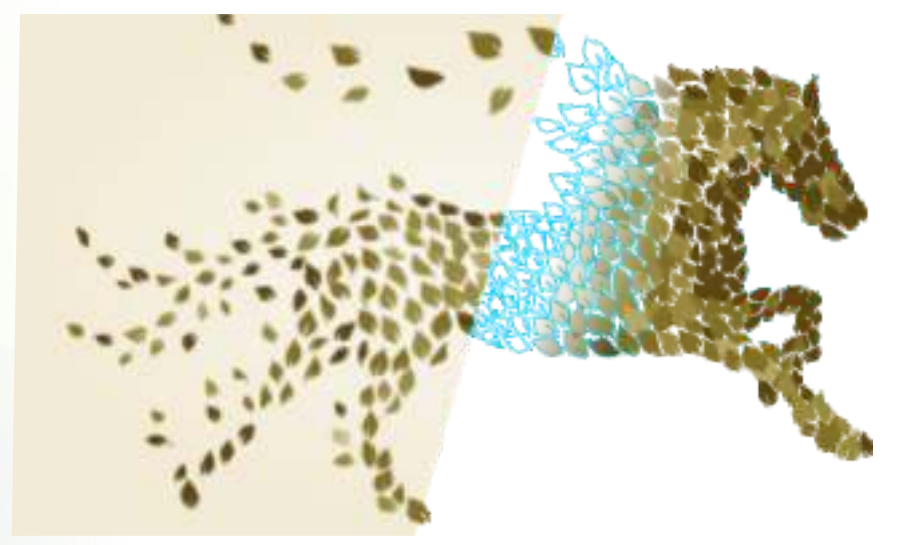
You can group a document's color styles into a color harmony, which makes it quick and easy to produce iterative designs with varying color schemes. A color harmony combines two or more color styles into a hue-based relationship. You can then modify them collectively, altering the color composition of your artwork in one step.



CORELDRAW GRAPHICS SUITE USER FAVORITES

COREL FONT MANAGER

When the number of fonts on your system becomes overwhelming, Corel Font Manager is the answer. This standalone font-management application gives you the tools to control every aspect of your typography workflow. It's also integrated with CorelDRAW and Corel PHOTO-PAINT so you can easily manage your typeface and font collections no matter what app you're using.



MESH FILL TOOL

CorelDRAW lets you create unique effects by filling an object with mesh. The Mesh Fill tool creates smooth color transitions in any direction without having to create blends or contours and lets you apply transparency to reveal underlying objects. You can specify the grid's intersecting points, as well as the number of columns and rows in the grid.

POWERTRACE

This utility is embedded in CorelDRAW to help you quickly and accurately convert bitmaps into editable and scalable vector images, which is especially useful for design work that's based on existing artwork. PowerTRACE generates a color palette, letting you instantly edit, merge, or delete specific colors found in the original artwork.



PROFESSIONAL PHOTO-EDITING

Corel PHOTO-PAINT offers a range of comprehensive pro image-editing features. There is a wide selection of lenses that are applied non-destructively, so any edits are displayed on the screen through the lens rather than applied to the image pixels. The Clip Mask feature lets you adjust the properties of a group of objects in a way that doesn't alter the individual objects within the group. The Pass Through merge mode gives you total control when applying a lens or effect to groups of objects.

STRAIGHTEN TOOL

When something in a photo is just a little off-kilter, it detracts from an otherwise great shot. Thanks to the Straighten tool in Corel PHOTO-PAINT, you can easily salvage those photos. It lets you interactively fix crooked images, rotate lenses, masks and objects, and crop as you align.

HEALING CLONE TOOL

The Healing Clone tool discreetly removes unwanted spots and imperfections from an image by painting with sampled texture and matching it to the color of the area that you're retouching. In a few clicks, blemishes or scars can be seamlessly repaired and blended into the rest of the photo.

PERSPECTIVE CORRECTION

The Perspective Correction tool makes it easy to interactively adjust the perspective of objects in photos to get the exact look you wanted. Right in the image window, you simply move the four corner points to get the perspective that you have in mind.

SMART CARVER

The Smart Carver® lets you easily remove unwanted areas from a photo and simultaneously adjust its aspect ratio. You pinpoint the image area you want to preserve or remove by painting it. When adjusting aspect ratio, presets ensure there's no distortion when you contract or expand a photo's background vertically and horizontally.





**TAKE A TOUR &
GIVE IT A TRY**



ENZORE

TAKE A TOUR

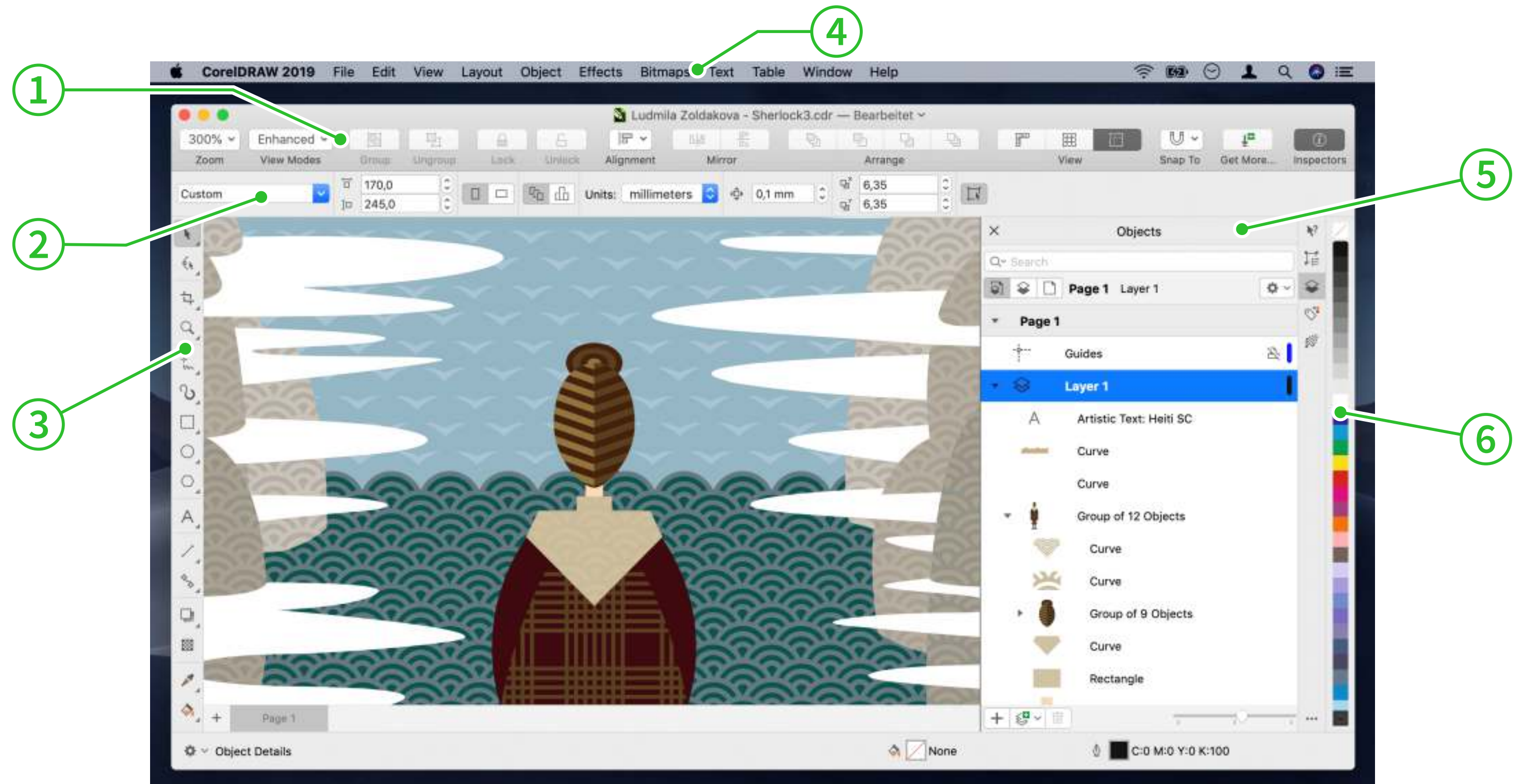
THE CORELDRAW FOR MAC WORKSPACE **NEW!**

CorelDRAW 2019 for Mac lets you design differently on macOS. Developed with the Apple user in mind, it delivers a unique design experience built specifically for your Mac. With a user-friendly interface, intuitive tools and learning materials, CorelDRAW makes it easy to get it right the first time. Before you get started, here's a quick rundown of the CorelDRAW for Mac workspace.

1. Toolbar: A bar near the top of the workspace that contains buttons that are shortcuts to commonly used menu commands for setting zoom levels, choosing view modes, working with objects, and more.

2. Property bar: Located just below the toolbar, the context-sensitive property bar displays commonly used commands that are relevant to the active tool. The contents of the property bar change depending on which tool is active.

3. Toolbox: Docked on the left side of the workspace, the Toolbox contains tools for creating, filling, and modifying vector, text and image objects. Some of the tools are visible by default, while others are grouped in flyouts. Flyouts open to display a set of related tools. The Toolbox also contains the color control area, which lets you select colors and fills.



Artwork: Ludmila Zoldakova

4. Menu bar: Located at the very top of the workspace, the menu bar contains drop-down menus with commands grouped by category.

5. Inspector: A window that displays the same types of controls as a dialog box, such as command buttons, options and list boxes. Unlike most dialog boxes, you can keep inspectors open while working on a document, so you can readily access commands to experiment with different effects.

There are a range of inspectors. A few of the most frequently used ones include the **Properties** inspector, which presents object-dependent formatting options and properties, letting you modify object settings from one location.

When working with complex projects, you can find layers and objects quickly by using the **Objects** inspector.

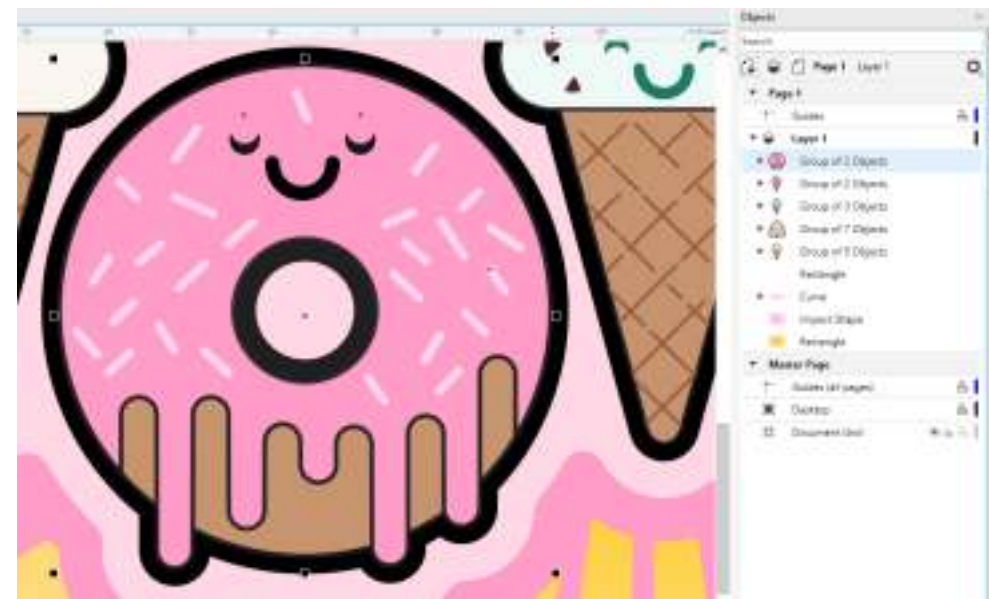
The **Transform** inspector lets you experiment with transformations without affecting the original object. It lets you transform objects with precision and apply the transformation to the duplicate of an object, which is created automatically. To get an idea of the wide variety of inspectors, click Window menu > Inspectors.

6. Color palette: A dockable bar containing color swatches.

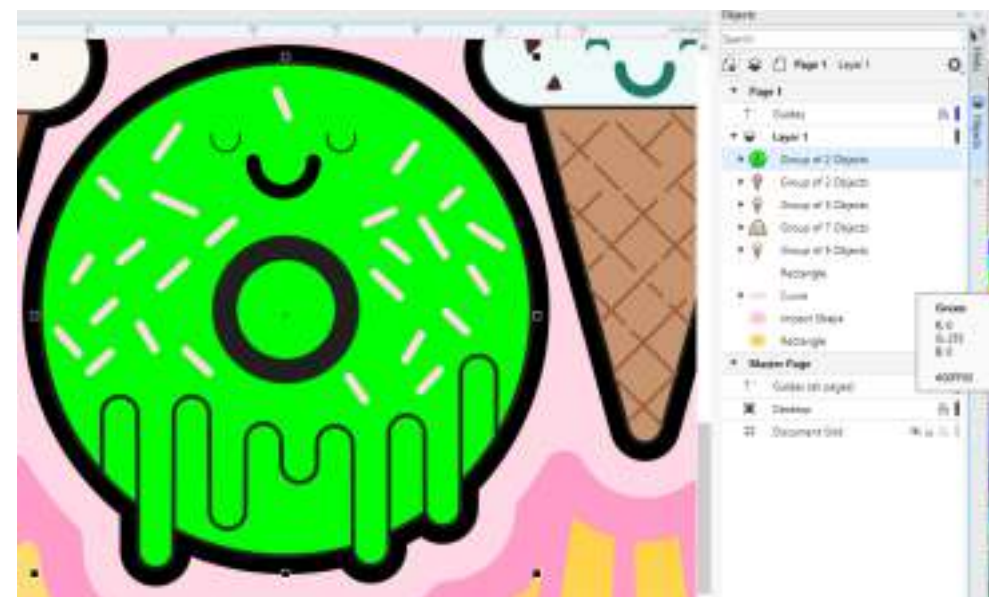
GIVE IT A TRY!

MANAGE DESIGN ELEMENTS, LAYERS AND PAGES **NEW!**

How you work with and manage design elements, layers and pages has been totally reimagined in CorelDRAW Graphics Suite 2019. The new Objects docker (Windows) / Objects inspector (macOS) has an intuitive interface that makes it easier to find parts of your design. A range of view modes allow you to change what the Objects docker/inspector displays. This lets you focus on what's most critical at that point in your workflow, whether it's everything in the document, only the active page, or just a list of pages in the design.



1. Open the Sweets Illustration discovery file from the Welcome Screen (Get started section).
2. In the Objects docker/inspector, you expand Layer 1.
If the Objects docker/inspector isn't open, click **Window** menu > **Dockers/Inspectors** > **Objects**.



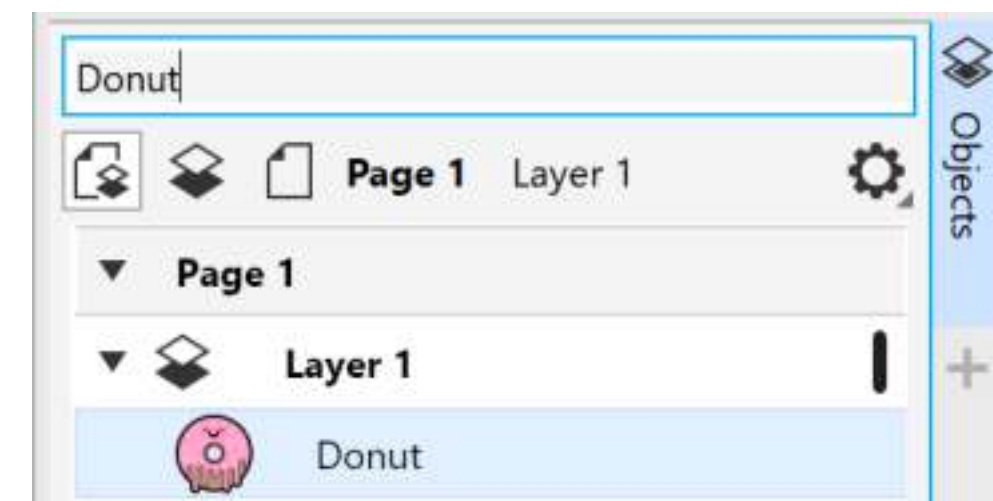
3. Right-click (Windows) or Control-click (macOS) the top-most **Group of 2 objects**, click **Rename**, and name it **Donut**.
4. With Donut selected, click color swatches on the color palette to change its color.



Notice how the Donut icon in the Objects docker/ inspector updates as you choose a new color.

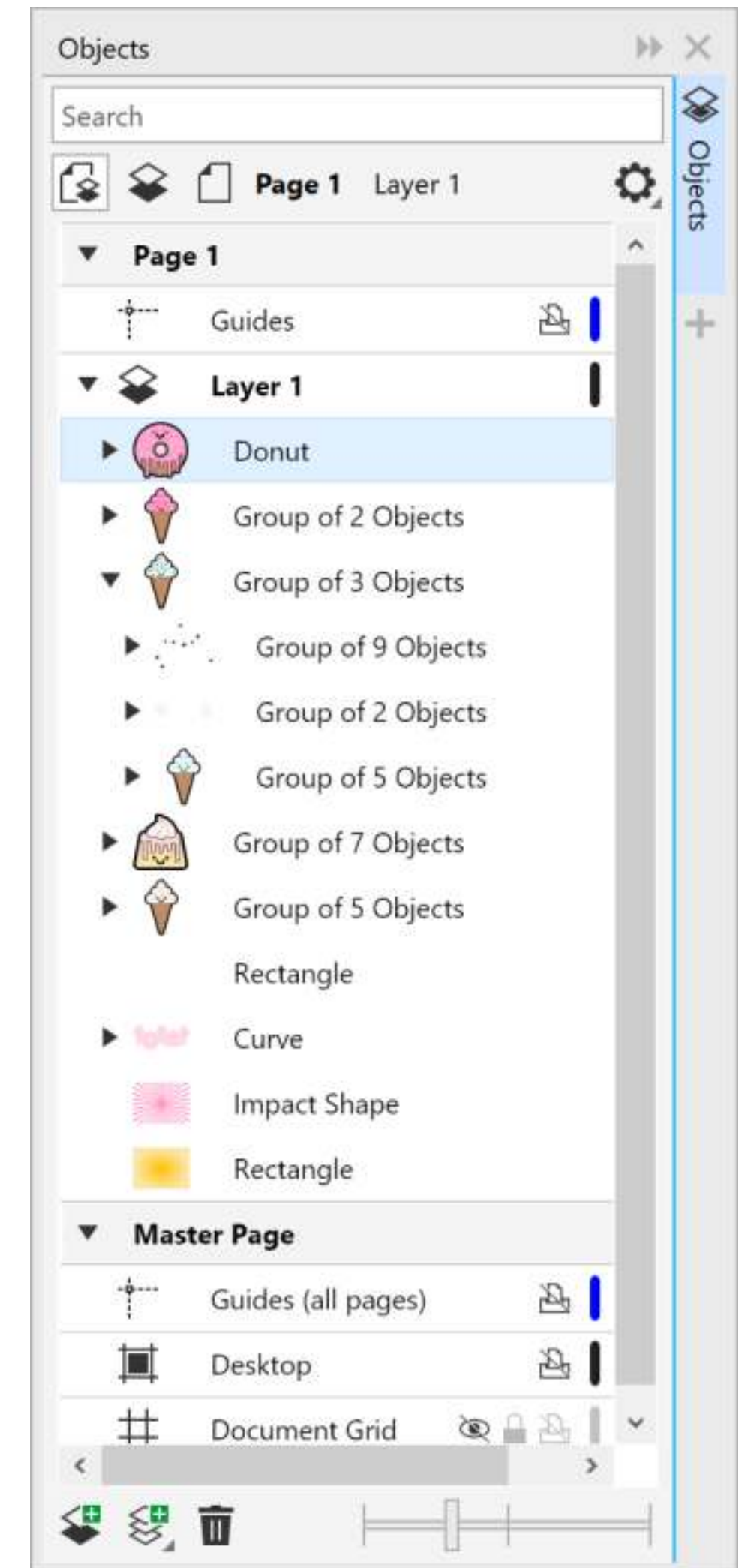
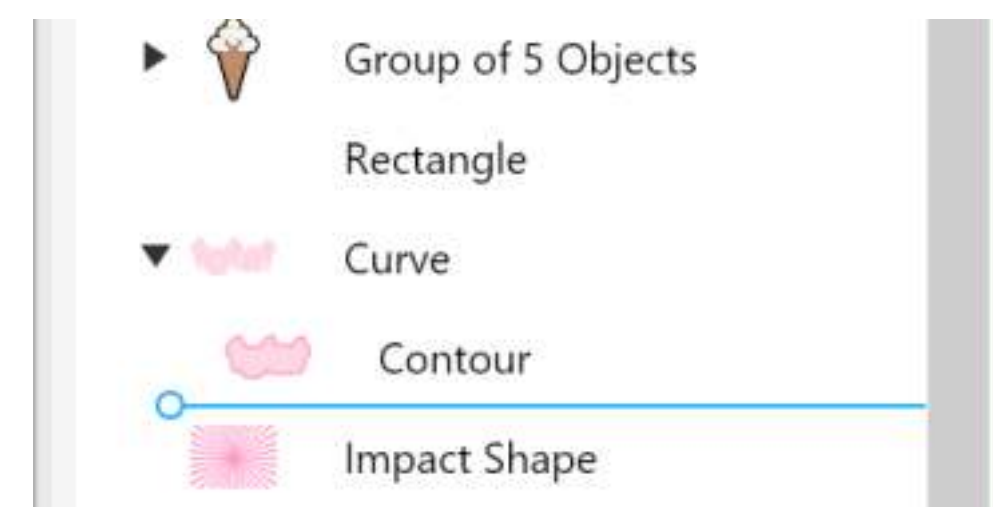
5. In the **Search** box at the top of the docker, type **Donut**.

The contents of the Objects docker/ inspector are filtered and only items that meet the search criteria display.



6. In the Objects docker/ inspector, select the yellow Rectangle and drag it above the "Impact Shape" in the object stack.

Notice how the appearance of the Impact effect changes as its position in the object stack changes.



GIVE IT A TRY!



Agus Riyanto


NEW!

CREATE PIXEL-PERFECT GRAPHICS FOR THE WEB

When a design is destined for the web, pixel-level precision is critical. With that in mind, CorelDRAW 2019 offers new features that help guarantee that any graphic you export has the crisp edges that you were expecting every time.

1. Click File menu > New.
2. In the Create a New Document dialog box, choose Web from the Preset list box.

Using pixels as the unit of measurement is important. When you choose the Web preset, pixels are automatically set as the unit of measurement and the view mode is set to Pixels. When a design is destined for the web or social media, this preset helps you identify issues before you export.

3. On the property bar, choose Leaderboard Ad from the Page size list box.
4. Click the Rectangle tool  and draw a rectangle on the drawing page.
5. On the property bar, type 67.3 and 20.5 in the Object size boxes.
6. Copy the rectangle, hold down **Ctrl** (Windows) or **Command** (macOS), and move it horizontally so that the rectangles don't overlap.
7. Select the first rectangle, right-click (Windows) or Control-click (macOS), and click **Align with Pixel Grid**.

Note how the values in the Object size boxes on the property bar change.

8. Click off the drawing page to deselect the object.
9. Click File menu > Export For/To > Web.
10. In the Export for Web dialog box, save the image.
11. Open the image and compare the crispness of edges of the two objects.

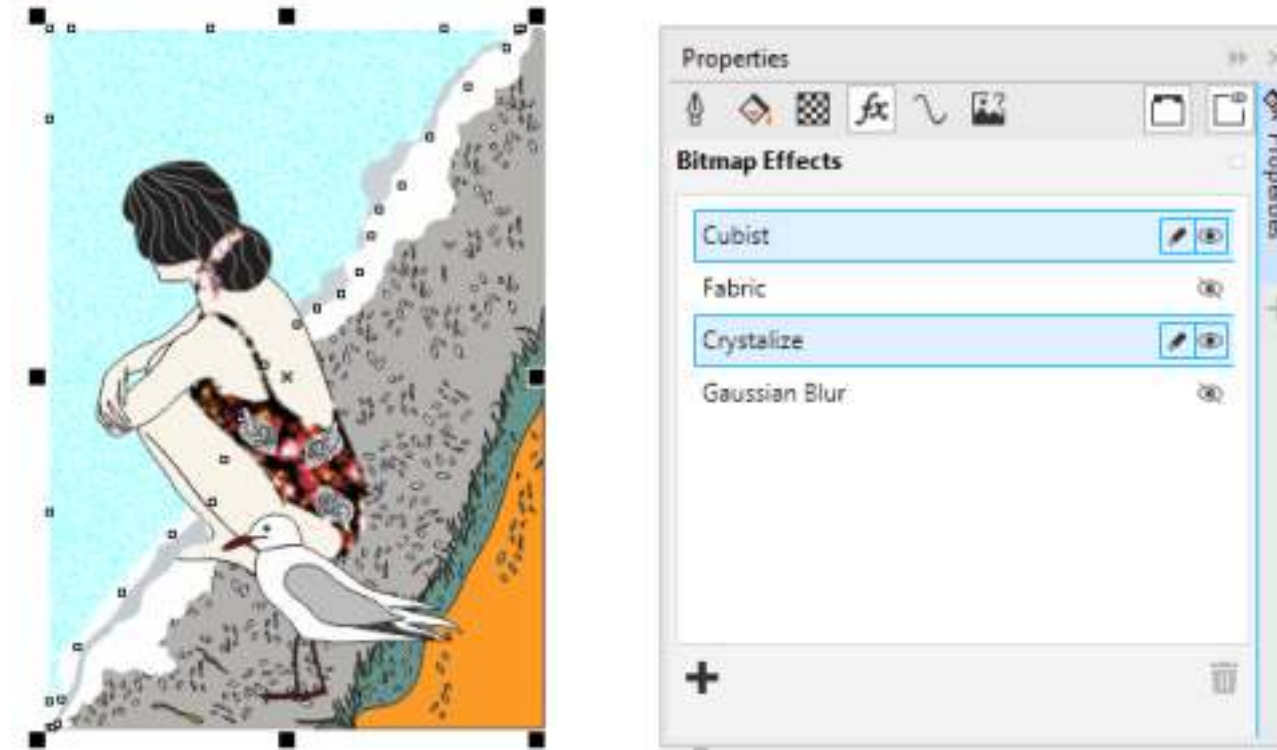
GIVE IT A TRY!

APPLY NON-DESTRUCTIVE BITMAP EFFECTS **NEW!**

CorelDRAW 2019 makes it easy to use bitmap effects on both vectors and bitmaps—all without affecting the source image or object. Great when working with bitmaps in a design or working on a vector illustration, this new workflow allows for unlimited experimentation. You can get different looks by reordering effects on the FX tab in the Properties docker/inspector or toggling them on or off, opening up a world of creative possibilities.


1. Open the sample file **NDE sample.cdr**, and click the design.
2. Click **Window** menu > **Dockers/Inspectors** > **Properties**, and click the new **fx** tab.

The design already has four effects applied to it, but they are hidden.



3. Click **Show/Hide** icon  to display an applied effect.

You can achieve a variety of looks by showing or hiding different effects.

4. Click the **Edit** icon  next to an effect to display the settings related to that effect.

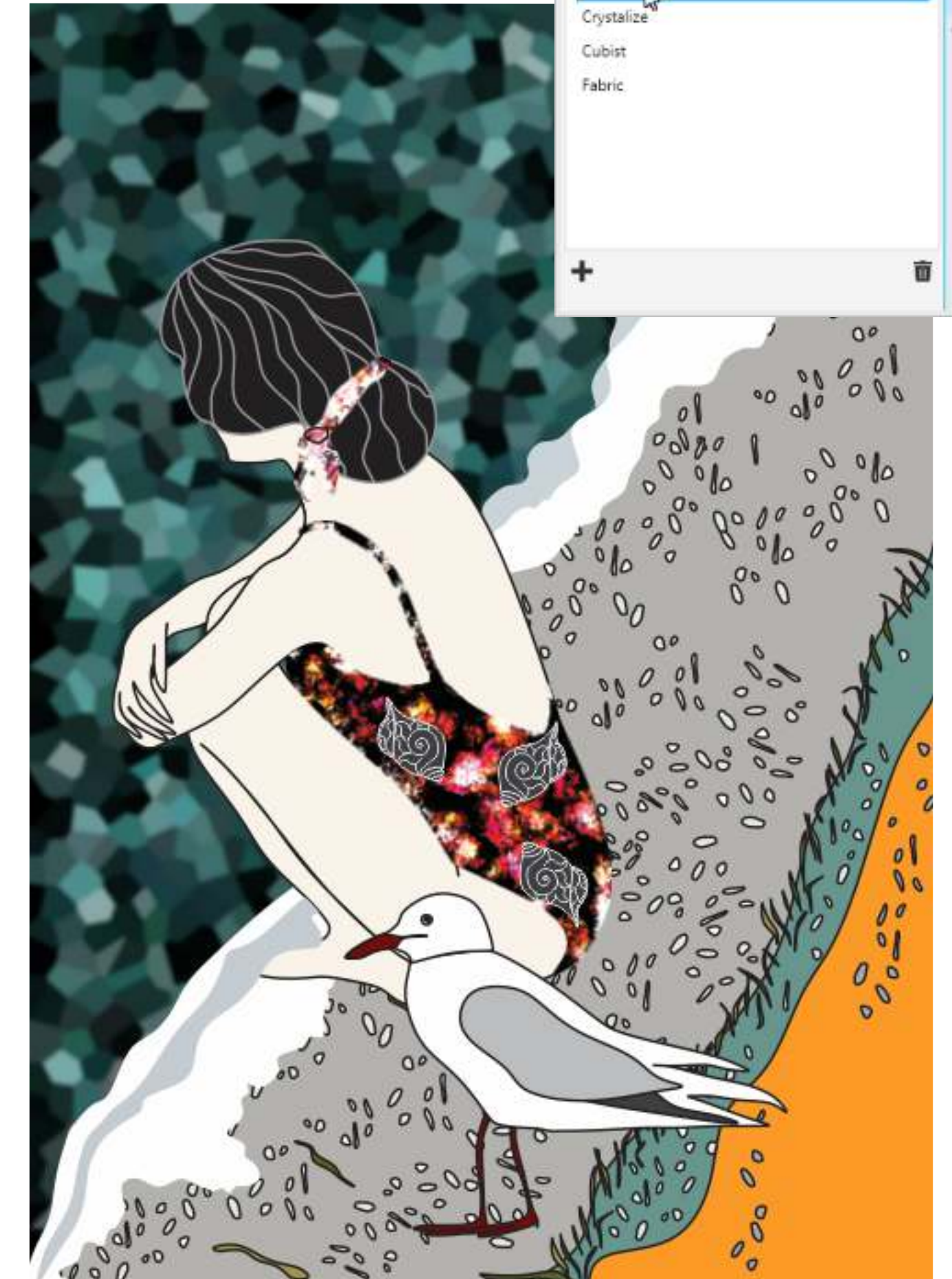
5. Modify an effect's settings.

Any adjustments you make to an effect's controls are reflected in the design in real time.

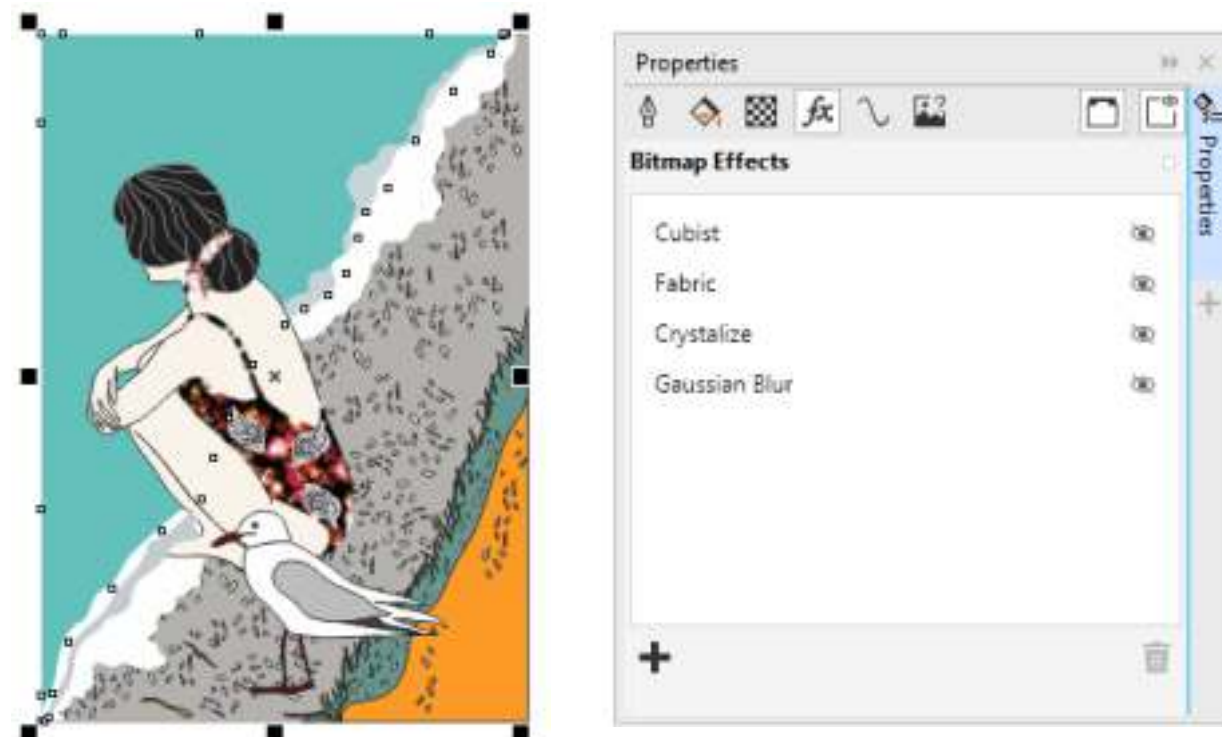
6. Display all effects.

7. Click an effect, and drag it to a new position in the effect stack.

You can get different looks by reordering effects in the list.



Artwork: Elena Blagodarova



GIVE IT A TRY!

MANAGE TEMPLATES WITH EASE **NEW!**

CorelDRAW Graphics Suite 2019 has a wide range of professionally designed templates for a variety of occasions, industries, and applications. Because they're all easily customizable, producing a design with just the right look is effortless. An enhanced workflow ensures that it's easier to work with and manage your templates.

1. Click **File** menu > **New from Template**.
2. In the New From Template dialog box, right-click (Windows) or Control-click (macOS) a thumbnail, and click **Favorite**.
3. Right-click (Windows) or Control-click (macOS) another thumbnail, click **Properties**, and add a new tag in **Tags** area.

4. In the **Choose content source** list box, choose **Favorites**.

The view of template thumbnails is filtered to display only the templates marked as a favorite.

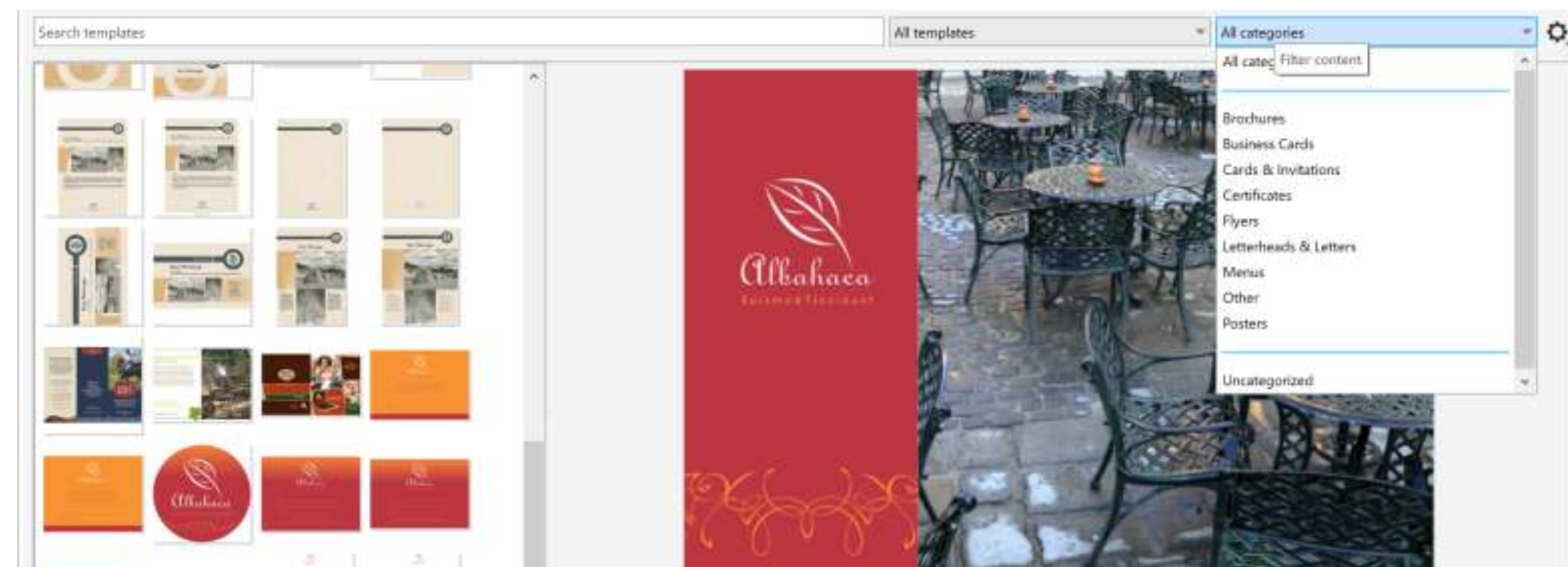
5. In the **Search templates** box, type the tag that you added.

6. The view of template thumbnails is filtered to display only templates that have that tag.

7. In the **Choose content source** list box, choose **Add New**, and do either of the following:

Click **Get More** to access downloadable template packs and other design assets.

Click **Create Alias** to a shortcut to templates stored elsewhere on your computer or a network.



WORK WITH COLOR STYLES

The Color Styles docker/ inspector makes it easy to view, arrange, and edit color styles. It's also where you can create color harmonies and use harmony rules to find complementary colors.

1. From the Welcome Screen, open the **Sweets Illustration** discovery file.

If the Welcome Screen isn't open, click **Help** menu > **Welcome**.

If the **Objects** docker/ inspector isn't open, click **Window** menu > **Dockers/Inspectors** > **Objects**.

2. Click **Window** menu > **Dockers/Inspectors** > **Color Styles**.

3. In the **Objects** docker/ inspector, click the donut (group of 2 objects), hold down **Ctrl** (Windows) or **Command** (macOS), and click the pink cone (group of 2 objects).

4. Click the **Color Styles** docker/ inspector tab to open it.

5. Drag selected object groups to the color harmony section of the Color Styles docker/ inspector.

6. In the **Create Color Styles** dialog box, click **OK**.

Three color harmonies are created.

7. Select the harmony that contains the variations of pink.

The Harmony Editor opens.



8. Drag a selector ring in the Harmony Editor and note how the colors in the design change.

When you edit a harmony, you can edit color styles simultaneously by preserving the relationship between them, or you can modify individual color styles within the harmony.



GIVE IT A TRY!

CREATE MULTI-PAGE LAYOUTS

Take advantage of master layers to easily create page-specific designs for your multipage documents.

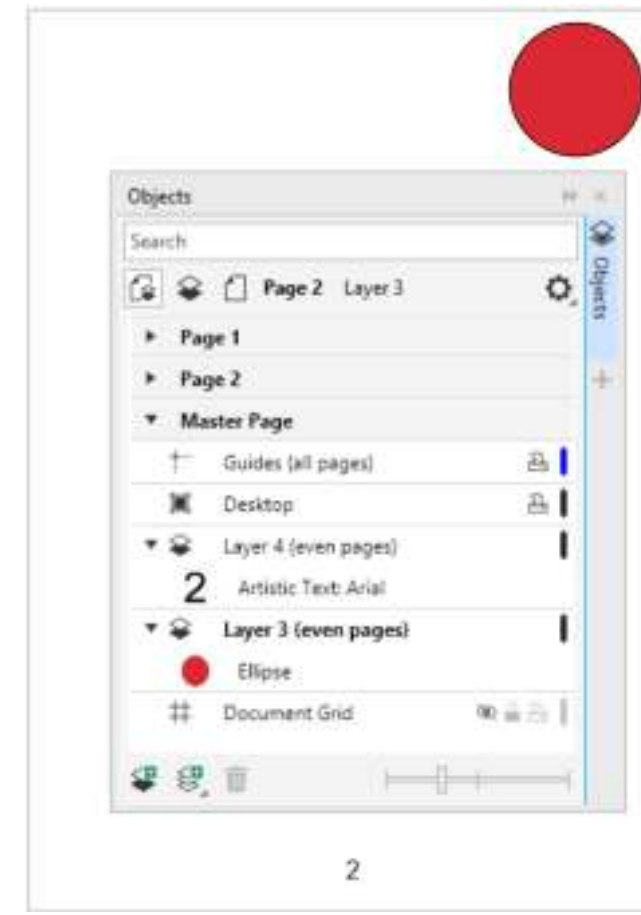
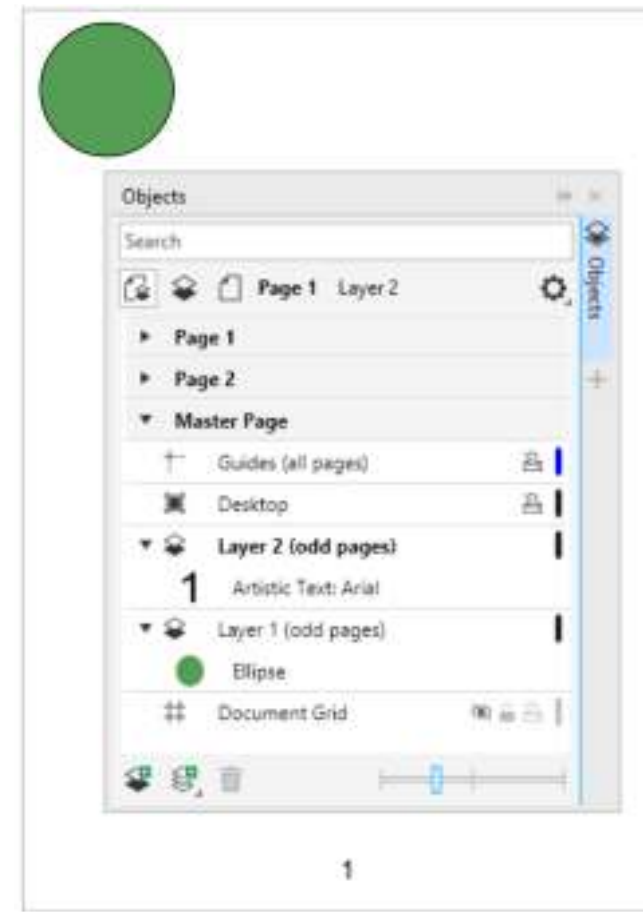
1. >Click **File** menu > **New**.
2. In the **Number of pages** box, type **2**, then click **OK**.
3. Click the tab for page 1.
4. In the **Objects** docker/inspector, click the **Options** ⚙️ button, and choose **Layer** > **New Master Layer (odd pages)**.

If the Objects docker/ inspector isn't open, click **Window** menu > **Dockers/ Inspectors** > **Objects**.

5. Add a shape to the top-left corner of the page, and click a color swatch in the color palette.
6. Click **Layout** menu > **Insert Page Number** > **On All Odd Pages**.
7. Click the tab for page 2.
8. In the Objects docker/ inspector, click the **Options** ⚙️ button, and click **Layer** > **New Master Layer (even pages)**.
9. Add a shape to the top-right corner of the page, and click a different color swatch in the color palette.
10. Click **Layout** menu > **Insert Page Number** > **On All Even Pages**.

To the left of the page tabs, click the **Add Page** ➕ button.

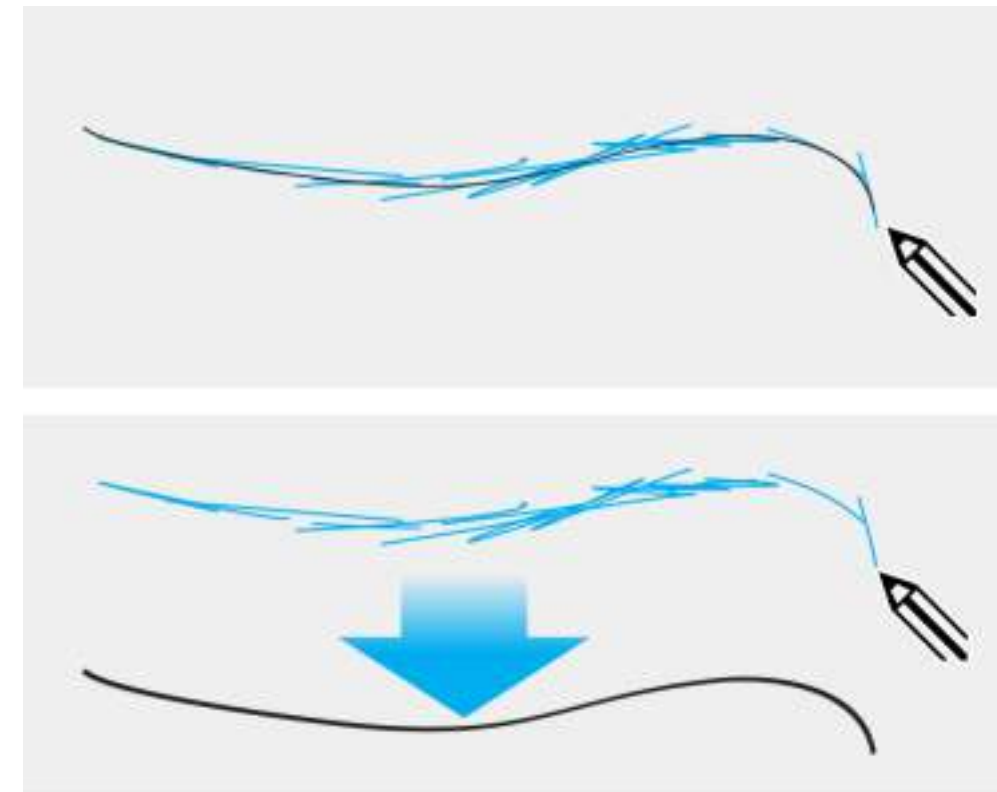
All new pages have the appropriate master layer and page number applied automatically.







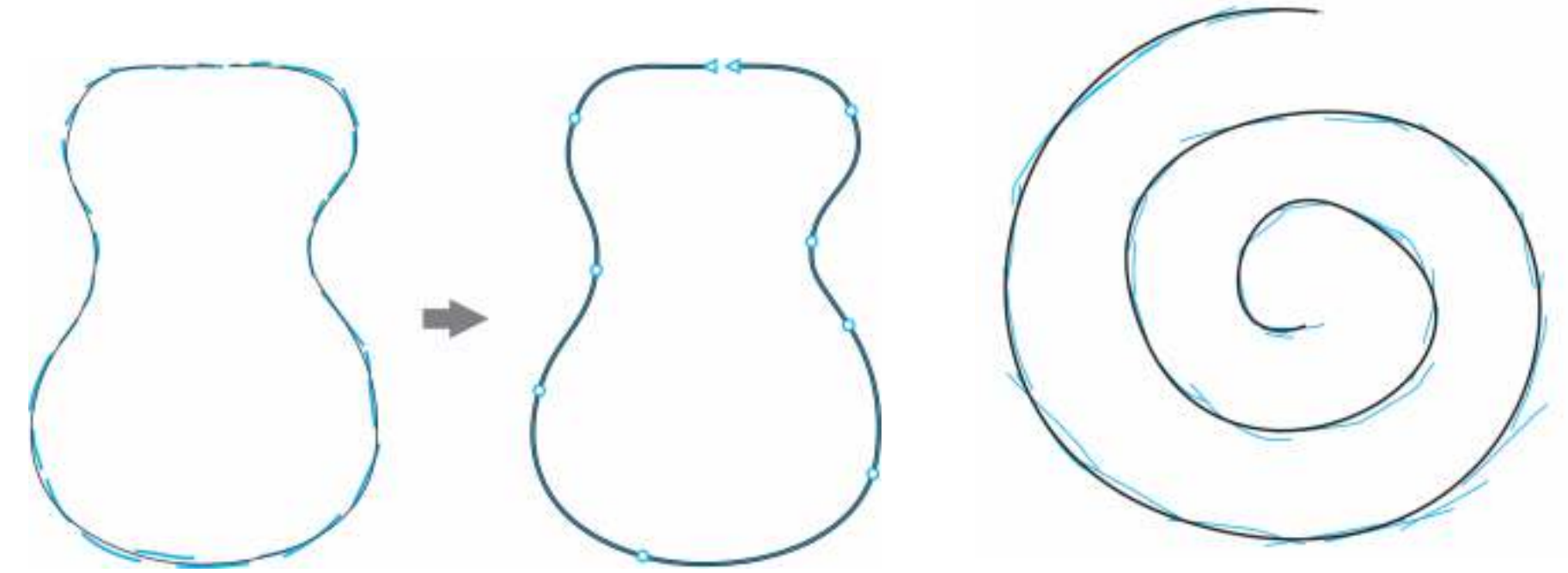
GIVE IT A TRY!

SKETCH WITH VECTOR CURVES

Great when working with a stylus or on a touch-enabled device, the AI-powered LiveSketch tool is perfect for kick-starting a project. Whether you have great sketching skills or you are just learning to sketch, CorelDRAW can adjust your strokes and help you quickly move your ideas from imagination to reality.



1. In the toolbox, click the **LiveSketch**  tool.
2. On the property bar, do any of the following:
 - Set a delay before your strokes are adjusted in the **Timer** box.
By default, the delay is 1 second.
The minimum delay is 0 milliseconds; the maximum is 5 seconds.
Setting a longer delay period gives you more time to manipulate your lines.
 - Click the **Create single curve**  button on the property bar to allow input strokes to be converted into one continuous line. For best results, set a longer delay time. CorelDRAW processes only strokes that are within the specified delay time.
 - Type a value in the Curve smoothing box on the property bar.
Higher values produce smoother curves.
3. Sketch in the document window.
4. You can readjust an existing curve by clicking the **Include curves**  button on the property bar, setting the distance at which existing curves are included into a sketch as new input strokes in the **Distance from curve** box, and sketching over an existing stroke to modify it.
5. To see a stroke preview, click the **Preview mode**  button on the property bar.



SYSTEM REQUIREMENTS



CorelDRAW[®] GRAPHICS SUITE 2019 for Windows

- Windows 10*, 8.1 or Windows 7, in 32-bit or 64-bit, all with latest Updates and Service Packs
- Intel Core i3/5/7 or AMD Athlon 64
- 2 GB RAM
- 2.5 GB hard disk space
- Multi-touch screen, mouse or tablet
- 1280 x 720 screen resolution at 100% (96 dpi)
- Microsoft Internet Explorer 11 or higher
- Microsoft .NET Framework 4.7
- CD drive optional (for box installation)
Installation from CD requires a download of up to 800 MB
- Internet connection is required to install and authenticate CorelDRAW Graphics Suite and access some of the included software components, online features and content. For more information, please visit www.coreldraw.com.

*CorelDRAW Graphics Suite 2019 supports Windows 10, version 1803, 1809 and later versions being released during the lifecycle of CorelDRAW Graphics Suite 2019.

CorelDRAW[®] GRAPHICS SUITE 2019 for Mac

- macOS 10.14, 10.13 or 10.12, with the latest revision
- Multicore Intel processor with 64-bit support, 4 logical cores or higher
- 2 GB RAM (8 GB RAM or more recommended)
- 4 GB hard disk space for application files (Solid-state drive recommended)
- 1280 x 800 screen resolution (1920 x 1080 recommended)
- Mouse or tablet
- Internet connection is required to install and authenticate CorelDRAW Graphics Suite and access some of the included software components, online features and content. For more information, please visit www.coreldraw.com.



ABOUT COREL

One of the world's top software companies, Corel offers some of the industry's most respected and well-known brands, including CorelDRAW[®], Parallels[®], MindManager[®], ClearSlide[®], Pinnacle[™], and WinZip[®]. Across our entire portfolio, Corel's products give today's knowledge workers the tools they need to achieve new levels of creativity, productivity, and success.

For more information, please visit www.corel.com.

Copyright © 2019 Corel Corporation.

CorelDRAW[®] Graphics Suite 2019 Reviewer's Guide

Corel, the Corel logo, the Corel balloon logo, CorelDRAW, the CorelDRAW balloon logo, CorelDRAW.app, AfterShot, CONNECT, Corel PHOTO-PAINT, Font Manager, LiveSketch, Pointillizer, PowerTRACE and Smart Carver are trademarks or registered trademarks of Corel Corporation and/or its subsidiaries in Canada, the United States and/or other countries. All other trademarks mentioned herein are the property of their respective owners.

Patents: www.corel.com/patent

All other trademarks or registered trademarks are the property of their respective owners.

Product specifications, pricing, packaging, technical support and information ("specifications") refer to the retail English version only.

The specifications for all other versions (including other language versions) may vary.

INFORMATION IS PROVIDED BY COREL ON AN "AS IS" BASIS, WITHOUT ANY OTHER WARRANTIES OR CONDITIONS, EXPRESS OR IMPLIED, INCLUDING, BUT NOT LIMITED TO, WARRANTIES OF MERCHANTABILITY, SATISFACTORY QUALITY, MERCHANTABILITY OR FITNESS FOR A PARTICULAR PURPOSE, OR THOSE ARISING BY LAW, STATUTE, USAGE OF TRADE, COURSE OF DEALING OR OTHERWISE. THE ENTIRE RISK AS TO THE RESULTS OF THE INFORMATION PROVIDED OR ITS USE IS ASSUMED BY YOU. COREL SHALL HAVE NO LIABILITY TO YOU OR ANY OTHER PERSON OR ENTITY FOR ANY INDIRECT, INCIDENTAL, SPECIAL, OR CONSEQUENTIAL DAMAGES WHATSOEVER, INCLUDING, BUT NOT LIMITED TO, LOSS OF REVENUE OR PROFIT, LOST OR DAMAGED DATA OR OTHER COMMERCIAL OR ECONOMIC LOSS, EVEN IF COREL HAS BEEN ADVISED OF THE POSSIBILITY OF SUCH DAMAGES, OR THEY ARE FORESEEABLE. COREL IS ALSO NOT LIABLE FOR ANY CLAIMS MADE BY ANY THIRD PARTY. COREL'S MAXIMUM AGGREGATE LIABILITY TO YOU SHALL NOT EXCEED THE COSTS PAID BY YOU TO PURCHASE THE MATERIALS. SOME STATES/COUNTRIES DO NOT ALLOW EXCLUSIONS OR LIMITATIONS OF LIABILITY FOR CONSEQUENTIAL OR INCIDENTAL DAMAGES, SO THE ABOVE LIMITATIONS MAY NOT APPLY TO YOU.

CorelDRAW[®] 
GRAPHICS SUITE 2019

Media contact:
media@corel.com