



# User's Guide

**Shop online at**

**omega.com<sup>®</sup>**

Ω OMEGA<sup>®</sup>

**omega.com**

**e-mail: info@omega.com**

**For latest product manuals:  
omegamanual.info**

**ISO 9001**  
CERTIFIED  
CORPORATE QUALITY

STAMFORD, CT

**ISO 9001**  
CERTIFIED  
CORPORATE QUALITY

MANCHESTER, UK

MADE IN TAIWAN



# HH126, HH127 and HH176 Software Operation Instructions



<b>OMEGAnet® Online Service</b> <b>omega.com</b>	<b>Internet e-mail</b> <b>info@omega.com</b>
---	---

**Servicing North America:**

**U.S.A.:** Omega Engineering, Inc., One Omega Drive, P.O. Box 4047  
ISO 9001 Certified Stamford, CT 06907-0047  
Toll-Free: 1-800-826-6342 Tel: (203) 359-1660  
FAX: (203) 359-7700 e-mail: info@omega.com

**Canada:** 976 Bergar  
Laval (Quebec), Canada H7L 5A1  
Toll-Free: 1-800-826-6342 TEL: (514) 856-6928  
FAX: (514) 856-6886 e-mail: info@omega.ca

**For immediate technical or application assistance:**

**U.S.A. and Canada:** Sales Service: 1-800-826-6342/1-800-TC-OMEGA®  
Customer Service: 1-800-622-2378/1-800-622-BEST®  
Engineering Service: 1-800-872-9436/1-800-USA-WHEN®

**Mexico:** En Español: 001 (203) 359-7803 FAX: (001) 203-359-7807  
info@omega.com.mx e-mail: espanol@omega.com

**Servicing Europe:**

**Benelux:** Managed by the United Kingdom Office  
Toll-Free: 0800 099 3344 TEL: +31 20 347 21 21  
FAX: +31 20 643 46 43 e-mail: sales@omega.nl

**Czech Republic:** Frystatska 184  
733 01 Karviná, Czech Republic  
Toll-Free: 0800-1-66342 TEL: +420-59-6311899  
FAX: +420-59-6311114 e-mail: info@omegashop.cz

**France:** Managed by the United Kingdom Office  
Toll-Free: 0800 466 342 TEL: +33 (0) 161 37 29 00  
FAX: +33 (0) 130 57 54 27 e-mail: sales@omega.fr

**Germany/Austria:** Daimlerstrasse 26  
D-75392 Deckenpfronn, Germany  
Toll-Free: 0 800 6397678 TEL: +49 (0) 7059 9398-0  
FAX: +49 (0) 7056 9398-29 e-mail: info@omega.de

**United Kingdom:** OMEGA Engineering Ltd.  
ISO 9001 Certified One Omega Drive, River Bend Technology Centre, Northbank  
Irlam, Manchester M44 5BD England  
Toll-Free: 0800-488-488 TEL: +44 (0)161 777-6611  
FAX: +44 (0)161 777-6622 e-mail: sales@omega.co.uk

---

It is the policy of OMEGA Engineering, Inc. to comply with all worldwide safety and EMC/EMI regulations that apply. OMEGA is constantly pursuing certification of its products to the European New Approach Directives. OMEGA will add the CE mark to every appropriate device upon certification. The information contained in this document is believed to be correct, but OMEGA accepts no liability for any errors it contains, and reserves the right to alter specifications without notice.  
**WARNING:** These products are not designed for use in, and should not be used for, human applications.

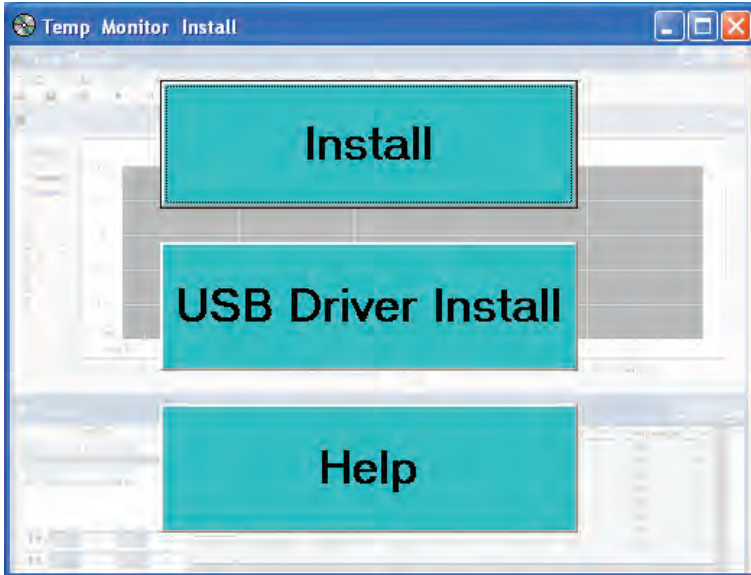
# **1. Installation/remove**

## **1.1 The minimum hardware requirements for Temp Monitor software are:**

- **Windows 98/ Windows 2000/Windows XP (Windows 2000/Windows XP are recommended)**
- **Pentium 133-megahertz (MHz) processor or faster (300 MHz is recommended)**
- **At least 64 megabytes (MB) of RAM (256 MB is recommended)**
- **At least 250 megabytes (MB) of available space on the hard disk**
- **CD/ DVD-ROM driver**
- **Keyboard and a Microsoft Mouse or some other compatible pointing device**
- **Video adapter and monitor with Super VGA (800 x 600) or higher resolution**
- **This software supports Excel to save/open files function, if needed please install Microsoft Excel 2000/2003.**

## 1.2 Installation

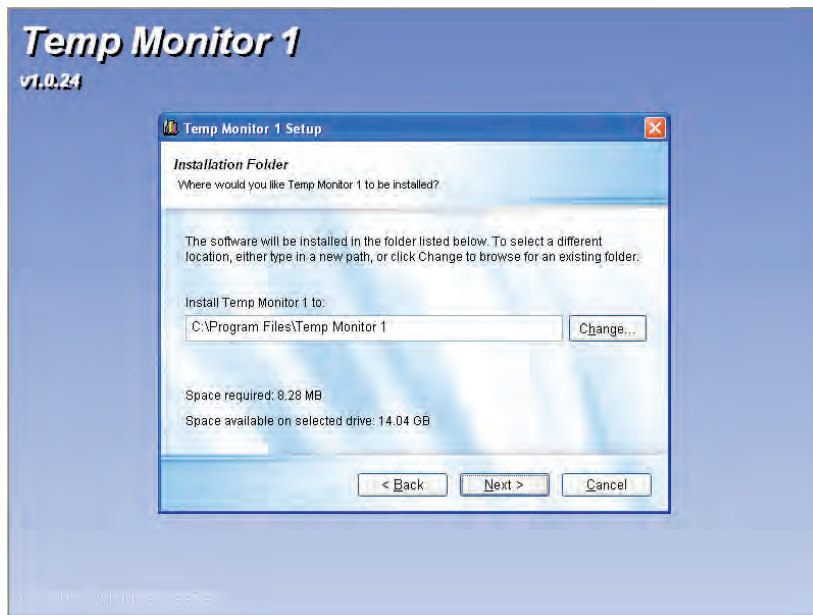
**Notice: Before you go on-line with the thermometer, you first need to install the software and USB driver on a Windows platform.**



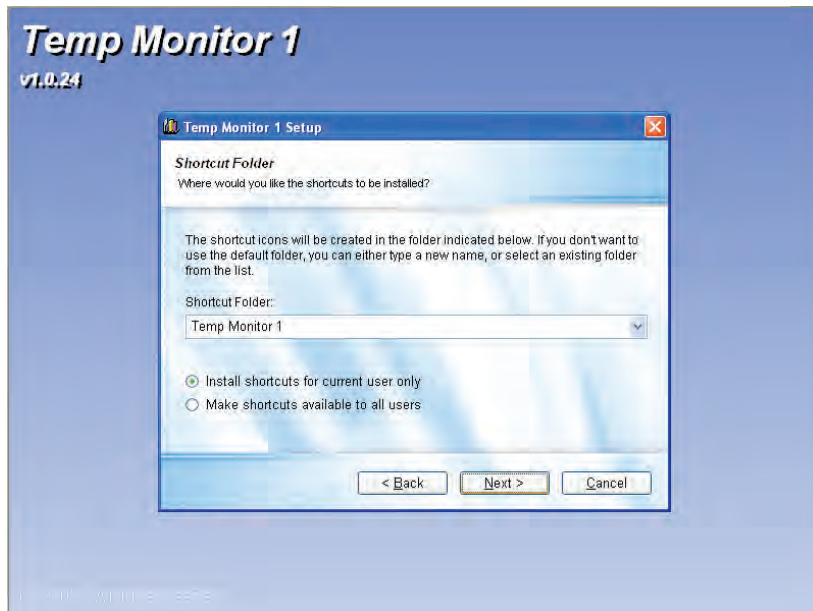
**1. Insert CD-ROM in the CD-ROM driver of the PC. Manual is down loaded automatically. If the manual can't be down loaded automatically, double click the CD-ROM icon, double click "autorun.exe".**

**2. Install Temp Monitor 1 software, click in spring "Install" of the menu or browse "setup.exe" of the CD-ROM and install. (D:\setup.exe -Suppose D is a CD-ROM driver)**

**When installing, the following picture will appear.**



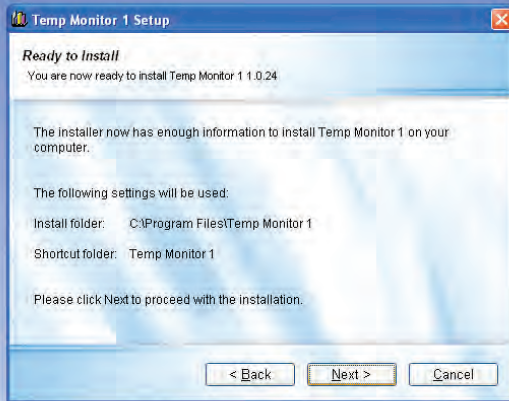
**click "Next"**



**click "Next"**

# Temp Monitor 1

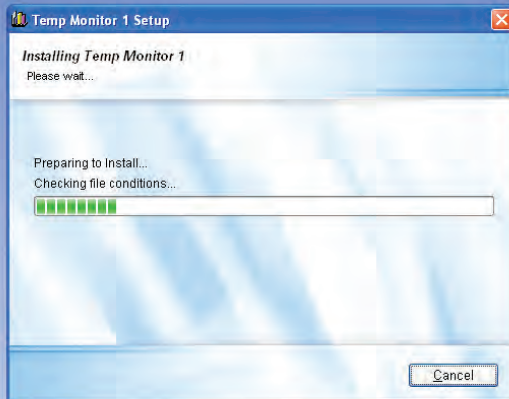
v1.0.24



click "Next"

# Temp Monitor 1

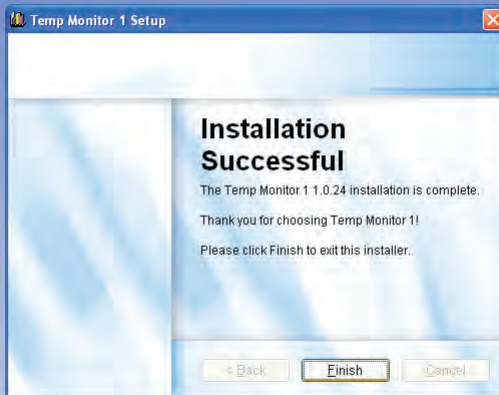
v1.0.24



The file is being copied onto the computer.

# Temp Monitor 1

v1.0.24



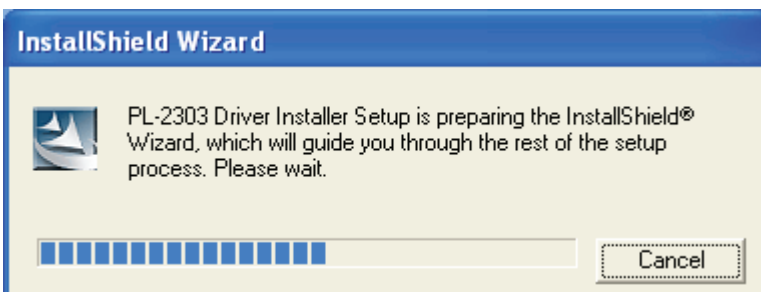
(C) 2005 - All rights reserved.

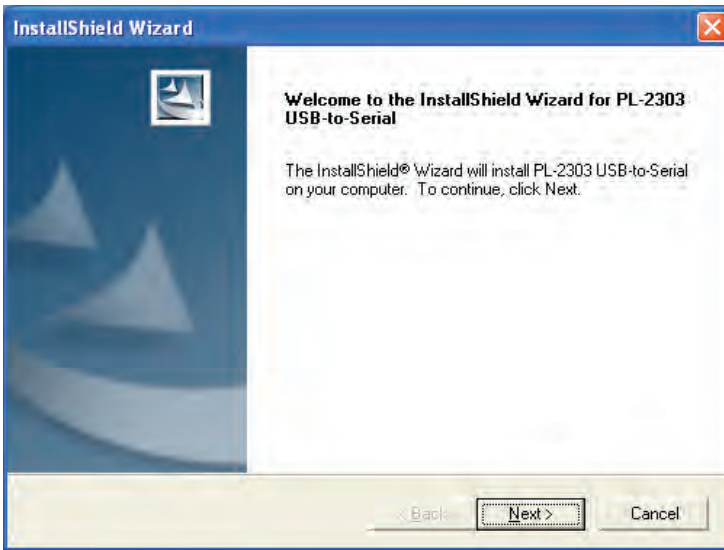
When the above picture appears during software installation of Temp Monitor 1 click “Finish”.

3. Install USB driver, click in “USB Driver Install” springing in menus automatically or browse “PL-2303 Driver Installer.exe” of the CD-ROM and install.

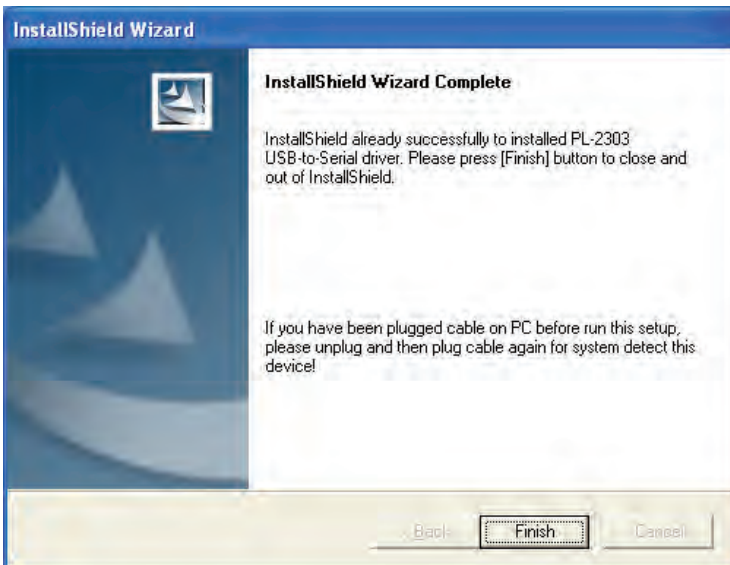
(D:\PL-2303 Driver Installer.exe-Suppose D is a CD-ROM driver)

When installing, the following picture will appear:





**click “Next”**



**When the above picture appears during software installation of USB driver, click “Finish”. Note: The CD-ROM that inserts the PC will then be taken out of the CD-ROM driver.**

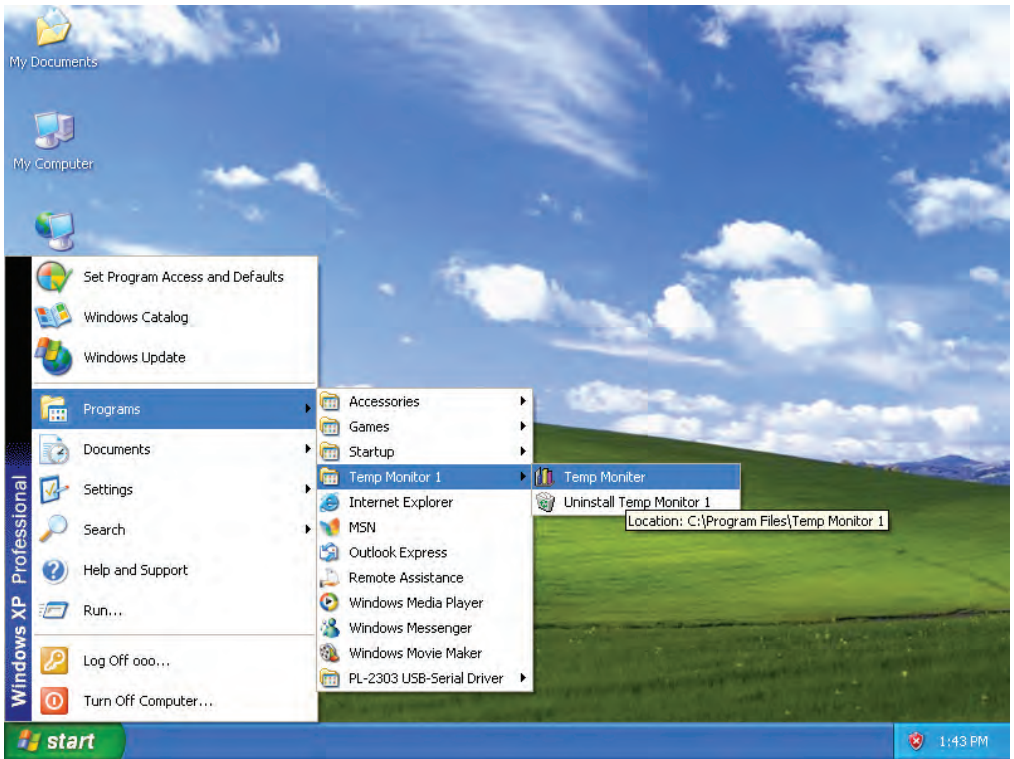


## **1.3 Remove Temp Monitor 1 and USB driver**

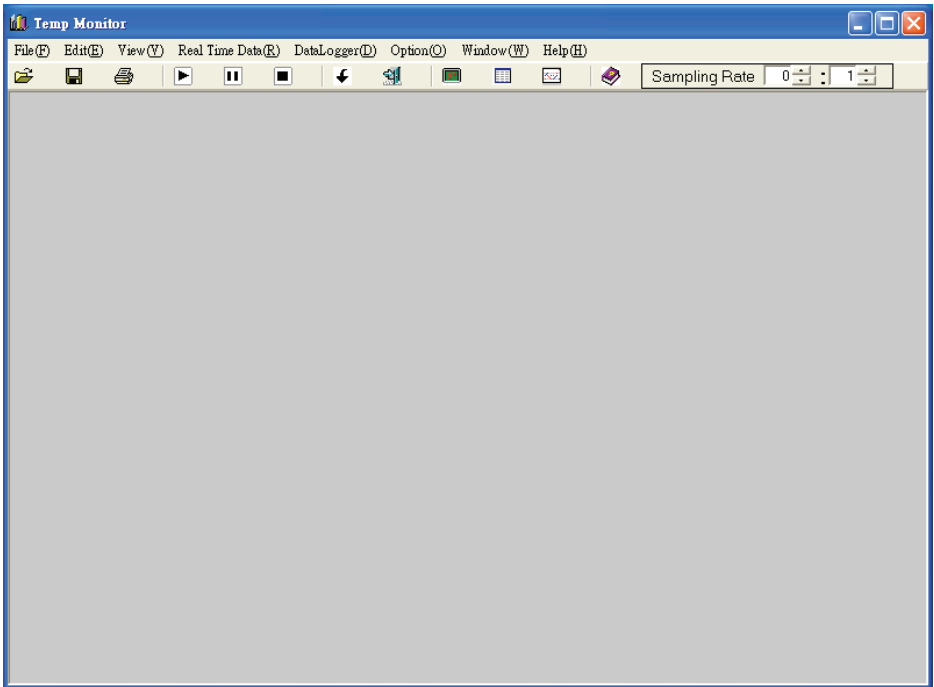
- 1. To close the use software first**
- 2. Click “start”.**
- 3. Click “programs” → “Temp Monitor 1” → “Uninstall Temp Monitor 1” to uninstall.**
- 4. Click “start”.**
- 5. Click “programs” → “PL-2303 USB-Serial Driver” → “Uninstall” to uninstall.**

## 2. On-line/download to PC

1. For USB wire/RS-232 wire to connect PC and thermometer well
2. Click “start” → programs → Temp Monitor 1 → Temp Monitor.

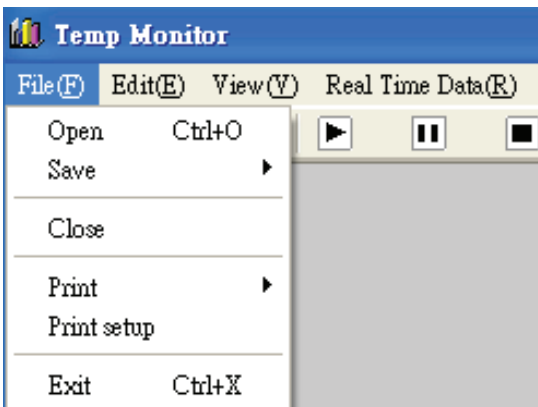




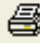

### 3. Picture of the software.



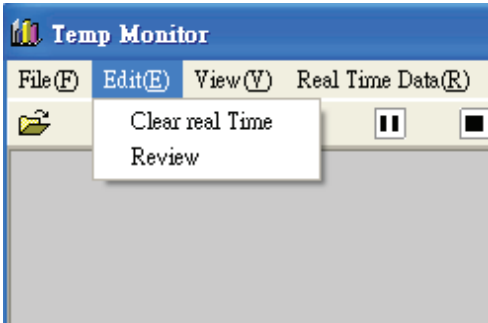
### 2.1 Brief introduction of every function:

#### File menu:



- Open  : open file.
- Save  : save file.
- Close: Close picture.  
while carrying out.
- Print  : print file.
- Print setup: Set up printer
- Exit  : Finish program.

## Edit menu:

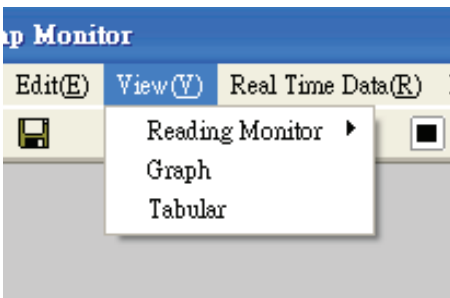


**Clear real Time: Remove record data.**

**Review: The window GRAPH is described again.**

**Notice: Clear real Time uses the record data to clear under the real time recording mode. Please consult page 10 Real Time Data menu to carry out record data to clear.**

## View menu:

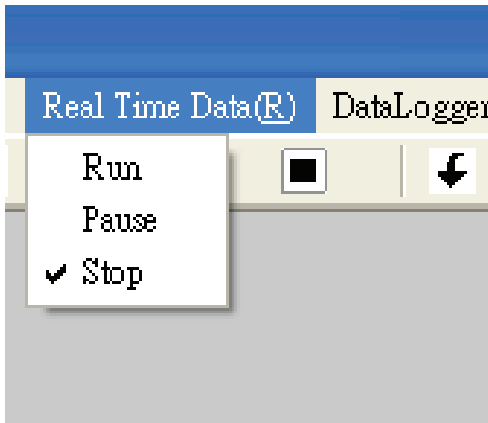


**Reading Monitor : open/close Reading Monitor window.**

**Graph : open/close Graph window.**


**Tabular : open/close Tabular window.**

## Real Time Data menu:

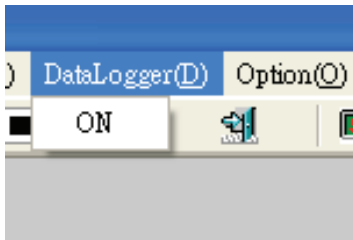


Run  : on-line, carry out Real Time function.

Pause  : Real Time record is suspended

Stop  : off-line (off-line with Meter)

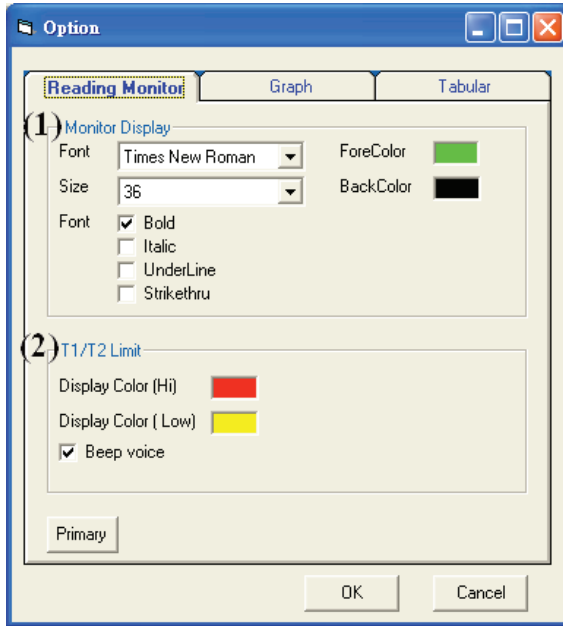
## DataLogger menu:



ON  : Loaded the record data of data logger from METER to PC.

# Option menu:

① **Reading Monitor -The reading of selects and sets up.**



## (1) Monitor Display

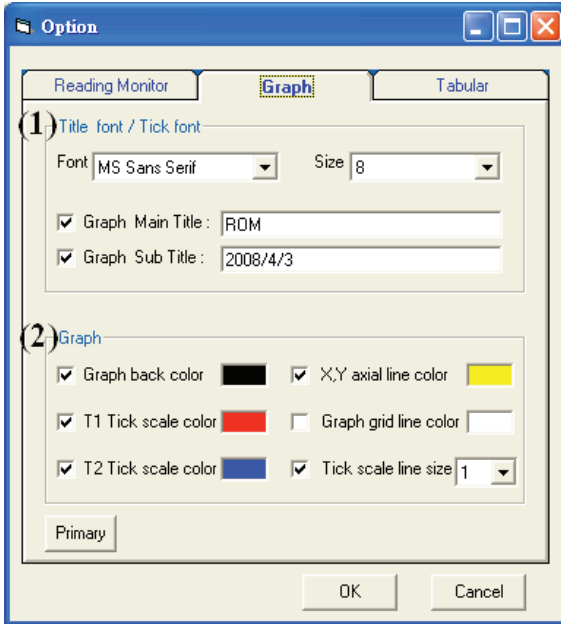
Set up style, size of script, the color and background color of the reading window.

## (2) T1/T2 Limit (T1/T2 critical value restraint in setting up)

Set up warning background color and the opening and closing of the warnings of the maximum, minimum critical value. It is not recommended to use the white color as a warning background color.

Primary button can be returned to initial selects.

## ② Graph- graph selects and sets up



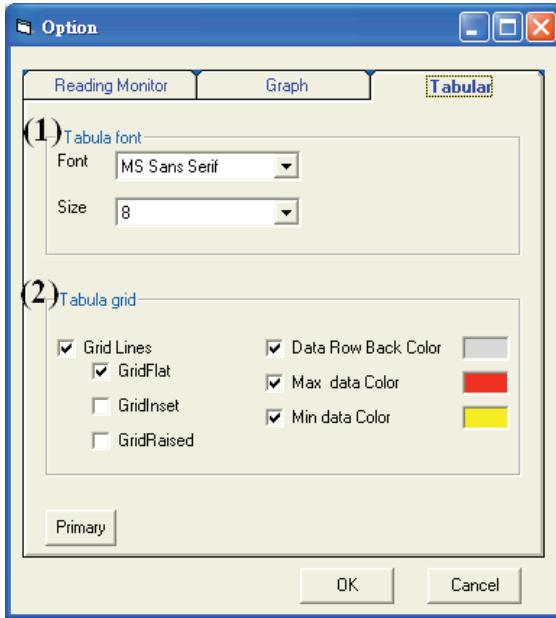
**(1) Title font/Tick font (the style of title/the style of the mark sets up)**

**Set up style of the title, subtitle and mark and size of script.**

**(2) Graph-graph window picture sets up**

**Set up the background color of the graph window, T1, T2 graph, cross axle, grid color are set up, T1, T2 graph thickness are set up. You can also select to determine whether to show on the graph a window picture or not. Primary button can be returned to initial selects.**

### ③ Tabular-The form selects and sets up.

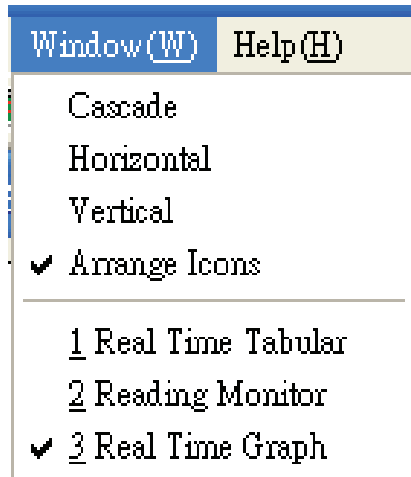


**(1) Tabular font (The style of the form sets up)**  
Set up the style of form and size of script.

**(2) Tabular grid (The form grid sets up)**  
Set up grid type, background form color and maximum, minimum value and label color.  
Primary button can be returned to initial selects.



## Window menu:



**Cascade:** cascade arrange.

**Horizontal:** horizontal arrange.

**Vertical:** vertical arrange.

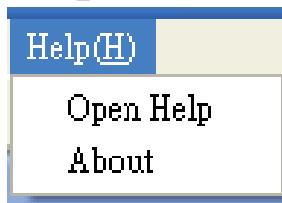
**Arrange Icons:** arrange icon.


**Real Time Tabular:** Select Tabular window as the window in function.

**Reading Monitor:** Select Reading Monitor window as the window in function.

**Real Time Graph:** Select Graph window as the window in function.

## Help menu:



**Open Help**  :open Help file.

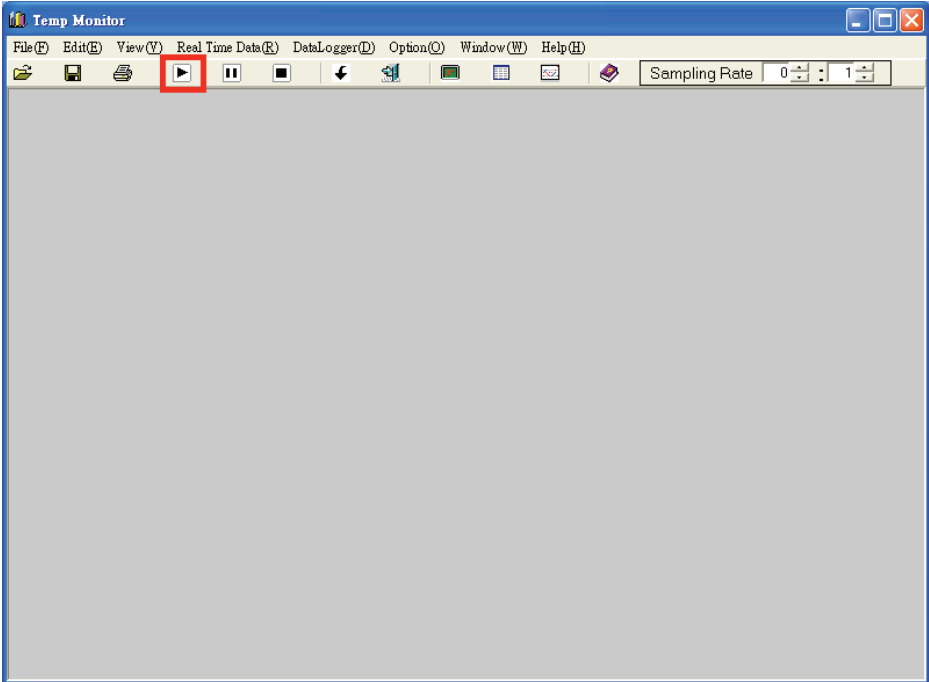
**About:** The edition declares.

## Interval of on-line record of Real Time:

**Only Real Time has this function, from 00 minute and 01 second to 59 minutes and 59 seconds.**



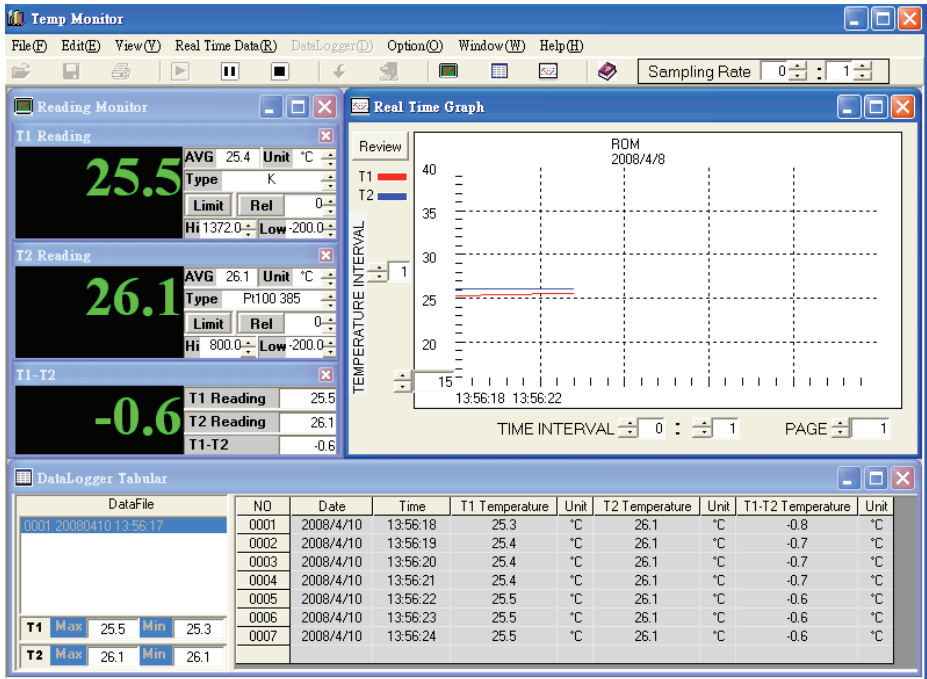
## 2.2 Carry out Real Time:



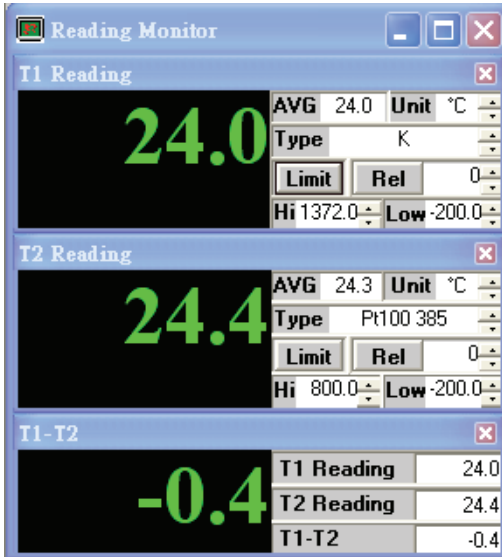
2.The software on- line will have the following picture:



### 3.Operation picture



## 2.3 Brief introduction of every window function: Reading Monitor window



**AVG:** average value.

**Unit:** temperature unit choose, °C or °F.

**Type:** thermocouple Type form is chosen, it is determined that optional

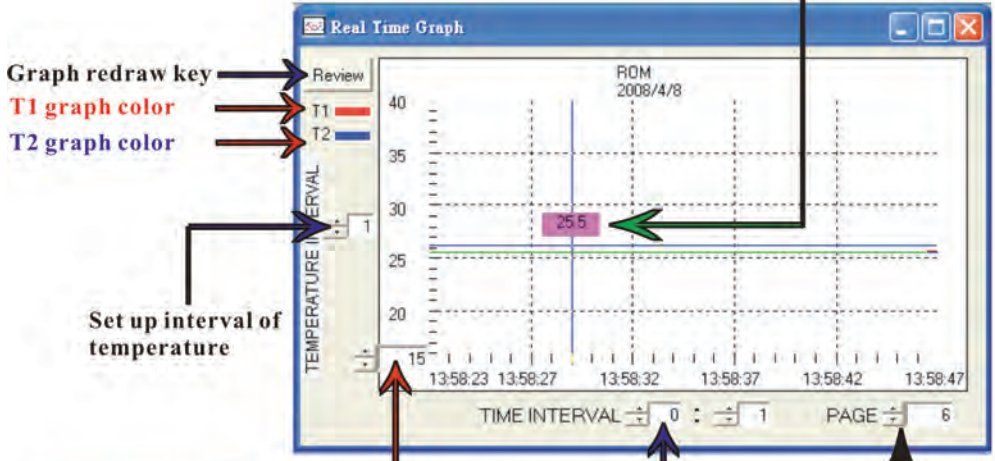
Type is set up by Meter function.

**Rel:** The setting up value of Rel, press the function key of Rel, the window shows Rel symbol, the showing reading reduces the setting up value of Rel.

**Limit & Hi/Low:** The setting up value of Hi Low, upper and lower limit are decided by Type chosen, press the function key of Limit from Type, the window shows Limit symbol. When the reading is greater than the setting up value of Hi, the window turns into sets up color of Hi, at the same time the PC will display a warning. When the reading is smaller than the setting up value of Low, the window sets up color of Low, and sends out the warnings to the PC at the same time.

# Real Time Graph window:

Graph that cross line catches can show temperature value in picture.



Graph redraw key

T1 graph color

T2 graph color

Set up interval of temperature

Set up minimum scale value of temperature, upper and lower limits are decided by TYPE selected.

Set up time in the interval of scale, max 59 minutes and 59 seconds, min 0 minute and 1 second.

PAGE: max 400 pages


# Tabular window:

DataFile		ND	Date	Time	T1 Temperature	Unit	T2 Temperature	Unit	T1-T2 Temperature	Unit
0002	20080403 14:58:34	0015	2008/4/3	15:45:45	24.1	°C	29.0	°C	-4.9	°C
0003	20080403 15:23:37	0016	2008/4/3	15:45:46	24.1	°C	29.6	°C	-5.5	°C
0004	20080403 15:23:39	0017	2008/4/3	15:45:47	24.1	°C	29.9	°C	-5.8	°C
0005	20080403 15:23:44	0018	2008/4/3	15:45:48	24.1	°C	29.9	°C	-5.8	°C
0006	20080403 15:23:46	0019	2008/4/3	15:45:49	24.1	°C	29.9	°C	-5.8	°C
0007	20080403 15:45:30	0020	2008/4/3	15:45:50	24.1	°C	29.9	°C	-5.8	°C
		0021	2008/4/3	15:45:51	24.1	°C	29.8	°C	-5.7	°C

T1	Max	24.1	Min	24.1
T2	Max	29.9	Min	24.5

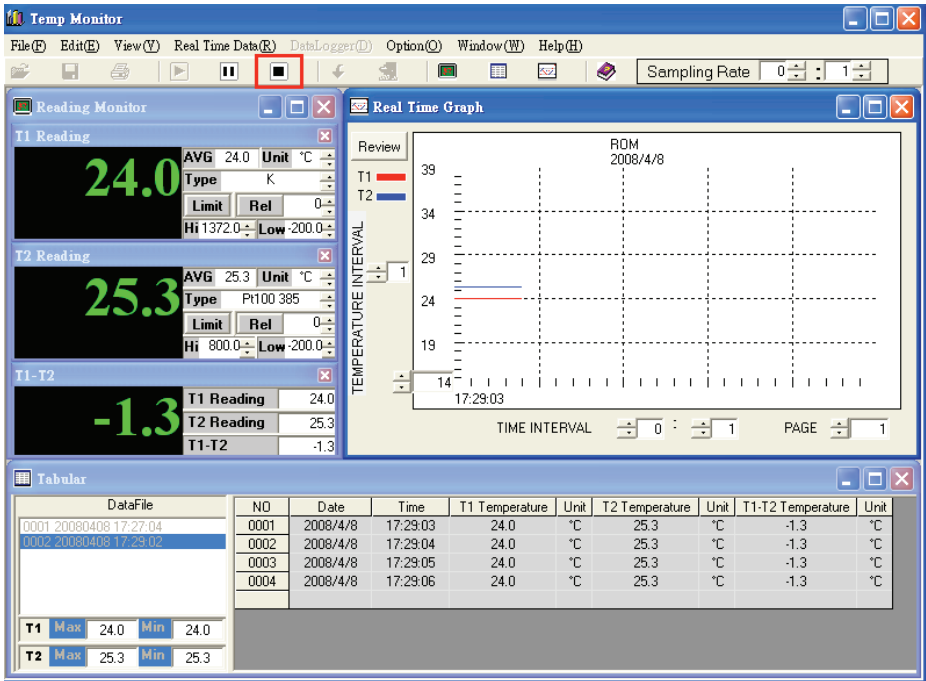
**DataFile :** The seat files temporarily for recorded value, each file can record 9999 record data. Exceeding 9999 will change the new recorded value file and continue to record temporarily automatically.

**Notice:** If you want to save the data then please select files temporarily in DataFile and press  or "Save" of File of menu. If you want to delete a recorded file in DataFile, click the file you want to delete, then press mouse right key or choose Clear real Time of Edit of menu.

**T1/T2:T1/T2** maximum, minimum value of recorded value, press MAX or MIN to find the relative recorded value in the recorded list.

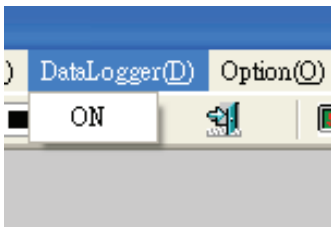
## 2.4 Carry out Data Logger download data:

**Notice:** Before making the download data of Data Logger, if you used Real Time function, then please stop Real Time saving first, then carry on Data Logger download data.



## 1. Start Data Logger download data:

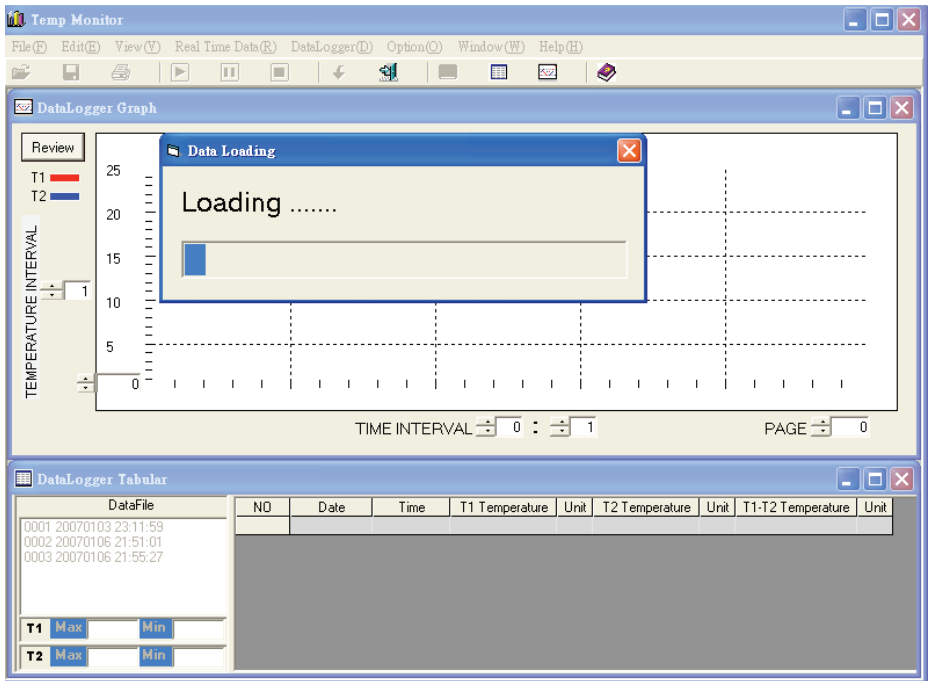
Click  of picture function keys or “ON” of Data Logger menu.



2.The software on-line will have the following picture:

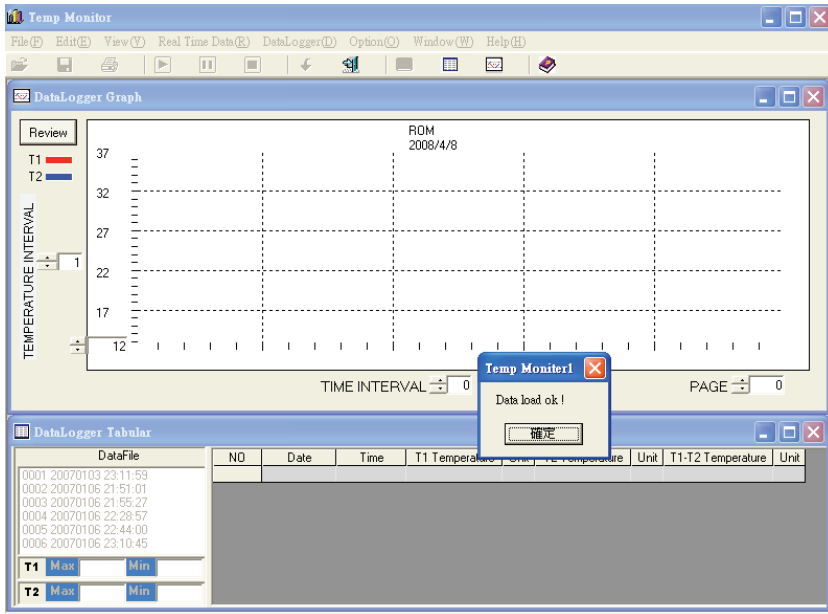


3.The picture of download data after on-line

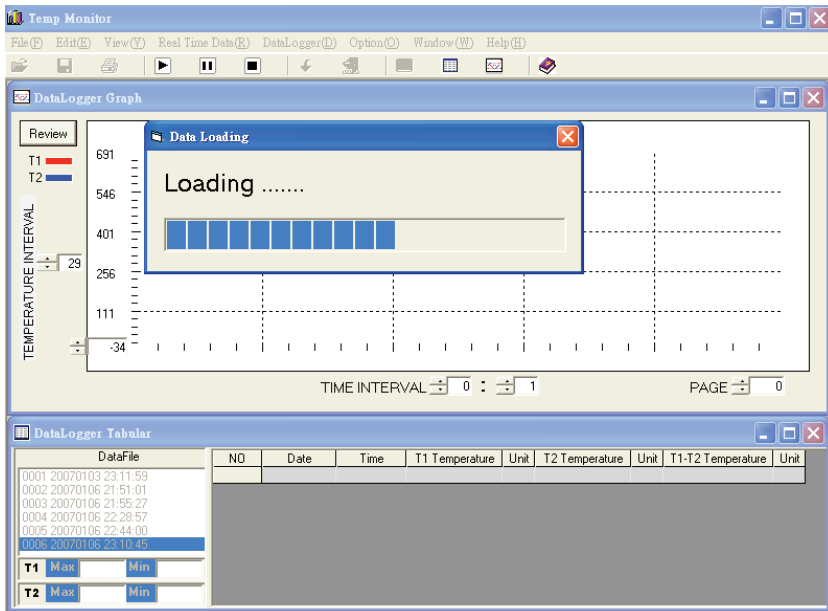




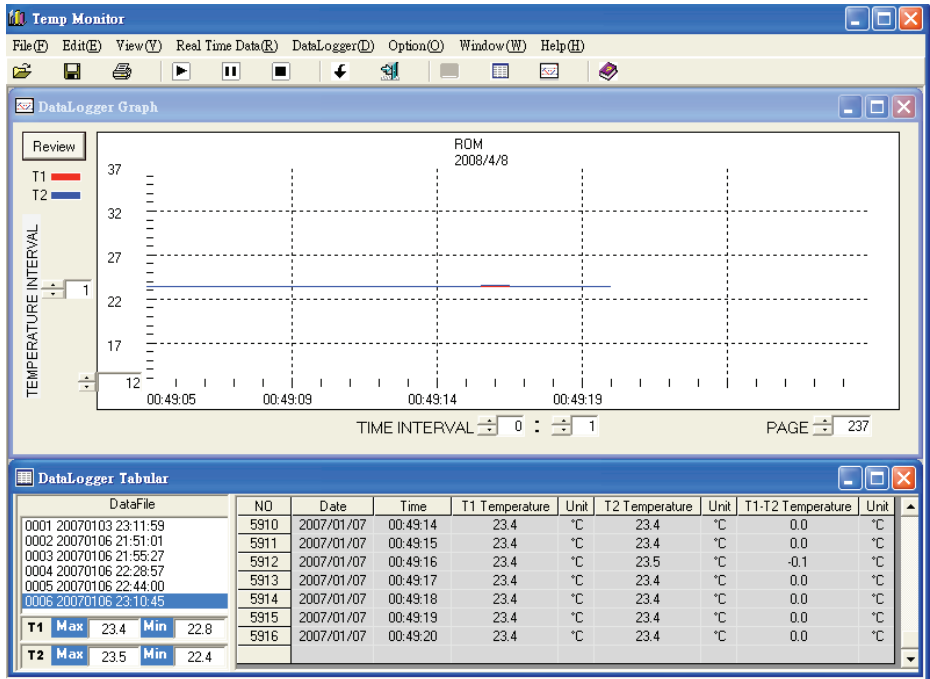
## 4. The download data finished picture



## 5. Open download data picture



## 6. Download data open the picture of finishing

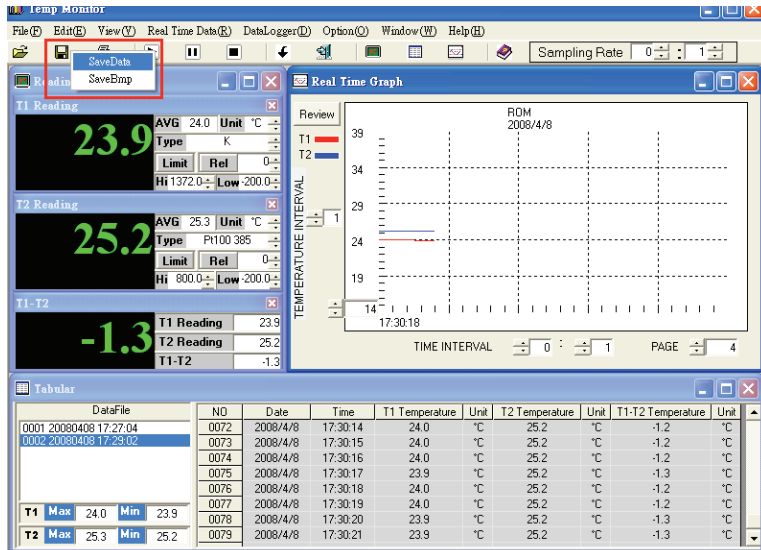


## 2.5 Save files:

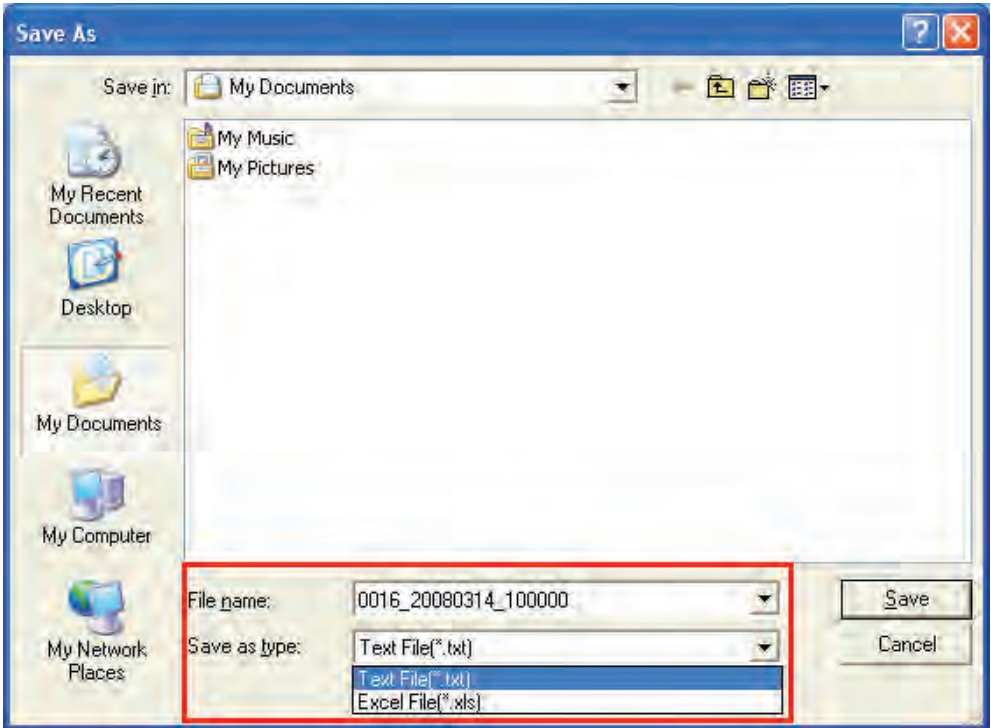
**Notice: Before saving data, if you used Real Time function, please stop Real Time first, and then carry on “SAVE” data.**



1. Click record temporary file in DataFile then to click  or “Save” of File menu.



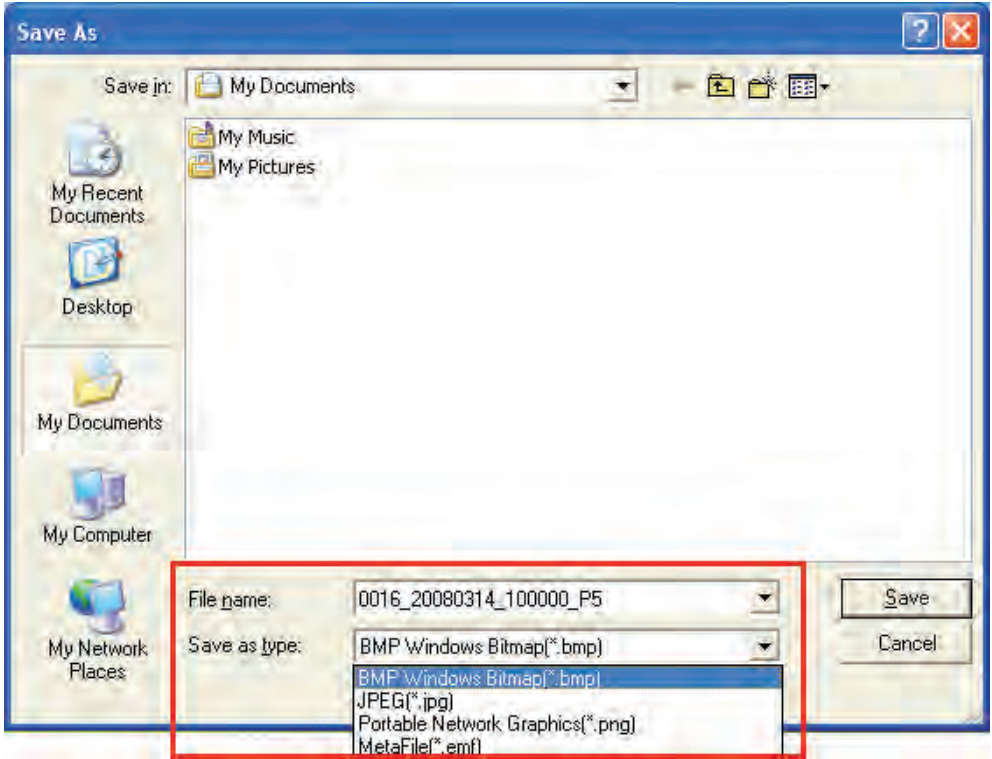
## 2. Choose SaveData picture



**Left side functions of pictures are arranged with draw menu's in the saved position. The type can be revised below to change a file name or type of saved file being scheduled type of saving is \*.txt. If you wish to change save type to \*.xls, please change the picture.**

**Notice: Data Logger data are also saved to files this way too.**

### 3. Choose SaveBMP picture



**Left side functions of pictures are arranged with draw menu's in the saved position. The type can be revised below to change a file name or type of saved file being scheduled type of saving is \*.BMP. If you wish to change saved type to \*.jpg, \*.png or \*.emf, please change by the picture. Notice: Data Logger data are also saved to files this way too.**

## 2.6 Open - open old file:

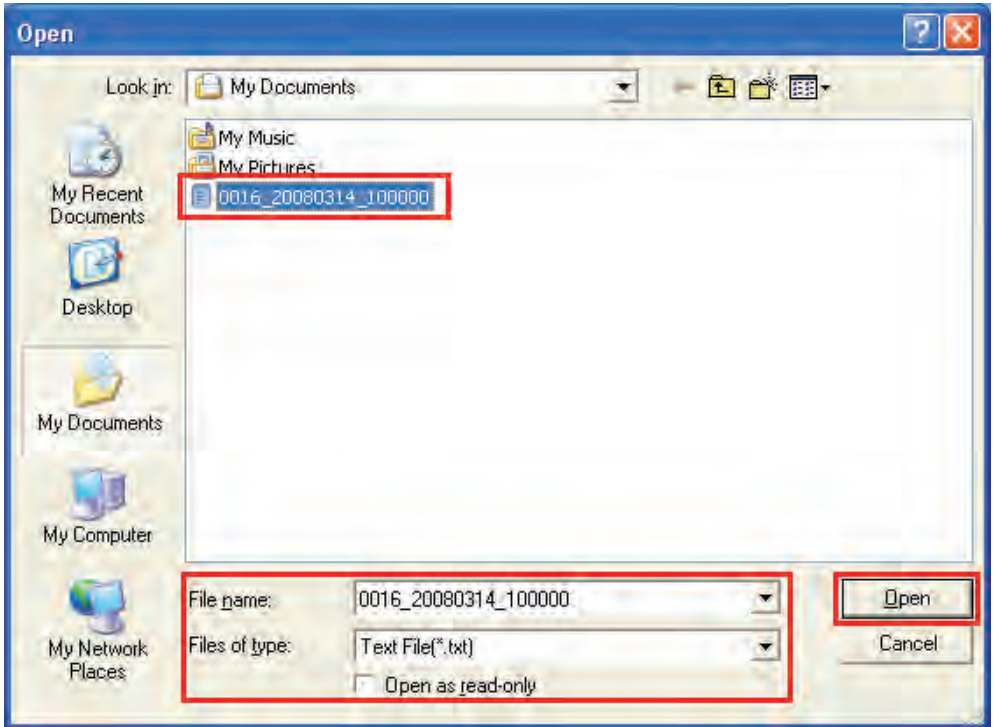
Notice: Before printing data, if you used Real Time function, please stop Real Time first, and then carry on OPEN -open old file.



1. Click record temporary file in DataFile then to click or “Open” of File menu.

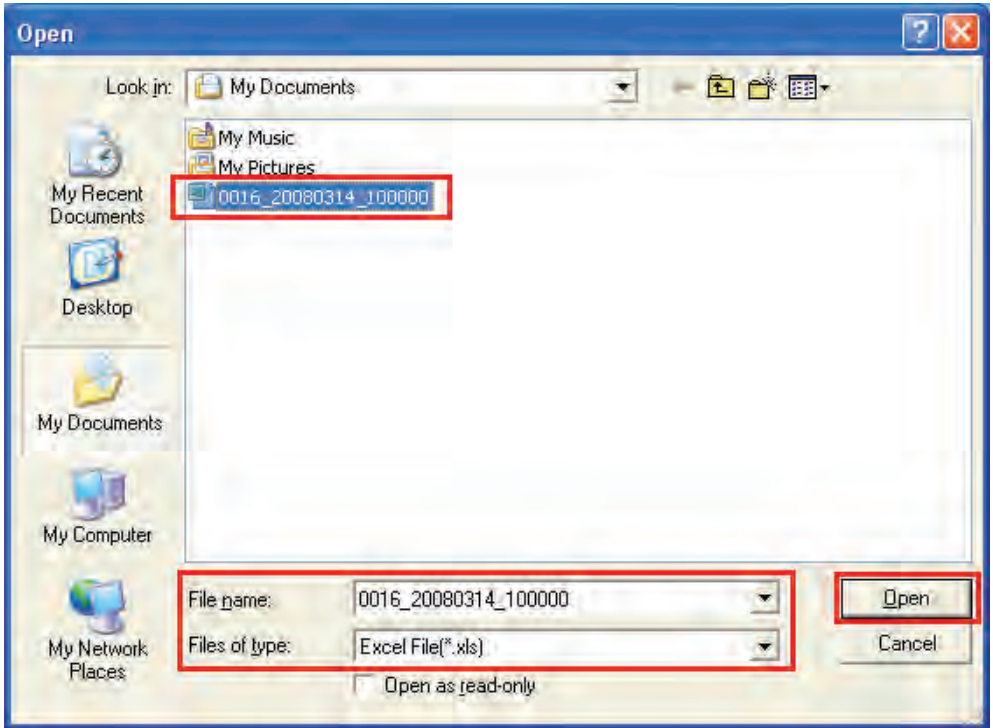


## 2. Choose picture of file:

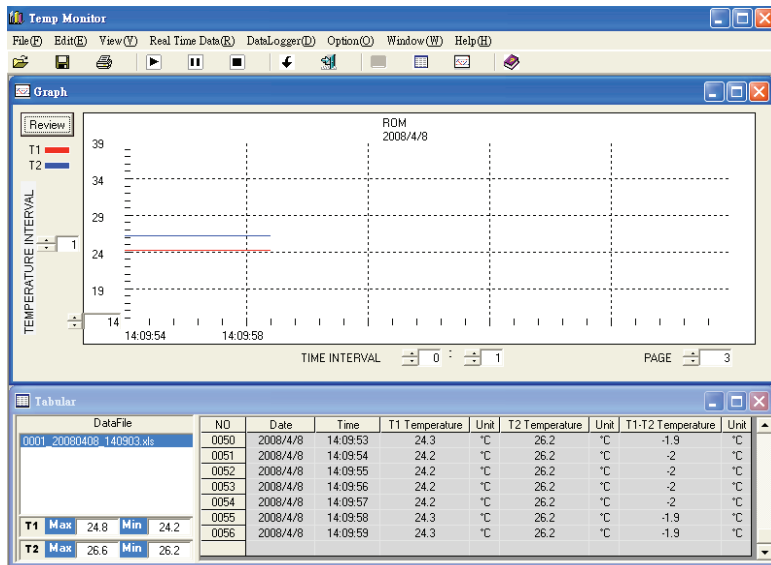


**Press “open” of the lower right corner after choosing the file you wanted to open.**

**If the open file of type is different please open according to down picture.**



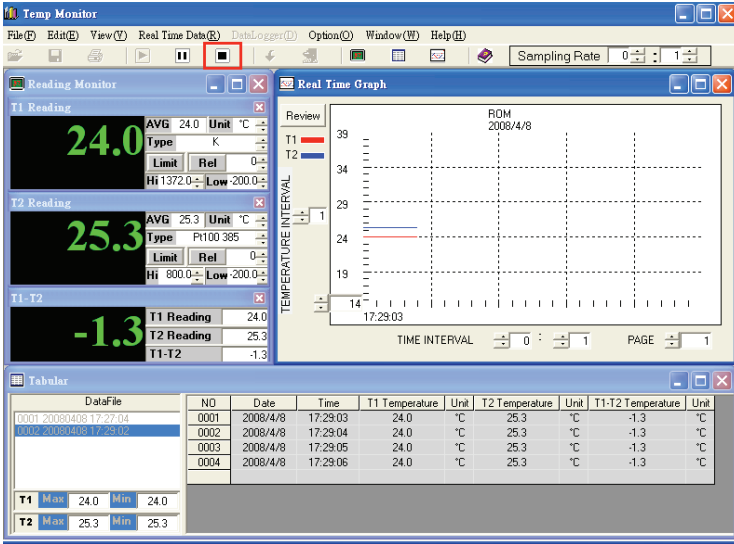
### 3. Open picture of finished



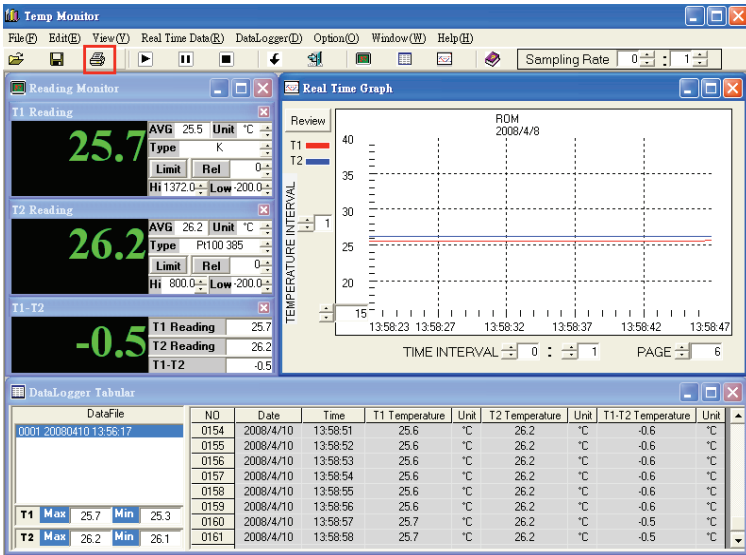


# 2.7 Print types the file:

Notice: Before printing data, if you used Real Time function, please stop Real Time first, and then Print data.



1. Click record temporary file in DataFile then to click  or “Print” of File menu.



## 2. Choose the print type



### (1) Print Graph type picture.

This function prints in the Graph window picture at present. To choose the printer window after clicking, please choose the type of printer by clicking the print button of the printer.

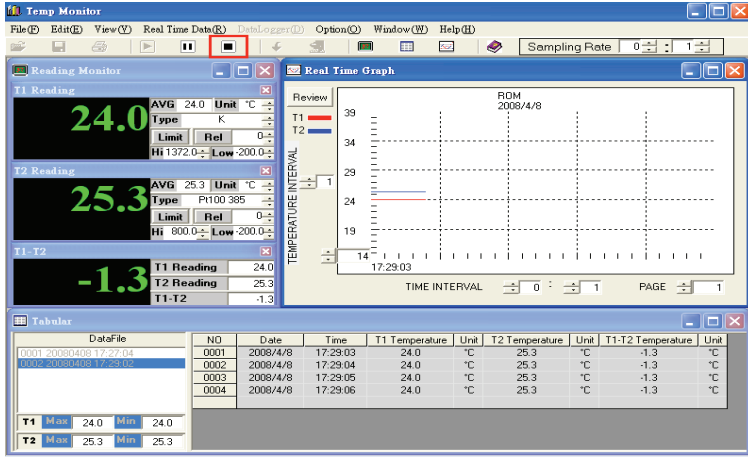
**Notice:** Before printing Graph window picture, please use the Graph of Option to set up the window first.

### (2) Print Tabular of form content:

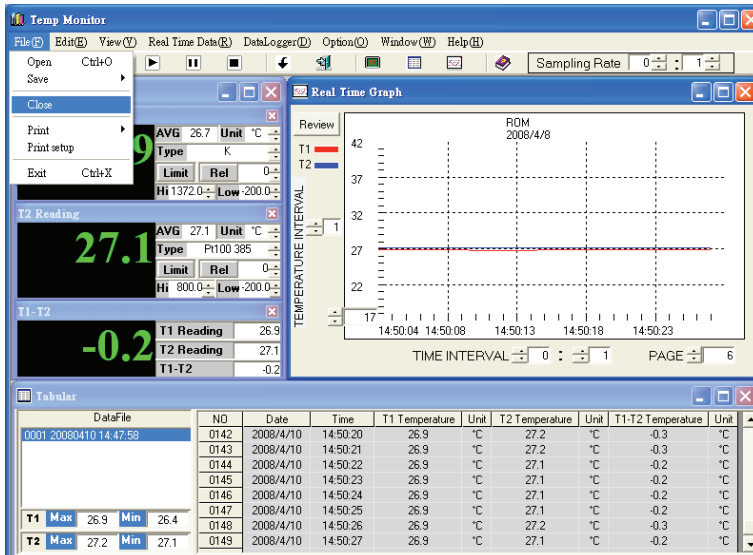
This function is set up to print the form content at Tabular window. To choose the printer window please choose the type of printer by clicking the print button that will be printed.

## 2.8 Close the picture while carrying out:

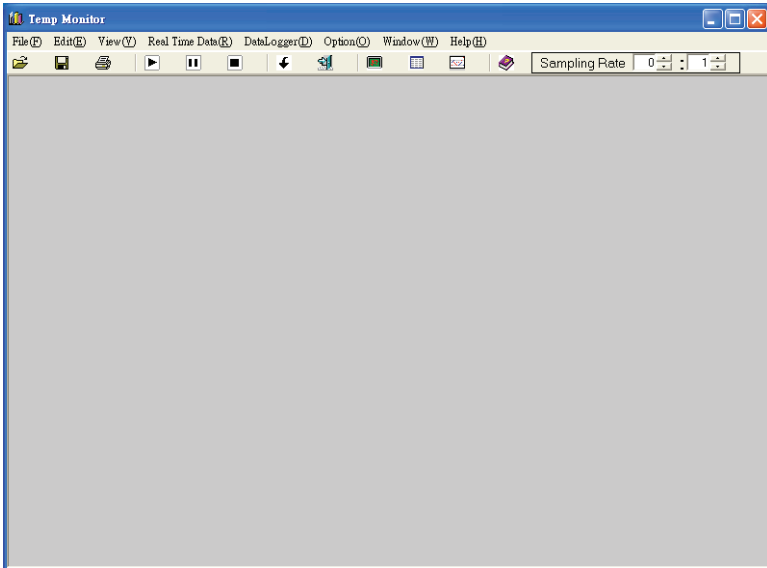
Notice: Before closing the picture while carrying out, if you used Real Time function, please stop Real Time first, and then close the picture while carrying out.



## 1. Click Close in menu of File.



## 2. Picture after carry out.





## WARRANTY/DISCLAIMER

OMEGA ENGINEERING, INC. warrants this unit to be free of defects in materials and workmanship for a period of **13 months** from date of purchase. OMEGA's WARRANTY adds an additional one (1) month grace period to the normal **one (1) year product warranty** to cover handling and shipping time. This ensures that OMEGA's customers receive maximum coverage on each product.

If the unit malfunctions, it must be returned to the factory for evaluation. OMEGA's Customer Service Department will issue an Authorized Return (AR) number immediately upon phone or written request. Upon examination by OMEGA, if the unit is found to be defective, it will be repaired or replaced at no charge. OMEGA's WARRANTY does not apply to defects resulting from any action of the purchaser, including but not limited to mishandling, improper interfacing, operation outside of design limits, improper repair, or unauthorized modification. This WARRANTY is VOID if the unit shows evidence of having been tampered with or shows evidence of having been damaged as a result of excessive corrosion; or current, heat, moisture or vibration; improper specification; misapplication; misuse or other operating conditions outside of OMEGA's control. Components in which wear is not warranted, include but are not limited to contact points, fuses, and triacs.

**OMEGA is pleased to offer suggestions on the use of its various products. However, OMEGA neither assumes responsibility for any omissions or errors nor assumes liability for any damages that result from the use of its products in accordance with information provided by OMEGA, either verbal or written. OMEGA warrants only that the parts manufactured by the company will be as specified and free of defects. OMEGA MAKES NO OTHER WARRANTIES OR REPRESENTATIONS OF ANY KIND WHATSOEVER, EXPRESSED OR IMPLIED, EXCEPT THAT OF TITLE, AND ALL IMPLIED WARRANTIES INCLUDING ANY WARRANTY OF MERCHANTABILITY AND FITNESS FOR A PARTICULAR PURPOSE ARE HEREBY DISCLAIMED. LIMITATION OF LIABILITY: The remedies of purchaser set forth herein are exclusive, and the total liability of OMEGA with respect to this order, whether based on contract, warranty, negligence, indemnification, strict liability or otherwise, shall not exceed the purchase price of the component upon which liability is based. In no event shall OMEGA be liable for consequential, incidental or special damages.**

CONDITIONS: Equipment sold by OMEGA is not intended to be used, nor shall it be used: (1) as a "Basic Component" under 10 CFR 21 (NRC), used in or with any nuclear installation or activity; or (2) in medical applications or used on humans. Should any Product(s) be used in or with any nuclear installation or activity, medical application, used on humans, or misused in any way, OMEGA assumes no responsibility as set forth in our basic WARRANTY/DISCLAIMER language, and, additionally, purchaser will indemnify OMEGA and hold OMEGA harmless from any liability or damage whatsoever arising out of the use of the Product(s) in such a manner.

## RETURN REQUESTS/INQUIRIES

Direct all warranty and repair requests/inquiries to the OMEGA Customer Service Department. BEFORE RETURNING ANY PRODUCT(S) TO OMEGA, PURCHASER MUST OBTAIN AN AUTHORIZED RETURN (AR) NUMBER FROM OMEGA'S CUSTOMER SERVICE DEPARTMENT (IN ORDER TO AVOID PROCESSING DELAYS). The assigned AR number should then be marked on the outside of the return package and on any correspondence.

The purchaser is responsible for shipping charges, freight, insurance and proper packaging to prevent breakage in transit.

FOR **WARRANTY** RETURNS, please have the following information available BEFORE contacting OMEGA:

1. Purchase Order number under which the product was PURCHASED,
2. Model and serial number of the product under warranty, and
3. Repair instructions and/or specific problems relative to the product.

FOR **NON-WARRANTY** REPAIRS, consult OMEGA for current repair charges. Have the following information available BEFORE contacting OMEGA:

1. Purchase Order number to cover the COST of the repair,
2. Model and serial number of the product, and
3. Repair instructions and/or specific problems relative to the product.

OMEGA's policy is to make running changes, not model changes, whenever an improvement is possible. This affords our customers the latest in technology and engineering.

OMEGA is a registered trademark of OMEGA ENGINEERING, INC.

© Copyright 2009 OMEGA ENGINEERING, INC. All rights reserved. This document may not be copied, photocopied, reproduced, translated, or reduced to any electronic medium or machine-readable form, in whole or in part, without the prior written consent of OMEGA ENGINEERING, INC.

# Where Do I Find Everything I Need for Process Measurement and Control?

**OMEGA...Of Course!**

***Shop online at [omega.com](http://omega.com)<sup>SM</sup>***

## **TEMPERATURE**

- Thermocouple, RTD & Thermistor Probes, Connectors, Panels & Assemblies
- Wire: Thermocouple, RTD & Thermistor
- Calibrators & Ice Point References
- Recorders, Controllers & Process Monitors
- Infrared Pyrometers

## **PRESSURE, STRAIN AND FORCE**

- Transducers & Strain Gages
- Load Cells & Pressure Gages
- Displacement Transducers
- Instrumentation & Accessories

## **FLOW/LEVEL**

- Rotameters, Gas Mass Flowmeters & Flow Computers
- Air Velocity Indicators
- Turbine/Paddlewheel Systems
- Totalizers & Batch Controllers

## **pH/CONDUCTIVITY**

- pH Electrodes, Testers & Accessories
- Benchtop/Laboratory Meters
- Controllers, Calibrators, Simulators & Pumps
- Industrial pH & Conductivity Equipment

## **DATA ACQUISITION**

- Data Acquisition & Engineering Software
- Communications-Based Acquisition Systems
- Plug-in Cards for Apple, IBM & Compatibles
- Data Logging Systems
- Recorders, Printers & Plotters

## **HEATERS**

- Heating Cable
- Cartridge & Strip Heaters
- Immersion & Band Heaters
- Flexible Heaters
- Laboratory Heaters

## **ENVIRONMENTAL**

## **MONITORING AND CONTROL**

- Metering & Control Instrumentation
- Refractometers
- Pumps & Tubing
- Air, Soil & Water Monitors
- Industrial Water & Wastewater Treatment
- pH, Conductivity & Dissolved Oxygen Instruments