

# Totalflow host software System software products

## MAK AUTOMATIZACIÓN

Para adquirir este producto en México favor de contactarnos al correo de:

[ventas@atautomation.com.mx](mailto:ventas@atautomation.com.mx)

+52 (55) 6584 – 9782

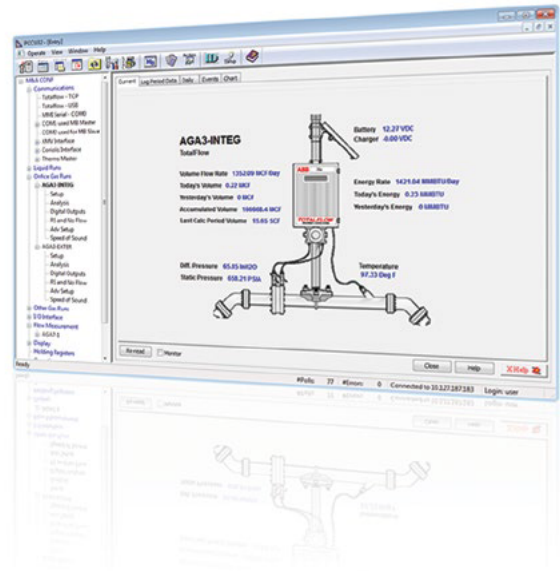
+52 (55) 4334 – 9242

## Introduction

No matter the size of a gas production, gathering or pipeline operation, there is ABB Totalflow software designed to support ongoing configuration, collection, operations, data distribution and asset management. This is done more easily and efficiently and more cost-effectively than most would think possible. ABB Totalflow Software systems provide Total Control solutions.

## Making sense of software

Why do some hardware providers require the purchase of a third-party software system to operate their equipment? That's a bit like having to buy a car body from one dealer and the engine from another. Everything about ABB Totalflow software systems is designed to make sense—logistical, functional and economic sense—for every production, gathering or pipeline operation. These remarkably easy-to-use software systems provide real-time measurement and control support right out of the box. Users can quickly begin



accessing and controlling facilities from wherever they may be. These are open systems, compatible not only with ABB hardware and software but also with a wide range of non-ABB systems. Compatibility is a commitment — compatible with all ABB hardware — whether it's the latest and greatest ABB product or the first Totalflow model ever made. The capabilities of ABB Totalflow software are continually updated, never to render classic Totalflow equipment obsolete. A very important point too, since ABB Totalflow hardware is built to last a long, long time. ABB users deserve software that keeps this hardware viable and productive. Users also deserve accessible and effective support, which comes standard with every ABB Totalflow system. Even with software systems designed for easy set up and use, there are still times when knowledgeable assistance can make a difference. The ABB Totalflow support staff—including project engineers with 20+ years' experience—is always on call to assist with any software or hardware issues. Take a look at ABB Totalflow software systems to see which ones make the most sense for any production, gathering or pipeline operation.

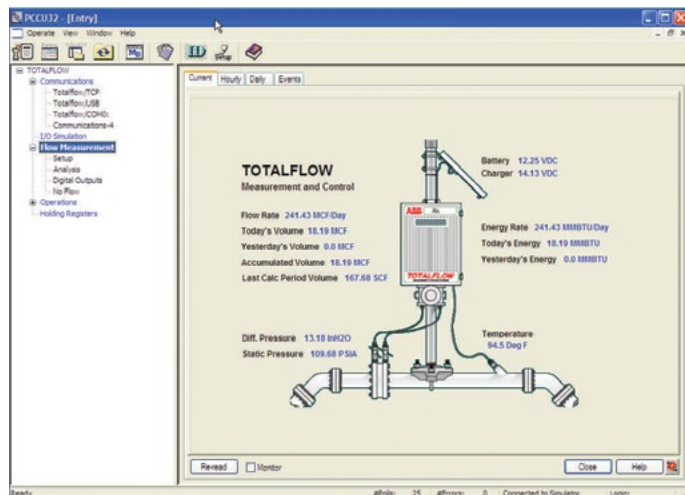
# Totalflow host software

## System software products

### PCCU configuration and collection

Setup Totalflow devices and collect data.

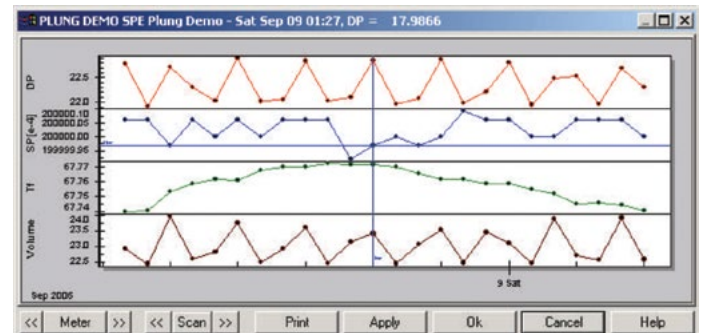
- Windows application
- Local interface to all ABB Totalflow flow computers, RTU's, and chromatographs
- Calibrate and configure all IO
- Local data collection
- Local data graphing and reporting
- Configure remote communication ports
- Configure trend files in addition to standard EFM historical files
- Diagnostics/troubleshooting
- Monitor real time status
- Program analog and digital operations
- Program display and keypad functionality
- Configure and troubleshoot NGC
- View chromatograms and configure cycle times
- Remote configuration capabilities



### WinCCU – EFM host

Complete gas volume/energy data management

- API 21.1 compliant audit trail
- 13 standard reports (e.g. hourly/daily volume, missing data, field balance)
- User configurable variance reports



- Multiple export formats (e.g. CSV, ASCII, PGAS, CFX5, 7)
- Full featured gas volume editor
- Microsoft Access or SQL server databases
- LAN/WAN multi-user capability
- Configurable status polls (templates) on demand or scheduled

### Remote communications

- Multiple communication port controller
- Radio, telco, CDPD, satellite, and cellular
- Automatic retry groups
- Exception reporting support
- TCP/IP socket interface
- Remote status monitoring (template)

### Task scheduler

- Status polls, flow data collects, trend collects, alarms
- Batch configuration of field devices
- Reporting, emailing

## WebCCU

- WinCCU add-on works over internet or intranet
- Browser-based data presentation
- Microsoft .NET technology
- Post near real-time data to internet site
- Standard WinCCU reports
- Flow data, alarms, events, characteristics, trends
- Demand polling

## TF.net internet/intranet database navigation and viewing

- Browser presentation capability for virtually any ODBC database
- Microsoft .NET technology
- Access near real-time data from web site
- Graphical presentation of operational data
- Standard WinCCU reports (flow data, alarms, events, characteristics, trends)
- Flexible “active reports”
- Demand polling and configuration of field devices via Totalflow TDS/OPC software

The image shows two overlapping browser windows. The top window, titled 'Main - Microsoft Internet Explorer', displays the 'ABB Totalflow Web' interface. The address bar shows 'http://localhost/tnet/main.aspx'. The page features a 'Logout' button and a 'TDS Status' section with a table:

Item	Value	Quality	Timestamp
HEARTBEAT	1391702166	good	2/7/2014 8:10:00 AM

The left sidebar contains a tree view with nodes: Totallflow, TDS Status, TDS Comm, Alarm Log, Acme\_Oil, AdminTFNet, DRL1NGC8206, DRLG4XRC : Cubicle, TUBE1 :Cubicle, In-House, AGA3-1, and AGA7-1: Dave's Cubicle.

The bottom window, titled 'Reports - Microsoft Internet Explorer', displays the 'TF.NET Administrator Console, Version 3.0.14'. The address bar shows 'http://localhost/tnetadmin/Reports.aspx'. The current company is set to 'Acme Oil Co.'. A menu bar includes: Companies, Roles, Users, Databases, List Views, Tag Views, Tree Node Types, Styles, Admins, Permissions, Reports. A 'Reports' dialog box is open, listing reports defined for the current company:

- Current Characteristic Report (TFAR 300)
- Historical Characteristic Report (TFAR 301)
- Events Report (TFAR 310)
- Meter Log Period Report (TFAR 320)
- Daily Volume Report (TFAR 321)
- Total Volume Report (TFAR 330)
- Field Balance Report (TFAR 340)
- Meter File Change Log Report (TFAR 341)
- Alarm Summary Report (TFAR 342)
- Missing Data Report (TFAR 350)
- File Summary Report (TFAR 370)
- Calibration Report (TFAR 380)

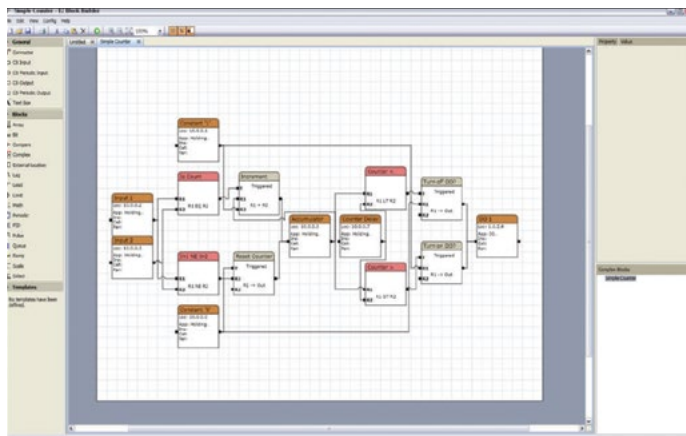
Buttons at the bottom of the dialog are: Add..., Edit..., Delete, and Parameters...

# Totalflow host software

## System software products

### EZ Blocks

- Provides intuitive, graphical way to create custom operations
- Works with G4 devices
- Similar to function block language in IEC-61131
- Simple yet powerful library of blocks
- Offline development possible with simulator
- Built-in debugger



### VAS voice alarm messaging

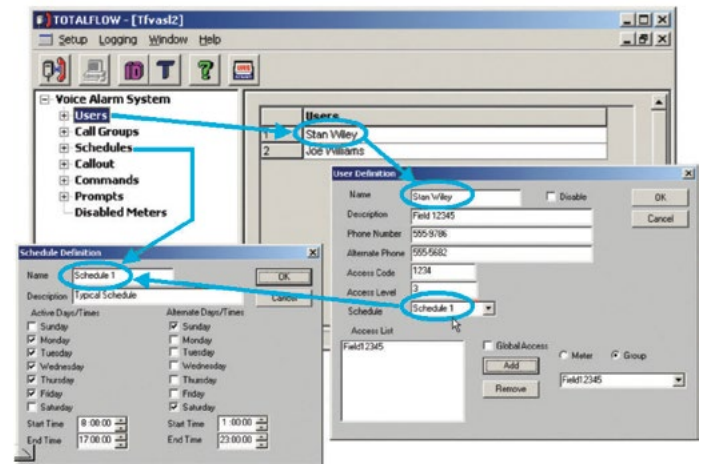
- Hardware + software solution
- Windows application
- Dialogic speechboard management
- Call in/call out services

#### Supports up to 4 phone lines

- (2) call in, (2) call out

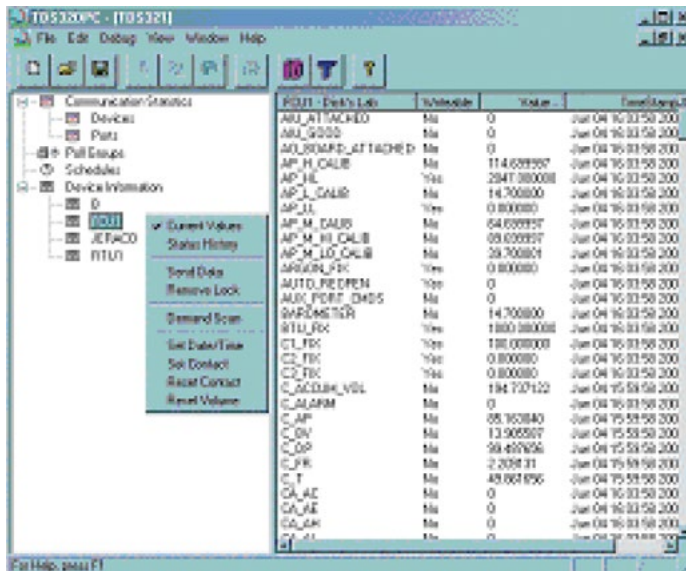
#### Comprehensive callout on alarm list

- Multiple regions
- Multiple receivers of call with priority
- Confirmation of authorized receiver of call
- Log records of callouts
- Call received confirmation
- Trigger callout from polled or exception alarms



## TDS32 OPC/DDE driver

- Totalflow protocol link to OPC-Read/DDE aware software systems
- Coexist with WinCCU or as stand alone link to third party systems
- Retrieve exception reporting status from Totalflow devices
- Browse functionality
- Persistent data retention
- Supports 50,000+ tags



## Plunger analysis software

Windows application for optimizing plunger control parameters in a flow computer or RTU

- Increase gas production volumes
- Reduce extended shut-ins due to liquid loading
- Lower operating costs
- Characterize well conditions to optimize liquid production

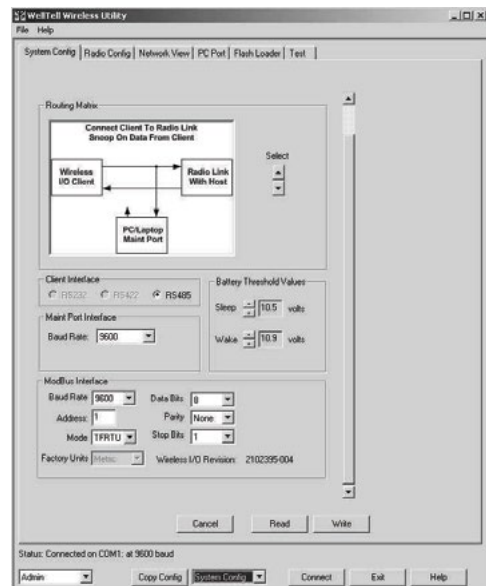


# Totalflow host software

## System software products

### WellTell wireless utility

- Configure radio settings to enhance wireless communications and troubleshoot field installations
- Set battery wake and sleep thresholds to protect from permanent damage
- Change channel and frequency settings to minimize interference
- Adjust baud rates for adding multiple IO clients to a single host



### WellTell local calibration software

- Calibrate at the IO device location to eliminate the need for a second person at the RTU or flow computer
- Calibrations can be sent wirelessly to the RTU
- 2,3 and 5 point calibrations of analog inputs
- Calibration support for analog outputs and temperature RTDs

### MasterLink

- Windows application for LevelMaster tank level sensor setup
- Configure communications
- Establish unique device ID
- Calibrate surface and interface levels
- View level and temperature

## System requirements

	Pentium IV, 2 GHz	Memory	Hard Drive Memory (data storage excluded)	CD ROM drive	SVGA or higher resolution	9 pin serial port or USB	Windows 7 <sup>5</sup> X32	Windows 7 <sup>5</sup> X64	Windows 8 <sup>5</sup> X32 (in test)	Windows 8 <sup>5</sup> X64 (in test)	Windows XP	Windows Vista	Windows Server 2000	Windows Server 2003 (R1, R2, X32, X64)	Windows Server 2008 <sup>5</sup> (R1, R2, X32, X64)	Windows Server 2012 <sup>5</sup> (X64) (in test)	Microsoft SQL Server 2000	Microsoft SQL Server 2005 or 2008 (R1, R2, X32, X64)	Version Support
<b>Client software</b>																			
PCCU	✓	3 GB	1 GB	✓	✓	✓ <sup>1</sup>	✓	✓	✓	✓	✓	✓ <sup>3</sup>							7.18 and higher
Plunger Analysis	✓	3 GB	1 GB	✓	✓	✓ <sup>1</sup>	✓	✓	✓	✓	✓								2.0 and higher
EZ Blocks	✓	3 GB	1 GB	✓	✓	✓ <sup>1</sup>	✓	✓	✓	✓	✓								1.0 to 2.0
EZ Blocks	✓	3 GB	1 GB	✓	✓	✓ <sup>1</sup>	✓	✓	✓	✓	✓								3.0 and higher
WellTell <sup>4</sup>	✓	3 GB	10 MB	✓	✓		✓	✓	✓	✓	✓								1.0 and higher
MasterLink	✓	3 GB	1 MB	✓	✓		✓	✓	✓	✓	✓								1.0 and higher
<b>Host software</b>																			
WinCCU	✓	3 GB	1 GB	✓	✓	✓ <sup>1</sup>					✓		✓ <sup>2</sup>	✓			✓	✓	6.08.0 to 6.11.4
WinCCU	✓	3 GB	1 GB	✓	✓		✓	✓	✓	✓				✓	✓	✓		✓	6.20.0 and higher
TF.net	✓	3 GB	1 GB	✓	✓								✓	✓	✓		✓	✓	3.0 and higher
WebCCU	✓	3 GB	1 GB	✓	✓								✓	✓	✓		✓	✓	3.0 and higher
VAS <sup>6</sup>	✓	3 GB	1 GB	✓	✓		✓	✓	✓	✓			✓	✓	✓	✓	✓	✓	5.22 and higher
TDS	✓	3 GB	1 GB	✓	✓		✓	✓	✓	✓			✓	✓			✓	✓	5.28.0 to 6.0.1
TDS	✓	3 GB	1 GB	✓	✓		✓	✓	✓	✓				✓	✓	✓		✓	6.21.0 and higher

1. Edgeport1 recommended for USB to Serial conversion
2. Requires manual installation
3. NGC not supported
4. Utility and local calibration software

5. Security settings must be correct for software to work correctly on Windows 7, Windows 8, Windows Server 2008, and Windows Server 2012. DDE not available
6. VAS 5.22 requires Dialogic drivers Build 258 or higher for X64 computers. See <http://support.microsoft.com/kb/917607> for help.

# Contact us

## **ABB Inc.**

### **Upstream Oil & Gas Process Automation**

Toll-free: + 1 800 442 3097

Quotes: [totalflow.inquiry@us.abb.com](mailto:totalflow.inquiry@us.abb.com)

Orders: [totalflow.order@us.abb.com](mailto:totalflow.order@us.abb.com)

Training: [totalflow.training@us.abb.com](mailto:totalflow.training@us.abb.com)

Support: [totalflowsupport@us.abb.com](mailto:totalflowsupport@us.abb.com)

### **Upstream Oil & Gas Main Office**

7051 Industrial Boulevard

Bartlesville, OK 74006

Ph: +1 918 338 4888

### **Upstream Oil & Gas California Office**

4300 Stine Road, Suite 405-407

Bakersfield, CA 93313

Ph: +1 661 833 2030

### **Upstream Oil & Gas Kansas Office**

2705 Centennial Boulevard

Liberal, KS 67901

Ph: +1 620 626 4350

### **Upstream Oil & Gas Texas Offices**

3700 West Sam Houston

Parkway South, Suite 600

Houston, TX 77042

Ph: +1 713 587 8000

3900 South County Road 1290

Odessa, TX 79765

Ph: +1 432 563 5144

150 Eagle Ford Road

Pleasanton, TX 78064

Ph: +1 830 569 8062

[www.abb.com/upstream](http://www.abb.com/upstream)

## Note

We reserve the right to make technical changes or modify the contents of this document without prior notice. With regard to purchase orders, the agreed particulars shall prevail. ABB does not accept any responsibility whatsoever for potential errors or possible lack of information in this document.

We reserve all rights in this document and in the subject matter and illustrations contained therein. Any reproduction, disclosure to third parties or utilization of its contents – in whole or in parts – is forbidden without prior written consent of ABB.

Copyright © 2016 ABB Inc.  
All rights reserved



Product  
webpage