



OpenAir

Database Guide

Copyright © 2013, 2022, Oracle and/or its affiliates.

This software and related documentation are provided under a license agreement containing restrictions on use and disclosure and are protected by intellectual property laws. Except as expressly permitted in your license agreement or allowed by law, you may not use, copy, reproduce, translate, broadcast, modify, license, transmit, distribute, exhibit, perform, publish, or display any part, in any form, or by any means. Reverse engineering, disassembly, or decompilation of this software, unless required by law for interoperability, is prohibited.

The information contained herein is subject to change without notice and is not warranted to be error-free. If you find any errors, please report them to us in writing.

If this is software or related documentation that is delivered to the U.S. Government or anyone licensing it on behalf of the U.S. Government, then the following notice is applicable:

U.S. GOVERNMENT END USERS: Oracle programs (including any operating system, integrated software, any programs embedded, installed or activated on delivered hardware, and modifications of such programs) and Oracle computer documentation or other Oracle data delivered to or accessed by U.S. Government end users are "commercial computer software" or "commercial computer software documentation" pursuant to the applicable Federal Acquisition Regulation and agency-specific supplemental regulations. As such, the use, reproduction, duplication, release, display, disclosure, modification, preparation of derivative works, and/or adaptation of i) Oracle programs (including any operating system, integrated software, any programs embedded, installed or activated on delivered hardware, and modifications of such programs), ii) Oracle computer documentation and/or iii) other Oracle data, is subject to the rights and limitations specified in the license contained in the applicable contract. The terms governing the U.S. Government's use of Oracle cloud services are defined by the applicable contract for such services. No other rights are granted to the U.S. Government.

This software or hardware is developed for general use in a variety of information management applications. It is not developed or intended for use in any inherently dangerous applications, including applications that may create a risk of personal injury. If you use this software or hardware in dangerous applications, then you shall be responsible to take all appropriate fail-safe, backup, redundancy, and other measures to ensure its safe use. Oracle Corporation and its affiliates disclaim any liability for any damages caused by use of this software or hardware in dangerous applications.

Oracle and Java are registered trademarks of Oracle and/or its affiliates. Other names may be trademarks of their respective owners.

Intel and Intel Inside are trademarks or registered trademarks of Intel Corporation. All SPARC trademarks are used under license and are trademarks or registered trademarks of SPARC International, Inc. AMD, Epyc, and the AMD logo are trademarks or registered trademarks of Advanced Micro Devices. UNIX is a registered trademark of The Open Group.

This software or hardware and documentation may provide access to or information about content, products, and services from third parties. Oracle Corporation and its affiliates are not responsible for and expressly disclaim all warranties of any kind with respect to third-party content, products, and services unless otherwise set forth in an applicable agreement between you and Oracle. Oracle Corporation and its affiliates will not be responsible for any loss, costs, or damages incurred due to your access to or use of third-party content, products, or services, except as set forth in an applicable agreement between you and Oracle.

If this document is in public or private pre-General Availability status:

This documentation is in pre-General Availability status and is intended for demonstration and preliminary use only. It may not be specific to the hardware on which you are using the software. Oracle Corporation and its affiliates are not responsible for and expressly disclaim all warranties of any kind with respect to this documentation and will not be responsible for any loss, costs, or damages incurred due to the use of this documentation.

If this document is in private pre-General Availability status:

The information contained in this document is for informational sharing purposes only and should be considered in your capacity as a customer advisory board member or pursuant to your pre-General Availability trial agreement only. It is not a commitment to deliver any material, code, or functionality, and should not be relied upon in making purchasing decisions. The development, release, timing, and pricing of any features or functionality described in this document may change and remains at the sole discretion of Oracle.

This document in any form, software or printed matter, contains proprietary information that is the exclusive property of Oracle. Your access to and use of this confidential material is subject to the terms and conditions of your Oracle Master Agreement, Oracle License and Services Agreement, Oracle PartnerNetwork Agreement, Oracle distribution agreement, or other license agreement which has been executed by you and Oracle and with which you agree to comply. This document and information contained herein may not be disclosed, copied, reproduced, or distributed to anyone outside Oracle without prior written consent of Oracle. This document is not part of your license agreement nor can it be incorporated into any contractual agreement with Oracle or its subsidiaries or affiliates.

Documentation Accessibility

For information about Oracle's commitment to accessibility, visit the Oracle Accessibility Program website at <http://www.oracle.com/pls/topic/lookup?ctx=acc&id=docacc>

Access to Oracle Support

Oracle customers that have purchased support have access to electronic support through My Oracle Support. For information, visit <http://www.oracle.com/pls/topic/lookup?ctx=acc&id=info> or visit <http://www.oracle.com/pls/topic/lookup?ctx=acc&id=trs> if you are hearing impaired.

Sample Code

Oracle may provide sample code in SuiteAnswers, the Help Center, User Guides, or elsewhere through help links. All such sample code is provided "as is" and "as available", for use only with an authorized NetSuite Service account, and is made available as a SuiteCloud Technology subject to the SuiteCloud Terms of Service at www.netsuite.com/tos, where the term "Service" shall mean the OpenAir Service.

Oracle may modify or remove sample code at any time without notice.

No Excessive Use of the Service

As the Service is a multi-tenant service offering on shared databases, Customer may not use the Service in excess of limits or thresholds that Oracle considers commercially reasonable for the Service. If Oracle reasonably concludes that a Customer's use is excessive and/or will cause immediate or ongoing performance issues for one or more of Oracle's other customers, Oracle may slow down or throttle Customer's excess use until such time that Customer's use stays within reasonable limits. If Customer's particular usage pattern requires a higher limit or threshold, then the Customer should procure a subscription to the Service that accommodates a higher limit and/or threshold that more effectively aligns with the Customer's actual usage pattern.

Table of Contents

Introduction	1
Diagrams	3
Accounting Period	3
Agreement	4
Approval Process	5
Attachment	6
Authorization	7
Billing	8
Booking	9
Budget	10
Category	11
Cost	12
Customer	13
Custom Field	15
Deal	16
Envelope	17
Estimate	18
Expense Policy	19
Filter	20
Invoice	21
Issue	22
Item	23
Job Rate	24
Leave Accrual	25
Miscellaneous	26
NetSuite Connector	27
News Feed	28
Payment	29
Product	30
Project	31
Project Group	32
Project Pricing	33
Project Task	34
Proposal	36
Purchase Item	37
Purchase Order	38
Reporting	40
Request Item	41
Resource Profile	42
Resource Request	43
Revenue Container	44
Revenue Recognition	45
Role	46
Schedule	47
Script	48
Slip	49
Switch	50
Tag	51
Task	52
Tax	53
Ticket	54
Time	55
User	57

Workhour	58
Workspace	59
Index	61

Introduction

Overview

This guide provides a visual representation of the OpenAir database as viewed through the SOAP/XML API.

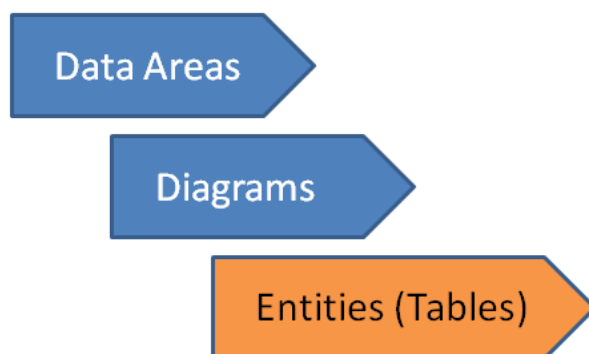
Important: This guide does not describe the physical database, and does not describe the features provided to protect the security, privacy, and integrity of our customers' data.

The diagrams in this guide provide an overview and you will need to refer to the OpenAir Data Dictionary for the details. Links to the data dictionary are provided as appropriate throughout the guide for this purpose.

Note: To view the OpenAir Data Dictionary, use the following URL: https://<account-domain>/database/single_user.html.

- <account-domain> is the account specific domain for your account.
- To view the details of a specific table, append a hash symbol # followed by the table name to the end of the data dictionary URL. For example, use https://<account-domain>/database/single_user.html#project to view the details of the Project table.
- You can access the data dictionary from the OpenAir Help Center using the link in the navigation bar if you have the View Help Center role permission.

Note: Diagrams do not show all the fields for large entities (tables) nor do they show all the relationships, refer to the OpenAir Data Dictionary for the details.



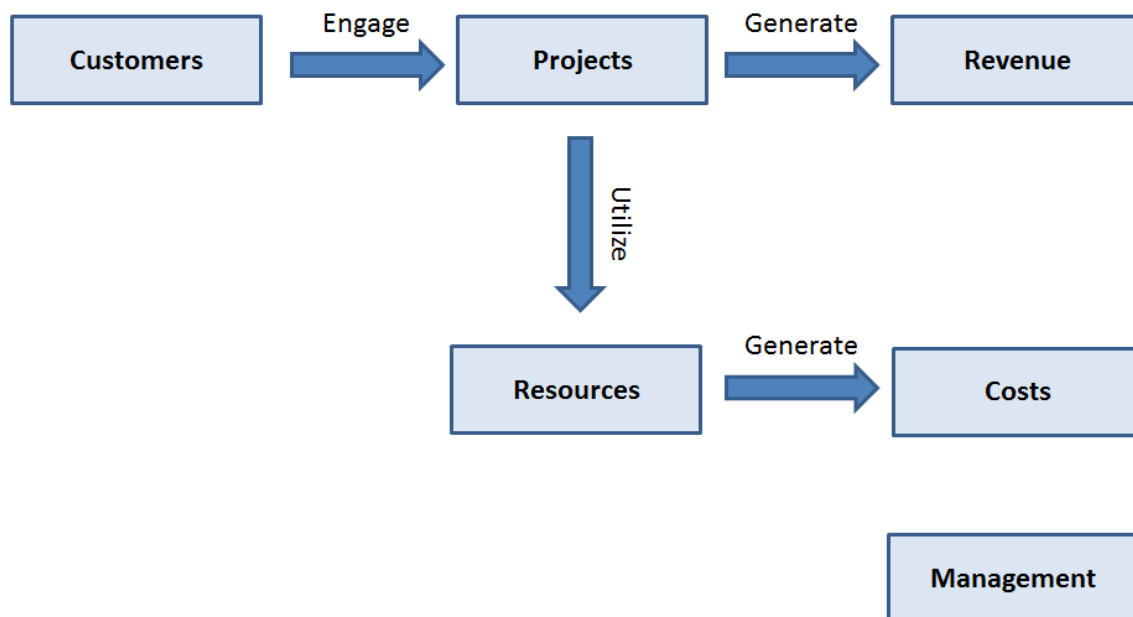
The guide is organized into three levels:

1. **Data Areas** are used to categorize the diagrams by business area. This is intended to give a high-level overview of the database.
2. **Diagrams** are **Entity Relationship Diagrams (ERD)** using **Crow's foot notation**. A table is provided at the bottom of each diagram with links to the OpenAir Data Dictionary and links to related diagrams.

Note: Links to the data dictionary provided in this guide use the generic OpenAir domain www.openair.com. In some instances, you may need to replace the generic domain with your account specific domain in the link URLs to access the OpenAir data dictionary. E.g. to view the data dictionary description of the Project table on Production, use:
https://<companyID>.app.openair.com/database/single_user.html#project

- The final chapter contains an [Index](#) mapping each entity (table) to its diagram and data dictionary entry.

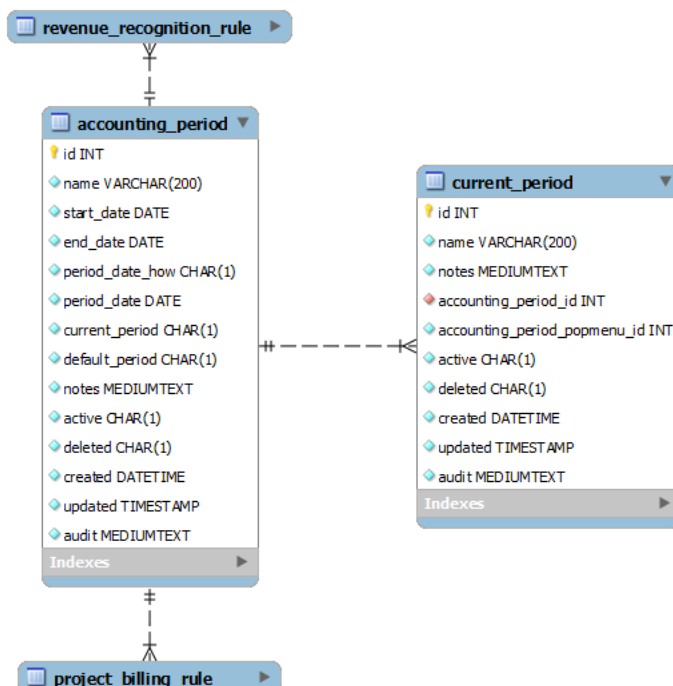
Data Areas



Customers Agreement, Category, Customer, Deal, Proposal	Projects Issue, Project, Project Group, Project Pricing, Project Task	Revenue Revenue Container, Revenue Recognition
Resources Attachment, Booking, Leave Accrual, Resource Profile, Resource Request, Schedule User	Costs Accounting Period, Billing, Budget, Cost, Envelope, Estimate, Expense Policy, Invoice, Item, Job Rate, Payment, Purchase Item, Purchase Order, Request Item, Slip, Task, Time, Workhour	Management Approval Process, Authorization, Custom Field, Filter, Miscellaneous, Product, Role Reporting, Script, Switch, Tag, Tax, Workspace

Diagrams

Accounting Period

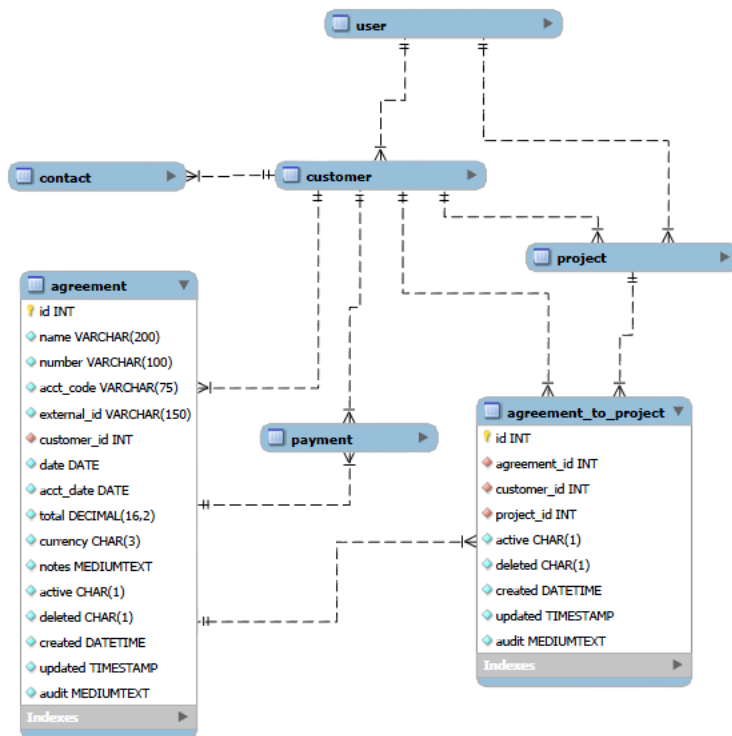


Note: Links to the data dictionary provided in this guide use the generic OpenAir domain www.openair.com. In some instances, you may need to replace the generic domain with your account specific domain in the link URLs to access the OpenAir data dictionary. E.g. to view the data dictionary description of the Project table on Production, use:

https://<companyID>.app.openair.com/database/single_user.html#project

Data Dictionary	Related Diagrams
accounting_period, current_period	Billing, Revenue Recognition

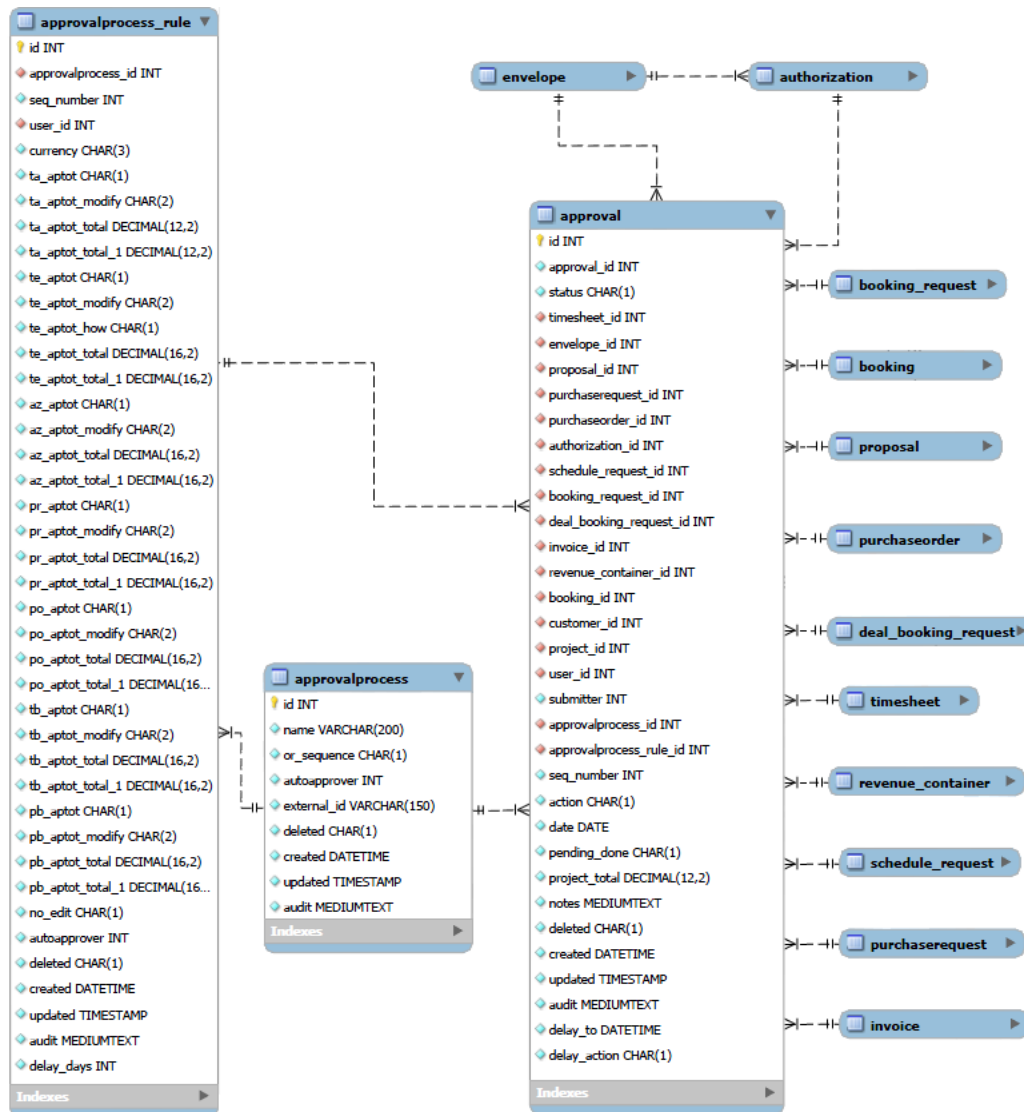
Agreement



Note: Links to the data dictionary provided in this guide use the generic OpenAir domain www.openair.com. In some instances, you may need to replace the generic domain with your account specific domain in the link URLs to access the OpenAir data dictionary. E.g. to view the data dictionary description of the Project table on Production, use:
https://<companyID>.app.openair.com/database/single_user.html#project

Data Dictionary	Related Diagrams
agreement , agreement_to_project	Billing , Project , Revenue Container

Approval Process

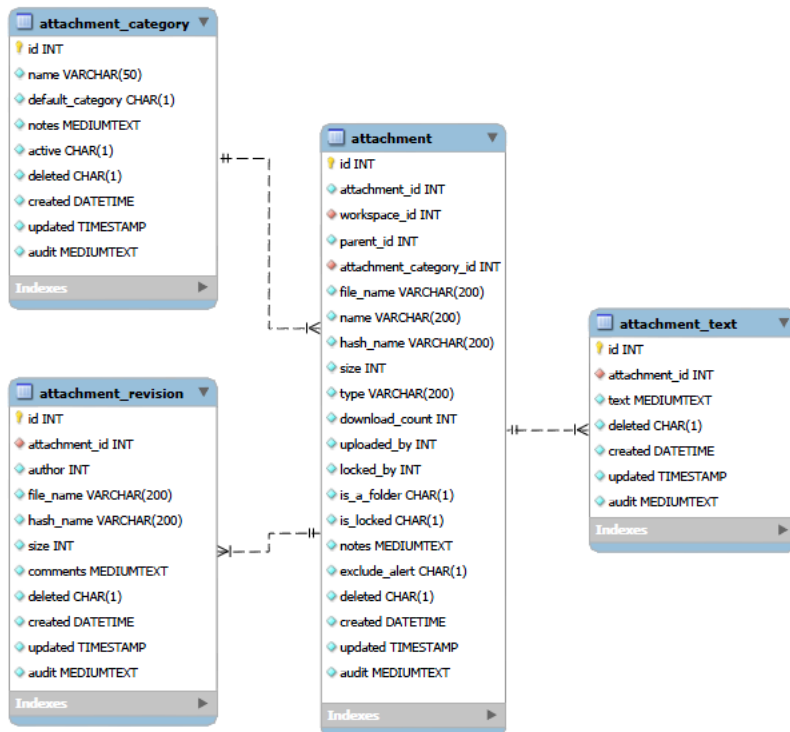


Note: Links to the data dictionary provided in this guide use the generic OpenAir domain www.openair.com. In some instances, you may need to replace the generic domain with your account specific domain in the link URLs to access the OpenAir data dictionary. E.g. to view the data dictionary description of the Project table on Production, use:

https://<companyID>.app.openair.com/database/single_user.html#project

Data Dictionary	Related Diagrams
issue, issue_category, issue_severity, issue_source, issue_stage, issue_status	Authorization, Booking, Deal, Invoice, Proposal, Purchase Order, Revenue Container, Schedule, Time

Attachment

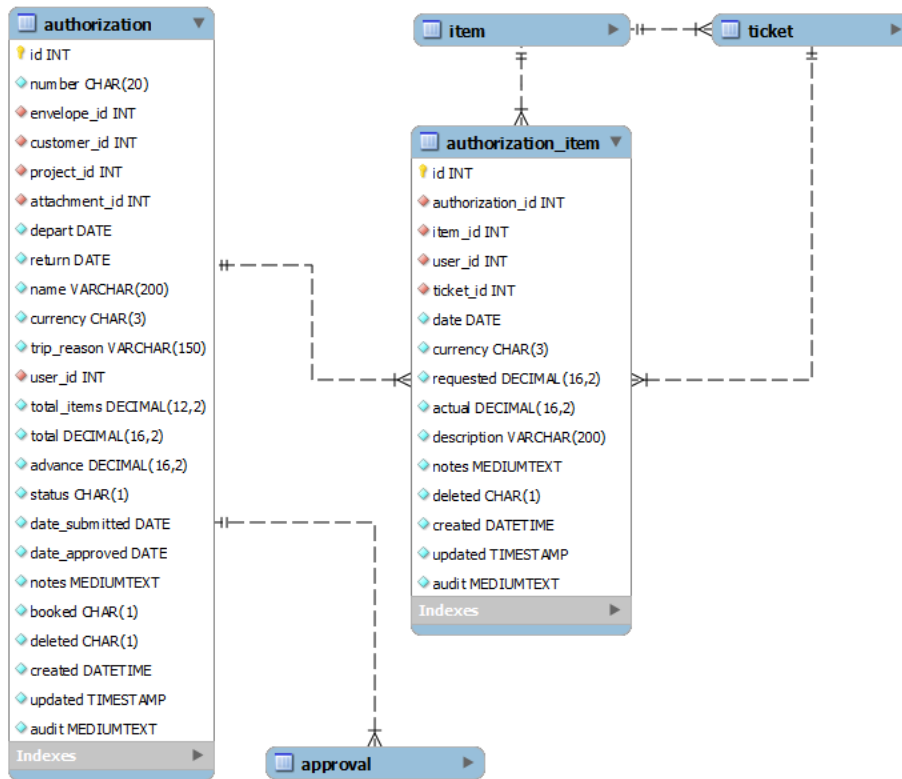


Note: Links to the data dictionary provided in this guide use the generic OpenAir domain www.openair.com. In some instances, you may need to replace the generic domain with your account specific domain in the link URLs to access the OpenAir data dictionary. E.g. to view the data dictionary description of the Project table on Production, use:

https://<companyID>.app.openair.com/database/single_user.html#project

Data Dictionary	Related Diagrams
attachment , attachment_category , attachment_revision , attachment_text	Issue , Script , Time , Workspace

Authorization

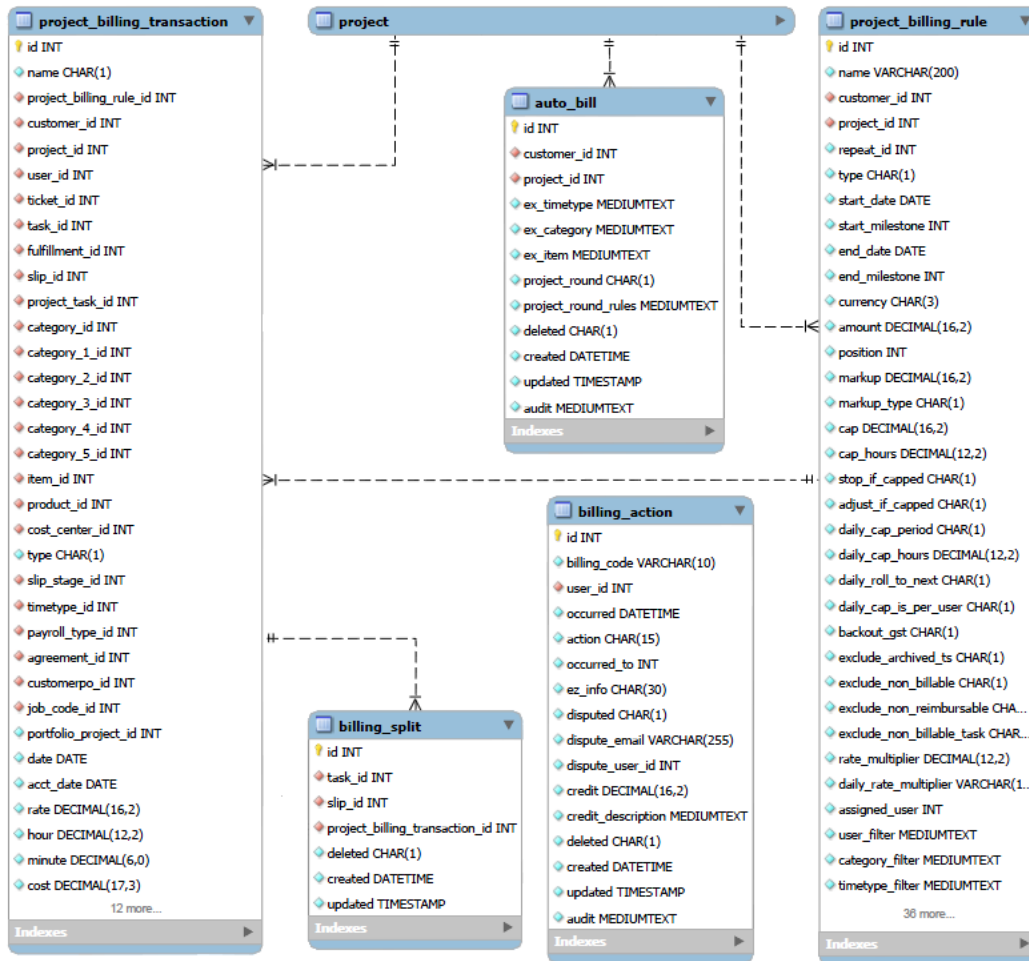


Note: Links to the data dictionary provided in this guide use the generic OpenAir domain www.openair.com. In some instances, you may need to replace the generic domain with your account specific domain in the link URLs to access the OpenAir data dictionary. E.g. to view the data dictionary description of the Project table on Production, use:

https://<companyID>.app.openair.com/database/single_user.html#project

Data Dictionary	Related Diagrams
authorization, authorization_item	Approval Process

Billing

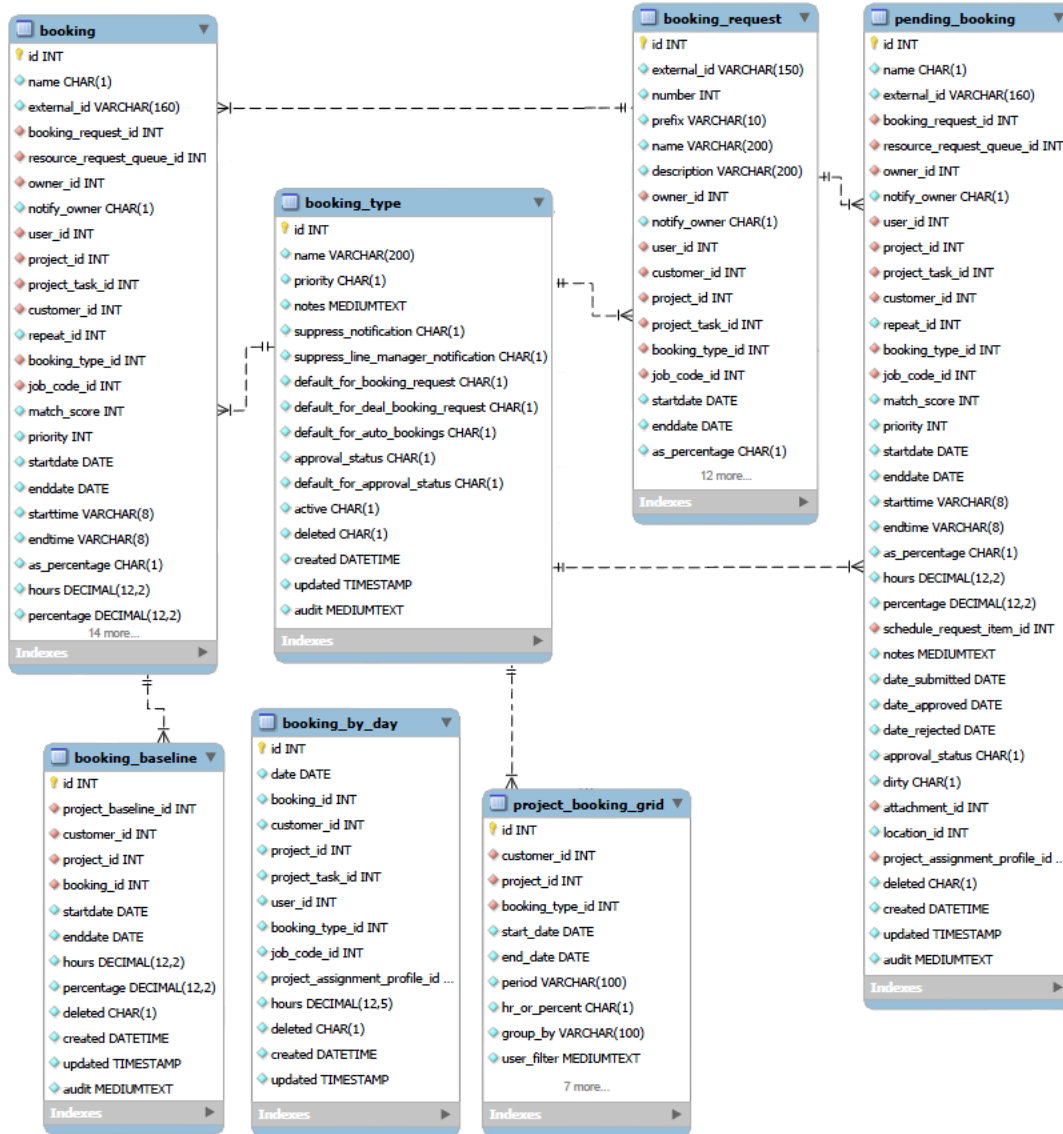


Note: Links to the data dictionary provided in this guide use the generic OpenAir domain www.openair.com. In some instances, you may need to replace the generic domain with your account specific domain in the link URLs to access the OpenAir data dictionary. E.g. to view the data dictionary description of the Project table on Production, use:

https://<companyID>.app.openair.com/database/single_user.html#project

Data Dictionary	Related Diagrams
auto_bill , billing_action , billing_split , project_billing_rule , project_billing_transaction	Accounting Period

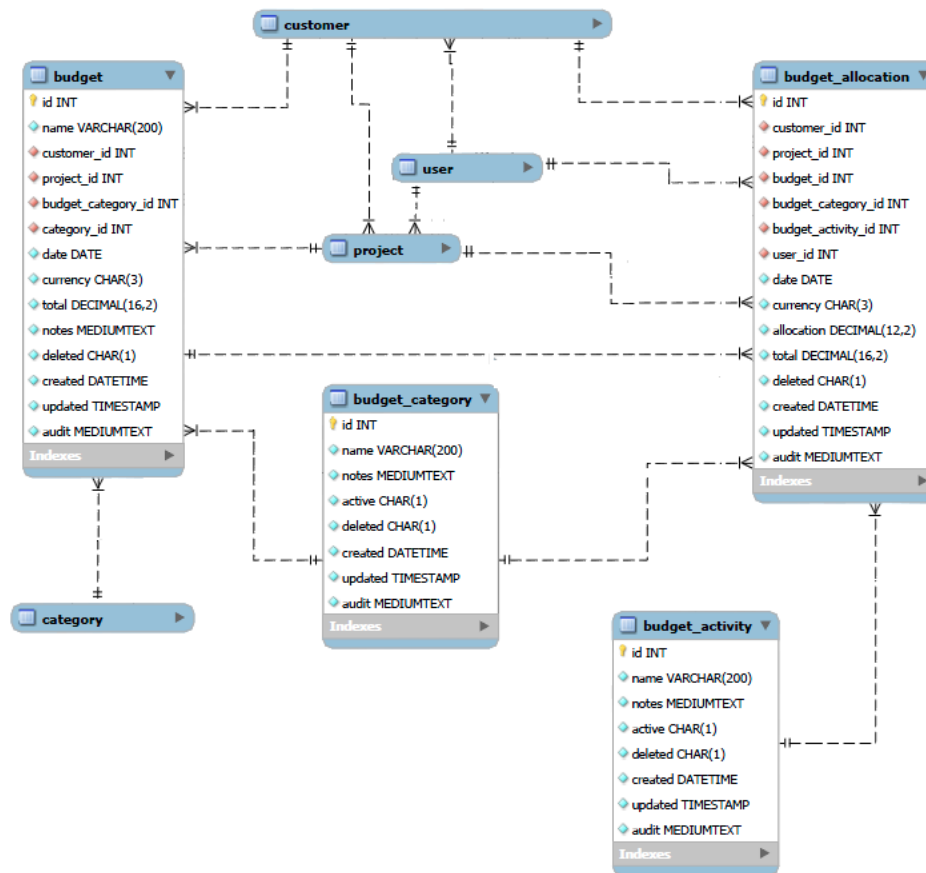
Booking



Note: Links to the data dictionary provided in this guide use the generic OpenAir domain www.openair.com. In some instances, you may need to replace the generic domain with your account specific domain in the link URLs to access the OpenAir data dictionary. E.g. to view the data dictionary description of the Project table on Production, use:
https://<companyID>.app.openair.com/database/single_user.html#project

Data Dictionary	Related Diagrams
booking , booking_baseline , booking_by_day , booking_request , booking_type , pending_booking , project_booking_grid	Approval Process , Deal , Resource Profile , Resource Request

Budget

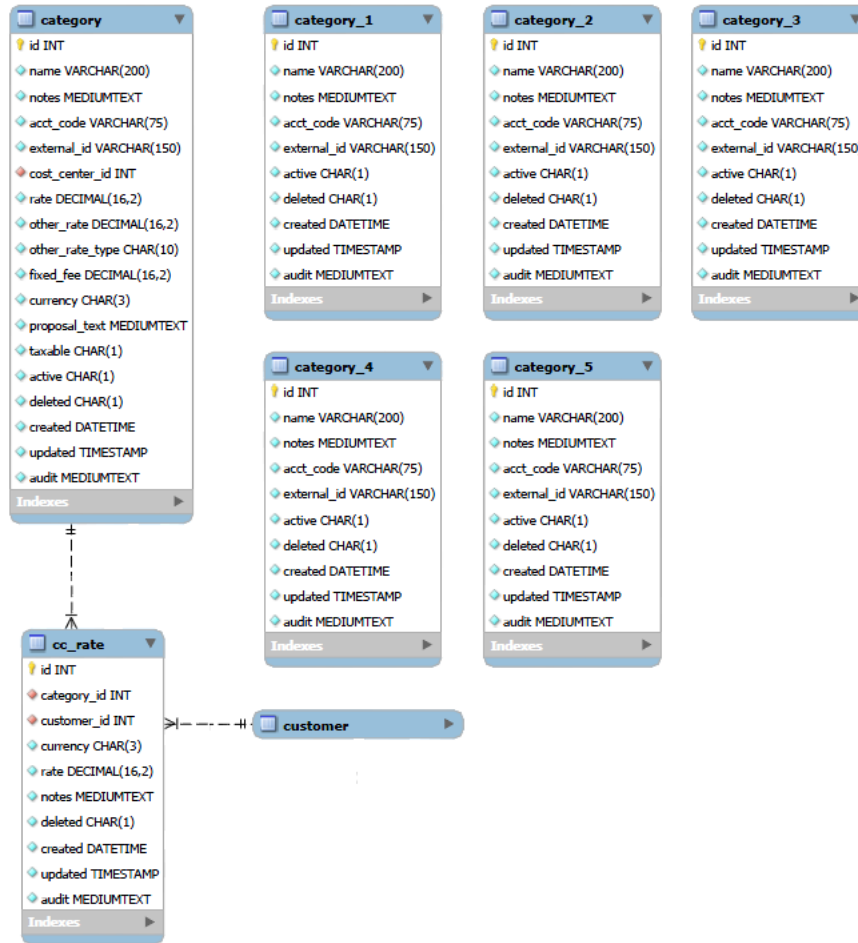


Note: Links to the data dictionary provided in this guide use the generic OpenAir domain www.openair.com. In some instances, you may need to replace the generic domain with your account specific domain in the link URLs to access the OpenAir data dictionary. E.g. to view the data dictionary description of the Project table on Production, use:

https://<companyID>.app.openair.com/database/single_user.html#project

Data Dictionary	Related Diagrams
budget , budget_activity , budget_allocation , budget_category	Customer , Project , User

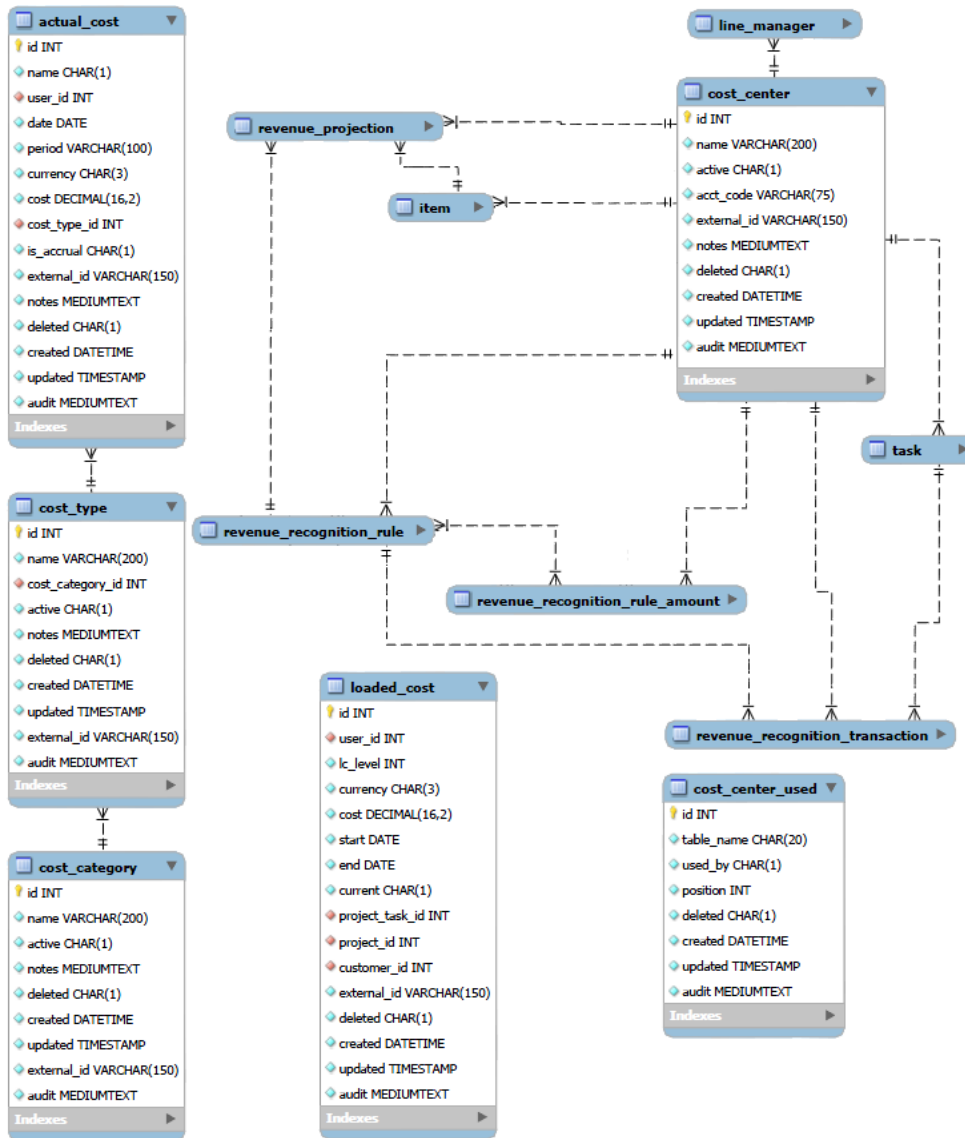
Category



Note: Links to the data dictionary provided in this guide use the generic OpenAir domain www.openair.com. In some instances, you may need to replace the generic domain with your account specific domain in the link URLs to access the OpenAir data dictionary. E.g. to view the data dictionary description of the Project table on Production, use:
https://<companyID>.app.openair.com/database/single_user.html#project

Data Dictionary	Related Diagrams
category, category_1, category_2, category_3, category_4, category_5, cc_rate	Customer

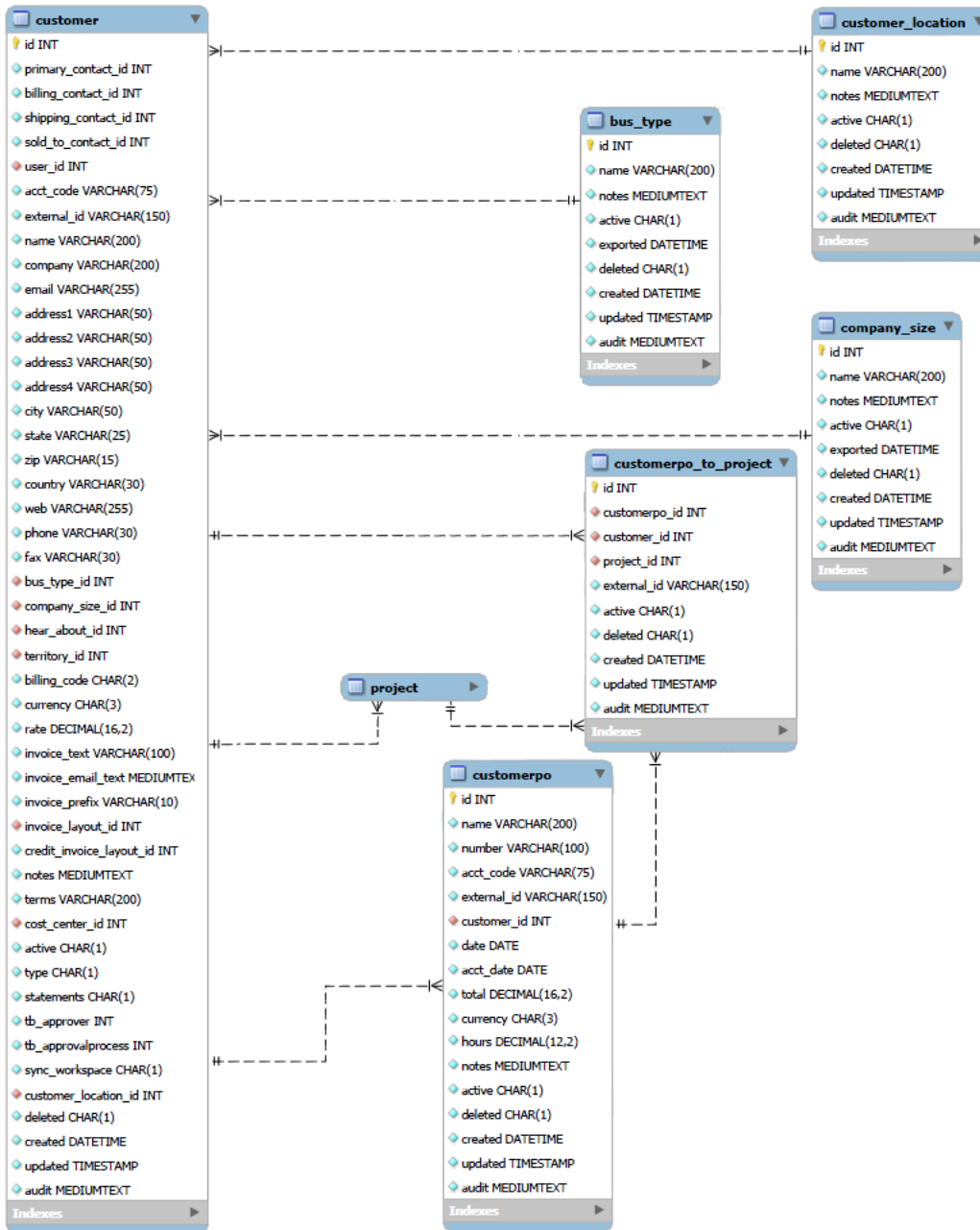
Cost



Note: Links to the data dictionary provided in this guide use the generic OpenAir domain www.openair.com. In some instances, you may need to replace the generic domain with your account specific domain in the link URLs to access the OpenAir data dictionary. E.g. to view the data dictionary description of the Project table on Production, use:
https://<companyID>.app.openair.com/database/single_user.html#project

Data Dictionary	Related Diagrams
actual_cost , cost_category , cost_center , cost_center_used , cost_type , loaded_cost	Estimate , Item , Revenue Recognition

Customer

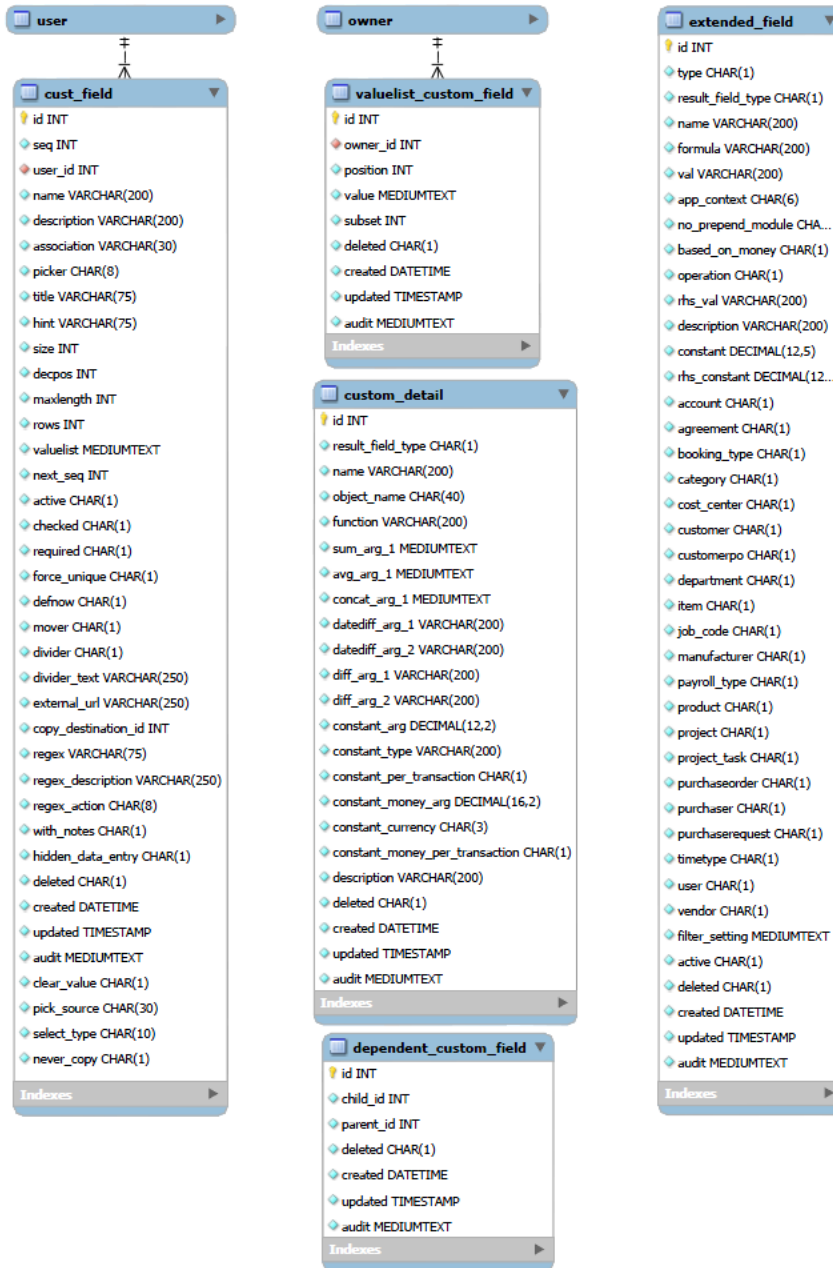


Note: Links to the data dictionary provided in this guide use the generic OpenAir domain `www.openair.com`. In some instances, you may need to replace the generic domain with your account specific domain in the link URLs to access the OpenAir data dictionary. E.g. to view the data dictionary description of the Project table on Production, use:

`https://<companyID>.app.openair.com/database/single_user.html#project`

Data Dictionary	Related Diagrams
bus_type , company_size , customer , customer_location , customerpo , customerpo_to_project	Agreement , Budget , Category , Expense Policy , Invoice , Issue , Item , Payment , Project Pricing , Project Task , Reporting , Resource Request , Tag

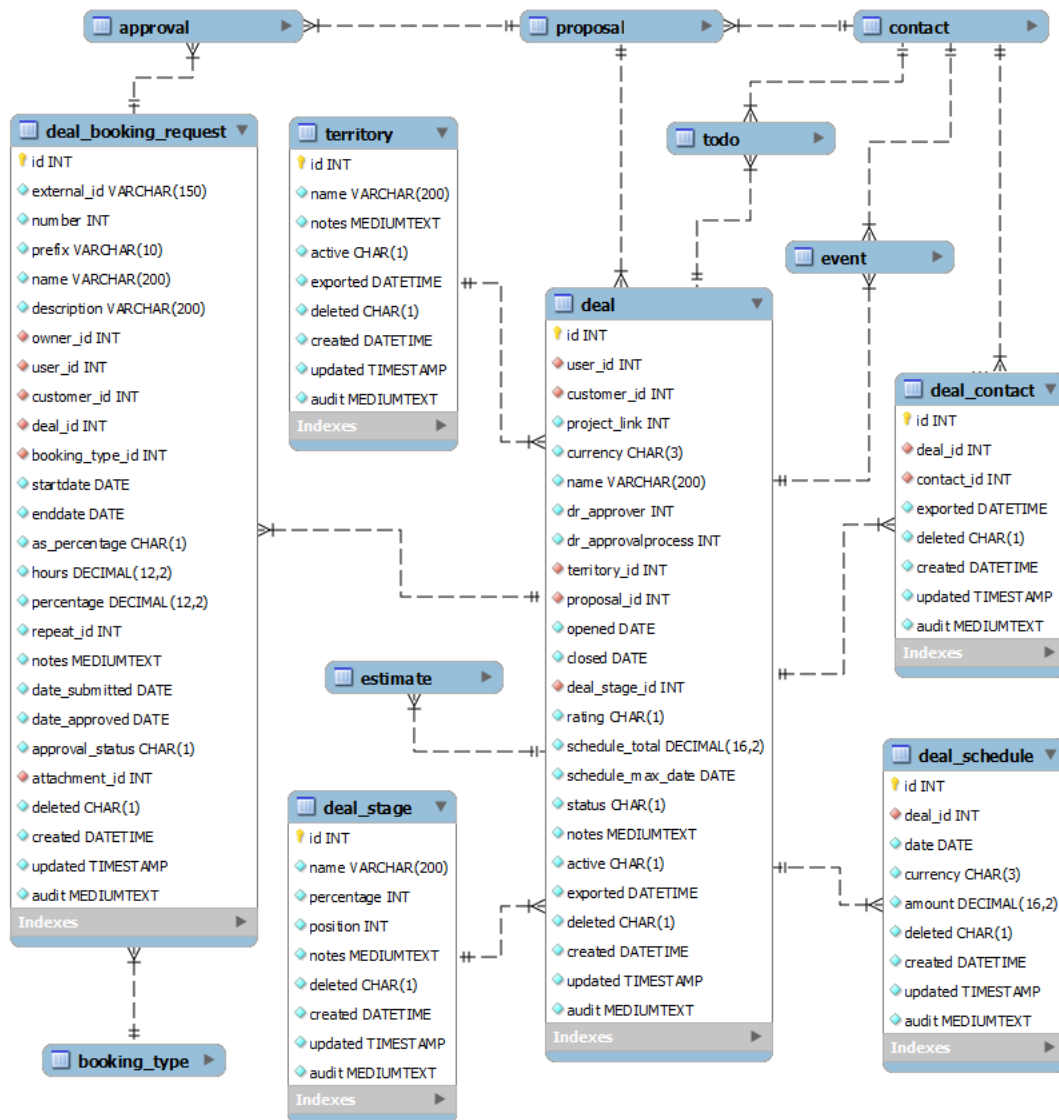
Custom Field



Note: Links to the data dictionary provided in this guide use the generic OpenAir domain www.openair.com. In some instances, you may need to replace the generic domain with your account specific domain in the link URLs to access the OpenAir data dictionary. E.g. to view the data dictionary description of the Project table on Production, use:
https://<companyID>.app.openair.com/database/single_user.html#project

Data Dictionary	Related Diagrams
cust_field , custom_detail , dependent_custom_field , valuelist_custom_field	

Deal

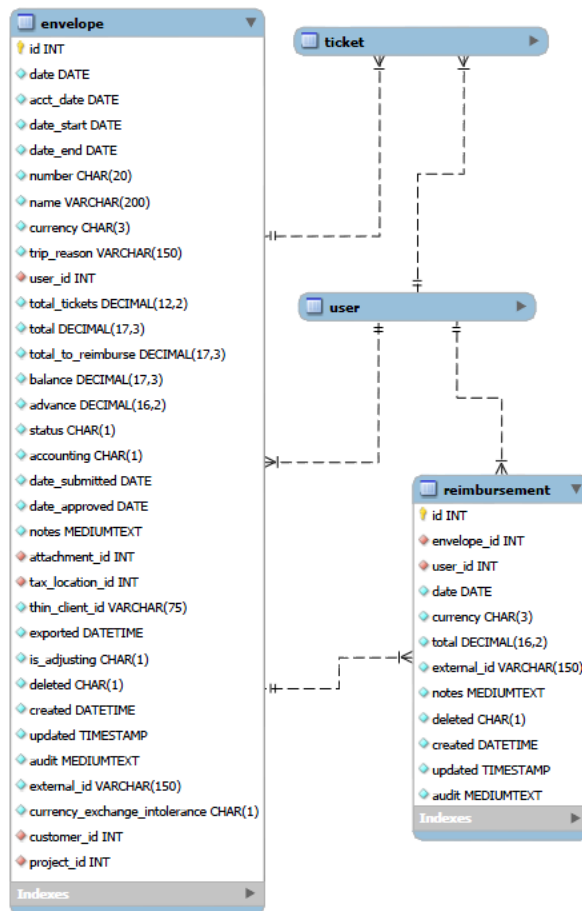


Note: Links to the data dictionary provided in this guide use the generic OpenAir domain www.openair.com. In some instances, you may need to replace the generic domain with your account specific domain in the link URLs to access the OpenAir data dictionary. E.g. to view the data dictionary description of the Project table on Production, use:

https://<companyID>.app.openair.com/database/single_user.html#project

Data Dictionary	Related Diagrams
deal , deal_booking_request , deal_contact , deal_schedule , deal_stage , territory	Approval Process , Proposal

Envelope

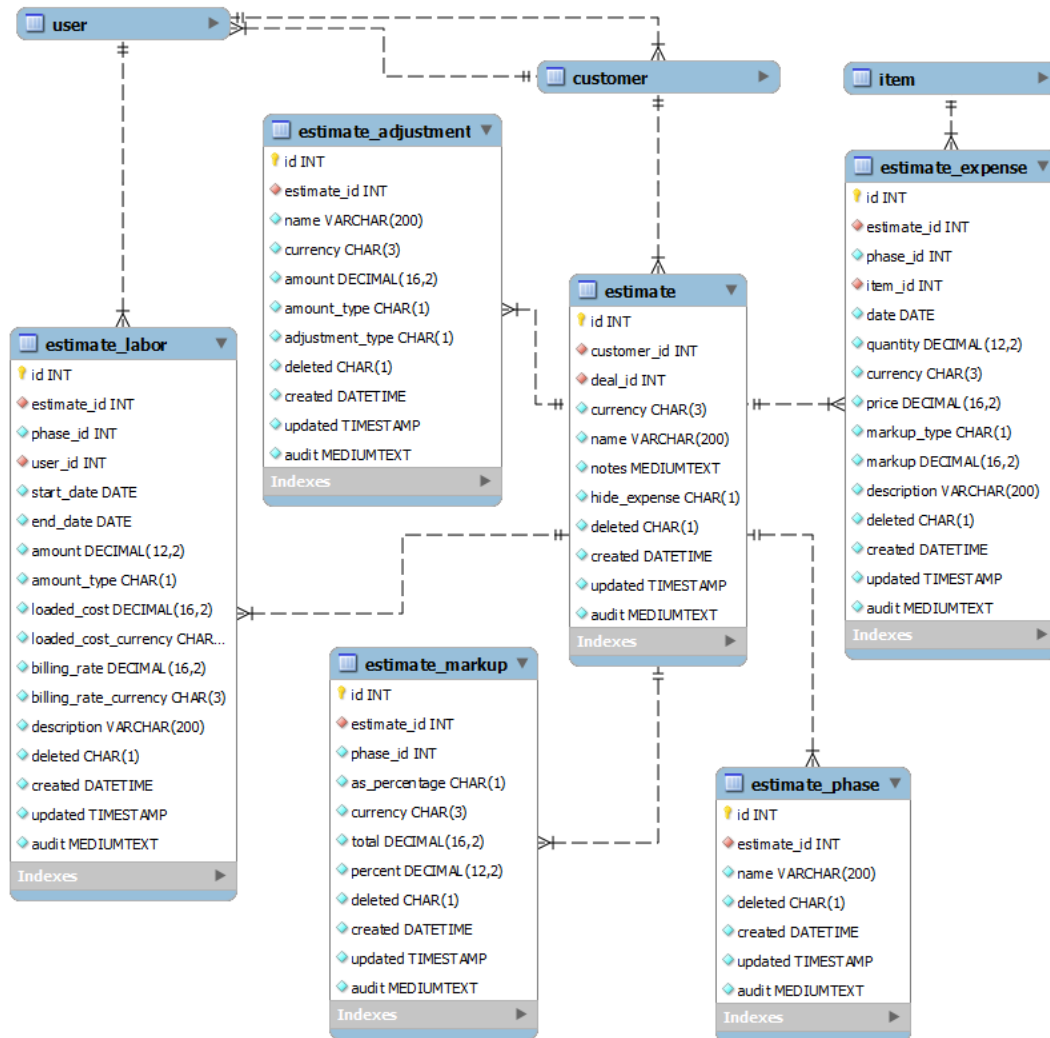


Note: Links to the data dictionary provided in this guide use the generic OpenAir domain www.openair.com. In some instances, you may need to replace the generic domain with your account specific domain in the link URLs to access the OpenAir data dictionary. E.g. to view the data dictionary description of the Project table on Production, use:

https://<companyID>.app.openair.com/database/single_user.html#project

Data Dictionary	Related Diagrams
envelope, reimbursement	Approval Process, Authorization, Customer, Project, Tax, Ticket, User

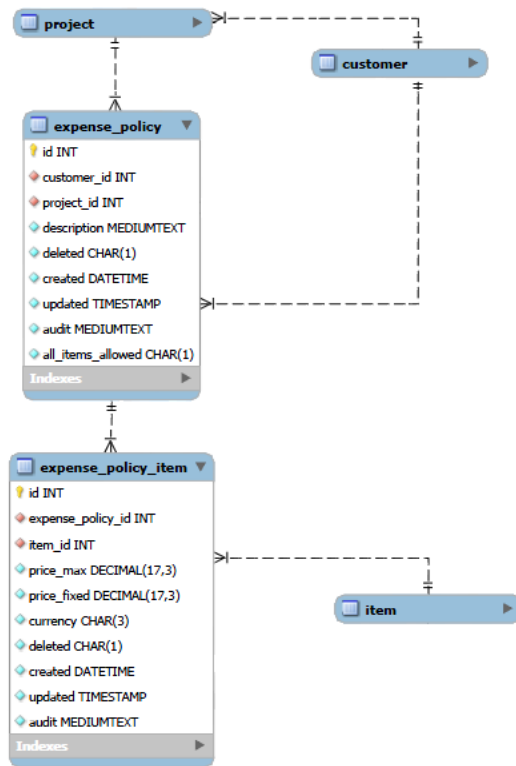
Estimate



Note: Links to the data dictionary provided in this guide use the generic OpenAir domain www.openair.com. In some instances, you may need to replace the generic domain with your account specific domain in the link URLs to access the OpenAir data dictionary. E.g. to view the data dictionary description of the Project table on Production, use:
https://<companyID>.app.openair.com/database/single_user.html#project

Data Dictionary	Related Diagrams
estimate, estimate_adjustment, estimate_expense, estimate_labor, estimate_markup, estimate_phase	Deal

Expense Policy

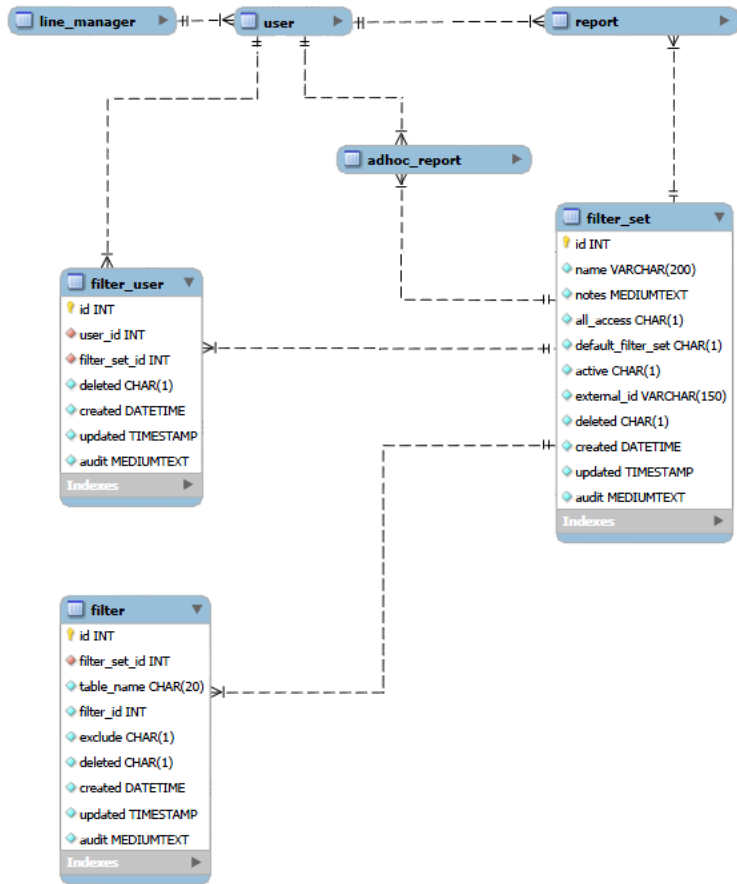


Note: Links to the data dictionary provided in this guide use the generic OpenAir domain www.openair.com. In some instances, you may need to replace the generic domain with your account specific domain in the link URLs to access the OpenAir data dictionary. E.g. to view the data dictionary description of the Project table on Production, use:

https://<companyID>.app.openair.com/database/single_user.html#project

Data Dictionary	Related Diagrams
expense_policy , expense_policy_item	Customer , Item , Project

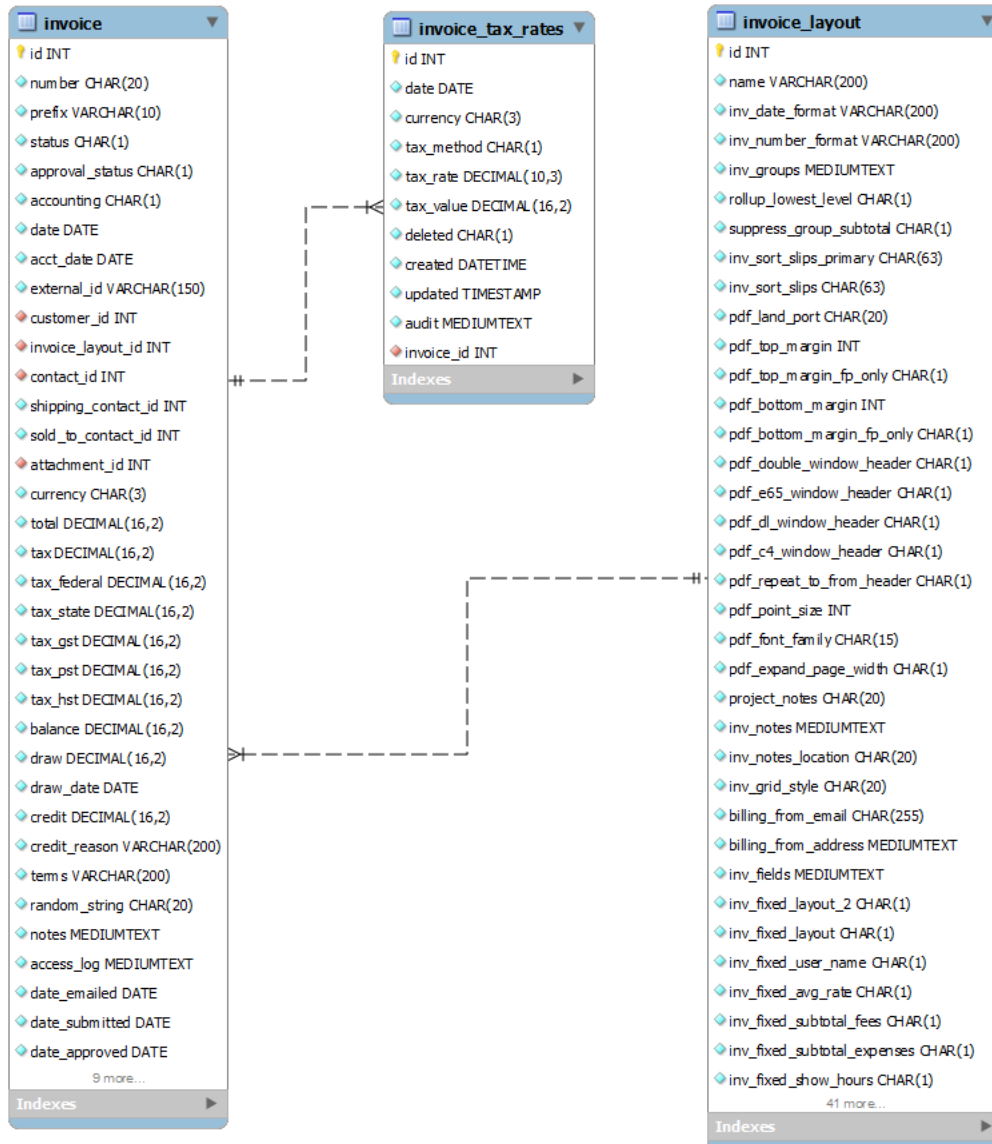
Filter



Note: Links to the data dictionary provided in this guide use the generic OpenAir domain www.openair.com. In some instances, you may need to replace the generic domain with your account specific domain in the link URLs to access the OpenAir data dictionary. E.g. to view the data dictionary description of the Project table on Production, use:
https://<companyID>.app.openair.com/database/single_user.html#project

Data Dictionary	Related Diagrams
filter , filter_set , filter_user	Reporting , User

Invoice

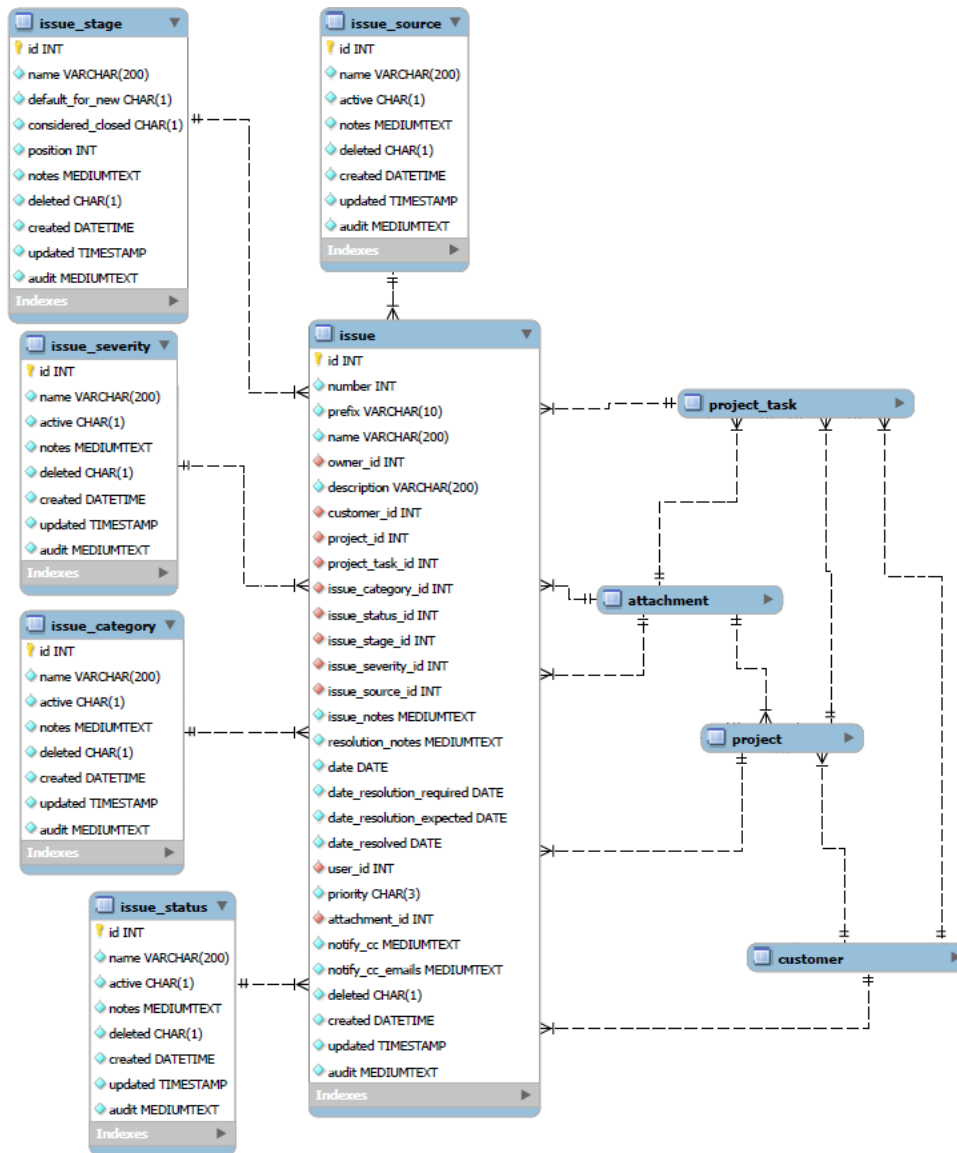


Note: Links to the data dictionary provided in this guide use the generic OpenAir domain www.openair.com. In some instances, you may need to replace the generic domain with your account specific domain in the link URLs to access the OpenAir data dictionary. E.g. to view the data dictionary description of the Project table on Production, use:

https://<companyID>.app.openair.com/database/single_user.html#project

Data Dictionary	Related Diagrams
invoice , invoice_layout , invoice_tax_rates	Approval Process

Issue

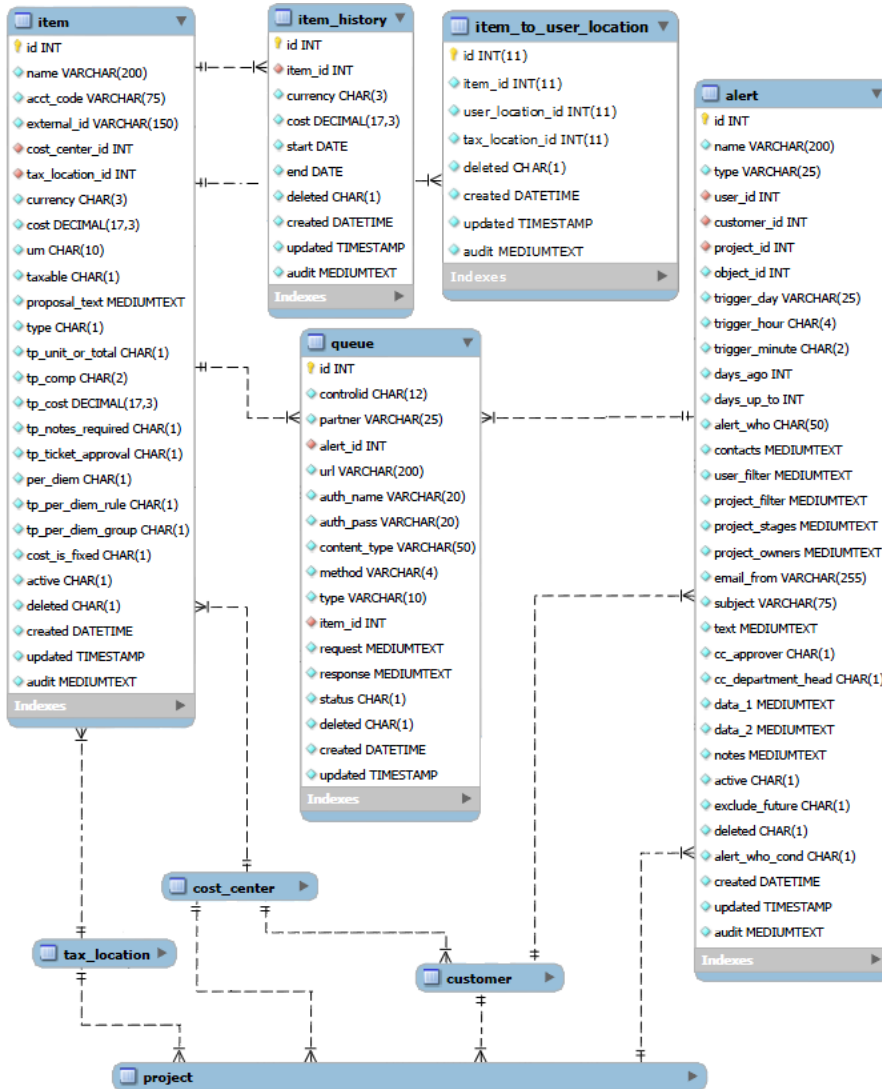


Note: Links to the data dictionary provided in this guide use the generic OpenAir domain www.openair.com. In some instances, you may need to replace the generic domain with your account specific domain in the link URLs to access the OpenAir data dictionary. E.g. to view the data dictionary description of the Project table on Production, use:

https://<companyID>.app.openair.com/database/single_user.html#project

Data Dictionary	Related Diagrams
issue , issue_category , issue_severity , issue_source , issue_stage , issue_status	

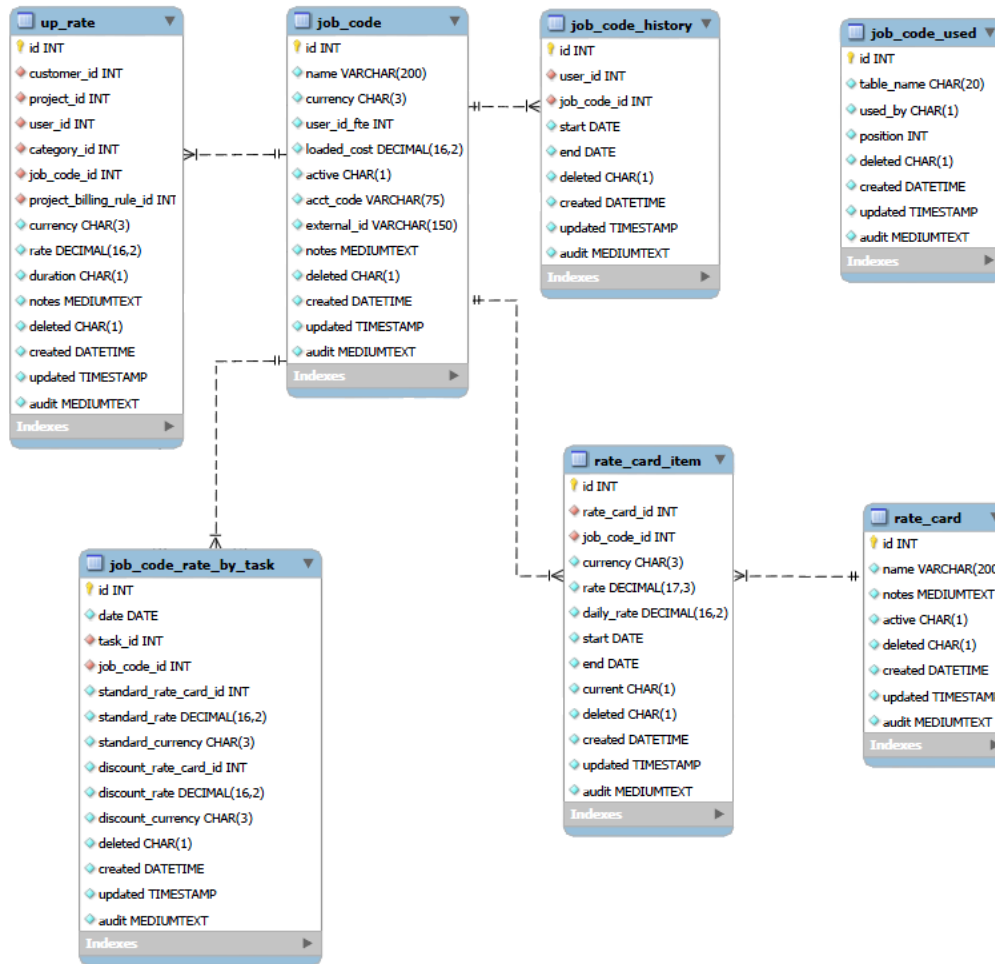
Item



Note: Links to the data dictionary provided in this guide use the generic OpenAir domain www.openair.com. In some instances, you may need to replace the generic domain with your account specific domain in the link URLs to access the OpenAir data dictionary. E.g. to view the data dictionary description of the Project table on Production, use:
https://<companyID>.app.openair.com/database/single_user.html#project

Data Dictionary	Related Diagrams
alert, item, item_to_user_location, item_history, queue	Cost, Estimate, Expense Policy, Proposal

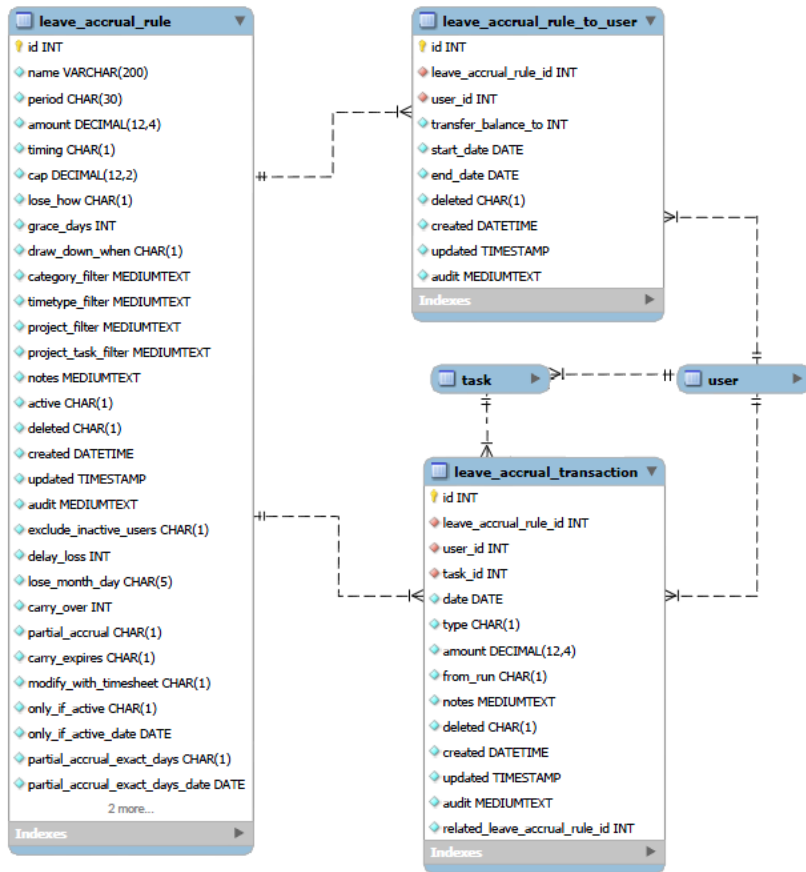
Job Rate



Note: Links to the data dictionary provided in this guide use the generic OpenAir domain www.openair.com. In some instances, you may need to replace the generic domain with your account specific domain in the link URLs to access the OpenAir data dictionary. E.g. to view the data dictionary description of the Project table on Production, use:
https://<companyID>.app.openair.com/database/single_user.html#project

Data Dictionary	Related Diagrams
job_code , job_code_history , job_code_rate_by_task , job_code_used , rate_card , rate_card_item , up_rate	Project Pricing

Leave Accrual



Note: Links to the data dictionary provided in this guide use the generic OpenAir domain www.openair.com. In some instances, you may need to replace the generic domain with your account specific domain in the link URLs to access the OpenAir data dictionary. E.g. to view the data dictionary description of the Project table on Production, use:
https://<companyID>.app.openair.com/database/single_user.html#project

Data Dictionary	Related Diagrams
leave_accrual_rule , leave_accrual_rule_to_user , leave_accrual_transaction	

Miscellaneous

The image displays a collection of 11 database table definitions, each with a list of columns and their data types. The tables are:

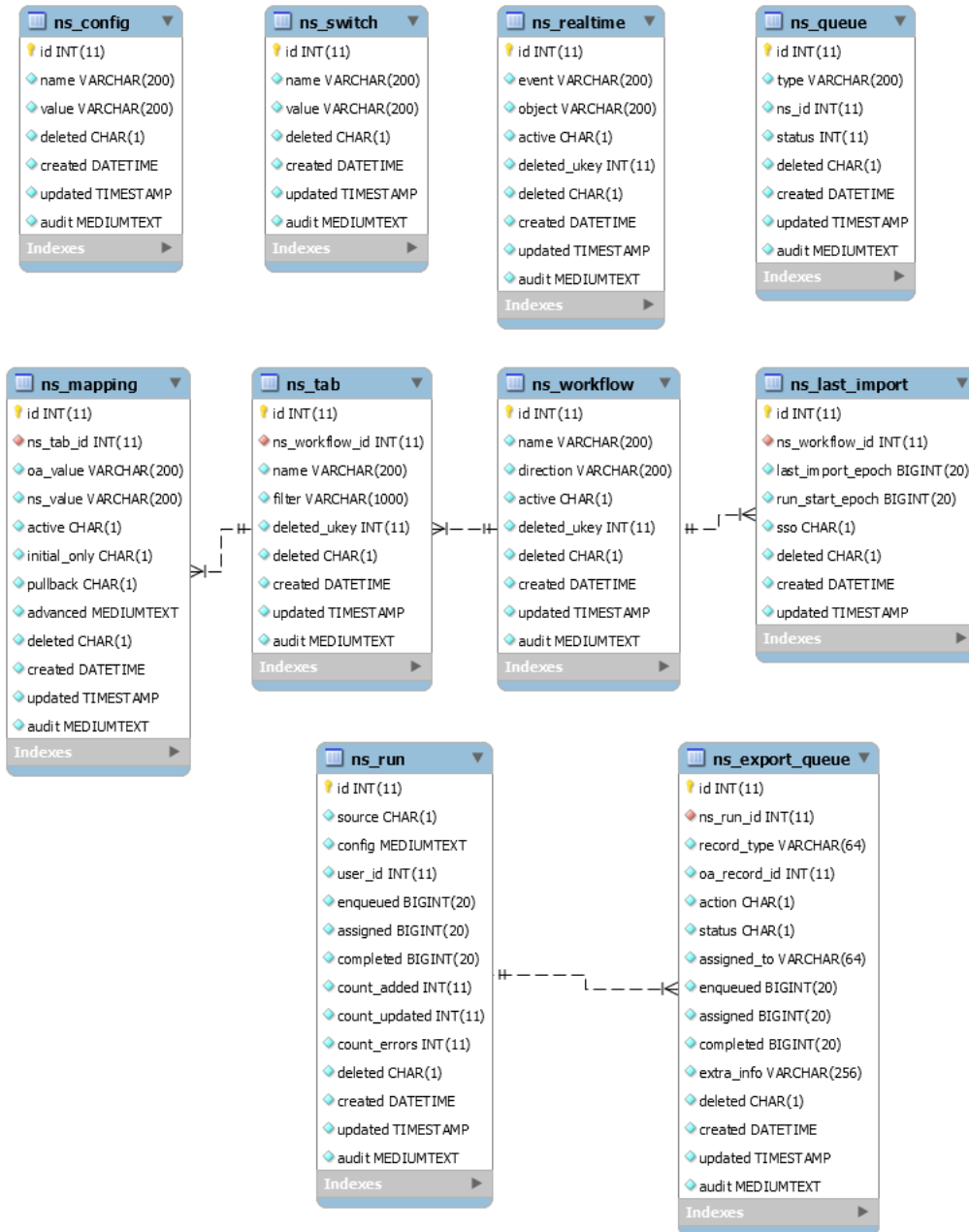
- approval_confirmation_status**: id INT, table_name VARCHAR(200), record_id INT, submitted_submitted CHAR(1), submitted_approved CHAR(1), submitted_rejected CHAR(1), approved_submitted CHAR(1), approved_approved CHAR(1), approved_rejected CHAR(1), deleted CHAR(1), created DATETIME, updated TIMESTAMP, audit MEDIUMTEXT.
- assign_by_day**: id INT, date DATE, project_task_id INT, projecttask_type_id INT, customer_id INT, project_id INT, user_id INT, cost_center_id INT, category_id INT, job_code_id INT, hours DECIMAL(12,5), deleted CHAR(1), created DATETIME, updated TIMESTAMP.
- baseline_by_day**: id INT, date DATE, project_task_id INT, projecttask_type_id INT, customer_id INT, project_id INT, user_id INT, cost_center_id INT, category_id INT, job_code_id INT, hours DECIMAL(12,5), deleted CHAR(1), created DATETIME, updated TIMESTAMP, project_baseline_id INT.
- email_template**: id INT, association CHAR(1), type CHAR(2), customer_id INT, project_id INT, booking_request_id INT, project_task_id INT, name VARCHAR(200), subject VARCHAR(255), body MEDIUMTEXT, notes MEDIUMTEXT, active CHAR(1), deleted CHAR(1), created DATETIME, updated TIMESTAMP, audit MEDIUMTEXT.
- target_utilization**: id INT, user_id INT, start_date DATE, end_date DATE, percentage DECIMAL(12,2), dirty CHAR(1), deleted CHAR(1), created DATETIME, updated TIMESTAMP, audit MEDIUMTEXT.
- import_export_state**: id INT, table_name VARCHAR(200), record_id INT, direction CHAR(1), any_application CHAR(1), application_lawson_digital CHAR(1), application_netsuite CHAR(1), application_outlook CHAR(1), application_pfw CHAR(1), application_quickbooks CHAR(1), application_text CHAR(1), application_workday CHAR(1), application_vertex CHAR(1), dirty CHAR(1), deleted CHAR(1), created DATETIME, updated TIMESTAMP, audit MEDIUMTEXT.
- import_export**: id INT, table_name VARCHAR(200), record_id INT, application VARCHAR(200), external_id VARCHAR(160), last_import DATETIME, last_export DATETIME, deleted CHAR(1), created DATETIME, updated TIMESTAMP, audit MEDIUMTEXT.
- repeat**: id INT, frequency CHAR(1), every INT, end DATE, occur_number INT, how_end CHAR(1), exclude_dow CHAR(13), deleted CHAR(1), created DATETIME, updated TIMESTAMP, audit MEDIUMTEXT.
- snapshot**: id INT, code VARCHAR(200), name VARCHAR(200), user_id INT, customer_id INT, project_id INT, setting MEDIUMTEXT, export CHAR(1), default_snapshot CHAR(1), deleted CHAR(1), created DATETIME, updated TIMESTAMP, audit MEDIUMTEXT.
- short_url**: id INT, url MEDIUMTEXT, version CHAR(1), secret1 INT, secret2 INT, deleted CHAR(1), created DATETIME, updated TIMESTAMP, audit MEDIUMTEXT.
- registry_entry**: id INT, registry_entry_type CHAR(30), registry_entry_record_id INT, registry_type CHAR(30), registry_record_id INT, deleted CHAR(1), created DATETIME, updated TIMESTAMP, audit MEDIUMTEXT.

Note: Links to the data dictionary provided in this guide use the generic OpenAir domain www.openair.com. In some instances, you may need to replace the generic domain with your account specific domain in the link URLs to access the OpenAir data dictionary. E.g. to view the data dictionary description of the Project table on Production, use:

https://<companyID>.app.openair.com/database/single_user.html#project

Data Dictionary	Related Diagrams
approval_confirmation_status , assign_by_day , baseline_by_day , email_template , import_export , import_export_state , repeat , short_url , snapshot , registry_entry , target_utilization	

NetSuite Connector

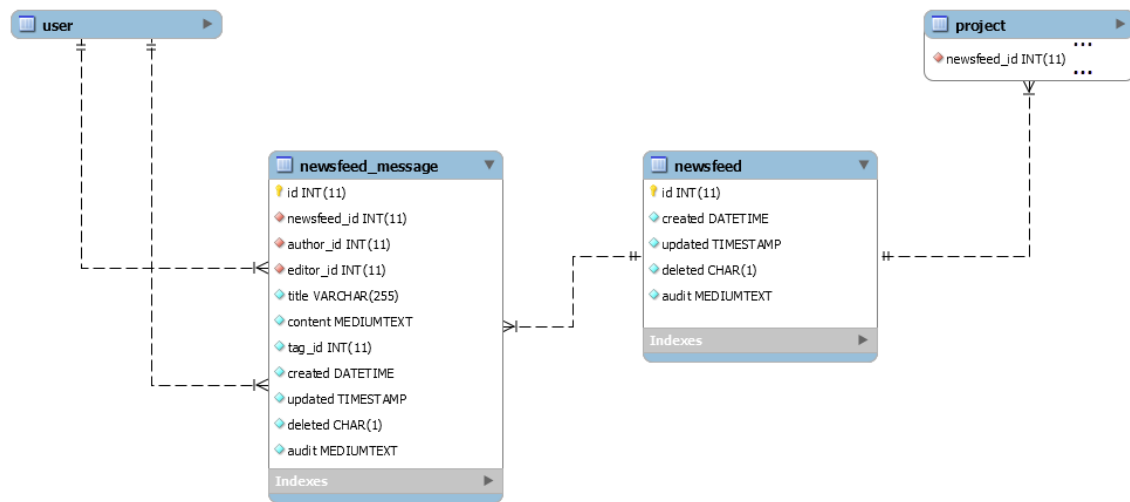


Note: Links to the data dictionary provided in this guide use the generic OpenAir domain www.openair.com. In some instances, you may need to replace the generic domain with your account specific domain in the link URLs to access the OpenAir data dictionary. E.g. to view the data dictionary description of the Project table on Production, use:

https://<companyID>.app.openair.com/database/single_user.html#project

Data Dictionary	Related Diagrams
ns_config , ns_export_queue , ns_last_import , ns_mapping , ns_realtime , ns_queue , ns_run , ns_switch , ns_tab , ns_workflow	

News Feed

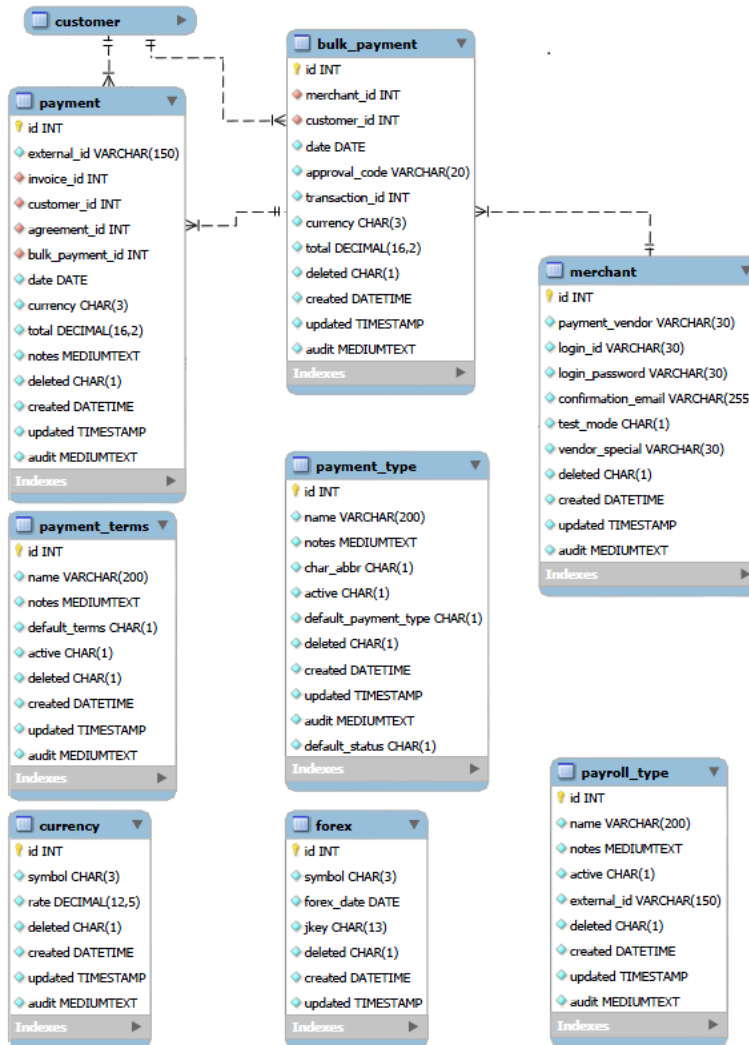


Note: Links to the data dictionary provided in this guide use the generic OpenAir domain www.openair.com. In some instances, you may need to replace the generic domain with your account specific domain in the link URLs to access the OpenAir data dictionary. E.g. to view the data dictionary description of the Project table on Production, use:

https://<companyID>.app.openair.com/database/single_user.html#project

Data Dictionary	Related Diagrams
newsfeed , newsfeed_message , project , user	

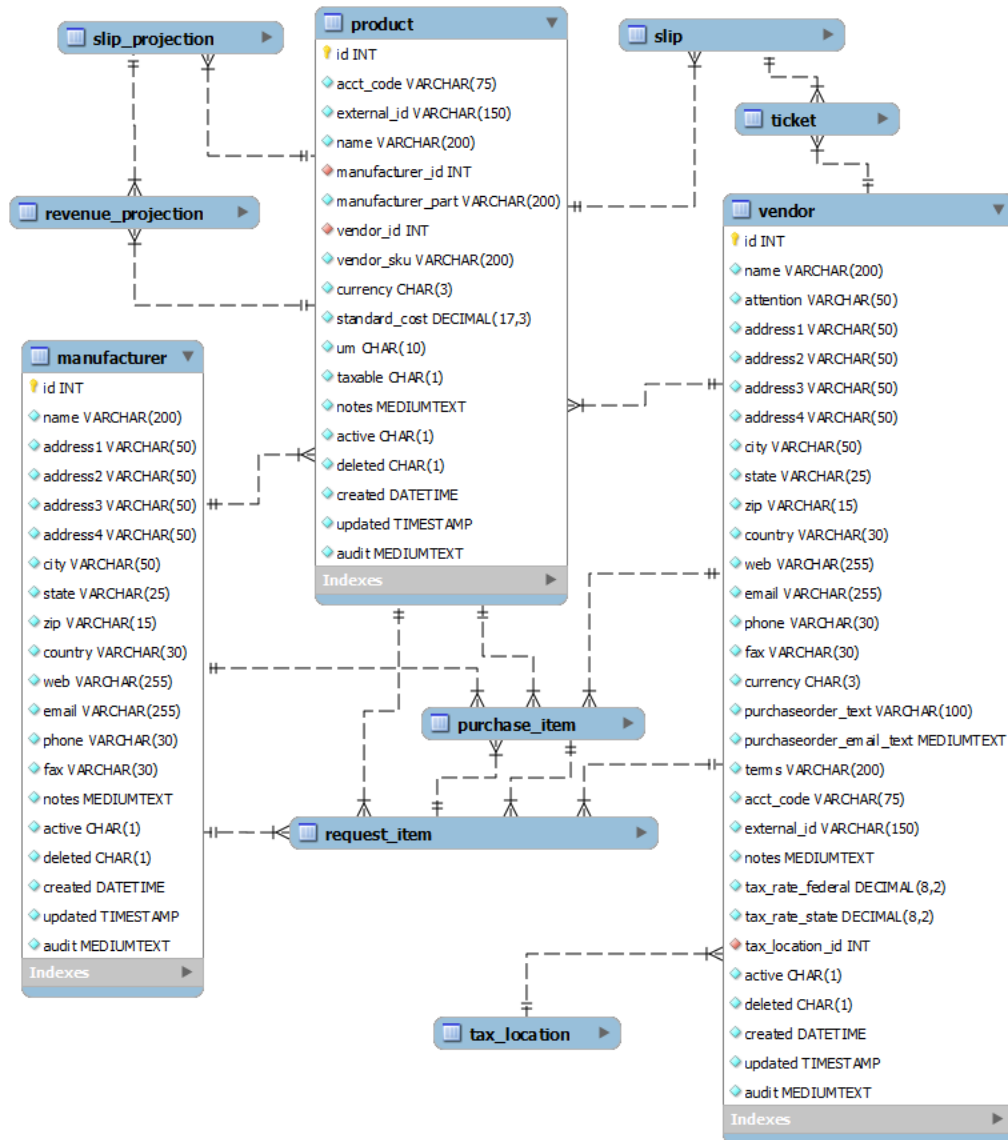
Payment



Note: Links to the data dictionary provided in this guide use the generic OpenAir domain www.openair.com. In some instances, you may need to replace the generic domain with your account specific domain in the link URLs to access the OpenAir data dictionary. E.g. to view the data dictionary description of the Project table on Production, use:
https://<companyID>.app.openair.com/database/single_user.html#project

Data Dictionary	Related Diagrams
bulk_payment, currency, forex, merchant, payment, payment_terms, payment_type, payroll_type	Billing Customer, Slip, Ticket

Product

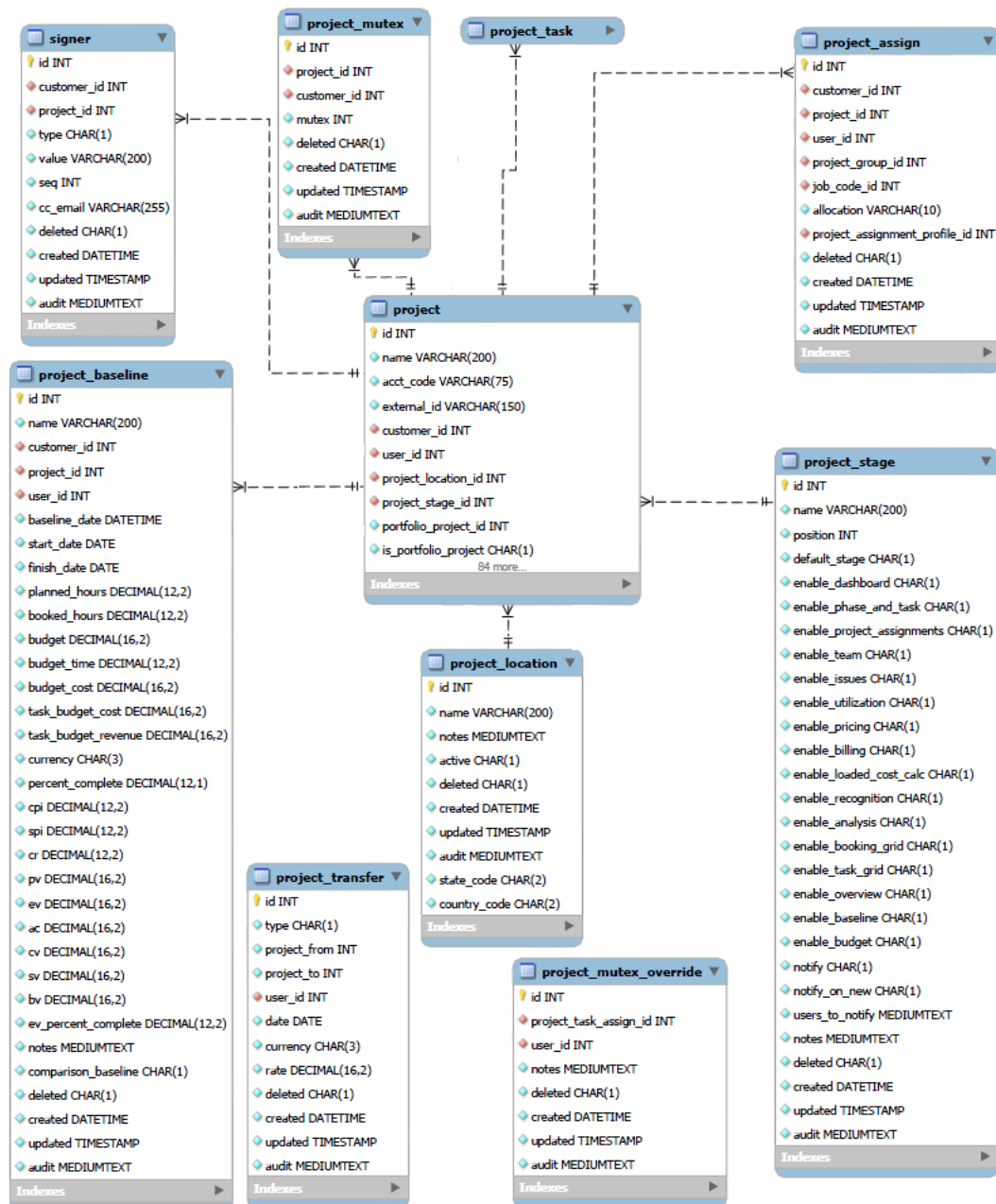


Note: Links to the data dictionary provided in this guide use the generic OpenAir domain www.openair.com. In some instances, you may need to replace the generic domain with your account specific domain in the link URLs to access the OpenAir data dictionary. E.g. to view the data dictionary description of the Project table on Production, use:

https://<companyID>.app.openair.com/database/single_user.html#project

Data Dictionary	Related Diagrams
manufacturer, product, vendor	Purchase Item, Slip, Tax, Ticket

Project

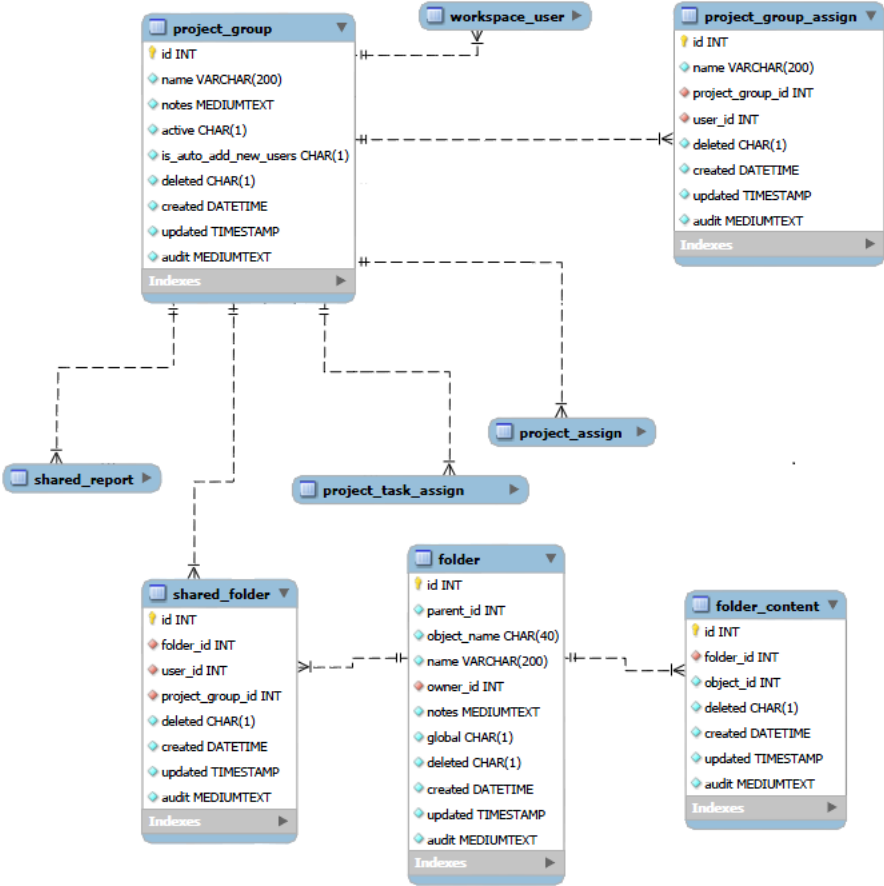


Note: Links to the data dictionary provided in this guide use the generic OpenAir domain www.openair.com. In some instances, you may need to replace the generic domain with your account specific domain in the link URLs to access the OpenAir data dictionary. E.g. to view the data dictionary description of the Project table on Production, use:

https://<companyID>.app.openair.com/database/single_user.html#project

Data Dictionary	Related Diagrams
product , project_assign , project_baseline , project_location , project_mutex , project_mutex_override , project_stage , project_transfer , signer	Customer, Project Group, Project Pricing, Project Task

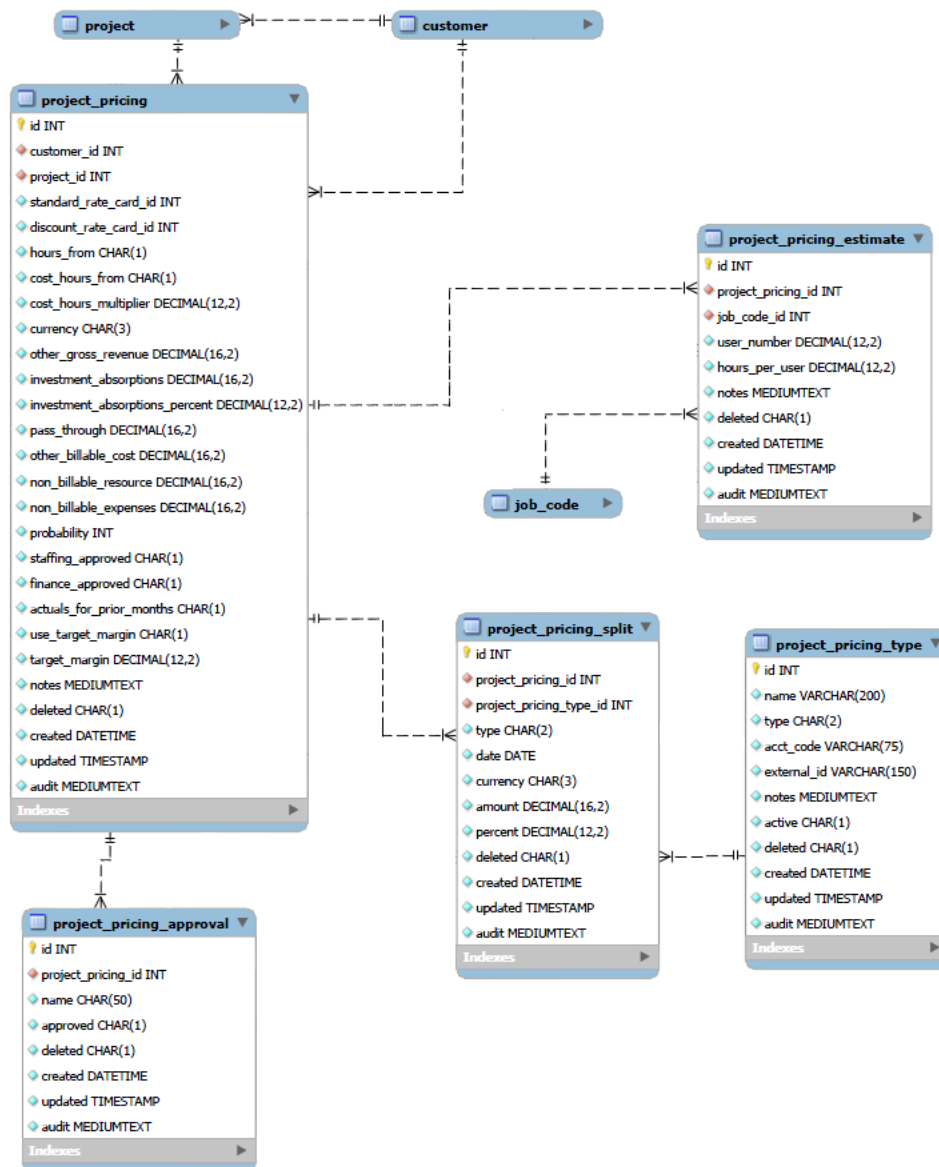
Project Group



Note: Links to the data dictionary provided in this guide use the generic OpenAir domain www.openair.com. In some instances, you may need to replace the generic domain with your account specific domain in the link URLs to access the OpenAir data dictionary. E.g. to view the data dictionary description of the Project table on Production, use:
https://<companyID>.app.openair.com/database/single_user.html#project

Data Dictionary	Related Diagrams
folder, folder_content, project_group, project_group_assign, shared_folder	Project Task, Reporting, Workspace

Project Pricing

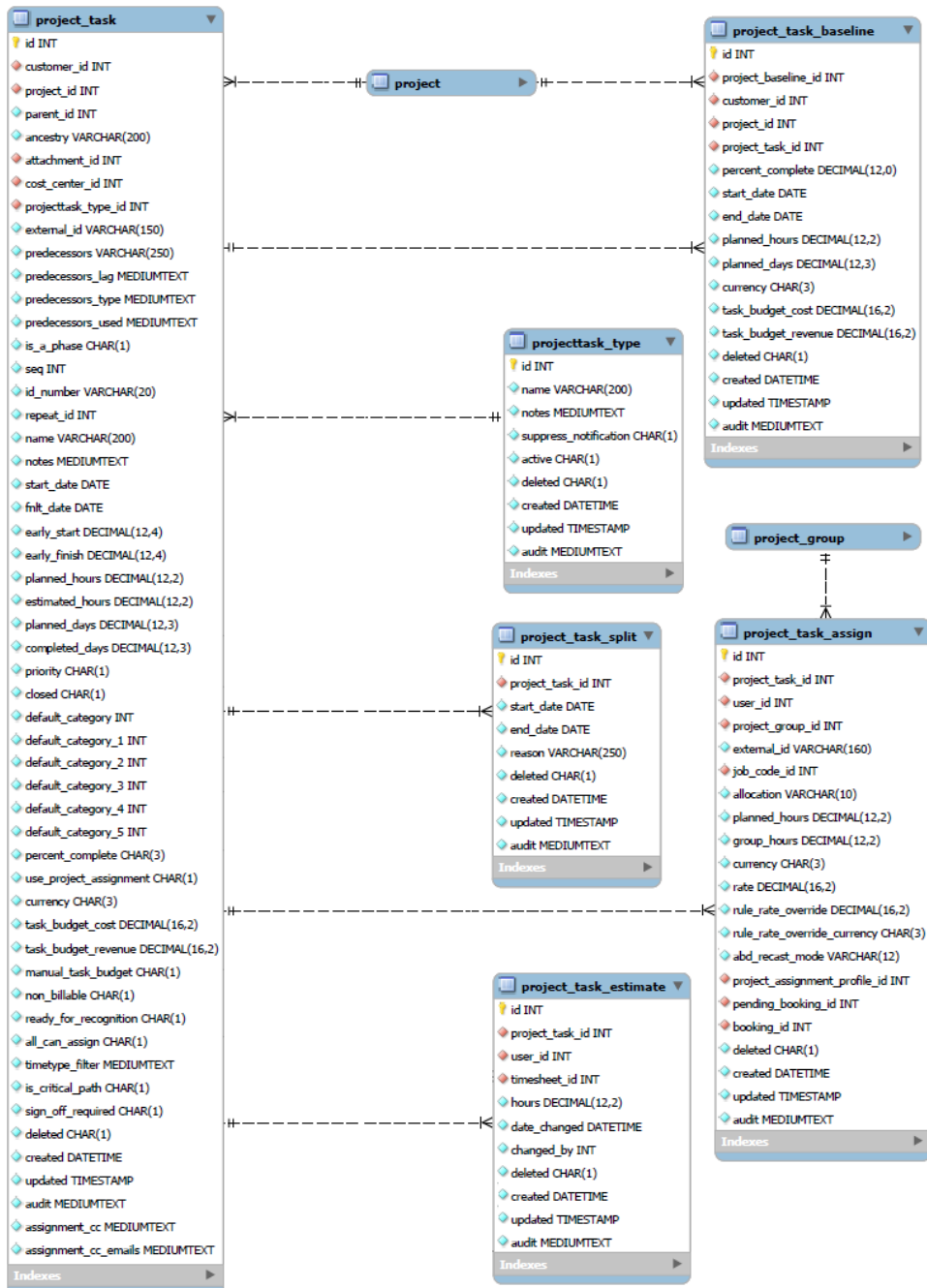


Note: Links to the data dictionary provided in this guide use the generic OpenAir domain www.openair.com. In some instances, you may need to replace the generic domain with your account specific domain in the link URLs to access the OpenAir data dictionary. E.g. to view the data dictionary description of the Project table on Production, use:

https://<companyID>.app.openair.com/database/single_user.html#project

Data Dictionary	Related Diagrams
project_pricing , project_pricing_approval , project_pricing_estimate , project_pricing_split , project_pricing_type	

Project Task

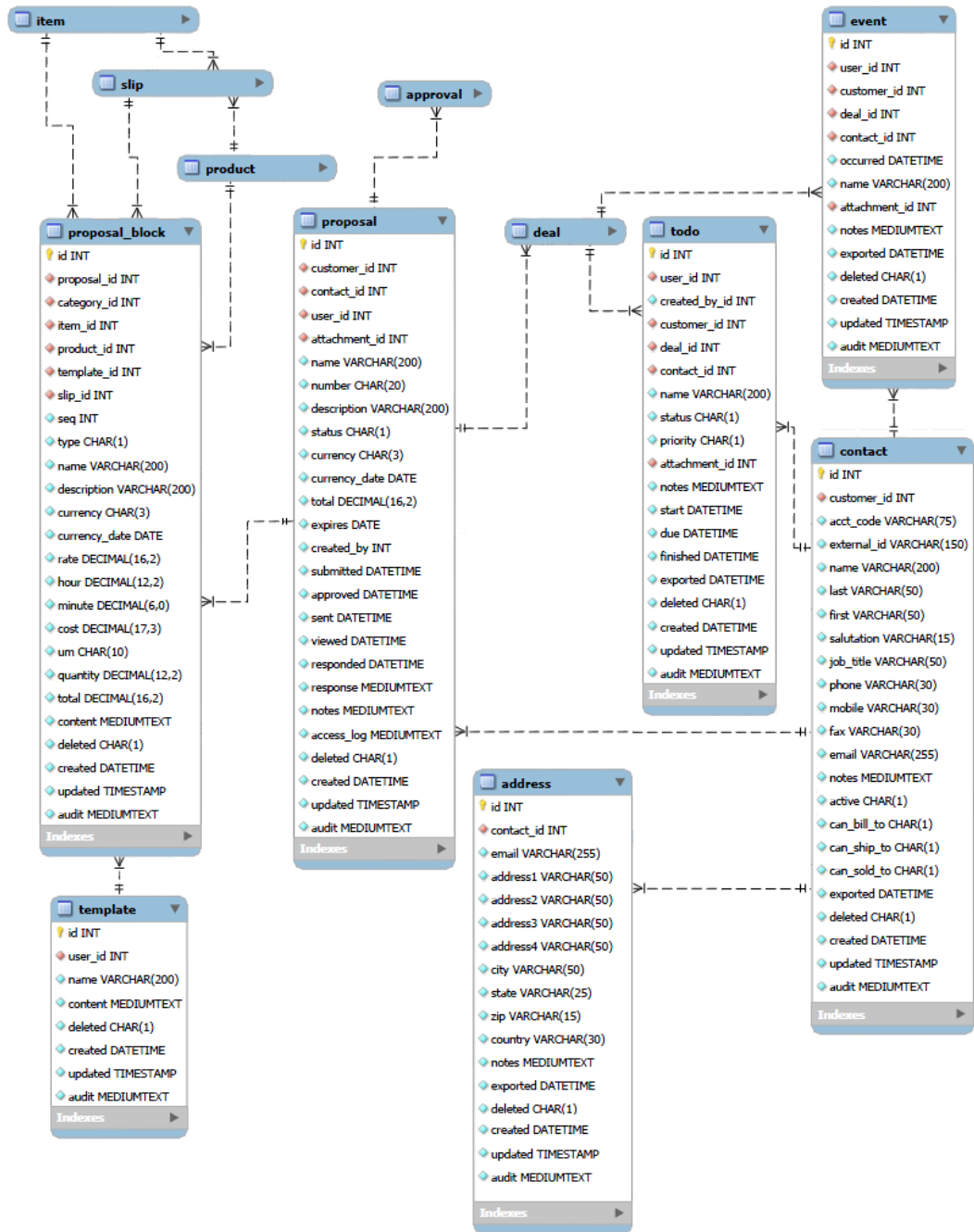


Note: Links to the data dictionary provided in this guide use the generic OpenAir domain `www.openair.com`. In some instances, you may need to replace the generic domain with your account specific domain in the link URLs to access the OpenAir data dictionary. E.g. to view the data dictionary description of the Project table on Production, use:

`https://<companyID>.app.openair.com/database/single_user.html#project`

Data Dictionary	Related Diagrams
project_task , project_task_assign , project_task_baseline , project_task_estimate , project_task_split , projecttask_type	Issue , Project , Reporting , Resource Profile , Schedule , Slip , Time

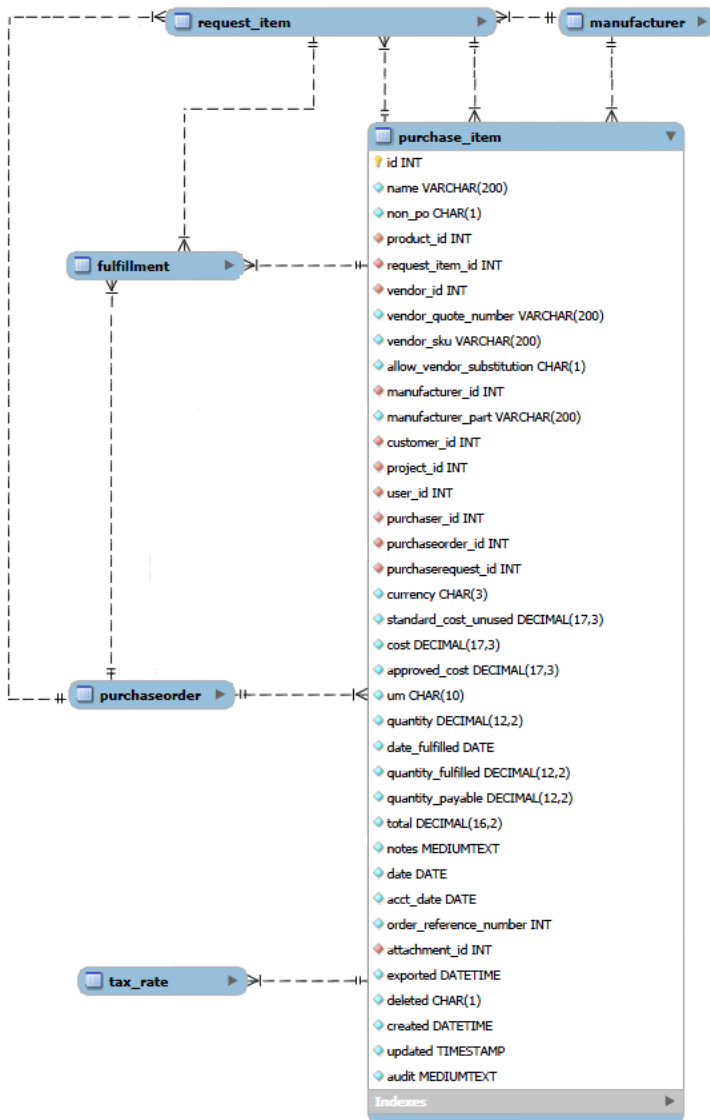
Proposal



Note: Links to the data dictionary provided in this guide use the generic OpenAir domain www.openair.com. In some instances, you may need to replace the generic domain with your account specific domain in the link URLs to access the OpenAir data dictionary. E.g. to view the data dictionary description of the Project table on Production, use:
https://<companyID>.app.openair.com/database/single_user.html#project

Data Dictionary	Related Diagrams
address, contact, event, template, todo, proposal, proposal_block	Approval Process, Deal, Item, Product, Slip

Purchase Item

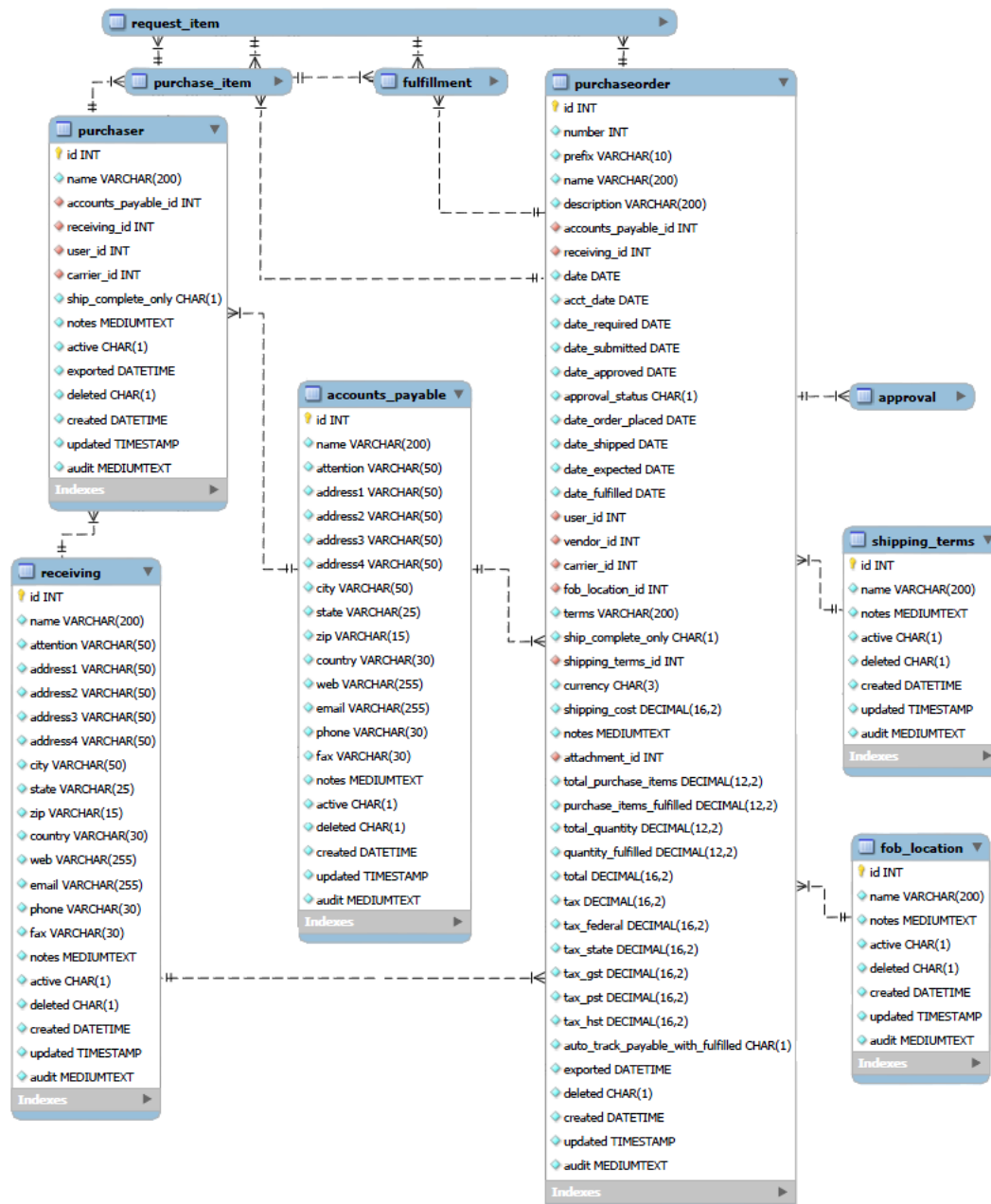


Note: Links to the data dictionary provided in this guide use the generic OpenAir domain www.openair.com. In some instances, you may need to replace the generic domain with your account specific domain in the link URLs to access the OpenAir data dictionary. E.g. to view the data dictionary description of the Project table on Production, use:

https://<companyID>.app.openair.com/database/single_user.html#project

Data Dictionary	Related Diagrams
purchase_item	Customer , Project , Purchase Order , Request Item

Purchase Order

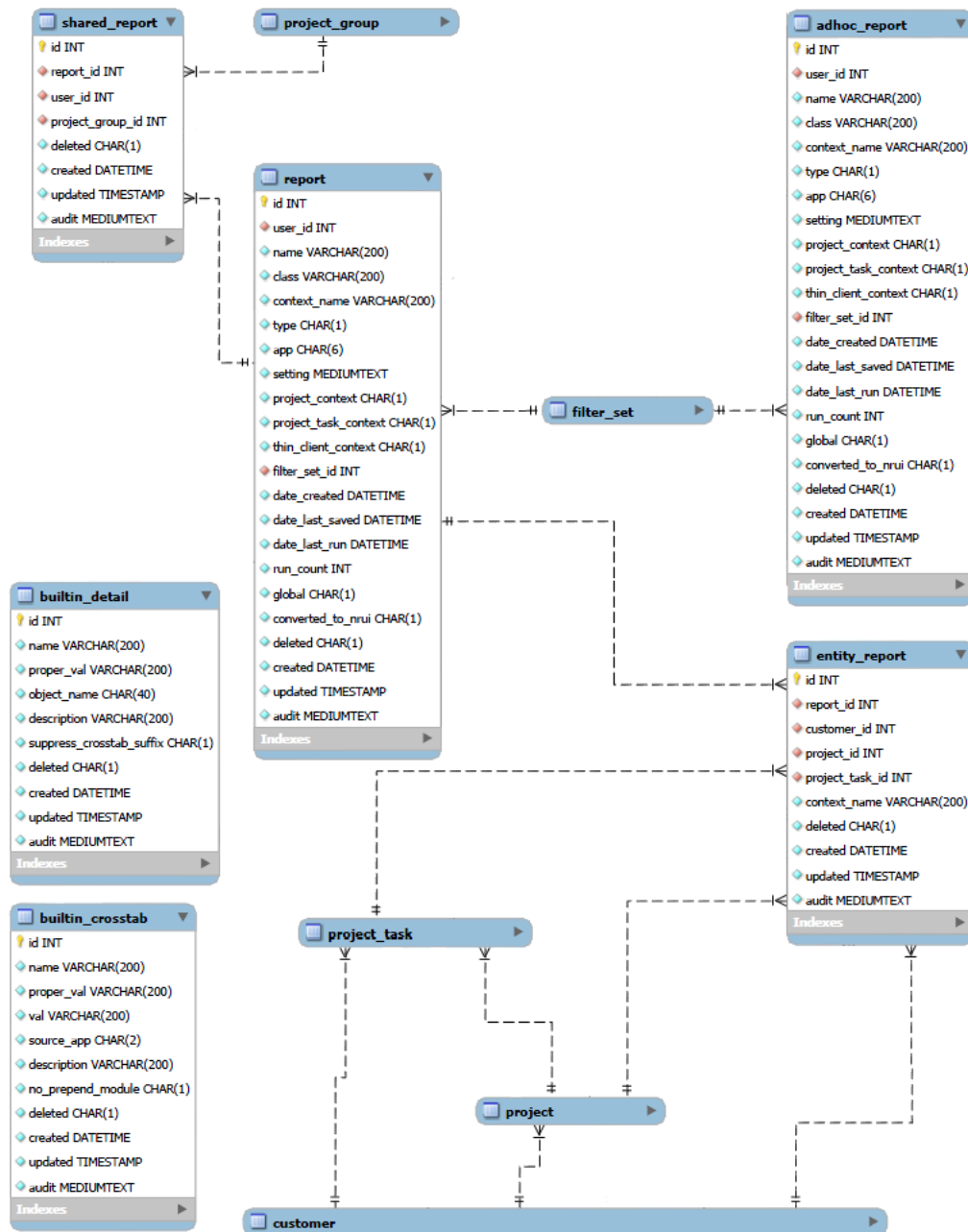


Note: Links to the data dictionary provided in this guide use the generic OpenAir domain `www.openair.com`. In some instances, you may need to replace the generic domain with your account specific domain in the link URLs to access the OpenAir data dictionary. E.g. to view the data dictionary description of the Project table on Production, use:

`https://<companyID>.app.openair.com/database/single_user.html#project`

Data Dictionary	Related Diagrams
accounts_payable , fob_location , purchaseorder , purchaser , receiving , shipping_terms	Purchase Item , Request Item

Reporting

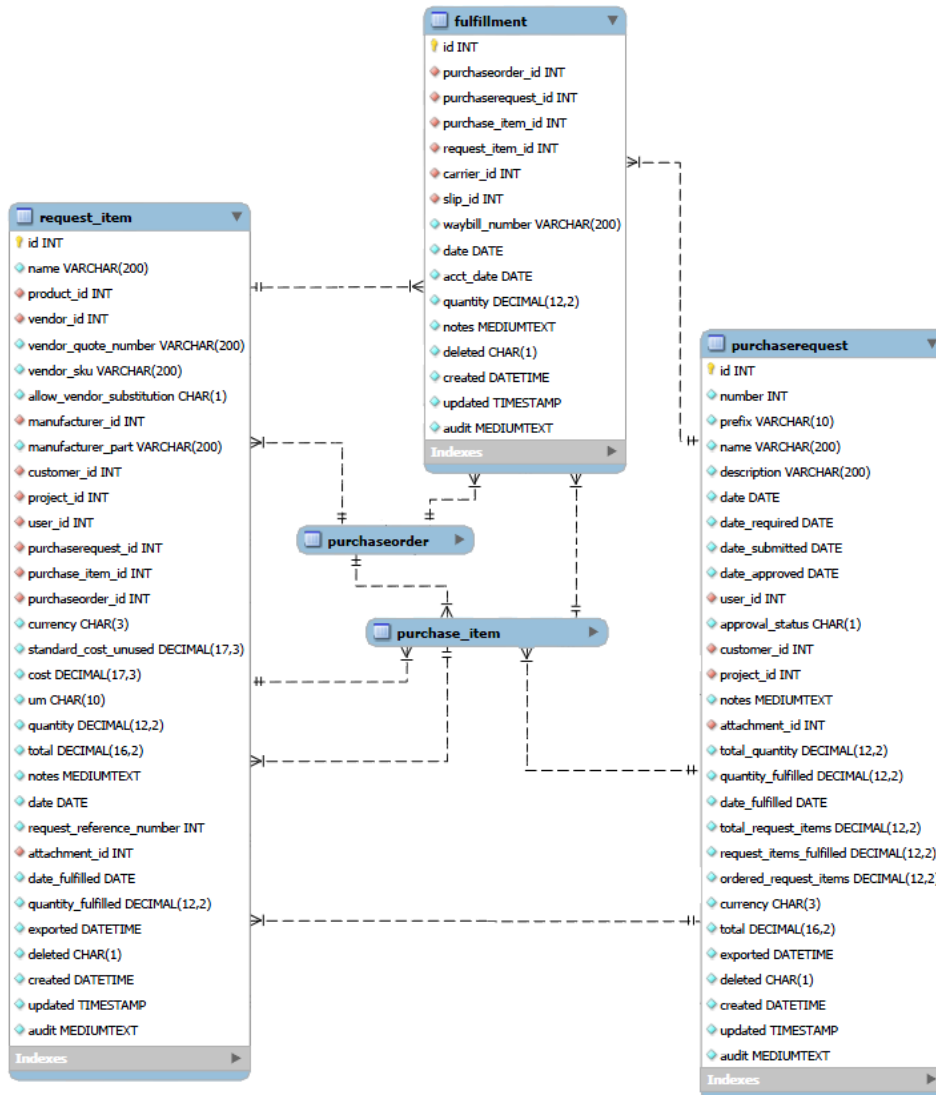


Note: Links to the data dictionary provided in this guide use the generic OpenAir domain www.openair.com. In some instances, you may need to replace the generic domain with your account specific domain in the link URLs to access the OpenAir data dictionary. E.g. to view the data dictionary description of the Project table on Production, use:

https://<companyID>.app.openair.com/database/single_user.html#project

Data Dictionary	Related Diagrams
adhoc_report , builtin_crosstab , builtin_detail , entity_report , shared_report	

Request Item

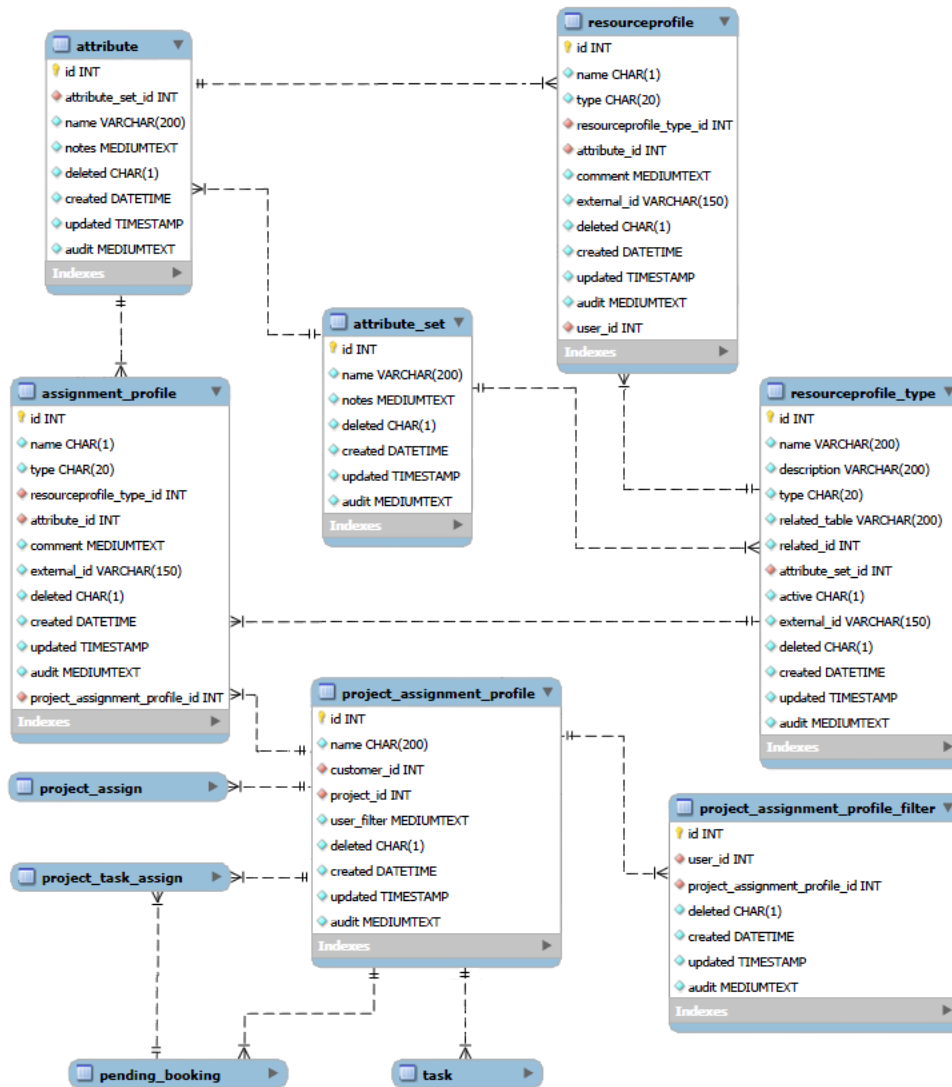


Note: Links to the data dictionary provided in this guide use the generic OpenAir domain www.openair.com. In some instances, you may need to replace the generic domain with your account specific domain in the link URLs to access the OpenAir data dictionary. E.g. to view the data dictionary description of the Project table on Production, use:

https://<companyID>.app.openair.com/database/single_user.html#project

Data Dictionary	Related Diagrams
fulfillment, purchaserequest, request_item	Purchase Item, Purchase Order

Resource Profile

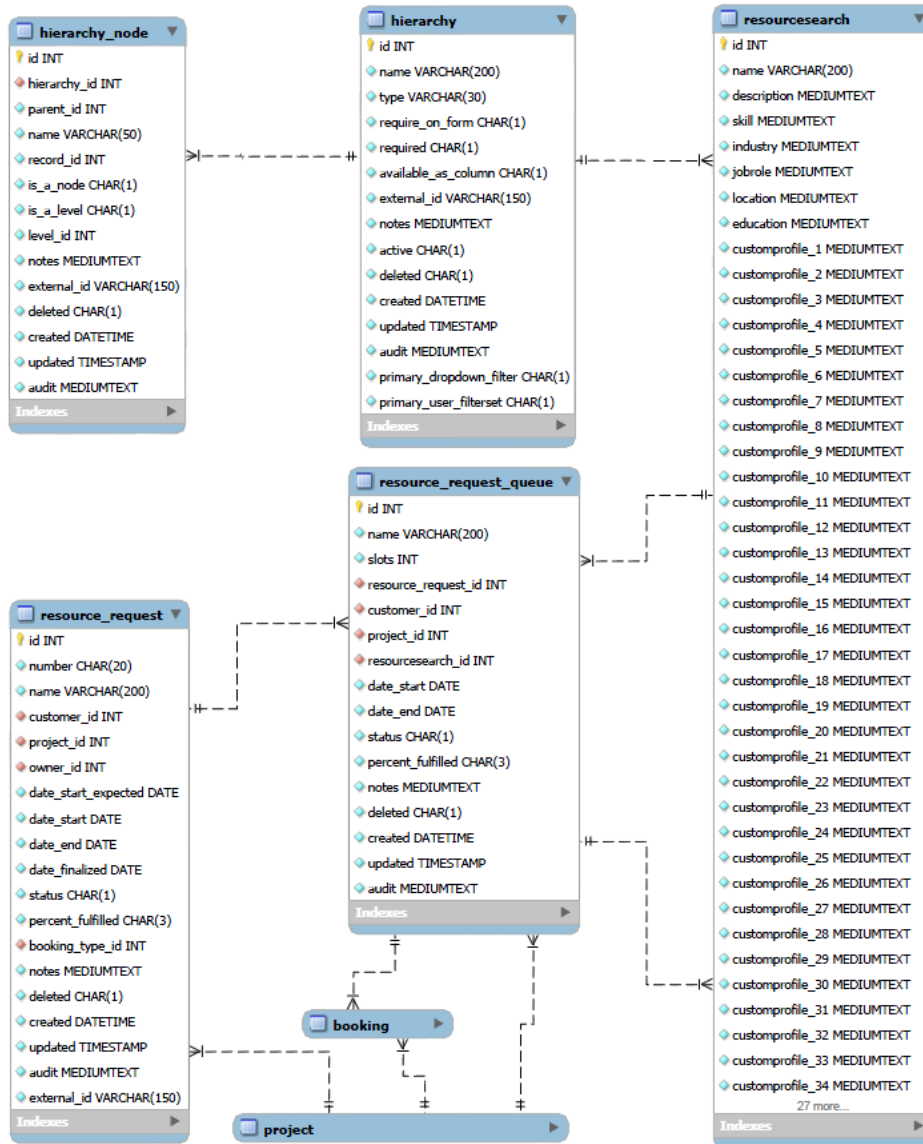


Note: Links to the data dictionary provided in this guide use the generic OpenAir domain www.openair.com. In some instances, you may need to replace the generic domain with your account specific domain in the link URLs to access the OpenAir data dictionary. E.g. to view the data dictionary description of the Project table on Production, use:

https://<companyID>.app.openair.com/database/single_user.html#project

Data Dictionary	Related Diagrams
assignment_profile, attribute, attribute_set, project_assignment_profile, project_assignment_profile_filter, resourceprofile, resourceprofile_type	Booking, Customer, Project, Project Task

Resource Request

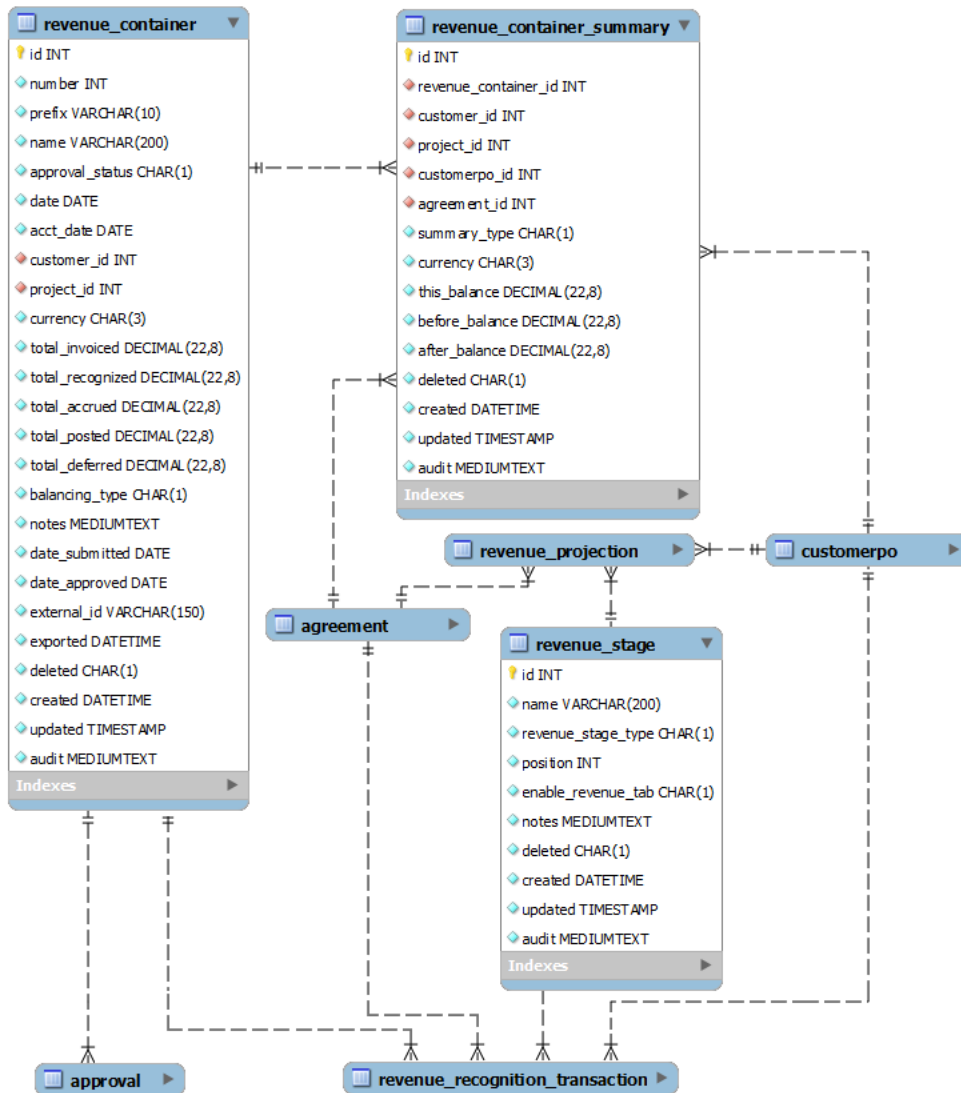


Note: Links to the data dictionary provided in this guide use the generic OpenAir domain www.openair.com. In some instances, you may need to replace the generic domain with your account specific domain in the link URLs to access the OpenAir data dictionary. E.g. to view the data dictionary description of the Project table on Production, use:

https://<companyID>.app.openair.com/database/single_user.html#project

Data Dictionary	Related Diagrams
hierarchy , hierarchy_node , resource_request , resource_request_queue , resourcesearch	

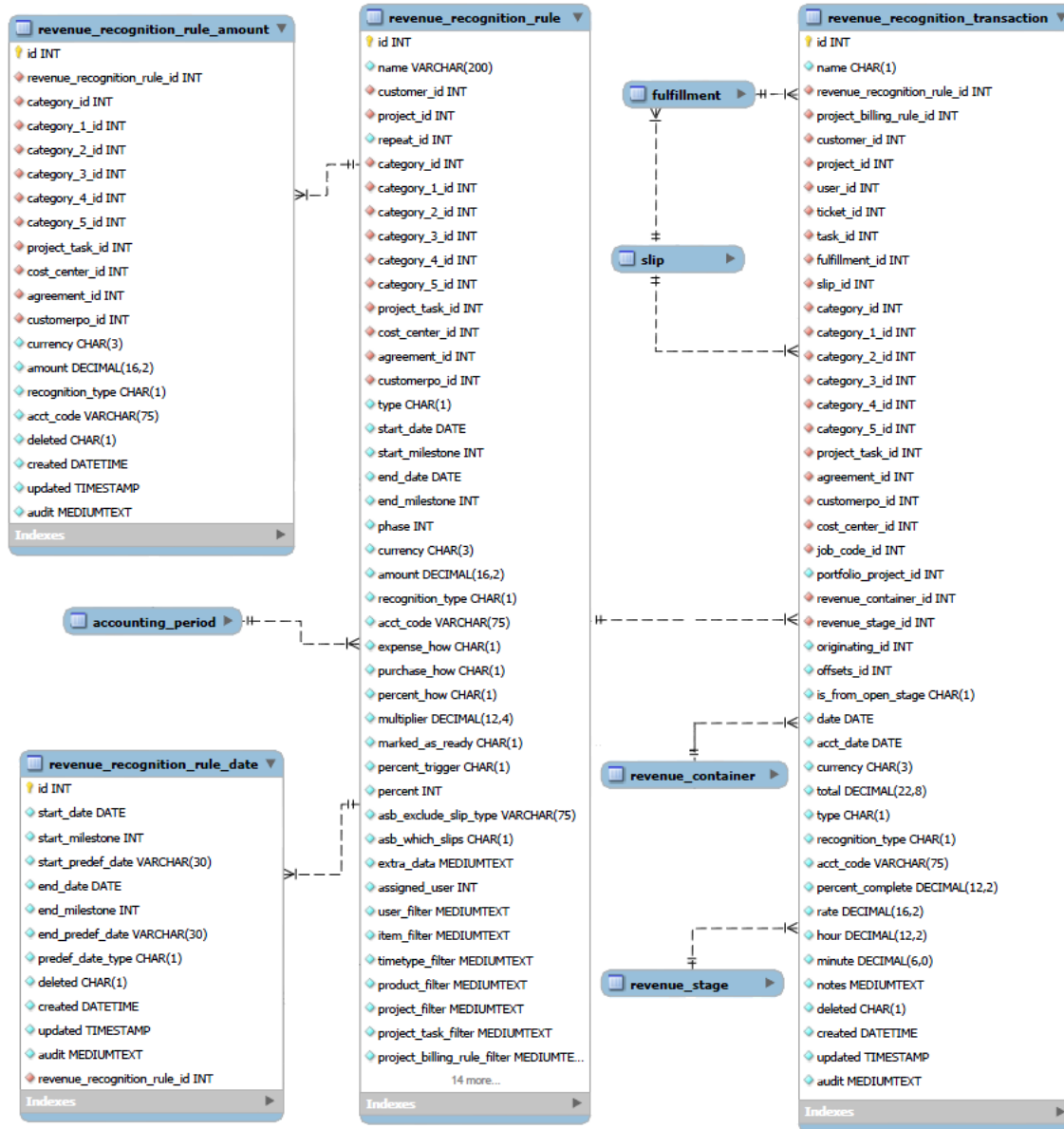
Revenue Container



Note: Links to the data dictionary provided in this guide use the generic OpenAir domain www.openair.com. In some instances, you may need to replace the generic domain with your account specific domain in the link URLs to access the OpenAir data dictionary. E.g. to view the data dictionary description of the Project table on Production, use:
https://<companyID>.app.openair.com/database/single_user.html#project

Data Dictionary	Related Diagrams
revenue_container, revenue_container_summary, revenue_stage	Approval Process, Revenue Recognition

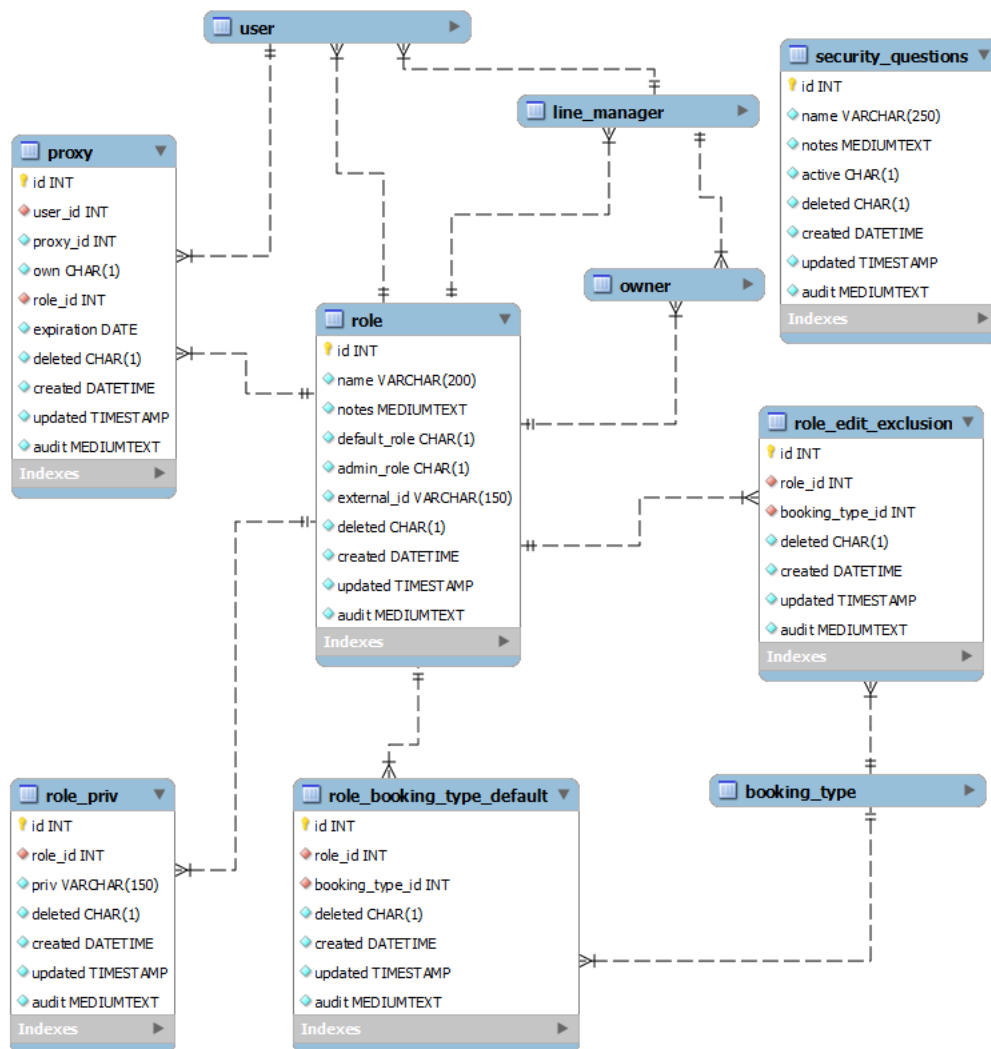
Revenue Recognition



Note: Links to the data dictionary provided in this guide use the generic OpenAir domain `www.openair.com`. In some instances, you may need to replace the generic domain with your account specific domain in the link URLs to access the OpenAir data dictionary. E.g. to view the data dictionary description of the Project table on Production, use:
https://<companyID>.app.openair.com/database/single_user.html#project

Data Dictionary	Related Diagrams
revenue_recognition_rule, revenue_recognition_rule_amount, revenue_recognition_rule_date, revenue_recognition_transaction	Accounting Period, Cost, Revenue Container

Role

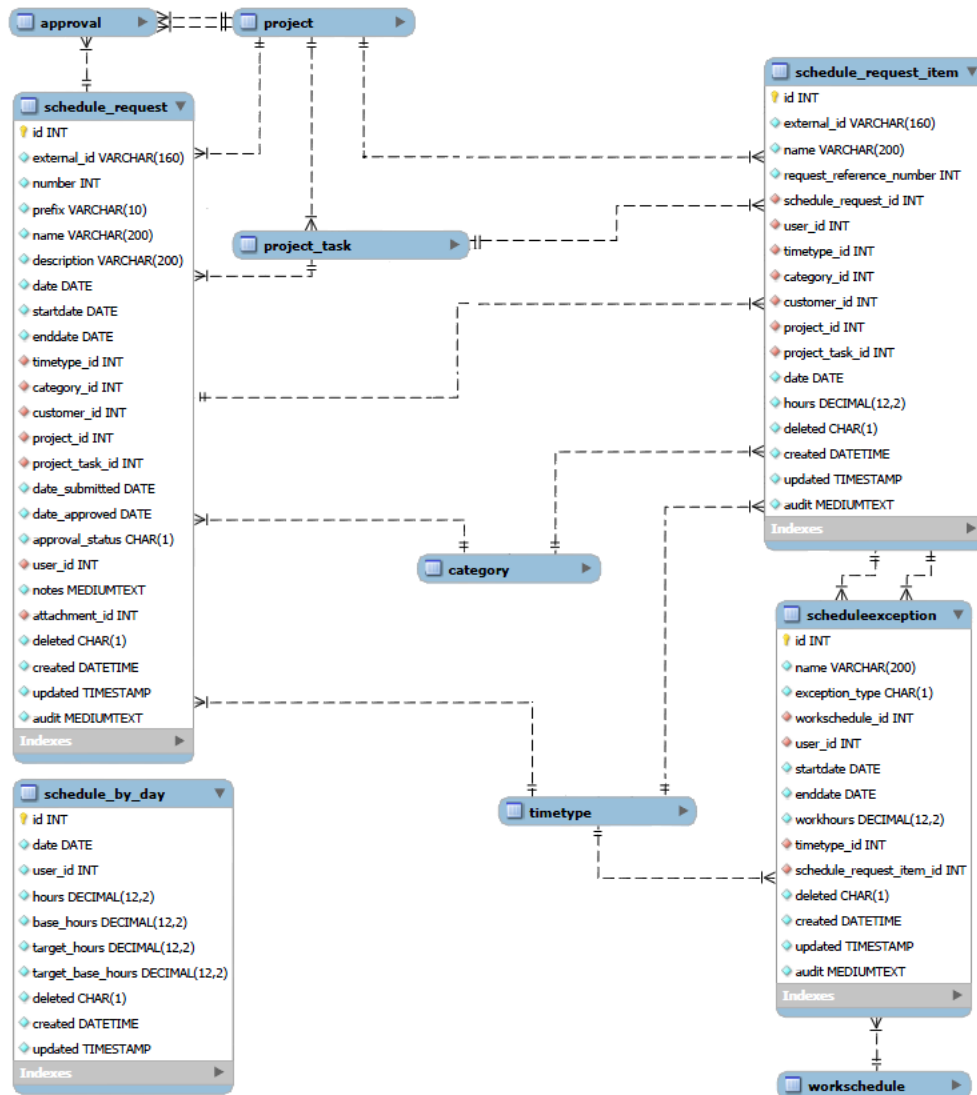


Note: Links to the data dictionary provided in this guide use the generic OpenAir domain www.openair.com. In some instances, you may need to replace the generic domain with your account specific domain in the link URLs to access the OpenAir data dictionary. E.g. to view the data dictionary description of the Project table on Production, use:

https://<companyID>.app.openair.com/database/single_user.html#project

Data Dictionary	Related Diagrams
proxy, role, role_booking_type_default, role_edit_exclusion, role_priv, security_questions	

Schedule

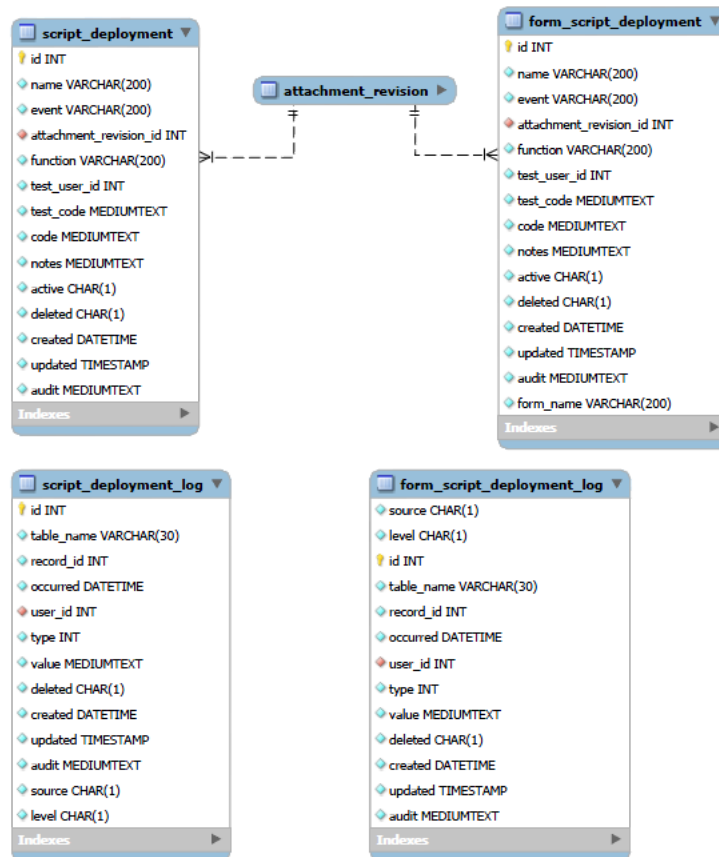


Note: Links to the data dictionary provided in this guide use the generic OpenAir domain www.openair.com. In some instances, you may need to replace the generic domain with your account specific domain in the link URLs to access the OpenAir data dictionary. E.g. to view the data dictionary description of the Project table on Production, use:

https://<companyID>.app.openair.com/database/single_user.html#project

Data Dictionary	Related Diagrams
schedule_by_day , schedule_request , schedule_request_item , scheduleexception	Approval Process , Category , Project , Project Task , Time

Script

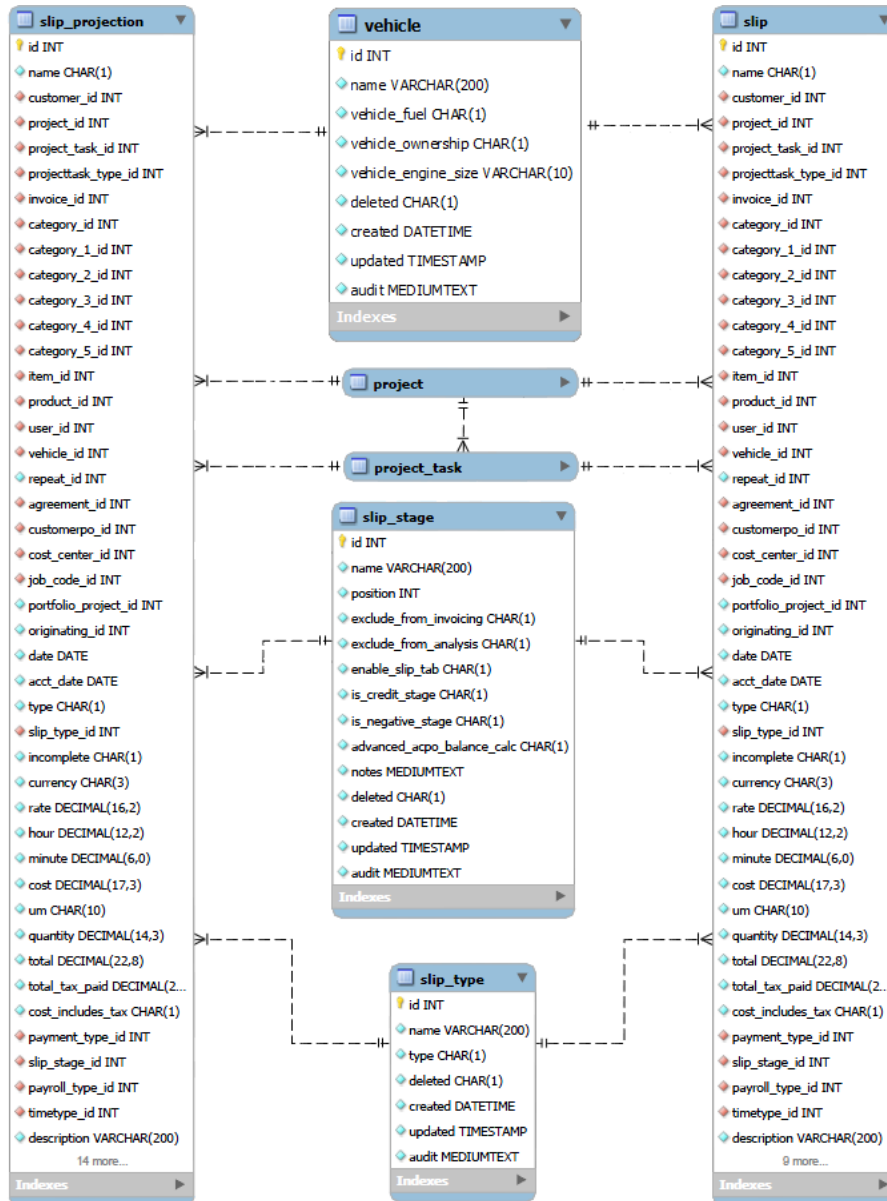


Note: Links to the data dictionary provided in this guide use the generic OpenAir domain www.openair.com. In some instances, you may need to replace the generic domain with your account specific domain in the link URLs to access the OpenAir data dictionary. E.g. to view the data dictionary description of the Project table on Production, use:

https://<companyID>.app.openair.com/database/single_user.html#project

Data Dictionary	Related Diagrams
form_script_deployment , form_script_deployment_log , script_deployment , script_deployment_log	Attachment , User

Slip

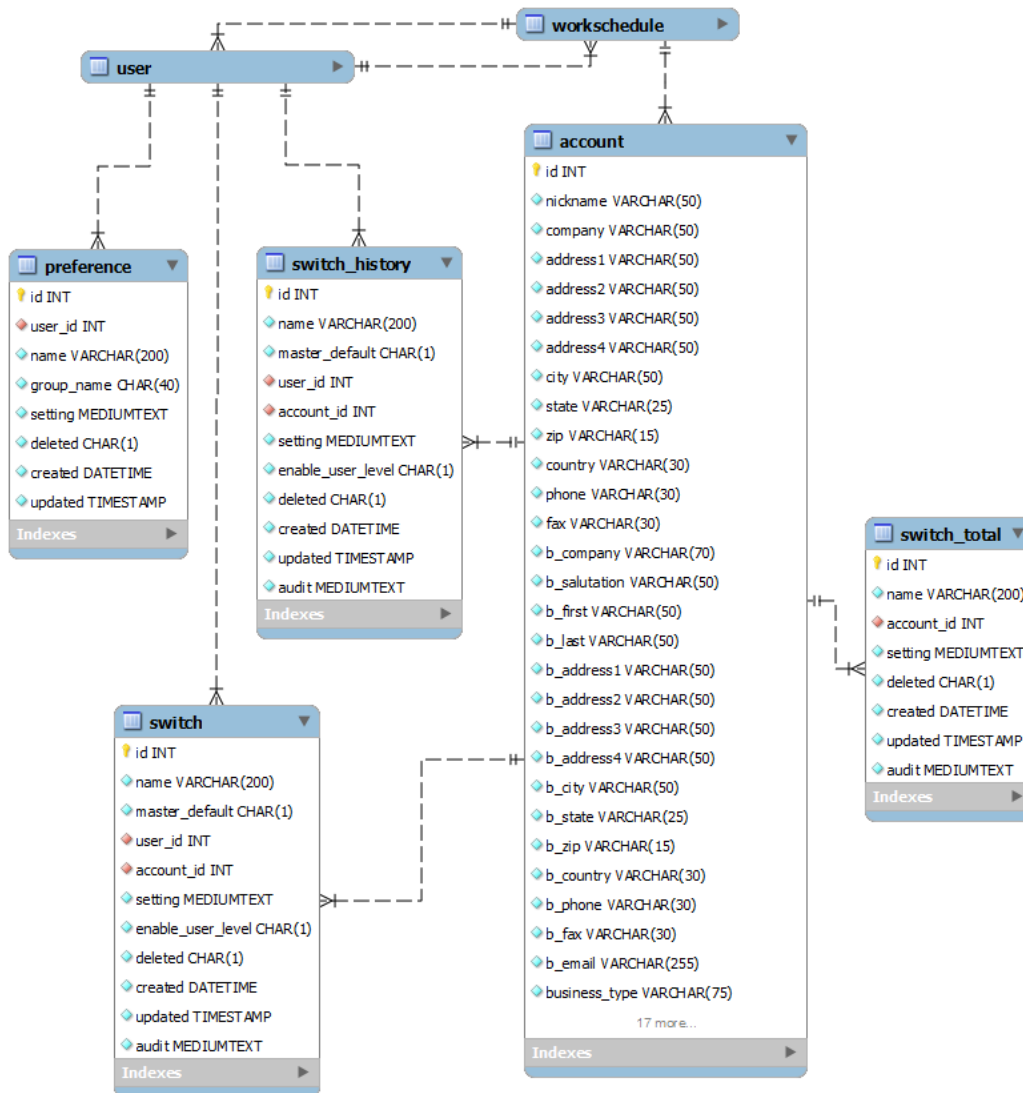


Note: Links to the data dictionary provided in this guide use the generic OpenAir domain `www.openair.com`. In some instances, you may need to replace the generic domain with your account specific domain in the link URLs to access the OpenAir data dictionary. E.g. to view the data dictionary description of the Project table on Production, use:

`https://<companyID>.app.openair.com/database/single_user.html#project`

Data Dictionary	Related Diagrams
slip, slip_projection, slip_stage, slip_type, vehicle	Product, Proposal, Revenue Recognition, Tax

Switch

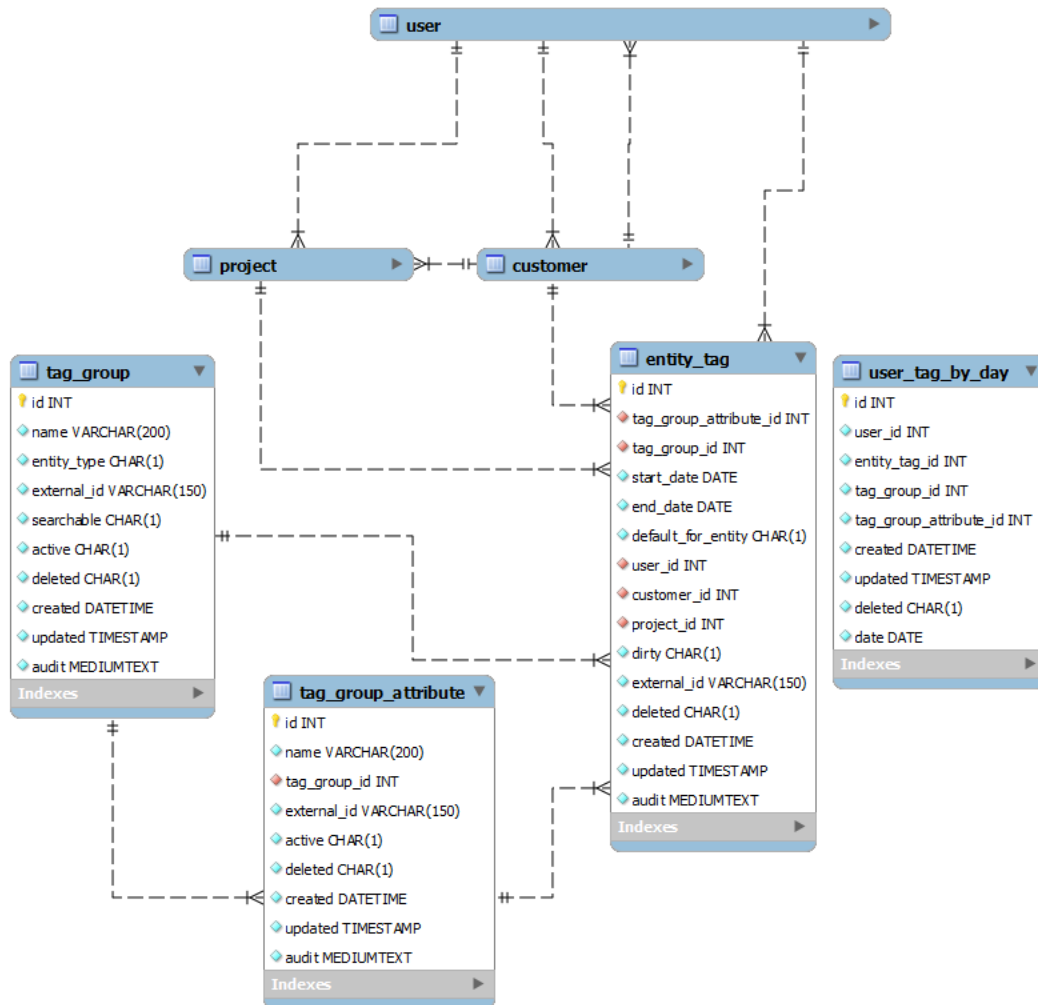


Note: Links to the data dictionary provided in this guide use the generic OpenAir domain www.openair.com. In some instances, you may need to replace the generic domain with your account specific domain in the link URLs to access the OpenAir data dictionary. E.g. to view the data dictionary description of the Project table on Production, use:

https://<companyID>.app.openair.com/database/single_user.html#project

Data Dictionary	Related Diagrams
switch , switch_history , attachment_revision , switch_total	

Tag

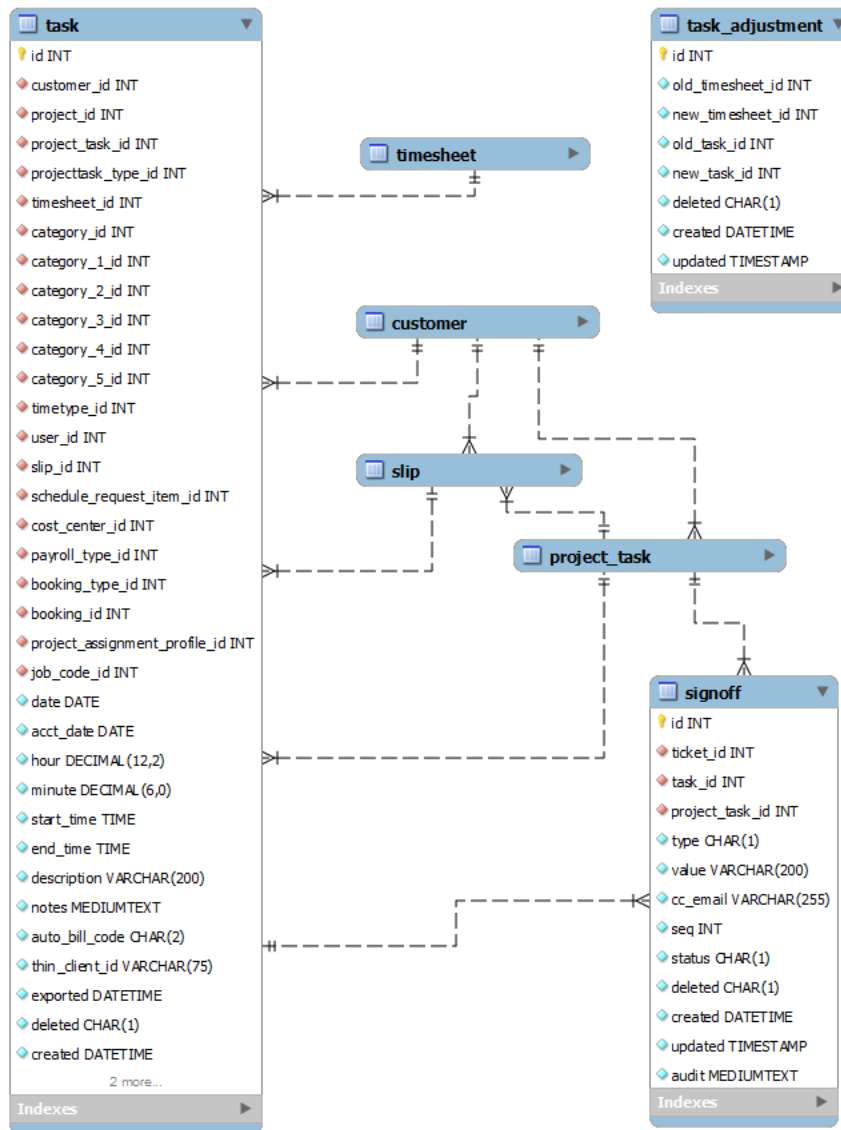


Note: Links to the data dictionary provided in this guide use the generic OpenAir domain www.openair.com. In some instances, you may need to replace the generic domain with your account specific domain in the link URLs to access the OpenAir data dictionary. E.g. to view the data dictionary description of the Project table on Production, use:

https://<companyID>.app.openair.com/database/single_user.html#project

Data Dictionary	Related Diagrams
entity_tag , tag_group , tag_group_attribute , user_tag_by_day	

Task

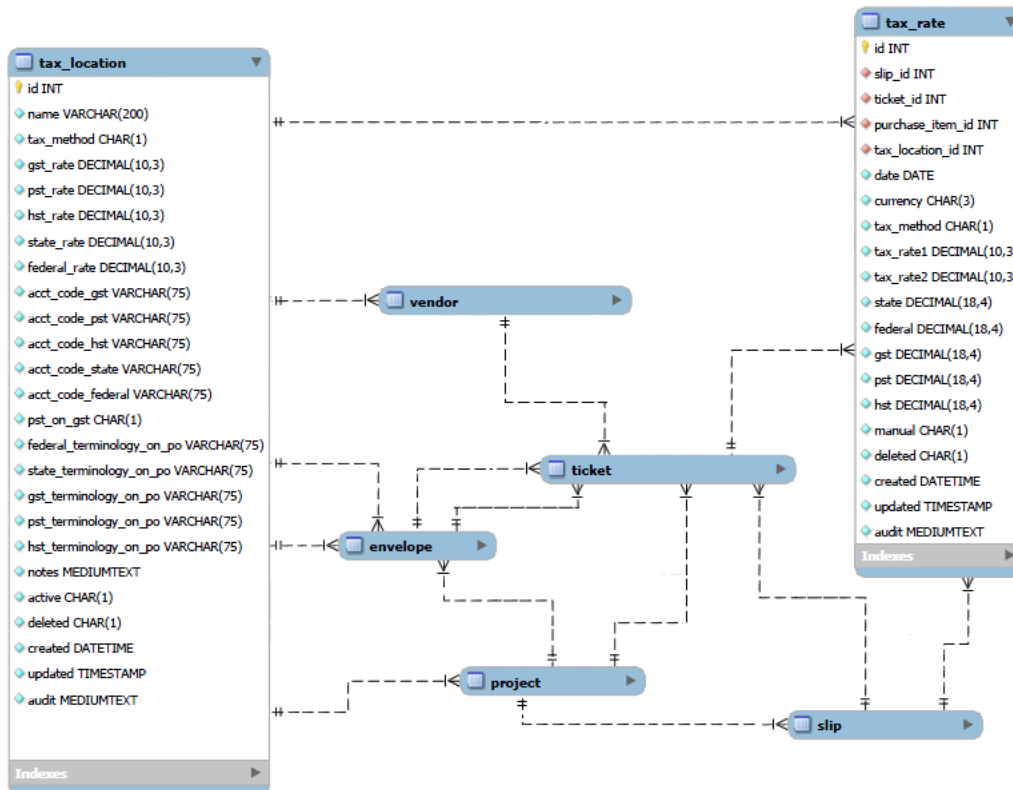


Note: Links to the data dictionary provided in this guide use the generic OpenAir domain www.openair.com. In some instances, you may need to replace the generic domain with your account specific domain in the link URLs to access the OpenAir data dictionary. E.g. to view the data dictionary description of the Project table on Production, use:

https://<companyID>.app.openair.com/database/single_user.html#project

Data Dictionary	Related Diagrams
task, task_adjustment	Billing, Category, Customer, Project, Project Task, Revenue Recognition, Schedule, Time, User

Tax

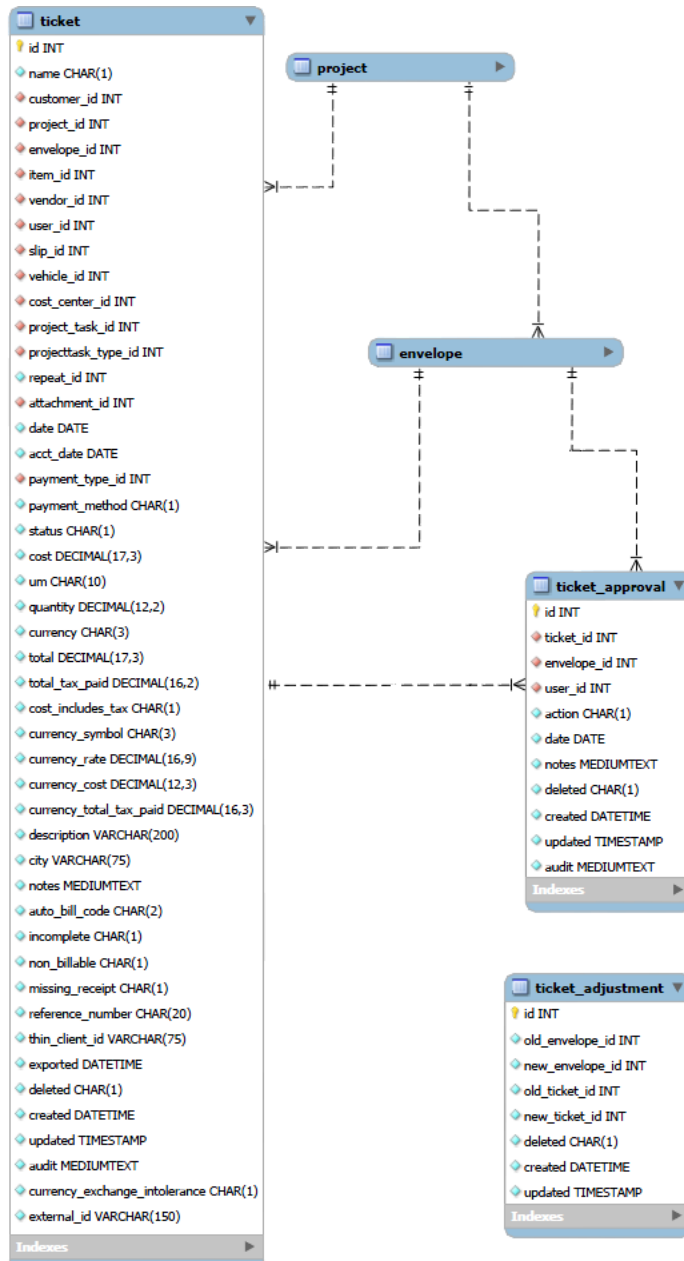


Note: Links to the data dictionary provided in this guide use the generic OpenAir domain www.openair.com. In some instances, you may need to replace the generic domain with your account specific domain in the link URLs to access the OpenAir data dictionary. E.g. to view the data dictionary description of the Project table on Production, use:

https://<companyID>.app.openair.com/database/single_user.html#project

Data Dictionary	Related Diagrams
tax_location , tax_rate , signoff	Product , Purchase Item

Ticket

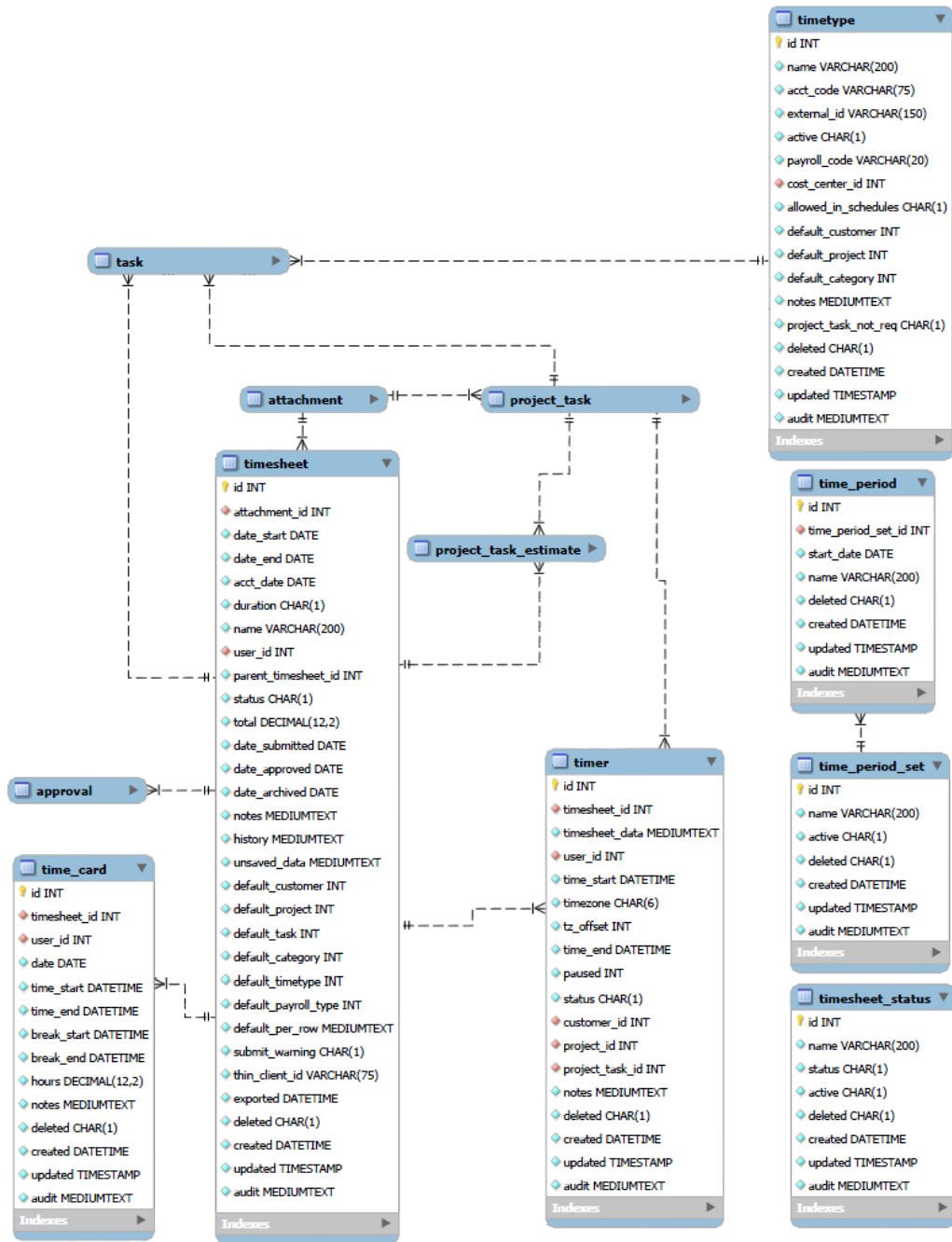


Note: Links to the data dictionary provided in this guide use the generic OpenAir domain www.openair.com. In some instances, you may need to replace the generic domain with your account specific domain in the link URLs to access the OpenAir data dictionary. E.g. to view the data dictionary description of the Project table on Production, use:

https://<companyID>.app.openair.com/database/single_user.html#project

Data Dictionary	Related Diagrams
ticket , ticket_adjustment , ticket_approval	Authorization , Product , Tax

Time

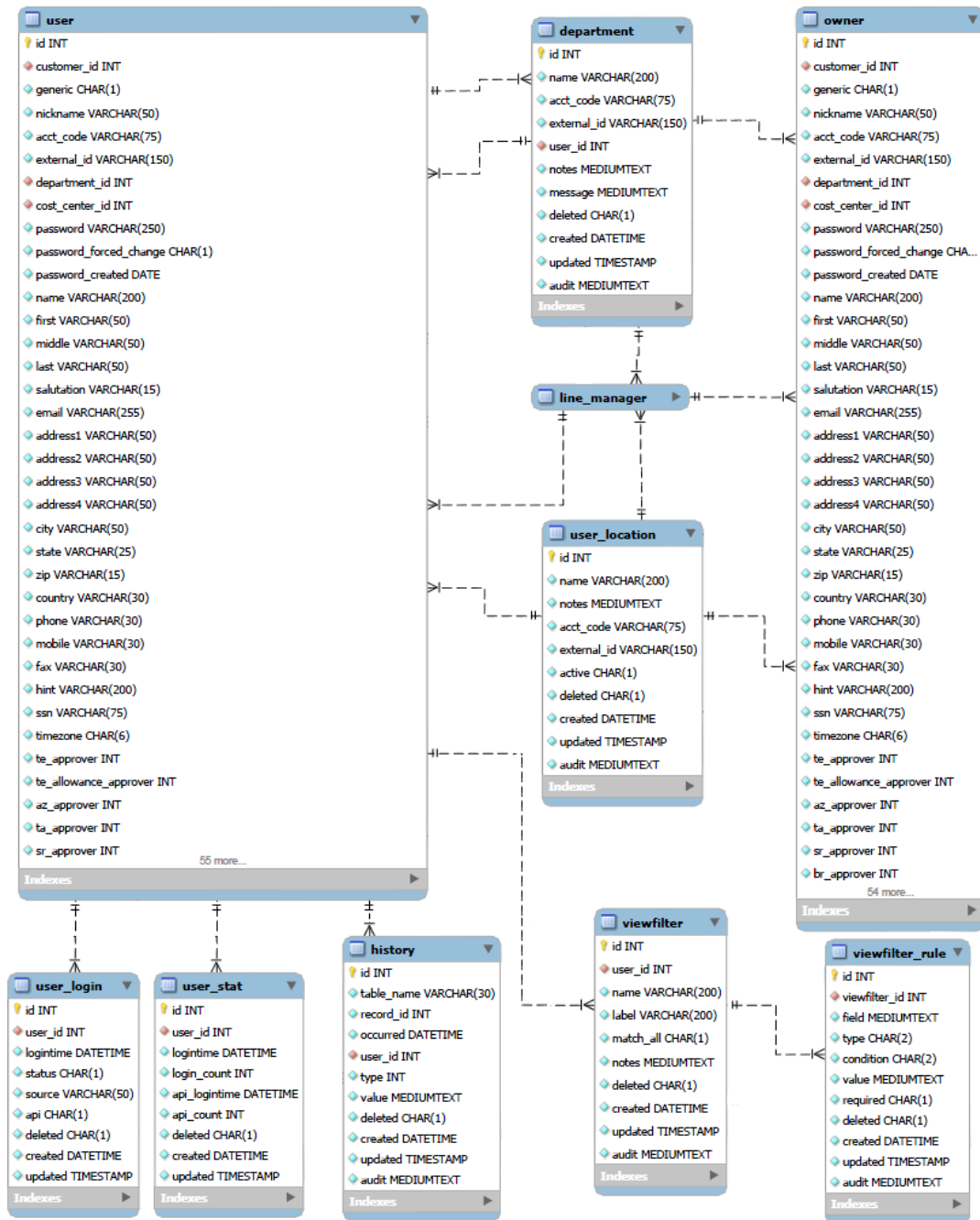


Note: Links to the data dictionary provided in this guide use the generic OpenAir domain `www.openair.com`. In some instances, you may need to replace the generic domain with your account specific domain in the link URLs to access the OpenAir data dictionary. E.g. to view the data dictionary description of the Project table on Production, use:

`https://<companyID>.app.openair.com/database/single_user.html#project`

Data Dictionary	Related Diagrams
time_card , time_period , time_period_set , timesheet , timesheet_status , timetype	Approval Process , User

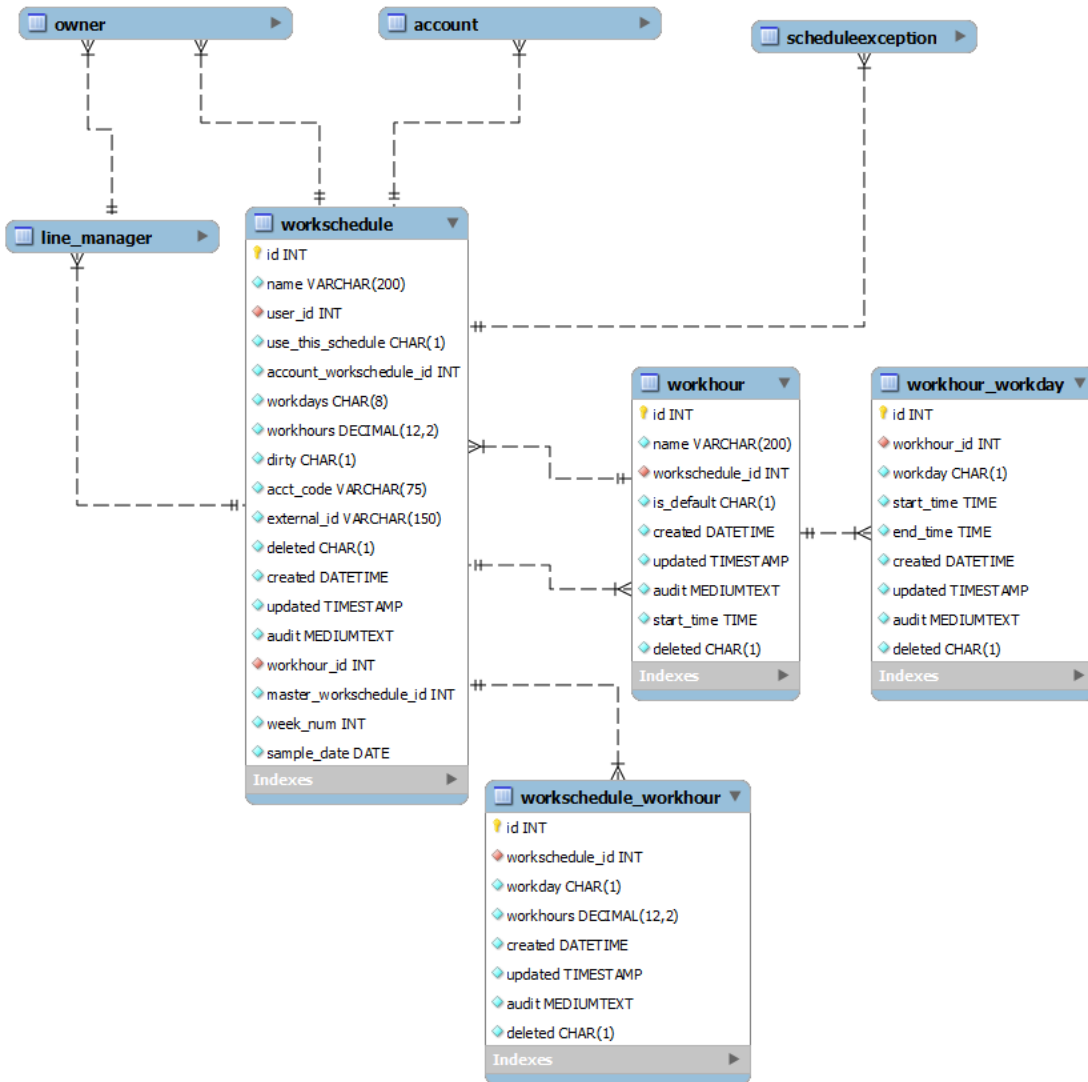
User



Note: Links to the data dictionary provided in this guide use the generic OpenAir domain `www.openair.com`. In some instances, you may need to replace the generic domain with your account specific domain in the link URLs to access the OpenAir data dictionary. E.g. to view the data dictionary description of the Project table on Production, use:
https://<companyID>.app.openair.com/database/single_user.html#project

Data Dictionary	Related Diagrams
department , history , owner , user , user_location , user_login , user_stat , viewfilter , viewfilter_rule	Switch

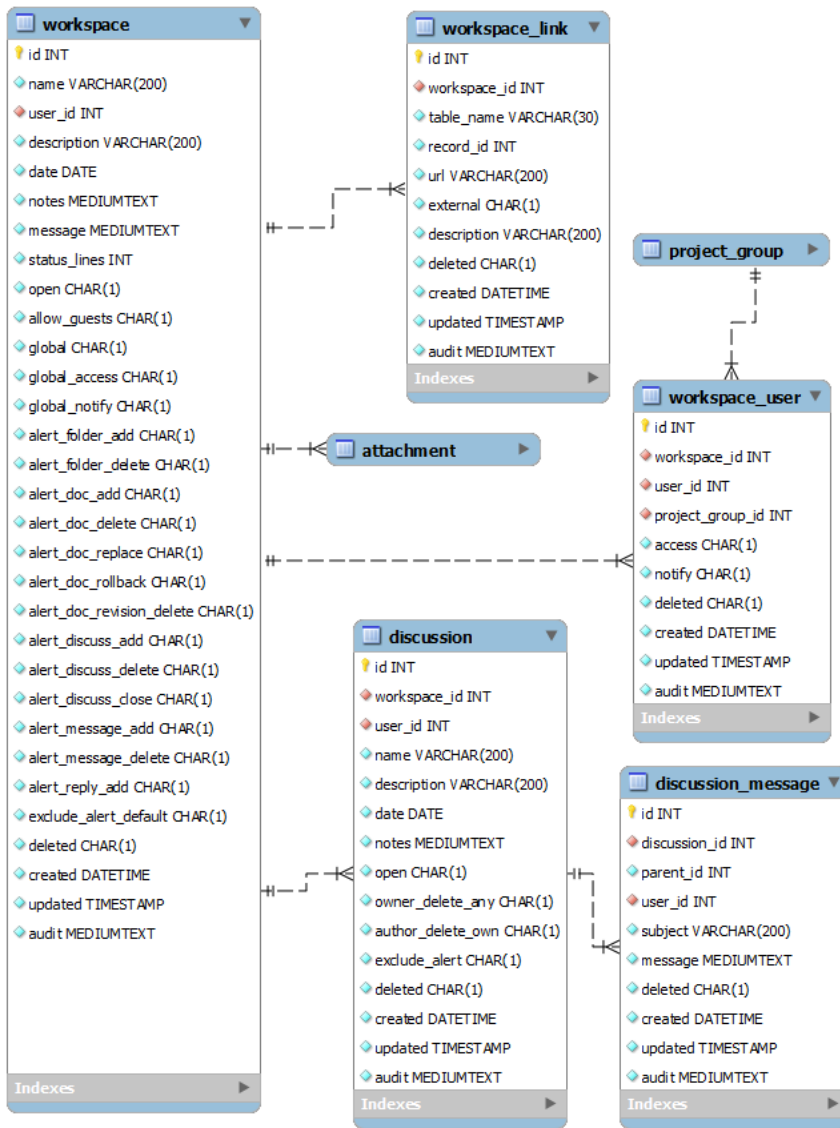
Workhour



Note: Links to the data dictionary provided in this guide use the generic OpenAir domain `www.openair.com`. In some instances, you may need to replace the generic domain with your account specific domain in the link URLs to access the OpenAir data dictionary. E.g. to view the data dictionary description of the Project table on Production, use:
https://<companyID>.app.openair.com/database/single_user.html#project

Data Dictionary	Related Diagrams
workhour , workhour_workday , workschedule , workschedule_workhour	Switch

Workspace



Note: Links to the data dictionary provided in this guide use the generic OpenAir domain `www.openair.com`. In some instances, you may need to replace the generic domain with your account specific domain in the link URLs to access the OpenAir data dictionary. E.g. to view the data dictionary description of the Project table on Production, use:

`https://<companyID>.app.openair.com/database/single_user.html#project`

Data Dictionary	Related Diagrams
discussion , discussion_message , workspace , workspace_link , workspace_user	

Index

Note: Links to the data dictionary provided in this guide use the generic OpenAir domain `www.openair.com`. In some instances, you may need to replace the generic domain with your account specific domain in the link URLs to access the OpenAir data dictionary. E.g. to view the data dictionary description of the Project table on Production, use:

`https://<companyID>.app.openair.com/database/single_user.html#project`

Data Dictionary	Diagram
account	Switch
accounting_period	Accounting Period
accounts_payable	Purchase Order
actual_cost	Cost
address	Proposal
adhoc_report	Reporting
agreement	Agreement
agreement_to_project	Agreement
alert	Item
approval	Approval Process
approval_confirmation_status	Miscellaneous
approvalprocess	Approval Process
approvalprocess_rule	Approval Process
assign_by_day	Miscellaneous
assignment_profile	Resource Profile
attachment	Attachment
attachment_category	Attachment
attachment_revision	Attachment
attachment_text	Attachment
attribute	Resource Profile
attribute_set	Resource Profile
authorization	Authorization
authorization_item	Authorization
auto_bill	Billing
baseline_by_day	Miscellaneous
billing_action	Billing

Data Dictionary	Diagram
billing_split	Billing
booking	Booking
booking_baseline	Booking
booking_by_day	Booking
booking_request	Booking
booking_type	Booking
budget	Budget
budget_activity	Budget
budget_allocation	Budget
budget_category	Budget
builtin_crosstab	Reporting
builtin_detail	Reporting
bulk_payment	Payment
bus_type	Customer
carrier	Purchase Order
category	Category
category_1	Category
category_2	Category
category_3	Category
category_4	Category
category_5	Category
cc_rate	Category
company_size	Customer
contact	Proposal
cost_category	Cost
cost_center	Cost
cost_center_used	Cost
cost_type	Cost
currency	Payment
current_period	Accounting Period
cust_field	Custom Field
custom_detail	Custom Field

Data Dictionary	Diagram
customer	Customer
customer_location	Customer
customerpo	Customer
customerpo_to_project	Customer
deal	Deal
deal_booking_request	Deal
deal_contact	Deal
deal_schedule	Deal
deal_stage	Deal
department	User
dependent_custom_field	Custom Field
discussion	Workspace
discussion_message	Workspace
email_template	Miscellaneous
entity_report	Reporting
entity_tag	Tag
envelope	Envelope
estimate	Estimate
estimate_adjustment	Estimate
estimate_expense	Estimate
estimate_labor	Estimate
estimate_markup	Estimate
estimate_phase	Estimate
event	Proposal
expense_policy	Expense Policy
expense_policy_item	Expense Policy
extended_field	Custom Field
filter	Filter
filter_set	Filter
filter_user	Filter
fob_location	Purchase Order
folder	Project Group

Data Dictionary	Diagram
folder_content	Project Group
forex	Payment
form_script_deployment	Script
form_script_deployment_log	Script
fulfillment	Request Item
hear_about	Customer
hierarchy	Resource Request
hierarchy_node	Resource Request
history	User
import_export	Miscellaneous
import_export_state	Miscellaneous
invoice	Invoice
invoice_layout	Invoice
invoice_tax_rates	Invoice
issue	Issue
issue_category	Issue
issue_severity	Issue
issue_source	Issue
issue_stage	Issue
issue_status	Issue
item	Item
item_to_user_location	Item
item_history	Item
job_code	Job Rate
job_code_history	Job Rate
job_code_rate_by_task	Job Rate
job_code_used	Job Rate
leave_accrual_rule	Leave Accrual
leave_accrual_rule_to_user	Leave Accrual
leave_accrual_transaction	Leave Accrual
line_manager	User
loaded_cost	Cost

Data Dictionary	Diagram
manufacturer	Product
merchant	Payment
newsfeed	News Feed
newsfeed_message	News Feed
ns_config	NetSuite Connector
ns_export_queue	NetSuite Connector
ns_last_import	NetSuite Connector
ns_mapping	NetSuite Connector
ns_queue	NetSuite Connector
ns_realtime	NetSuite Connector
ns_run	NetSuite Connector
ns_switch	NetSuite Connector
ns_tab	NetSuite Connector
ns_workflow	NetSuite Connector
owner	User
payment	Payment
payment_terms	Payment
payment_type	Payment
payroll_type	Payment
pending_booking	Booking
preference	Switch
product	Product
project	Project
project_assign	Project
project_assignment_profile	Resource Profile
project_assignment_profile_filter	Resource Profile
project_baseline	Project
project_billing_rule	Billing
project_billing_transaction	Billing
project_booking_grid	Booking
project_group	Project Group
project_group_assign	Project Group

Data Dictionary	Diagram
project_location	Project
project_mutex	Project
project_mutex_override	Project
project_pricing	Project Pricing
project_pricing_approval	Project Pricing
project_pricing_estimate	Project Pricing
project_pricing_split	Project Pricing
project_pricing_type	Project Pricing
project_stage	Project
project_task	Project Task
project_task_assign	Project Task
project_task_baseline	Project Task
project_task_estimate	Project Task
project_task_split	Project Task
project_transfer	Project
projecttask_type	Project Task
proposal	Proposal
proposal_block	Proposal
proxy	Role
purchase_item	Purchase Item
purchaseorder	Purchase Order
purchaser	Purchase Order
purchaserequest	Request Item
queue	Item
rate_card	Job Rate
rate_card_item	Job Rate
receiving	Purchase Order
registry_entry	Miscellaneous
reimbursement	Envelope
repeat	Miscellaneous
report	Reporting
request_item	Request Item

Data Dictionary	Diagram
resource_request	Resource Request
resource_request_queue	Resource Request
resourceprofile	Resource Profile
resourceprofile_type	Resource Profile
resourcesearch	Resource Request
revenue_container	Revenue Container
revenue_container_summary	Revenue Container
revenue_projection	Revenue Recognition
revenue_recognition_rule	Revenue Recognition
revenue_recognition_rule_amount	Revenue Recognition
revenue_recognition_rule_date	Revenue Recognition
revenue_recognition_transaction	Revenue Recognition
revenue_stage	Revenue Container
role	Role
role_booking_type_default	Role
role_edit_exclusion	Role
role_priv	Role
schedule_by_day	Schedule
schedule_request	Schedule
schedule_request_item	Schedule
scheduleexception	Schedule
script_deployment	Script
script_deployment_log	Script
security_questions	Role
shared_folder	Project Group
shared_report	Reporting
shipping_terms	Purchase Order
short_url	Miscellaneous
signer	Project
signoff	Task
slip	Slip
slip_projection	Slip

Data Dictionary	Diagram
slip_stage	Slip
slip_type	Slip
snapshot	Miscellaneous
switch	Switch
switch_history	Switch
switch_total	Switch
tag_group	Tag
tag_group_attribute	Tag
target_utilization	Miscellaneous
task	Task
task_adjustment	Task
tax_location	Tax
tax_rate	Tax
template	Proposal
territory	Deal
ticket	Ticket
ticket_adjustment	Ticket
ticket_approval	Ticket
time_card	Time
time_period	Time
time_period_set	Time
timer	Time
timesheet	Time
timesheet_status	Time
timetype	Time
todo	Proposal
up_rate	Job Rate
user	User
user_location	User
user_login	User
user_stat	User
user_tag_by_day	Tag

Data Dictionary	Diagram
valuelist_custom_field	Custom Field
vehicle	Slip
vendor	Product
viewfilter	User
viewfilter_rule	User
workhour	Workhour
workhour_workday	Workhour
workschedule	Workhour
workschedule_workhour	Workhour
workspace	Workspace
workspace_link	Workspace
workspace_user	Workspace