

BOBCAT COMPANY PRICE PAGES
NA LOADERS – SKID-STEER



Please note the following when using Bobcat Price Pages:

- All prices are shown in U.S. dollars.
- Check BobcatNET Pricing Homepage for current Canadian exchange rate.
- To ensure having the correct Part Number for a Dealer Installed Accessory, obtain the loader model and serial number and check with Dealer Parts Department.
- For the most current Dealer Installed Accessories pricing, reference BobQuote or Dealer Parts Department.
- Prices and specifications are subject to change without notice.

THE FOLLOWING UPDATES HAVE BEEN MADE TO THIS DOCUMENT:

Date	Description of Change
1/1/2020	New year pricing
4/1/2019	New Packaging
7/15/2019	Revised S70 specifications & P/N
7/6/2020	Revised S70 SLP to include seat

*Certain Specification(s) are based on engineering calculations and are not actual measurements.

*Specification(s) are provided for comparison purposes only and are subject to change without notice.

*Specifications(s) for your individual Bobcat equipment will vary based on normal variations in desing, manufacturing, operating conditions, and other factors.

S70 (Tier 4)
Bobcat Skid-Steer Loader



Standard Equipment

- | | |
|---|--|
| 23.5 HP Tier 4 Diesel Engine
Auxiliary Hydraulics
Backup Alarm
Bob-Tach Attachment System
Bobcat Interlock Control System (BICS TM)
Bob-Tach Attachment System
Glow Plugs (Automatically Activated)
Horn
Instrumentation: Hourmeter, Engine Temperature Gauge,
Fuel Gauge (On Tank), Voltmeter and Warning Lights
Lift Arm Support
Lift Path: Radius | Lights: Front & Rear
Operator Cab
- Includes: Suspension Cushion Seat, Parking Brake,
Rear Window, Seat Bar, Seat Belt
- Roll Over Protective Structure (ROPS) meets
SAE-J1040 & ISO 3471
- Falling Objects Protective Structure (FOPS) meets
SAE-J1043 & ISO 3449, Level I
Spark Arrestor Muffler
Tires, 23 x 5.70-12, 4 PR, Bobcat Standard Duty
Warranty: 2 years, or 2000 hours whichever occurs first |
|---|--|

Quick Specs

	<u>S70</u>
Rated Operating Capacity	760 lbs.
Engine Model	D1005-E4B
Engine Fuel	Diesel
Engine Cooling	Liquid
Horsepower	23.5
Hydraulic Pump Capacity – Standard Flow	9.8 GPM
Travel Speed	6.3 MPH
Operating Weight	2,892 lbs.
Shipping Weight	2,545 lbs.
Cab Height	71.4"
Width (w/out Attachment)	35.5"
Length (w/out Attachment)	75.8"
Wheelbase	28.4"
Reach at Maximum Height	15.8"
Height to Hinge Pin	94.5"

S70 (Tier 4)
Bobcat Skid-Steer Loader

Part Number	Description	Skid-Steer Loader	SLP In US \$
-------------	-------------	-------------------	--------------

M4003	S70 Skid-Steer Loader (Equipped with T4 Engine)		\$23,120
-------	---	--	----------

Part Number	Description	Factory Installed Options	SLP In US \$
-------------	-------------	---------------------------	--------------

M4003-R02-C02	Cab Enclosure with Heater and Sound Reduction..... Includes Heater, Front Door with Wiper, Top and Side Sliding Windows, Rubber Floor Covers, Side Instrument Panel and Sound Reducing Foam Insulation.		\$1,838
---------------	---	--	---------

M4003-R09-C02	23 x 8.50-12, 6 PR, Heavy Duty Tires..... Set of four tires in place of base equipment. Loader width 44"		\$194
---------------	---	--	-------

Part Number	Description	Dealer Installed Accessories - Order From Parts	SLP In US \$
-------------	-------------	---	--------------

Part numbers for kits in this section are current as of May 2015 and pertain to current loader models as of that date. To ensure having the correct Part Number for a Dealer Installed Accessory, obtain the loader model and serial number and check with Dealer Parts Department. For the most current Dealer Installed Accessories pricing, refer to BobQuote or Dealer Parts Department.

Cab Accessories

7375378	Cab Enclosure, Vinyl Cab enclosure includes vinyl coated nylon fabric with clear vinyl windows that provide visibility to the front, top, rear and sides of the loader. Est. Install time: 1 hr.		\$ _____
---------	---	--	----------

7375018	Door Kit Includes window wiper and washer. Side Instrument Panel is required; reference P/N 7154283 for detail. Est. Install time: 5 hrs.		\$ _____
---------	--	--	----------

7374940	Heater Kit Includes plumbing kit. Est. Install time: 2 hrs. to install heater and plumbing kit		\$ _____
---------	---	--	----------

6712972	Keyless Start Kit Est. Install time: 1.5 hrs.		\$ _____
---------	--	--	----------

S70 (Tier 4)
Bobcat Skid-Steer Loader

Part Number	Description	Dealer Installed Accessories - Order From Parts	SLP In US \$
-------------	-------------	---	--------------

Cab Accessories (continued)

7154283	Side Instrument Panel Kit Provides a side instrument panel that is used to supply the electrical power for various kits. Est. Install time: 1 hr.		\$ _____
6706993	Sliding Side Windows Kit..... Est. Install time: 3 hrs.		\$ _____
7111126	Top Window Kit..... Est. Install time: 0.75 hr.		\$ _____

Electrical Accessories

7374214	Attachment Control Kit For complete listing of Attachment Control Kits, P/N's and Descriptions – Refer to the Attachments Section of the Price Pages.		\$ _____
7374209	Four-Way Flasher / Turn Signal Kit..... Cab Accessory Harness or Cab Accessory Adapter Harness is required; Reference Cab Accessory Harness & Lower Interior Panels kit or Cab Accessory Adapter Harness for details. Est. Install time: 1 hr.		\$ _____
6708342	Rotating Beacon Light Kit Side Instrument Panel is required; reference P/N 7154283 for detail. Est. Install time: 0.75 hr.		\$ _____
6587526	Strobe Light Kit, Amber Est. Install time: 1 hr.		\$ _____

Engine Accessories

6680999	Catalytic Exhaust Purifier Est. Install time: 1 hr.		\$ _____
6720808	Engine Block Heater Est. Install time: 1 hr.		\$ _____
7348548	Rental Kit Monitors Temperature and Pressure (Engine Oil and Hydraulic Oil) Est. Install time: 2 hrs.		\$ _____

Hydraulic Accessories

7375012	Hydraulic Bucket Positioning Kit Bucket Positioning helps the operator keep the same tilt position of the load during lifting. Includes on/off switch. Side Instrument Panel is required; reference P/N 7154283 for detail. Est. Install time: 2.5 hrs.		\$ _____
---------	--	--	----------

Lift Kits

7374929	Single Point Lift Kit Est. Install time: 3 hrs.		\$ _____
---------	--	--	----------

S70 (Tier 4)
Bobcat Skid-Steer Loader

Part Number Dealer Installed Accessories - Order From Parts SLP In US \$

Seats & Seat Belts

6703640	Seat Belt Kit, 3" Wide (Standard Seat)	\$ _____
	For use with Standard Seat only. Includes 3" lap belt. Est. Install time: 0.5 hr.	

Training Kits

6901726	Bobcat Loader Operator Training Kit	\$ _____
6900641	Bobcat Loader Service Training Kit	\$ _____
6904762	Bobcat Operator Safety DVD	\$ _____
	Includes all of the 10-minute operator safety videos in both English and Spanish.	

Other Accessories

7023550	Locking Fuel Cap	\$ _____
	Includes a Black Locking Fuel Cap which is keyed the same as the loader. Key is Not included. Additional locking fuel cap options are available through parts.	

S450 (Tier 4)
Bobcat Skid-Steer Loader



Standard Equipment

- | | |
|--|---|
| <p>49 HP Turbo Tier 4 Diesel Engine
 Auxiliary Hydraulics: Variable Flow
 Backup Alarm
 Bob-Tach Attachment System
 Bobcat Interlock Control System (BICS™)
 Bob-Tach Attachment System
 Engine/Hydraulic Systems Shutdown
 Glow Plugs (Automatically Activated)
 Horn
 Instrumentation: Engine Temperature & Fuel Gauges,
 Hourmeter, RPM and Warning Lights
 Lift Arm Support
 Lift Path: Radius</p> | <p>Lights, Front & Rear
 Operator Cab
 - Includes: Adjustable Cushion Seat, Top & Rear
 Windows, Parking Brake, Seat Bar & Seat Belt
 - Roll Over Protective Structure (ROPS) meets
 SAE-J1040 & ISO 3471
 - Falling Object Protective Structure (FOPS) meets
 SAE-J1043 & ISO 3449, Level I; (Level
 II is available through Bobcat Parts)
 Spark Arrestor Exhaust System
 Warranty: 2 years, or 2000 hours whichever occurs first</p> |
|--|---|

Quick Specs

	<u>S450</u>
Rated Operating Capacity.....	1,300 lbs.
Engine Model.....	1.8L Bobcat Engine
Engine Fuel.....	Diesel
Engine Cooling.....	Liquid
Horsepower.....	49
Hydraulic Pump Capacity – Standard Flow.....	16.7 GPM
Travel Speed.....	7.1 MPH
Travel Speed – 2 Speed with SJC.....	6.5/9.2 MPH
Operating Weight.....	5,027 lbs.
Shipping Weight.....	4,520 lbs.
Cab Height.....	77.8"
Width (w/out Attachment).....	58.6"
Length (w/out Attachment).....	98.4"
Wheelbase.....	35.4"
Reach at Maximum Height.....	20.8"
Height to Hinge Pin.....	109.5"

S450 (Tier 4)
Bobcat Skid-Steer Loader

Part Number	Description	SLP In US \$
--------------------	--------------------	---------------------

M0201	S450 Skid-Steer Loader (Equipped with Tier 4 Engine).....	\$35,380
-------	---	----------

Part Number	Description	SLP In US \$
--------------------	--------------------	---------------------

M__-P01-A51	A51 Option Package.....	\$5,369
	Enclosed Cab with AC/Heat Suspension Seat Cab Accessories Package* Power Bob-Tach	

Part Number	Description	SLP In US \$
--------------------	--------------------	---------------------

M__-P01-H51	H51 Option Package.....	\$3,798
	Enclosed Cab with Heat Suspension Seat Cab Accessories Package* Power Bob-Tach	

Part Number	Description	SLP In US \$
--------------------	--------------------	---------------------

M__-P01-O31	O31 Option Package.....	\$957
	Suspension Seat Cab Accessories Package*	

*Cab Accessories Package: Deluxe Headliner with Dome Light, Cab Accessory Harness, Power Port, Lower Interior Panels with Storage Compartments and Cup Holder.

Part Number	Description	SLP In US \$
--------------------	--------------------	---------------------

Controls

M__-R01-C04	Selectable Joystick Control (SJC) with 2 Speed.....	\$2,013
	Features include: 2 Speed Travel, Selectable patterns (ISO or H-Pattern), Auto Idle, Horsepower Management, Speed Management, Drive Response, Drift Compensation and Foot Pedal for Engine Speed Control. Must order the A51 or O51 Cab Package. Not allowed with H51 Package.	

S450 (Tier 4)
Bobcat Skid-Steer Loader

Part Number	Dealer Installed Accessories - Order From Parts Description	SLP In US \$
--------------------	--	---------------------

Part numbers for kits in this section are current as of May 2015 and pertain to current loader models as of that date. To ensure having the correct Part Number for a Dealer Installed Accessory, obtain the loader model and serial number and check with Dealer Parts Department. For the most current Dealer Installed Accessories pricing, refer to BobQuote or Dealer Parts Department.

Cab Accessories - Enclosures, Doors, Windows

7128393	Cab Enclosure Door Kit..... Cab Accessory Harness is required, see Cab Accessory Harness & Lower Interior Panels kit for details. Includes Front Door with Sensor Switch and Wiper/Washer. Must also order Side Windows Kit and Cab Seals Kit to completely enclose cab. Est. Install time: 3.5 hrs.	\$ _____
7186723	Fops Window Kit..... Est. Install time: 10 min.	\$ _____
7374214	Attachment Control Kit For complete listing of Attachment Control Kits, P/N's and Descriptions – Refer to the Attachments Section of the Price Pages.	\$ _____
7182335	Sliding Side Lexan Windows Kit..... Includes 2 Sliding Side Lexan Windows. Est. Install time: 1 hr.	\$ _____
7128342	Sliding Side Windows Kit..... Includes 2 Sliding Side Windows. Must also order Cab Enclosure Door Kit to completely enclose cab. Est. Install time: 1 hr.	\$ _____
7128395	Special Applications Polycarbonate Door Kit..... Provides added operator protection during some attachment applications. Includes ½" thick polycarbonate front door. Must order a Side Windows Kit, Cab Seals Kit and Special Applications Rear Window to completely enclose cab. Est. Install time: 3 hrs.	\$ _____
7214673	Special Applications Polycarbonate Rear Window Kit..... Provides added operator protection during some attachment applications. Includes ½" thick polycarbonate rear window. Must order a Side Windows Kit, Cab Seals Kit and Special Applications Front Door to completely enclose cab. Est. Install time: 0.5 hr.	\$ _____

Cab Accessories - Heat and Air Conditioning

7244628	Air Conditioning Kit..... Loader must be equipped with Cab Enclosure with Heater. Est. Install time:	\$ _____
7128484	Heater Kit..... Cab Accessory Harness is required, see Cab Accessory Harness & Lower Interior Panels kit for details. Must also order heater plumbing kit. Est. Install time: 5 hrs. to install heater and plumbing kit.	\$ _____
7244626	Heater Plumbing Kit..... Est. Install time: 5 hrs. to install heater and plumbing kit	\$ _____

Cab Accessories - Other

_____	Cab Accessory Harness & Lower Interior Panels Kit..... See Dealer Parts Department for the correct kit part number. This kit is needed for Base Cabs Only when field installing any of the following accessories; cab enclosure with heat or air conditioning, four-way flasher / turn signal kit, hydraulic bucket positioning, power Bob-Tach kit, rear wiper kit, rotating beacon kit, strobe light kit or radio. Includes Cab Accessory Harness and Lower Interior Panels. Need to order Deluxe Headliner Kit or Deluxe Heater/Air Conditioning Headliner Kit & Cup Holder Kit to finish interior. Est. Install time: 5 hrs.	\$ _____
7167395	Cup Holder Kit..... Lower Interior Panels are required, see Cab Accessory Harness & Lower Interior Panels kit for details. Includes side and front cup holder. Est. Install time: 1 hr.	\$ _____

S450 (Tier 4)
Bobcat Skid-Steer Loader

Part Number	Description	SLP In US \$
-------------	-------------	--------------

Cab Accessories - Other (Continued)

7227849	Cab Seals Kit..... Includes bottom of cab and foot pod area seals. Needed to completely enclose the cab. Est. Install time: 2.5 hrs.	\$ _____
7170782	Deluxe Cab Gas Spring Kit..... 3rd gas spring for enclosed cab. Est. Install time: 1 hr.	\$ _____
7156253	Deluxe Headliner Kit..... Includes headliner with light and rear corner cab trim. Est. Install time: 1 hr.	\$ _____
7174171	Deluxe Heater / Air Conditioning Headliner Kit..... Includes Headliner with interior light, air conditioning/heater vents and rear corner cab trim. Needed to upgrade non-AC/Heater cab to include AC/Heat. Est. Install time: 1 hr.	\$ _____
7196560	Forestry Wiper Kit..... Loader must be equipped with Forestry Door; Reference P/N 7174127 Forestry Door or 7230523 Forestry Applications Kit for detail. Est. Install time: 1 hr	\$ _____
7240148	Intermittent Wiper Kit..... Includes intermittent wiper switch, cover, harness and tie straps. Kit allows operator to adjust the speed of the wiper to match the operating conditions. Est. Install time: 1 hr.	\$ _____
7238900	HEPA Filter Kit..... Est. Install time: 0.5 hr.	\$ _____
7234899	Rear Window External Removal Kit..... Recommended for use with Loader Radio Remote Control kit. Est. Install time: 1 hr.	\$ _____
7225133	Rear Wiper Kit..... Cab Accessory Harness is required, see Cab Accessory Harness & Lower Interior Panels kit for details. Deluxe Headliner, Lower Interior Panels and Front Door with Wiper are also required. Wiper is activated by a switch on the rear wiper motor. Est. Install time: 4 hrs.	\$ _____
7172897	Reseal Plugs Kit..... Includes plugs to seal cab and frame after the removal of the following: FOPS Kit, Single Point Lift Kit, Four Point Lift Kit, and Backhoe Attachment. Est. Install time: 1 hr.	\$ _____
7172903	White Decal Kit (Cab Top)..... Applied to cab top to maintain a cooler temperature inside the operator's cab. Est. Install time: 0.5 hr.	\$ _____

Counterweight Kits

7204315	Counterweight Kit- Axle..... Includes axle weights and hardware. When installed on front axles: Increases down force on attachments but does not increase the Rated Operating Capacity (ROC) of the loader. When installed on rear axles: Provides additional Rated Operating Capacity (ROC), see operator's Manual for ROC increase. Est. Install time: 1.5 hrs.	\$ _____
---------	--	----------

Electrical Accessories

_____	Attachment Control Kit For complete listing of Attachment Control Kits, P/N's and Descriptions – Refer to the Attachments Section of the Price Pages.	\$ _____
7169103	Cab Accessory Adapter Harness..... For Loaders without Cab Accessory Harness. Needed for Strobe, Beacon and Four-Way Flasher. Est. Install time: 0.5 hr.	\$ _____
7128338	Four-Way Flasher / Turn Signal Kit..... Cab Accessory Harness or Cab Accessory Adapter Harness is required; Reference Cab Accessory Harness & Lower Interior Panels kit or Cab Accessory Adapter Harness for details. Est. Install time: 1 hr.	\$ _____

S450 (Tier 4)
Bobcat Skid-Steer Loader

Part Number	Dealer Installed Accessories - Order From Parts	SLP In US \$
-------------	---	--------------

Electrical Accessories (continued)

7129299	Rotating Beacon Kit..... Cab Accessory Harness or Cab Accessory Adapter Harness is required; Reference Cab Accessory Harness & Lower Interior Panels kit or Cab Accessory Adapter Harness for details. Est. Install time: 1 hr.	\$ _____
7129301	Strobe Light Kit, Amber..... Cab Accessory Harness or Cab Accessory Adapter Harness is required; Reference Cab Accessory Harness & Lower Interior Panels kit or Cab Accessory Adapter Harness for details. Est. Install time: 1 hr.	\$ _____

Engine Accessories

7237289	Engine Block Heater..... Est. Install time: 0.25 hrs.	\$ _____
---------	--	----------

Hydraulic Accessories

7254136	Hydraulic Bucket Positioning Kit..... Bucket Positioning helps the operator keep the same tilt position of the load during lifting. Cab Accessory Harness is required, see Cab Accessory Harness & Lower Interior Panels kit for details. Includes on/off switch. Est. Install time:	\$ _____
7249869	Rear Auxiliary Hydraulic Kit..... Provides a flow of 8.5 GPM. Est. Install time: 10 hrs.	\$ _____

Instrumentation

7213928	Deluxe Instrument Panel with Keyless Start..... Includes keyless start, feature lockouts, help screens, clock, job clock, system diagnostic capability and more. Est. Install time: 1 hr.	\$ _____
7213929	Keyless Start Panel Kit..... Allows operator to start the loader by entering a reprogrammable number code. Est. Install time: 1	\$ _____

Lift Kits

7241506	Four-Point Lift Kit..... Cannot be used on loaders equipped with Backhoe Mounting Kit. Est. Install time:	\$ _____
7241548	Single Point Lift Kit..... Est. Install time:	\$ _____

Loader Guard Kits

7251551	Cross Member Tube Line Shield Kit.....	\$ _____
7129293	FOPS Kit..... Additional shield assembly for cab top. Meets ISO 3449, Level II Requirements. Est. Install time: 1 hr.	\$ _____
7239159	Rear Work Lights Guard Kit..... Est. Install time: 0.5 hr.	\$ _____
7174129	Front Work Lights Guard Kit..... Est. Install time: 0.5 hr.	\$ _____
7248293	Tilt Cylinder Shield Kit..... Est. Install time: 0.5 hr.	\$ _____

S450 (Tier 4)
Bobcat Skid-Steer Loader

Part Number	Description	Dealer Installed Accessories - Order From Parts	SLP In US \$
-------------	-------------	---	--------------

Power Bob-Tach Attachment System Kits

7254137 Power Bob-Tach Kit and Plumbing Kit..... \$ _____
 Cab Accessory Harness is required, see Cab Accessory Harness & Lower Interior Panels kit for details. Must also order Power Bob-Tach Plumbing Kit. Est. Install time: to install Power Bob-Tach Kit and Plumbing Kit

Radio

6988435 Radio Kit..... \$ _____
 Includes weatherproof AM/FM/NOAA Weather Band Radio, Radio Mounting Bracket, Speakers, Antenna, and Installation Hardware. Works with MP3 or other portable music player. Cab Accessory Harness is required, see Cab Accessory Harness & Lower Interior Panels kit for details. Est. Install time: 3 hrs.

6676108 Radio Headphones..... \$ _____

Remote Control Kits

7185234 Loader Radio Remote Control Kit..... \$ _____
 Allows an operator to start/stop the engine, operate the drive system and control the lift, tilt and auxiliary hydraulic functions remotely using a Radio Transmitter. The operator must maintain visual contact with the loader and the loader's path of travel. Available for loaders equipped with Selectable Joystick Controls (SJC) or All Wheel Steer Loaders. Requires version 57 software or newer. Est. Install time: 0.5 hr.

6986516 Loader Radio Remote Operator Training Kit..... \$ _____

Reversing Fan Kits

7304960 Reversing Fan Kit..... \$ _____
 Temporarily reverses cooling fan direction to blow dust and small debris from the radiator and rear screens. Includes three operating modes: Automatic, Momentary and OFF. Cab Accessory Harness is required, see Cab Accessory Harness & Lower Interior Panels kit for details. Est. Install Time: 3 hrs.

Ride Control Kits

7246068 Ride Control Kit..... \$ _____
 Provides a smoother ride by cushioning the lift arms when traveling over rough terrain. Est. Install time:

Seats & Seat Belts

6703640 Seat Belt Kit, 3" Wide (Standard Seat) \$ _____
 For use with Standard Seat only. Includes 3" lap belt. Est. Install time: 0.5 hr.

7129303 Seat Belt Kit, 3" (Suspension Seat)..... \$ _____
 For use with Suspension Seat only. Includes 3" retractable lap belt. Est. Install time: 0.5 hr.

7128405 Seat Belt Kit, 3-Point..... \$ _____
 For use with Suspension Seat only. Includes 2" shoulder belt and 2" lap belt. Est. Install time: 0.5 hr.

7169480 Seat Belt Kit-3", 3-Point..... \$ _____
 For use with Suspension Seat only. Includes 2" shoulder belt and 3" lap belt. Est. Install time: 0.5 hr.

S450 (Tier 4)
Bobcat Skid-Steer Loader

Part Number	Description	SLP In US \$
-------------	-------------	--------------

Seats & Seat Belts (continued)

7128524	Suspension Seat..... Vinyl material. Must also order a seat belt kit unless previously equipped with suspension seat. Est. Install time: 1 hr.	\$ _____
7183366	Suspension Seat, Air Ride..... Vinyl material. Must also order a seat belt kit unless previously equipped with suspension seat. Est. Install time: 1 hr.	\$ _____

Sound Reduction Kits

7254140	Sound Reduction Kit..... Includes insulating materials and a hydraulic muffler to reduce sound levels at the operator's ear and for bystanders. Est. Install time: 2 hrs.	\$ _____
7252091	Deluxe Sound Kit for Standard or ACS Controls..... Includes foot pod insulating materials to reduce sound levels at the operator's ear. Est. Install time: 1 hr.	\$ _____
7252092	Deluxe Sound Kit for SJC Controls..... Includes foot pod insulating materials to reduce sound levels at the operator's ear. Est. Install time: 1 hr.	\$ _____

Training Kits

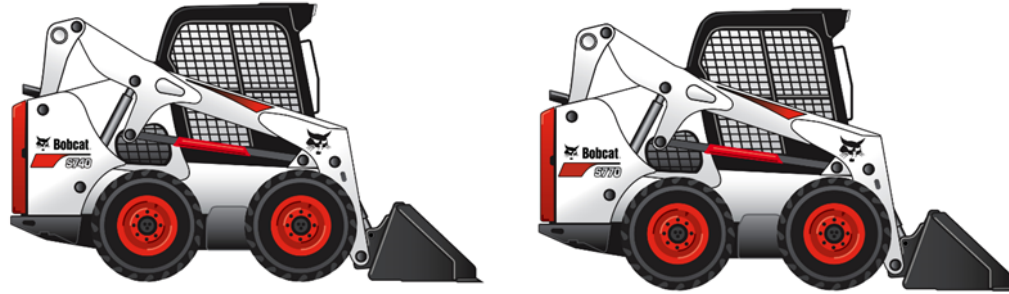
6901726	Bobcat Loader Operator Training Kit	\$ _____
6900641	Bobcat Loader Service Training Kit	\$ _____
6904762	Bobcat Operator Safety DVD	\$ _____

Includes all of the 10-minute operator safety videos in both English and Spanish.

Other Accessories

7129307	Fire Extinguisher Kit..... Est. Install time: 0.5 hr.	\$ _____
7257869	Loader Weighlog Scale Kit..... Measures hydraulic pressure at a specific position during the lifting cycle for either static or dynamic weighing. The weighlog kit is not a certified scale. Please see Bobcat Parts Sales & Merchandising Manual for additional details. Est. Install time: 4 hrs.	\$ _____
7023550	Locking Fuel Cap	\$ _____
	Includes a Black Locking Fuel Cap which is keyed the same as the loader. Key is Not included. Additional locking fuel cap options are available through parts.	
7128403	Security Locks Kit..... Est. Install time: 0.5 hrs	\$ _____
7023550	Locking Fuel Cap	\$ _____
	Includes a Black Locking Fuel Cap which is keyed the same as the loader. Key is Not included. Ac	

**S740/S770 (Tier 4)
 Bobcat Skid-Steer Loader**



Standard Equipment

74 HP Turbo Tier 4 Diesel Engine (S740)
 92 HP Turbo Tier 4 Diesel Engine (S770)
 Air Intake Heater (Automatically Activated)
 Bob-Tach Attachment System
 Backup Alarm
 Bob-Tach Attachment System
 Bobcat Interlock Control System (BICS™)
 Controls: Bobcat Standard
 Cylinder Cushioning – Lift, Tilt
 Engine/Hydraulic Systems Shutdown
 Instrumentation: Engine Temperature & Fuel Gauges,
 Hourmeter, RPM and Warning Lights
 Lift Arm Support
 Lift Path: Vertical

Lights, Front & Rear
 Operator Cab
 - Includes: Adjustable Suspension Seat, Top & Rear
 Windows, Parking Brake, Seat Bar & Seat Belt
 - Roll Over Protective Structure (ROPS) meets
 SAE-J1040 & ISO 3471
 - Falling Object Protective Structure (FOPS) meets
 SAE-J1043 & ISO 3449, Level I; (Level
 II is available through Bobcat Parts)
 Tires: 12-16.5, 12 PR, Bobcat Heavy Duty
 Warranty: 2 years, or 2000 hours whichever occurs first

Quick Specs

	<u>S740</u>	<u>S770</u>
Rated Operating Capacity.....	3,100 lbs.	3,350 lbs.
Engine Model.....	3.4L Bobcat Engine	3.4L Bobcat Engine
Engine Fuel.....	Diesel	Diesel
Engine Cooling.....	Liquid	Liquid
Horsepower.....	74	92
Hydraulic Pump Capacity – Standard Flow.....	23.0 GPM	23.0 GPM
Travel Speed.....	7.1 MPH	7.1 MPH
Travel Speed – 2 Speed with SJC.....	7.1/12.3 MPH	7.1/12.3 MPH
Operating Weight.....	8,794 lbs.	9,314 lbs.
Shipping Weight.....	7,917 lbs.	8,428 lbs.
Cab Height.....	81.3"	81.3"
Width (w/out Attachment).....	72.1"	72.1"
Length (w/out Attachment).....	114.3"	114.3"
Wheelbase.....	48.3"	48.3"
Reach at Maximum Height.....	33.6"	33.6"
Height to Hinge Pin.....	132"	131.4"

**S740/S770 (Tier 4)
 Bobcat Skid-Steer Loader**

Part Number	Description	SLP In US \$
-------------	-------------	--------------

M0275	S740 Skid-Steer Loader (Equipped with T4 Engine).....	\$54,631
M0283	S770 Skid-Steer Loader (Equipped with T4 Engine).....	\$61,246

Part Number	Description	SLP In US \$
-------------	-------------	--------------

CAN BE SELECTED WITH PACKAGES OR WITH INDIVIDUAL OPTIONS

Tires

M_-R09-C03	12-16.5, 12 Pr, Bobcat Heavy Duty Tires Offset..... Loader width 68.5"	\$92
------------	---	------

Controls

M02__-R01-C04	Selectable Joystick Control (SJC)..... Features include: Selectable patterns (ISO or H-Pattern), Auto Idle, Horsepower Management, Speed Management, Drive Response, Drift Compensation and Foot Pedal for Engine Speed Control. *The Cab Accessories Package is required via Individual Factory Option if option ordered without package.	\$945
---------------	---	-------

Part Number	Description	SLP In US \$
-------------	-------------	--------------

MUST SELECT ONE COMFORT AND ONE PERFORMANCE PACKAGE OR SELECT INDIVIDUAL OPTIONS

M_-P07-C10	C10 Comfort Package..... Includes: Open Cab, Cab Accessories Package, Standard Panel, Adjustable Suspension Seat	\$495
M_-P07-C23	C23 Comfort Package..... Includes: Enclosed Cab with AC/Heat, Sound Reduction, Cab Accessories Package, Standard Panel, Adjustable Suspension Seat	\$4,752
M_-P07-C27	C27 Comfort Package..... Includes: Enclosed Cab with AC/Heat, Sound Reduction, Cab Accessories Package, Standard Panel, Radio, Heated Cloth Air Ride Suspension Seat	\$5,725
M_-P07-C37	C37 Comfort Package..... Includes: Enclosed Cab with AC/Heat, Sound Reduction, Cab Accessories Package, Deluxe Instrument Panel with Keyless Start, Radio, Heated Cloth Air Ride Suspension Seat	\$6,435

S740/S770 (Tier 4)
Bobcat Skid-Steer Loader

Part Number	Description	Performance Cab Packages	SLP in US \$
-------------	-------------	--------------------------	--------------

MUST SELECT ONE COMFORT AND ONE PERFORMANCE PACKAGE OR SELECT INDIVIDUAL OPTIONS

<u>Standard Flow Packages:</u>			
M02_-P06-P13	P13 Performance Package.....		\$1,418
	Includes: Power Bob-Tach, Hydraulic Bucket Positioning		
M02_-P06-P22	P22 Performance Package.....		\$2,583
	Includes: Power Bob-Tach, 2-Speed		
M02_-P06-P24	P24 Performance Package.....		\$3,882
	Includes: Power Bob-Tach, 2-Speed, Hydraulic Bucket Positioning, Automatic Ride Control		
M02_-P06-P29	P29 Performance Package.....		\$4,743
	Includes: Power Bob-Tach, Attachment Control Kit, 2-Speed, Hydraulic Bucket Positioning, Automatic Ride Control, Reversing Fan		
M02_-P06-P39	P39 Performance Package.....		\$5,950
	Includes: Bob-Dock Ready, Power Bob-Tach, Attachment Control Kit, 2-Speed, Hydraulic Bucket Positioning, Automatic Ride Control, Reversing Fan		
<u>High Flow Packages:</u>			
M02_-P06-P68	P68 Performance Package.....		\$6,373
	Includes: Power Bob-Tach, Attachment Control Kit, High Flow, 2-Speed, Hydraulic Bucket Positioning, Automatic Ride Control		
M02_-P06-P69	P69 Performance Package.....		\$6,989
	Includes: Power Bob-Tach, Attachment Control Kit, High Flow, 2-Speed, Hydraulic Bucket Positioning, Automatic Ride Control, Reversing Fan		
M02_-P06-P79	P79 Performance Package.....		\$8,196
	Includes: Bob-Dock Ready, Power Bob-Tach, Attachment Control Kit, High Flow, 2-Speed, Hydraulic Bucket Positioning, Automatic Ride Control, Reversing Fan		

**S740/S770 (Tier 4)
 Bobcat Skid-Steer Loader**

Part Number	Description	Individual Factory Options	SLP in US \$
-------------	-------------	----------------------------	--------------

CANNOT BE ADDED TO ANY ORDER WITH COMFORT AND PERFORMANCE PACKAGE SELECTION

NOTE: Individual Options SLP includes a 20% premium when compared to ordering the option in a package

NOTE: Several individual options may require additional equipment, see details below. If the option requires additional equipment the Bobcat ordering systems will automatically add the required equipment to the order.

Individual Cab Options

M_-R25-C04	Enclosed Cab With AC/Heat..... Deluxe cab with heat and air conditioning	\$4,535
M02_-R25-C03	Enclosed Cab With Heat..... Deluxe cab with heat	\$2,758
M_-R70-C02	Sound Reduction..... Reduces operator and by-stander noise levels	\$574
M_-R08-C03	Deluxe Instrument Panel with Keyless Start..... Monitors key loader functions, communicates alerts and provides additional attachment information to track usage.	\$852
M_-R26-C02	Radio..... Includes weatherproof AM/FM/NOAA Weather Band Radio, Speakers, and Antenna. Works with MP3 or other portable music player. The Cab Accessories Package is required. See NOTE above.	\$598
M_-R80-C02	Cab Accessories Package..... Deluxe Headliner with Dome Light, Cab Accessory Harness, Power Port, Lower Interior Panels with Storage Compartments and Cup Holder. Required for Reversing Fan, Hydraulic Bucket Positioning, Automatic Ride Control, and SJC, Radio, Air Ride Heated Seat, Power Bob-Tach. Required for Reversing Fan, Hydraulic Bucket Positioning, Automatic Ride Control, and SJC,	\$594
M_-R05-C12	Cloth Heated Air Ride Suspension Seat..... Includes Heat on/off switch on the back of the seat. The Cab Accessories Package is required. See NOTE above.	\$570

Individual Performance Options

M_-R06-C03	Power Bob-Tach Atchment System Connect and disconnect non-hydraulic attachments from inside the cab The Cab Accessories Package is required. See NOTE above.	\$1,032
M_-R06-C09	Bob-Dock Ready Attachment System..... Includes Power Bob-Tach, Bob-Dock interface plate, Tee and capped auxiliary hydraulic line within loader lift arm. Connect and disconnect hydraulic attachments from inside the cab. The Cab Accessories Package is required. See NOTE above.	\$2,480
M_-R28-C02	7-Pin Attachment Control Kit..... Required for High Flow Hydraulics.	\$294
M02_-R03-C03	High Flow Hydraulics..... Provides 26.7 GPM and 3500 PSI for attachment operation. The 7-pin attachment control kit is required.	\$2,695
M_-R04-C02	2-Speed..... Includes 2-Speed motors and 3-Point Seat Belt Low Travel Speed 7.1 MPH, High Travel Speed 10.4 MPH	\$2,068

S740/S770 (Tier 4)
Bobcat Skid-Steer Loader

Part Number	Description	Individual Factory Options	SLP in US \$
-------------	-------------	----------------------------	--------------

Individual Performance Options

M_-R11-C02	Hydraulic Bucket Positioning.....	Bucket Positioning helps the operator keep the same tilt of the load during lifting. Includes On/Off switch. The Cab Accessories Package is required. See NOTE above.	\$670
M_-R33-C02	Automatic Ride Control.....	Automatically activates by detecting increased hydraulic lift arm pressure when the loader is carrying material. Includes on/off switch. The Cab Accessories Package is required. See NOTE above.	\$889
M_-R32-C02	Reversing Fan.....	Temporarily reverses the cooling fan direction to blow dust and small debris from the radiator and rear screens. Includes three operating modes: Automatic, Momentary, & OFF. The Cab Accessories Package is required. See NOTE above.	\$739

Part Number	Description	Dealer Installed Accessories	SLP in US \$
-------------	-------------	------------------------------	--------------

Bob-Dock Attachment Mounting System – Whole Goods Accessories

7346768	Bob-Dock Adapter Plate.....	The adapter plate connects to your hydraulic attachment and has a locked hydraulic connection integrated within. The adapter can stay with the attachment permanently, or it can be removed and installed on another attachment. The adapter plate attaches to most hydraulic attachments to allow the Bob-Dock system to seamlessly connect and disconnect from hydraulic attachments. Note: Customers may require more than one Bob-Dock Adaptor Plate	\$1,132
---------	-----------------------------	---	---------

Bob-Dock Attachment Mounting System – Aftermarket Parts Accessories

7348816	700's Bob-Dock Completion Kit.....	Completion kit contains all the hose and the coupler block to complete a Bob-Dock Ready machine Note: Is required for full functionality of Bob-Dock attachment mounting system	\$ _____
7360442	Bob-Dock Adapter Fitting Kit.....	This kit should be used when installing a high flow attachment with the Bob-Dock system.	\$ _____
7363740	Bob-Dock Shield Kit.....	Kit includes steel shield for rear of valve block on Bob-Tach, rubber guard that cable ties onto	\$ _____
7352994	Bob-Dock Attachment Guard Kit.....	This kit adds protection from debris damaging the Bob-Dock couplers when using the Bob-Dock system with grapple buckets	\$ _____
7352995	Bob-Dock Attachment Guard Kit.....	This kit adds protection from debris damaging the Bob-Dock couplers when using the Bob-Dock system with combination buckets	\$ _____

S850 (Tier 4)
Bobcat Skid-Steer Loader



Standard Equipment

100 HP Turbo Tier 4 Diesel Engine
 2-Speed Travel
 Air Intake Heater (Automatically Activated)
 Bob-Tach Attachment System
 Backup Alarm
 Bob-Tach Attachment System
 Bobcat Interlock Control System (BICS™)
 Controls: Bobcat Standard with Power Assist
 Cylinder Cushioning – Lift, Tilt
 Engine/Hydraulic Systems Shutdown
 Instrumentation: Engine Temperature & Fuel Gauges,
 Hourmeter, RPM and Warning Lights
 Lift Arm Support
 Lift Path: Vertical

Lights, Front & Rear
 Operator Cab
 - Includes: Adjustable Suspension Seat, Top & Rear
 Windows, Parking Brake, Seat Bar & Seat Belt
 - Roll Over Protective Structure (ROPS) meets
 SAE-J1040 & ISO 3471
 - Falling Object Protective Structure (FOPS) meets
 SAE-J1043 & ISO 3449, Level I; (Level
 II is available through Bobcat Parts)
 Tires: 14-17.5, 14 PR, Bobcat Heavy Duty
 Warranty: 2 years, or 2000 hours whichever occurs first

Quick Specs

	S850
Rated Operating Capacity.....	3,950 lbs.
Engine Model.....	3.4L Bobcat Engine
Engine Fuel.....	Diesel
Engine Cooling.....	Liquid
Horsepower.....	100
Hydraulic Pump Capacity – Standard Flow.....	23.0 GPM
Travel Speed.....	7.1 MPH
Travel Speed – 2 Speed with SJC.....	7.1/12.3 MPH
Operating Weight.....	10,237 lbs.
Shipping Weight.....	9,310 lbs.
Cab Height.....	83.4"
Width (w/out Attachment).....	79"
Length (w/out Attachment).....	119.3"
Wheelbase.....	52.9"
Reach at Maximum Height.....	30.7"
Height to Hinge Pin.....	144"

S850 (Tier 4)
Bobcat Skid-Steer Loader

Part Number	Description	SLP In US \$
-------------	-------------	--------------

M0289	S850 Skid-Steer Loader (Equipped with T4 Engine).....	\$70,914
-------	---	----------

Part Number	Description	SLP In US \$
-------------	-------------	--------------

CAN BE SELECTED WITH PACKAGES OR WITH INDIVIDUAL OPTIONS

Controls

M02__-R01-C04	Selectable Joystick Control (SJC)..... Features include: Selectable patterns (ISO or H-Pattern), Auto Idle, Horsepower Management, Speed Management, Drive Response, Drift Compensation and Foot Pedal for Engine Speed Control. *The Cab Accessories Package is required via Individual Factory Option if option ordered without package.	\$945
---------------	---	-------

Part Number	Description	SLP In US \$
-------------	-------------	--------------

MUST SELECT ONE COMFORT AND ONE PERFORMANCE PACKAGE OR SELECT INDIVIDUAL OPTIONS

M_-P07-C10	C10 Comfort Package..... Includes: Open Cab, Cab Accessories Package, Standard Panel, Adjustable Suspension Seat	\$495
M_-P07-C23	C23 Comfort Package..... Includes: Enclosed Cab with AC/Heat, Sound Reduction, Cab Accessories Package, Standard Panel, Adjustable Suspension Seat	\$4,752
M_-P07-C27	C27 Comfort Package..... Includes: Enclosed Cab with AC/Heat, Sound Reduction, Cab Accessories Package, Standard Panel, Radio, Heated Cloth Air Ride Suspension Seat	\$5,725
M_-P07-C37	C37 Comfort Package..... Includes: Enclosed Cab with AC/Heat, Sound Reduction, Cab Accessories Package, Deluxe Instrument Panel with Keyless Start, Radio, Heated Cloth Air Ride Suspension Seat	\$6,435

Part Number	Description	SLP in US \$
-------------	-------------	--------------

MUST SELECT ONE COMFORT AND ONE PERFORMANCE PACKAGE OR SELECT INDIVIDUAL OPTIONS

Standard Flow Packages:

M0289-P06-P22	P22 Performance Package..... Includes: Power Bob-Tach, 2-Speed	\$860
M0289-P06-P24	P24 Performance Package..... Includes: Power Bob-Tach, 2-Speed, Hydraulic Bucket Positioning, Automatic Ride Control	\$2,159
M0289-P06-P29	P29 Performance Package..... Includes: Power Bob-Tach, Attachment Control Kit, 2-Speed, Hydraulic Bucket Positioning, Automatic Ride Control, Reversing Fan	\$3,020

High Flow Packages:

M0289-P06-P68	P68 Performance Package..... Includes: Power Bob-Tach, Attachment Control Kit, High Flow, 2-Speed, Hydraulic Bucket Positioning, Automatic Ride Control	\$4,650
M0289-P06-P69	P69 Performance Package..... Includes: Power Bob-Tach, Attachment Control Kit, High Flow, 2-Speed, Hydraulic Bucket Positioning, Automatic Ride Control, Reversing Fan	\$5,266

S850 (Tier 4)
Bobcat Skid-Steer Loader

Part Number	Description	Individual Factory Options	SLP in US \$
-------------	-------------	----------------------------	--------------

CANNOT BE ADDED TO ANY ORDER WITH COMFORT AND PERFORMANCE PACKAGE SELECTION

NOTE: Individual Options SLP includes a 20% premium when compared to ordering the option in a package

NOTE: Several individual options may require additional equipment, see details below. If the option requires additional equipment the Bobcat ordering systems will automatically add the required equipment to the order.

Individual Cab Options

M_-R25-C04	Enclosed Cab With AC/Heat..... Deluxe cab with heat and air conditioning	\$4,535
M_-R70-C02	Sound Reduction..... Reduces operator and by-stander noise levels	\$574
M_-R08-C03	Deluxe Instrument Panel with Keyless Start..... Monitors key loader functions, communicates alerts and provides additional attachment information to track usage.	\$852
M_-R26-C02	Radio..... Includes weatherproof AM/FM/NOAA Weather Band Radio, Speakers, and Antenna. Works with MP3 or other portable music player. The Cab Accessories Package is required. See NOTE	\$598
M_-R05-C12	Cloth Heated Air Ride Suspension Seat..... Includes Heat on/off switch on the back of the seat. The Cab Accessories Package is required. See NOTE above.	\$570

Individual Performance Options

M_-R06-C03	Power Bob-Tach Attachment System Connect and disconnect non-hydraulic attachments from inside the cab The Cab Accessories Package is required. See NOTE above.	\$1,032
M_-R28-C02	7-Pin Attachment Control Kit..... Required for High Flow Hydraulics.	\$294
M02__-R03-C03	High Flow Hydraulics..... Provides 26.7 GPM and 3500 PSI for attachment operation. The 7-pin attachment control kit is required.	\$2,695
M_-R11-C02	Hydraulic Bucket Positioning..... Bucket Positioning helps the operator keep the same tilt of the load during lifting. Includes On/Off switch. The Cab Accessories Package is required. See NOTE above.	\$670
M_-R33-C02	Automatic Ride Control..... Automatically activates by detecting increased hydraulic lift arm pressure when the loader is carrying material. Includes on/off switch. The Cab Accessories Package is required. See NOTE	\$889
M_-R32-C02	Reversing Fan..... Temporarily reverses the cooling fan direction to blow dust and small debris from the radiator and rear screens. Includes three operating modes: Automatic, Momentary, & OFF. The Cab	\$739

S630/S650/S740/S750/S770/S850 (Tier 4)
Bobcat Skid-Steer Loader

Part Number Description SLP In US \$

Part numbers for kits in this section are current as of October 2016 and pertain to current loader models as of that date. To ensure having the correct Part Number for a Dealer Installed Accessory, obtain the loader model and serial number and check with Dealer Parts Department. For the most current Dealer Installed Accessories pricing, refer to BobQuote or Dealer Parts Department.

Cab Accessories - Enclosures, Doors, Windows

7128393	Cab Enclosure Door Kit..... Cab Accessory Harness is required, see Cab Accessory Harness & Lower Interior Panels kit for details. Includes Front Door with Sensor Switch and Wiper/Washer. Must also order Side Windows Kit and Cab Seals Kit to completely enclose cab. Est. Install time: 3.5 hrs.	\$ _____
7186723	Fops Window Kit..... Est. Install time: 10 min.	\$ _____
7174127	Forestry Door Kit..... Cab Accessory Harness is required, see Cab Accessory Harness & Lower Interior Panels kit for details. Est. Install time: 2 hrs.	\$ _____
7182335	Sliding Side Lexan Windows Kit..... Includes 2 Sliding Side Lexan Windows. Est. Install time: 1 hr.	\$ _____
7128342	Sliding Side Windows Kit..... Includes 2 Sliding Side Windows. Must also order Cab Enclosure Door Kit to completely enclose cab. Est. Install time: 1 hr.	\$ _____
7128395	Special Applications Polycarbonate Door Kit..... Provides added operator protection during some attachment applications. Includes ½" thick polycarbonate front door. Must order a Side Windows Kit, Cab Seals Kit and Special Applications Rear Window to completely enclose cab. Est. Install time: 3 hrs.	\$ _____
7214673	Special Applications Polycarbonate Rear Window Kit..... Provides added operator protection during some attachment applications. Includes ½" thick polycarbonate rear window. Must order a Side Windows Kit, Cab Seals Kit and Special Applications Front Door to completely enclose cab. Est. Install time: 0.5 hr.	\$ _____

Cab Accessories - Heating and Air Conditioning

7238378	Air Conditioning Kit (S630/S650)..... Loader must be equipped with Cab Enclosure with Heater. Est. Install time: 8 hrs.	\$ _____
7252056	Air Conditioning Kit (S740/S750/S770)..... Loader must be equipped with Cab Enclosure with Heater. Est. Install time: 8 hrs.	\$ _____
7252060	Air Conditioning Kit (S850)..... Loader must be equipped with Cab Enclosure with Heater. Est. Install time: 8 hrs.	\$ _____
7128484	Heater Kit..... Cab Accessory Harness is required, see Cab Accessory Harness & Lower Interior Panels kit for details. Must also order heater plumbing kit. Est. Install time: 5 hrs. to install heater and plumbing kit.	\$ _____
7238377	Heater Plumbing Kit (S630/S650)..... Est. Install time: 5 hrs. to install heater and plumbing kit	\$ _____
7256971	Heater Plumbing Kit (S740)..... Est. Install time: 5 hrs. to install heater and plumbing kit	\$ _____
7252058	Heater Plumbing Kit (S750/S770)..... Est. Install time: 5 hrs. to install heater and plumbing kit	\$ _____
7252062	Heater Plumbing Kit (S850)..... Est. Install time: 5 hrs. to install heater and plumbing kit	\$ _____
7200657	Lower Air Duct Kit..... Includes two additional air ducts to direct air flow towards the foot well and lower cab door area. Loader must be equipped with Cab Enclosure and Heater or Air Conditioning. Est. Install time: 1-3 hrs. (depends on loader model and s/n)	\$ _____

S630/S650/S740/S750/S770/S850 (Tier 4)
Bobcat Skid-Steer Loader

Part Number Dealer Installed Accessories - Order From Parts SLP In US \$

Cab Accessories - Other

_____	Cab Accessory Harness & Lower Interior Panels Kit.....	\$ _____
	See Dealer Parts Department for the correct kit part number. This kit is needed for Base Cabs Only when field installing any of the following accessories; cab enclosure with heat or air conditioning, four-way flasher / turn signal kit, hydraulic bucket positioning, power Bob-Tach kit, rear wiper kit, rotating beacon kit, strobe light kit or radio. Includes Cab Accessory Harness and Lower Interior Panels. Need to order Deluxe Headliner Kit or Deluxe Heater/Air Conditioning Headliner Kit & Cup Holder Kit to finish interior. Est. Install time: 5 hrs.	
7167395	Cup Holder Kit.....	\$ _____
	Lower Interior Panels are required, see Cab Accessory Harness & Lower Interior Panels kit for details. Includes side and front cup holder. Est. Install time: 1 hr.	
7174903	Cab Seals Kit (S630/S650/S740/S750/S770).....	\$ _____
	Includes bottom of cab and foot pod area seals. Needed to completely enclose the cab. Est. Install time: 2.5 hrs.	
7192140	Cab Seals Kit (S850).....	\$ _____
	Includes bottom of cab and foot pod area seals. Needed to completely enclose the cab. Est. Install time: 2.5 hrs.	
7170782	Deluxe Cab Gas Spring Kit.....	\$ _____
	3rd gas spring for enclosed cab. Est. Install time: 1 hr.	
7156253	Deluxe Headliner Kit.....	\$ _____
	Includes headliner with light and rear corner cab trim. Est. Install time: 1 hr.	
7174171	Deluxe Heater / Air Conditioning Headliner Kit.....	\$ _____
	Includes Headliner with interior light, air conditioning/heater vents and rear corner cab trim. Needed to upgrade non-AC/Heater cab to include AC/Heat. Est. Install time: 1 hr.	
7196560	Forestry Wiper Kit.....	\$ _____
	Loader must be equipped with Forestry Door; Reference P/N 7174127 Forestry Door or 7230523 Forestry Applications Kit for detail. Est. Install time: 1 hr	
7238900	HEPA Filter Kit.....	\$ _____
	Est. Install time: 0.5 hr.	
7240148	Intermittent Wiper Kit.....	\$ _____
	Includes intermittent wiper switch, cover, harness and tie straps. Kit allows operator to adjust the speed of the wiper to match the operating conditions. Est. Install time: 1 hr.	
6725946	Rear Window External Removal Kit.....	\$ _____
	Recommended for use with Loader Radio Remote Control kit. Est. Install time: 1 hr.	
7225133	Rear Wiper Kit.....	\$ _____
	Cab Accessory Harness is required, see Cab Accessory Harness & Lower Interior Panels kit for details. Deluxe Headliner, Lower Interior Panels and Front Door with Wiper are also required. Wiper is activated by a switch on the rear wiper motor. Est. Install time: 4 hrs.	
7172897	Reseal Plugs Kit.....	\$ _____
	Includes plugs to seal cab and frame after the removal of the following: FOPS Kit, Single Point Lift Kit, Four Point Lift Kit, and Backhoe Attachment. Est. Install time: 1 hr.	
7172903	White Decal Kit (Cab Top).....	\$ _____
	Applied to cab top to maintain a cooler temperature inside the operator's cab. Est. Install time:	
7257723	Forestry Applications Kit – Tier 4 S770.....	\$ _____
	Kit is required to operate Forestry Cutter and provides operator and machine protection. For kit contents, see Forestry Cutter in Attachments Section. Not compatible with Rear Auxiliary Hydraulics. Must also order Engine Compartment Seal Kit, order from parts. Est. Install time: 6.5 hrs. Note: Forestry Wiper Kit (P/N 7196560) is available for the Forestry Applications Kit, order from parts.	

S630/S650/S740/S750/S770/S850 (Tier 4)
Bobcat Skid-Steer Loader

Part Number	Description	SLP In US \$
-------------	-------------	--------------

Counterweight Kits

7204279	Counterweight Kit- Front Axle (S630/S650/S740/S750/S770)..... Includes axle weights and hardware. Increases down force on attachments. It does not increase the Rated Operating Capacity (ROC) of the loader. Est. Install time: 1.5 hrs.	\$ _____
7129250	Counterweight Kit, 200 lbs..... Includes (4) 50 pound weights that bolt to rear uprights of loader. See operator's manual for ROC increase. Not compatible with Quick-Tach Water Kit or Rear Stabilizers. Est. Install time:	\$ _____
7129251	Counterweight Kit, 300 lbs..... Includes (6) 50 lb weights that bolt to rear uprights of loader. See operator's manual for ROC increase. Not compatible with the Quick-Tach Water Kit or Rear Stabilizers. Est. Install time: 1	\$ _____
7129252	Counterweight Kit, 400 lbs (S740/S750/S770/S850)..... Includes (8) 50 lb weights that bolt to rear uprights of loader. See operator's manual for ROC increase. Not compatible with the Quick-Tach Water Kit or Rear Stabilizers. Est. Install time: 1	\$ _____

Electrical Accessories

_____	Attachment Control Kit For complete listing of Attachment Control Kits, P/N's and Descriptions – Refer to the Attachments Section of the Price Pages.	\$ _____
7169103	Cab Accessory Adapter Harness..... For Loaders without Cab Accessory Harness. Needed for Strobe, Beacon and Four-Way Flasher. Est. Install time: 0.5 hr.	\$ _____
7128338	Four-Way Flasher / Turn Signal Kit..... Cab Accessory Harness or Cab Accessory Adapter Harness is required; Reference Cab Accessory Harness & Lower Interior Panels kit or Cab Accessory Adapter Harness for details. Est. Install time: 1 hr.	\$ _____
7129299	Rotating Beacon Kit..... Cab Accessory Harness or Cab Accessory Adapter Harness is required; Reference Cab Accessory Harness & Lower Interior Panels kit or Cab Accessory Adapter Harness for details. Est. Install time: 1 hr.	\$ _____
7129301	Strobe Light Kit, Amber..... Cab Accessory Harness or Cab Accessory Adapter Harness is required; Reference Cab Accessory Harness & Lower Interior Panels kit or Cab Accessory Adapter Harness for details. Est. Install time: 1 hr.	\$ _____
7256348	Side Light Kit..... Includes two LED side lights. Est. Install time: 0.5 hr.	\$ _____

Engine Accessories

_____	Air Cleaner Pre-Cleaner (S630/S650)..... Order the following from parts: Hose (iT4: 7157923, T4: 7234601), Hose Clamp (iT4: 5HM42, T4: 5HM53), and Instructions (iT4: 7149931, T4: 6990831). Est. Install time: 1 hr.	\$ _____
7265891	SCR Inhibit Switch Kit..... For S740/S750/S770/S850 equipped with Tier 4 Engine. Allows operator to perform a parked regeneration if too much soot is allowed to accumulate in the DPF. Est. Install time: 1 hr.	\$ _____
7239665	Engine Block Heater..... Est. Install time: 0.25 hrs.	\$ _____

S630/S650/S740/S750/S770/S850 (Tier 4)
Bobcat Skid-Steer Loader

Part Number Dealer Installed Accessories - Order From Parts SLP In US \$

Hydraulic Accessories

7129447	Hydraulic Bucket Positioning Kit..... Bucket Positioning helps the operator keep the same tilt position of the load during lifting. Cab Accessory Harness is required, see Cab Accessory Harness & Lower Interior Panels kit for details. Includes on/off switch. Est. Install time: 3 hrs.	\$ _____
7128442	Hydraulic Bucket Positioning Kit..... Bucket Positioning helps the operator keep the same tilt position of the load during lifting. Cab Accessory Harness is required, see Cab Accessory Harness & Lower Interior Panels kit for details. Includes on/off switch. Est. Install time: 3 hrs.	\$ _____
7188811	Hydraulic Bucket Positioning Kit (S850)..... Bucket Positioning helps the operator keep the same tilt position of the load during lifting. Cab Accessory Harness is required, see Cab Accessory Harness & Lower Interior Panels kit for details. Includes on/off switch. Est. Install time: 3 hrs.	\$ _____
7207408	Lift Cylinder Cushion Piston (S650/S740/S750/S770)..... Softens the contact between the lift arms and mainframe reducing noise. Must also order Piston Nut p/n 6810540.	\$ _____
7231414	Rear Auxiliary Hydraulic Kit (S630)..... Provides a flow of 8.5 GPM. Est. Install time: 10 hrs.	\$ _____
7231436	Rear Auxiliary Hydraulic Kit (S650)..... Provides a flow of 8.5 GPM. Est. Install time: 10 hrs.	\$ _____
7220912	Rear Auxiliary Hydraulic Kit (S740)..... Provides a flow of 8.5 GPM. Est. Install time: 10 hrs.	\$ _____
7268419	Rear Auxiliary Hydraulic Kit (S750/S770)..... Provides a flow of 8.5 GPM. Est. Install time: 10 hrs.	\$ _____
7270096	Rear Auxiliary Hydraulic Kit (S850)..... Provides a flow of 8.5 GPM. Est. Install time: 10 hrs.	\$ _____

Intrumentation

7213928	Deluxe Instrument Panel with Keyless Start..... Includes keyless start, feature lockouts, help screens, clock, job clock, system diagnostic capability and more. Est. Install time: 1 hr.	\$ _____
7213929	Keyless Start Panel Kit..... Allows operator to start the loader by entering a reprogrammable number code. Est. Install time: 1 hr.	\$ _____

Lift Kits

7128411	Four-Point Lift Kit (S630)..... Cannot be used on loaders equipped with Backhoe Mounting Kit or Bob-Dock Mounting System. Est. Install time: 2 hrs.	\$ _____
7368670	Four-Point Lift Kit – Bob-Dock Mounting System (S630)..... Cannot be used on loaders equipped with Backhoe Mounting Kit. Est. Install time: 2 hrs.	\$ _____
7368070	Four-Point Lift Kit – Bob-Dock Mounting System (S650/S740/S770)..... Cannot be used on loaders equipped with Backhoe Mounting Kit. Est. Install time: 2 hrs.	\$ _____
7156605	Four-Point Lift Kit (S650/S740/S750/S770)..... Cannot be used on loaders equipped with Backhoe Mounting Kit or Bob-Dock Mounting System. Est. Install time: 2 hrs.	\$ _____
7150698	Four-Point Lift Kit (S850)..... Cannot be used on loaders equipped with Backhoe Mounting Kit. Est. Install time: 2 hrs.	\$ _____

S630/S650/S740/S750/S770/S850 (Tier 4)
Bobcat Skid-Steer Loader

Part Number Dealer Installed Accessories - Order From Parts SLP In US \$

Lift Kits (continued)

7226713	Single Point Lift Kit (S630/S650/S740/S750/S770).....	\$ _____
	Est. Install time: 3 hrs.	
7128432	Single Point Lift Kit (S850).....	\$ _____
	Est. Install time: 3 hrs.	

Loader Guard Kits

7206200	Engine Compartment Seal Kit (S630).....	\$ _____
	Kit includes cab/mainframe seal, tailgate seal, mainframe slot covers and lift cylinder boots. Not compatible with Rear Auxiliary Hydraulics or Rear Stabilizers. Est. Install time: 1.5 hrs.	
7209981	Engine Compartment Seal Kit (S650).....	\$ _____
	Kit includes cab/mainframe seal, tailgate seal, mainframe slot covers and lift cylinder boots. Not compatible with Rear Auxiliary Hydraulics or Rear Stabilizers. Est. Install time: 1.5 hrs.	
7190789	Engine Compartment Seal Kit (S740/S750/S770).....	\$ _____
	Required when using M-series 700 Platform machines with forestry cutters. Kit includes cab/mainframe seal, tailgate seal, mainframe slot covers and lift cylinder boots. Not compatible with Rear Auxiliary Hydraulics or Rear Stabilizers. Est. Install time: 2 hrs.	
7179952	Engine Compartment Seal Kit (S850).....	\$ _____
	Required when using M-series 800 Platform machines with forestry cutters. Kit includes cab/Mainframe seal, tailgate seal, mainframe slot covers and lift cylinder boots. Not compatible	
7129293	FOPS Kit.....	\$ _____
	Additional shield assembly for cab top. Meets ISO 3449, Level II Requirements. Est. Install	
7174128	Rear Work Lights Guard Kit.....	\$ _____
	Est. Install time: 0.5 hr.	
7257724	Rear Work Lights Guard Kit (S750/S770/S850).....	\$ _____
	Est. Install time: 0.5 hr.	
7174129	Front Work Lights Guard Kit.....	\$ _____
	Est. Install time: 0.5 hr.	
7244920	Muffler Guard Kit.....	\$ _____
	Est. Install time: 0.25 hr.	
7249240	Power Bob-tach Guard Kit.....	\$ _____
	Est. Install time: 0.25 hr.	
7250844	Coupler Guard Kit.....	\$ _____
	Est. Install time: 5 min.	
7203665	Rear Bumper Kit.....	\$ _____
	Includes bolt-on Rubber Bumper and mounting hardware. Helps protect the rear of the loader from damage due to scraping or contact with objects in tight places. Est. Install time: 1 hr.	
7187059	Tilt Cylinder Shield Kit (S630/S650/S740/S750/S770).....	\$ _____
	Est. Install time: 0.5 hr.	
7187241	Tilt Cylinder Shield Kit (S850).....	\$ _____
	Est. Install time: 0.5 hr.	

S630/S650/S740/S750/S770/S850 (Tier 4)
Bobcat Skid-Steer Loader

Part Number Dealer Installed Accessories - Order From Parts SLP In US \$

Power Bob-Tach Kits

7310665	Power Bob-Tach Kit..... Cab Accessory Harness is required, see Cab Accessory Harness & Lower Interior Panels kit for details. Must also order Power Bob-Tach Plumbing Kit. Est. Install time: 4 hrs. to install Power Bob-Tach Kit and Plumbing Kit.	\$ _____
7310661	Power Bob-Tach Plumbing Kit (S630)..... Est. Install time: 4 hrs. to install Power Bob-Tach Kit and Plumbing Kit	\$ _____
7310663	Power Bob-Tach Plumbing Kit (S650)..... Est. Install time: 4 hrs. to install Power Bob-Tach Kit and Plumbing Kit	\$ _____
7310805	Power Bob-Tach Plumbing Kit (S740/S750/S770) Est. Install time: 4 hrs. to install Power Bob-Tach Kit and Plumbing Kit	\$ _____
_____	Power Bob-Tach Plumbing Kit – Tier 4 (S850)..... Est. Install time: 4 hrs. to install Power Bob-Tach Kit and Plumbing Kit	\$ _____

Bob-Dock Attachment Mounting System Kits

7359554	S630 Bob-Dock Completion Kit..... Completion kit contains all the hose and the coupler block to complete a Bob-Dock Ready	\$ _____
7359553	S650 Bob-Dock Completion Kit..... Completion kit contains all the hose and the coupler block to complete a Bob-Dock Ready	\$ _____
7348816	700's Bob-Dock Completion Kit..... Completion kit contains all the hose and the coupler block to complete a Bob-Dock Ready	\$ _____
7363740	Bob-Dock Shield Kit..... Kit includes steel shield for rear of valve block on Bob-Tach, rubber guard that cable ties onto Bob-Dock hoses that are routed closest to the ground. Est. Install time: 0.5 hr.	\$ _____

Radio

6988435	Radio Kit..... Includes weatherproof AM/FM/NOAA Weather Band Radio, Radio Mounting Bracket, Speakers, Antenna, and Installation Hardware. Works with MP3 or other portable music player. Cab Accessory Harness is required, see Cab Accessory Harness & Lower Interior Panels kit for details. Est. Install time: 3 hrs.	\$ _____
6676108	Radio Headphones.....	\$ _____

Rear Camera Kit

7329670	Rear Camera Kit..... Includes camera, display and required parts for complete installation. Est. Install time: 4 hrs.	\$ _____
---------	--	----------

Remote Control Kits

7185234	Loader Radio Remote Control Kit..... Allows an operator to start/stop the engine, operate the drive system and control the lift, tilt and auxiliary hydraulic functions remotely using a Radio Transmitter. The operator must maintain visual contact with the loader and the loader's path of travel. Available for loaders equipped with Selectable Joystick Controls (SJC) or All Wheel Steer Loaders. Requires version 57 software or newer. Est. Install time: 0.5 hr.	\$ _____
6986516	Loader Radio Remote Operator Training Kit.....	\$ _____

S630/S650/S740/S750/S770/S850 (Tier 4)
Bobcat Skid-Steer Loader

Part Number Dealer Installed Accessories - Order From Parts SLP In US \$

Reversing Fan Kits

7307657	Reversing Fan Kit (S630/S650)..... Temporarily reverses cooling fan direction to blow dust and small debris from the radiator and rear screens. Includes three operating modes: Automatic, Momentary and OFF. Cab Accessory Harness is required, see Cab Accessory Harness & Lower Interior Panels kit for details. Est. Install Time: 3 hrs.	\$ _____
7307658	Reversing Fan Kit (S740/S750/S770)..... Temporarily reverses cooling fan direction to blow dust and small debris from the radiator and rear screens. Includes three operating modes: Automatic, Momentary and OFF. Cab Accessory Harness is required, see Cab Accessory Harness & Lower Interior Panels kit for details. Est. Install Time: 3 hrs.	\$ _____
7307659	Reversing Fan Kit (S850)..... Temporarily reverses cooling fan direction to blow dust and small debris from the radiator and rear screens. Includes three operating modes: Automatic, Momentary and OFF. Cab Accessory Harness is required, see Cab Accessory Harness & Lower Interior Panels kit for details. Est. Install Time: 3 hrs.	\$ _____

Ride Control Kits

7300378	Ride Control Kit (S630/S650) - Manual..... Provides a smoother ride by cushioning the lift arms when traveling over rough terrain. Est. Install time: 1.5 hrs.	\$ _____
7306398	Ride Control Kit (S630/S650) - Auto..... Provides a smoother ride by cushioning the lift arms when traveling over rough terrain. Includes on/off switch inside of cab. Est. Install time: 4 hrs.	\$ _____
7300393	Ride Control Kit – Tier 4 (S740/S750/S770/S850) - Manual..... Provides a smoother ride by cushioning the lift arms when traveling over rough terrain. Est. Install time: 1.5 hrs.	\$ _____
7306402	Ride Control Kit – Tier 4 (S740/S750/S770) - Auto..... Provides a smoother ride by cushioning the lift arms when traveling over rough terrain. Includes on/off switch inside of cab. Est. Install time: 4 hrs.	\$ _____
7306404	Ride Control Kit – Tier 4 (S850) - Auto..... Provides a smoother ride by cushioning the lift arms when traveling over rough terrain. Includes on/off switch inside of cab. Est. Install time: 4 hrs.	\$ _____

Seats & Seat Belts

6703640	Seat Belt Kit, 3" Wide (Standard Seat) For use with Standard Seat only. Includes 3" lap belt. Est. Install time: 0.5 hr.	\$ _____
7129303	Seat Belt Kit, 3" (Suspension Seat)..... For use with Suspension Seat only. Includes 3" retractable lap belt. Est. Install time: 0.5 hr.	\$ _____
7128405	Seat Belt Kit, 3-Point..... For use with Suspension Seat only. Includes 2" shoulder belt and 2" lap belt. Est. Install time: 0.5 hr.	\$ _____
7169480	Seat Belt Kit-3", 3-Point..... For use with Suspension Seat only. Includes 2" shoulder belt and 3" lap belt. Est. Install time: 0.5 hr.	\$ _____
7128524	Suspension Seat..... Vinyl material. Must also order a seat belt kit unless previously equipped with suspension seat. Est. Install time: 1 hr.	\$ _____

S630/S650/S740/S750/S770/S850 (Tier 4)
Bobcat Skid-Steer Loader

Part Number Description Dealer Installed Accessories - Order From Parts SLP In US \$

Seats & Seat Belts (continued)

7183366	Suspension Seat, Air Ride..... Vinyl material. Must also order a seat belt kit unless previously equipped with suspension seat. Est. Install time: 1 hr.	\$ _____
7312807	Cloth Heated Air Ride Suspension Seat..... Includes Heat on/off switch on the back of the seat. The seat is not compatible with M-Series loaders and select M2-Series loaders. See Dealer Parts Department for the correct M2-Series loader serial number breaks.	\$ _____

Sound Reduction Kits

7213452	Sound Reduction Kit (S630/S650)..... Includes insulating materials and a hydraulic muffler to reduce sound levels at the operator's ear and for bystanders. Est. Install time: 2 hrs.	\$ _____
_____	Sound Reduction Kit (S850)..... Includes insulating materials and a hydraulic muffler to reduce sound levels at the operator's ear and for bystanders. Est. Install time: 2 hrs.	\$ _____
_____	Deluxe Sound Kit for Standard or ACS Controls (S850)..... Includes foot pod insulating materials to reduce sound levels at the operator's ear. Est. Install time: 1 hr.	\$ _____
_____	Deluxe Sound Kit for Standard or ACS Controls (S630/S650/S750/S770)..... Includes foot pod insulating materials to reduce sound levels at the operator's ear. Est. Install time: 1 hr.	\$ _____
_____	Deluxe Sound Kit for SJC Controls..... Includes foot pod insulating materials to reduce sound levels at the operator's ear. Est. Install time: 1 hr.	\$ _____

Training Kits

6901726	Bobcat Loader Operator Training Kit	\$ _____
6900641	Bobcat Loader Service Training Kit	\$ _____
6904762	Bobcat Operator Safety DVD	\$ _____

Includes all of the 10-minute operator safety videos in both English and Spanish.

Other Accessories

7257437	Air Deflector Kit..... Est. Install time: 0.5 hr.	\$ _____
7129307	Fire Extinguisher Kit..... Est. Install time: 0.5 hr.	\$ _____
7232264	HP Aspiration Kit..... Est. Install time: 0.5 hr.	\$ _____
7257869	Loader Weighlog Scale Kit..... Measures hydraulic pressure at a specific position during the lifting cycle for either static or dynamic weighing. The weighlog kit is not a certified scale. Please see Bobcat Parts Sales & Merchandising Manual for additional details. Est. Install time: 4 hrs.	\$ _____
_____	Locking Fuel Cap	\$ _____
	Includes a Black Locking Fuel Cap which is keyed the same as the loader. Key is Not included. Additional locking fuel cap options are available through parts.	
7128403	Security Locks Kit..... Est. Install time: 0.5 hrs	\$ _____