

DATE: \_\_\_\_\_ LOCATION: \_\_\_\_\_  
 TYPE: \_\_\_\_\_ PROJECT: \_\_\_\_\_  
 CATALOG #: \_\_\_\_\_

# AIRO TradeSELECT

AREA/SITE/ROAD LIGHTER

tradeSELECT®

## FEATURES

- Compact sleek design with multiple lumen output configurations and simple installation
- The Airo includes a universal mounting block for easy pole installation or mast arm accessory for 2-3/8 ft OD roadway brackets
- Micro Strike optical distributions of Type 3 or 4W
- 1.5G rated for high vibration applications including bridges and overpasses



AIRO (ASL1)

### RELATED PRODUCTS

- ⌘ [RAR1 Ratio](#)
- ⌘ [RAR2 Ratio](#)
- ⌘ [Cimarron LED](#)

## SPECIFICATIONS

### CONSTRUCTION

- Die-cast housing with hidden vertical heat fins that are optimal for heat dissipation while keeping a clean smooth outer surface
- Corrosion resistant, die-cast aluminum housing with powder coat paint finish
- Separate optical and electrical compartment for improved thermal management and optimum component operation
- TGIC thermoset polyester powder paint finish applied at nominal 2.5 mil thickness

### OPTICS

- Entire optical aperture illuminates to create a larger luminous surface area resulting in a low glare appearance without sacrificing optical performance
- Premium engineered individual acrylic lenses deliver IES Type 3 and 4W distributions
- Lens distributions are field rotatable (in 90° increments) or exchangeable for job site fine-tuning
- 4000K (70 CRI) CCT
- 160 midpower LEDs
- Zero uplight at 0 degrees of tilt

### INSTALLATION

- Universal mounting block works with #2 drill pattern
- Fixture ships with slotted mounting block to accommodate wide range of drill patterns for easy retrofit opportunities

### INSTALLATION (CONTINUED)

- Mast arm fitter accessory or option available for 2-3/8" OD brackets with vertical tilt of +3°, 0° or -3°

### ELECTRICAL

- Universal 120-277 VAC input voltage, 50/60 Hz
- Ambient operating temperature -40° C to 40° C
- Drivers have greater than 90% power factor and less than 20% THD
- LED drivers have output power over-voltage, over-current protection and short circuit protection with auto recovery
- Built in driver surge protection of 6kV.

### CONTROLS

- 0-10 Volt Dimmable Driver Standard controls

### CERTIFICATIONS

- Listed to UL1598 and CSA C22.2#250.0-24 for wet locations and 40°C ambient temperatures
- 1.5G rated for ANSI C136.31 high vibration applications
- IP65 optical assembly
- This product qualifies as a "designated country construction material" per FAR 52.225-11 Buy American-Construction Materials under Trade Agreements effective 04/23/2020. See [Buy American Solutions](#)

### WARRANTY

- 5 Year warranty
- See [HLI Standard Warranty](#) for additional information

KEY DATA	
Lumen Range	12,000–18,000
Wattage Range	100–135
Efficacy Range (LPW)	127–138
Weight lbs. (kg)	14.5–17.5 (6.6–8.0)

# AIRO Micro Strike

AREA/SITE/ROAD LIGHTER

## STOCK ORDERING INFORMATION

Catalog Number	Lumens	Wattage	LED Count	CCT/CRI	Voltage	Distribution	Mounting	Finish
ASL1-100-4W-ASQU	12000	100	160L	4000K/70CRI	120-277V	4W	Universal Arm	Dark Bronze Matte Textured
ASL1-100-3-ASQU	12000	100	160L	4000K/70CRI	120-277V	3	Universal Arm	Dark Bronze Matte Textured
ASL1-135-4W-ASQU	18000	135	160L	4000K/70CRI	120-277V	4W	Universal Arm	Dark Bronze Matte Textured
ASL1-135-3-ASQU	18000	135	160L	4000K/70CRI	120-277V	3	Universal Arm	Dark Bronze Matte Textured

## STOCK POLE COMBO

Catalog Number	Pole	Single or Double	Fixture	Distribution
ASL1-100-4K7-3-S20	20' Square Straight Steel	Single Head	ASL-160L-100-4K7	3
ASL1-100-4K7-4W-S20	20' Square Straight Steel	Single Head	ASL-160L-100-4K7	4W
ASL1-100-4K7-3-S20-2X	20' Square Straight Steel	Double Head (180°)	ASL-160L-100-4K7	3
ASL1-100-4K7-4W-S20-2X	20' Square Straight Steel	Double Head (180°)	ASL-160L-100-4K7	4W
ASL1-100-4K7-3-S25	25' Square Straight Steel	Single Head	ASL-160L-100-4K7	3
ASL1-100-4K7-4W-S25	25' Square Straight Steel	Single Head	ASL-160L-100-4K7	4W
ASL1-100-4K7-3-S25-2X	25' Square Straight Steel	Double Head (180°)	ASL-160L-100-4K7	3
ASL1-100-4K7-4W-S25-2X	25' Square Straight Steel	Double Head (180°)	ASL-160L-100-4K7	4W
ASL1-135-4K7-3-S20	20' Square Straight Steel	Single Head	ASL-160L-135-4K7	3
ASL1-135-4K7-4W-S20	20' Square Straight Steel	Single Head	ASL-160L-135-4K7	4W
ASL1-135-4K7-3-S20-2X	20' Square Straight Steel	Double Head (180°)	ASL-160L-135-4K7	3
ASL1-135-4K7-4W-S20-2X	20' Square Straight Steel	Double Head (180°)	ASL-160L-135-4K7	4W
ASL1-135-4K7-3-S25	25' Square Straight Steel	Single Head	ASL-160L-135-4K7	3
ASL1-135-4K7-4W-S25	25' Square Straight Steel	Single Head	ASL-160L-135-4K7	4W
ASL1-135-4K7-3-S25-2X	25' Square Straight Steel	Double Head (180°)	ASL-160L-135-4K7	3
ASL1-135-4K7-4W-S25-2X	25' Square Straight Steel	Double Head (180°)	ASL-160L-135-4K7	4W

## ACCESSORIES (ORDERED SEPARATELY)

Catalog Number	Description
<input type="checkbox"/> ASL1-HSS-90-B-XXX <sup>1</sup>	House Side Shield Back 90 deg
<input type="checkbox"/> ASL1-HSS-90-F-XXX <sup>1</sup>	House Side Shield Front 90 deg
<input type="checkbox"/> ASL1-HSS-90-S-XXX <sup>1</sup>	House Side Shield Side 90 deg
<input type="checkbox"/> ASL1-HSS-270-BSS-XXX <sup>1</sup>	House Side Shield Back, Side & Side 270 deg
<input type="checkbox"/> ASL1-HSS-270-FSS-XXX <sup>1</sup>	House Side Shield Front, Side & Side 270 deg
<input type="checkbox"/> ASL1-HSS-270-FSB-XXX <sup>1</sup>	House Side Shield Front, Side & Back 270 deg
<input type="checkbox"/> ASL1-HSS-360-XXX <sup>1</sup>	House Side Shield 360 deg
<input type="checkbox"/> ASL-MAF	Mast arm kit with wildlife shield for mounting on 2 3/8" OD arms
<input type="checkbox"/> SETA-XX <sup>1</sup>	Square pole tenon adapter (4 at 90 degrees) (2 3/8" OD tenon)
<input type="checkbox"/> RETA-XX <sup>1</sup>	Round pole tenon adapter (4 at 90 degrees) (2 3/8" OD tenon), requires CL1S-RPA4-ACC-XX for each luminaire
<input type="checkbox"/> RARBC160L	Backlight Control 160L
<input type="checkbox"/> CL1S-RPA4-ACC-XX <sup>1</sup>	Round Pole Adapter (* denotes pole diameter; 3 = 3 1/4" -3 3/4"; 4* = 3 7/8" - 6")
<input type="checkbox"/> ASL-ARMMTG-XX <sup>1</sup>	Arm mounting kit for side of pole attachment
<input type="checkbox"/> WB-AREA-XX <sup>1</sup>	Wall bracket, Compatible with standard arm mount option

1 Replace XX or XXX with color choice, eg.: DB for Dark Bronze or BLT for Black Matte Textured

# AIRO Micro Strike

AREA/SITE/ROAD LIGHTER

## PERFORMANCE DATA

Description	Nominal Wattage	System Watts	Dist. Type	5K (5000K NOMINAL 70 CRI)					4K (4000K NOMINAL 70 CRI)					3K (3000K NOMINAL 80 CRI)				
				Lumens	LPW <sup>1</sup>	B	U	G	Lumens	LPW <sup>1</sup>	B	U	G	Lumens	LPW <sup>1</sup>	B	U	G
ASL1	100	88.0	2	11945	136	2	0	2	11886	135	2	0	2	11232	128	2	0	2
			3	12070	137	2	0	2	12010	136	2	0	2	11349	129	2	0	2
			4W	11846	135	2	0	3	11787	134	2	0	3	11139	127	2	0	3
			5QW	12131	138	4	0	2	12070	137	4	0	2	11403	130	4	0	2
	135	133.3	2	18089	136	3	0	3	17999	135	3	0	3	17275	130	3	0	3
			3	17861	134	2	0	2	17776	133	2	0	2	17092	128	2	0	2
			4W	17653	132	2	0	3	17569	132	2	0	3	16893	127	2	0	3
			5QW	18155	136	4	0	2	18064	136	4	0	2	17338	130	4	0	2

<sup>1</sup> VAC input Lumen values are from photometric test performed in accordance with IESNA LM-79-08. Data is considered to be representative of the configurations. Actual performance may differ as a result of end-user environment and application.

## ELECTRICAL DATA

Family	Nominal Wattage	Input Voltage (Volts)	Current (AMPS)	System Power (Watts)
AIRO (ASL1)	100	120	0.73	88
		208	0.42	
		240	0.37	
		277	0.32	
		347	0.25	
		480	0.18	
	135	120	1.11	133.3
		208	0.64	
		240	0.56	
		277	0.48	
		347	0.38	
		480	0.28	

## PROJECTED LUMEN MAINTENANCE

Ambient Temperature	OPERATING HOURS					
	0	25,000	TM-21-11' L96 60,000	50,000	100,000	L70 (Hours)
25°C / 77°F	1.00	0.97	0.96	0.95	0.91	408,000
40°C / 104°F	0.99	0.96	0.95	0.94	0.89	356,000

<sup>1</sup> Projected per IESNA TM-21-11 (\* Cree XP-L, 2100mA, 105°C Ts, 6,000hrs)

## LUMINAIRE AMBIENT TEMPERATURE FACTOR (LATF)

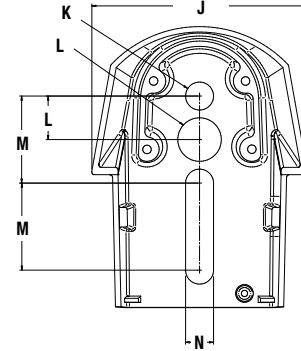
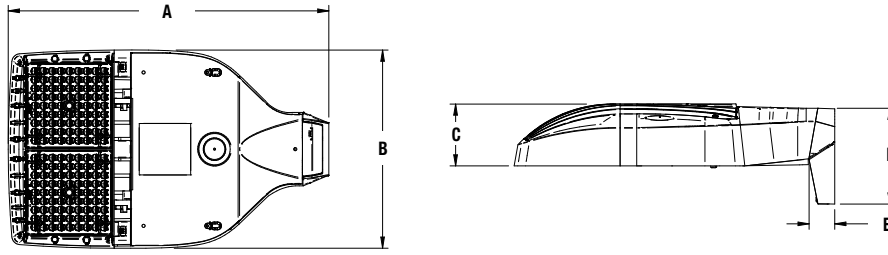
Ambient Temperature		Lumen Multiplier
0° C	32° F	1.06
10° C	50° F	1.03
20° C	68° F	1.01
25° C	77° F	1.00
30° C	86° F	0.99
40° C	104° F	0.97
50° C	122° F	0.94

Use these factors to determine relative lumen output for average ambient temperatures from 0-40°C (32-104°F).

# AIRO Micro Strike

AREA/SITE/ROAD LIGHTER

## DIMENSIONS



ASL1

A	B	C	D	E	ASL1 EPA@0°	ASL1 w/ HSS
18.9"	11.7"	3.7"	5.65"	1.5"	.46 ft. <sup>2</sup>	.73 ft. <sup>2</sup>
480mm	297mm	94mm	144mm	38mm	.14 m <sup>2</sup>	.22 m <sup>2</sup>

Weight

ASL1	14.47 lbs (6.56 kgs)
------	----------------------

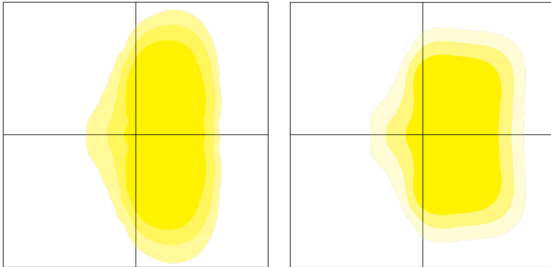
J	K	L	M	N
4.33"	.562"	.875"	1.75"	.562"
480mm	297mm	94mm	610mm	297mm

## PHOTOMETRY

The following diagrams represent the general distribution options offered for this product. For detailed information on specific product configurations, see [website photometric test reports](#).

Type III

Type IV



## PROGRAMMED CONTROLS

ADD-AutoDim Timer Based Options

- Light delay options from 1-9 hours after the light is turned on to dim the light by 10-100%. To return the luminaire to its original light level there are dim return options from 1-9 hours after the light has been dimmed previously.

EX: ADD-6-5-R6

ADD Control Options	Configurations Choices	Example Choice Picked
Auto-Dim Options	1-9 Hours	6
Auto-Dim Brightness	0-9% Brightness	5
Auto-Dim Return	Delay 0-9 Hours	R6

ADT-AutoDim Time of Day Based Option

- Light delay options from 1AM-9PM after the light is turned on to dim the light by 10-100%. To return the luminaire to its original light level there are dim return options from 1AM-9PM after the light has been dimmed previously.

EX: ADT-6-5-R6

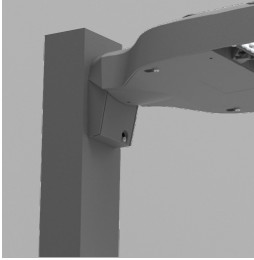
ADD Control Options	Configurations Choices	Example Choice Picked
Auto-Dim Options	12-3 AM and 6-11 PM	6
Auto-Dim Brightness	0-9% Brightness	5
Auto-Dim Return	12-6 AM and 9-11P	R6

# AIRO Micro Strike

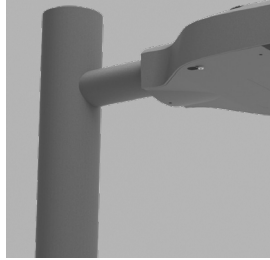
AREA/SITE/ROAD LIGHTER

## ADDITIONAL INFORMATION

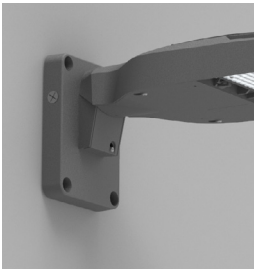
### MOUNTING



**Arm Mount** – Fixture ships with integral arm for ease of installation. Compatible with Hubbell Outdoor S2 drill pattern.

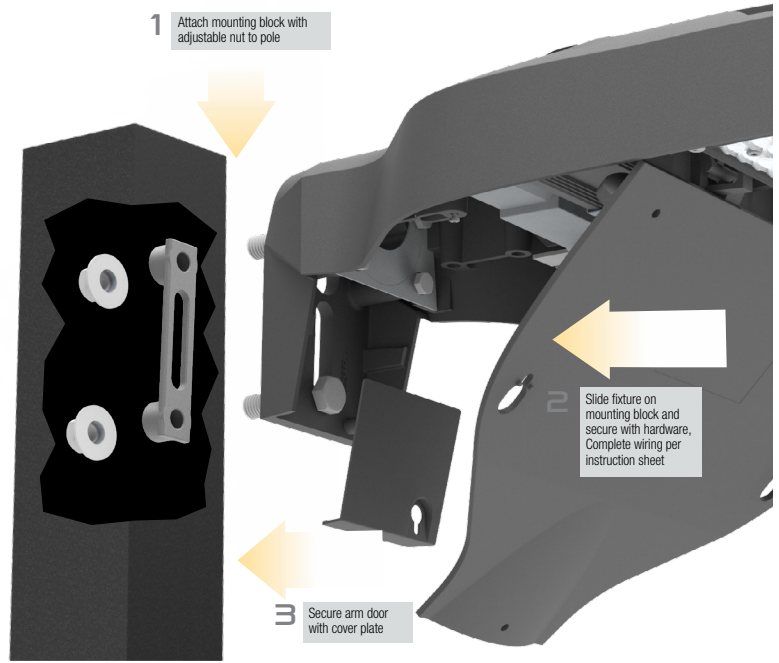


**MAF** – Fits 2-3/8" OD arms Roadway applications.

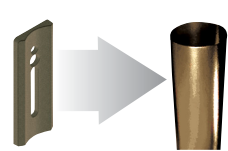


**Wall Mount** – Wall mount bracket designed for building mount applications.

**Universal Mount** – Universal mounting block for ease of installation. Compatible with drill patterns from 2.5" to 4.5"



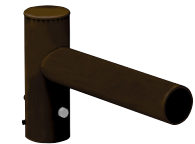
### ACCESSORY



ROUND POLE ADAPTER



WB-AREA-XX



**SPOKE BRACKET** (single arm shown)  
Horizontal round arm tenon adapters for use with MAF mounting type or accessory kit. Reference SH Spoke Pole Top Brackets for ordering information.

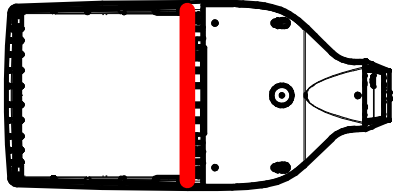
# AIRO Micro Strike

AREA/SITE/ROAD LIGHTER

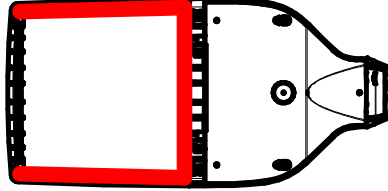
## ADDITIONAL INFORMATION (CONT'D)

### CONFIGURATIONS

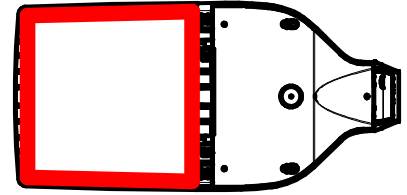
ASLx HSS-90-B-xx



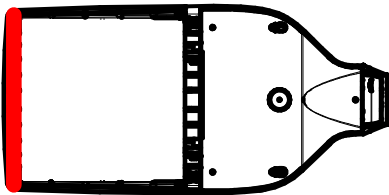
ASLx HSS-270-BSS-xx



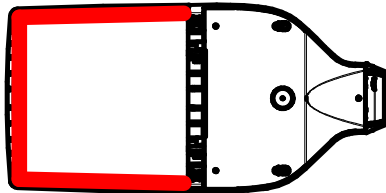
ASLx HSS-360-xx



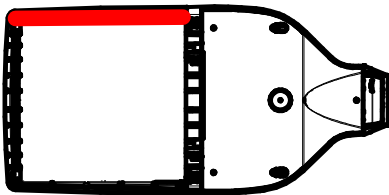
ASLx HSS-90-F-xx



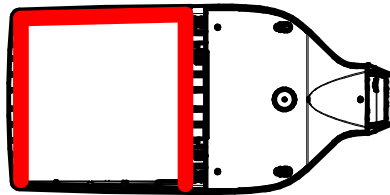
ASLx HSS-270-FSS-xx



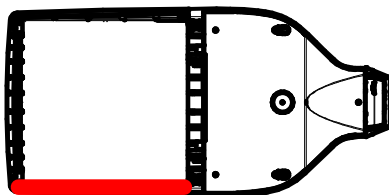
ASLx HSS-90-S-xx



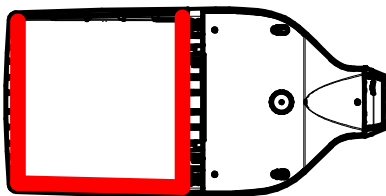
ASLx HSS-270-FSB-xx



ASLx HSS-90-S-xx



ASLx HSS-270-FSB-xx



## USE OF TRADEMARKS AND TRADE NAMES

All product and company names, logos and product identifies are trademarks™ or registered trademarks® of Hubbell Lighting, Inc. or their respective owners. Use of them does not necessarily imply any affiliation with or endorsement by such respective owners.