

2014

DAuto Newsletter

NOVEMBER EDITION



Design engineers turn designs into reality. Without them, a great idea but nothing more than, ... well, a great idea.

Infiniti previews Q60 Concept

Infiniti has announced the Q60 Concept, a premium coupe that will be unveiled to be displayed at the 2015 North American International Auto Show (NAIAS) in Detroit.



The silhouette teaser image shows a silhouetted defined by simple lines: a flowing roofline, a tight, arched shoulder line and muscular wheel arches.

According to Infiniti, “the concept builds upon the design language seen on recent Infiniti concept cars, foreshadowing the strong visual consistency to be a key ingredient of products in the future line up.

ASTON MARTIN creates limited edition DB10



Aston Martin has revealed the first image of the DB10, a limited edition model that will be featured in the latest episode of the James Bond franchise, "Spectre".



Production will be strictly limited to 10 of the bespoke sports cars, developed and built at Aston Martin's Gaydon headquarters.



The DB10 was revealed by Aston Martin and with EON Productions, the producers of the James Bond film franchise, on the 007 stage at Pinewood Studios.

The car has been developed specifically for the film and built in-house by the brand's design and engineering teams. According to Aston Martin, the DB10 gives also a glimpse to the future design direction for the next generation models, as well as demonstrating the company's bespoke department capabilities.

Production Honda/Acura NSX previewed

The first images and details on the production version of the highly anticipated Honda/Acura NSX supercar, successor to the iconic original NSX, that will make its debut at the 2015 North American International Auto Show. The specifications for the production version, due to launch in 2015, include a three-motor, twin-turbocharged Sport Hybrid power unit. "The next-generation NSX will deliver a 'new sports experience' true to its heritage and to the supercar concept that originally gave rise to the name NSX."



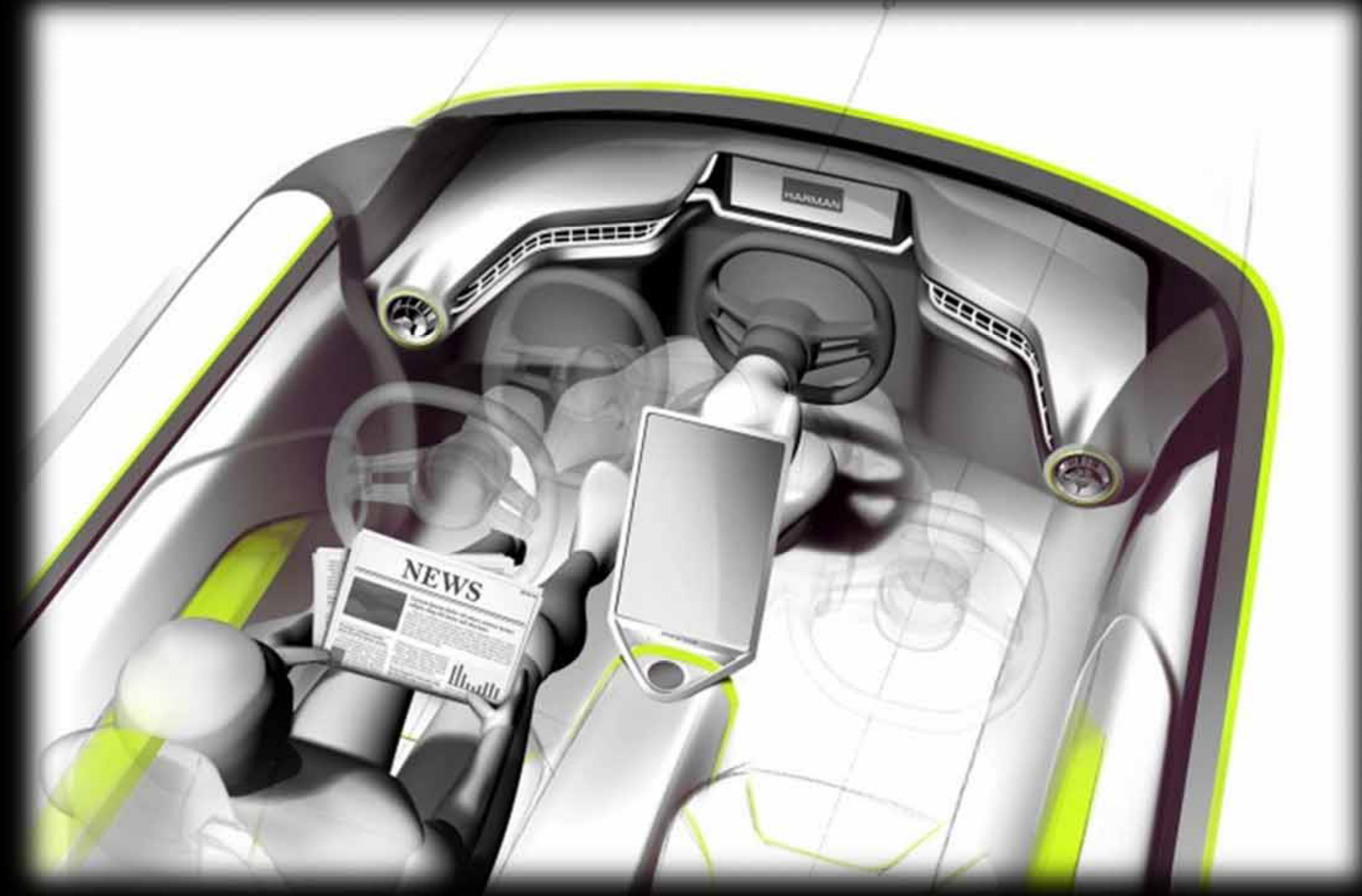
EDAG Light Cocoon Concept preview



The “EDAG Light Cocoon” evolves the idea of the bionically inspired body structure first introduced with the Genesis Concept, a form study that explores the possibilities of additive manufacturing technologies. This vision has been expanded into a full concept vehicle, which adopts a distinctive weatherproof textile outer skin, made of the outdoor textile “Texapore Softshell” developed by outdoor specialists Jack Wolfskin. The skin gives a distinctive look as well as providing the required weather protection. The exterior look is made even more unique by the backlight technology that illuminates the skeleton-like, organic structure beneath the outer skin.



RINSPEED PREVIEWES BUDII CONCEPT



According to Rinspeed's head Frank M. Rinderknecht, autonomous vehicles will not be risk-free, however they will be developed as "learning" machines and as such will keep getting better day after day.

The car for the city and surrounding countryside will handle the often inconvenient daily routine trips independently, while the "pilot" will still be able to take the wheel as usual on fun weekend trips. The ingenious twist: the steering wheel is supported by a state-of-the-art sensitive robot arm, which enables both the driver and the front passenger to steer. And if nobody feels like steering, it is simply parked in center position.

Based on this idea, the Swiss company has developed Budii, an electric car designed to become the driver's "best buddy," an autopilot and a chauffeur that adapts to the habits and preferences of its "boss."

Akrapovič Full Moon Concept

This layout will enable a full five seats cabin package and also will allow to evolve the vehicle into multiple models to offer multiple choices for customers.

Along the concept car, Honda has also presented the Power Exporter Concept, a study for an external power feeding device. The Honda FCV Concept is also equipped with a 70 MPa high-pressure hydrogen storage tank that provides a cruising range of more than 700 km. The tank can be refilled in approximately three minutes, making refueling as quick and easy as today's gasoline vehicles.



The Akrapovič Full Moon Concept has been developed in collaboration with Slovenian Dreamachine Motorcycles



INFINITI PREVEWS VISION GRAN TURISMO CONCEPT

Infiniti has released the first teaser images of its take on the Gran Turismo project. The first is the roof/cockpit layout, which reminds of a tensile structure.



The second element consists of the two character lines that start from the front area of the hood and extend up until the very rear end, tracing an arched profile when seen from the top. In correspondance of the side doors, these bone-lines define a protruding surface that generates an interplay of convex and concave shapes.



It has a concave "fold" in the rear area and is connected to the main body through curved A pillars that "dive into" the air openings on the hood.

Ferrari Sergio: first car delivered

Ferrari has delivered the first Sergio roadster, that is being produced in just six units.

The car was delivered at Abu Dhabi's Yas Marina Circuit, home to the Ferrari World theme park, where the Finali Mondiali Ferrari are being staged and where the company has revealed the FXX K in the past days. Turned into a production reality by Pininfarina itself, the Ferrari Sergio is a radical car for purists, with an emphasis on driving experience and performances. Like for the Sergio Concept, the technical basis is provided by the 458 Spider, which also lends its technological content as well as all of the functional aspects of the cockpit. Power comes from the latest 605 hp version of Ferrari's naturally aspirated 4497 cc V8. This unit also allows the car to sprint from 0 to 100 km/h in just 3 sec.



Compared with the 2013 concept, the Sergio has maintained many of the original design elements, including the overall surface and graphic treatment with the dark inserts on the hood and flanks.

FERRARI SERGIO: FIRST CAR delivered



For production constraints, some of the most distinctive elements of the concept have been left out: these include the low waist line that curved downwards, the minimal deflector that served as windscreen, the floating, aerodynamic headrests suspended from the roll bar and the radical wedge-shaped front section. The Ferrari Sergio has an extremely simple, clear style. Both its volumes and treatments of its surfaces reflect the spirit of Pininfarina's 1960s and 70s creations for Ferrari.

Its proportions have been pushed to the extreme with the front of the car seeming to penetrate the rear which itself projects forward. The result is an exceptionally sculptural, three-dimensional take on the classic roadster.

The two body shell masses are melded together via a longitudinal black insert, the main styling cue of the design. The flank is also characterized by the same black longitudinal element which acts as both a dividing and unifying element between front and rear.



Škoda previews the new Superb



Škoda has revealed the first design sketch of the new Superb, which will change the direction of the brand's design language.

The new Škoda flagship will feature an exterior with lines and shapes derived from the VisionC concept car presented at the 2014 Geneva Motor Show. The look is characterized by clean geometry, tightly contoured surfaces and a sculpted appearance that aims at conveying the impression of a body made from one

single piece.

"The new Superb will make its world debut in Prague in the middle of February."



The dynamic stance is enhanced by the large wheels and the gently rearward-sloping roof line. From the sketch it is clear that the model is the production version of the VisionC: most of the features are maintained, including the distinctive, clean treatment of the back doors with the hidden handles.

Ferrari unveils the 1,050hp FXX K



Ferrari has revealed the first images and information on the FXX K, the research vehicle based on LaFerrari, that will make its debut next weekend at the Yas Marina Circuit in Abu Dhabi.

Free from homologation constraints and racing regulations, the FXX K will never be used in competition. It was developed to be completely uncompromising, incorporating technological innovations that will guarantee an unprecedented driving experience to the exclusive group of Client-Test Drivers with whom the Prancing Horse will roll out a test programme over the coming two years.



The laboratory-car is based on Maranello's first hybrid model. The K in its moniker is a reference to the "KERS" kinetic energy recovery system it adopts in maximizing its track performance.

The car's potential is attested by a total power output of 1050 cv.



MAYBACH



MAYBACH

Maybach-Motorenbau GmbH was founded by Wilhelm Maybach and his son Karl Maybach in 1909, was a German company dedicated to producing engines for Zeppelins and later luxury cars. The Maybach name came back to decorate a car, with production of a new model with two variants - the Maybach 57 and Maybach 62 (these numbers represent the length of the car in feet). Prices for these models range from 400,000 euros to 600,000 euros, due to price compete directly with the finest models from Bentley and Rolls-Royce.

STUDENT'S CORNER

News from DAuto Family



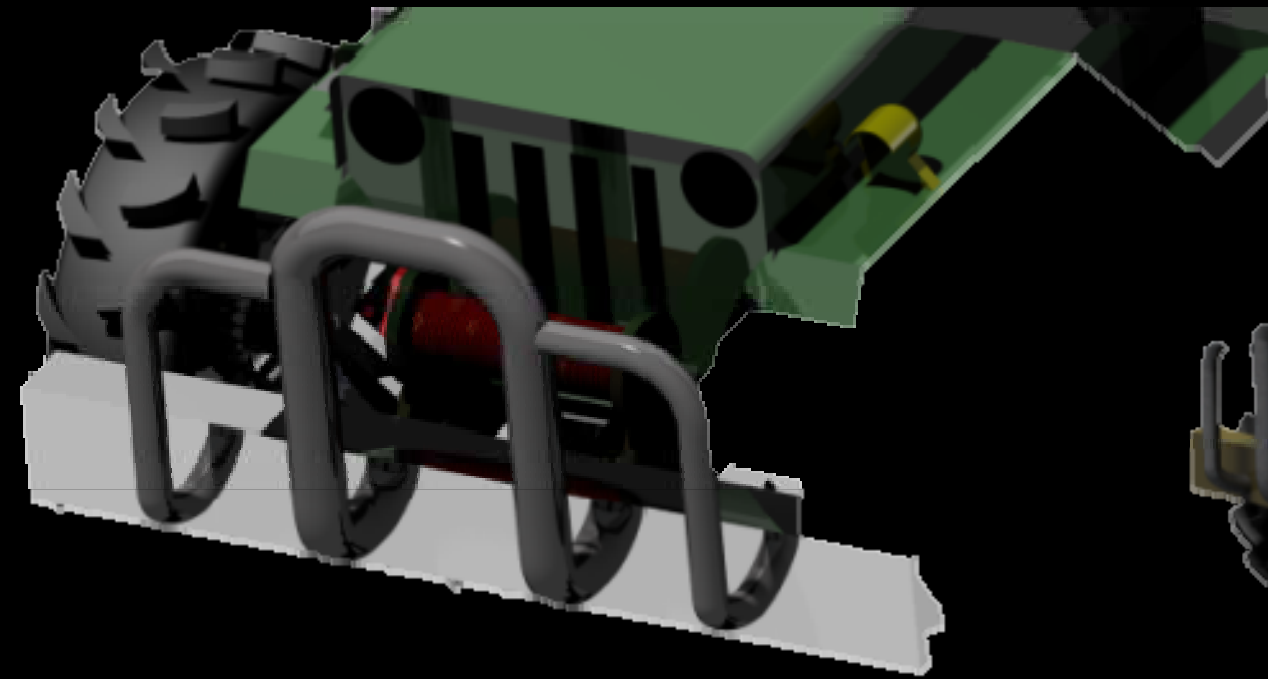
This Design had been created and Presented by Priyanshu Upadhyay (SATI, Vidisha) students of DAuto CAD School during the period of Software Training on Catia V5.

Students of DAuto CAD School during the period of Software Training on Catia V5.

For more info. 18001234011 E-mail us at: training@dauto.co.in

STUDENT'S CORNER

News from DAuto Family



This Jeep has been prepared and envisioned by shahrukh Khan(TIT College, Bhopal) students of DAuto CAD School during the period of Software Training on CATIA V5.

Students of DAuto CAD School during the period of Software Training on CATIA V5.

For more info. 18001234011 E-mail us at: training@dauto.co.in

CONNECT
THROUGH



visit us at www.dauto.co.in

Thanks for reading.