



DECORATIVE
ARCHITECTURAL
CONCRETE
SOLUTIONS



FLOORING • WALLS • COUNTERTOPS	04-17
PRODUCT DEPARTMENT INDEX	18-19
SURFACE PREPARATION PRODUCTS	20-21
SCR, Flash Patch, SCT-EP, Elasto-Shield, Fast Strip Plus, Enviro-Strip, Glue Remove, LD 1800, Retarder, Surface Delay, Deep Patch, SureBond, SC Polymer	
CONCRETE OVERLAY FLOORS	22-27
MicroTek, SureSpray, SureTex, SureBroom, SureBond, SureStamp	
CONCRETE OVERLAY WALLS	28-29
WallSpray, WallStamp	
CONCRETE COLORANTS	30-34
SC Color, VividStain, SureCast, SurePour, SureTique	
SECONDARY COLORING	35-37
Eco Accent, Eco-Stain	
XS BAG MIX KITS	38-41
XS Precast, XS Face, XS Terrazzo, XS Backer	
XS COLORANTS • SEALERS • ACCESSORIES	42-47
XS Color, XS Veining, XS-327, XS PC12, XS Packing, XS Slurry, Foam Rails, Clear Facing Tape, PSA Tape, Edge Profiles	
CLEAR ACRYLIC SEALERS	48-52
HS 200, HS 200LV, HS 300, HS 300LV, Super 30, Super WB, Super 20, CS 250, CS 250LV, CS 125LV	
CLEAR HIGH-PERFORMANCE COATINGS	53-61
How to Choose a Coating, DK 700, DK 400WB, DK 400, DK 120, DK 180, DK 500, DK 600WB, SureFinish, SC Matting Agent, SureGrip	
DK METALLIC • DK FLAKE	62-63
COLORTEC (PIGMENTED) SEALERS & COATINGS	64-69
ColorTec Acrylic's, ColorTec 400WB, ColorTec 600WB, ColorTec 400, ColorTec 180, ColorTec 500, ColorTec Top 30 Colors	



WATER
BASED



SOLVENT
BASED



ECO
FRIENDLY

COLORTEC™

The On Demand Tinting Station is your exclusive source to color high performance sealers and coatings for concrete. Choosing ColorTec means premium pigments, fantastic fade resistance, and incredible hide.



COLORTEC PRODUCT TYPES:

- SOLVENT ACRYLIC
- LOW VOC SOLVENT ACRYLIC
- WATER-BASED ACRYLIC
- SOLVENT POLYURETHANE
- WATER-BASED POLYURETHANE
- POLYASPARTIC
- WATER-BASED EPOXY
- 100% SOLIDS EPOXY



UV STABLE
PH & ALKALINE RESISTANT
FADE RESISTANT



SOLVENT ACRYLIC
pg.64



WB POLYURETHANE
pg.65



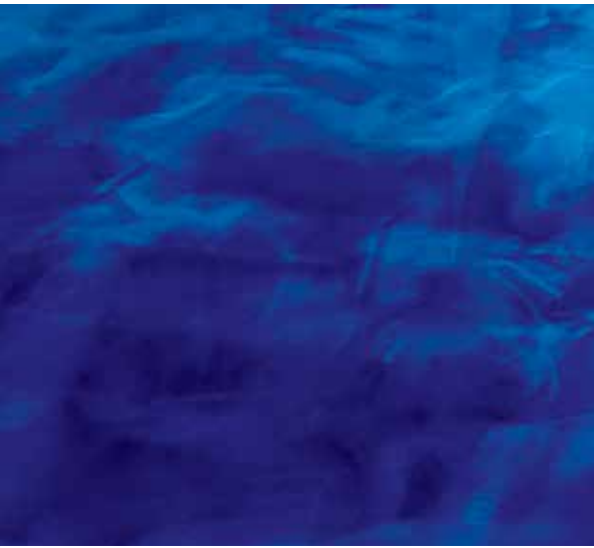
WB EPOXY
pg.65



EPOXY 100%
pg.67

METALLIC FLOORING

High-Performance epoxy metallics are the latest in three-dimensional floor designs. Use of this commercial grade interior system, will create a luxurious, one-of-a-kind floor for residential, retail, and office spaces.





COLORTEC WB EPOXY

pg.65



CLEAR EPOXY 100%

pg.58



DK METALLIC

pg.62



SOLVENT POLYURETHANE

pg.56

FLAKE FLOORING

Slip resistant flooring for interior applications has made decorative Flake Flooring a popular application with endless color designs and rugged longevity. Available in one-day system application as well.





COLORTEC WB EPOXY
pg.65



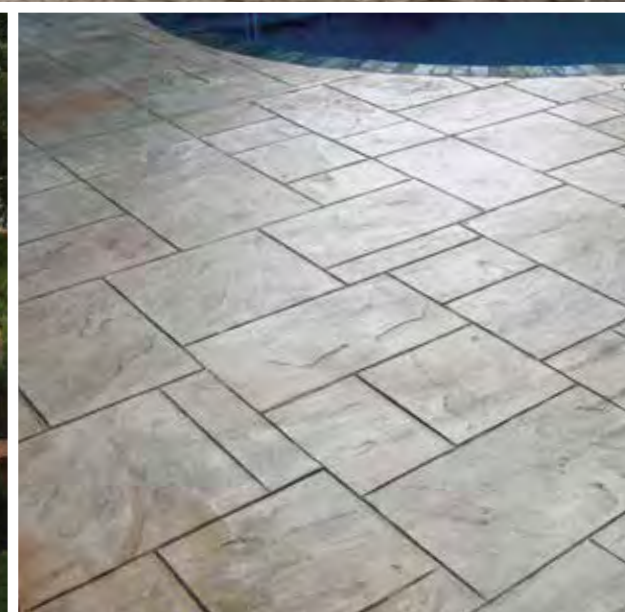
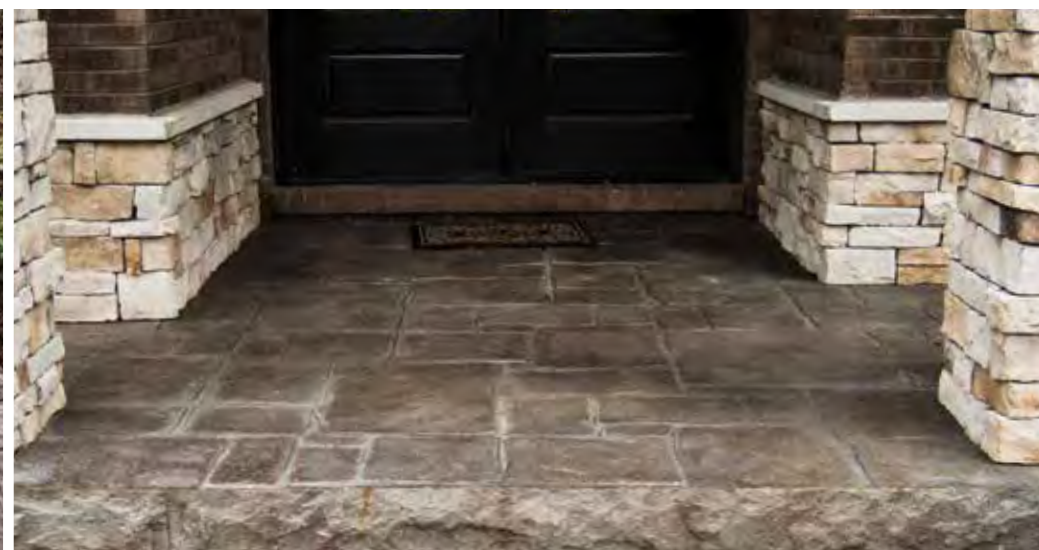
DK FLAKE
pg.63



SOLVENT POLYURETHANE
pg.56

STAMPED CONCRETE

Ability to create endless design and color combinations for fresh poured concrete. Replicate the look of stone, brick, or even wood while increasing durability and strength.





COLOR HARDENER
pg.32

OR



INTEGRAL COLOR
pg.33

+



POWDER RELEASE
pg.34

+



CURE & SEAL
pg.51

THIN OVERLAYS

Create refined textures, colors, and designs for interior and exterior surfaces. Resurfacing concrete flooring is made easier through the use of self-bonding concrete overlays.





MICRO-TOPPING

pg.22



SURESPRAY

pg.23



SURETEX

pg.24



SUREBROOM

pg.25

VERTICAL OVERLAYS

Ability to design a new decorative interior or exterior concrete surface through the use of our thin build and carvable self-bonding overlays.





WALLSPRAY

pg.28



WALLSTAMP

pg.29

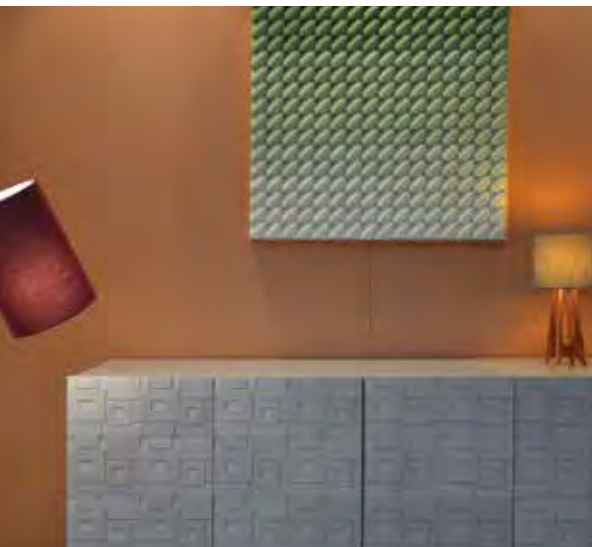


MICRO-TOPPING

pg.22

CUSTOM CASTING

Xtreme Series & D-FRC mix designs will help you bring any color and/or design to life. Craft high-quality, lighter weight concrete: countertops, fireplaces, mantles, furniture, and other architectural elements.





XS PRECAST KIT

pg.38



XS FACE KIT

pg.39



XS TERRAZZO KIT

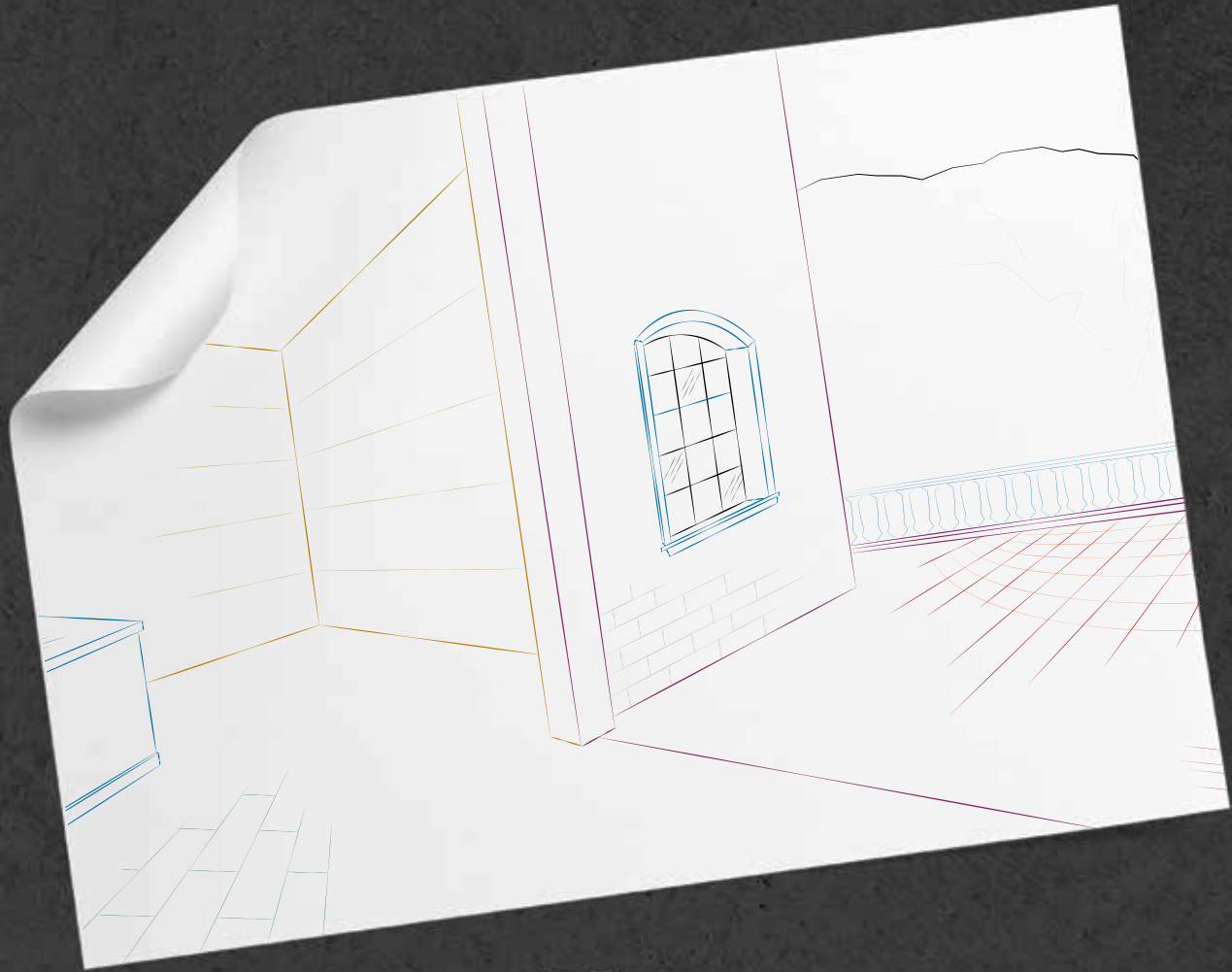
pg.40



XS BACKER KIT

pg.41

"ENDLESS POSSIBILITIES"



FROM ONE SOURCE

**SURFACE
PREPARATION 20-21**

Chemical surface preparation products including cleaners, etchers, mastic remover, cement-based patching products, and crack treatments.

**CONCRETE
OVERLAYS 22-29**

The industry's most complete line of self-bonding, single component, cement-based overlays for interior and exterior applications.

**CONCRETE
COLORANTS 30-34**

High-quality dry pigments, designed to color concrete and concrete overlays. Also includes color hardener, powder release, and reactive acids.

**ECO
COLORANTS 35-37**

This environmentally friendly division is home to the industry's best water-based concrete stain and color wash products.

**XTREME SERIES
PRODUCTS 38-47**

High-performance and high early strength concrete castings mixes, colorants, sealants, and forming products.

**CLEAR SEALERS
& COATINGS 48-63**

Protection products for both interior and exterior concrete surfaces, including Super, HS Series, CS Series, and the high-performance DK Series (Dura-Kote).

**COLORTEC SEALERS
& COATINGS 64-69**

Powered by SureCrete's On-Demand Tint Station, these products utilize fade-resistant pigments designed specifically for use on alkaline surfaces such as concrete.

SURFACE PREPARATION

PRODUCT OPTIONS

SCR™

Super Concrete Renovator combines three products in one: a strong detergent, degreaser, and acid. SCR ensures proper cleaning and etching for concrete overlays, stains and sealers.



FLASH PATCH™

High-strength, concrete patching material that is rapid-setting and self-bonding. Ability to patch up to one inch and down to a feathered finish.



PATCH & PRIME



DEEP PATCH™

Repairs deep voids in concrete from 1/8 inch - 4 inches in thickness.



SUREBOND™

Cement based bonding agent for SureStamp and Deep Patch.



SC POLYMER™

55% solids polymer concentrate used to increase bond strength.

STRIPPERS & REMOVERS



FAST STRIP PLUS™

Aggressive solvent based sealer and coating stripper.



ENVIRO-STRIP™

Citrus based removal of acrylic sealer, heavy grease, and dirt.



GLUE REMOVE™

Softens and aids in removal of mastic, carpet, and VCT adhesives.

LIQUID SURFACE SOLUTIONS



LD 1800™

Lithium based concrete densifier and hardener.



RETARDER

Additive for slowing the cure of concrete overlays in hot weather.



SURFACE DELAY

Topical spray-on membrane to slow the evaporation of moisture.

CRACK TREATMENT & PREVENTION



SCT-EP™

Traditional epoxy and sand based crack filler for concrete.



ELASTO-SHIELD™

Elastomeric membrane for waterproofing and crack prevention.



MICROTEK™

Micro-topping is used to create a new organic canvas on floors, walls, and countertops. Available in 3 formulations: One Coat, Smooth Coat and Rough Coat.



ONE COAT
SMOOTH COAT
ROUGH COAT

SURESPRAY™

The most versatile self-bonding thin overlay.
Designed to resurface and texture interior floors and
exterior concrete surfaces.



EURO STONE
WOOD GRAIN
TRAVERTINE



SURETEX™

Blended with a larger aggregate to allow for an ideal mix design for the use in spray texture finishes, such as knockdown.



KNOCKDOWN
STENCIL PATTERNS
WOOD GRAIN

SUREBROOM™

High compressive strength concrete overlay, formulated for heavy traffic abrasion resistance, without compromising design or texture. Available in white and gray cement mix.



6,000+ PSI
VEHICULAR TRAFFIC
COMMERCIAL GRADE



SUREBOND™

Cement based bonding agent that utilizes dry polymer technology with fine aggregates. Designed to create a premium bond for thick build patches and stampable overlays. To be used with Deep Patch and SureStamp.



**BONDING AGENT
CEMENT BASED
TINTABLE**

SURESTAMP™

Stampable overlayment that is a single component, just-add-water formula. Great for replicating stamped concrete on existing interior or exterior concrete surfaces.



ASHLAR SLATE
OLD GRANITE
COBBLESTONE



WALLSPRAY™

Lightweight, thin, sprayable overlay for use on vertical surfaces as a stucco replacement. WallSpray can be used to create textures such as antique, sand finish, knockdown, and more.



**RECYCLED MATERIAL
STUCCO REPLACEMENT
1/16 - 1/4 INCH THICKNESS**

WALLSTAMP™

Lightweight, vertical, thick build overlay for use when stamping or carving three-dimensional textures. WallStamp can be applied on exterior and interior walls.



**STAMPABLE
CARVABLE**

1/4 - 3 INCH THICKNESS



SC COLOR™

Premeasured UV-stable pigments for use with all of SureCrete's concrete bag mixes for floors and walls. Final color requires color enhancing sealer.



01
ALMOND



02
ANTIQU
WHITE



03
BLUE FOG



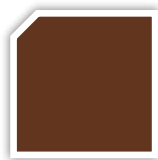
04
BROWN
DERBY



05
CARIBBEAN
CREAM



06
CHARCOAL



07
CHOCOLATE



08
CONCRETE
GRAY



09
CORAL



10
DARK
WALNUT



11
DESERT
SAND



12
DOVE GRAY



13
GRAY



14
GREEN
SLATE



15
IVORY



16
LIMESTONE



17
MAPLE
WOOD



18
MINT



19
NATURAL
WHITE



20
OLD BRICK



21
PUTTY



22
REDWOOD



23
SAND BUFF



24
SILVER



25
SMOKE



26
SPICE



27
SUN BUFF



28
TAUPE



29
TERRA
COTTA



30
TILE RED

VIVID™ STAIN

VIVID™ is a single-component, penetrating, reactive acid stain that produces beautifully variegated, mottled or antiqued-looking concrete surfaces.



AMBER



COFFEE



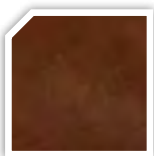
EBONY



JADE



MAHOGANY



MISSION
BROWN



OLIVE



TURQUOISE



WALNUT

**PENETRATING CHEMICAL STAIN
VARIEGATED COLOR
INTERIOR & EXTERIOR USE**



SURECAST™

Color hardener creates stronger concrete and allows for color ranges that cannot be achieved easily through integral coloring. SureCast is a broadcastable dry pigment. Available in a variety of colors.



01
ALMOND



02
ANTIQUÉ
WHITE



04
BROWN
DERBY



10
DARK
WALNUT



12
DOVE
GRAY



13
GRAY



15
IVORY



17
MAPLE
WOOD



20
OLD
BRICK



21
PUTTY



23
SAND
BUFF



24
SILVER



25
SMOKE



27
SUN
BUFF



28
TAUPE



29
TERRA
COTTA



30
TILE
RED

**SHAKE-ON
STRONGER SURFACE
FLOATS IN FAST**

SUREPOUR™

Premeasured, high-quality pigments for the coloring of ready-mix concrete. Each single bag of SurePour has the ability to create three shades of colors from a disintegrating bag packaging.



**1 COLOR MAKES 3
SYNTHETIC IRON OXIDES
READY-MIX COLOR**



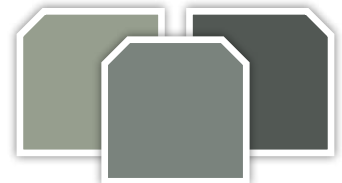
07
CHOCOLATE



73
CARAMEL
BUFF



74
CHESTNUT



81
GUN METAL



85
RED BARN



91
WATERMELON



SURETIQUE™

Colored release agent used to create a secondary color for stamped concrete surfaces. SureTique creates a barrier between the concrete and the stamping tool for the highest quality finish.

**BROADCASTABLE
HYDROPHOBIC PIGMENT
POWDER RELEASE**



03
BLUE FOG



04
BROWN
DERBY



06
CHARCOAL



07
CHOCOLATE



10
DARK
WALNUT



13
GRAY



17
MAPLE
WOOD



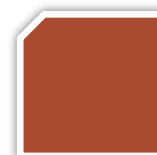
23
SAND BUFF



27
SUN BUFF



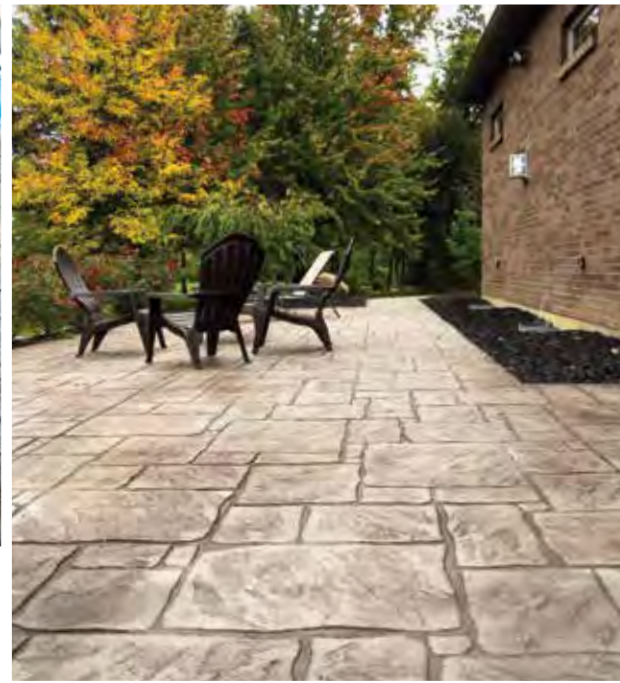
29
TERRA
COTTA



30
TILE RED

ECO ACCENT™

Mixed with water, this dry powder concrete antiquing agent can be used to color wash existing stamped concrete, stamped overlay, and other textures in concrete surfaces.



04
BROWN
DERBY



06
CHARCOAL



07
CHOCOLATE



10
DARK
WALNUT



13
GRAY



17
MAPLE
WOOD



23
SAND
BUFF



24
SILVER



29
TERRA
COTTA



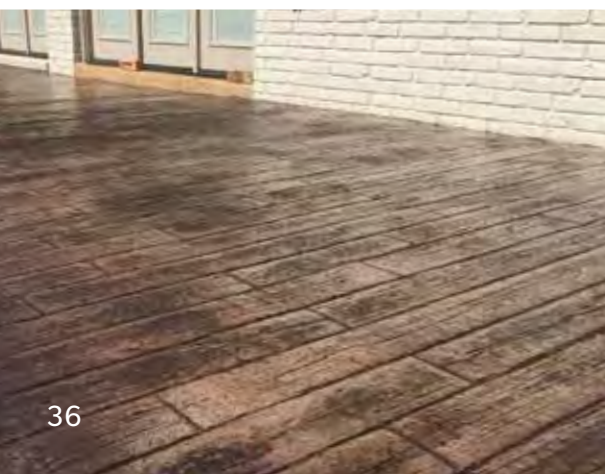
30
TILE
RED

WATER BASED
COLOR WASH
REJUVENATE



ECO STAIN™

This semi-transparent, water-based concrete stain, comes concentrated and can be diluted up to 10:1 to create virtually any color stain desired.





40
ARBOR
GREEN



41
AUTUMN
GOLD



42
AZTEC
GOLD



43
BEECHNUT



44
BERMUDA
BLUE



46
BURNT
CRIMSON



47
COOL
FOREST



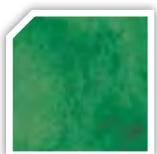
48
DOMINO



49
EPIC
BLUE



50
ESPRESSO



51
FIR GREEN



53
GREEN
OLIVE



54
HARVEST
YELLOW



55
KAYAK



56
KODIAK



57
MAGNET



58
MIDNIGHT
BLUE



59
NAVY
BLUE



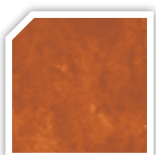
60
OAK



61
ORANGE
BLOSSOM



62
PEWTER



63
RUBY



64
SAFARI
TAN



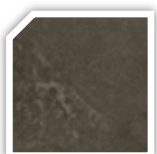
65
SPANISH
RED



29
TERRA
COTTA



67
THAI
GREEN



68
TITANIUM
GRAY



69
WALNUT



70
WHITE



UV-STABLE
NO NEUTRALIZING
CONCENTRATED





XS PRECAST™

A high early strength concrete casting mix that can be used to create textures such as solid color, veining, travertine, pressed, and sandstone.



10,000+ PSI
WHITE & GRAY CEMENT
POUR-ABLE

XS FACE™

This is a sprayable face coat for glass fiber reinforced concrete systems. The use of XS Backer mix is required to complete system.



**GFRC FACE COAT
SPRAYABLE
WHITE & GRAY CEMENT**



XS TERRAZZO™

Terrazzo has a variety of different decorative aggregates that you can add, to create a high early strength concrete casting mix. Intense loading of up to 80 lbs. of aggregate per bag. See PDS for formulas.



**POLISHABLE
DE-MOLD SAME DAY
ADD AGGREGATE**

XS BACKER™

Taking the guess work out of glass fiber concrete mix designs, XS Backer increases tensile and flexural strengths when used with XS PreCast or XS Face. Available in white and gray cement bases.



**AR GLASS FIBER
WHITE & GRAY CEMENT
REINFORCEMENT**



XS COLOR™

This premium, premeasured pigment for Xtreme Series and D-FRC bag mixes. XS Color provides a rich, bold, consistent color palette for concrete casting.



**PREMEASURED
PURE OXIDE PIGMENT
VIBRANT COLOR**



31
BIRCH



32
CANYON
SUNSET



33
CAVERN



36+38
EUCALYPTUS



34
JET BLACK



35
MORNING
CANOPY



36
MOUNTAIN
SHADOW



37
RIVER BED



38
TWILIGHT



39
WHITewater

XS VEINING™

Specially formulated dry color and cement blend for the creation of pigmented veins in poured concrete castings. Can be used with Xtreme Series and D-FRC bag mixes.



**BROADCASTABLE
CEMENT BASED
NATURAL LOOKING**



03
BLUE FOG



06
CHARCOAL



07
CHOCOLATE



11
DESERT
SAND



13
GRAY



14
GREEN
SLATE



17
MAPLE
WOOD



21
PUTTY



22
REDWOOD



23
SAND BUFF



27
SUN BUFF



XS-327™

An exclusive technology delivers the ultimate protection for high performance concrete mixes. This sealer is penetrating, has minimal color enhancement, high heat resistance, is water based, and comes in a semi-gloss or matte finish.



WATER-BASED
SEMI-GLOSS & MATTE
FOOD SAFE



XS-PC12™

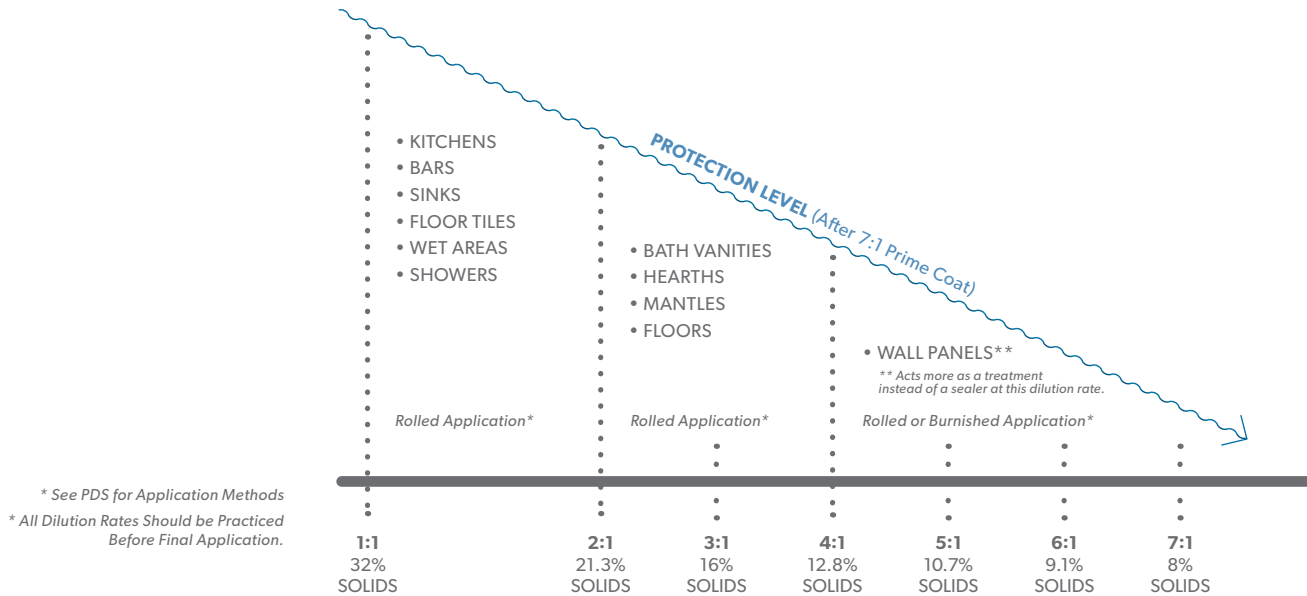
Thin film high-gloss solvent based sealer for a polished sheen without the equipment. XS PC12 is UV-stable, easy to apply, and enhances color. Available in high gloss only.



HIGH GLOSS
COLOR ENHANCING
DRIES FAST



XS-327 SEALER DILUTION RATES



XS BAG MIX MATRIX

XS MATRIX	1/8"	1/4"	3/8"	1/2"	3/4"	1"	1.5"	2"
# of Bags	Sq. Ft.	Sq. Ft.	Sq. Ft.	Sq. Ft.	Sq. Ft.	Sq. Ft.	Sq. Ft.	Sq. Ft.
1	40	20	13	10	6.5	5	3.25	2.75
2	80	40	26	20	13	10	6.5	5.5
3	120	60	39	60	39	15	19.5	8.25
4	160	80	52	40	26	20	13	11
5	200	100	65	50	32.5	25	16.25	13.75
6	240	120	78	60	39	30	19.5	16.5
7	280	140	91	70	45.5	35	22.75	19.25
8	320	160	104	80	52	40	26	22
9	360	180	117	90	58.5	0	29.25	24.75
10	400	200	130	100	65	50	32.5	27.5
11	440	220	143	110	71.5	55	35.75	30.25
12	480	240	156	120	78	60	39	33
13	520	260	169	130	84.5	65	42.25	35.75
14	560	280	182	140	91	70	45.5	38.5
15	600	300	195	150	97.5	75	48.75	41.25

XS PACKING™

Accelerator for thickening Xtreme Series and D-FRC bag mixes to create pressed or sandstone textures.



XS SLURRY™

White cement slurry to fill in voids and pinholes in Xtreme Series castings. Tintable via SC Color or XS Color.



FOAM FORMING SYSTEM



4 FOOT HIGH DENSITY FOAM RAILS

Expedite forming with precut foam rails.
PSA and Clear Facing tape required.
Available in 0.75", 1", 1.5", and 2" profiles.



CLEAR FACING TAPE

Each roll is 100 ft. long. When adhered to the foam rails it eliminates seams and texture from the foam for a smooth finish.
Available in 0.75", 1", 1.5", and 2" profiles.



PSA TAPE

Double-sided 100 ft. pressure-sensitive adhesive that bonds the foam rail to the casting deck. This tape does not wick moisture and will not lose its grip when casting.

EDGE PROFILES



50 LINEAR FOOT MOLD-ABLE EDGE PROFILES

High strength and heat mold-able, these edge profiles deliver a 1.5" profile. Designs include Ogee, Bullnose, Chamfer, and Eased Edge.



HS 200™

Premium 20% solids solvent-based acrylic sealer formulated with attributes of slow-evaporating solvents, silane, and the highest quality blend of acrylic for optimal concrete protection.



< 600 G/L VOC
GREAT FOR RESEAL
1 GALLON = 5 GALLON



HS 200LV™

Premium 20% solids low VOC solvent-based acrylic sealer formulated with attributes of slow-evaporating solvents, silane, and the highest quality blend of acrylic for optimal concrete protection.



< 400 G/L VOC
COLD CLIMATES
1 GALLON = 5 GALLON



HS 300™

Premium 30% solids solvent-based acrylic sealer designed to protect concrete overlays with attributes of slow-evaporating solvents, silane, and the highest quality blend of acrylic for optimal protection.



< 600 G/L VOC
PROTECT OVERLAYS
5 GALLON • 55 GALLON



HS 300LV™

Premium 30% solids low VOC solvent based acrylic sealer designed to protect concrete overlays with attributes of slow-evaporating solvents, silane, and the highest quality blend of acrylic for optimal protection.



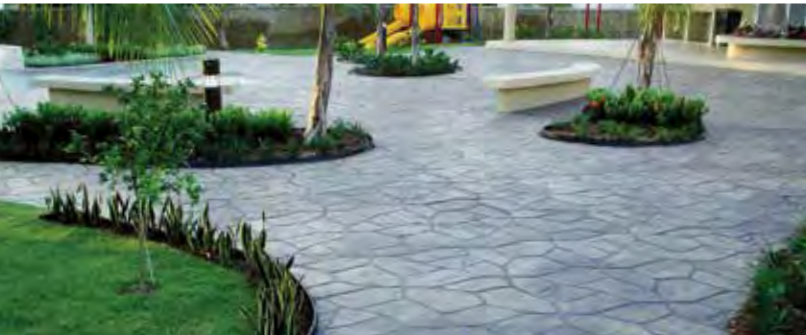
< 400 G/L VOC
FREEZE-THAW
5 GALLON • 55 GALLON





SUPER 30™

Solvent-based, clear acrylic sealer with 30% solids used to seal and protect exterior concrete surfaces in states that can utilize < 600 g/L solvents.



< 600 G/L VOC
COLOR-ENHANCING
5 GALLON = 55 GALLON



SUPER WB™

Environmentally VOC friendly, water-based clear acrylic sealer with 30% solids used outdoors to protect patios and pool decks. Available in Gloss and Low Luster finishes.



< 100 G/L VOC
COLOR-ENHANCING
1 GALLON = 5 GALLON



SUPER 20™

Solvent-based clear acrylic sealer with 20% solids used to seal and reseal decorative concrete surfaces in states that can utilize < 600 g/L solvents.



< 600 G/L VOC
COLOR-ENHANCING
1 GALLON = 5 GALLON



CS 250™

25% solid styrenated acrylic, solvent-based finishing membrane designed to strengthen freshly-poured concrete by managing the cure while also sealing it to protect the surface. < 700 G/L VOC



CURE & SEAL
REDUCE SHRINKAGE
NON-DISSIPATING





CS 250LV™

Low VOC 25% solid, acrylic co-polymer, solvent-based finishing membrane designed to strengthen freshly-poured concrete by managing the cure and sealing it to protect the surface.



< 400 G/L
NON-DISSIPATING
CURE & SEAL



CS 125LV™

12.5% solid, low VOC, acrylic co-polymer, solvent-based finishing membrane designed to strengthen freshly-poured concrete by managing the cure and reducing shrinkage.



< 400 G/L
NON-DISSIPATING
LOW SOLIDS



SELECT THE RIGHT COATING

POLYURETHANE • POLYASPARTIC • EPOXY

The chart below will showcase product attributes to aid you in selecting the right coating.

On projects where vapor transmission is present, the use of DK 700 is advised,
see page 54 for details.

PRODUCT NAME	PRODUCT TYPE	% SOLIDS	BASE TYPE	VOC	AROMA	MOISTURE CURE	HIGH GLOSS	GLOSS	SATIN	UV STABILITY	RECOAT TIME	HEAVY TRAFFIC READY	PAGE NUMBER
							SHEEN						
DK 120	Polyaspartic	66%	Solvent	< 400	Mild		X			Great	2-3 Hours	24-36 Hours	57
DK 180	Polyaspartic	79%	Solvent	< 400	Strong		X			Great	4-6 Hours	24 Hours	57
DK 400	Polyurethane	49%	Solvent	< 400	Strong		X			Excellent	6-8 Hours	72 Hours	56
DK 400WB	Polyurethane	54%	Water	< 50	Zero	X		X	X	Excellent	8-10* Hours	72* Hours	55
DK 600WB	Epoxy	85%	Water	< 50	Mild			X		Fair	8-10 Hours	24 Hours	61
DK 500 E	100% Solids Epoxy	100%	Solvent	< 50	Minimal		X			Poor	7-9 Hours	24* Hours	58-59
DK 500 P	100% Solids Epoxy	100%	Solvent	< 50	Minimal		X			Good	7-9 Hours	24* Hours	58-59
DK 500 PTV	100% Solids Epoxy	100%	Solvent	< 50	Minimal		X			Good	7-9 Hours	24* Hours	58-59

*Environmental conditions can cause the recoat time to vary up to 48 hours. See PDS for instructions.

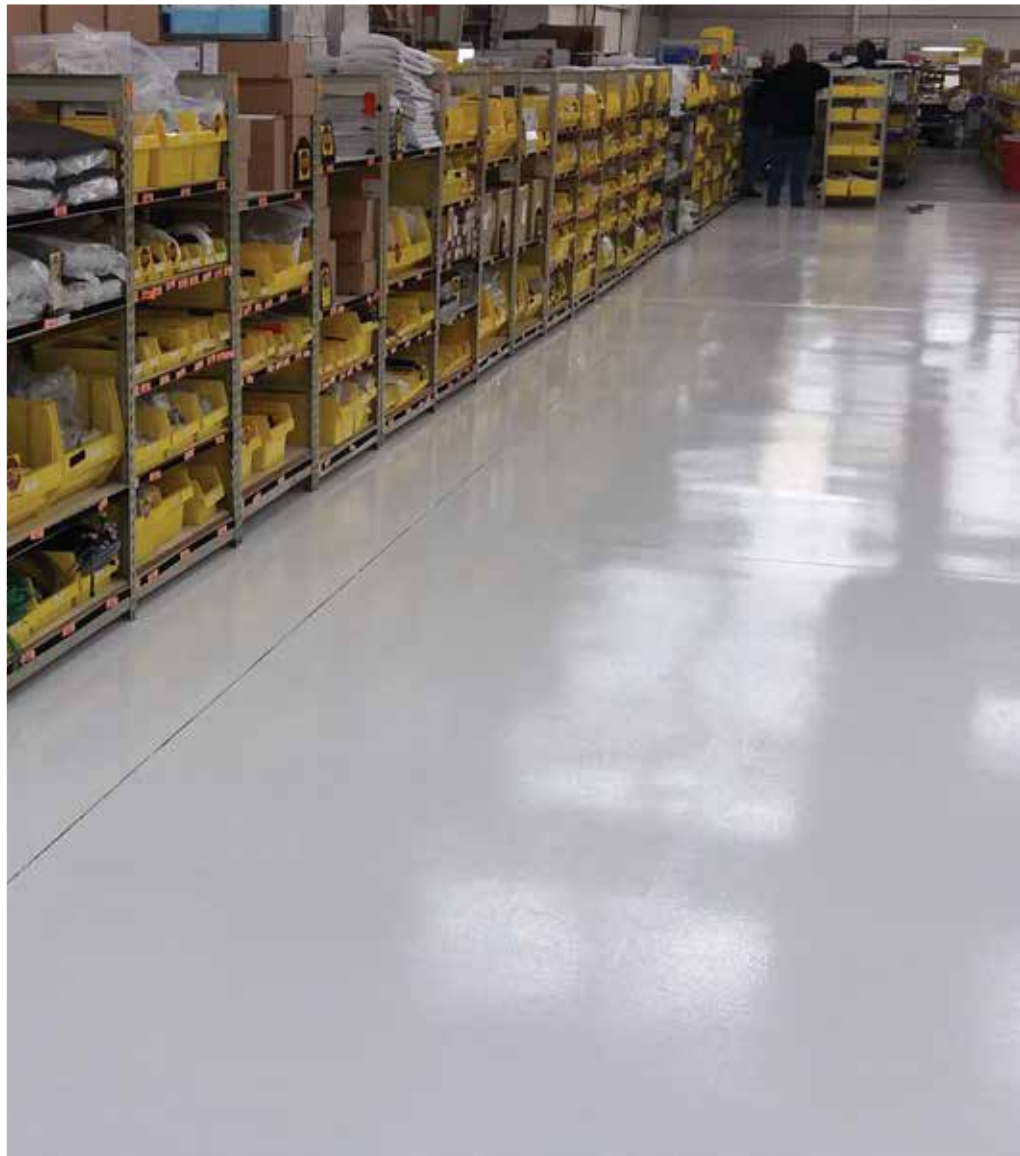
UV Stability Rating Highest to Lowest = Excellent - Great - Fair - Poor

E - P - PTV denotes the curing agent used with the Part A of DK 500. See page 59.

DK 700™



Eliminate unwanted bubbles and pinholes by stopping the moisture vapor transmission from the concrete. DK 700 is a Class 1 moisture mitigation system that creates a topical vapor barrier.



VAPOR BARRIER
DK & COLORTEC COMPATIBLE
EASY ROLLOUT

DK 400WB™

Water-based, dual-component polyurethane clear coating. Excellent UV stability, flexibility, chemical and scratch resistance, with easy recoat properties. Available in gloss and satin sheens.



< 50 G/L VOC

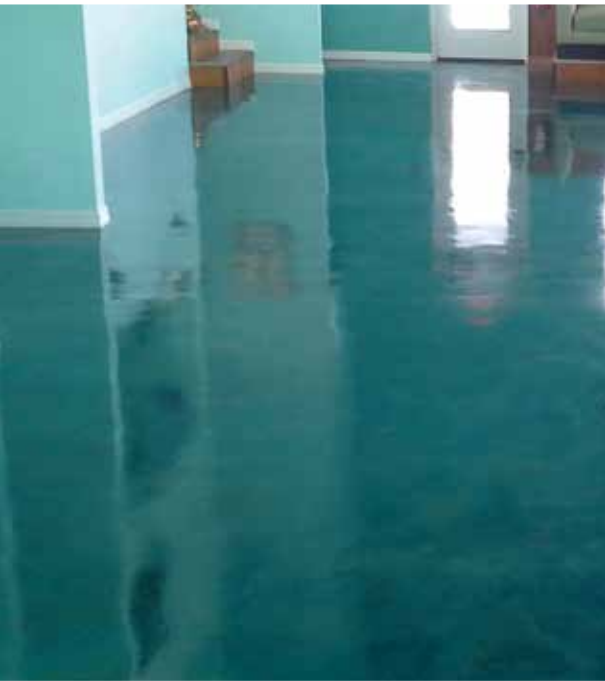
1 GALLON KIT • 4 GALLON KIT

MINIMAL AROMA

DK 400™



Dual-component clear solvent-based polyurethane. DK 400 is high-gloss, non-yellowing coating that delivers superb chemical and scratch resistance, and will enhance colors.



CHEMICAL RESISTANCE
1 GALLON KIT • 5 GALLON KIT
HIGH GLOSS

DK 120™

Solvent-based, high solids, dual-component, thin film, polyaspartic clear coating. Superior gloss finish, color enhancing, fast recoat and cure times for projects on tight schedules.



**THIN FILM
RECOAT IN 2-3 HRS.
HIGH GLOSS**



DK 180™

Solvent-based, high solids, dual-component, polyaspartic clear coating. DK 180 can provide a one-coat application when applied to a surface that has no absorption, such as a DK Flake System.



**HIGH GLOSS
RECOAT IN 4-6 HRS.
THICK BUILD**





DK 500™

Solvent-based, clear epoxy, 100% solids, thick build. Introduce specific attributes by utilizing one of our three available Part B's. DK 500 is the most popular coating for the DK Metallic pigments.



100% SOLIDS
PREMIUM RESINS
SELF-LEVELING

DK 500™

PART B OPTIONS



E

Economy aliphatic amine hardener that delivers a cost-effective clear coat. Susceptible to blushing and yellowing over time.



P

Premium cycloaliphatic amine hardener that increases resistance to impact and chemicals. Will slow blushing, water spotting, and yellowing.



PTV

Premium Thin Viscosity cycloaliphatic amine hardener has all the high performance attributes of the "P" with a more flow-able consistency for DK Metallic.



SUREFINISH™

Quality mop-on coating to enhance sheen and hide wear.
SureFinish is available in a gloss and matte finish.



GLOSS & MATTE
1 GALLON • 5 GALLON

NON-SLIP ADDITIVES



SUREGRIP ADDITIVE™

Polypropylene 300
micron/ 50 mesh
for acrylic sealers.



SUREGRIP HD ADDITIVE™

Polypropylene 840
micron/ 50 mesh
for acrylic sealers.



SUREGRIP BROADCAST™

Aluminum oxide
for use with
acrylic sealers and
coatings.

EPOXY PRIMER



DK 600WB™

Water-based, dual-component, clear epoxy. DK 600WB
can handle a high tolerance of vapor transmission, when
applied as a primer.

SEALER & COATING GLOSS REDUCTION



SC MATTING AGENT™

Dry powder additive for specific sealers
and coatings to reduce sheen. Used in:

- HS 200
- HS 200LV
- HS 300
- HS 300LV
- SUPER 20
- SUPER 30
- DK 400



DK METALLIC™

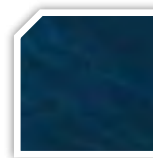
This metallic, pearlescent, dry pigment powder is designed to be mixed into a DK coating to create a three-dimensional finish. The most popular coating to use for this effect is DK 500PTV.



PEARL



ONYX



MIDNIGHT
BLUE



MAHOGANY



GUN METAL



GREAT
WHITE



WINE
RED



SLATE



SEQUOIA



ROYAL BLUE



PEWTER



TOFFEE



COPPER



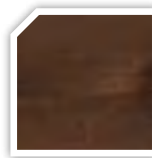
CHARCOAL



CHAMPAGNE



BURNT
ORANGE



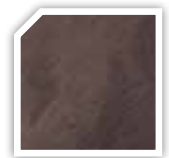
BRONZE



BRASS



BLONDE



BARK
BROWN

**20 COLORS
MIX & MATCH
3-D FINISH**

DK FLAKE™

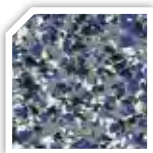
Polymer chip flakes that are pre-blended to be broadcasted into Colortec coatings. Available in 12 multi-color combinations.



**PRE-BLENDED
25 LB. BAGS**



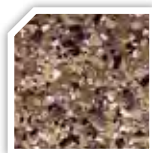
ASPHALT
(Silver Base)



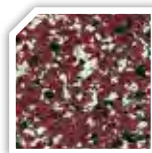
COSMOS
(Silver Base)



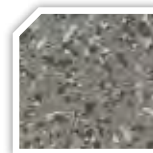
GRAVEL
(Dove Gray Base)



BUCKSKIN
(Antique White Base)



CHIMNEY
(White Base)



NEVADA
(Dove Gray Base)



PRAIRIE
(Antique White Base)



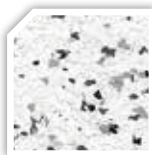
SIERRA
(Antique White Base)



SMOKE
(Dove Gray Base)



DURANGO
(Antique White Base)



SAVANNAH
(White Base)



WRANGLER
(Dove Gray Base)

COLORTEC ACRYLIC™

WITH THE ACRYLIC LINE UP, TWO TINT BASES CAN CREATE OVER 200 COLORS, MAKING EXTERIOR THEMING EASIER THAN EVER BEFORE.



COLORTEC ACRYLIC

Solvent-based, High solid, <600g/L acrylic sealer for exterior concrete surfaces.



COLORTEC ACRYLIC LV

Low VOC solvent-based, High solid, < 400g/L acrylic sealer for exterior concrete surfaces.



COLORTEC ACRYLIC WB

Eco-friendly, water-based, High solid, < 50 g/L acrylic sealer for exterior concrete surfaces.



COLORTEC 400WB™

Pigmented, water-based polyurethane that is dual component and low VOC. Ideally suited for high traffic commercial and manufacturing settings due to its high chemical resistance. Two tint bases can create over 200 colors.



UV-STABLE
INDUSTRIAL USE
HIGH-DURABILITY

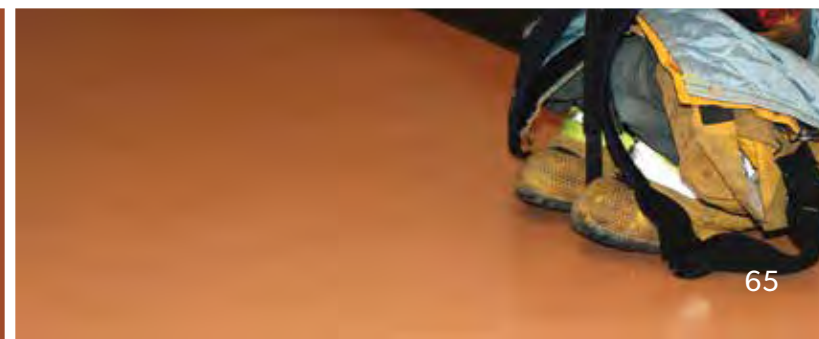


COLORTEC 600WB™

Pigmented, dual-component, water-based epoxy. Used for DK Flake system and as the colored basecoat for metallic flooring. Two tint bases can create over 200 colors.



ECONOMICAL
DK METALLIC PRIMER
WAREHOUSING



COLORTEC 400™



Pigmented, two-component, solvent-based polyurethane. Ideally suited for high traffic in commercial settings, such as manufacturing facilities. Two tint bases can create over 200 colors.



**UV-STABLE
HIGH GLOSS
FORK LIFT TRAFFIC**



COLORTEC 180™



Ideal for one-day flooring systems, this pigmented two-component, solvent-based, polyaspartic is fast cure. Two tint bases can create over 200 colors.



**ONE-DAY FLOORING
THICK BUILD
FAST DRYING**



COLORTEC 500™

Pigmented epoxy, solvent-based, 100% solids, thick build.
Choose one of the three Part-B's to introduce specific attributes to your project.



100% SOLIDS
SELF-LEVELING
INCREASE BRIGHTNESS

COLORTEC 500™

PART B OPTIONS FOR COLORED EPOXY 100% SOLIDS



E

Economy aliphatic amine hardener that delivers a cost-effective clear coat. Susceptible to blushing and yellowing over time.



P

Premium cycloaliphatic amine hardener increases resistance to impact and chemicals. Will slow blushing, water spotting, and yellowing.



PTV

Premium Thin Viscosity cycloaliphatic amine hardener has all the high performance attributes of the "P" with a more flow-able consistency for DK Metallic.

COLORTEC COLOR CHART



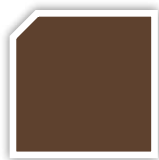
01
ALMOND



02
ANTIQU
WHITE



03
BLUE FOG



04
BROWN
DERBY



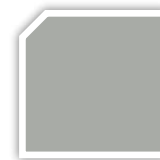
05
CARIBBEAN
CREAM



06
CHARCOAL



07
CHOCOLATE



08
CONCRETE
GRAY



09
CORAL



10
DARK
WALNUT



11
DESERT
SAND



12
DOVE GRAY



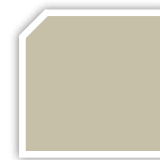
13
GRAY



14
GREEN
SLATE



15
IVORY



16
LIMESTONE



17
MAPLE
WOOD



18
MINT



19
NATURAL
WHITE



20
OLD BRICK



21
PUTTY



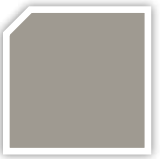
22
REDWOOD



23
SAND BUFF



24
SILVER



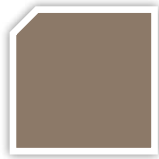
25
SMOKE



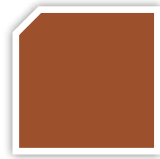
26
SPICE



27
SUN BUFF



28
TAUPE



29
TERRA
COTTA



30
TILE RED

1.352.567.7973
15246 CITRUS COUNTRY DR.
DADE CITY, FL 33523 USA

WWW.SURECRETEDESIGN.COM