



CRUSHER
DEFINING STYLE WITHIN PERFORMANCE

DEFINING STYLE WITHIN PERFORMANCE



THE PERFORMANCE DIVISION OF KURYAKYN
WWW.CRUISERPERFORMANCE.COM

CRUSHER

NO LONGER DO RACETRACKS, TITLES AND CHAMPAGNE SHOWERS STRICTLY DETERMINE PERFORMANCE. A REFINED TASTE IN STYLE, COMMAND OF QUALITY AND APPRECIATION OF TRULY UNIQUE AND FLAWLESS SOUND ARE THE NEW STANDARDS. THESE STANDARDS FORGE OUR CODE OF HONOR. **DEFINING STYLE WITHIN PERFORMANCE.**



MAVERICK SERIES	4
4" SLIP-ONS	6
2.5" SLIP-ONS	14
HEADERS FULL SYSTEMS	18
AIR CLEANERS	28
CAMS	38
FUEL MANAGEMENT	40



THE MAVERICK SERIES

Premium style and performance for instant bragging rights. Potent Maverick exhaust components and heavy-breathing air cleaners generate the power you've been craving. Precision-machined from premium-grade billet aluminum for killer looks, plus sound and performance you'll love when cracking the throttle.



SLIP-ONS



MAVERICK 4" SLIP-ONS FOR TOURING & TRIKE

Command authority. A deep, low roar you'll love at wide-open throttle with lower decibel levels at cruising speeds. Precision-machined billet aluminum tips. High-flow louvered baffles are maintenance-free and never need repacking. Optional Sound Reduction Baffles available, pg 27.

Fits: '95-'15 Electra Glides, Road Glides, Road Kings, Street Glides, Tour Glides & Trikes (except '15 FLRT)

563	Chrome with Black Tips (pr)	\$629.99
564	Black with Black Tips (pr)	\$699.99

Note: Installation on '10 FLHX or FLTRX requires conversion to True Dual or Crusher Dual head pipes and Muffler Support & Grommet, P/N 560, sold separately.







TRIDENT SLIP-ONS FOR TOURING & TRIKE

Big, bold, and 100% badass. Intimidation starts with beefy chrome and black tips that demand notice. Featuring high-performance perforated core baffles with stainless steel packing for added longevity. Mellow slip-ons feature the same performance as the full sound with a toned-down growl that won't rattle the neighbors.

Fits: '95-'15 Electra Glides, Road Glides, Road Kings, Street Glides, Tour Glides & Trikes (except FLRT)

491	Crusher Mufflers with Trident Tips (pr)	\$569.99
505	Crusher Mellow Mufflers with Trident Tips (pr)	\$569.99

Note: Installation on '10 FLHX or FLTRX requires conversion to True Dual or Crusher Dual head pipes and Muffler Support & Grommet, P/N 560, sold separately. Ground clearance is reduced when installed on Trikes.





SLASH SLIP-ONS FOR TOURING & TRIKE

Angled tips flow seamlessly with your bike for irresistible style lines. Available with chrome or satin black tips, and featuring high-performance perforated core baffles with stainless steel packing for added longevity. Mellow slip-ons feature the same performance as the full sound with a toned-down growl that won't rattle the neighbors.

Fits: '95-'15 Electra Glides, Road Glides, Road Kings, Street Glides, Tour Glides & Trikes (except '15 FLRT)

549	Crusher Mufflers with Black Slash Tips (pr)	\$569.99
547	Crusher Mufflers with Chrome Slash Tips (pr)	\$569.99
548	Crusher Mellow Mufflers with Chrome Slash Tips (pr)	\$569.99
550	Crusher Mellow Mufflers with Black Slash Tips (pr)	\$569.99

Note: Installation on '10 FLHX or FLTRX requires conversion to True Dual or Crusher Dual head pipes and Muffler Support & Grommet, P/N 560, sold separately.



SLIP STREAM SLIP-ONS FOR TOURING & TRIKE

New-age power hidden behind a traditional disguise. Available with chrome or satin black tips, and featuring high-performance perforated core baffles with stainless steel packing for added longevity. Mellow slip-ons feature the same performance as the full sound with a toned-down growl that won't rattle the neighbors.

Fits: '95-'15 Electra Glides, Road Glides, Road Kings, Street Glides, Tour Glides & Trikes (except '15 FLRT)

545	Crusher Mufflers with Black Slip Stream Tips (pr)	\$569.99
490	Crusher Mufflers with Chrome Slip Stream Tips (pr)	\$569.99
546	Crusher Mellow Mufflers with Black Slip Stream Tips (pr)	\$569.99
504	Crusher Mellow Mufflers with Chrome Slip Stream Tips (pr)	\$569.99

Note: Installation on '10 FLHX or FLTRX requires conversion to True Dual or Crusher Dual head pipes and Muffler Support & Grommet, P/N 560, sold separately.



MAVERICK 2.5" SLIP-ONS FOR DYNA, SOFTTAIL & SPORTSTER

Featuring precision-machined billet aluminum tips with high-temp black ceramic coating. Maintenance-free high-flow louvered baffles that never need repacking, with optional Sound Reduction Baffles (sold separately) if you want to keep the peace with your neighbors.

- 2.5" diameter with signature Maverick styling
- CNC-Machined billet end caps with high-temp black ceramic coating
- Brushed stainless steel banding featuring embossed Crusher word mark logo
- Chrome or matte black ceramic

FOR DYNA

Fits: '08-'15 FXDF Fat Bob, '09-'10 FXDFSE CVO Fat Bob & '10-'15 FXDWG Dyna Wide Glide

613	Chrome (pr)	\$399.99
614	Black (pr)	\$449.99

Fits: '91-'15 Dyna Models (except '08-'15 FXDF, '09-'10 FXDFSE, '10-'15 FXDWG, '14-'15 FXDL, '12-'15 FLD)

611	Chrome (pr)	\$399.99
612	Black (pr)	\$449.99

FOR SOFTAIL

Fits: '07-'15 FLSTC Heritage Classic, '10-'12 FLSTSE CVO Softail Convertible, '07-'08 FXST Standard, '07-'09 FXSTB Night Train, '07-'10 FXSTC Softail Custom, '13-'15 FXSB Breakout, '08-'11 FXCW/C, '09 FXSTSSE CVO Softail Springer, '13-'14 FXSBSE CVO Breakout

606	Chrome (pr)	\$399.99
-----	-------------	----------

Fits: '07-'15 FLSTF Fat Boy, '10-'15 FLSTFB Fat Boy Lo & '07 FXSTD Deuce

607	Chrome (pr)	\$399.99
608	Black (pr)	\$449.99

Fits: '07-'15 FLSTN Softail Deluxe, '08-'11 FLSTSB Softail Cross Bones & '12-'15 FLS Softail Slim

609	Chrome (pr)	\$399.99
610	Black (pr)	\$449.99

FOR SPORTSTER

Fits: '04-'13 XL Models

615	Chrome (pr)	\$399.99
616	Black (pr)	\$449.99

Fits: '14-'15 XL Models

617	Chrome (pr)	\$399.99
618	Black (pr)	\$449.99



HEADERS | FULL SYSTEMS



DUAL EXHAUST WITH POWER CELL FOR TOURING & TRIKE

Confidence delivered. Our best-performing head pipes with integrated Power Cell crossover enhance performance. Get 2-into-1 results masked by the Smooth Power Cell Heat Shield that lends a flawless flow to your ride. Includes all heat shields and mounting hardware necessary for installation.

Fits: '09-'15 Electra Glides, Road Glides, Road Kings, Street Glides & Trikes

558 Crusher Duals with Power Cell - Smooth Power Cell Heat Shield (set)

\$549.99

Note: '09-'13 Trikes require Exhaust Adapter Kit, P/N 561, sold separately. See page 27.



TRUE DUAL HEAD PIPES FOR TOURING & TRIKE

The total package. Revitalize your engine and heavy-hand the throttle. Bottomless growl with trusted results. Each cylinder breathes through its own header and muffler for enriched airflow and unmatched power. Includes all heat shields and mounting hardware necessary for installation.

Fits: '09-'15 Electra Glides, Road Glides, Road Kings, Street Glides & Trikes

516	True Dual Headers, Chrome (kit)	\$459.99
543	True Dual Headers, Black (kit)	\$519.99

Note: '09-'13 Trikes require Exhaust Adapter Kit, P/N 561, sold separately (pg 27).

Fits: '95-'08 Electra Glides, Road Glides, Road Kings, Street Glides & Tour Glides

513	True Dual Headers, Chrome (kit)	\$459.99
-----	---------------------------------	----------



MAVERICK 2-INTO-2 FULL SYSTEMS FOR DYNA, SOFTAIL & SPORTSTER

Renegade styling for bold bikers. Embossed stainless steel bands and signature precision-machined billet aluminum tips. Deep reverberation, solid power gains and incomparable looks. The Maverick is a must-have for your Dyna, Softail or Sporty. High-flow louvered baffles are maintenance-free and never need repacking. Optional Sound Reduction Baffles available, pg 27.

FOR DYNA

Fits: '06-'15 Dyna Models (except '12-'15 FLD & '14-'15 FXDL)

567	Chrome (set)	\$579.99
568	Black (set)	\$599.99

FOR SOFTAIL

Fits: '86-'15 Softail Models (except '08-'11 FXCW/C, '13-'15 FXSB, '13-'14 FXSBSE)

565	Chrome (set)	\$579.99
566	Black (set)	\$599.99

FOR SPORTSTER

Fits: '04-'15 XL Models

569	Chrome (set)	\$579.99
570	Black (set)	\$599.99





POWER CELL STAGGERED DUAL EXHAUST

Keep the wicked looks of staggered duals with a system that executes like a 2-into-1. Tuned performance and deep, powerful exhaust notes. Optional mellow baffles diminish sound, not performance. Includes full heat shields with billet end caps.

DYNA

Fits: '06-'15 Dyna Models (except '14-'15 FXDL)

562	Crusher Power Cell for Dyna with Chrome Smooth Power Cell Heat Shield and Chrome Tips (set)	\$699.99
-----	---	----------

SOFTAIL

Fits: '86-'15 Softail Models (except '08-'11 FXCW/C, '13-'15 FXSB, '13-14 FXSBSE)

559	Power Cell Staggered Duals for Softail with Chrome Smooth Power Cell Heat Shield and Chrome Tips (set)	\$699.99
-----	--	----------



EXHAUST COMPONENTS

4" SLIP-ON COMPONENTS FOR TOURING & TRIKE

589	Replacement Tip for Maverick 4" Touring Slip-Ons (ea) Fits: Crusher Maverick 4" Slip-On Mufflers	\$84.99
582	Sound Reduction Baffles for Maverick 4" Touring Slip-Ons (pr) Fits: Crusher Maverick 4" Touring Slip-On Mufflers	\$89.99
584	Left Replacement Band with Hardware for Maverick 4" Touring Slip-Ons (ea) Fits: Left Side Crusher Maverick 4" Touring Slip-On	\$39.99
585	Right Replacement Band with Hardware for Maverick 4" Touring Slip-Ons (ea) Fits: Right Side Crusher Maverick 4" Touring Slip-On	\$39.99
581	Replacement Stainless Screws for Maverick Exhaust, 16pk (set)	\$39.99
503	Mellow Baffles for Crusher Mufflers (pr) Fits: Kuryakyn Crusher Mufflers, P/N's 490-491, 504-505 & 545-550	\$149.99

CRUSHER MUFFLER REPLACEMENT COMPONENTS

541	Chrome Slash Tips for Crusher Mufflers (pr) Fits: All Crusher Mufflers for Touring & Trike	\$119.99
542	Black Slash Tips for Crusher Mufflers (pr) Fits: All Crusher Mufflers for Touring & Trike	\$119.99
492	Replacement Trident Tip for Crusher Muffler Fits: Crusher Mufflers with Trident Tip Only, P/N's 491, 499, or 505 (ea)	\$89.99
493	Replacement Slip Stream Tip for Crusher Muffler Fits: Crusher Mufflers with Slip Stream Tip Only, P/N's 490, 498, 504, 545 or 546 (ea)	\$51.99

TORQUE CONES

Here's an inexpensive way to get back some of that lost horsepower and gas mileage without affecting the sound.

Fits: Most 1-3/4" O.D. Twin Cam, Evolution Big Twin and XL Exhaust Systems		
9155	Torque Cones (pr)	\$32.99

EXHAUST BRACKETS & COMPONENTS FOR CRUSHER EXHAUST

Additional brackets, gaskets and components for installation of Crusher exhaust products.

482	Crusher - Cometic Exhaust Port Gaskets (pr) Fits: All Twin Cam, Evo Big Twin & XL Sportster Engines	\$9.99
-----	--	--------

ADAPTER KITS

561	Trike Exhaust Adapter Kit (kit) Fits: Required to Install Crusher Head Pipes, P/N's 488, 516, 517, 543, 558 or 588 on '09-'13 H-D Trikes	\$79.99
-----	---	---------

BUNG PLUGS

540	12mm O2 Sensor Bung Plugs (kit)	\$5.99
509	18mm O2 Sensor Bung Plugs (kit)	\$5.99

SUPPORT BRACKETS

560	Muffler Support Bracket & Rubber Grommet (kit) Fits: '95-'13 Electra Glides, Road Glides, Road Kings, Street Glides, Tour Glides & Trikes (Mounts 1 Muffler)	\$21.99
-----	---	---------

POWER CELL STAGGERED DUAL EXHAUST COMPONENTS

544	Mellow Baffles for Crusher Power Cell Exhaust (pr) Fits: All Crusher Power Cell Staggered Duals for Softail & Dyna	\$79.99
-----	---	---------

MAVERICK 2-INTO-2 FULL SYSTEM + 2.5" SLIP-ON COMPONENTS

FOR DYNA, SOFTAIL & SPORTSTER

Fits: Crusher Maverick 2-Into-2 Systems and 2.5" Slip-Ons

581	Replacement Stainless Screws for Maverick Exhaust (16 pk) (set)	\$29.99
587	Replacement Tip for Maverick 2-Into-2 & 2.5" Slip-Ons (ea)	\$44.99
590	Sound Reduction Baffles for Maverick 2-Into-2 Systems & Slip-Ons (pr)	\$79.99
586	Replacement 2-1/2" Band with Hardware for Maverick Exhaust (ea)	\$39.99

AIR CLEANERS



MAVERICK AIR CLEANER

We've taken the skillful styling found on Maverick Series exhaust components and created a heavy-breathing monster of an intake unit in the form of the Maverick Air Cleaner. Available in Chrome or Black with embossed stainless steel badge featuring the Crusher word mark, the Maverick Air Cleaner can support engine builds in excess of 150 hp, features a Crusher-designed K&N lifetime filter element, and a high-flow curved entry to the throttle body for optimum performance.

FITMENT	CHROME	BLACK
'91-'06 XL Models with CV Carb	9887 \$359.99	9882 \$359.99
'07-'15 XL Models	9888 \$359.99	9883 \$359.99
'93-'99 Evolution Big Twin with CV Carb	9892 \$359.99	9891 \$359.99
'99-'15 Twin Cam with CV Carb or Delphi EFI (except '08-'15 Touring/Trike, '11-'12 FLSTSE, '13-'14 FXSBSE & '14-'15 FLSTNSE)	9889 \$359.99	9884 \$359.99
'08-'15 Electra Glides, Road Glides, Road Kings, Street Glides; Trikes, '11-'12 FLSTSE, '13-'14 FXSBSE, '14-'15 FLSTNSE Note: '11-'13 FLHTCUSE, '14-'15 FLHTKSE, '09 FLTRSE, '11 FLTRUSE, '12-'15 FLTRXSE, '13-'14 FLHRSE, '10-'15 FLHXSE, '11-'12 FLSTSE, '13-'14 FXSBSE & '14-'15 FLSTNSE also require Throttle Body Support Bracket, P/N 9929, sold separately.	9890 \$359.99	9885 \$359.99
Complete Air Cleaner Assembly (Bolt Pattern for CV Carb Delphi). Use with Adapters, Brackets, or Mounting Kits for Custom Applications. Note: Will Bolt directly to stock 40mm or Screamin' Eagle 44mm CV carbs or Delphi throttle bodies. Can be installed on Mikuni HSR42/45/48, S&S E or G Shorty, or other aftermarket carbs by using adapters, sold separately.	9886 \$329.99	9881 \$329.99



VELOCIRAPTOR® AIR CLEANER

Unlike most velocity stacks on the market, the Velociraptor breathes well and filters the air with its K&N washable element. The Super Ring insert covers up the mounting bolts, delivering smooth airflow into your motor.

FITMENT	CHROME	BLACK
'91-'06 XL with CV Carb	9510 \$169.99	9876 \$169.99
'07-'15 XL Models	9872 \$169.99	9877 \$169.99
'93-'99 Evolution Big Twin w/CV Carb	9511 \$169.99	9878 \$169.99
'99-'15 Twin Cam with CV Carb or Delphi EFI (except '08-'15 Touring/Trike, '11-'12 FLSTSE, '13-'14 FXSBSE & '14-'15 FLSTNSE)	9512 \$169.99	9879 \$169.99
'08-'15 Electra Glides, Road Glides, Road Kings, Street Glides & Trikes; '11-'12 FLSTSE, '13-'14 FXSBSE & '14-'15 FLSTNSE	9513 \$169.99	9880 \$169.99
Complete Air Cleaner Assembly (Bolt Pattern for CV Carb/Cable Throttle Delphi). Use with Adapters, Brackets, or Mounting Kits for Custom Applications.	9870 \$139.99	9875 \$139.99

Note: '11-'13 FLHTCUSE, '14-'15 FLHTKSE, '09 FLTRSE, '11 & '15 FLTRUSE, '12-'13 FLTRXSE, '13-'14 FLHRSE, '10-'12 & '15 FLHXSE, '11-'12 FLSTSE, '13-'14 FXSBSE & '14-'15 FLSTNSE also require Throttle Body Support Bracket, P/N 9929, sold separately.



KURYAKYN'S THROTTLE SERVO MOTOR COVER P/N 8659
VISIT KURYAKYN.COM FOR MORE INFORMATION



ALLEY CAT AIR CLEANER

This heavy-breathing kitty can support engine builds in excess of 150hp, features a high-flow parabolic curve entry to the throttle body and hotrod-style knock-off end caps for retro styling. Slim design to minimize legroom interference, and includes lifetime Crusher-designed K&N Filter Element.

FITMENT

	CHROME	BLACK & CHROME
'99-'15 Twin Cam with CV Carb or Delphi EFI (except '08-'15 Touring/Trike, '11-'12 FLSTSE, '13-'14 FXSBSE & '14-'15 FLSTNSE)	9515 \$289.99	9517 \$289.99
'08-'15 Electra Glides, Road Glides, Road Kings, Street Glides & Trikes; '11-'12 FLSTSE, '13-'14 FXSBSE & '14-'15 FLSTNSE	9508 \$289.99	9516 \$289.99
Complete Air Cleaner Assembly (Bolt Pattern for CV Carb/Cable Throttle Delphi). Use with Adapters, Brackets, or Mounting Kits for Custom Applications.	N/A	N/A

Note: '11-'13 FLHTCUSE, '14-'15 FLHTKSE, '09 FLTRSE, '11 & '15 FLTRUSE, '12-'13 FLTRXSE, '13-'14 FLHRSE, '10-'12 & '15 FLHXSE, '11-'12 FLSTSE, '13-'14 FXSBSE & '14-'15 FLSTNSE also require Throttle Body Support Bracket, P/N 9929, sold separately.



MACH 2™ CO-AX

Impress with its beauty and stun with its performance! The Mach 2 Co-Ax can support engine builds over 150hp and features a lifetime Crusher-designed K&N filter element, along with a high-flow parabolic curve entry to throttle body that delivers supreme performance.

FITMENT

	CHROME	BLACK
'91-'06 XL with CV Carb	9567 \$299.99	9573 \$299.99
'07-'15 XL Models	9568 \$299.99	9574 \$299.99
'93-'99 Evolution Big Twin with CV Carb	9569 \$299.99	9575 \$299.99
'99-'15 Twin Cam with CV Carb or Delphi EFI (except '08-'15 Touring/Trike, '11-'12 FLSTSE, '13-'14 FXSBSE & '14-'15 FLSTNSE)	9570 \$299.99	9576 \$299.99
'08-'15 Electra Glides, Road Glides, Road Kings, Street Glides & Trikes; '11-'12 FLSTSE, '13-'14 FXSBSE & '14-'15 FLSTNSE	9571 \$299.99	9577 \$299.99
Complete Air Cleaner Assembly (Bolt Pattern for CV Carb Delphi). Use with Adapters, Brackets, or Mounting Kits for Custom Applications.*	9566 \$269.99	9572 \$269.99

Note: '11-'13 FLHTCUSE, '14-'15 FLHTKSE, '09 FLTRSE, '11 & '15 FLTRUSE, '12-'13 FLTRXSE, '13-'14 FLHRSE, '10-'12, '15 FLHXSE, '11-'12 FLSTSE, '13-'14 FXSBSE & '14-'15 FLSTNSE also require Throttle Body Support Bracket, P/N 9929, sold separately.

*Note: Will Bolt directly to stock 40mm or Screamin' Eagle 44mm CV carbs or Delphi throttle bodies. Can be installed on Mikuni HSR42/45/48, S&S E or G Shorty, or other aftermarket carbs by using adapters, sold separately.



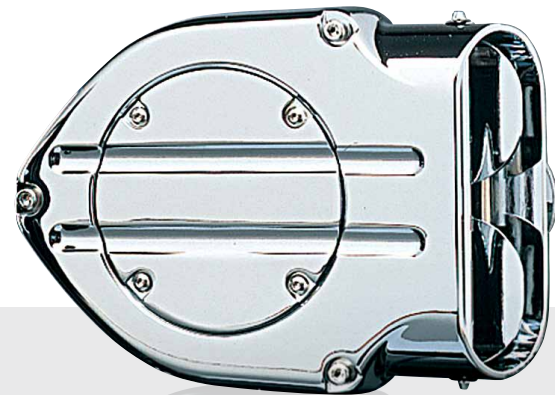
SEE MORE AIR CLEANERS AT CRUSHERPERFORMANCE.COM

Several striking intake options to radically improve airflow for results you can feel. Available in multiple finishes and applications that can support engine builds from 90hp to over 150hp. All air cleaners feature K&N filter elements.



MACH 2™

- Supports engine builds well over 140hp
- Customizable with available themed medallions, mesh inserts and everything in between
- Includes lifetime Crusher-designed K&N filter element
- Two center caps included for personalization options



HYPERCHARGER™

- Can support engine builds up to 90 hp (over 130hp with P/N 8498 Stinger upgrade)
- Multiple color upgrades & configurations
- Vacuum-operated butterflies for precise airflow and old-school hotrod styling
- Lifetime Crusher-designed K&N filter element



PRO-SERIES HYPERCHARGER™

- Can support engine builds up to 120hp
- Smooth one-piece outer cover
- Vacuum operated butterflies for precise airflow & added wow factor
- K&N washable filter element



PRO-R HYPERCHARGER™

- Can support engine builds in excess of 140hp
- Best-performing Hypercharger you can buy
- Airflow is smooth and precise, delivering maximum power
- Comes with all mounting hardware and crankcase breather kits



580

TC-23D BOLT-IN CAMS FOR TWIN CAM

- Performance bolt-in cam designed for great low and mid-range grunt torque for 96's and 103's
- Can be used with stock pushrods (requires removal of fuel tank and rocker boxes)
- Kit includes new inner cam bearings
- Easy on the valve train, no valve spring replacements or head work needed
- To simplify installation, use Crusher Easy Install Pushrods

Fits: '06 Dyna Models, & All '07-'15 Twin Cams

580 Crusher TC-23D Bolt-In Cams (set) \$399.99

GRIND	LIFT (INCHES)	LIFT @ TDC (INCHES)	OPENING (DEGREES)	CLOSING (DEGREES)	DURATION (DEGREES)	LOBE CENTER (DEGREES)
Intake	.548	.153	13	29	222	98
Exhaust	.548	.163	43	15	238	104



579

TC-24D BOLT-IN CAMS FOR TWIN CAM

- The ultimate bolt-in cams for '07-'15 Harley-Davidson Twin Cams
- Really makes the 103's and 110's come to life, works great in 96", too
- Kit includes new inner cam bearings
- Strong bottom end & mid-range with good top-end gains
- Responds well to head work & higher compression (up to 10:1)

Fits: '06 Dyna Models & All '07-'15 Twin Cams (adjustable push rods required)

579 Crusher TC-24D Bolt-In Cams (set) \$399.99

GRIND	LIFT (INCHES)	LIFT @ TDC (INCHES)	OPENING (DEGREES)	CLOSING (DEGREES)	DURATION (DEGREES)	LOBE CENTER (DEGREES)
Intake	.575	.190	20	42	242	101
Exhaust	.547	.150	46	14	240	106



578

TC-25D BOLT-IN CAMS FOR TWIN CAM

- Great low-mid range bolt-in torque cam for 110" Twin Cams
- Can be used with stock pushrods and valve springs
- Easy on the valve train and do not require cylinder head modifications
- Kit includes new inner cam bearings
- Dyno test numbers when run with Crusher exhaust, air cleaner and TTS tuner produced 107 hp and 119 ft. lb. of torque
- To simplify installation, use Crusher Easy Install Pushrods

Fits: '06 Dyna Models, & All '07-'15 Twin Cams

578 Crusher TC-25D Bolt-In Cams (set) \$399.99

GRIND	LIFT (INCHES)	LIFT @ TDC (INCHES)	OPENING (DEGREES)	CLOSING (DEGREES)	DURATION (DEGREES)	LOBE CENTER (DEGREES)
Intake	.560	.184	18	38	236	100
Exhaust	.560	.153	46	14	240	106

EASY INSTALL ADJUSTABLE PUSHRODS FOR TWIN CAM

- Designed for '99-'15 Harley-Davidson Twin Cams
- Works with stock pushrod tubes
- Easy to install; simply cut out stock pushrods
- Does not require removal of the fuel tank or rocker boxes for installation
- Made from high-strength chrome moly steel

Fits: '99-'15 Twin Cams

577 Crusher Easy Install Adjustable Pushrods \$169.99



HIGH PERFORMANCE HYDRAULIC LIFTERS FOR TWIN CAM

- Direct replacements for stock lifters in '99-'15 Harley-Davidson Twin Cams
- Tight tolerances and precision-ground lifter bodies make these a must for doing complete builds or cam swap
- Combine with Crusher Cams and Easy Install Pushrods for a potent package
- Sold in sets of four

Fits: All '99-'15 Twin Cams & '00-'15 XL Models

659 Crusher High Performance Hydraulic Lifters \$134.99

COMETIC® CAM SERVICE GASKET SET

Provides all the gaskets and seals needed when changing a cam (cam cover, push-rod tubes, rocker boxes, etc.)

Fits: '99-'15 Twin Cams

481 Cam Chest Gasket Set (set) \$49.99



FUEL MANAGEMENT

VANCE & HINES FUELPAK FP3

The Fuelpak FP3 will revolutionize fuel management for all new Harley-Davidson models now using the HDLAN (CAN Bus) system. Connecting wirelessly by Bluetooth to iPhone or Android Smartphones, Fuelpak FP3 uses Flash technology to recalibrate engine parameters and mapping for exhaust systems and other performance upgrades. With the Fuelpak FP3 module plugged-in, Live Sensor Data can be viewed through the smartphone to display speed, RPM, cylinder head temperature, voltage, gear selection and other vital information.

Fits: '14-'15 Electra Glides, Road Glides, Road Kings & Street Glides, '14-'15 Trikes; '11-'15 Softails (except '11-'13 CVO Models), '12-'15 Dynas, '14-'15 Sportsters & '14-'15 Streets



230 Vance & Hines Fuelpak FP3 (V&H 66005) (ea) \$389.99

VANCE & HINES FUELPAK

Fine-tune the fuel mixture throughout the entire rpm range with the touch of a button to increase power and improve throttle response. Plugs into the existing harness on the bike with no computer software required, and includes all necessary mounting hardware.



232	Fits: '11-'13 Electra Glides, Road Glides, Road Kings & Street Glides (V&H 61019) (ea)	235	\$289.99
252	Fits: '08-'10 Electra Glides, Road Glides, Road Kings & Street Glides (V&H 61009) (ea)		\$289.99
236	Fits: '02-'07 Electra Glides, Road Glides, Road Kings & Street Glides (V&H #61003A) (ea)		\$289.99
227	Fits: '12-'13 Softail Models (except '12 FLSTSE) & '12-'13 Dyna Models (V&H 61017) (ea)		\$289.99
235	Fits: '01-'06 Fat Boy, '05-'11 Deluxe, '01-'11 Heritage, '01-'03 Heritage Springer, '01-'06 Softail Standard, '01-'06 Night Train, '01-'07 Deuce, '05-'07 Springer Classic (V&H #61001A) (ea)		\$289.99
238	Fits: '07-'11 Softail with 200mm Tire (V&H 61007A) (ea)		\$289.99
279	Fits: '04-'11 Dynas, '02-'11 V-Rods, '09-'11 XR1200, '08-'11 Rockers, '08-'11 Crossbones (V&H #61005B) (ea)		\$289.99
226	Fits: '07-'13 Sportster Models (except XR1200/X) (V&H 61023) (ea)		\$289.99

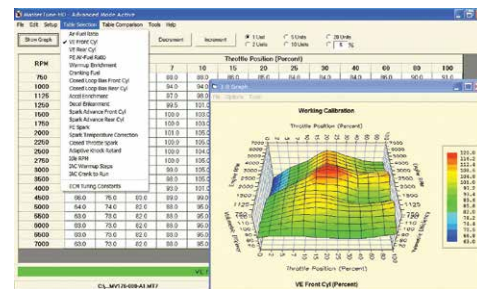
Note: Requires the use of a high-performance air filter.



9230



9225



ONLINE TUTORIALS!

TTS MASTERTUNE

The most powerful tuning tool available for your motorcycles ECM, bar none! Available in two different versions, this one tool contains three powerful programs including Mastertune tuning software, Data Master data acquisition and VTune, a self-tuning software solution. Mastertune has over 20 tables and parameters to optimize your ECM including air-fuel mixture and timing. (Some early year bikes may have fewer tables). The 4-Channel Analog version offers all the same great features of the original along with four 0-8 vdc inputs for devices like EGT probes, AFR meters and such. The unit will fully integrate the 4-channel input information into DataMaster and Flight Recorder programs so it can be graphed or displayed like all other data from the ECM. Not compatible with Apple/Mac.

TTS MASTERTUNE KITS

9226	TTS MasterTune Dual Bike Kit	\$645.99
	Fits: '01-'15 H-D Models with Delphi EFI (kit)	
9225	TTS MasterTune Single Bike Kit	\$445.99
	Fits: '01-'15 H-D Models with Delphi EFI (kit)	
9230	TTS 4-Channel Analog MasterTune Single Bike Kit	\$595.99
	Fits: '01-'15 H-D Models with Delphi EFI (kit)	

USB CABLE KITS

9228	MasterTune USB Cable Kit, 4-Pin for J1850 Delphi	\$42.99
	Fits: For use with TTS MasterTune on '02-'13 Electra Glides, Road Glides, Road Kings & Street Glides; '09-'13 Trikes, '01-'10 Softails, '04-'11 Dynas & '07-'13 Sportsters (kit)	
9227	MasterTune USB Cable Kit, 6-Pin for CAN Softail & Dyna	\$42.99
	Fits: For use with TTS MasterTune on '11-'15 Softails & '12-'15 Dynas (kit)	
9229	MasterTune USB Cable Kit, 6-Pin for CAN Touring	\$42.99
	Fits: For use with TTS MasterTune on '14-'15 Electra Glides, Road Glides, Road Kings, Street Glides, Trikes & Street Models (ea)	
9223	MasterTune USB Cable For Original P/N 9220 TTS (Black Interface) on '01-'13 Delphi Equipped H-D Motorcycles (ea)	\$78.99

Note: The TTS Master Tune does NOT include link cables for tuning. If you install the TTS Master Tune yourself you will need to purchase the appropriate USB Cable Kit for your application. Not compatible with Apple/Mac.



BAHN™

ELEVATING THE CONCEPT OF CUSTOM.



DISTINCT, BOLD STYLING ENGINEERED TO COMPLEMENT RATHER THAN CONSUME THE CHARACTER OF YOUR MOTORCYCLE. QUALITY, PRECISION MACHINED ACCESSORIES CRAFTED TO ENHANCE YOUR OVERALL VISION.
BAHNPRODUCTS.COM

Kuryakyn |

High-quality parts and accessories that won't bust your budget. It's up to you where to start—and there's no better place than with Kuryakyn.

 ALWAYS BE THE FIRST TO WITNESS THE EVER-EVOLVING PRODUCT OFFERINGS AT KURYAKYN.COM/EVOLVE

EMISSIONS NOTICE:

Crusher exhaust systems for non-catalyst equipped motorcycles as well as slip-fit mufflers that mount downstream of catalyts is considered legal replacement parts in California. California does not, however, permit the use of aftermarket exhaust systems that remove original equipment catalyts unless a California Air Resources Board (CARB) Executive Order has been issued.

If you have any questions on sound and emissions regulations, please check with your local laws and regulations. Some Fuel management systems are not legal for street use in California. For systems legal for street use in California, please refer to CARB E.O. No. D-632.

California Emissions Notice

California regulates motorcycle aftermarket parts that have the potential to impact emissions. In most cases, the sale and use of emissions related aftermarket parts on motorcycles is prohibited unless it is either a "replacement part" as defined by California, or is a specifically authorized use of that part as reflected in an Executive Order ("EO Part.")

The California Air Resources Board (ARB) regulates aftermarket parts and has promulgated regulations that essentially place all emissions related aftermarket parts into three categories:

- 1 Replacement Parts**
Replacement Parts are aftermarket parts that ARB considers to be functionally equivalent to the stock part they are intended to replace, and therefore would not impact the emissions from these vehicles. These parts are appropriate for sale and use on motorcycles used on or off the public highways. For aftermarket exhaust systems and parts, there are two applicable scenarios:
 - A** If the motorcycle's stock exhaust system does not contain a catalytic converter, then an aftermarket exhaust part is a replacement part as long as the part does not remove or replace any emission control equipment originally attached to the stock exhaust system, such as oxygen sensors.
 - B** If the motorcycle's stock exhaust system contains a catalytic converter in the manifold section of the stock exhaust system, then an aftermarket muffler positioned downstream from the catalytic converter (i.e. cat-back) is a replacement part as long as the part does not remove or replace any emission control equipment originally attached to the stock exhaust system.
- 2 Executive Order Parts**
Executive Order Parts are aftermarket parts that ARB has evaluated and determined do not adversely impact emissions, and thereby are granted an Executive Order (EO), which allows the part to be sold and used on specified motorcycles. Any aftermarket exhaust system that replaces or otherwise impacts emission control equipment, including catalytic converters, requires an EO to be sold and used on a motorcycle used on or off a public highway.
- 3 Competition Use Only Parts**
Competition Use Only Parts may not be sold or used on a motorcycle that is used on or off the public highways other than those motorcycles used exclusively for competition. Competition Use Only Parts are aftermarket parts that replace or otherwise interfere with the operation of an emission control device, such as a catalytic converter or oxygen sensor, and may be sold and used on a motorcycle that is used only for closed course competition.

CRUSHER PRODUCTS ARE AVAILABLE THROUGH KÜRYAKYN, BIKERS CHOICE & DRAG SPECIALTIES



Küryakyn



DEFINING STYLE WITHIN PERFORMANCE



THE PERFORMANCE DIVISION OF KURYAKYN
WWW.CRUSHERPERFORMANCE.COM



CRUSHER

CRUSHERPERFORMANCE.COM

2015 | 866 295 5759 | 