



DEGREES OF PROGRESS

THE STATE OF HIGHER EDUCATION IN OKLAHOMA



OKLAHOMA STATE REGENTS FOR HIGHER EDUCATION



Chair
Jeffrey W. Hickman
Fairview



Vice Chair
Michael C. Turpen
Oklahoma City



Secretary
Justice Steven W. Taylor
McAlester



Assistant Secretary
Dennis Casey
Morrison



Jay Helm
Tulsa



Ann Holloway
Ardmore



Joseph L. Parker, Jr.
Tulsa



Jack Sherry
Holdenville



Courtney Warmington
Edmond



Chancellor
Glen D. Johnson
Oklahoma City

The Oklahoma State Regents for Higher Education, in compliance with Titles VI and VII of the Civil Rights Act of 1964, Executive Order 11246 as amended, Title IX of the Education Amendments of 1972, Americans with Disabilities Act of 1990 and other federal laws and regulations, do not discriminate on the basis of race, color, national origin, sex, age, religion, handicap or status as a veteran in any of its policies, practices or procedures. This includes, but is not limited to, admissions, employment, financial aid and educational services. This publication, printed by the University of Oklahoma Printing Services, is issued by the State Regents as authorized by 70 O.S. 2001, Section 3206. 225 copies have been printed at a cost of approximately \$3,405. Copies have been deposited with the Publications Clearinghouse of the Oklahoma Department of Libraries. This publication was produced in August 2021.

ROLE OF THE STATE REGENTS



Regent Ann Holloway, 2020-21 Chair

Oklahoma’s constitutional state system of higher education was created in 1941 by a vote of the people. The State Regents fulfill a variety of responsibilities, including prescribing academic standards of higher education, determining functions and courses of study at state colleges and universities, and granting degrees. The State Regents approve allocations for each public college and university, as well as tuition and fees within the limits set by the Oklahoma Legislature, and manage numerous scholarships and special programs.

Additionally, the State Regents operate OneNet, the state’s advanced data network for education and government. The State Regents also manage the Oklahoma College Assistance Program, which provides important college access, financial literacy and student loan default prevention programs and services that support students and the financial aid community.

Although the State Regents are the coordinating board of control for all institutions in the Oklahoma state system of higher education, governing boards of regents and boards of trustees are responsible for the operation and management of each state system institution and higher education program.

Our work continues to implement the bold recommendations of the 2018 Task Force on the Future of Higher Education, which conducted a comprehensive assessment of the productivity, structure and performance of the state system of higher education. The Task Force’s Report on the Future of Higher Education issued a set of unanimously approved strategies to boost innovation, embrace emerging technologies, and implement administrative efficiencies to maximize limited resources throughout the state system.

The State Regents established the System Innovations Committee in July 2020 to research and review each institution’s key performance indicators and evaluate the ways in which Oklahoma’s colleges and universities are adapting to higher education’s changing local and national environment.

Additionally, in 2020, Chancellor Glen D. Johnson was elected to serve on the State Higher Education Executive Officers (SHEEO) Executive Committee and appointed to serve on the American Association of State Colleges and Universities (AASCU) Council of State Representatives. Chancellor Johnson was also honored with Leadership Oklahoma’s Lifetime Achievement Award, which recognizes individuals who have used their leadership abilities to improve the quality of life for Oklahoma’s citizens and its future generations.

As Oklahoma continues the economic recovery process in the wake of the coronavirus pandemic, we remain focused on increasing the number of students earning college degrees and certificates and offering a quality higher education opportunity at an affordable cost.

Ann Holloway, 2020-21 Chair

TABLE OF CONTENTS

Role of the State Regents	3
Higher Education Update.....	4
Strategic Direction.....	6
Higher Education in Oklahoma	9
Affordability.....	9
Enrollment	9
Outcomes	11
Degrees Conferred	12
Academics.....	13
Complete College America	13
Reach Higher.....	13
Endowed Chairs	14
Scholars for Excellence in Child Care	14
Study Abroad	15
Temporary Assistance to Needy Families.....	15
Degree Programs	16
Financial Aid	19
Oklahoma’s Promise	19
Other Financial Aid	20
Student Preparation	22
Economic Development.....	25
Fiscal	29
Revenue	29
Tuition.....	30
College Costs	31
Institutional Highlights.....	32
Cameron University	33
Carl Albert State College	33
Connors State College	34
East Central University.....	34
Eastern Oklahoma State College	35
Langston University.....	35
Murray State College.....	36
Northeastern Oklahoma A&M College	36
Northeastern State University.....	37
Northern Oklahoma College.....	37
Northwestern Oklahoma State University.....	38
Oklahoma City Community College.....	38
Oklahoma Panhandle State University.....	39
Oklahoma State University	39
Redlands Community College	40
Rogers State University.....	40
Rose State College.....	41
Seminole State College.....	41
Southeastern Oklahoma State University.....	42
Southwestern Oklahoma State University	42
Tulsa Community College.....	43
University of Central Oklahoma	43
University of Oklahoma	44
University of Science and Arts of Oklahoma ..	44
Western Oklahoma State College	45
Administrative Organization.....	46

HIGHER EDUCATION UPDATE



Chancellor Glen D. Johnson

Since the onset of the COVID-19 crisis, our public colleges and universities have prioritized the health and safety of our students, faculty, staff and visitors while continuing to offer an exceptional, affordable learning environment. Public higher education has been agile and responsive. In March 2020, our state system institutions transitioned more than 173,000 students from in-person instruction to alternative or online instruction, with limited exceptions for certain labs and practicums. Our institutions added over 4,800 more nurses, doctors and other credentialed allied health professionals to the state's health care workforce during the COVID-19 crisis in spring 2020.

In my capacity as co-chair of the Southern Regional Education Board's Postsecondary Education Recovery Task Force, I appointed four college and university presidents — Oklahoma State University president Burns Hargis, University of Oklahoma president Joe Harroz, Cameron University president

John McArthur, and Rose State College president Jeanie Webb — to represent Oklahoma in the task force's work to address COVID-19-related challenges facing colleges, universities and students across the nation. Acknowledging the impacts of the coronavirus pandemic on student access to standardized testing, such as the ACT and SAT, the State Regents provided for flexibility in public college and university admission requirements, authorizing public colleges and universities to use multiple measures of student performance, such as high school grade point average, high school and concurrent enrollment courses taken, and other criteria, to make admission and placement decisions.

A total appropriation of \$812.8 million has been programmed for public higher education for FY22, which represents a 5.5% increase over the FY21 budget. This \$42.4 million increased appropriation from Gov. Stitt and the Legislature will enable the State Regents to fund several crucial initiatives, including bond authorization and debt service for the Endowed Chairs program and expansion of engineering, STEM, nursing, teacher education and other vital workforce development programs at our public colleges and universities to address Oklahoma's business and industry needs.

The State Regents and our public colleges and universities have long recognized the critical importance of keeping tuition costs as low as possible. We're committed to remaining one of the most affordable higher education systems in the country. In stark contrast to double-digit tuition increases in many other states, tuition and mandatory fees for in-state undergraduate students in Oklahoma increased an average of only 1.3% statewide for the last academic year. Over the last decade, tuition and mandatory fee increases at our public colleges and universities have averaged less than 5% annually. The latest *U.S. News and World Report* rankings show that both Oklahoma tuition and fees and student debt at graduation are 11th-lowest in the nation.

In April 2020, State Regent retired Gen. Toney Stricklin was recognized as a state regent emeritus following a nine-year term on the board. Regent Stricklin consistently advocated for increased state fiscal support for our colleges and universities and has been a tireless champion for military-connected students. His dedication to affordability and access to higher education through programs such as GEAR UP and Oklahoma's Promise has positively benefitted students across the state.

We also launched a new website in April 2020, ShowWhatYouKnowOK.org, targeting students who would like to earn college credit for knowledge gained through work and life experiences, non-degree-granting institutions, military training or other learning environments. The site outlines options for adults who have earned previous college credits and are interested in completing a degree program, those who have attended a career technology center or hold industry-recognized credentials, members or veterans of the armed services who have completed military study and training, and high school graduates looking to use advanced standing scores for college credit. The site also connects users to comprehensive information about financial aid and the State Regents' degree completion initiative for adult learners, Reach Higher.

In May 2020, Gov. Kevin Stitt appointed Morrison resident Dennis Casey and Holdenville resident Jack Sherry to the State Regents. Regent Casey fulfills the unexpired term of State Regent Emeritus Andy Lester, serving through May 2025. Regent Sherry will serve a nine-year term that expires in May 2029, replacing State Regent Emeritus Toney Stricklin.

The National Science Foundation (NSF) awarded a \$20 million grant to an Oklahoma higher education research team in June 2020. The five-year NSF grant, administered by the Established Program to Stimulate Competitive Research (EPSCoR), will support a team of 34 researchers from Oklahoma State University, University of Oklahoma, University of Tulsa, Southwestern Oklahoma State University, Langston University, East Central University and the Noble Research Institute who will develop and test science-based solutions for complex problems at the intersection of land use, water availability and infrastructure. The grant is expected to provide education and workforce development programming to more than 150,000 Oklahomans of all ages.

In August 2020, NSF awarded the State Regents and OneNet a \$232,275 Campus Cyberinfrastructure grant to connect five more institutions to the OneOklahoma Friction Free Network (OFFN). Administered by NSF's Office of Advanced Cyberinfrastructure, the grant program invests in campus-level cyberinfrastructure improvements for science applications and research projects. The two-year grant award connects Oklahoma State University Institute of Technology (Okmulgee), Oklahoma State University-Oklahoma City, Redlands Community College, Oklahoma Christian University and the University of Science and Arts of Oklahoma to the OFFN network. OFFN is a 10 Gbps network ring that provides higher education institutions with a dedicated internet route that is much faster than traditional internet highways. This alternate pathway allows researchers to bypass slower traditional networks and transmit data at higher speeds. Previous NSF Campus Cyberinfrastructure grant awards connected 12 research and regional universities to OFFN.

In September 2020, the State Regents launched a new website, OCOlearnOK.org, targeting Oklahoma campuses, administrators, faculty and staff who aim to improve online education at individual institutions and across the state. The new site consolidates the activities and initiatives of the Online Consortium of Oklahoma (OCO), the Council for Online Learning Excellence and the Oklahoma Quality Matters consortium, offering our colleges and universities access to resources to improve the online education experience and reduce barriers for students as we strive to provide an innovative, coordinated and academically rigorous approach to online learning.

Looking back on public higher education's accomplishments, we have moved the needle to decrease remediation rates by 7.9 percentage points since 2011-12 through assessment and course placement reforms. We have increased degree and certificate completion at public colleges and universities, including an increase in STEM degrees conferred of more than 54% over the last nine years. Participation in the concurrent enrollment program has nearly doubled in the last decade, with more than 14,000 student enrollments in concurrent courses generating nearly 133,000 student credit hours in the last academic year.

This annual report reflects our significant progress as a state system, our continued commitment to excellence and innovation, and our strong partnerships with common education, CareerTech, and the business community to meet Oklahoma's workforce needs. No other entity in state government drives economic growth and strengthens workforce development as directly and comprehensively as public higher education. There is no better investment to move Oklahoma forward in this dynamic, global economy.

Respectfully,



Chancellor Glen D. Johnson

STRATEGIC DIRECTION

MISSION STATEMENT

The mission of the Oklahoma State Regents for Higher Education is to build a nationally competitive system of higher education that will provide educational programs and services universally recognized for excellence, expand frontiers of knowledge and enhance quality of life.

OSRHE PUBLIC AGENDA GOALS

- Increase the number of college graduates.
- Enhance access and improve the quality of public higher education for all Oklahomans.
- Better prepare students to meet the challenges of a global economy.

PRIMARY OBJECTIVES

- Implement Complete College America initiatives to increase the number of degrees and certificates earned in Oklahoma by 67% by 2023.
- Enhance capacity to successfully enroll, retain and graduate students.
- Increase systemwide efficiencies and cost savings.
- Strengthen financial support for Oklahoma college students.
- Improve instructional quality and mathematics success.
- Utilize performance funding to enhance student success and academic quality.
- Target economic development activities to support economic growth.
- Advance access to and quality of technologies to support systemwide programs and services.

KEY INITIATIVES

Task Force on the Future of Higher Education

The State Regents' Task Force on the Future of Higher Education conducted a comprehensive assessment of Oklahoma public higher education, including academic models, online education, structure, fiscal services, operational efficiencies, workforce development, and information technology. After 10 months of study and deliberations, the Task Force unanimously issued a set of comprehensive cost saving, innovative strategies to increase degree completion in our state.

Oklahoma's Promise

Oklahoma's Promise is recognized by many as America's best college access program and is considered a model that combines emphases on academic preparation and financial support for college. In FY 2020, 15,347 students received Oklahoma's Promise scholarships, and over 95,000 students have earned the scholarship since the program's inception.

Concurrent Enrollment

The concurrent enrollment program allows outstanding juniors and seniors to earn college credit while still in high school, which strengthens student preparation, reduces family college costs, and decreases the time required to complete a degree. In the last academic year, there were over 14,000 students enrolled in concurrent courses, generating nearly 133,000 credit hours.

Workforce Development

Oklahoma higher education links academic programs directly to employment needs in the state's wealth-generating ecosystems. Degree and certificate production in critical STEM disciplines has increased 54% over the last nine years, engineering degrees have increased 75% over the last decade, and the number of health professions degrees conferred increased by 4.2% over the previous academic year. Strategic innovations include the development of microcredentials, which provide alternative learning pathways directly aligned with skill requirements identified by business and industry. More than half of Oklahoma's critical occupations require a college degree, and approximately 90% of the highest paid critical occupations require a degree.

OKcollegestart.org

The state's web-based college planning portal for students, families, adult learners and educators empowers students to create individual portfolios, explore career options and campuses, prepare for the ACT and SAT exams, and apply online for Oklahoma's Promise, among other features. Site content is available in multiple languages, and a companion site allows educators to develop system-defined Individual Career Academic Plans (ICAP) and send and receive electronic transcripts.

GEAR UP

Oklahoma GEAR UP (Gaining Early Awareness and Readiness for Undergraduate Programs), the fourth consecutive federally funded grant program administered by the State Regents, is designed to prepare middle and high school students for college success through direct student support services, including college campus tours, ACT preparation and testing, college exploration courses, one-on-one guidance from school specialists, and Oklahoma's Promise and FAFSA completion assistance.

Adult Degree Completion

Two distinct programs are available through Reach Higher, the state system adult degree completion initiative. Through Reach Higher's FlexFinish program, 21 institutions offer flexible class options and enrollment to meet the needs of working adults pursuing a Reach Higher associate or bachelor's degree. Reach Higher: DirectComplete offers comprehensive services and support to adult students returning to pursue degree programs at 14 participating institutions that lead to employment in Oklahoma's critical occupations. A new website, ShowWhatYouKnowOK.org, empowers students to determine how previously earned college credit, licenses, certifications, military training, advanced standing scores, and knowledge gained through other learning experiences can be applied toward a degree program.

Photo courtesy of Oklahoma State University-Oklahoma City



OneNet

OneNet operates Oklahoma's most advanced technology network to provide the infrastructure to support high-speed broadband services at an equitable rate. By leveraging local, national, public and private partnerships, OneNet offers world-class broadband connectivity to institutions that sustain communities and enrich lives. As Oklahoma's research and education network, OneNet provides the technology and connectivity necessary to meet the mission-critical needs of Oklahoma's colleges and universities; K-12 and career technology schools; public libraries; local, tribal, state and federal governments; health care providers; nonprofit organizations; and programs engaged in research. OneNet also operates the Oklahoma Community Anchor Network, which provides vital connectivity to rural communities in 35 Oklahoma counties. Through this high-speed network, OneNet provides the capacity needed to support research, online course delivery, distance learning and telemedicine.

OneNet is a member of Internet2 (I2), the leading research and education network in the country. I2 is part of an exceptional community of U.S. and international leaders in research, academia, industry and government who create and collaborate via innovative technologies. OneNet is also a member of The Quilt, a national coalition of advanced regional networks for research and education, representing 43 networks across the country. Participants in The Quilt provide advanced network services and applications to more than 900 universities and thousands of other research and educational institutions. OneNet's memberships in these two organizations help to accelerate research discovery, advance national and global education, and improve the delivery of public services. Through these memberships and its advanced, high-speed statewide network, OneNet ensures that Oklahoma will remain competitive in research and educational initiatives.

OneNet and higher education institutions across the state are leveraging OneNet's networking investments and infrastructure to interconnect higher education computational facilities. The OneOklahoma Friction Free Network (OFFN) is a dedicated, multi-institutional and research-only pathway for moving research data and expanding access to supercomputing resources. OFFN was funded through a series of grants by the National Science Foundation. The network connects 12 higher education institutions, and OneNet is currently deploying connections to five more colleges and universities. In addition, OneNet has applied for grant funding to connect two more institutions to the network. Researchers utilize the OFFN network to support a wide variety of scientific investigation, including high-energy physics, weather prediction, bioinformatics, biology, physics, pharmaceuticals, genomic, seismic imaging, agriculture, cybersecurity, big data analytics and STEM teaching.

Online Education Task Force

The Online Education Task Force's primary areas of focus are to eliminate barriers to online education, encourage educational innovation while maintaining academic rigor across multiple learning platforms, provide professional development for faculty teaching online, and facilitate access to open educational resources to reduce costs for students. The Online Consortium of Oklahoma, a Task Force initiative, recently launched a website, OCOLearnOK.org, that provides 24/7 access to current resources available through online education initiatives in Oklahoma. Site features include collaboration opportunities in several key areas; new communication tools, including email subscription lists and a calendar of upcoming online professional development opportunities; and an on-demand library of recorded webinars targeting the critical areas necessary to support and engage online learners.

Campus Safety and Security Task Force

The Campus Safety and Security Task Force supports best practices for the ongoing safety of students, faculty, staff and visitors at Oklahoma's public and private institutions and technology centers through targeted training and partnerships with key state agencies, including the Oklahoma Department of Emergency Management and Homeland Security and Oklahoma Department of Mental Health and Substance Abuse Services.

HIGHER EDUCATION IN OKLAHOMA

Higher education is the state's pathway to jobs and prosperity. No entity in state government can help Oklahoma reach its goals of educational excellence and workforce development faster or more comprehensively than public higher education. More college graduates means an increase in our state's per capita income and a stronger state economy.

AFFORDABILITY

Oklahoma continues to be one of the most affordable states when it comes to public higher education. *U.S. News and World Report* recently ranked Oklahoma the 11th-lowest for both tuition and fees and student debt at graduation.

According to the State Regents' 2019-20 Tuition Impact Analysis Report, Oklahoma residents pay an average of \$2,959 less in tuition and mandatory fees at four-year institutions than students do nationally. While student aid received by Oklahoma students in the form of grants and scholarships, on average, covers 44% of the total costs at four-year institutions and 36% of total costs at two-year institutions, nationally, student aid, on average, only covers 27% of the total costs at four-year institutions and 22% of total costs at two-year institutions.

COMPARING UNDERGRADUATE TUITION AND MANDATORY FEES WITH PEER INSTITUTIONS

Tier	FY20 Oklahoma Average	FY20 Peer Average	Percent Less Than Peer Average
Research Universities	\$9,040	\$11,687	22.6%
Regional Universities	\$7,042	\$7,763	9.3%
Community Colleges	\$4,499	\$6,230	27.8%

Source: OSRHE, FY 2019-20 Tuition Impact Analysis Report

ENROLLMENT

Looking at the Numbers

Annual enrollment in Oklahoma's public higher education institutions was 206,147 in 2019-20.¹ Over the last several years, two major economic and demographic trends have impacted higher education enrollment across the nation. In Oklahoma, our economy grew following the last major recession, driving down unemployment rates; Oklahoma saw a drop in the unemployment rate from 6.2% in January 2011 to 3.3% in August 2019.² The drop in unemployment negatively impacted college enrollments, particularly at two-year colleges. Additionally, as demographics in our state have shifted over the last several years, the number of Oklahoma high school students representing demographic groups that have been traditionally underrepresented in higher education has increased, lowering the rate of high school students going to college.

Who Is Enrolled?

During 2019-20 at Oklahoma's public institutions, females made up of 58.7% of the student population, males made up 41.3%. The white population comprised 55.3% of higher education enrollment, while minority enrollments comprised 35.9%. Multiple race and Hispanic populations had the highest percentages amongst minorities with both accounting for 9.5%, followed by 7.1% Native American, 6.5% African American and 3.1% Asian-American.²

The median age of students enrolled at public institutions was 21. Across the public system 68.3% of the student body were age 24 and under, and 17.6% were 30 years of age or older. At research universities, 71.8% of students were 24 or younger, while 15.7% were 30 or older. At regional universities, 64.6% of students were 24 or younger, while 12.5% were 30 or older. At community colleges, 68.25% of students were 24 or younger, while 19.6% were age 30 or older.²

Oklahoma (30,335), Tulsa (28,209), and Cleveland (10,950) counties were the top-three counties of origin for students studying at public institutions in the 2019-20 academic year. Texas, California, Kansas, Arkansas and Missouri were the top-five states of origin for out-of-state students at Oklahoma public institutions.²

Preparation/Remediation

The ACT national assessment, given to thousands of Oklahoma high school students each year, measures knowledge and skills in English, mathematics, reading and science. Students who score below 19 on any of the ACT's subject areas may need to take remedial courses for that subject.

Oklahoma's colleges and universities have incorporated additional college readiness measures, such as students' high school grade point average (GPA) and secondary placement testing, rather than depending solely on standardized test scores. Students with developmental needs can now enroll directly in college-level courses with supplemental supports instead of taking multiple semesters of prerequisite remedial courses. Co-requisite course interventions place students directly into a gateway college-level course with additional academic support.



Photo courtesy of Western Oklahoma State College

In addition to revising assessment and placement policies and practices, Oklahoma's public colleges and universities have created gateway college-level mathematics courses that align to specific degrees of study. These diversified math pathways are aligned with students' intended majors; a student's major or career field is considered in course placement decisions. Students are placed into different college-level mathematics courses based upon what is required or used in their future careers.

Oklahoma now tests 100% of high school graduates with the ACT either during their junior year or senior year. On the national level, the average composite ACT score decreased by one-tenth of a point, while at the state level, the average score dropped by two-tenths of a point. The decrease at the state level may be attributable to expanding the test base to include a student's junior year, making it possible for some students to take the test earlier.

The State Regents offer several programs that help prepare high school students and encourage college attendance, including Oklahoma's Promise, Gaining Early Awareness and Readiness for Undergraduate Programs (GEAR UP), the PreACT, OKcollegestart.org and UCanGo2. These initiatives continue to have a positive impact on college enrollment growth and mitigating the need for remediation.³

Fields of Study

At public institutions, health professions continued to be the most popular field of study during 2019-2020 academic year, with 31,444 students enrolled. Business was second with 28,493 students enrolled, followed by education in third place with 13,495.¹ A chart depicting enrollment in 30 fields of study is available on page 18.

OUTCOMES

In April 2012, the State Regents, in collaboration with institutional presidents, implemented a performance-funding formula that is based upon outcome measures at our colleges and universities. The measures used include retention rates, Complete College America goals, course-completion rates, graduation rates, degree completion and program accreditations. All these measures focus on student success and degree completion.

Student Retention

Retention (persistence) rates for 2019-20 for students who enrolled at the same or another Oklahoma higher education institution the following year increased from 85% in 2010-11 at the research tier to 90.8% in 2019-20. The regional university tier rate decreased from 74.7% to 73.7% over the same period. At the community college tier, the rate also decreased from 64.3% to 63.5% in 2019-20.⁴

Graduation Rates

From 2009-10 to 2020-21, six-year graduation rates (within the state) for new freshmen increased from 64.6% to 69.8% at the research universities, and increased from 35.4% to 40% at the regional universities. At community colleges, three-year graduation rates (within the state) for new freshmen increased from 16.3% to 24.1%.⁴

Photo courtesy of Southwestern Oklahoma State University





Photo courtesy of Northeastern Oklahoma A&M College

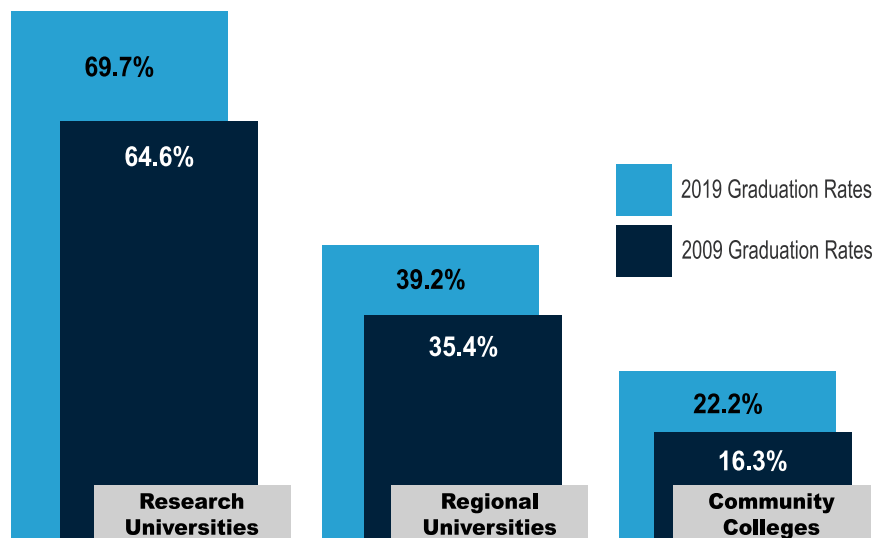
DEGREES CONFERRED

During 2019-20, public institutions granted 36,569 degrees. Of those, 10,368 were associate degrees, and 17,765 were bachelor's degrees. Master's and doctoral degrees totaled 5,988.⁵

The number of degrees and certificates in science, technology, engineering and mathematics (STEM) conferred at state system colleges and universities reached a record high during the last academic year, with 7,382 students receiving degrees and certificates in STEM fields. This increase represents a 55% increase in STEM degrees and certificates over the last 10 years.

COMPLETE COLLEGE AMERICA

Oklahoma's public and private institutions and career technology centers continue working to reach the state's goal of increasing the number of degrees and certificates earned through our Complete College America initiative. Degree and certificate completion has increased by more than 98% of the target benchmark to date.



¹U.S. Census Bureau, American Community Survey, 2017, Table S0101, and 2019 Digest of Education Statistics, Table 304.15, Fall 2018 enrollment

²OSRHE UDS, 2019-20 Annual Headcount Enrollment

³Read more about these programs on pp. 19 and 22-23 of the Annual Report

⁴OSRHE UDS, Full-Time, Degree-Seeking Cohort, as of 2019-20

⁵OSRHE UDS, Degrees Conferred 2019-20

COMPLETE COLLEGE AMERICA

In fall 2011, Oklahoma became a national model for CCA. Oklahoma, along with 34 other states, is working to dramatically increase the number of young adults with a college degree or credential, to set degree goals, and to develop and implement aggressive state- and campus-level action plans to meet those goals.

Established in 2009, CCA provides Oklahoma with tangible and practical support to help implement a range of strategies that will bring needed changes in the culture and practices of its public postsecondary institutions. Oklahoma receives in-depth technical support from America's leading experts on improving college success, including assistance in building consensus for reform and developing policy action plans; guidance on applying for and effectively using federal funding to produce more degrees; and annual networking opportunities.

Five national foundations are providing multi-year support to CCA, including the Carnegie Corporation of New York, the Bill and Melinda Gates Foundation, the Ford Foundation, the W.K. Kellogg Foundation and Lumina Foundation for Education.

REACH HIGHER

Reach Higher, Oklahoma's degree completion program, is approaching its 15th fall of offering classes. The program began in 2007, offering a Bachelor of Science in organizational leadership now offered at seven regional universities.

In 2011, Reach Higher launched an associate degree completion option that offers an Associate in Arts or Associate in Science in enterprise development (general studies or business administration) at 12 community colleges and two technical branch campuses across the state. In 2013, the community colleges added "Reach Higher Endorsed" programs, which are existing associate degrees on each campus that meet the standards of adult-friendly programs that can be completed in flexible formats.

The associate and bachelor's degree programs provide flexible degree completion options for working adults who already have some college credit. Students can earn a college degree while balancing family, work and financial obligations. By building on past college credit, flexible schedules and online classes, students can complete an associate or bachelor's degree in as little as two years. Affordable and convenient evening class times and online courses are offered at all participating institutions.

Reach Higher students study with leading faculty who are full-time professors on campus. Participating institutions in the bachelor's program are Cameron University, Langston University, Northeastern State University, Northwestern Oklahoma State University, Rogers State University, Southwestern Oklahoma State University and the University of Central Oklahoma. Participating institutions in the associate programs are Carl Albert State College, Connors State College, Eastern Oklahoma State College, Murray State College, Northeastern Oklahoma A&M College, Northern Oklahoma College, Oklahoma City Community College, Oklahoma State University Institute of Technology, Oklahoma State University-Oklahoma City, Redlands Community College, Rose State College, Seminole State College, Tulsa Community College and Western Oklahoma State College. As of fall 2020, 10,053 students have received their degrees in the bachelor's and associate programs.

In 2017, the State Regents received a Lumina Foundation grant to support an expansion of the Reach Higher program to focus on critical occupations for Oklahoma's economic development. Both the original program, Reach Higher: FlexFinish, and the new program, Reach Higher: DirectComplete, target adult students who need a limited number of hours to complete a degree program at an Oklahoma institution of higher education. More information about both Reach Higher programs can be found at www.reachhigheroklahoma.org.

ENDOWED CHAIRS

The Endowed Chairs and Distinguished Professorship program provides opportunities for colleges and universities to attract and retain some of the brightest faculty nationally in a wide variety of disciplines. This unique and highly successful program involves a public-private partnership and enhances the overall academic, cultural, scientific and economic development of the institution's local region and the state of Oklahoma as a whole. Students, the community and the state benefit greatly from the presence of these faculty positions as existing academic programs are enhanced, and tremendous energy and innovation emerge from these centers of excellence.

Since inception of the program in 1988, the state has matched 1,008 total accounts at 27 of our institutions. As of Dec. 31, 2020, the institutions had private donations on hand, awaiting state matching funds, of approximately \$161 million.

SCHOLARS FOR EXCELLENCE IN CHILD CARE

The State Regents, Oklahoma Department of Human Services, and seven of the state system's community colleges and Oklahoma State University-Oklahoma City have partnered to provide formal educational opportunities for child care professionals in licensed child care facilities. Since the 2000 inception of the Scholars program (through summer 2020), 443 child care professionals have obtained a Child Development Associate (CDA) credential through earning college credit hours, 483 have obtained a CDA credential through completing the technology center Pathway to Your National Credential program, 3,865 have received Certificates of Mastery, and 1,206 have earned associate degrees in child development or early childhood education. Additionally, 416 Director's Certificates of Completion have been awarded, along with 32 bachelor's degrees.

Photo courtesy of Seminole State College



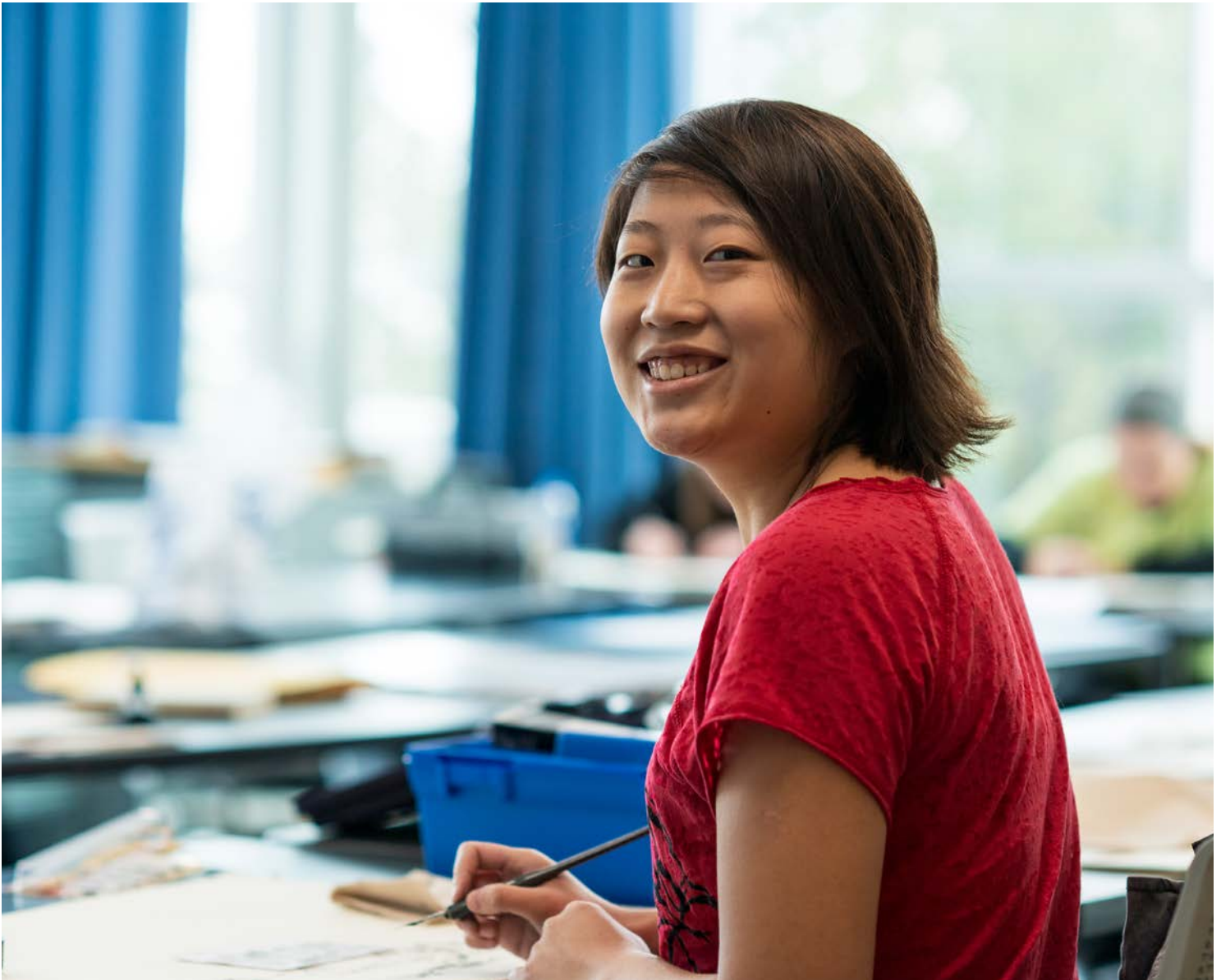


Photo courtesy of Tulsa Community College

STUDY ABROAD

Oklahoma Study Abroad is a statewide initiative to create a clearinghouse of information for students looking for study-abroad programs offered in the state. All programs in the clearinghouse are linked to information from the respective institutions that are offering the study-abroad opportunities. The user-friendly database at www.okhighered.org/sa allows students and other interested constituents to sort the programs by various categories, such as discipline, institution and country.

TEMPORARY ASSISTANCE TO NEEDY FAMILIES

A Temporary Assistance for Needy Families (TANF) program is located at 10 of the state's community colleges, at a total of 18 sites, as well as Oklahoma State University Institute of Technology and Oklahoma State University-Oklahoma City. The purpose of the program is to provide vocational education and employment services. Program participants are TANF clients referred by the Oklahoma Department of Human Services (DHS) county offices. The programs were developed and implemented on a statewide basis in fall 1996 and are funded through a contract between the State Regents and DHS. During 2019-20, approximately 298 TANF recipients participated in the program.

DEGREE PROGRAMS

New Programs

The State Regents have the constitutional authority to prescribe standards of higher education applicable to each institution and to determine functions and courses of study, but they also recognize the primary role of institution faculty, administrators and governing boards in initiating and recommending needed changes in educational curriculum. Administrators and governing boards review proposed programs, considering the institution's priorities, while the State Regents provide the system perspective. The State Regents consider the statewide capacity for each new program request, link academic planning with resources and ensure that requests and mandates are consistently applied.

Seventy-two new degree and certificate programs were added during FY 2020. An additional 48 programs are under review.

NEW PROGRAMS APPROVED DURING 2019-20

Research Universities

Oklahoma State University

- Certificate in Learning and Motivation
- Doctor of Philosophy in Petroleum Engineering
- Graduate Certificate in Dietetics
- Graduate Certificate in Effective Teaching in Elementary Schools
- Graduate Certificate in Environmental Science with Regulatory Certification
- Graduate Certificate in K-12 STEM Educator
- Graduate Certificate in Sport Communication
- Master of Engineering in Mechanical and Aerospace Engineering
- Master of Science in Dietetics

Oklahoma State University Center for Health Sciences

- Graduate Certificate in Health Care Administration
- Graduate Certificate in Health Care Administration-Finance
- Graduate Certificate in Health Care Administration-Global Health

Oklahoma State University – Tulsa

- Certificate in Undergraduate Research
- Graduate Certificate in Brand Communication
- Graduate Certificate in Special Education

University of Oklahoma

- Certificate in Criminal Investigation and Intelligence Analysis
- Certificate in Engineering Leadership
- Certificate in Restorative Justice
- Executive Master of Business Administration in Aerospace and Defense
- Graduate Certificate in Criminal Justice Administration
- Graduate Certificate in Drug Policy Management
- Graduate Certificate in Executive Management in Aerospace/Defense
- Graduate Certificate in Learning Design and Technology
- Master of Arts in Human Resources
- Master of Clinical Mental Health Counseling in Clinical Mental Health Counseling

University of Oklahoma Health Sciences Center

- Graduate Certificate in Clinical and Translational Science
- Master of Arts in Nutritional Sciences

University of Oklahoma – Tulsa

- Bachelor of Science in Computer Science
- Bachelor of Science in Information Science and Technology

NEW PROGRAMS APPROVED DURING 2019-20

Regional Universities

East Central University

- Certificate in Mass Communication (Social Media Marketing)
- Master of Arts in Criminal Justice Administration

Northeastern State University

- Certificate in Business Analytics (Tahlequah, Broken Arrow)
- Certificate in Healthcare Administration Leadership
- Certificate in Human Resources Management (Tahlequah, Broken Arrow)
- Certificate in International Business (Tahlequah, Broken Arrow)
- Certificate in Operations Leadership
- Graduate Certificate in Administrative Leadership in Nursing
- Graduate Certificate in American Indian Leadership
- Graduate Certificate in Classroom Teaching
- Graduate Certificate in Data Analytics
- Graduate Certificate of Higher Education Administration

- Graduate Certificate of Leadership
- Graduate Certificate in Nursing Education
- Graduate Certificate in Nursing Informatics
- Graduate Certificate of Training and Development

Northwestern Oklahoma State University

- Master of Arts in Heritage Tourism and Conservation

Rogers State University

- Bachelor of Science in Allied Health Sciences
- Master of Science in Community Counseling

University of Central Oklahoma

- Graduate Certificate in Food Quality and Safety
- Master of Public Health in Community Engagement

Community Colleges

Murray State College

- Associate in Applied Science in Manufacturing Technology
- Associate in Science in Health Science
- Certificate in Basic Accounting
- Certificate in Business Leadership
- Certificate in Hospitality
- Certificate in Retail

Rose State College

- Certificate in Aerospace Technology
- Certificate in Electronics Technology
- Certificate in Emergency Management and Cybersecurity
- Certificate in Manufacturing Technology
- Certificate in Mechanical Technology
- Certificate in Quality Assurance Technology
- Certificate in Supply Chain Management Logistics

Tulsa Community College

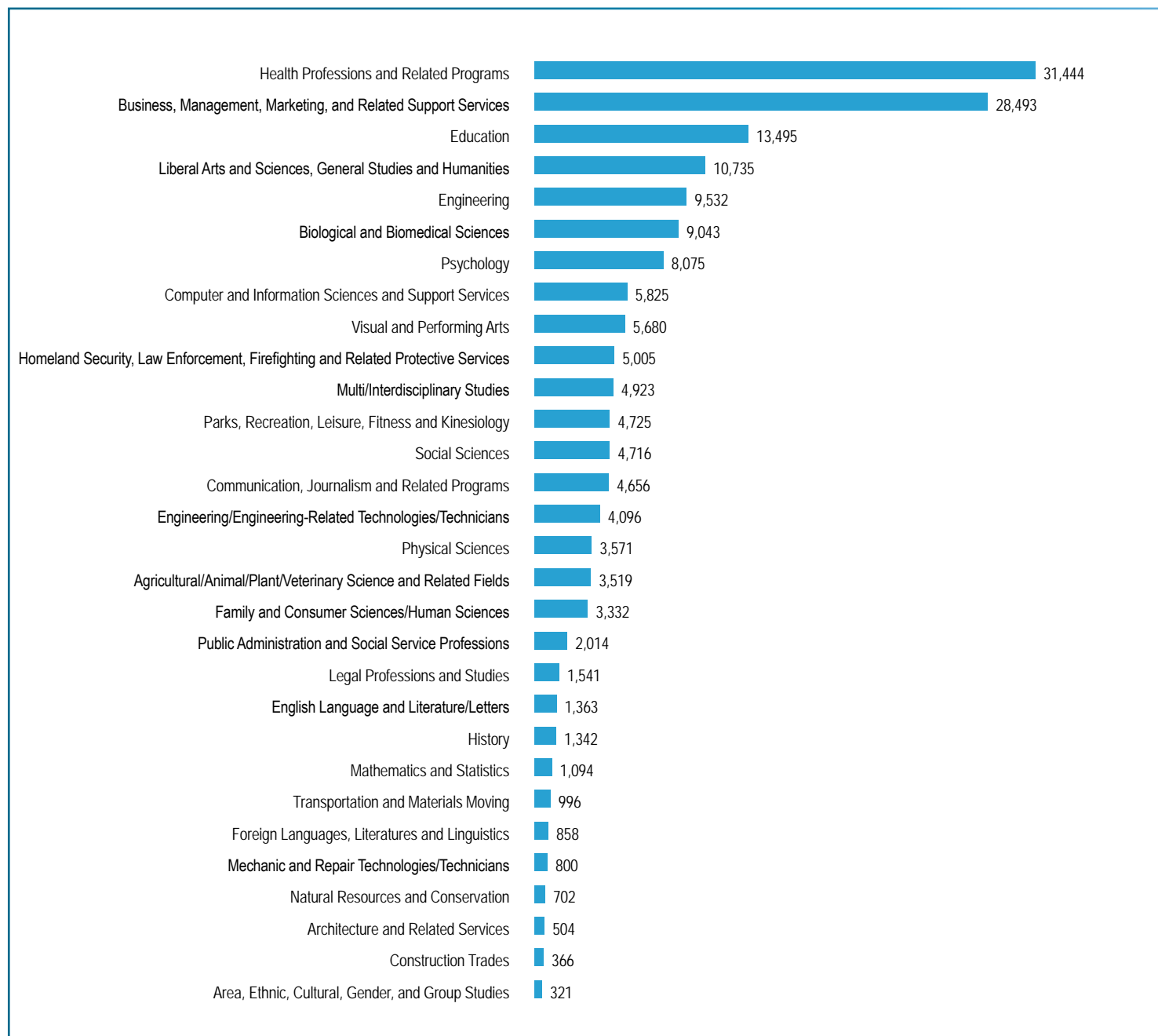
- Associate in Applied Science in Applied Technology
- Certificate in Aerospace Drafting and Design
- Certificate in AutoCAD Professional
- Certificate in Commercial Pilot
- Certificate in Flight Instructor
- Certificate in Industrial Maintenance Technician
- Certificate in Manufacturing Production Technician I
- Certificate in Private Pilot
- Certificate in Quality and Inspection Technician I



Photo courtesy of Redlands Community College

Source: OSRHE, September 2020, Annual Report on the Status of Program Requests

2019-20 ANNUAL UNDUPLICATED STUDENT HEADCOUNT ENROLLMENTS FOR THE MOST POPULAR FIELDS OF STUDY IN PUBLIC INSTITUTIONS



Source: OSRHE UDS, 2/11/21

Most Popular Degrees

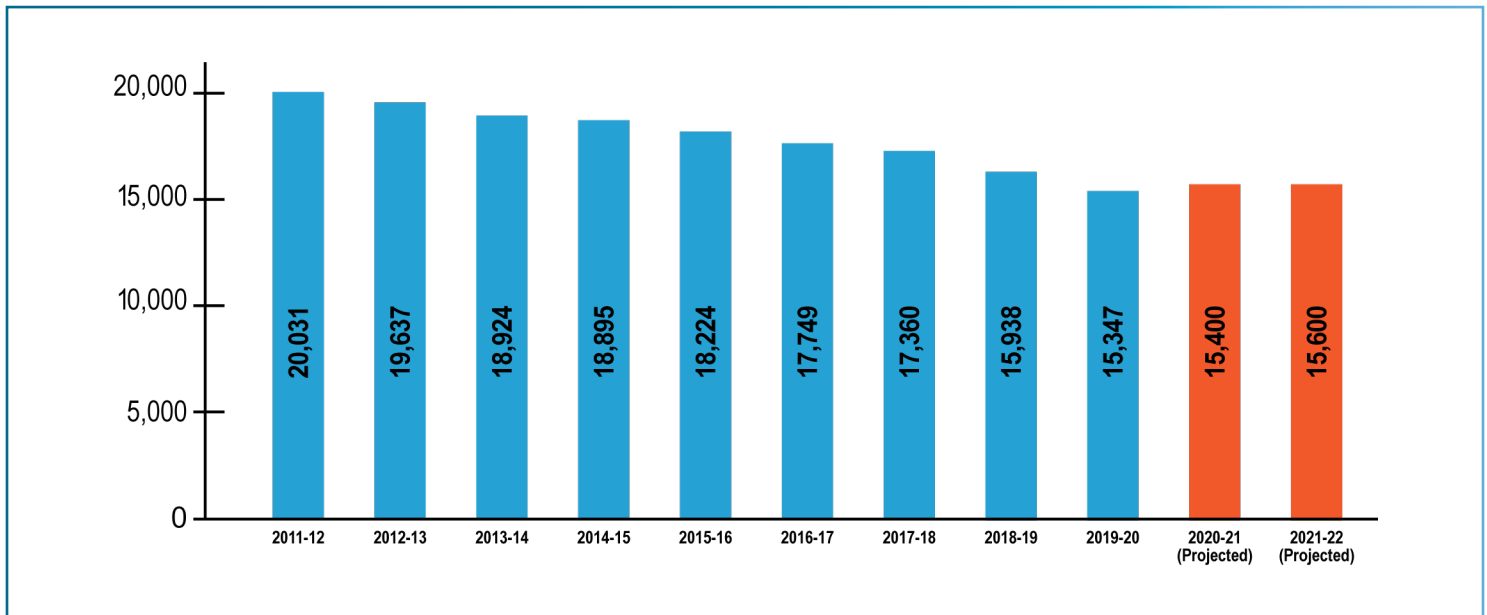
For the 2019-20 academic year, the most popular fields of study among students receiving bachelor's degrees were business, health professions, and education. Health professions, liberal arts and business programs were most frequently selected by the students earning associate degrees. Top fields for students earning a master's degree were business, education and health professions, while for students earning a doctoral degree, top fields were engineering, physical sciences, and education. The most popular areas of study for professional degrees were law, medicine (M.D.), and pharmacy.*

*Source: OSRHE UDS, Degrees Granted 2019-20

FINANCIAL AID

College is an increasingly important investment in every student's and the state's future, and Oklahoma is among the most affordable. In fact, Oklahoma has the 11th-lowest student loan debt level in the nation, and more than half of all Oklahoma students leave college with no loan debt. The State Regents' office provides a number of resources, including websites such as www.okhighered.org, www.OKcollegestart.org, www.okpromise.org, www.UCanGo2.org and www.ReadySetRepay.org, to help Oklahoma families plan for and manage the cost of earning a college degree. Although the state system experienced reductions in state revenues over the past several years, state funding for student financial aid programs increased from \$93.7 million in FY 2011 to \$117.2 million in FY 2020.

NUMBER OF OKLAHOMA'S PROMISE SCHOLARSHIP RECIPIENTS



Source: Oklahoma's Promise 2019-20 Year-End Report

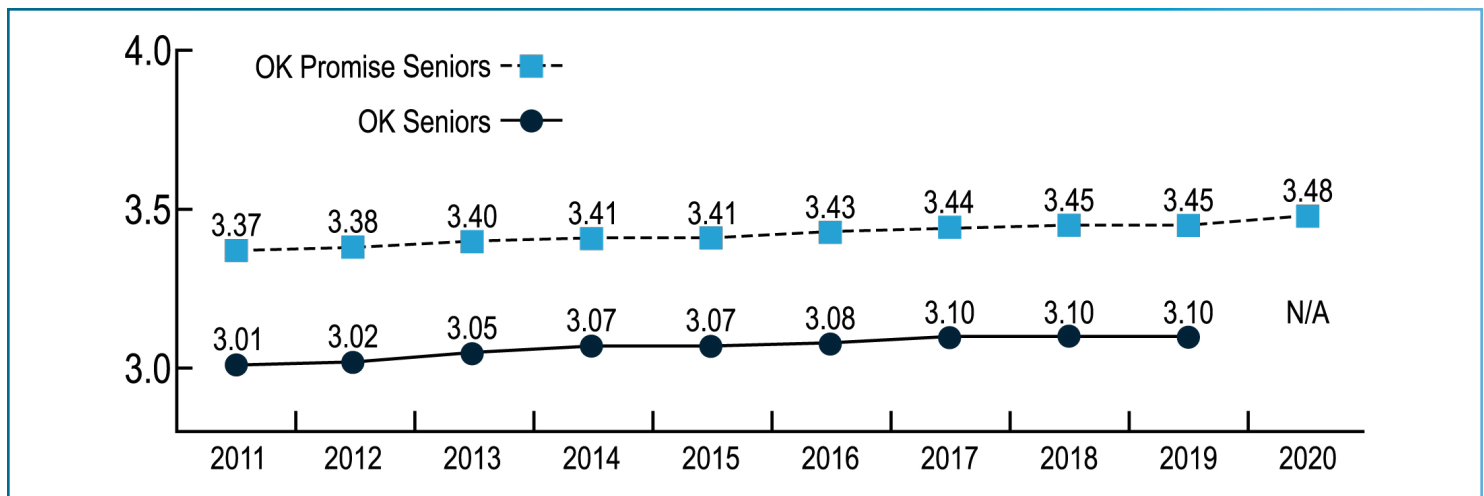
OKLAHOMA'S PROMISE

Oklahoma's Promise is recognized by many as America's best college access program and is considered a model that emphasizes both academic preparation and financial support for college. Created as the Oklahoma Higher Learning Access Program (OHLAP) in 1992 by the Oklahoma Legislature, this unique program assists students whose families earn less than \$55,000 annually and who meet specific academic and conduct eligibility requirements. Students sign up in the eighth, ninth or 10th grade and are required to take specific high school courses and do well in their studies. Students must also show that they're in control outside the classroom by staying away from trouble like drugs, alcohol and gangs. In return, the state of Oklahoma promises to help pay students' college tuition. The first scholarships were awarded in 1996, and through FY 2020, college students have received almost \$900 million in scholarships from the program. In FY 2020, 15,347 students received \$66.7 million in Oklahoma's Promise scholarships.

The program has produced positive results in the academic success of students. In 2020, 75% of graduating high school seniors in the program completed the requirements. On average, participants have higher high school grade point averages and attend college at a higher rate than nonparticipants. Oklahoma's Promise participants also have lower remediation rates, perform better in college and graduate at a higher rate than nonparticipants.

Since FY 2009, Oklahoma's Promise has been funded "off the top" from the state's General Revenue Fund. This approach ensures that the program is fully funded each year from a stable source of revenue.

HIGH SCHOOL GRADE POINT AVERAGE



Source: Oklahoma's Promise 2019-20 Year-End Report

OTHER FINANCIAL AID

OCAP

Since its inception in 1965, the Oklahoma College Assistance Program (OCAP), formerly known as the Oklahoma Guaranteed Student Loan Program, has guaranteed low-interest federal loans through the Federal Family Education Loan Program (FFELP) to help students meet postsecondary educational expenses. The Health Care and Education Affordability Reconciliation Act of 2010 included the elimination of new lending under the FFELP beginning July 1, 2010, prompting a shift in OCAP's business model.

OCAP provides essential college access, borrower education and default prevention programs and services that support students, their families, and the financial aid and student services communities. OCAP educates students and families about planning, preparing and paying for college through the UCanGo2 program and administers OKcollegestart.org, the State Regents' comprehensive, web-based portal for prospective and current college students, parents and educators, which features interactive academic and career planning tools, an online application for the Oklahoma's Promise scholarship program, and an electronic transcript exchange system. OCAP also promotes financial literacy throughout the state via the Oklahoma Money Matters (OKMM) program and provides information and tools to strengthen student loan management through the Ready Set Repay initiative. OCAP continues to service its current student loan portfolio and provide critical student support and advocacy services that benefit students, parents, schools and community partners.

OTAG

The Oklahoma Tuition Aid Grant (OTAG) program is a need-based grant program for Oklahoma residents who attend eligible colleges, universities and career technology centers in the state. Awards may be approved for full- or part-time undergraduate students. Application is made through the Free Application for Federal Student Aid (FAFSA), available online and through high school guidance counselors or financial aid offices at participating colleges, universities and career technology centers. This program serves as a vital financial resource for many adults pursuing college degrees. In 2019-20, more than \$16 million in OTAG funding was awarded to 18,204 students.

OTEG

The Oklahoma Tuition Equalization Grant (OTEG) is a need-based grant program for Oklahoma residents enrolled as full-time undergraduates at Oklahoma not-for-profit, private or independent institutions of higher education. Recipients must have a family income of \$50,000 or less, be an Oklahoma resident according to the State Regents' policy on residency status, and meet the institution's satisfactory academic progress requirements, as well as other requirements. OTEG grant amounts are \$2,000 per academic year, and institutions notify students about their awards. During 2019-20, \$2.68 million in OTEG funding was awarded to 1,585 students.

Academic Scholars

The Academic Scholars Program, established by the state Legislature and governor in 1988 and operated by the State Regents, provides scholarships to academically outstanding students who attend an Oklahoma college or university. Academic Scholars receive a scholarship to help cover the cost of room, board, tuition, books and incidental fees for up to eight semesters. The actual value of the scholarship varies based on the institution the scholar chooses to attend. To qualify for the program, Oklahoma students must achieve designation as a National Merit Scholar, National Merit Finalist or United States Presidential Scholar or score at or above the 99.5 percentile on the ACT or SAT. Public colleges and universities also may nominate students. Academic Scholars receive a scholarship each year, provided they maintain full-time enrollment, complete at least 24 semester credit hours each year and achieve at least a 3.25 cumulative GPA.

In fall 2019, 1,473 students at Oklahoma public and private colleges and universities were enrolled in the program. According to the most recent data available, of the students starting the program between 2012 and 2014, 73% of program participants received an associate, bachelor's or master's degree from an Oklahoma institution within six years. On average, 70% of resident participants retain their scholarships through their fourth year of eligibility. During 2019-20, approximately 73% retained their scholarships.

Photo courtesy of Northeastern State University



STUDENT PREPARATION

The State Regents sponsor numerous programs designed to prepare students academically and financially for college.

OKCOLLEGESTART.ORG

OKcollegestart.org is a comprehensive, web-based information system for prospective and current college students. The site serves as a “one-stop” college planning destination for students and parents. Through the site, students, parents and educators can access links to apply for federal and state financial aid, create their own portfolios, prepare for the ACT and SAT, learn about career opportunities, search for scholarships and explore detailed information about the state’s campuses. The website is currently offered in more than 100 languages and includes information about both public and independent Oklahoma and national colleges and universities.

Financial aid information is also available, including an online application for the Oklahoma’s Promise scholarship program. Students also may choose to give their counselors and parents access to their portfolios, so they can review grades and career assessments together.

More than 600,000 user accounts have been created on OKcollegestart.org since its launch in 2007. There have been more than 28.4 million page views on the site, and more than 102,000 students have applied online for the Oklahoma’s Promise scholarship through OKcollegestart.org.

A companion site for educators allows K-12 and higher education counselors and instructors to access and assign a system-defined Individual Career Academic Plan (ICAP) to specific grades and send and receive electronic transcripts to/from school to school, school to campus, and campus to campus. Since fall 2008, more than 420 Oklahoma high schools have signed up to join the site’s Transcript Exchange System, which is provided free of charge to all Oklahoma high schools, colleges and universities, and career technology centers. The private, secure system allows educators to track students’ progress and send and receive electronic transcripts statewide, among other key features.

GEAR UP

Oklahoma GEAR UP (Gaining Early Awareness and Readiness for Undergraduate Programs), a federally funded program administered by the State Regents, is designed to prepare middle and high school students for college success through direct student support services including college campus tours, ACT test preparation and testing, college exploration and preparation courses, summer melt programs, and one-on-one guidance from school specialists. Oklahoma GEAR UP offers college access and financial aid information to students and families through awareness activities and services, including Oklahoma’s Promise and FAFSA completion assistance.

The program provides collaboration and leadership opportunities for Oklahoma GEAR UP schools and works with them to implement Professional Learning Communities (PLCs), which help teachers and faculty address student achievement, academic interventions and common assessments.

STUDENT PREPARATION TEAM

The Student Preparation Team, formerly the Oklahoma Educational Planning and Assessment System (OK EPAS), began in 1993 as a student preparation initiative. In 2019-20, 93% of Oklahoma’s public school districts participated in the 10th-grade PreACT assessment. Approximately 35,000 (66%) of Oklahoma public school sophomores were assessed using the PreACT.

This effort provides assessments of college readiness that help teachers, students and families identify the need for academic improvements and help students to better prepare for college. It is designed to improve ACT scores, increase college attendance rates and decrease remediation and to help teachers, counselors and school administrators do their jobs more effectively.

The PreACT assessment and reporting services support educators as they help students set and reach goals for life after high school. These reports can be used to monitor student progress over time, detect trends and evaluate instructional outcomes in support of school improvement efforts.

The State Regents' Student Preparation Team provides numerous services for Oklahoma's PK-12 educators, students and parents, including:

- On-site professional development
- Regional fall workshops
- Regional conferences for PK-12 educators
- Annual Summer Institute for PK-12 educators
- PreACT College readiness presentations for students and parents
- Overseeing STEM Summer Academies for middle and high school students

MATH SUCCESS INITIATIVE

In August 2018, Oklahoma public higher education institutions began offering three new college-level mathematics course alternatives to the traditional college algebra course: Quantitative Reasoning, Functions and Modeling, and Elementary Statistics.

Preliminary data results indicate that roughly the same number of students enroll in alternative gateway mathematics courses; in FY 2015, 13,397 students enrolled in college algebra compared to 14,276 in FY 2019. Additionally, the college algebra pass rate for FY 2019 increased to 74% from 71.3% in FY 2015.

Oklahoma public higher education institutions also began offering a corequisite course model, which replaces traditional developmental course sequences. Within the corequisite model, students receive additional academic support and complete the college-level course at the same time. The corequisite college algebra course pass rates for 2019-20 were 74.1%, and corequisite statistics course pass rates for 2019-20 were 73.9%.

From FY 2016-19, pass rates for students with curricular deficiencies who were previously enrolled in long developmental sequences and in traditional developmental courses averaged approximately 61%. Preliminary data results show that in FY 2019, the number of students enrolled in a developmental mathematics course dropped significantly from 33,748 in FY 2015 to 16,853, and pass rates increased to 65.5%.

CONCURRENT ENROLLMENT

Concurrent enrollment allows eligible high school juniors and seniors to get a head start on college by taking courses for college credit. Students who meet admission and course placement requirements can earn college credit at Oklahoma public colleges and universities while still in high school. Home-schooled students may enroll under the same criteria as high school students if they have completed enough high school coursework to be equivalent to an individual who is classified as a junior or senior at an accredited high school and meet applicable criteria. Seniors may also be eligible for a tuition waiver of up to 18 credit hours per academic year for their concurrent courses. In the 2019-20 academic year, about 14,000 students enrolled in concurrent courses generating more than 133,000 credit hours.

COOPERATIVE AGREEMENT PROGRAM

Twenty-nine technology centers across the state have partnered with higher education institutions and branch campuses in Cooperative Agreement programs. Students may earn college credit through assessments and contractual arrangements toward Associate in Applied Science (A.A.S.) degrees offered by a state system college or university.

OKLAHOMA TEACHER CONNECTION

The Oklahoma Teacher Connection (OTC) was created to recruit, retain and place teachers in Oklahoma public schools. OTC accomplishes this goal through a variety of programs.

Teacher Shortage Employment Incentive Program

The Teacher Shortage Employment Incentive Program (TSEIP) is a legislative ruling administered by the State Regents. TSEIP was designed to recruit and retain mathematics and science teachers in Oklahoma. Successful candidates are reimbursed eligible student loan expense or an equivalent cash benefit upon fulfillment of 1) completing an approved professional teacher education program in Oklahoma, 2) holding a valid certificate to teach mathematics or science at the secondary level, and 3) teaching for five consecutive years in Oklahoma's secondary public schools (alternatively certified teachers do not qualify). Since the program's inception in 2006, 434 teachers have received cash incentives for teaching secondary mathematics and/or science in an Oklahoma public school. As of March 2021, 1,080 teachers have enrolled in TSEIP.

Teacher Professional Development

OTC provides teacher professional development for K-12 teachers and higher education reading faculty on an annual basis. Focusing on classroom strategies, reading skills and literacy development, these efforts improve teacher knowledge and skills that impact student achievement. Additionally, aligning teacher competencies, along with state and national standards, is an OTC goal.

Teach Oklahoma

Teach Oklahoma is a yearlong pre-education curriculum designed to introduce high school students into various teaching careers (pre-K through high school) at no cost to the school or district. Taught by a certified teacher, it is an elective credit in high school and includes grant funding (pending annual budget appropriations) to support the goals of the program and class, which are to recruit, retain and place teachers in Oklahoma schools. Teach Oklahoma also has an internship component that is the highlight of the class, so that the student receives "real life" teaching experience with younger students in various academic settings.

Lead Oklahoma

Lead Oklahoma is a leadership curriculum with a special emphasis on teaching as a career option for students in middle or junior high school. Designed with leadership at its core, it teaches students about becoming a leader, identifying their own personality styles and strengths, benefiting from a college education, cooperating with others and managing their time. Lead Oklahoma students also practice community engagement and giving back to their community. The students in Lead Oklahoma are encouraged to have a "little buddy" to mentor. The course includes a special emphasis on the advantages of teaching and being a teacher and grant funding (pending annual budget appropriations). The training and curriculum are provided at no cost to the districts or schools.

Educators Rising

Educators Rising is a national extracurricular organization for junior high or high schools that includes grant funding to support the mission to recruit, retain and place teachers in Oklahoma schools. The direct focus of this organization is to highlight and promote becoming a teacher. The students elect officers, hold official meetings, work with a cooperating school and volunteer their time assisting younger students. Educators Rising hosts an annual state and national competition, with multiple categories, including a chance to be a national officer.



Photo courtesy of the University of Oklahoma

ECONOMIC DEVELOPMENT

HIGHER EDUCATION, HIGHER ECONOMIC IMPACT

Public colleges and universities drive our state's economic advancement agenda. According to a 2019 study commissioned by the State Chamber of Commerce Research Foundation, Oklahoma's public higher education system supported \$8.2 billion in total economic output in FY 2016. The report shows that for every dollar of state appropriations invested, the state system of higher education generates \$9.40 in economic output.

Higher education in Oklahoma is key to economic expansion through the development of the education and workforce pipeline; the fostering of research and innovation; and the improvement of local economies. The academic, campus and statewide programs associated with these three areas intersect to produce multiple layers of economic development activities, as the following graph illustrates.



COMMUNITY, ECONOMIC IMPACT OF THE OKLAHOMA STATE SYSTEM OF HIGHER EDUCATION STUDY

The community and economic impact of the Oklahoma higher education system cannot be calculated exclusively on the number and types of degrees awarded annually or the benefits of an educated populace. The purposes of this study were to document the impacts of Oklahoma's public higher education institutions that are often overlooked, which include the many community and economic development activities occurring within the Oklahoma state system of higher education, and to identify and highlight the key economic and social impacts of institutions on their communities and the state.

Business and industry partnerships are critical components of community success, and Oklahoma's colleges and universities demonstrate their community engagement and partnerships through integral involvement in the economic, social and cultural health of their communities. This study identified four areas in which Oklahoma's colleges and universities are working to partner with business and industry to improve economic growth.

BUSINESS AND INDUSTRY PARTNERSHIP

Technical and research assistance	Community and economic studies	Internships, practicums and capstones	Other external job creation through targeted effort
576 firms and communities assisted	33 studies	3,048 for-profit and nonprofit companies	1,400 jobs
259 projects/programs	41 communities served	5,420 students	

As stewards of their communities, higher education institutions serve to provide access to knowledge, skills, facilities and opportunities for all Oklahomans to prosper. In terms of economic development, higher education institutions provide expertise and resources that private business and industry cannot. From regional and community development to health and wellness to civic engagement, Oklahoma’s public higher education institutions improve the quality of life and economic success of communities across the state.

OKLAHOMA HIGHER EDUCATION AS A RESOURCE TO COMMUNITIES

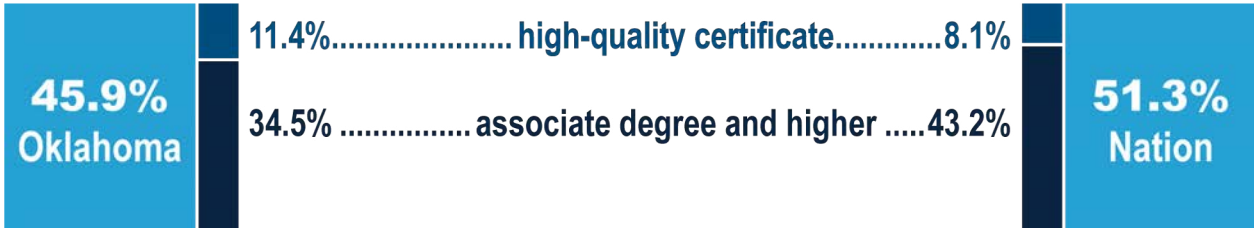
Volunteer assistance and civic engagement	Partnership for community development grants	Institution athletic facilities
2,471 projects assisted	244 partnerships	3,685,679 users
22,400 student volunteers	55 grants	
31,645 faculty and staff volunteers	\$22 million in grants	
849,330 hours served		
Business plan competitions	Health and wellness outreach	Service learning
24 competitions	586 health fairs	25,345 student participants
291 participants	2,152 vendors	525,419 hours served
\$173,200 in monetary awards	23,697 event attendees	

EDUCATION, WORKFORCE PIPELINE

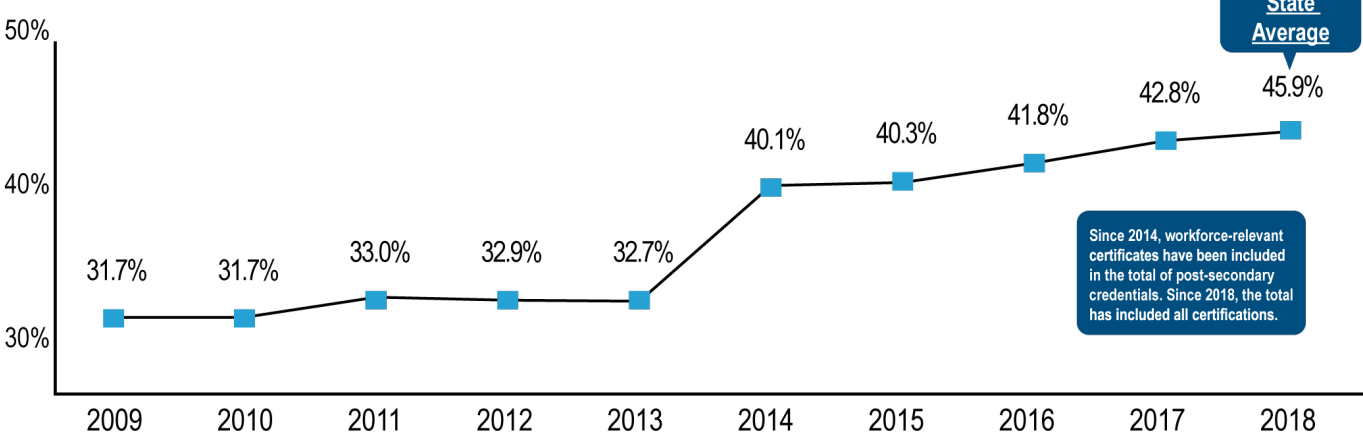
Oklahoma Works/Launch Oklahoma

Oklahoma Works is a coalition of state agencies, educational institutions, businesses and other partners that seek to increase the wealth of all Oklahomans through facilitating quality employment for workers and ready availability of highly skilled talent for business and industry. Since Oklahoma Works’ inception in 2014, the State Regents have continued to be a key player in the initiative. In 2018, Oklahoma Works released the Launch Oklahoma report to demonstrate and track the growing need for postsecondary education and training attainment. As the following graphs illustrate, Oklahoma is making progress in increasing educational attainment, but still lags when compared to the national average.

EDUCATIONAL ATTAINMENT: HOW OKLAHOMA COMPARES TO THE NATION



OKLAHOMA’S PROGRESS — CREDENTIAL ATTAINMENT



Source: Lumina Foundation. 2019. A Stronger Nation: Learning beyond high school builds American talent

Student Employment

The 2019 employment outcomes data analyzes graduates of Oklahoma public colleges and universities one year through five years after graduation, 2013-14 through 2017-18 graduates. Following are highlights of the most recent Oklahoma employment data for the state's higher education graduates:

- Employment by degree level for one year after graduation shows associate in applied science and certificate graduates with the highest percentage of employment (with 90% employment and 85% employment, and 2,789 and 592 employed graduates, respectively), followed by associate in arts/sciences (84% and 5,359 employed graduates), bachelor's (72% and 12,078 employed graduates), master's (64% and 3,299 employed graduates) and doctoral/professional degree holders (60% and 830 employed graduates).
- Resident retention is excellent in the state of Oklahoma, with 87% of 2017-18 bachelor's degree recipients employed in-state one year after graduation, and 87% of master's degree recipients employed in-state one year after graduation. Additionally, 94% of the resident associate in applied science graduates remained; 86% of certificate recipients remained; 88% of associate in arts/science recipients remained; and professional and doctoral degree recipients remained in-state at rates of 74% and 75%, respectively.
- Comparing average annual salary five years after graduation by degree level among all graduates, the data show professional degree holders at the highest level (\$88,567), followed by doctoral (\$60,286), master's (\$52,892), associate in applied sciences (\$45,630), bachelor's (\$42,053), associate in arts/science degree holders (\$37,711) and certificate (\$31,317). Generally, the higher the education level, the higher the median annual salary, demonstrating that educational attainment is linked to salary.






Student Flow From High School to Workforce

According to recent data from the Oklahoma Office of Workforce Development, Oklahoma's current educational attainment levels are below the state's projected needs by 2025.* Oklahoma Department of Commerce information also indicates the number of Oklahoma college graduates lags behind projected educational demand for the 10-year period ending in 2020.

By examining the total number of high school graduates during a given academic year and following them through the state's higher education system, we can more clearly see the trends that exist as students enter college, graduate and, ultimately, participate in the workforce.

The following chart represents the approximate student flow from high school graduate to college graduate and, ultimately, into the workforce. According to the 2019 State Regents' High School Indicators Project reports, 4.4 out of every 10 Oklahoma public high school graduates enter an Oklahoma public college or university in the fall following high school graduation. Of the 4.4 first-time-entering students attending college in the fall, 1.2 of those students receive developmental education in one of four subject areas to prepare them for the rigor of college level coursework.

Approximately three of every four first-time, full-time students from public institutions persist to their second year, where approximately 1.7 of those students will go on to attain a bachelor's degree, while less than one (.6) will attain a certificate or an associate degree within 100% expected time to graduation.*

High School to College-Going Rate		Fall First-Time, Full-Time, Degree-Seeking Cohort		
High School Graduate	Fall First-Time Entering (College-Going)	Students Persisting Into Their Sophomore Year	Graduates With Bachelor's Degree	Graduates With Certificate or Associate Degree
				

* Source: Oklahoma State Regents for Higher Education. UDS Record D and Record S as of 2-22-21 Oklahoma State Regents for Higher Education. 2019 High School Indicators Project data.

RESEARCH, INNOVATION

Business Plan Competition

The State Regents are a major sponsor of the state's annual Love's Cup competition, which awards more than \$100,000 in cash prizes each year to college and university student teams that develop innovative business plans. The competition helps to bridge the gap between entrepreneurial theory and practical experience and provides incentives for new businesses to remain in the state. In its 17-year history, the competition has involved 36 of Oklahoma's college and university campuses, with 2,458 students working on more than 740 innovative ideas. Since its first-year, the competition has awarded \$2.1 million in cash, \$155,000 in scholarships and more than \$250,000 in fellowships.

Broadband Expansion

As a division of the State Regents, OneNet is Oklahoma's official internet service provider for education, government, health care and research. In addition to providing internet services, OneNet operates the Oklahoma Community Anchor Network (OCAN). Completed in 2013, this 10Gbps optical network spans 1,100 miles, impacts 35 counties and connects 93 community anchor institutions. Through management of OCAN, OneNet provides new options for connectivity for education, research, health care and public safety institutions. OCAN offers opportunities for local telecommunications providers to lease fiber and deliver services to the private sector. These public/private partnerships enable OneNet and OCAN to extend services further into Oklahoma's rural communities and lay a foundation for commerce and economic opportunity in rural areas of the state. OneNet also serves as the State Broadband Office and provides coordination for broadband projects and incentives for broadband expansion throughout rural and underserved areas of Oklahoma.

LOCAL ECONOMIC IMPACT

Economic Development Partners

In 2005, the State Regents' Economic Development Council created the Regents' Business Partnership Excellence Award to foster opportunities for public higher education institutions to expand or create education and business partnerships to meet workforce needs. To date, the State Regents have awarded \$184,000 to 368 businesses and education partnerships, which has been matched by partnering colleges and universities to support tuition waivers, internships, externships and equipment.

Business Support Services

Oklahoma's public colleges and universities offer business solutions through training, research and innovation with a wide range of experts who offer a variety of unique services, such as business plan development and counseling for local businesses, Career Readiness Certificate (CRC) assessment sites, customized training, continuing education, career services, veteran services and centers of excellence.

OKHigherEdConnect.org

Oklahoma's higher education system is committed to growing Oklahoma businesses and recruiting companies to the state. To facilitate the connection between businesses and higher education institutions, the State Regents launched OKHigherEdConnect.org, an online searchable database of business resources available at Oklahoma's colleges and universities. This database is a handy informational tool that is both simple to use and thorough, with services ranging from tools to help people start a business or expand their customer base to customized corporate training programs. Customers can search for a particular service by type of service, by city and proximity to a city, and by institution and region of the state. Ideally, search results will direct them to the colleges or universities with the business resources that fit their needs. Individuals wanting to start a business, businesses needing a particular service and economic developers searching for the perfect location are the targeted customers for the database. After selecting all the desired criteria, the results are available in a grid and exportable Excel spreadsheet.

REVENUE

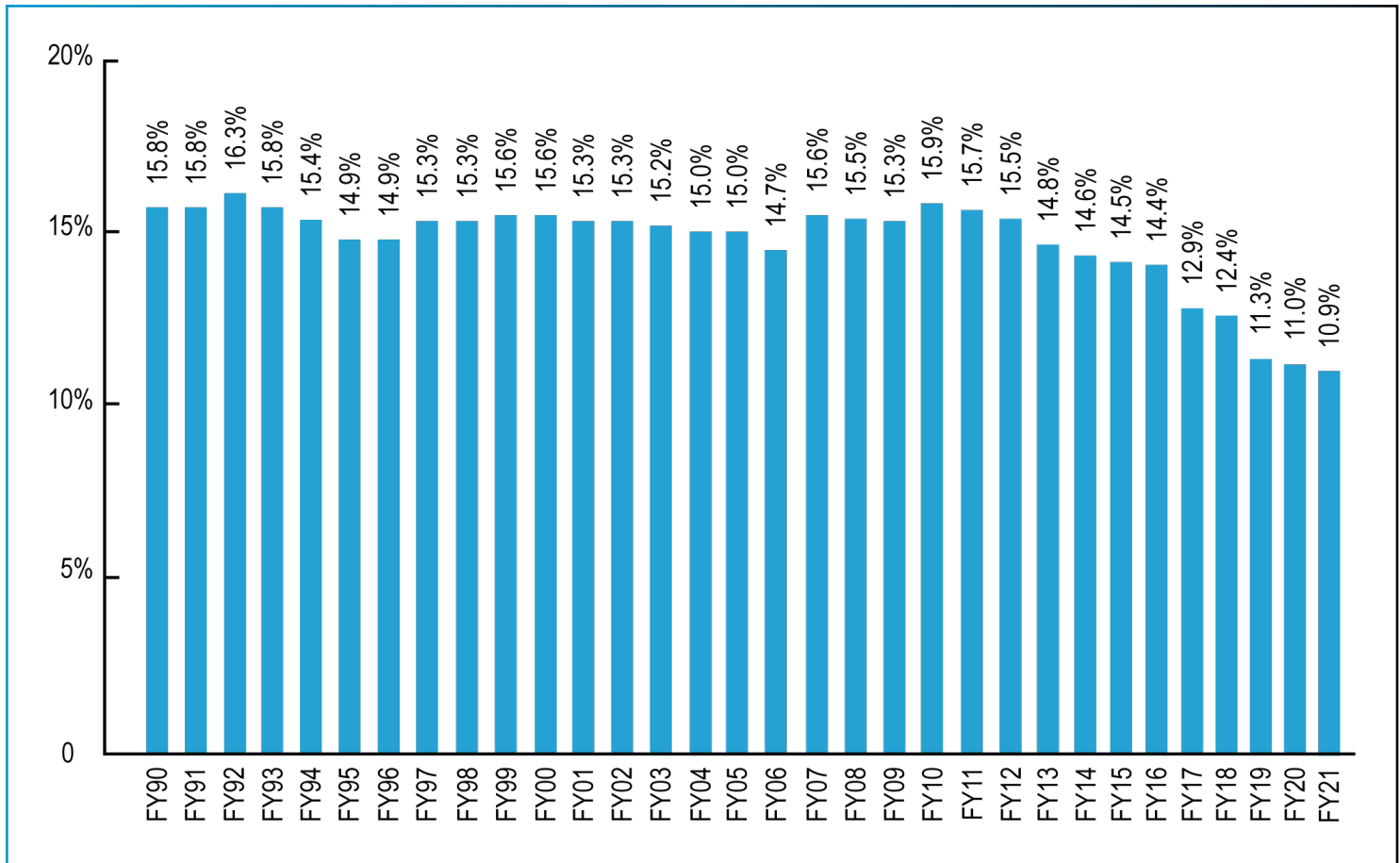
Educational and general budgets support institutions' missions of teaching, research and public service. Each year, it is the State Regents' intent to maximize the funding that goes to the operating budgets of the colleges and universities, particularly in light of significant annual increases in mandatory costs, primarily in the areas of insurance and retirement costs.

The FY 2021 E&G Part I plus Part II total systemwide budget decreased by 1.8% or \$55.2 million, from \$3,063.3 million for 2020 to \$3,008.2 million for 2021. State appropriations to higher education for FY 2021 began with a 3.95% reduction from FY 2020. Budgeted tuition and fee gross revenue decreased by approximately \$41.4 million, or 3%.

Higher education's appropriation as a percentage of the state budget decreased from 11.0% in FY 2020 to 10.9% in FY 2021. When compared to the percentage of the total state budget in 1980, higher education's portion has declined by 7.65 percentage points, from 18.55% in FY 1980 to 10.9% in FY 2021.

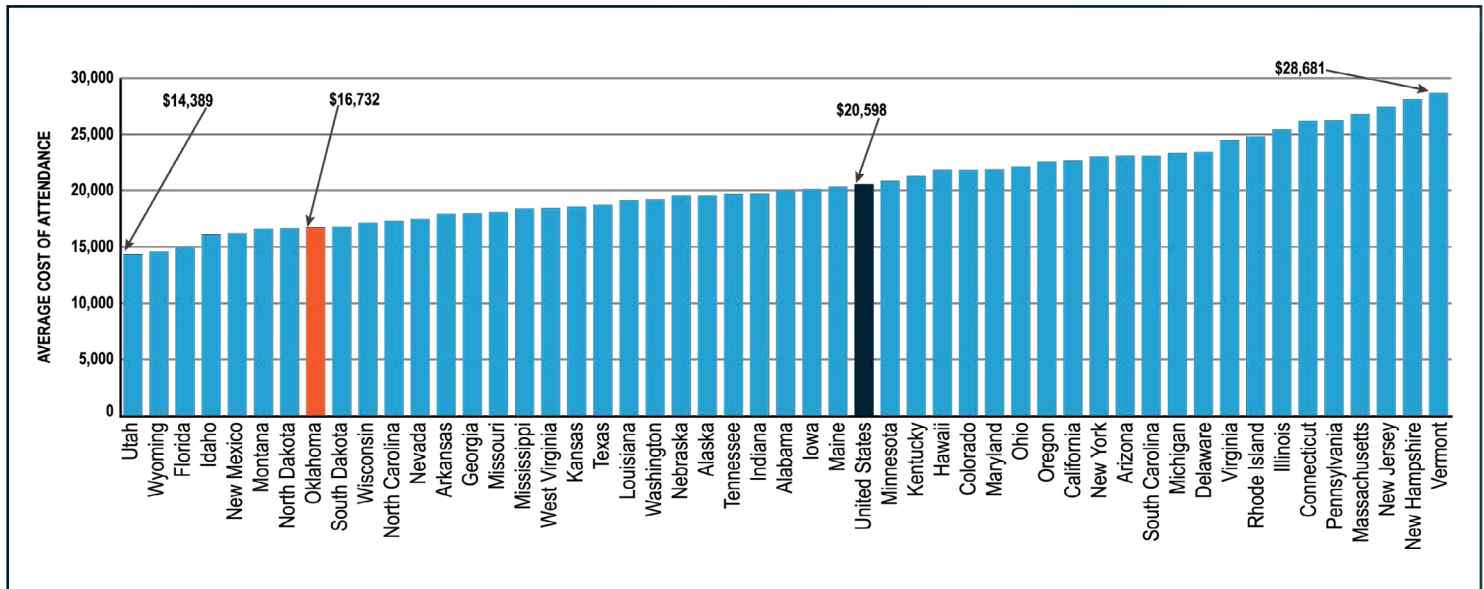
The FY 2021 E&G Part I budget shows a decrease of \$565,227 (0.2%) and is comprised of a 3.9% decrease in state support and 2.1% increase in self-generated revolving funds.

HIGHER EDUCATION AS A PERCENTAGE OF TOTAL STATE APPROPRIATIONS, FY 1990 TO FY 2021



Source: OSRHE, Educational and General Budgets Summary and Analysis, Fiscal Year 2021

AVERAGE STUDENT COST OF PUBLIC 4-YEAR INSTITUTIONS OF HIGHER EDUCATION



Source: U.S. Department of Education, National Center for Education Statistics 2019 Tables and Figures, Table 330.20

TUITION

A four-year resident Oklahoma college student is paying an average of \$62.06 more per year than in 2019-20. All institutions are well within the limits set by the Legislature, and Oklahoma continues to be one of the most affordable states in the nation for higher education.

OSRHE FY21 LEGISLATIVE PEER LIMITS FOR TUITION AND MANDATORY FEES

Undergraduate (30 Credit Hours)	FY21 Peer Limit for Resident Tuition and Mandatory Fees	FY21 Per Credit Hour Rate	FY21 Peer Limit for Nonresident Tuition and Mandatory Fees	FY21 Per Credit Hour Rate
Research Universities*	\$11,910	\$397	\$32,868	\$1,096
Regional Universities**	\$8,015	\$267	\$17,425	\$581
University of Central Oklahoma	\$8,506	\$284	\$21,541	\$718
University of Science & Arts of Oklahoma	\$10,469	\$349	\$23,489	\$783
Community Colleges	\$6,502	\$217	\$11,249	\$375

Graduate (24 Credit Hours)	FY21 Peer Limit for Resident Tuition and Mandatory Fees	FY21 Per Credit Hour Rate	FY21 Peer Limit for Nonresident Tuition and Mandatory Fees	FY21 Per Credit Hour Rate
Research Universities*	\$10,722	\$447	\$25,395	\$1,058
Regional Universities**	\$8,481	\$353	\$15,612	\$651
University of Central Oklahoma	\$10,215	\$426	\$21,357	\$890

Tier	Peer Institutions
Research Universities*	Big 12 Public Institutions
Regional Universities**	Like-type public institutions in surrounding and other states
Community Colleges	Public two-year colleges that receive no local tax funding in surrounding and other states

*Includes OSUIT, OSU-OKC, OSU-Tulsa, OUHSC and OU-Tulsa

**Includes the University Center of Southern Oklahoma

COLLEGE COSTS

The cost of a college or university course is determined by the number of credit hours awarded for completing the class. Usually, one credit hour represents one hour of in-class instruction per week for 16 weeks in a specific subject. Therefore, the cost of one course is determined by multiplying the number of credit hours the class is worth by the total tuition and mandatory fees per credit hour. The tables below show the estimated costs for full-time resident and nonresident undergraduate students for 2020-21. The estimates are based on students enrolled in 30 semester credit hours during the academic year.

AVERAGE COST OF ATTENDANCE AT OKLAHOMA COLLEGES AND UNIVERSITIES, 2020-21 FULL-TIME UNDERGRADUATE RESIDENT STUDENTS

	Research Universities	Regional Universities	Community Colleges	Technical Branches	OSU-Tulsa (Note 1)	OU Health Sciences Center (Note 1)
Tuition	\$5,072	\$5,665	\$3,386	\$4,203	\$5,357	\$4,788
Mandatory Fees	\$3,968	\$1,605	\$1,212	\$4,991	\$3,662	\$2,752
Average Academic Service Fees	\$3,069	\$636	\$390	\$623	\$2,091	\$3,286
Books & Supplies	\$970	\$1,148	\$1,306	\$1,320	\$1,140	\$6,112
Total Costs for Commuter Students	\$13,079	\$9,054	\$6,294	\$7,137	\$12,250	\$16,938
Room & Board*	\$9,760	\$6,590	\$6,164	\$5,896	N/A	N/A
Total Costs for Students Living on Campus	\$22,839	\$15,644	\$12,458	\$13,033	N/A	N/A

AVERAGE COST OF ATTENDANCE AT OKLAHOMA COLLEGES AND UNIVERSITIES, 2020-21 FULL-TIME UNDERGRADUATE NONRESIDENT STUDENTS

	Research Universities	Regional Universities	Community Colleges	Technical Branches	OSU-Tulsa (Note 1)	OU Health Sciences Center (Note 1)
Tuition	\$20,523	\$14,126	\$8,639	\$10,657	\$20,877	\$20,169
Mandatory Fees	\$3,968	\$1,605	\$1,212	\$991	\$3,662	\$2,752
Average Academic Service Fees	\$3,069	\$636	\$390	\$623	\$2,091	\$3,286
Books & Supplies	\$970	\$1,148	\$1,306	\$1,320	\$1,140	\$6,112
Total Costs for Commuter Students	\$28,530	\$17,515	\$11,547	\$13,591	\$27,770	\$32,319
Room & Board*	\$9,760	\$6,590	\$6,164	\$5,896	N/A	N/A
Total Costs for Students Living on Campus	\$38,290	\$24,105	\$17,711	\$19,487	N/A	N/A

*Room and board estimates are based on student living in a traditional dormitory with a roommate and participating in a board (meal) plan. Many institutions offer a wide variety of room and board plans, and costs may differ from the average reported above.

Full-time student costs are based on 30 credit hours per academic year. Totals may not add up due to rounding.

Note 1: These institutions do not have traditional dormitory facilities with board plans.

INSTITUTIONAL HIGHLIGHTS





Cameron University

www.cameron.edu

President
John McArthur

Governing Board
University of Oklahoma Board of Regents: Chair Michael A. Cawley, Vice Chair Frank Keating, Phil B. Albert, Natalie Shirley, Eric Stevenson, Anita L. Holloway and Rick Nagel

Accreditations
Higher Learning Commission (HLC), Accreditation Council for Business Schools and Programs, American Chemical Society, Commission on Accreditation for Respiratory Care, Joint Review Committee on Education in Radiologic Technology, National Accrediting Agency for Clinical Laboratory Sciences, National Association of Schools of Music, National Council for the Accreditation of Teacher Education, Oklahoma Office of Educational Quality and Accountability

Locations
Lawton, Duncan

Founding Date
1908

Nickname/Mascot
Aggies

2019-20 Enrollment
4,977

2019-20 Top-5 Majors
Health Professions, Business Management and Administration, Education, Psychology, Parks/Recreation/Fitness



Carl Albert State College

www.carlalbert.edu

President
Jay Falkner

Governing Board
Carl Albert State College Board of Regents: Chair Belva Barber, Vice Chair Ron Lawson, Secretary R. Carroll Huggins, Mark Caldwell, Deanna Reed, Dwight Spencer, and Lavon Williams

Accreditations
Higher Learning Commission (HLC), Accreditation Commission for Education in Nursing, Inc (ACEN), Commission on Accreditation in Physical Therapy Education (CAPTE), Association of Community College Trustees

Locations
Poteau, Sallisaw

Founding Date
1933

Nickname/Mascot
Vikings

2019-20 Enrollment
2,398

2019-20 Top-5 Majors
Health Professions, Liberal Arts/General Studies, Business Management and Administration, Family and Consumer Sciences, Social Sciences





Connors State College

www.connorsstate.edu

President
Ron Ramming

Governing Board
Oklahoma State University/A&M Board of Regents: Chair Dr. Trudy Milner, Vice Chair Jarold Callahan, Calvin J. Anthony, Billy G. Taylor, Rick Davis, Joe D. Hall, Jimmy Harrel, Rick Walker and Blayne Arthur

Accreditations
Higher Learning Commission (HLC), Accreditation Commission for Education in Nursing (ACEN), Oklahoma Board of Nursing, National Association for the Education of Young Children

Locations
Warner, Muskogee

Founding Date
1908

Nickname/Mascot
Cowboys

2019-20 Enrollment
2,727

2019-20 Top-5 Majors
Education, Health Professions, Business Management and Administration, Agriculture, Biological Sciences



East Central University

www.ecok.edu

President
Katricia G. Pierson

Governing Board
Regional University System of Oklahoma Board of Regents: Chair Connie Reilly, Vice Chair Jane McDermott, Secretary Amy Anne Ford, Susan Winchester, Chris Van Denhende, Lake Carpenter, Gary Parker, Eric Fisher and Joy Hofmeister

Accreditations
Higher Learning Commission (HLC), National Council for Accreditation of Teacher Education (NCATE), Oklahoma State Board of Education for Teacher Education, National Environmental Health Science and Protection Accreditation Council (EHAC), American Bar Association - Standing Committee on Legal Education, Council on Social Work Education, Council for Accreditation of Counseling and Related Educational Programs, Oklahoma Board of Nursing, Accreditation Commission for Education in Nursing (ACEN), Accreditation Council for Business Schools and Programs (ACBSP), Council on Rehabilitation Education, National Association of Schools of Music (NASM), Oklahoma Council on Law Enforcement Education and Training, Collegiate Officer Program

Locations
Ada

Founding Date
1909

Nickname/Mascot
Tigers/Roary

2019-20 Enrollment
4,413

2019-20 Top-5 Majors
Business Management and Administration, Education, Health Professions, Parks/Recreation/Fitness, Public Administration and Social Services





Eastern Oklahoma State College

www.eosc.edu

President
Janet Wansick

Governing Board
Eastern Oklahoma State College Board of Regents: Chair Brian Lott, Vice Chair Cara Bland, Secretary Larry Spradley, Teresa Jackson, Latt Jeffrey, Bobby Mouser and Leland Walker

Accreditations
Higher Learning Commission (HLC), National Accrediting Agency for Clinical Laboratory Sciences, Accreditation Commission for Education in Nursing (ACEN)

Locations
Wilburton, McAlester

Founding Date
1908

Nickname/Mascot
Mountaineers

2019-20 Enrollment
1,829

2019-20 Top-5 Majors
Education, Health Professions, Business Management and Administration, Biological Sciences, Protective Services



Langston University

www.langston.edu

President
Kent J. Smith Jr.

Governing Board
Oklahoma State University/A&M Board of Regents: Chair Dr. Trudy Milner, Vice Chair Jarold Callahan, Calvin J. Anthony, Billy G. Taylor, Rick Davis, Joe D. Hall, Jimmy Harrel, Rick Walker and Blayne Arthur

Accreditations
Higher Learning Commission (HLC), Oklahoma Office of Educational Quality and Accountability, Oklahoma Board of Nursing, National Council for Accreditation of Teacher Education, Association of Collegiate Business Schools and Programs, Commission on Accreditation in Physical Therapy Education, Accreditation Commission for Education in Nursing, Council on Rehabilitation Education, National Association for the Education of Young Children, National Council for the Accreditation of Educator Preparation

Locations
Langston, Oklahoma City, Tulsa

Founding Date
1897

Nickname/Mascot
Lions

2019-20 Enrollment
2,504

2019-20 Top-5 Majors
Health Professions, Liberal Arts/General Studies, Education, Business Management and Administration, Psychology





Murray State College

www.msco.edu

President
Joy McDaniel

Governing Board
Murray State College Board of Regents: Chair Suzie Brewster, Secretary Adisha Chapman, Gary Greene, Allen Benson and Leslie Kutz

Accreditations
Higher Learning Commission (HLC), American Veterinary Medical Association, Accrediting Commission for Education in Nursing (ACEN), Commission on Accreditation in Physical Therapy Education, Accreditation Council for Occupational Therapy Education, National Council for State Authorization Reciprocity Agreement (NC SARA)

Locations
Tishomingo, Ardmore

Founding Date
1908

Nickname/Mascot
Aggies

2019-20 Enrollment
2,692

2019-20 Top-5 Majors
Health Professions, Liberal Arts/General Studies, Business Management and Administration, Education, Psychology



Northeastern Oklahoma A&M College

www.neo.edu

President
Kyle J. Stafford

Governing Board
Oklahoma State University/A&M Board of Regents: Chair Dr. Trudy Milner, Vice Chair Jarold Callahan, Calvin J. Anthony, Billy G. Taylor, Rick Davis, Joe D. Hall, Jimmy Harrel, Rick Walker and Blayne Arthur

Accreditations
Higher Learning Commission (HLC), Oklahoma Board of Nursing, Accreditation Commission for Education in Nursing (ACEN), Commission on Accreditation in Physical Therapy Education, National Accrediting Agency for Clinical Laboratory Sciences

Locations
Miami

Founding Date
1919

Nickname/Mascot
The Golden Norsemen

2019-20 Enrollment
2,285

2019-20 Top-5 Majors
Health Professions, Liberal Arts/General Studies, Business Management and Administration, Agriculture, Natural Sciences





Northeastern State University

www.nsuok.edu

President
Steve Turner

Governing Board

Regional University System of Oklahoma Board of Regents: Chair Connie Reilly, Vice Chair Jane McDermott, Secretary Amy Anne Ford, Susan Winchester, Chris Van Denhende, Lake Carpenter, Gary Parker, Eric Fisher and Joy Hofmeister

Accreditations

Higher Learning Commission (HLC), Council for the Accreditation of Education Preparation, Accreditation Council on Optometric Education, Accreditation Commission for Education in Nursing, Association of Collegiate Business Schools and Programs, Accreditation Council for Education in Nutrition and Dietetics of the American Dietetic Association, Council on Social Work Education, Council on Academic Accreditation in Audiology and Speech-Language Pathology of the American Speech-Language-Hearing Association, National Association of Schools of Music, National Accrediting Agency for Clinical Laboratory Sciences, American Chemical Society, Accreditation Council for Occupational Therapy Education of the American Occupational Therapy Association, Council for Accreditation of Counseling and Related Educational Programs, Accreditation Review Commission in Education for the Physician Assistant

Locations

Tahlequah, Muskogee, Broken Arrow

Founding Date

1909

Nickname/Mascot

RiverHawks

2019-20 Enrollment

9,080

2019-20 Top-5 Majors

Liberal Arts/General Studies, Business Management and Administration, Education, Health Professions, Psychology



NORTHEASTERN
STATE UNIVERSITY



Northern Oklahoma College

www.noc.edu

President
Clark Harris

Governing Board

Northern Oklahoma College Board of Regents: Chair Michael P. Martin, Vice Chair Jami Groendyke, Secretary Stan Brownlee, Dale DeWitt and Jodi R. Cline

Accreditations

Higher Learning Commission (HLC), Accreditation Commission for Education in Nursing (ACEN), Oklahoma Board of Nursing, Accreditation Council for Business Schools and Programs (ACBSP)

Locations

Tonkawa, Enid, Stillwater, Ponca City

Founding Date

1901

Nickname/Mascot

Mavericks (Tonkawa), Jets (Enid)

2019-20 Enrollment

5,599

2019-20 Top-5 Majors

Health Professions, Business Management and Administration, Liberal Arts/General Studies, Social Sciences, Education



NORTHERN
Oklahoma College
TONKAWA | ENID | STILLWATER



Northwestern Oklahoma State University

www.nwosu.edu

President
Janet Cunningham

Governing Board
Regional University System of Oklahoma Board of Regents: Chair Connie Reilly, Vice Chair Jane McDermott, Secretary Amy Anne Ford, Susan Winchester, Chris Van Denhende, Lake Carpenter, Gary Parker, Eric Fisher and Joy Hofmeister

Accreditations
Higher Learning Commission (HLC), Council on Social Work Education, Accreditation Council for Business Schools and Programs, Commission for Collegiate Nursing Education, Accreditation Commission for Education in Nursing, Council for the Accreditation of Educator Preparation

Locations
Alva, Enid, Woodward

Founding Date
1897

Nickname/Mascot
Rangers

2019-20 Enrollment
2,295

2019-20 Top-5 Majors
Education, Business Management and Administration, Health Professions, Psychology, Parks/Recreation/Fitness



Northwestern
OKLAHOMA STATE UNIVERSITY

Oklahoma City Community College

www.occc.edu

Interim President
Jeremy L. Thomas

Governing Board
Oklahoma City Community College Board of Regents: Chair Devery Youngblood, Vice Chair Kevin Perry, Secretary Christie Burgin, David Echols, Jalal Farzaneh, Raúl Font and James R. White

Accreditations
Higher Learning Commission (HLC), National Association for the Education of Young Children, Accreditation Council for Business Schools and Programs, National Automotive Technicians Education Foundation, Commission on Accreditation for Respiratory Care, Commission on Accreditation in Physical Therapy Education, Oklahoma Board of Nursing, Accreditation Commission for Education in Nursing, Accreditation, Council for Occupational Therapy Education, Committee on Accreditation of Allied Health Education Programs, and Committee on Accreditation of Educational Programs for Emergency Medical Services Professions

Locations
Oklahoma City

Founding Date
1972

Nickname/Mascot
N/A

2019-20 Enrollment
17,240

2019-20 Top-5 Majors
Health Professions, Liberal Arts/General Studies, Business Management and Administration, Biological Sciences, Computer and Information Sciences



OKLAHOMA CITY
COMMUNITY COLLEGE



Oklahoma Panhandle State University

www.opsu.edu

President
Tim Faltyn

Governing Board
Oklahoma State University/A&M Board of Regents: Chair Dr. Trudy Milner, Vice Chair Jarold Callahan, Calvin J. Anthony, Billy G. Taylor, Rick Davis, Joe D. Hall, Jimmy Harrel, Rick Walker and Blayne Arthur

Accreditations
Higher Learning Commission (HLC), National Council for Accreditation of Teacher Education, Accreditation Commission for Education in Nursing (ACEN)

Locations
Goodwell

Founding Date
1909

Nickname/Mascot
Aggies

2019-20 Enrollment
1,472

2019-20 Top-5 Majors
Health Professions, Business Management and Administration, Agriculture, Biological Sciences, Parks/Recreation/Fitness



Oklahoma State University

www.okstate.edu

President
Kayse Shrum

Governing Board
Oklahoma State University/A&M Board of Regents: Chair Dr. Trudy Milner, Vice Chair Jarold Callahan, Calvin J. Anthony, Billy G. Taylor, Rick Davis, Joe D. Hall, Jimmy Harrel, Rick Walker and Blayne Arthur

Accreditations
For a complete list of accreditations for the OSU-Stillwater campus, visit accreditation.okstate.edu. For information about programs at the OSU Center for Health Sciences, visit medicine.okstate.edu. For the Oklahoma City campus, visit osuokc.edu/academics. For the Institute of Technology in Okmulgee, visit osuit.edu/academics.

Locations
Stillwater, Oklahoma City, Okmulgee, Tahlequah, Tulsa

Founding Date
1890

Nickname/Mascot
Cowboys

2019-20 Enrollment
38,351

2019-20 Top-5 Majors
Business Management and Administration, Health Professions, Engineering, Agriculture, Engineering Technologies





Redlands Community College

www.redlandsc.edu

President
Jack Bryant

Governing Board
Redlands Community College Board of Regents: Chair Janie Thompson, Vice Chair Dr. Juanita Krittenbrink, Secretary Dr. David Von Tungeln, Lori Burns, Dr. Rhys Cole, Lynda McColl and Kass Newell

Accreditations
Higher Learning Commission (HLC), Accreditation Commission for Education in Nursing (ACEN), Oklahoma Board of Nursing (OBN)

Locations
El Reno

Founding Date
1938

Nickname/Mascot
Cougars

2019-20 Enrollment
2,495

2019-20 Top-5 Majors
Liberal Arts/General Studies, Health Professions, Family and Consumer Sciences, Agriculture, Business Management and Administration

Rogers State University

www.rsu.edu

President
Larry Rice

Governing Board
University of Oklahoma Board of Regents: Chair Michael A. Cawley, Vice Chair Frank Keating, Phil B. Albert, Natalie Shirley, Eric Stevenson, Anita L. Holloway and Rick Nagel

Accreditations
Higher Learning Commission (HLC), Accreditation Commission for Education in Nursing (ACEN), Commission on Accreditation of Allied Health Education Programs (CAAHEP)

Locations
Claremore, Bartlesville, Pryor

Founding Date
1909

Nickname/Mascot
Hillcats

2019-20 Enrollment
4,292

2019-20 Top-5 Majors
Business Management and Administration, Health Professions, Biological Sciences, Social Sciences, Liberal Arts/General Studies





Rose State College

www.rose.edu

President
Jeanie Webb

Governing Board
Rose State College Board of Regents: Chair Timothy D. Ossinger, Vice Chair Laurie Vaught Majors, Secretary Stacy Willard, Brandon Clabes, William H. Croak, Norm Mejstrik and Gregory C. Smith

Accreditations
Higher Learning Commission (HLC), American Bar Association, Council on Law Enforcement Education (CLEET), Commission on Accreditation for Health Informatics and Information Management Education (CAHIM), Commission on Accreditation for Respiratory Care (CoARC), Commission on Dental Accreditation of the American Dental Association, Joint Review Committee on Education in Radiologic Technology, National Accrediting Agency for Clinical Laboratory Sciences, Accreditation Commission for Education in Nursing (ACEN), Oklahoma Board of Nursing, Oklahoma State Accrediting Agency, National Association for the Education of Young Children (NAEYC)

Locations
Midwest City

Founding Date
1970

Nickname/Mascot
Raiders

2019-20 Enrollment
9,426

2019-20 Top-5 Majors
Health Professions, Business Management and Administration, Protective Services, Psychology, Liberal Arts/General Studies



Seminole State College

www.sscok.edu

President
Lana Reynolds

Governing Board
Seminole State College Board of Regents: Chair Ray McQuiston, Vice Chair Ryan Pitts, Secretary Kim Hyden, Bryan Cain, Marci Donaho, Curtis Morgan and Ryan Franklin

Accreditations
Higher Learning Commission (HLC), National League for Nursing, Oklahoma Board of Nursing, National Accrediting Agency for Clinical Laboratory Sciences

Locations
Seminole

Founding Date
1931

Nickname/Mascot
Trojans

2019-20 Enrollment
1,928

2019-20 Top-5 Majors
Biological Sciences, Health Professions, Business Management and Administration, Liberal Arts/General Studies, Education





Southeastern Oklahoma State University

www.se.edu

President
Thomas Newsom

Governing Board
Regional University System of Oklahoma Board of Regents: Chair Connie Reilly, Vice Chair Jane McDermott, Secretary Amy Anne Ford, Susan Winchester, Chris Van Denhende, Lake Carpenter, Gary Parker, Eric Fisher and Joy Hofmeister

Accreditations
Higher Learning Commission (HLC), Association to Advance Collegiate Schools of Business International, Aviation Accreditation Board International (Bachelor of Science in Aviation Professional Pilot), National Association of Schools of Music, Council for the Accreditation of Educator Preparation

Locations
Durant, Idabel

Founding Date
1909

Nickname/Mascot
Savage Storm

2019-20 Enrollment
6,534

2019-20 Top-5 Majors
Business Management and Administration, Education, Engineering Technologies, Parks/Recreation/Fitness, Liberal Arts/General Studies



Southwestern Oklahoma State University

www.swosu.edu

President
Diana Lovell

Governing Board
Regional University System of Oklahoma Board of Regents: Chair Connie Reilly, Vice Chair Jane McDermott, Secretary Amy Anne Ford, Susan Winchester, Chris Van Denhende, Lake Carpenter, Gary Parker, Eric Fisher and Joy Hofmeister

Accreditations
Higher Learning Commission (HLC) and 14 other nationally accredited academic programs in business, chemistry, education, engineering technology, health information management, industrial technology, medical laboratory technician, music, music therapy, nursing, occupational therapy assistant, pharmacy, physical therapy assistant and radiologic technology

Locations
Weatherford, Sayre

Founding Date
1901

Nickname/Mascot
Bulldogs

2019-20 Enrollment
5,778

2019-20 Top-5 Majors
Health Professions, Multi/Interdiscipline Study, Business Management and Administration, Education, Parks/Recreation/Fitness





Tulsa Community College

www.tulsacc.edu

President
Leigh Goodson

Governing Board
Tulsa Community College Board of Regents: Chair Caron Lawhorn, Vice Chair William R. McKamey, Secretary James H. Beavers, Mitch Adwon, Samuel Combs III, Paul H. Cornell and Wesley G. Mitchell

Accreditations
Higher Learning Commission (HLC), American Association of Community Colleges, Joint Review Committee on Education in Cardiovascular Technology, National Association for the Education of Young Children, Commission on Dental Accreditation, Commission on Accreditation of Allied Health Education Programs, Joint Review Committee on Education in Diagnostic Medical Sonography, Commission on Accreditation for Health Informatics and Information Management Education, American Health Information Management Association, National Accrediting Agency for Clinical Laboratory Sciences, Oklahoma Board of Nursing, Accreditation Commission for Education in Nursing, Accreditation Council for Occupational Therapy Education of the American Occupational Therapy Association, National Accrediting Agency for Clinical Laboratory Sciences, Commission on Accreditation in Physical Therapy Education, Joint Review Committee on Education in Radiologic Technology, Commission on Accreditation for Respiratory Care, American Veterinary Medical Association/Committee on Veterinary Technology Education and Activities

Locations
Tulsa

Founding Date
1970

Nickname/Mascot
N/A

2019-20 Enrollment
22,745

2019-20 Top-5 Majors
Health Professions, Business Management and Administration, Engineering, Computer and Information Sciences, Multi/Interdiscipline Study



University of Central Oklahoma

www.uco.edu

President
Patti Neuhold-Ravikumar

Governing Board
Regional University System of Oklahoma Board of Regents: Chair Connie Reilly, Vice Chair Jane McDermott, Secretary Amy Anne Ford, Susan Winchester, Chris Van Denhende, Lake Carpenter, Gary Parker, Eric Fisher and Joy Hofmeister

Accreditations
Higher Learning Commission (HLC), Accreditation Board for Engineering and Technology, American Board of Funeral Service Education, American Chemical Society, American Dietetic Association, American Speech-Language Association, Association of Collegiate Business Schools and Programs, Council for Interior Design Accreditation, National Council for the Accreditation of Education Preparation, National Association for the Education of Young Children, National Council on Family Relations, National League for Nursing, National Association of Schools of Music, Oklahoma Board of Nursing, Oklahoma Commission for Teacher Preparation, Professional Golfing Association of America, Commission on Accreditation of Athletic Training Education, National Association of Schools of Art and Design

Locations
Edmond, Downtown Oklahoma City

Founding Date
1890

Nickname/Mascot
Bronchos

2019-20 Enrollment
17,504

2019-20 Top-5 Majors
Business Management and Administration, Education, Health Professions, Visual and Performing Arts, Psychology





University of Oklahoma

www.ou.edu

President
Joseph Harroz Jr.

Governing Board
University of Oklahoma Board of Regents: Chair Michael A. Cawley, Vice Chair Frank Keating, Phil B. Albert, Natalie Shirley, Eric Stevenson, Anita L. Holloway and Rick Nagel

Accreditations
For a complete list of accreditations for the OU Norman campus, visit ou.edu/accreditation. For a complete list of accreditations for OU Health Sciences Center programs, visit ouhsc.edu/admissions.

Locations
Norman, Oklahoma City, Tulsa

Founding Date
1890

Nickname/Mascot
Sooners

2019-20 Enrollment
34,941

2019-20 Top-5 Majors
Business Management and Administration, Engineering, Health Professions, Biological Sciences, Communications



University of Science and Arts of Oklahoma*

www.usao.edu

President
John Feaver

Governing Board
University of Science and Arts of Oklahoma Board of Regents: Chair David McLaughlin, Vice Chair Chris Mosley, Secretary Cale Walker, David Ferrell, Diane Ming and Kelly Wilkerson

Accreditations
Higher Learning Commission (HLC), Council for the Accreditation of Educator Preparation, Council on the Education of the Deaf, National Association of Schools of Music, Oklahoma Office of Educational Quality and Accountability

Locations
Chickasha

Founding Date
1908

Nickname/Mascot
Drovers

2019-20 Enrollment
905

2019-20 Top-5 Majors
Visual and Performing Arts, Business Management and Administration, Biological Sciences, Education, Parks/Recreation/Fitness

*Oklahoma's Public Liberal Arts University



University of
**SCIENCE
& ARTS**
of Oklahoma



Western Oklahoma State College

www.wosc.edu

President
Chad Wiginton

Governing Board
Western Oklahoma State College Board of Regents: Chair Dr. Dana Darby, Vice Chair Debbie Cox, Secretary Susan Givens, Clint Abernathy, Justin Lewis, Rick Vernon and Robert Williams

Accreditations
Higher Learning Commission (HLC), Joint Review Committee on Education in Radiologic Technology, National League for Nursing, National Association for the Education of Young Children, Council of Law Enforcement Education and Training and Federal Aviation Administration

Locations
Altus, Altus Air Force Base, Elk City, Lawton

Founding Date
1926

Nickname/Mascot
Pioneers

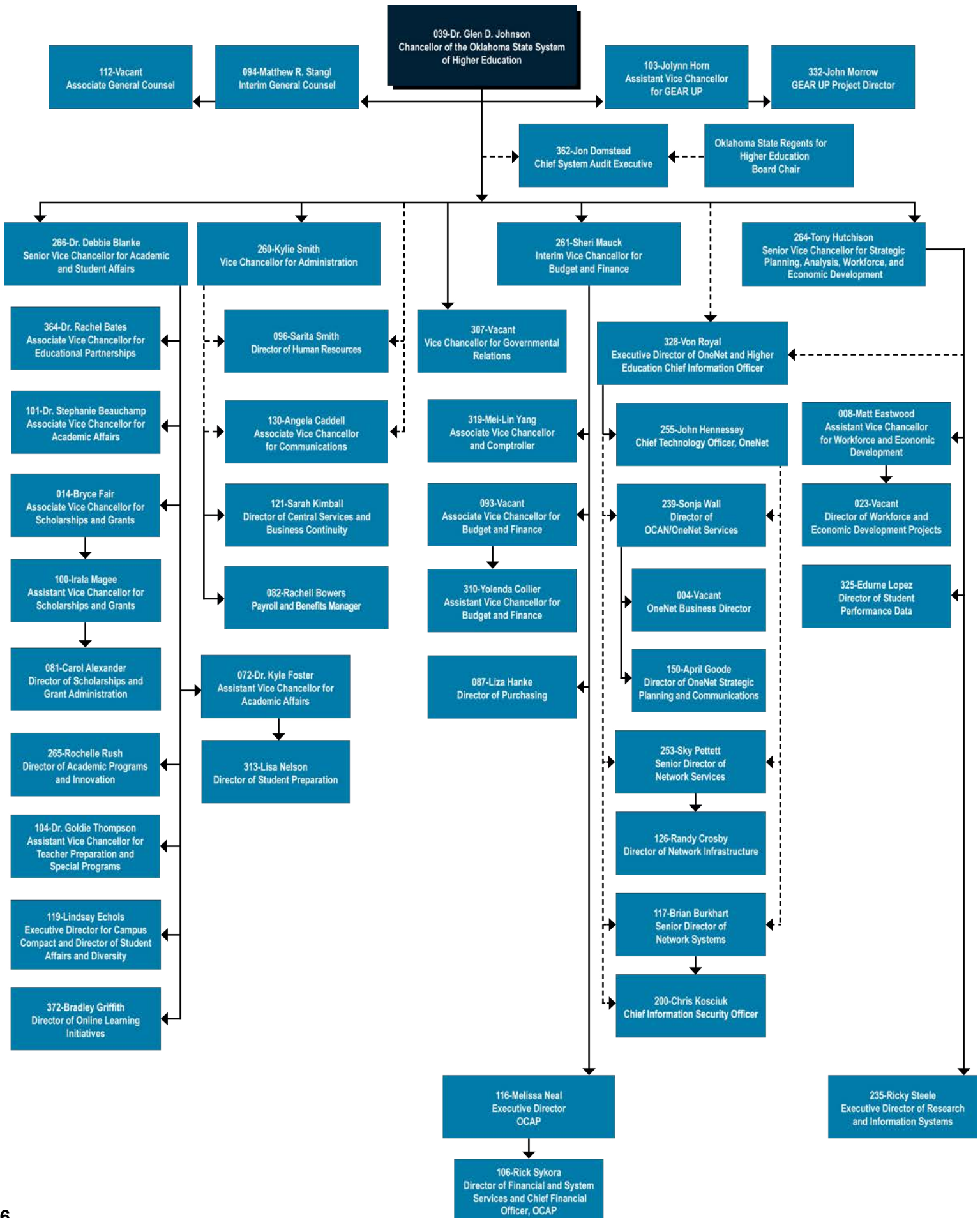
2019-20 Enrollment
1,737

2019-20 Top-5 Majors
Liberal Arts/General Studies, Health Professions, Business Management and Administration, Agriculture, Mathematics



ADMINISTRATIVE ORGANIZATION

as of June 15, 2021





OKLAHOMA STATE REGENTS FOR HIGHER EDUCATION

Improving our future by degrees

655 Research Parkway, Suite 200
Oklahoma City, OK 73104

Phone: 800.858.1840 or 405.225.9100

www.okhighered.org



Like us on Facebook

okcollegestart | okGearUp | OklahomaMoneyMatters | OklahomaTeacherConnection
okpromise | onenetok | reachhigheroklahoma | ReadySetRepay | UCanGo2



Follow us on Instagram

@ok_gearup



Follow us on LinkedIn

OneNet



Follow us on Twitter

@ok_gearup | @OKhighered | @OKMoneyMatters | @OneNetOK



Subscribe to our YouTube Channels

GEARUPOK | OKCollegeAssistance | Oklahoma State Regents | onenetok