

The logo for ATKINS, consisting of the word "ATKINS" in a bold, white, sans-serif font.

Member of the SNC-Lavalin Group

The background of the entire page is a composite image. In the upper left, a commercial airplane is shown in flight against a clear blue sky. The main part of the image is a large cargo ship at a port during sunset or sunrise. The ship's deck is stacked high with colorful shipping containers in shades of blue, orange, and yellow. The ship's hull is dark, and the water in the foreground is calm, reflecting the warm light of the sky. In the distance, port cranes and other ships are visible on the horizon.

Delivering borders of the future

Integrating world class security
and seamless border journeys

GET STARTED



The line that clearly defined the UK border has become increasingly blurred. Advances in technology have enabled us to expand our physical borders into the virtual world. So much so, that the process of entering or leaving the UK often starts long before we reach an air, rail or maritime port.

This merging of the physical and digital creates new opportunities for the organisations that manage our border, especially as we seek to reinforce the UK's position as a world-class trading, visitor, education and investment destination. And yet, progress has to be balanced with the need to protect our people, assets and systems from an increasing and evolving range of threats.

Atkins, a member of the SNC-Lavalin group, has been helping authorities, Governments and operators navigate the complex and critical border environment for more than 30 years. We're one of the world's most respected design, engineering and project management consultancies, and our knowledge and experience span the rail, aerospace, maritime, defence, highways, and physical and cyber security sectors.

1200		1210		1220		1230		1240		1250		1300		1310		1320		1330		1340		1350		1400		1410		1420		1430		1440		1450		1500		1510		1520		1530		1540		1550		1600		1610		1620		1630		1640		1650		1700		1710		1720		1730		1740		1750		1800		1810		1820		1830		1840		1850		1900		1910		1920		1930		1940		1950		2000		2010		2020		2030		2040		2050		2100		2110		2120		2130		2140		2150		2200		2210		2220		2230		2240		2250		2300		2310		2320		2330		2340		2350		2400		2410		2420		2430		2440		2450		2500		2510		2520		2530		2540		2550		2600		2610		2620		2630		2640		2650		2700		2710		2720		2730		2740		2750		2800		2810		2820		2830		2840		2850		2900		2910		2920		2930		2940		2950		3000		3010		3020		3030		3040		3050		3100		3110		3120		3130		3140		3150		3200		3210		3220		3230		3240		3250		3300		3310		3320		3330		3340		3350		3400		3410		3420		3430		3440		3450		3500		3510		3520		3530		3540		3550		3600		3610		3620		3630		3640		3650		3700		3710		3720		3730		3740		3750		3800		3810		3820		3830		3840		3850		3900		3910		3920		3930		3940		3950		4000		4010		4020		4030		4040		4050		4100		4110		4120		4130		4140		4150		4200		4210		4220		4230		4240		4250		4300		4310		4320		4330		4340		4350		4400		4410		4420		4430		4440		4450		4500		4510		4520		4530		4540		4550		4600		4610		4620		4630		4640		4650		4700		4710		4720		4730		4740		4750		4800		4810		4820		4830		4840		4850		4900		4910		4920		4930		4940		4950		5000		5010		5020		5030		5040		5050		5100		5110		5120		5130		5140		5150		5200		5210		5220		5230		5240		5250		5300		5310		5320		5330		5340		5350		5400		5410		5420		5430		5440		5450		5500		5510		5520		5530		5540		5550		5600		5610		5620		5630		5640		5650		5700		5710		5720		5730		5740		5750		5800		5810		5820		5830		5840		5850		5900		5910		5920		5930		5940		5950		6000		6010		6020		6030		6040		6050		6100		6110		6120		6130		6140		6150		6200		6210		6220		6230		6240		6250		6300		6310		6320		6330		6340		6350		6400		6410		6420		6430		6440		6450		6500		6510		6520		6530		6540		6550		6600		6610		6620		6630		6640		6650		6700		6710		6720		6730		6740		6750		6800		6810		6820		6830		6840		6850		6900		6910		6920		6930		6940		6950		7000		7010		7020		7030		7040		7050		7100		7110		7120		7130		7140		7150		7200		7210		7220		7230		7240		7250		7300		7310		7320		7330		7340		7350		7400		7410		7420		7430		7440		7450		7500		7510		7520		7530		7540		7550		7600		7610		7620		7630		7640		7650		7700		7710		7720		7730		7740		7750		7800		7810		7820		7830		7840		7850		7900		7910		7920		7930		7940		7950		8000		8010		8020		8030		8040		8050		8100		8110		8120		8130		8140		8150		8200		8210		8220		8230		8240		8250		8300		8310		8320		8330		8340		8350		8400		8410		8420		8430		8440		8450		8500		8510		8520		8530		8540		8550		8600		8610		8620		8630		8640		8650		8700		8710		8720		8730		8740		8750		8800		8810		8820		8830		8840		8850		8900		8910		8920		8930		8940		8950		9000		9010		9020		9030		9040		9050		9100		9110		9120		9130		9140		9150		9200		9210		9220		9230		9240		9250		9300		9310		9320		9330		9340		9350		9400		9410		9420		9430		9440		9450		9500		9510		9520		9530		9540		9550		9600		9610		9620		9630		9640		9650		9700		9710		9720		9730		9740		9750		9800		9810		9820		9830		9840		9850		9900		9910		9920		9930		9940		9950		10000		10010		10020		10030		10040		10050	
------	--	------	--	------	--	------	--	------	--	------	--	------	--	------	--	------	--	------	--	------	--	------	--	------	--	------	--	------	--	------	--	------	--	------	--	------	--	------	--	------	--	------	--	------	--	------	--	------	--	------	--	------	--	------	--	------	--	------	--	------	--	------	--	------	--	------	--	------	--	------	--	------	--	------	--	------	--	------	--	------	--	------	--	------	--	------	--	------	--	------	--	------	--	------	--	------	--	------	--	------	--	------	--	------	--	------	--	------	--	------	--	------	--	------	--	------	--	------	--	------	--	------	--	------	--	------	--	------	--	------	--	------	--	------	--	------	--	------	--	------	--	------	--	------	--	------	--	------	--	------	--	------	--	------	--	------	--	------	--	------	--	------	--	------	--	------	--	------	--	------	--	------	--	------	--	------	--	------	--	------	--	------	--	------	--	------	--	------	--	------	--	------	--	------	--	------	--	------	--	------	--	------	--	------	--	------	--	------	--	------	--	------	--	------	--	------	--	------	--	------	--	------	--	------	--	------	--	------	--	------	--	------	--	------	--	------	--	------	--	------	--	------	--	------	--	------	--	------	--	------	--	------	--	------	--	------	--	------	--	------	--	------	--	------	--	------	--	------	--	------	--	------	--	------	--	------	--	------	--	------	--	------	--	------	--	------	--	------	--	------	--	------	--	------	--	------	--	------	--	------	--	------	--	------	--	------	--	------	--	------	--	------	--	------	--	------	--	------	--	------	--	------	--	------	--	------	--	------	--	------	--	------	--	------	--	------	--	------	--	------	--	------	--	------	--	------	--	------	--	------	--	------	--	------	--	------	--	------	--	------	--	------	--	------	--	------	--	------	--	------	--	------	--	------	--	------	--	------	--	------	--	------	--	------	--	------	--	------	--	------	--	------	--	------	--	------	--	------	--	------	--	------	--	------	--	------	--	------	--	------	--	------	--	------	--	------	--	------	--	------	--	------	--	------	--	------	--	------	--	------	--	------	--	------	--	------	--	------	--	------	--	------	--	------	--	------	--	------	--	------	--	------	--	------	--	------	--	------	--	------	--	------	--	------	--	------	--	------	--	------	--	------	--	------	--	------	--	------	--	------	--	------	--	------	--	------	--	------	--	------	--	------	--	------	--	------	--	------	--	------	--	------	--	------	--	------	--	------	--	------	--	------	--	------	--	------	--	------	--	------	--	------	--	------	--	------	--	------	--	------	--	------	--	------	--	------	--	------	--	------	--	------	--	------	--	------	--	------	--	------	--	------	--	------	--	------	--	------	--	------	--	------	--	------	--	------	--	------	--	------	--	------	--	------	--	------	--	------	--	------	--	------	--	------	--	------	--	------	--	------	--	------	--	------	--	------	--	------	--	------	--	------	--	------	--	------	--	------	--	------	--	------	--	------	--	------	--	------	--	------	--	------	--	------	--	------	--	------	--	------	--	------	--	------	--	------	--	------	--	------	--	------	--	------	--	------	--	------	--	------	--	------	--	------	--	------	--	------	--	------	--	------	--	------	--	------	--	------	--	------	--	------	--	------	--	------	--	------	--	------	--	------	--	------	--	------	--	------	--	------	--	------	--	------	--	------	--	------	--	------	--	------	--	------	--	------	--	------	--	------	--	------	--	------	--	------	--	------	--	------	--	------	--	------	--	------	--	------	--	------	--	------	--	------	--	------	--	------	--	------	--	------	--	------	--	------	--	------	--	------	--	------	--	------	--	------	--	------	--	------	--	------	--	------	--	------	--	------	--	------	--	------	--	------	--	------	--	------	--	------	--	------	--	------	--	------	--	------	--	------	--	------	--	------	--	------	--	------	--	------	--	------	--	------	--	------	--	------	--	------	--	------	--	------	--	------	--	------	--	------	--	------	--	------	--	------	--	------	--	------	--	------	--	------	--	------	--	------	--	------	--	------	--	------	--	------	--	------	--	------	--	------	--	------	--	------	--	------	--	------	--	------	--	------	--	------	--	------	--	------	--	------	--	------	--	------	--	------	--	------	--	------	--	------	--	------	--	------	--	------	--	------	--	------	--	------	--	------	--	------	--	------	--	------	--	------	--	------	--	------	--	------	--	------	--	------	--	------	--	------	--	------	--	------	--	------	--	------	--	------	--	------	--	------	--	------	--	------	--	------	--	------	--	------	--	------	--	------	--	------	--	------	--	------	--	------	--	------	--	------	--	------	--	------	--	------	--	------	--	------	--	------	--	------	--	------	--	------	--	------	--	------	--	------	--	------	--	------	--	------	--	------	--	------	--	------	--	------	--	------	--	------	--	------	--	------	--	------	--	------	--	------	--	------	--	------	--	------	--	------	--	------	--	------	--	------	--	------	--	------	--	------	--	------	--	------	--	------	--	------	--	------	--	------	--	------	--	------	--	------	--	------	--	------	--	-------	--	-------	--	-------	--	-------	--	-------	--	-------	--



Delivering borders of the future

We're supporting the organisations that enable the flow of people and goods across our border.

Digital Twin

We improve operational effectiveness, reporting and control by creating digital twins of infrastructure and leveraging our world leading digital engineering and Building Information Management expertise. Drawing on our deep experience of information management and suite of digital tools we can help you build and deliver the benefits of a digital twin.

Sustainability planning

Ports need detailed plans for sustainability, adopting green energy sources, providing facilities green shipping, and testing and delivering green innovation.

Integrated security

We integrate the latest cargo and baggage scanning security with advanced biometric identification and authentication to improve the level of security and provide regulatory compliance.

Digital integration

We integrate digital systems and operations for Government ensuring the best intelligence is made available to maintain security and drive efficiency. We work with new and legacy technology to maximise ROI.

Government

We help governments plan for the future by developing new places and strengthening existing connections to promote economic development and help improve people's quality of life.

Seamless traveller journey

Our teams are enabling seamless passenger journeys to improve people's experience at the border. We integrate biometric technology and use modelling to optimise passenger and cargo flow.

Integrated transport

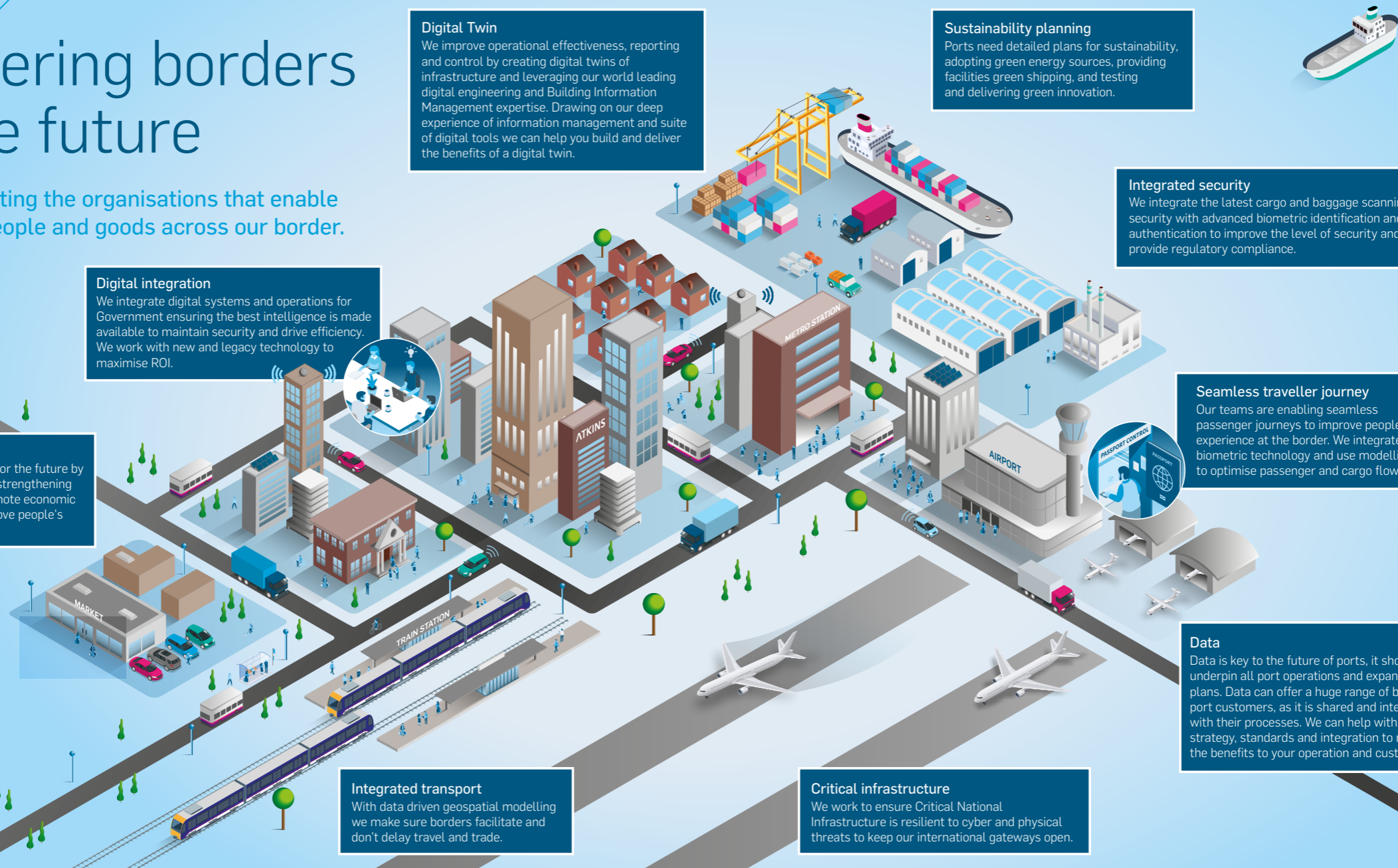
With data driven geospatial modelling we make sure borders facilitate and don't delay travel and trade.

Critical infrastructure

We work to ensure Critical National Infrastructure is resilient to cyber and physical threats to keep our international gateways open.

Data

Data is key to the future of ports, it should underpin all port operations and expansion plans. Data can offer a huge range of benefits to port customers, as it is shared and integrated with their processes. We can help with data strategy, standards and integration to maximise the benefits to your operation and customers.





A secure border

We're using the breadth and depth of our expertise to support the organisations that are securing and managing our borders.

Many of the organisations that work at our international gateways perform a critical role – they secure our borders – and they're under more pressure than ever before. We're uniquely placed to help them identify and combat attempts to subvert border controls. Our teams will work alongside organisations to model passenger and cargo movements and put the right interventions and alerts in place to detect and address threats. We're the largest supplier of client-side advisory services to the UK's security and intelligence sector, and we work closely with Heathrow Airport Limited and a number of other air and sea ports.

- > Passenger, cargo and traffic flow modelling.
- > The integration of identification, and cargo and baggage scanning technology.
- > Enabling intelligent risk management.
- > Developing resilience in critical operating environments.



Resilient physical and digital operations

Our air, rail, and maritime ports are complex, fast-moving and critical environments that are sensitive to disruption. Bad weather can bring activity to a sudden halt and, with the increasing reliance on digital connectivity, we are reliant on the flow of data across Cyber space, which exposes us to greater risk.

We support organisations throughout the life cycle of a project – helping you design-in resilience from the outset or mitigate risk and minimise downtime in established operations. We'll use our experience of working on some of the UK's largest and most complex digital and infrastructure projects to help you protect physical assets and ensure digital systems remain operational in the event of an attack. We're a recognised supplier of cyber security services to government, including the Ministry of Defence.

- > Protecting your physical and digital assets, including through Critical Vulnerability Investigations.
- > Engineering and cyber security expertise.
- > Business continuity planning.





Enhanced passenger experience

A record number of people crossed the UK border in 2019. First impressions of the UK count and that's why we're working with high profile transport operators to create a seamless passenger experience.

They choose to work with us because of our in-depth understanding of the border environment and regulations, which drives our ability to design, implement and deploy advanced technologies, including automated biometric identity management solutions. We've successfully integrated new and legacy systems and processes, and introduced them into some of the busiest environments in the world.



- > Designing for a seamless passenger experience.
- > Solutions that enable faster identification and authentication.
- > Faster and more secure processing of cargo and luggage.
- > Successfully embedding new processes and systems that help to enhance the UK's appeal as a trade and visitor destination.



Efficient cargo handling

The benefits of quick and secure identification and processing extend to cargo too. Advances in technology can enable, detailed supply chain information and seamless tracking, which means authorities can improve targeting of checks at, or away from, the border and reduce delays for low risk cargo.

Through our global experience and work with international regulatory authorities we can help to design and deliver systems that will enable this straight-through processing and help to protect and increase revenue by making declaration and payment easier. We can design your target operating model to facilitate stronger collaboration and information sharing between departments or organisations, and help you invest in the right technology, delivering better access to intelligence and greater insight.

- > Target operating model development.
- > Design of systems to track materials and goods through the manufacture process through to export and make declaration and payment easier.
- > Design of data standards and interfaces to integrate government and supply chain data.



Improved data management

Authorities at the border aren't just managing more people and cargo, they're also collecting and analysing more data. Our teams will help to maximise the benefits of emerging technologies, including artificial intelligence and machine learning, without putting sensitive information at risk.

We'll work with you to ensure compliance with General Data Protection Regulation (GDPR) and the Network and Information Systems (NIS) Regulations for the operators of our critical national infrastructure. We'll help you focus investment and interventions in the right areas, so you benefit from greater efficiency, and work within the legislation to maximise security.

- › Maintaining compliance with important legislation, including GDPR and NIS Regulations.
- › Transforming organisations to generate intelligence from meaningful data
- › Agile discovery and development of data and risk services in high security environments.



Future proofing


The way we manage the border is changing. Changes in the economic or political landscape, technological advancements and societal opinions all affect operations. We'll help you ensure you have the flexibility to function effectively even in times of uncertainty.

The increasing use of technology, including digital twins, can help you navigate change and accommodate growth. We can test a large number of scenarios in a virtual environment before making changes to the physical asset or infrastructure. We can also help you see how disruption, including automation, will impact on your operations and revenue.

- › Digital twin technology to help you understand the impact of your decisions on existing infrastructure.

- › Change programme planning and management.






Advanced technical solutions

Automation can help to improve security and make it quicker and easier to carry out identity checks at the border. We've developed biometric security management software, we call it our Identity Management Toolkit (IDMT), to automate this security process.

Our identity management software installed at Heathrow Airport checks 40 million passengers per year and has been praised for its simplicity and the efficiencies it has delivered.

IDMT is design to integrate with a wider range of the latest and legacy technology, integrating systems to increase the accuracy of ID checks and improving the efficiency of business processes, leading to more positive identification of fraudulent and non fraudulent identities.

- 
- > The use of biometric sensors reduces instances of human error, and saves time and money.
 - > It works seamlessly with existing exit control systems.
 - > Approved for use by UK Border Force.



Freeport planning and design

Border crossing points are closely connected to the communities that surround them, and as the economic environment changes, these places and spaces also have to be re-invented and rejuvenated.

The UK Government believes freeports will help our recovery from the COVID-19 pandemic and contribute to the levelling up agenda, bringing new jobs, investment and hotbeds of innovation to the areas surrounding our air, rail and maritime ports. We'll help you plan and design all aspects of the freeport including its strategy, business organisation, business case, infrastructure masterplan, detailed design, and Net Zero and social value initiatives.

We'll work with a wide range of stakeholders to draw together infrastructure, digital, transport, skill and housing plans into a single strategy that delivers the freeport vision and explore the possibilities of new industries, for example, Net Zero technologies. Our strategic thinking, programme management and design heritage experience will help you bring your vision for the area to life in a way that enriches the region and promotes social cohesion.

- > Strategy and master planning
- > Business case and planning
- > Programme and project management
- > Net Zero analysis and design





The border of the future

The way we think about our international gateways is being transformed – by political, economic and environmental factors, and by technology. At Atkins, we believe in embracing innovation to meet the challenges of tomorrow and to ensure we continue to evolve as a trading and visitor destination.


But we also know we have to balance progress against the risks new processes and technologies expose us to. We have decades of experience of applying new ideas and delivering without disruption in complex and critical environments. That means we can help you ensure the promise of technology is indeed reflected in the real world.



Get in touch



Richard Gutsell
Client Director at Atkins
and a Borders and
Identity Specialist


EMAIL 

Richard is a Client Director and a Borders and Identity Management specialist with a breadth of experience across Government and Commercial sectors. For 20 years Richard has been enabling organisations in the security sector to deliver their core missions whilst providing the appropriate level of security and resilience.

Richard has worked on some of the most exciting Borders and Identity projects in the UK and Internationally and is passionate about delivering borders which enable seamless trade and travel whilst improving security and resilience.



John Drever
Technical Director
for Future Borders
at Atkins

EMAIL 

John is Technical Director for Future Borders in Atkins. He has a multidisciplinary background in consultancy, project management, enterprise architecture and innovation for mission critical systems.

In his 30 year career John has focussed on complex projects ranging from border systems to military planning and intelligence and fighter aircraft.

ATKINS

Member of the SNC-Lavalin Group

More information:



snclavalin.com

atkinsglobal.com

