



The start of a new generation.
Experience more.

Dentsply Sirona
Sirona Dental Systems GmbH
Fabrikstraße 31, 64625 Bensheim, Germany
dentsplysirona.com

THE DENTAL
SOLUTIONS
COMPANY™



Technical changes and errors reserved. Order no. A91100-M47-C249-01-7600 USA. Printed in Germany. OEW

Clinical Procedures

- Preventive
- Restorative
- Orthodontics
- Endodontics
- Implants
- Prosthetics

Platform Technologies

- CAD/CAM
- Imaging
- Treatment Centers
- Instruments

THE DENTAL
SOLUTIONS
COMPANY™



Dentsply Sirona Imaging Solutions

Axeos.
Experience the difference.

dentsplysirona.com/axeos



reddot winner 2020



Experience the best of 3D and 2D – in one device

With Axeos, a new generation of imaging solutions has arrived.

We understand that building a successful practice requires more than just the state-of-the-art technology. We believe progress comes from technology and people – working together seamlessly. To make a difference.

It's a difference to be felt not at some distant point in the future, but today, and every day that follows it. And you won't feel this difference on your own, in a small X-ray room, but connected both to your entire practice and all of your devices. For the confidence and motivation of your whole team, helping you build a healthy practice by enabling patient-centered experiences, greater practice efficiency, and the opportunity for procedural expansion.

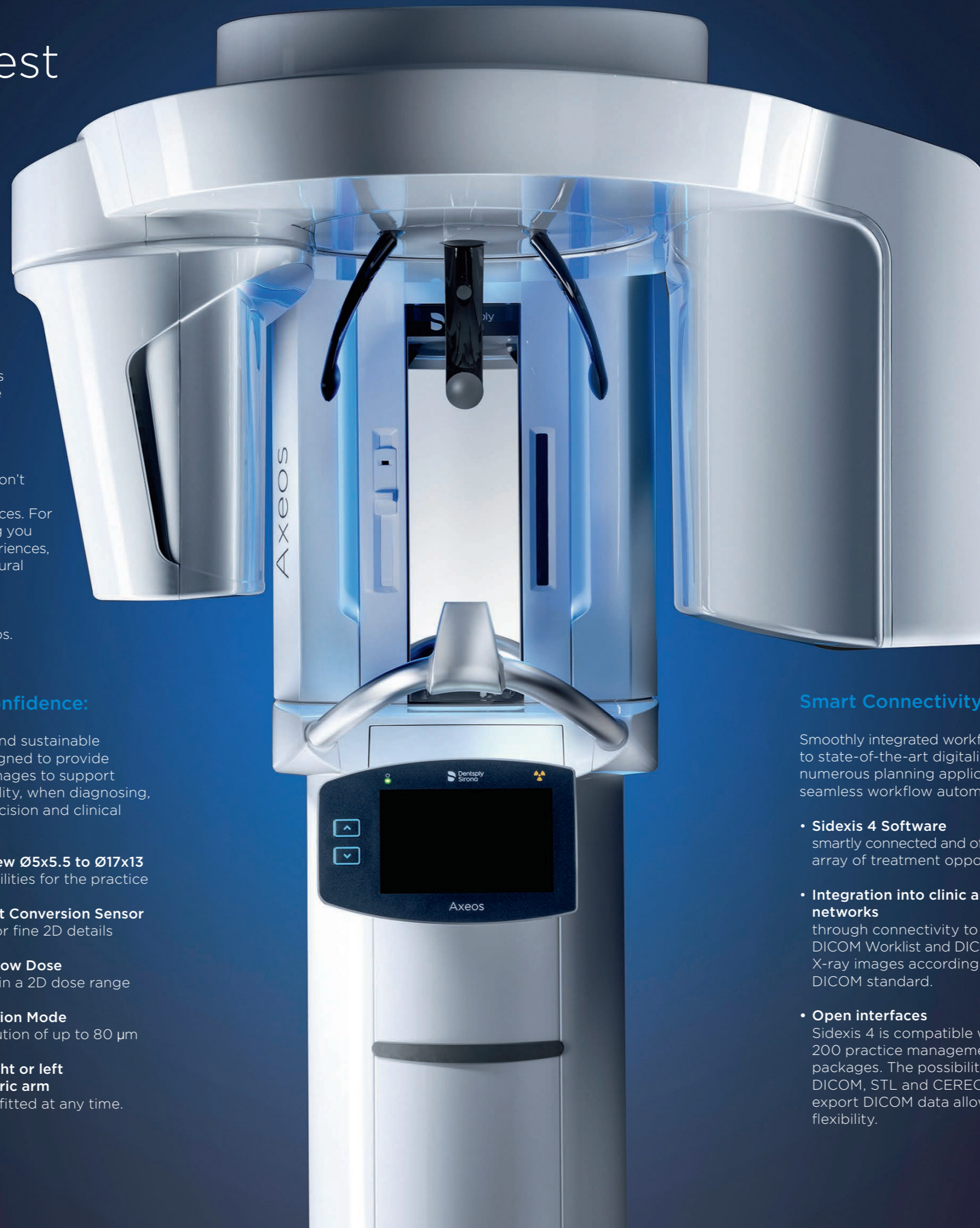
The next generation of progressive imaging is here. It's time to experience the difference. Start now. With Axeos.

Features which bring our values to life

Clinical Confidence:

High quality and sustainable solutions designed to provide exceptional images to support greater reliability, when diagnosing, treatment precision and clinical safety.

- **Fields of View Ø5x5.5 to Ø17x13**
more possibilities for the practice
- **DCS – Direct Conversion Sensor**
sharpness for fine 2D details
- **Intelligent Low Dose**
3D imaging in a 2D dose range
- **High Definition Mode**
with a resolution of up to 80 µm
- **Optional right or left cephalometric arm**
can be retrofitted at any time.



Smart Connectivity:

Smoothly integrated workflows, thanks to state-of-the-art digitalization, numerous planning applications and seamless workflow automation.

- **Sidexis 4 Software**
smartly connected and offers a broad array of treatment opportunities.
- **Integration into clinic and DSO networks**
through connectivity to PACS, RIS, DICOM Worklist and DICOM Printers. X-ray images according to the DICOM standard.
- **Open interfaces**
Sidexis 4 is compatible with over 200 practice management software packages. The possibility to import DICOM, STL and CEREC data or export DICOM data allows for high flexibility.

Exceptional Experience:

Individual, innovative design and ease of use support the practice team to work more efficiently, to reduce sources of error and provide a comfortable patient experience.

- **EasyPad**
intuitive use with self-explaining symbols
- **PIA – Patient Positioning & Image Assistant**
smart height adjustment reduces waiting time for patients and unique auto-positioner for reproducible image quality
- **Integrated Cabinet**
with Ambient Light for accessory storage

See more with 3D

Additional possibilities for your practice

3D images are invaluable in a variety of clinical tasks, e. g. overlaid teeth, unexpected canals, hidden roots or orthodontic surgery.



The right Field of View (FoV) for every case

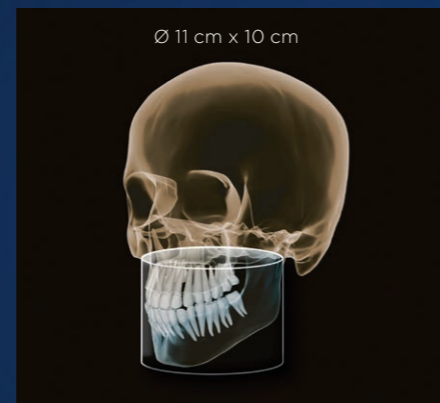
Examine a precise area with a FoV of Ø 5 cm x 5,5 cm or evaluate the complete dentition including temporomandibular joints with Ø 17 cm x 13 cm.



For local findings e.g. for endodontic issues or single implants.




Capturing the lower and upper jaw dentition, e.g. for planning multiple implants.



Shows the complete dentition, including wisdom teeth.

The desired mode can be easily selected with a single click.

-  High Definition (HD)
-  Standard Definition (SD)
-  Low Dose (Low)



Best image quality 17x13

Exemplary Indications:

- TMJ diagnostics
- Orthodontic treatment planning
- Orthognathic surgery planning
- Upper airway segmentation considering TMJ position

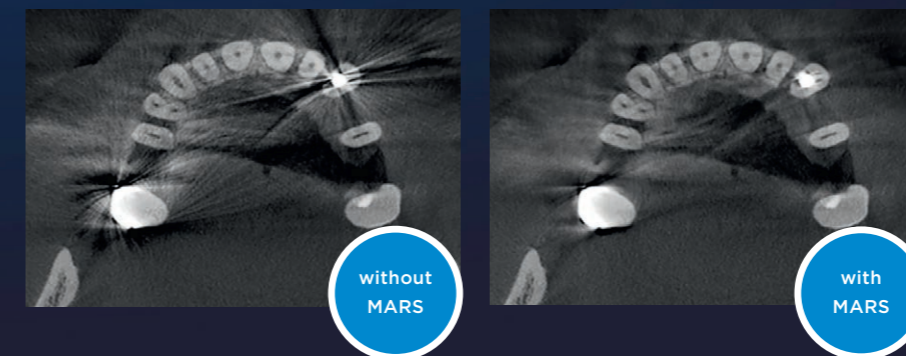
Captures the complete dentition including both temporomandibular joints and the cranial base, defined by nasion and sella.
Schematic representation

High Definition Mode (HD)

All Dentsply Sirona 3D X-ray systems offer you the High Definition Mode (HD), in which up to 1,400 individual images are captured during a single rotation and converted into a 3D volume with up to 80 µm. The advantage for you: low-noise images in high resolution.

MARS - Metal Artifact Reduction Software

Metal artifacts are often a challenge in 3D X-ray imaging. MARS automatically reduces metal artifacts, and can therefore help to facilitate with a quality diagnosis. At Dentsply Sirona, MARS is a standard integration in all 3D solutions.



For the best 2D results

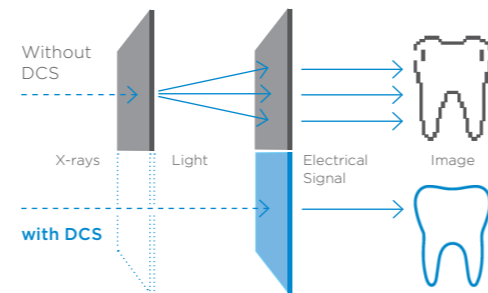
Digital panoramic imaging

Digital imaging in 2D offers unbeatable benefits for every dental practice. DCS, Autofocus and other highlights for reliable high-quality images.

DCS - Direct Conversion Sensor

The Direct Conversion Sensor (DCS) has revolutionized the standard of panoramic imaging. X-rays are converted directly into electrical signals. Thus, there is no signal loss due to light conversion, as is the case with conventional systems.

The result: images with a high level of sharpness and contrast - even at an extremely low radiation dose. For accurate diagnostic information to support targeted treatment.



Autofocus

The right focus is crucial for excellent panoramic radiographs. And with the autofocus function you will automatically receive an image with the best possible sharpness in focus.

Quickshot

Quickshot reduces the exposure time and thus, the dose. This makes it a valuable feature for all practices, especially those working with a large number of pediatric patients.

Extraoral Bitewing

This allows for extraoral images to be created of both the posterior and anterior regions. The program with the dedicated curve also supports working with patients who have a gag reflex, which often makes capturing intraoral radiographs difficult.

Pediatric

The program is adapted specifically to the anatomy of young patients. For dose reduction, it is reduced both horizontally and vertically, while still providing a high degree of sharpness.



Highly specialized - for every type of expert

Treatment for orthodontics, implantology, sleep apnea and endodontics

Orthodontics

Versatility, dedicated low dose programs and high image quality are just a few of the characteristics that make Axeos the perfect partner for your practice. In Orthodontics, they offer safe and efficient treatment using the ALARA principle - and support you in reaching an accurate diagnosis efficiently and with optimal clinical support. Clear case presentation helps improve overall patient communication and treatment acceptance.



Axeos offers images perfectly suited for orthodontic treatment planning.

SureSmile® Aligner

At Dentsply Sirona we don't just design individual units, but seamless solutions to support the entire workflow. With SureSmile, you have a clear aligner solution available that allows you to reliably satisfy your patients' desire for a beautiful smile. Getting started is easy and with more than 20 years of experience in digital planning of orthodontic treatments, we can provide you the security of excellent initial setups and predictable, compelling results.



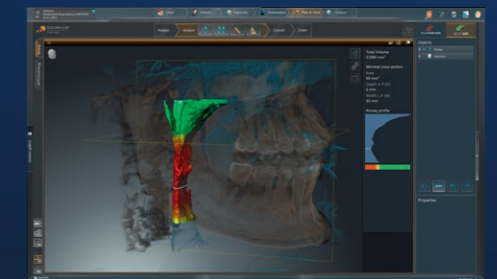
SICAT Implant

Implantology made easy

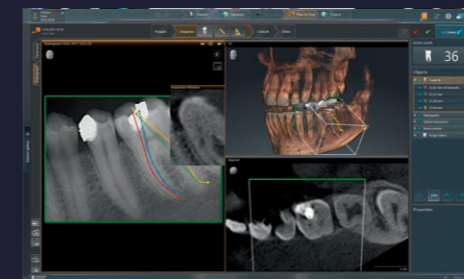
It is important that your implant is placed in an ideal position to ensure a successful prosthetic outcome. This will help to shorten implant procedures and avoid surgical errors. Supported by CAD/CAM scan data and CBCT images from your Axeos, in addition to the SICAT Implant 2.0 implant planning software, you can design and produce surgical guides completely in-house, or outsourced to your local lab or centralized SICAT lab.

Sleep apnea treatment

SICAT Air is the first all-digital 3D software solution for upper airway analysis and splint therapy of obstructive sleep apnea. Offer upper airway analysis, treatment planning and the possibility of an OPTISLEEP protrusion guide all in a single session.



SICAT Air



SICAT Endo

3D Endodontics

Does your practice offer endodontic treatments? This can often come with many challenges. Emergency patients, elusive canals and unpredictable curvatures are just a few challenges you might be faced with. 3D imaging visualizes hidden structures, reveals clinical issues and makes it possible to identify the most efficient treatment approach.

Always in sync with your practice

Sidexis 4 imaging software: connecting the dots

Imaging processing software provides everything to detect, diagnose and discuss treatment planning.

Modern, intuitive design
Sidexis 4 offers a complete modern and clean look. Beyond the impressive esthetics, the new software also boasts an intuitive operating approach and clear design. The Timeline function offers you an easy-to-navigate patient diagnosis and treatment history.

Compare
Sidexis 4 compares two CBCT images or up to four 2D images simultaneously. For example, you can navigate through both volumes at the same time, obtain cross-comparisons at a glance and provide clear patient communication and case presentation.

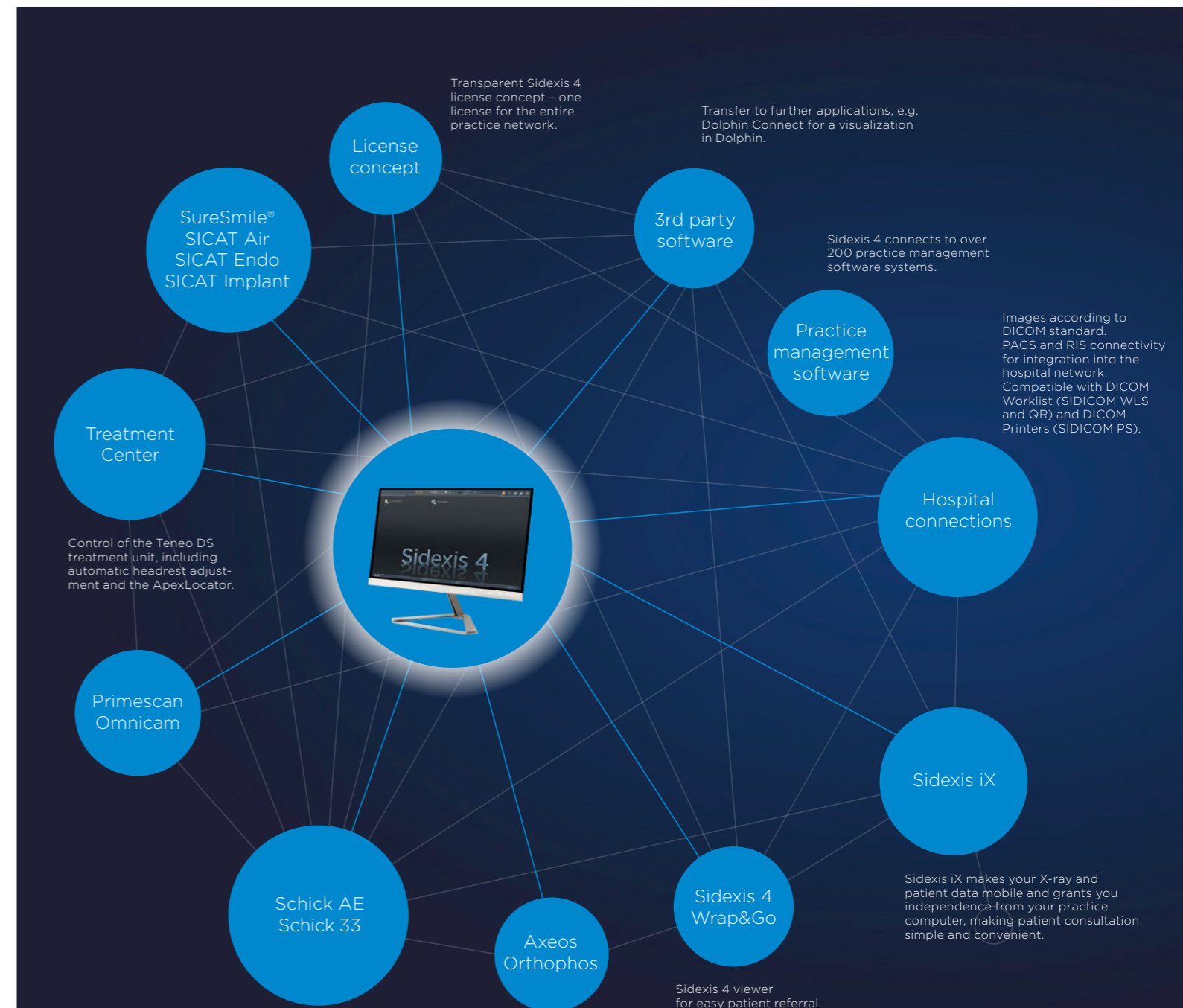
Seamless 2D/3D
With Sidexis 4, you can view 2D and 3D data simultaneously and side by side without switching between programs. This saves you valuable time and cross-comparisons provide you with increased confidence in your final diagnosis and treatment plan.



For a seamless flow – fully integrated solutions

Smart connectivity for a smart practice

Sidexis 4 is characterized by numerous well-thought-out interfaces and connectivity of devices and software products. With our software, you can make full use of the digital potential of your practice while simplifying and accelerating virtual communication channels. In this way, you become the architect of your own practice environment.



Simplicity meets efficiency

Operating and positioning aids

Correct patient positioning leads to high image quality to support an accurate diagnosis and facilitates an improved patient experience

PIA – Patient Positioning & Image Assistant

PIA is a 10-point concept for easy patient positioning and X-ray imaging. PIA is primarily about two things: high image quality and comfort for the patient and the assistant.

- ▶ The EasyPad allows you the ability to pivot and tilt the touch display and also provides intuitive program selection
- ▶ Motorized, adjustable headrest with automatic stop at the patient's head and automatic opening at the end of image capture
- ▶ Unique autopositioner automatically determines the correct head tilt.
- ▶ Light lines for easy visibility of the volume
- ▶ The X-ray area can be easily adapted using the universal bite block, which allows for modification on an individual patient-to-patient basis
- ▶ The smart height adjustment allows the preparation of the X-ray unit before the patient arrives
- ▶ Integrated swivel mirror supports proper patient positioning
- ▶ Automatic spine compensation for better panorama image quality in the anterior region
- ▶ Based on the automatic temple width measurement the device rotation adjusts to each individual patient
- ▶ Ergonomic handles to support stable patient positioning



Barrier-free positioning



Intuitive EasyPad.

Progressive, puristic and safe

Designed to inspire

Dentsply Sirona develops solutions that harmoniously combine functionality and esthetics. Focusing on the essentials, the devices are both puristic and clean in their design.

Premium materials and production processes have elevated the level of disinfection possible due to the durability and chemicals that can be used to clean the unit without causing erosion:

- ▶ Smooth, easy-to-wipe surfaces
- ▶ Removable, autoclavable components allow for easy and efficient cleaning processes and elevated hygiene practices
- ▶ Single-use bite tabs help to eliminate cross-contamination risks due to their one-time use
- ▶ What's more, automated and remote functions facilitate limited direct patient contact

Axeos integrates easily into any room concept and are accessible without barriers. It fits into the Orthophos units footprint and is individually configurable.. And because we want to ensure that the patient is as comfortable as possible, we have developed Axeos with focus not only on the ergonomic and clinical elements, but with additional esthetic elements to help increase patient relaxation while in the unit - which is why we have added an integrated light concept, creating a more tranquil device atmosphere.



reddot winner 2020



Ambient Light with a selection of 35 colors.



Integrated cabinet on the right and left side of Axeos.

PC Requirements

Requirements for Sidexis 4

Specification for one server and an unlimited number of workstations.

| | Sidexis 4 Server | Min. for 2D Workstation | Min. for 3D Workstation |
|-------------------|--|---|---|
| Operating system* | Windows Server 2008 R2 Windows Server 2012 R2 Windows Server 2016 Windows Server 2019 | Windows 8.1 Pro (64 bit) Windows 10 Pro (64 bit) | Windows 8.1 Pro (64 bit) Windows 10 Pro (64 bit) |
| CPU | ≥ 2.3 GHz QuadCore Processor with 64 bit (x64) | ≥ 2 GHz DualCore | ≥ 2.3 GHz QuadCore Processor with 64 bit (x64) |
| RAM | ≥ 8 GB | ≥ 4 GB | ≥ 8 GB |
| Graphic card | any | any | any |
| DirectX | DirectX 10 with WDDM 1.0 or higher driver | DirectX 9.0c | DirectX 10 with WDDM 1.0 or higher driver |

* For 64-bit operating systems, installation under Boot Camp is also approved.

Requirements for one RCU computer

Specification for only one computer needed to allow device integration in your practice.

| | Axeos |
|-------------------|---|
| Operating system | Windows 10 (64 bit) |
| RAM | 16 GB |
| CPU | ≥ 2.3 GHz QuadCore Processor 64 bit with SSE3 support (Intel i73xx or comparable) |
| Hard drive | ≥ 2 TB |
| Graphic | DirectX 11-graphic adapter (min. 4 GB RAM) |
| Screen resolution | Minimum 1280 x 1024 pixel Recommended 1600 x 1200 pixels |

* Panorama editor.

Further information at www.sidexis.com/systemrequirements
System requirements for the hardware used may vary.