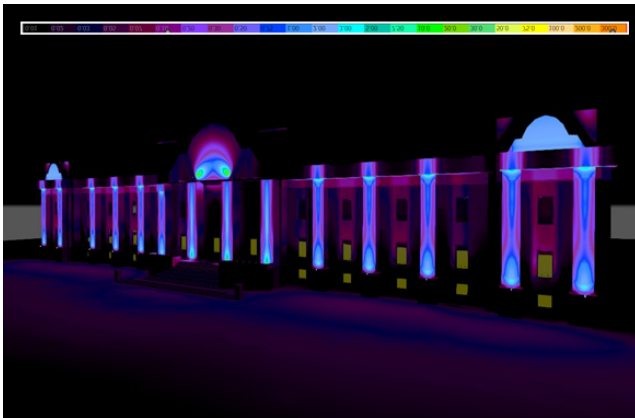
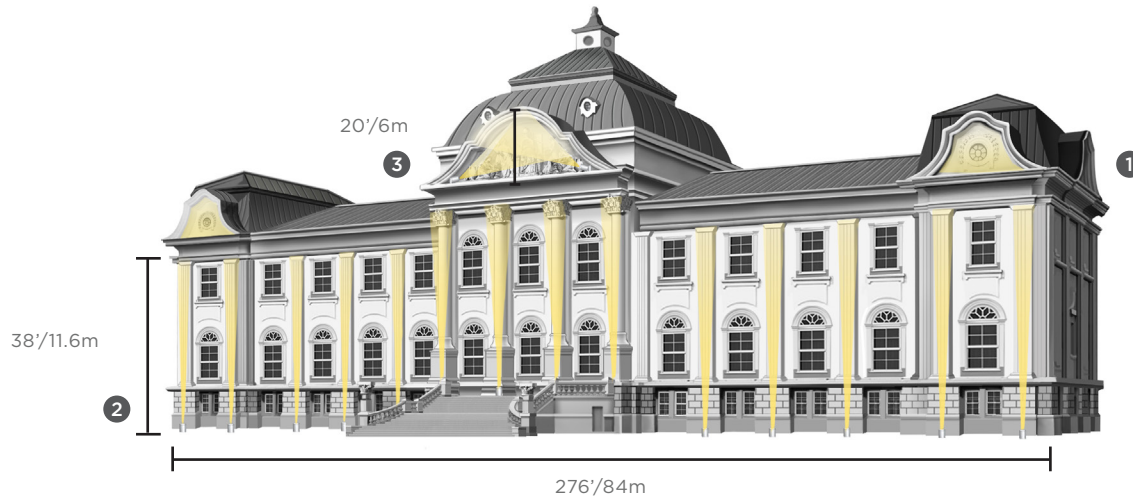


ECOSENSE®

DESIGN GUIDE



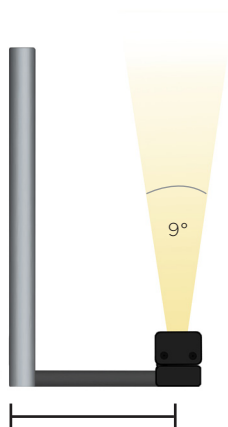
False Color Illuminance Rendering

### ACCESSORIES

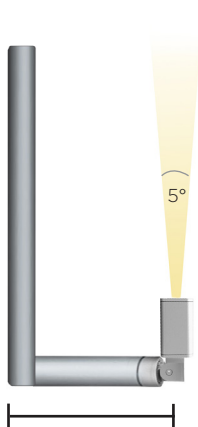
1. TROV Fine Adjustment bracket (MNT-L-FAB)  
TROV Asymmetric Louver (LV-L50-ASYM)
2. Rise F080 Ground Stake (F080-LS-1S- STK-12)  
Rise F080 Half Snoot (F080-H-X)
3. Rise Canopy Plate (Rise-Canopy-04-X)

# ARCHITECTURAL FEATURES - RISE AND TROV

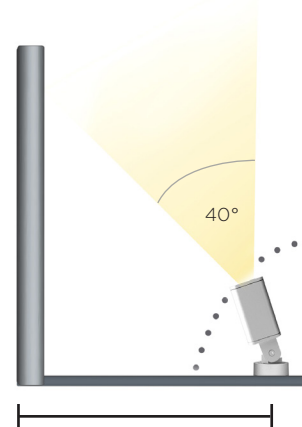
**ARCHITECTURAL FEATURES.** Illuminating columns and features adds unique prominence to a building. Grazing columns with a narrow beam achieves uniformity and a powerful effect. Architectural pediment scenes benefit most with wide angle flood lighting that washes the scene with minimal shadowing and contrast.



Set Back : 12" / 300mm



Set Back : 12" / 300mm  
Accessories numbers 1-3



Set Back : 18" / 450mm

## 1 PEDIMENT

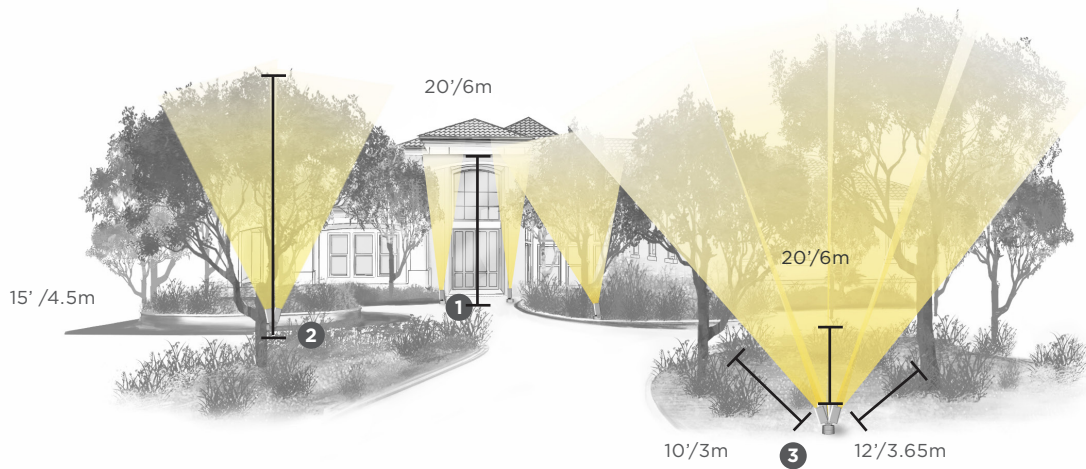
- Product : TROV L50 30K
- Lumens : 102 Lms / LF
- Set Back : 12" / 300mm
- Beam Angle : 9x29 Degree
- Aiming Angle : 0 Degree
- Average on Target: 2fc/22 1x

## 2 COLUMNS

- Product : RISE F080 30K
- Lumens : 746 Lms
- Set Back : 12" / 300mm
- Beam Angle : 5 Degree
- Aiming Angle : 0 Degree
- Midway @ Center: 2fc/22 1x

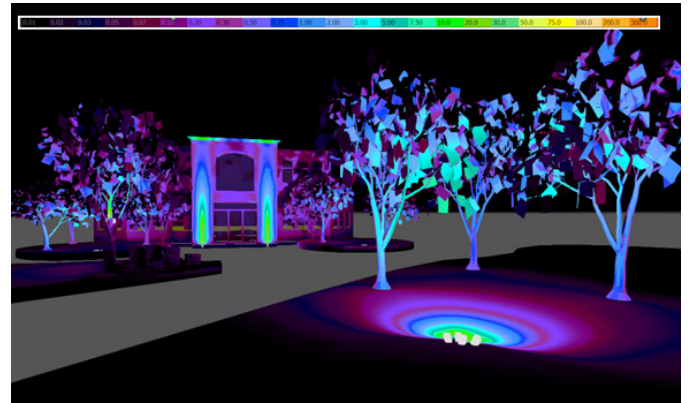
## 3 PEDIMENT

- Product : 2 QTY RISE F080 30K
- Lumens : 746 Lms
- Set Back : 18" / 450mm
- Beam Angle : 40 Degree
- Aiming Angle : 10 Degree
- Average on Target: 10fc/108 1x



## ACCESSORIES

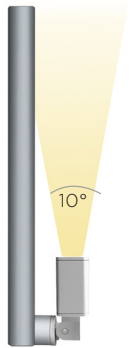
1. Rise F080 Ground Stake (F080-LS-1S-STK-12)  
Rise F080 Half Snoot (F080-H-X)
2. Rise Tree Mount(Rise-TMS-TB-VIS3)  
Rise F080 Full Snoot (F080-F-X)
3. Rise F080 Ground Stake (F080-LS-1S-STK-12)  
Rise Canopy Plate (Rise-Canopy-04-X)



False Color Illuminance Rendering

# LANDSCAPE LIGHTING – RISE

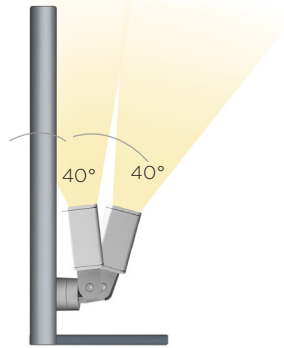
**LANDSCAPE SCENES.** Layered lighting creates drama and beauty in a landscape scene. Wide angle floodlighting that subtly illuminates foliage along with narrow beam accent lighting on a building adds dimension and personality to an environment.



Set Back :

## 1 FACADE

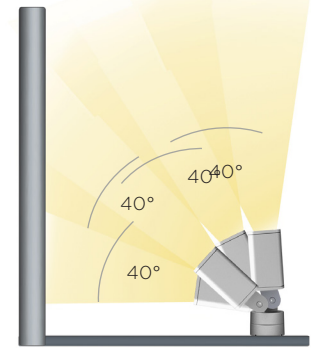
- Product : RISE F080 30K
- Lumens : 542 Lms
- Set Back : 12"/300mm
- Beam Angle : 10 Degree
- Aiming Angle : 0 Degree
- Top/Mid/Bottom: 10/3/15fc  
(108/32/161 1x)



Set Back : Tree Mount

## 2 TREE LIGHTING

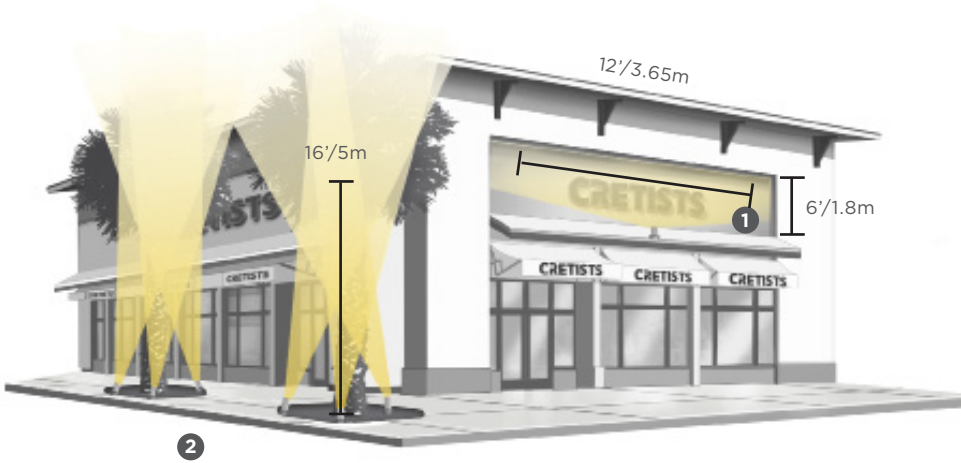
- Product : RISE F080 DUO 30K
- Lumens : 310 Lms
- Set Back : Tree Mount
- Beam Angle : 40 Degree
- Aiming Angle : Varies to cover foliage
- Range: 1-5fc  
(10-270 1x)



Set Back : 10'-20' Ground Stake, 3-6m

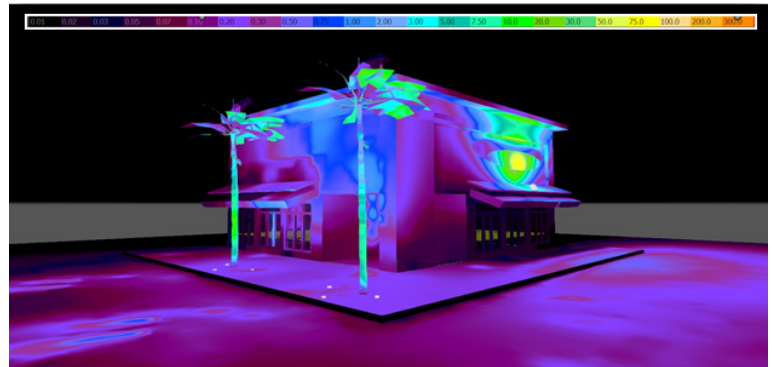
## 3 LANDSCAPE LIGHTING

- Product : RISE F080 QUAD 30K
- Lumens : 542 Lms
- Set Back : 10'-20', Ground Stake (3-6m)
- Beam Angle : 40 Degree
- Aiming Angle : Varies to cove foliage
- Average on Target: 3fc/32 1x



## ACCESSORIES

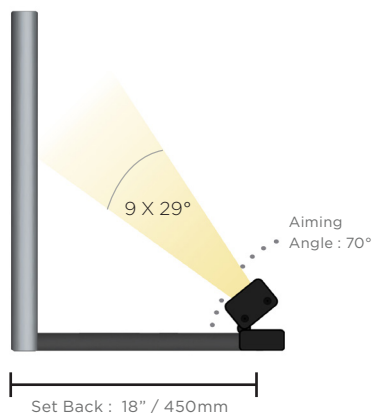
1. Rise F170 18" Wall Mount Arm (F170-WMA-18-X)
2. Rise F080 Ground Stake (F080-LS-1S-STK-12)  
Rise F080 Full Snoot (F080-F-X)



False Color Illuminance Rendering

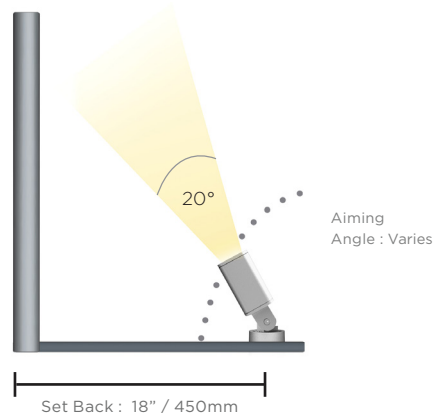
# STOREFRONT LIGHTING – RISE & TROV

**STOREFRONT LIGHTING.** Effective storefront lighting entices visitors, drives revenue and is energy-efficient. Signage should be lit completely with bright and uniform light. Uplight trees with a narrow flood to emphasize the texture of the tree and highlight branches creating the effect of a light canopy.



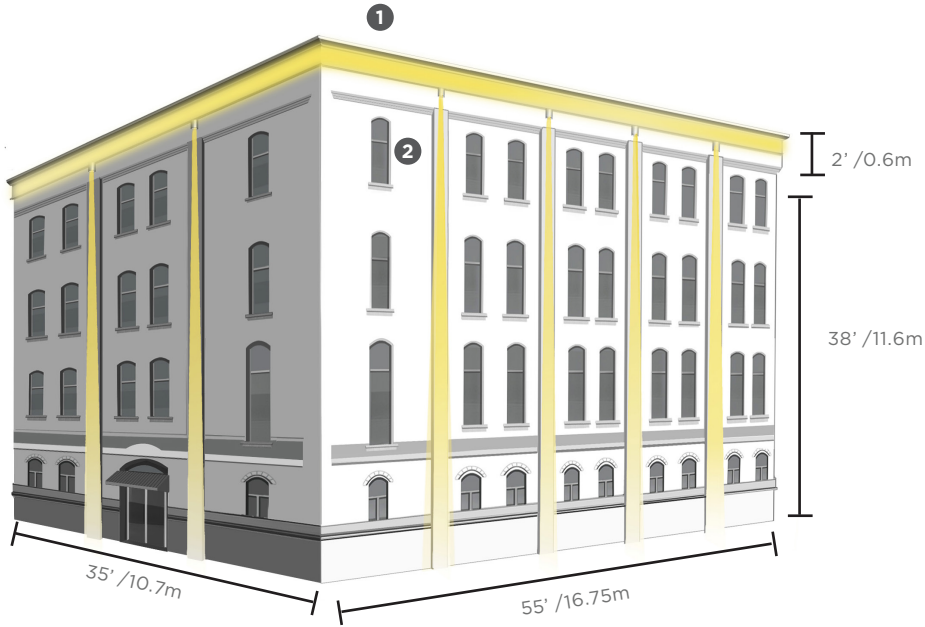
## 1 SIGNAGE LIGHTING

- Product : TROV L50 30K
- Lumens : 300 Lms / FT
- Set Back : 30" / 760mm
- Beam Angle : 9x29 Degree
- Aiming Angle : 70 Degree
- Levels on Sign: 10-20fc  
(108-216 1x)



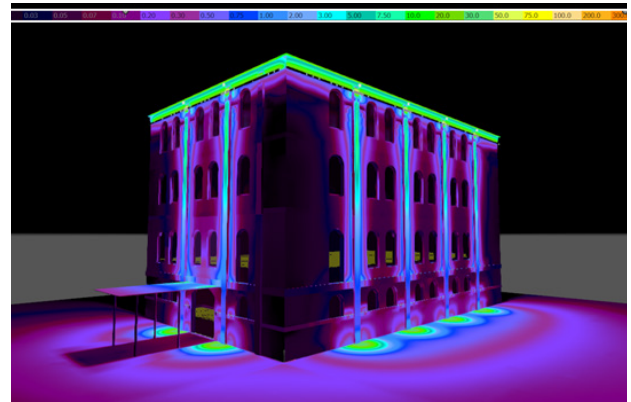
## 2 TREE LIGHTING

- Product : RISE F080 30K
- Lumens : 746 Lms
- Set Back : 18" / 450mm
- Beam Angle : 20 Degree
- Aiming Angle : Varies to cover foliage
- Top/Mid/Bottom: 10/2/5fc  
(22-108 1x)



## ACCESSORIES

1. TROV 90 Degree L Bracket (MNT-L-LBKT)
2. Rise F080 6" Wall Mount Arm (F080-WMA-06-X)  
Rise F080 Half Snoot (F080-H-X)

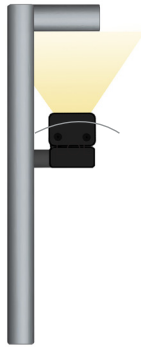


False Color Illuminance Rendering



# ARCHITECTURAL LIGHTING – RISE AND TROV

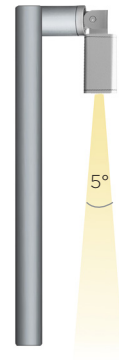
**ARCHITECTURAL LIGHTING.** Architectural facades can be transformed from ordinary to extraordinary using spot or accent lighting. A diffused linear accent light that accentuates a key feature brightens up a building's facade easily. Down lighting vertical architectural designs with tight beams of light adds instant drama and excitement for better visual appeal.



Set Back : Surface Mount

## 1 FRIEZE ACCENT

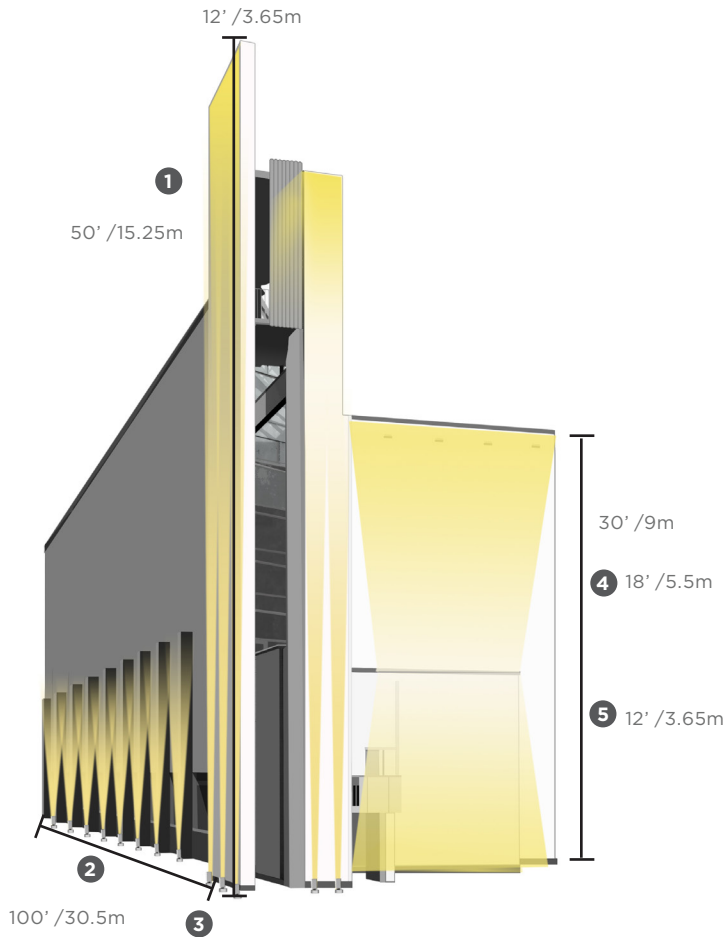
- Product : TROV LOL 2W 3000K
- Lumens : 60 Lms/ft
- Set Back : Surface Mount
- Beam Angle : LOL
- Aiming Angle : 180 Degree
- Average on Target: 10fc/108 1x



Set Back : 6" / 150mm

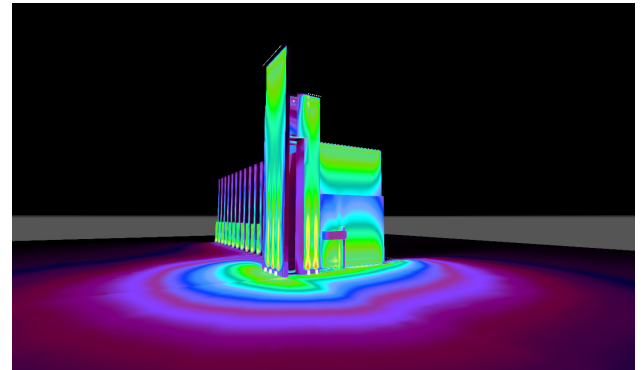
## 2 ARCHITECTURAL FEATURE

- Product : RISE 080 3000K
- Lumens : 746 Lms
- Set Back : 6" / 150mm
- Beam Angle : 5 Degree
- Aiming Angle : 0 Degree
- Top/Mid/Bottom: 8/4/1fc  
(86/43/11 1x)



## ACCESSORIES

1. TROV 12" Wall Mount Arm (WMA-L-CA-12)  
TROV Asymmetric Louver (LV-L50-ASYM)
2. Rise F080 Ground Stake (F080-LS-1S-STK-12)  
Rise F080 Full Snoot (F080-F-X)
3. Rise F170 Ground Stake (F170-LS-1S-STK-12)  
Rise F170 Full Snoot (F170-F-X)
4. TROV 6" Wall Mount Arm (WMA-L-CA-06)
5. TROV Landscape Stake (LS-L-STK-06)

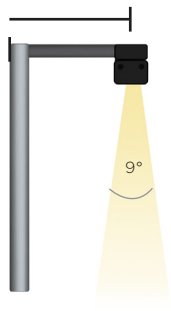


False Color Illuminance Rendering

# FACADE LIGHTING – RISE AND TROV

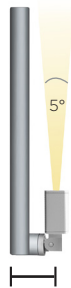
**FACADE LIGHTING.** Architecture comes to life with narrow beam grazing and wall-wash lighting. Up lighting and downlighting methods transform an average building into an iconic landmark.

Set Back : 12"



## 1 FACADE GRAZE DOWNLIGHT

- Product : TROV L50 30K
- Lumens : 925 Lms/LF
- Set Back : 12" Wall Arm
- Beam Angle : 9 x 29 Degree
- Aiming Angle : 0 Degree
- Average @ Top: 15fc/160 1x



## 2 COLUMN ACCENT

- Product : RISE F080 30K
- Lumens : 746 Lms
- Set Back : Surface Mount
- Beam Angle : 5 Degree
- Aiming Angle : 180 Degree
- Average @ Centerline: 15fc/160 1x

Set Back : Surface Mount

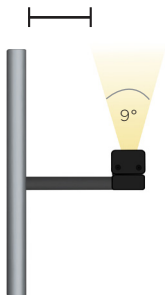


## 3 FACADE GRAZE UP LIGHT

- Product : RISE F170 3000K
- Lumens : 3060 Lms
- Set Back : 6" Arm
- Beam Angle : 5 Degree
- Aiming Angle : 180 Degree
- Average @ Bottom: 15fc/160 1x

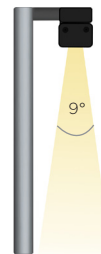
Set Back : 6"

Set Back : 6"



## 4 FACADE GRAZE UP LIGHT

- Product : TROV L50 30K
- Lumens : 448 Lms
- Set Back : 6" Mounting Arm
- Beam Angle : 9x29 Degree
- Aiming Angle : 180 Degree
- Average: 10fc/108 1x



## 5 FACADE GRAZE DOWNLIGHT

- Product : TROV L50 30K
- Lumens : 448 Lms
- Set Back : 6" Mounting Arm / 150mm
- Beam Angle : 9x29 Degree
- Aiming Angle : 0 Degree
- Average @ Bottom: 8fc/86 1x

# FLAG ILLUMINATION - RISE

**FLAG ILLUMINATION.** Effective flag illumination utilizes 3 or 4 fixtures with overlapping beam patterns to catch the pole from the ground (allowing viewers to have a visual path to the flag) to the flag at any position on the compass, or when hanging directly down.

**NOTES:**

Distance from Flag Pole indicated on X-Axis

Height of Flag Pole indicated on right Y-Axis

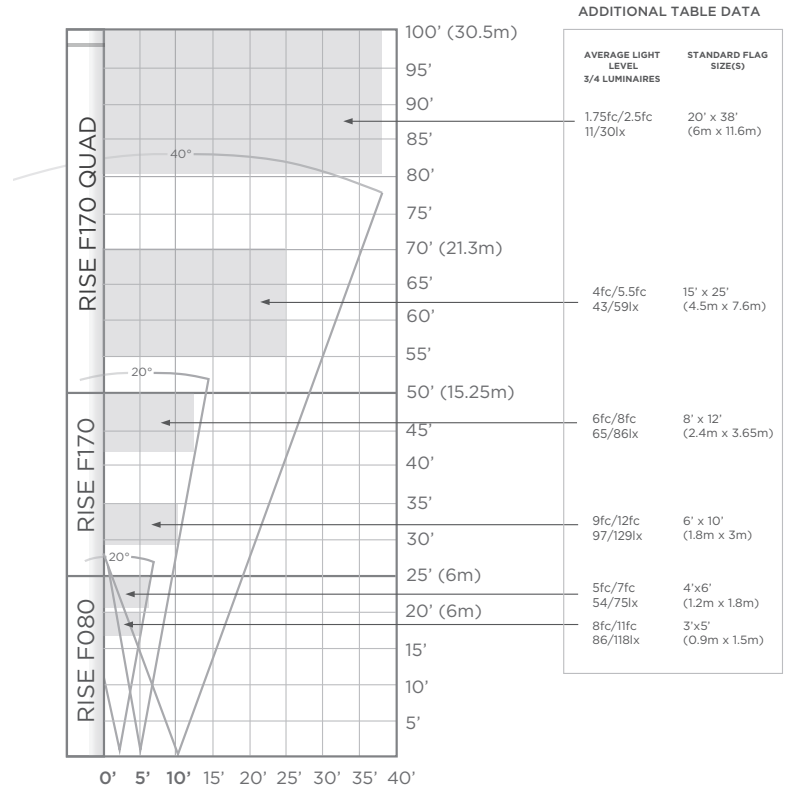
**Standard Flag size(s)** located at standard flag pole height for size.

Recommended Rise type indicated on left Y-Axis

Preferred Layout is (3) or (4) uplights arranged evenly about, and centered on the pole.

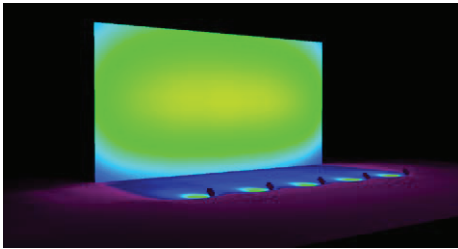
**Average Light Levels (fc)** indicated in flag area for (3)/(4) luminaires.

All Rise flag uplights presented as High Output, 4000k



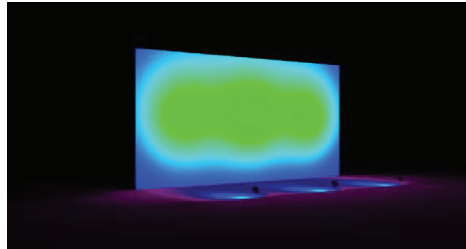
# FACADE LIGHTING – RISE F080 1S HO

**WALL/SIGN ILLUMINATION.** Illuminating a surface with RISE may be accomplished with a range of beam angles and output levels depending on the size of the wall and the setback.



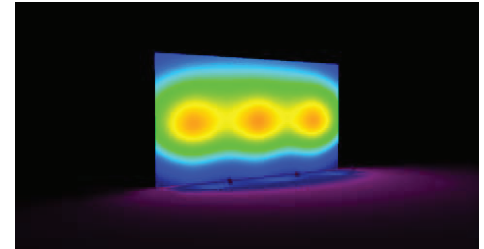
40'(12m) x 20' (6m) Wall/Sign

Power/Beam: 38W/40 deg.  
Spacing: 8ft. (2.4m)  
Offset: 20ft. (6m)  
Max. (fc/lux): 8/86  
Min. (fc/lux): 4/43  
Avg. (fc/lux)/: 6/64



40'(12m) x 20' (6m) Wall/Sign

Power/Beam: 38W/30x60 deg.  
Spacing: 8ft. (2.4m)  
Offset: 10ft. (3m)  
Max. (fc/lux): 20/215  
Min. (fc/lux): 5/54  
Avg. (fc/lux)/: 10/108



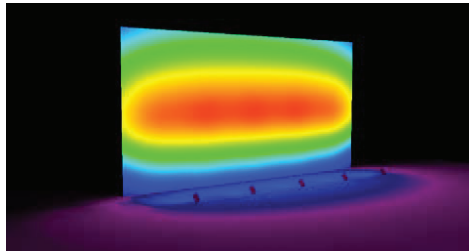
40'(12m) x 20' (6m) Wall/Sign

Power/Beam: 38W/10x60 deg.  
Spacing: 8ft. (2.4m)  
Offset: 5ft. (1.5m)  
Max. (fc/lux): 25/270  
Min. (fc/lux): 2/22  
Avg. (fc/lux)/: 10/108



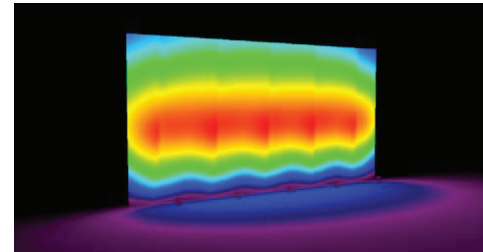
# FACADE LIGHTING – RISE F080 1S HO 40

**WALL/SIGN ILLUMINATION.** Illuminating a surface with RISE may be accomplished with a range of beam angles and output levels depending on the size of the wall and the setback.



20'(6m) x 10' (3m) Wall/Sign

Power/Beam: 12W/40 deg.  
Spacing: 6ft. (1.8m)  
Offset: 5ft. (1.5m)  
Max. (fc/lux): 5/54  
Min. (fc/lux): 3/38  
Avg. (fc/lux)/: 3.5/108



20'(6m) x 10' (3m) Wall/Sign

Power/Beam: 12W/30x60 deg.  
Spacing: 6ft. (1.8m)  
Offset: 5ft. (1.5m)  
Max. (fc/lux): 15/162  
Min. (fc/lux): 4/43  
Avg. (fc/lux)/: 6/65

