

DIY SKATEPARKS BY SPOHN RANCH

made of the highest quality materials
designed by skatepark experts
assembled by our veteran shop
shipped to your site
easily installed by your staff
immediately ready to skate



What is a DIY Skatepark?



Everyday prices are constantly on the rise, especially in the construction sector.

Raw materials have been on the rise for years and, like many industries, skatepark construction has been affected by these continuous price increases. Most skatepark companies have developed secondary product lines designed to meet lower price points. Unfortunately, many have compromised quality, durability, and safety.

At Spohn Ranch, we want every park we build to be the highest quality possible. Instead of using inferior materials to lower our prices, we have found an alternate approach that saves money without compromising our products and values. Our engineering, design and financial staff have been working overtime to create a totally new way for cities and private skatepark owners to purchase professional grade skatepark equipment without the cost and complexity of onsite construction.

The DIY concept involves shipping all of the skate elements directly to the site completely ready

to skate. All components are pre-assembled or pre-cast to the same high standards as our large scale skateparks. All fabrication and assembly are done by the veteran Spohn Ranch shop in controlled factory conditions.

Spohn Ranch will provide detailed instructions to ensure that all components are spaced for optimum flow and skateability. When the skate elements arrive on site, you'll only need a forklift and two local workers to offload the equipment.

The end result is that you save money on skatepark installation.

The resources that normally would have gone towards an install crew's airfare, lodging, & other installation expenses can now be spent on additional skate elements. This easy installation is only made possible due to the "bullet-proof" quality of Spohn Ranch's equipment.

We're working with many townships and skate park committees to use the DIY Skatepark approach to build new skate parks or freshen up existing parks with a second phase. Most groups are using resources such

as their Public Works departments or local construction companies willing to donate the machinery and labor to get these installs completed at minimum cost.

We want you to get the most "bang for your buck" and focus your budget where it should be - on the equipment.

An additional benefit is that all Spohn Ranch DIY skateparks are reconfigurable and (to a certain degree) portable. When you're ready for a larger skatepark, all pieces can be moved to the new park -- resulting in no wasted money on temporary solutions.

The following pages go into a little more detail as to how easy and simple it is for you to accomplish your own DIY Skatepark. Please contact Spohn Ranch at 877-489-3539 or your local representative for further details, current pricing, or to answer any questions you may have.

Spohn Ranch looks forward to making your skatepark become a reality.



D SKATEPARK PROCESS

DESIGN

We recommend that you consult with your community's skaters and bikers to create a design. Use the components starting on page 7 as building blocks. We also have an extensive library with designs for every user type, slab size and budget.

PURCHASE

Use the order form at the end of this document to order your pieces. Payment terms for municipalities are 30 days net. Non-government purchases require payment before shipping.

SHIPPING

Lead time for most orders is 2-5 weeks. The skate elements will arrive at your site on a flat-bed truck.

INSTALLATION

A typical DIY park installation requires:

- Asphalt or concrete slab with sufficient space for design.
- 2 skilled workers for approximately 1 hour each per skate piece.
- 1 forklift with 8000 lb. capacity warehouse style lift with 6' long forks (no fork extensions).
- 4 sets of 2" x 27' ratchet straps (or equivalent).
- SDS gun with 1/2" masonry bit (only needed for installation of grind rails)
- Standard screw gun (only needed for approach plates on ramps)



WHY BUY FROM SPOHN RANCH?

1. Experience

- ✔ Over 425 skateparks built since 1993.
- ✔ Builder of the X-Games
- ✔ 125 years of combined skatepark experience

2. Selection

- ✔ 3 industry leading skatepark lines
- ✔ Top designer of plaza, bowl and hybrid parks
- ✔ Skateable art and site amenities

3. Reliability

- ✔ Bonded and insured for E&O, Liability and Worker's Comp
- ✔ Best warranty in the business
- ✔ Member of ASTM committee on skatepark standards



DIY DESIGN CONCEPT

SMALL CONCRETE PLAZA

With minimal investment, an unused corner of a city park can become a skatespot and after-school space for dozens of skaters and their friends. The real street elements seen below are accessible to beginner skaters while still providing challenges to more advanced street skaters.



While we encourage communities to confer with local skaters to design a DIY park, we have an extensive library of fabricated, concrete and hybrid designs for every site and budget.

SPOHN RANCH DIY PRODUCT LINE BENEFITS

SPOHNCRETE

- Double-reinforced high-strength precast concrete
- 6" stainless-steel edge protection
- Superior resistance to the elements
- Precise molds insure perfect finish & dimensions
- Smooth-sliding stainless-steel edging
- 15-Year Limited Warranty

HD: HEAVY DUTY

- High-strength galvanized steel structure
- Integrated support frame guard rails
- Stainless-steel hardware
- Double thickness (1/2") Skatelite Pro
- Perforated aluminum substrate
- Galvanized structure prevents corrosion
- 20-Year Limited Warranty

TRUERIDE

- ACQA-treated lumber frame
- Galvanized handrails & edge protection
- Stainless-steel hardware
- Skatelite Pro with minimal seams
- Sound-dampening substrate
- Graffiti resistant
- Completely enclosed structure
- 10-Year Limited Warranty



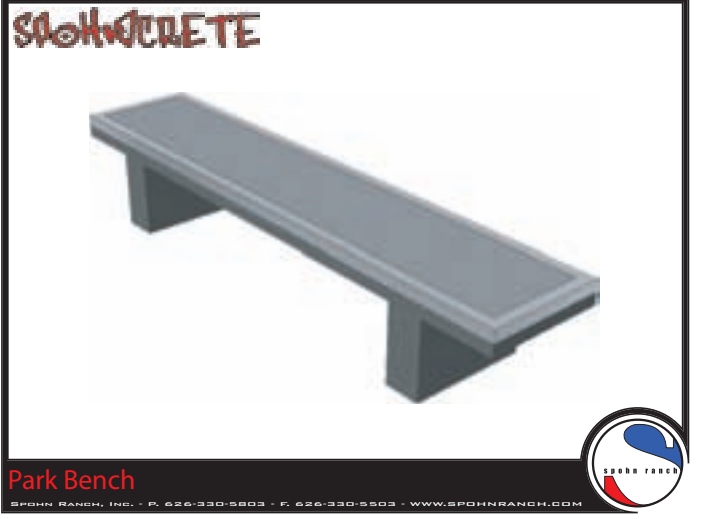
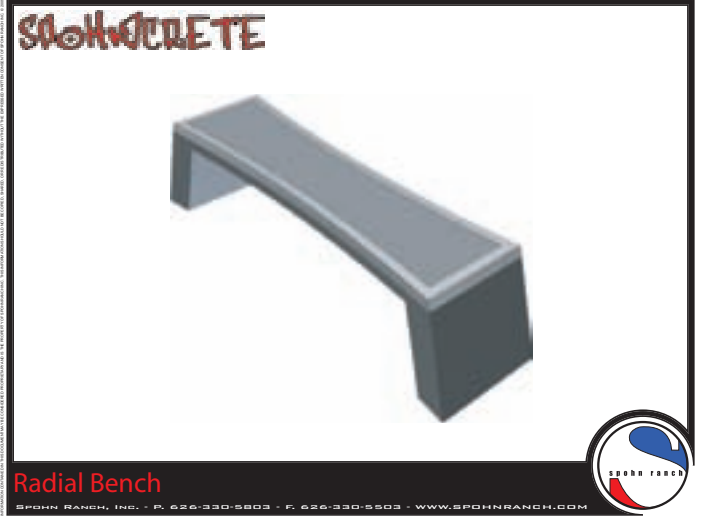
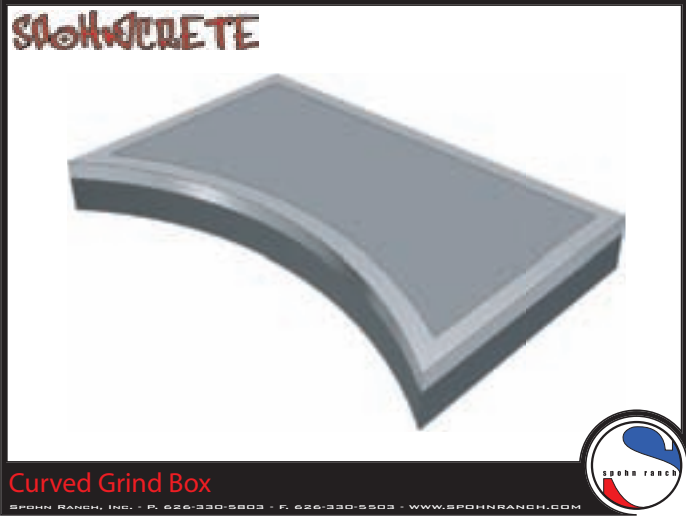
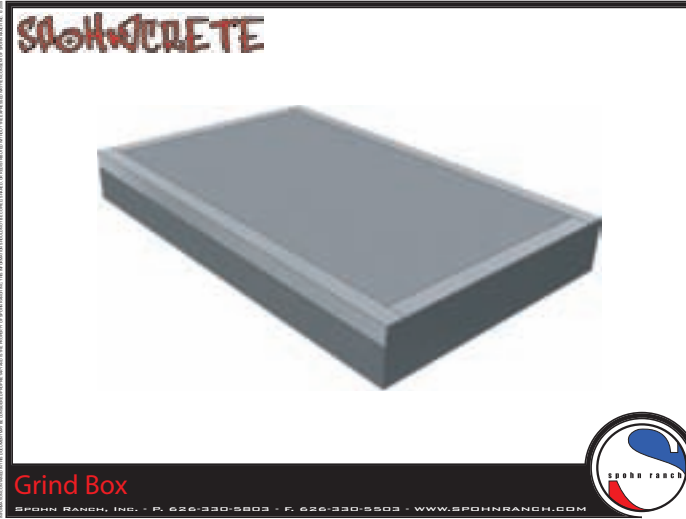
A TRADITION OF QUALITY

Spohn Ranch has been a supplier of products and services for today's fastest growing action sports in the US and around the world since 1993. We design and build custom action sports for municipalities and private parties domestically and internationally. We also manufacture custom structures for the world's top profession skateboard, BMX bike and inline skate competitions, demonstrations, and special events.



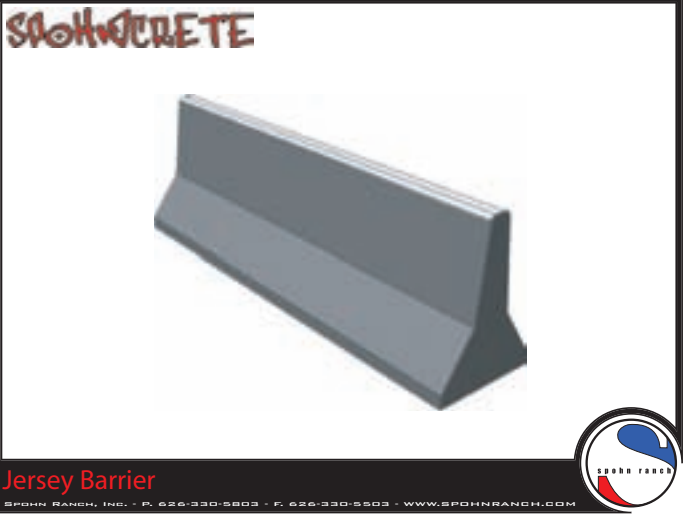
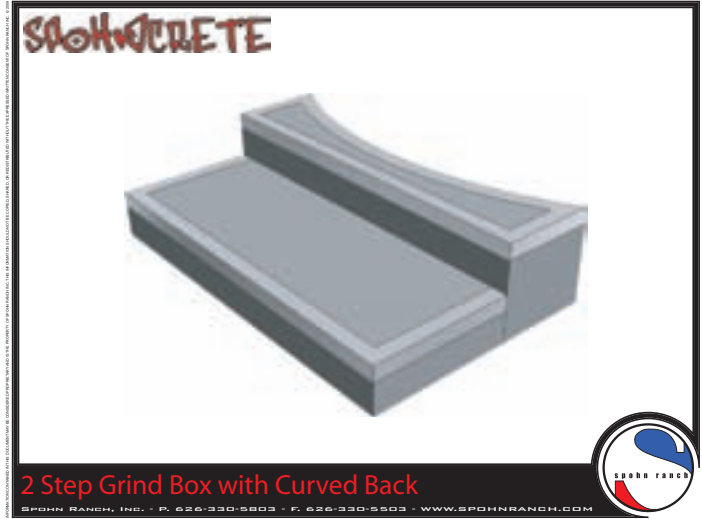
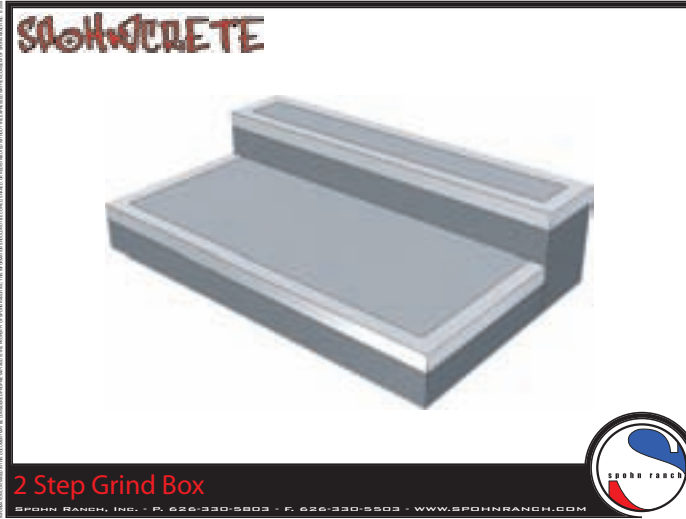
Always committed to creating positive action sports communities, Spohn Ranch has created the DIY Skatepark Program to insure that every budget and every site can have the highest quality, longest lasting equipment.

CONCRETE DIY SKATE ELEMENTS



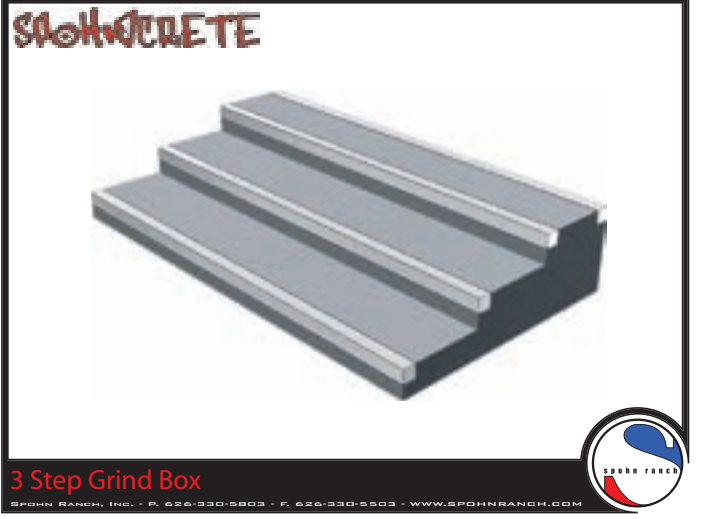
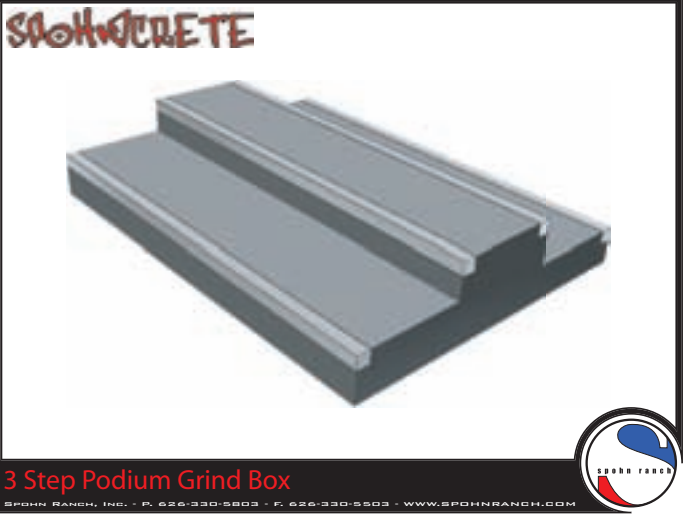
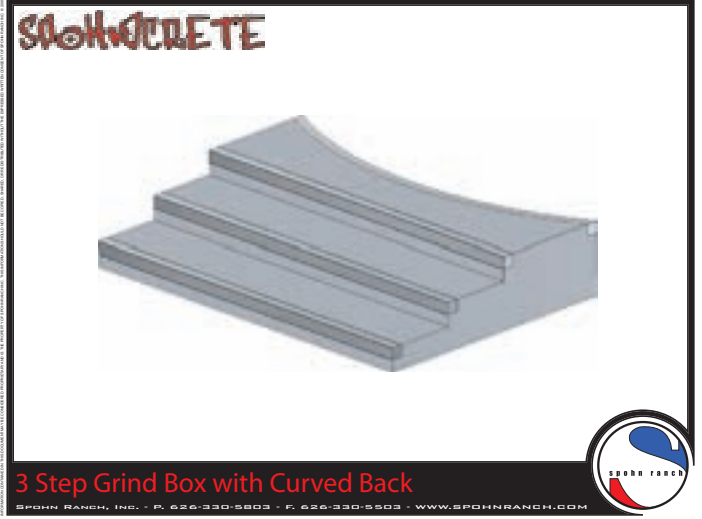
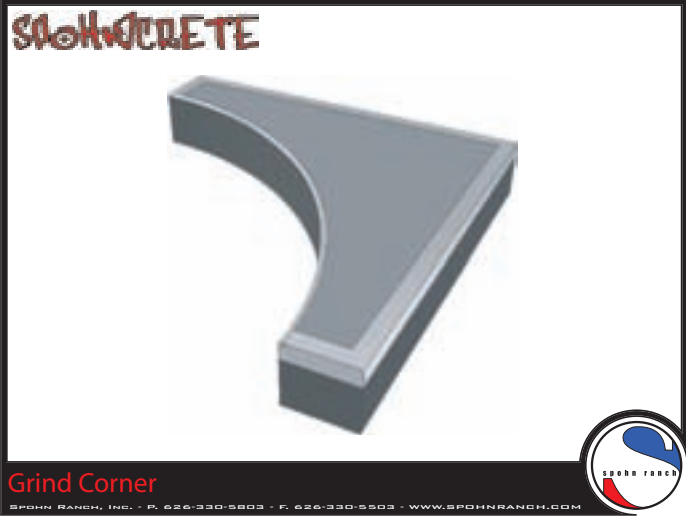
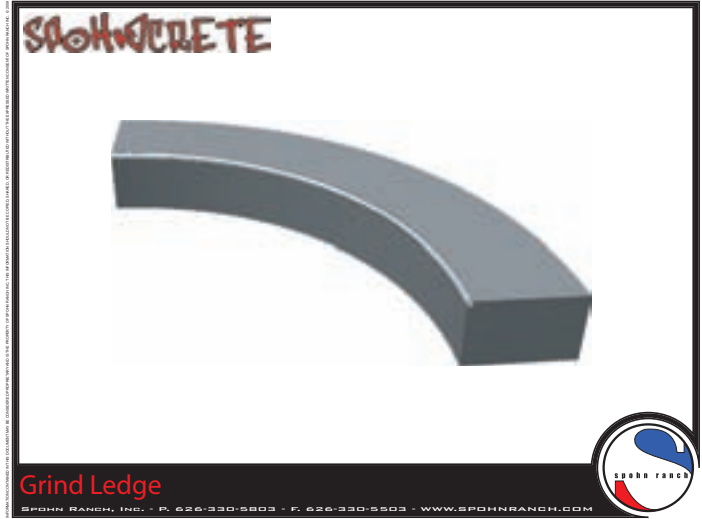
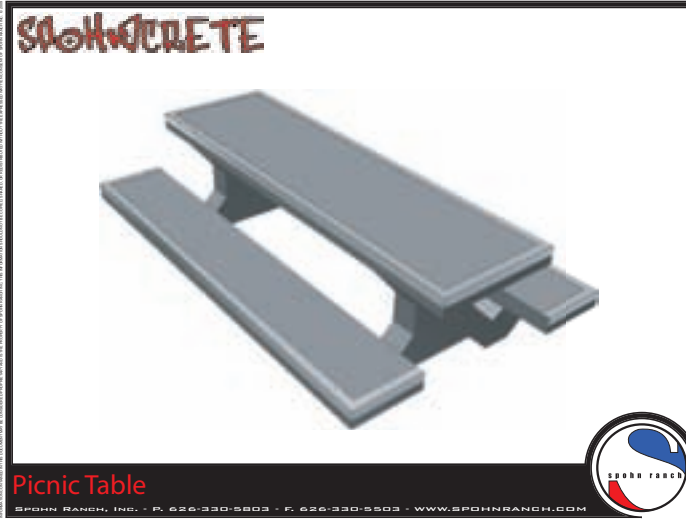
Available sizes starting on Page 14

CONCRETE DIY SKATE ELEMENTS



Available sizes starting on Page 14

CONCRETE DIY SKATE ELEMENTS



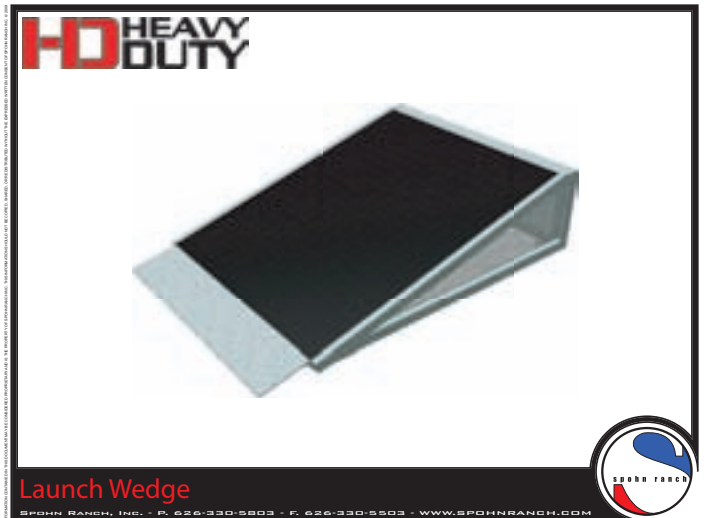
Available sizes starting on Page 14

HD & TRUERIDE DIY SKATE ELEMENTS (ALL RAMPS ARE AVAILABLE IN TRUERIDE)



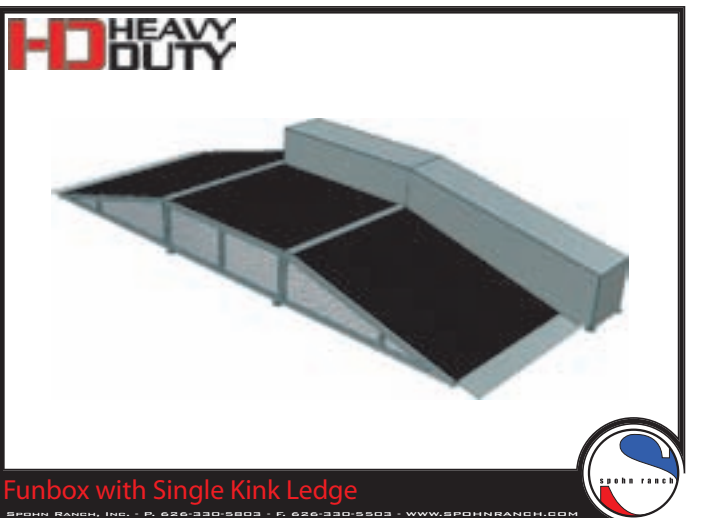
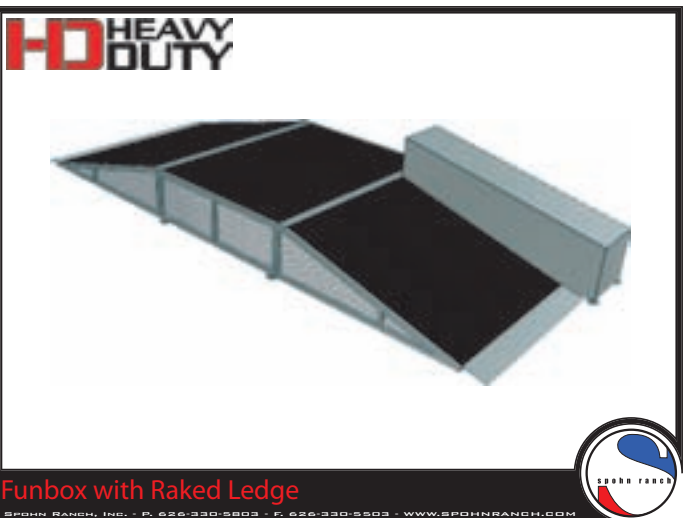
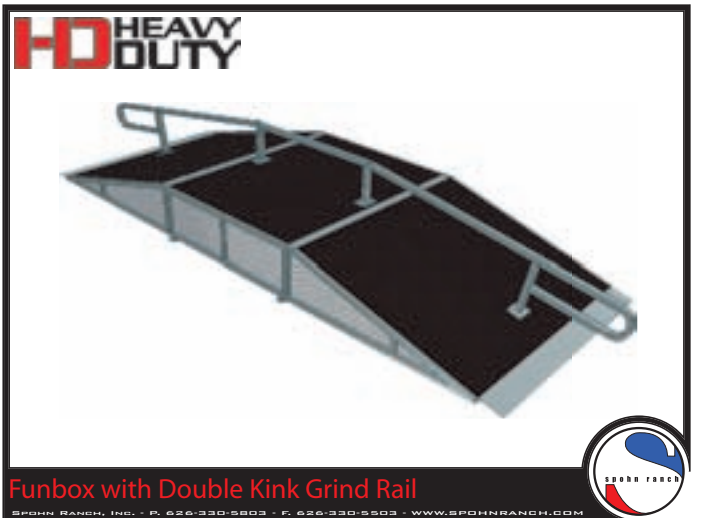
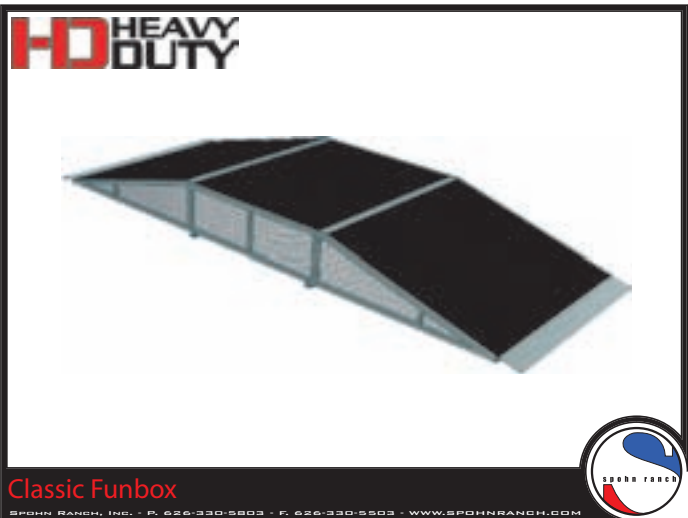
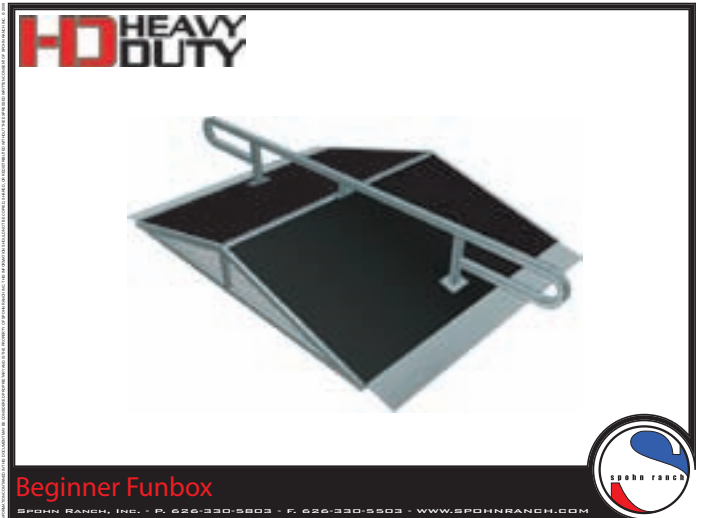
Available sizes starting on Page 14

HD & TRUERIDE DIY SKATE ELEMENTS (ALL RAMPS ARE AVAILABLE IN TRUERIDE)



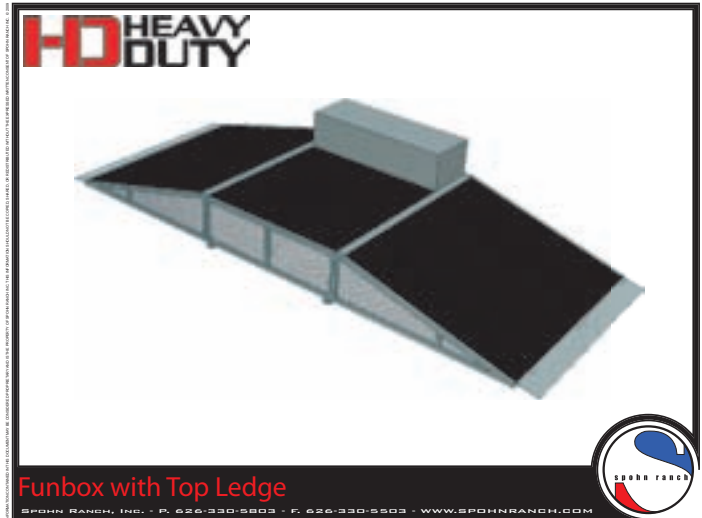
Available sizes starting on Page 14

HD & TRUERIDE DIY SKATE ELEMENTS (ALL RAMPS ARE AVAILABLE IN TRUERIDE)



Available sizes starting on Page 14

HD & TRUERIDE DIY SKATE ELEMENTS (ALL RAMPS ARE AVAILABLE IN TRUERIDE)



Available sizes starting on Page 14

Concrete DIY Elements

ITEM #	DESCRIPTION	HEIGHT	WIDTH
26A	8' Long Concrete Grind Box / Manual Pad	12"	5'
26B	8' Long Concrete Grind Box / Manual Pad	18"	5'
28A	8' Long Raked Concrete Grind Box	12"-20"	5'
28A	Low 8' Long Concrete Grind Box with Curved Back	12"	5'
28B	High 8' Long Concrete Grind Box with Curved Back	18"	5'
24C	21" Tall x 7' Long Concave Bench	21"	22"
24B	16" T x 20" W x 8' L Granite-Top Park Bench	16"	20"
24A	16" Tall x 20" Wide x 8' Long Concrete Park Bench	16"	20"
32A	Low Two-Step 8' Long Concrete Box	10"-18"	5'
32B	High Two-Step 8' Long Concrete Box	12"-24"	5'
33A	Low Two-Step 8' Long Concrete Box with Curved Back	10"-18"	5'
33B	High Two-Step 8' Long Concrete Box with Curved Back	12"-24"	5'
36A	Low 8' x 8' x 8' Triangle 3-Step Grind Box	6-12-18"	8'
36B	High 8' x 8' x 8' Triangle 3-Step Grind Box	12-18-24"	8'
29A	8' Long Concrete Grind Curb	6"	8"
30A	8' Long Concrete Grind Curb with Steel Edge	6"	8"
31A	32" Tall x 8' Long Concrete Barrier	32"	2'
23A	Concrete Trash Can	32"	28"
25A	7'6" Long Concrete Picnic Table	14-32"	7'
38A	Low 14.5' Long Curved Concrete Grind Ledge	12"	2'
38B	Mid 14.5' Long Curved Concrete Grind Ledge	15"	2'
38C	High 14.5' Long Curved Concrete Grind Ledge	18"	2'
37A	Low 8' Long Curved Concrete Grind Corner	12"	8'
37B	Mid 8' Long Curved Concrete Grind Corner	15"	8'
37C	High 8' Long Curved Concrete Grind Corner	18"	8'
35A	8' Long Concrete 3-Step Box with Curved Back	6-12-18"	5'
34B	8' Long Concrete Podium 3-Step Box	6-12"	5'
34A	8' Long Concrete 3-Step Box	6-12-18"	5'

Steel Grind Rails

ITEM #	DESCRIPTION	HEIGHT	WIDTH
16A	12' Long Grind Rail	8"	12'
16B	12' Long Grind Rail	14"	12'
18A	12' Long Raked Grind Rail	8"-10"	12'
18B	12' Long Raked Grind Rail	12"-14"	12'
17A	16' Long Double-Kinked Grind Rail	8"-12"	16'
17B	16' Long Double-Kinked Grind Rail	10"-14"	16'
19A	Taco Curved Grind Rail	12"	12'
19B	Taco Curved Grind Rail	24"	14'
21A	12" Tall x 8' Long Steel Grind Bench	12"	8'
21B	18" Tall x 8' Long Steel Grind Bench	18"	8'
22A	Pole Jam	3'	2'

Quarter Pipes, Banks & Spines

ITEM #	DESCRIPTION	HEIGHT	WIDTH
2A	Quarter Pipe -- 4' Deep Deck	3'	8'
2B	Quarter Pipe -- 8' Deep Deck	3'	8'
2C	Quarter Pipe -- 4' Deep Deck, Guardrails	4'	8'
2D	Quarter Pipe -- 8' Deep Deck, Guardrails	4'	8'
2E	Quarter Pipe -- 4' Deep Deck, Guardrails	5'	8'
2F	Quarter Pipe -- 8' Deep Deck, Guardrails	5'	8'
1A	Bank -- 4' Deep Deck	3'	8'
1B	Bank -- 8' Deep Deck	3'	8'
1C	Bank -- 4' Deep Deck, Guardrails	4'	8'
1D	Bank -- 8' Deep Deck, Guardrails	4'	8'
1E	Bank -- 4' Deep Deck, Guardrails	5'	8'
1F	Bank -- 8' Deep Deck, Guardrails	5'	8'
4A	Spine -- 2' Tall x 4' Wide	2'	4'
4B	Spine -- 2' Tall x 8' Wide	2'	8'
4C	Spine -- 3' Tall x 4' Wide	3'	4'
4D	Spine -- 3' Tall x 8' Wide	3'	8'
4E	Spine -- 4' Tall x 8' Wide	4'	8'

Assorted Ramps & Fun Boxes

ITEM #	DESCRIPTION	HEIGHT	WIDTH
5A	18" Tall x 4' Wide Launch Wedge	18"	4'
5B	18" Tall x 8' Wide Launch Wedge	18"	8'
5C	24" Tall x 4' Wide Launch Wedge	24"	4'
5D	24" Tall x 8' Wide Launch Wedge	24"	8'
15A	2' Tall x 8' Wide Jump Box (4' Deck)	2'	8'
15B	3' Tall x 8' Wide Jump Box (6' Deck)	3'	8'
15C	4' Tall x 8' Wide Jump Box (8' Deck)	4'	8'
14A	2' Tall Hump	2'	4'
14B	2' Tall Hump	2'	8'
3A	Roll-In -- 4' Deep Deck, Guardrails	4'	8'
3B	Roll-In -- 8' Deep Deck, Guardrails	4'	8'
3C	Roll-In -- 4' Deep Deck, Guardrails	5'	8'
3D	Roll-In -- 8' Deep Deck, Guardrails	5'	8'
13A	Beginner's Fun Box	2'	8'
6A	Fun Box (6' Deck)	2'	8'
6B	Fun Box (8' Deck)	2'	8'
12A	Fun Box w/Double Kink Grind Rail (6' Deck)	2'	8'
12B	Fun Box w/Double Kink Grind Rail (8' Deck)	2'	8'
7A	Fun Box w/Raked Ledge (6' Deck)	2'	8'
7B	Fun Box w/Raked Ledge (8' Deck)	2'	8'
8A	Fun Box w/Single Kink Ledge (6' Deck)	2'	8'
8B	Fun Box w/Single Kink Ledge (8' Deck)	2'	8'
11A	Fun Box w/Single Kink Grind Rail (6' Deck)	2'	8'
11B	Fun Box w/Single Kink Grind Rail (8' Deck)	2'	8'
9A	Fun Box w/Top Ledge (6' Deck)	2'	8'
9B	Fun Box w/Top Ledge (8' Deck)	2'	8'
10A	Fun Box w/Top Rail (6' Deck)	2'	8'
10B	Fun Box w/Top Rail (8' Deck)	2'	8'



TO ORDER YOUR DIY SKATEPARK OR ASK QUESTIONS

contact Spohn Ranch at 877-489-3539 or email us at diy@spohnranch.com

WWW.SPOHNRANCH.COM