

Diesel Remanufactured Component Identification

Purpose:

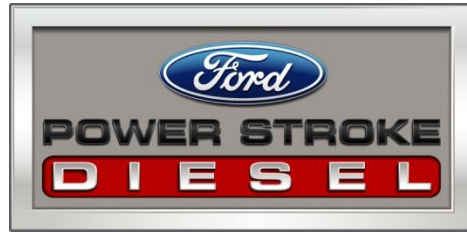
Many diesel service parts are now only available as remanufactured parts. However, during warranty parts reviews, some components from Service Part Warranty (SPW) claims for these remanufactured parts are found to be original equipment components (not remanufactured). It is the dealer's responsibility to verify the part meets Service Part Warranty (SPW) time/mileage criteria and matches the part from the customer paid repair or invoice. If the original repair order or invoice shows a part with a suffix ending in "RM", the part returned from the service part warranty claim must be identifiable as remanufactured.

For example, a remanufactured injector previously replaced in cylinder #6 must be the part being considered for SPW coverage and not one of the other original seven injectors. Parts personnel, likewise, must review over-the-counter parts being considered for SPW to ensure they are remanufactured.

The following pictures illustrate how to determine whether or not diesel parts are remanufactured. Dealer parts and service personnel should use this aid to ensure parts considered for SPW coverage are indeed remanufactured and not from the original engine. **Incorrect returned parts are subject to claim chargeback.**

Table of Contents

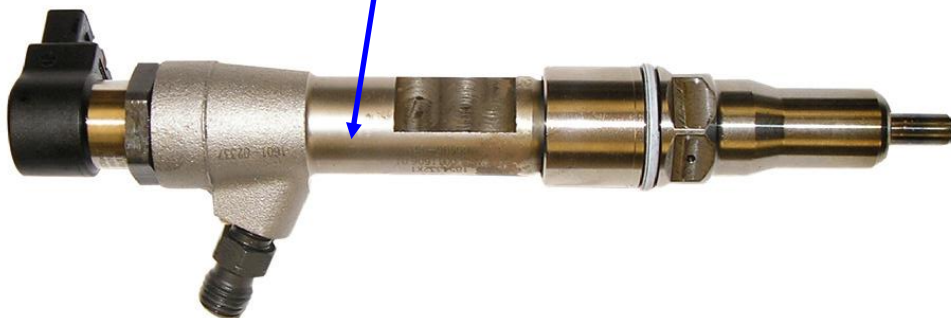
6.4L Power Stroke Diesel Fuel Injectors	2
6.0L Power Stroke Diesel Fuel Injectors	3
7.3L Power Stroke Diesel Fuel Injectors	4
6.4L Power Stroke Diesel Turbochargers.....	5
6.0L Power Stroke Diesel Turbochargers and CHRAs.....	6
6.4L Power Stroke Diesel High Pressure Fuel Pumps.....	7
6.0L & 4.5L Power Stroke Diesel High Pressure Oil Pumps (05-10MY).....	8
6.0L Power Stroke Diesel High Pressure Oil Pumps (03-04MY).....	9
7.3L Power Stroke Diesel High Pressure Oil Pumps	10
6.0L & 6.4L Power Stroke Diesel Cylinder Heads	11
6.0L Power Stroke Diesel Fuel Injection Control Modules (FICMs)	12

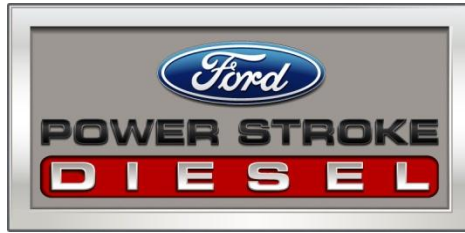


6.4L Power Stroke Diesel Fuel Injectors

Part Number
8C3Z-9E527-DRM

Remanufactured 6.4L Power Stroke Diesel Fuel Injectors will have "REMAN" laser etched into the injector body.





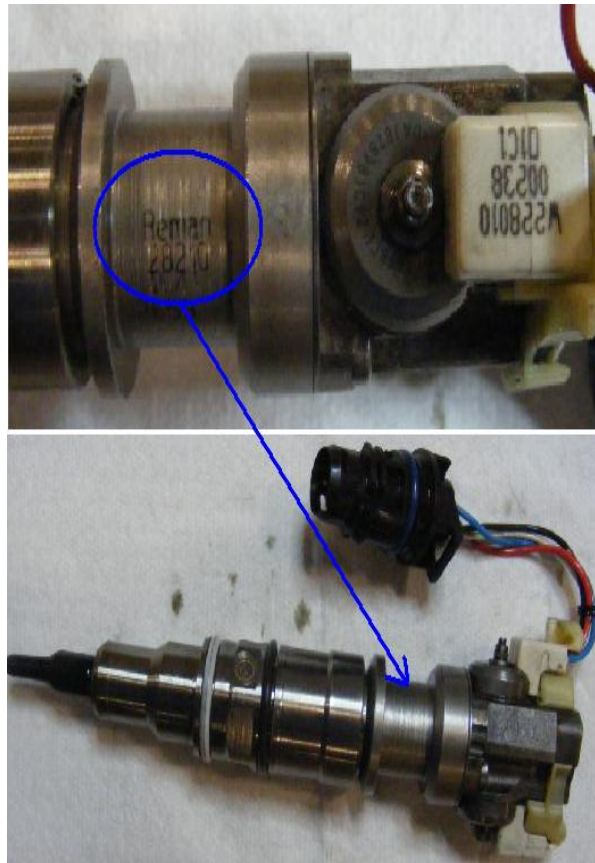
6.0L Power Stroke Diesel Fuel Injectors

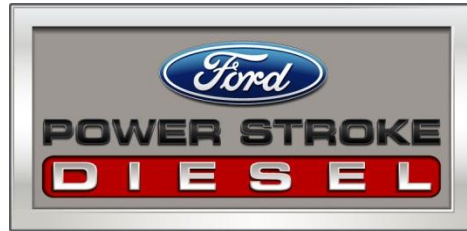
Part Numbers

4C3Z-9E527-BRM

3C3Z-9E527-ECRM

Remanufactured 6.0L Power Stroke Diesel Fuel Injectors will have "Rmn04" or "Reman" followed by a serial number laser etched into the intensifier body.





7.3L Power Stroke Diesel Fuel Injectors

Part Numbers

5C3Z-9VE527-BRM

F61Z-9VE527-BRM

5C3Z-9VE527-ARM

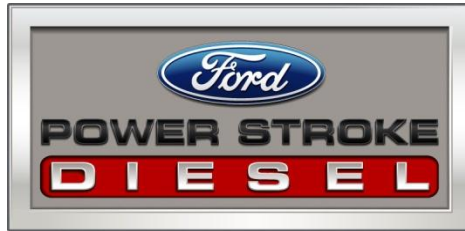
F61Z-9VE527-ERM

F4TZ-9VE527-AARM



The top of the injector solenoid is marked "R" with "REMAN" underneath.

Note There are no serviceable components inside of the injector; the injector solenoid should not be disassembled.



6.4L Power Stroke Diesel Turbochargers

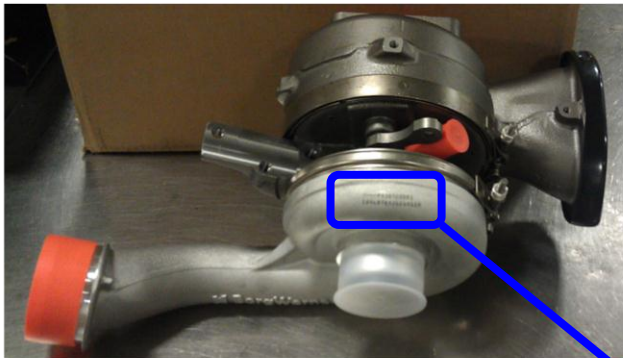
Part Numbers

8C3Z-6K682-AARM (LP)

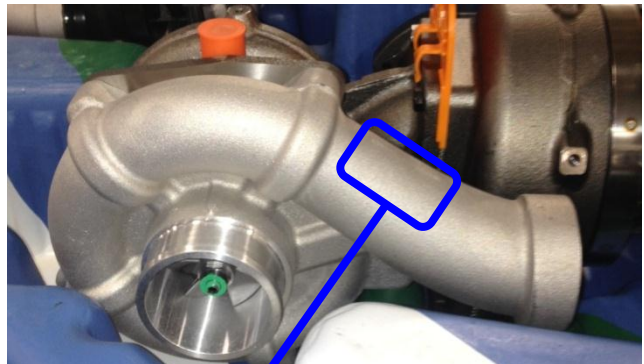
8C3Z-6K682-BARM (HP)

Remanufactured 6.4L Power Stroke Diesel High Pressure and Low Pressure Turbochargers will have "P4" imprinted on the top line of the compressor cover.

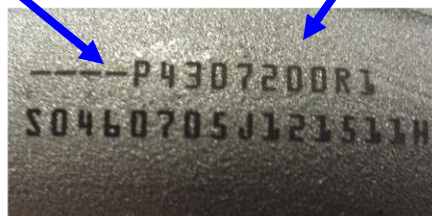
High Pressure

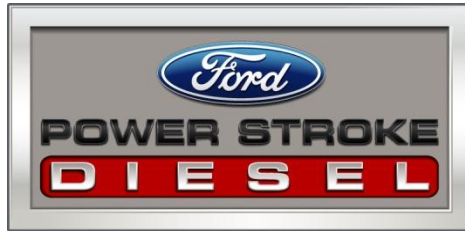


Low Pressure



"P" field in top line of marking is the BorgWarner part number.
A "4" after the P designates a Reman assembly
A "1" after the P designates a New assembly
The field beginning with an "S" is BorgWarner's serialization of the turbo





6.0L Power Stroke Diesel Turbochargers and CHRAs

Part Numbers

Turbochargers

3C3Z-6K682-CCRM
4C3Z-6K682-CDRM
5C3Z-6K682-CCRM
4C4Z-6K682-ARM
5C4Z-6K682-BRM

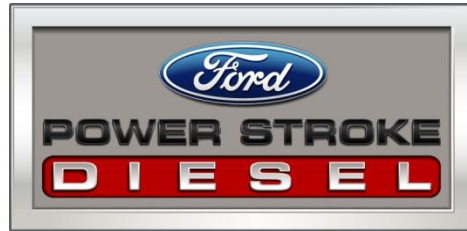
CHRAs

3C3Z-9G489-ABRM
3C3Z-9G489-BBRM
4C3Z-9G489-ACRM
5C3Z-9G489-ACRM



Both 6.0L Power Stroke Diesel Turbochargers and CHRA assemblies have a remanufactured tag located on the back of the compressor housing. The tag contains the word “REMANUFACTURED” as well as the supplier part number and remanufactured serial number.



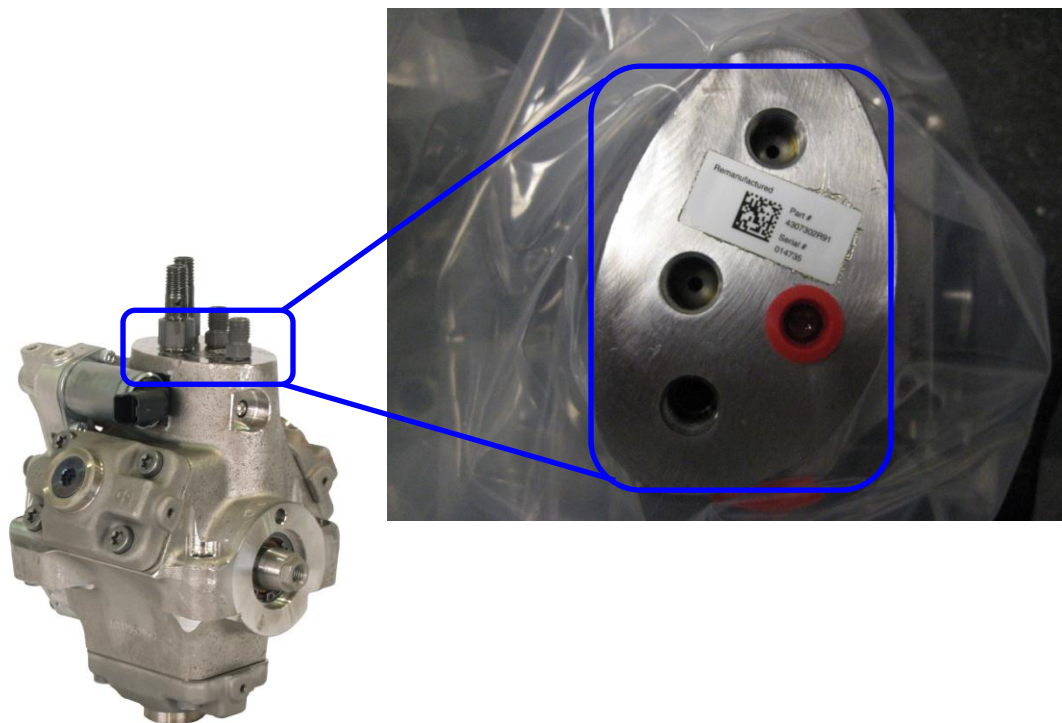


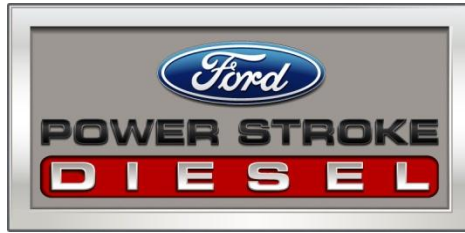
6.4L Power Stroke Diesel High Pressure Fuel Pumps

Part Number

8C3Z-9A543-DRM

Remanufactured 6.4L Power Stroke Diesel High Pressure Fuel Pumps can be identified by a white label affixed to the top surface containing the word "Remanufactured".





6.0L & 4.5L Power Stroke Diesel High Pressure Oil Pumps (05-10MY)

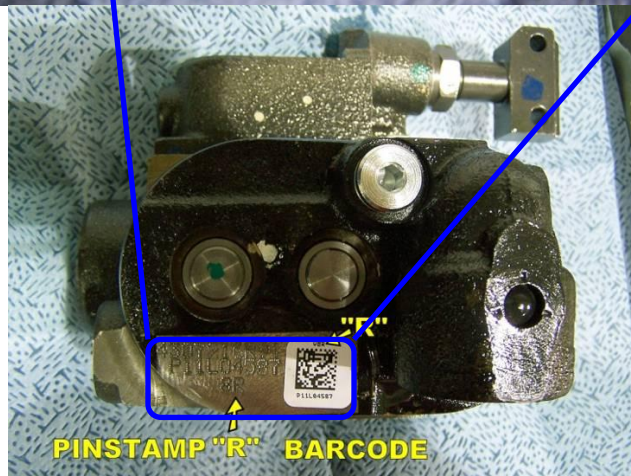
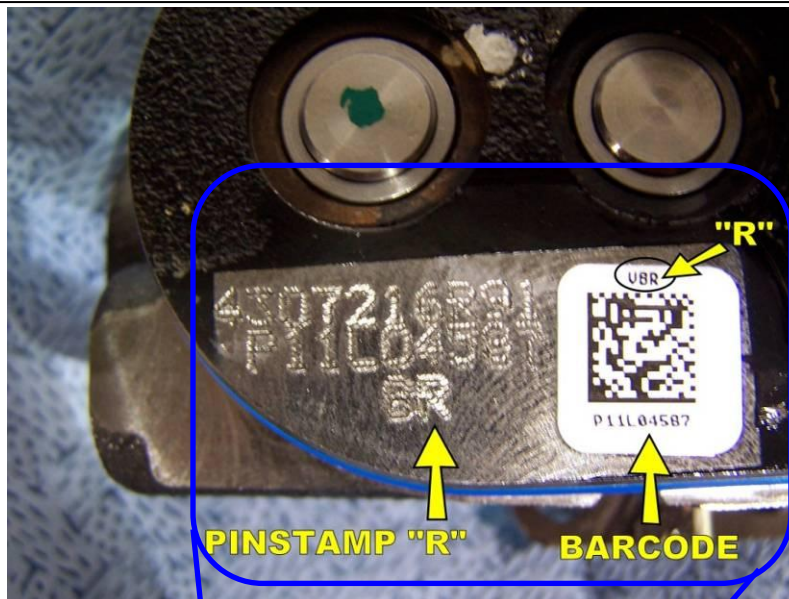
Part Numbers

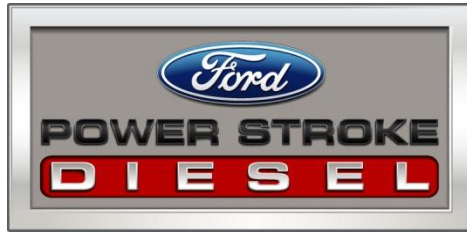
6E7Z-9A543-BRM
8E7Z-9A543-CRM

5C3Z-9A543-ARM
5C4Z-9A543-ERM

Remanufactured 4.5L & 6.0L Sheppard Power Stroke Diesel High Pressure Oil Pumps will have several features to identify them as remanufactured:

1. White Bar Code Label
 - a. Either "V8R" or "V6R"
2. Pinstamp "R"
 - a. Either "8R" or "6R"





6.0L Power Stroke Diesel High Pressure Oil Pumps (03-04MY)

Part Numbers

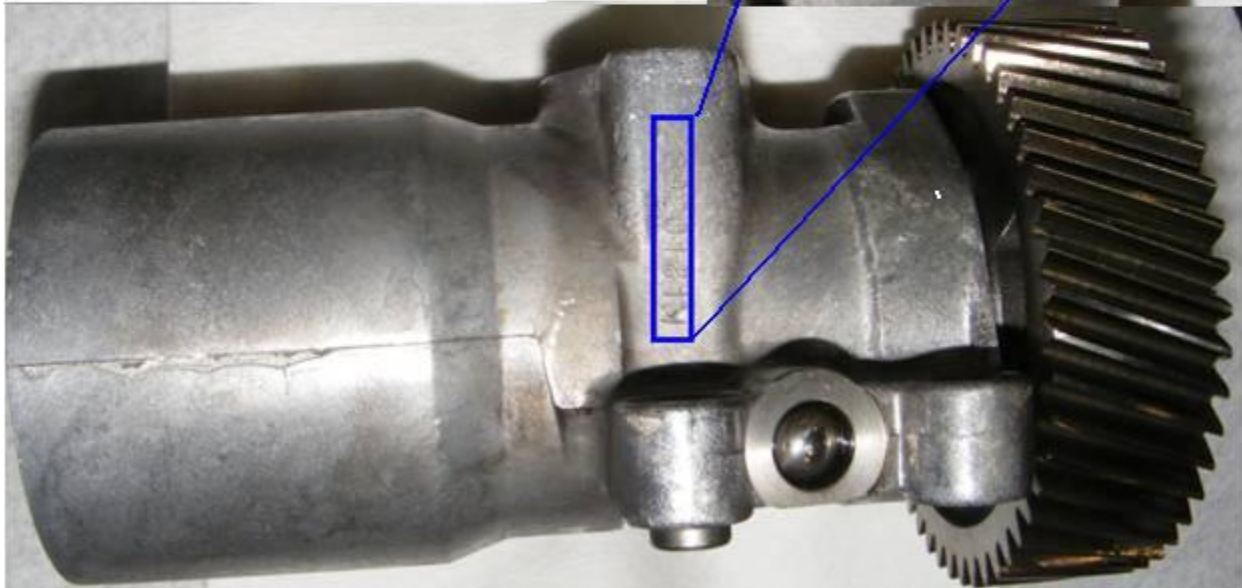
3C3Z-9A543-AARM

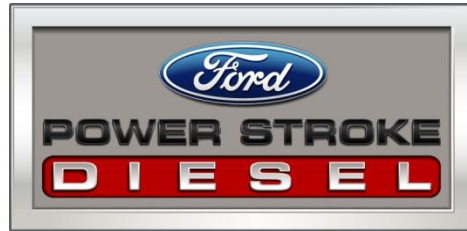
4C3Z-9A543-AARM

The remanufactured serial number is etched on the housing of the pump body.

“REMANUFACTURED” may be stamped on rear cover plate.

“OS” may be stamped on the rear cover plate to indicate an over sized rear cover.





7.3L Power Stroke Diesel High Pressure Oil Pump

Part Numbers

F81Z-9A543-CRM

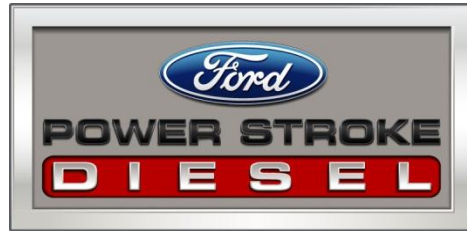
F6TZ-9VA543-ARM

5C3Z-9VA543-BRM

F4TZ-9VA543-AARM

Remanufactured ID tag is visible on the pump body and contains the work "REMANUFACTURED".





6.0L & 6.4L Power Stroke Diesel Cylinder Heads

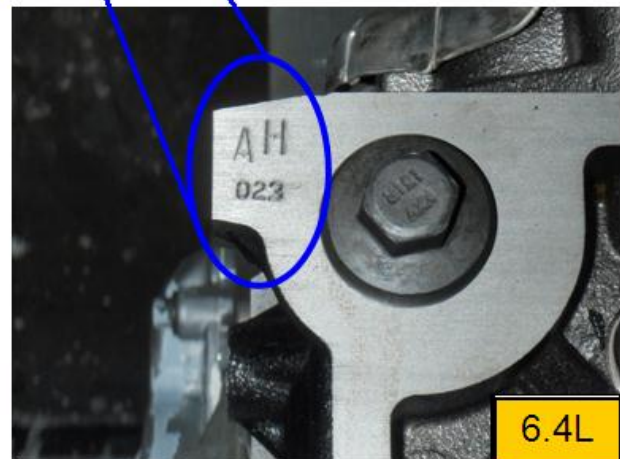
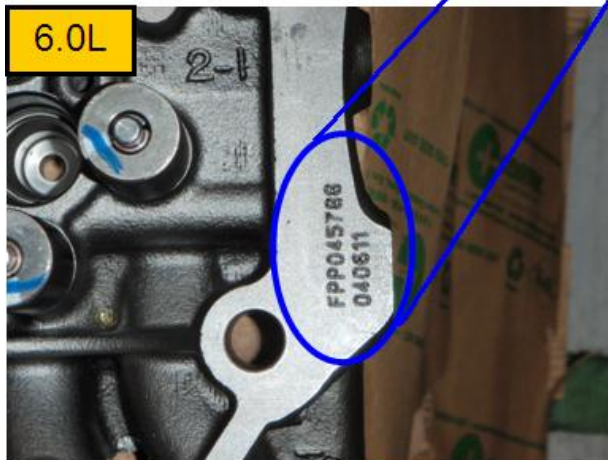
Part Numbers

6.0L
3C3Z-6049-ARM
6C3Z-6049-DRM

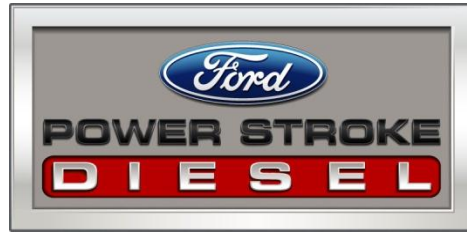
6.4L
8C3Z-6049-BRM



6.0L & 6.4L – Cylinder heads are stamped with a batch number at the rear of the casting.



*** Note:** These markings will be present on remanufactured cylinder heads that come on remanufactured engines as well as used for service parts.



6.0L Power Stroke Diesel Fuel Injection Control Modules (FICMs)

Part Numbers

Complete Programmed / Unprogrammed

4C3Z-12B599-ABRM
4C3Z-12B599-CRM
4C3Z-12B599-DRM
4C3Z-12B599-ERM

Half-Shell

4C3Z-12B599-BARM

All complete FICMs (programmed and unprogrammed) contain a unit label on the front side of the case containing the word "REMANUFACTURED" along with the component number "4307###R#".

All FICM Half-Shells contain a unit label on the back side of the case with the component number "1887###C#".

