

# Digital Grid Products At a Glance

Protection, Substation Automation, Power Quality

# Digital Grid Products

## Broadest portfolio – strong brands

Substation Automation,  
RTU's

Power Quality  
Feeder Automation

Protection



**SICAM**

**SICAM, SIPROTEC**

**SIPROTEC, Reyrolle**

# SIPROTEC – Synonym for the world's leading protection technology

More than 1.65 Mill. devices installed therein >500,000 with IEC 61850



First use of electro-magnetic relays



The digital age begins for protection relays



Siemens is honored by Frost & Sullivan for the implementation of IEC 61850



More than one million SIPROTEC-devices in operation



SIPROTEC 5 End-to-End Cyber Security integrated



SIPROTEC 5 goes MindSphere

1910

1977

1980

1998

2006

2008

2010

2011

2012

2015

2017



First digital application in Wuerzburg, Germany



Introduction of the SIPROTEC 4 product group



SIPROTEC Compact – outstanding functionality and compact design



SIPROTEC 5 The new benchmark for protection, automation and monitoring

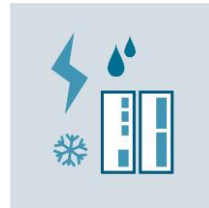


SIPROTEC 5 Process Bus and Digital Substation

# SICAM A8000 Series – Wherever energy flows

## SICAM A8000 Series:

All requirements combined in a single platform



Rough ambient conditions

- 40 ... + 70° C



Automation

PLC - IEC 61131-3



Long product lifecycle

15+ years



Cyber Security

IPSec, crypto-chip etc



Space-saving design

128x124x123mm (W/H/D)



High electric strength

EMC 5kV (IEC 60255-5)



Integrated communication

Protocols, GPRS



Scalability

Modules

# A strong team: Equipped for any task

## CP-8000



Processor with integrated power supply and display

## CP-8021



Processor with external power supply

## CP-8022



Processor + GPRS with external power supply

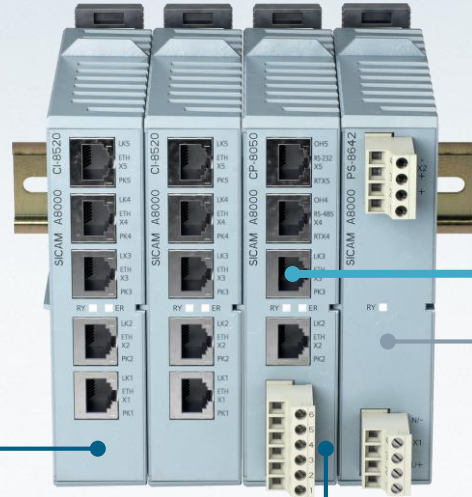
## I/O module



Expansion modules combinable as needed

# The entire family at a glance:

Power supply units, processor modules, and remotely installed expansion module



## SICAM CI-8520 / 21

**CI-8520** Ethernet communication interface

**CI-8521** Ethernet hardware-based application layer firewall

## SICAM CP-8050

- max. 16 I/O lines (max. 8 expansion modules / line)
- max. 14 interfaces (modular)

### PS-8640

DC 24–60 V, 45 W

### PS-8642

DC 110–240 V, AC 230 V, 45 W

- Contact wetting DC 24 V
- Watchdog contact

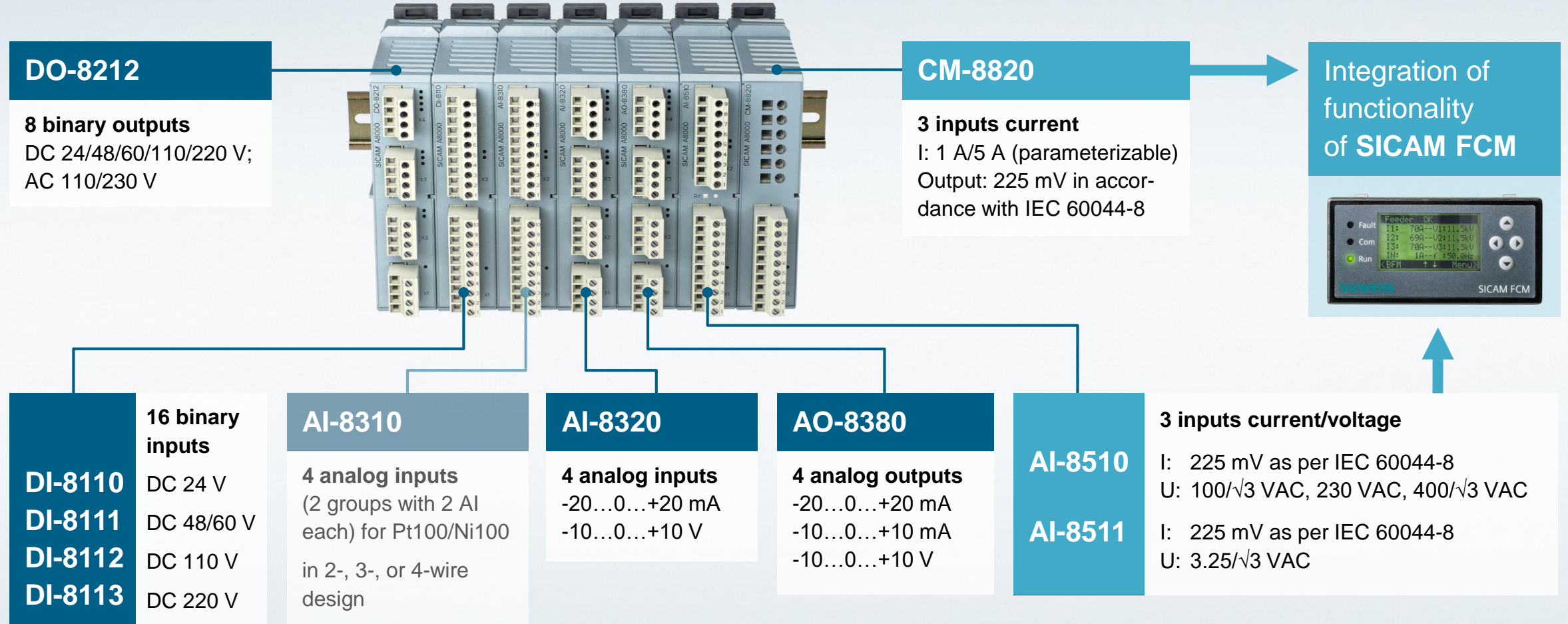


## SICAM CI-8530 / 32

**CI-8530** remote interface module electrical DC 24–60 V

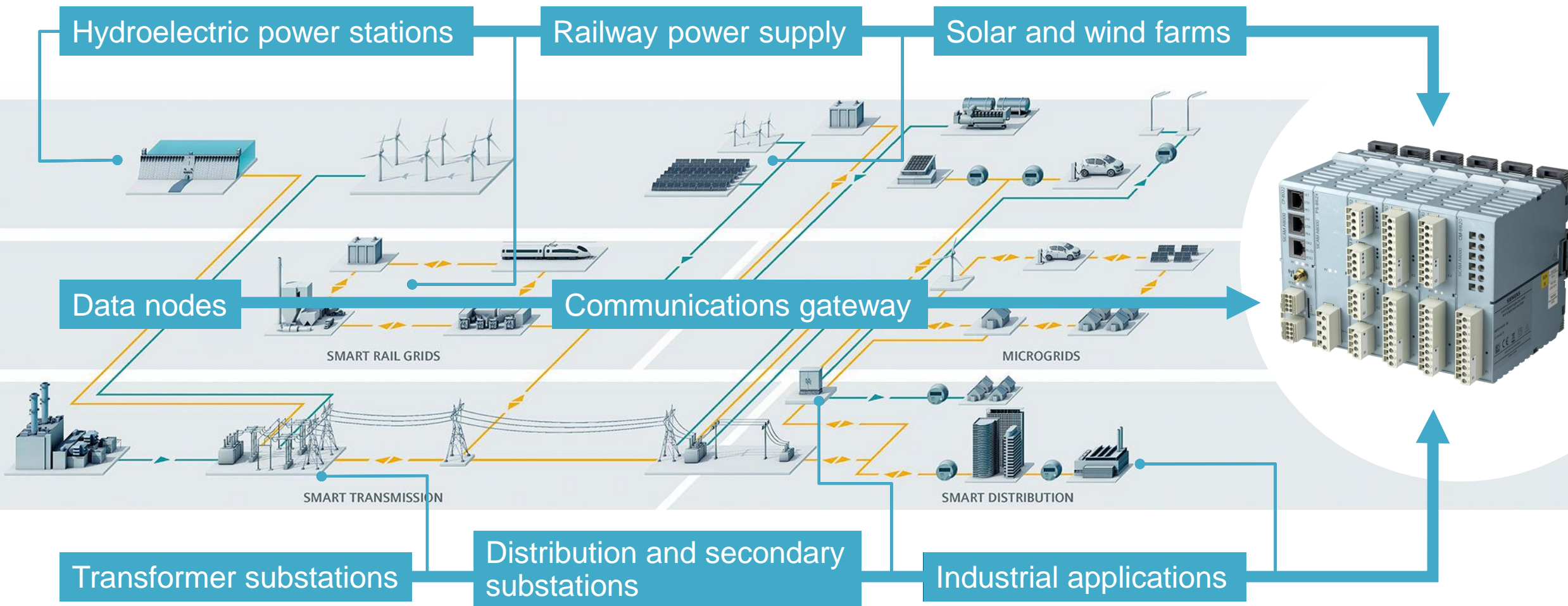
**CI-8532** I/O remote interface module electrical DC 110–220 V

# The entire family at a glance: Expansion modules





# Wherever energy flows: Universal platform allows versatile use

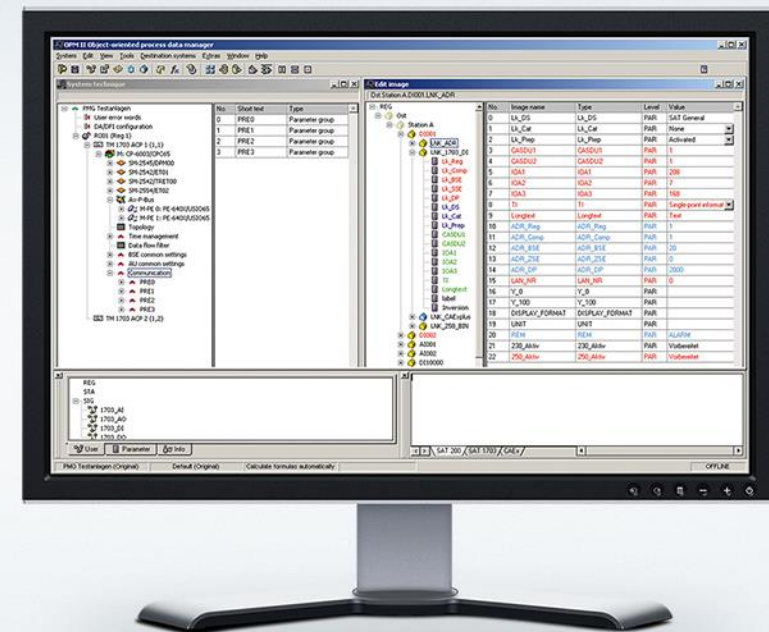


# Convenient engineering: Parameterization, commissioning and operation

## with SICAM WEB



## with SICAM TOOLBOX II



# Cyber Security:

## Meeting the requirements of tomorrow

### Integrated crypto chip

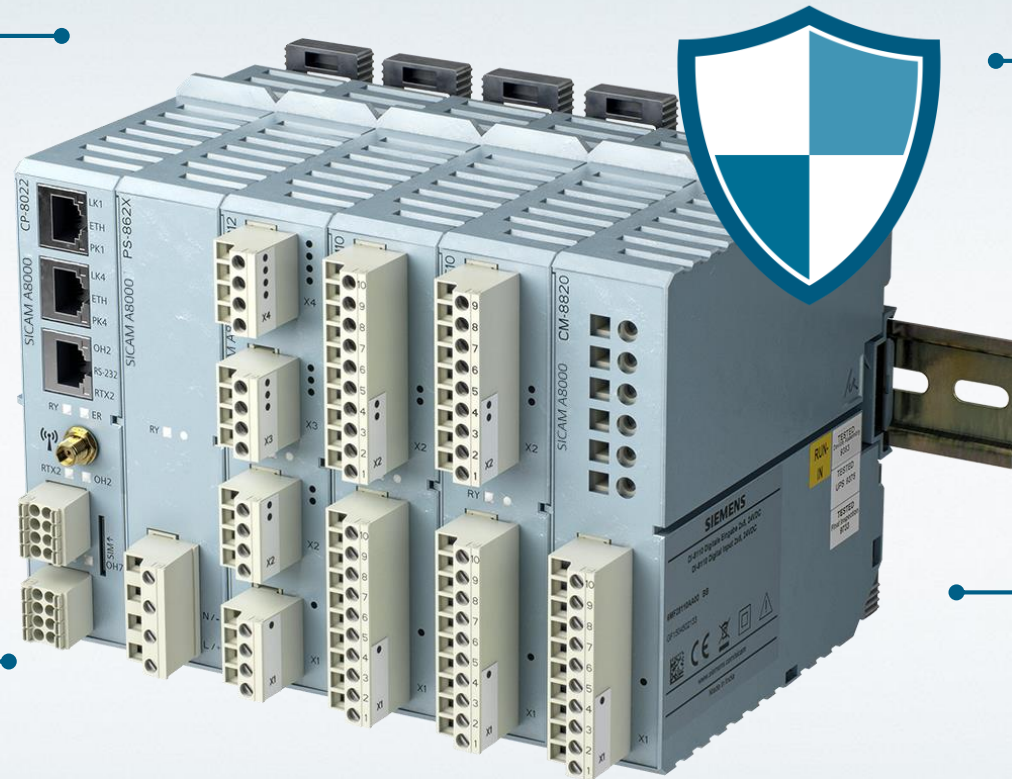
Protects data in a secure environment

### IPSec encryption

Enables secure communication via IP networks

### Secure and reliable https protocol

Guarantees the secure transmission of sensitive data



### Compliant with BDEW White Paper

Fulfills the recommendations for secure and reliable control and communication systems

### Password-protected access to SICAM TOOLBOX II

Ensures that only authorized persons can access your system

# Cyber Security:

## Additional features with SICAM CP-8050

### Firewall

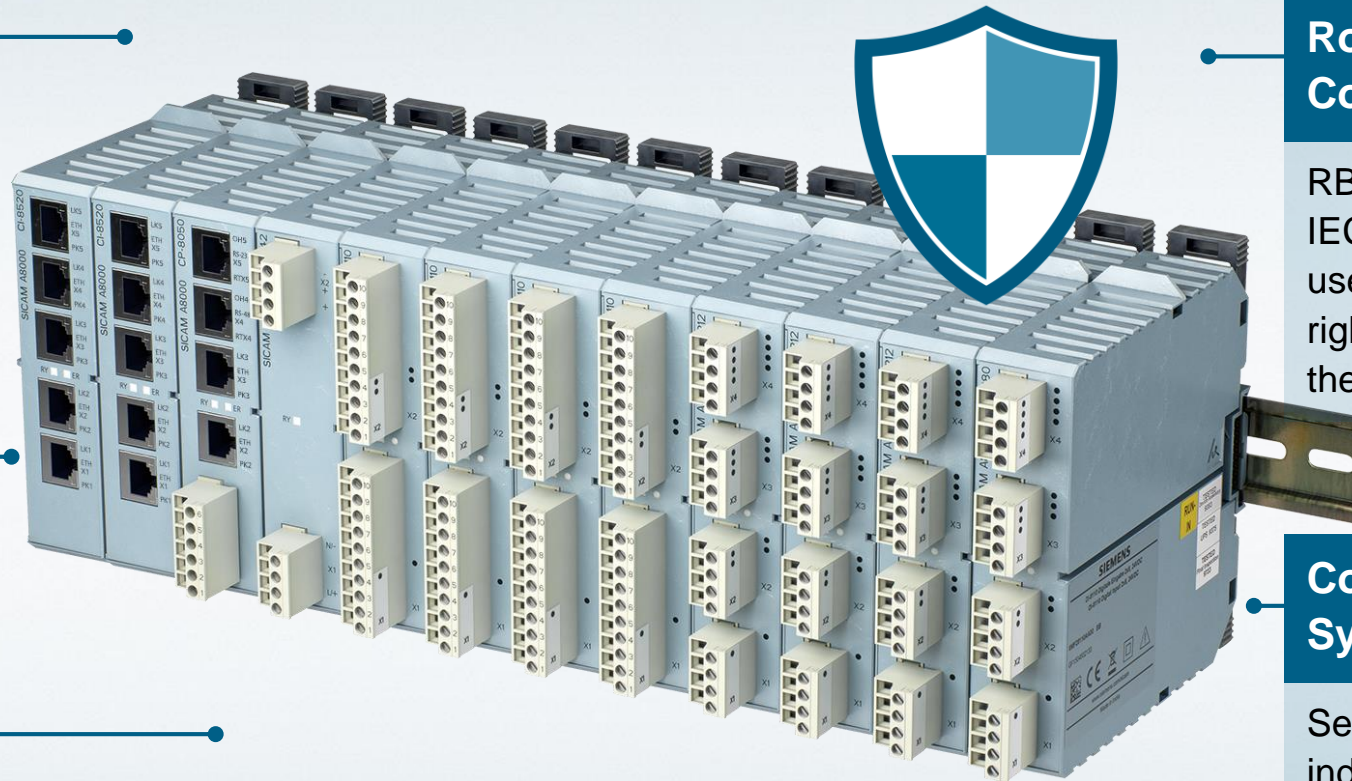
For the separation of TCP/IP networks via integrated software firewall additional hardware-based application firewall

### Firmware Signature

Protection against firmware manipulation

### Security Logbook

Non-volatile storage of SYSLOG events



### Role Based Access Control

RBAC in accordance with IEC 62351-8 ensures that users may exercise only the rights that correspond to their assigned role

### Configurable System Functions

Selective activation of individual or multiple system functions per communications interface

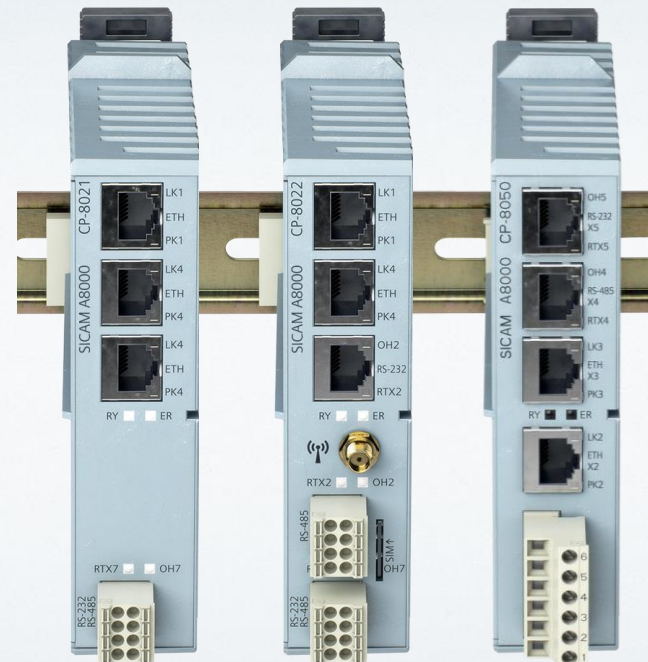
# Flexible communication:

Diverse range of interfaces and protocols

## Multiple communication options:

### CP-8050

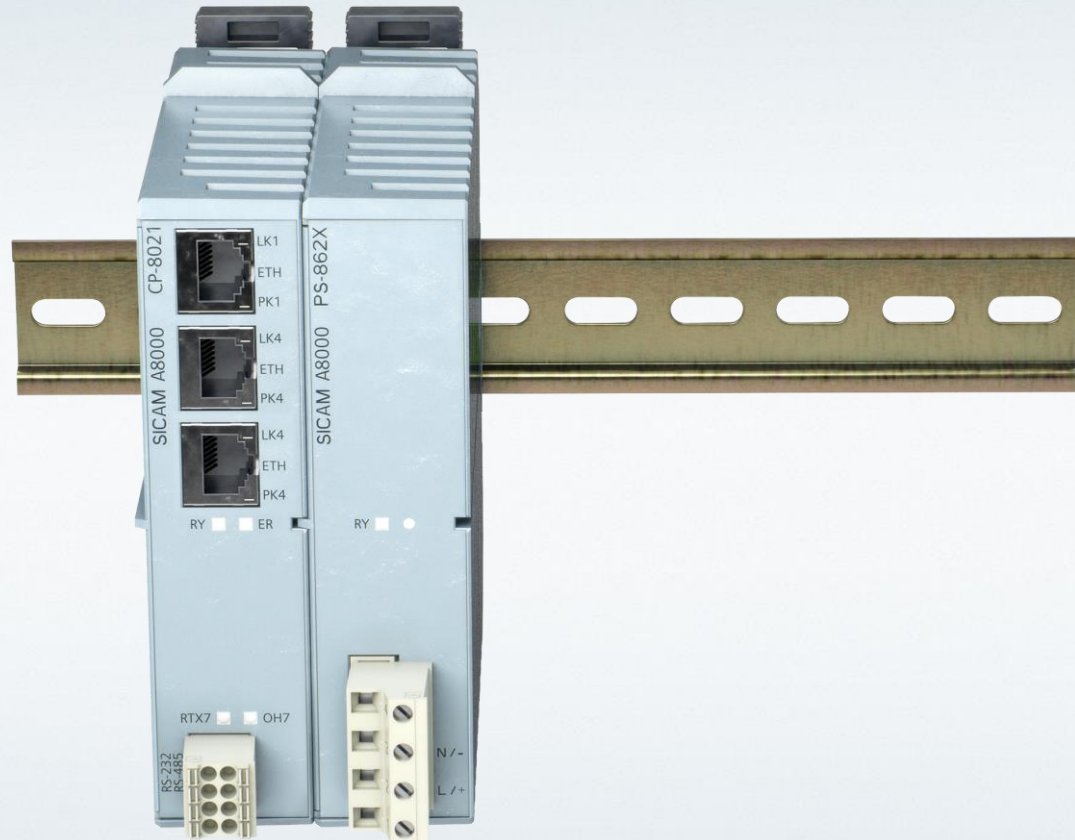
- 2 x RJ45 (Ethernet)
- 1 x RS 232 (RJ45)
- 1 x RS 485
- 10 x RJ45 (Ethernet) optional with CI modules



## Flexible integration into an existing communications infrastructure through the support of standard protocols, legacy systems, and protocols from third-party manufacturers:

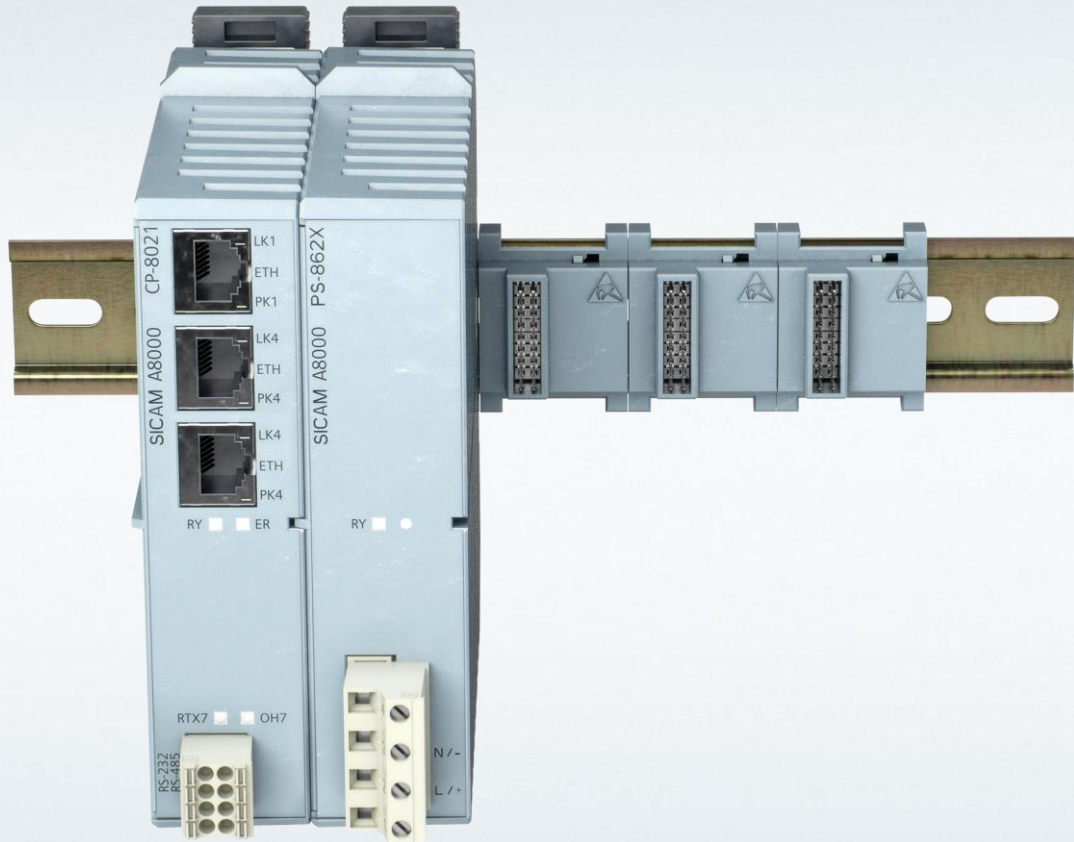
- IEC 61850
- IEC 60870-5-10x
- DNP3.0 serial/TCP
- Modbus RTU/TCP
- Additional protocols upon request

## A strong team: Simple to install



- Compact DIN rail mounting

## A strong team: Simple to install



- Compact DIN rail mounting
- Consistent bus for I/O modules

## A strong team: Simple to install



- Compact DIN rail mounting
- Consistent bus for I/O modules
- Individual combination of modules
- Detection of the plugged modules during startup



## Great benefits right from the factory: Well-designed for practical use

1. Platform modularity for **versatile application options and reduced inventory**
2. Extended temperature range of -40°C to +70°C for **rough ambient conditions**
3. Highest EMC stability up to 5 kV (IEC 60255) for **direct use in substations**
4. Integrated short-circuit indicator functionality for **use in cable network monitoring**
5. Use of international standards such as IEC 61850 for **high investment security**
6. Integrated crypto chip and IPSec encryption to **fulfill the high cyber security requirements**
7. Multitude of interfaces and integrated GPRS module for **simple adaptation to existing communication infrastructures**
8. Integrated web parameterization tool for **simple engineering**
9. Plug-and-Play functionality of the modules for **time and cost savings**