

GARDEN SQ.

RESIDENCES

A woman with long, wavy blonde hair is leaning against the hood of a dark-colored car. She is wearing a dark, long-sleeved blazer over a grey sequined dress. The scene is set in a lush garden at night, with various tropical plants and flowers illuminated by warm, low-key lighting. The car's headlight is visible in the lower left corner.

Discover
a private oasis

There's something special quietly taking hold in Ringwood. It's called Garden Square. It's a place where lush nature lives in timeless harmony with luxurious urban living to create a sanctuary for the mind, body and soul.

From deep within its parkland setting with the creek flowing and the birds singing in the abundant foliage, it's hard to imagine that Garden Square Residences lie in the heart of Ringwood's new retail district. But evidence abounds that Garden Square is for those who cherish the connection between nature and design, between simple pleasures and contemporary urban living.

Crafted with the utmost attention to detail and architecturally inspired by its idyllic surrounds, this vibrant village offers an unbeatable lifestyle. Just a short journey from Melbourne's bustling city centre and moments from the local parklands and tranquility of the Mullum Mullum Creek, Garden Square provides sophisticated living in unparalleled comfort.

A welcome addition to the Ringwood community, Garden Square brings people together and encourages physical wellbeing and mindfulness to flourish. Discover a private oasis.

Garden Sq. Residences



Inspired by the lush vegetation and the creek that meanders alongside, Garden Square's curved, organic facade reflects the changing colours of the creek and its bedrock.



Artist Impression



Life extends beyond four walls at Garden Square. More than just a residence, it's an expansive lifestyle that draws together neighbours and enriches a growing community.





Artist Impression

Oversized, open-plan living areas flow into large balconies, blurring the lines between inside and out and turning everyday occurrences into celebrations that spill out into the landscape.

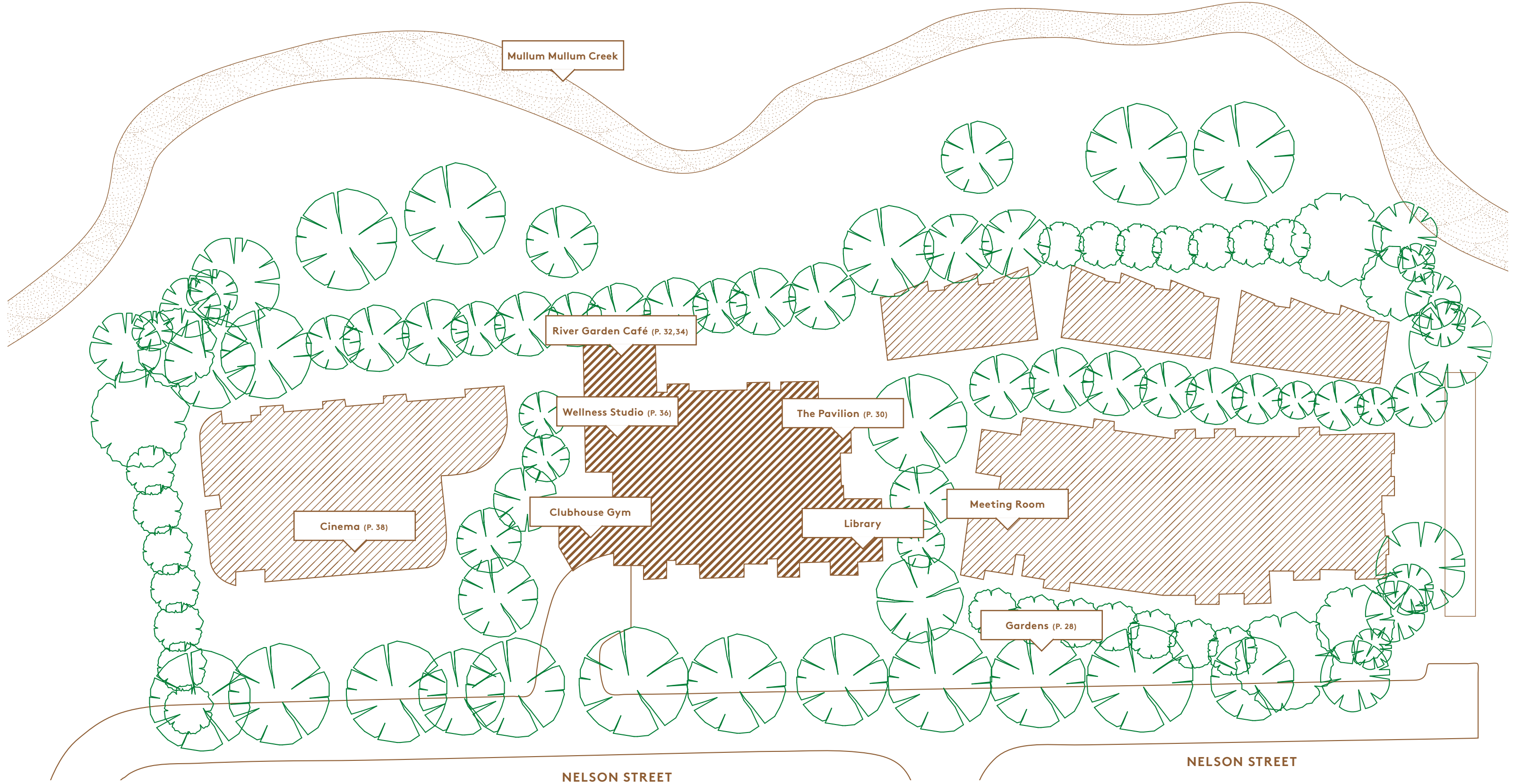




Radiant, luminous interiors reflect the light of the natural surrounds, from where the highest quality fixtures and finishes take their cues.



A Lush Life
with Exclusive
Amenities



Mullum Mullum Creek defines the spirit of Garden Square. Peace and tranquility are in abundance, while the curves of the creek are reflected in the walkways around the apartments and exclusive amenities.

Become part of the Nelson Street community, socialising over leisurely brunches at the exclusive River Garden Café or enjoying some well-deserved 'you' time in the wellness studio. Take things to the next level with a more energetic workout in the clubhouse gym and then unwind with some refreshments and a late night screening in the cinema. It's all at your doorstep, Garden Square inspires you to live your best life.



Gather with neighbours and share a meal or let your private celebrations spill out from your residence to The Pavilion, with the exclusive dining area guaranteed to add extra style to any festivities.



Start the day the best way with a coffee, scrumptious breakfast and a chat with neighbours at River Garden Café.



Mix up mealtimes by swapping the dining table for a regular spot in the River Garden Café, feasting on delectable seasonal produce and unbeatable coffee.

Artist Impression



Combined with a workout in the clubhouse gym or on its own, the wellness studio is available any time to leave you feeling nourished inside and out.

Artist Impression



See all your favourites on the big screen in the cinema, your bonus living room that boasts the best in sound and state-of-the-art digital technology.

A Connected Lifestyle

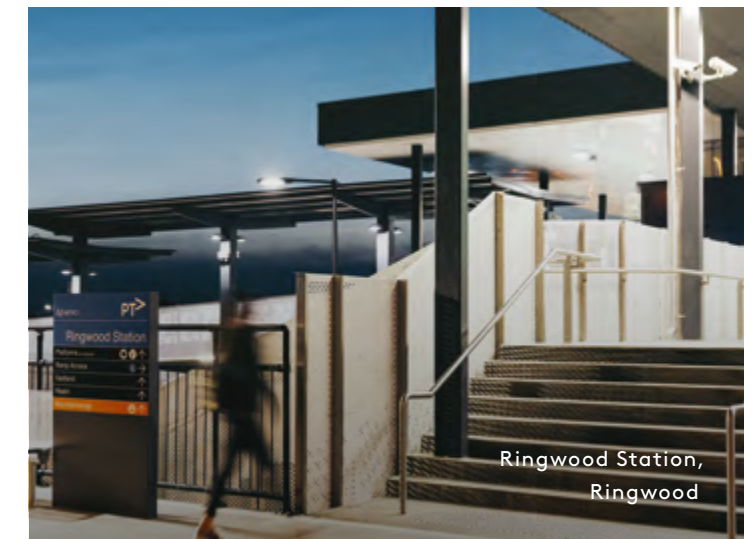
Boutique, vibrant and dynamic, Garden Square encapsulates the Melbourne lifestyle. Just as Garden Square is the ideal blend of urban and nature, the city's labyrinths of laneways, highrises and shopping meccas are interspersed with green gardens, sprawling parklands and waterways.



Flinders Street Station,
Melbourne CBD



GPO,
Melbourne CBD



Ringwood Station,
Ringwood

Connected to the Melbourne city centre by the neighbouring Eastern Freeway or direct to town from the nearby railway station, Garden Square is as much a part of city life as it is its own tranquil sanctuary.

You can be sipping a coffee at River Garden Café one moment and in no time at all you'll be in the cultural, culinary and retail capital of Australia.

Cafés & Bars

1. Cellar Door
2. Nishikan
3. The Firehouse
4. Two Brothers
5. Rubiki
6. Mister Fox
7. Leaf & Vine

Shopping

8. Eastland Shopping Centre
9. Costco
10. Le Tour Cycles
11. Westfield Knox Shopping Centre
12. Eastland Farmers Markets

Transport

13. Ringwood Train Station
14. Eastlink
15. Heatherdale Station
16. Ringwood Bus Interchange

Health & Education

17. Aquanation
18. Antonio Park Primary School
19. Norwood Secondary College
20. Maroondah Hospital
21. Aquinas College
22. Ringwood Secondary College
23. Knox Private Hospital
24. Yarra Valley Grammar
25. Tintern Grammar

Parks & Recreation

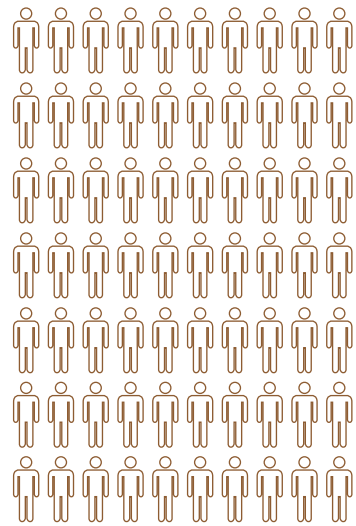
26. Mullum Mullum Creek
27. Ringwood Golf Course
28. Ringwood Lake Park
29. Jubilee Park
30. Koomba Park
31. Dandenong Ranges National Park
32. Yarra Valley



Ringwood's quiet, tree-lined streets reveal local parklands and communal spaces abound, while a bushland bike track and a serene walking path wind between Garden Square and the postcard setting of Mullum Mullum Creek.

An urban village that showcases the best of city living with an outer-urban warmth, Ringwood welcomes locals and newcomers alike.

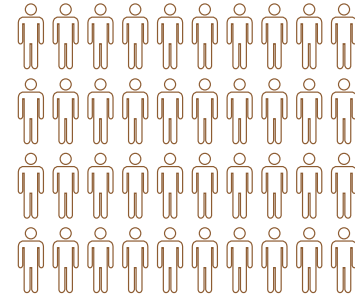
Market demand – Ringwood



1114

Visits per property – Ringwood

Market demand – Victoria average



580

Visits per property – Average of Victoria

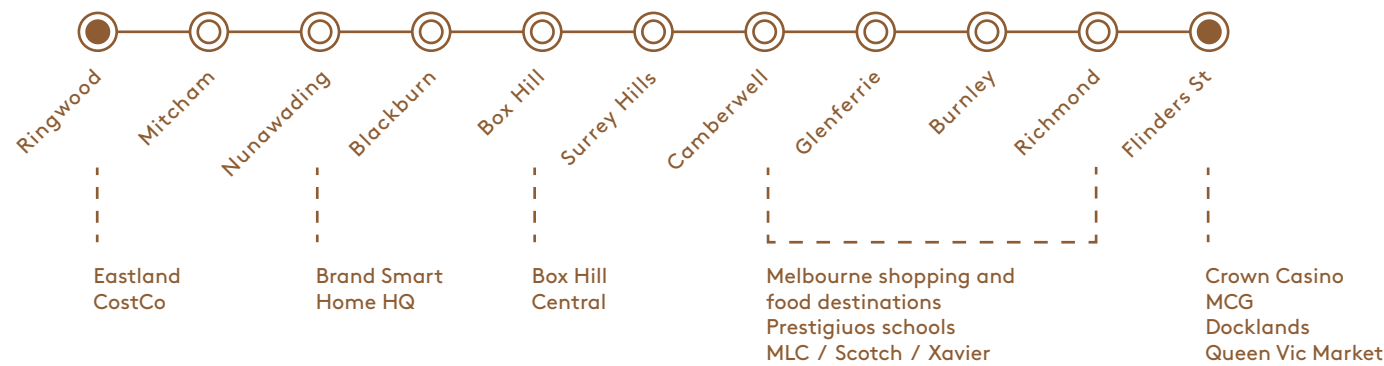
Median Unit Price

49% GROWTH ↑

Median House Price

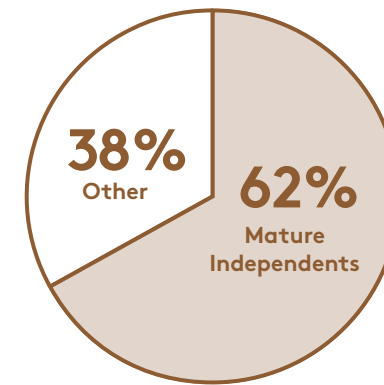
46% GROWTH ↑

Sanctuary to City – 35 minutes by train



Source – Realestate.com.au, Ringwood, Victoria, 3134, Supply and Demand in Ringwood. <http://www.realestate.com.au/neighbourhoods/ringwood-3134-vic>, November 9, 2016

People of Ringwood



Eastland expansion

\$575M

LANDMARK RETAIL EXPANSION OF EASTLAND SHOPPING CENTRE AND NEW TOWN CENTRE PRECINCT



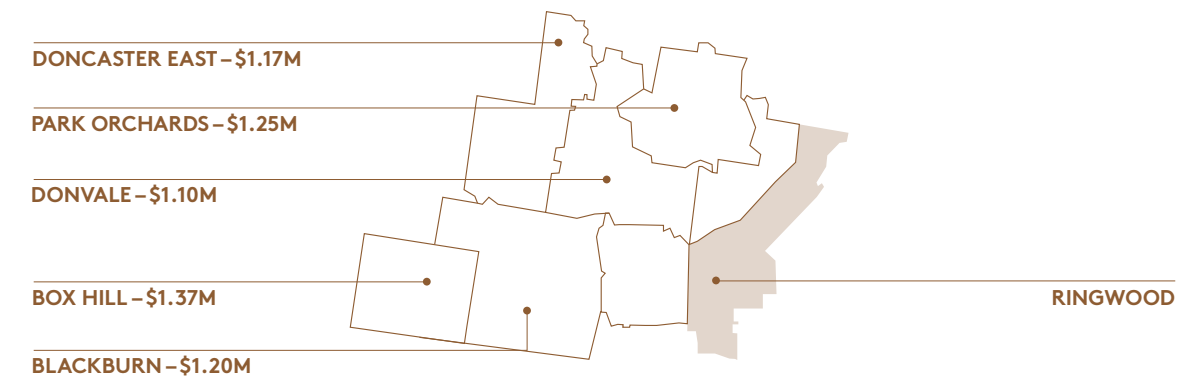
Transport upgrade

\$66M

VICTORIAN GOVERNMENT UPGRADE OF RINGWOOD STATION AND BUS INTERCHANGE



Median house prices of surrounding suburbs



Costco expenditure

\$60M

MULTI-NATIONAL GIANT COSTCO WHOLESALE'S SECOND VICTORIAN STORE IN THE HEART OF RINGWOOD



Council expenditure

\$52M

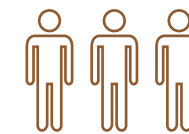
MAROONDAH CITY COUNCIL'S NEW AQUATIC AND LEISURE CENTRE STATE OF THE ART LIBRARY, LEARNING AND CULTURAL CENTRE



Population increase

35%

RINGWOOD WILL GROW BY 35% OVER THE NEXT 20 YEARS



Yarra Valley

30MINS

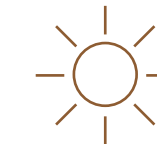
BY CAR VIA MAROONDAH HWY/STATE ROUTE 34



Mornington Peninsula

45MINS

BY CAR VIA EASTLINK/M3 AND MORNINGTON PENINSULA FWY



Melbourne CBD

20MINS

BY CAR VIA EASTLINK AND EASTERN FWY/M3





Rubiki, Ringwood



The Cellar Door Eastland, Ringwood

There's a different experience to be had every day in Ringwood, with a seemingly endless list of cafés, bars, and boutiques.

Weekends are for heading to the vibrant local crop of bars and pubs with friends after getting active in the parks and exploring the local fashion, book and homewares shops.

Weeknights might call for a more intimate catch-up in an atmospheric wine bar, a movie or a meal outside to truly appreciate the surrounds. Ringwood locals are proud to boast of enjoying the best bits of city life at their own pace.



Costco, Ringwood



Scanlan Theodore Eastland, Ringwood

With an architecturally inspiring mix of high-end fashion and boutique style, all eyes are on the newly upgraded Eastland.

A who's who of Australian designers, international brands and exclusive labels have set up shop, while Melbourne's top restauranters have established fine dining outposts and a café culture has bloomed.

Spoiling and enjoying yourself are the goals at Eastland, where frequent exploration will yield exciting new discoveries.



Rioche Eastland, Ringwood



Eastland, Ringwood



Eastland,
Ringwood



Huxtaburger Eastland,
Ringwood

As well as quality retailing and contemporary dining, Eastland's \$575 million upgrade has provided a world-class town square and a generous public space for an integrated mix of activities re-energising Ringwood's urban centre.

With over 450 retailers, including H&M, UNIQLO and Country Road and an exciting spread of fantastic eateries and valet parking, you're spoilt by a premium shopping and dining experience.



Eastland,
Ringwood

The Project Team



Stanley Field

Stanley Field is committed to striving for excellence, ensuring their projects exceed expectations in terms of quality, style, design, time and value.

As one of Australia's leading diversified property developers, Stanley Field is dedicated to promoting a healthy lifestyle by adopting the latest sustainable building practices and design innovation.

Understanding the ever changing needs of residents, their approach is to look beyond the development of apartments to create a nurturing community that promotes healthy social interaction in a premium quality living environment.

stanleyfield.com.au



CHT Architects

CHT Architects are a multidisciplinary architectural firm committed to delivering to the highest of design standards.

A team of creative and passionate professionals, CHT Architects pride themselves on working in close collaboration with clients to produce innovative and functional architectural solutions.

Their aim is to enrich people's lives with premium quality, distinctive buildings that respond to the aspirations of residents while complementing a modern Australian lifestyle.

Highly regarded amongst Melbourne's leading architectural firms, CHT Architects are responsible for some of the city's most iconic residential developments.

The Nelson Street Ringwood design concept centres around creating a connection between residents and the natural beauty of the setting, and activating the surrounding area with a mix of residential, retail and health amenities.

chtarchitects.com.au



GardenSquareRingwood.com.au

Design by Canyon

The information contained in this promotional material is for illustration purposes only and is subject to change. Statements, figures, calculations, plans, images and representations are indicative only. Images may include artists impressions and computer generated images. Changes may be made during the further planning or development stages of any development and dimensions, fittings, finishes, ongoing costs and specifications and representations are subject to change without notice. Whilst all reasonable care has been taken in providing this information the developer and its related companies and their representatives, consultants and agents accept no responsibility for the accuracy of any information contained herein or for any action taken in reliance thereon by any party whether purchaser potential purchaser or otherwise. Prospective purchasers must make their own enquiries to satisfy themselves as to all aspects of any Stanley Field project and further should seek independent legal and financial advice in relation to all of the information contained herein. The information contained in this material is a guide only and does not constitute an offer, inducement, representation, warranty or contract.

