

*Cadillac*

DISCOVER THE  
NEXT-GENERATION 2021

# ESCALADE

---

ARRIVING LATE 2020



# THE SPOTLIGHT IS YOURS

Only the 2021 Cadillac Escalade brings you industry firsts in technology, obsessive design and human-focused features that transform the road into your red carpet.



PREMIUM LUXURY PLATINUM

SPORT

## BREAKTHROUGH FEATURES



### BE SEEN

## SWEEPING OLED DISPLAY

- Industry's first-ever curved OLED display
- Offers more than 38" diagonal of total display
- More than twice the pixel density of a 4K TV
- The largest color range in the industry
- Bold imagery, high contrast and perfect blacks



### BE HEARD

## AKG® AUDIO SYSTEM

- Exclusive technology from AKG,<sup>1</sup> leaders in professional audio equipment
- Available Studio Reference system with 36 speakers<sup>2</sup> at varying heights
  - Offers 360-degree sound immersion
  - Front passenger volume control
  - Conversation Enhancement



### BE MOVED

## AVAILABLE SUPER CRUISE™

- World's first true hands-free driver assistance feature<sup>3</sup> for compatible highways
- **New for Super Cruise:** Lane change on demand when turn signal is engaged

1 AKG is a trademark of AKG Acoustics GmbH, registered in the United States and/or other countries.

2 Standard on Platinum trim level and optional on Premium Luxury and Sport trim levels.

3 Even while using the Super Cruise driver assistance feature, always pay attention while driving and do not use a hand-held device. Visit [cadillacsupercruise.com](http://cadillacsupercruise.com) for compatible highways and more information. Requires properly equipped vehicle, active Super Cruise subscription, working electrical system, cell reception, and GPS signal.



## TECHNOLOGY

# YOU RUN THE SHOW

From the driver-centric curvature of the OLED display to immersive 360-degree audio, impeccably integrated technology puts you center stage.



The OLED infotainment<sup>1</sup> and instrument panel works like your smartphone—a configurable interface with touch and swipe interaction.

Second-row passengers get first-class amenities. Available Rear Seat Entertainment includes first-in-class 12.6" diagonal HD displays.



Technology goes beyond screens. Available soft-close doors, cabin air ionizer and available console refrigerator make your drive as impressive as your arrival.



1 Functionality varies by model. Full functionality requires compatible Bluetooth® and smartphone, and USB connectivity for some devices.

## INTERIOR

# ENDLESSLY CAPTIVATING

An inviting interior that feels invite-only. Escalade is brimming with luxurious materials, stunning craftsmanship and design firsts.



Obsession with detail is evident every place you look—from a variety of custom woods to intricate stitching throughout.



Choose from several interior personas, each with well-appointed details such as fabric inspired by the Escala concept vehicle.



Elegantly lit, inside and out. A crest on the OLED display illuminates as you approach the vehicle while interior ambient lighting elevates the atmosphere.

## EXTERIOR

# A COMMANDING PRESENCE

Powerful styling stops people in their tracks. Make your entrance known with Escalade's signature exterior design features:

- Three distinctly bold grilles
- Full LED horizontal headlights
- Dramatic 3-foot taillamps
- Standard 22-inch wheels
- Signature Cadillac LED blade daytime running lights
- Design cues from Cadillac Escala concept vehicle





## SPECS

# DETAILS AT A GLANCE

- Standard 6.2L V8 engine and available 3.0L Diesel
- 420 HP and 460 lb.-ft. of torque with 6.2L V8 engine
- 10-speed transmission
- *Available* Air Ride Adaptive Suspension
- *Available* Electronic Limited Slip Differential
- New Dynamic Fuel Management software that deactivates individual cylinders for efficiency



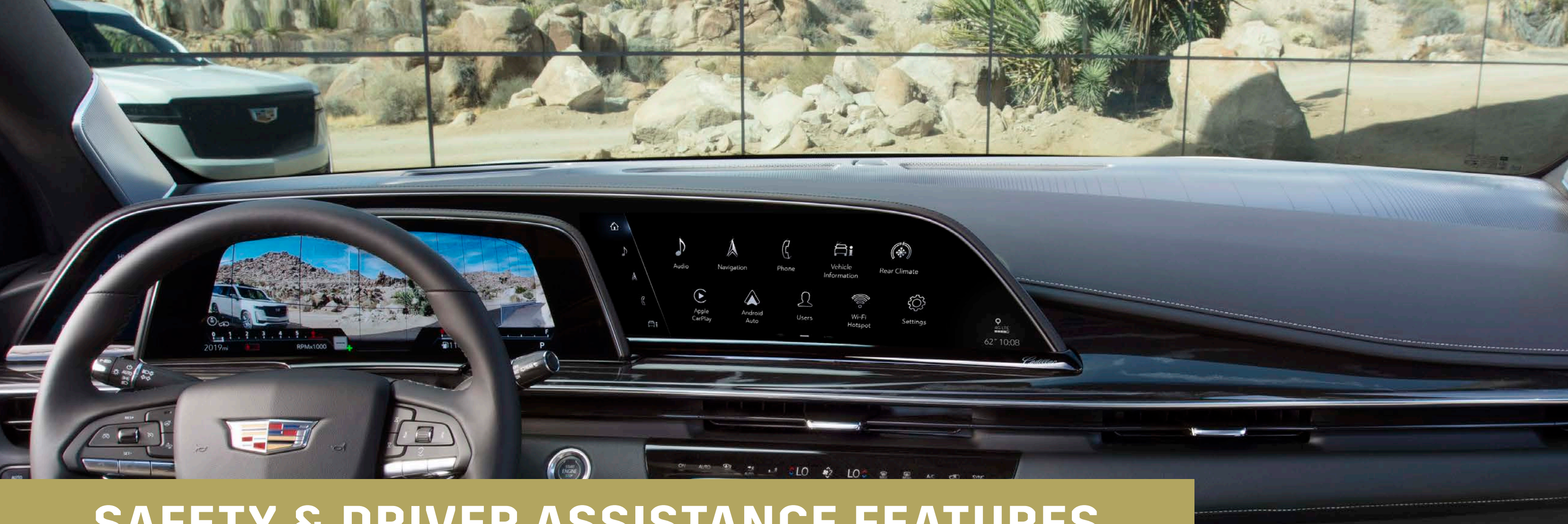
## MORE SPACE THAN EVER

Escalade's new independent rear suspension grants the cabin next-level spaciousness—so get comfortable.

- 10.1 additional inches of third-row leg room<sup>1</sup>
- Second and third row seats fold to create nearly flat load floor
- ESV best-in-class cargo room behind first, second and third rows
- Up to 142.8 max cubic feet of cargo room in ESV<sup>2</sup>
- Sliding second-row seating to accommodate passengers and cargo

<sup>1</sup> Compared to the previous generation short-wheel-base Escalade.

<sup>2</sup> With rear seats folded down. Cargo and load capacity limited by weight and distribution.



## SAFETY & DRIVER ASSISTANCE FEATURES

# FOCUS ON THE DESTINATION

An advanced suite of standard and available driver assistance features help keep your eyes on the road.

### VIEWS

- HD Surround Vision Camera<sup>1</sup>
- *Available* full-color Head-Up Display
- *Available* Night Vision System<sup>1</sup>
- *Available* Rear Camera Mirror<sup>1</sup>

### DRIVER ASSISTANCE

- *Available* Super Cruise™<sup>2</sup> with Lane Change
- Augmented Reality Navigation<sup>3</sup>
- Enhanced Automatic Parking Assist<sup>1</sup>

### ALERTS

- Front Pedestrian Braking<sup>1</sup>
- Automatic Emergency Braking<sup>1</sup>
- Safety Alert Seat<sup>1</sup>
- *Available* Lane Change Alert with Side Blind Zone Alert<sup>1</sup>
- *Available* Lane Keep Assist with Lane Departure Warning<sup>1</sup>

## FEATURED PACKAGE

### PERFORMANCE PACKAGE

Includes Electronic Limited Slip Differential, Magnetic Ride Control and Trailing Integration Package (featuring Trailer Cameras, Integrated Brake Controller, Hitch Guidance with Hitch View,<sup>1</sup> Trailing App,<sup>4</sup> Trailer Side Blind Zone Alert<sup>1</sup> and Theft Alert)

<sup>1</sup> Read the vehicle Owner's Manual for more important feature limitations and information.

<sup>2</sup> Even while using the Super Cruise driver assistance feature, always pay attention while driving and do not use a hand-held device. Visit [cadillacsupercruise.com](http://cadillacsupercruise.com) for compatible highways and more information. Requires properly equipped vehicle, active Super Cruise subscription, working electrical system, cell reception and GPS signal.

<sup>3</sup> Map coverage available in the United States, Puerto Rico and Canada.

<sup>4</sup> Device data connection required. Available on select Apple and Android devices. Some features require active service plan and working electrical system. Service availability, features and functionality vary by vehicle. User terms and limitations apply.

# BOLDLY DESIGNED, ALL YOURS

You know luxury is getting exactly what you want. That's why Escalade offers five distinct trims, each expressive in its own way.

## LUXURY

- Curved OLED screens with 38" diagonal of total display
- 6.2L V8 engine with Dynamic Fuel Management
- AKG® 19-speaker Studio Sound System
- 22" 14-spoke alloy wheels with Bright Silver finish
- HD Surround Vision<sup>1</sup>
- *Available* Duramax® 3.0L Turbo-Diesel engine

## PREMIUM LUXURY *(INCLUDES LUXURY CONTENT +)*

- Panoramic sunroof
- Rear Camera Mirror<sup>1</sup> with Remote Wash
- Full-color Head-Up Display<sup>1</sup>
- 22" 14-spoke alloy wheel with Polished finish
- Rear Cross Traffic Alert,<sup>1</sup> Lane Change Alert with Side Blind Zone Alert,<sup>1</sup> Lane Keep Assist with Lane Departure Warning<sup>1</sup>
- Enhanced Automatic Parking Assist<sup>1</sup>
- *Available* Super Cruise™<sup>2</sup> driver assistance feature

## SPORT *(INCLUDES PREMIUM LUXURY CONTENT +)*

- Intricate Sport Mesh Gloss-Black grille
- 22" 12-spoke polished alloy wheels with Dark Android finish
- Performance Package including Electronic Limited Slip Differential, Magnetic Ride Control, Trailering Integration Package
- *Available* Air Ride Adaptive Suspension with Drive Modes

## PREMIUM LUXURY PLATINUM & SPORT PLATINUM

*(INCLUDES PREMIUM LUXURY OR SPORT CONTENT + DRIVER ASSIST TECH PACKAGE CONTENT +)*

- Leather-wrapped instrument cluster, console and upper door panels
- 16-way driver and front passenger seats with heat/vent and massage feature
- Unique Platinum wheel and grille in Premium Luxury Platinum trim
- AKG® Studio Reference 36-speaker system
- Rear Seat Entertainment
- *Available* Console Refrigerator with Freezer Mode

AKG is a trademark of AKG Acoustics GmbH, registered in the United States and/or other countries.

<sup>1</sup> Read the vehicle Owner's Manual for more important feature limitations and information.

<sup>2</sup> Even while using the Super Cruise driver assistance feature, always pay attention while driving and do not use a hand-held device. Visit [cadillacsupercruise.com](http://cadillacsupercruise.com) for compatible highways and more information. Requires properly equipped vehicle, active Super Cruise subscription, working electrical system, cell reception and GPS signal.



## TRIM PERSONAS

# YOUR OWN PERSONAL FASHION SHOW

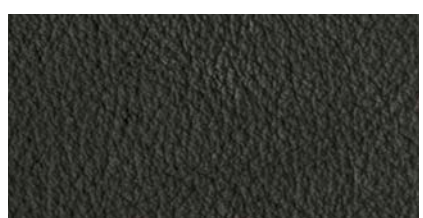
Purposeful design, obsessive detail and remarkable craftsmanship. All are present in Escalade's uniquely curated personas. Which one are you?

### LUXURY

#### JET BLACK



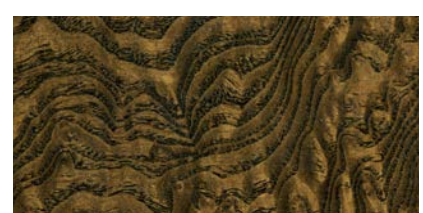
Linear  
Tiger wood



Jet Black  
leatherette

### PREMIUM LUXURY PLATINUM & SPORT PLATINUM

#### JET BLACK

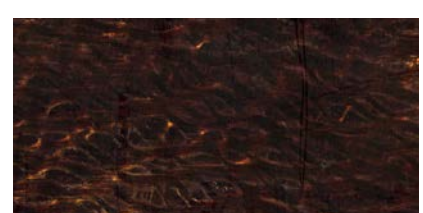


Natural Figured  
Ash wood



Mondrian  
quilted seating

#### DARK AUBURN / JET BLACK

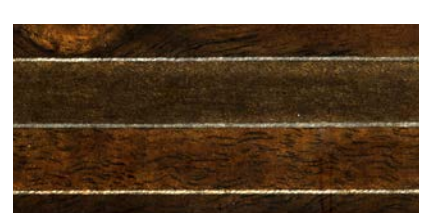


Bitter  
Lace wood



Mondrian  
quilted seating

#### WHISPER BEIGE / GIDEON



Linear  
Marquetry wood



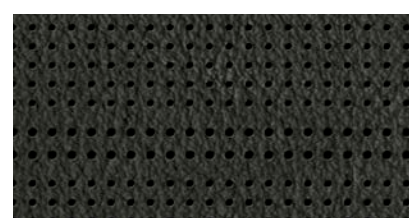
Mini Chevron  
perforated seating

### SPORT

#### JET BLACK



Zebra wood

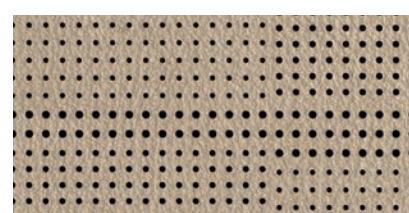


Precision  
perforated seating

#### WHISPER BEIGE / JET BLACK



Zebra wood



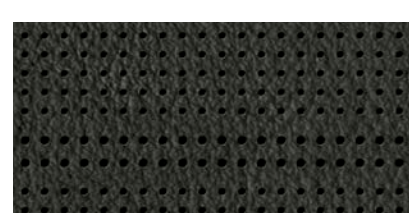
Precision  
perforated seating

### PREMIUM LUXURY

#### JET BLACK

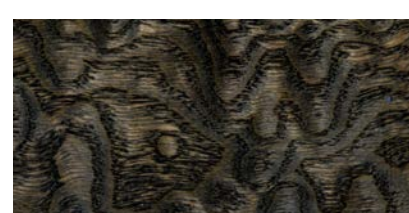


Linear  
Tiger wood



Precision  
perforated seating

#### PARCHMENT / JET BLACK



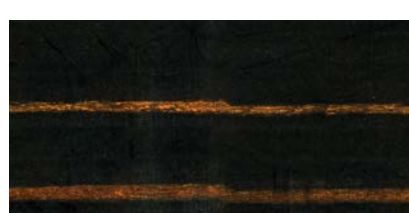
Parchment Tamo  
Ash wood



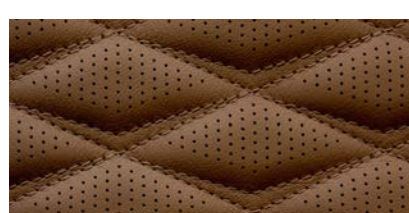
Mini Chevron  
perforated seating

### SPORT & PREMIUM LUXURY

#### BRANDY / VERY DARK ATMOSPHERE<sup>1</sup>



Fine Line  
Brandy wood



Faceted  
quilted seating

<sup>1</sup> Available at extra cost.



## COLORS & WHEELS

# MAKE YOUR STATEMENT

Choose from 8 premium exterior paints, available in both Escalade and ESV.

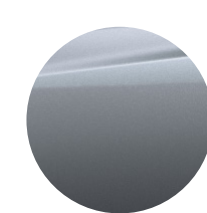
## EXTERIOR COLORS



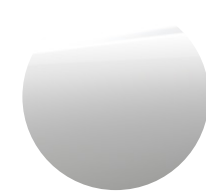
Black Raven



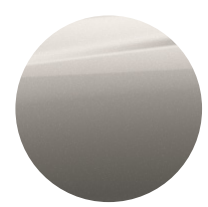
Shadow Metallic<sup>1</sup>



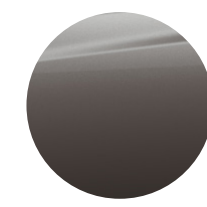
Satin Steel Metallic<sup>1</sup>



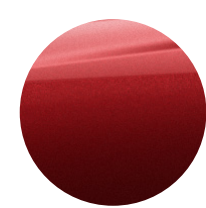
Crystal White Tricoat<sup>1</sup>



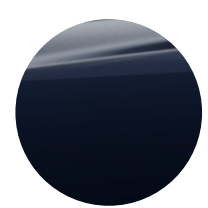
Sandstone Metallic<sup>1</sup>



Dark Mocha Metallic<sup>1</sup>



Infrared Tintcoat<sup>1</sup>



Dark Moon Blue Metallic<sup>1</sup>

## WHEELS



LUXURY

22" 14-spoke alloy with Bright Silver finish



PREMIUM LUXURY

22" 14-spoke alloy with Polished finish



SPORT & SPORT PLATINUM

22" 12-spoke polished alloy with Dark Android finish



PLATINUM

22" 10-spoke polished alloy with Dark Android finish & laser etch



22" 12-spoke Chrome finish<sup>3</sup>



22" multi-spoke Polished and Dark Android finishes<sup>3</sup>



22" 12-spoke High Gloss-Black finish<sup>1</sup>

AVAILABLE ON ALL TRIMS

<sup>1</sup> Available at extra cost.



# THANK YOU FOR YOUR INTEREST

Follow the links below to experience the interactive Visualizer tool or subscribe to all things Escalade.

[VISUALIZE YOUR OWN](#)

[SUBSCRIBE TO UPDATES](#)



*Thank you for your interest in the incomparable*

**2021 CADILLAC ESCALADE**

---

**YOUR SALES & LEASING CONSULTANT:**

**DEALERSHIP:**