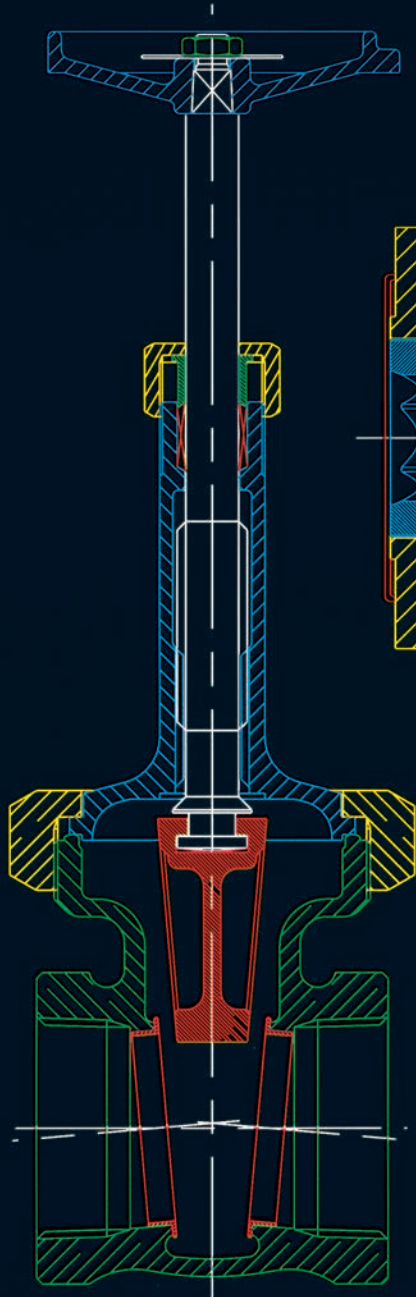


CONDENSED CATALOG



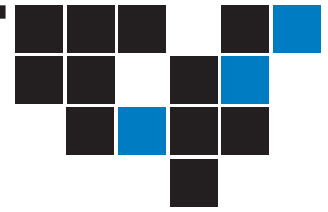
- ▶ BRONZE ■ IRON
- ▶ ULTRAPURE
- ▶ ULTRAPRESS
- ▶ BUTTERFLY
- ▶ HIGH PERFORMANCE BUTTERFLY
- ▶ COMMERCIAL BALL
- ▶ INDUSTRIAL BALL
- ▶ CAST STEEL
- ▶ DRY BULK
- ▶ TRANSFORMER
- ▶ FIRE PROTECTION
- ▶ ACTUATION AND CONTROLS

INNOVATION IN EVERY VALVE



MILWAUKEE VALVE

CONTENTS



UNIBODY INDUSTRIAL BALL VALVES	3
2-PIECE INDUSTRIAL BALL VALVES	4
3-PIECE INDUSTRIAL BALL VALVES	5
HIGH-PRESSURE, SEAL-WELDED, INDUSTRIAL BALL VALVES	5
DIVERTER BALL VALVES	5
LUG-BODY AND WAFER-BODY BUTTERFLY VALVES	6, 7
M Series Standard Industrial-Application Butterfly Valves	
C Series Commercial-Construction Applications	
H Series High-Pressure Applications	
HP Series High Performance Applications	
O Series Oilfield Applications	
U Series Low-Pressure Applications	
CAST STEEL GATE, GLOBE AND CHECK VALVES	8
ELECTRIC AND PNEUMATIC VALVE ACTUATION	9
IRON GATE, CLIP-GATE, GLOBE AND CHECK VALVES	10
SILENT CHECK VALVES	10,18
COMMERCIAL BRONZE BALL VALVES	11
COMMERCIAL BRASS BALL VALVES	12
COMMERCIAL BRONZE BUTTERBALL® BUTTERFLY VALVES	18
BRONZE GATE VALVES	13
BRONZE GLOBE AND ANGLE VALVES	14
BRONZE CHECK VALVES	15
ULTRAPURE® VALVES	16,17
FIRE PROTECTION VALVES	18
TANK AND TRAILER/SAMPLER VALVES	19





INDUSTRIAL BALL VALVES*



F90SS150R-02



F91SS150R-02
(Firesafe)



10SSOD-02-LL

UNIBODY, FLANGED-END

Standard Port

F90CS150R-N1

Class 150, TEFLON® NXT-75 Seats, Carbon Steel Body, Stainless Steel Ball & Stem, Actuator Mounting Pads 1/2" Thru 6"

F90CS300R-N1

Class 300, TEFLON® NXT-75 Seats, Carbon Steel Body, Stainless Steel Ball & Stem, Actuator Mounting Pads 1/2" Thru 6"

F90SS150R-N1

Class 150, TEFLON® NXT-75 Seats, Stainless Steel Body, Stainless Steel Ball & Stem, Actuator Mounting Pads 1/2" Thru 6"

F90SS300R-N1

Class 300, TEFLON® NXT-75 Seats, Stainless Steel Body, Stainless Steel Ball & Stem, Actuator Mounting Pads 1/2" Thru 6"

UNIBODY, FIRESAFE, FLANGED-END

Standard Port

F91CS150R-N1

Class 150, TEFLON® NXT-75 Seats, Carbon Steel Body, Stainless Steel Ball & Stem, Firesafe to API 607, Actuator Mounting Pads 1/2" Thru 6"

F91CS300R-N1

Class 300, TEFLON® NXT-75 Seats, Carbon Steel Body, Stainless Steel Ball & Stem, Firesafe to API 607, Actuator Mounting Pads 1/2" Thru 6"

F91SS150R-N1

Class 150, TEFLON® NXT-75 Seats, Stainless Steel Body, Stainless Steel Ball & Stem, Firesafe to AP 607, Actuator Mounting Pads 1/2" Thru 6"

F91SS300R-N1

Class 300, TEFLON® NXT-75 Seats, Stainless Steel Body, Stainless Steel Ball & Stem, Firesafe to API 607, Actuator Mounting Pads 1/2" Thru 6"

UNIBODY, FIRESAFE

Reduced Port

10CSOD-02-LL

2000 WOG, Threaded Ends, Carbon Steel Body, Stainless Steel Ball & Stem, Firesafe to API 607, Actuator Mounting Pads 1/4" Thru 2"

10SSOD-02-LL

2000 WOG, Threaded Ends, Stainless Steel Body, Stainless Steel Ball & Stem, Firesafe to API 607, Actuator Mounting Pads 1/4" Thru 2"

*Made to the latest ASTM & ASME specifications. For additional information see website.

TEFLON is a registered trademark of DuPont

INDUSTRIAL BALL VALVES*



F201CS22

20SSOR-02-LL

22SSOR-02

2-PIECE, FLANGED, FIRE-SAFE

Full Port

F201CSN2

Class 150, TEFLON® NXT-75 Seats, Carbon Steel Body, Stainless Steel Ball & Stem, Actuator Mounting Pads, Firesafe to API 607, 1/2" Thru 12"

F203CSN2

Class 300, TEFLON® NXT-75 Seats, Carbon Steel Body, Stainless Steel Ball & Stem, Actuator Mounting Pads, Firesafe to API 607, 1/2" Thru 8"

F201SSN2

Class 150, TEFLON® NXT-75 Seats, Stainless Steel Body, Stainless Steel Ball & Stem, Actuator Mounting Pads, Firesafe to API 607, 1/2" Thru 12"

F203SSN2

Class 300, TEFLON® NXT-75 Seats, Stainless Steel Body, Stainless Steel Ball & Stem, Actuator Mounting Pads, Firesafe to API 607, 1/2" Thru 8"

2-PIECE, THREADED

Standard Port and Full Port

20SSOR-N1

Standard Port, 2000 WOG 1/4" Thru 1", 1500 WOG 1-1/4" Thru 2", Stainless Steel Body, Stainless Steel Ball & Stem, TEFLON® NXT-75 Seats, Threaded Ends, Actuator Mounting Pads 1/4" Thru 2"

20CSOR-N1

Standard Port, 2000 WOG 1/4" Thru 1", 1500 WOG 1-1/4" Thru 2", Carbon Steel Body, Stainless Steel Ball & Stem, TEFLON® NXT-75 Seats, Threaded Ends, Actuator Mounting Pads 1/4" Thru 2"

20BSOR-N1

Standard Port, 600 WOG, Bronze Body, Stainless Steel Ball & Stem, TEFLON® NXT-75 Seats, Threaded Ends, Actuator Mounting Pads 1/4" Thru 2"

20BBOR-N1

Standard Port, 600 WOG, Bronze Body, Chrome Plated Ball, Bronze Stem, TEFLON® NXT-75 Seats, Threaded Ends, Actuator Mounting Pads 1/4" Thru 2"

BA260

Full Port, 1000 WOG, Stainless Steel Body and Ball, RPTFE Seats, Locking Handle, Actuator Mounting Pads, 1/4" thru 3"

2-PIECE, SEAL-WELDED

Standard Port

22SSOR-02

2000 WOG 1/4" Thru 1", 1500 WOG 1 1/4" Thru 2", Stainless Steel Body, Stainless Steel Ball & Stem, TEFLON® NXT-75 Seats, Threaded Ends, Actuator Mounting Pads 1/4" Thru 2"

22CSOR-02

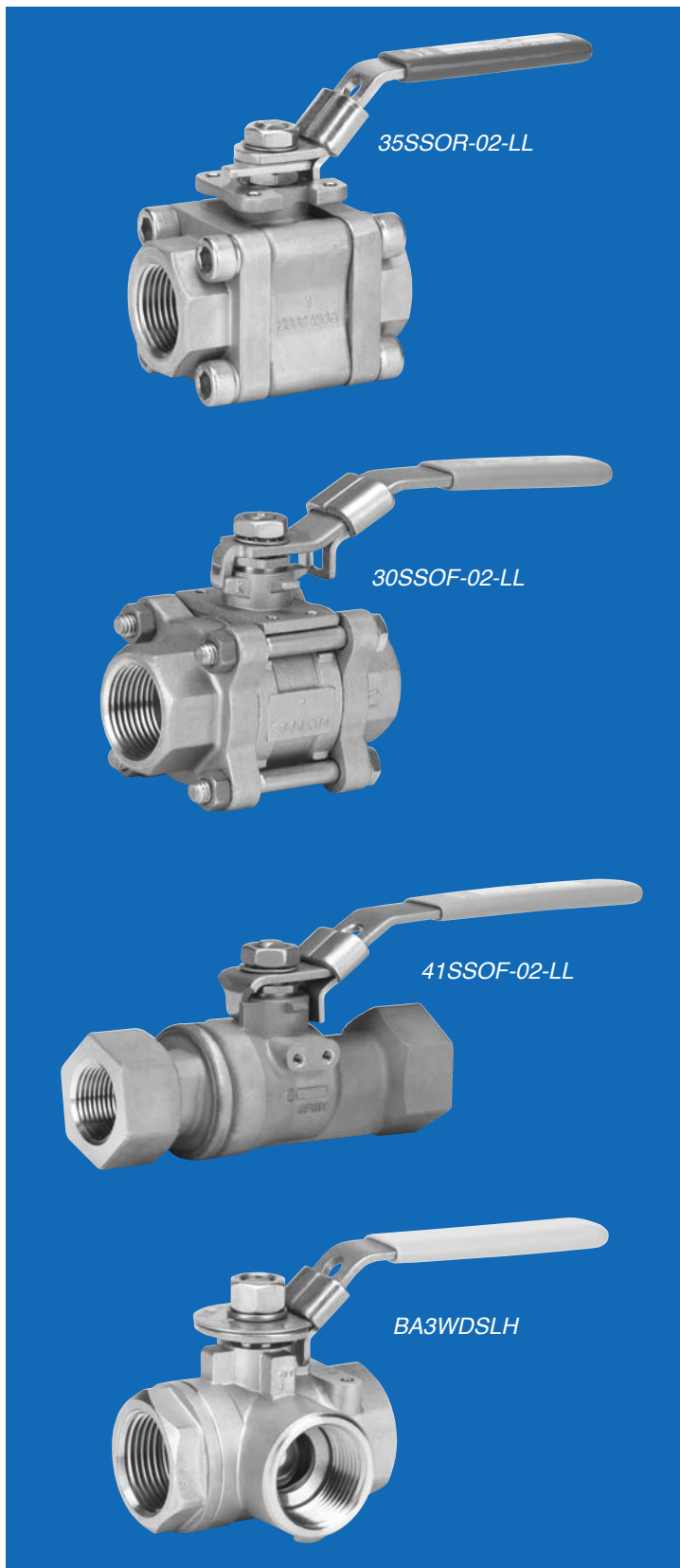
2000 WOG 1/4" Thru 1", 1500 WOG 1-1/4" Thru 2", Carbon Steel Body, Stainless Steel Ball & Stem, TEFLON® NXT-75 Seats, Threaded Ends, Actuator Mounting Pads 1/4" Thru 2"

*Made to the latest ASTM & ASME specifications. For additional information see website.

TEFLON is a registered trademark of DuPont



INDUSTRIAL BALL VALVES*



3-PIECE, ENCLOSED-BOLT, FIRE-SAFE

Standard Port and Full Port

35SSOR-LL

Reduced Port, 2000 WOG, Carbon Steel Body, Stainless Steel Ball & Stem, TEFLON® NXT-75 Seats, Firesafe to API 607, Live Loaded Graphite Packing, Threaded Ends, Actuator Mounting Pads 1/4" Thru 2"

35SSON-LL

Reduced Port, 2000 WOG, Stainless Steel Body, Stainless Steel Ball & Stem, Live Loaded Flexible Graphite Packing, Threaded Ends, TEFLON® NXT-75 Seats, Firesafe to API 607, Actuator Mounting Pads 1/4" Thru 2"

35FCSON-LL

Full Port, 2000 WOG, Carbon Steel Body, Stainless Steel Ball & Stem, TEFLON® NXT-75 Seats, Firesafe to API 607, Live Loaded Graphite Packing, Threaded Ends, Actuator Mounting Pads 1/4" thru 2"

35FSSON-LL

Full Port, 2000 WOG, Stainless Steel Body, Stainless Steel Ball & Stem, TEFLON® NXT-75 Seats, Firesafe to API 607, Live Loaded Graphite Packing, Threaded Ends, Actuator Mounting Pads 1/4" thru 2"

• Available with socket-weld ends

3-PIECE, FULL PORT

30SSOF-02

1000 WOG, Stainless Steel Body, Stainless Steel Ball & Stem, PTFE V-Ring Packing, Threaded Ends, Actuator Mounting Pads 1/4" Thru 2"

30CSOF-02

1000 WOG, Carbon Steel Body, Stainless Steel Ball & Stem, PTFE V-Ring Packing, Threaded Ends, Actuator Mounting Pads 1/4" Thru 2"

30BSOF-02

600 WOG, Bronze Body, Stainless Steel Ball & Stem, PTFE V-Ring Packing, Threaded Ends, Actuator Mounting Pads 1/4" Thru 2"

30BBOF-02

600 WOG, Bronze Body, Chrome Plated Ball & Stem, PTFE V-Ring Packing, Threaded Ends, Actuator Mounting Pads 1/4" Thru 2"

• Available with socket-weld or solder ends

HIGH-PRESSURE, SEAL-WELDED, FIRE-SAFE, FULL PORT

41SSOF-02-LL

Full Port, Stainless Steel Body, Stainless Steel Ball & Stem, Threaded Ends, Actuator Mounting Pads, 1/2" Thru 1-1/2" Class 900, 2" Thru 2-1/2" Class 600

41CSOF-02-LL

Full Port, Carbon Steel Body, Stainless Steel Ball & Stem, Threaded Ends, Actuator Mounting Pads, 1/2" Thru 1-1/2" Class 900, 2" Thru 2-1/2" Class 600

• Available with socket-weld, extended butt-weld ends and 3000# configuration. Please Consult Factory

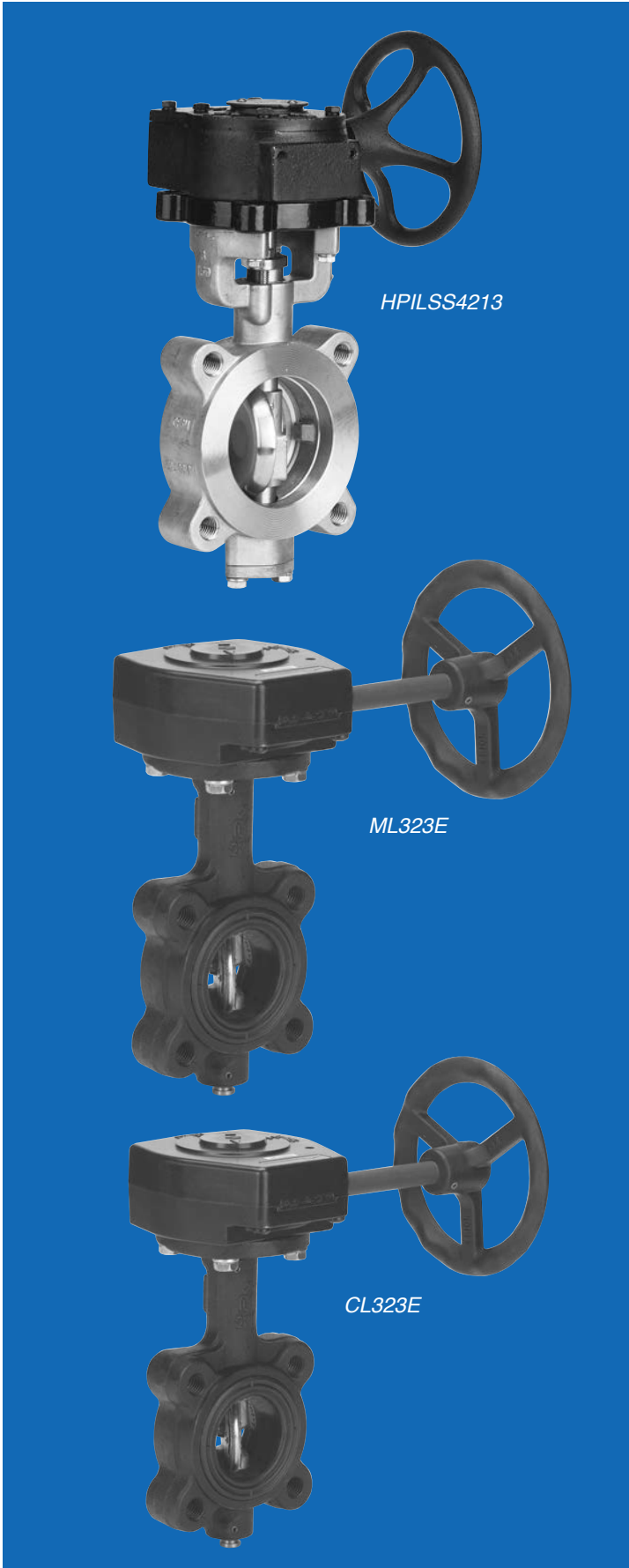
DIVERTER VALVE

BA3WDSLH 1000 WOG, Stainless Steel Body, Stainless Steel Ball & Stem, 3-Way Diverter, Threaded Ends, 3/8" Thru 2"

*Made to the latest ASTM & ASME specifications. For additional information see website.

TEFLON is a registered trademark of DuPont

BUTTERFLY VALVES



HPILSS4213

ML323E

CL323E

HP Series High Performance Butterfly

Double offset valve designed to MSS SP-68, ASME B16.34, and API 609, Category B. Available in lug or wafer body, ANSI Class 150 and 300 in sizes 2 -1/2" – 36"

Body: A216 WCB carbon steel or ASTM A351 CF8M stainless steel

Disc: ASTM A351 CF8M stainless steel

Stem: 17-4PH stainless steel or 316

Seats: RTFE standard, Virgin PTFE, UHMWPE and others optional

These valves feature a double offset seat and disc design for superior sealing with no leakage and minimal seat contact and wear. The valves are available with on-board actuation direct from the factory, 10 position locking lever handles (up to 8 inch), gear operators on all valves, for other actuation options or accessories, consult the factory.

M Series – Industrial Butterfly

Concentric valve to MSS SP-67, Available in lug or wafer body, 2" – 48" 2"-12" rated at 200 WOG, 14"-48" rated at 150 WOG

Body: Cast iron ASTM A126 Class B or Ductile iron ASTM A536 65-45-12

Disc: Ni plated DI, AIBr, or stainless steel, nylon and epoxy coated optional

Stem: 416 or 316 stainless steel

Liner: EPDM, Buna, FDA Neoprene, PTFE, Hypalon, and many others optional

These valves feature a phenolic backed rubber seat with optimized disc and stem design for reliable sealing, low torque, and long life. Milwaukee's M Series Valves from 2" through 12" are approved by the U.S. Coast Guard for Category A service. Lug butterfly valves 2" through 12" are bi-directional dead end service to 200 psi max. BUNA and EPDM only. All others 150 psi. uni-directional field repairable. Valves 14" through 24" rated for uni-directional dead end service to 100 psig. The valves are available with on-board actuation direct from the factory, 10 position locking lever handles (up to 12 inch), gear operators, or other options – consult the factory.

C Series – Commercial Butterfly

Concentric valve to MSS SP-67, Available in lug or wafer body, 2" – 24" 2"-12" rated at 200 WOG, 14"-24" rated at 150 WOG

Body: Cast iron ASTM A126 Class B

Disc: AIBr

Stem: 416 stainless steel

Liner: EPDM

These valves are based on our M Series, but intended for commercial application in HVAC and similar systems. The valves feature a phenolic backed rubber seat with optimized disc and stem design for reliable sealing, low torque, and long life. Milwaukee's C Series Valves from 2" through 12" are approved by the U.S. Coast Guard for Category A service. Lug butterfly valves 2" through 12" are bi-directional dead end service to 200 psi max. Valves 14" through 24" rated for uni-directional dead end service to 100 psig. The valves are available with on-board actuation direct from the factory, 10 position locking lever handles (up to 12 inch), gear operators, or other options – consult the factory.



BUTTERFLY VALVES



HL323E



OW223B

H Series – High-Pressure Industrial Butterfly

Concentric valve to MSS SP-67, Available in lug or wafer body, 2" - 24" 2"-12" rated at 250 WOG, 14"-24" rated at 200 WOG

Body: Cast iron ASTM A126 Class B or Ductile iron ASTM A536 65-45-12

Disc: Ni Plated DI, AlBr, or stainless steel, nylon and epoxy coated optional

Stem: 416 or 316 Stainless steel

Liner: EPDM, Buna, Viton, FDA Neoprene, PTFE, Hypalon, and many others optional

The H Series is tested and rated for higher-pressure services. These valves feature a phenolic backed rubber seat with optimized disc and stem design for reliable sealing, low torque, and long life. Milwaukee's M Series Valves from 2" through 12" are approved by the U.S. Coast Guard for Category A service. Lug butterfly valves 2" through 12" are bi-directional dead end service to 200 psi max. BUNA and EPDM only. All others 150 psi. uni-directional field repairable. Valves 14" through 24" rated for uni-directional dead end service to 100 psig. The valves are available with on-board actuation direct from the factory, 10 position locking lever handles (up to 12 inch), gear operators, or other options – consult the factory.

U Series – Low-Pressure Butterfly

Concentric Valve to MSS SP-67, Available in lug or wafer body, 2" – 12" rated at 50 WOG

The U Series is a low pressure version of our M Series valve, with a reduced interference seat to reduce torque. These valves are available with a special low friction coating on the liner as an option to further reduce torque and wear in dry bulk services.

The valves are available with on-board actuation direct from the factory, 10 position locking lever handles (up to 12 inch), gear operators, or other options – consult the factory.

O Series – Industrial Butterfly

Concentric valve to MSS SP-67, Available in wafer body, 2" – 12" Bolts between transportation flanges, 2" – 12" rated at 200 WOG

The O Series is a rugged version of our M Series valve, intended for oilfield applications. These valves carry a grease fitting at the upper stem for lubrication for in-line maintenance. The valves are available with on-board actuation direct from the factory, 10 position locking lever handles (up to 12 inch), gear operators, or other options – consult the factory.

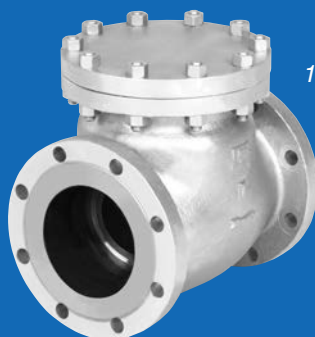
CAST STEEL VALVES



1550CB2



1560CB2



1570CB2

CAST STEEL GATE

1550CB2

Class 150 Flanged, API 600, ASME B16.34 Design, API 598 Tested, 2" Thru 30"

1552CB2

Class 150 Butt weld, API 600, ASME B16.34 Design, API 598 Tested, 2" Thru 24"

3050CB2

Class 300 Flanged, API 600, ASME B16.34 Design, API 598 Tested, 2" Thru 24"

3052CB2

Class 300 Butt weld, API 600, ASME B16.34 Design, API 598 Tested, 2" Thru 24"

6050CB2

Class 600 Flanged, API 600, ASME B16.34 Design, API 598 Tested, 2" Thru 24"

6052CB2

Class 600 Butt weld, API 600, ASME B16.34 Design, API 598 Tested, 2" Thru 24"

CAST STEEL GLOBE

1560CB2

Class 150 Flanged, API 600, ASME B16.34 Design, API 598 Tested, 2" Thru 16"

1562CB2

Class 150 Butt weld, API 600, ASME B16.34 Design, API 598 Tested, 2" Thru 16"

3060CB2

Class 300 Flanged, API 600, ASME B16.34 Design, API 598 Tested, 2" Thru 8"

3062CB2

Class 300 Butt weld, API 600, ASME B16.34 Design, API 598 Tested, 2" Thru 8"

6060CB2

Class 600 Flanged, API 600, ASME B16.34 Design, API 598 Tested, 2" Thru 6"

6063CB2

Class 600 Butt weld, API 600, ASME B16.34 Design, API 598 Tested, 2" Thru 6"

CAST STEEL CHECK

1570CB2

Class 150 Flanged, API 600, ASME B16.34 Design, API 598 Tested, 2" Thru 18"

1572CB2

Class 150 Butt weld, API 600, ASME B16.34 Design, API 598 Tested, 2" Thru 18"

3070CB2

Class 300 Flanged, API 600, ASME B16.34 Design, API 598 Tested, 2" Thru 18"

3072CB2

Class 300 Butt weld, API 600, ASME B16.34 Design, API 598 Tested, 2" Thru 18"

6070CB2

Class 600 Flanged, API 600, ASME B16.34 Design, API 598 Tested, 2" Thru 10"

6073CB2

Class 600 Butt weld, API 600, ASME B16.34 Design, API 598 Tested, 2" Thru 10"



ACTUATION

CONSULT FACTORY FOR MULTI-TURN AUTOMATION

PNEUMATIC ACTUATION

2-Piece Ball Valves

Available on threaded-end and socket-weld-end valves
Available on bronze, carbon-steel and stainless-steel valves
Available on 1/2" to 2" valves

Actuation Options

Double-Acting Actuators
Spring-Return Actuators
Solenoid Valves
Actuator Brackets
Limit Switches
Valve Positioners



3-Piece Ball Valves

Available on threaded-end and socket-weld-end valves
Available on bronze, carbon-steel and stainless-steel valves
Available on 1/2" to 2" valves

Actuation Options

Double-Acting Actuators
Spring-Return Actuators
Solenoid Valves
Actuator Brackets
Limit Switches
Valve Positioners



Flanged-End Ball Valves

Available on 150 and 300 lbs. class valves
Available on 1/2" to 12" valves

Actuation Options

Double-Acting Actuators
Spring-Return Actuators
Solenoid Valves
Actuator Brackets
Limit Switches
Valve Positioners



Butterfly Valves

Available on HP Series High Performance Butterfly
Available in wafer and lugged patterns
Available on Class 150 2 1/2" - 24", Class 300 2 1/2" - 16"

Available on rubber-seated valves
Available on wafer and lugged patterns
Available on 2" to 48" valves

Actuation Options

Double-Acting Actuators
Spring-Return Actuators
Solenoid Valves
Actuator Brackets
Limit Switches
Valve Positioners



ELECTRIC ACTUATION

2-Piece Ball Valves

Available on threaded-end and socket-weld-end valves
Available on bronze, carbon-steel and stainless-steel valves
Available on 1/2" to 2" valves

Actuation Options

120 Volt AC and DC Voltages
NEMA 4 and 7 Housings
4-20 maDC Valve Positioners
Actuator Brackets
Extra Limit Switches
Reversing Actuators



3-Piece Ball Valves

Available on threaded-end and socket-weld-end valves
Available on bronze, carbon-steel and stainless-steel valves
Available on 1/2" to 2" valves

Actuation Options

120 Volt AC and DC Voltages
NEMA 4 and 7 Housings
4-20 maDC Valve Positioners
Actuator Brackets
Extra Limit Switches
Reversing Actuators



Flanged-End Ball Valves

Available on 150 and 300 lbs. class valves
Available on 1/2" to 12" valves

Actuation Options

120 Volt AC and DC Voltages
NEMA 4 and 7 Housings
4-20 maDC Valve Positioners
Actuator Brackets
Extra Limit Switches
Reversing Actuators



Butterfly Valves

Available on HP Series High Performance Butterfly
Available in wafer and lugged patterns
Available on Class 150 2 1/2" - 24", Class 300 2 1/2" - 16"

Available on rubber-seated valves
Available on wafer and lugged patterns
Available on 2" to 48" valves

Actuation Options

120 Volt AC and DC Voltages
NEMA 4 and 7 Housings
4-20 maDC Valve Positioners
Actuator Brackets
Extra Limit Switches
Reversing Actuators



IRON GATE & CLIP GATE, GLOBE, CHECK, SILENT CHECK



2882M

IRON GATE & CLIP GATE

2882A or 2882M

125 WSP 200 WOG, Non-Rising Stem, IBBM, MSS SP-70, A Available 2" Thru 12", M Available 2" Thru 24"

2882A26 or 2882M26

125 WSP 200 WOG, Non-Rising Stem, All Iron, MSS SP-70, A Available 2" Thru 12", M Available 2" Thru 24"

2885A or 2885M

125 WSP 200 WOG, OS & Y, IBBM, MSS SP-70, A Available 2" Thru 12", M Available 2" Thru 24"

2885A26 or 2885M26

125 WSP 200 WOG, OS & Y, All Iron, MSS SP-70, A Available 2" Thru 12", M Available 2" Thru 36"

2887M

150 WSP 225 WOG, Bronze Trim, Threaded End, 1/4" Thru 2"
125 WSP 175 WOG, Bronze Trim, Threaded End, 2" Thru 4"

2888M

150 WSP 225 WOG, All Iron 1/4" Thru 2"
125 WSP 175 WOG, All Iron 2" Thru 4"

2885M13

3% Nickel Iron, OS & Y, Iron Body, SS Trim, MSS SP-70, 2" Thru 12"

2894A or 2894M

250 WSP 500 WOG, OS & Y, IBBM, MSS SP-70, A Available 2" Thru 12", M Available 2" Thru 12"



2888M

IRON GLOBE

2981A or 2981M

125 WSP 200 WOG, MSS SP-85, A Available 2" Thru 10", M Available 2" Thru 10"

2983 or 2983M

250 WSP 500 WOG, IBBM, MSS SP-85, A Available 2" Thru 6", M Available 2 1/2" Thru 6"

2986M

Angle Globe, 125 WSP, 200 WOG, MSS SP-85, 2" Thru 8"

2986M-SC

Angle Stop Check, Globe Style, 125 WSP, 200 WOG, MSS SP-85, 2" Thru 8"



2981A



2974A

IRON CHECK

2974A or 2974M

125 WSP 200 WOG, IBBM, MSS SP-71, A Available 2" Thru 12", M Available 2" Thru 24"

2974MLW

125 WSP 200 WOG, IBBM, MSS SP-71, Lever and Weight, 2" Thru 12"

2974A26 or 2974M26

125 WSP 200 WOG, All Iron, A Available 2" Thru 12", M Available 2" Thru 24"

2974M13

3% Nickel Iron, Iron Body, SS Trim, MSS SP-71, 2" Thru 12"

2970 or 2970M

250 WSP 500 WOG, IBBM, MSS SP-71, 2-1/2" Thru 6"

SILENT CHECK

*1400

Class 125, Wafer-Style Cast-Iron Body, SS Disc, SS Spring, ANSI NSF-372, **
2" Thru 10" (Also Available Class 250)

*1800

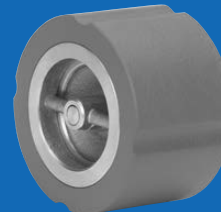
Class 125, Globe-Style Cast-Iron Body, SS Disc, SS Spring, ANSI NSF-372
2-1/2" Thru 24" (Also Available Class 250)

*8800

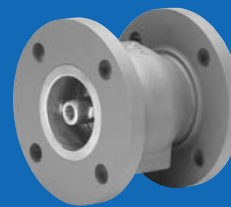
Class 125, Wafer-Style Cast-Iron Body, Bronze Double Disc
2" Thru 16", **

* or "M" designates International

** The wetted surface on this product with S.S. Trim contacted by water contains less than one quarter of one percent (.25%) of lead weight.

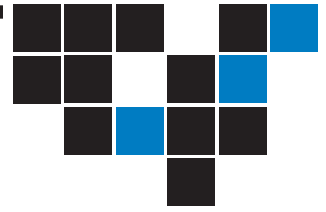


1400

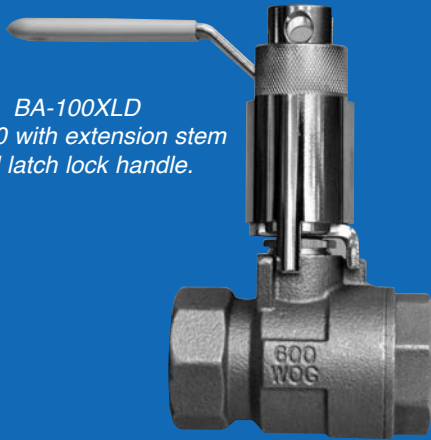


1825

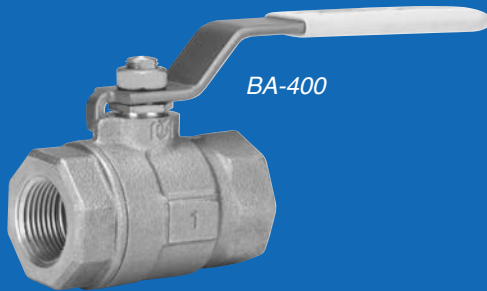
COMMERCIAL BALL VALVES



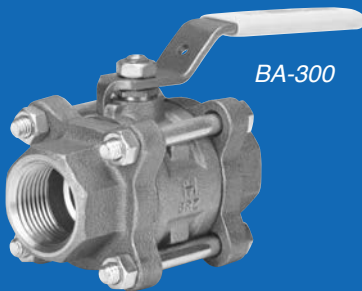
BA-100-TIH



BA-100XLD
BA-100 with extension stem
and latch lock handle.



BA-400



BA-300

2-PIECE BRONZE

Standard Port

BA-100 *** 600 WOG 150 WSP, MSS SP-110, Threaded, 1/4" Thru 3"

BA-100TIH 600 WOG 150 WSP, MSS SP-110, Threaded, Insulated handle 1/4" Thru 2"

BA-100S *** 600 WOG 150 WSP, MSS SP-110, Stainless Ball & Stem, Threaded, 1/4" Thru 3"

BA-100E 600 WOG 150 WSP, MSS SP-110, Threaded With Exhaust Port, 1/4" Thru 2"

BA-100ELD 600 WOG 150 WSP, MSS SP-110, Threaded With Exhaust Port, Latch Lock Handle, 1/4" Thru 2"

BA-100H 600 WOG, MSS SP-110, Threaded With Hose, Cap and Chain, 1/2" And 3/4" *

BA-100M 600 WOG 150 WSP, MSS SP-110, Threaded With Male Threaded End, 1/4" Thru 2"

BA-150 *** 600 WOG 150 WSP, MSS SP-110, Solder, 3/8" Thru 3"

BA-150S *** 600 WOG 150 WSP, MSS SP-110, Stainless Ball & Stem, Solder, 3/8" Thru 3"

BA-150H 600 WOG, MSS SP-110, Solder With Hose, Cap And Chain, 1/2" And 3/4" *

BA-100XLD/BA150XLD Same as BA-100/BA150 With Extension Stem, and Latch Lock Handle, Threaded (BA-100) or Solder (BA-150)

Full Port

BA-400 *** 600 WOG 150 WSP, MSS SP-110, Threaded, 1/4" Thru 2"

BA-400S *** 600 WOG 150 WSP, MSS SP-110, Threaded, Stainless Steel Ball & Stem, 1/4" Thru 2"

BA400UT/BA400SUT Threaded Full Port Ball Valve with Union End (UT = Threaded Tailpiece), 600 WOG, MSS SP-110, 1/4" - 2". Consult Factory for other End Configurations.

BA-400S3 *** 250 WOG 150 WSP, MSS SP-110, Threaded, Stainless Steel Ball & Stem, 1/4" Thru 2"

BA-450 *** 600 WOG 150 WSP, MSS SP-110, Solder, 1/4" Thru 2"

BA-450S 600 WOG 150 WSP, MSS SP-110, Stainless Ball & Stem, Solder, 1/4" Thru 2"

B450US/BA450SUS Solder Full Port Ball Valve with Union End (US = Solder Tailpiece), 600 WOG, MSS SP-110, 1/4" - 2". Consult Factory for other End Configurations

B400XLD/BA450XLD Same as BA-400/BA450

With Extension Stem and Locking Handle, Threaded (BA-400) or Solder (BA-450)

3-PIECE BRONZE***

Full Port

BA-300 600 WOG 150 WSP, MSS SP-110, Threaded Ends, 1/4" Thru 2" *

BA-300S 600 WOG 150 WSP, MSS SP-110, Threaded Ends, Stainless Steel Ball & Stem, 1/4" Thru 2" *

BA-300SB 600 WOG 150 WSP Silbrazed, 1/2" Thru 2" *

BA-350 600 WOG 150 WSP, Solder Ends, 3/8" Thru 2" *

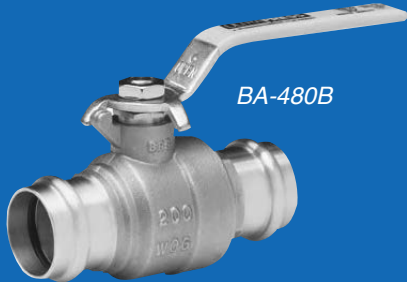
BA-350S 600 WOG 150 WSP, Solder Ends, Stainless Steel Ball and Stem, 3/8" Thru 2" *

* Available with Gauge Ports or Oxygen Cleaned

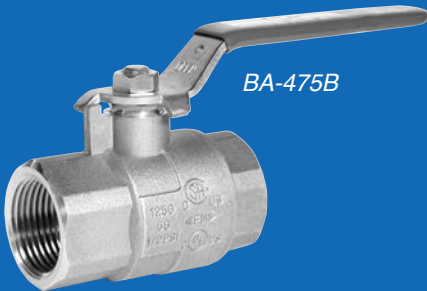
** Available in Tube End (BA350TE)

*** Available with **THE INSULATOR/MS (TIH)** Handle 1/4" - 2"

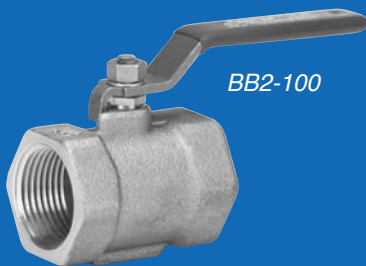
COMMERCIAL BALL VALVES



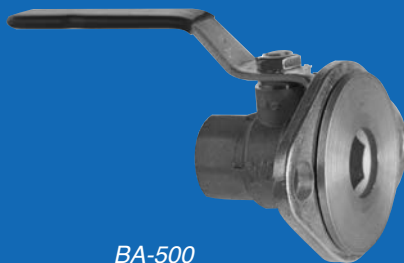
BA-480B



BA-475B



BB2-100



BA-500

2-PIECE BALL FORGED BRASS

Standard Port

BA-200 400 WOG 150 WSP, Threaded, 1/4" Thru 4"

BA-250 400 WOG 150 WSP, Solder, 3/8" Thru 3"

Full Port

BA-475B * 600 WOG 150 WSP, Threaded, CSA/UL/FM/CGA Approved to 2", 1/4" Thru 4"

BA-485B * 600 WOG 150 WSP, Solder Heavy Pattern, 1/2" Thru 4"

2-PIECE BALL FORGED BRASS PRESS

Full Port

BA-480B * 200 PSIG @ 250 Degrees, Press X Press, 1/2" Thru 3"

BA-480S * 200 PSIG @ 250 Degrees, Press X Press, 1/2" Thru 3" with Stainless Steel Ball & Stem

BA-490S * 200 PSIG @ 250 Degrees, Press X Threaded, 1/2" Thru 2" with Stainless Steel Ball & Stem

BA-490B * 200 PSIG @ 250 Degrees, Press X Threaded, 1/2" Thru 2"

BA-480BH 200 PSIG @ 250 Degrees, Press X Hose, 1/2" Thru 3/4"

BA-481B 200 PSIG @ 250 Degrees, Press X Press, Extension Stem with memory stop 1/2" Thru 3"

BA-491B * 200 PSIG @ 250 Degrees, Press X Threaded, Extension Stem with memory stop, 1/2" Thru 2"

BRONZE BUTTERBALL® BUTTERFLY

BB2-100 175 PSI, Threaded, 1/4" Thru 2"

(1/2" Thru 2" UL/CSA)

BB2-350 175 PSI, Solder, 3/8" Thru 2"

BB1-10A0 175 PSI, Threaded, Actuator Mounting Pads, 3/4" Thru 2"

2-PIECE CIRCULATOR-FLANGE

BA-500 Brass Body, Threaded Ends, Full Port, 100 SWP 600 WOG, Sold in Pkg of 2, 3/4" Thru 1 1/4"

BA-550 Brass Body, Sweat Ends, Full Port, 100 SWP 600 WOG, Sold in Pkg of 2, 3/4" Thru 1 1/4"

* Available with **THE INSULATOR/MS (TIH)** Handle 1/4" -2"



BRONZE GATE VALVES



NON-RISING STEM Threaded End-Threaded Bonnet

105
125 PSI WSP-200 PSI WOG,
MSS SP-80, 1/4" Thru 4"
1140
150 PSI WSP-300 PSI WOG,
MSS SP-80, 1/4" Thru 4"

NON-RISING STEM Solder End-Threaded Bonnet

115
125 PSI WSP-200 PSI WOG,
MSS SP-80, 3/8" Thru 4"

NON-RISING STEM Threaded End-Union Bonnet

1141
150 PSI WSP-300 PSI WOG,
MSS SP-80, 1/4" Thru 2"
1176
200 PSI WSP-400 PSI WOG,
Stainless-Steel Seats, MSS SP-80,
1/4" Thru 2"
1186
300 PSI WSP-1000 PSI WOG,
Stainless-Steel Seats, MSS SP-80,
1/4" Thru 2"

RISING STEM Threaded End-Threaded Bonnet

148
125 WSP- 200 WOG, MSS SP-80,
1/4" Thru 4"
1150
150 WSP-300 WOG, MSS SP-80,
1/4" Thru 4"



RISING STEM Solder End-Threaded Bonnet

149
125 WSP-200 WOG, MSS SP-80,
3/8" Thru 4"

RISING STEM Solder End-Union Bonnet

1169
150 WSP-300 WOG, MSS SP-80,
3/8" Thru 3"

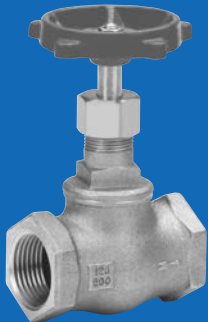
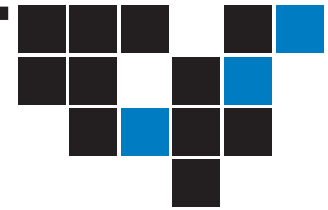
QUICK-OPENING GATE VALVES

Threaded Ends
900
150 WSP-300 WOG, Spring-Loaded
Handle, 1" Thru 3"
901
150 WSP-300 WOG, Quick-Open Lever
Handle, 1/2" Thru 4"
902
150 WOG O-Ring Stem Seal, Quick-Open
Lever With Springs,
3/4" And 1-1/4"

RISING STEM Threaded End-Union Bonnet

1152
125 WSP- 200 WOG, MSS SP-80,
1/4" Thru 3"
1151
150 WSP-300 WOG, MSS SP-80,
1/4" Thru 3"
1153
200 WSP-400 WOG, Bronze Seats,
MSS SP-80, 1/4" Thru 3"
1156
200 WSP-400 WOG, Cu-Ni Seat Ring,
MSS SP-80, 1/4" Thru 2"
1174
200 WSP-400 WOG,
Stainless-Steel Seat Ring, MSS SP-80,
1/4" Thru 3"
1182
300 WSP-1000 WOG, Cu-Ni Seat Ring,
MSS SP-80, 1/4" Thru 2"
1184
300 WSP-1000 WOG,
Stainless-Steel Seat Ring, MSS SP-80,
1/4" Thru 3"

BRONZE GLOBE & ANGLE VALVES



502

GLOBE THREADED BONNET

Threaded Ends

- 502**
125 WSP-200 WOG, MSS SP-80,
Bronze Disc, 1/8" Thru 3"
- 600**
200 WSP-400 WOG, MSS SP-80,
Needle Disc, 1/8" Thru 3/4"



1590T

GLOBE UNION BONNET

Solder Ends

- 1590T**
150 WSP-300 WOG, MSS SP-80,
PTFE Disc, 1/2" Thru 3"



570

GLOBE UNION BONNET

Threaded Ends

- 590T**
150 WSP-300 WOG, MSS SP-80,
PTFE Disc, 1/8" Thru 3"
- 591A**
150 WSP-300 WOG, MSS SP-80,
SS Seat & Disc, 1/4" Thru 2"
- 570**
200 WSP-400 WOG, MSS SP-80,
Bronze Disc, 1/8" Thru 3"
- 572**
300 WSP-1000 WOG, MSS SP-80,
Bronze Disc, 1/4" Thru 2"
- 592A**
200 WSP-400 WOG, MSS SP-80,
SS Seat & Disc, 1/4" Thru 2"
- 593A**
300 WSP-1000 WOG, MSS SP-80,
SS Seat & Disc, 1/4" Thru 2"



504

ANGLE THREADED BONNET

Threaded Ends

- 504**
125 WSP-200 WOG, MSS SP-80,
Bronze Disc, 1/4" Thru 2-1/2"



1502

GLOBE THREADED BONNET

Solder Ends

- 1502**
125 WSP-200 WOG, MSS SP-80,
Bronze Disc, 3/8" Thru 2"



582

ANGLE UNION BONNET

Threaded Ends

- 582**
300 WSP-600 WOG, MSS SP-80,
Bronze Disc, 1/4" Thru 2"
- 595T**
150 WSP-300 WOG, MSS SP-80,
PTFE Disc, 1/4" Thru 2"



CHECK & SPECIALTY VALVES



HORIZONTAL SWING CHECK

Threaded Ends, Bronze

- 509**
125 WSP-200 WOG, MSS SP-80, Bronze Disc, 1/4" Thru 3"
- 509T**
125 WSP-200 WOG, MSS SP-80, PTFE Disc, 1/4" Thru 2"
- 510T**
150 WSP-300 WOG, MSS SP-80, PTFE Disc, 1/4" Thru 2"
- 515**
150 WSP-300 WOG, MSS SP-80, Bronze Disc, 1/4" Thru 2"

HORIZONTAL SWING CHECK

Solder Ends, Bronze

- 1509**
125 WSP-200 WOG, MSS SP-80, Bronze Disc, 3/8" Thru 3"
 - 1509T**
125 WSP-200 WOG, MSS SP-80, PTFE Disc, 3/8" Thru 2"
 - 1510T**
150 WSP-300 WOG, MSS SP-80, PTFE Disc, 1/2" Thru 2"
- Also available w/ Bronze Disc

SPRING-LOADED LIFT CHECK

Threaded Ends, Bronze

- 548B**
250 WOG, MSS SP-80, BUNA Disc, 3/8" Thru 2"
- 548T**
250 WOG, MSS SP-80, PTFE Disc, 3/8" Thru 2"

SPRING-LOADED LIFT CHECK

Solder Ends, Bronze

- 1548T**
250 WOG, MSS SP-80, PTFE Disc, 3/8" Thru 2"
- 1548B**
250 WOG, MSS SP-80, BUNA Disc, 3/8" Thru 2"

HORIZONTAL SWING CHECK – Y PATTERN

Threaded Ends, Bronze

- 507**
300 WSP-600 WOG, MSS SP-80, Bronze Disc, 1/4" Thru 3"
- 508**
200 WSP-400 WOG, MSS SP-80, Bronze Disc, 1/4" Thru 3"
- 509Y**
125 WSP-200 WOG, MSS SP-80, Bronze Disc, Y pattern, 1/4" Thru 3",
- 515Y**
150 WSP-300 WOG, MSS SP-80, Bronze Disc, Y pattern, 1/4" Thru 3",

BRASS PRESS CHECK

969 200 PSIG @ 250 Degrees, Brass Disc, Integral Seat, Press x Press 1/2" Thru 2"

ULTRA PURE VALVES

*FOR POTABLE WATER SERVICE



UPBA100



UPBA150S



UPBA475B



UPBA350

2-PIECE BRONZE BALL VALVE

Standard Port

UPBA100 **

600 WOG, MSS SP-110, Threaded, 1/4" Thru 3"

UPBA100S **

600 WOG, MSS SP-110, Stainless Steel Ball & Stem, Threaded, 1/4" Thru 3"

UPBA100H **

600 WOG, Threaded with Hose, Cap and Chain 1/2" and 3/4"

UPBA150 **

600 WOG, MSS SP-110, Solder, 1/2" Thru 3"

UPBA150S **

600 WOG, MSS SP-110, Stainless Steel Ball & Stem, Solder, 1/2" Thru 3"

UPBA150H **

600 WOG, Solder with Hose, Cap and Chain 1/2" Thru 3/4"

Full Port

UPBA400 **

600 WOG, MSS SP-110, Threaded, 1/4" Thru 2"

UPBA400S **

600 WOG, MSS SP-110, Stainless Steel Ball & Stem, 1/4" Thru 2"

UPBA450 **

600 WOG, MSS SP-110, Solder, 1/2" Thru 2"

UPBA450S **

600 WOG, MSS SP-110, Stainless Steel Ball & Stem, Solder, 1/2" Thru 2"

2-PIECE FORGED BRASS BALL VALVE

UPBA475B **

600 WOG, MSS SP-110, UL/CSA Rated to 2", Threaded, 1/4" Thru 3"

UPBA485B **

600 WOG, MSS SP-110, Solder, 1/2" Thru 3"

3-PIECE FORGED BRONZE BALL VALVE

Full Port**

UPBA300

600 WOG, MSS SP-110, Threaded, 1/4" Thru 2"

UPBA300S

600 WOG, MSS SP-110, Stainless Steel Ball & Stem, Threaded, 1/4" Thru 2"

UPBA350

600 WOG, MSS SP-110, Solder, 1/2" Thru 2"

UPBA350S

600 WOG, MSS SP-110, Stainless Steel Ball & Stem, Solder, 1/2" Thru 2"

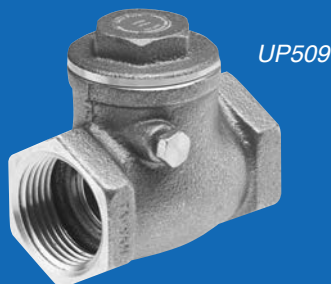
** Available with **THE INSULATOR/MS** (TIH) Handle 1/4" -2"

* Meets Senate law S3874. WQA tested and Certified against NSF/ANSI 372 for "lead -free" compliance.



ULTRA PURE VALVES

*FOR POTABLE WATER SERVICE



BRONZE GATE VALVE

Non-Rising Stem, Threaded Bonnet

UP105

Threaded, 300 WOG, MSS SP-80, 1/4" Thru 2"

UP115

Solder, 300 WOG, MSS SP-80, 1/2" Thru 2"

Rising Stem, Threaded Bonnet

UP148

Threaded, 300 WOG, MSS SP-80, 1/4" Thru 2"

UP149

Solder, 300 WOG, MSS SP-80, 1/2" Thru 2"

BRASS GATE VALVE

Non-Rising Stem, Threaded Bonnet

UP667

Threaded, 200 WOG, 1/4" Thru 2"

UP668

Solder, 200 WOG, 1/2" Thru 2"

BRONZE GLOBE VALVE

Threaded Bonnet, Bronze Disc

UP502

Threaded, 300 WOG, MSS SP-80, 1/4" Thru 2"

UP1502

Solder, 300 WOG, MSS SP-80, 1/2" Thru 2"

BRONZE CHECK VALVE

Horizontal Swing Check

UP509

Brass Disc, Threaded Ends, 300 WOG, MSS SP-80, 1/4" Thru 2"

UP1509

Brass Disc, Solder Ends, 300 WOG, MSS SP-80, 1/2" Thru 2"

Spring Load Lift Check

UP548T

PTFE Disc, Threaded Ends, 250 WOG, MSS SP-80, 1/4" Thru 2"

UP1548T

PTFE Disc, Solder Ends, 250 WOG, MSS SP-80, 1/2" Thru 2"

BRASS CHECK VALVE

Swing Check

UP967

Brass Disc, Threaded Ends, 200 WOG, 1/4" Thru 2"

UP968

Brass Disc, Solder Ends, 200 WOG, 1/2" Thru 2"

UP969

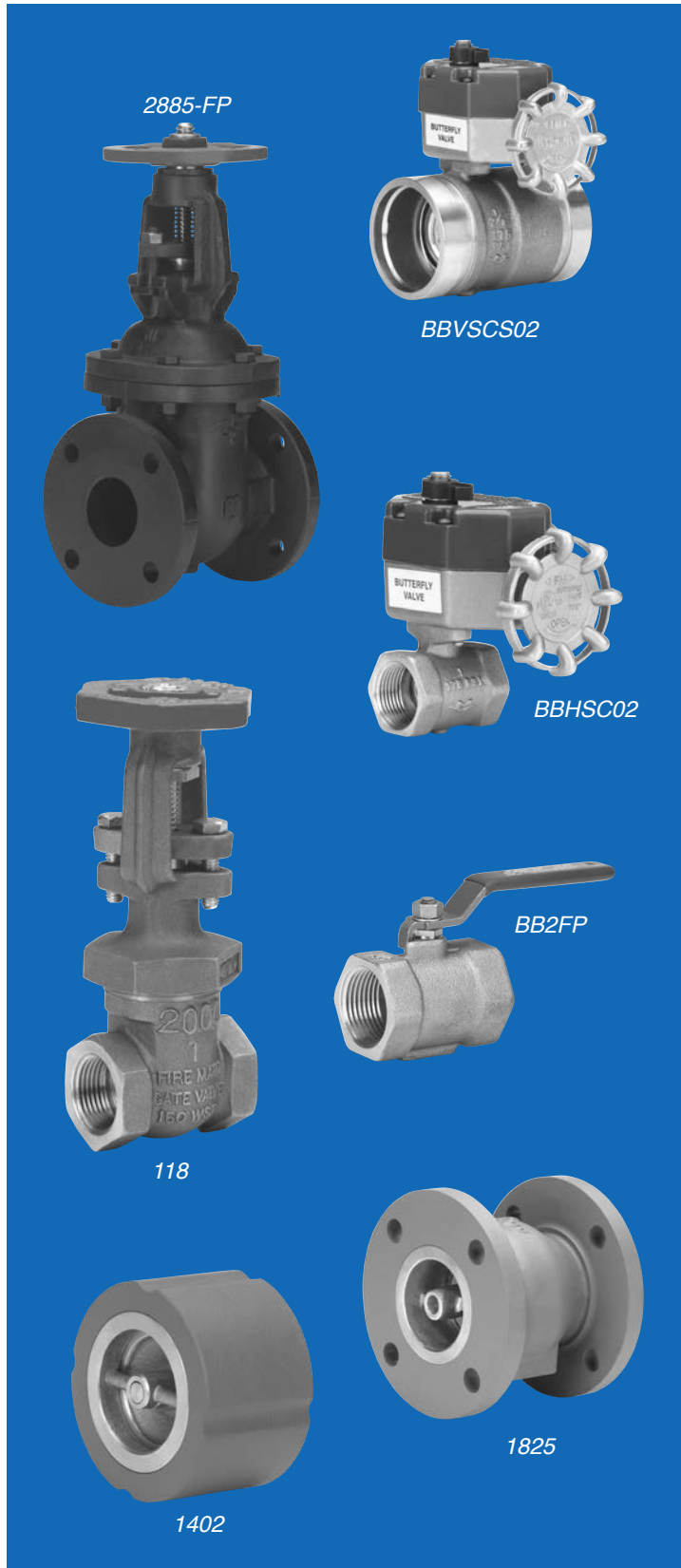
Brass Disc, Press x Press Ends, 200 PSIG@250 Degrees, 1/2" Thru 2"

BUTTERFLY

ML133E/233E/333E

Cast Iron Body, Aluminum Bronze Disc, EPDM Liner, 2" Thru 12"

FIRE PROTECTION VALVES



SLOW-CLOSE SPRINKLER-CONTROL VALVE INDOOR/OUTDOOR

BB-SC100

175 PSI, Threaded Ends, UL/FM, Slow-Close w/Position Indicator, Less Tamper Switch, 1" Thru 2-1/2"

BB-SCS02

175 PSI, Threaded Ends, UL/FM, Slow-Close w/Position Indicator, With Tamper Switch, 1" Thru 2-1/2" Indoor/Outdoor

BBVSC100

175 PSI, Grooved End, UL/FM, Slow-Close w/Position Indicator, Less Tamper Switch, 2" And 2-1/2"

BBVSCS02

175 PSI, Grooved End, UL/FM, Slow-Close w/Position Indicator, With Tamper Switch, 2" And 2-1/2" Indoor/Outdoor

IRON GATE

2885-FP

Gate Valve, OS & Y Bronze Trim, 175 WWP UL/FM, 2-1/2" Thru 8"

HIGH-RISE SPRINKLER-CONTROL VALVE

BBHSC100

350 PSI, Threaded Ends, Less Tamper Switch, 1" Thru 2-1/2"

BBHSC02

350 PSI, Threaded Ends, With Tamper Switch, 1" Thru 2-1/2"

BVHSC100

350 PSI, Grooved Ends, Less Tamper Switch, 2" And 2-1/2"

BVHSCS02

350 PSI, Grooved Ends, With Tamper Switch, 2" And 2-1/2"

BUTTERBALL TRIM VALVES UL/FM

BB2FP

175 PSI, Quarter Turn, NPT Threaded Ends, UL-Listed, FM-Approved, 1/2" Thru 2"

BRONZE GATE VALVE WITH UL/FM TRIM

118

Bronze Gate Valve, OS & Y, NPT Threaded, UL/FM, 1" Thru 2"

IRON CHECK VALVE

2974-FP

Check Valve, Cast Iron, 175 UL/FM, Rubber Disc, 3" Thru 10"

SILENT CHECK

1400

Silent Check, Class 125, Wafer Style Cast Iron Body, Available With Stainless On Stainless Steel Disc, SS Spring, 2" Thru 10"

1800

Silent Check, Class 125, Globe Style Cast Iron Body, Available With Stainless On Stainless Steel Disc, SS Spring, 2-1/2" Thru 24"

8800

Silent Check, Wafer, Stainless Steel Discs & Springs, Iron Body

This condensed catalog is not a complete depiction of Milwaukee Valve's products or capabilities. Please contact the factory for special service conditions or additional accessories and options.



COMPREHENSIVE DESIGN CAPABILITIES FOR SPECIALTY VALVES

TANK AND TRAILER/ SAMPLER VALVES

Hose Nozzle

P-202

Bronze, Overwing Aircraft Refueling, Tank Trucks, Bronze Internal Parts, 2 Stage Fulcrum Lever, Balanced Dashpot Control, Dual Disk, Less Strainer, Cap, and Cable, 1 1/2", 2", 2 1/2" x 2"

P-2056

Aluminum, Aircraft Refueling, Cushion Close, Tank Trucks, 135 GPM 25 psi Inlet Nozzle Pressure, Aluminum & Stainless Internal Parts, Conforms to MIL-N-87963 Type MD-3, 2"

Butterfly

P-2855E

Aluminum, EPDM Liner, Tank Trucks, Bulk Plants, Dry Bulk Plants, 90° Arc, Quick Open, 2" Thru 6" Available with Ductile Iron or Stainless Disc

P-2855H

Aluminum, Hydrin Liner, Tank Trucks, Bulk Plants, Dry Bulk Plants, 90° Arc, Quick Open, 2" Thru 6" Available with Ductile Iron or Stainless Disc

P-2860X

Aluminum, Tank Trucks, Bulk Plants, Dry Bulk Plants, 90° Arc, Quick Open, High Abrasion Seat for Dry Bulk Applications to 200° F, 2" Thru 4"

P-2860H

Aluminum, Tank Trucks, Bulk Plants, Dry Bulk Plants, 90° Arc, Quick Open, Hydrin Liner for Air Lines and a Wide Variety of Chemicals to 300° F, Discs are Stainless Steel, 2" Thru 4"

Gate

C-35551

Aluminum, Bronze Trim, Tank Trucks, Bulk Plants, Filling Stations, Rising Stem, Double Disc, Bolted Bonnet, Round Flange Ends, 3" Thru 6"

P-2699RF

Aluminum, Transport Tank, Bulk Plants, Filling Stations, Rising Stem, Split Wedge Disc, Bolted Bonnet, Round Flange Ends, 4"

P-2671

Bronze, Tank Trucks, Bulk Plants, Filling Stations, Rising Stem, Double Disc, Threaded Bonnet, Flange Ends, 2"

P-900

Bronze, Quick Opening, Hazardous Liquid, 150lb WOG, Lever Operated, Double Disc, Gland Packed, 1" Thru 3"

P-901

Bronze, Quick Opening, Double Disc, Gland Packed, 150 lb SWP, 300 lb WOG, Lever Operated, 1/2" Thru 4"

P-902

Bronze, Quick Opening, Tank Trucks, Bulk Plants, 150 lb WOG, Lever Operated, Double Disc, O-Ring Stem Packed, 3/4" and 1 1/4"

Check

P-509

Bronze, Horizontal Swing, Tank, Dry Bulk Trucks, Bronze Disc, Threaded Cap, Threaded Ends, 1/4" Thru 3"

P-509S

Bronze, Horizontal Swing, Tank, Dry Bulk Trucks, Composition Disc, Threaded Cap, Threaded Ends, 1/4" Thru 2"

P-2519A

Swing Check, Aluminum, Dry Bulk Transports, Tank Truck, Aluminum Disc with Viton Seat, 150 WOG, 3"

P-717F

Angle Lift Check, Aluminum, 125 psi WOG at 100° F, 25 psi WOG at 350° F, Square Bolted Cap, Square Flange, Viton Disc, 2 1/2"

P-717S

Angle Check, Bronze, 125 psi WOG at 100° F, 25 psi WOG at 350° F, Threaded Cap, Viton Disc, Threaded Ends, 2"

P-728

Lift Check, Aluminum, Dry Bulk Transports, Tank Trucks, 125 psi WOG at 100° F, 25 psi at 350° F, Spring Loaded, Viton Disc, Threaded Ends, 3"

P-729

Lift Check, Aluminum, Dry Bulk Transports, Tank Trucks, 125 psi WOG at 100° F, 25 psi at 350° F, Spring Loaded, Viton Disc, Flanged Ends, 3"

Relief

P-612A

Aluminum, Bulk Tank Truck, Pneumatic Conveyor Systems, Railroad Dry Bulk Tanks, NPT Threaded Inlet, 2" Settings from 6 psi to 30 psi

Transformer/Sampler Valve

Globe Sampler Valves

505-202

Bronze body, 200 lb WOG, Teflon Disc, threaded ends, 1", 1 1/2", 2"
Complete with 3/8" Sampling Device

506-202

Bronze body, offset flange inlet, threaded outlet, Teflon Disc, 300 WOG 1" and 2"
Complete with 3/8" Sampling Device

Globe Valve

505-001

Bronze body, 200 lb WOG, threaded ends, teflon disc, 1/2", 3/4", 1", 1 1/2", 2"

Gate Valve

P-2641

Bronze body, 300 lb WOG, flanged ends, solid wedge, screwed bonnet, non-rising stem with gland packing, 2" Also available with 3/8" Sampling Device P2641B3



MILWAUKEE VALVE PRODUCTS



Products available from Milwaukee Valve:

- Iron Lug-Body and Wafer-Body Butterfly Valves
- Unibody Industrial Ball Valves
- 2-Piece Industrial Ball Valves
- Seal-Welded Industrial Ball Valves
- 3-Piece Industrial Ball Valves
- Cast Steel Gate, Globe and Check Valves
- CS/SS High Performance Butterfly
- Iron Gate, Globe, Check and Clip-Gate Valves
- Silent Check Valves
- 2-Piece Commercial Ball Valves
- 3-Piece Commercial Ball Valves
- Butterball® Butterfly Valves
- Bronze Gate, Globe, Angle, Check and Specialty Valves
- Fire Protection Valves
- Actuation and Controls for Process Automation
- Tank and Trailer
- Transformer
- UltraPure® (low lead valves)
- UltraPress® (press valves)

Valves built to take it...since 1901

Milwaukee Valve Company

BUTTERBALL, UltraPure, UltraPress and the Milwaukee Valve Logo are registered trademarks of Milwaukee Valve Company.
© Milwaukee Valve Company, August 2007



MILWAUKEE VALVE