

HUMAN HEALTH

ENVIRONMENTAL HEALTH



DO MORE AND
DO IT WITH
CONFIDENCE



Empower® 3 Chromatography Data Software


PerkinElmer[®]
For the Better



**MORE THAN 350,000
USERS CAN'T BE WRONG**



EXPECT MORE FROM YOUR CDS AND GET IT

Waters® Empower® 3 software is the most widely used chromatography data software (CDS) in the industry – the proven, go-to platform for more than 350,000 users around the world. And with good reason: It meets all your lab's requirements for data integrity, repeatability, and accurate reporting. And it easily scales with your lab – from a single workstation to an enterprise deployment.

Empower® 3 software is all about making it simpler and easier to run your samples and achieve meaningful, precise results, time after time. And that means ensuring that all your people have all the tools they need to be productive. With no downtime for training, retooling software workflows, or adding new instruments or applications.

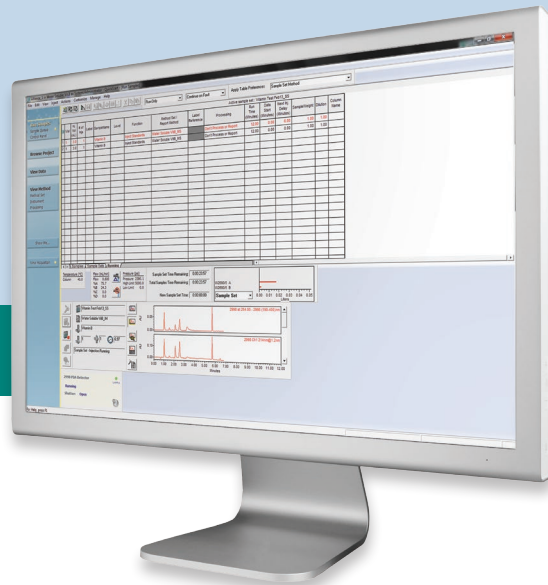
The Empower® 3 CDS user interface increases productivity by better enabling you to collect, process, and review your lab's data – and keeps that data accessible, and traceable, in a centralized database.

Plus, with Empower® 3 software, you get customizable reports, state-of-the-art data management, and expert online help that can keep the time and expense of training to a minimum. And it has all the features you need to be fully regulatory compliant, including 21 CFR Part 11 controls for industry-leading security and data integrity.

And best of all, it's backed by the premiere service and support organization in the business, hands down.

Empower® 3 CDS. Expect more from your multivendor, multitechnique chromatography data software? So do we.

ONE SOFTWARE SOLUTION FOR ALL YOUR CHALLENGES

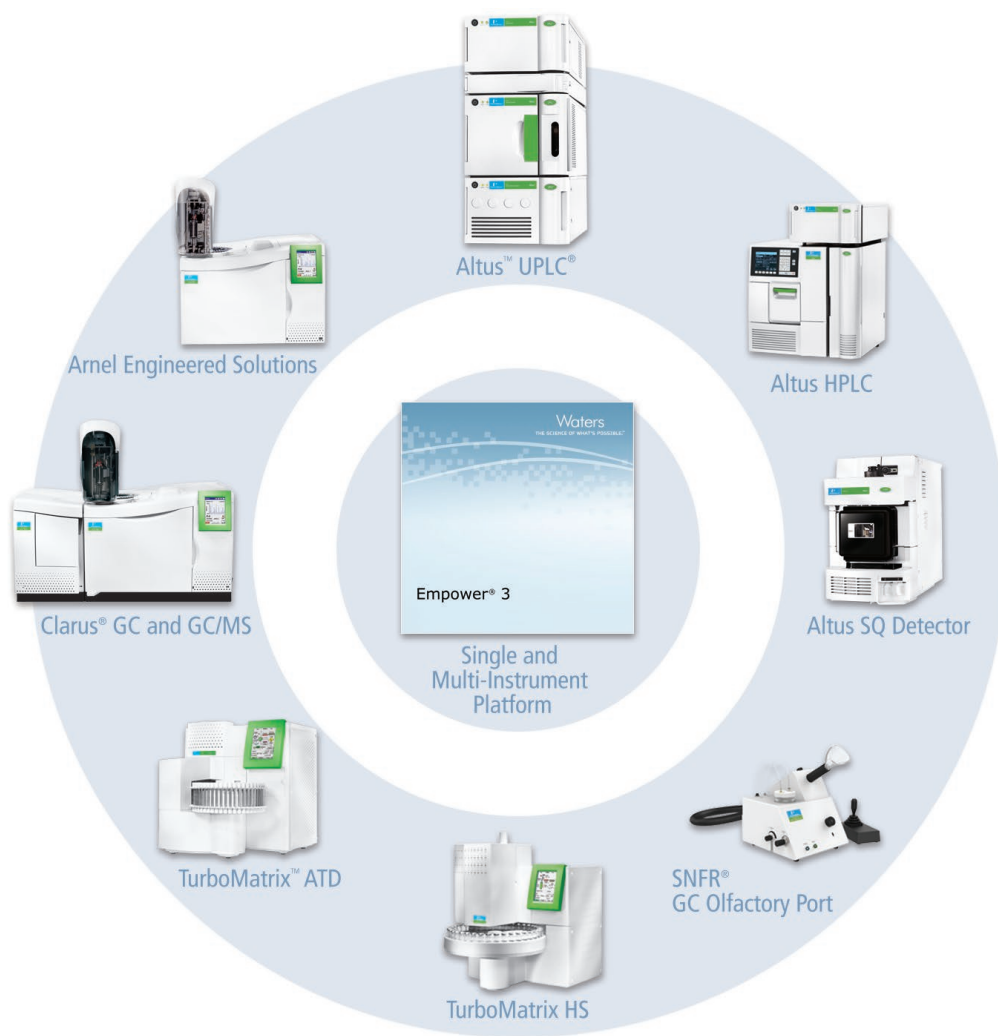


Integrate your lab with complete confidence

If your lab is like most, you're running a wide variety of separation techniques – LC, GC, IC, CE, MS, and more – from an even wider number of vendors. And the challenge is not just the cost and complexity of multivendor training on multiple platforms: There are issues of operational efficiencies and data integrity, of repeatability and reporting, and of compliance and traceability to contend with.

If ever a situation called out for integration, it's this one. And the solution is simple: Empower® 3 software.

The Empower® 3 CDS is a unified, multivendor software solution that can integrate the chromatography techniques in your lab. It brings together your raw data, your metadata, and your test results under one umbrella for more repeatable data processing and comprehensive reporting. It even brings your disparate users together, too, with customizable interfaces tailored to specific tasks and skill levels. Plus, audit traceability is built right in, for more confidence in your results – and a lot less risk.



Everyone can customize to meet their needs

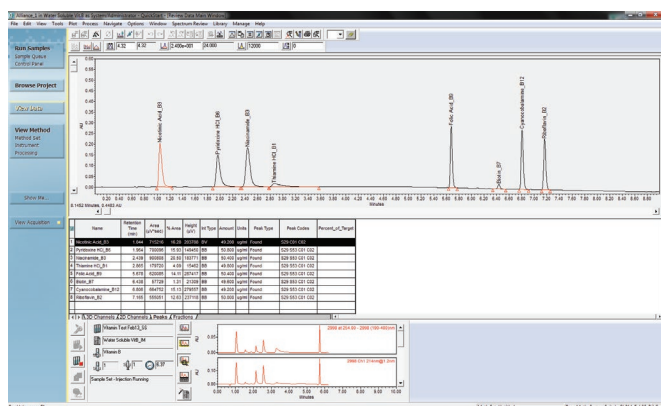
With the Empower® 3 CDS, you get all the functionality you need from your software – with no add-ons or afterthoughts to gain more functionality. It comes with one-of-a-kind interface options tailored to every user in your lab – from novices to chromatography experts. The result? A fully customized user experience that delivers productivity at a whole new level.

Workflow-driven, user-centric QuickStart™ interface

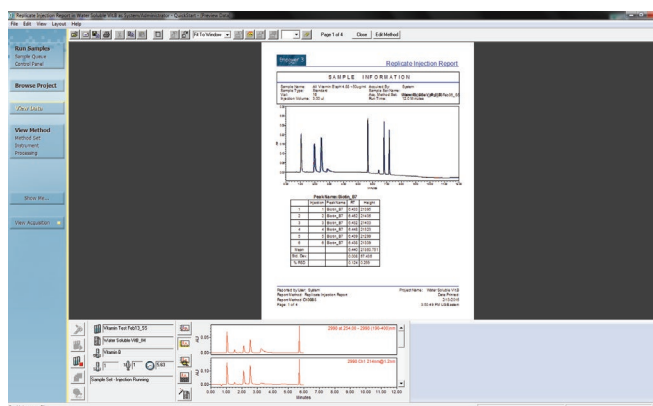
The single-window Empower® 3 QuickStart™ interface allows all your users to perform tasks that match their skill level, with no confusion. You can develop new methods, including PDA and MS data extraction, customize reports, manage data, and receive results and notifications by email.

The QuickStart™ interface streamlines the collection, processing, reviewing, and reporting of chromatographic results. Capabilities provided through the interface include:

- Instrument acquisition
- Peak detection (including the ApexTrack™ Peak Detection algorithm for consistent results)
- Quantitation
- GPC processing and calculations
- Data review
- Searching for data
- Mass spectrometry
- Custom reporting



Intuitive data-review workflow enables even beginner users to quickly confirm or modify integrations quickly.



Quickly and easily review custom reports during data acquisition.

Empower® 3 software handles it all – even mass spec

Empower® 3 software enables you to manage data generated by all your instrumentation, plus run different detection techniques and applications, method development and validation, integrated chemical structures, and polymer analysis.

The software control also extends to MS systems, specifically our LC and GC single-quadrupole mass detectors. So you benefit from greater specificity in your analyses and can easily use mass detection even in a routine lab environment. You no longer have to outsource your MS analyses or be forced to use another software package to collect and process MS data.



TO MAXIMIZE YOUR LAB'S
EFFICIENCY,
START BY MINIMIZING
ITS RISK

Data is most valuable when it's traceable

In every industry, trustworthy, reliable electronic records are a must. Empower® 3 software offers configurable data-integrity features that safeguard your information and ensure its validity. You can incorporate time-and-date stamps, automated audit trails, and electronic signatures and approvals. Empower® 3 software allows you to quickly and easily search your data based on any criteria you define – meaning you can make decisions faster than ever before.

In addition, Empower® 3 software contains functionality that eliminates the need for add-on software packages to process your data.

Ensuring the safety and integrity of your valuable data

Complying with all the stringent regulatory compliance and security issues is a critical challenge for your lab. And Empower® 3 software brings the entire regulatory compliance process within your control.

The software ensures that you'll be able to meet whatever level of compliance or regulation is needed by enabling you to assign access privileges, manage passwords and inactivity logouts, establish audit trails, distribute new projects, and more. Plus, Empower® 3 software ensures the highest levels of integrity and security for all your critical information.

The perfect software to grow with you

Protecting your data and making it available is critical for businesses of any size. Rapid deployment, exceptional performance, data security, scalability and availability, and of course disaster recovery – these features and more, are what organizations are looking for in a software solution.

Based on your laboratory needs, the Empower® 3 Enterprise solution allows you to connect to the software from anywhere in your corporate network, whether it's to set up and perform chromatography analyses, or to process and report data. This prevents keyboard bottleneck and gives users the flexibility to work in their write up areas, rather than in the laboratory.

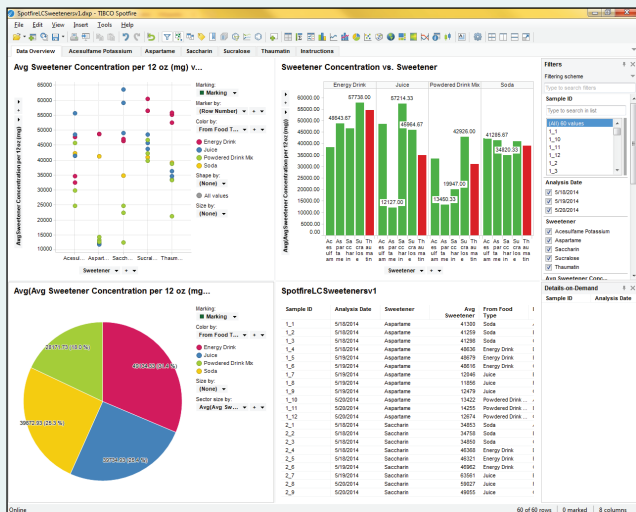
What's more, Empower® 3 Enterprise software is designed from the ground up to address both data security and uninterrupted access for your analysts, enabling you to take advantage of various automated disaster recovery and 'high availability' configurations when deploying in a network. This keeps your data safe and allows your laboratory to keep working in case of system or software failure.

Greater insights with fast, smart analytics

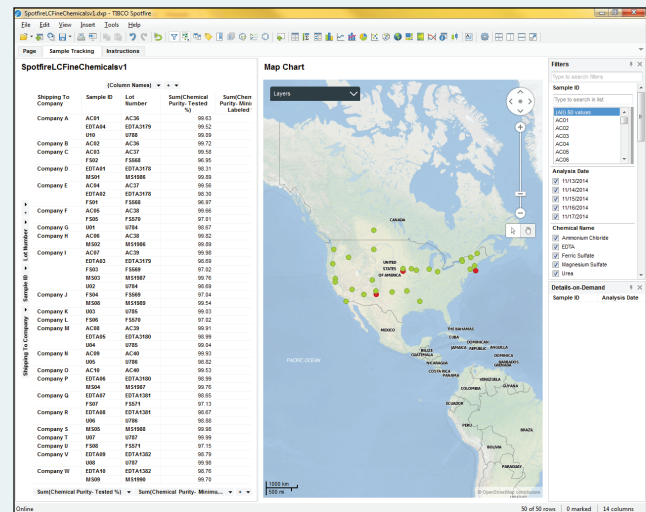
Our exclusive TIBCO Spotfire® software creates enhanced data visualizations from a single instrument or a series of instruments quickly and efficiently, getting you answers faster than ever before.

Now fully integrated with Empower® 3 software, TIBCO Spotfire® takes the data from the instrument and imports it – it's automatically visualized using prebuilt dashboards, depending on the application, or on your own from-scratch dashboards.

Through easy operation and clear visual results, TIBCO Spotfire® for both LC and GC provides greater insights and optimal laboratory efficiency, increasing throughput and streamlining your data analysis process.



Dashboard results summarizing sweetener type and concentration in beverage samples.



Tracking raw material quality vs. origin visually to quickly identify issues and accelerate decisions.



Everything you need under one roof

When you engage with us, you're benefiting from multivendor service and support from the absolute best in the business. Thousands of certified technicians in the field, who are familiar with all the techniques you employ. More than 400,000 multivendor assets under our care. And operations in more than 120 countries across the globe.

Analytic method services, asset procurement and disposition, business intelligence, qualification and validation, lab relocation, and, of course, instrument service and repair – all these services and more, plus a deep-seated knowledge of the business requirements of our customers, uniquely qualify us to help empower your science and drive your business.

Want more from your LC/GC solutions? You're in good company.

PerkinElmer, Inc.
940 Winter Street
Waltham, MA 02451 USA
P: (800) 762-4000 or
(+1) 203-925-4602
www.perkinelmer.com



For a complete listing of our global offices, visit www.perkinelmer.com/ContactUs

Copyright ©2015, PerkinElmer, Inc. All rights reserved. PerkinElmer® is a registered trademark of PerkinElmer, Inc. All other trademarks are the property of their respective owners.