



# DOMES HOMES OF FLORIDA

## Who are we?

We are a Central Florida based company (sub-contractor) dedicated to constructing the most **disaster resistant** and **energy efficient** homes in the world.

## Why do we exist?

Many homes are weak against high winds (i.e. hurricanes) and require more energy than necessary to heat/cool. We want to offer homeowners a solution to these problems in a modern, attractive design.

## THE TEAM



Mickey Lukens Sr.

- Designer & Builder
- Nationally Recognized
- 35yrs Experience



Mickey Lukens Jr.

- Operations
- Marketing
- Prev. at Microsoft, Wyndham, Perrier

### DOMES HOMES OF FLORIDA

# WHY US?

Stronger

Cost  
Effective

Energy  
Efficient

We have **35+ years experience** building geodesic dome homes throughout the United States.

Our Central Florida domes have withstood multiple hurricanes with virtually **zero structural damage**.

For one of our domes, monthly energy costs are **30% lower** than the average Florida energy bill (According to data from the U.S. Energy Information Administration).

---

## ⬡ How much is it?

Our prices are consistent with the average square foot building price in your area. In other words, it usually costs the same per square foot to construct our dome as it would to build a traditional home in your area.

## ⬡ What is it made of?

Our domes are made of two bys and plywood, just like the roof in a conventional house. However, we make tringles instead of trusses. Depending on your area code's R factor, that determines the thickness of the dome shell (2x4, 2x6, 2x8s ect...).

## ⬡ How many have you built? Where?

We have build over 30 dome shells in our career. Cities in which we've built include Tampa (Lithia Pinecrest and Leigh High Acres) Bradenton, FL, Lake Placid, and Bradenton to name a few.

# THE PROCESS

## STEP 1

### Initial conversation & answering questions

- Visit our property to see in person a complete dome.
- Allows us to talk through in detail your desired home features and answer any final questions.

## STEP 2

### Deposit received, begin drafting plans

- Once we receive your deposit we begin drafting your house plans.
- Plans are sent to you for review & approval (revisions as needed).
- Once finalized, these plans will be sent to an architect/engineer for approval.

## STEP 3

### Plans approved, down payment received, manufacturing begins

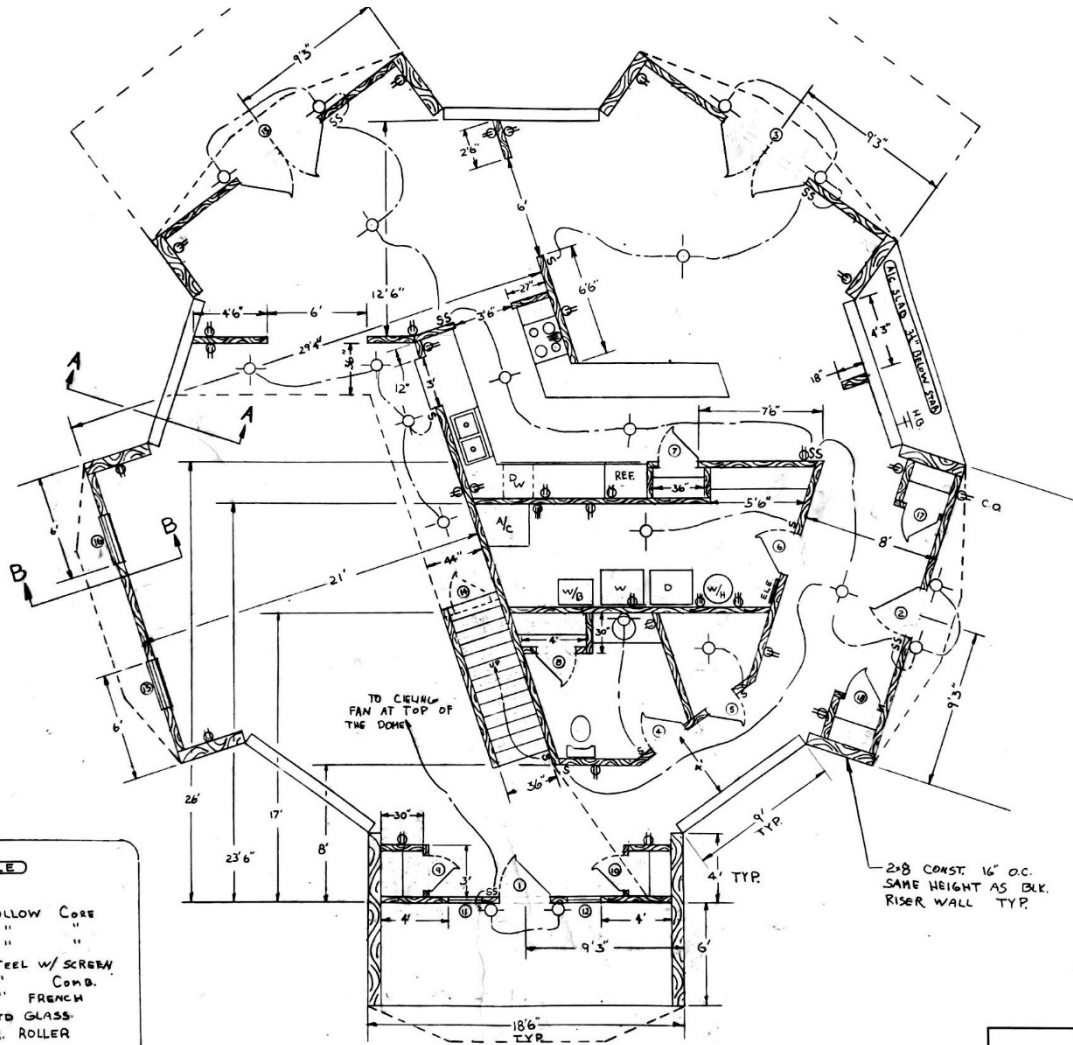
- Once plans are approved, the blueprints are distributed to all necessary sub-contractors.
  - Our fee includes any consulting/additional instruction to all sub-contractors for the duration of the project.
- Once we receive down payment, we begin manufacturing the triangles.
  - This is the longest step in the process as other sub-contractors must complete their jobs before we can begin erecting the dome shell.

## STEP 4

### Construction

- Final payment received.
- Shipping of triangles to the build site
- Our team fully constructs the dome shell on site (dried in).

# SAMPLE IMAGES

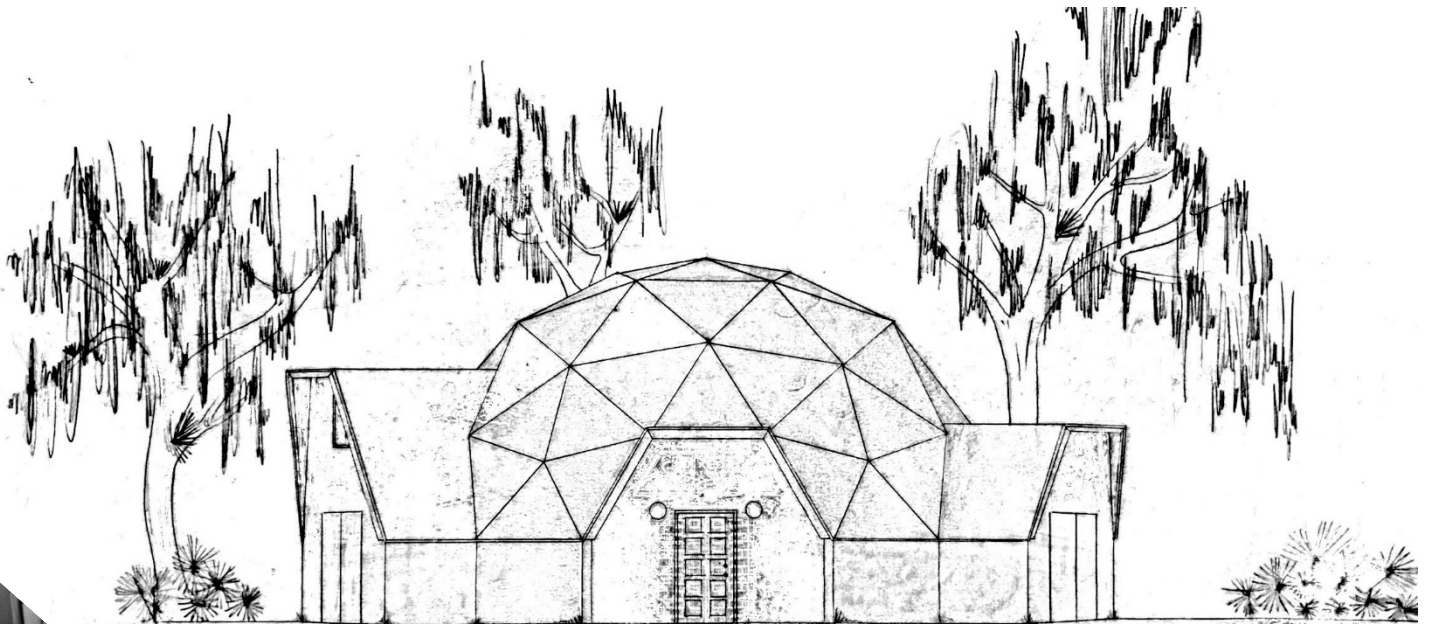


**SCHEDULE**

①②③④⑤	2'0"	HOLLOW CORE
⑥⑦⑧⑨	2'4"	"
⑩	2'6"	"
⑪	3'0"	STEEL W/ SCREW
⑫	2'8"	" COMB.
⑬⑭	6'0"	" FRENCH
⑮⑯	2'x6'	FIXED GLASS
⑰⑱	3040	HOR. ROLLER

FIRST FLOOR PLAN  
45' DIAMETER

SCALE	REVISIONS	BY
DATE		
DRW. NO.		
DATE		
TITLE		





# SAMPLE IMAGES

