

**Cast Iron Receivers:**

For years of dependable service; warranted for 20 years from date of shipment against failure due to corrosion. Each Receiver comes standard with Inlet connection, an overflow and minimum 2" NPT air vent connection.

**Series B-35 Pumps:**

The original low NPSH pump; two stage bronze construction. Standard 3500 rpm for best hydraulic efficiencies. Mechanical seals rated for 250°F (121°C)

**Float Switches:**

Durable pole heavy duty, externally adjustable

**CB Units:**

- Floor mounted for low return lines
- Pumps condensate up to 210°F (99°C) at sea level

**CBE Units:**

- Receiver is elevated 24" (610mm) above the floor to provide the required 2 ft. NPSHA
- Pumps condensate up to 212°F (100°C) at sea level

**Series CB****Series CBE**

# Domestic® Pump Series CB and CBE Condensate Units

SINGLE OR DUPLEX

1,000 THRU 140,000 SQ. FT. EDR-250 THRU 34,748 LB./HR.

**Bell & Gossett**

a xylem brand

# SELECTION DATA

ALL PUMPS ARE 3500 RPM

SYSTEM CAPACITY*	PUMP CAPACITY GPM (L/M)	DISCHARGE PRESSURE PSIG (kPa)	MOTOR HORSEPOWER 3500 RPM	DISCHARGE SIZE IN. (mm)	SERIES CB MODEL NO.	CB REC. CAP. GPM (L)	CB INLET SIZE IN. (mm)	SERIES CBE MODEL NO.	CBE REC. CAP. GAL (L)	CBE INLET SIZES IN. (mm)
1,000 to 9,000 Sq. Ft. EDR 250 thru 2,250 lb./hr. (113-1,021 kg/hr)	9 (34)	10-15 (69-103) 20 (138) 25 (172) 30 (207) 40 (276) 50 (345) 60 (414) 75 (518) 85 (587) 100 (690)	1/3 1/3 1/2 3/4 1 1/2 1 1/2 3 3 5 5 5	1 1/2 (38)	23CB9-15 23CB9-20 23CB9-25 23CB9-30 23CB9-40 23CB9-50 23CB9-60 23CB9-75 23CB9-85 23CB9-100	23 (87)	2 (51)	23CBE9-15 23CBE9-20 23CBE9-25 23CBE9-30 23CBE9-40 23CBE9-50 23CBE9-60 23CBE9-75 23CBE9-85 23CBE9-100	23 (87)	2 (51)
12,000 Sq. Ft. EDR 3,000 lb./hr. (1,361 kg/hr)	12 (45)	10-15 (69-103) 20 (138) 25 (172) 30 (207) 40 (276) 50 (345) 60 (414) 75 (518) 85 (587) 100 (690)	1/3 1/3 1/2 3/4 1 1/2 2 3 5 5 5	1 1/2 (38)	23CB12-15 23CB12-20 23CB12-25 23CB12-30 23CB12-40 23CB12-50 23CB12-60 23CB12-75 23CB12-85 23CB12-100	23 (87)	2 (51)	23CBE12-15 23CBE12-20 23CBE12-25 23CBE12-30 23CBE12-40 23CBE12-50 23CBE12-60 23CBE12-75 23CBE12-85 23CBE12-100	23 (87)	2 (51)
15,000 Sq. Ft. EDR 3,750 lb./hr. (1,701 kg/hr)	15 (56)	10-15 (69-103) 20 (138) 25 (172) 30 (207) 40 (276) 50 (345) 60 (414) 75 (518) 85 (587) 100 (690)	1/3 1/2 3/4 3/4 1 1/2 2 3 5 5 5	1 1/2 (38)	23CB15-15 23CB15-20 23CB15-25 23CB15-30 23CB15-40 23CB15-50 23CB15-60 23CB15-75 23CB15-85 23CB15-100	23 (87)	2 (51)	23CBE15-15 23CBE15-20 23CBE15-25 23CBE15-30 23CBE15-40 23CBE15-50 23CBE15-60 23CBE15-75 23CBE15-85 23CBE15-100	23 (87)	2 (51)
22,000 Sq. Ft. EDR 5,500 lb./hr. (2,495 kg/hr)	22 (83)	10-15 (69-103) 20 (138) 25 (172) 30 (207) 40 (276) 50 (345) 60 (414) 75 (518) 85 (587) 100 (690)	1/2 1/2 3/4 3/4 1 1/2 2 3 5 5 5	1 1/2 (38)	23CB22-15 23CB22-20 23CB22-25 23CB22-30 23CB22-40 23CB22-50 23CB22-60 23CB22-75 23CB22-85 23CB22-100	23 (87)	2 (51)	23CBE22-15 23CBE22-20 23CBE22-25 23CBE22-30 23CBE22-40 23CBE22-50 23CBE22-60 23CBE22-75 23CBE22-85 23CBE22-100	23 (87)	2 (51)
30,000 Sq. Ft. EDR 7,500 lb./hr. (3,402 kg/hr)	30 (114)	10-15 (69-103) 20 (138) 25 (172) 30 (207) 40 (276) 50 (345) 60 (414) 75 (518) 85 (587) 100 (690)	1/2 3/4 3/4 1 2 3 3 5 5 7 1/2	1 1/2 (38)	36CB30-15 36CB30-20 36CB30-25 36CB30-30 36CB30-40 36CB30-50 36CB30-60 36CB30-75 36CB30-85 36CB30-100	36 (136)	3 (76)	36CBE30-15 36CBE30-20 36CBE30-25 36CBE30-30 36CBE30-40 36CBE30-50 36CBE30-60 36CBE30-75 36CBE30-85 36CBE30-100	36 (136)	3 (76)
37,000 Sq. Ft. EDR 9,250 lb./hr. (4,196 kg/hr)	37 (140)	10-15 (69-103) 20 (138) 25 (172) 30 (207) 40 (276) 50 (345) 60 (414) 75 (518) 85 (587) 100 (690)	1/2 3/4 1 1 3 3 5 5 5 7 1/2	1 1/2 (38)	36CB37-15 36CB37-20 36CB37-25 36CB37-30 36CB37-40 36CB37-50 36CB37-60 36CB37-75 36CB37-85 36CB37-100	36 (136)	3 (76)	36CBE37-15 36CBE37-20 36CBE37-25 36CBE37-30 36CBE37-40 36CBE37-50 36CBE37-60 36CBE37-75 36CBE37-85 36CBE37-100	36 (136)	3 (76)
45,000 Sq. Ft. EDR 11,250 lb./hr. (5,130 kg/hr)	45 (170)	10-15 (69-103) 20 (138) 25 (172) 30 (207) 40 (276) 50 (345) 60 (414) 75 (518) 85 (587) 100 (690)	3/4 3/4 1 1 1/2 3 3 5 5 7 1/2 7 1/2	1 1/2 (38)	52CB45-15 52CB45-20 52CB45-25 52CB45-30 52CB45-40 52CB45-50 52CB45-60 52CB45-75 52CB45-85 52CB45-100	52 (197)	3 (76)	52CBE45-15 52CBE45-20 52CBE45-25 52CBE45-30 52CBE45-40 52CBE45-50 52CBE45-60 52CBE45-75 52CBE45-85 52CBE45-100	52 (197)	3 (76)

\*Sq. Ft. EDR / 4 = Lb./hr.

SYSTEM CAPACITY*	PUMP CAPACITY GPM (L/M)	DISCHARGE PRESSURE PSIG (kPa)	MOTOR HORSEPOWER 3500 RPM	DISCHARGE SIZE IN. (mm)	SERIES CB MODEL NO.	CB REC. CAP. GPM (L)	CB INLET SIZE IN. (mm)	SERIES CBE MODEL NO.	CBE REC. CAP. GAL (L)	CBE INLET SIZES IN. (mm)
60,000 Sq. Ft. EDR 15,000 lb./hr. (6,804 kg/hr)	60 (227)	15 (103) 20 (138) 25 (172) 30 (207) 40 (276) 50 (345) 60 (414) 75 (518) 85 (587) 100 (690)	1 1/2 1 1/2 2 2 3 5 5 7 1/2 7 1/2	2 (51)	75CB60-15 75CB60-20 75CB60-25 75CB60-30 75CB60-40 75CB60-50 75CB60-60 75CB60-75 75CB60-85 75CB60-100	75 (284)	4 (102)	75CBE60-15 75CBE60-20 75CBE60-25 75CBE60-30 75CBE60-40 75CBE60-50 75CBE60-60 75CBE60-75 75CBE60-85 75CBE60-100	75 (284)	4 (102)
75,000 Sq. Ft. EDR 18,750 lb./hr. (8,505 kg/hr)	75 (284)	15 (103) 20 (138) 25 (172) 30 (207) 40 (276) 50 (345) 60 (414) 75 (518) 85 (587) 100 (690)	1 1/2 2 2 3 5 5 7 1/2 10 10 15	2 (51) 2 1/2 (64)	75CB75-15 75CB75-20 75CB75-25 75CB75-30 75CB75-40 75CB75-50 Not Available Not Available Not Available Not Available	75 (284)	4 (102)	75CBE75-15 75CBE75-20 75CBE75-25 75CBE75-30 75CBE75-40 75CBE75-50 75CBE75-60 75CBE75-75 75CBE75-85 75CBE75-100	75 (284)	4 (102)
90,000 Sq. Ft. EDR 22,500 lb./hr. (11,000 kg/hr)	90 (341)	15 (103) 20 (138) 25 (172) 30 (207) 40 (276) 50 (345) 60 (414) 75 (518) 85 (587)	1 1/2 2 3 3 5 7 1/2 7 1/2 10 10	2 (51)	120CB90-15 120CB90-20 120CB90-25 120CB90-30 120CB90-40 120CB90-50 Not Available Not Available Not Available	120 (454)	4 (102)	120CBE90-15 120CBE90-20 120CBE90-25 120CBE90-30 120CBE90-40 120CBE90-50 120CBE90-60 120CBE90-75 120CBE90-85	120 (454)	4 (102)
112,000 Sq. Ft. EDR 28,000 lb./hr. (12,701 kg/hr)	112 (424)	15 (103) 20 (138) 25 (172) 30 (207) 40 (276) 50 (345) 60 (414) 75 (518) 85 (587)	3 3 5 5 7 1/2 7 1/2 10 10 15	2 (51) 2 1/2 (64) 2 (51)	NOT AVAILABLE	-	-	120CBE112-15 120CBE112-20 120CBE112-25 120CBE112-30 120CBE112-40 120CBE112-50 120CBE112-60 120CBE112-75 120CBE112-85	120 (454)	4 (102)
140,000 Sq. Ft. EDR 34,748 lb./hr. (15,762 kg/hr)	140 (530)	25 (172) 30 (207) 40 (276) 50 (345) 60 (414) 75 (518) 85 (587)	5 5 7 1/2 7 1/2 10 15 15	2 1/2 (64) 2 (51)	NOT AVAILABLE	-	-	120CBE140-25 120CBE140-30 120CBE140-40 120CBE140-50 120CBE140-60 120CBE140-75 120CBE140-85	120 (454)	4 (102)

\*Sq. Ft. EDR / 4 = Lb./hr.

### Series CB Standard Unit Features

- Cast iron receiver.
- All simplex receivers have a blanked opening for second pump.
- Cast Iron Receivers are warranted for 20 years from date of shipment against failure due to corrosion.
- Series B35 centrifugal pump(s) with drip-proof motors. Pump capacity sized 2 times system return rate.
- Float switch(es).

### Optional Features

- Water level gauge w/shutoff valve
- Dial Thermometer
- Inlet Basket Strainer
- Discharge Pressure Gauges
- Mechanical Alternator provides sequencing of duplex pumps and stand-by of second pump on high level.
- NEMA 2 - U.L. Listed Control Panels - see page 4.
- Suction Butterfly Valve (optional on Series CB Units only, on capacities to 75 gpm)
- Lifting Eyes

### Ordering Instructions

Specify Model No., single or duplex, phase, operating voltage, special features.

Note: TEFC motors are available. A horsepower increase is not necessary when using TEFC Motors.

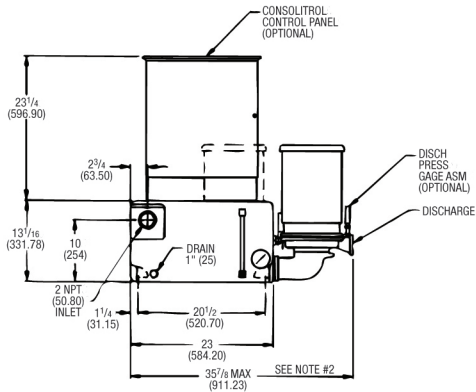
### Series CBE Standard Unit Features

- Cast iron receiver mounted on a welded steel stand.
- All simplex receivers have a blanked opening for second pump.
- Cast Iron Receivers are warranted for 20 years from date of shipment against failure due to corrosion.
- Series B35 centrifugal pump(s) with drip-proof motors. Pump capacity sized 2 times system return rate.
- Float switch(es).
- Suction piping isolation valves.

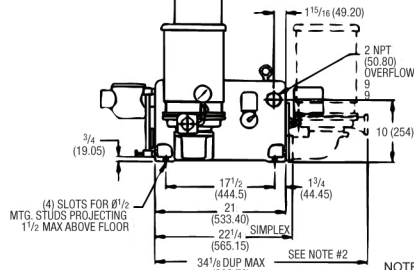
# ROUGHING-IN DIMENSIONS All dimensions in inches (mm)

Not to be used for installation - CERTIFIED DIMENSIONS ON REQUEST

## SERIES CB CONDENSATE UNITS

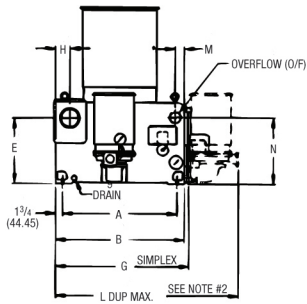


**2DCB01**  
**23 GALLON (87L)**

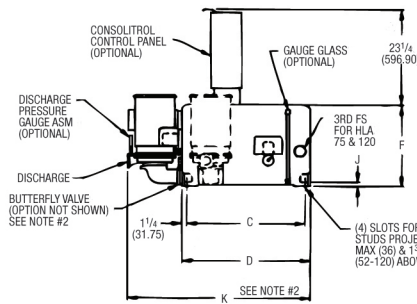


NUMBERS IN ( ) = MM

NOTES:  
1. OPTIONAL BASKET STRAINER SHIPPED LOOSE.  
2. OPTIONAL BUTTERFLY VALVE(S) REQUIRES THE ADDITION OF 2" TO OVERALL DIMENSION.



**2DCB02**  
**36-120 GALLON**  
**(136-454L)**

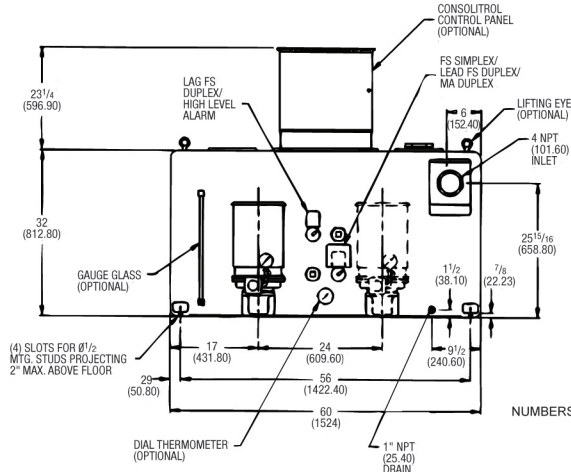


NUMBERS IN ( ) = MM

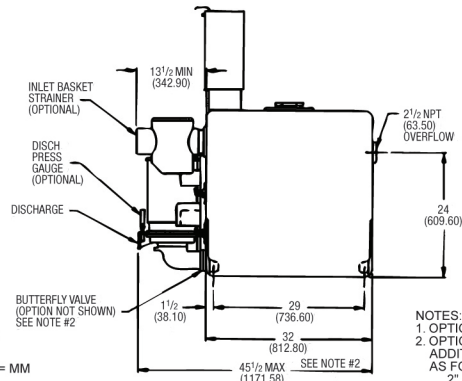
NOTES:  
1. OPTIONAL BASKET STRAINER SHIPPED LOOSE.  
2. OPTIONAL BUTTERFLY VALVE(S) REQUIRES ADDITION TO THE OVERALL DIMENSION AS FOLLOWS:  
2" FOR 0-50 GPM  
5" FOR 51-75 GPM.  
3. ALL OPENINGS ARE NPT.

CAP CAP (L)	VENT & O/F	INLET	A	B	C	D	E	F	G	H	J	K MAX	L MAX	M	N	DRAIN
36 (136)	2 (51)	3 (76)	21 1/4 (540)	24 3/4 (629)	21 1/2 (546)	24 (610)	13 (330)	15 13/16 (402)	26 5/16 (668)	2 1/2 (64)	3/4 (19)	38 1/8 (968)	38 7/8 (987)	1 15/16 (49)	12 1/2 (318)	1 (25)
52 (197)	2 (51)	3 (76)	24 1/4 (616)	27 3/4 (705)	25 1/4 (641)	27 3/4 (705)	14 (356)	16 13/16 (427)	29 5/16 (745)	2 7/8 (73)	1 (25)	41 7/8 (1064)	41 7/8 (1064)	1 15/16 (49)	13 1/2 (343)	1 (25)
75 (284)	2 1/2 (64)	4 (102)	27 3/4 (705)	31 1/4 (794)	28 3/4 (730)	31 1/4 (794)	16 (406)	19 13/16 (503)	32 13/16 (833)	3 1/2 (89)	1 (25)	45 3/8 (1153)	45 3/8 (1153)	2 3/16 (56)	15 7/32 (387)	1 (25)
120 (454)	2 1/2 (64)	4 (102)	36 1/4 (921)	39 3/4 (1010)	30 3/4 (781)	32 3/4 (832)	20 (508)	24 (610)	41 3/16 (1046)	4 (102)	1 (25)	46 7/8 (1191)	53 7/8 (1368)	2 1/2 (64)	19 7/32 (488)	2 1/2 (64)

## SERIES CB RECEIVER



**2DCB03**  
**250 GALLON (946L)**



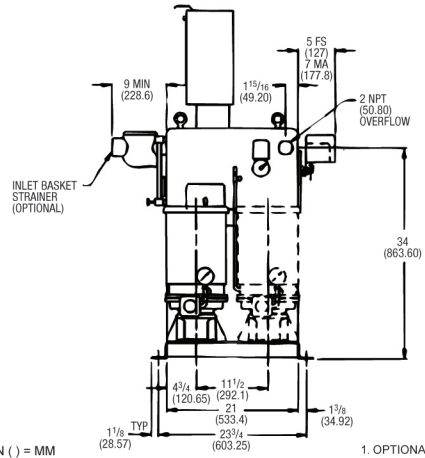
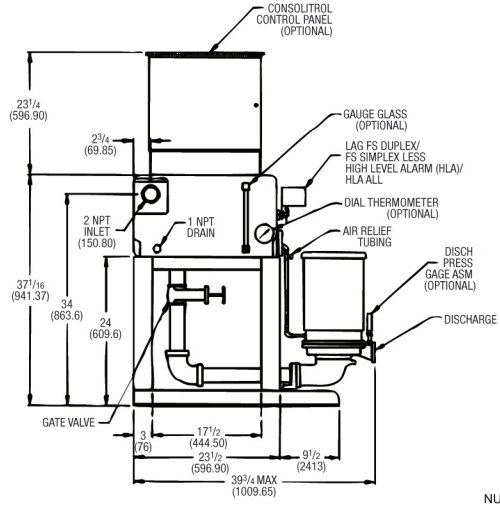
NUMBERS IN ( ) = MM

NOTES:  
1. OPTIONAL BASKET STRAINER SHIPPED LOOSE.  
2. OPTIONAL BUTTERFLY VALVE(S) REQUIRES ADDITION TO THE OVERALL DIMENSION AS FOLLOWS:  
2" FOR 0-50 GPM  
5" FOR 51-75 GPM.

# ROUGHING-IN DIMENSIONS All dimensions in inches (mm)

Not to be used for installation - CERTIFIED DIMENSIONS ON REQUEST

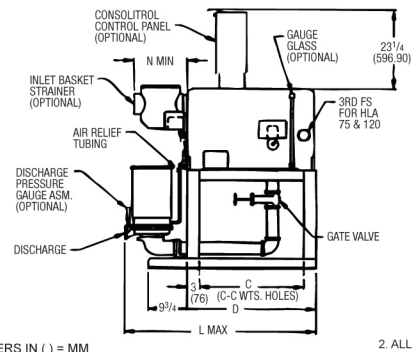
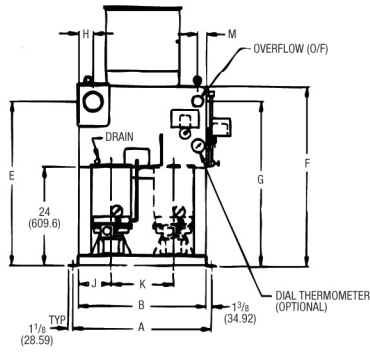
## SERIES CBE CONDENSATE UNITS



**2DCB06**  
**23 GALLON (87L)**

1. OPTIONAL BASKET STRAINER SHIPPED LOOSE.

NUMBERS IN ( ) = MM



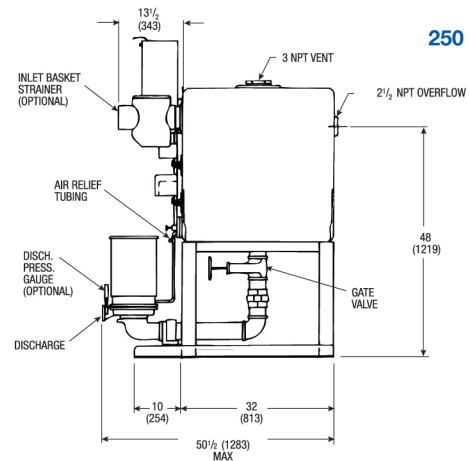
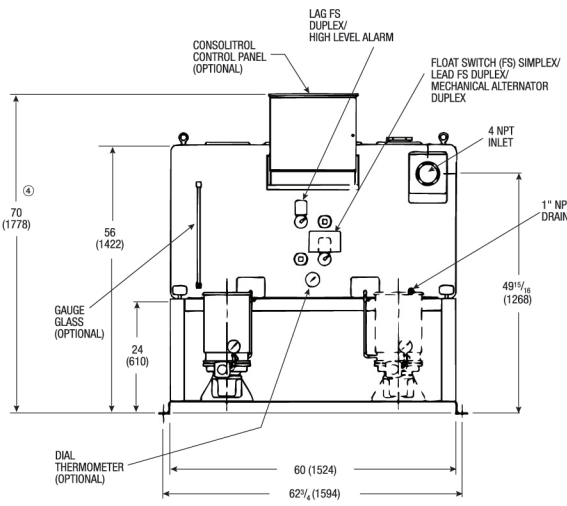
**2DCB07**  
**36-120 GALLON (136-454L)**

2. ALL OPENINGS ARE NPT.

NUMBERS IN ( ) = MM

CAP CAP (L)	VENT & O/F	INLET	A	B	C	D	E	F	G	H	J	K	L MAX	M	N MIN	DRAIN
36 (136)	2 (51)	3 (76)	27 1/2 (699)	24 3/4 (629)	18 1/4 (464)	24 1/2 (616)	37 (940)	39 13/16 (1011)	36 1/2 (927)	2 1/2 (64)	5 (127)	14 3/4 (375)	40 1/8 (1019)	1 15/16 (49)	11 (279)	1 (25)
52 (197)	2 (51)	3 (76)	30 1/2 (775)	27 3/4 (705)	22 (559)	28 (711)	38 (965)	40 13/16 (1037)	37 1/2 (953)	2 7/8 (73)	6 (152)	15 3/4 (400)	43 7/8 (1114)	1 15/16 (49)	11 (279)	1 (25)
75 (284)	2 1/2 (64)	4 (102)	34 (864)	31 1/4 (794)	25 3/4 (654)	31 3/4 (806)	40 (1016)	43 13/16 (1113)	39 7/32 (996)	3 1/2 (89)	8 (203)	15 1/4 (387)	48 1/2 (1232)	2 3/16 (56)	13 3/16 (335)	1 (25)
120 (454)	2 1/2 (64)	4 (102)	42 1/2 (1080)	39 3/4 (1010)	27 (686)	33 (838)	44 (1118)	48 (1219)	43 7/32 (1098)	4 (102)	10 (254)	19 3/4 (502)	49 3/4 (1264)	2 1/2 (64)	13 3/16 (335)	2 1/2 (64)

## SERIES CBE RECEIVER



**2DCB08**  
**250 GALLON (946L)**

NUMBERS IN ( ) = MM



**NEMA 2/U.L. LISTED  
CONTROL PANEL**

## **OPTIONAL ELECTRIC CONTROLS**

### **Description of Optional Panel Components:**

- Magnetic Starters must be used on all 3 phase motors and single phase motors over 2 HP.
- Disconnect Switches and Circuit Breakers. Either fuses or a circuit breaker is required ahead of the starters to protect against short circuits. A disconnect switch or circuit breaker also provides a means of shutting off power for service.
- Selector Switches - "Auto-Off-Hand" selector switches provide a means of shutting off pumps and a means of testing in the "Hand" position. "Off-Hand-Lead-Lag" selector switches may be furnished on duplex units with 2 float switches to provide manual alternation.
- Electric Alternator may be furnished on duplex units to provide automatic sequencing of lead pump. Use only when magnetic starters are provided and only with 2 float switches.
- Transformer is required by the National Electrical Code to reduce control voltage when power supply exceeds 250 volts. A transformer is recommended when voltage exceeds 130 volts. Refer to local codes for requirements.
- Pilot Lights - Pump running pilot lights are available to indicate pump operation.
- Audible Alarm - An alarm to indicate low or high water level may be furnished. A separate tank mounted level switch should be provided with an alarm.

Specified Panel Components to be furnished with unit at extra cost.

**Standard panels are supplied with NEMA 2 enclosures and are U.L. listed unless otherwise specified.**



# Xylem |'zīləm|

- 1) The tissue in plants that brings water upward from the roots;
- 2) a leading global water technology company.

We're a global team unified in a common purpose: creating advanced technology solutions to the world's water challenges. Developing new technologies that will improve the way water is used, conserved, and re-used in the future is central to our work. Our products and services move, treat, analyze, monitor and return water to the environment, in public utility, industrial, residential and commercial building services, and agricultural settings. With its October 2016 acquisition of Sensus, Xylem added smart metering, network technologies and advanced data analytics for water, gas and electric utilities to its portfolio of solutions. In more than 150 countries, we have strong, long-standing relationships with customers who know us for our powerful combination of leading product brands and applications expertise with a strong focus on developing comprehensive, sustainable solutions.

**For more information on how Xylem can help you, go to [www.xyleminc.com](http://www.xyleminc.com)**

Instruction manuals, specifications and parts lists can be found on our website [www.bellgossett.com](http://www.bellgossett.com)

We value your feedback. Please take our 3 question survey at **[bellgossett.com/survey](http://bellgossett.com/survey)** to let us know how we are doing.



Xylem Inc.  
8200 N. Austin Avenue  
Morton Grove, Illinois 60053  
Phone: (847) 966-3700  
Fax: (847) 965-8379  
[www.bellgossett.com](http://www.bellgossett.com)

Bell & Gossett is a trademark of Xylem Inc. or one of its subsidiaries.  
© 2018 Xylem Inc. S-225J January 2018