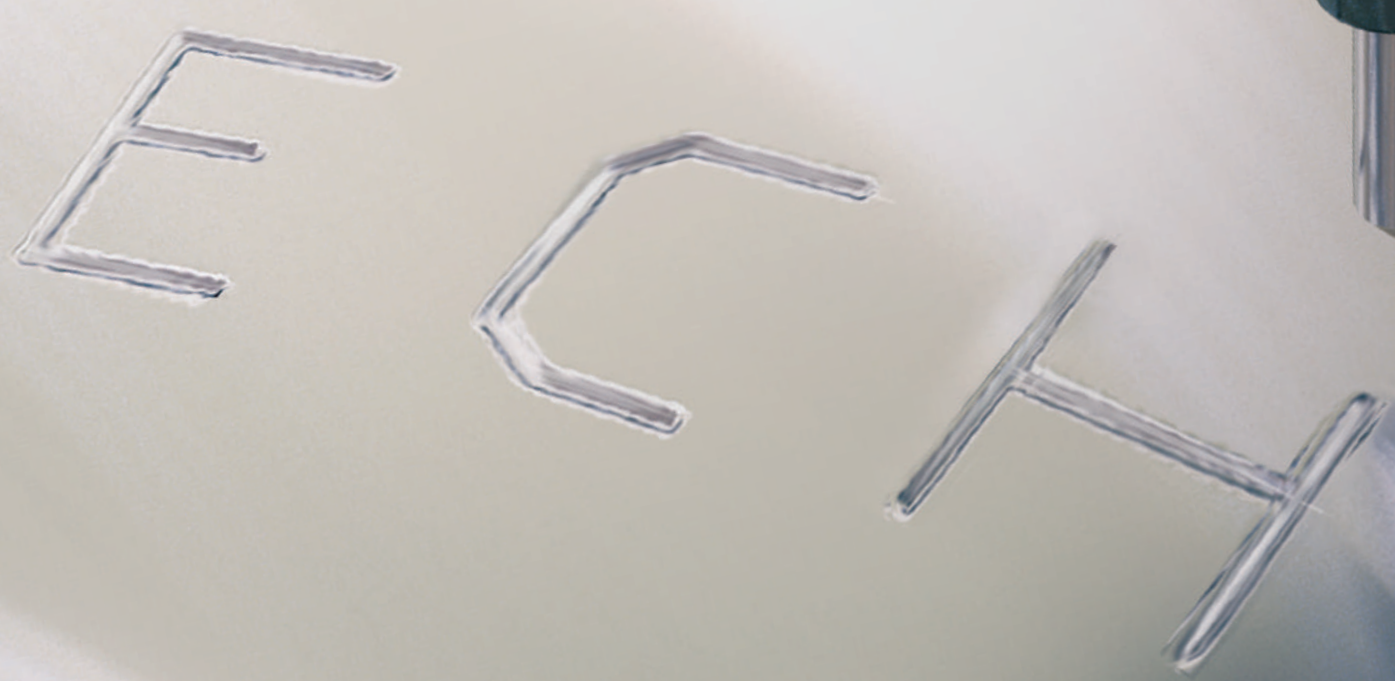


**MULTI** 4<sup>®</sup>

DOT PEEN & SCRIBING



**TECHNO**mark<sup>®</sup>

CREATIVE TRACEABILITY



EXPERT IN PERMANENT MARKING  
AND INDUSTRIAL TRACEABILITY SOLUTIONS



Over 18 years\* of creativity, innovation  
and experience

Technomark is designing the future of marking  
technology.

\*Since 2000

## MARKING TECHNOLOGY SPECIALISTS

TECHNOMARK offers two direct part marking technologies:

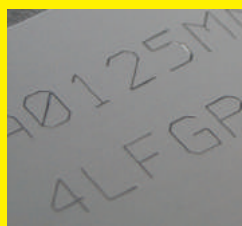
### ELECTROMAGNETIC DOT PEEN

Create characters, symbols and codes by cold forming dots directly into the work piece material through an oscillating stylus. This method creates a permanent, low stress mark on most materials under 63 HRC.



### PNEUMATIC SCRIBING

Scribe marks are achieved by penetrating a stylus into material under pneumatic pressure, creating highly visible, continuous line characters. The scribing process is quiet, less than 72 dB(A), and ideal for marking applications where excessive noise may be an issue, for tooling of high hardness and also aesthetical marking.



## QUALITY MARKING AND ENVIRONMENTALLY FRIENDLY.

Currently, TECHNOMARK is the only company in France to have obtained both of the following certifications: ISO 9001 Version 2008 and Investor in People.

### Emphasis of Certification:

- Knowledge base and quality management
- Interpersonal skills and the quality of its management



INVESTOR IN PEOPLE



# 1 PRODUCT 4 CONFIGURATIONS

- **Easy to use:** simple user interface, intuitive navigation, new and improved features.
- **Intuitive:** icon based navigation menu allows for quick understanding and operation of the software.
- **Ergonomic handling:** support foot, controller handgrip and handle on the marking head (optional).
- **Light weight Compact:** marking head weight only 10.5 lbs.

## INTELLIGENT TECHNOLOGY

### 3D MARK

Is based on the ability of our machines to anticipate the surface contour of the parts to be marked thanks to Intelligent Driving Impact Innovation (IDI \*)



#### Intelligent driving impact

IDI Mark&Track is the intelligent driving impact developed by Technomark. It analyses the distance between the part and the stylus in order to ensure a marking quality never seen before.

This **unique function** automatically detects component dimensional variations, adjusting the marking force to provide consistent high quality marking.



#### Maximize uptime via predictive maintenance

This intelligent system will notify when maintenance is required and what action needs to be taken.



(1) Marking with IDI Track

\* Intelligent Driving Impact – Patent n° EP 06 764715.6  
Patent n° US-9,421,598  
Patent n° JP-2009-512631



Displayed model : Multi4 200

# MULTI 4<sup>®</sup>

Bench

For very small, to medium sized parts

**PRECISE**

Multiple setting options for optimal positioning of the marking head.

**SMART**

Fast vertical height adjustment with "Quick Shift" feature (see technical features).

**SIMPLE**

Ergonomics are optimised for marking many different part configurations.

**EFFICIENT**

Easy to start marking, from a single part to mass production.

## MARKING APPLICATIONS

- (1) Marking of a nameplate
- (2) Marking of a serial number on a metal part



1



2



**NEW**  
**MULTI 4**<sup>®</sup> + **iic**  
 Mini

Model presented: Multi4 50 & Multi4 Mini

# MULTI 4<sup>®</sup>

## Hand-Held

### INNOVATIVE DESIGN

Compact, lightweight and ergonomic form makes the Multi 4 handheld/mini the ideal equipment for marking of heavy and hard-to-reach parts.

### CONTROLLED IMPACT\*



This innovation automatically controls the stylus/ part distance setting only. The force needs to be selected. With a fixed stylus/ part distance, Intelligent Impact Control (IIC) guarantees an optimal spreading between the 6 forces allowing fine and precise, moderate or deep marking.

\* For the Multi4 Mini range only

 The subset (marking head) is compatible with the existing Technomark range.

## Ideal for large and cumbersome parts

### AUTONOMOUS

With an optional battery kit, it can be used in locations where power source is unavailable.

### EASY TO USE

Its specially designed locator and anti-slip surface allows for excellent support while marking.

### STRONG

Its cast aluminium frame makes it robust and strong while reducing maintenance needs.

### HANDY

An additional handle (optional)\*\* can be mounted to the marking head for increased stability, regardless of the head position.

\*\* For the Multi4 portable range only

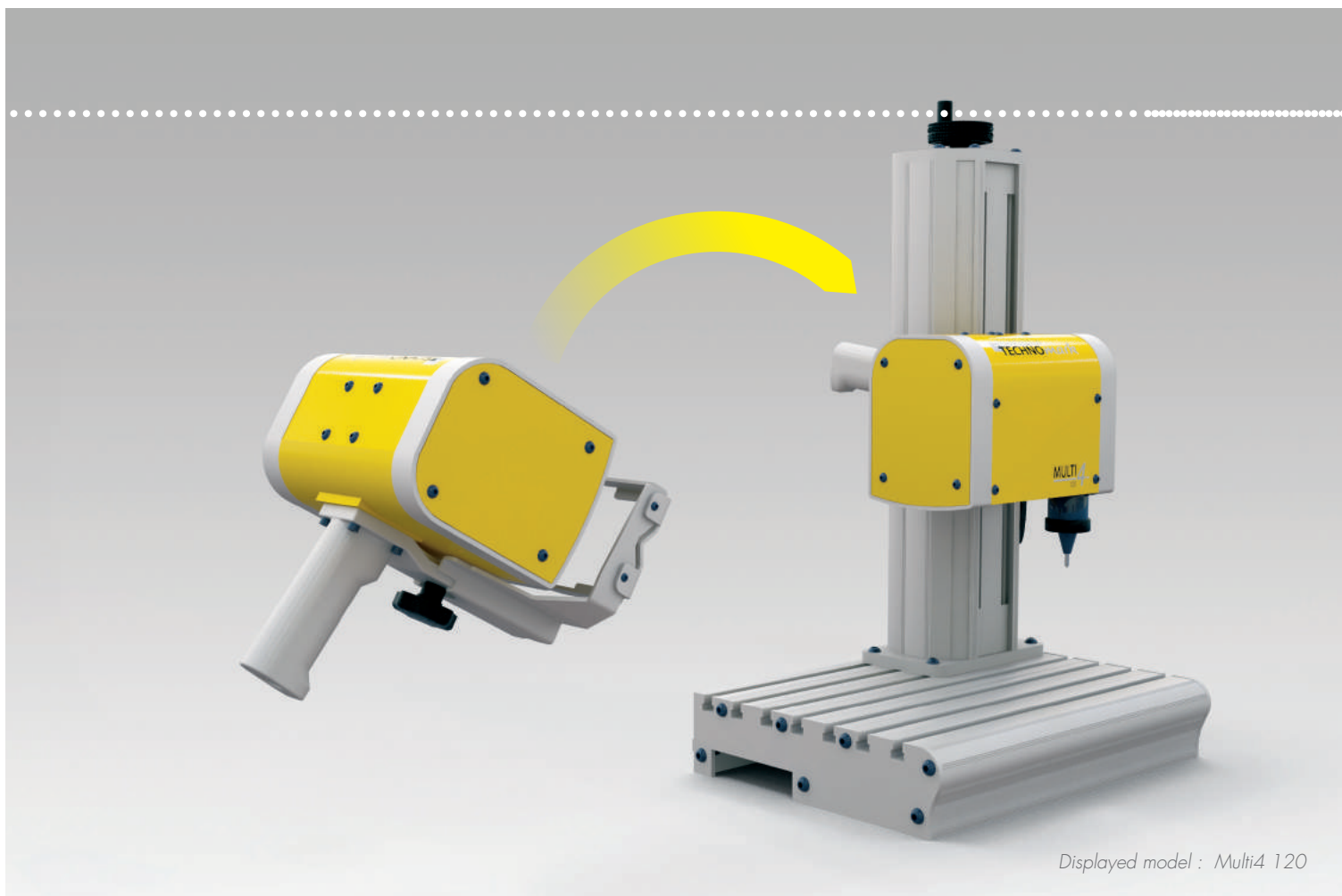
## MARKING APPLICATIONS

(1) Marking of a cylindrical part in bronze



(2) Multi lines radial marking





# MULTI 4<sup>®</sup>

Combo

## Versatile - Benchtop & Hand Held all-in-one system

### DIVERSE

Ability to mark small components to parts weighing several tons.

### INTUITIVE

With its user friendly software, the Multi4 Combo is very simple to use.

### FLEXIBLE

In less than 10 seconds, without tools, the Bench version can be converted into a Hand-held system.

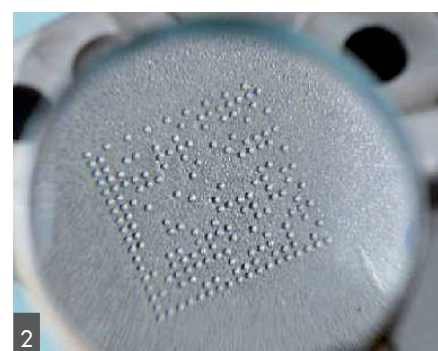
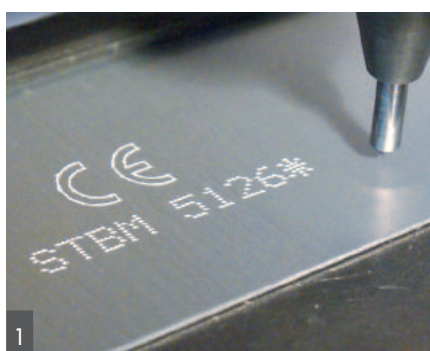
### VALUE FOR MONEY

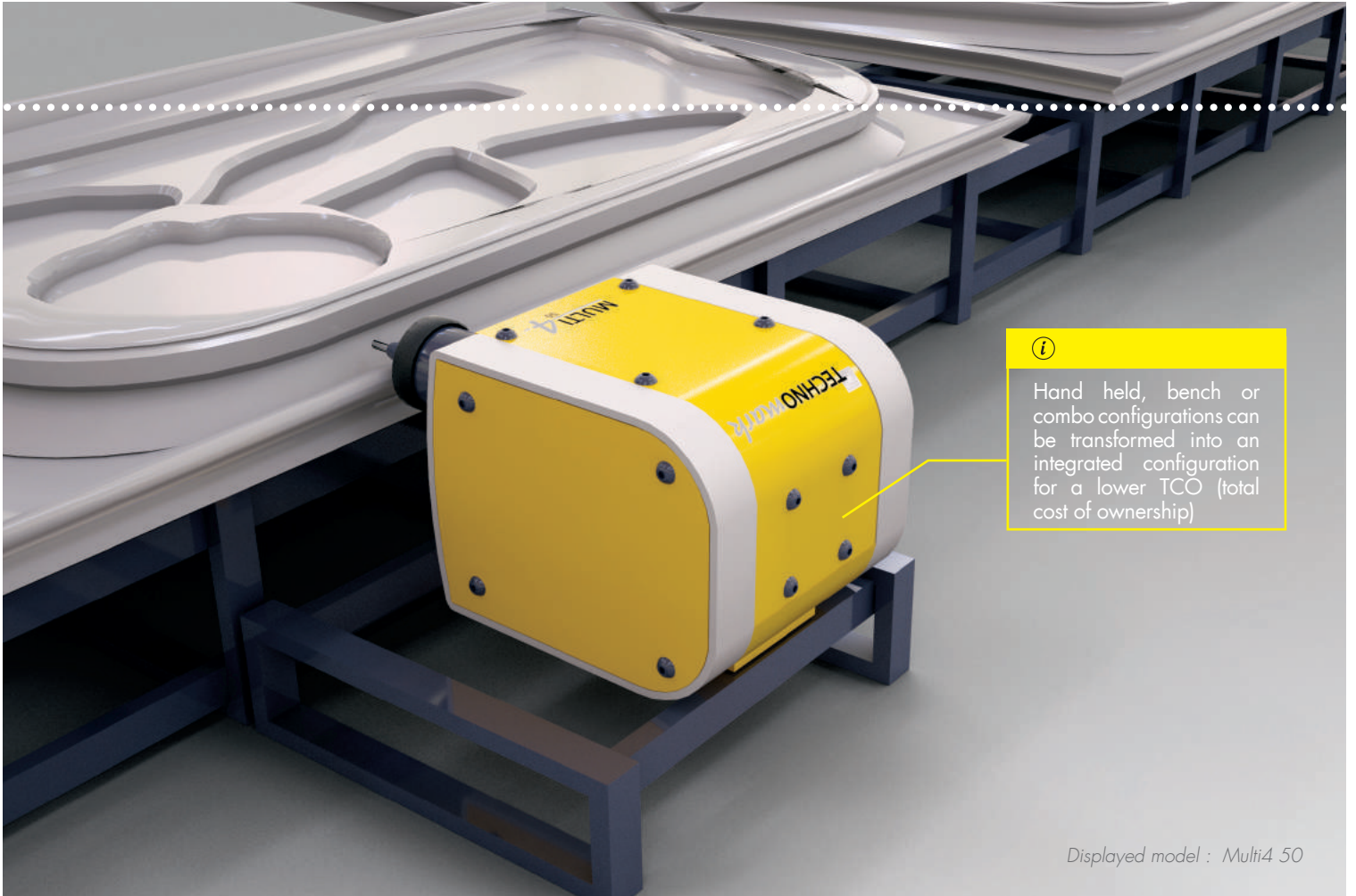
Based on its flexibility, you receive both a portable and benchtop machine in a single marking system.

## MARKING APPLICATIONS

(1) Serial number with a logo

(2) Datamatrix marking





**i**  
 Hand held, bench or combo configurations can be transformed into an integrated configuration for a lower TCO (total cost of ownership)

Displayed model : Multi4 50

# MULTI 4<sup>®</sup>

Integrated

## Compact - Fits perfectly into automated processes

### ADAPTABLE

With its small footprint, production line integration is simple and easy.

### PRODUCTIVE

Possible to mark several characters per second.

### EASY TO CONFIGURE

The Multi4 can be controlled from an external source through the serial port, robot or Ethernet connection.

### SMART

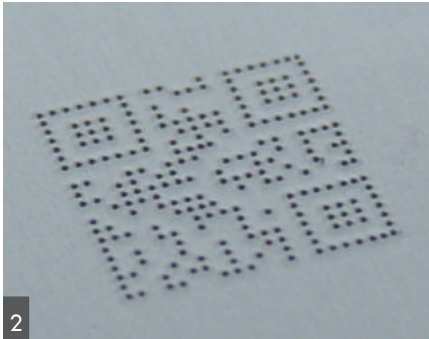
Real-time Multi4 monitoring for analysis of maintenance needs, stylus wear and detection faults (auto-diagnosis feature with 5 control points).

## MARKING APPLICATIONS

- (1) Standard OCRA marking on steel
- (2) Marking of a Q.R code



1



2

## MULTI4 CONTROL UNIT



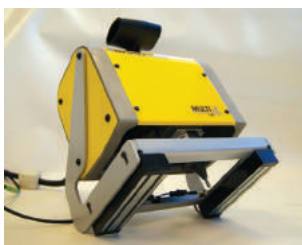
**NEW**

- > Front panel and reworked keyboard
- > Updated software icons and high definition color screen comfort

- High resolution (640x480) colour screen with icon based navigation
- RS232 connection, 3 Inputs / 4 Outputs, Ethernet (option)
- 2 USB : Device Port & HOST
- Additional axis management is optional (4 axis in total)
- Embedded software in 21 different languages.
- Intelligent handling of the marking
- Memory capacity of 40Mb can accommodate up to 20,000 stored, marking files (40 characters, 1 line)
- Well designed ergonomics (locating foot and carriage handle)
- Fast updates in less than 2 minutes through USB port
- Various marking modes: Text, variable data, serial number, data codes, logos and 2D codes.
- Straight, angular, circular and radial marking
- « Easy Shift » feature : displays text moving in the marking window.
- (L x W x H) : 14,57" x 8,46" x 5,47"
- 8,16 lbs (including power card)  
10,80 lbs (including optional battery)
- 3rd axis included as standard



## MAIN ACCESSORIES AND OPTIONS



Magnetic head support



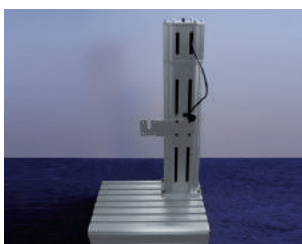
Standard Rotary D axis



Transport trolley



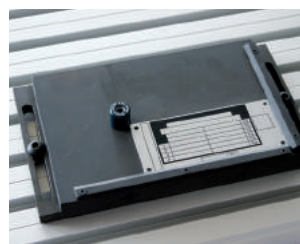
Maintenance kit



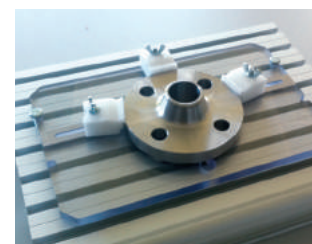
Bench with motorised column with automatic adjustment of stylus/part distance



Bar end tool



Plates support



Parts support



# TECHNICAL DETAILS

● Standard ○ Optional - Non available

	MULTI 4 <sup>®</sup> Bench	MULTI 4 <sup>®</sup> Hand-Held	MULTI 4 <sup>®</sup> Combo	MULTI 4 <sup>®</sup> Integrated <small>see page 7</small>	MULTI 4 <sup>®</sup> Mini
<b>MARKING WINDOW</b>					
MINI Head (in)	-	-	-	-	2.3x1.1
COMPACT 50 Head (in)	1.97 x 2.36	1.97 x 2.36	1.97 x 2.36	1.97 x 2.36	-
STANDARD 120 Head (in)	4.72 x 2.36	4.72 x 2.36	4.72 x 2.36	4.72 x 2.36	-
LARGE 200 Head (in)	7.87 x 2.36	7.87 x 2.36	-	7.87 x 2.36	-
EXTRA LARGE 200 Head (in)	7.87 x 7.87	-	-	7.87 x 7.87	-
<b>TECHNICAL CHARACTERISTICS</b>					
Head configuration	LARGE	COMPACT	STANDARD	COMPACT	MINI
Head (L x W x H) (in)	11.6 x 5.7 x 8.9	5.7 x 10.5 x 8.9 <small>(Excluding upper handle / including gun kit)</small>	8.5 x 10.5 x 8.9 <small>(Excluding upper handle)</small>	5.7 x 5.7 x 8.9	7.0 x 3.7 x 8.9 <small>(Excluding upper handle)</small>
Bench (L x W x H)	16.2 x 12.2 x 25.8	○	16.2 x 12.2 x 25.8	○	-
Weight (Head) (lbs) <small>(Excluding the cable)</small>	8.1	9.2	8.3	6.6	2.3
Weight (Bench - Column) (lbs)	39.6	○	39.6	○	-
<b>POWER AND ENVIRONMENT</b>					
Power (W)	250	250	250	250	250
Frequency (Hz)	50 to 60	50 to 60	50 to 60	50 to 60	50 to 60
Input Power (V)	90 to 240	90 to 240	90 to 240	90 to 240	90 to 240
Operating temperature (°F)	32° to 113	32° to 113	32° to 113	32° to 113	32° to 113
<b>STANDARDS</b>					
2006/42/CE «machines» directive	●	●	●	●	●
2014/30/UE «CEM» directive	●	●	●	●	●
2014 /35/UE «low voltage» directive	●	●	●	●	●
FCC Chapter 15 directive	●	●	●	●	●
<b>ACCESSORIES AND OPTIONS</b>					
4th axis	○	-	○	-	-
Suspension hook	-	○	-	-	-
Heavy duty rotary D axis	○	-	○	-	-
Standard rotary D axis	○	-	○	-	-
Electric up/down Z axis	○	-	-	-	-
Start/stop box	○	-	○	○	-
5 or 10m cable	-	○	○	○	-
8 Inputs/Outputs card	○	○	○	○	-
Automatic nameplate/tag feeder	○	-	○	-	-
Transport trolley	-	○	○	-	-
Electrical column	○	-	○	-	-
Extended column (+3.93 inches)	○	-	○	-	-
Battery kit	-	○	○	-	○
Maintenance kit	○	○	○	○	○
Bench kit	●	○	●	-	-
Bar-end tool	-	○	○	-	-
Software pack	○	○	○	○	○
Support foot	-	●	●	-	-
Magnetic head support	-	○	-	-	-
Cycle start footpedal	○	-	○	-	-
Ethernet port	○	○	○	○	○
Additional holding handle	-	○	○	-	-
Extended bench	○	-	○	-	-
90° cable connection	-	-	-	○	-
Protective cover	○	○	○	●	-
Parts support	○	-	○	-	-
Plates support	○	-	○	-	-
Storage case	-	-	-	-	○

## INNOVATION & SERVICES FOR YOU AND WITH YOU

### INVESTING IN RESEARCH

10% of our turnover goes towards Research & Development while 25% of our workforce are dedicated to the continuous innovation of our products.

All new products developed must meet 4 criteria:

- Quality
- Technological or technical innovation
- Quality / price / performance ratio
- Eco conception

### SUBMIT A PERSONALISED OFFER

To give you the best answers, our teams have the following skills:

- Mechanical
- Automation
- Vision Systems
- Electronics
- Industrial data
- Robotics



## READING

Technomark offers a complete range of the latest reading technology for 1D barcodes and 2D codes including Datamatrix codes, QR codes, standard OCR and OCR-A fonts.

Reading systems exist both in Hand-held or Fixed version.



*Datamatrix code reading*

## SOFTWARE

Technomark offers a set of software dedicated to:

- Logo design with LOGPRO
- Production monitoring with TECHNOPROD
- Datamatrix (2D) encoding with TECHNOMATRIX
- File transfer and backup with TECHNOSAVE
- PC based Windows software with TECHNOWINDOWS



## INDUSTRY 4.0

Technomark is part of the economic reality of the future. The challenges of the 4th industrial revolution: offer intelligent solutions coupled with the advanced services, where each of the stakeholders is connected, for improved performance.

## APPLICATIONS

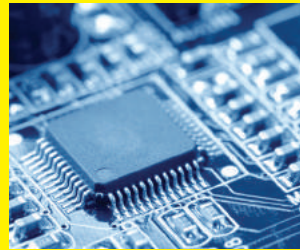
Our expert knowledge is used in various industrial sectors including:  
Aerospace, Automotive, Defense, Medical, Nuclear, Metal working



*Aerospace*



*Automotive*



*Electronics*



*Energy*



*Rails*



*Lifting / Civil Engineering*



*Mechanics*



*Medical*



*Metals*



*Motorcycle*



*Oil drilling*



*Transport*



*Metal working*

## TECHNOMARK global presence

Our distribution network is established in 47 countries, including 5 Techncenters



### TECHNOMARK services

#### pre-sales

- Feasibility study
- Sample Marking
- On-site demonstration
- Financing solutions

#### After-sales

- Phone support
- Service
- Maintenance contracts
- Product Training
- Loan Equipment



# 98%

Average satisfaction rate of our customers over 3 years\*

# 96%

Average recommendation rate of our customers over 3 years\*

\*source Cabinet Prestance, France Study, january 2018.

**TECHNOMARK**<sup>®</sup>

Technomark North America  
13626 Poplar Circle, Suite 502  
Conroe, TX 77304

Tel: (936) 270-7180  
Fax: (936) 230-5679  
E-mail: [info@imsa-marking.com](mailto:info@imsa-marking.com)

[www.imsa-marking.com](http://www.imsa-marking.com)

