



Finished Double Wedding Ring Table Runner

Enjoy Creating New Design Possibilities!

Use different fabrics for Piece C within a ring.

Piece B can be a single fabric - no piecing.

Individual blocks can be rotated, then pieced to create new layouts.

What is the Slit 'N Sew™ Method by Quilter's Paradise?

Slits cut into pieces for easy and perfect alignment during piecing - each and every time.

No tedious pinning or paper piecing saving lots of time and effort!

Can be performed by all quilters, from beginner to expert!

Please visit our web site for more information, videos and other Slit 'N Sew products.

Making Quilting Simpler
www.quiltersparadiseesc.com

CutRite™ Double Wedding Ring Template Set

Using the *Slit 'N Sew™* Method

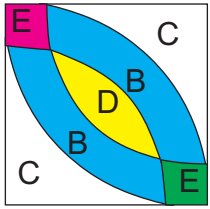
The Fastest, Easiest Way to Piece for Quilters of all Skill Levels



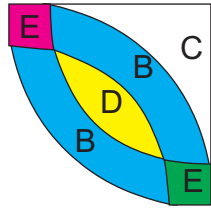

Quilter's Paradise
 Making Quilting Simpler
www.quiltersparadiseesc.com

Designed and Written by Quilter's Paradise
 © Quilter's Paradise All rights reserved.
 Made in USA

There are 5 templates as shown below.



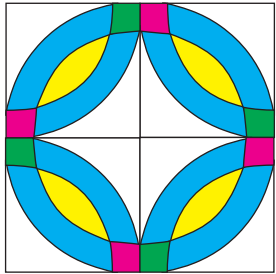
Inside block



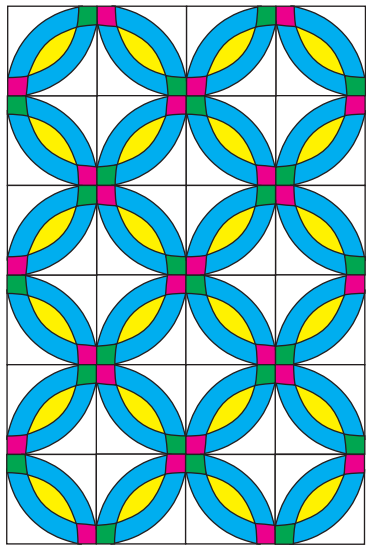
Outside block



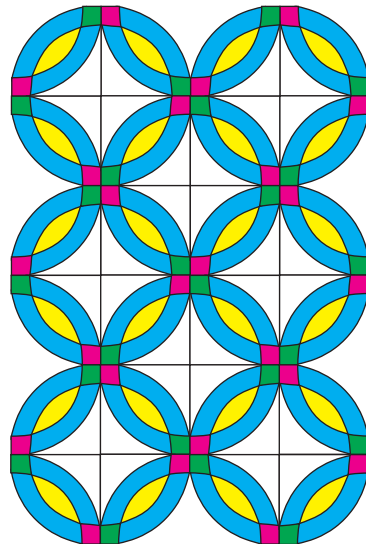
B is composed of 6 A's.



A full ring occurs when 4 blocks are put together as shown.



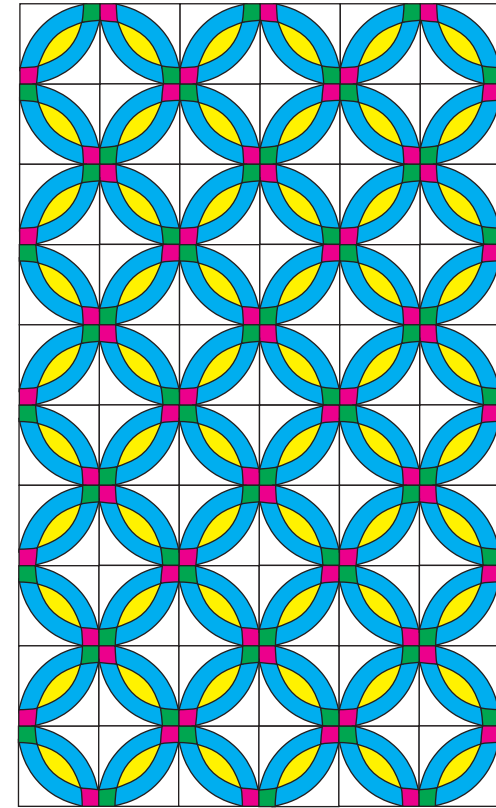
I prefer having full blocks and using a non bias binding.



You can achieve a traditional double wedding ring by leaving out one Piece C on the outside blocks.

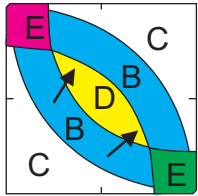
3 rings by 5 rings
need 15 inside rings

Pieces needed for 15 Rings	
Piece	Inside Block Qty
A	720 or 0*
B	120
C	120
D	60
E	120
*0 if Piece B of 1 fabric	

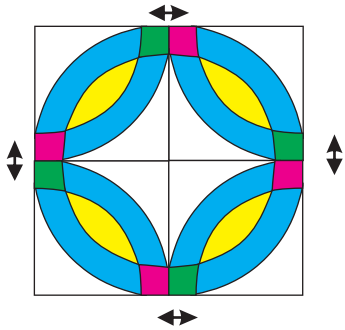


48"x80"

1 2.5" strip 40 for Piece A and Piece E
1 10" square for Piece C and Piece D



Press to the D.



To make a ring sew 4 blocks together as shown. Press the seams open.

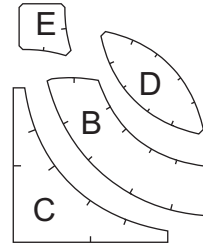
A ring is 16" finished

Number of pieces get from precut							
Piece	2.5" square 40 or 42	2.5" strip 40	2.5" strip 42	5" square 40	5" square 42	10" square 40	10" square 42
A	40/42	720	756	160	168	2160	16
B						320	84
C						320	84
D						160 or 400*	42 or 126
E	40/42	720	756	160	168	2160	16
*160 if 8 piece C's are cut with 10" square.							
**42 if 2 piece C's are cut with 10" square.							

To calculate the yardage needed for the pieces for your project, you may use our free Slit 'N Sew Fabric Calculator at <https://www.quiltersparadiseesc.com/Calculators/SnS Fabric Calculator/Slit N Sew Fabric Calculator.php>.



6 Piece A's are needed to make 1 Piece B. (Alternatively Piece B can be made out of one fabric and not use Piece A.) This is your choice.



Follow the table below to cut the pieces needed for 1 block. You will need 4 blocks to create an entire ring.

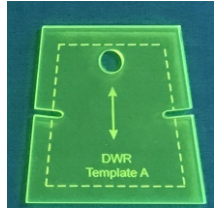
Pieces needed for One Block		
Piece	Inside Block Qty	Outside Block Qty
A	12 or 0*	12 or 0*
B	2	2
C	2	1
D	1	1
E	2	2
* 0 if Piece B of 1 fabric		

Number of pieces cut from one shape						
Piece	2.5" square	2.5" strip	3.5" strip	5" square	7.5" strip	10" square
A	1	18	18	4	54	16
B			4		8	2
C					8	2
D					4 or 10*	1 or 3**
E	1	20	20	4	54	16
*4 if 8 piece C's are cut with 7.5" strip.						
**1 if 2 piece C's are cut with 10" square..						

Each ring needs 4 blocks.

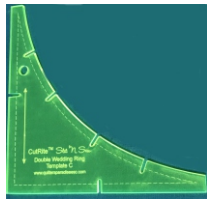
Cutting Directions

Remove templates from package. Affix the CutRite™ HandiGrabber material to the back of the templates so they will not slide when cutting.



Fully cut out Piece A and cut each slit.
Always cut from the inside to the outside!

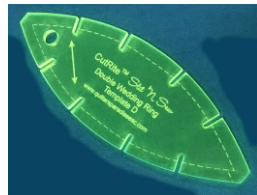
Piece B cannot be cut until 6 Piece A's are sewn together. If Piece B is made out of one fabric, then it can be cut out. (See page 6 step 2.)



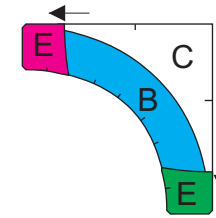
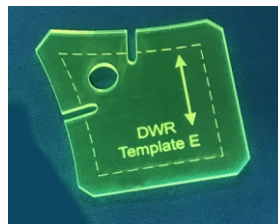
Fully cut out Piece C and cut each slit.



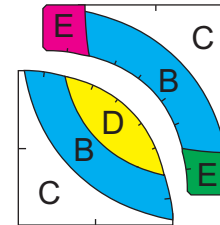
Fully cut out Piece D and cut each slit.



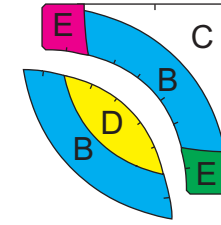
Fully cut out Piece E and cut each slit.



Press to Piece E.

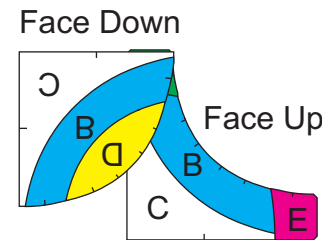


Inside block

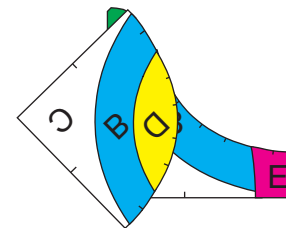


Outside block

You now have to finish the block. It is either an inside or an outside block.



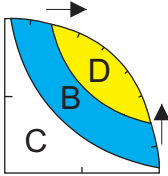
Place Piece DBC right side down to Piece BCE (right side up) matching the top edges. Start sewing 1/4" seam stopping with needle down after 3 to 4 stitches.



Raise the pressure foot and tug Piece D and Piece B matching the slits. Lower the pressure foot and sew 1/4" seam to the next slit.

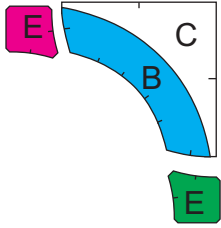
Continue pulling and sewing until you are just past the last slit.

Leave the needle down, stop and raise the pressure foot. Tug so that the edge of Piece DBC matches the edge of Piece BCE. Lower the pressure foot and stitch to the edge.

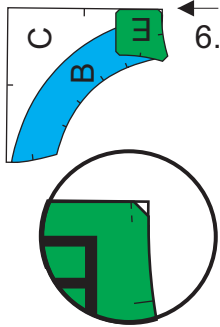


Press to Piece D.

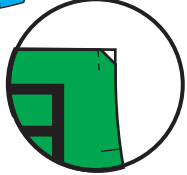
5. Follow Step 3 to combine Piece B & Piece C.



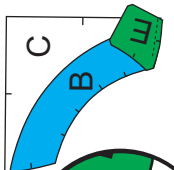
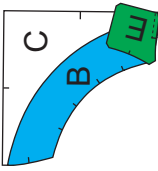
We need to add an E to each end.



6. Place Piece E right side down to Piece C (right side up) matching the top edges. Start sewing 1/4" seam stopping with needle down after 3 to 4 stitches.



Raise the pressure foot and tug Piece E and Piece B matching the slits. Lower the pressure foot and sew 1/4" seam to the slit.



Raise the pressure foot and tug Piece E and Piece B matching the side stopping after 3 stitches.

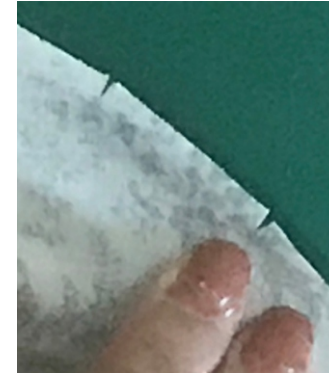
Leave the needle down, stop and raise the pressure foot.

Tug so that the edge of Piece E matches the edge of Piece B. Lower the pressure foot and stitch to the edge.

7. Add Piece E on the other end.



Once fully cut out, pull so you can see the slits.



Helpful Cutting Hints

Use a sharp rotary cutting blade.

Use either a 28 mm or 45 mm rotary cutter blade. Experience suggests that the 28 mm size tends to work better when cutting tighter curves and cutting slits.

Always cut slits away from yourself by putting the rotary cutter on the inside end of the slit and cutting to the edge of the template.

Cut slits must and need not extend inside the 1/4" seam allowance line. This will not occur with use of 28 mm or 45 mm rotary cutter blades.

You are encouraged to experiment with scrap fabric first to see which blade size and cutting technique work best for you along with how many layers of fabric to cut at a time.

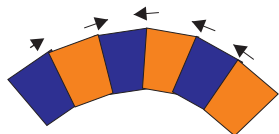
You can use a sharpened pencil or fine tipped marker to mark the slits and use scissors to cut the slits. However, be sure that the marks and cuts do not go inside the 1/4" seam allowance line.

Sewing Directions

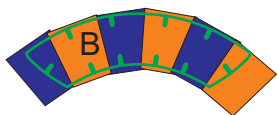


Set stitch length to 1.8.

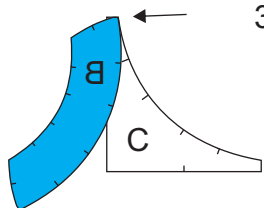
1. Place Piece A right side face up. Place another Piece A right side face down matching the slits. Sew a seam that is exactly 1/4". You need 6 A's sewn together to form a curve.



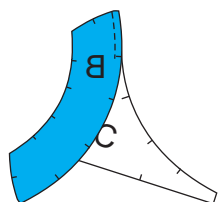
Press seams toward the center as shown.



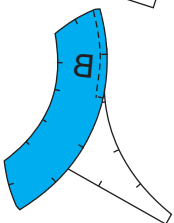
2. Place template B over the sewn pieces making sure the slits do not align with any stitching line. Cut out piece B by cutting out the slits.



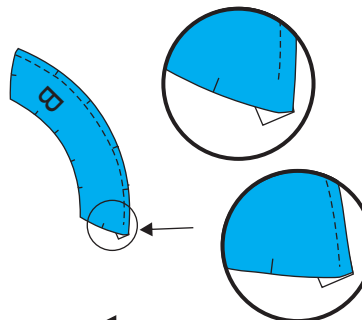
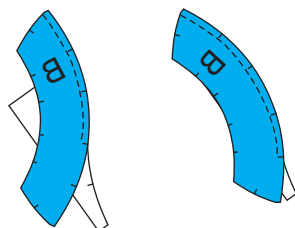
3. Place B right side down to Piece C (right side up) matching the top edges. Start sewing 1/4" seam stopping with needle down after 3 to 4 stitches.



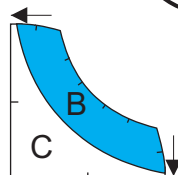
Raise the pressure foot and tug Piece C and Piece B matching the slits. Lower the pressure foot and sew 1/4" seam to the next slit.



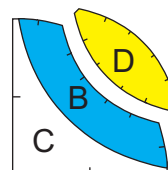
Continue pulling and sewing until you are just past the last slit.



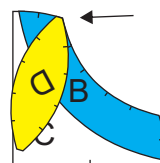
Leave the needle down, stop and raise the pressure foot. Tug so that the edge of Piece C matches the edge of Piece B. Lower the pressure foot and stitch to the edge.



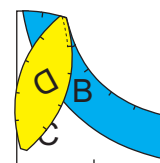
Press to Piece C.



We will now add Piece D.



4. Place D right side down to Piece B (right side up) matching the top edges. Start sewing 1/4" seam stopping with needle down after 3 to 4 stitches.



Raise the pressure foot and tug Piece D and Piece B matching the slits. Lower the pressure foot and sew 1/4" seam to the next slit.



Continue pulling and sewing until you are just past the last slit.

Leave the needle down, stop and raise the pressure foot. Tug so that the edge of Piece D matches the edge of Piece B. Lower the pressure foot and stitch to the edge.