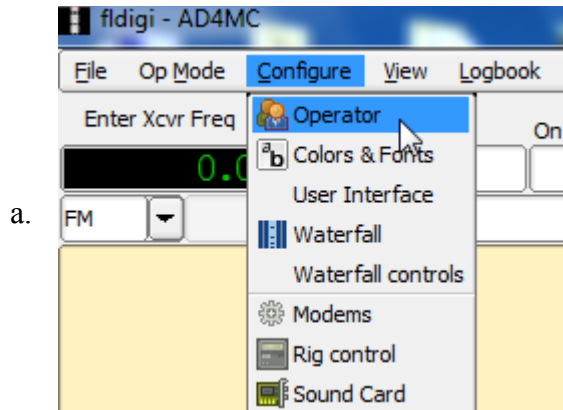
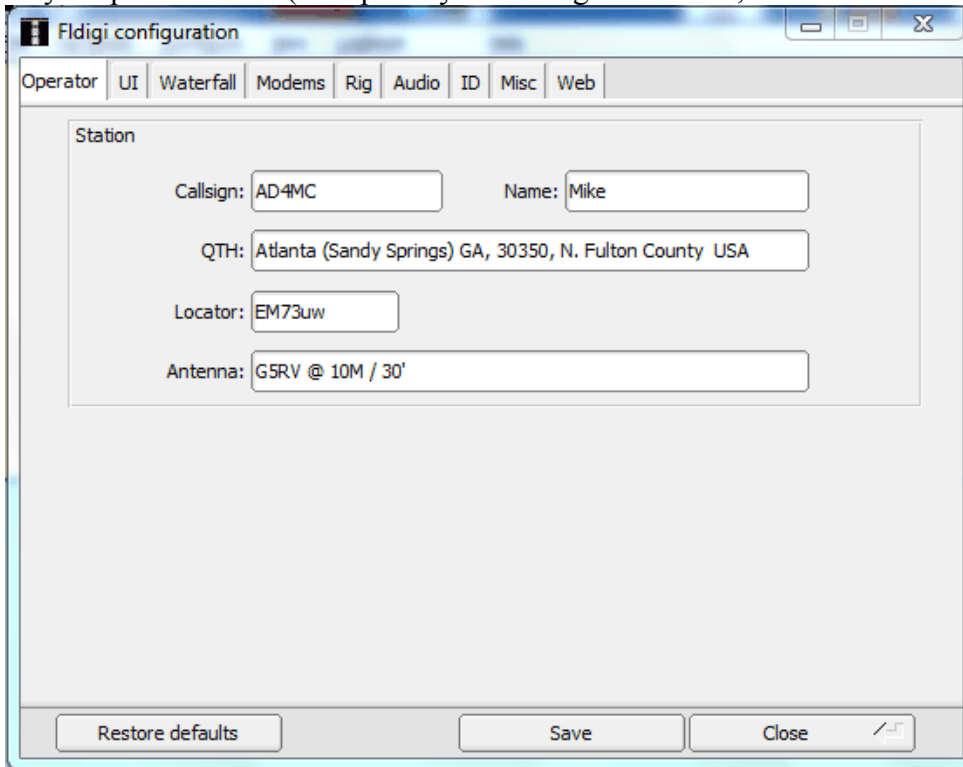


1. Note: Please check for the latest revision date (above) of these instruction. This document will be updated as we progress with our training to correct errors and add additional features.
2. Pages 1-6 cover the setup of Fldigi
3. Pages 7-13 cover the setup of Flmsg
4. Here is the link to download the latest versions of Fldigi, Flmsg and Flwrap. <http://www.w1hki.com/download.html>
5. If you are using Windows, download and install: [fldigi-3.21.56 setup](#), [flmsg-1.1.27 setup](#) and [flwrap-1.3.4 setup](#) Note that flwrap does not require any setup after it is installed.
6. You may want to also download <http://www.w1hki.com/beginners.html>, [fldigi manual](#) and [Fldigi-Help](#)
7. The first thing to do when setting up Fldigi is to enter your Operator information. Click Configure, Operator...

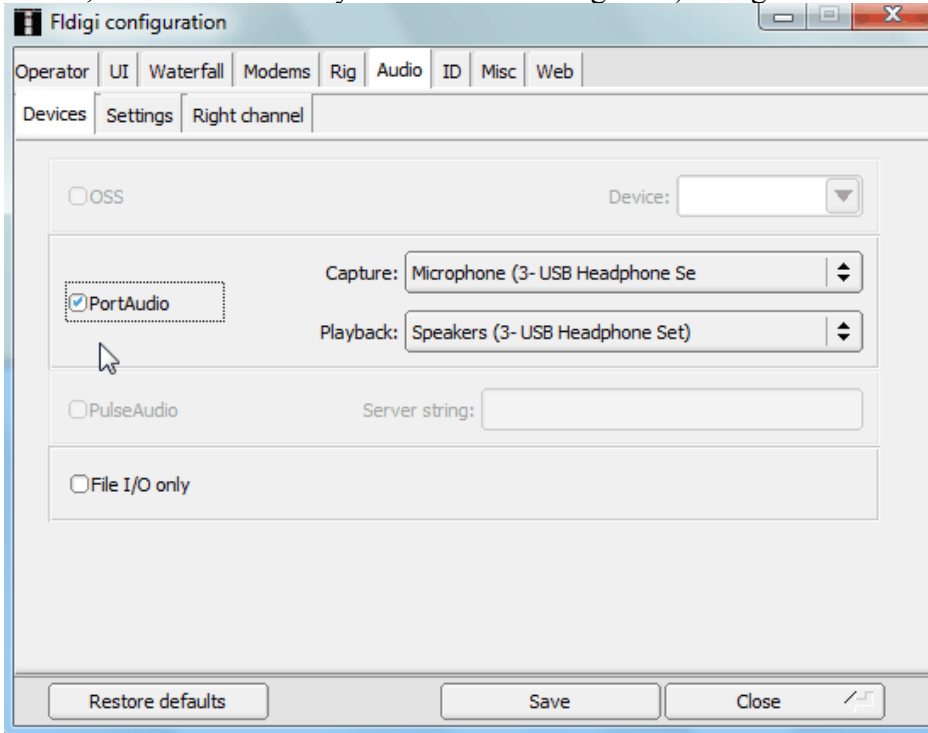


8. then enter your personal info (Except for your callsign and name, enter as much or as little as you want).

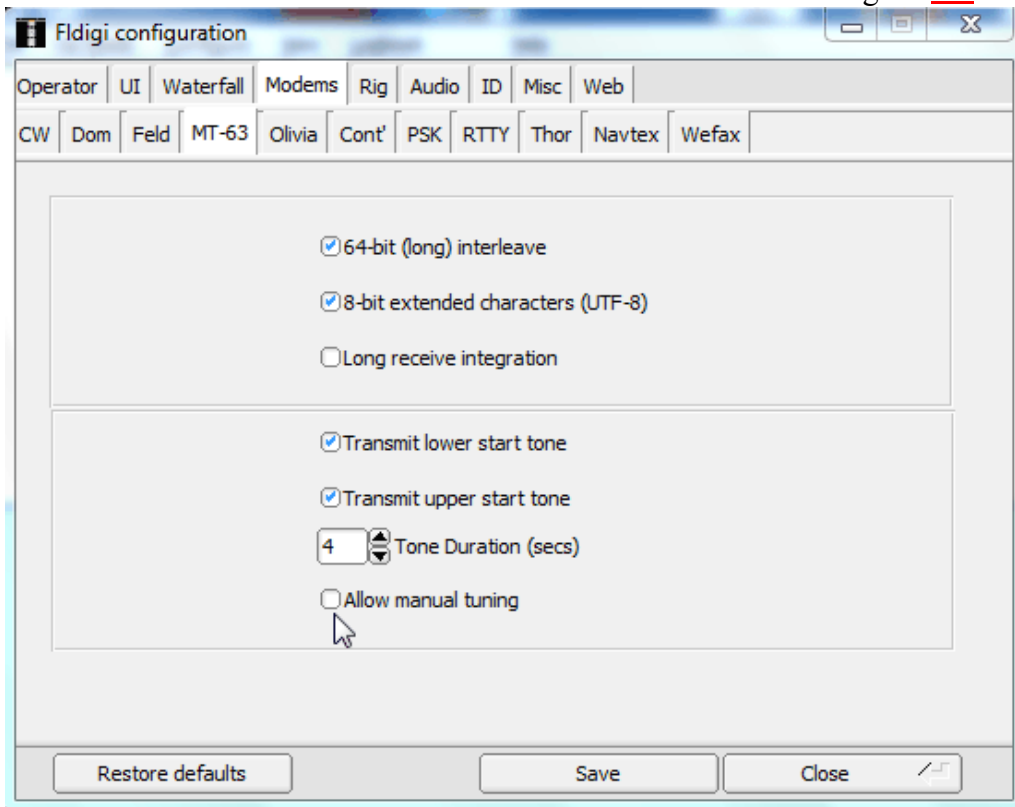


9. Set up your PC soundcard for either acoustic coupling or, if you have one, your sound card interface. (i.e SignalLink). For acoustic coupling, use your PC's default capture and playback devices.

(The ones built into the PC.) Note: Check your Windows settings to make sure your internal mic & speaker are operational. (On a Windows 7 PC, that's Start / Control Panel / Hardware and Sound / Sound, then check the Playback and Recording tabs.) Image below is for a homebrew USB interface.

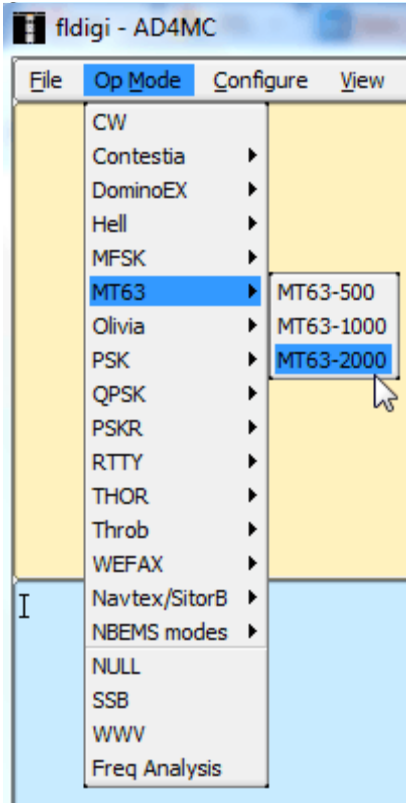


10. Since we will be using MT63-2000, Click on Configure, Modems, MT-63 and check the four boxes as shown below. Make sure that "Allow manual tuning" is *not*

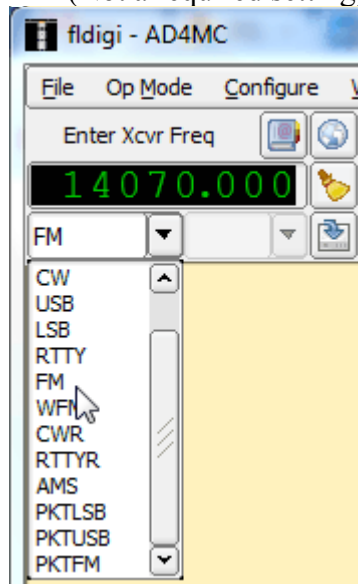


checked.

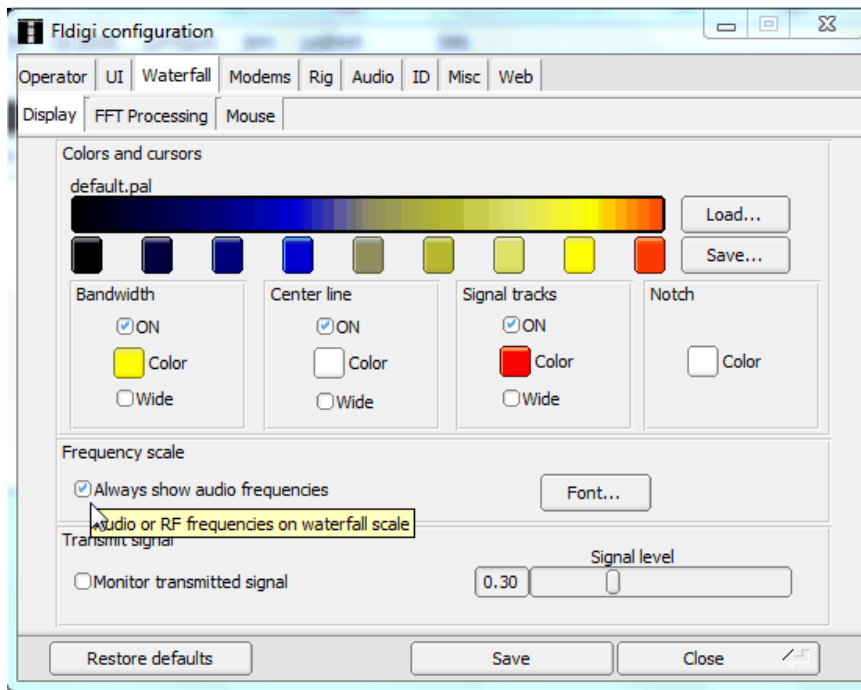
11. Set the Operating Mode to MT63-2000



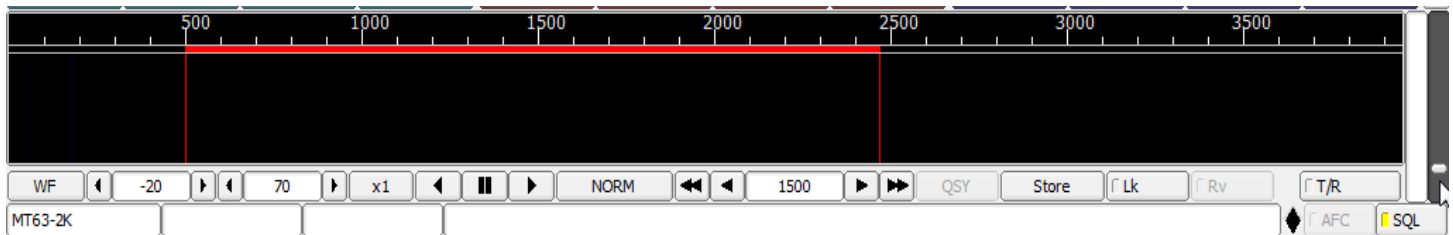
12. Set the Radio mode to FM (Not a required setting)



13. Verify that Configure, Waterfall, Display, Frequency Scale, “Always show audio frequencies” is checked.



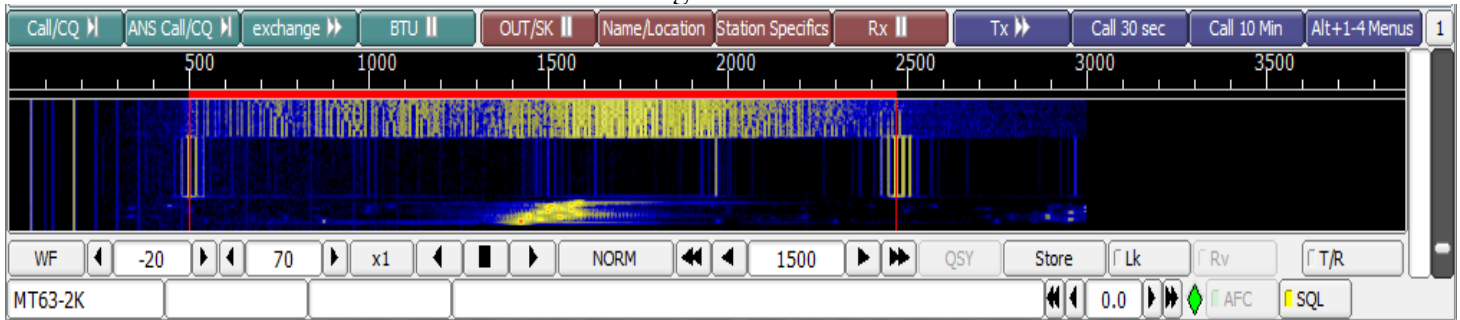
14. Verify that your Waterfall looks like the one below



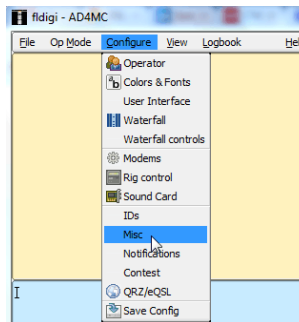
click on “SQL” to get yellow dot  
Move Vertical SQUELCH slider on far right as shown.

**Note that the acceptable squelch setting range is fairly narrow. Setting the vertical slider too low (SQL dot turns green) will allow “garbage” letters to show on the screen and setting it too high will prevent the actual text from being decoded, like the voice squelch on your VHF radio allows noise to be heard when set too low and blocks speech when set too high. Suggest sliding it up from the bottom just to the point where the dot turns yellow.**

Waterfall receiving the beginning of an ICS-213 form:



15. To make sending and receiving flmsg forms easier, make sure that the following setting are as shown:  
Click Configure, Misc...



Then click NBEMS.

Make sure that the four boxes have a blue check

Click on “Locate flmsg” to find the file “flmsg.exe” and double click on that file name.

For Windows 7-64 bit, it will be in C:\Program Files(86)\flmsg-1.1.27

For other versions of Windows, it will (probably) be in C:\Program Files\flmsg-1.1.27

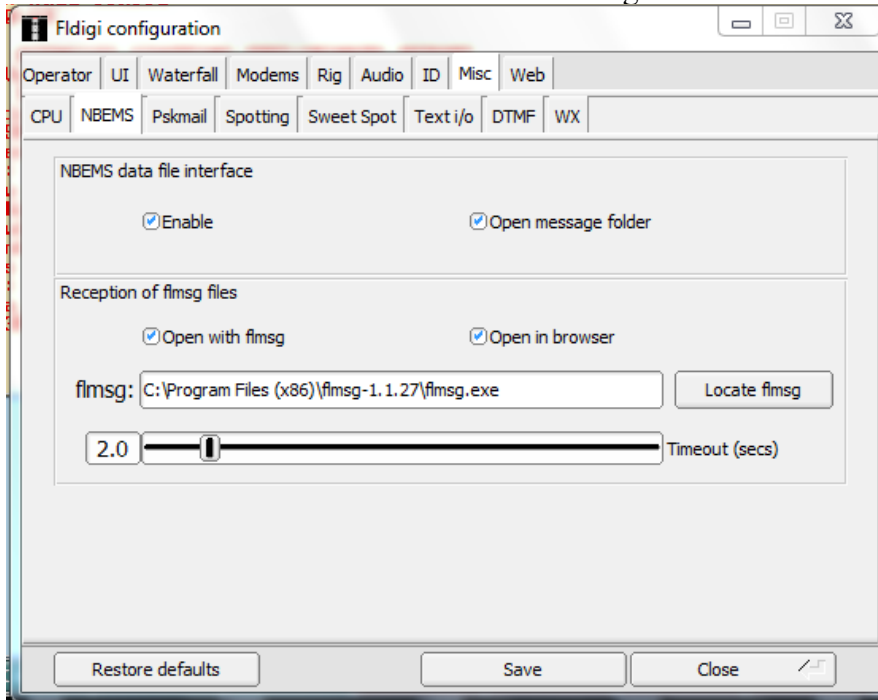
Linux users can contact Garry, AK4NA, [garrettbrass@bellsouth.net](mailto:garrettbrass@bellsouth.net) for installation help.

Mac users should set the flmsg address line as:

`/Applications/flmsg-<version number>.app/Contents/MacOS/flmsg`

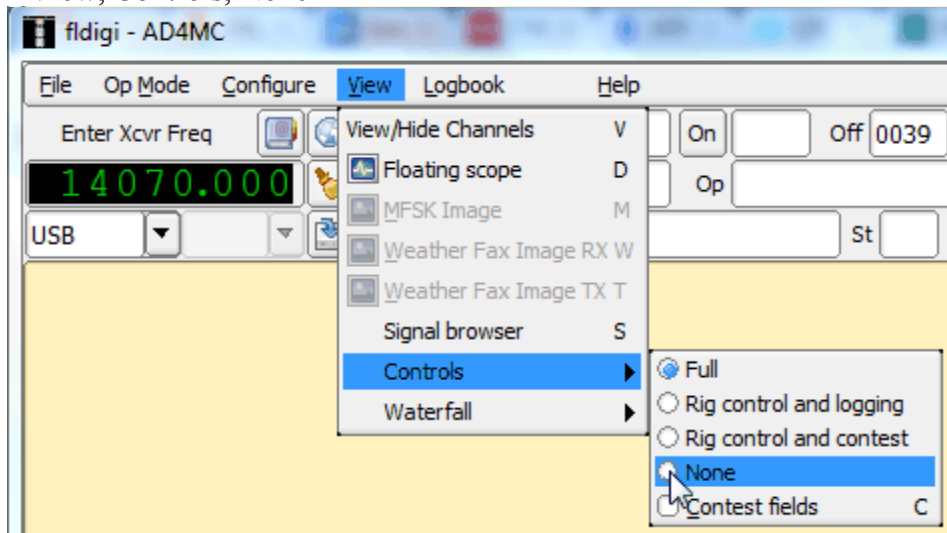
Note that “/Applications/flmsg-<version number>.app” is not sufficient. The full Package Contents location, including “/Contents/MacOS/flmsg” must be included. This is not a location that is normally seen when clicking the 'Locate flmsg' button. It has to be typed or copy/pasted into the address line.

Contact Darren, K4DMN, [dmnelsen@me.com](mailto:dmnelsen@me.com) for questions regarding Mac installation.

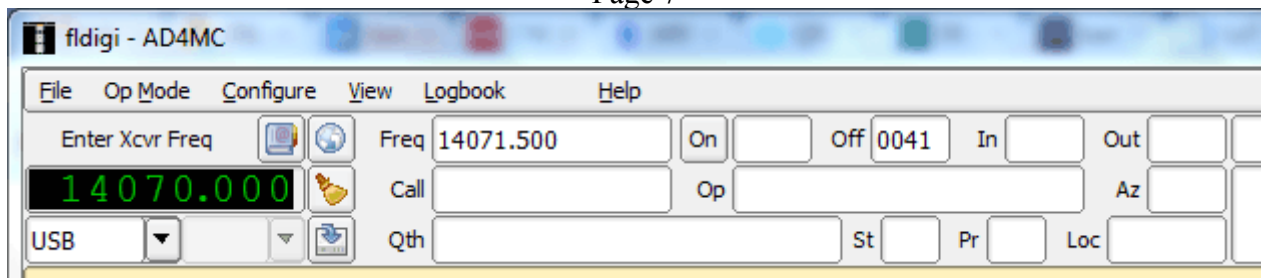


16. Note: Fldigi does a great job of keeping all of your settings when you install a newer version. Just make sure that you save the new icon for fldigi-3.21.56 and delete the old icon because the old icon will still open the older version. The one thing that fldigi is not smart enough to know is if you have updated fmsg. You will have to update the address line to show the latest version of fmsg because fldigi remembers the previous version. In this case, the address line should show fmsg-1.1.27.

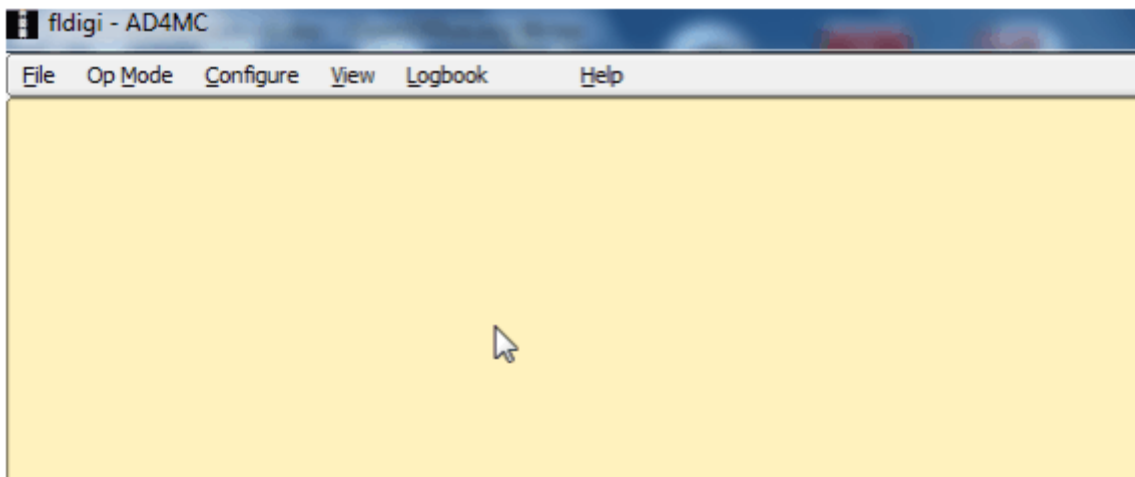
17. The following is optional to create more space in the light yellow received area:  
Click on View, Controls, None



18. That will remove the three rows below "File"



19. to be as below



20. You can get those three rows back again by clicking on View, Controls, Full

**Save your settings when done, before closing the pop-ups, or click “Configure”, then “Save Config”.**

**Flmsg Setup:**

1. Open Flmsg and click on Configure, Personal data
2. Enter your Personal data (Only your callsign is required) and close windows.

Personal data

Call: AD4MC

Tel: 404-981-8624

Name: Mike

Addr: 280 Lackland Ct.

City/St/Zip: Atlanta, GA 30350

close

3. Form, ICS213 will be used for most EmComm work

FLMSG: 1.1.27

File Form Template Config AutoSend Help

ICS-2 Drag-n-Drop file: new.213

Origin ICS ICS203

HICS ICS205

To MARS ICS205A

IARU ICS206

Fm Radiogram ICS213

Sub. Red Cross ICS214

Hurricane Wx ICS216

Date Time

Messa Plaintext

CSV

Blank

Transfer

Sig. Pos.

Comp base64 DOMX22 \*



4. Enter the information into the form. **See Templates starting on page 11.** Note that the Current Date and Local Time in 24-hour format can be entered by clicking on the boxes

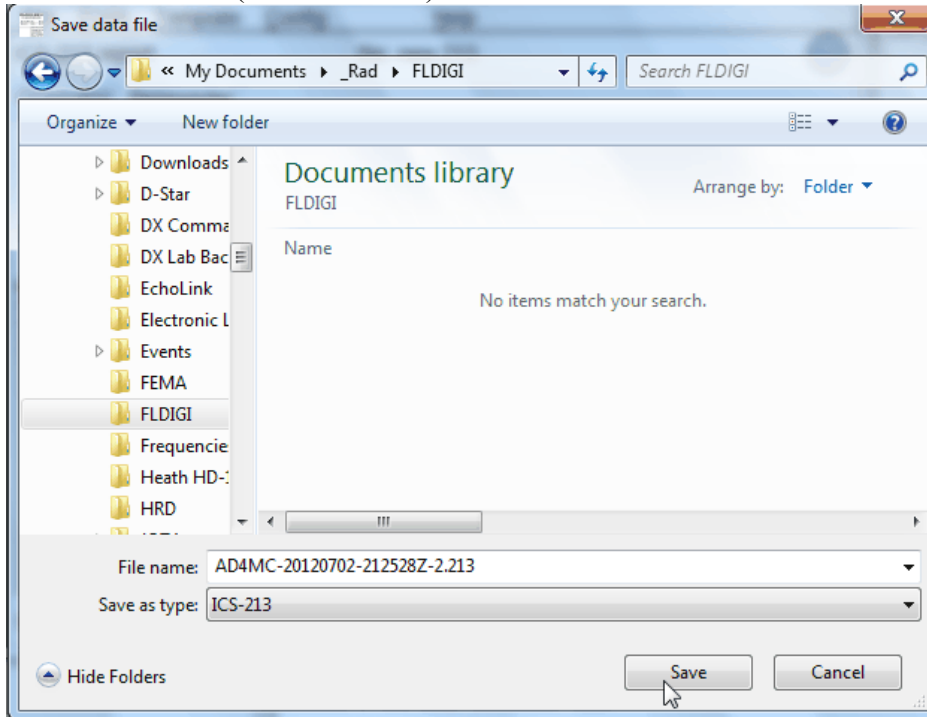
The screenshot shows the FLMSG: 1.1.27 application window. The title bar reads "FLMSG: 1.1.27". The menu bar includes "File", "Form", "Template", "Config", "AutoSend", and "Help". The main window displays an "ICS-213 report" for "file: Sandy\_Springs\_Fire\_Station\_#3.213". Below the menu bar, there are tabs for "Originator" and "Responder". The form contains the following fields:

- To: KK4IZN - James
- Pos: Sandy Springs Shelter - Brandon Hall
- Fm: KG5WU - Wayne
- Pos: Sandy Springs Fire Station #3
- Sub: NFARES SET
- Date: 2012-10-14 (with a calendar icon)
- Time: 1523L (with a clock icon)
- Message: THIS IS ONLY A DRILL  
DO YOU HAVE THE CAPACITY TO RECEIVE ANOTHER 50 VICTIMS?  
THIS IS ONLY A DRILL
- Sig: KG5WU - Wayne
- Pos: Sandy Springs Fire Station #3
- Encoding:  Comp base64
- Mode: DOMX22
- Size: \* 516 bytes / 1 m 5 s

with "...".

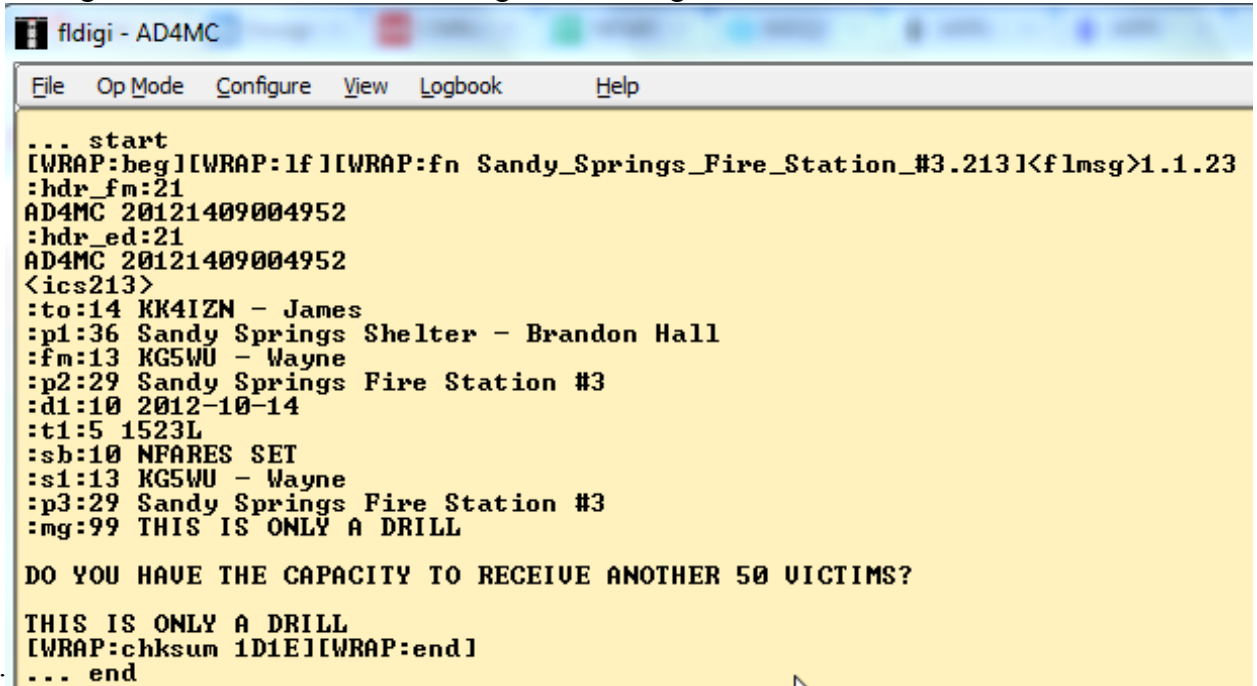
5. **Update the Time**, then Transmit the message form by clicking AutoSend
6. Note: Fred, KK4JYO, was not able to use AutoSend until he disabled his Zone Alarm Firewall. We are not recommending the disabling of any firewall. For the particular firewall that you are using, there should be a firewall setup change to allow Flmsg to call Fldigi to send your message, but the method to do that is beyond the scope of this training.

7. You will be asked for a place to save the Form file. I have created an Fldigi folder, but you can accept the default folder (recommended) or choose another.



Note: Screen below has not been updated from flmsg-1.1.23

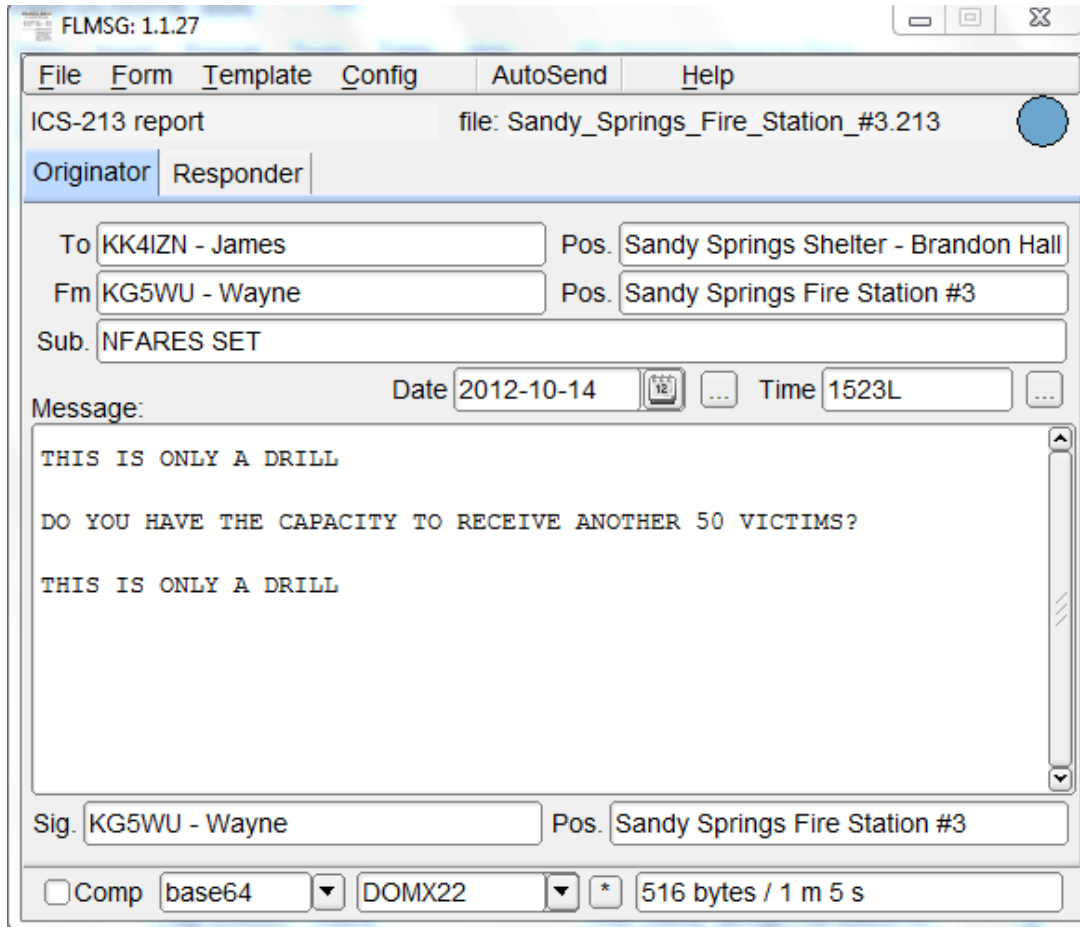
8. The receiving station should see the following in their Fldigi screen similar to the one



```
... start
[WRAP:begin][WRAP:lf][WRAP:fn Sandy_Springs_Fire_Station_#3.213]<flmsg>1.1.23
:hdr_fm:21
AD4MC 20121409004952
:hdr_ed:21
AD4MC 20121409004952
<ics213>
:to:14 KK4IZN - James
:p1:36 Sandy Springs Shelter - Brandon Hall
:fm:13 KG5WU - Wayne
:p2:29 Sandy Springs Fire Station #3
:d1:10 2012-10-14
:t1:5 1523L
:sb:10 NFARES SET
:s1:13 KG5WU - Wayne
:p3:29 Sandy Springs Fire Station #3
:mg:99 THIS IS ONLY A DRILL
DO YOU HAVE THE CAPACITY TO RECEIVE ANOTHER 50 VICTIMS?
THIS IS ONLY A DRILL
[WRAP:checksum 1D1E][WRAP:end]
... end
```

below:

9. then the ICS-213 form



FLMSG: 1.1.27

File Form Template Config AutoSend Help

ICS-213 report file: Sandy\_Springs\_Fire\_Station\_#3.213

Originator Responder

To: KK4IZN - James Pos: Sandy Springs Shelter - Brandon Hall

Fm: KG5WU - Wayne Pos: Sandy Springs Fire Station #3

Sub: NFARES SET

Date: 2012-10-14 Time: 1523L

Message:

THIS IS ONLY A DRILL

DO YOU HAVE THE CAPACITY TO RECEIVE ANOTHER 50 VICTIMS?

THIS IS ONLY A DRILL

Sig: KG5WU - Wayne Pos: Sandy Springs Fire Station #3

Comp base64 DOMX22 \* 516 bytes / 1 m 5 s

10. followed by an HTML popup in your Web

GENERAL MESSAGE (ics-213)		
TO: KK4IZN - James	POSITION: Sandy Springs Shelter - Brandon Hall	
FROM: KG5WU - Wayne	POSITION: Sandy Springs Fire Station #3	
SUBJ: NFARES SET	DATE: 2012-10-14	TIME: 1523L
MESSAGE:		
<p>THIS IS ONLY A DRILL</p> <p>DO YOU HAVE THE CAPACITY TO RECEIVE ANOTHER 50 VICTIMS?</p> <p>THIS IS ONLY A DRILL</p>		
SIGNATURE: KG5WU - Wayne		POSITION: Sandy Springs Fire Station #3

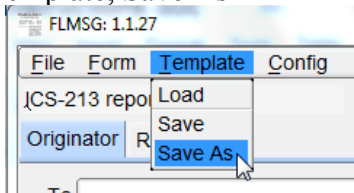
Browser

**Templates:**

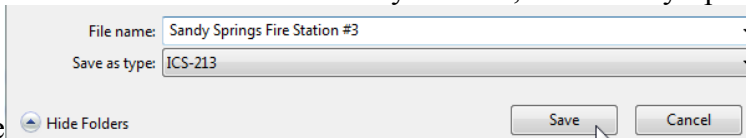
Templates enable you to pre-set up your ICS-213 Forms with all the data that will be repeated in each message.

11. Fill in an ICS-213 Form with the information that will be used in every message that you will be using during the activity. A “Time” is entered in the 24-hour Local format as a reference, but **it must be edited for each message just before it is sent.** See item 4 as an example of a completed form.

12. Click Template, Save As



13. Use the default file name or create your own, like “Sandy Springs Fire Station #3” and click

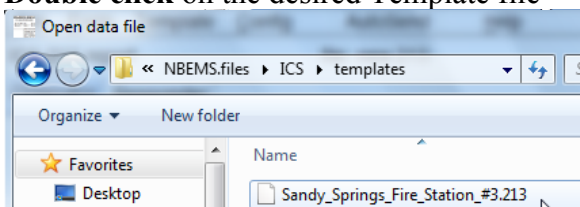


Save

14. Whenever you want to create a new message, start with this “template” (master ICS-213 form).

15. From the ICS-213 form, click Template, Load

16. **Double click** on the desired Template file

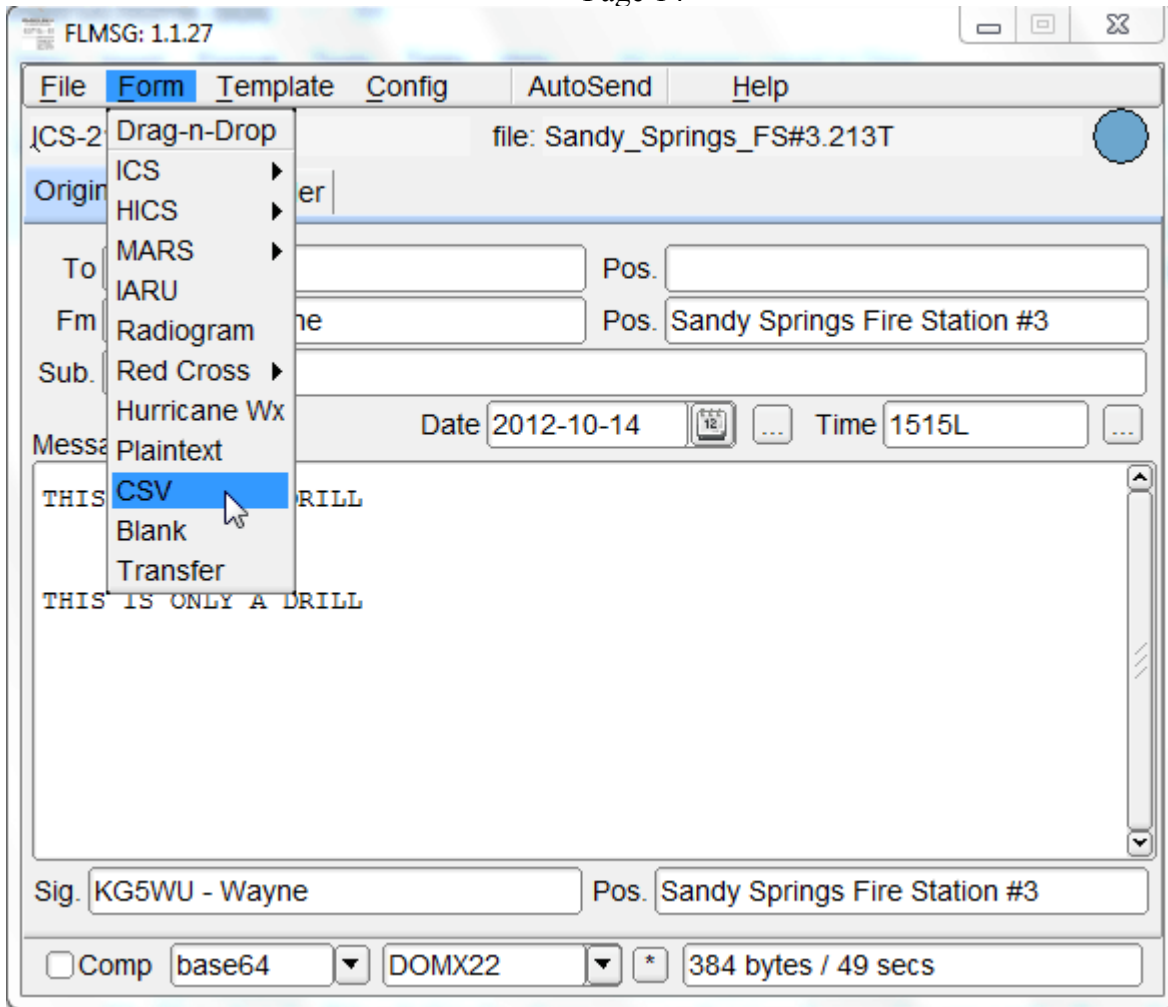


17. Your master file will be opened and you can then enter the additional message

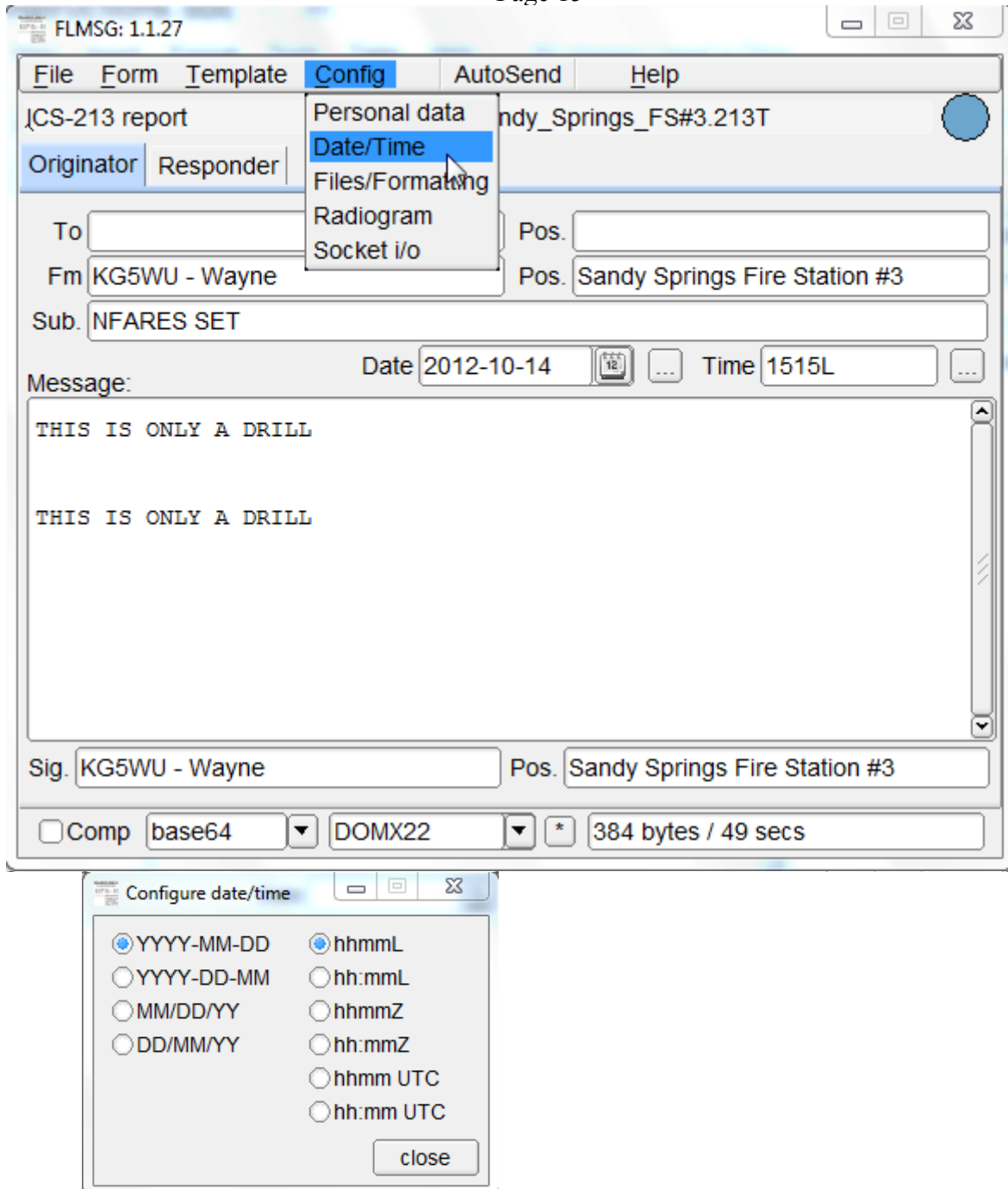
The screenshot shows the FLMSG: 1.1.27 application window. The title bar reads "FLMSG: 1.1.27". The menu bar includes "File", "Form", "Template", "Config", "AutoSend", and "Help". The main area displays "ICS-213 report" and "file: Sandy\_Springs\_FS#3.213T". Below this are two tabs: "Originator" (selected) and "Responder". The "Originator" tab contains several input fields: "To" (empty), "Pos." (empty), "Fm" (KG5WU - Wayne), "Pos." (Sandy Springs Fire Station #3), and "Sub." (NFARES SET). A "Message:" section shows a date of "2012-10-14" and a time of "1515L". The message content area contains two lines of text: "THIS IS ONLY A DRILL". At the bottom, there are fields for "Sig." (KG5WU - Wayne) and "Pos." (Sandy Springs Fire Station #3). A status bar at the very bottom shows "Comp" (unchecked), "base64" (selected), "DOMX22" (selected), and "384 bytes / 49 secs".

information

- 18. **Update the Time before sending it.**
- 19. See Item 4 as an example.
- 20. There are additional Forms that we will be using, "Blank" and "CSV".



21. Note that the "blue dot" in the above screen shot is a drag-n-drop target for flmsg-formatted files.
22. Set the Date/Time format to YYYY-MM-DD and hhmmL



Contact Mike - AD4MC, [ad4mc.mike@gmail.com](mailto:ad4mc.mike@gmail.com) with questions.  
Thanks to Wayne-KG5WU, Wayne-W4CJV, Garry-AK4NA, Darren-K4DMN and Fred-KK4JYO for their contributions to this document.