

DR. CHANDLER AND JANE PARIS SMITH OPERA SERIES

The Magic by Mozart Flute

April 7-9, 7:30 p.m., April 10, 2:30 p.m.
Harrison Theatre



2021-22
SEASON

SAMFORD
Arts



Find artistry with soul

at Samford's School of the Arts
Division of Music

Samford University offers undergraduate and graduate degrees in composition, commercial music, music education, music and worship, instrumental, piano and voice performance, and piano performance and pedagogy.

Scholarships Available

arts@samford.edu
205-726-4111
samford.edu/arts



Samford University
School of the Arts

Samford University is an Equal Opportunity Educational Institution/Employer.

CHAIR'S NOTE

Welcome back, in person, to live theatre, with the Department of Theatre & Dance 2021-22 season of performances. Especially this year, the opportunity to be with one another in a theatre is a time to be cherished.

And welcome to the newly renovated Harrison Theatre. We hope you enjoy the improved sightlines and acoustics of the theatre, and the increased accessibility and safety features which accompany them. And, of course, the comfy seats...

Given the challenges it takes to put on any theatre performance, we're particularly proud this year to be able to bring you a full season of diverse experiences from dance to drama, from opera to children's theatre.

If it takes a village to raise a child, then it takes a community to put on a theatre production, and each hour of stage time in this season is the product of thousands of hours of backstage time in rehearsal, editing blocking, choreography and combat, practicing music, building and painting scenery, cutting and sewing costumes, cabling and focusing lights, adjusting audio levels, and building props. Every student in our department participates in the creation of the season, and they do it all so that collectively we can come together to share our world in all its complexity and, as Sanford Meisner puts it, "to live truthfully in imaginary circumstances."

Two years ago, a group of students came together to advocate for increasing diversity in our presentations across the School of the Arts. With the support and encouragement of administration they created a Diversity Series, featuring contributions from all arts areas. Our second show of the season, *Crumbs from the Table of Joy*, by Pulitzer Prize-winning playwright Lynn Nottage, and featuring collaboration with Miles College, is the first product of that work on our mainstage theatre season.

Our season began with the beloved classic children's story, *The Wind in the Willows*, a perfect example of how your friends can become your family. To round out our fall, and welcome in the holiday season, we presented for the first time in our history, Dickens's *A Christmas Carol*, the joyous celebration of the possibility of redemption. "God bless us every one!"

By contrast, our spring begins in serious territory, as we contemplate the horrendous consequences of prejudice and discrimination in the documentary play, *The Laramie Project*. Designed to engender discussion, this play asks us to examine our hearts and question our motives, and we hope you join us for the talkbacks

(continued on next page)



CHAIR'S NOTE

after each show. The spring continues with *re/vise*, a dance concert premiering four new pieces choreographed by people of color. Members of the Samford Dance Company will also perform pieces inspired by important historical events and influential people, such as the Declaration of Human Rights, Martin Luther King, Jr., and the Freedom Rides of the Civil Rights Movement. Our season ends in another collaboration, this time with Samford Opera and the Division of Music, to present the mystical world of Mozart's *The Magic Flute*.

From light to dark, from hope to the darkest depths of despair, these are all human experiences that can be redeemed through faith. We hope that you join us, engage with us, and experience the full joy of live theatre!

Cheers,
Mark Castle
Chair of Theatre & Dance



DIRECTOR'S NOTE

Greetings and welcome to Samford Opera and the School of the Arts! It is our joy to present Mozart's shining jewel of the operatic repertoire, *The Magic Flute*! Written in 1791 by Mozart with a German libretto by Emanuel Schikaneder, the opera has remained one of the most performed, most loved operas of all time. *The Magic Flute* is an allegorical fairytale where truth and light triumph over lies and darkness. Part lowbrow comedy and part noble mysticism, the work is a singspiel — a German theatrical style that alternates between song and dialogue much like American musical theatre. While some moments of the opera reflect the professional ideas of Enlightenment philosophy, other moments are surely meant to entertain. The opera starts with Prince Tamino journeying to a strange land where he immediately is attacked by a giant serpent — best start of an opera, ever! Tamino is soon asked to save the Queen of the Night's daughter, Pamina, who has been taken by Sarastro (King of the Sun). As Tamino and Pamina search for each other, their bravery and virtue are tested, and they gain knowledge that causes them to more clearly discern between good and evil. Along the way they meet Papageno (a bird-like bird-catcher), three ladies (agents of the Queen of the Night), three boys (unruly sages), Monostatos (a corrupt tyrant), and many magical creatures and priests of the sun. Our production includes four students in "pants" roles — male characters who are played by women.

The last show Samford Opera performed on Samford's campus was *The Ghosts of Gatsby* in 2018. We attempted to perform *Into the Woods* twice during the pandemic and succeeded in partnering with Opera Birmingham to perform *The Pirates of Penzance* outdoors in 2021. To be back in the theatre... feels both like a return home and a thrilling, precious opportunity. The students in this cast, crew, and orchestra have thrown themselves into the process of creating *The Magic Flute* with joy and thankfulness, taking nothing for granted. Thank you for being with us tonight to support these young artists and to be a part of live theatre!

This joint production between the Division of Music and the Department of Theatre and Dance exemplifies the type of artistic collaboration that makes Samford a vibrant place for arts education and artistic collaboration. My heartfelt thanks go out to all who participated in the production. And a special thanks to Dr. Chandler and Jane Paris Smith for providing the funding that makes the opera season possible.

Enjoy the show!

Kristin Kenning
Director Samford Opera



Dr. Chandler and Jane Paris Smith Opera Series

Presents

The Magic Flute

By Mozart

April 7-10, 2022

Harrison Theatre

English translation by Andrew Porter
Used by arrangement European American Music
Distributors Company, U.S. and Canadian agent
for Faber Music Ltd., London, publisher
and copyright owner.



CAST LIST

Thursday and Saturday Performances

Tamino Grayson Johns
Papageno Blake Mitchell
Pamina..... Christina Ledbetter
First Lady Emily Weaver
Second Lady Alex Cook
Third Lady Sarah Giadrosich
Papagena..... Annabelle King

Friday and Sunday Performances

Tamino Joseph Robinson
Papageno Sam Phillips
Pamina..... Tessa Brown
First Lady Caitlyn Rodrigue
Second Lady Kelsey Wade
Third Lady Heather Thaxton
Papagena..... Shelbea Fordham

All Performances

Sarastro Nathan Herring
Monostatos..... DeLee Benton
Queen of the Night..... Louisa Smith
First Boy..... Margaret Kirby
Second Boy Sam Riggs
Third Boy..... Libby Criswell
First Priest Matthew Reber
Second Priest Brandon Szep
First Guard..... Carter Nelson
Second Guard Ryan Hanrahan

Ensemble:

Maddie Athearn
Maddie Jayne Austin
Hallie Barnwell
Bianca Fasanelli
Gabriella Fontana
Ryan Hanrahan
Benjamin Harding*
Katie King

Valeria Machuca
Mallory McKinney
Carter Nelson
Katelyn Ortiz
Adreanna Pulliam
Brandon Szep
Emeline Thornton

*Appears by permission of Actors' Equity Association, the union of professional Actors and Stage Managers in the United States.



ARTISTIC STAFF & CREW LIST

Stage Director..... Kristin Kenning
 Conductor Brian Viliunas
 Scenic Designer David Glenn
 Costume Designer..... McKenna Varner
 Lighting Designer..... Tollie Boone
 Hair/Makeup Designer..... Stephanie Leary
 Assistant Lighting Designers Sarah Robbins, Jackson Wood
 Props Designers & Artisans..... Braydie Aldrich, Kirsten Erickson,
 Patrick Ingram, Caitlyn Rodrigue, Sam Riggs,
 Anna Stevens, Emily Weaver
 Assistant Director..... Rachel Harris
 Production Stage Manager..... Joseph Robinson
 Stage Manager Ansley Burnette
 Assistant Stage Managers..... Rachel Harris, Lillian Ross
 Choreographer..... Alisa McCool
 Costume Design Instructor..... Mary Gurney
 Lighting Design Instructor..... Christian Specht
 Scenic Charge Artist..... Christopher Crews
 Props Design Instructor..... Ann-Houston Campbell
 Costume Shop Manager..... Marilyn Locke
 Rehearsal Pianist..... Sebastian Black
 Light Board Operator..... Meredith Warren
 Sound Crew..... Zoe Clark, Gracen Fisk, Gracie Abee,
 Sadie Sue Long, Lucy Hail
 Supertitles Operator Millie Evans
 Costume/Hair/Makeup..... Isabella Blohme, Majorie Castro Arias,
 Emily Hankinson, Brianna Harding, Avery Minotti,
 Olivia Sundberg, Alexis Wentworth
 Head of Props Rachel Bass
 Props Crew Brooke Bott
 Spot Operators Camden Popadic, Goldie Hatch,
 Antoinette Gilas, Katie Schansberg
 Deck Electrician..... Hannah Hicks
 Stage Crew Egypt Davis, Charlotte Godat, Trevor Miller
 House Manager..... Ava Williams
 Ushers Trent Carruth, Lucy Blaylock, Caroline Copeland

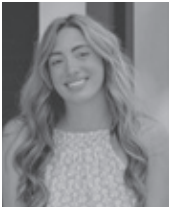


ORCHESTRA LIST

Violins..... Rebekah Willard, Adam Moore, Karalyn Harper,
 Liliana Hatch, Anna Rose Honea, Allison Frederick
 Viola..... Lydia Moore, Taylor Chapman
 Cello Donny Snyder
 Bass..... Lisa Smith
 Flute Lee Ann Ashworth, Alexis Boatright
 Oboe Greg Lucero
 Clarinet Rebekah Lamb
 Bassoon..... Sam Gravlee
 Horn Kerrig Kelly, Matthew Lad
 Trumpet..... Paul Morton, Murray Johnson
 Timpani..... Edward Garner
 Keyboard Kayla Magnus



CAST & CREW BIOGRAPHIES



Maddie Athearn is a freshman musical theatre major from Niceville, FL. Her previous performance credits include *A Christmas Carol* (Ensemble), *Annie* (Lily St. Regis), *Singin' in the Rain* (Kathy's Girl/Ensemble), *Fame* (Carmen Diaz), *Hairspray* (Ensemble), *The Hiding Place* (Corrie Ten Boom), and *Annie Get Your Gun* (Ensemble).



Maddie Jayne Austin is a senior music theatre major from Huntsville, AL. Maddie Jayne has recently been seen as Kathy in *Vanities the Musical* (Samford) and as the Show Host at *It's Tough To Be A Bug!* (Disney World).



Hallie Barnwell is a freshman theatre for youth major from Charlotte, NC. This is her first Samford Mainstage production and she is so excited for this opportunity to perform aerial silks in Harrison Theatre. Her previous experience includes *Into the Woods* (Little Red Ridinghood), *The Phantom of the Opera* (ballet corps/ensemble), and *Tarzan* (silk artist/acrobat/ensemble).



DeLee Michiko Benton is a member of the Opera Birmingham Studio at Samford University, pursuing her master's degree in vocal performance. She graduated from the University of Montevallo in 2020 with a degree in music education. A few of her past credits include *The Marriage of Figaro* (Susanna), *The Three Little Pigs* (Despina Pig), and *Trouble in Tahiti* (Girl). She plans to perform in the upcoming Opera Birmingham production of *La Boheme* in April, and in Birmingham Music Club's production of *The Merry Widow* this June.



Tollie Boone (Lighting Designer) is a junior technical theater major from Nashville, TN. Her concentration is Lighting Design and her previous main stage design credits include *The Laramie Project*, *Little Women*, and *Crumbs from the Table of Joy*.



CAST & CREW BIOGRAPHIES

Tessa Brown is a senior vocal performance major from Trussville, AL. Tessa's previous credits in Samford's Opera Workshop include *Marriage of Figaro* (Susanna), *With Blood with Ink* (Sor Juana), and *Il Matrimonio Segreto* (Carolina). Tessa has also performed with Opera Birmingham in Massenet's *Cendrillon* (ensemble) and *Pirates of Penzance* (Edith). She has plans to participate in Opera Viva's young artist program in Verona, Italy, this summer.



Ansley Burnette (Stage Manager) is a senior double major in theatre and English with a concentration in film studies. She has been seen onstage in *Tinkerbell* (Nana/Crocodile/Twin) and *The Wind in the Willows* (Weasel) and is excited to end her Samford theatre experience in the tech booth during *The Magic Flute*. Select stage management credits include *The Prisoner's Friend*, *Circle Mirror Transformation*, *Gruesome Playground Injuries*, *Apollo: To the Moon*, and *The Giver*.



Alex Cook is a sophomore music education major from Brentwood, TN. Her previous Samford performance credits include Samford Opera Scenes (Hansel from *Hansel and Gretel*, Dorabella from *Così fan tutte*, and Ensemble from *Elixir of Love*).



Libby Criswell is a sophomore double major in music (cello performance) and religion from LaGrange, GA. She plays with the Samford Orchestra, including the pit orchestra for Samford's production of *A Christmas Carol*, and chamber ensembles. In addition, Libby sings with Samford's A Cappella Choir and the Vestavia Hills Baptist Church Choir. She is also a member of Samford's Pre-Ministerial Scholars Program.



Bianca Fasanelli is a freshman vocal performance and biochemistry major from Ponte Vedra Beach, FL. Her previous performance credits include *Chicago* (Velma), *Sister Act* (Tina/Ensemble), and *Footloose* (Ensemble).



CAST & CREW BIOGRAPHIES



Gabriella Fontana is a sophomore bachelor of the arts voice major and marketing minor from Naples, FL. Her previous credits include Interlochen Arts Academy operas and opera scenes from *Cendrillon* (Dorothee), *Hansel und Gretel* (Hansel), *Carmen* (ensemble), *L'elisir d'amore* (ensemble), and *Riders to the Sea* (ensemble). She has also previously performed with Interlochen Arts Camp, ArtsBridge Summer Camp, and internationally with Bel Canto in Florence. Gabriella is one of the aerialists in the *The Magic Flute*.



Shelbea Fordham is a graduate vocal performance major from Macon, GA. During her time in Birmingham, she has performed with Opera Birmingham as Kate in *Pirates of Penzance*, Samford University Jazz Band, CharACTers Theatrics as Bea in *Something Rotten!*, and Samford Opera. Upcoming engagements include the Young Artist Program OperaViva in Verona and performing in London at St. Paul's Cathedral with the Cathedral Church of the Advent Choir.



Sarah Giadrosich is a sophomore composition major and psychology minor from Birmingham, AL. Previous credits include Samford Opera Scenes (Third Lady from *The Magic Flute*; Giannetta from *The Elixir of Love*) and *Amahl and the Night Visitors* (Mother). She is also a member of the A Cappella choir at Samford.



Ryan Hanrahan is a masters of music education student from Hoover, AL. Ryan is an active member in the A Cappella Choir at Samford, and the Eternal Word Television Network, where he sings in the choir for Daily Mass.



Benjamin Harding is a sophomore musical theater major from Atlanta, GA. Some of his previous work includes *A Christmas Carol*, *Wind and the Willows*, and *Little Women* here at Samford, as well as *Matilda: The Musical* on Broadway, National Tour of *Elf: The Musical*, *James and the Giant Peach*, and *Zorro, The Musical* at the Alliance Theater in Atlanta.



CAST & CREW BIOGRAPHIES

Rachel Harris (Assistant Director) is a junior musical theatre major from Granite Bay, CA. Her previous Samford main stage credits include: *A Christmas Carol* (Mrs. Fezziwig) and *Little Women* (Meg). She is currently in the rehearsal process of directing a show for Samford's one-act festival.



Nathan Herring is a freshman music composition major from Atlanta, GA. He is currently a member of the Samford A Cappella Choir where he sings Bass 2. Nathan has also written a string quartet that was performed by fellow students and is working on a variety of other creative works.



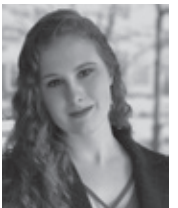
Grayson Johns is a junior musical theatre major from Florence, AL. He has had the honor of playing Jack in *Into the Woods*, Laurie in *Little Women*, and the Ghost of Jacob Marley in *A Christmas Carol*.



Kristin Kenning (Stage Director) is an associate professor at Samford University, where she teaches voice and directs the opera program. Recent productions include *The Ghosts of Gatsby*, *The Marriage of Figaro*, *Hansel and Gretel*, and *On the Town* for Samford Opera; *The Pirates of Penzance* and *The Three Little Pigs* for Opera Birmingham; *Il matrimonio segreto* and *La Canterina* for Mobile Opera; *The Ghosts of Gatsby* for the OPERA America New Works Forum and Seagle Music Colony; and *Naughty Marietta*, *The Desert Song*, and *Die Fledermaus* for the Birmingham Music Club. Upcoming projects include directing for Opera Viva in Italy.



Annabelle King is a senior vocal performance major from Prestonsburg, KY, and a voice student of Sharon Lawhon. She was a semi-finalist in the 2018 Alabama Chapter of the National Association of Teachers of Singing auditions, performed the world premiere of *A Function of a Thing* by Andrew Bass, and has performed with Opera Birmingham in their production of Gilbert and Sullivan's *Pirates of Penzance*. This summer, she has been invited to participate in Opera Viva in Verona, Italy.



CAST & CREW BIOGRAPHIES



Katie King is a freshman vocal performance major from Livonia, MI. Some of her past credits include *Beauty and the Beast* (Belle) and *Chicago* (Mary Sunshine). She has also participated in the Interlochen Arts Camp and sings in the Samford A Cappella Choir.



Margaret Kirby is a senior studying English, classics, and philosophy. She is a member of Sigma Tau Delta and also sings in the A Cappella Choir. This is her first Samford production, and she's so excited for the opportunity!



Christina Ledbetter is a senior musical theatre major from Knoxville, TN. Her previous Samford main stage credits include *A Christmas Carol* (Ghost of Christmas Past), *Little Women* (Beth), *Into the Woods* (Cinderella), and *1776* (John Hancock). Currently, she is the Samford Underground committee artistic director and directing *Vanities: The Musical*.



Val Machuca is a freshman voice performance major from Mexico City, Mexico. Her previous main stage experience includes *A Christmas Carol* (ensemble), *Joseph and his Amazing Technicolor Dreamcoat* (Narrator), *My Fair Lady* (Eliza), and *The Wiz* (Wicked Witch of the West). She has also performed at Mexico's City Theatre and served as company manager for the TJ Musical Theatre Company and Spiral productions.



Mallory McKinney is a junior musical theatre major from Knoxville, TN. Some of her recent credits include *The Mad Ones* (Beverly), *A Christmas Carol* (Mrs. Mops/Ensemble), *Blue Yonder* (Woman 2), *The Boy Who Stole the Stars* (Bessie), and *Anything Goes* (Reno Sweeney).

CAST & CREW BIOGRAPHIES

Blake Mitchell is a graduate student from Montgomery, AL, currently studying music education upon completing undergraduate studies in vocal performance at Samford. Recent credits include *A Christmas Carol* (Bob Cratchit), *Little Women* (Professor Bhaer), *Into the Woods* (Baker), *Freaky Friday* (Mike), the world premiere of *The Ghosts of Gatsby* (Scott), *Children of Eden* (Shem), *1776* (Bartlett), and *Lucinda...Nochebuena* (Everybody) at Samford; and *My Fair Lady* (Quartet/Freddy US) at Red Mountain Theatre.



Carter Nelson is a vocal performance major from Rome, GA. He has recently appeared in *A Christmas Carol* as Mr. Fezziwig at Samford.



Katelyn Ortiz is a sophomore theatre for youth major from Miami, FL. Her Samford credits include *Spooky Dog* (Assistant Director) and *A Christmas Carol* (Ensemble). Her favorite roles include *West Side Story* (Maria), *The Sound of Music* (Liesl), and *Little Women* (Beth) with Standing Ovation Theatre. She has trained with UNCSA, AMDA, FSU, and has been a recipient of the Andrew Lloyd Webber American Theatre Wing Training scholarship for two years.



Sam Phillips is a junior vocal performance major from Tulsa, OK. He is making his Samford main stage debut in *The Magic Flute* and will perform in Birmingham Music Club's upcoming production of *The Merry Widow* in June. He has also performed with Opera Birmingham in *The Pirates of Penzance*.



Matthew Reber is a junior vocal performance major from Memphis, TN. He is a three-year member of Samford's A Cappella Choir, and a member of St. Mary-on-the-Highland's church choir. Matthew's recent credits include Opera Birmingham's production of *Pirates of Penzance* and the music director of Samford Underground's *The Mad Ones*. Furthermore, he will participate in Opera Viva's summer conservatory this coming July in Verona, Italy.



CAST & CREW BIOGRAPHIES



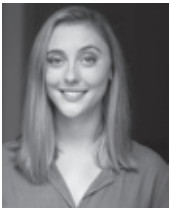
Joseph Robinson is a graduate vocal performance major from Meridian, MS. He received an Associate of Arts at Meridian Community College, where he participated in many shows like *Jekyll & Hyde* and *Tarzan*. Joseph then pursued a Bachelor of Arts at the University of Southern Mississippi, where he was seen in shows like *Phantom of the Opera*, *Carmen*, and *Turandot*. He was most recently on stage in Opera Birmingham's *Three Little Pigs* and *Sounds of the Season*.



Caitlyn Rodrigue is a graduate vocal performance major from Thibodaux, LA. She has previously been part of Samford's Opera Workshop Scenes in the scenes of *Le Nozze di Figaro* (Countess) and *With Blood With Ink* (Dying Juana). She is also a part of the studio, Opera Birmingham, where she has performed *Three Little Pigs* (Cherubino) and *Sounds of the Season*. Next on stage, Caitlyn will be in the ensemble of Opera Birmingham's production of *La Boheme*.



Dreanna Pulliam is a sophomore vocal performance major from Jacksonville, FL. She performed with Samford Opera in the Fall 2021 Opera Scenes.



Sam Riggs is a junior musical theatre major from Louisville, KY. Her previous Samford main stage credits include *Tinkerbell* (Captain Hook) and *A Christmas Carol* (Beadle/Ensemble). She has previously interned, and stage managed with Derby Dinner Playhouse and plans to travel to Scotland in August to participate in The Edinburgh Festival Fringe.



Brandon Szep is a junior musical theatre major from Charlotte, NC. This past December at Samford, he played the Ghost of Christmas Present in *A Christmas Carol*. Brandon has played the neighborhood bully, Scut Farkus, in the first and second Broadway National Tours of *A Christmas Story the Musical*. He has also had featured roles in film and television such as *Boardwalk Empire* (HBO) and *Unraveled* (Investigation Discovery).



CAST & CREW BIOGRAPHIES

Louisa Smith is a graduate vocal performance student from Nitro, WV. She received an undergraduate degree from Muskingum University. She participated in the Fall 2021 Opera Scenes, where she portrayed the roles of Fiordiligi (*Così fan tutte*) and First Lady (*Die Zauberflöte*).



Heather Thaxton is a graduate vocal performance major from Florence, AL. Her previous Samford performance credits include Marcelina in *The Marriage of Figaro* and scenes performances with opera workshop. She is currently a member of the Samford A Cappella Choir and is active in several church choir ensembles in the Birmingham area. She has performed with the Birmingham Music Club, portraying Cousin Hebe in *H.M.S. Pinafore* and Opera Birmingham as a member of the chorus in several shows.



Emeline Thornton is a junior music education major from Helena, AL. This is her first Samford production. She has greatly enjoyed this experience and hopes you enjoy the show!



McKenna Varner (Costume Designer) is a junior musical theatre major from Nashville, TN. She has recently finished *A Christmas Carol* (Emily) at Samford, and in Virginia Samford Theatre's *9 to 5 (Maria)*. McKenna has also costumed designed Samford's production of *Little Women* last spring.



Kelsey Wade is a graduate in music education student from Jasper, AL. At Samford, she has performed in various opera scenes and *The Ghosts of Gatsby* (Zelda 1948). She has also been a part of the Birmingham Music Club's performance of *H.M.S. Pinafore* (ensemble member). Kelsey is a member of Samford's A Cappella Choir.



Emily Weaver is a junior musical theatre major from Knoxville, TN. At Samford, Emily was in *A Christmas Carol* (Emily) and *Blue Yonder* (Diane/Sadie/Alice).



MUSIC, THEATRE, AND DANCE FACULTY AND STAFF

Emily Andrews, music
Michael Averett, music
Kim Bain, music
Laura Byland, theatre
Ann-Houston Campbell, theatre
Tim Carroll, music
Mark Castle, chair, theatre & dance
Jane Caswell, theatre
Philip Copeland, music
Christopher Crews, theatre
Grant Dalton, music
Joel Davis, music
Brad Diamond, music
Laura Doss, music
Angela Flaniken, music
Jeffrey Flaniken, music
Anna Foshee, dance
Chris Fryar, music
David Glenn, theatre
Rene' Golden, music
Sadie Goodman, music
Mary Gurney, theatre
Tracy Hanrahan, school of arts
Alex Horton, music
Hillary Horton, music
Kristin Kenning, music
Stephen B. Knight, music
Kevin Kozak, music
Mark Lackey, music
Jen Lane, theatre
Therese Laeger, dance
Sharon Lawhon, music

Marilyn Locke, theatre
Ryan Lovell, music
Connie Macon, music
Victor McCay, theatre
Alisa McCool, dance
Beth McGinnis, music
Nib McKinney, music
Brian Raphael Nabors, music
Chelsea Nicholson, theatre
Caroline Nordlund, music
Samuel Nordlund, music
David Odenwelder, dance
Steven Potaczek, music
Brent Reeves, music
Jonathan Rodgers, music
Donald Sandley, theatre
Morgan Soja, music
Christian Specht, theatre
Cindy St. Clair, chair, music
James Sullivan, music
Jaroslaw Szurek, music
Riggs Taylor, music
Fred Teardo, music
Jason Terry, music
Larry Thompson, dean
Demondrae Thurman, music
Lindsay Troha, dance
Brian Viliunas, music
Chris Withrow, music
Abigail Workman, music
Angela Yoon, music



Samford University School of the Arts *Offers*

Opera Birmingham Studio *at Samford University*

A partnership between Opera Birmingham and Samford's Master of Music in vocal performance.

Studio artists earning their Master of Music in vocal performance at Samford will have numerous performance opportunities, while also understudying leading roles, and performing comprimario roles, and educational outreach tours with Opera Birmingham, led by general director Keith A. Wolfe-Hughes.

Multiple positions are available for fall 2023 to qualified candidates.

Benefits include:

- Up to full tuition covered by Samford University
- Stipend provided by Opera Birmingham

Learn more at samford.edu/arts/music/masters-of-music-vocal-performance.

Contact Kristin Kenning with inquiries at kkenning@samford.edu

Samford University is an Equal Opportunity Educational Institution/Employer.

NAST | NATIONAL
ASSOCIATION
OF SCHOOLS
OF THEATRE



Samford University
School of the Arts

opera
birmingham
studio
at Samford University

ANNOUNCING THE 2022-23 THEATRE AND OPERA SEASON



Emma Taylor Theatre for Youth ***Orphie and the Book of Heroes (musical)***

Sept. 30-Oct. 2, Harrison Theatre

Michael J. and Mary Anne Freeman Theatre and Dance Series ***Mr. Burns, a post-electric play***

Oct. 27-30, Boren Courtyard

Dr. Chandler and Jane Paris Smith Opera Series ***Amahl & the Night Visitors***

Dec. 1-4, Harrison Theatre

Ten Minute Play Festival

Dec. 9-10

Michael J. and Mary Anne Freeman Theatre and Dance Series ***Annual Dance Concert***

Feb. 9-12, Harrison Theatre

Michael J. and Mary Anne Freeman Theatre and Dance Series ***The Birds***

Mar. 16-19, Harrison Theatre

Michael J. and Mary Anne Freeman Theatre and Dance Series ***Urinetown, the Musical***

Apr. 13-16, Harrison Theatre

One Act Play Festival

Apr. 20-21