

**Drawer Assembly**

**Step 1**

**Measure inside cabinet width (ICW)**

Use inside cabinet width (ICW) to calculate the drawer bottom and back dimensions. Formulas are found on the specification page of each application.

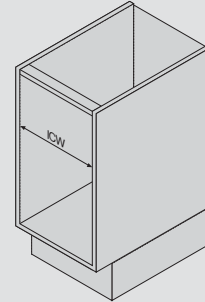
**M Height example:**

Drawer bottom: Width = ICW minus **35** (1-3/8")  
 Length = Actual cabinet profile length minus **10** (13/32")

Drawer back: Width = ICW minus **38** (1-1/2")  
 Height = **63** (2-15/32")

For best assembly results, use BOXFIX E-L.

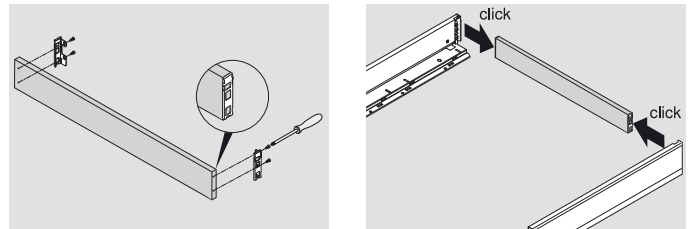
Use **16** (5/8") material for drawer bottom and back



**Step 2**

**Attach drawer back**

Rear fixing brackets are attached with #6 x 1/2" truss head screws (612TH). The drawer back, with rear fixing brackets attached, snaps into the rear of both drawer profiles.

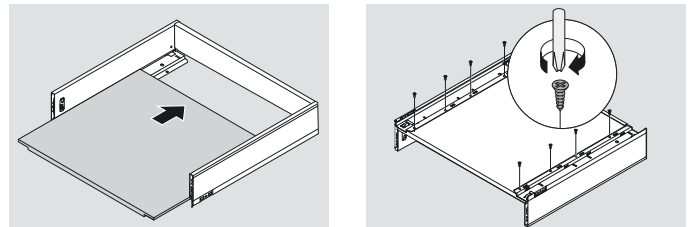


**Step 3**

**Drawer bottom installation**

The drawer bottom slides into the drawer profiles.

Push the drawer bottom flush with the front of the drawer.  
 Pre-bore and attach with wood screws (612TH).

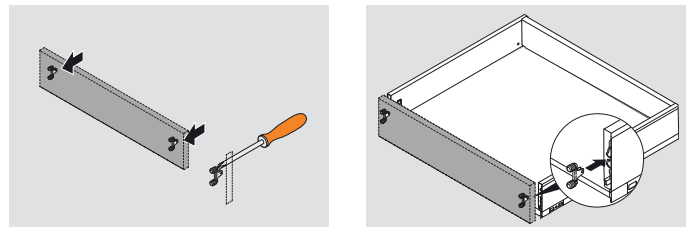


**Step 4**

**Attach drawer front**

Follow the installation drawing for locating hole positions for front fixing brackets and pre-bore the necessary EXPANDO Ø10 x 12 holes (screw-on versions also available). Insert front fixing bracket into pre-bored holes and screw as shown to secure.

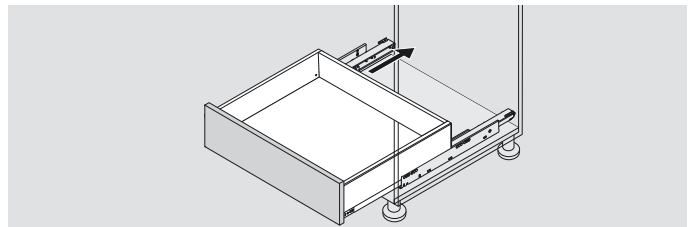
Snap drawer front onto drawer.



**Step 5**

**Drawer box installation**

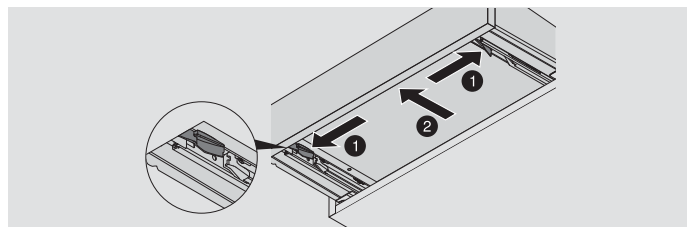
Place drawer box onto cabinet profiles and insert drawer box into cabinet.



**Drawer Removal**

**Drawer box removal**

Pull drawer forward to reveal locking devices. Squeeze triggers on locking device and lift drawer box off of runners.



## LEGRABOX



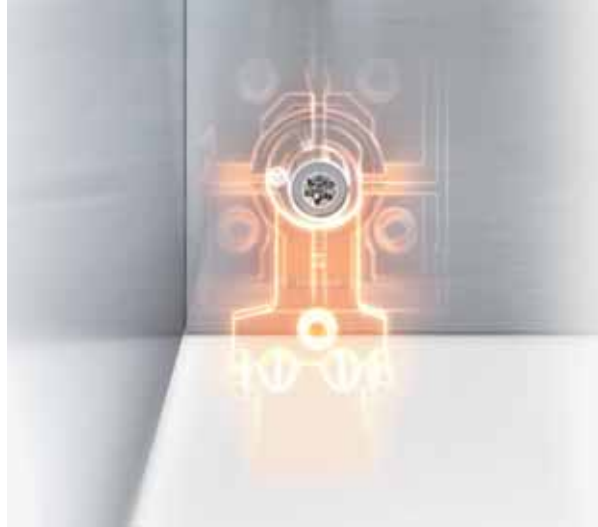
### Easy Adjustment

One of the many benefits of the LEGRABOX system is the fully integrated, three-dimensional adjustment mechanism. Height and side adjustments can be made easily on the inside of the drawer profile, beneath the cover cap, and the tilt adjustment is located at the rear of the profile. Additionally, all adjustments are made using a T20 TORX driver (see page 58).

#### Height Adjustment



#### Tilt Adjustment



#### Side Adjustment



#### Front Removal

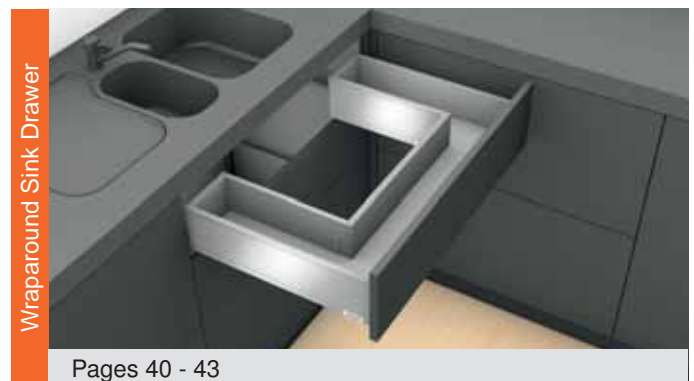


### LEGRABOX Online Product Configurator

#### Easy Planning

Blum offers many online tools to help you with your kitchen planning and ordering. Online Product Configurator (OPC) offers a parts list and planning information based on your specifications. Once complete, your results can then be exported to a shareable document.

OPC is easily accessible on our website at [blum.com/configurator](http://blum.com/configurator)



N Height Drawer

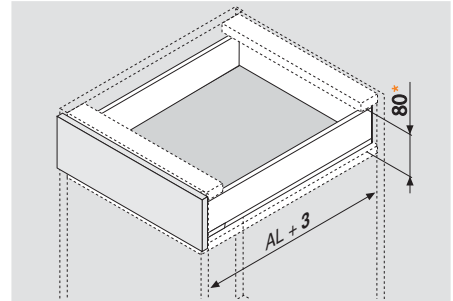
Application



Features

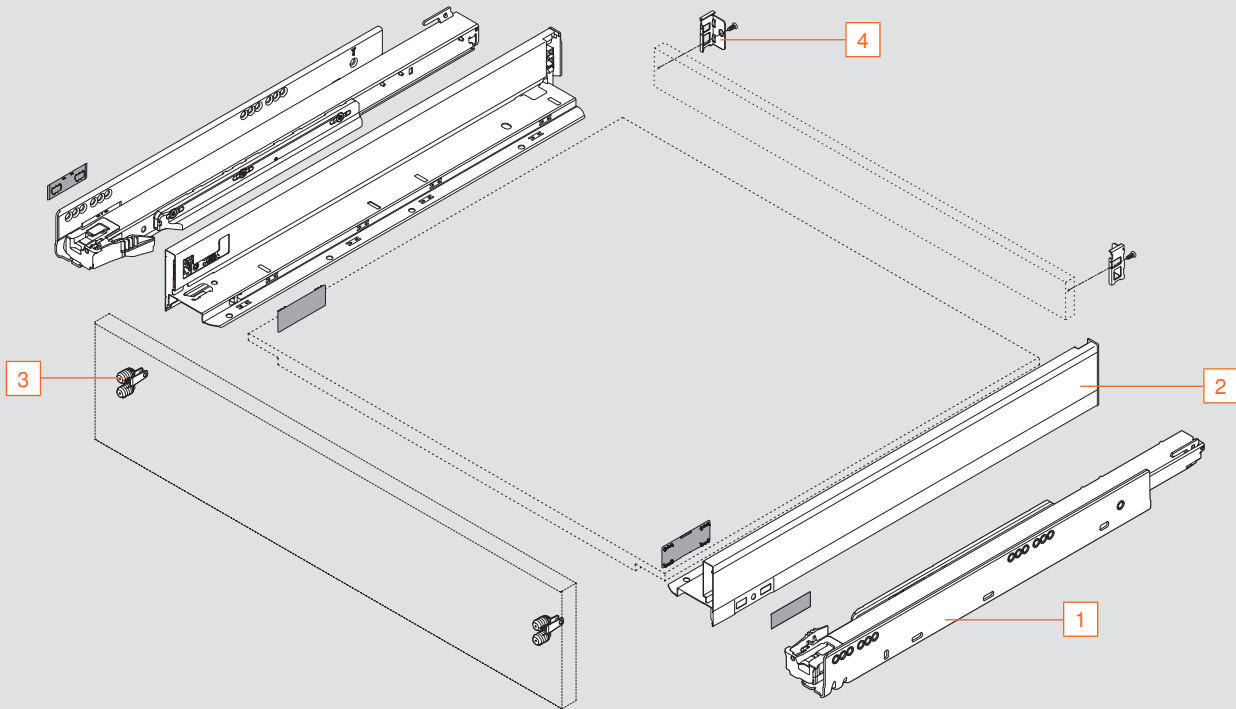
- Full extension drawer system with BLUMOTION
- Smooth running action
- Two-dimensional drawer front adjustment
- Dynamic load capacity of 88 lb
- Drawer profile height 66.5 (2-5/8")

Space Requirements



AL = Actual cabinet profile length  
 \*Minimum opening height based on 3 (1/8") clearance

Components



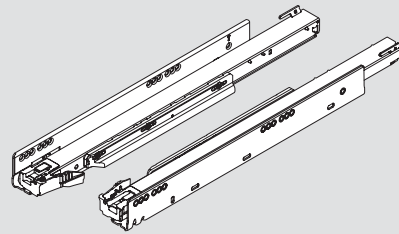
**NOTE:** Parts identified on right page

Cabinet and drawer profile sets

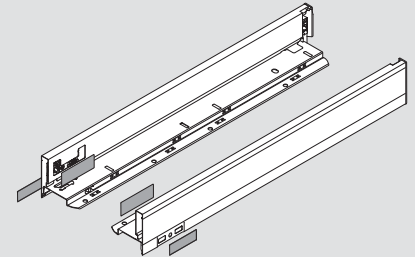
Sets include:

- Left and right profile
- Drawer profiles include color coordinated cover cap

1 Cabinet profile



2 Drawer profile



Nominal length	Actual cabinet profile length	88 lb	Orion gray	Stainless steel
18"	450 (17-11/16")	750.4501B	770N4502S	770N4502I
20"	500 (19-11/16")	750.5001B	770N5002S	770N5002I
22"	550 (21-5/8")	750.5501B	770N5502S	770N5502I
Installation wood screw		707N	612TH	612TH
Installation system screw		661.1300.HG		

Front fixing bracket

3

- Two required per drawer

EXPANDO



Part no.

EXPANDO	ZF7N70E2
Screw-on*	ZF7N7002

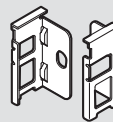
\*Use of #6 x 5/8" wood screw is recommended

Rear fixing bracket set

4

Set includes:

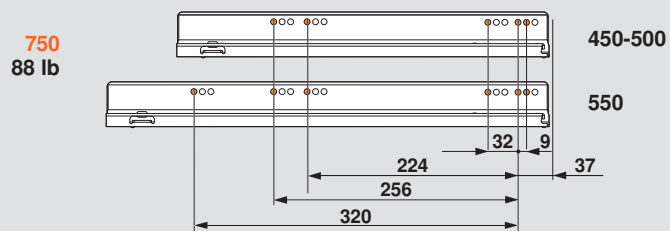
- Left and right bracket
- Orion gray (OG-M)



Part no.

Rear fixing bracket set	ZB7N000S
Installation screw	612TH

Cabinet profile installation

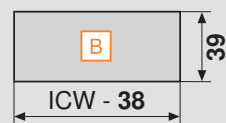


**NOTE:** The orange dots indicate fixing screw locations required to meet specified load ratings

Cutting dimensions for bottom and back

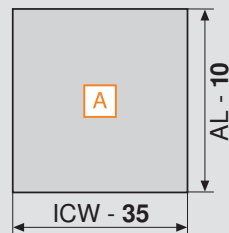
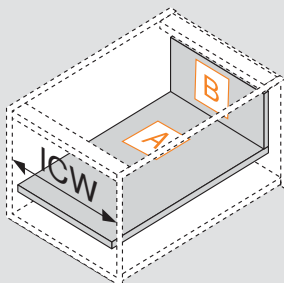
**Drawer bottom**

Width = Inside cabinet width minus **35** (1-3/8")  
 Length = Actual cabinet profile length minus **10** (13/32")

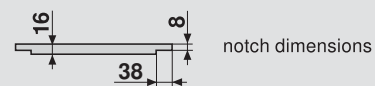


**Drawer back**

Width = Inside cabinet width minus **38** (1-1/2")  
 Height = **39** (1-17/32")

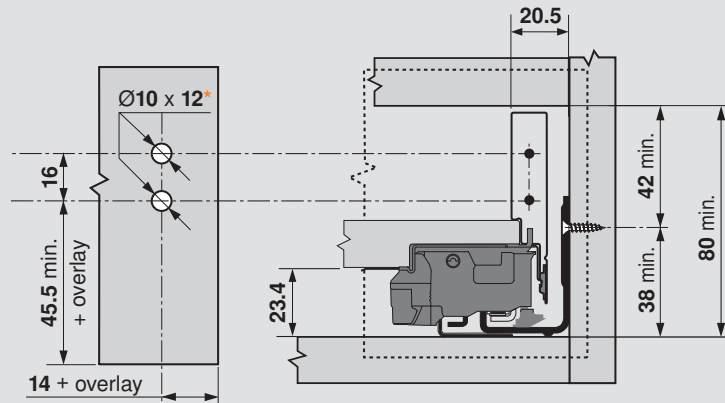


AL = Actual cabinet profile length  
 ICW = Inside cabinet width



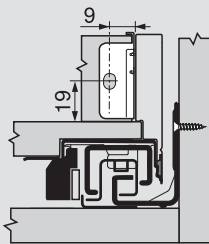
**NOTE:** Use **16** (5/8") material for bottom and back

Front fixing bracket installation

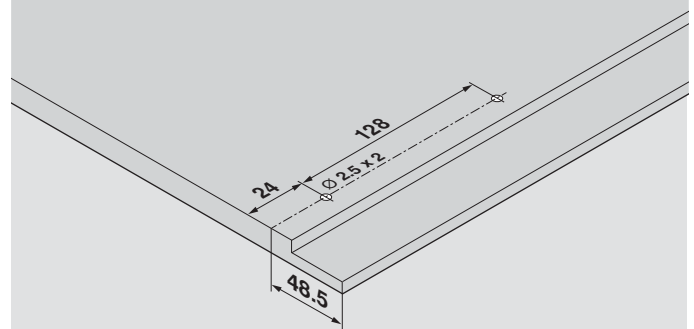


\*Pre-boring dimensions for EXPANDO only, for screw-on pre-bore Ø2 x 2.5

Rear fixing bracket installation



Bottom boring distance



Pre-bore dimension Ø 2.5 x 2

M Height Drawer

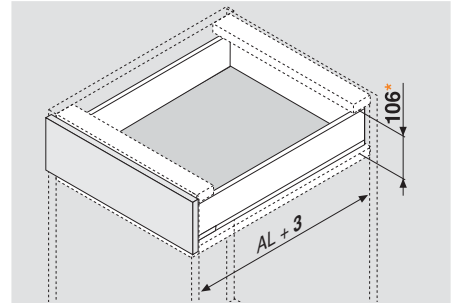
Application



Features

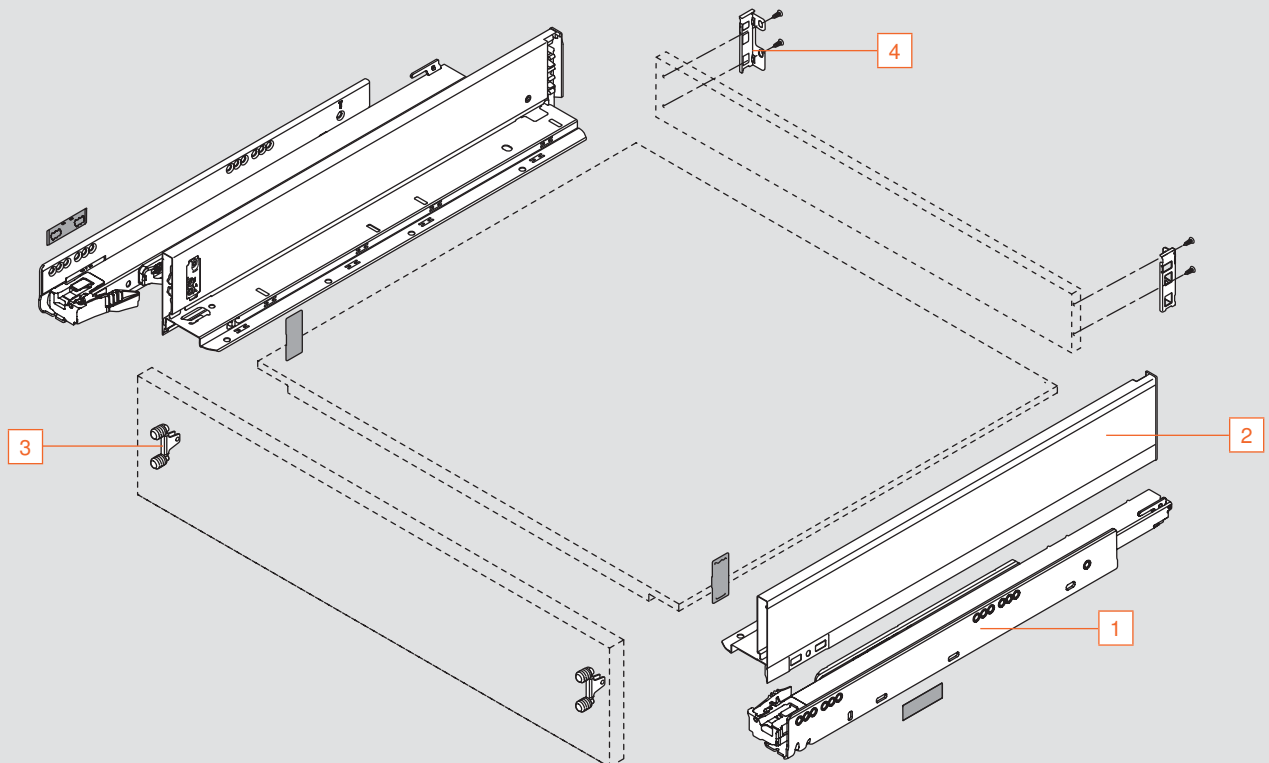
- Full extension drawer system with BLUMOTION
- Smooth running action
- Three-dimensional drawer front adjustment
- Dynamic load capacity of 88 lb and 155 lb
- Drawer profile height 90.5 (3-9/16")

Space Requirements



AL = Actual cabinet profile length  
 \*Minimum opening height based on 3 (1/8") clearance

Components



**NOTE:** Parts identified on right page



## Required Parts

LEGRABOX

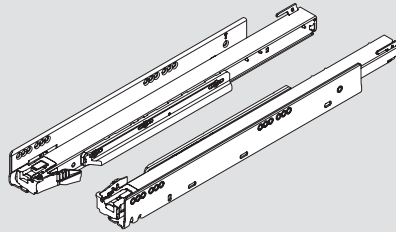


### Cabinet and drawer profile sets

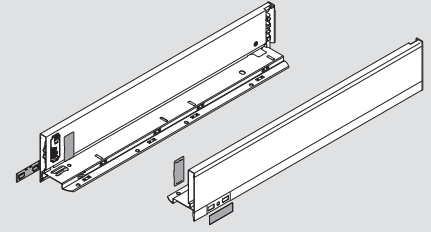
**Sets include:**

- Left and right profile
- Drawer profiles include color coordinated cover cap

**1** Cabinet profile



**2** Drawer profile



Nominal length	Actual cabinet profile length	Cabinet profile		Drawer profile	
		88 lb	155 lb	Orion gray	Stainless steel
11"	<b>270</b> (10-5/8")	<b>750.2701B</b>		<b>770M2702S</b>	<b>770M2702I</b>
14"	<b>350</b> (13-3/4")	<b>750.3501B</b>		<b>770M3502S</b>	<b>770M3502I</b>
16"	<b>400</b> (15-3/4")	<b>750.4001B</b>		<b>770M4002S</b>	<b>770M4002I</b>
18"	<b>450</b> (17-11/16")	<b>750.4501B</b>	<b>753.4501B</b>	<b>770M4502S</b>	<b>770M4502I</b>
20"	<b>500</b> (19-11/16")	<b>750.5001B</b>	<b>753.5001B</b>	<b>770M5002S</b>	<b>770M5002I</b>
22"	<b>550</b> (21-5/8")	<b>750.5501B</b>	<b>753.5501B</b>	<b>770M5502S</b>	<b>770M5502I</b>
24"	<b>600</b> (23-5/8")		<b>753.6001B</b>	<b>770M6002S</b>	<b>770M6002I</b>
Installation wood screw		<b>707N</b>	<b>707N</b>	<b>612TH</b>	<b>612TH</b>
Installation system screw		<b>661.1300.HG</b>	<b>661.1300.HG</b>		

### Front fixing bracket

- Two required per drawer

**EXPANDO**

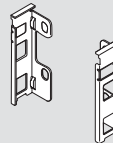


Part no.	
EXPANDO	<b>ZF7M70E2</b>
Screw-on*	<b>ZF7M7002</b>

\*Use of #6 x 5/8" wood screw is recommended

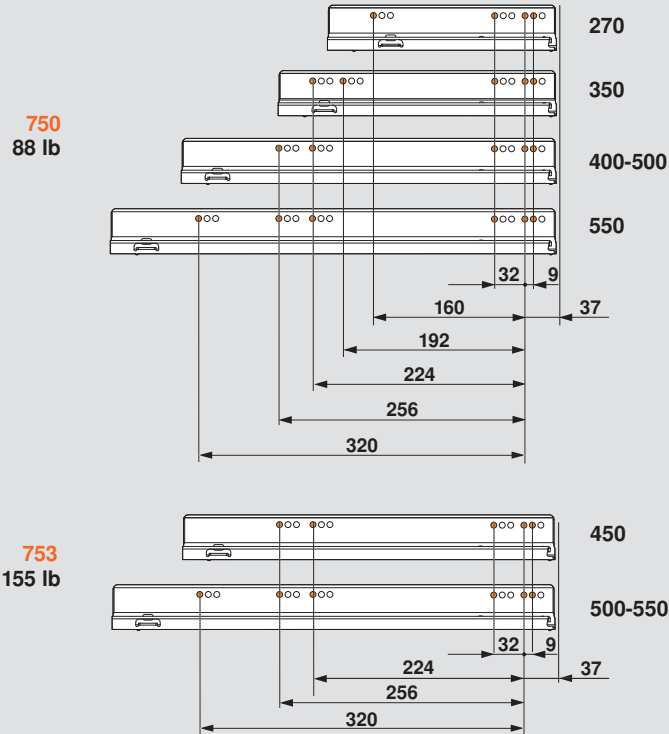
### Rear fixing bracket set

- Left and right bracket
- Orion gray (OG-M)



Part no.	
Rear fixing bracket set	<b>ZB7M000S</b>
Installation screw	<b>612TH</b>

Cabinet profile installation



**NOTE:** The orange dots indicate fixing screw locations required to meet specified load ratings

Cutting dimensions for bottom and back

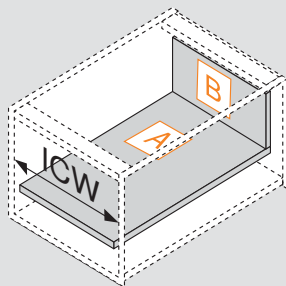
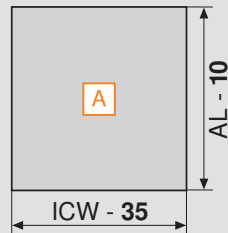
**Drawer bottom**

Width = Inside cabinet width minus **35** (1-3/8")  
 Length = Actual cabinet profile length minus **10** (13/32")

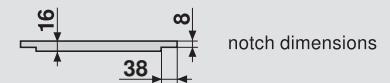


**Drawer back**

Width = Inside cabinet width minus **38** (1-1/2")  
 Height = **63** (2-15/32")

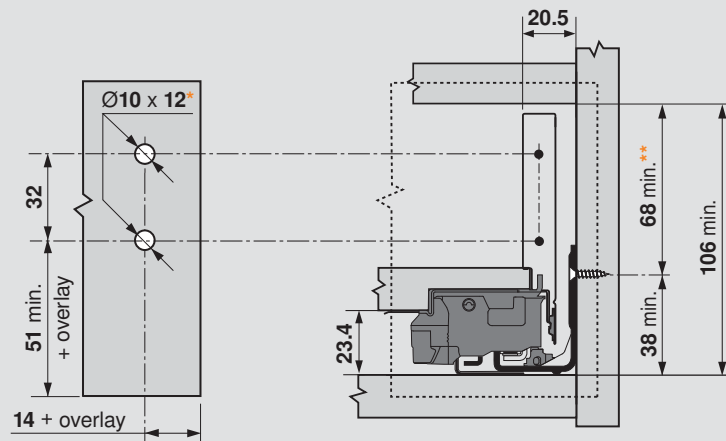


AL = Actual cabinet profile length  
 ICW = Inside cabinet width



**NOTE:** Use **16** (5/8") material for bottom and back

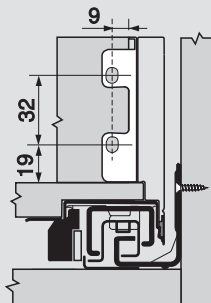
Front fixing bracket installation



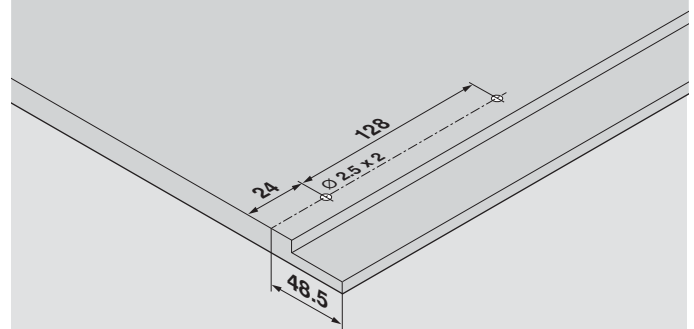
\*Pre-boring dimensions for EXPANDO only, for screw-on pre-bore  $\text{Ø}2 \times 2.5$

\*\*Includes 2 tilt adjustment

Rear fixing bracket installation



Bottom boring distance



Pre-bore dimension  $\text{Ø}2.5 \times 2$

K Height Drawer

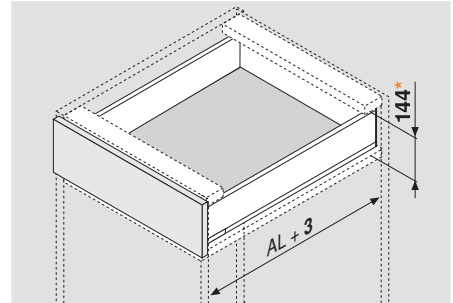
Application



Features

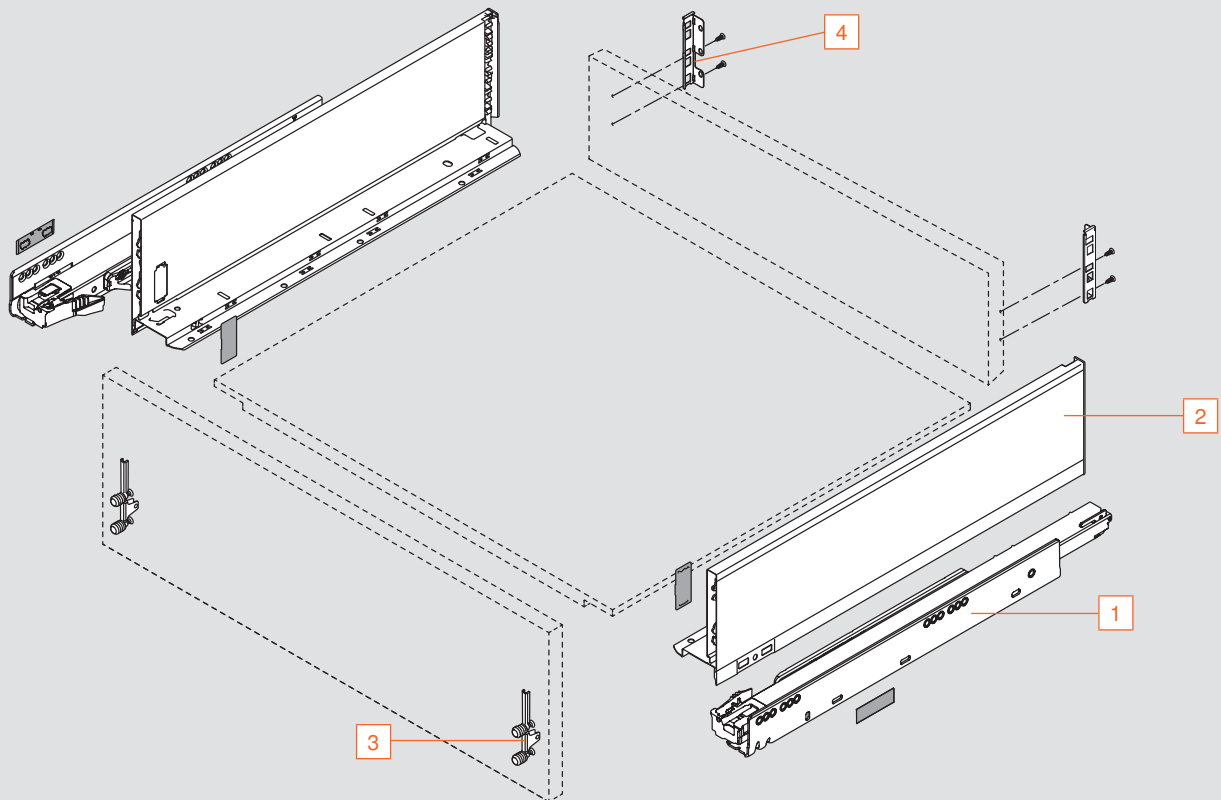
- Full extension drawer system with BLUMOTION
- Smooth running action
- Three-dimensional drawer front adjustment
- Dynamic load capacity of 88 lb and 155 lb
- Drawer profile height 128.5 (5-1/16")

Space Requirements



AL = Actual cabinet profile length  
 \*Minimum opening height based on 3 (1/8") clearance

Components



**NOTE:** Parts identified on right page

## Required Parts

LEGRABOX

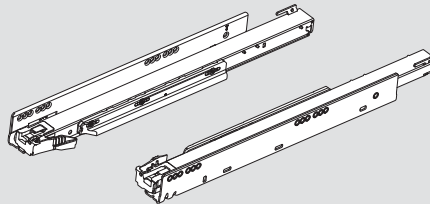


### Cabinet and drawer profile sets

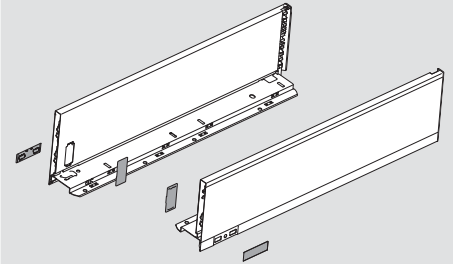
**Sets include:**

- Left and right profile
- Drawer profiles include color coordinated cover cap

**1** Cabinet profile



**2** Drawer profile

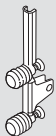


Nominal length	Actual cabinet profile length	Cabinet profile		Drawer profile	
		88 lb	155 lb	Orion gray	Stainless steel
14"	<b>350</b> (13-3/4")	<b>750.3501B</b>		<b>770K3502S</b>	<b>770K3502I</b>
16"	<b>400</b> (15-3/4")	<b>750.4001B</b>		<b>770K4002S</b>	<b>770K4002I</b>
18"	<b>450</b> (17-11/16")	<b>750.4501B</b>	<b>753.4501B</b>	<b>770K4502S</b>	<b>770K4502I</b>
20"	<b>500</b> (19-11/16")	<b>750.5001B</b>	<b>753.5001B</b>	<b>770K5002S</b>	<b>770K5002I</b>
22"	<b>550</b> (21-5/8")	<b>750.5501B</b>	<b>753.5501B</b>	<b>770K5502S</b>	<b>770K5502I</b>
Installation wood screw		<b>707N</b>	<b>707N</b>	<b>612TH</b>	<b>612TH</b>
Installation system screw		<b>661.1300.HG</b>	<b>661.1300.HG</b>		

### Front fixing bracket

- Two required per drawer

**EXPANDO**

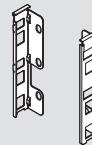


Part no.	
EXPANDO	<b>ZF7K70E2</b>
Screw-on*	<b>ZF7K7002</b>

\*Use of #6 x 5/8" wood screw is recommended

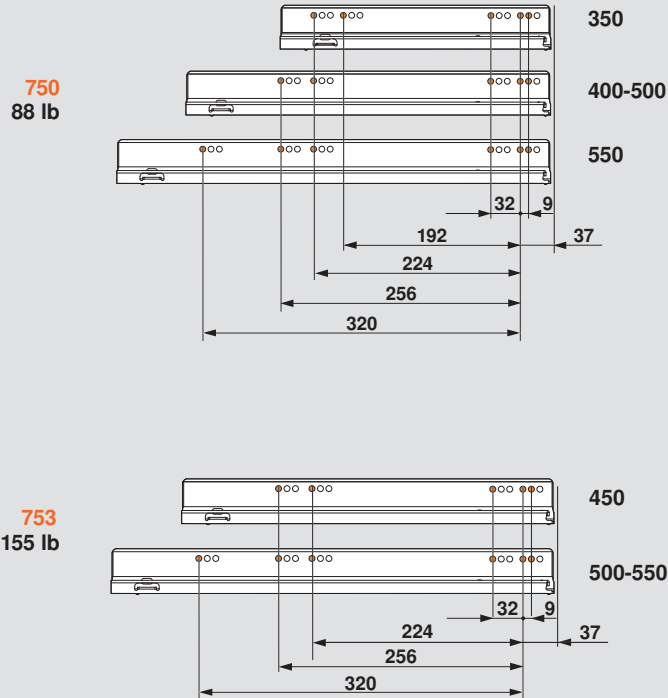
### Rear fixing bracket set

- Set includes:
  - Left and right bracket
  - Orion gray (OG-M)



Part no.	
Rear fixing bracket set	<b>ZB7K000S</b>
Installation screw	<b>612TH</b>

Cabinet profile installation



**NOTE:** The orange dots indicate fixing screw locations required to meet specified load ratings

Cutting dimensions for bottom and back

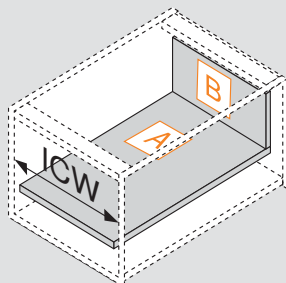
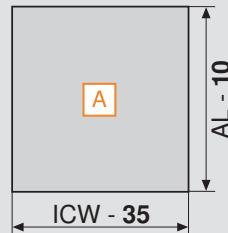
**Drawer bottom**

Width = Inside cabinet width minus **35** (1-3/8")  
 Length = Actual cabinet profile length minus **10** (13/32")



**Drawer back**

Width = Inside cabinet width minus **38** (1-1/2")  
 Height = **101** (3-31/32")

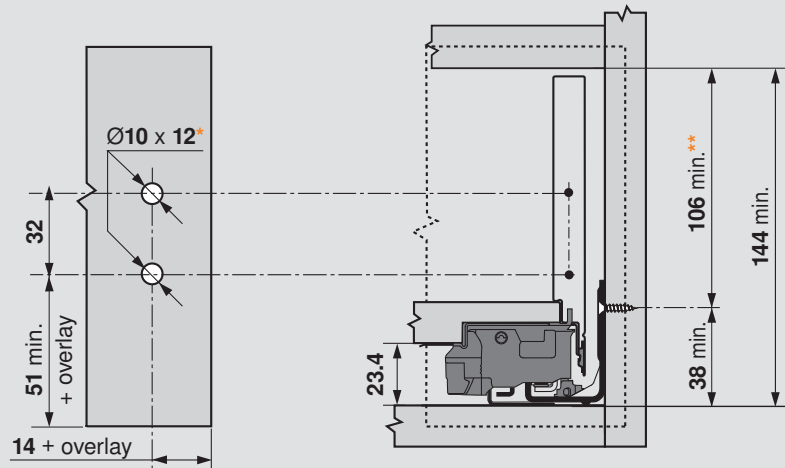


AL = Actual cabinet profile length  
 ICW = Inside cabinet width



**NOTE:** Use **16** (5/8") material for bottom and back

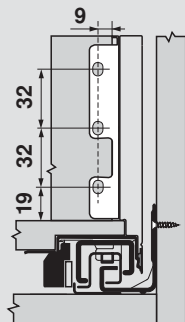
Front fixing bracket installation



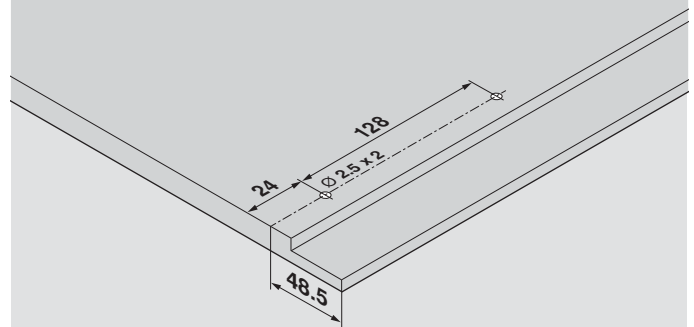
\*Pre-boring dimensions for EXPANDO only, for screw-on pre-bore  $\text{Ø}2 \times 2.5$

\*\*Includes 2 tilt adjustment

Rear fixing bracket installation



Bottom boring distance



Pre-bore dimension  $\text{Ø}2.5 \times 2$

## C Height Drawer

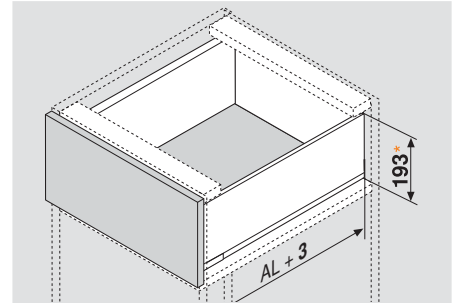
## Application



## Features

- Full extension drawer system with BLUMOTION
- Smooth running action
- Three-dimensional drawer front adjustment
- Dynamic load capacity of 88 lb and 155 lb
- Drawer profile height 177 (7")

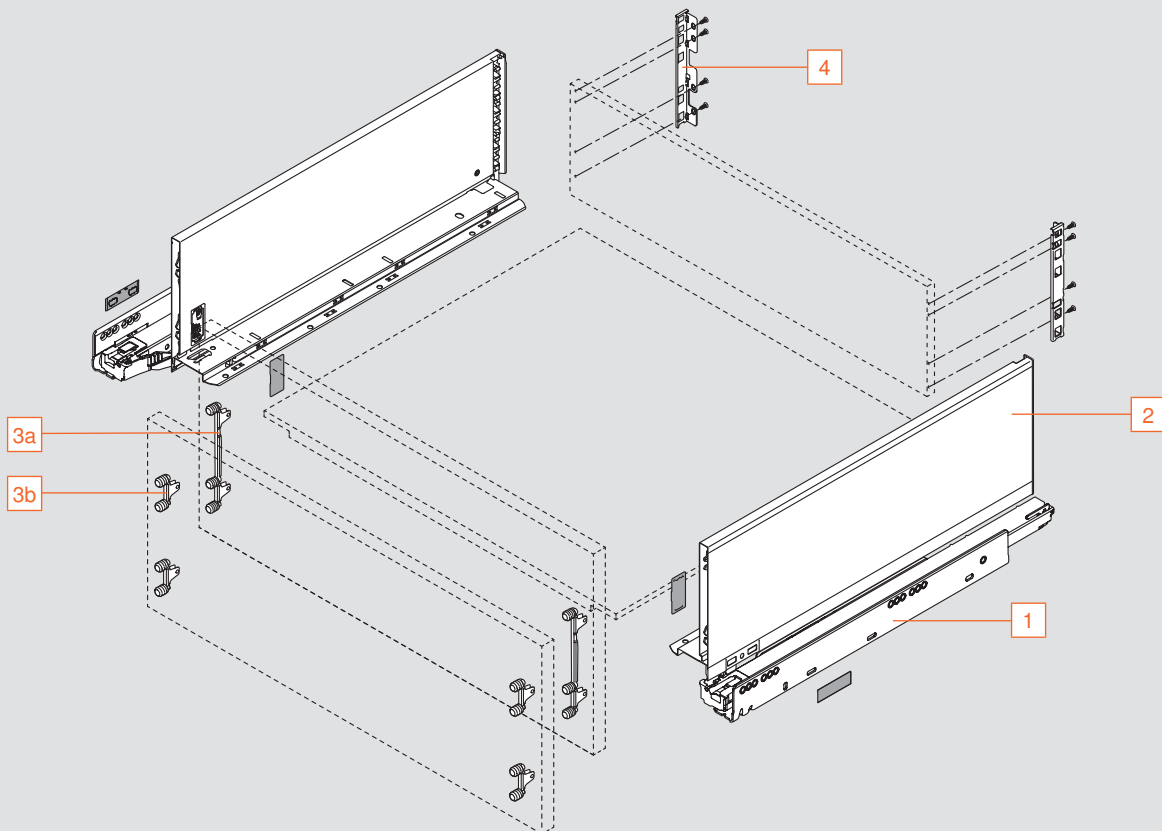
## Space Requirements



AL = Actual cabinet profile length

\*Minimum opening height based on 3 (1/8") clearance

## Components



**NOTE:** Parts identified on right page



## Required Parts

LEGRABOX

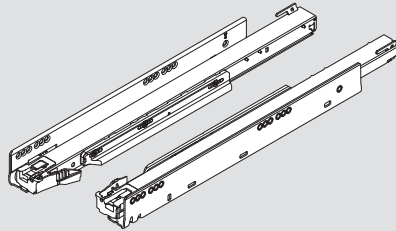


### Cabinet and drawer profile sets

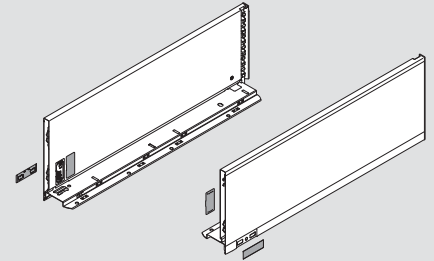
**Sets include:**

- Left and right profile
- Drawer profiles include color coordinated cover cap

**1** Cabinet profile



**2** Drawer profile



Nominal length	Actual cabinet profile length	Cabinet profile		Drawer profile	
		88 lb	155 lb	Orion gray	Stainless steel
11"	<b>270</b> (10-5/8")	<b>750.2701B</b>		<b>770C2702S</b>	<b>770C2702I</b>
14"	<b>350</b> (13-3/4")	<b>750.3501B</b>		<b>770C3502S</b>	<b>770C3502I</b>
16"	<b>400</b> (15-3/4")	<b>750.4001B</b>		<b>770C4002S</b>	<b>770C4002I</b>
18"	<b>450</b> (17-11/16")	<b>750.4501B</b>	<b>753.4501B</b>	<b>770C4502S</b>	<b>770C4502I</b>
20"	<b>500</b> (19-11/16")	<b>750.5001B</b>	<b>753.5001B</b>	<b>770C5002S</b>	<b>770C5002I</b>
22"	<b>550</b> (21-5/8")	<b>750.5501B</b>	<b>753.5501B</b>	<b>770C5502S</b>	<b>770C5502I</b>
24"	<b>600</b> (23-5/8")		<b>753.6001B</b>	<b>770C6002S</b>	<b>770C6002I</b>
Installation wood screw		<b>707N</b>	<b>707N</b>	<b>612TH</b>	<b>612TH</b>
Installation system screw		<b>661.1300.HG</b>	<b>661.1300.HG</b>		

### Front fixing bracket options

**EXPANDO**

- Two C brackets required per drawer

**3a**



Part no.

EXPANDO	<b>ZF7C70E2</b>
Screw-on*	<b>ZF7C7002</b>

**OR**

**3b**



- Four M brackets required per drawer

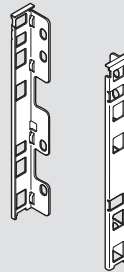
Part no.

EXPANDO	<b>ZF7M70E2</b>
Screw-on*	<b>ZF7M7002</b>

\*Use of #6 x 5/8" wood screw recommended

### Rear fixing bracket set

**4**



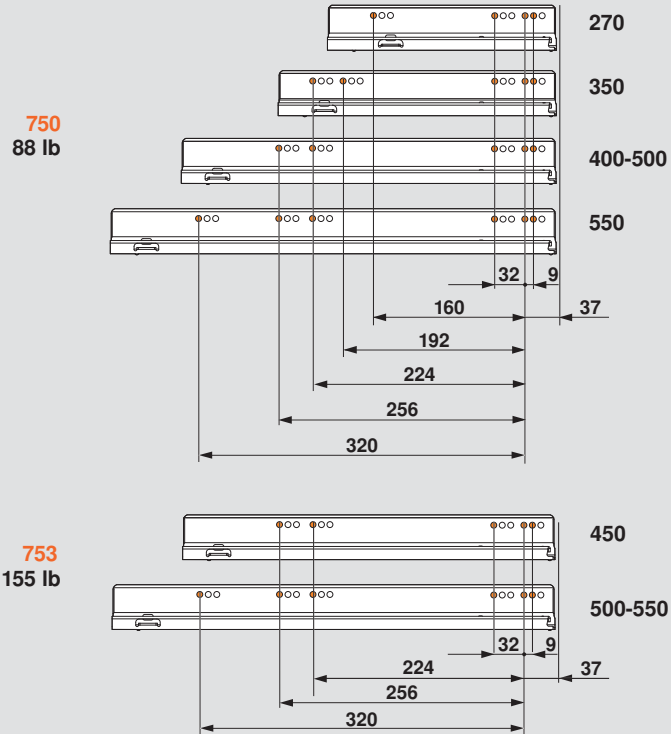
**Set includes:**

- Left and right bracket
- Orion gray (OG-M)

Part no.

Rear fixing bracket set	<b>ZB7C000S</b>
Installation screw	<b>612TH</b>

Cabinet profile installation

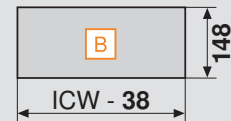


**NOTE:** The orange dots indicate fixing screw locations required to meet specified load ratings

Cutting dimensions for bottom and back

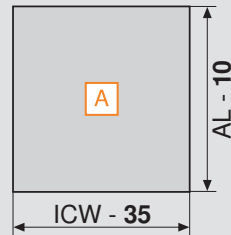
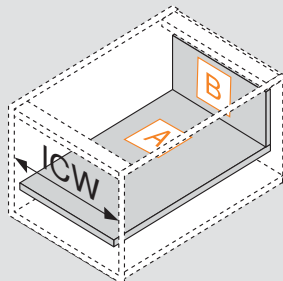
**Drawer bottom**

Width = Inside cabinet width minus **35** (1-3/8")  
 Length = Actual cabinet profile length minus **10** (13/32")



**Drawer back**

Width = Inside cabinet width minus **38** (1-1/2")  
 Height = **148** (5-13/16")

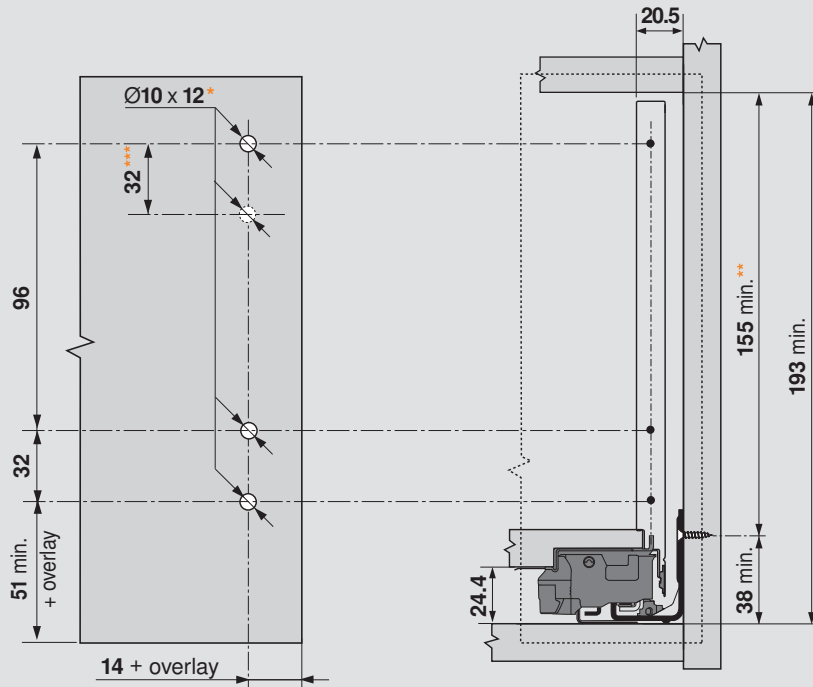


AL = Actual cabinet profile length  
 ICW = Inside cabinet width



**NOTE:** Use **16** (5/8") material for bottom and back

Front fixing bracket installation

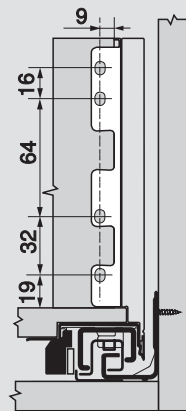


\*Pre-boring dimensions for EXPANDO only, for screw-on pre-bore  $\text{Ø}2 \times 2.5$

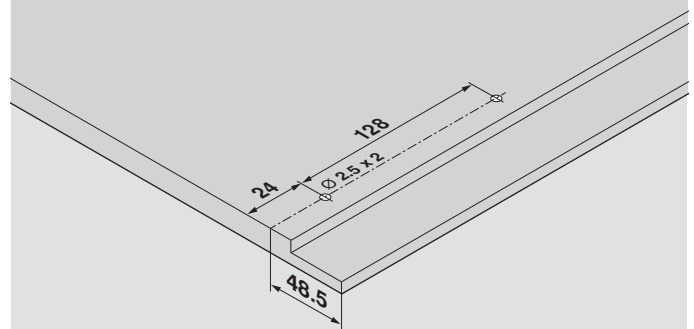
\*\*Includes 2 tilt adjustment

\*\*\*For use with two M brackets

Rear fixing bracket installation



Bottom boring distance



Pre-bore dimension  $\text{Ø}2.5 \times 2$

## F Height Drawer

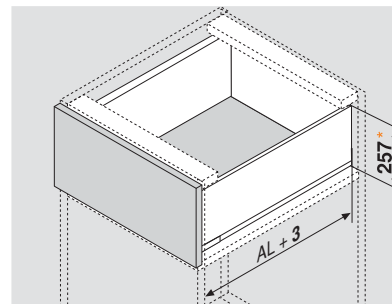
## Application



## Features

- Full extension drawer system with BLUMOTION
- Smooth running action
- Three-dimensional drawer front adjustment
- Dynamic load capacity of 88 lb and 155 lb
- Drawer profile height **241** (9-1/2")

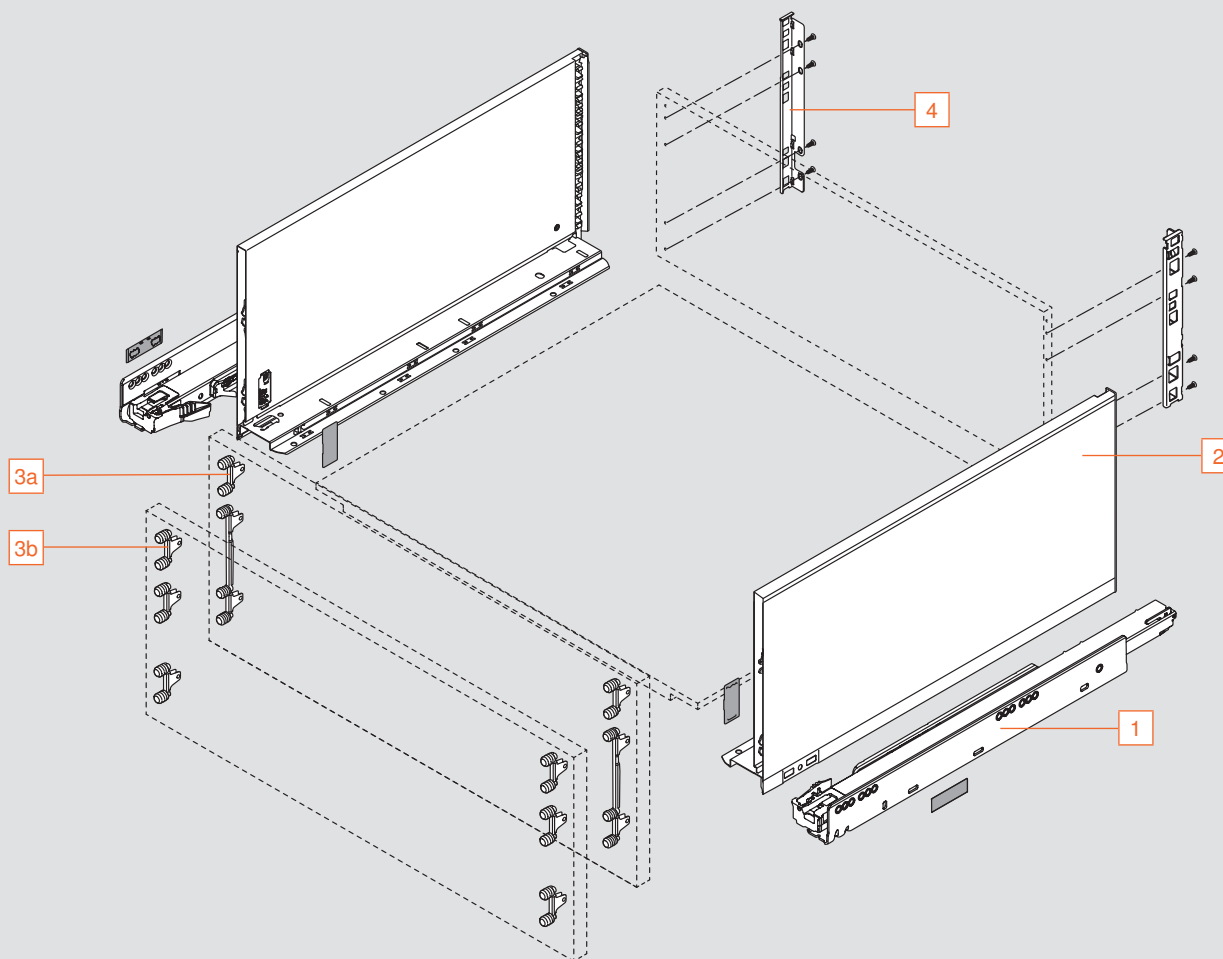
## Space Requirements



AL = Actual cabinet profile length

\*Minimum opening height based on 3 (1/8") clearance

## Components



**NOTE:** Parts identified on right page

## Required Parts

LEGRABOX

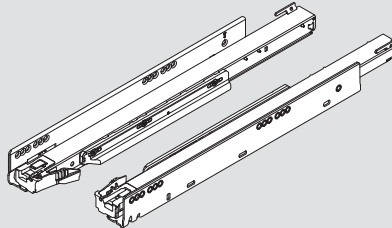


### Cabinet and drawer profile sets

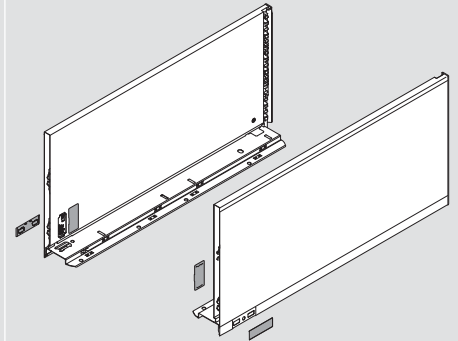
**Sets include:**

- Left and right profile
- Drawer profiles include color coordinated cover cap

1 Cabinet profile



2 Drawer profile



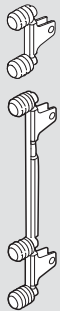
Nominal length	Actual cabinet profile length				
		88 lb	155 lb	Orion gray	Stainless steel
16"	400 (15-3/4")	750.4001B		770F4002S	770F4002I
18"	450 (17-11/16")	750.4501B	753.4501B	770F4502S	770F4502I
20"	500 (19-11/16")	750.5001B	753.5001B	770F5002S	770F5002I
22"	550 (21-5/8")	750.5501B	753.5501B	770F5502S	770F5502I
Installation wood screw		707N	707N	612TH	612TH
Installation system screw		661.1300.HG	661.1300.HG		

### Front fixing bracket options

**EXPANDO**

- Two M brackets required per drawer
- Two C brackets required per drawer

3a



Part no.

EXPANDO	ZF7M70E2
Screw-on*	ZF7M7002
EXPANDO	ZF7C70E2
Screw-on*	ZF7C7002

**OR**

3b



- Six M brackets required per drawer

Part no.

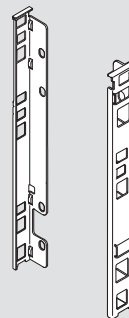
EXPANDO	ZF7M70E2
Screw-on*	ZF7M7002

\*Use of #6 x 5/8" wood screw recommended

**NOTE:** Top bracket ZFM70E2 provides lateral stability

### Rear fixing bracket set

4



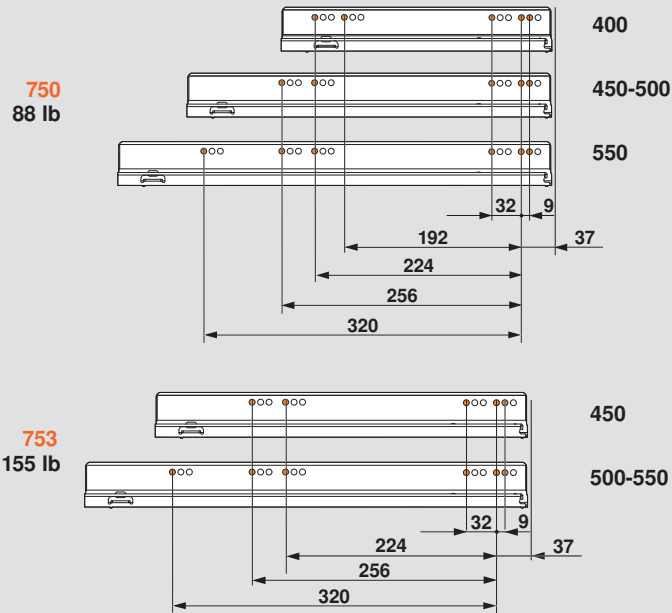
**Set includes:**

- Left and right bracket
- Orion gray (OG-M)

Part no.

Rear fixing bracket set	ZB7F000S
Installation screw	612TH

Cabinet profile installation



**NOTE:** The orange dots indicate fixing screw locations required to meet specified load ratings

Cutting dimensions for bottom and back

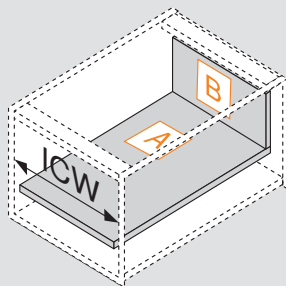
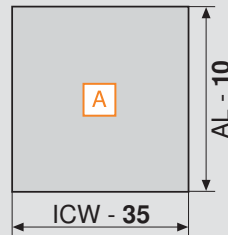
**Drawer bottom**

Width = Inside cabinet width minus **35** (1-3/8")  
 Length = Actual cabinet profile length minus **10** (13/32")



**Drawer back**

Width = Inside cabinet width minus **38** (1-1/2")  
 Height = **212** (8-11/32")

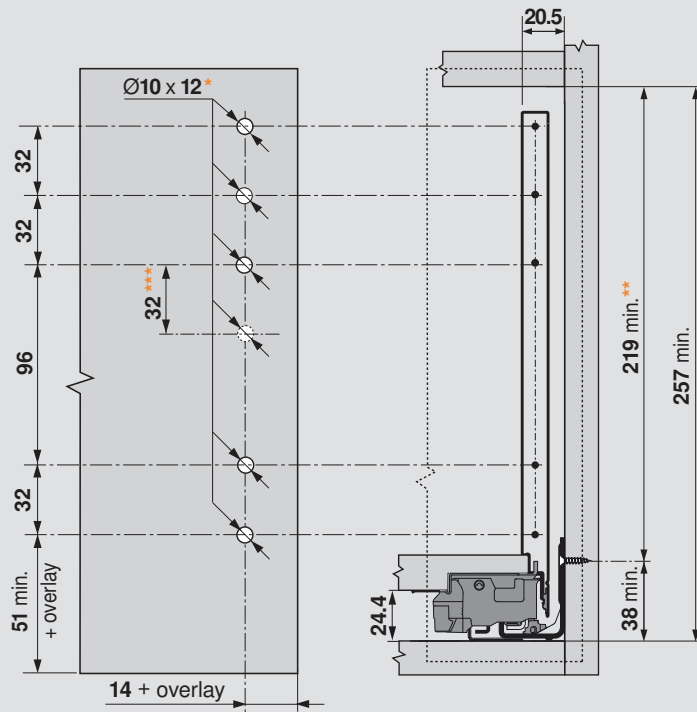


AL = Actual cabinet profile length  
 ICW = Inside cabinet width



**NOTE:** Use **16** (5/8") material for bottom and back

Front fixing bracket installation

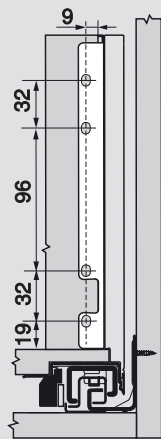


\*Pre-boring dimensions for EXPANDO only, for screw-on pre-bore  $\text{Ø}2 \times 2.5$

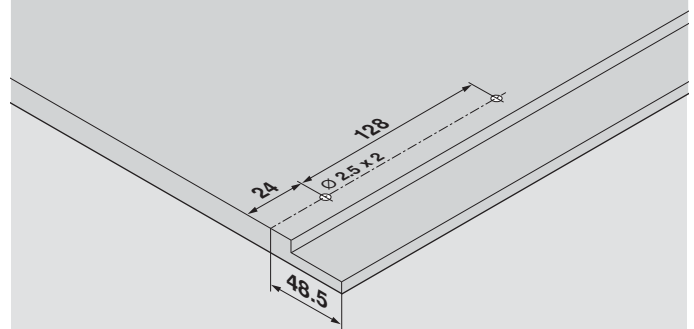
\*\*Includes 2 tilt adjustment

\*\*\*For use with three M brackets

Rear fixing bracket installation



Bottom boring distance



Pre-bore dimension  $\text{Ø}2.5 \times 2$