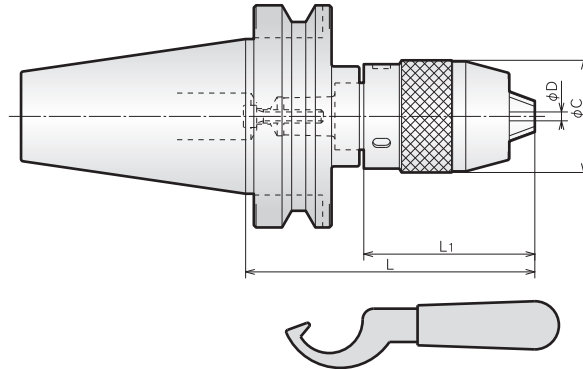


ドリルチャック(シャンク一体型)

DRILL CHUCK (SINGLE PIECE WITH SHANK)

BT^{No}-SDC^{φD}MAX-^L

| 特 長 | FEATURES |
|---|---|
| <ul style="list-style-type: none"> ●従来のドリルチャックよりL寸法が短くコンパクトです。 ●シャンク一体化の為、脱落はありません。 ●高トルク加工の場合、付属レンチで締めることも出来ます。 | <ul style="list-style-type: none"> ●Drill chuck is positively coupled with the holder. ●Short (L length) and compact. ●Clamping force can be increased by the attached wrench. |



※BT 2面拘束主軸対応ツーリング (SBT) も用意しております。
Tooling compatible with the BT two-face clamping spindle (SBT) is also available.

| MODEL | GRIPPING RANGE φD | L | | L1 | | φC | N/W (kg) | |
|-------|----------------------|----------|-------|-------|-------|------|-------------|-----|
| | | OPEN | CLOSE | OPEN | CLOSE | | | |
| BT30 | -SDC08-080 | 0.3 ~ 8 | 78 | 85.5 | 48 | 55.5 | 36 | 0.7 |
| | -SDC13-100 | 0.3 ~ 13 | 98 | 105.5 | 65.5 | 77 | 50.5 | 1.3 |
| BT40 | -SDC08-080 | 0.3 ~ 8 | 78 | 85.5 | 48 | 55.5 | 36 | 1.3 |
| | -SDC13-100 | 0.3 ~ 13 | 98 | 109.5 | 65.5 | 77 | 50.5 | 1.8 |
| BT50 | -SDC08-100 | 0.3 ~ 8 | 98 | 105.5 | 48 | 55.5 | 36 | 4.1 |
| | -SDC13-120 | 0.3 ~ 13 | 118 | 129.5 | 65.5 | 77 | 50.5 | 4.5 |
| | -160 | | 158 | 169.5 | | | | 5.1 |

注：1. チャックレンチは付属されております。
NOTE：1. Each SDC chuck is supplied with a wrench.

ご注文例 ORDERING EXAMPLE

① BT30 - ② SDC ③ 08 - ④ 080

① シャンクサイズ Shank Size
② 呼称 Holder's Name
③ Max.φD Max.φD
④ GL長さ L G.L. Length

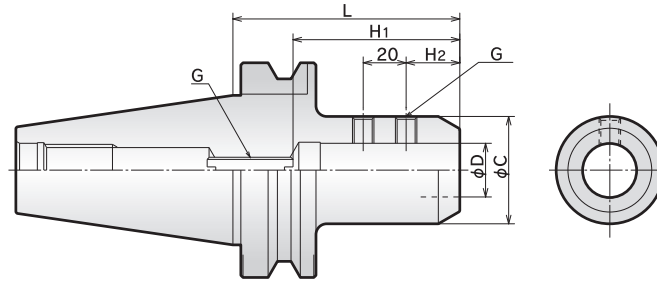
サイドロックホルダA型

END MILL HOLDER

BT_{No}-SLA_D-_L

センタースルー対応

Thru-the-tool Coolant Available



※BT 2面拘束主軸対応ツールリング (SBT) も用意しております。
Tooling compatible with the BT two-face clamping spindle (SBT) is also available.

| MODEL | φD(H6) | L | φC | H1 | | H2 | G | N/W (kg) |
|-------|------------|----|-----|------|------|----|----|----------|
| | | | | MIN. | MAX. | | | |
| BT30 | -SLA20-075 | 20 | 75 | 45 | 55 | 70 | 25 | 0.80 |
| | -SLA25-085 | 25 | 85 | | 55 | 70 | | 0.85 |
| BT40 | -SLA16-090 | 16 | 90 | 48 | 35 | 50 | 24 | 1.8 |
| | -SLA20-090 | 20 | | 50 | 55 | 70 | 25 | 1.8 |
| | -SLA25-090 | 25 | | 60 | 65 | 80 | 30 | 1.7 |
| | -SLA32-105 | 32 | | 105 | 60 | 65 | 80 | 30 |
| BT50 | -SLA20-105 | 20 | 105 | 50 | 55 | 70 | 25 | 4.4 |
| | -SLA25-105 | 25 | | 50 | 55 | 70 | 25 | 4.3 |
| | -SLA32-105 | 32 | | 60 | 65 | 80 | 30 | 4.5 |
| | -SLA40-105 | 40 | | 70 | 70 | 85 | 25 | 4.7 |
| | -SLA42-105 | 42 | | 75 | 70 | 85 | 25 | 5.0 |

注：1. フラット付ストレートシャンク刃具を使用する。
2. センタースルーにてご使用の際は、別途お申し付け下さい。

NOTE: 1. For endmill of straight shank flat.
2. Thru-the-tool application is acceptable. Please inform it when ordering.

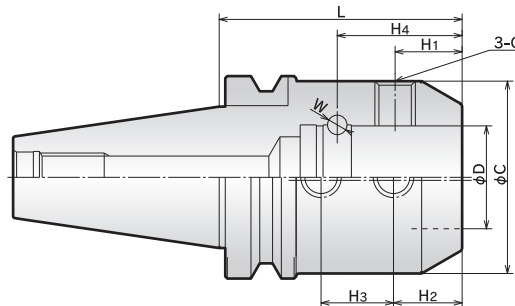
ご注文例 ORDERING EXAMPLE

① BT30 - ② SLA - ③ 20 - ④ 075

① シャンクサイズ Shank Size
② 呼称 Holder's Name
③ 刃具シャンク径φD Cutter's Shank Dia.
④ GL長さ L G.L. Length

サイドロックホルダD型

SIDE LOCK HOLDER (For ANSI type combination shank)

BT_{No}-SLD_D-_L

※BT 2面拘束主軸対応ツールリング (SBT) も用意しております。
Tooling compatible with the BT two-face clamping spindle (SBT) is also available.

| MODEL | φD(H6) | L | φC | H1 | H2 | H3 | H4 | G | φW | N/W (kg) | |
|-------|--------------|------|-----|----|------|------|-------|-------|---------|----------|-----|
| BT50 | -SLD50.8-120 | 50.8 | 120 | 95 | 33.1 | 33.9 | 35.78 | 61.68 | M20×1.5 | 11.18 | 6.6 |

注：ANSI規格のコンビネーションシャンクエンドミル用

NOTE: For ANSI combination shank endmills.

ご注文例 ORDERING EXAMPLE

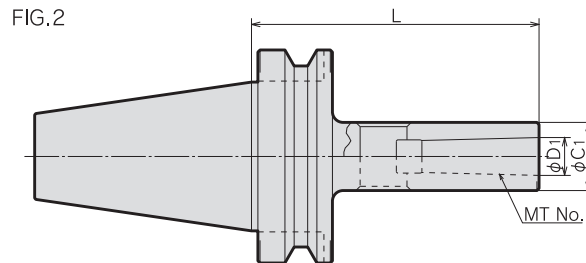
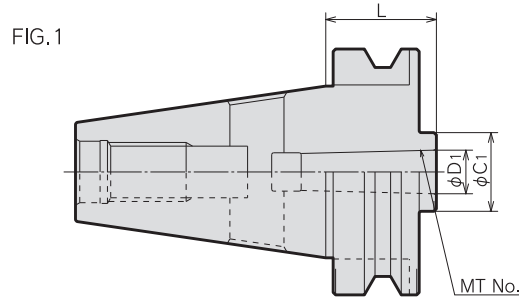
① BT50 - ② SLD - ③ 50.8 - ④ 120

① シャンクサイズ Shank Size
② 呼称 Holder's Name
③ 刃具シャンク径φD Cutter's Shank Dia.
④ GL長さ L G.L. Length

モールステーパホルダA型

MORSE TAPER HOLDER (Type A)

BT^{No.}-MTA^{No.}-L



ドリルシャंकと刃径 DRILL DIA. AND SHANK

| SHANK | | MT1 | MT2 | MT3 | MT4 | MT5 |
|--------------------|--------|------|------|------|------|------|
| ドリル径 DRILL DIA. | 以上MIN. | 2.0 | 14.1 | 23.1 | 32.1 | 50.1 |
| | 以下MAX. | 14.0 | 23.0 | 32.0 | 50.0 | 75.0 |

※BT 2面拘束主軸対応ツーリング (SBT) も用意しております。
Tooling compatible with the BT two-face clamping spindle (SBT) is also available.

| MODEL | FIG. | MT No. | φD1 | L | φC1 | N/W (kg) |
|-------|-----------|--------|--------|--------|-----|----------|
| BT30 | -MTA1-045 | 1 | 12.065 | 45 | 25 | 0.43 |
| | -MTA2-060 | 1 | 17.780 | 60 | 32 | 0.50 |
| | -MTA3-080 | 1 | 23.825 | 80 | 40 | 0.69 |
| BT40 | -MTA1-045 | 1 | 12.065 | 45 | 25 | 1.0 |
| | -120 | 2 | | 120 | | 1.3 |
| | -MTA2-045 | 1 | 17.780 | 45 | 32 | 1.0 |
| | -120 | 2 | | 120 | | 1.5 |
| | -MTA3-075 | 1 | 23.825 | 75 | 40 | 1.2 |
| | -135 | 2 | | 135 | | 1.8 |
| | -MTA4-090 | 1 | 31.267 | 90 | 50 | 1.4 |
| | -165 | 2 | | 165 | | 2.5 |
| BT50 | -MTA1-045 | 1 | 12.065 | 45 | 25 | 3.6 |
| | -120 | 2 | | 120 | | 3.9 |
| | -180 | 2 | | 180 | | 4.2 |
| | -MTA2-045 | 1 | 17.780 | 45 | 32 | 3.6 |
| | -135 | 2 | | 135 | | 4.2 |
| | -180 | 2 | | 180 | | 4.5 |
| | -MTA3-045 | 1 | 23.825 | 45 | 40 | 3.5 |
| | -150 | 2 | | 150 | | 4.5 |
| | -180 | 2 | | 180 | | 4.8 |
| | -MTA4-075 | 1 | 31.267 | 75 | 50 | 3.6 |
| | -180 | 2 | | 180 | | 5.2 |
| | -MTA5-105 | 1 | | 44.399 | | 105 |
| -210 | 2 | 210 | 6.5 | | | |

注：タンク付MTシャंक刃具をご使用下さい。
NOTE: 1. For tongue type Morse taper shank cutting tools.

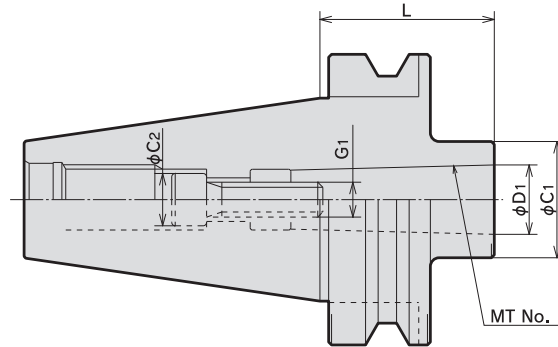
ご注文例 ORDERING EXAMPLE

① BT30 - ② MTA - ③ 1 - ④ 045

① シャックサイズ Shank Size
② 呼称 Holder's Name
③ MT No. MT No.
④ GL長さ L G.L. Length

モールステーパホルダB型

MORSE TAPER HOLDER (Type B)

BT^{No.}-MTB^{No.}-^L

※BT 2面拘束主軸対応ツーリング (SBT) も用意しております。
Tooling compatible with the BT two-face clamping spindle (SBT) is also available.

| MODEL | MT No. | $\phi D1$ | L | $\phi C1$ | $\phi C2$ | G1 | N/W (kg) |
|-------|-----------|-----------|--------|-----------|-----------|-----|----------|
| BT40 | -MTB1-045 | 1 | 12.065 | 45 | 25 | M6 | 1.0 |
| | -MTB2-045 | 2 | 17.780 | 45 | 32 | M10 | 1.0 |
| BT50 | -MTB1-045 | 1 | 12.065 | 45 | 25 | M6 | 3.6 |
| | -MTB2-045 | 2 | 17.780 | 45 | 32 | M10 | 3.6 |
| | -MTB3-060 | 3 | 23.825 | 60 | 40 | M12 | 3.7 |
| | -MTB4-075 | 4 | 31.267 | 75 | 50 | M16 | 3.7 |

注：引ネジ式MTシャンク刃具をご使用下さい。

NOTE: 1.For drawing thread type Morse taper shank cutting tools.

ご注文例 ORDERING EXAMPLE

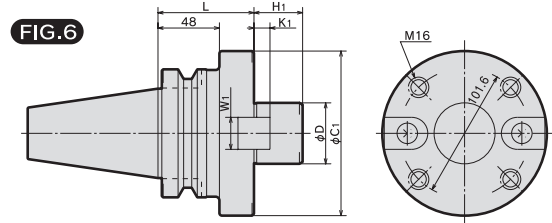
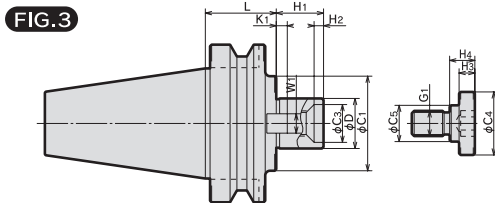
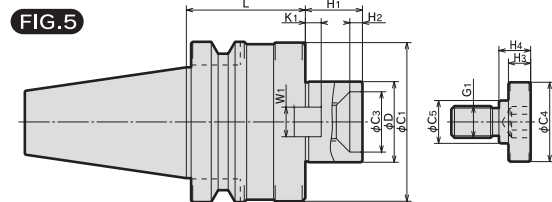
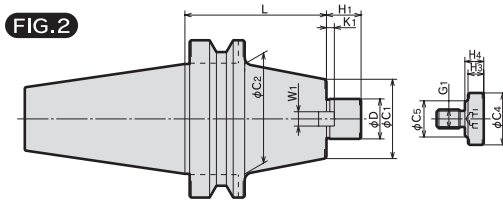
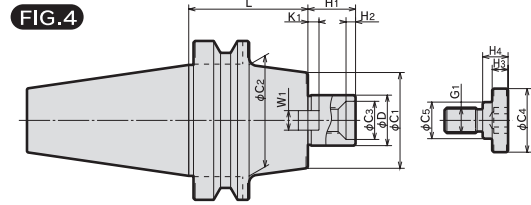
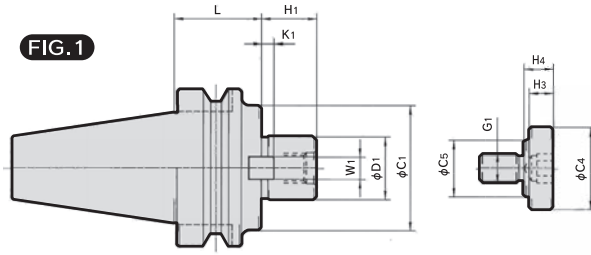
① BT40 - ② MTB ③ 1 - ④ 045

① シャンクサイズ Shank Size
② 呼称 Holder's Name
③ MT No. MT No.
④ GL長さ L G.L. Length

正面フライスアーバA型

FACE MILL ARBOR (Type A)

BT[○]-FMA[○]-[○]-[○]



※BT2面拘束主軸対応ソーリング(SBT)も用意しております。
Tooling compatible with the BT two-face clamping spindle (SBT) is also available.

| MODEL | FIG. | φD(h6) | L | φC1 | φC2 | φC3 | H1 | H2 | KEY | | G1 | CLAMP BOLT | | | | N/W (kg) | | | | | | | | | | | |
|-------|----------------|----------------|--------|-----|-----|-----|------|----|-------|------|-----|------------|-----|-----|----|----------|-----|------|-------|------|-----|-----|----|----|-----|-----|-----|
| | | | | | | | | | W1 | K1 | | φC4 | φC5 | H3 | H4 | | | | | | | | | | | | |
| BT30 | 1 | -FMA22.225-035 | 22.225 | 35 | 40 | - | 18 | - | 8.0 | 4 | M8 | 20 | 15 | 7 | 9 | 0.57 | | | | | | | | | | | |
| | | -FMA25.4-035 | 25.4 | 35 | 50 | - | 22 | - | 9.5 | 5 | M12 | 33 | 23 | 10 | 12 | 0.72 | | | | | | | | | | | |
| BT40 | 1 | -FMA25.4-045 | 25.4 | 45 | 50 | - | 22 | - | 9.5 | 5 | M12 | 33 | 23 | 10 | 12 | 1.4 | | | | | | | | | | | |
| | | | 105 | 60 | | | | | | | | | | | | 2.6 | | | | | | | | | | | |
| | 2 | 105 | 60 | 24 | 30 | 6 | 12.7 | 7 | M16 | 40 | 23 | 10 | 15 | 1.6 | | | | | | | | | | | | | |
| BT50 | 3 | -FMA31.75-045 | 31.75 | 45 | 60 | - | 30 | 6 | 12.7 | 7 | M16 | 40 | 23 | 10 | 16 | 2.6 | | | | | | | | | | | |
| | | | 90 | 24 | | | | | | | | | | | | 30 | 6 | 12.7 | 7 | M16 | 40 | 23 | 10 | 16 | 2.6 | | |
| BT50 | 1 | -FMA38.1-060 | 38.1 | 60 | 80 | - | 34 | 6 | 15.9 | 9 | M20 | 50 | 27 | 14 | 20 | 2.6 | 3.9 | | | | | | | | | | |
| | | | 45 | - | | | | | | | | | | | | | 22 | - | 9.5 | 5 | M12 | 33 | 23 | 10 | 12 | 5.0 | |
| | | | 90 | 70 | | | | | | | | | | | | | 22 | - | 9.5 | 5 | M12 | 33 | 23 | 10 | 12 | 5.0 | |
| | 2 | -FMA25.4-090 | 25.4 | 90 | 50 | 70 | - | 22 | - | 9.5 | 5 | M12 | 33 | 23 | 10 | 12 | 6.4 | | | | | | | | | | |
| | | | 150 | 70 | | | | | | | | | | | | | 22 | - | 9.5 | 5 | M12 | 33 | 23 | 10 | 12 | 6.4 | |
| | 3 | -FMA31.75-045 | 31.75 | 45 | 60 | - | 24 | 30 | 6 | 12.7 | 7 | M16 | 40 | 23 | 10 | 16 | 4.1 | | | | | | | | | | |
| | | | 75 | 70 | | | | | | | | | | | | | 24 | 30 | 6 | 12.7 | 7 | M16 | 40 | 23 | 10 | 16 | 4.9 |
| | | | 105 | 70 | | | | | | | | | | | | | 24 | 30 | 6 | 12.7 | 7 | M16 | 40 | 23 | 10 | 16 | 5.7 |
| | 4 | -FMA38.1-045 | 38.1 | 45 | 80 | - | 28 | 34 | 6 | 15.9 | 9 | M20 | 50 | 27 | 14 | 20 | 4.4 | | | | | | | | | | |
| | | | 75 | 70 | | | | | | | | | | | | | 28 | 34 | 6 | 15.9 | 9 | M20 | 50 | 27 | 14 | 20 | 5.6 |
| 5 | -FMA50.8-045 | 50.8 | 45 | 98 | - | 38 | 36 | 10 | 19.05 | 10 | M24 | 65 | 37 | 14 | 24 | 5.0 | | | | | | | | | | | |
| | | 75 | 100 | | | | | | | | | | | | | 38 | 36 | 10 | 19.05 | 10 | M24 | 65 | 37 | 14 | 24 | 6.7 | |
| | | 75 | 100 | | | | | | | | | | | | | 38 | 36 | 10 | 19.05 | 10 | M24 | 65 | 37 | 14 | 24 | 6.7 | |
| 6 | -FMA47.625-075 | 47.625 | 75 | 128 | - | - | 38 | - | 25.4 | 12.5 | - | - | - | - | - | 8.0 | | | | | | | | | | | |

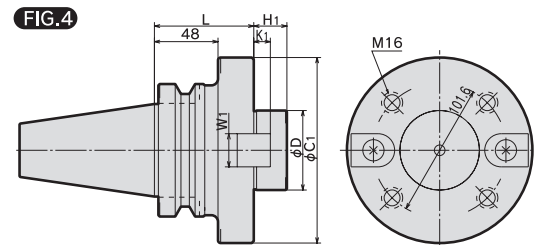
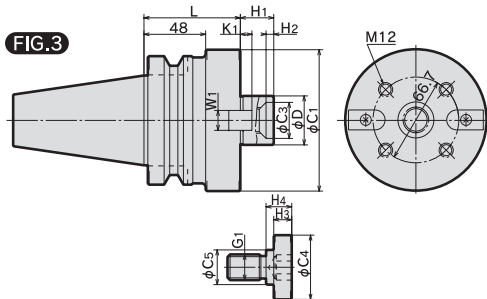
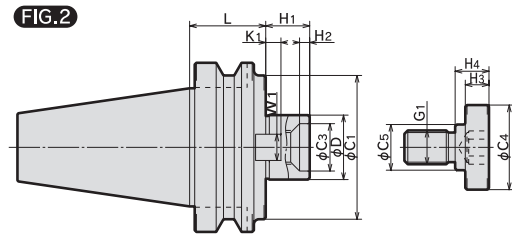
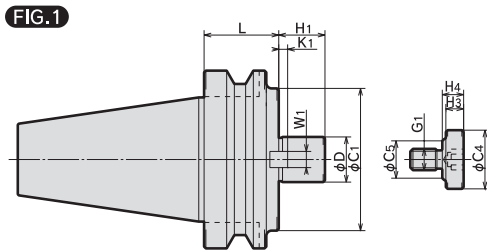
ご注文例 ORDERING EXAMPLE

① BT30 - ② FMA ③ 25.4 - ④ 035

- ① シャンクサイズ Shank Size
- ② 呼称 Name
- ③ インロー径φD φD
- ④ GL長さL G.L. Length

正面フライスアーバB型

FACE MILL ARBOR (Type B)

BT^{No}-FMB^D-^L

※BT 2面拘束主軸対応ツーリング (SBT) も用意しております。
Tooling compatible with the BT two-face clamping spindle (SBT) is also available.

| MODEL | FIG. | φD(h6) | L | φC1 | φC3 | H1 | H2 | KEY | | G1 | CLAMP BOLT | | | | N/W (kg) | |
|-------------|---------------|--------|------|-----|-----|----|----|-----|------|------|------------|-----|----|----|-------------|-----|
| | | | | | | | | W1 | K1 | | φC4 | φC5 | H3 | H4 | | |
| BT40 | -FMB25.4 -060 | 1 | 25.4 | 60 | 80 | - | 26 | - | 9.5 | 5 | M12 | 33 | 23 | 10 | 12 | 1.3 |
| | | | | 105 | | | | | | | | | | | | 3.3 |
| | -FMB38.1 -060 | 2 | 38.1 | 60 | 85 | 28 | 26 | 6 | 15.9 | 9 | M20 | 50 | 27 | 14 | 20 | 2.6 |
| | -FMB27 -060 | 1 | 27 | 60 | 80 | - | 26 | - | 12 | 6 | M12 | 33 | 23 | 10 | 12 | 2.3 |
| | | | | 105 | | | | | | | | | | | | 3.3 |
| -FMB40 -060 | 2 | 40 | 60 | 85 | 28 | 26 | 6 | 16 | 8.5 | M20 | 50 | 27 | 14 | 20 | 2.6 | |
| BT50 | -FMB25.4 -045 | 1 | 25.4 | 45 | 80 | - | 26 | - | 9.5 | 5 | M12 | 33 | 23 | 10 | 12 | 4.1 |
| | | | | 90 | | | | | | | | | | | | 6.1 |
| | | | | 150 | | | | | | | | | | | | 8.3 |
| | -FMB38.1 -045 | 2 | 38.1 | 45 | 85 | 28 | 26 | 6 | 15.9 | 9 | M20 | 50 | 27 | 14 | 20 | 4.4 |
| | | | | 75 | | | | | | | | | | | | 5.7 |
| | | | | 105 | | | | | | | | | | | | 7.0 |
| | -FMB38.1F-075 | 3 | 38.1 | 75 | 110 | 28 | 26 | 6 | 15.9 | 9 | M20 | 50 | 27 | 14 | 20 | 6.6 |
| | -FMB27 -045 | 1 | 27 | 45 | 80 | - | 26 | - | 12 | 6 | M12 | 33 | 23 | 10 | 12 | 4.1 |
| | | | | 90 | | | | | | | | | | | | 5.9 |
| | | | | 150 | | | | | | | | | | | | 8.3 |
| | -FMB40 -045 | 2 | 40 | 45 | 85 | 28 | 26 | 6 | 16 | 8.5 | M20 | 50 | 27 | 14 | 20 | 4.4 |
| | | | | 75 | | | | | | | | | | | | 5.7 |
| | | | | 105 | | | | | | | | | | | | 7.1 |
| | -FMB40F -075 | 3 | 40 | 75 | 110 | 28 | 26 | 6 | 16 | 8.5 | M20 | 50 | 27 | 14 | 20 | 6.7 |
| | -FMB60 -075 | 4 | 60 | 75 | 140 | - | 25 | - | 25.4 | 12.5 | - | - | - | - | - | 8.5 |

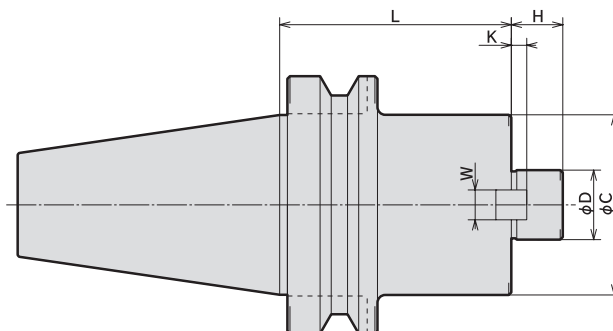
ご注文例 ORDERING EXAMPLE

① BT40 - ② FMB ③ 25.4 - ④ 060

① シャンクサイズ Shank Size
② 呼称 Name
③ インロー径φD φD
④ GL長さL G.L. Length

正面フライスアーバC型

FACE MILL ARBOR (Type C)

BT^{No}-FMC^D-^L

※BT 2面拘束主軸対応ソーリング (SBT) も用意しております。
Tooling compatible with the BT two-face clamping spindle (SBT) is also available.

| MODEL | | φD(h6) | L | φC | H | K | W | CLAMP BOLT | N/W (kg) | | | | | |
|-------------|---------------|--------|-----|----|----|----|---------|------------|----------|----|---|------|---------|-----|
| BT40 | -FMC25.4 -060 | 25.4 | 60 | 70 | 20 | 5 | 9.5 | M12×35L | 2.0 | | | | | |
| | -105 | | 105 | | | | | | 3.1 | | | | | |
| | -FMC38.1 -060 | 38.1 | 60 | | | | | | 85 | 22 | 7 | 15.9 | M16×40L | 2.5 |
| | -105 | | 105 | | | | | | 2.1 | | | | | |
| | -FMC22 -060 | 22 | 60 | | | | | | 45 | 18 | 5 | 10 | M10×30L | 1.5 |
| | -105 | | 105 | | | | | | 2.1 | | | | | |
| -FMC27 -060 | 27 | 60 | 70 | 20 | 6 | 12 | M12×35L | 2.0 | | | | | | |
| -105 | | 105 | 3.1 | | | | | | | | | | | |
| -FMC32 -060 | 32 | 60 | 85 | 22 | 7 | 14 | M16×40L | 2.4 | | | | | | |
| -105 | | 105 | 2.4 | | | | | | | | | | | |
| BT50 | -FMC25.4 -045 | 25.4 | 45 | 70 | 20 | 5 | 9.5 | M12×35L | 4.0 | | | | | |
| | -090 | | 90 | | | | | | 5.4 | | | | | |
| | -150 | | 150 | | | | | | 7.2 | | | | | |
| | -FMC38.1 -045 | 38.1 | 45 | 85 | 22 | 7 | 15.9 | M16×40L | 4.2 | | | | | |
| | -075 | | 75 | | | | | | 5.6 | | | | | |
| | -105 | | 105 | | | | | | 6.9 | | | | | |
| | -FMC22 -060 | 22 | 60 | 45 | 18 | 5 | 10 | M10×30L | 4.1 | | | | | |
| | -105 | | 105 | | | | | | 4.6 | | | | | |
| | -150 | | 150 | | | | | | 5.2 | | | | | |
| | -FMC27 -045 | 27 | 45 | 70 | 20 | 6 | 12 | M12×35L | 4.0 | | | | | |
| | -090 | | 90 | | | | | | 5.4 | | | | | |
| | -150 | | 150 | | | | | | 7.2 | | | | | |
| | -FMC32 -045 | 32 | 45 | 85 | 22 | 7 | 14 | M16×40L | 4.2 | | | | | |
| | -075 | | 75 | | | | | | 5.0 | | | | | |
| | -105 | | 105 | | | | | | 6.8 | | | | | |

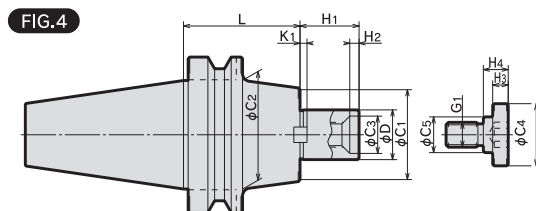
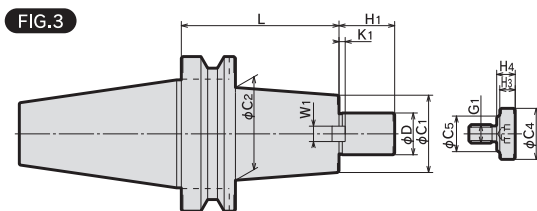
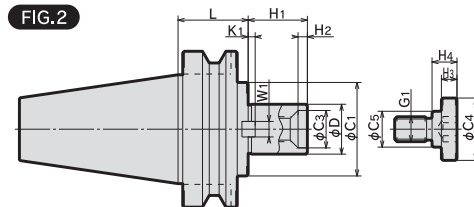
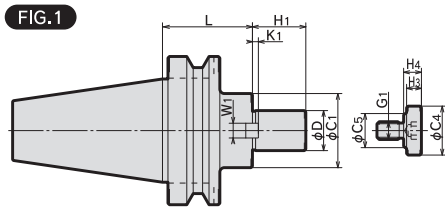
ご注文例 ORDERING EXAMPLE

① BT40 - ② FMC ③ 25.4 - ④ 060

① シャンクサイズ Shank Size
② 呼称 Name
③ インロー径φD φD
④ GL長さ L G.L. Length

シェルエンドミルアーバA型

SHELL MILL ARBOR (Type A)

BT^{No}-SMA^φ-L

※BT2面拘束主軸対応ツーリング(SBT)も用意しております。
Tooling compatible with the BT two-face clamping spindle (SBT) is also available.

| MODEL | FIG. | φD(h6) | L | φC1 | φC2 | φC3 | H1 | H2 | KEY | | G1 | CLAMP BOLT | | | | N/W (kg) | | |
|------------|------------|--------|----------|----------|-----|-----|----|----|-----|-----|-----|------------|-----|----|----|----------|-----|-----|
| | | | | | | | | | W1 | K1 | | φC4 | φC5 | H3 | H4 | | | |
| BT40 | -SMA16-060 | 1 | 16 | 60 | 34 | - | - | 17 | - | 8 | 3 | M8 | 20 | 15 | 7 | 9 | 1.3 | |
| | | | (15.875) | 120 | | | | | | | | | | | | | 1.7 | |
| | -SMA22-060 | 1 | 22 | 60 | 42 | - | - | 27 | - | 8 | 3.5 | M10 | 28 | 18 | 9 | 11 | 1.5 | |
| | | | | (22.225) | | | | | | | | | | | | | 120 | 2.1 |
| | -SMA27-045 | 1 | 27 | 45 | 50 | - | - | 36 | - | 10 | 4 | M12 | 33 | 23 | 10 | 12 | 1.5 | |
| | | | | (25.4) | | | | | | | | | | | | | 105 | 2.4 |
| -SMA32-045 | 4 | 32 | 45 | 60 | - | 24 | 38 | 6 | 10 | 4.5 | M16 | 40 | 23 | 10 | 16 | 1.7 | | |
| | | | (31.75) | | | | | | | | | | | | | 90 | 2.7 | |
| BT50 | -SMA16-075 | 1 | 16 | 75 | 34 | - | - | 17 | - | 8 | 3 | M8 | 20 | 15 | 7 | 9 | 4.0 | |
| | | | (15.875) | 120 | | | | | | | | | | | | | 4.3 | |
| | -SMA22-075 | 1 | 22 | 75 | 42 | - | - | 27 | - | 8 | 3.5 | M10 | 28 | 18 | 9 | 11 | 4.2 | |
| | | | | (22.225) | | | | | | | | | | | | | 120 | 4.7 |
| | | | | 180 | | | | | | | | | | | | | 5.4 | |
| | -SMA27-060 | 1 | 27 | 60 | 50 | - | - | 36 | - | 10 | 4 | M12 | 33 | 23 | 10 | 12 | 4.2 | |
| | | | | (25.4) | | | | | | | | | | | | | 105 | 5.2 |
| | -SMA32-045 | 3 | 32 | 45 | 60 | - | 24 | 38 | 6 | 10 | 4.5 | M16 | 40 | 23 | 10 | 16 | 4.1 | |
| | | | | (31.75) | | | | | | | | | | | | | 75 | 4.9 |
| | -SMA40-045 | 4 | 40 | 45 | 80 | - | 28 | 38 | 8 | 12 | 5 | M20 | 50 | 27 | 14 | 20 | 4.5 | |
| | | | | (38.1) | | | | | | | | | | | | | 75 | 5.7 |

注：()内のインチサイズカット用アーバも、在庫しています。

NOTE: Arbors in () for cutters in inches are in stock.

ご注文例 ORDERING EXAMPLE

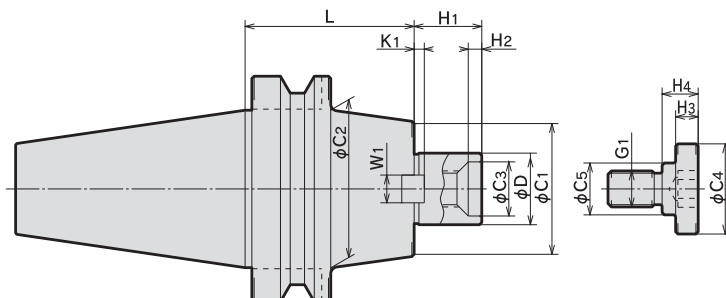
① BT40 - ② SMA - ③ 16 - ④ 060

① シャンクサイズ Shank Size
② 呼称 Name
③ インロー径φD φD
④ GL長さL G.L. Length

シェルエンドミルアーバB型

SHELL MILL ARBOR (Type B)

BT[Ⓝ]-SMB[Ⓝ]-L



※BT 2面拘束主軸対応ツーリング (SBT) も用意しております。
Tooling compatible with the BT two-face clamping spindle (SBT) is also available.

| MODEL | φD(h6) | L | φC1 | φC2 | φC3 | H1 | H2 | KEY | | G1 | CLAMP BOLT | | | | N/W (kg) | |
|-------|-----------------|--------|-----|-----|-----|----|----|-----|------|-----|------------|-----|----|----|----------|-----|
| | | | | | | | | W1 | K1 | | φC4 | φC5 | H3 | H4 | | |
| BT40 | -SMB22.225 -060 | 22.225 | 60 | 45 | - | - | 17 | - | 8 | 3.5 | M10 | 28 | 18 | 9 | 11 | 1.5 |
| | -SMB31.75 -045 | 31.75 | 45 | 60 | - | 24 | 30 | 6 | 12.7 | 4.5 | M16 | 40 | 23 | 10 | 16 | 1.6 |
| | -SMB38.1 -060 | 38.1 | 60 | 80 | - | 28 | 36 | 6 | 15.9 | 5 | M20 | 50 | 27 | 14 | 20 | 2.6 |
| BT50 | -SMB22.225 -060 | 22.225 | 60 | 45 | - | - | 17 | - | 8 | 3.5 | M10 | 28 | 18 | 9 | 11 | 4.1 |
| | | | 120 | | | | | | | | | | | | | 4.8 |
| | | | 180 | | | | | | | | | | | | | 5.6 |
| | -SMB31.75 -045 | 31.75 | 45 | 60 | 70 | 24 | 30 | 6 | 12.7 | 4.5 | M16 | 40 | 23 | 10 | 16 | 4.1 |
| | | | 75 | | | | | | | | | | | | | 4.8 |
| | | | 105 | | | | | | | | | | | | | 5.6 |
| | -SMB38.1 -045 | 38.1 | 45 | 80 | - | 28 | 36 | 6 | 15.9 | 5 | M20 | 50 | 27 | 14 | 20 | 4.4 |
| 75 | | | 5.6 | | | | | | | | | | | | | |

注：超硬ろう付シェルエンドミル用。

NOTE: For shell endmill with brazed T/C tips.

ご注文例 ORDERING EXAMPLE

① BT40 - ② SMB ③ 38.1 - ④ 060

- ① シャンクサイズ Shank Size
- ② 呼称 Name
- ③ インロー径φD φD
- ④ GL長さ L G.L. Length

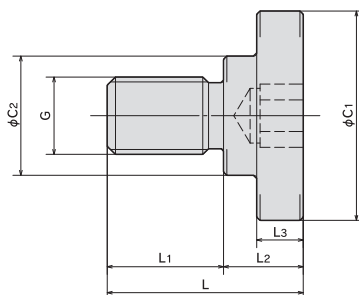
正面フライスアーバ用アクセサリ

ACCESSORIES for FACE MILL ARBOR

アクセサリ
ACCESSORIES

正面フライスアーバ用クランプボルト

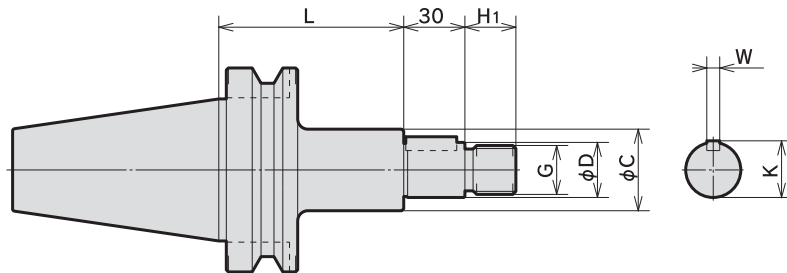
CLAMP BOLT FOR FACE MILL ARBOR



| MODEL | L | L1 | L2 | L3 | φC1 | φC2 | G | ARBOR CODE | N/W (kg) |
|---------|----|----|----|----|-----|-----|-----------|-------------------------------|----------|
| MBA-M8 | 23 | 14 | 9 | 7 | 20 | 15 | M8×P1.25 | FMA22.225 SMA16 | |
| MBA-M10 | 27 | 16 | 11 | 9 | 28 | 18 | M10×P1.5 | SMA22 SMB22.225 | |
| MBA-M12 | 30 | 18 | 12 | 10 | 33 | 23 | M12×P1.75 | FMA,B25.4 FMB27 SMA27 | |
| MBA-M16 | 40 | 24 | 16 | 10 | 40 | 23 | M16×P2.0 | FMA31.75 SMA32 SMB31.75 | |
| MBA-M20 | 50 | 30 | 20 | 14 | 50 | 27 | M20×P2.5 | FMA,B38.1 FMB40 SMA40 SMB38.1 | |
| MBA-M24 | 59 | 35 | 24 | 14 | 65 | 37 | M24×P3.0 | FMA50.8 | |

サイドカッターアーバ

SIDE CUTTER ARBOR

BT^{No}-SCA^D-^L

※BT 2面拘束主軸対応ツーリング (SBT) も用意しております。
Tooling compatible with the BT two-face clamping spindle (SBT) is also available.

| MODEL | φD(h6) | L | φC | H1 | H2 | H3 | G | K | W | N/W (kg) | | |
|-------|----------------|--------|------|----|----|---------------|----------|----------|-------|----------|------|------|
| BT40 | -SCA12.7 -060 | 12.7 | 60 | 20 | 15 | 5 10 20 | 12 | M12×1.25 | — | — | 1.2 | |
| | -SCA15.875-075 | 15.875 | 75 | 26 | 16 | | 13 | M14×1.5 | 17.42 | 3.18 | 1.4 | |
| | -SCA22.225-075 | 22.225 | 75 | 34 | 21 | | 18 | M20×1.5 | 23.82 | | 1.7 | |
| | -SCA25.4 -075 | 25.4 | 75 | 40 | 25 | | 21 | M24×2 | 27.78 | 27.78 | 6.35 | 2.0 |
| | | | | | | | | | | | | -120 |
| | -SCA31.75 -090 | 31.75 | 90 | 46 | 30 | | 26 | M30×2 | 34.92 | 34.92 | 7.92 | 2.6 |
| BT50 | -SCA12.7 -075 | 12.7 | 75 | 20 | 15 | 12 | M12×1.25 | — | — | 3.9 | | |
| | | | -105 | | | | | | | | 105 | 4.0 |
| | -SCA15.875-090 | 15.875 | 90 | 26 | 16 | 13 | M14×1.5 | 17.42 | 17.42 | 3.18 | 4.0 | |
| | | | -120 | | | | | | | | 120 | 4.2 |
| | -SCA22.225-090 | 22.225 | 90 | 34 | 21 | 5 | 18 | M20×1.5 | 23.82 | 23.82 | 4.5 | |
| | | | -135 | | | | | | | | | 135 |
| | -SCA25.4 -090 | 25.4 | 90 | 40 | 25 | 10 | 21 | M24×2 | 27.78 | 27.78 | 6.35 | |
| | | | -135 | | | | | | | | | 135 |
| | -SCA31.75 -090 | 31.75 | 90 | 46 | 30 | 20 | 26 | M30×2 | 34.92 | 34.92 | 7.92 | |
| | | | -135 | | | | | | | | | 135 |
| | -SCA38.1 -090 | 38.1 | 90 | 55 | 36 | 31 | M36×3 | 42.06 | 42.06 | 9.52 | 5.8 | |
| | | | -135 | | | | | | | | | 135 |

ご注文例 ORDERING EXAMPLE

① BT40 - ② SCA ③ 12.7 - ④ 060

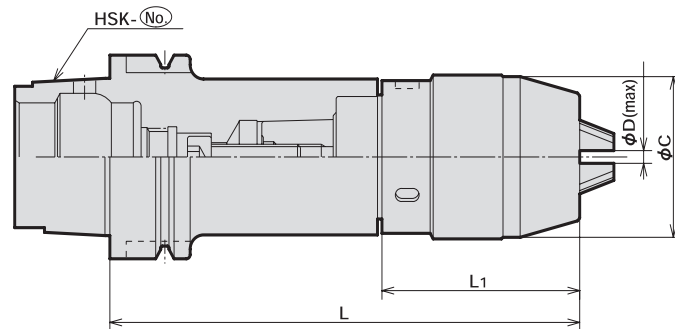
① シャンクサイズ Shank Size
② 呼称 Name
③ インロー径φD φD
④ GL長さ L G.L. Length

ドリルチャック(シャンク一体型)

DRILL CHUCK
 HSKA^{No.}-SDC^{φD}MAX-^L

センタースルー対応
 Thru-the-tool Coolant Available

| 特 長 | FEATURES |
|---|--|
| <ul style="list-style-type: none"> ●従来のドリルチャックよりL寸法が短くコンパクトです。 ●シャンク一体化の為、脱落はありません。 ●高トルク加工の場合、付属レンチで締めることも出来ます。 | <ul style="list-style-type: none"> ●Drill chuck is positively coupled with the holder. ●Short(L length) and compact. ●Clamping force can be increased by the attached wrench. |



| MODEL | φD | L | | L1 | | φC | N/W (kg) | |
|---------|------------|--------|-------|-------|-------|------|----------|-----|
| | | OPEN | CLOSE | OPEN | CLOSE | | | |
| HSKA50 | -SDC08-125 | 0.3~8 | 123 | 130.5 | 48 | 55.5 | 36 | 1.1 |
| | -SDC13-155 | 0.3~13 | 153 | 164.5 | 65.5 | 77 | 50.5 | 1.7 |
| HSKA63 | -SDC08-125 | 0.3~8 | 123 | 130.5 | 48 | 55.5 | 36 | 1.3 |
| | -SDC13-155 | 0.3~13 | 153 | 164.5 | 65.5 | 77 | 50.5 | 1.9 |
| HSKA100 | -SDC08-130 | 0.3~8 | 128 | 135.5 | 48 | 55.7 | 36 | 2.5 |
| | -SDC13-155 | 0.3~13 | 153 | 164.5 | 65.5 | 77 | 50.5 | 3.1 |
| | -SDC13-205 | | 203 | 214.5 | | | | 3.9 |

注：1. クーラントパイプは付属されております。(固定式)
 2. チャックレンチは付属されております。

NOTE: 1. Coolant pipe is included. Each SDC chuck is supplied with a wrench.
 2. Each SDC chuck is supplied with a wrench.

ご注文例 ORDERING EXAMPLE

① HSKA50 - ② SDC - ③ 08 - ④ 125

① シャンクサイズ Shank Size
 ② 呼称 Holder's Name
 ③ Max.φD Max.φD
 ④ GL長さ L G.L. Length

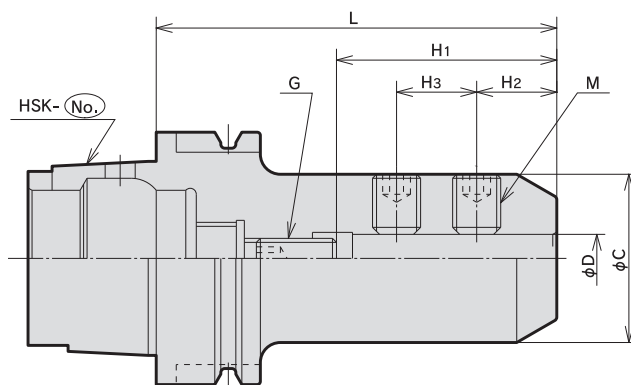
サイドロックホルダA型

SIDE LOCK HOLDER

HSKA^{No.}-SLA^D-L

センタースルー対応

Thru-the-tool Coolant Available



| MODEL | φD(H6) | L | φC | H1 | | H2 | H3 | M | G | N/W (kg) |
|------------|------------|-----|-----|------|------|----|----|-----|-----|----------|
| | | | | MIN. | MAX. | | | | | |
| HSKA50 | -SLA06-075 | 6 | 75 | 30 | 18 | 28 | - | M 6 | M 5 | 0.7 |
| | -SLA08-080 | 8 | 80 | 35 | 23 | 33 | | M 8 | M 6 | 0.8 |
| | -SLA10-090 | 10 | 90 | 35 | 25 | 38 | | M10 | M 8 | 0.9 |
| | -SLA12-100 | 12 | 100 | 42 | 30 | 43 | | M12 | M10 | 1.1 |
| | -SLA16-120 | 16 | 120 | 48 | 35 | 50 | | M14 | M12 | 1.7 |
| | -SLA20-140 | 20 | 140 | 50 | 55 | 70 | | M16 | | 2.0 |
| HSKA63 | -SLA06-075 | 6 | 75 | 30 | 18 | 28 | - | M 6 | M 5 | 0.9 |
| | -SLA08-080 | 8 | 80 | 35 | 23 | 33 | | M 8 | M 6 | 1.0 |
| | -SLA10-090 | 10 | 90 | 35 | 25 | 38 | | M10 | M 8 | 1.1 |
| | -SLA12-100 | 12 | 100 | 42 | 30 | 43 | | M12 | M10 | 1.3 |
| | -SLA16-100 | 16 | | 48 | 35 | 50 | | M14 | M12 | 1.6 |
| | -SLA20-120 | 20 | 120 | 50 | 55 | 70 | | M16 | | 2.5 |
| | -SLA25-130 | 25 | 130 | 61 | 55 | 70 | | 24 | M18 | 3.0 |
| | -SLA32-140 | 32 | 140 | 72 | 65 | 80 | | 24 | 28 | M20 |
| HSKA100 | -SLA06-085 | 6 | 85 | 30 | 18 | 28 | - | M 6 | M 5 | 2.2 |
| | -SLA08-090 | 8 | 90 | 35 | 23 | 33 | | M 8 | M 6 | 2.3 |
| | -SLA10-100 | 10 | 100 | 42 | 25 | 38 | | M10 | M 8 | 2.4 |
| | -SLA12-110 | 12 | | 30 | 43 | 20 | | M12 | M10 | 2.6 |
| | -SLA16-110 | 16 | 48 | 35 | 50 | 24 | | M14 | M12 | 2.9 |
| | -SLA20-130 | 20 | 130 | 50 | 55 | 70 | | M16 | | 3.8 |
| | -SLA25-140 | 25 | 140 | 61 | 55 | 70 | | 24 | | 25 |
| -SLA32-150 | 32 | 150 | 72 | 65 | 80 | 24 | 28 | M20 | 5.5 | |

注：1. クーラントパイプは付属されております。(固定式)
2. フラット付ストレートシャンク刃具をご使用下さい。

NOTE: 1. Coolant pipe is included.
2. For endmill of straight shank with flat.

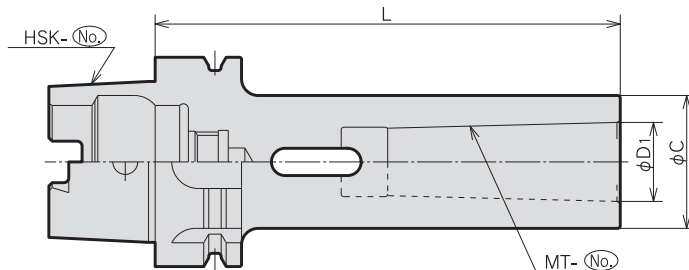
ご注文例 ORDERING EXAMPLE

① HSKA50 - ② SLA - ③ 06 - ④ 075

① シャンクサイズ Shank Size
② 呼称 Holder's Name
③ 刃具シャンク径φD Cutter's Shank Dia.
④ GL長さ L G.L. Length

モールステーパホルダA型

MORSE TAPER HOLDER (Type A)

HSKA^{No.}-MTA^{No.}-L

| MODEL | MT No. | φD1 | L | φC | N/W (kg) | |
|---------|-----------|-----|--------|-----|----------|-----|
| HSKA50 | -MTA1-100 | 1 | 12.065 | 100 | 25 | 1.2 |
| | -MTA2-120 | 2 | 17.780 | 120 | 32 | 1.4 |
| | -MTA3-140 | 3 | 23.825 | 140 | 40 | 1.5 |
| HSKA63 | -MTA1-100 | 1 | 12.065 | 100 | 25 | 1.6 |
| | -MTA2-120 | 2 | 17.780 | 120 | 32 | 1.8 |
| | -MTA3-140 | 3 | 23.825 | 140 | 40 | 2.2 |
| | -MTA4-160 | 4 | 31.267 | 160 | 50 | 2.5 |
| HSKA100 | -MTA2-120 | 2 | 17.780 | 120 | 32 | 3.0 |
| | -MTA3-140 | 3 | 23.825 | 140 | 40 | 3.4 |
| | -MTA4-160 | 4 | 31.267 | 160 | 50 | 3.7 |
| | -MTA5-200 | 5 | 44.399 | 200 | 65 | 4.9 |

※:1. クーラントパイプは付属されております。(固定式)
2. タング付MTシャンク刃具をご使用下さい。

NOTE :1. Coolant pipe is included.
2. For tongue type Morse taper shank cutting tools.

ご注文例 ORDERING EXAMPLE

① HSKA50 - ② MTA - ③ 1 - ④ 10

① シャンクサイズ Shank Size
② 呼称 Holder's Name
③ MT No. MT No.
④ GL長さ L G.L. Length

正面フライスアーバA型

FACE MILL ARBOR(Type A)

HSKA[Ⓜ]No.-FMA[Ⓜ]⌀-L

FIG.1

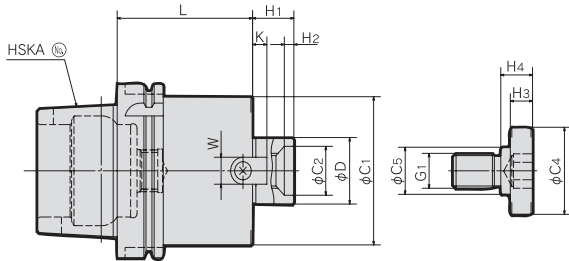


FIG.2

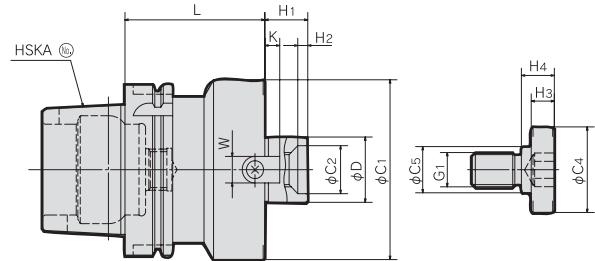
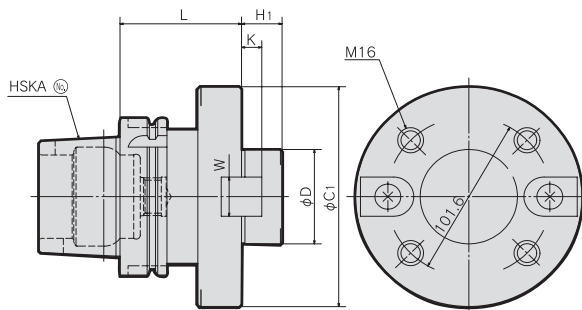


FIG.3



| MODEL | FIG. | ϕD(h6) | L | ϕC1 | ϕC2 | H1 | H2 | KEY | | G1 | CLAMP BOLT | | | | N/W (kg) | |
|---------|----------------|--------|--------|-----|-------|----|----|-----|-------|------|------------|-----|----|----|----------|-----|
| | | | | | | | | W | K | | ϕC4 | ϕC5 | H3 | H4 | | |
| HSKA50 | -FMA22.225-045 | 1 | 22.225 | 45 | 40 | - | 18 | - | 8.0 | 4 | M8 | 20 | 15 | 7 | 9 | 0.6 |
| | -FMA25.4-060 | 2 | 25.4 | 60 | 50 | - | 22 | - | 9.5 | 5 | M12 | 33 | 23 | 10 | 12 | 0.8 |
| HSKA63 | -FMA25.4-060 | 1 | 25.4 | 60 | 50 | - | 22 | - | 9.5 | 5 | M12 | 33 | 23 | 10 | 12 | 1.2 |
| | -FMA31.75-060 | 2 | 31.75 | | 60 | 24 | 30 | 6 | 12.7 | 7 | M16 | 40 | 23 | | 16 | 1.4 |
| | -FMA38.1-060 | | 38.1 | | 80 | 28 | 34 | | 15.9 | 9 | M20 | 50 | 27 | | 14 | 20 |
| HSKA100 | -FMA25.4-060 | 1 | 25.4 | 60 | 50 | - | 22 | - | 9.5 | 5 | M12 | 33 | 23 | 10 | 12 | 2.5 |
| | -FMA31.75-060 | | 31.75 | | 60 | 24 | 30 | 6 | 12.7 | 7 | M16 | 40 | 23 | | 16 | 2.8 |
| | -FMA38.1-060 | | 38.1 | | 80 | 28 | 34 | | 15.9 | 9 | M20 | 50 | 27 | | 14 | 20 |
| | -FMA50.8-075 | 2 | 50.8 | 75 | 100 | 38 | 36 | 10 | 19.05 | 10 | M24 | 65 | 37 | 14 | 24 | 4.9 |
| | -FMA47.625-075 | 3 | 47.625 | | 128.6 | - | 38 | - | 25.4 | 12.5 | - | - | - | | - | - |

※:1.クーラントパイプは付属されております。(固定式)

NOTE :1. Coolant pipe is included.

ご注文例 ORDERING EXAMPLE

| | | | | | |
|--------|-----|------|-----|---|-------------|
| ① | ② | ③ | ④ | ① | Shank Size |
| HSKA63 | FMA | 25.4 | 060 | ② | Name |
| | | | | ③ | φD |
| | | | | ④ | G.L. Length |

HSKAシリーズ 正面フライスアーバB型

FACE MILL ARBOR(Type B)

HSKA(No.)-FMB(φ)-L

FIG.1

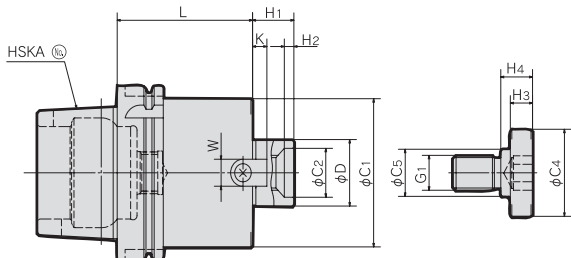


FIG.2

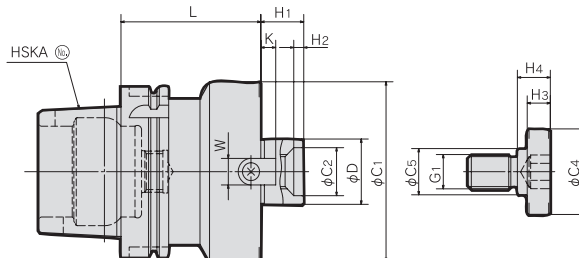


FIG.3

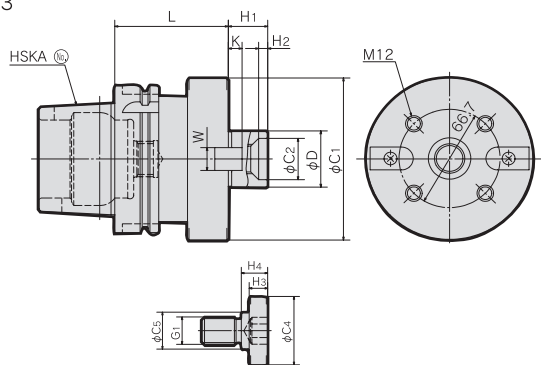
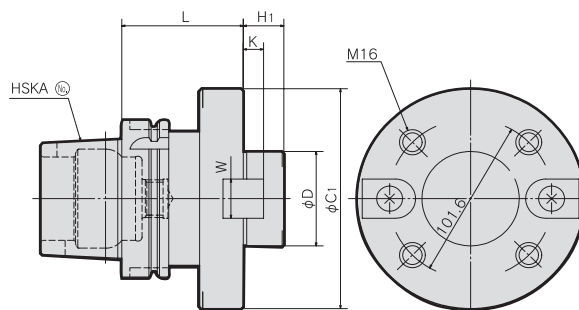


FIG.4



| MODEL | FIG. | φD(h6) | L | φC1 | φC2 | H1 | H2 | KEY | | G1 | CLAMP BOLT | | | | N/W (kg) | |
|---------|------|--------|----|-----|-----|----|----|------|------|------|------------|-----|----|----|----------|-----|
| | | | | | | | | W | K | | φC4 | φC5 | H3 | H4 | | |
| HSKA63 | 2 | 25.4 | 60 | 80 | — | 26 | — | 9.5 | 5 | M12 | 33 | 23 | 10 | 12 | 1.7 | |
| | | 38.1 | | 85 | 28 | | 6 | 15.9 | 9 | M20 | 50 | 27 | 14 | 20 | 1.8 | |
| | | 27 | | 80 | — | | — | 12 | 6 | M12 | 33 | 23 | 10 | 12 | 1.7 | |
| | | 40 | | 85 | 28 | | 6 | 16 | 8.5 | M20 | 50 | 27 | 14 | 20 | 1.8 | |
| HSKA100 | 1 | 25.4 | 60 | 80 | — | 26 | — | 9.5 | 5 | M12 | 33 | 23 | 10 | 12 | 2.9 | |
| | | 38.1 | 75 | 85 | 28 | | 6 | 15.9 | 9 | M20 | 50 | 27 | 14 | 20 | 3.5 | |
| | 2 | 38.1 | 75 | 110 | 28 | | — | — | — | — | — | — | — | — | — | 4.8 |
| | | 27 | | 60 | 80 | | — | — | 12 | 6 | M12 | 33 | 23 | 10 | 12 | 2.9 |
| | 1 | 40 | 60 | 75 | 85 | 28 | 6 | 16 | 8.5 | M20 | 50 | 27 | 14 | 20 | 3.5 | |
| | | | | | | | | | | | | | | | | 110 |
| | 3 | 4 | 60 | 75 | 140 | — | 25 | — | 25.4 | 12.5 | — | — | — | — | — | 6.8 |

※:1. クーラントパイプは付属されております。(固定式)

NOTE :1. Coolant pipe is included.

ご注文例 ORDERING EXAMPLE

| | | | | | | | |
|----------|---------|--------|---------|-------------------------|--------------|------------------|-------------------------|
| ① HSKA63 | ② - FMB | ③ 38.1 | ④ - O60 | ① シャンクサイズ Shank Size | ② 呼称 Name | ③ インロー径 φD φD | ④ GL長さ L G.L. Length |
|----------|---------|--------|---------|-------------------------|--------------|------------------|-------------------------|

正面フライスアーバC型

FACE MILL ARBOR(Type C)

HSKA[Ⓔ]-FMC[Ⓓ]-L

FIG.1

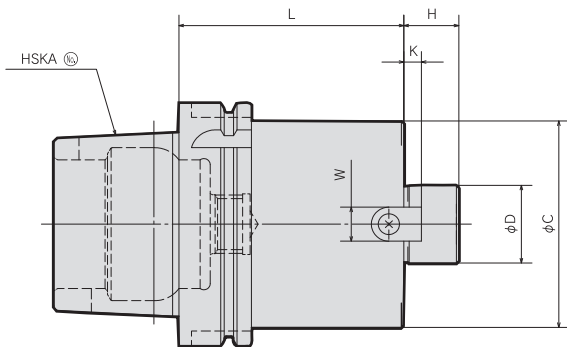
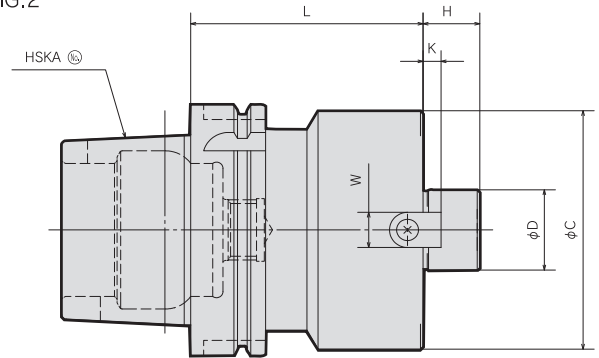


FIG.2



| MODEL | FIG. | φD(h6) | L | φC | H | KEY | | CLAMP BOLT | N/W (kg) | |
|---------|--------------|--------|----|----|----|------|----|------------|-----------|-----|
| | | | | | | W | K | | | |
| HSKA63 | -FMC25.4-060 | 2 | 60 | 70 | 20 | 9.5 | 5 | M12 × 35L | 1.5 | |
| | -FMC38.1-060 | | | 85 | 22 | 15.9 | 7 | M16 × 40L | 0.8 | |
| | -FMC22 -060 | 1 | | 45 | 18 | 10 | 5 | M10 × 30L | 1.1 | |
| | -FMC27 -060 | | | 2 | 70 | 20 | 12 | 6 | M12 × 35L | 1.5 |
| | -FMC32 -060 | | | | 85 | 22 | 14 | 7 | M16 × 40L | 1.8 |
| HSKA100 | -FMC25.4-060 | 1 | 60 | 70 | 20 | 9.5 | 5 | M12 × 35L | 2.9 | |
| | -FMC38.1-060 | | | 85 | 22 | 15.9 | 7 | M16 × 40L | 3.5 | |
| | -FMC22 -060 | | | 45 | 18 | 10 | 5 | M10 × 30L | 2.4 | |
| | -FMC27 -060 | | | 70 | 20 | 12 | 6 | M12 × 35L | 3.0 | |
| | -FMC32 -060 | | | 85 | 22 | 14 | 7 | M16 × 40L | 3.4 | |

※:1. クーラントパイプは付属されております。(固定式)

NOTE :1. Coolant pipe is included.

ご注文例 ORDERING EXAMPLE

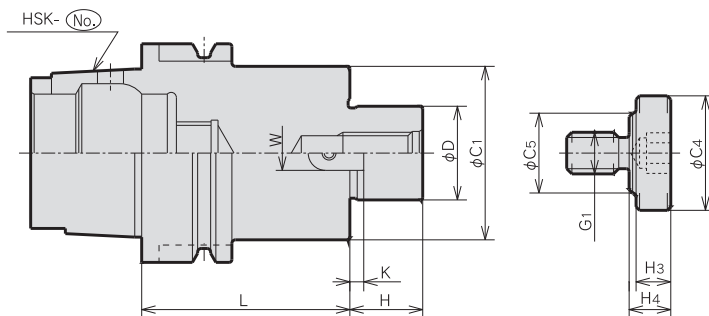
① HSKA63 - ② FMC - ③ 22 - ④ 060

① シャンクサイズ Shank Size
② 呼称 Name
③ インロー径 φD φD
④ GL長さ L G.L. Length

シェルエンドミルアーバA型

SHELL MILL ARBOR (Type A)

HSKA^{No.}-SMA^D-^L



| MODEL | φD(h6) | L | φC1 | H | KEY | | G1 | CLAMP BOLT | | | | N/W (kg) | |
|--------------------|--------------------|-----|-----|-------|------|------|-----|------------|-----|----|-----|----------|-----|
| | | | | | W | K | | φC4 | φC5 | H3 | H4 | | |
| HSKA50 | -SMA16-060 -120 | 60 | 34 | 17 | 7.95 | 3 | M 8 | 20 | 15 | 7 | 9 | 0.6 | |
| | | 120 | | | | | | | | | | 1.0 | |
| | -SMA22-060 -120 | 60 | 42 | 27 | | 3.5 | M10 | 28 | 18 | 9 | 11 | 1.0 | |
| | | 120 | | | | | | | | | | 1.7 | |
| | -SMA27-060 -120 | 60 | 50 | 36 | | 9.95 | 4 | M12 | 33 | 23 | 10 | 12 | 1.3 |
| | | 120 | | | | | | | | | | | 2.2 |
| -SMA32-060 -120 | 60 | 60 | 38 | 4.5 | M16 | | 40 | 23 | 10 | 16 | 1.7 | | |
| | 120 | | | | | | | | | | 2.9 | | |
| HSKA63 | -SMA16-060 -120 | 60 | 34 | 17 | 7.95 | | 3 | M 8 | 20 | 15 | 7 | 9 | 0.8 |
| | | 120 | | | | | | | | | | | 1.2 |
| | -SMA22-060 -120 | 60 | 42 | 27 | | 3.5 | M10 | 28 | 18 | 9 | 11 | 1.1 | |
| | | 120 | | | | | | | | | | 1.8 | |
| | -SMA27-060 -120 | 60 | 50 | 36 | | 9.95 | 4 | M12 | 33 | 23 | 10 | 12 | 1.4 |
| | | 120 | | | | | | | | | | | 2.3 |
| -SMA32-060 -120 | 60 | 60 | 38 | 4.5 | M16 | | 40 | 23 | 10 | 16 | 1.8 | | |
| | 120 | | | | | | | | | | 3.1 | | |
| HSKA100 | -SMA22-060 -120 | 60 | 42 | 27 | 7.95 | | 3.5 | M10 | 28 | 18 | 9 | 11 | 2.3 |
| | | 120 | | | | | | | | | | | 2.7 |
| | -SMA27-060 -120 | 60 | 50 | 36 | | 4 | M12 | 33 | 23 | 10 | 12 | 2.8 | |
| | | 120 | | | | | | | | | | 3.7 | |
| | -SMA32-060 -120 | 60 | 60 | 38 | | 4.5 | M16 | 40 | 23 | 10 | 16 | 3.0 | |
| | | 120 | | | | | | | | | | 4.3 | |
| -SMA40-060 -120 | 60 | 80 | 38 | 11.95 | 4.5 | M20 | 50 | 27 | 14 | 20 | 3.0 | | |
| | 120 | | | | | | | | | | 5.4 | | |

※:1. クーラントパイプは付属されております。(固定式)

NOTE :1. Coolant pipe is included.

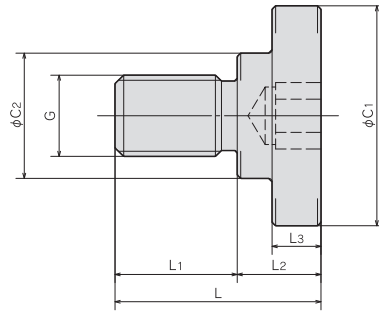
ご注文例 ORDERING EXAMPLE

① HSKA50 - ② SMA - ③ 16 - ④ 060

① シャンクサイズ Shank Size
② 呼称 Name
③ インロー径 φD φD
④ GL長さ L G.L. Length

正面フライスアーバ用クランプボルト

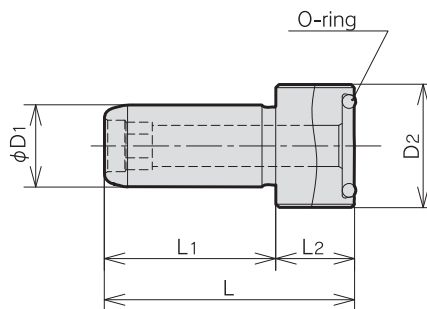
CLAMP BOLT FOR FACE MILL ARBOR



| MODEL | L | L1 | L2 | L3 | φC1 | φC2 | G | ARBOR CODE | N/W (kg) |
|---------|----|----|----|----|-----|-----|-------------|-------------------------------|----------|
| MBA-M8 | 23 | 14 | 9 | 7 | 20 | 15 | M8 × P1.25 | FMA22.225 SMA16 | |
| MBA-M10 | 27 | 16 | 11 | 9 | 28 | 18 | M10 × P1.5 | SMA22 SMB22.225 | |
| MBA-M12 | 30 | 18 | 12 | 10 | 33 | 23 | M12 × P1.75 | FMA,B25.4 FMB27 SMA27 | |
| MBA-M16 | 40 | 24 | 16 | 10 | 40 | 23 | M16 × P2.0 | FMA31.75 SMA32 SMB31.75 | |
| MBA-M20 | 50 | 30 | 20 | 14 | 50 | 27 | M20 × P2.5 | FMA,B38.1 FMB40 SMA40 SMB38.1 | |
| MBA-M24 | 59 | 35 | 24 | 14 | 65 | 37 | M24 × P3.0 | FMA50.8 | |

<HSK シャンク> クーラントパイプ

<HSK SHANK> COOLANT PIPE



| MODEL | HSK No. | D1 | D2 | L | L1 | L2 | O-ring | N/W (kg) |
|---------|---------|----|---------|------|------|------|--------|----------|
| CLP-032 | HSK32 | 6 | M10x1.0 | 26 | 20.5 | 5.5 | P4 | |
| CLP-040 | HSK40 | 8 | M12X1.0 | 29.5 | 22 | 7.5 | P6 | |
| CLP-050 | HSK50 | 10 | M16X1.0 | 33 | 23.5 | 9.5 | P9 | |
| CLP-063 | HSK63 | 12 | M18X1.0 | 36.5 | 25 | 11.5 | P11 | |
| CLP-080 | HSK80 | 14 | M20X1.5 | 40 | 26.5 | 13.5 | P12 | |
| CLP-100 | HSK100 | 16 | M24x1.5 | 44 | 28.5 | 15.5 | P15 | |

ご注文例 ORDERING EXAMPLE

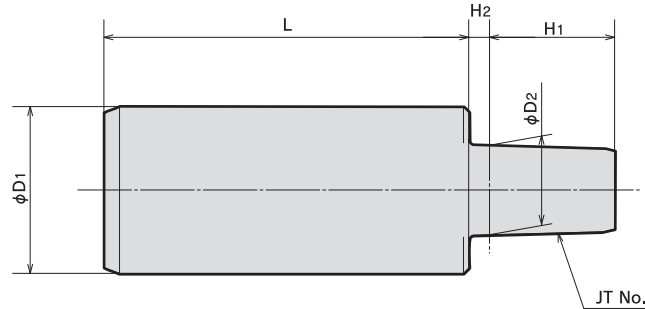
① CLP - ② 032

① 呼称 Name
③ HSK No. HSK No.

ドリルチャックアーバ

JACOBS TAPER ARBOR

DI-J(No.)



| MODEL | JT No. | φD1 | φD2 | L | H1 | H2 | N/W (kg) |
|-------|--------|-----|--------|----|----|----|----------|
| 20-J6 | 6 | 20 | 17.170 | 60 | 24 | 4 | 0.19 |
| 25-J6 | 6 | 25 | 17.170 | 80 | 24 | 4 | 0.35 |
| 32-J6 | 6 | 32 | 17.170 | 80 | 24 | 4 | 0.55 |
| -J3 | 3 | | 20.599 | | 28 | 5 | 0.59 |
| 42-J6 | 6 | 42 | 17.170 | 80 | 24 | 4 | 0.91 |

注：1. ドリルチャックは付属していません。別途お求め下さい。

NOTE: 1. Drill chuck is sold separately.

ご注文例 ORDERING EXAMPLE

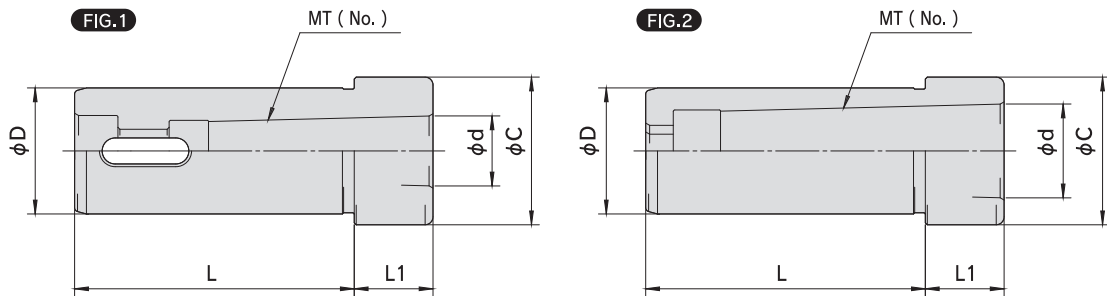
① 20 - ② J ③ 6

① シャンクサイズφD1 Shank Size φD1
② 呼称 Name
③ JT No. JT No.

モールステーパコレット

MORSE TAPER COLLET

DI-MT(No.)



| MODEL | FIG. | φD | L | L1 | φC | MT | | N/W (kg) | |
|--------|------|----|----|--------|------|--------|--------|----------|--------|
| | | | | | | MT No. | φd | | |
| 20-MT1 | 1 | 20 | 56 | 20 | 23.5 | 1 | 12.065 | 0.16 | |
| -MT2 | | | 58 | 35 | | 2 | 17.780 | 0.13 | |
| 25-MT1 | | 25 | 66 | 15 | | 31 | 1 | 12.065 | 0.27 |
| -MT2 | | | 73 | 20 | | | 2 | 17.780 | 0.24 |
| 32-MT1 | 2 | 32 | 66 | 15 | 37.5 | | 1 | 12.065 | 0.47 |
| -MT2 | | | 71 | 20 | | | 2 | 17.780 | 0.46 |
| -MT3 | | | | | | 3 | 23.825 | 0.35 | |
| 42-MT1 | 1 | 42 | 76 | 20 | | 47.5 | 1 | 12.065 | 1.02 |
| -MT2 | | | 77 | 15 | | | 2 | 17.780 | 0.93 |
| -MT3 | 85 | | | | | | 30 | 3 | 23.825 |
| -MT4 | | | 4 | 31.267 | 0.75 | | | | |

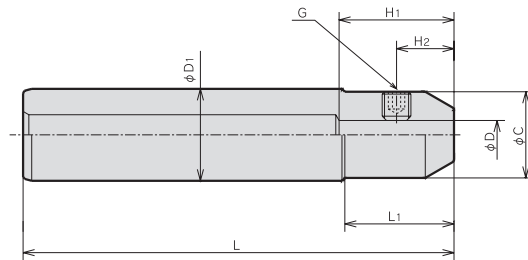
ご注文例 ORDERING EXAMPLE

① 20 - ② MT ③ 1

① シャンクサイズφD Shank Size φD
② 呼称 Name
③ MT No. MT No.

サイドロックアーバ

SIDE LOCK ARBOR

ST^①-S^②-L^④

| MODEL | φD1 | φD(H6) | L | L1 | φC | H1 | H2 | G | N/W (kg) |
|-------|-----|----------|-----|----|----|----|----|------|----------|
| ST25 | 25 | -S06-120 | 120 | 30 | 20 | 30 | 13 | M6 | 0.38 |
| | | -S08-120 | | | | | 15 | | 0.37 |
| | | -S10-120 | | | | | 20 | | 0.42 |
| ST32 | 32 | -S06-150 | 150 | 38 | 20 | 30 | 13 | M6 | 0.72 |
| | | -S08-150 | | | | | 15 | | 0.72 |
| | | -S10-150 | | | | | 20 | | 0.75 |
| | | -S12-150 | | | | | 32 | 0.77 | |
| | | -S12-150 | | | | | — | — | — |

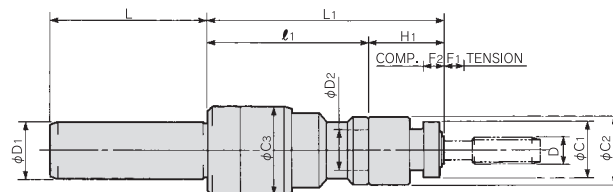
ご注文例 ORDERING EXAMPLE

① ST32 - ② S - ③ 06 - ④ 150

- ① シャンクサイズφD1 Shank Size
② 呼称 Holder's Name
③ 刃具シャンク径 φD Cutter's Shank Dia.
④ L1 L1

タップホルダ(正転式)

TAP HOLDER (Clockwise Rotation)

ST^①-TPC^②-L^④

| MODEL | φD1 | φD2 | L | L1 | ℓ1 | φC1 | φC2 | φC3 | H1 | F1 | F2 | D | TAP COLLET CODE | N/W (kg) |
|-------|-----|------------|-----|-----|-----|-----|-----|-----|----|----|----|---------|---------------------|----------|
| ST32 | 32 | -TPC20-150 | 112 | 150 | 105 | 32 | 40 | 47 | 45 | 15 | 15 | M 4-M14 | TCC20- ^① | 1.5 |
| | | -TPC29-175 | | 175 | 120 | 45 | 55 | 63 | 55 | | | M12-M27 | TCC29- ^① | 2.5 |
| ST42 | 42 | -TPC20-150 | 117 | 150 | 105 | 32 | 40 | 47 | 45 | | | M 4-14 | TCC20- ^① | 2.1 |
| | | -TPC29-175 | | 175 | 120 | 45 | 55 | 63 | 55 | | | M12-M27 | TCC29- ^① | 3.0 |

ご注文例 ORDERING EXAMPLE

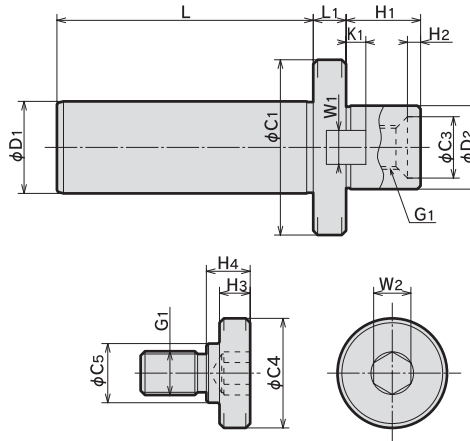
① ST32 - ② TPC - ③ 20 - ④ 150

- ① シャンクサイズ φD1 Shank Size φD1
② 呼称 Name
③ Max.φD2 Max.φD2
④ L1 L1

正面フライスアーバA型

FACE MILL ARBORS (Type A)

ST①-FMA②



| MODEL | φD1 | φD2(h6) | L | L1 | φC1 | φC3 | H1 | H2 | KEY | | G1 | CLAMP BOLT | | | | | CLAMP BOLT | N/W (kg) | |
|-------|-----|-----------|-------|-----|-----|-----|----|----|-----|------|----|------------|-----|----|----|----|------------|----------|-----|
| | | | | | | | | | W1 | K1 | | φC4 | φC5 | H3 | H4 | W2 | | | |
| ST32 | 32 | -FMA25.4 | 25.4 | 112 | 15 | 50 | - | 22 | - | 9.5 | 5 | M12 | 33 | 23 | 10 | 12 | 10 | MBA-M12 | 1.1 |
| | | -FMA31.75 | 31.75 | | 15 | 60 | 24 | 30 | 6 | 12.7 | 7 | M16 | 40 | 23 | 10 | 16 | 14 | -M16 | 1.3 |
| | | -FMA38.1 | 38.1 | | 18 | 80 | 28 | 34 | 6 | 15.9 | 9 | M20 | 50 | 27 | 14 | 20 | 17 | -M20 | 1.9 |
| ST42 | 42 | -FMA25.4 | 25.4 | 117 | 15 | 50 | - | 22 | - | 9.5 | 5 | M12 | 33 | 23 | 10 | 12 | 10 | MBA-M12 | 1.7 |
| | | -FMA31.75 | 31.75 | | 15 | 60 | 24 | 30 | 6 | 12.7 | 7 | M16 | 40 | 23 | 10 | 16 | 14 | -M16 | 1.9 |
| | | -FMA38.1 | 38.1 | | 18 | 80 | 28 | 34 | 6 | 15.9 | 9 | M20 | 50 | 27 | 14 | 20 | 17 | -M20 | 2.5 |
| | | -FMA50.8 | 50.8 | | 20 | 100 | 38 | 36 | 10 | 19.0 | 10 | M24 | 65 | 37 | 14 | 24 | 17 | -M24 | 3.4 |

ご注文例 ORDERING EXAMPLE

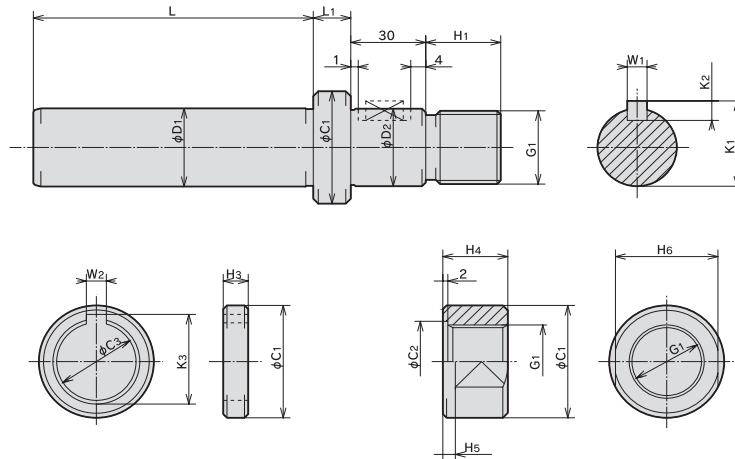
① シャンクサイズφD1 Shank Size φD1
 ② 呼称 Name
 ③ インロー径φD2 φD2

ST32 - FMA - 25.4

サイドカッターアーバ

SIDE CUTTER ARBOR

ST①-SCA②-④



| MODEL | φD1 | φD2(h6) | L | L1 | | φC1 | φC2 | φC3 | H1 | H3 | H4 | H5 | H6 | G1×P | W1 | W2 | K1 | K2 | K3 | N/W (kg) | | |
|-------|-----|------------|--------|-----------|--------|-----|-----|-----|----|--------|----|----|----|------|----|---------|------|------|-------|----------|------|-----|
| | | | | STAN-DARD | OPTION | | | | | | | | | | | | | | | | | |
| ST32 | 32 | -SCA15.875 | 15.875 | 112 | 15 | 30 | 60 | 26 | 17 | 15.875 | 16 | 5 | 13 | 3 | 22 | M14×1.5 | 3.18 | 3.18 | 17.42 | 3.18 | 17.7 | 1.0 |
| | | -SCA22.225 | 22.225 | | | | | 34 | 23 | 22.225 | 21 | | 18 | 4 | 30 | M20×1.5 | 3.18 | 3.18 | 23.82 | 3.18 | 24.1 | 1.2 |
| | | -SCA25.4 | 25.4 | | | | | 40 | 28 | 25.4 | 25 | | 21 | 4 | 32 | M24×2 | 6.35 | 6.35 | 27.78 | 6.35 | 28.1 | 1.4 |
| | | -SCA31.75 | 31.75 | | | | | 46 | 33 | 31.75 | 30 | | 26 | 5 | 41 | M30×2 | 7.92 | 7.92 | 34.92 | 7.92 | 35.2 | 1.7 |
| ST42 | 42 | -SCA25.4 | 25.4 | 117 | 15 | 30 | 60 | 40 | 28 | 25.4 | 25 | 20 | 21 | 4 | 32 | M24×2 | 6.35 | 6.35 | 27.78 | 6.35 | 28.1 | 2.0 |
| | | -SCA31.75 | 31.75 | | | | | 46 | 33 | 31.75 | 30 | | 26 | 5 | 41 | M30×2 | 7.93 | 7.92 | 34.92 | 7.92 | 35.2 | 2.3 |
| | | -SCA38.1 | 38.1 | | | | | 55 | 41 | 38.1 | 36 | | 31 | 5 | 46 | M36×3 | 9.52 | 9.52 | 42.06 | 9.52 | 42.3 | 2.7 |

ご注文例 ORDERING EXAMPLE

① シャンクサイズφD1 Shank Size φD1
 ② 呼称 Name
 ③ インロー径φD2 φD2
 ④ L1 L1

ST32 - SCA - 25.4 - 015