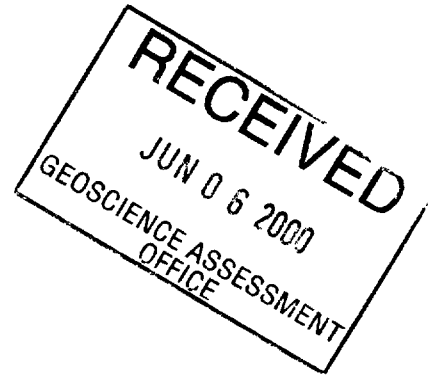


2.23693

DRILLING REPORT  
BERNICE LAKE PROPERTY  
M.GUPPY  
NTS 31 M/4  
Sudbury Mining Division  
Strathy Twp.  
June 2002.



## **Table of Contents**

DDH Location Map

Property Location Map

Claim Map

Drill Section

Drill Log

# DDH GPOI

Cu Showing

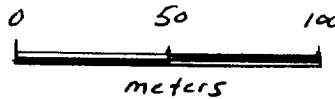
Showing Area

Trans Canada Pipeline

1214928

DDH GP-01  
090 W , 25 N

RECEIVED  
JUN 05 2001  
GEOSCIENCE ASSESSMENT  
OFFICE



Bernice Lake Property  
Martha Guppy

Strathy Township, Ontario  
Sudbury Mining Division

Ground Geophysical Surveys

## DDH LOCATION MAP

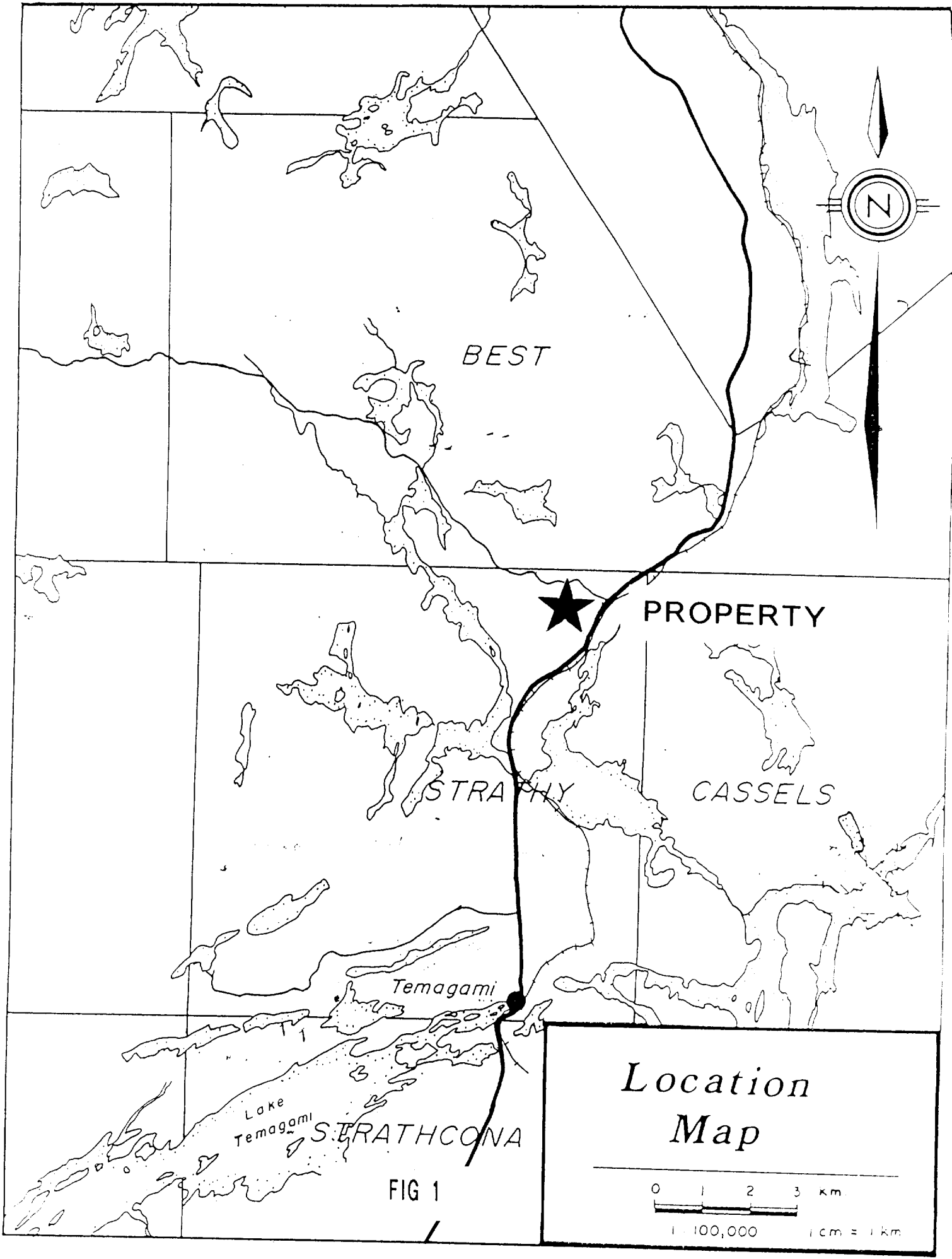
Data Processing and Interpretation by:  
Meegwich Consultants Inc.

Scale 1:2500

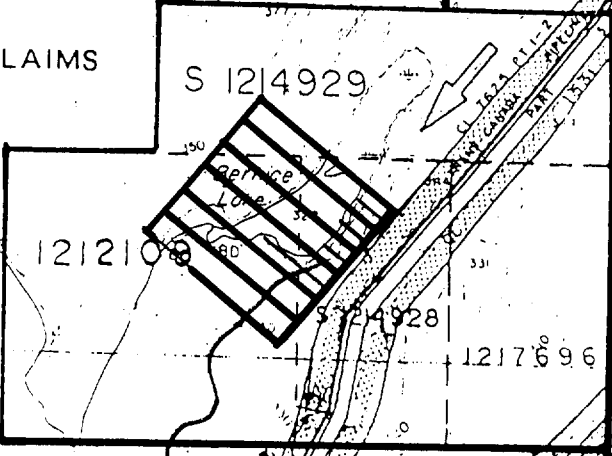
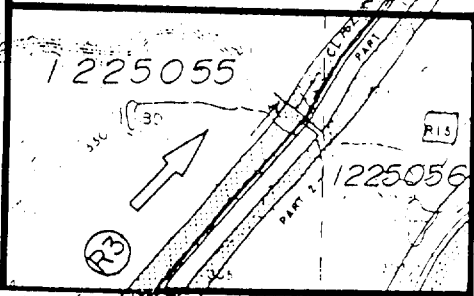
NTS 31 M/4

May 2001

150



1:20,000



GUPPY CLAIMS

S 1214929

1212108

S 124928

1217696

1225055

1225056

S 1202868

TRT 5646

TRT 4089

TRT 5848

1197016

TRT 4071

1200808

TRT 4070

TRT 5626

TRT 5627

TRT 5313

TRT 5660

TEMAGAMI NORTH

1200809

TRT 4071

1202870

TRT 5314

TRT 5628

S 1223394

S 1223388

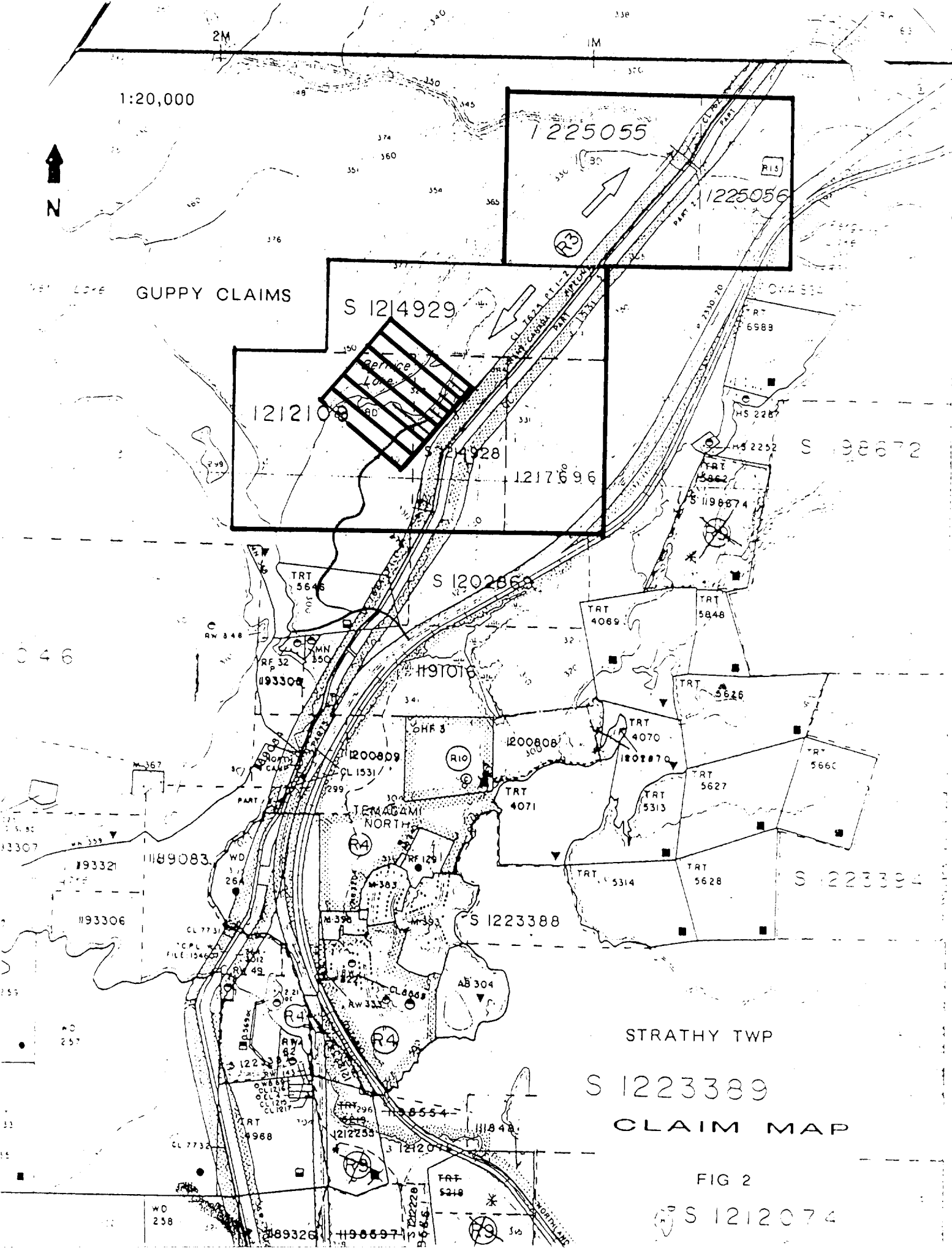
STRATHY TWP

S 1223389

CLAIM MAP

FIG 2

S 1212074



# Martha Guppy

## Diamond Drill Log

Drill Hole Number GP-01

Drilling Company  
Hawk Manufacturing and Mining Services  
Box 932, New Liskeard, ON, P0J 1P0  
705-647-7207

Collar Elevation

Hole Azimuth, true North  
astro 110°

Total Meterage  
60.96

Core Storage Address  
Martha Guppy  
Box 1491, Haileybury ON, P0J 1K0  
705-672-2538

Map Reference  
NTS 11M/4

Date Hole Started  
10/17/01

Date Completed  
10/20/01

Date Logged  
11/20/01

Logged by  
♂ Jim Laidlaw

Dip of Hole at  
m °  
0 -60

Core size  
3Q

Location  
Strathy Tp  
Grid  
L0+90W  
0+25N  
Property Name  
Bernice Lake Property

Exploration Company, Owner or Optionee  
Martha Guppy  
Box 1491, Haileybury ON, P0J 1K0  
705-672-2538

Date Submitted

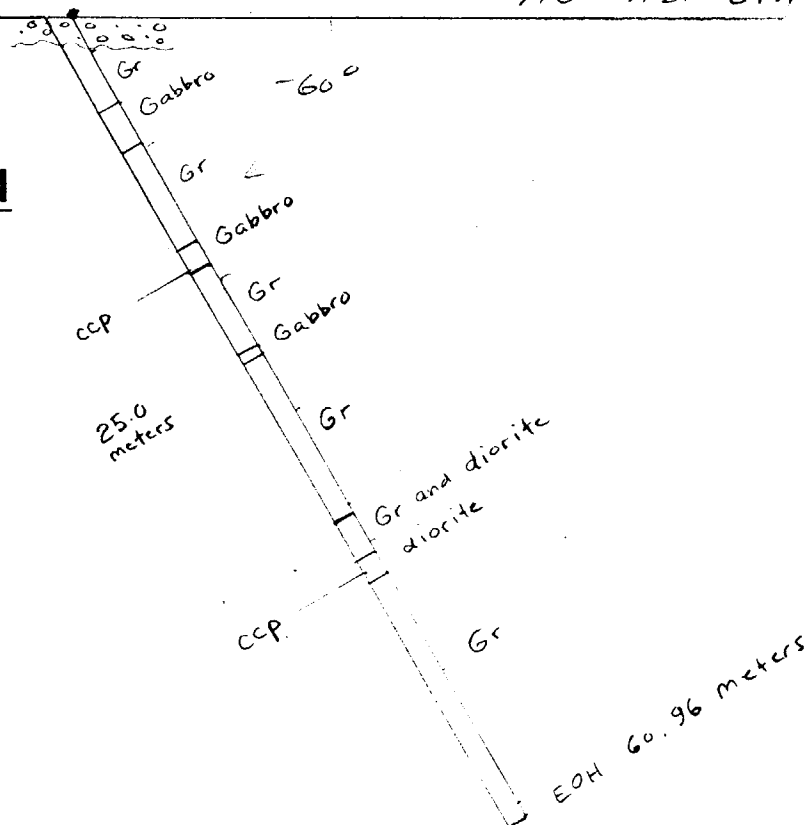
Submitted by

Grid Co-ordinates

090 m West  
025 m North

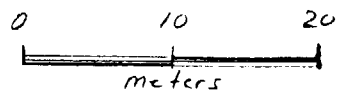
surface 110° Azimuth (astronomic)

### DRILLHOLE SECTION



### LEGEND

- - overburden
- Gr - granite
- ccp - chalcopyrite



1 : 500

# Martha Guppy

## Diamond Drill Log

### Drill Hole Number GP-01

Drilling Company  
Hawk Manufacturing and Mining Services  
Box 932, New Liskeard, ON, P0J 1P0  
705-647-7207

Collar Elevation

Hole Azimuth, true North

Total Meterage

110°

60.96

Core Storage Address

Martha Guppy  
Box 1491, Haileybury ON, P0J 1K0  
705-672-2538

Map Reference

NTS 31M/4

Date Hole Started

10/17/01

Date Completed

10/20/01

Date Logged

11/20/01

Logged by

♂ Jim Laidlaw

Dip of Hole at

m

°  
-60

Core size

BQ

Claim 1214928

Location

Strathy Tp  
Grid:  
L0+90W  
0+25N

Property Name

Bernice Lake Property

Exploration Company, Owner or Optionee

Martha Guppy  
Box 1491, Haileybury ON, P0J 1K0  
705-672-2538

Date Submitted

Submitted by

<u>Meterage</u>	<u>Rock Type</u>	<u>Description (colour, grain size, texture, minerals, Alteration, etc.)</u>	<u>Planar Features</u>	<u>Sample Number</u>	<u>Meterage</u>	<u>Sample Length</u>
From To					From To	m
0.0-2.7	Overburden	Casing				
2.7 - 6.72	Granite	Pink to gray, medium to coarse-grained, holocrystalline, hypidiomorphic: -pink to gray, euhedral to subhedral feldspar; -white to gray milky and vitreous anhedral quartz; -green, chlorite altered euhedral to subhedral hornblende; -numerous chlorite coated fractures ± pyrite and ± chalcopryrite as smears and dissemination along fracture faces, giving granite a brecciated appearance; -contact: -brecciated, medium to coarse-grained granite, chlorite altered with gabbroic clast and fragments, and fine-to-medium-grained disseminated chalcopryrite.	°  30 to 80° 35°			
6.72 - 9.65	Gabbro	Dark gray-green, fine-grained, holocrystalline, hypidiomorphic: -trace fine-grained pyrite; -dike-like, upper contact and; lower contact; -numerous chlorite filled fractures.	25° 75° 45 to 75°			
9.65 - 17.02	Granite	As above 2.72 - 6.72 and; -disseminated trace blebs of pyrite and chalcopryrite associated with chloritic gabbro-like infilled fractures; 16.59 - 16.61 -fine-grained gabbro vein; 16.68 - 16.77 -fine-grained gabbro vein.	50 to 80° 45° 45 - 50°			

Features such as foliation, bedding, schistosity, measured from long axis of the core.

**Martha Guppy**

**Diamond Drill Log**

Drill Hole Number GP-01

<u>Meterage</u> From To	<u>Rock Type</u>	<u>Description (colour, grain size, texture, minerals, Alteration, etc.)</u>	<u>Planar Features</u> °	<u>Sample Number</u>	<u>Meterage</u> From To	<u>Sample Length</u> m
17.02		Contact - planar.	80°			
17.02 - 18.83	Gabbro	Dark gray-green, fine-grained, holocrystalline, hypidiomorphic: -chloritic fractures; -trace disseminated blebs pyrite and chalcopyrite; -1 cm diameter patch chalcopyrite.	80-90°			
18.83 - 25.00	Granite	As above 2.72 - 6.72 and; -trace disseminated blebs of pyrite and chalcopyrite; -numerous chlorite coated narrow veins and fractures.	50 to 75°			
25.0 - 25.52	Gabbro	Dark gray-green, fine-grained, holocrystalline, hypidiomorphic: -weak to moderate spotty carbonate reaction; -quartz-carbonate vein at upper contact; -quartz-carbonate vein;	40° 55°			
25.52 - 37.94	Granite	Contact - planar.	75°			
37.94 - 40.75	Granite-Diorite Mix Zone	As above 2.72 - 6.72 and; -numerous chloritic fractures with pyrite and chalcopyrite on fracture faces, weak carbonate reaction in low angle fractures; -intense chlorite fractures gives granite brecciated appearance.	10 to 85°			
40.75 - 42.52	Diorite	White to pink massive, medium-grained, holocrystalline, hypidiomorphic: -rock grades from granite to diorite; -fine-grained disseminated blebs pyrite and chalcopyrite; -chlorite filled fractures.	45 - 55°			
42.52 - 44.17	Diorite	Mottled gray-white and green, medium-grained, holocrystalline, idiomorphic: -pervasive carbonate on chlorite calcite fractures; -pink calcite crystals throughout section; -trace pyrite and chalcopyrite; -hangingwall; -1 cm wide vein of 5% disseminated pyrite and chalcopyrite; -footwall.	60° 35° 45°			

Features such as foliation, bedding, schistosity, measured from long axis of the core.



# Martha Guppy

## Diamond Drill Log

Drill Hole Number GP-01

<u>Meterage</u> From To	<u>Rock Type</u>	<u>Description (colour, grain size, texture, minerals, Alteration, etc.)</u>	<u>Planar Features</u>	<u>Sample Number</u>	<u>Meterage</u> From To	<u>Sample Length</u> m
42.52 - 60.96	Granite	As above 2.72 - 6.72 and; -spotty carbonate in chloritic fractures	0			
55.3 - 60.96		-coarse-grained, rounded, bluish quartz fragments, rock becomes reddish-pink, numerous fractures;	10 - 35°			
54.1 - 60.96		-pervasive epidote;				
58.83 - 60.96		-intense fracturation and massive brick red coloration of core.				
60.96		E O H				



Date: 2002-JUL-24

GEOSCIENCE ASSESSMENT OFFICE  
933 RAMSEY LAKE ROAD, 6th FLOOR  
SUDBURY, ONTARIO  
P3E 6B5

MARTHA A GUPPY  
1ST ST.  
TEMAGAMI, ONTARIO  
P0H 2H0 CANADA

Tel: (888) 415-9845  
Fax: (877) 670-1555

**Submission Number:** 2.23693  
**Transaction Number(s):** W0270.00968

Dear Sir or Madam

**Subject: Approval of Assessment Work**

We have approved your Assessment Work Submission with the above noted Transaction Number(s). The attached Work Report Summary indicates the results of the approval.

At the discretion of the Ministry, the assessment work performed on the mining lands noted in this work report may be subject to inspection and/or investigation at any time.

If you have any question regarding this correspondence, please contact STEVEN BENETEAU by email at [steve.beneteau@ndm.gov.on.ca](mailto:steve.beneteau@ndm.gov.on.ca) or by phone at (705) 670-5855.

Yours Sincerely,



Ron Gashinski  
Senior Manager, Mining Lands Section

**Cc:** Resident Geologist

David Dennis Laronde  
(Agent)

Martha A Guppy  
(Assessment Office)

Assessment File Library

Martha A Guppy  
(Claim Holder)

