



# ***Drills***

***Call Today to Order • 800-521-8104***



**MP-31DR-ST**  
**1/4" Reversible Palm Drill**

Features an easy to access fwd/rev switch and a two-speed trigger. Durable composite motor housing and planetary gear system with needle bearings make for a versatile, lightweight design well-suited for multiple applications. Replacement Jacobs SM1G61-T1 Multi-Craft® chuck available.

Chuck Capacity	Free Speed	Spindle Thread	Length	Weight	Air Inlet Thread	Rec'd Hose Size	Avg. Air Consumption
1/4"	2600 rpm	3/8"-24	5-13/16"	1.3 lbs	1/4"	3/8"	4 cfm



**MP-31D-ST**  
**1/4" Non-Reversible Palm Drill**

Ideal for aircraft repair and maintenance work. Small and lightweight design to fit in the palm of the hand. Replacement Jacobs SM1G61-T1 Multi-Craft® chuck available.

Chuck Capacity	Free Speed	Spindle Thread	Length	Weight	Air Inlet Thread	Rec'd Hose Size	Avg. Air Consumption
1/4"	2800 rpm	3/8"-24"	5-3/16"	1.3 lbs	1/4"	3/8"	4 cfm



**MP-1403**  
**1/4" Non-Reversible Palm Drill**

Ideal for aircraft repair and maintenance work. Small and lightweight design to fit in the palm of the hand. Replacement Jacobs SM1G61-T1 Multi-Craft® chuck available.

Chuck Capacity	Free Speed	Spindle Thread	Length	Weight	Air Inlet Thread	Rec'd Hose Size	Avg. Air Consumption
1/4"	3000 rpm	3/8"-24	6-1/8"	1.76 lbs	1/4"	3/8"	4 cfm



**MP-SA61100**  
**1/4" Reversible Palm Drill**

Features a comfort grip handle and easy access quick reverse thumb button. Small and lightweight design fits right in the palm of the hand. Ideal for aircraft repair and maintenance work. Replacement Jacobs SM1G61-T1 Multi-Craft® chuck available.

Chuck Capacity	Free Speed	Spindle Thread	Length	Weight	Air Inlet Thread	Rec'd Hose Size	Avg. Air Consumption
1/4"	2000 rpm	3/8"-24	7-5/8"	1.67 lbs	1/4"	3/8"	7 cfm



MP-200D-ST

## 200 Series

### 1/4" Reversible Palm Drills

Ideal for aircraft repair and maintenance work. Small and lightweight with comfort grip and top reverse lever. Replacement Jacobs SM1G61-T1 Multi-Craft® chuck available.

Model	Chuck Capacity	Free Speed	Spindle Thread	Length	Weight	Air Inlet Thread	Rec'd Hose Size	Avg. Air Consumption
MP-200D-ST	1/4"	600 rpm	3/8"-24	8"	1.9 lbs	1/4"	3/8"	4 cfm
MP-201D-ST	1/4"	1100 rpm	3/8"-24	7-3/4"	1.9 lbs	1/4"	3/8"	4 cfm



## MP-2057

### 3/8" Reversible Composite Drill

The most unique, lightweight, reversible, 3/8" capacity drill on the market with features typically only found on much larger drills. Heavy-duty, multiple position dead handle for mixing applications; helps apply firm pressure when drilling tough materials and greater operator control. Includes dead handle. Replacement Jacobs SM4G61-T1 Multi-Craft® chuck available.

Chuck Capacity	Free Speed	Spindle Thread	Length	Weight	Air Inlet Thread	Rec'd Hose Size	Avg. Air Consumption
3/8"	500 rpm	3/8"-24	6-1/8"	2.3 lbs	1/4"	3/8"	7 cfm



MP-ARD38202-DH

## ARD Series

### 3/8" & 1/2" Reversible Drills

Features integrated muffler and easy access quick reverse thumb button. Built with tough alloy steel throughout for long life, consistent power and smooth operation. Feather trigger allows precise control and ergonomic design reduces operator fatigue. Includes dead handle.

Model	Chuck Capacity	Free Speed	Spindle Thread	Length	Weight	Air Inlet Thread	Rec'd Hose Size	Avg. Air Consumption
MP-ARD38202-DH	3/8"	2000 rpm	3/8"-24	8-1/2"	2.91 lbs	1/4"	3/8"	15 cfm
MP-ARD12042-DH	1/2"	400 rpm	3/8"-24	11-3/16"	3.88 lbs	1/4"	3/8"	15 cfm

### Replacement Chucks

41BA-0.375 3/8" Jacobs Med-Duty  
33BA-0.375 1/2" Jacobs Med-Duty



MP-525-ST

## 520 Series

### 3/8" & 1/2" Reversible Drills

Lightweight with a controllable teasing trigger. Features a 1/2 HP motor with a super quiet handle exhaust. Applications include screwdriving, honing and reaming.

Model	Chuck Capacity	Free Speed	Spindle Thread	Length	Weight	Air Inlet Thread	Rec'd Hose Size	Avg. Air Consumption
MP-525-ST	3/8"	2000 rpm	3/8"-24	7-1/4"	2.5 lbs	1/4"	3/8"	4 cfm
MP-527-ST	1/2"	800 rpm	3/8"-24	8-1/4"	3.25 lbs	1/4"	3/8"	4 cfm

### Replacement Chucks

SM4G61-T1 3/8" Jacobs Multicraft®  
SM8K61-T1 1/2" Jacobs Multicraft®





MP-7803-ST

## 7800 Series

### 3/8" & 1/2" Non-Reversible Drills

Lightweight drill designed with a full planetary gearing system for hole sawing and precision drilling. Ideal for production use. Includes dead handle.

Model	Chuck Capacity	Free Speed	Spindle Thread	Length	Weight	Air Inlet Thread	Rec'd Hose Size	Avg. Air Consumption
MP-7802-ST	3/8"	2200 rpm	3/8"-24	7-1/8"	2.5 lbs	1/4"	3/8"	4 cfm
MP-7803-ST	1/2"	500 rpm	3/8"-24	8-7/8"	3.3 lbs	1/4"	3/8"	4 cfm

### Replacement Chucks

SM4G61-T1 3/8" Jacobs Multicraft®  
SM8K61-T1 1/2" Jacobs Multicraft®



MP-5150DP-400B



MP-5150DL-800B

## 5150 Series

### 1/2" Non-Reversible Heavy-Duty Drills

Rugged design aluminum handles. Compact, powerful drill uses precision machined planetary gears to generate high torque for drilling through heavy steel or titanium. Handle exhaust and muffler meet OSHA requirements. Pistol grip and straight models available. Includes dead handle.



-2MT  
2 Morse Taper

### Replacement Chucks

33BA-0.500 1/2" Jacobs Med-Duty  
C013048-1/2THD 2MT Spindle

Model	Grip	Chuck Capacity	Free Speed	Spindle Thread	Length	Weight	Air Inlet Thread	Rec'd Hose Size	Avg. Air Consumption
MP-5150DP-055B	Pistol	1/2"	55 rpm	1/2"-20	10-3/8"	6.2 lbs	3/8"	3/8"	6 cfm
MP-5150DL-055B	Straight	1/2"	55 rpm	1/2"-20	10"	5.25 lbs	3/8"	3/8"	6 cfm
MP-5150DP-160B	Pistol	1/2"	160 rpm	1/2"-20	10-3/8"	6.2 lbs	3/8"	3/8"	6 cfm
MP-5150DL-160B	Straight	1/2"	160 rpm	1/2"-20	10"	5.25 lbs	3/8"	3/8"	6 cfm
MP-5150DP-160B-2MT	Pistol	2MT	160 rpm	1/2"-20	12-5/8"	6.0 lbs	3/8"	3/8"	6 cfm
MP-5150DL-160B-2MT	Straight	2MT	160 rpm	1/2"-20	12-1/4"	5.05 lbs	3/8"	3/8"	6 cfm
MP-5150DP-400B	Pistol	1/2"	400 rpm	1/2"-20	9-1/8"	5.3 lbs	3/8"	3/8"	6 cfm
MP-5150DL-400B	Straight	1/2"	400 rpm	1/2"-20	11-1/8"	4.35 lbs	3/8"	3/8"	6 cfm
MP-5150DP-400B-2MT	Pistol	2MT	400 rpm	1/2"-20	11-3/8"	5.1 lbs	3/8"	3/8"	6 cfm
MP-5150DL-400B-2MT	Straight	2MT	400 rpm	1/2"-20	12-1/4"	4.15 lbs	3/8"	3/8"	6 cfm
MP-5150DP-800B	Pistol	1/2"	800 rpm	1/2"-20	9-1/8"	5.3 lbs	3/8"	3/8"	6 cfm
MP-5150DL-800B	Straight	1/2"	800 rpm	1/2"-20	11-1/8"	4.35 lbs	3/8"	3/8"	6 cfm
MP-5150DP-800B-2MT	Pistol	2MT	800 rpm	1/2"-20	11-3/8"	5.1 lbs	3/8"	3/8"	6 cfm
MP-5150DL-800B-2MT	Straight	2MT	800 rpm	1/2"-20	12-1/4"	4.15 lbs	3/8"	3/8"	6 cfm



3-3/4"

### MP-500AH-ST

#### 3/8" Non-Reversible Angle Drill

Right angle drill designed to access confined or hard-to-reach areas. Durable and lightweight. Replacement Jacobs SM4G61-T1 Multi-Craft® chuck available.

Chuck Capacity	Free Speed	Spindle Thread	Length	Weight	Air Inlet Thread	Rec'd Hose Size	Avg. Air Consumption
3/8"	1900 rpm	3/8"-24	7-5/8"	2 lbs	1/4"	3/8"	4 cfm



3-3/4"

MP-2379R-ST

### 2379 Series

#### Reversible Angle Drills

Right angle drill with comfort grip housing designed to access confined or hard-to-reach areas. Lightweight, compact and reversible with variable speed control for a variety of drilling applications.

Model	Chuck Capacity	Free Speed	Spindle Thread	Length	Weight	Air Inlet Thread	Rec'd Hose Size	Avg. Air Consumption
MP-2379R-ST	3/8"	1400 rpm	3/8"-24	8-3/8"	2.6 lbs	1/4"	3/8"	4 cfm
MP-2379R-1/2-ST	1/2"	1400 rpm	3/8"-24	8-3/8"	2.6 lbs	1/4"	3/8"	4 cfm

#### Replacement Chucks

SM4G61-T1 3/8" Jacobs Multicraft®  
SM8K61-T1 1/2" Jacobs Multicraft®



MP-2100-ST

### 2100 Series

#### 3/8" Non-Reversible Straight Drills

Designed with a 3-way planetary gear reduction system for intense drilling operations in metal or wood. Housed in a lightweight, rugged aluminum handle. Replacement Jacobs SM4G61-T1 Multi-Craft® chuck available.

Model	Chuck Capacity	Free Speed	Spindle Thread	Length	Weight	Air Inlet Thread	Rec'd Hose Size	Avg. Air Consumption
MP-2100-ST	3/8"	2600 rpm	3/8"-24	8-3/4"	2 lbs	1/4"	3/8"	4 cfm
MP-2145-ST	3/8"	4500 rpm	3/8"-24	8-1/8"	2 lbs	1/4"	3/8"	4 cfm



MP-5835DR

### 830 Series

#### 3/8" & 1/2" Reversible Drills

High torque output for demanding applications. Features comfort grip handle and easy access fwd/rev switch. Includes a 360° position dead handle for greater operator control.

Model	Chuck Capacity	Free Speed	Spindle Thread	Length	Weight	Air Inlet Thread	Rec'd Hose Size	Avg. Air Consumption
MP-3830DR	3/8"	2000 rpm	3/8"-24	8-1/2"	2.3 lbs	1/4"	3/8"	4 cfm
MP-5835DR	1/2"	350 rpm	1/2"-20	9-15/16"	3.1 lbs	1/4"	3/8"	4 cfm

#### Replacement Chucks

41BA-0.375 3/8" Jacobs Med-Duty  
33BA-0.375 1/2" Jacobs Med-Duty



**MP-1231FB-GP**

**3/8" Reversible Composite Drill**

Made from a high impact resistant composite for jobsite durability. Features comfort grip and suspension bail for reducing operator fatigue. Replacement Jacobs 31690 keyless chuck available.

Chuck Capacity	Free Speed	Spindle Thread	Length	Weight	Air Inlet Thread	Rec'd Hose Size	Avg. Air Consumption
3/8"	1550 rpm	3/8"-24	7-3/4"	3.1 lbs	1/4"	3/8"	5.3 cfm



**MP-1232FB-GP**

**1/2" Reversible Composite Drill**

Made from a high impact resistant composite for jobsite durability. Features comfort grip and suspension bail for reducing operator fatigue. Replacement Jacobs 33BA-0.375 chuck available.

Chuck Capacity	Free Speed	Spindle Thread	Length	Weight	Air Inlet Thread	Rec'd Hose Size	Avg. Air Consumption
1/2"	430 rpm	3/8"-24	9-1/2"	4.0 lbs	1/4"	3/8"	5.3 cfm



**MP-1230FB-GP**

**1/2" Reversible Composite Drill**

Made from a high impact resistant composite for jobsite durability. Features comfort grip and suspension bail for reducing operator fatigue. Replacement Jacobs 33BA-0.375 chuck available.

Chuck Capacity	Free Speed	Spindle Thread	Length	Weight	Air Inlet Thread	Rec'd Hose Size	Avg. Air Consumption
1/2"	460 rpm	3/8"-24	11-3/4"	3.75 lbs	1/4"	3/8"	5.3 cfm



**MP-9400FB-GP**

**1/2" Reversible Composite Drill**

Made from a high impact resistant composite for jobsite durability. Features comfort grip and suspension bail for reducing operator fatigue. Replacement Jacobs 33BA-0.500 chuck available.

Chuck Capacity	Free Speed	Spindle Thread	Length	Weight	Air Inlet Thread	Rec'd Hose Size	Avg. Air Consumption
1/2"	400 rpm	1/2"-20	9-1/2"	6.8 lbs	1/4"	3/8"	9.9 cfm



MP-5375-ST

### 375 Series

#### 1/2", 5/8" & 2MT Non-Reversible Industrial D-Handle Drills

Rugged design with inside trigger D-Handle for safety and durability. Dead handle mounts to either side for right or left-handed operation. High torque ideal for mixing or heavy drilling applications. Replacement 10033-17 chuck available.

Model	Chuck Capacity	Free Speed	Spindle Thread	Length	Weight	Air Inlet Thread	Rec'd Hose Size	Avg. Air Consumption
MP-5375-ST	1/2"	1200 rpm	1/2"-20	14"	7.1 lbs	3/8"	1/2"	5 cfm
MP-8375-ST	5/8"	800 rpm	1/2"-20	14-1/2"	8.0 lbs	3/8"	1/2"	5 cfm
MP-8375-ST-2MT	2MT	800 rpm	1/2"-20	16-1/2"	7.4 lbs	3/8"	1/2"	5 cfm



MP-8375-ST-2MT  
Industrial Drill

### MP-719T2

#### Floor Drill

Floor drill is ideal for self-drilling and self-tapping screws in the truck and trailer industries. Features a lower rpm for higher driving and stall torque. Equipped with Jacobs 33BA-1/2 medium-duty chuck.

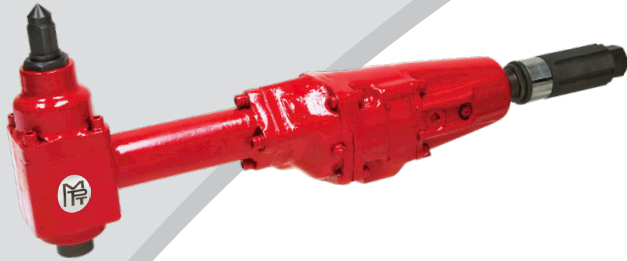


MP-719T2  
Drill Motor Detail



Chuck Capacity	Free Speed	Spindle Thread	Width of Motor	Width w/ Handle	Length	Weight	Air Inlet Thread	Rec'd Hose Size	Avg. Air Consumption
1/2"	1500 rpm	1/2"-20	2-3/4"	17-3/4"	32-1/2"	11 lbs	3/8"	3/8"	26 cfm





### MP-323-3

#### 3MT Non-Reversible Corner Drill

Designed for heavy-duty use in confined areas. Features extra heavy-duty grease packed gearing, hardened ground motor liner, teasing throttle, feed screw, and a governor controlled motor to maintain drilling speed during intense operation.



**C035461**  
Self Closing  
Roll Throttle Assy



**C018072**  
Ratchet Wrench

Drilling Capacity	Free Speed	Morse Taper	Maximum HP	Height of Spindle	Length	Weight	Spindle Offset	Avg. Air Consumption
1"	175 rpm	#3	1.5	8-1/2"	26-1/8"	21.5 lbs	1-7/16"	26 cfm

### MP-20 Series

#### Non-Reversible Corner Drill

Used in the close quarters drilling applications. We use a governed, 2HP air motor with bronze end plates and herringbone gears to deliver power to the robust steel angle head. With the lowest angle head height in this class, it is the ideal tool for reaming or drilling using low profile drill bits, countersinks, reamers and box car bits. Also features a two-step safety lever mechanism.



**MP-20M-401L**



**9383B**  
Ratchet Wrench



**MP-20M-401L-3MT**  
shown with 8" Extension



#### Optional Feed Mechanism Extensions Wide range of angles and positions

- RD30-EXT-7** 7" Extension
- RD30-EXT-8** 8" Extension
- RD30-TH401** Extension Adapter

Model	Drilling Capacity	Free Speed	Morse Taper	Maximum HP	Height of Spindle	Length	Weight	Spindle Offset	Avg. Air Consumption
MP-20M-401L	1"	240 rpm	#2	2	5-1/4"	24-3/4"	21.5 lbs	1-7/16"	26 cfm
MP-20M-401L-3MT	1"	240 rpm	#3	2	5-1/4"	24-3/4"	21.5 lbs	1-7/16"	26 cfm



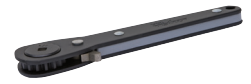


### MP-L-257

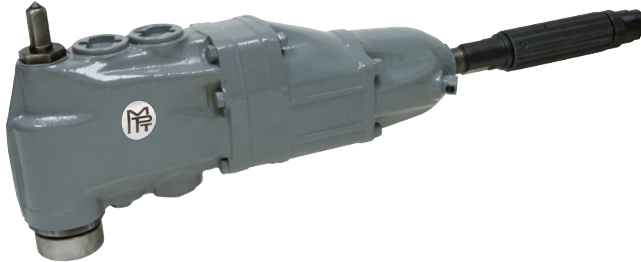
#### 2MT Non-Reversible Corner Drill

Compact, rugged, powerful design for heavy-duty use in confined areas. Features positive starting control and sensitive speed variation. Will handle various drilling, reaming and tapping applications. Ideal for assembly plants, refineries and railroad shops.

Drilling Capacity	Free Speed	Morse Taper	Maximum HP	Height of Spindle	Length	Weight	Spindle Offset	Avg. Air Consumption
29/32"	320 rpm	#2	1.4	5-7/8"	19-1/2"	19 lbs	1-1/4"	29 cfm



22-82232-5600  
Ratchet Wrench



### MP-30

#### 3MT Non-Reversible Corner Drill

Strong, powerful close quarters drill built to withstand heavy-duty drilling, reaming and tapping where space is limited. Particularly useful in machine shops, power plants and railroad shops.

Drilling Capacity	Free Speed	Morse Taper	Maximum HP	Height of Spindle	Length	Weight	Spindle Offset	Avg. Air Consumption
1-1/4"	185 rpm	#3	2.8	8-3/4"	25-1/4"	33 lbs	1-3/8"	80 cfm



R30-48  
Ratchet Wrench

### Don't Forget Your Essential Air Tool Gear!

- High-Wear & Consumable Parts
- Air Tool Oil & In-Line Lubricators
- Air Hoses & Whip Hose Assemblies
- Portable FRL's & Moisture Separators
- Safety Lock Cables & Clips



Air Movers  
(Page 17-5)



Portable FRL's  
(Page 17-4)



Portable Moisture Separator  
(Page 17-3)

Accessories  
Pages 18-5 - 18-14

### Whip Hoses

#### 1/2" Lubricator Whip Hose Assemblies

Model	Assembly Components			Air Flow @ 70 PSI
	Fitting to Tool	Hose	Lubricator	
MP-3HW-HDS	1/2" MPT	1/2" ID x 6 ft	0-R w/CP Fitting	30 cfm

#### 1/2" Black Hydraulic Whip Hose Assemblies (300 psi)

Model	Assembly Components		
	Integral Swivel Fitting	Hose	Lubricator
3HW-HYD-OLF	1/2" MPT	1/2" ID x 6 ft	0L-F CP Fitting

### Industrial Grade Air Hoses - with Fittings

- Maximum pressures 200/250/300 psi
- Heavy-duty double strand
- High tensile rayon cord
- Tough neoprene
- Oil resistant

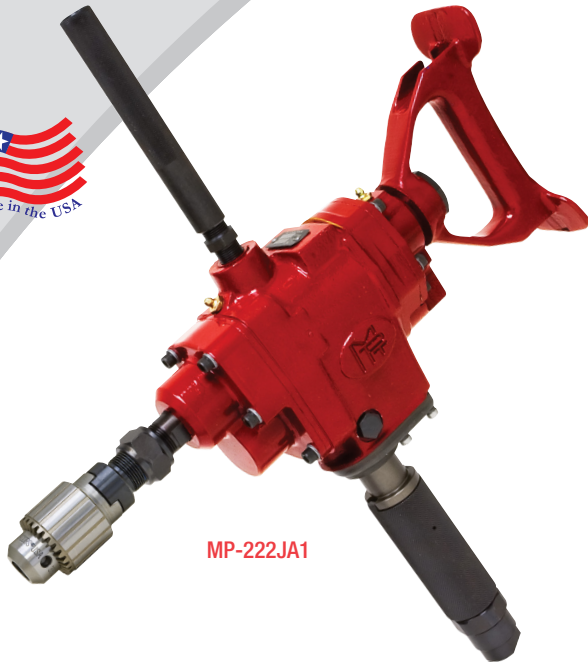


Model	Hose ID	Hose OD	Length	Max. PSI	Fittings
AH-5	3/4"	1-5/32"	50 ft	300 psi	CP Fittings

Other sizes also available. All air hoses are industrial grade construction.

## Extra Heavy-Duty Drill/Wood Borer

Ideal for wood boring in marine timbers and railroad repair work. Features include ball bearing support for long life and efficient operation, a graduated roll throttle for speed control, and durable spur gearing. Includes breast plate, dead handle and an integrated lubricator standard. Equipped with 1/2" Air Inlet Thread requiring Average Air Consumption of 50 cfm. Recommended hose size of 1/2".



MP-222JA1

### Step 1. Select Motor No.

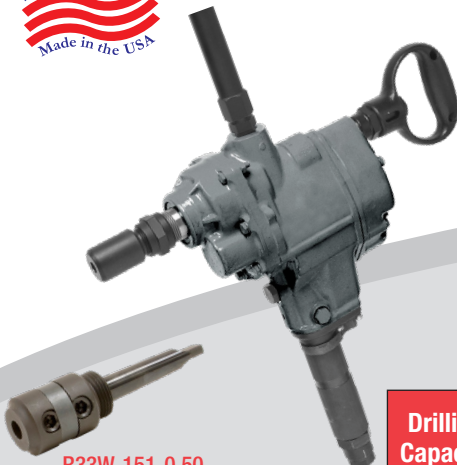
Motor	Free Speed	Capacity	
		Drilling	Reaming/Tapping
MP-222J	1025 rpm	9/16"	3/8"
MP-222K	750 rpm	9/16"	7/16"
MP-222M	350 rpm	7/8"	5/8"

### Step 2. Select Spindle Option



### Example for Ordering

MOTOR NO.	SPINDLE FEED OPTION	MODEL NO. FOR ORDERING
<b>MP-222K</b> Step 1	+ <b>WA1</b> Step 2	= <b>MP-222KWA1</b>



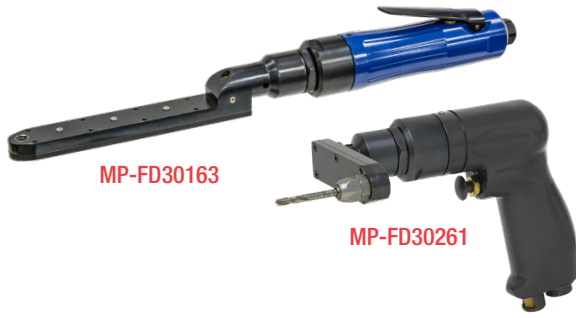
R33W-151-0.50  
Wood Boring Chuck

## MP-33W

### 2" Capacity Wood Borer - Reversible

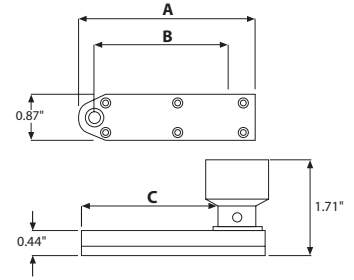
Designed for heavy-duty woodworking. Preferred for wood boring as the operator can easily control the power and speed by the throttle. Powerful, lightweight and easy to handle. Ideal for all types of wood boring, construction work, railroads, shipyards and wharf and pier construction. Includes R33W-151-0.50 Wood Boring Chuck.

Drilling Capacity	Free Speed	Morse Taper	Maximum HP	Length	Weight	Air Inlet Thread	Spindle Offset	Avg. Air Consumption
2"	800 rpm	#2	3	17-5/8"	28.75 lbs	1/2"	1-7/8"	85 cfm



### Flat Offset Angle Drills

Smooth, quiet design features a steel alloy cylinder and rotor. Feather trigger for better control. Head may be adjusted to desired angle. Bit not included.



Model	Capacity	Free Speed	Spindle Thread	Length	Weight	Air Inlet Thread	Rec'd Hose Size	Avg. Air Consumption	A	B	C
MP-FD30161	1/4"	3000 rpm	1/4"-28	11-1/4"	2 lbs	1/4"	1/4"	4 cfm	3.35"	2.49"	2.65"
MP-FD30261	1/4"	3000 rpm	1/4"-28	7"	2 lbs	1/4"	1/4"	4 cfm	3.35"	2.49"	2.65"
MP-FD30162	1/4"	3000 rpm	1/4"-28	14"	2.25 lbs	1/4"	1/4"	4 cfm	6.16"	3.83"	3.79"
MP-FD30262	1/4"	3000 rpm	1/4"-28	7"	2.25 lbs	1/4"	1/4"	4 cfm	6.16"	3.83"	3.79"
MP-FD30163	1/4"	3000 rpm	1/4"-28	15-1/2"	2.50 lbs	1/4"	1/4"	4 cfm	7.50"	5.18"	5.13"
MP-FD30263	1/4"	3000 rpm	1/4"-28	7"	2.50 lbs	1/4"	1/4"	4 cfm	7.50"	5.18"	5.13"



### Non-Reversible Angle Drills

Lightweight, powerful drill ideal for aircraft and sheet metal repair. Features a milled rear exhaust motor housing, and steel alloy cylinder and rotor for long tool life. Precision machined for smooth and quiet operation. Bits not included.



Model	Capacity	Free Speed	Spindle Thread	Length	Weight	Air Inlet Thread	Rec'd Hose Size	Avg. Air Consumption
MP-9030	1/4"	3000 rpm	1/4"-28	10-11/16"	2.0 lbs	1/4"	1/4"	7 cfm
MP-9030EXT	1/4"	3000 rpm	1/4"-28	13-3/8"	2.0 lbs	1/4"	1/4"	7 cfm
MP-9030EXT-45	1/4"	3000 rpm	1/4"-28	14-7/8"	2.0 lbs	1/4"	1/4"	7 cfm
MP-9030-9/32-40	1/4"	3000 rpm	9/32"-40	10-11/16"	2.0 lbs	1/4"	1/4"	7 cfm
MP-9030EXT-45-9/32-40	1/4"	3000 rpm	9/32"-40	14-7/8"	2.0 lbs	1/4"	1/4"	7 cfm
MP-3603	1/4"	3000 rpm	1/4"-28	10-5/8"	2.0 lbs	1/4"	1/4"	7 cfm
MP-3045	1/4"	3000 rpm	1/4"-28	10-29/32"	1.9 lbs	1/4"	1/4"	7 cfm
MP-3045-9/32-40	1/4"	3000 rpm	9/32"-40	10-29/32"	1.9 lbs	1/4"	1/4"	7 cfm
MP-3605KU	1/4"	2100 rpm	1/4"-28	11-7/8"	2.4 lbs	1/4"	1/4"	7 cfm

Call Today to Order • 800-521-8104

## Jacobs® Multi-Craft® Light-Duty Chucks



Jacobs® Model	MPT Model	Capacity (min-max)	Threaded Mount	Uses Key
SM1G61-T1	SM1G61-T1	0.028 - 0.250"	3/8"-24	KG1
DC4G61-T1 DC4G61-T2 SM4G61-T1 SM4G61-T2	DC4G61-T1 DC4G61-T2 SM4G61-T1 SM4G61-T2	0.063 - 0.375"	3/8"-24	KG1
032116C 032053C	SM8K61-T1 SM8K64-T1	0.078 - 0.500"	3/8"-24 1/2"-20	KK

### Thread Mounted Light-Duty Industrial Model

24BA-3/8 26BA-1/2	24BA-0.375 26BA-0.500	0.063 - 0.500"	3/8"-24 1/2"-20	KK
----------------------	--------------------------	----------------	--------------------	----

## Jacobs® HAND-TITE® Keyless Chuck



Jacobs® Model	MPT Model	Capacity (min-max)	Threaded Mount	Sleeve Type
31690 31708-3/8	31690 31708-ASM	0.032 - 0.375"	3/8"-24	2 pc
31708 32000	31708 32000	0.032 - 0.375"	2JT 1/2"-20	2 pc 1 pc
31731-3/8 31791	31731-ASM 31791	0.062 - 0.500"	3/8"-24	1 pc 2 pc
31731	31731	0.062 - 0.500"	1/2"-20	1 pc

## Jacobs® Plain Bearing Drill Chucks

### Thread Mounted Medium-Duty Model

Jacobs® Model	MPT Model	Capacity (min-max)	Threaded Mount	Uses Key
0B-5/16	0B-0.312	0.0135 - 0.156"	5/16"-24	K0
1BA-3/8	1BA-0.375	0.040 - 0.250"	3/8"-24	K1
2BA-3/8	2BA-0.375	0.040 - 0.375"	3/8"-24	K2
41BA-3/8 41BA-1/2	41BA-0.375 41BA-0.500	0.040 - 0.375"	3/8"-24 1/2"-20	K30
33BA-3/8 33BA-1/2 33BA-5/8	33BA-0.375 33BA-0.500 33BA-0.625	0.078 - 0.500"	3/8"-24 1/2"-20 5/8"-16	K32

### Thread Mounted Medium-Duty Model

Jacobs® Model	MPT Model	Capacity (min-max)	Taper Mount	Uses Key
0 1A	0 1A	0.0135 - 0.156" 0.040 - 0.250"	0JT 1JT	K0 K1
2A 2-01	2A 2-01	0.040 - 0.375"	2JT 1JT	K2
33 33KD **	33 33KD	0.078 - 0.500"	33JT	K32

### Thread Mounted Heavy-Duty Model

7BA-3/8 32BA-1/2	7BA-0.375 32BA-0.500	0.040 - 0.250" 0.040 - 0.375"	3/8"-24 1/2"-20	K7 K32
34B-5/8 34B-45/64	34B-0.625 34B-0.703	0 - 0.500"	5/8"-16 45/64"-16	K3
3B-1/2 3B-5/8 3B-45/64	3B-0.500 3B-0.625 3B-0.703	0.125 - 0.625"	1/2"-20 5/8"-16 45/64"-16	K3
36B-5/8 36B-3/4 36B-45/64	36B-0.625 36B-0.750 36B-0.703	0.188 - 0.800"	5/8"-16 3/4"-16 45/64"-16	K4

### Thread Mounted Heavy-Duty Model

34-02 34-06 34-33 34-33C *	34-02 34-06 34-33 34-33C	0.040 - 0.500"	2JT 6JT 33JT 33JT	K3 K3 K3 K3C
3A 3KD ** 3PD ***	3A 3KD 3PD	0.125 - 0.625"	3JT	K3
36 36KD ** 36PD ***	36 36KD 36PD	0.180 - 0.800"	3JT	K4

\* Equipped with locking collar 1-1/16"-20 thread.

\*\* Equipped with positive drive slot.

\*\*\* Equipped with pin-type positive drive.

## Jacobs® Ball Bearing Super-Duty Chucks

Super ball bearing chucks are the world's most accurate chucks designed for extra heavy-duty drilling. Ideal for close tolerance production drilling on precision equipment.



Jacobs® Model	MPT Model	Capacity (min-max)	Threaded Mount	Uses Key
8-1/2N	8-0.500N	0.040 - 0.250"	2SJT	K30
11N	11N	0.040 - 0.375"	2JT	K32
14N	14N	0.040 - 0.500"	3JT	K3
16N	16N	0.125 - 0.625"	3JT	K4
18N	18N	0.125 - 0.750"	4JT	K4
20N	20N	0.375 - 1.000"	5JT	K5



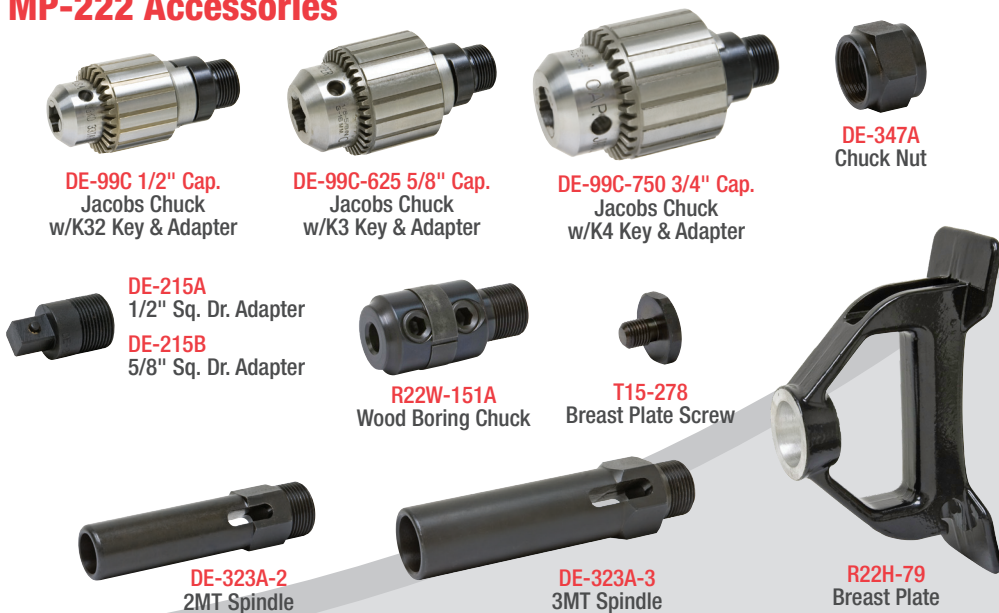


## Morse Taper Arbors



Model	Morse Taper	Drive
A0261	2MT	3/8"-24 Threaded
A0264	2MT	1/2"-20 Threaded
A0268	2MT	5/8"-16 Threaded
R33W-151-0.50	2MT	Woodboring Chuck
R33SW-151A-0.50	3MT	Woodboring Chuck
2MTX12SQ	2MT	1/2" Square
3MTX12SQ	3MT	1/2" Square
3MTX34SQ	3MT	3/4" Square
33SH-214	3MT	3/4" Square
3MTX1SQ	3MT	1" Square
4MTX1SQ	4MT	1" Square
5MTX1SQ	5MT	1" Square

## MP-222 Accessories



## Other Manufacturer Accessories



## Jacobs® Arbors

Morse taper to Jacobs® taper arbors can be used to adapt any Morse taper drill to accept Jacobs® chucks. These adapters improve drill operation and make drill bit changes quicker.



Jacobs® Taper	#1 Morse Taper Model	#2 Morse Taper Model	#3 Morse Taper Model	#4 Morse Taper Model	#5 Morse Taper Model
1JT	A0101	A0201	A0301	—	—
2JT	A0102	A0202	A0302	A0402	—
3JT	—	A0203	A0303	A0403	A0503
4JT	—	A0204	A0304	A0404	A0504
5JT	—	—	A0305	A0405	A0505
6JT	A0106	A0206	A0306	A0406	—
33JT	A0133	A0233	A0333	A0433	—

Call Today to Order • 800-521-8104

9-13

## High Speed Drill Bits - 135° Threaded Shank

Produced from industrial-grade steel. Split point penetrates on contact and prevents "walking" of bit. Designed for steel (low and medium carbon), steel alloy and stainless steel. Long and stubby lengths also available.

- HSS designed for cast iron and steel alloy.
- Cobalt designed for steel (low and medium carbon), steel alloy and stainless steel alloys.



High Speed Steel Part No.	Cobalt Steel Part No.	Size	Decimal Equivalent	Overall Length
325-40	625-40	#40	0.0980	1"
325-0.125	625-0.125	1/8"	0.1250	1-1/4"
325-30	625-30	#30	0.1285	
325-27	625-27	#27	0.1440	
325-0.1562	625-0.1562	5/32"	0.1562	
325-21	625-21	#21	0.1590	1-1/4"
325-20	625-20	#20	0.1610	
325-16	625-16	#16	0.1770	
325-13	625-13	#13	0.1850	
325-0.1875	625-0.1875	3/16"	0.1875	1-1/4"
325-11	625-11	#11	0.1910	
325-10	625-10	#10	0.1935	
325-0.25	625-0.25	1/4"	0.2500	
325-F	625-F	"F"	0.2570	

## 100° Countersink Cutters

Fits any micro-stop countersink or angle drill with a 1/4"-28 spindle. Cutter and integral pilot are precision ground.



Pilot Size	Body Diameter		
	7/16"	3/8"	1/2"
#40	328-40	328-38-40	328-12-40
#30	328-30	328-38-30	
#27	328-27	—	—
#21	328-21	328-38-21	328-12-21
#10	328-10	328-38-10	328-12-10
1/4"	328-0.25	—	—

## Drill Stops

Helps eliminate the worry of drilling too deep into tubing, wiring, etc.



DS47-1



DS47-2

Part No.	Drill Size	Hole Diameter
DS47-0	#50	0.073"
DS47-1	#40	0.099"
DS47-2	#30	0.130"
DS47-22	#27	0.146"
DS47-3	#21	0.161"
DS47-4	#20	0.163"
DS47-42	#16	0.179"
DS47-5	#12	0.181"
DS47-6	#10	0.196"
DS47-7	1/4"	0.257"
DS47-8	5/16"	0.315"

## Micro-Stop Countersinks



### MPT727 - Mini

Designed to be operated in angle drills with a 1/4"-28 spindle. Features a 3/32" shaft travel and a 9/16" cutter capacity. Rated for up to 3,000 rpm and is adjustable in 0.001 increments.



### MPT827 - Standard

Features 1/4" shank with 9/32" travel. Will accept up to 1/2" diameter cutters with a 1/4"-28 thread. Rated for up to 3,000 rpm and is adjustable in 0.001 increments.



### MPT927 - Ball Bearing

The ball bearing style micro-stop countersink featuring same specifications as Model MPT827. Rated for up to 10,000 rpm.