

DRY-BREAK COUPLINGS



STORAGE

ROAD

AVIATION

TODO

A Gardner Denver Product

EMCO WHEATON

A Gardner Denver Product

RAIL

MARINE



WHAT ARE DRY-BREAKS?

DRY-BREAK Couplings provide a simple, quick, safe and environmentally friendly method for the handling of dangerous liquids and gasses. They minimise risk of operator exposure to emissions, provide better ergonomics, reduce human error and achieve commercial benefits through time saving and clean-up costs.

WHY USE THEM?

- Quick coupling/de-coupling without significant loss of media
- Suitable coupling technologies for different applications
- Safety of human health and the environment
- Extremely reliable, very few moving parts
- Reduce the possibility of human error in transfer operations
- Couplers reduce spillage to virtually zero
- Ease of handling
- Prevent cross-contamination between products?



WHERE CAN THEY BE USED?

Offshore

- Ship to rig transfer
- Ship to shore transfer
- On rig handling
- Container discharge
- Fuel bunkering
- Barge to ferry bunkering

Aviation

- Aircraft fuelling
- Helicopter fuelling
- De-icing
- Loading and unloading of tank trucks, refuellers and dispensers

Offroad

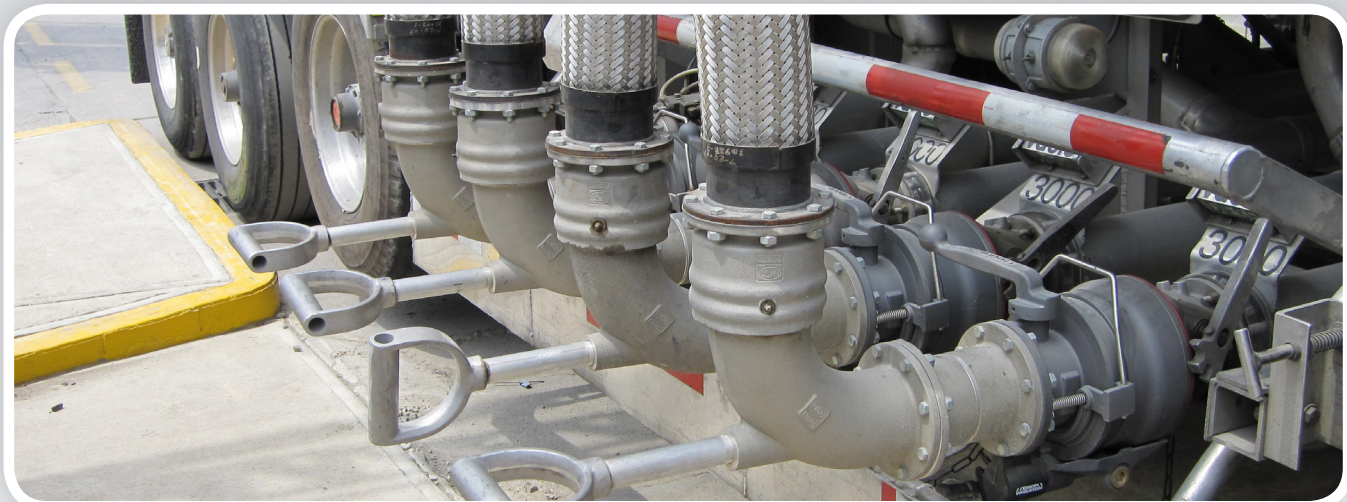
- Fuel storage
- Vehicle loading and unloading

Rail

- Rail car loading and unloading
- Locomotive fuelling applications

Road

- Fleet refuelling
- Tank truck loading and unloading



WHAT ARE DRY-BREAKS?

DRY-BREAK Systems are used in any application where the accidental spillage of liquids must be avoided. Emco Wheaton invented the term “DRY-BREAK” in the 1950s and it has become recognized in the industry as the leading brand of couplings that allow for spill-free disconnect of the two components. The two components are referred to as the “coupler” or “hose unit” and the “adapter” or “tank unit”. The combination of Emco Wheaton and TODO DRY-BREAK couplings gives the end user the world’s greatest range of styles, materials, and working conditions.

WHAT PRODUCTS CAN THEY HELP TRANSPORT?

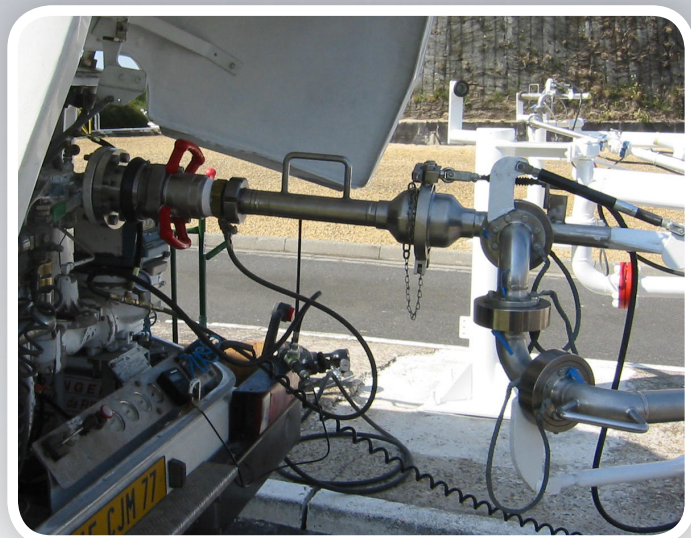
Gas

Gas Couplings protect people and property from dangerous and costly exposure by keeping hazardous liquids and vapours in-line and out of the environment.

Gas Couplings are used at liquid or vapour transfer points where you do not want product loss. Using Gas couplings will reduce the hazards typically found when handling/processing LPG.

Chemicals

With safety, environmental and health protection of paramount importance in the chemical industry, couplings offer maximum safety when loading and unloading aggressive liquids and gases. Chemical and thermal stability, resistance to high pressure or vacuum as well as electrostatic dissipation capability are just some of the high demands made on equipment used in the chemical industry.



Oil

The world's major oil companies rely on couplings to safely transfer volatile crude oil from refineries to terminals, from marine and pipeline terminals to distribution terminals as well as through transportation methods such as rail, barges or ships.



WHAT DRY BREAK SOLUTIONS ARE AVAILABLE?

DRY-BREAK Couplers & Adapters - Emco Wheaton

Emco Wheaton Couplers and Adapters are designed for total safety in low-pressure, petroleum and light chemical applications. Fluid cannot flow until the Emco Wheaton coupler has been locked into position on an Emco Wheaton Adapter and the valve opened. The coupler can only be disconnected from the adapter when the valve has been closed. Rated for a working pressure of 85 psi (PN 6).



DRY-BREAK TODO-GAS

TODO-GAS couplings are specifically designed for the safe transfer of LPG (typically Propane /Butane) in both liquid and vapour phases. The materials of construction and component design are specified to recognise the unique properties of LPG and terminal handling characteristics. Working pressure of PN 25 (363 psi).

DRY-BREAK TODO-MATIC

The first choice for the safe handling of hazardous, valuable or environmentally sensitive media. Complementing the Emco Wheaton range, these products are available specifically for high pressure applications. Working Pressure of PN 10-25 (145 - 363 psi) Todo are pleased to offer proven solutions for DEF/AdBlue deliveries to small containers, IBC totes and bulk storage tanks giving minimal residual spillage upon disconnection.

Aviation Couplings - TODO 45

Used in commercial, offshore and military applications, the TODO 45 aviation fuel transfer couplings are built to take the strains of rapid fuelling activities in the most demanding of applications.

MANUFACTURING FACILITIES / SALES OFFICE

Emco Wheaton

Channel Road,
Westwood Industrial Estate,
Margate,
Kent,
CT9 4JR UK
Phone +44 (0)1843 221521
Fax +44 (0)1843 295444

Emco Wheaton Corp.

2390 South Service Road West,
Oakville,
Ontario,
L6L 5M9
CANADA
Phone: 905-829-8619
Fax: 905-829-8620

Emco Wheaton GmbH

Emcostraße 2-4,
35274,
Kirchhain,
Germany
Phone +49 6422 84-0
Fax +49 6422 5100

Emco Wheaton USA, Inc.

9111 Jackrabbit Road,
Houston,
Texas,
77095
USA
Phone +1 281 856-1300
Fax +1 281 856-1325

SALES OFFICE

Emco Wheaton France

Emco Wheaton Division
Immeuble le Miroir
15-17 Bld du Général De Gaulle
92542 Montrouge Cedex
France
Phone + 33 1 46 12 41 41
Fax + 33 1 46 12 41 61

Emco Wheaton GmbH

Blue Danube Park,
Objekt 60,
2100 Korneuburg,
Austria
Phone +43 2262 64281-0
Fax +43 2262 6428120

Emco Wheaton GmbH

Presnenskaya emb. 10
Block C – Embankment Tower – of. 526
123317 Moscow
Russia
Phone +7 495 9677612
Fax +7 495 9677600

Emco Wheaton Asia Pacific

21-5F IOI Business Park, Bandar
Puchong Jaya,
Puchong, 47170,
Selangor, Malaysia
Phone +603 8075 7500
Fax +603 8075 4100
Email cwhu@emcowheaton.com

Gardner Denver International Ltd

PO Box 30804
Diraz, Manama
Bahrain
Phone + 973 17813187
Fax +973 17813186

MANUFACTURING FACILITIES

TODO

Todo

Gardner Denver Ltd

Channel Road
Westwood Industrial Estate
Margate
Kent
CT9 4JR
Phone +44 (0)1843 222850
Fax +44 (0)1843 295444

SALES OFFICE

TODO

Todo

Gardner Denver Ltd

Channel Road
Westwood Industrial Estate
Margate
Kent
CT9 4JR
Phone +44 (0)1843 222850
Fax +44 (0)1843 295444

TODO

Skovdevagen 8,
SE-545 31
Toreboda
Sweden
Phone +46 (0)506 19940
Fax +46 (0)506 19944

www.todo.se

enquiries@todo.se

www.emcowheaton.com

assist@emcowheaton.com

