

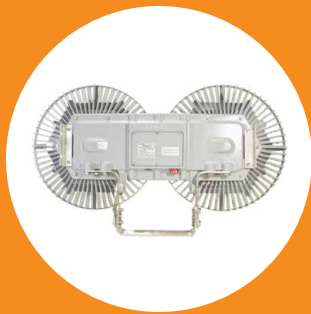


Dialight

DuroSite® LED End-to-End Linear Fixture - NSF
for Indoor and Outdoor Industrial Applications

On when it matters most.

Products and solutions that protect your business





Features & Benefits

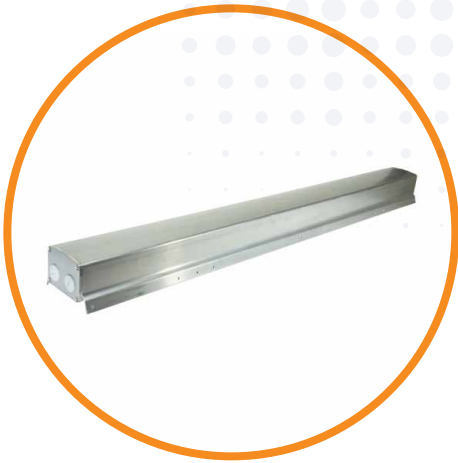
- 5 year warranty
- L70 rated for >100,000 hours @ 25°C
- Instant on/off operation
- Resistant to dust & vibration
- Excellent corrosion resistance to water & salt
- Universal input (120-277 VAC, 50/60Hz)
- Temperature compensation technology for longer life
- Integrated wiring box on each end for easy install
- Low profile housing for limited space applications
- Conforms to NSF/ANSI Standard 2 - Food Equipment

Application

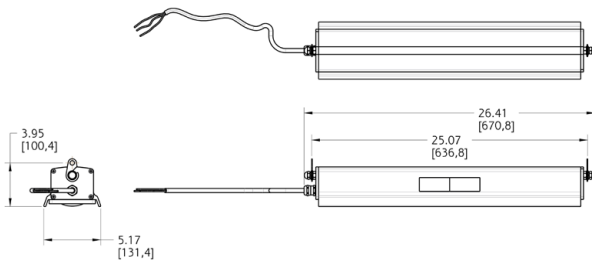
Dialight's DuroSite LED linear fixture replaces HID and fluorescent lighting fixtures in industrial applications. The DuroSite® LED Linear fixture's rugged solid state design makes it highly resistant to shock and vibration. Its fully gasketed IP66/67 rated enclosure makes it suitable for dusty & wet locations, its 1598/A rating guarantees added protection from salt water spray. The DuroSite LED Linear's superior design allows for wiring and mounting versatility and ease of installation for many lighting applications.

DuroSite® LED End-to-End Linear Fixture - NSF

NSF Model

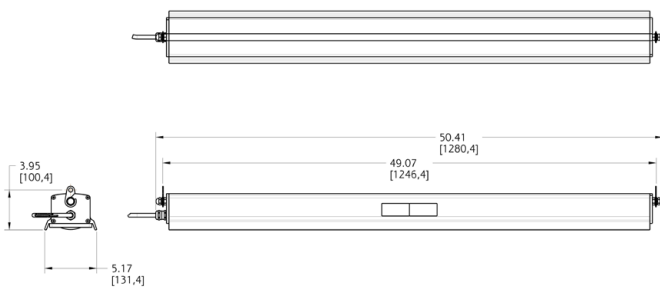


2' End - to - End Linear Dimensional



Dimensions in inches [mm]

4' End - to - End Linear Dimensional



Dimensions in inches [mm]

Certifications & Ratings

- UL 1598/A
- CSA C22.2 No. 250
- NSF certified for Splash and Non-Food Zones
- IP66/67
- NEMA 4X

Mechanical Information:

Fixture weight:	4' - 18 lb (8.2 kg) 2' - 13 lb (5.9 kg)
Shipping weight:	4' - 20 lb (9.1 kg) 2' - 15 lb (6.8 kg)
Mounting:	End cap with chain mount
Cable:	6ft Yellow SEOOW cord, 3-conductor 18AWG & cable gland

Electrical Specifications:

Operating voltage:	120-277 VAC
Power consumption:	See table
Operating temp:	-40°F to +149°F (-40°C to +65°C)
Harmonics:	61000-3-2
Transient protection:	FCC Title 47, Subpart B, Section 15, Class A device. RF Immunity; 10V/m, 80MHz-1GHz
Surge protection:	EN 61000-4-5 6kV line-to-line 6kV line-to-ground
THD:	< 20%
Power factor:	> 0.9

Construction:

Housing:	Extruded 6063 aluminum
Finish:	Superior dual coat finish - Sealed white polyester topcoat - Chemical-resistant epoxy primer
Lens:	Polycarbonate

Photometric Information:

CRI:	80
CCT:	5000K (cool white) 4000K (neutral white)
IES files:	Available at www.dialight.com

All values typical unless otherwise stated (tolerance +/- 10%)

* For information on chemical compatibility, please follow this link to reference Dialight's Chemical Compatibility Guide.
www.dialight.com/pubs/MDTFCHEMRFLX001.PDF

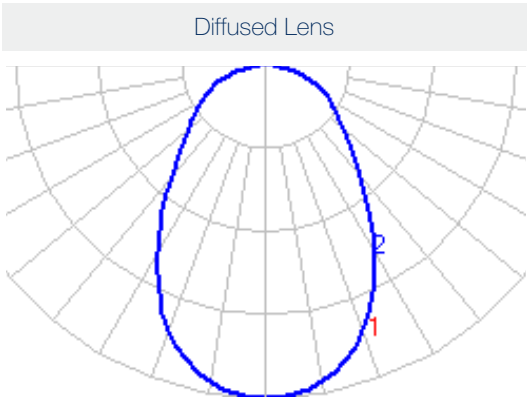
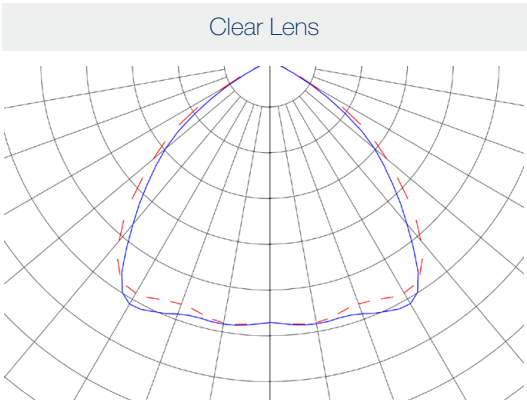
DuroSite® LED End-to-End Linear Fixture - NSF

Ordering Information - NSF Models

Part Number ¹	Length	CRI	Voltage	Lens	CCT	Fixture Lumens	Watt	lm/W	Beam Distribution
White Powder Coated Models									
LBN2MB3FNNFFWN	4'	80	120-277 VAC	Clear	5000K (cool white)	7,500	60	125	Medium
LBN6MB3FNNFFWN	4'	80	120-277 VAC	Diffused	5000K (cool white)	6,750	60	112	Medium
LAN2MB3BNNFFWN	2'	80	120-277 VAC	Clear	5000K (cool white)	4,000	32	125	Medium
LAN6MB3BNNFFWN	2'	80	120-277 VAC	Diffused	5000K (cool white)	3,500	32	109	Medium

All lumen values are typical (tolerance +/- 10%)
Part numbers listed in the above table are cool white. For neutral white models replace the 6th character with N. Ex. LBN2MB3FNNFFWN becomes LBN2MN3FNNFFWN

Light Distribution Pattern



North American HQ

1501 Route 34 South
Farmingdale, NJ 07727
Tel: 732-919-3119
Fax: 732-751-5778
info@dialight.com

EMEA Technical Centre

Ejby Industrivej 91 B
200 Glostrup
Tel: +45 8877 4545 (Denmark)
Tel: +44 1638 666541 (UK)
Tel: +49 89 12089 5713 (Germany)
Tel: +33 3 23 22 62 58 (France)
sales-europe@dialight.com

Houston

16830 Barker Springs Rd
Ste 407
Houston, TX 77084
Tel: 732-919-3119
Fax: 281-492-1531
info@dialight.com

Middle East

Level 42
Emirates Towers (Office Tower)
Sheikh Zayed Road
Dubai, United Arab Emirates
Fax: +971 (0) 4319 7686
Tel: +971 (0) 4319 7686

Australia

38 O'Malley Street
Osborne Park, WA 6017
Tel: +61 (0) 8 9244 7600
Fax: +61 (0) 8 9244 7601
info@dialight.com.au

Southeast Asia

33 Ubi Avenue 3
#07-72 Vertex (Tower A)
Singapore 408868
Tel: +65 6578 7157
Fax: +65 6578 7150
enquiry@dialight.com.sg

Brazil

Alameda Mercurio,
225 – American Park Empresarial NR
Indaiatuba – SP – 13347– 662
Tel: +55 (19) 3113-4300
Fax: +55 (19) 3113-4300
brasil@dialight.com

ALL VALUES ARE DESIGN OR TYPICAL VALUES WHEN MEASURED UNDER LABORATORY CONDITIONS. THE LIGHTING EFFICIENCY STATEMENTS CONTAINED HEREIN ARE CALCULATED ON A LUMEN PER WATTS BASIS WHEN COMPARING FIXTURES WITH SIMILAR FEATURES. ALL INFORMATION PROVIDED IS ACCURATE AS OF THE DATE OF PUBLICATION, IS SUBJECT TO CHANGE WITHOUT NOTICE AND DOES NOT FORM PART OF ANY CONTRACT WITH DIALIGHT. DIALIGHT DOES NOT WARRANT OR REPRESENT THAT ITS PRODUCTS ARE FIT FOR ANY PARTICULAR PURPOSE AND HAS NO RESPONSIBILITY FOR THE [INAPPROPRIATE/UNAUTHORISED/NON-APPROVED] USE OF ANY DIALIGHT PRODUCTS BY THE END USER.

Dialight reserves the right to make changes at any time in order to supply the best product possible.

The most current version of this document will always be available at: www.dialight.com