

## DUST COLLECTORS





**HENNlich ENGINEERING is the leading manufacturer of air dust collectors.**

**We produce low-performance standalone dust collectors for local filtration as well as high-performance modular dust collectors which can be easily combined to assemblies with the required flowrate.**

#### **BENEFITS**

- control of dust pollution
- avoidance of penalties imposed by authorities for dust
- JET-PULS recovery system
- residual concentration < 10 mg/m<sup>3</sup> (on request < 1 mg/m<sup>3</sup>)
- unit assembly construction
- easy maintenance & simple operation
- compact design

#### **APPLICATIONS & INDUSTRIES**

- storage silos & bunkers
- transfer points of belt conveyors
- mines & quarries
- coal handling
- food industry
- wood processing
- steel & slag
- chemical industry
- welding & grinding
- foundries

#### **OUR CUSTOMERS**

- SITA SUEZ
- ČEZ
- Seiko Flowcontrol
- Č.O.B. Beňov
- Carbo Energia
- Keramost
- Dneprostal
- Target
- Lafarge
- PKN Orlen
- Saint Gobain
- C-Energy
- OMYA-Ural
- ACL Technology
- ERMAC
- Kazakhmys
- Holcim
- Carmeuse
- Ethanol Energy
- Veolia Group
- Irkutskenergo
- Novo-Irkutskaya TES
- Severozapadnaya fosfornaya kompaniya
- Kaluzhskii metallurgiceskii zavod
- Saicanature
- Ivano-Frankovskcement
- Morfico

**The dust collector is designed with the following parameters:**

- requested flow rate and filter area
- dust physical properties (abrasive, corrosive, explosive etc.)
- application type (silo dedusting, local filtration, central dedusting)
- rest dust manipulation method (rotary feeder, dust collection box, back to silo or belt conveyor etc.)
- location (inside, outside) and the construction dimensions
- temperature (ambient, product)

Air volume	Flow rate (m <sup>3</sup> /h)	Line	Type	Filter area (m <sup>2</sup> )	Chapter	Application
low	up to 1 000	N	N1000	15,0	1.1.	silo dedusting
			N1000 V	15,0	1.2.	silo dedusting, local filtration
			N1000 V/KN	15,0	1.3.	silo dedusting, local filtration
	1 000-1 500		N1500	24,0	1.4.	silo dedusting
			N1500 V	24,0	1.5.	silo dedusting, local filtration
middle	up to 1 000	P	P0600	17,8	2.1.	silo dedusting, local filtration
	1 000-1 800		P1200	35,6	2.2.	silo dedusting, local filtration
	1 800-2 700		P1500	44,5	2.3.	silo dedusting, local filtration
	1 800-2 700		P1500/KR3	44,5	2.5.	local filtration
	2 700-4 000		P1500/5,5	44,5	2.4.	local filtration
	2 700-4 000		P1500/KR5,5	44,5	2.6.	local filtration
high	3 800-5 940	M	M1500-1-18	95,0	3.1.	industrial filtration
	5 100-8 240		M1500-1-24	118,0	3.2.	industrial filtration
	6 000-8 400		M2000-1-18	118,0	3.3.	industrial filtration
	6 000-12 000		M2000-1-24	158,0	3.4.	industrial filtration
	10 000-15 500		M2000-2-36	236,0	3.5.	industrial filtration
	16 600		M2000-1-24	158,0	3.6.	industrial filtration
	13 500-21 000		M2000-2-48	316,0	3.7.	industrial filtration
	15 000-23 500		M2000-3-54	354,0	3.8.	industrial filtration
	20 000-31 500		M2000-3-72	474,0	3.9.	industrial filtration
			M2000-4-72	474,0	3.10.	industrial filtration
	27 000-42 000		M2000-4-96	632,0	3.11.	industrial filtration

# 1. SILO VENTING FILTERS (N-SERIES)

## 1.1. TYPE N1000

### DESCRIPTION

- silo venting filter N1000 is a cylindrically shaped dust collector for dedusting of pneumatically filled silos

### OPERATION QUALITIES

- flow rate 1000 m<sup>3</sup>/h
- filter area 15 m<sup>2</sup>
- residual dust concentration at the output <10 mg/m<sup>3</sup>
- temperature resistance -20 °C / +80 °C
- compressed air needed 6 bar, consumption 6 Nm<sup>3</sup>/h
- pressure loss 1500 Pa
- weight: 97 kg

### DESIGN

- carbon steel pressure resistant body
- dust collector body diameter 600 mm
- **filtered air blows away through the hole between casing and top cover**
- filter element: 1x filter cartridge made of polyester in basic design diameter 325 mm, length 1000 mm
- air tank with JET-PULS filter cartridges recovery and timer
- pressure air connection: internal thread G ½"
- electromagnetic valve (1 pc), safety valve (1 pc), pressure regulator (1 pc)

### ADDITIONAL ACCESSORIES

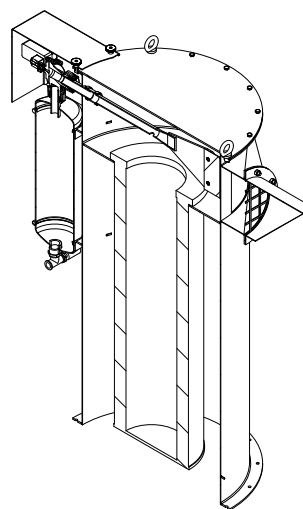
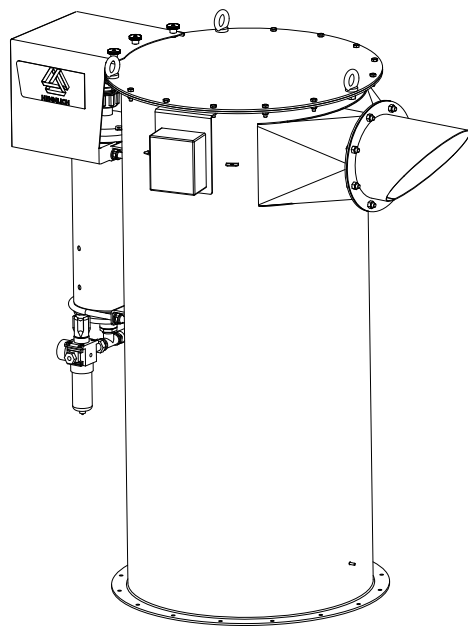
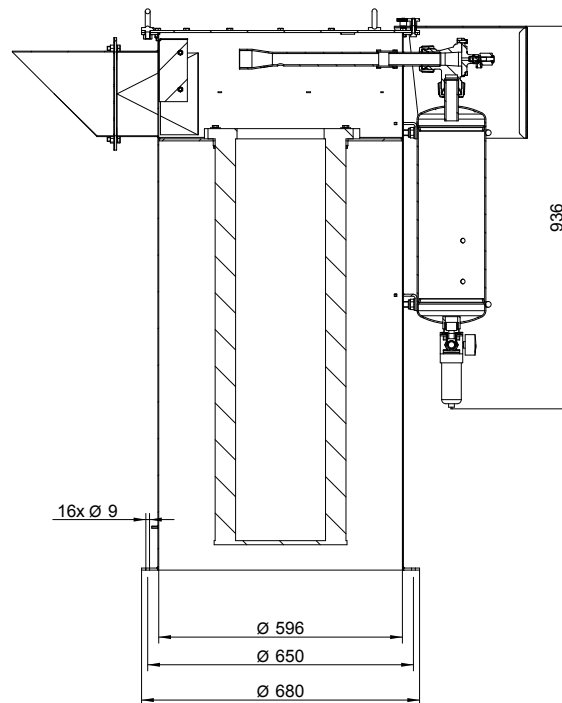
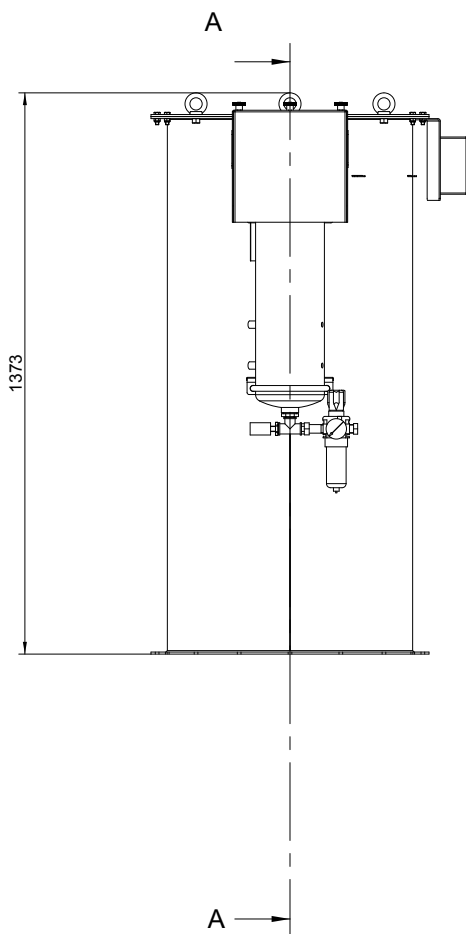
- ATEX, food or chemical industry design
- non-standard temperature design -40 °C / +150 °C
- available also with mechanical filter cartridge recovery

### BENEFITS

- robust design
- easy filter element replacement
- low dust emission level
- excellent access to every filter component
- perfect recovery of filter element with built-in JET-PULS system



Silo venting filter N1000 is a cylindrically shaped dust collector. It is mainly used for dedusting of pneumatically filled silos.



# 1. SILO VENTING FILTERS (N-SERIES)

## 1.2. TYPE N1000 V

### DESCRIPTION

- silo venting filter N1000 V is a cylindrically shaped dust collector for dedusting of silos

### OPERATION QUALITIES

- flow rate 1000 m<sup>3</sup>/h
- filter area 15 m<sup>2</sup>
- fan 1,5 kW
- residual dust concentration at the output <10 mg/m<sup>3</sup>
- temperature resistance -20 °C / +80 °C
- compressed air needed 6 bar, consumption 6 Nm<sup>3</sup>/h
- pressure loss 1500 Pa
- weight: 138 kg

### DESIGN

- carbon steel pressure resistant body
- dust collector body diameter 600 mm
- filter element: 1x filter cartridge made of polyester in basic design diameter 325 mm, length 1000 mm
- air tank with JET-PULS filter cartridges recovery and timer
- pressure air connection: internal thread G ½"
- electromagnetic valve (1 pc), safety valve (1 pc), pressure regulator (1 pc)

### ADDITIONAL ACCESSORIES

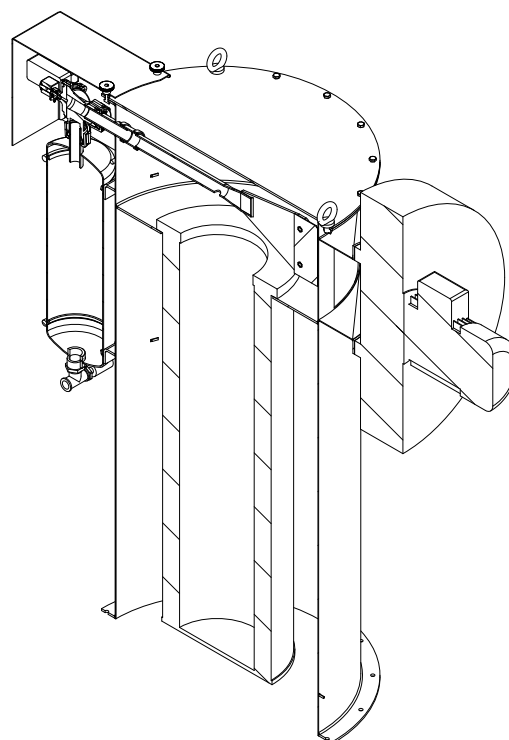
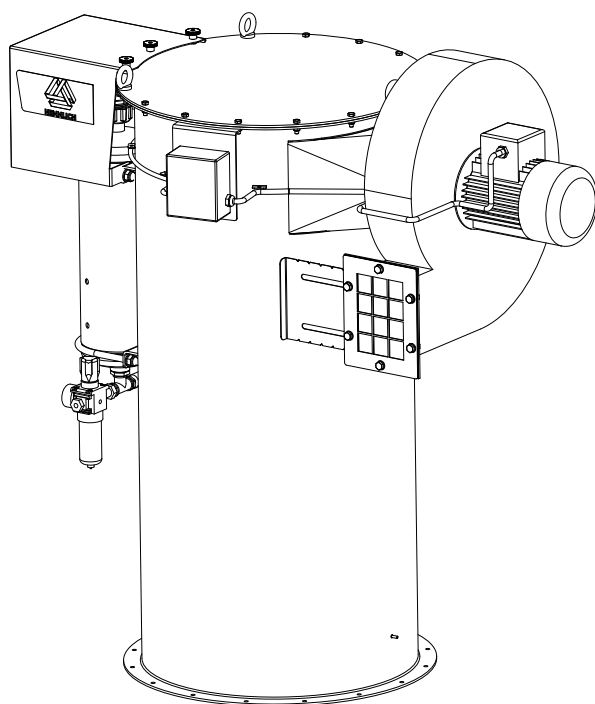
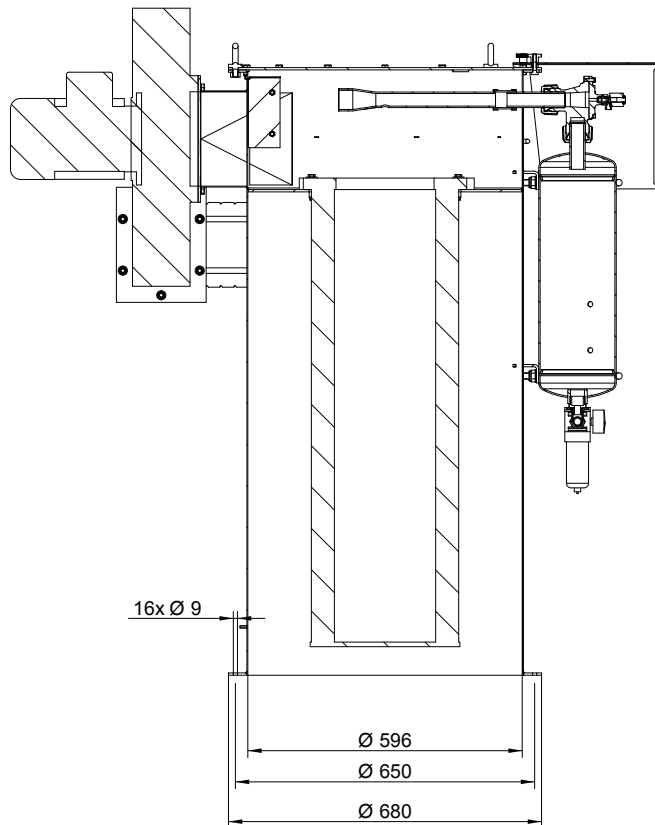
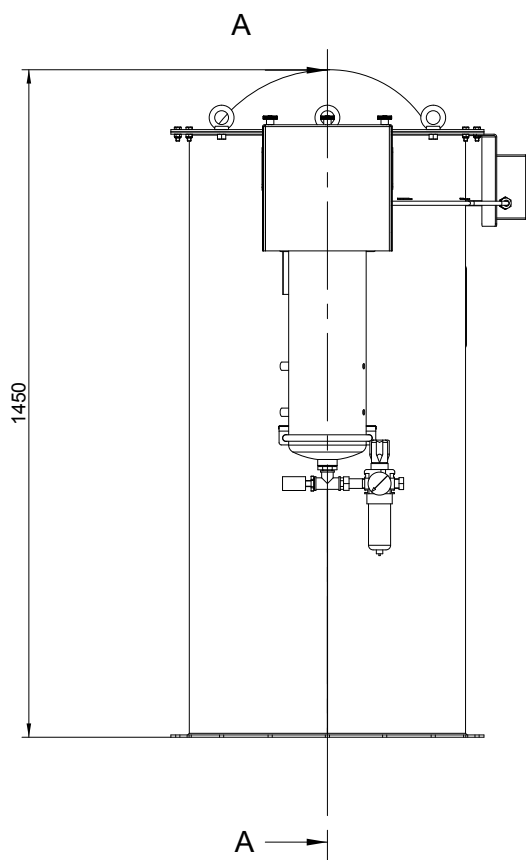
- ATEX, food or chemical industry design
- non-standard temperature design -40 °C / +150 °C
- available also with mechanical filter cartridge recovery

### BENEFITS

- robust design
- easy filter element replacement
- low dust emission level
- excellent access to every filter component
- perfect recovery of filter element with built-in JET-PULS system



Silo venting filter N1000 V is a cylindrically shaped dust collector. It is mainly used for dedusting of silos and for local filtration.





# 1. SILO VENTING FILTERS (N-SERIES)

## 1.3. TYPE N1000 V/KN

### DESCRIPTION

- silo venting filter N1000 V is a cylindrically shaped dust collector with dust collection box and support construction
- suitable for local dedusting (for example – big bags, welding operations etc.)

### OPERATION QUALITIES

- flow rate 1000 m<sup>3</sup>/h
- filter area 15 m<sup>2</sup>
- fan 1,5 kW
- residual dust concentration at the output <10 mg/m<sup>3</sup>
- temperature resistance -20 °C / +80 °C
- compressed air needed 6 bar, consumption 6 Nm<sup>3</sup>/h
- pressure loss 1500 Pa
- weight: 206 kg

### DESIGN

- carbon steel pressure resistant body
- dust collector body diameter 600 mm
- filter element: 1x filter cartridge made of polyester in basic design diameter 325 mm, length 1000 mm
- air tank with JET-PULS filter cartridges recovery and timer
- pressure air connection: internal thread G ½"
- electromagnetic valve (1 pc), safety valve (1 pc), pressure regulator (1 pc)
- dust collection box and support construction

### ADDITIONAL ACCESSORIES

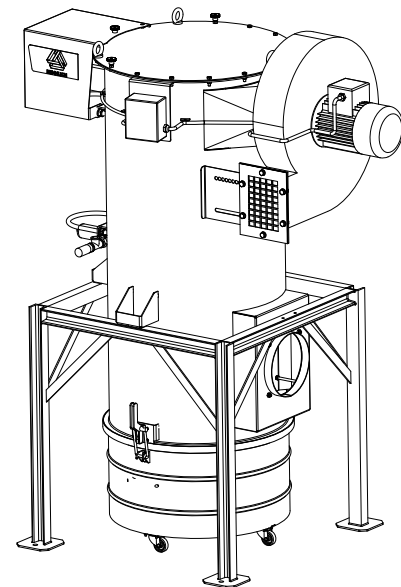
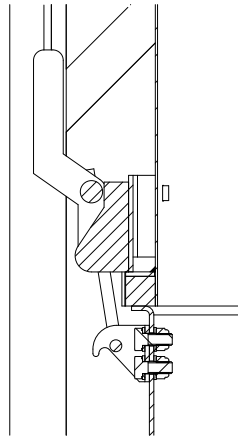
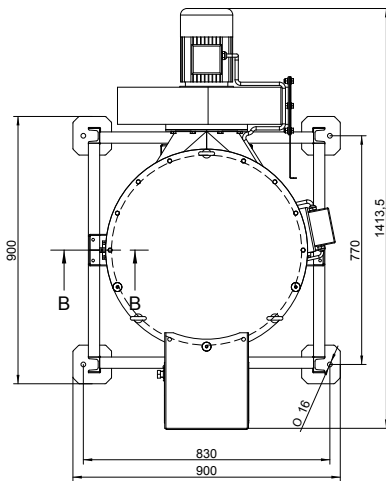
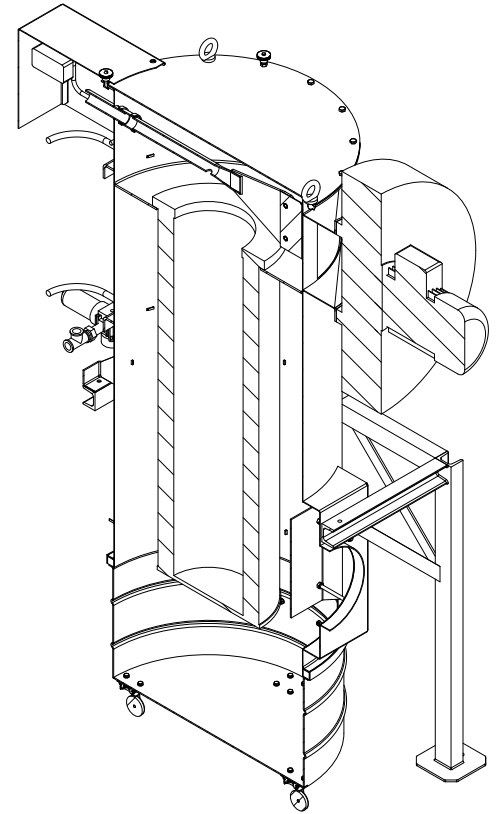
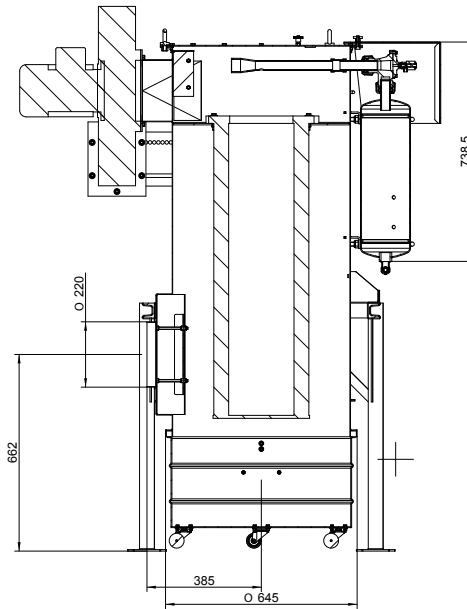
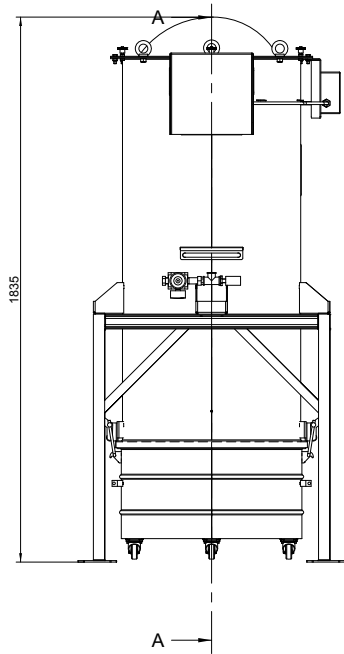
- ATEX, food or chemical industry design
- non-standard temperature design -40 °C / +150 °C
- available also with mechanical filter cartridge recovery

### BENEFITS

- robust design
- easy filter element replacement
- low dust emission level
- excellent access to every filter component
- perfect recovery of filter element with built-in JET-PULS system



Silo venting filter N1000 V/KN is a cylindrically shaped dust collector. It is equipped with the support construction and the dust collection box. It is mainly used for local filtration.



# 1. SILO VENTING FILTERS (N-SERIES)

## 1.4. TYPE N1500

### DESCRIPTION

- silo venting filter N1500 is a cylindrically shaped dust collector for dedusting of pneumatically filled silos

### OPERATION QUALITIES

- flow rate 1500 m<sup>3</sup>/h
- filter area 24 m<sup>2</sup>
- residual dust concentration at the output <10 mg/m<sup>3</sup>
- temperature resistance -20 °C / +80 °C
- compressed air needed 6 bar, consumption 6 Nm<sup>3</sup>/h
- pressure loss 1500 Pa
- weight: 132 kg

### DESIGN

- carbon steel pressure resistant body
- dust collector body diameter 600 mm
- **filtered air blows away through the hole between casing and top cover**
- filter element: 1x filter cartridge made of polyester in basic design diameter 325 mm, length 1500 mm
- air tank with JET-PULS filter cartridges recovery and timer
- pressure air connection: internal thread G ½"
- electromagnetic valve (1 pc), safety valve (1 pc), pressure regulator (1 pc)

### ADDITIONAL ACCESSORIES

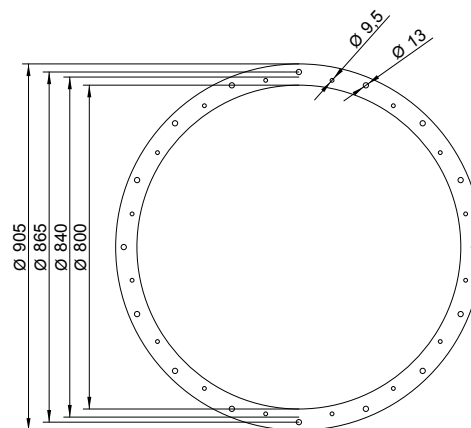
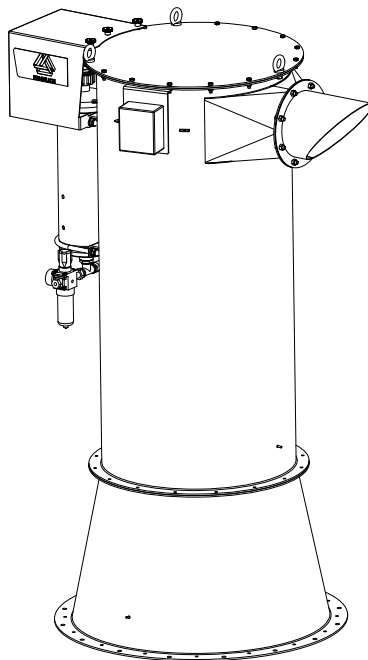
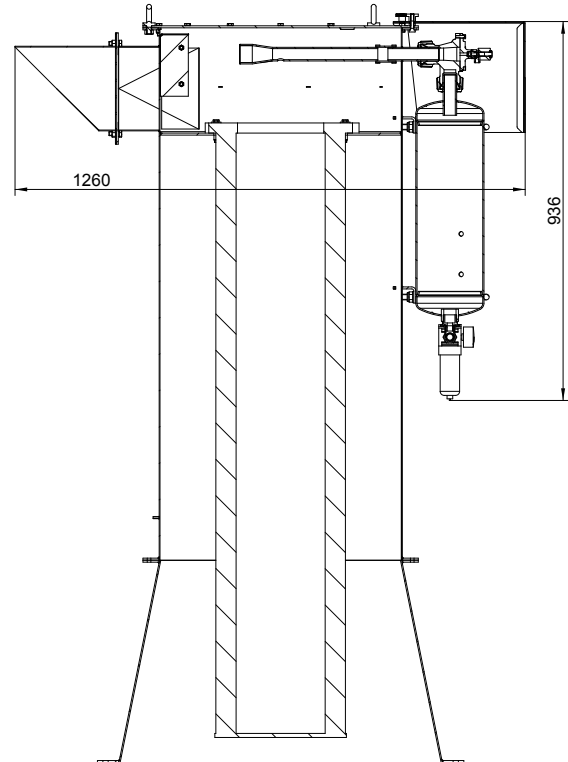
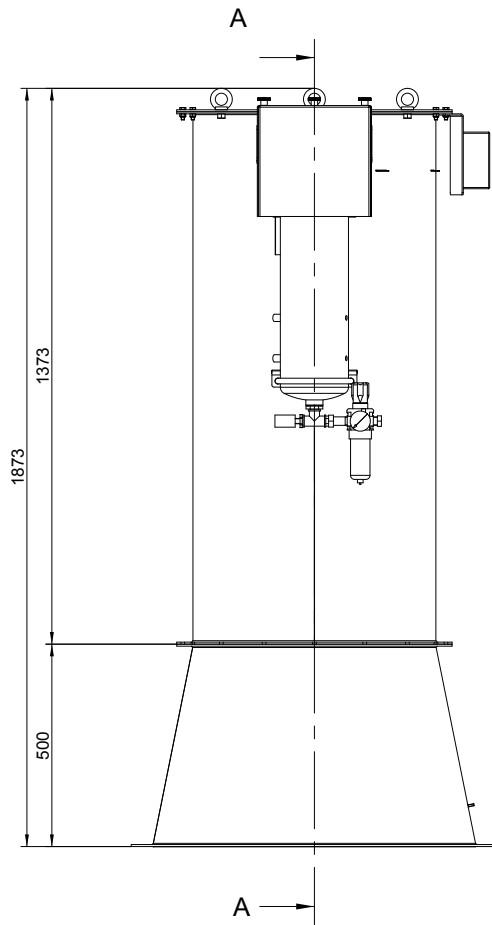
- ATEX, food or chemical industry design
- non-standard temperature design -40 °C / +150 °C
- available also with mechanical filter cartridge recovery

### BENEFITS

- robust design
- easy filter element replacement
- low dust emission level
- excellent access to every filter component
- perfect recovery of filter element with built-in JET-PULS system



Silo venting filter N1500 is a cylindrically shaped dust collector. It is mainly used for dedusting of pneumatically filled silos.



# 1. SILO VENTING FILTERS (N-SERIES)

## 1.5. TYPE N1500 V

### DESCRIPTION

- silo venting filter N1500 V is a cylindrically shaped dust collector for dedusting of silos

### OPERATION QUALITIES

- flow rate 1500 m<sup>3</sup>/h
- filter area 24 m<sup>2</sup>
- fan 2,2 kW
- residual dust concentration at the output <10 mg/m<sup>3</sup>
- temperature resistance -20 °C / +80 °C
- compressed air needed 6 bar, consumption 6 Nm<sup>3</sup>/h
- pressure loss 1500 Pa
- weight: 173 kg

### DESIGN

- carbon steel pressure resistant body
- dust collector body diameter 600 mm
- filter element: 1x filter cartridge made of polyester in basic design diameter 325 mm, length 1500 mm
- air tank with JET-PULS filter cartridges recovery and timer
- pressure air connection: internal thread G ½"
- electromagnetic valve (1 pc), safety valve (1 pc), pressure regulator (1 pc)

### ADDITIONAL ACCESSORIES

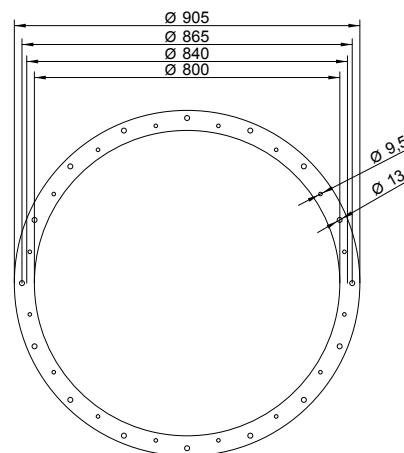
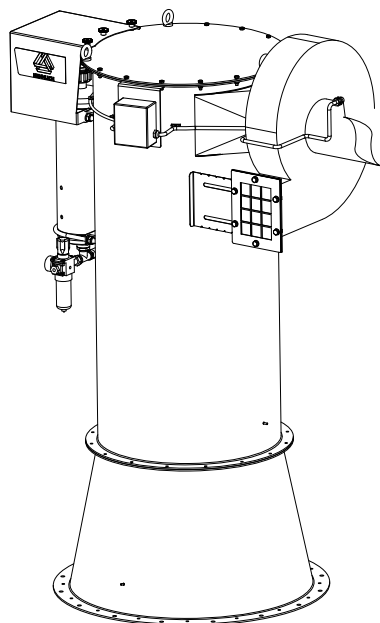
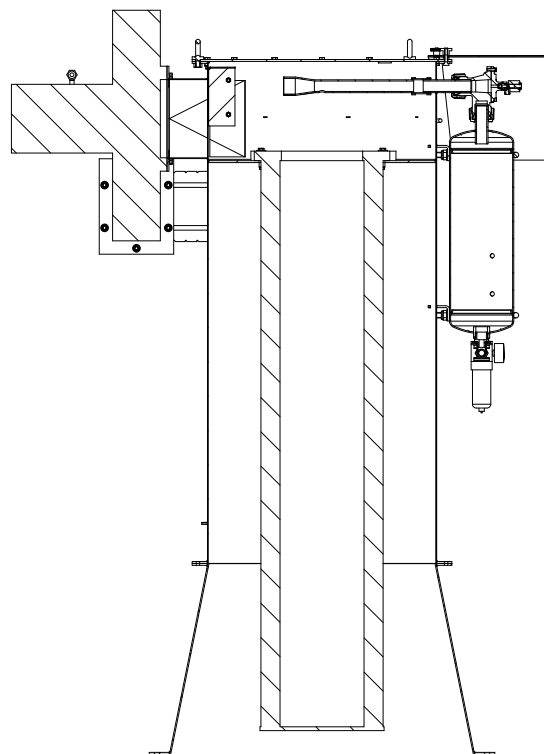
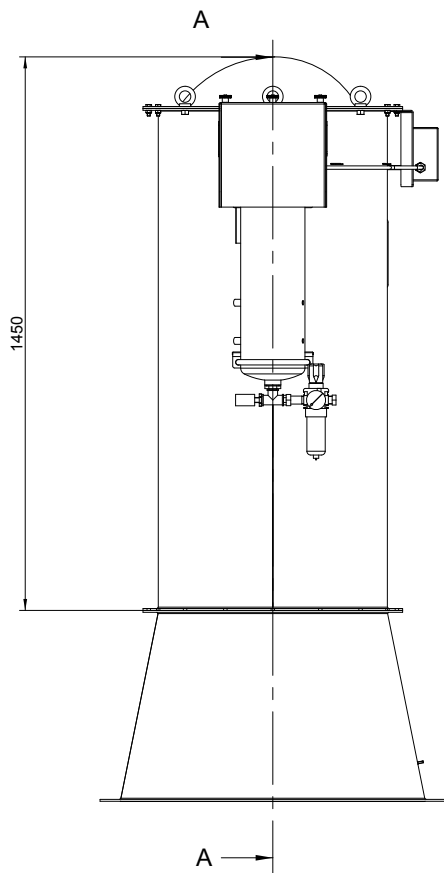
- ATEX, food or chemical industry design
- non-standard temperature design -40 °C / +150 °C
- available also with mechanical filter cartridge recovery

### BENEFITS

- robust design
- easy filter element replacement
- low dust emission level
- excellent access to every filter component
- perfect recovery of filter element with built-in JET-PULS system



Silo venting filter N1500 V is a cylindrically shaped dust collector. It is mainly used for dedusting of silos and for local filtration.



## 2. LOCAL DUST COLLECTORS (P-SERIES)

### 2.1. TYPE P0600

#### DESCRIPTION

- **box-shaped dust collector for dedusting of storage silos, belt conveyor transfer points, welding and cutting machines etc.**

#### OPERATION QUALITIES

- flow rate 1000 m<sup>3</sup>/h
- filter area 17,8 m<sup>2</sup>
- fan: 1,5 kW
- residual dust concentration at the output <10 mg/m<sup>3</sup>
- temperature resistance -20 °C / +80 °C
- compressed air needed 6 bar, consumption 6 Nm<sup>3</sup>/h
- pressure loss 1500 Pa
- weight: 195 kg

#### DESIGN

- carbon steel pressure resistant body
- filter element: 9x filter cartridge made of polyester in basic design diameter 145 mm, length 600 mm
- air tank with JET-PULS filter cartridges recovery and timer
- pressure air connection: internal thread G 1/2"
- pressure switch to indicate the filter cartridges are plugged
- electromagnetic valve (3 pcs), safety valve (1 pc), pressure regulator (1 pc)

#### ADDITIONAL ACCESSORIES

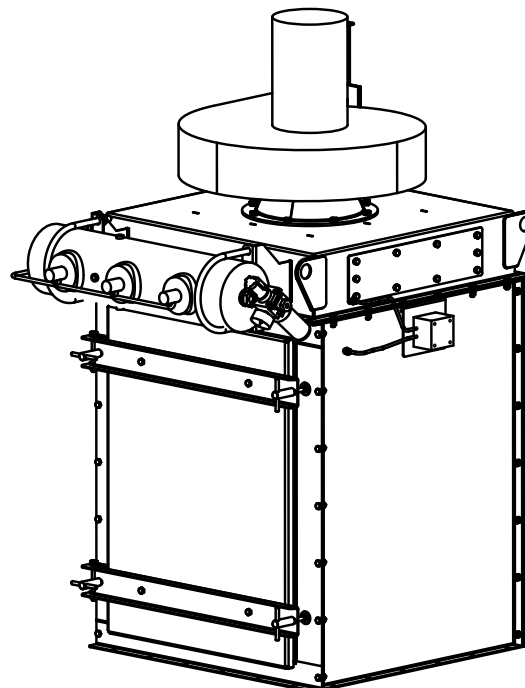
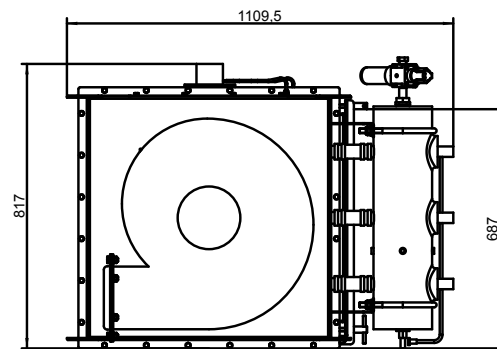
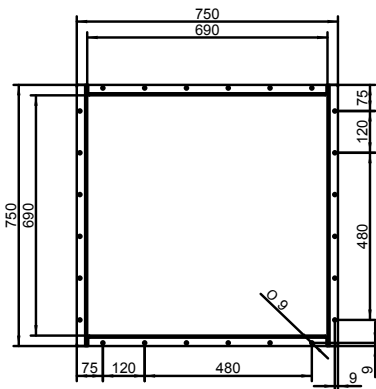
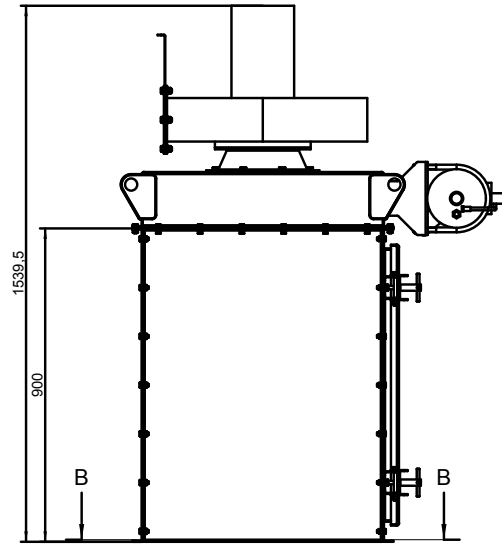
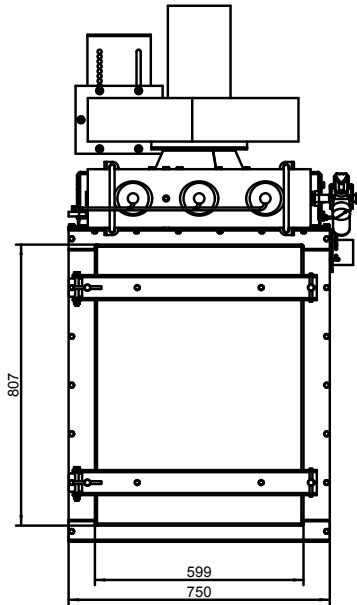
- electric control box: 3 x 400 VAC, 50 Hz
- dust collection box or rotary feeder with support construction
- noise silencer
- non-standard temperature design -40 °C / +150 °C
- available also with mechanical filter cartridge recovery

#### BENEFITS

- robust design
- easy filter element replacement
- low dust emission level
- excellent access to every filter component
- perfect recovery of filter element with built-in JET-PULS system



Dust collector P0600 is a box-shaped device. It is used for local filtration - dedusting of storage silos, belt conveyor transfer points, welding operations etc.





## 2. LOCAL DUST COLLECTORS (P-SERIES)

### 2.2. TYPE P1200

#### DESCRIPTION

- **box-shaped dust collector for dedusting of storage silos, belt conveyor transfer points, welding and cutting machines etc.**

#### OPERATION QUALITIES

- flow rate 1800 m<sup>3</sup>/h
- filter area 35,6 m<sup>2</sup>
- fan: 2,2 kW
- residual dust concentration at the output <10 mg/m<sup>3</sup>
- temperature resistance -20 °C / +80 °C
- compressed air needed 6 bar, consumption 6 Nm<sup>3</sup>/h
- pressure loss 1500 Pa
- weight: 276 kg

#### DESIGN

- carbon steel pressure resistant body
- filter element: 9x filter cartridge made of polyester in basic design diameter 145 mm, length 1200 mm
- air tank with JET-PULS filter cartridges recovery and timer
- pressure air connection: internal thread G ½"
- pressure switch to indicate the filter cartridges are plugged
- electromagnetic valve (3 pcs), safety valve (1 pc), pressure regulator (1 pc)

#### ADDITIONAL ACCESSORIES

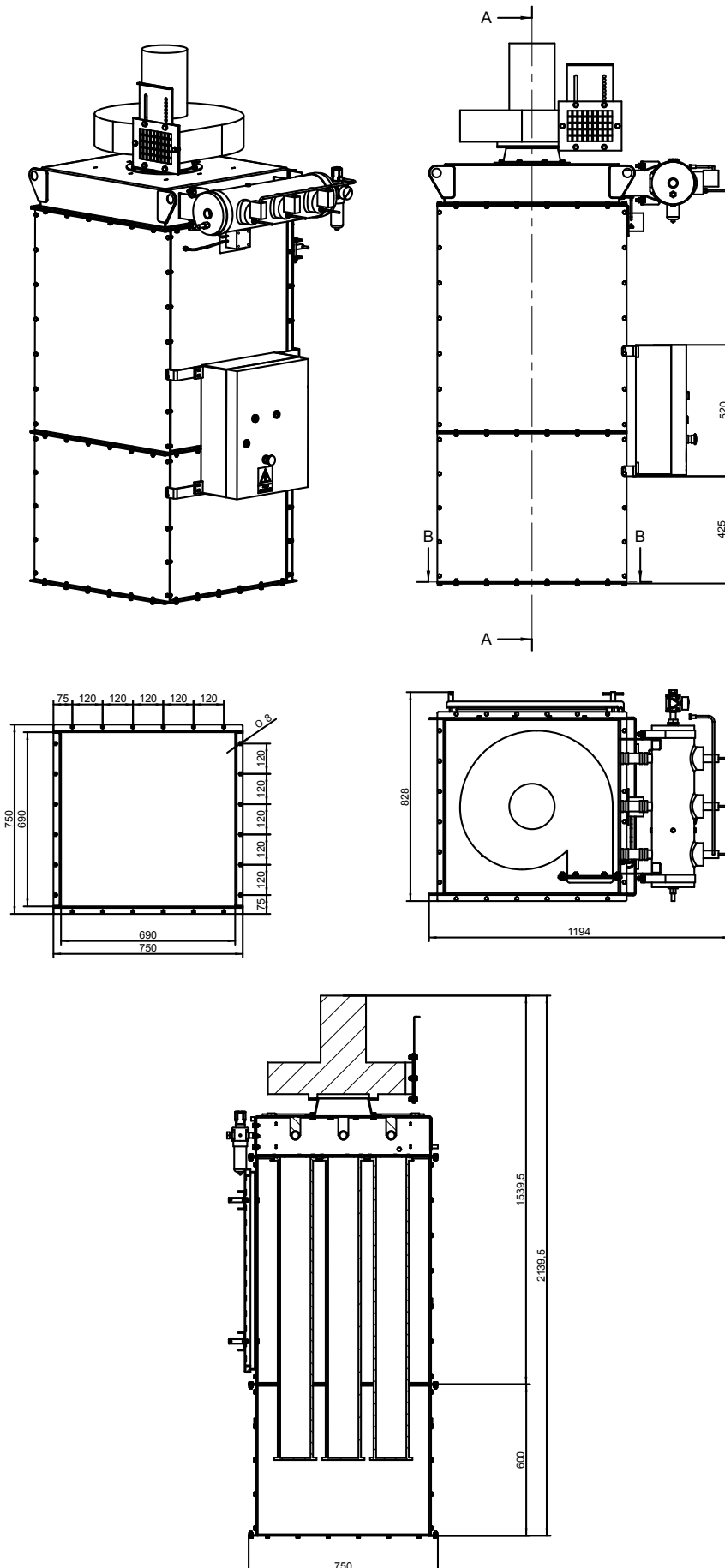
- electric control box: 3 x 400 VAC, 50 Hz
- dust collection box or rotary feeder with support construction
- noise silencer
- non-standard temperature design -40 °C / +150 °C
- available also with mechanical filter cartridge recovery

#### BENEFITS

- robust design
- easy filter element replacement
- low dust emission level
- excellent access to every filter component
- perfect recovery of filter element with built-in JET-PULS system



Dust collector P1200 is a box-shaped device. It is used for local filtration - dedusting of storage silos, belt conveyor transfer points, welding operations etc.



## 2. LOCAL DUST COLLECTORS (P-SERIES)

### 2.3. TYPE P1500

#### DESCRIPTION

- **box-shaped dust collector for dedusting of storage silos, belt conveyor transfer points, welding and cutting machines etc.**

#### OPERATION QUALITIES

- flow rate 2700 m<sup>3</sup>/h
- filter area 44,5 m<sup>2</sup>
- fan: 3,0 kW
- residual dust concentration at the output <10 mg/m<sup>3</sup>
- temperature resistance -20 °C / +80 °C
- compressed air needed 6 bar, consumption 6 Nm<sup>3</sup>/h
- pressure loss 1500 Pa
- weight: 320 kg

#### DESIGN

- carbon steel pressure resistant body
- filter element: 9x filter cartridge made of polyester in basic design diameter 145 mm, length 1500 mm
- air tank with JET-PULS filter cartridges recovery and timer
- pressure air connection: internal thread G ½"
- pressure switch to indicate the filter cartridges are plugged
- electromagnetic valve (3 pcs), safety valve (1 pc), pressure regulator (1 pc)

#### ADDITIONAL ACCESSORIES

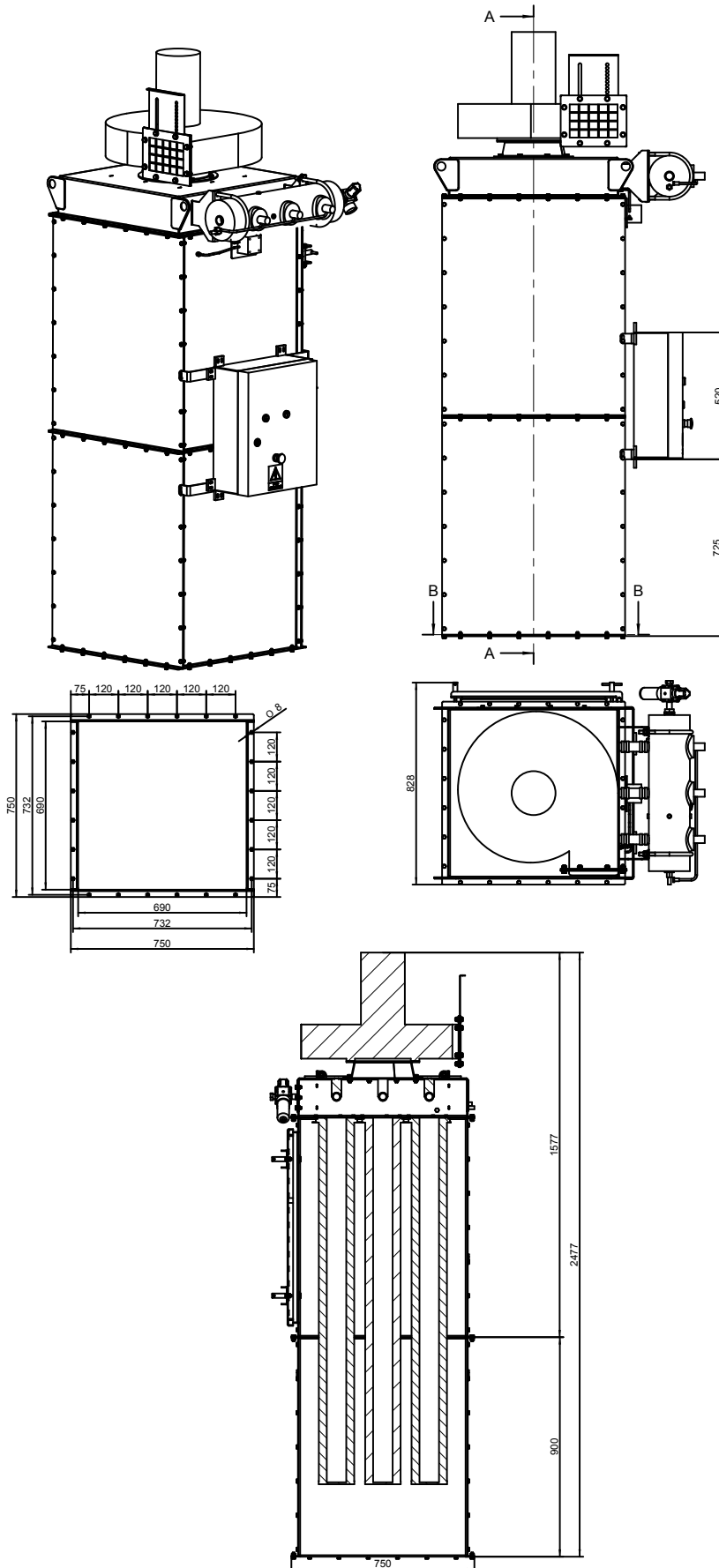
- electric control box: 3 x 400 VAC, 50 Hz
- dust collection box or rotary feeder with support construction
- noise silencer
- non-standard temperature design -40 °C / +150 °C
- available also with mechanical filter cartridge recovery

#### BENEFITS

- robust design
- easy filter element replacement
- low dust emission level
- excellent access to every filter component
- perfect recovery of filter element with built-in JET-PULS system



Dust collector P1500 is a box-shaped device. It is used for local filtration - dedusting of storage silos, belt conveyor transfer points, welding operations etc.



## 2. LOCAL DUST COLLECTORS (P-SERIES)

### 2.4. TYPE P1500/5,5

#### DESCRIPTION

- box-shaped dust collector for dedusting of storage silos, belt conveyor transfer points, welding and cutting machines etc.

#### OPERATION QUALITIES

- flow rate 4000 m<sup>3</sup>/h
- filter area 44,5 m<sup>2</sup>
- fan: 5,5 kW
- residual dust concentration at the output <10 mg/m<sup>3</sup>
- temperature resistance -20 °C / +80 °C
- compressed air needed 6 bar, consumption 6 Nm<sup>3</sup>/h
- pressure loss 1500 Pa
- weight: 327 kg

#### DESIGN

- carbon steel pressure resistant body
- filter element: 9x filter cartridge made of polyester in basic design diameter 145 mm, length 1500 mm
- air tank with JET-PULS filter cartridges recovery and timer
- pressure air connection: internal thread G 1/2"
- pressure switch to indicate the filter cartridges are plugged
- electromagnetic valve (3 pcs), safety valve (1 pc), pressure regulator (1 pc)

#### ADDITIONAL ACCESSORIES

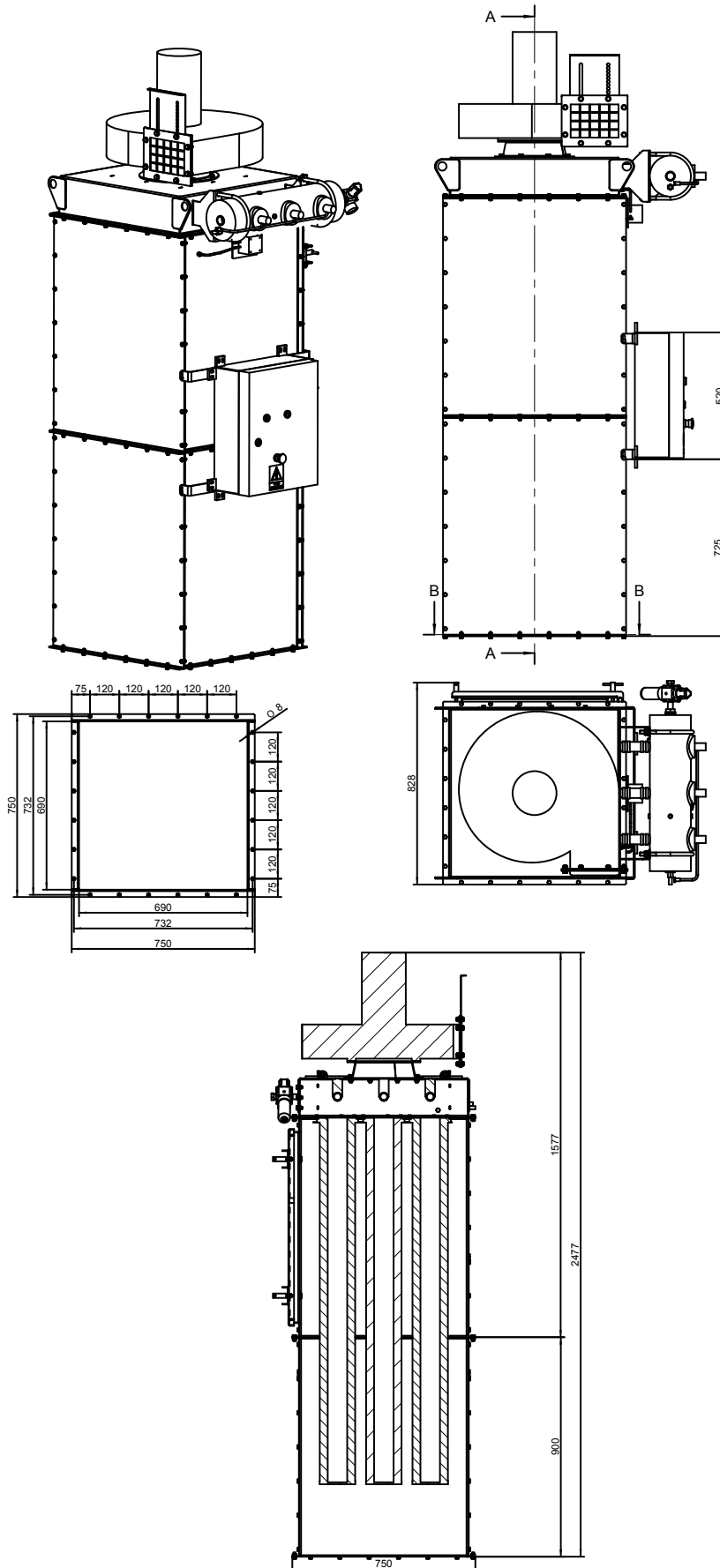
- electric control box: 3 x 400 VAC, 50 Hz
- dust collection box or rotary feeder with support construction
- noise silencer
- non-standard temperature design -40 °C / +150 °C
- available also with mechanical filter cartridge recovery

#### BENEFITS

- robust design
- easy filter element replacement
- low dust emission level
- excellent access to every filter component
- perfect recovery of filter element with built-in JET-PULS system



Dust collector P1500/5,5 is a box-shaped device. It is used for local filtration - dedusting of storage silos, belt conveyor transfer points, welding operations etc.



## 2. LOCAL DUST COLLECTORS (P-SERIES)

### 2.5. TYPE P1500/KR3

#### DESCRIPTION

- box-shaped dust collector for dedusting of storage silos, belt conveyor transfer points, welding and cutting machines etc.
- equipped with dust hopper, support construction and rotary feeder

#### OPERATION QUALITIES

- flow rate 2700 m<sup>3</sup>/h
- filter area 44,5 m<sup>2</sup>
- fan: 3,0 kW
- residual dust concentration at the output <10 mg/m<sup>3</sup>
- temperature resistance -20 °C / +80 °C
- compressed air needed 6 bar, consumption 6 Nm<sup>3</sup>/h
- pressure loss 1500 Pa
- weight: 519 kg

#### DESIGN

- carbon steel pressure resistant body
- filter element: 9x filter cartridge made of polyester in basic design diameter 145 mm, length 1500 mm
- air tank with JET-PULS filter cartridges recovery and timer
- electromagnetic valve (3 pcs), safety valve (1 pc), pressure regulator (1 pc)
- pressure air connection: internal thread G ½"
- pressure switch to indicate the filter cartridges are plugged
- support construction with dust hopper
- rotary feeder 250 x 250, 0.55 kW
- electric control box: 3 x 400 VAC, 50 Hz

#### ADDITIONAL ACCESSORIES

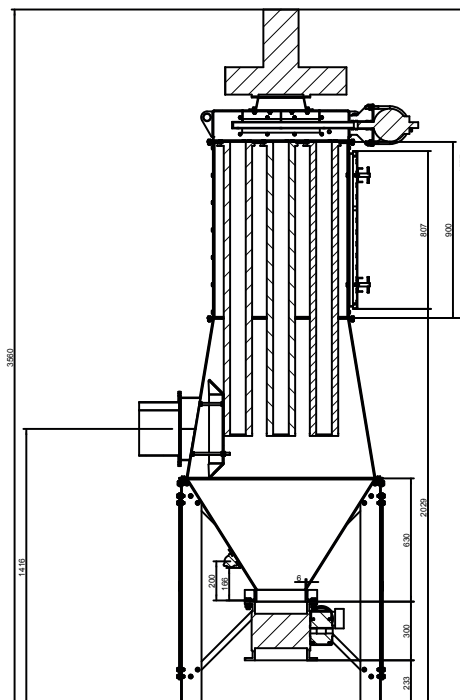
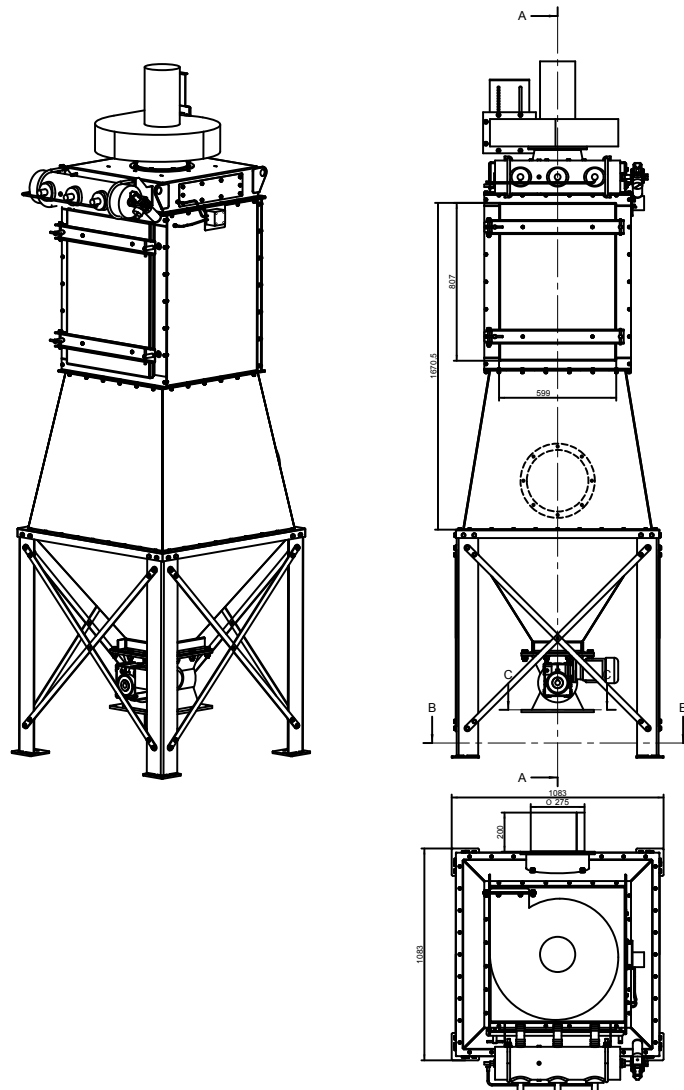
- ATEX, food or chemical industry design
- non-standard temperature design -40 °C / +150 °C
- available also with mechanical filter cartridge recovery

#### BENEFITS

- robust design
- easy filter element replacement
- low dust emission level
- excellent access to every filter component
- perfect recovery of filter element with built-in JET-PULS system



Dust collector P1500/KR3 is a box-shaped device. It is used for local filtration - dedusting of storage silos, belt conveyor transfer points, welding operations etc. It is equipped with the support construction, dust hopper and rotary feeder.





## 2. LOCAL DUST COLLECTORS (P-SERIES)

### 2.6. P1500/KR5,5

#### DESCRIPTION

- box-shaped dust collector for dedusting of storage silos, belt conveyor transfer points, welding and cutting machines etc.
- equipped with dust hopper, support construction and rotary feeder

#### OPERATION QUALITIES

- flow rate 4000 m<sup>3</sup>/h
- filter area 44,5 m<sup>2</sup>
- fan: 5,5 kW
- residual dust concentration at the output <10 mg/m<sup>3</sup>
- temperature resistance -20 °C / +80 °C
- compressed air needed 6 bar, consumption 6 Nm<sup>3</sup>/h
- pressure loss 1500 Pa
- weight: 549 kg

#### DESIGN

- carbon steel pressure resistant body
- filter element: 9x filter cartridge made of polyester in basic design diameter 145 mm, length 1500 mm
- air tank with JET-PULS filter cartridges recovery and timer
- electromagnetic valve (3 pcs), safety valve (1 pc), pressure regulator (1 pc)
- pressure air connection: internal thread G ½"
- pressure switch to indicate the filter cartridges are plugged
- support construction with dust hopper
- rotary feeder 250 x 250, 0.55 kW
- electric control box: 3 x 400 VAC, 50 Hz

#### ADDITIONAL ACCESSORIES

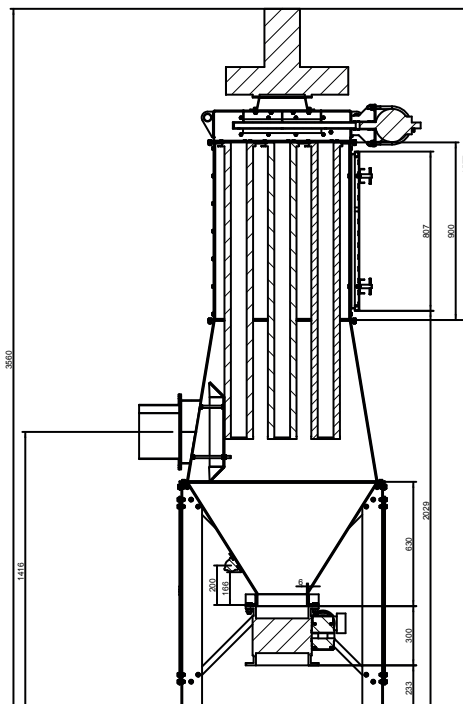
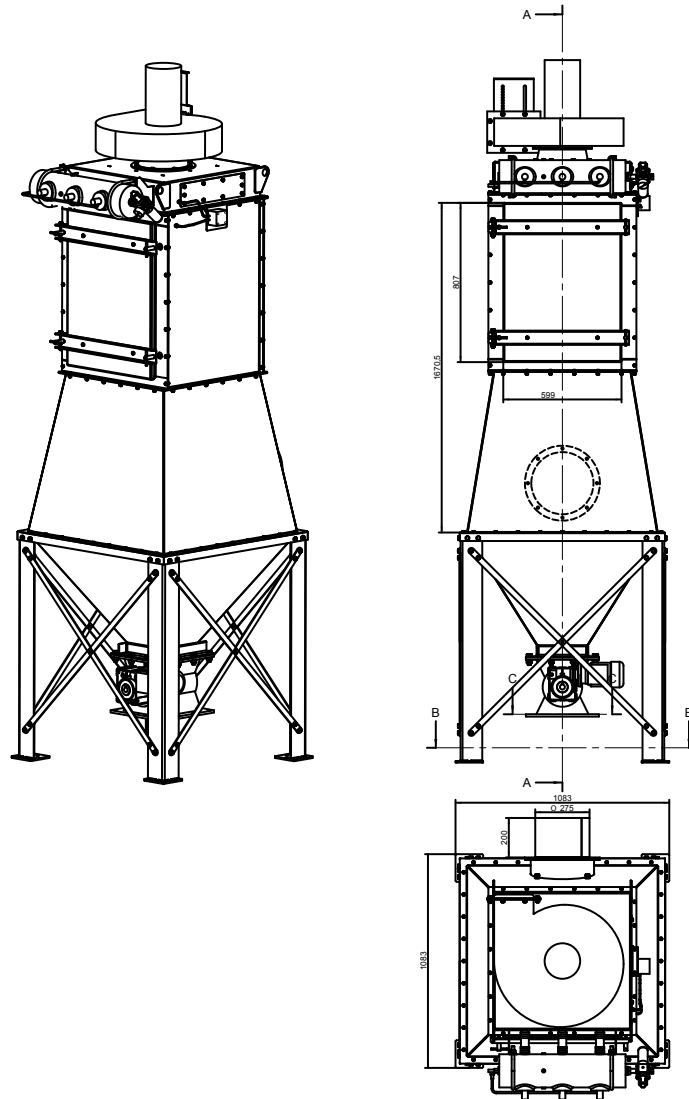
- ATEX, food or chemical industry design
- non-standard temperature design -40 °C / +150 °C
- available also with mechanical filter cartridge recovery

#### BENEFITS

- robust design
- easy filter element replacement
- low dust emission level
- excellent access to every filter component
- perfect recovery of filter element with built-in JET-PULS system



Dust collector P1500/KR5,5 is a box-shaped device. It is used for local filtration - dedusting of storage silos, belt conveyor transfer points, welding operations etc. It is equipped with the support construction, dust hopper and rotary feeder.



## 3. INDUSTRIAL FILTRATION (M-SERIES)

### 3.1. TYPE M1500-1-18

#### DESCRIPTION

- one-box shaped dust collector for local or central filtration
- suitable for various industrial areas with non-stop operation (energy, building industry, foundries, welding, chemical and food industry etc.)

#### OPERATION QUALITIES

- flow rate 3 800 - 5 940 m<sup>3</sup>/h
- filter area 89 m<sup>2</sup>
- residual dust concentration at the output <10 mg/m<sup>3</sup>
- temperature resistance -20 °C / +80 °C
- compressed air needed 6 bar, consumption 6-8 Nm<sup>3</sup>/h
- pressure loss 1500 Pa

#### DESIGN

- 1x filter box made of carbon steel
- damping chamber to reduce the noise from the fan
- filter element: 18x filter cartridge made of polyester in basic design diameter 156 mm, length 1500 mm
- air tank with JET-PULS filter cartridges recovery and timer
- electromagnetic valve (3 pcs), safety valve (1 pc), pressure regulator (1 pc)
- pressure air connection: internal thread G ½"
- pressure switch to indicate the filter cartridges are plugged
- electric control box: 3 x 400 VAC, 50 Hz
- dust hopper with support construction

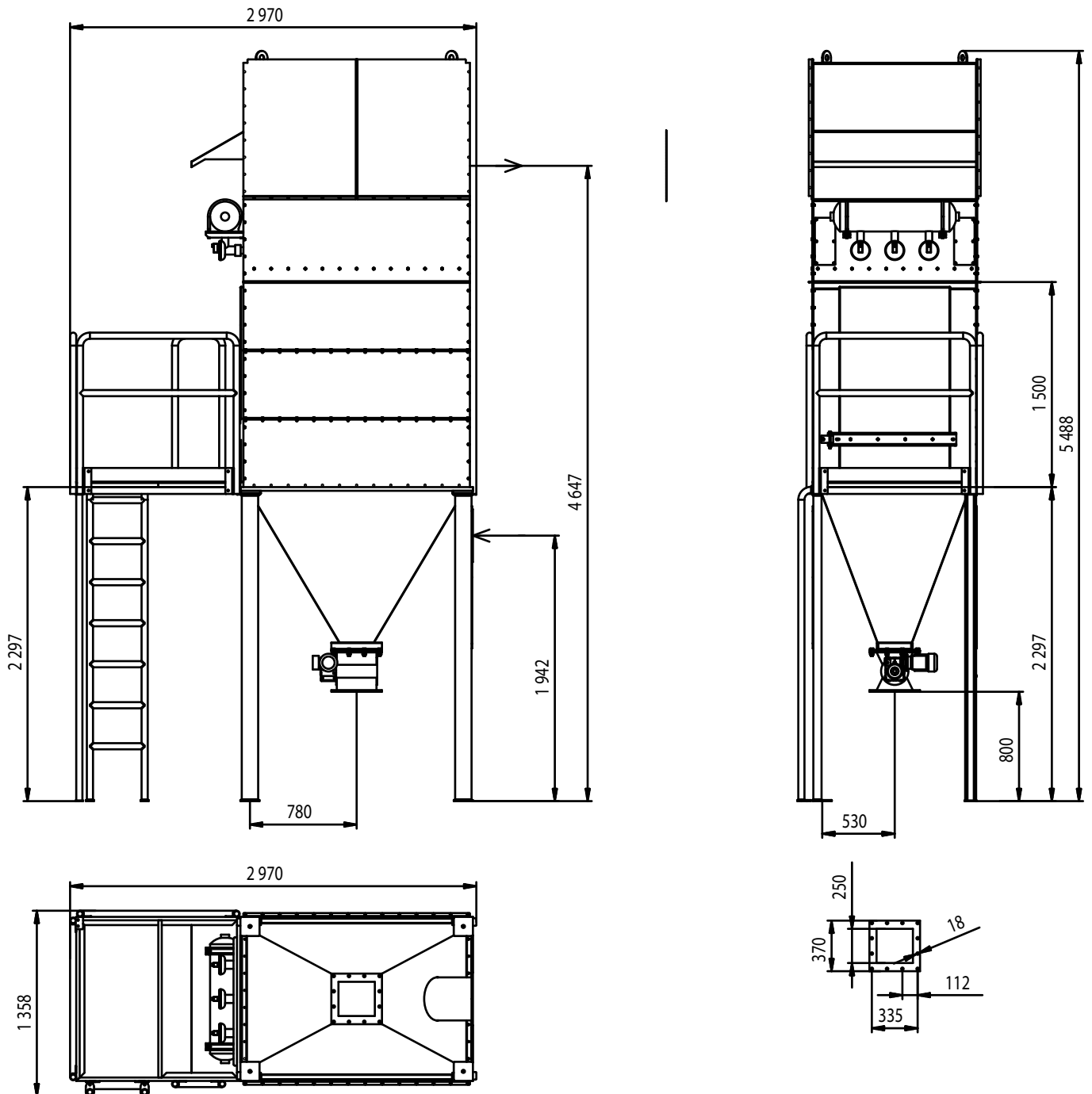
#### ADDITIONAL ACCESSORIES

- rotary feeder or dust collection box
- service platform for easy maintenance
- ATEX, food or chemical industry design
- non-standard temperature design -40 °C / +150 °C

Flow rate (m <sup>3</sup> /h)	Fan (kW)	Fan underpressure (Pa)	Filter surface load (m <sup>3</sup> /m <sup>2</sup> /min)
3 800	5,5	3 950	0,90
3 800-4 800	7,5	3 950	1,12
4 800-5 940	9,2	4 200	1,39



Dust collector M1500-1-18 is a one box-shaped device. It is used for local or central filtration in various industrial areas with non-stop operation. It is equipped with the built-in fan and dust hopper with support construction.



## 3. INDUSTRIAL FILTRATION (M-SERIES)

### 3.2. TYPE M1500-1-24

#### DESCRIPTION

- one-box shaped dust collector for local or central filtration
- suitable for various industrial areas with non-stop operation (energy, building industry, foundries, welding, chemical and food industry etc.)

#### OPERATION QUALITIES

- flow rate 5 100 - 8 240 m<sup>3</sup>/h
- filter area 118 m<sup>2</sup>
- residual dust concentration at the output <10 mg/m<sup>3</sup>
- temperature resistance -20 °C / +80 °C
- compressed air needed 6 bar, consumption 6-8 Nm<sup>3</sup>/h
- pressure loss 1500 Pa

#### DESIGN

- 1x filter box made of carbon steel
- damping chamber to reduce the noise from the fan
- filter element: 24x filter cartridge made of polyester in basic design diameter 156 mm, length 1500 mm
- air tank with JET-PULS filter cartridges recovery and timer
- electromagnetic valve (4 pcs), safety valve (1 pc), pressure regulator (1 pc)
- pressure air connection: internal thread G ½"
- pressure switch to indicate the filter cartridges are plugged
- electric control box: 3 x 400 VAC, 50 Hz
- dust hopper with support construction

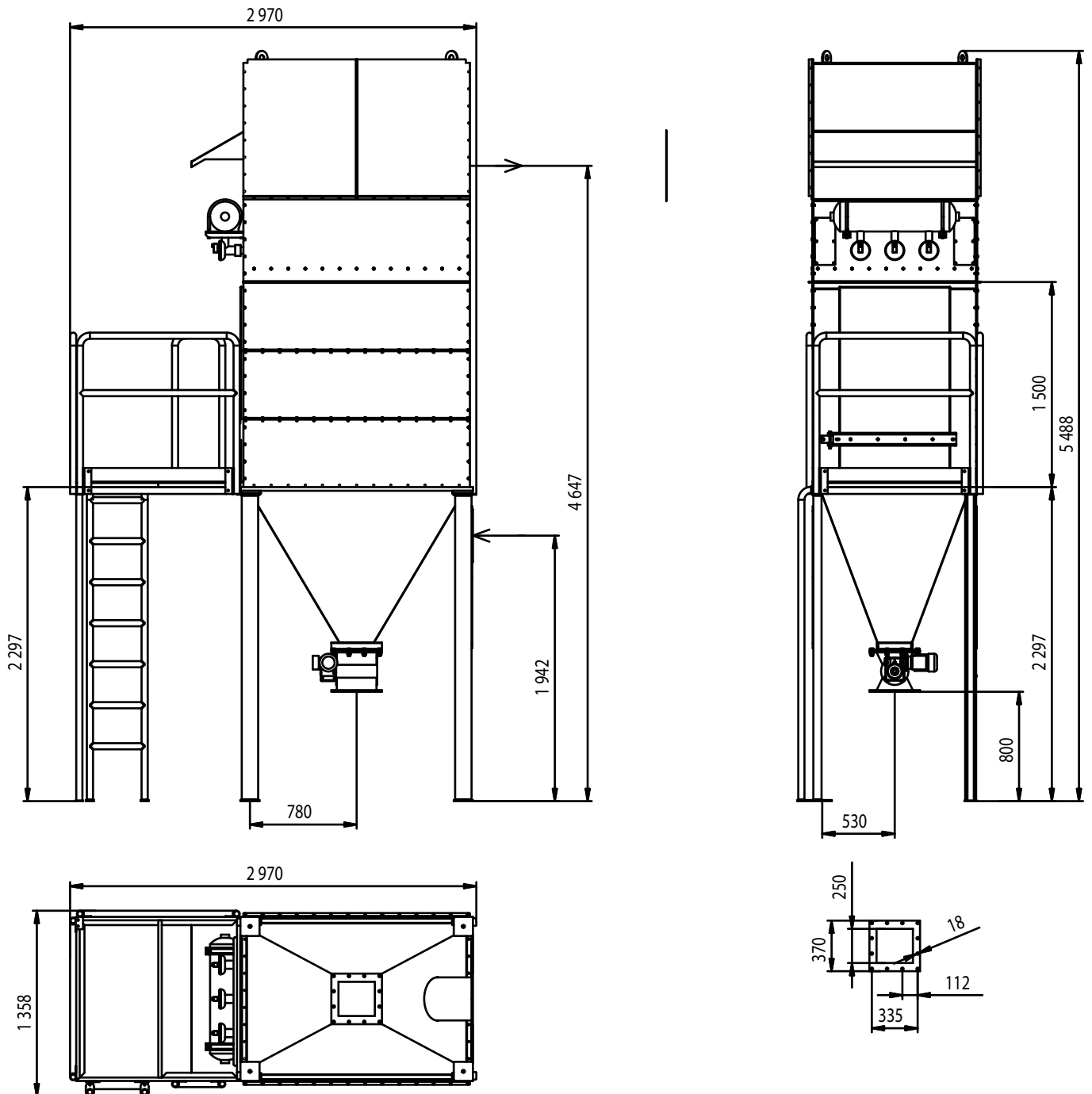
#### ADDITIONAL ACCESSORIES

- rotary feeder or dust collection box
- service platform for easy maintenance
- ATEX, food or chemical industry design
- non-standard temperature design -40 °C / +150 °C

Flow rate (m <sup>3</sup> /h)	Fan (kW)	Fan underpressure (Pa)	Filter surface load (m <sup>3</sup> /m <sup>2</sup> /min)
5 100	11,0	4 100	0,72
5 100-6 000	11,0	4 000	0,85
6 000-6 720	15,0	4 300	0,95
6 720-8 240	15,0	4 150	1,16



Dust collector M1500-1-24 is a one box-shaped device. It is used for local or central filtration in various industrial areas with non-stop operation. It is equipped with the built-in fan and dust hopper with support construction.



## 3. INDUSTRIAL FILTRATION (M-SERIES)

### 3.3. TYPE M2000-1-18

#### DESCRIPTION

- one-box shaped dust collector for local or central filtration
- suitable for various industrial areas with non-stop operation (energy, building industry, foundries, welding, chemical and food industry etc.)

#### OPERATION QUALITIES

- flow rate 6 000 - 8 400 m<sup>3</sup>/h
- filter area 118 m<sup>2</sup>
- residual dust concentration at the output <10 mg/m<sup>3</sup>
- temperature resistance -20 °C / +80 °C
- compressed air needed 6 bar, consumption 6-8 Nm<sup>3</sup>/h
- pressure loss 1500 Pa

#### DESIGN

- 1x filter box made of carbon steel
- damping chamber to reduce the noise from the fan
- filter element: 18x filter cartridge made of polyester in basic design diameter 156 mm, length 2000 mm
- air tank with JET-PULS filter cartridges recovery and timer
- electromagnetic valve(3 pcs), safety valve (1 pc), pressure regulator (1 pc)
- pressure air connection: internal thread G ½"
- pressure switch to indicate the filter cartridges are plugged
- electric control box: 3 x 400 VAC, 50 Hz
- dust hopper with support construction

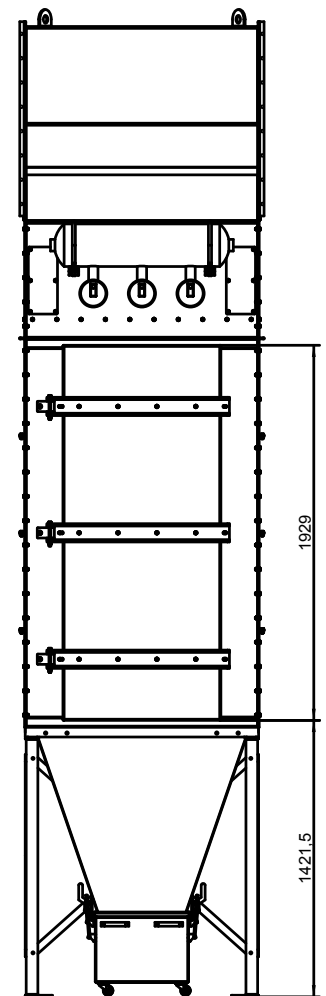
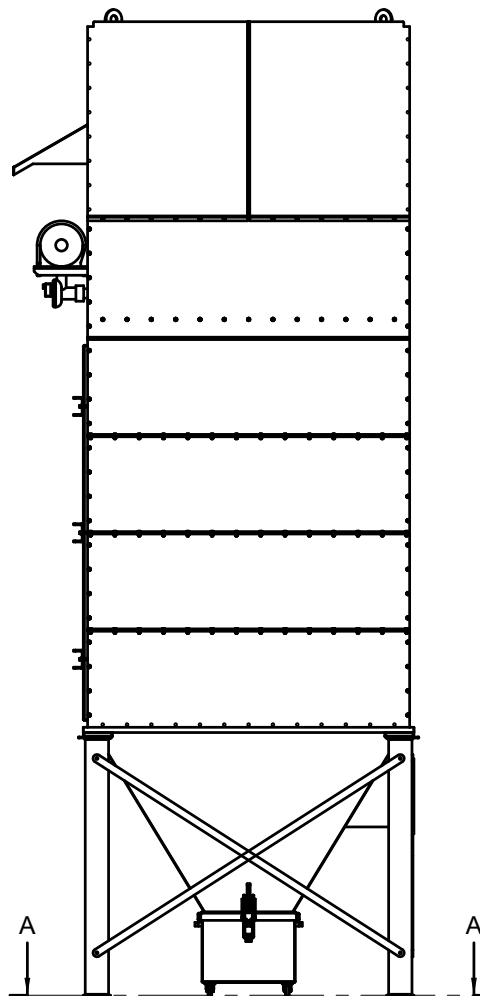
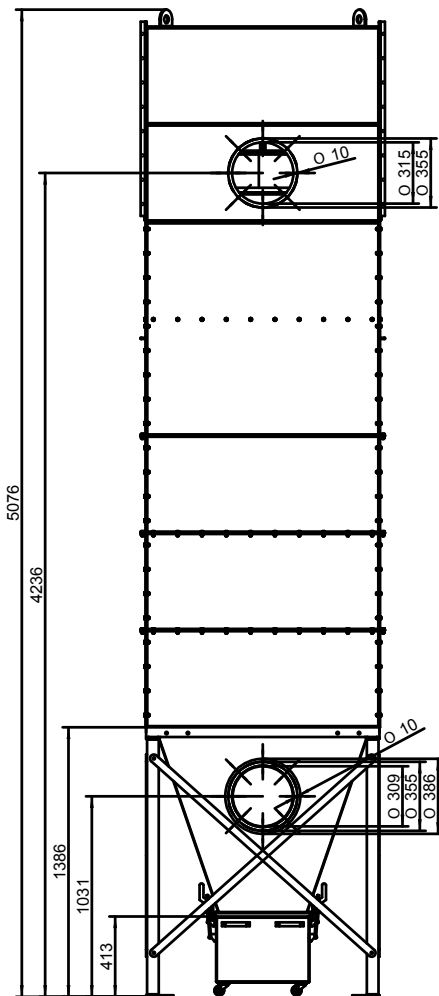
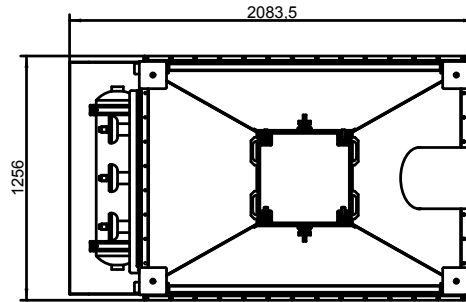
#### ADDITIONAL ACCESSORIES

- rotary feeder or dust collection box
- service platform for easy maintenance
- ATEX, food or chemical industry design
- non-standard temperature design -40 °C / +150 °C

Flow rate (m <sup>3</sup> /h)	Fan (kW)	Fan underpressure (Pa)	Filter surface load (m <sup>3</sup> /m <sup>2</sup> /min)
6 000-7 500	11,0	4000-3750	0,85-1,06
7 500-8 400	15,0	4250-4150	1,06-1,19
7 500-8 400	18,5	4950-4900	1,06-1,19



Dust collector M1500-1-18 is a one box-shaped device. It is used for local or central filtration in various industrial areas with non-stop operation. It is equipped with the built-in fan and dust hopper with support construction.





### 3. INDUSTRIAL FILTRATION (M-SERIES)

#### 3.4. TYPE M2000-1-24

##### DESCRIPTION

- one-box shaped dust collector for local or central filtration
- suitable for various industrial areas with non-stop operation (energy, building industry, foundries, welding, chemical and food industry etc.)

##### OPERATION QUALITIES

- flow rate 6 000 - 12 000 m<sup>3</sup>/h
- filter area 158 m<sup>2</sup>
- residual dust concentration at the output <10 mg/m<sup>3</sup>
- temperature resistance -20 °C / +80 °C
- compressed air needed 6 bar, consumption 6-8 Nm<sup>3</sup>/h
- pressure loss 1500 Pa

##### DESIGN

- 1x filter box made of carbon steel
- damping chamber to reduce the noise from the fan
- filter element: 24x filter cartridge made of polyester in basic design diameter 156 mm, length 2000 mm
- air tank with JET-PULS filter cartridges recovery and timer
- electromagnetic valve(4 pcs), safety valve (1 pc), pressure regulator (1 pc)
- pressure air connection: internal thread G ½"
- pressure switch to indicate the filter cartridges are plugged
- electric control box: 3 x 400 VAC, 50 Hz
- dust hopper with support construction

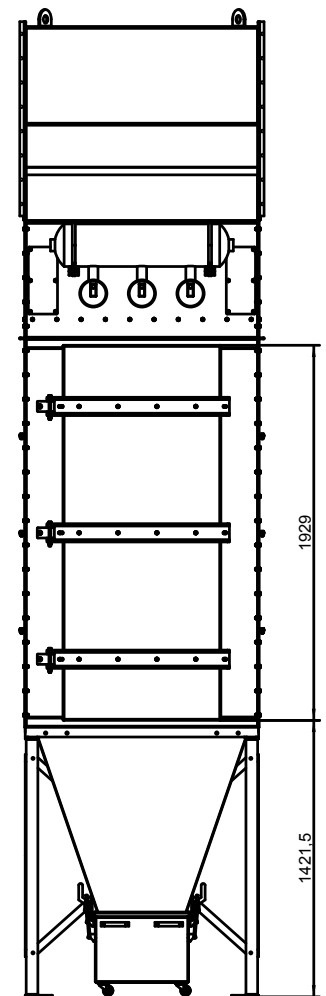
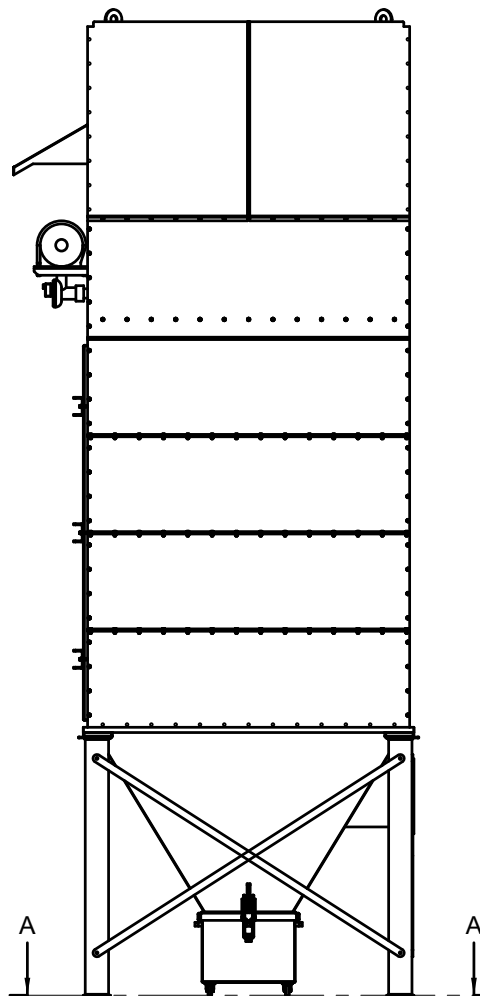
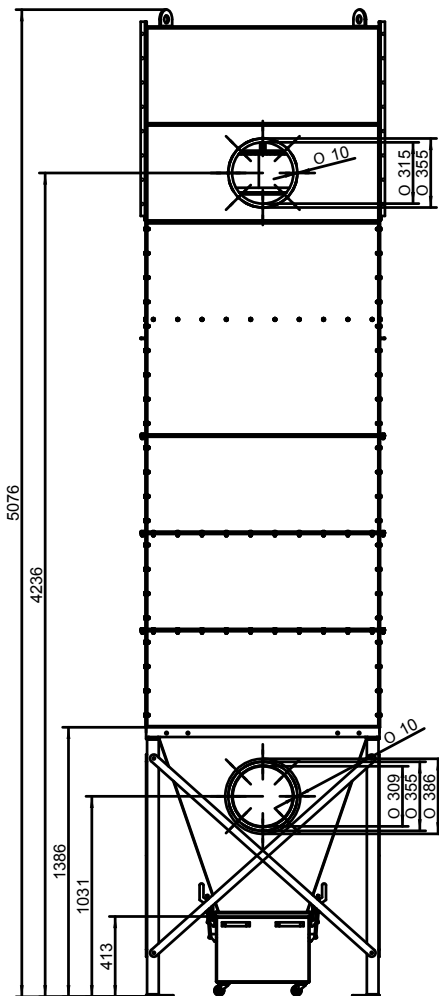
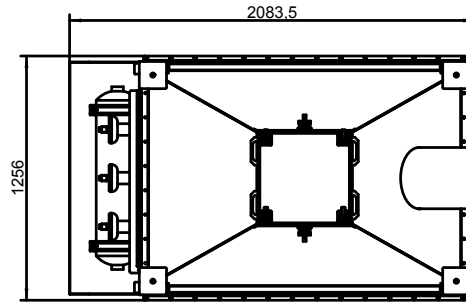
##### ADDITIONAL ACCESSORIES

- rotary feeder or dust collection box
- service platform for easy maintenance
- ATEX, food or chemical industry design
- non-standard temperature design -40 °C / +150 °C

Flow rate (m <sup>3</sup> /h)	Fan (kW)	Fan underpressure (Pa)	Filter surface load (m <sup>3</sup> /m <sup>2</sup> /min)
6 000-7 500	11,0	4 000-3 750	0,63-0,79
7 500-9 600	15,0	4 250-3 950	0,79-1,01
7 500-12 000	18,5	4 950-4 350	0,79-1,26



Dust collector M1500-1-24 is a one box-shaped device. It is used for local or central filtration in various industrial areas with non-stop operation. It is equipped with the built-in fan and dust hopper with support construction.



## 3. INDUSTRIAL FILTRATION (M-SERIES)

### 3.5. TYPE M2000-2-36

#### DESCRIPTION

- two-box shaped dust collector for central filtration
- suitable for various industrial areas with non-stop operation (energy, building industry, foundries, welding, chemical and food industry etc.)

#### OPERATION QUALITIES

- flow rate 10 000 - 15 500 m<sup>3</sup>/h
- filter area 236 m<sup>2</sup>
- residual dust concentration at the output <10 mg/m<sup>3</sup>
- temperature resistance -20 °C / +80 °C
- compressed air needed 6 bar, consumption 8-10 Nm<sup>3</sup>/h
- pressure loss 1500 Pa

#### DESIGN

- 2x filter box made of carbon steel
- standalone fan with vibration joints and dampers
- filter element: 36x filter cartridge made of polyester in basic design diameter 156 mm, length 2000 mm
- air tank with JET-PULS filter cartridges recovery and timer
- electromagnetic valve (6 pcs), safety valve (2 pcs), pressure regulator (2 pcs)
- pressure air connection: internal thread G ½"
- 2x pressure switch to indicate the filter cartridges are plugged
- electric control box: 3 x 400 VAC, 50 Hz
- dust hopper with support construction
- piping to the fan included

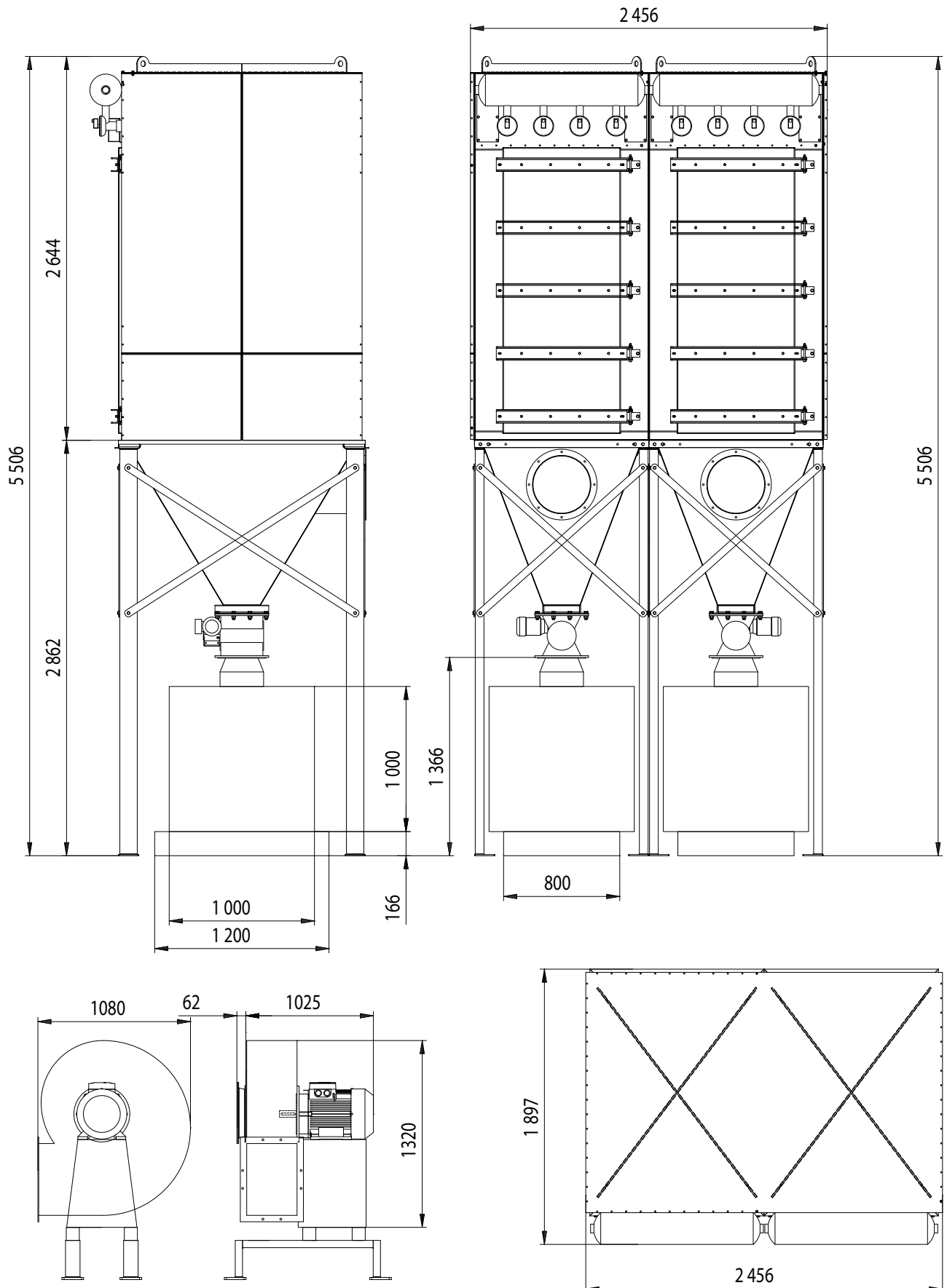
#### ADDITIONAL ACCESSORIES

- rotary feeder or dust collection box
- service platform for easy maintenance
- ATEX, food or chemical industry design
- non-standard temperature design -40 °C / +150 °C

Flow rate (m <sup>3</sup> /h)	Fan (kW)	Fan underpressure (Pa)	Filter surface load (m <sup>3</sup> /m <sup>2</sup> /min)
10 000	15,0	3 700	0,71
10 000-12 500	18,5	4 100	0,88
12 500-15 500	22,0	4 000	1,10



Dust collector M2000-2-36 is a two box-shaped device. It is used for central filtration in various industrial areas with non-stop operation. It is equipped with the standalone fan and dust hoppers with support construction.



## 3. INDUSTRIAL FILTRATION (M-SERIES)

### 3.6. TYPE M2000-1-24

#### DESCRIPTION

- one-box shaped dust collector for local or central filtration
- suitable for various industrial areas with non-stop operation (energy, building industry, foundries, welding, chemical and food industry etc.)

#### OPERATION QUALITIES

- flow rate 16 600 m<sup>3</sup>/h
- filter area 158 m<sup>2</sup>
- fan 37 kW
- residual dust concentration at the output <10 mg/m<sup>3</sup>
- temperature resistance -20 °C / +80 °C
- compressed air needed 6 bar, consumption 8-12 Nm<sup>3</sup>/h
- pressure loss 2000 Pa

#### DESIGN

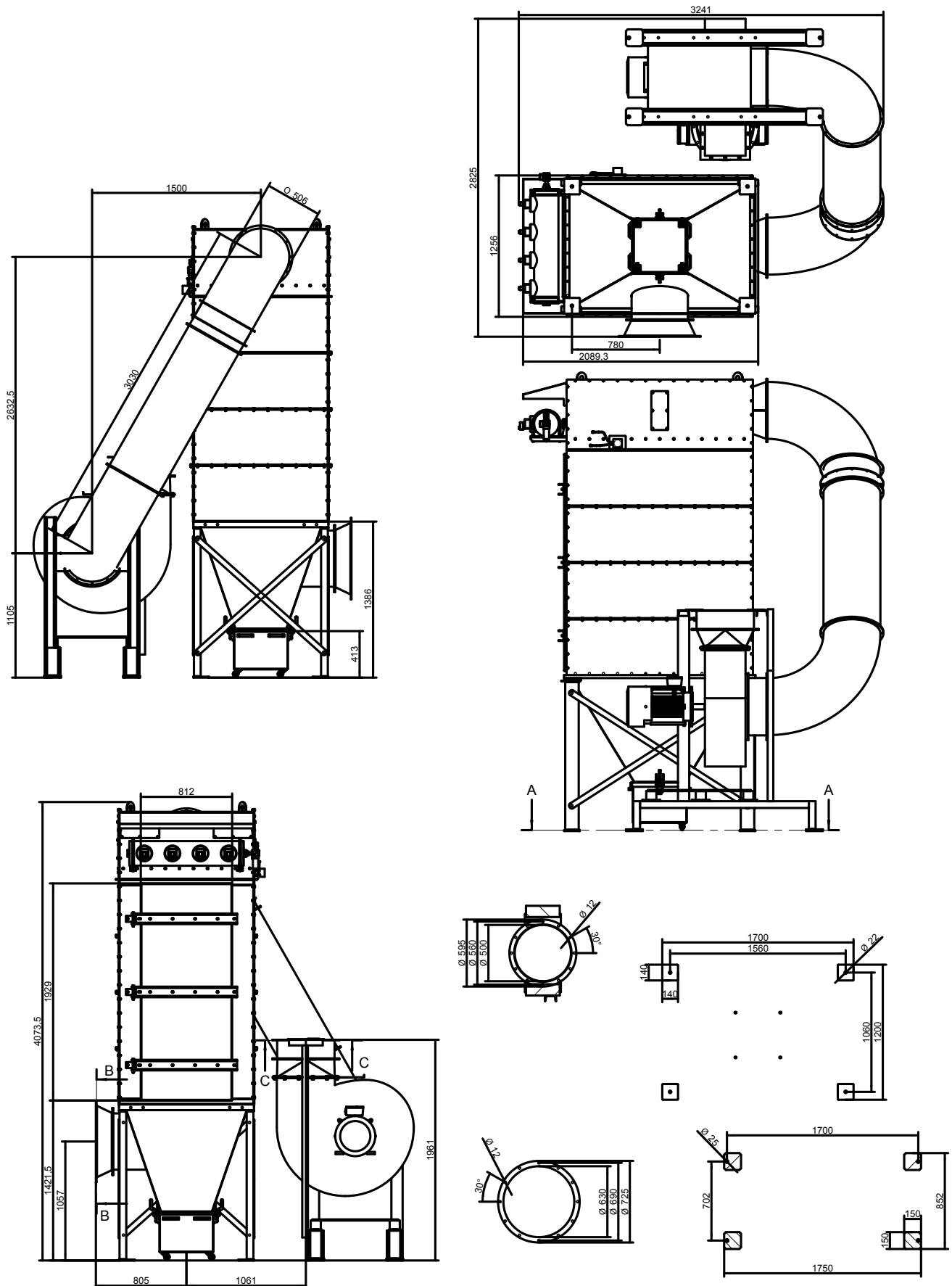
- 1x filter box made of carbon steel
- standalone fan with vibration joints and dampers
- filter element: 24x filter cartridge made of polyester in basic design diameter 156 mm, length 2000 mm
- air tank with JET-PULS filter cartridges recovery and timer
- electromagnetic valve (4 pcs), safety valve (1 pc), pressure regulator (1 pc)
- pressure air connection: internal thread G ½"
- pressure switch to indicate the filter cartridges are plugged
- electric control box: 3 x 400 VAC, 50 Hz
- dust hopper with support construction
- dust collection box
- piping to the fan included

#### ADDITIONAL ACCESSORIES

- service platform for easy maintenance
- ATEX, food or chemical industry design
- non-standard temperature design -40 °C / +150 °C



Dust collector M2000-1-24 is a one box-shaped device. It is used for local or central filtration in various industrial areas with non-stop operation. It is equipped with the standalone 37 kW fan, hopper with support construction and dust collection box.



## 3. INDUSTRIAL FILTRATION (M-SERIES)

### 3.7. TYPE M2000-2-48

#### DESCRIPTION

- two-box shaped dust collector for central filtration
- suitable for various industrial areas with non-stop operation (energy, building industry, foundries, welding, chemical and food industry etc.)

#### OPERATION QUALITIES

- flow rate 13 500 - 21 000 m<sup>3</sup>/h
- filter area 316 m<sup>2</sup>
- residual dust concentration at the output <10 mg/m<sup>3</sup>
- temperature resistance -20 °C / +80 °C
- compressed air needed 6 bar, consumption 8-10 Nm<sup>3</sup>/h
- pressure loss 1500 Pa

#### DESIGN

- 2x filter box made of carbon steel
- standalone fan with vibration joints and dampers
- filter element: 48x filter cartridge made of polyester in basic design diameter 156 mm, length 2000 mm
- air tank with JET-PULS filter cartridges recovery and timer
- electromagnetic valve (8 pcs), safety valve (2 pcs), pressure regulator (2 pcs)
- pressure air connection: internal thread G ½"
- 2x pressure switch to indicate the filter cartridges are plugged
- electric control box: 3 x 400 VAC, 50 Hz
- dust hopper with support construction
- piping to the fan included

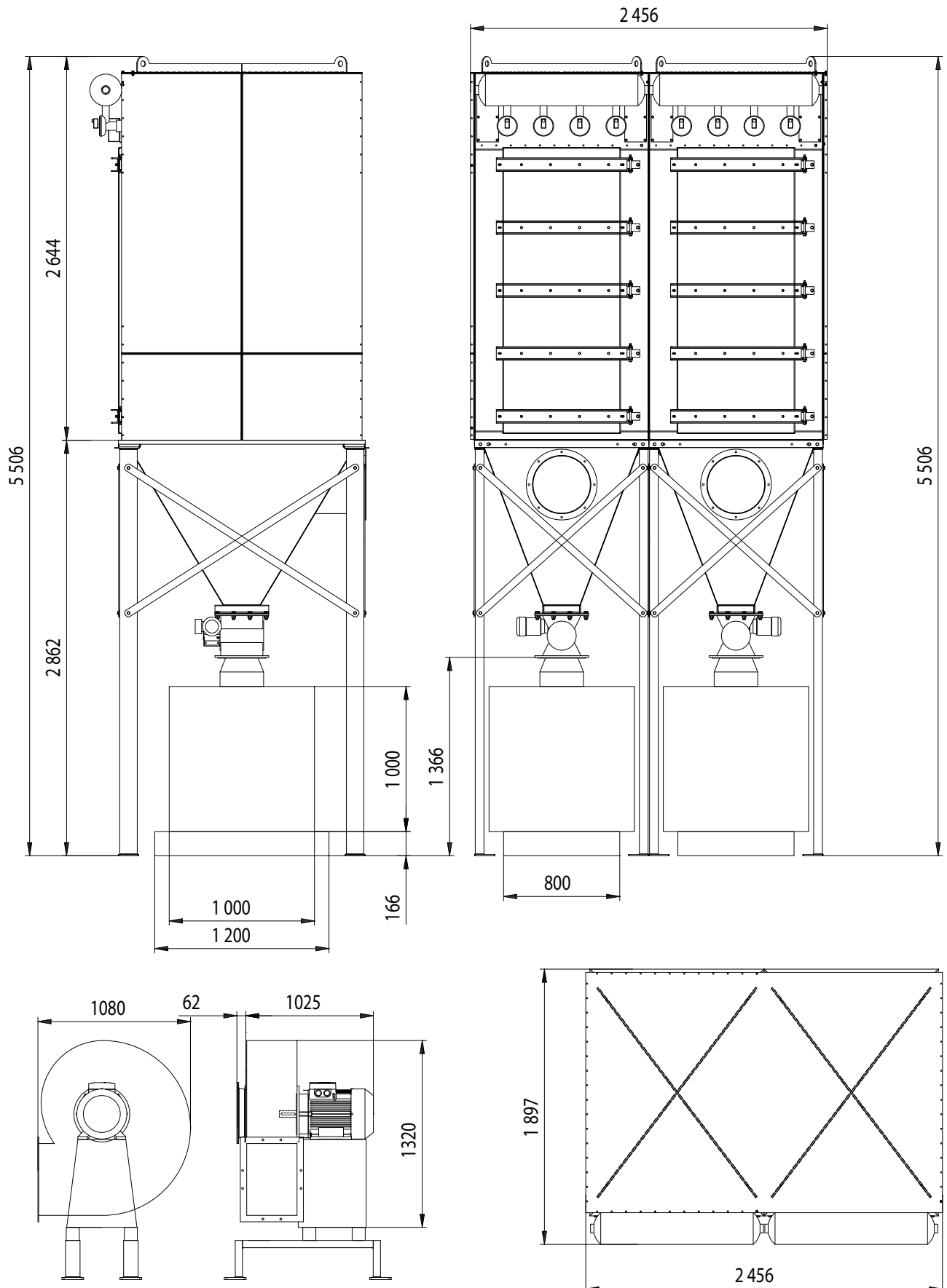
#### ADDITIONAL ACCESSORIES

- rotary feeder or dust collection box
- service platform for easy maintenance
- ATEX, food or chemical industry design
- non-standard temperature design -40 °C / +150 °C

Flow rate (m <sup>3</sup> /h)	Fan (kW)	Fan underpressure (Pa)	Filter surface load (m <sup>3</sup> /m <sup>2</sup> /min)
13 500	18,5	3 900	0,71
13 500-17 000	30,0	4 600	0,90
17 000-21 000	37,0	4 600	1,10



Dust collector M2000-2-48 is a two box-shaped device. It is used for central filtration in various industrial areas with non-stop operation. It is equipped with the standalone fan and dust hoppers with support construction.





## 3. INDUSTRIAL FILTRATION (M-SERIES)

### 3.8. TYPE M2000-3-54

#### DESCRIPTION

- three-box shaped dust collector for central filtration
- suitable for various industrial areas with non-stop operation (energy, building industry, foundries, welding, chemical and food industry etc.)

#### OPERATION QUALITIES

- flow rate 15 000 - 23 500 m<sup>3</sup>/h
- filter area 354 m<sup>2</sup>
- residual dust concentration at the output <10 mg/m<sup>3</sup>
- temperature resistance -20 °C / +80 °C
- compressed air needed 6 bar, consumption 10-12 Nm<sup>3</sup>/h
- pressure loss 1500 Pa

#### DESIGN

- 3x filter box made of carbon steel
- standalone fan with vibration joints and dampers
- filter element: 54x filter cartridge made of polyester in basic design diameter 156 mm, length 2000 mm
- air tank with JET-PULS filter cartridges recovery and timer
- electromagnetic valve (9 pcs), safety valve (3 pcs), pressure regulator (3 pcs)
- pressure air connection: internal thread G ½"
- 3x pressure switch to indicate the filter cartridges are plugged
- electric control box: 3 x 400 VAC, 50 Hz
- dust hopper with support construction
- piping to the fan included

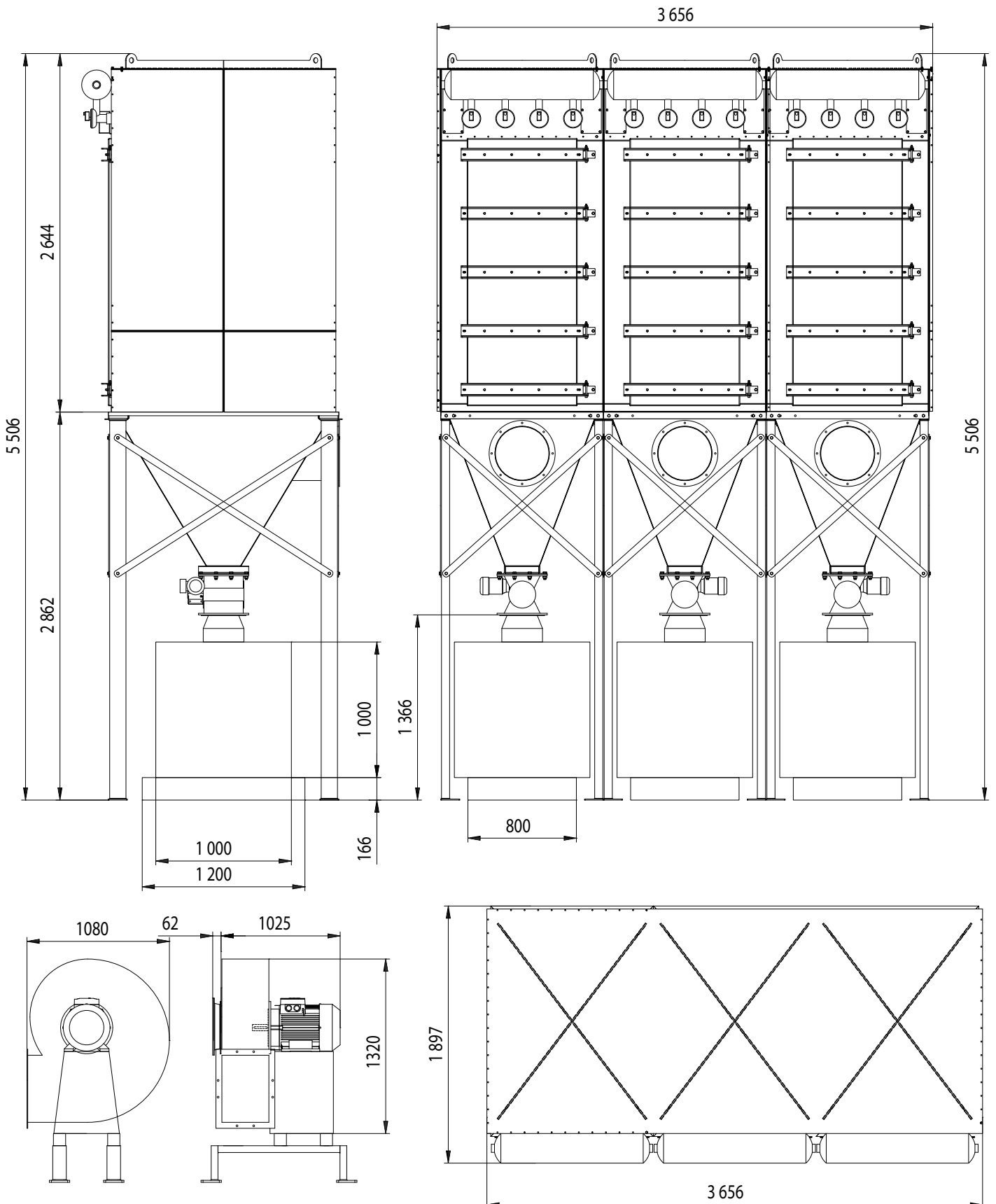
#### ADDITIONAL ACCESSORIES

- rotary feeder or dust collection box
- service platform for easy maintenance
- ATEX, food or chemical industry design
- non-standard temperature design -40 °C / +150 °C

Flow rate (m <sup>3</sup> /h)	Fan (kW)	Fan underpressure (Pa)	Filter surface load (m <sup>3</sup> /m <sup>2</sup> /min)
15 000	22,0	3 900	0,71
15 000-20 000	30,0	3 700	0,94
20 000-23 500	37,0	4 000	1,10



Dust collector M2000-3-54 is a three box-shaped device. It is used for central filtration in various industrial areas with non-stop operation. It is equipped with the standalone fan and dust hoppers with support construction.



## 3. INDUSTRIAL FILTRATION (M-SERIES)

### 3.9. TYPE M2000-3-72

#### DESCRIPTION

- three-box shaped dust collector for central filtration
- suitable for various industrial areas with non-stop operation (energy, building industry, foundries, welding, chemical and food industry etc.)

#### OPERATION QUALITIES

- flow rate 20 000 - 31 500 m<sup>3</sup>/h
- filter area 474 m<sup>2</sup>
- residual dust concentration at the output <10 mg/m<sup>3</sup>
- temperature resistance -20 °C / +80 °C
- compressed air needed 6 bar, consumption 10-12 Nm<sup>3</sup>/h
- pressure loss 1500 Pa

#### DESIGN

- 3x filter box made of carbon steel
- standalone fan with vibration joints and dampers
- filter element: 72x filter cartridge made of polyester in basic design diameter 156 mm, length 2000 mm
- air tank with JET-PULS filter cartridges recovery and timer
- electromagnetic valve (12 pcs), safety valve (3 pcs), pressure regulator (3 pcs)
- pressure air connection: internal thread G ½"
- 3x pressure switch to indicate the filter cartridges are plugged
- electric control box: 3 x 400 VAC, 50 Hz
- dust hopper with support construction
- piping to the fan included

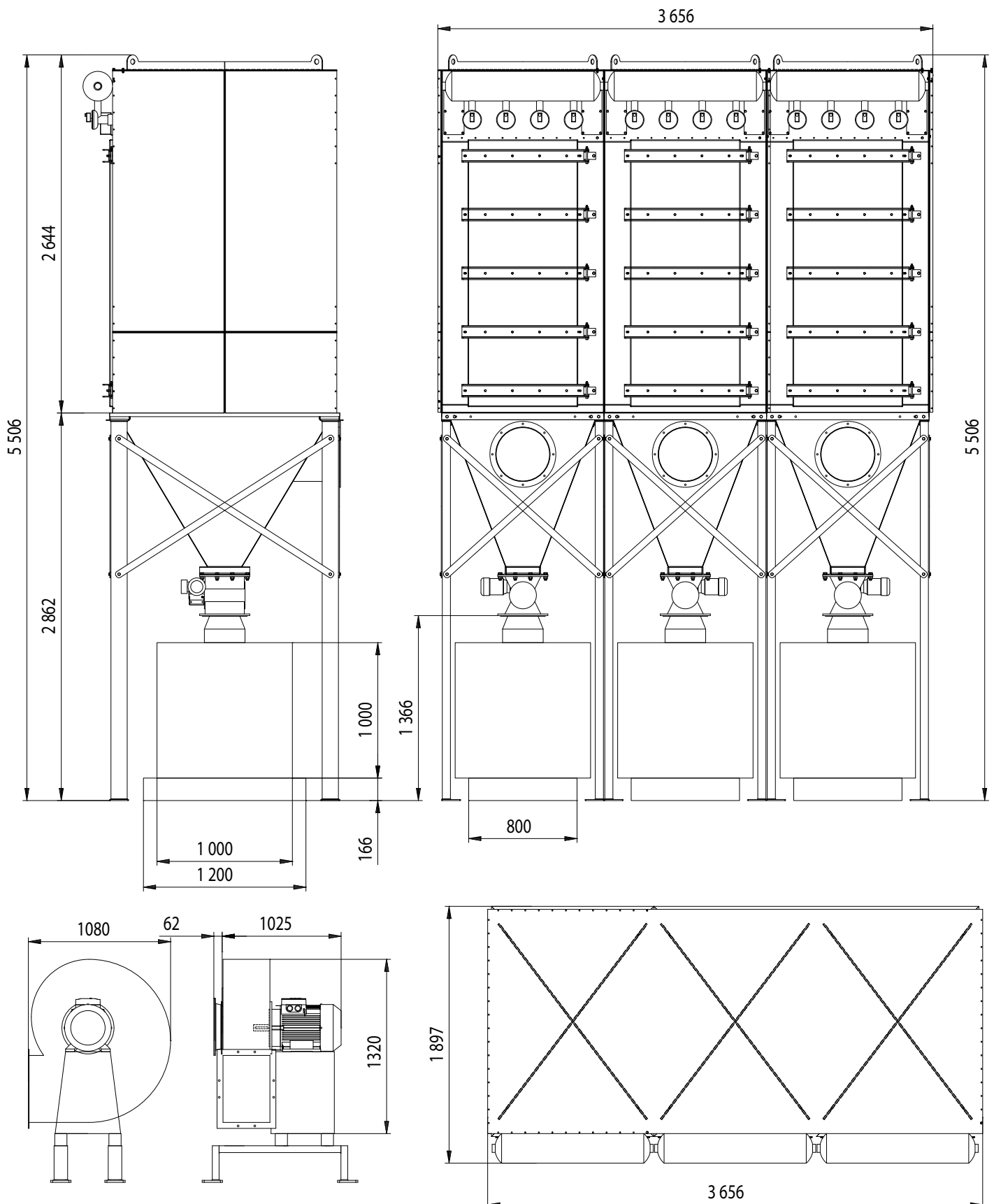
#### ADDITIONAL ACCESSORIES

- rotary feeder or dust collection box
- service platform for easy maintenance
- ATEX, food or chemical industry design
- non-standard temperature design -40 °C / +150 °C

Flow rate (m <sup>3</sup> /h)	Fan (kW)	Fan underpressure (Pa)	Filter surface load (m <sup>3</sup> /m <sup>2</sup> /min)
20 000	37,0	4 500	0,70
20 000-26 000	45,0	4 500	0,91
26 000-31 500	55,0	4 600	1,10



Dust collector M2000-3-72 is a three box-shaped device. It is used for central filtration in various industrial areas with non-stop operation. It is equipped with the standalone fan and dust hoppers with support construction.



## 3. INDUSTRIAL FILTRATION (M-SERIES)

### 3.10. TYPE M2000-4-72

#### DESCRIPTION

- four-box shaped dust collector for central filtration
- suitable for various industrial areas with non-stop operation (energy, building industry, foundries, welding, chemical and food industry etc.)

#### OPERATION QUALITIES

- flow rate 20 000 - 31 500 m<sup>3</sup>/h
- filter area 474 m<sup>2</sup>
- residual dust concentration at the output <10 mg/m<sup>3</sup>
- temperature resistance -20 °C / +80 °C
- compressed air needed 6 bar, consumption 14-16 Nm<sup>3</sup>/h
- pressure loss 1500 Pa

#### DESIGN

- 4x filter box made of carbon steel
- standalone fan with vibration joints and dampers
- filter element: 72x filter cartridge made of polyester in basic design diameter 156 mm, length 2000 mm
- air tank with JET-PULS filter cartridges recovery and timer
- electromagnetic valve (12 pcs), safety valve (4 pcs), pressure regulator (4 pcs)
- pressure air connection: internal thread G ½"
- 4x pressure switch to indicate the filter cartridges are plugged
- electric control box: 3 x 400 VAC, 50 Hz
- dust hopper with support construction
- piping to the fan included

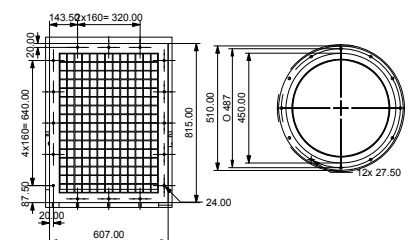
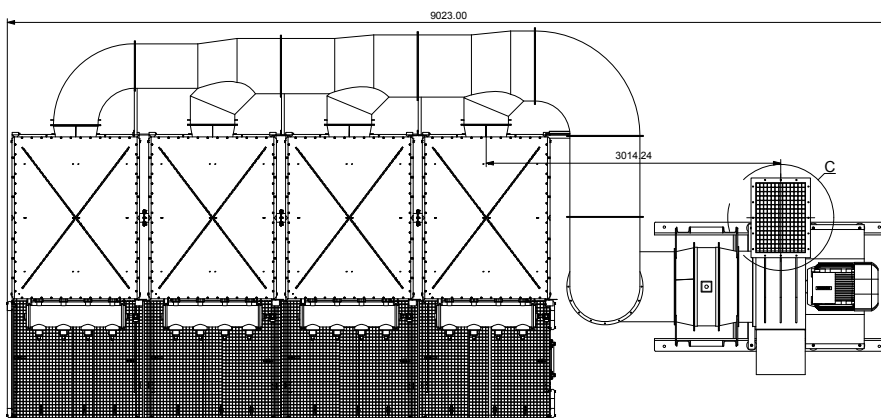
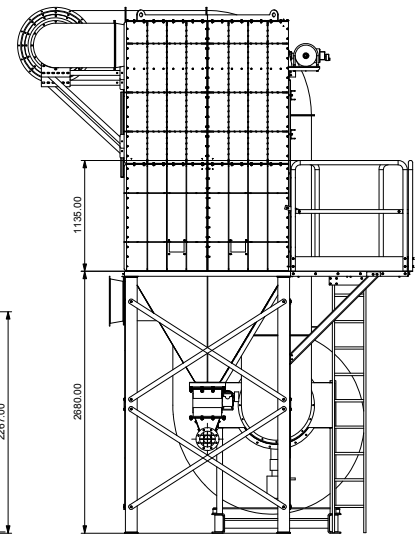
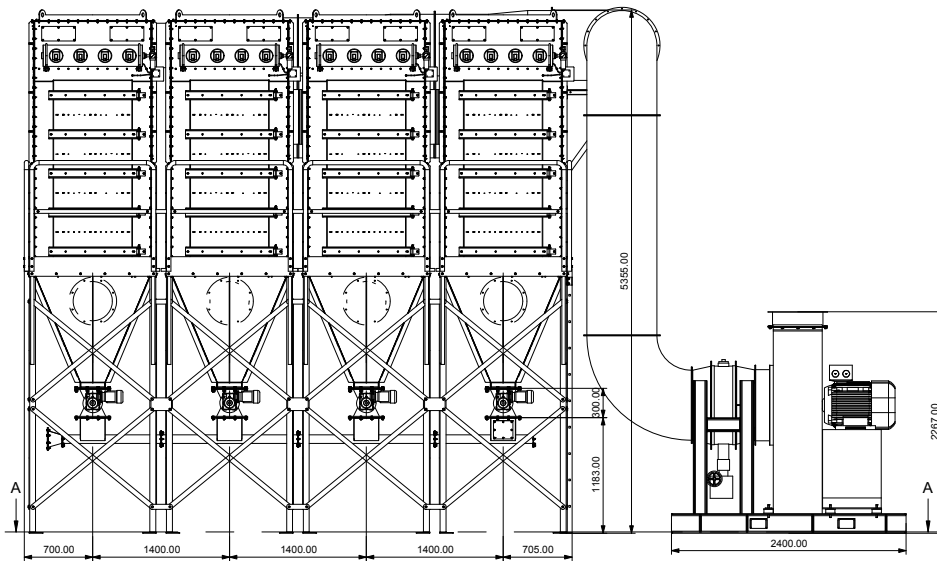
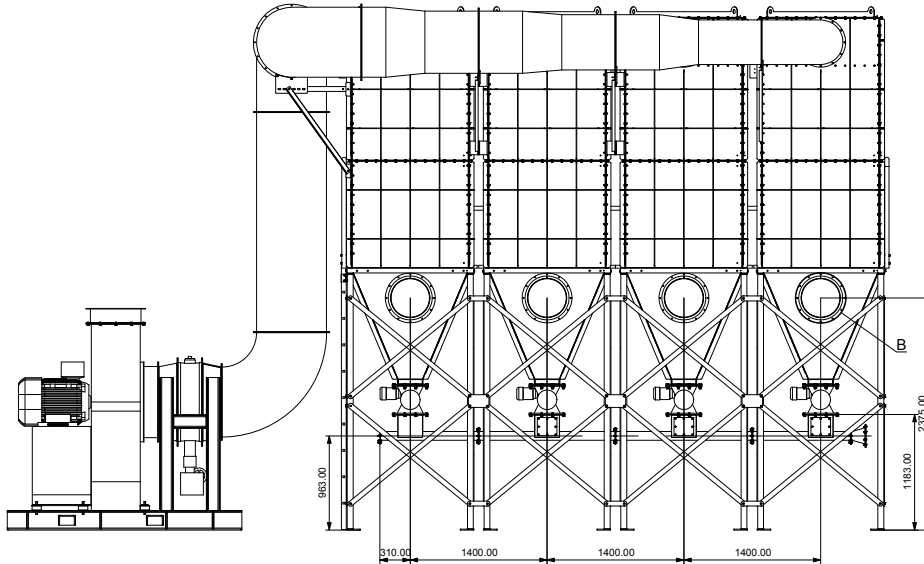
#### ADDITIONAL ACCESSORIES

- rotary feeder or dust collection box
- service platform for easy maintenance
- ATEX, food or chemical industry design
- non-standard temperature design -40 °C / +150 °C

Flow rate (m <sup>3</sup> /h)	Fan (kW)	Fan underpressure (Pa)	Filter surface load (m <sup>3</sup> /m <sup>2</sup> /min)
20 000	37,0	4 500	0,71
20 000-26 000	45,0	4 500	0,91
26 000-31 500	55,0	4 600	1,10



Dust collector M2000-4-72 is a four box-shaped device. It is used for central filtration in various industrial areas with non-stop operation. It is equipped with the standalone fan and dust hoppers with support construction.



## 3. INDUSTRIAL FILTRATION (M-SERIES)

### 3.11. TYPE M2000-4-96

#### DESCRIPTION

- four-box shaped dust collector for central filtration
- suitable for various industrial areas with non-stop operation (energy, building industry, foundries, welding, chemical and food industry etc.)

#### OPERATION QUALITIES

- flow rate 27 000 - 42 000 m<sup>3</sup>/h
- filter area 632 m<sup>2</sup>
- residual dust concentration at the output <10 mg/m<sup>3</sup>
- temperature resistance -20 °C / +80 °C
- compressed air needed 6 bar, consumption 14-16 Nm<sup>3</sup>/h
- pressure loss 1500 Pa

#### DESIGN

- 4x filter box made of carbon steel
- standalone fan with vibration joints and dampers
- filter element: 96x filter cartridge made of polyester in basic design diameter 156 mm, length 2000 mm
- air tank with JET-PULS filter cartridges recovery and timer
- electromagnetic valve (16 pcs), safety valve (4 pcs), pressure regulator (4 pcs)
- pressure air connection: internal thread G ½"
- 4x pressure switch to indicate the filter cartridges are plugged
- electric control box: 3 x 400 VAC, 50 Hz
- dust hopper with support construction
- piping to the fan included

#### ADDITIONAL ACCESSORIES

- rotary feeder or dust collection box
- service platform for easy maintenance
- ATEX, food or chemical industry design
- non-standard temperature design -40 °C / +150 °C

Flow rate (m <sup>3</sup> /h)	Fan (kW)	Fan underpressure (Pa)	Filter surface load (m <sup>3</sup> /m <sup>2</sup> /min)
27 000	45,0	4 200	0,70
27 000-34 000	55,0	3 600	0,90
34 000-42 000	75,0	3 600	1,10



Dust collector M2000-4-96 is a four box-shaped device. It is used for central filtration in various industrial areas with non-stop operation. It is equipped with the standalone fan and dust hoppers with support construction.

