

DYNATEK User List - Confidential - 12/1/12

Company Name	City	State
Cherokee Nitrogen	Cherokee	AL
Ellison Milling	Lethbridge	Alberta
Criterion Catalyst & Technologies	Azusa	CA
General Mills Inc	Lodi	CA
Specialty Granules Inc	Ione	CA
Maxwell House Coffee Co	Jacksonville	FL
SWGE / First United Ethanol	Pelham	GA
Pannonia Ethanol	Dunafoldvar	Hungary
Absolute Energy LLC	Saint Ansgar	IA
Big River United Energy LLC	Dyersville	IA
Corn LP	Goldfield	IA
Flint Hills Resources	Fairbank	IA
Flint Hills Resources	Shell Rock	IA
Flint Hills Resources	Menlo	IA
Gencor-Bituma Industries Inc	Marquette	IA
Green Plains Renewable Energy	Shenandoah	IA
Homeland Energy Solutions LLC	Lawler	IA
Louis Dreyfus Commodities LLC	Grand Junction	IA
Platinum Ethanol LLC	Arthur	IA
US Gypsum Co	Fort Dodge	IA
Valero Renewable Fuels Co	Albert City	IA
US Ecology Idaho Inc	Grand View	ID
ADM Corn Processing	Decatur	IL
Amoco Chemical Company	Joliet	IL
Aventine Renewable Energy Inc	Canton	IL
Aventine Renewable Energy Inc	Pekin	IL
Big River Resources LLC	Galva	IL
Flint Hills Resources LP	Channahon	IL
Flint Hills Resources LP Joliet	Joliet	IL
Illinois River Energy LLC	Rochelle	IL
International Malting Co, - ADM Malting Division	Chicago	IL
JM Huber	Quincy	IL
Marquis Energy, LLC - Hennepin	Hennepin	IL
One Earth Energy LLC	Gibson City	IL
Patriot Renewable Fuels LLC	Annawan	IL
Cardinal Ethanol LLC	Union City	IN
Central Indiana Ethanol LLC	Marion	IN
Green Plains Renewable Energy	Bluffton	IN
Iroquois Bio-Energy LLC	Rensselaer	IN
Valero Renewables	Linden	IN
Columbian Chemicals	Ulysses	KS
Ingredion (was National Starch & Chemical Co)	North Kansas City	KS
Air Products & Chemicals	Calvert City	KY
Carbide Industries LLC	Louisville	KY
Corhart Refractories	Louisville	KY
Dupont Soy Polymers	Louisville	KY
Reed (Harsco) Minerals	Drakesboro	KY
Cargill Incorp - Salt Div	Breaux Bridge	LA

DYNATEK User List - Confidential - 12/1/12

Company Name	City	State
Criterion Catalyst & Technologies	Port Allen	LA
Carbonatos de Calcio Cadereyta, SA de CV	Quereyta	Mexico
BASF Corp	Wyandotte	MI
Carbon Green BioEnergy LLC	Lake Odessa	MI
DCP Midstream	Marysville	MI
Marysville Ethanol LLC	Marysville	MI
Nugent Sand	Muskegan	MI
Bay State Milling Co	Winona	MN
Bushmills Ethanol Inc	Atwater	MN
Cenex Harvest States - CHS	Mankato	MN
Gavilon Grain	St Paul	MN
Granite Falls Energy LLC	Granite Falls	MN
Guardian Energy	Janesville	MN
Guardian Energy	Winthrop	MN
Heron Lake BioEnergy LLC	Heron Lake	MN
LaFarge North America	Eagan	MN
Potash Corp/PCS Phosphates	Aurora	NC
Blue Flint Ethanol LLC	Underwood	ND
Hankinson Renewable Energy	Hankinson	ND
Red Trail Energy LLC	Richardton	ND
Advanced BioEnergy LLC	Fairmont	NE
E Energy Adams LLC	Adams	NE
Green Plains Renewable Energy Inc	Ord	NE
Louis Dreyfus Commodities	Norfolk	NE
Nucor Bar Mill Group	Norfolk	NE
Siouxland Ethanol	Jackson	NE
Valero Renewable Fuels Co	Albion	NE
US Silica Co Inc	Newport	NJ
CWM Chemical Services	Model City	NY
Western New York Energy LLC	Medina	NY
Delphi Chassis Systems	Dayton	OH
Guardian Lima LLC	Lima	OH
Kraft Foods	Toledo	OH
Ralston Foods	Lancaster	OH
Valero Renewable Fuels Co - Bloomingburg	Bloomingburg	OH
Ingredion (Formerly Casco Inc)	London	ON
Pennsylvania Grain Processing LLC	Clearfield	PA
Glacial Lakes Energy LLC	Mina	SD
NuGen Energy LLC	Marion	SD
Redfield Energy LLC	Redfield	SD
Dupont Titanium Technologies	New Johnsonville	TN
Green Plains Renewable Energy Inc	Rives	TN
Kinder Morgan Inc	New Johnsonville	TN
Nucor Bar Mill Group Memphis	Memphis	TN
Akzo Nobel Polymer Chemicals	Pasadena	TX
Cadeco Industries / Maximus Coffee LLC	Houston	TX
Uncle Ben's Inc	Houston	TX
Cargill Meat Solutions	Friona	TX

DYNATEK User List - Confidential - 12/1/12

Company Name	City	State
Exide Technologies	Frisco	TX
Exxon Mobile Corp	Mont Belvieu	TX
Momentive Specialty Chemicals	Brady	TX
Occidental Chemical Corporation	Dallas	TX
Virginia Poultry Growers Coop Inc	Hinton	VA
Omya Inc	Florence	VT
Big River Resources Boyceville LLC	Boyceville	WI
Marquis Energy	Necedah	WI
United Ethanol LLC	Milton	WI
US Silica Co Inc	Berkeley Springs	WV
Simplot Phosphates LLC	Rock Springs	WY
<i>Note: Many of the listed companies have more than one loader installed</i>		

Loader Applications Summary

5/1/12 GRK

#	Material	Bulk Density	Loading Rate	Loader Type	Vehicle	Industry
1	Activated Carbon	20 #/ft3	12,000 ft3/hr	Air Slide - 18"	Trucks	Chemical
2	Alumina	70 #/ft3	42 TPH	Air Slide - 6"	Rail Car	Mining
3	Aluminum Catalyst Fines	45-55 #/ft3	50 TPH	Air Slide - 10"	Trucks	Chemical
4	Ammonium Nitrate Prills	38 #/ft3	250 TPH	Belt - 24"	Trucks & Rail Cars	Fertilizer
5	Barley	40 #/ft3		Screw - 14"	Rail Cars	Grain
6	Calcined Lime	60 #/ft3	500 TPH	Belt - 30"	Rail Cars	Mineral
7	Calcium Carbide	80 #/ft3		Screw	Rail Cars	Chemical
8	Calcium Carbonate	44 #/ft3	200 TPH	Belt - 36"	Trucks	Mineral
9	Carbon Black	35 #/ft3		Belt - 24"	Trucks	Chemical
10	Cellulose Fiber	29.5 #/ft3	25 TPH	Screw - 18"	Trucks	Food
11	Coffee	35 #/ft3		Screw -	Trucks & Rail Cars	Food
12	Compost	35 - 45 #/ft3	13,600 ft3/hr	Belt - 54"	Trucks	Compost
13	Corn	34 #/ft3	15,000 BPH	Drag - 21" X 26"	Trucks & Rail Cars	Grain
14	Whole Grain Corn, Wheat & Barley	38-38 #/ft3	25,000 ft3/hr	Drag - 25" X 26"	Barges	Grain
16	DDGS	34 #/ft3	25,000 ft3/hr	Drag - 24" X 26"	Trucks & Rail Cars	Ethanol
17	DDG Flour	37-40 #/ ft3	375 TPH	Air Slide - 20"	Trucks	Ethanol
19	Flax Shive Mids	35 #/ft3	350 ft3/hr	Screw - 9"	Trucks	Grain
20	Flux Materials	60 #/ft3	125 TPH	Belt - 24"	Steel Scrap Ladle	Steel
21	Fly Ash	40-45 #/ft3	180-215 TPH	Air Slide	Barges	Power
22	Grain (dry,spent)	35 #/ft3	1770 ft3/hr	Screw - 14"	Trucks	Grain
23	Granite Dust	94 #/ft3	480 ft3/hr	Air Slide - 8"	Trucks	Minerals
24	Gypsum	55 #/ft3	250 TPH	Air Slide	Trucks & Rail Cars	Mineral
25	Coated Fracking Sand	100 #/ft3	350 TPH	Air Assisted Belt - 24"	Rail Cars	Mineral
26	Iron Sand	130 #/ft3	100 TPH	Belt	Trucks & Rail Cars	Mineral
27	Petrochemical Catalyst	40 #/ft3		Belt - 24"	Trucks & Rail Cars	Chemical
28	Phosphate	80 #/ft3	150 TPH	Belt - 24"	Trucks	Mineral
29	Plastic Scrap	35 #/ft3	1770 ft3/hr	Screw - 14"	Rail Cars	Plastics
30	Roofing Granules	100 #/ft3			Trucks & Rail Cars	Roofing
31	Salt	75 #/ft3	150 TPH	Belt - 24"	Rail Car	Mineral
32	Slaked Lime	60 #/ft3	200 TPH	Belt - 24"	Rail Car	Mineral
33	Soy Meal	40 #/ft3	15,000 ft3/hr	Drag - 21" X 26"	Trucks & Rail Cars	Grain
34	TIO2	48 #/ft3		Belt		Chemical
35	Wheat	45 #/ft3	9800 ft3/hr	screw - 20"	Trucks	Grain



Date:		Prepared By:		Rep	
Contact:			Position:		
Company:			Office #:		
Address 1:			Cell #:		
Address 2:			E-mail:		
City:			Web URL:		
State/ Prov:		Zip Code	Fax#:		
Industry		Plant's End-Product			

Revision To Existing Loading Bay	Current Conveying Method
New Loading Bay	Preferred Conveying Method

Transport Vehicle Type, Size & Capacity. (Indicate more than one if appropriate)

Truck (Size)	Railcar (Size)	Barge (Size)	Other (Size)
Reach = 22 Ft Std	Reach = 27 Ft Std	Reach =	Reach =
Vehicle Capacity (Cu. Ft. or Tons)		Desired Vehicle Loading Time	

Material Specifications:

Material Name		Bulk Density	
Particle size	Moisture	Angle of Repose	
Abrasive	Corrosive	Explosive	

Preferred Loader Mounting Method:

Post	Haunch	Platform	Other
------	--------	----------	-------

Preferred Drive System For Positioning:

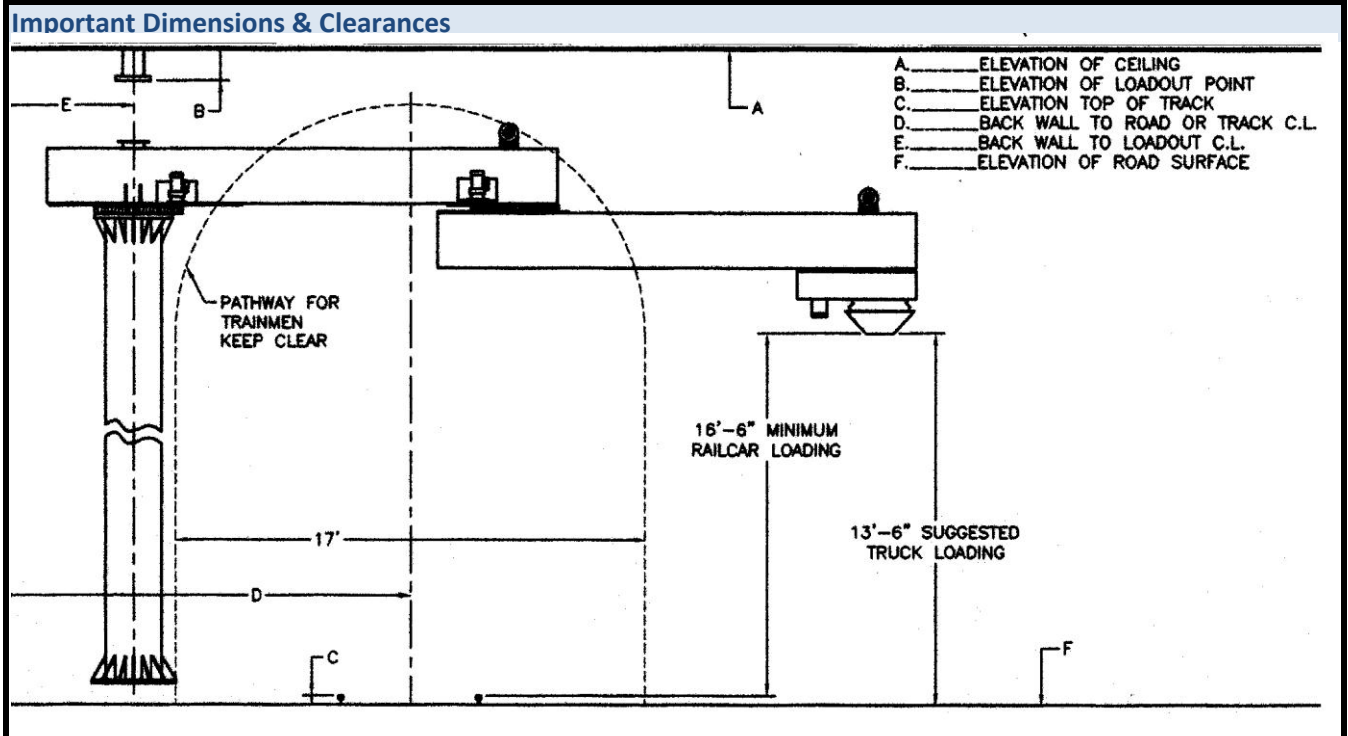
Electromechanical TEFC	Hydraulic	Other
------------------------	-----------	-------

Control Panel:

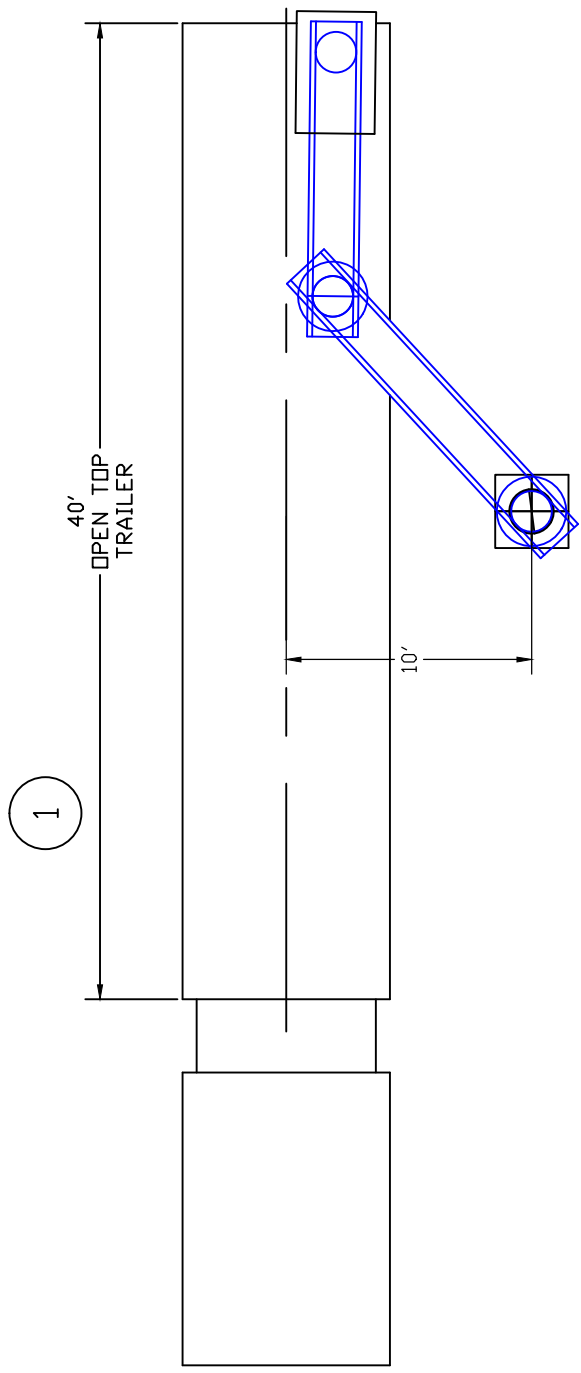
Customer Supplied		DYNATEK Supplied	
NEMA 4	NEMA 7	NEMA 9	NEMA 12

Load-out Spout:

Customer Supplied		DYNATEK Supplied	
W/O Dust Collection	With Dust Collection	Brand	



Notes & Questions



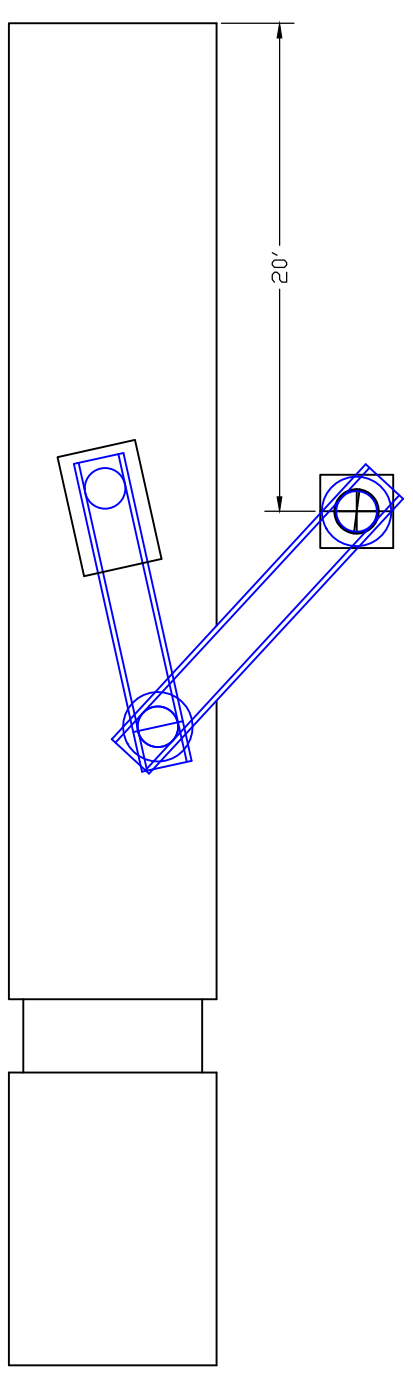
DUST RECOVERY LOAD OUT SPOUT

3

CONVEYOR OUTLET

CONVEYOR INLET

2



DYNATEK LOADING SYSTEMS

A DIVISION OF D&D PRODUCTS

SCALE	DATE	NAME	CHKD BY	SIZE
NTS	4/4/12	3D		

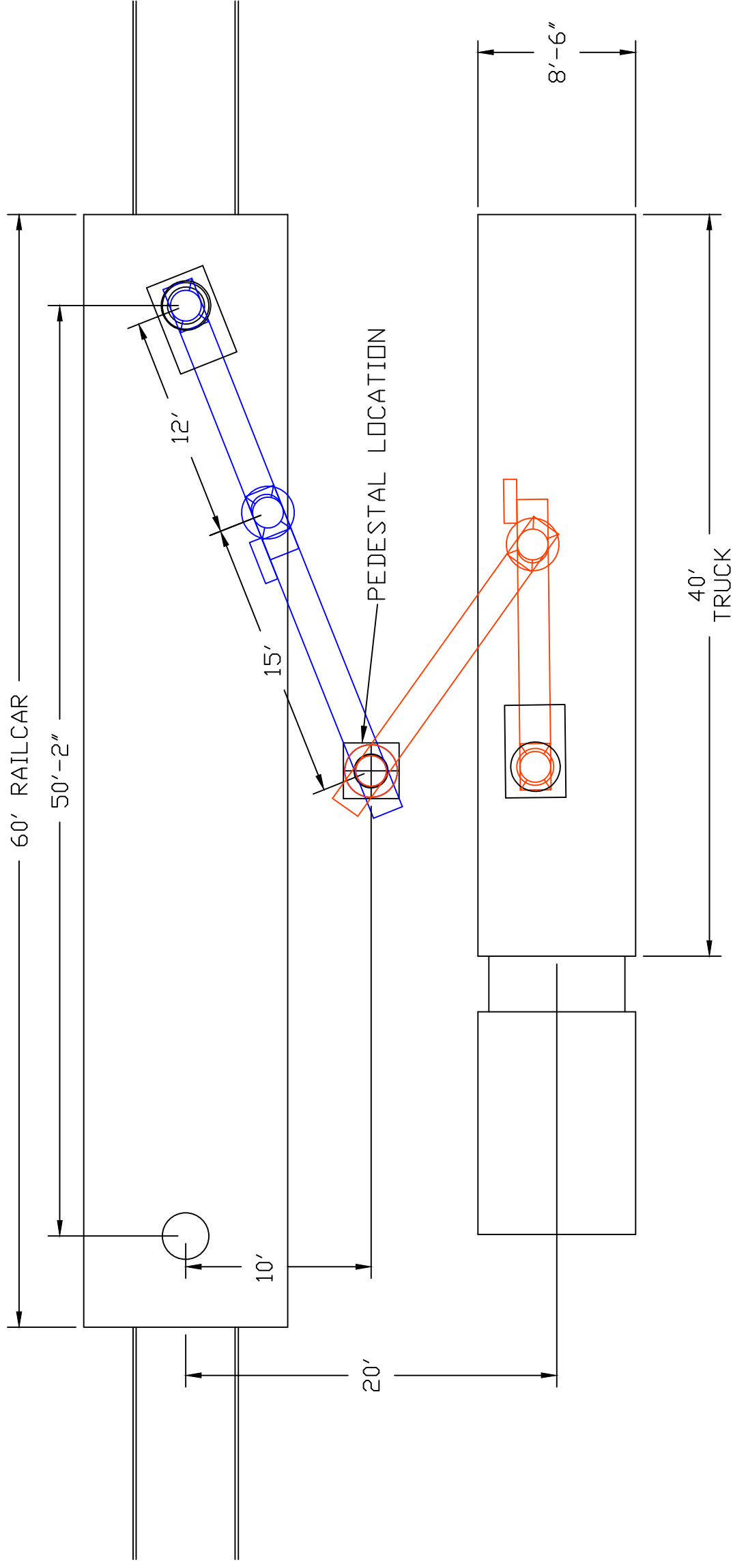
TITLE: TOP VIEW TRUCK LOADING

FOR: 22 FT LOADING ARMS

PART NO. 201225

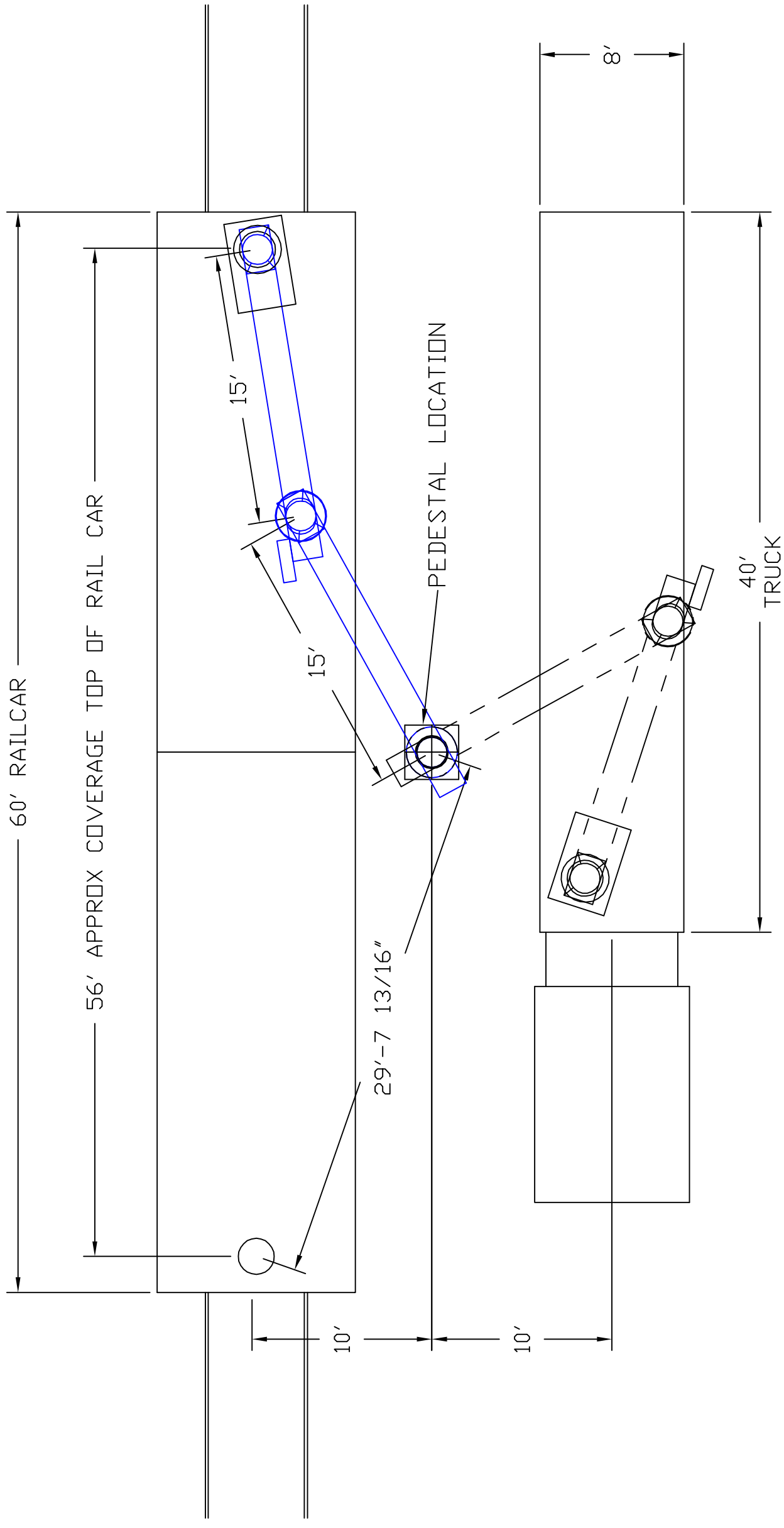
REV 0

PROPRIETARY NOTICE
 THIS PRINT REMAINS THE PROPERTY OF
 D&D PRODUCTS, INC. DYNATEK/MANIERRE DIV.
 INFORMATION CONTAINED THEREON IS CONFIDENTIAL
 IT IS LOANED, SUBJECT TO RETURN UPON DEMAND
 AND ON EXPRESS CONDITION THAT IT IS NOT TO BE
 REPRODUCED OR DISCLOSED IN ANY MANNER OR BY
 ANY MEANS WITHOUT WRITTEN AUTHORITY FROM
 D&D PRODUCTS, INC. DYNATEK/MANIERRE DIV.



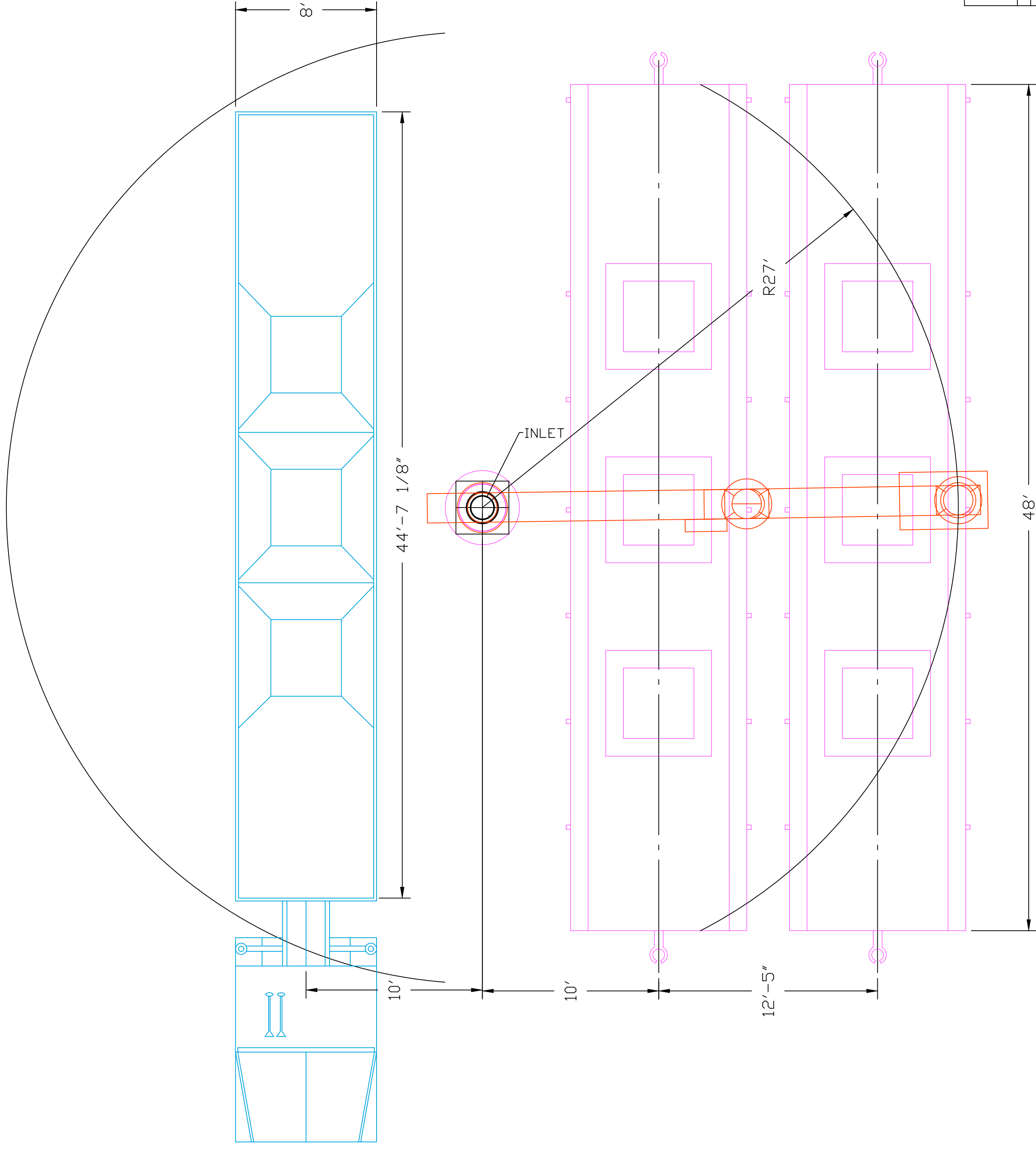
DYNATEK LOADING SYSTEMS			
A DIVISION OF D&D PRODUCTS			
SCALE	DATE	NAME	CHKD BY
NTS	4/4/12	3D	
TITLE: TOP VIEW RAIL/TRUCK LOADING			
FOR: 27 FT LOADING ARMS			
PART NO. 201226			
REV 0			

PROPRIETARY NOTICE
 THIS PRINT REMAINS THE PROPERTY OF
 D&D PRODUCTS, INC. DYNATEK/MANIERRE DIV.
 INFORMATION CONTAINED HEREIN IS CONFIDENTIAL
 AND IS TO BE KEPT STRICTLY CONFIDENTIAL
 AND IN EXPRESS CONDITION THAT IT IS NOT TO BE
 COPIED OR USED DIRECTLY OR INDIRECTLY IN ANY
 WAY WHATSOEVER WITHOUT WRITTEN AUTHORITY FROM
 D&D PRODUCTS, INC. DYNATEK/MANIERRE DIV.



DYNATEK LOADING SYSTEMS				
A DIVISION OF D&D PRODUCTS				
SCALE	DATE	NAME	CHKD BY	SIZE
NTS	4/4/12	3D		
TITLE: TOP VIEW RAIL/TRUCK LOADING				
FOR:				
PART NO. 201208			REV 0	

PROPRIETARY NOTICE
 THIS PRINT REMAINS THE PROPERTY OF
 D&D PRODUCTS, INC. DYNATEK/MANIERRE DIV.
 INFORMATION CONTAINED HEREON IS CONFIDENTIAL
 IT IS LOANED, SUBJECT TO RETURN UPON DEMAND
 AND ON EXPRESS CONDITION THAT IS NOT TO BE
 COPIED OR USED DIRECTLY OR INDIRECTLY IN ANY
 WAY WHATSOEVER WITHOUT WRITTEN AUTHORITY FROM
 D&D PRODUCTS, INC. DYNATEK/MANIERRE DIV.



DYNATEK LOADING SYSTEMS

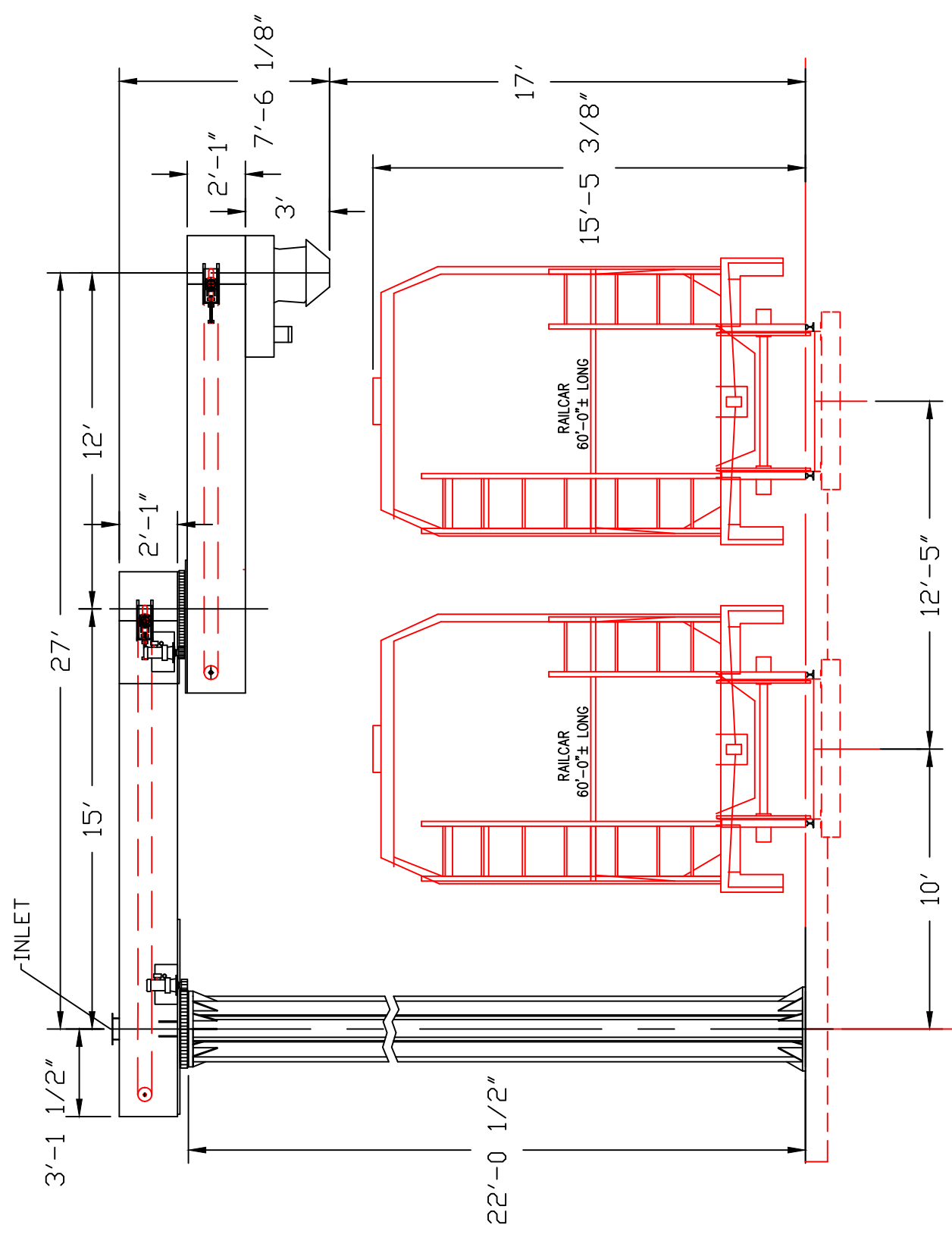
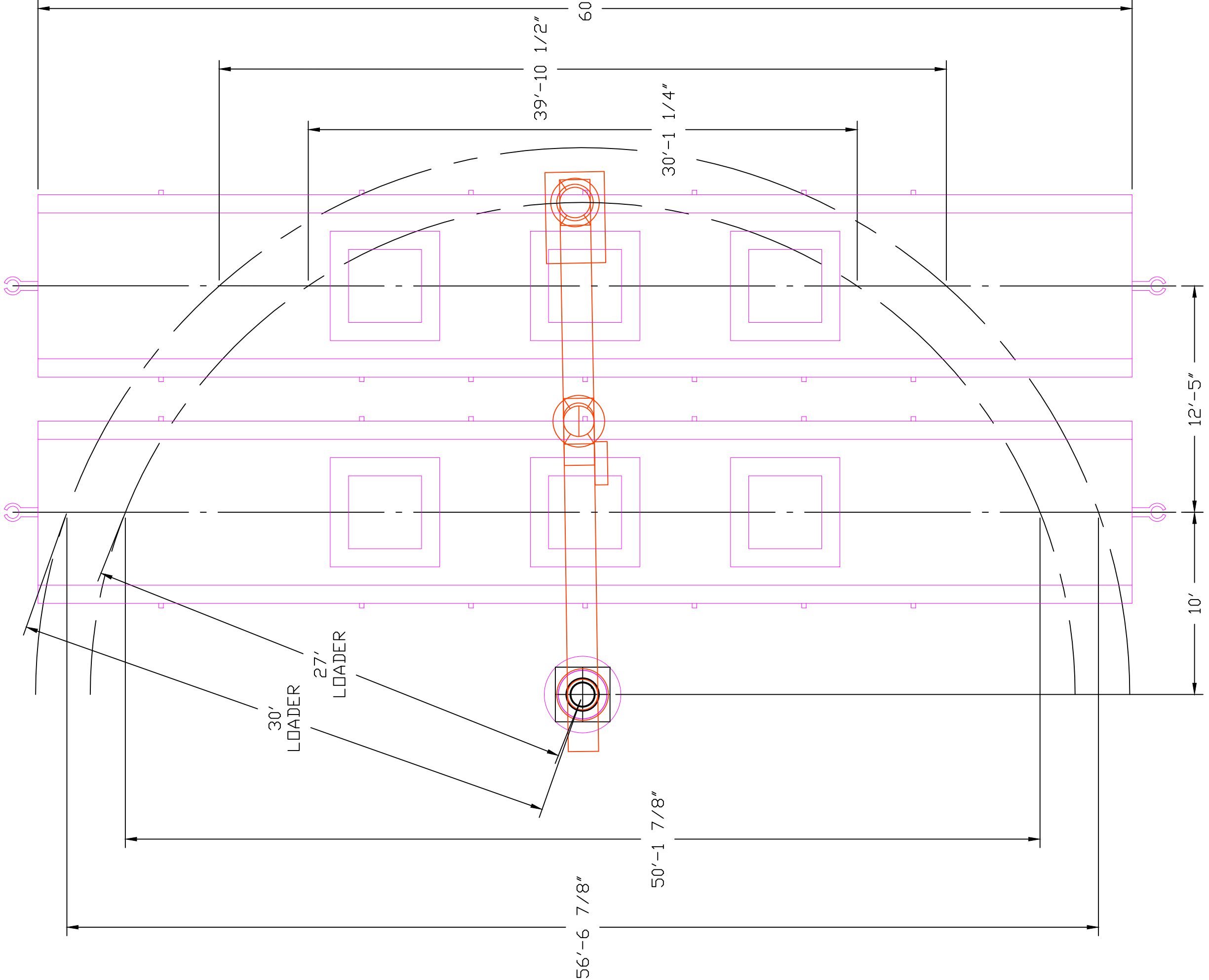
A DIVISION OF D&D PRODUCTS

SCALE	DATE	NAME	CHK'D BY	SIZE
NTS	5/07/12	3D		

TITLE: 57' LOADER COVERAGE RAIL & TRUCK
 FOR:

PART NO.	201259	REV	0
----------	--------	-----	---

PROPRIETARY NOTICE
 THIS DRAWING IS THE PROPERTY OF
 D&D PRODUCTS, INC. DYNATEK/MANIERRE DIV.
 INFORMATION CONTAINED HEREIN IS UNCLASSIFIED
 IT IS PROVIDED AS IS WITHOUT WARRANTY OF ANY KIND
 AND IN EXPRESS CONDITION THAT IS NOT TO BE
 REPRODUCED OR TRANSMITTED IN ANY FORM OR BY
 ANY MEANS, ELECTRONIC OR MECHANICAL, WITHOUT
 THE EXPRESS WRITTEN AUTHORITY FROM
 D&D PRODUCTS, INC. DYNATEK/MANIERRE DIV.



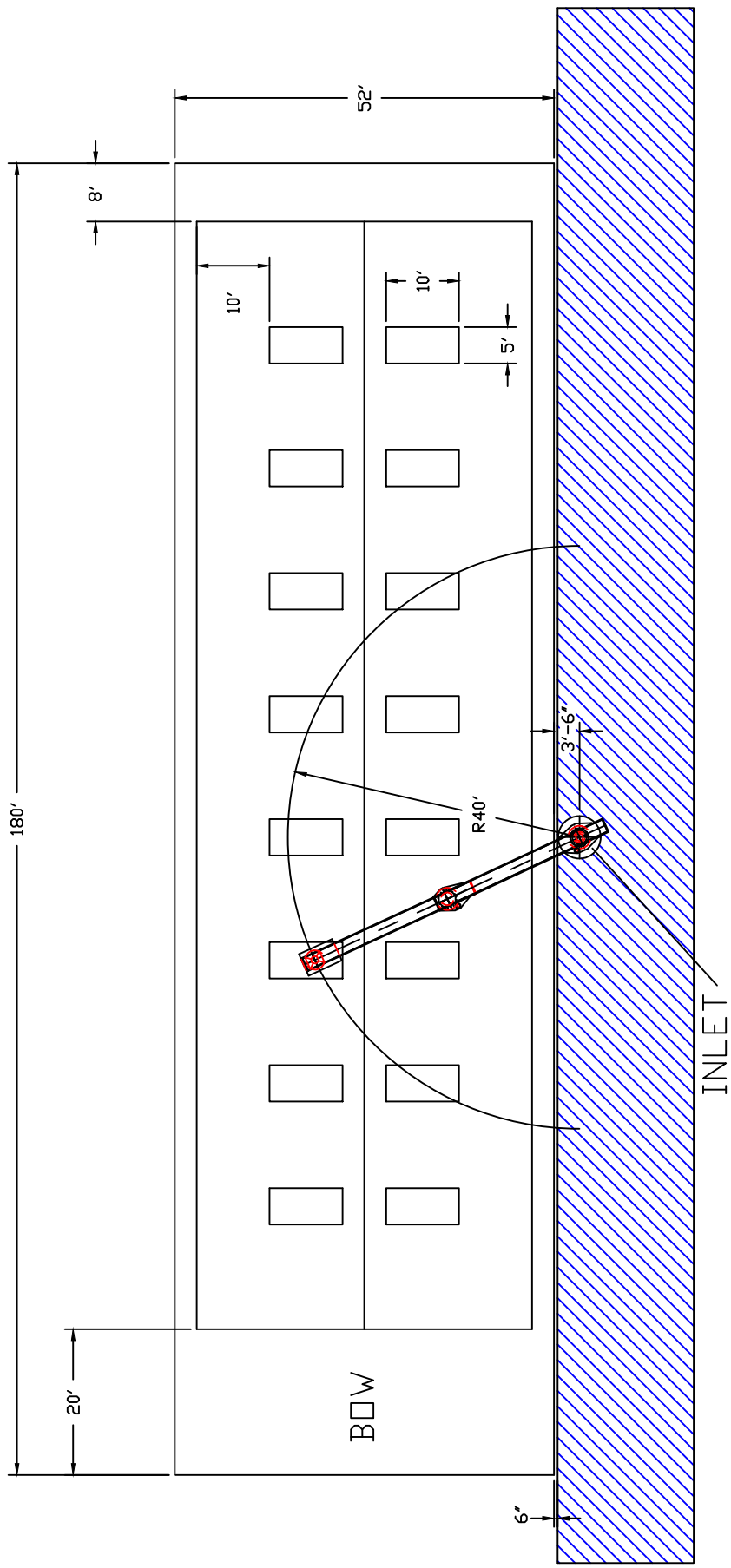
DYNATEK LOADING SYSTEMS
A DIVISION OF D&D PRODUCTS

SCALE	DATE	NAME	CHKD BY	SIZE
NTS	5/07/12	3D		

TITLE: COVERAGE FOR 27' & 30' LOADERS
FOR:

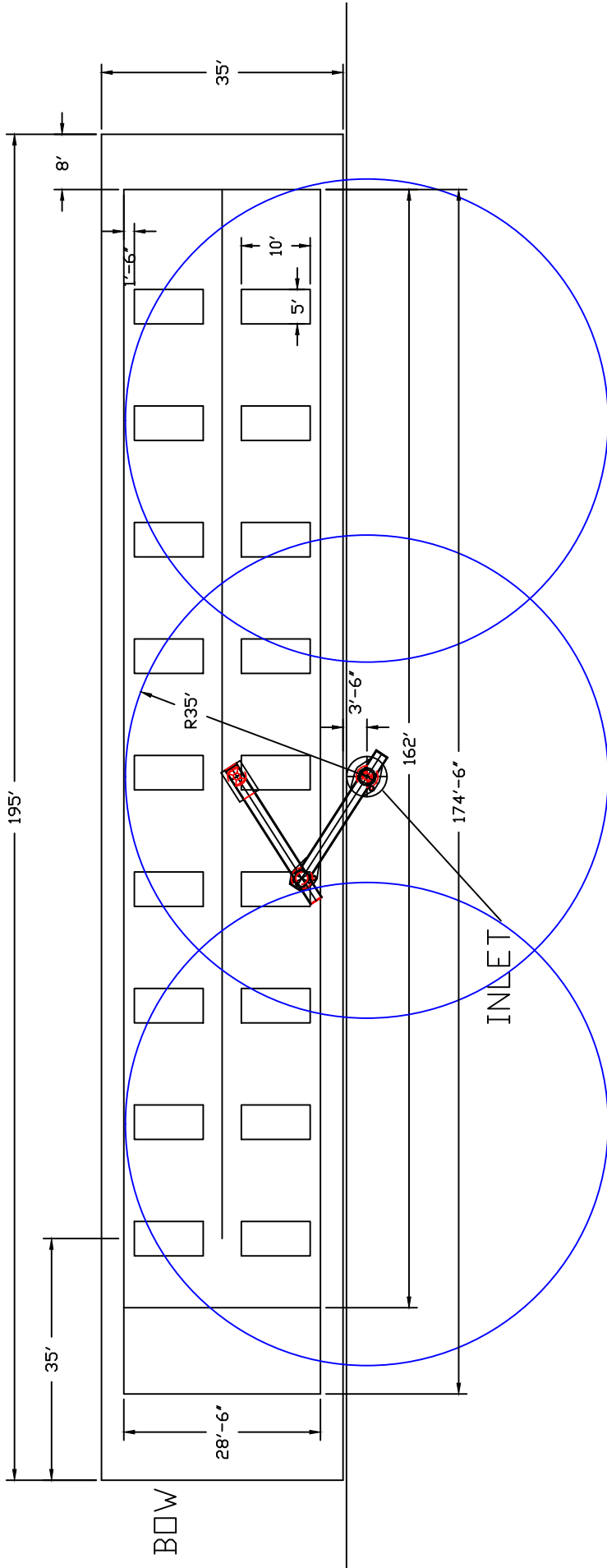
PART NO. 201232
REV 0

PROPRIETARY NOTICE
THIS PRINT REMAINS THE PROPERTY OF
DYNATEK LOADING SYSTEMS. ANY
INFORMATION CONTAINED HEREIN IS CONFIDENTIAL
AND IS LOANED, SUBJECT TO RETURN UPON DEMAND,
TO THE CLIENT. IT IS NOT TO BE REPRODUCED,
COPIED OR USED DIRECTLY OR INDIRECTLY IN ANY
MANNER WITHOUT WRITTEN AUTHORITY FROM
D&D PRODUCTS, INC. DYNATEK-CHANDLER, AZ.



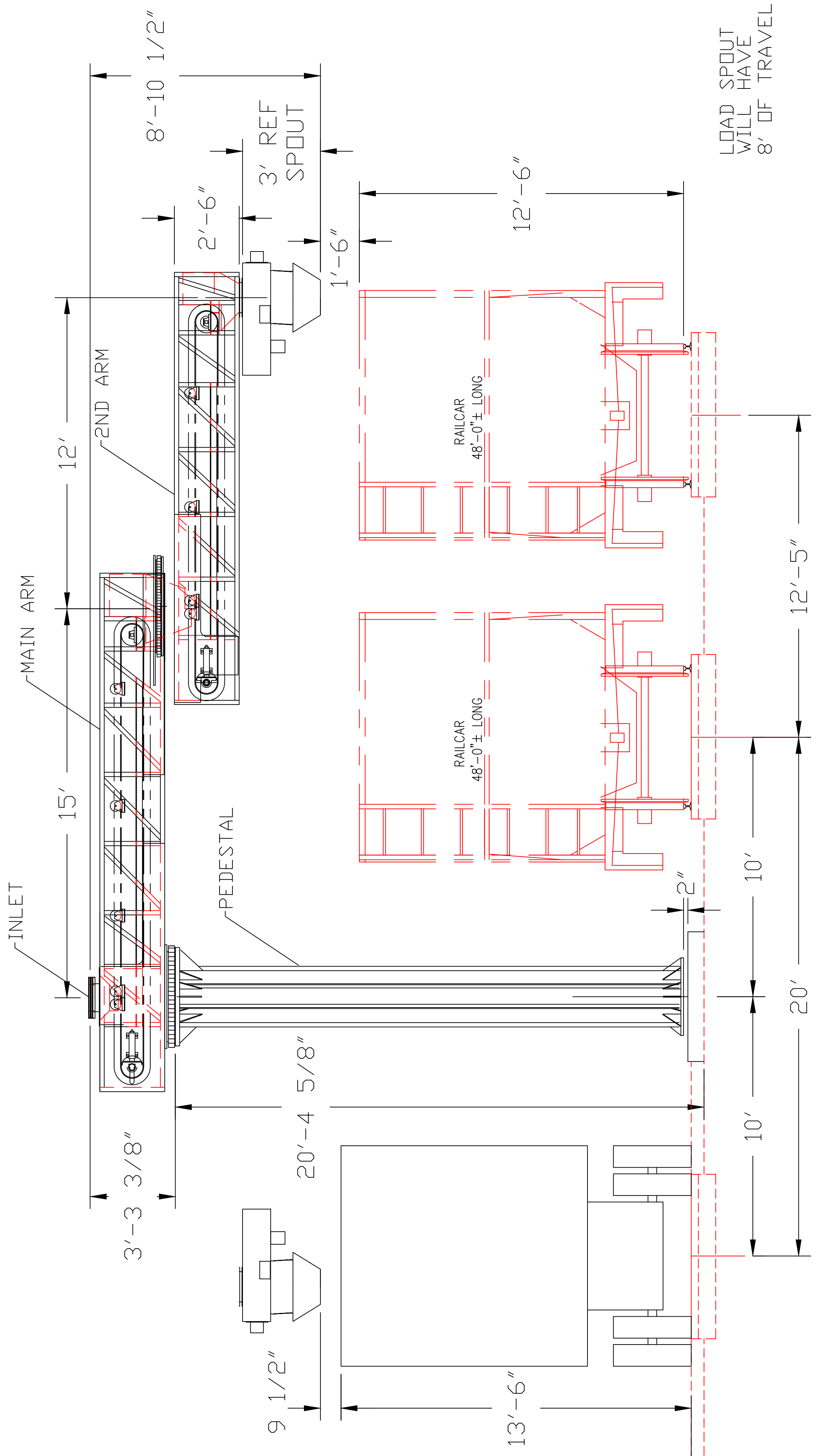
DYNATEK LOADING SYSTEMS			
A DIVISION OF DAD PRODUCTS			
SCALE	DATE	NAME	CHKD. BY
NTS	4/17/12	3D	
TITLE: 52 ft x 180 ft BARGE, PDS. 1			
FDR:			
PART NO. 201212			REV 0

PROPRIETARY NOTICE
 THIS DRAWING IS THE PROPERTY OF DYNATEK LOADING SYSTEMS, INC. AND IS NOT TO BE REPRODUCED, COPIED, OR TRANSMITTED IN ANY FORM OR BY ANY MEANS, ELECTRONIC OR MECHANICAL, INCLUDING PHOTOCOPYING, RECORDING, OR BY ANY INFORMATION STORAGE AND RETRIEVAL SYSTEM. ANY UNAUTHORIZED USE OF THIS DRAWING IS STRICTLY PROHIBITED. DYNATEK LOADING SYSTEMS, INC. IS NOT RESPONSIBLE FOR ANY DAMAGE OR LOSS OF PROFITS, INCLUDING CONSEQUENTIAL DAMAGES, ARISING FROM THE USE OF THIS DRAWING.



DYNATEK LOADING SYSTEMS			
A DIVISION OF DAD PRODUCTS			
SCALE	DATE	NAME	CHKD. BY
NTS	4/17/12	3D	
TITLE: 35 ft x 195 ft BARGE			SIZE
FOR:			
PART NO. 201239			REV 0

PROPRIETARY NOTICE
 THIS DRAWING IS THE PROPERTY OF DYNATEK LOADING SYSTEMS, INC. AND IS NOT TO BE REPRODUCED, COPIED, OR TRANSMITTED IN ANY FORM OR BY ANY MEANS, ELECTRONIC OR MECHANICAL, INCLUDING PHOTOCOPYING, RECORDING, OR BY ANY INFORMATION STORAGE AND RETRIEVAL SYSTEM. WITHOUT THE WRITTEN PERMISSION OF DYNATEK LOADING SYSTEMS, INC. ALL RIGHTS ARE RESERVED.



LOAD SPOUT
WILL HAVE
8' OF TRAVEL

DYNATEK LOADING SYSTEMS			
A DIVISION OF D&D PRODUCTS			
SCALE	DATE	NAME	CHKD BY
NTS	5/07/12	3D	
TITLE: 27' BELT LOADER END VIEW			
FOR:			
PART NO.	201258	REV	0

PROPRIETARY NOTICE
 THIS PRODUCT IS THE PROPERTY OF
 D&D PRODUCTS, INC. DYNATEK/MANIERE DIV.
 INFORMATION CONTAINED HEREIN IS UNCLASSIFIED
 IT IS UNCLASSIFIED EXCEPT WHERE SHOWN OTHERWISE
 AND IN EXPRESS CONDITION THAT IS NOT TO BE
 REPRODUCED OR TRANSMITTED IN ANY FORM OR BY ANY
 MEANS, ELECTRONIC OR MECHANICAL, INCLUDING
 PHOTOCOPYING, RECORDING, OR BY ANY INFORMATION
 SYSTEMS WITHOUT WRITTEN AUTHORITY FROM
 D&D PRODUCTS, INC. DYNATEK/MANIERE DIV.



Installation Assessment Questionnaire

Date:		Prepared By:	
--------------	--	---------------------	--

Company Information		User Names & Information			
Name		Name	Title / Responsibility	Telephone #	E-Mail
Shipping Address 1					
Shipping Address 2					
City					
State / Province					
Zip / Mail Code					
Country					

Loading Application Information						
Vehicle	Material #1	Bulk Density	Loading Rate	Material #2	Bulk Density	Loading Rate

Loader Performance Assessment Questions							
1) How frequently is your DYNATEK Loading System used?	Daily		Weekly		Monthly		Other
2) Has your DYNATEK Loading System been reliable?	Yes		No				
3) What if any operational issues have you had?							
4) Have you made any design changes to your loading system?							
5) Are there features or design changes you would like to see?							
6) Have the bolts in the outboard slewing bearing been replaced in the last two years?	Yes				Date		No
7) Would you purchase a DYNATEK oading System again?	Yes		No		Reason		
8) Are there other types of loaders DYNATEK should offer?							
9) Other comments or observations:							