

# 2012 Outlander



# A small price to pay for performance.

Starting at just \$22,345<sup>1</sup>, the 2012 Outlander offers uncompromising value. Available Super All-Wheel Control gives you sure-footed agility in just about any weather or road conditions. The exhilarating MIVEC power plant puts the road behind you in no time. And with an exceptional 28 MPG<sup>2</sup> highway, you'll enjoy additional savings for miles to come. Welcome to a whole new world of efficient performance.



Choice of fuel-efficient MIVEC engines



6-speed automatic transmission with Idle Neutral Logic



Available third row seating



Flap-fold tailgate

# Introducing the you-tility vehicle.

The spacious interior of the 2012 Outlander was thoughtfully designed to combine luxury with the latest technology. The available FUSE system that seamlessly links with Bluetooth-enabled phones, enabling hands-free calls with voice command—and access to your entire music collection. There's available seating for up to seven. Then there's the Rockford Fosgate® audio system you simply have to hear to believe. So step inside. This cabin is all about you.



FUSE Hands-free Link System™



FAST-KEY entry and starting system



Rockford Fosgate® Punch® premium sound system



Available Super All-Wheel Control (S-AWC)

# Build your Outlander

## TRIM / SPECIFICATIONS / COLOR

### Outlander ES

Starting at \$22,345<sup>1</sup>



- 2.4-liter, 168-horsepower MIVEC 4-cylinder engine
- Continuously Variable Transmission
- Flap-Fold Tailgate

### Outlander SE

Starting at \$23,345<sup>1</sup>



- 2.4-liter, 168-horsepower MIVEC 4-cylinder engine
- Available All-Wheel Control
- Compact stowable third row seat
- 18-inch alloy wheels

### Outlander GT (2WD)

Starting at \$25,895<sup>1</sup>



- 3.0-liter, 230-horsepower MIVEC V6 engine
- 6-speed automatic transmission with Idle Neutral Logic

### Outlander GT (S-AWC)

Starting at \$27,895<sup>1</sup>

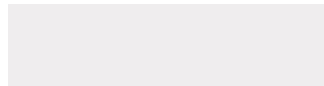


- 3.0-liter, 230-horsepower MIVEC V6 engine
- 6-speed Sportronic® automatic transmission with Idle Neutral Logic
- Super All-Wheel Control (S-AWC)

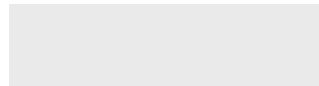
## EXTERIOR COLORS



Quartz Brown  
SE, GT



Diamond White  
ES, SE, GT



Cool Silver  
ES, SE, GT



Graphite Gray  
ES, SE, GT



Cosmic Blue  
SE, GT

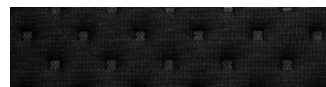


Labrador Black  
ES, SE, GT

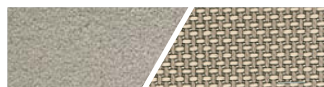


Rally Red  
ES, SE, GT

## INTERIOR COLORS



Black Fabric  
ES



Beige Premium Sport Fabric  
SE, GT (with Quartz Brown,  
Cosmic Blue and Diamond White only)



Black Premium Sport Fabric  
SE, GT



Beige Leather  
GT (with Quartz Brown, Cosmic Blue  
and Diamond White only)



Black Leather  
GT

## PACKAGES & ACCESSORIES

OPTIONS & PACKAGES	ES	SE	GT (2WD)	GT (S-AWC)
<b>PREMIUM PACKAGE:</b> Power glass sunroof, leatherette dash and front door trim double stitched accents, 710-Watt (max) Rockford Fosgate® Punch® Premium sound system with 9 speakers including 10-inch subwoofer, SIRIUSXM® Satellite Radio with a three-month subscription from date of sale, soft-touch upper I/P, auto-dimming rearview mirror and rear camera system	—	P	—	—
<b>TOURING PACKAGE:</b> Leather seating surfaces (1st & 2nd row), heated front seats, power adjustable driver's seat, 710-Watt (max) Rockford Fosgate® Punch® premium sound system with 9 speakers including 10-inch subwoofer, SIRIUSXM® Satellite Radio with a three-month subscription, auto-dimming rearview mirror and rear camera system	—	—	P	P
<b>NAVIGATION WITH REAR-VIEW CAMERA PACKAGE:</b> 40GB HDD Navigation with Music Server and Real-Time Traffic (RDS), auto-dimming rearview mirror, rearview backup camera monitor and auxiliary video input jack (Requires Touring Package)	—	—	—	P

ACCESSORIES	ES	SE	GT (2WD)	GT (S-AWC)
Rear park assist sensors	A	A	A	A
FUSE Hands-free Link™ System	A	A	A	A
Sunroof deflector	—	A	A	A
Side wind deflector	A	A	A	A
6 CD in-dash changer audio head unit	A	—	—	—
Remote Engine Start	A	A	A	A
Wheel locks	—	A	A	A
All-weather floor mats	A	A	A	A
Body-side moldings (gray)	A	A	A	A
Navigation system	A	A	A	A

## TRIMS & SPECS

ENGINE	ES	SE	GT (2WD)	GT (S-AWC)
Engine Type	2.4L MIVEC I-4	2.4L MIVEC I-4	3.0L MIVEC V6	3.0L MIVEC V6
Valvetrain	DOHC 16-valve	DOHC 16-valve	SOHC 24-valve	SOHC 24-valve
	Mitsubishi Innovative Valve-timing Electronic Control system (MIVEC)			
Horsepower / Torque	168 hp @ 6000 rpm / 167 lb-ft @ 4100 rpm	168 hp @ 6000 rpm / 167 lb-ft @ 4100 rpm	230 hp @ 6250 rpm / 215 lb-ft @ 3750 rpm	230 hp @ 6250 rpm / 215 lb-ft @ 3750 rpm
EPA-estimated MPG (city / hwy) <sup>2</sup>	2WD: 23/28	2WD: 23/28 AWC: 22/27	2WD: 19/26	S-AWC: 19/25

S = Standard    O/P = Option or Package    — = Not available    A = Accessory

Features and options subject to change without notice.

## TRIMS & SPECS CONTINUED

ENGINE CONTINUED	ES	SE	GT (2WD)	GT (S-AWC)
Recommended Fuel	Regular Unleaded	Regular Unleaded	Premium Unleaded	Premium Unleaded
Fuel Type Capacity (gal.)	2WD: 16.6	2WD: 16.6 AWC: 15.8	2WD: 16.6	S-AWC: 15.8

### TRANSMISSION

Type	ES	SE	GT (2WD)	GT (S-AWC)
Type	CVT Sportronic®	CVT Sportronic® with paddle shifters	6-speed Sportronic® with paddle shifters and Idle-Neutral Logic	

### SUSPENSION

Front	ES	SE	GT (2WD)	GT (S-AWC)
Front	MacPherson Strut, 22mm stabilizer bar	MacPherson Strut, 22mm stabilizer bar	MacPherson Strut, 22mm stabilizer bar	MacPherson Strut, 22mm stabilizer bar
Rear	Multi-link, 20mm stabilizer bar	Multi-link, 20mm stabilizer bar	Multi-link, 20mm stabilizer bar	Multi-link, 20mm stabilizer bar

### STEERING

Type	ES	SE	GT (2WD)	GT (S-AWC)
Type	Rack-and-pinion, Variable assisted power	Rack-and-pinion, Variable assisted power	Rack-and-pinion, Variable assisted power	Rack-and-pinion, Variable assisted power
Turning Circle, curb to curb (ft.)	34.8	34.8	34.8	34.8

### BRAKES

Front	ES	SE	GT (2WD)	GT (S-AWC)
Front	11.6 in. ventilated disc	11.6 in. ventilated disc	11.6 in. ventilated disc	11.6 in. ventilated disc
Rear	11.9 solid disc	11.9 solid disc	11.9 solid disc	11.9 solid disc
Control System	Anti-lock Brakes (ABS)	Anti-lock Brakes (ABS)	Anti-lock Brakes (ABS)	Anti-lock Brakes (ABS)

### WHEELS & TIRES

Tires	ES	SE	GT (2WD)	GT (S-AWC)
Tires	P215/70R16	P225/55R18	P225/55R18	P225/55R18
Wheels	16-inch steel with full cover	18-inch aluminum alloy	18-inch aluminum alloy	18-inch aluminum alloy

EXTERIOR DIMENSIONS	ES	SE	GT (2WD)	GT (S-AWC)
Wheelbase (in.)	105.1	105.1	105.1	105.1
Length (in.)	183.7	183.7	183.7	183.7
Width (in.)	70.9	70.9	70.9	70.9
Height (in.)	66.1 (67.7 w/ roof rails)	66.1 (67.7 w/ roof rails)	66.1 (67.7 w/ roof rails)	66.1
Track, front/rear (in.)	60.6/60.6	60.6/60.6	60.6/60.6	60.6/60.6
Curb Weight (lbs.)	2WD: 3384	2WD: 3516 AWC: 3600	2WD: 3626	S-AWC: 3780

### INTERIOR DIMENSIONS

Head Room, front/rear (in.)	ES	SE	GT (2WD)	GT (S-AWC)
Head Room, front/rear (in.)	40.3/38.3 (39.8/37.5 w/ Sunroof)	40.3/38.3 (39.8/37.5 w/ Sunroof)	40.3/38.3 (39.8/37.5 w/ Sunroof)	40.3/38.3 (39.8/37.5 w/ Sunroof)
Shoulder Room, front/rear (in.)	56.4/56.1	56.4/56.1	56.4/56.1	56.4/56.1
Leg Room, front/rear (in.)	41.6/39.6	41.6/36.8	41.6/36.8	41.6/36.8
Passenger Volume (cu. ft.)	100.4	100.4	100.4	100.4
Cargo Area (Behind Front Seat) (cu. ft.)	72.6	72.6	72.6	72.6
Cargo Area (Behind Rear Seat) (cu. ft.)	36.2	36.2-39.5	36.2-39.5	36.2-39.5
Cargo Area (Behind 3rd Seat) (cu. ft.)	—	14.9	14.9	14.9

### PERFORMANCE

Magnesium-alloy paddle shifters	ES	SE	GT (2WD)	GT (S-AWC)
Magnesium-alloy paddle shifters	—	S	S	S
Active Stability Control (ASC)	S	S	S	S
All-Wheel Control (AWC)	—	O	—	—
Super All-Wheel Control (S-AWC)	—	—	—	S

S = Standard    O/P = Option or Package    — = Not available    A = Accessory

Features and options subject to change without notice.

## TRIMS & SPECS CONTINUED

<b>EXTERIOR</b>	<b>ES</b>	<b>SE</b>	<b>GT (2WD)</b>	<b>GT (S-AWC)</b>
Aluminum roof panel	S	S	S	S
Xenon High Intensity Discharge (HID) headlamps	—	—	S	S
Fog lights with chrome surround	—	S	S	S
Front grille with chrome surround	—	S	S	S
Rear combination LED tail lamps with clear lenses	S	S	S	S
Color-keyed power side-view mirrors with LED indicator lamps	—	S	S	S
Rain-sensing windshield wipers	—	—	S	S
<b>SAFETY AND SECURITY</b>				
Reinforced Impact Safety Evolution (RISE) unibody construction	S	S	S	S
Six airbags, <sup>3</sup> including front, front seat-mounted side, roof mounted curtain for front and outboard second-row seats	S	S	S	S
LATCH system	S	S	S	S
Anti-theft engine-immobilizer and security alarm system	S	S	S	S
Anti-lock Brake System (ABS) with Electronic Brake force Distribution (EBD)	S	S	S	S
Traction Control Logic (TCL)	S	S	S	S
Hill Start Assist	—	—	—	S

<b>COMFORT AND CONVENIENCE</b>	<b>ES</b>	<b>SE</b>	<b>GT (2WD)</b>	<b>GT (S-AWC)</b>
Manual air conditioning with climate control	S	S	—	—
Automatic air conditioning with climate control	—	—	S	S
Full-color LCD multi-information display	—	S	S	S
Dual visor vanity mirrors with illumination	S	S	S	S
Cruise control with steering-wheel mounted controls	S	S	S	S
Power windows with auto up/down driver's switch	S	S	S	S
FAST-key passive entry and starting system with panic alarm feature	—	S	S	S

S = Standard    O/P = Option or Package    — = Not available    A = Accessory

Features and options subject to change without notice.

# WARRANTY

**10 YEAR/100,000 MILE  
POWERTRAIN**

**5 YEAR/60,000 MILE  
BUMPER-TO-BUMPER**

**7 YEAR/100,000 MILE  
ANTI-CORROSION/PERFORATION**

**5 YEAR/UNLIMITED MILEAGE  
ROADSIDE ASSISTANCE**

It just makes sense: Our vehicles are different than any on the road, so why shouldn't our warranties be a cut above as well? At Mitsubishi, we're so confident in the quality, reliability and durability of the Outlander that we back it with one of the best Powertrain Limited Warranties in the business: 10 years or 100,000 miles. It's just one in a number of extensive warranties that come with Outlander—a list that includes a 5-year/60,000-mile fully transferable bumper-to-bumper New Vehicle Limited Warranty, a 7-year/100,000-mile Anti-Corrosion/Perforation Limited Warranty and 5 years/unlimited miles Roadside Assistance.<sup>4</sup> All designed to give drivers the security of knowing that their Outlander is engineered for the long-term, with a warranty designed to keep it on the road long into the future.

Technical data, equipment pricing and options shown are based

on the latest information available at the time of printing and are subject to change without notice. Colors may vary due to the printing process. Exterior and interior lights on vehicles shown may be illuminated for illustration purposes only. Vehicles are shown with optional equipment. Not all equipment is available on every model. For complete details about equipment configuration and Mitsubishi Genuine Accessories, please contact your Mitsubishi retailer.

Mitsubishi Motors North America, Inc.  
 6400 Katella Ave., Cypress, CA 90630-0064

1-888-MITSU2011

[MITSUBISHICARS.COM](http://MITSUBISHICARS.COM)

<sup>1</sup> Manufacturer's Suggested Retail Price for Outlander ES. Excludes destination/handling, tax, title, license etc. Retailer price, terms and vehicle availability may vary.

<sup>2</sup> EPA mileage estimate. Actual mileage may vary.

<sup>3</sup> Airbags are part of a Supplemental Restraint System (SRS). To decrease the risk of injury from a deploying airbag, always wear your seatbelt, sit upright in the middle of the seat and do not lean against the door. Always place children 12 and under in the rear seat and use appropriate child restraints. Never place a rear facing infant restraint in the front seat. See your owner's manual and instructions provided with your child restraint for additional information.

<sup>4</sup> The 10-year/100,000-mile Powertrain Limited Warranty applies only to the original owner of new retailed 2012 Outlander models purchased from an authorized Mitsubishi dealer. Subsequent owners receive the balance of the New Vehicle Limited Warranty of 5 years/60,000 miles. See retailer for limited warranty and roadside assistance terms and conditions.

