

LEEDS

www.leedsmicro.com

EXPERIENCE
OUR
VISION



A Full Spectrum of Custom Products

January 2011

Table of Contents

BX & BH2 Accessories

Part Number	Description	Page Number
5-S119FO	BH2/BX Adapter for Flexible Fiber Lightguide Adapter	B-26
5-UL1035M	U-LS30-4 - With Socket Reflector	B-23
LBX-001	Condenser flip-top lever extension for the BX45	B-1
LBX-001-2	Condenser flip-top lever extension for the BX45	B-28
LBX-072	Knob extension kit for BX stage	B-2
LBX-075	Knob Extension Kit for BX/BX2 Rackless Stage	B-2
LBX-100	Slider Housing	B-2
LBX-102T	5 Position Auxiliary Filter Wheel for the BX/BX2 and IX/IX2	B-17
LBX-110	Tintplate Slider	B-3
LBX-152	Dual View Support Stand Offset Mounting Bracket	B-29
LBX-155	Adjustable Support Bracket for the UDO	B-30
LBX-219	Rotatable Analyzer	B-3
LBX-220	Rotatable Analyzer	B-3
LBX-300	Low profile mount	B-5
LBX-301	Adapter for BX to BH2/CH30 stand	B-6
LBX-353	Spacer for U-DO to U-MDO	B-6
LBX-5RE	Adapter to mount BX40 nosepiece to the BX50 stand	B-7
LBX-B-0151	Telescoping support base	B-4
LBX-D6RE	Adapter to mount U-R156 & U-R177 nosepieces to BX40 or BX45	B-8
LBX-DLH	Dual lamphouse adapter	B-9
LBX-FOMET	Fiber optic lamphouse adapter	B-10
LBX-HYBRID	Hybrid stand with 18" Z-axis range	B-11
LBX-HYBRID-RSM	Reflected light stage mount	B-11
LBX-HYBRID-SZX	Mount for SZX and SZX-FO/FOF focus unit	B-11
LBX-HYBRID-TSM	Transmitted light stage module	B-11
LBX-NEO	NEO Thread for BX/BX2	B-12
LBX-RMS	RMS standard thread for BX/BX2	B-12
LBX-U-EPA	BX/BX2 Height adjusting adapter	
LCT-UPOL-SL	Condenser with Polarizer on Slider	B-24
LMA-001	Condenser extension handle	B-13
LMN-NEO	NEO thread for BH2	B-12
LMN-RMS	RMS standard thread for BH2	B-12
LPI-1XCS25	1X C-Mount Adapter/Uniblitz Shutter	B-18
LPI-BX2FXW	BX2 White Ceramic Coated Fixed Stage	B-27
LPI-BX2GLDE	Glide Stage for BX/BX2 Frames	B-22
LPI-CTR1X	Centerable 1x C-mount adapter	B-18
LPI-DTRU	Dual Photo Port Adapter	B-19
LPI-M34-M25	Thread Adapter - M34 to M25	B-21
LPI-M34-RMS	Thread Adapter - M34 to RMS	B-25
LPI-SRGLC	240° Circular Pol Stage	B-20
LPI-U-IT134	1" Extension Tube for the U-IT134	B-16
LPI-U-UCLH	Collector lens assembly	B-10
LPI-U-V311SL	1X C-mount adapter with slider allows for a filter to be inserted into the camera's raypath.	B-18
LPI-WI-XYM2	2x3, X-Y translation base for BX51WIF	B-15
LPI-WI-XYM2MOT	Motorized 2x2, X-Y translation base for BX51WIF	B-15
SHM0000-L	Single shim for NEO size thread	B-14
SHM0000-S	Single shim for RMS size thread	B-14
SHM-NEO	Set of 70 shims for NEO size thread	B-14
SHM-RMS	Set of 70 shims for RMS size thread	B-14

Stereo

Part Number	Description	Page Number
LMA-036A	Drop prevention collar	S-1
LMS-150	Heavy boom base & 24" column	S-1
LMS-151	Horizontal arm assembly	S-1
LMS-197	14" Vertical column with table clamp	S-1
LMS-197-24	24" Vertical column with table clamp	S-1
LMS-198	14" Vertical column with flange mount	S-1
LMS-198-24	24" Vertical column with flange mount	S-1
LMS-200	Boom base & 14" column	S-1
LMS-200-24	Boom stand base & 24" column	S-1
LMS-201	Ball bearing boom arm	S-1
LMS-300	Articulating boom arm - double jointed fold away design	S-1
LMS-340	BF/DF transillumination base	S-10
LMS-341	12V/50W variable power supply	S-10
LMS-SZX-3RE	Three place nosepiece for SZX-small	S-11
LMS-SZX-3RE-L	Three place nosepiece for SZX-large	S-11
LMS-SZX-3RE-LM	Three place nosepiece for SZX-large with macro positions	S-11
LMS-SZX-3RE-M	Three place nosepiece for SZX-small with macro positions	S-11
LMS-SZXBIFO	Adapter for 8520 to SZX stand	S-12
LMS-SZXP	SZX Bonder Post Mount	S-12
LMS-SZX-OAX	Off axis light attachment for SZX stereo microscope	S-13
LPI-KSTAND	K Stand base for bonder arm	S-14
LSZ-1XCMT2	1X C-Mount for SZ61TR.	S-15
LSZ-1XSZ61	Removal of .5X lens	S-15
LSZ-U-SPT	PE Tube for SZ-6145TR	S-15
LMS-202-HBP	Crank Boom stand with heavy base	S-16
LMA-058	Inclination joint kit	S-2
LMS-SZX2BP	Bonder Post Mount	S-20
LPI-AN-LED	Polarizer for SZX2-ILLT LED Base	S-21
LMS-TILT	Tilting and adjustable base	S-22
LMS-Z-CRK14	Z-Axis Crank Post for Olympus STU2 Boom Stand	S-23
LMS-Z-CRK14L	Z-Axis Crank Post for the Leeds Boom Stand Bases	S-23
LPI-UVCHLR	Universal C-Shaped Holder	S-24
LMS-SZX-MAC10	SZX10 Objective Mount with on Axis Shift	S-25
LMS-SZX-MAC16	SZX16 Objective Mount with on Axis Shift	S-25
LMS-300BIFO	Mount for A08520 to LMS-300	S-26
LMS-700	Adjustable Height Stage Mount	S-29
LMA-059	Adapter for Nicholas to S-0129A base	S-3
LMA-059M-5/8ID	Adapter for F.O. light guide w/spot lens to S-0129A base	S-3
LPI-AO8060	Ferrule Adapter for 10mm light guide to Olympus SZX 12mm.	S-30
LPI-LED-SH	Stage Mount for BH2-SH Stage to SZX2-ILLT	S-31
LPI-SICPG	Metal Plate with glass for SIC4 and BH2-SH Stages	S-31
LMS-350SZ	Retractable Arm for the SZ/SZ2 bonder mount	S-32
LMS-350SZX	Retractable Arm for the SZX	S-32
LMS-225LEDSL	LED Transmitted Light Base W/Sliding Mirror for SZ2-ST Stand	S-33
LMS-LEDS	LED Spot Light only for LMS-225LED	S-33
LMS-LEDSK	LED Spot Light Kit, Including Base, Arm & Power Control	S-33
LMS-SZX16-OAX	Off axis light attachment for the SZX16 stereo microscope	S-34
LMA-060	SZ thread adapter	S-4
LMA-061	Ferrule for Dolan Jenner 180	S-4
LMA-063	Ferrule for Fostec	S-4
LMA-065	Ferrule for Olympus	S-4
LMA-066	Ferrule for Chiu	S-4
LPI-112	Polarizer/analyzer attachment	S-4
LRL-410	High clearance ringlight - 4-ft length	S-4
LMS-100	Boom stand	S-5
LMS-225R	Transmitted light base (6v 20w halogen)	S-6
LMS-226	7 watt fluorescent transmitted light base	S-6
LMS-225W	Transmitted light base (6v 20w halogen)	S-7
LMS-226W	7 watt fluorescent transmitted light base	S-7
LMS-230	BF/DF/oblique mirror base	S-8
LMS-232	32mm post mount	S-8
LMS-SZX-R	Drop prevention collar	S-8
LMS-235	BF/Oblique mirror base	S-9

Inverted

Part Number	Description	Page Number
BX-DLH	Dual lamphouse adapter	B-10
LBX-2352	360° rotatable analyzer slider with 32mm polarizer	I-1
LBX-IX2MIL	IX2 Metallurgical illuminator	I-1
LBX-IXROT-1X3	1 x 3 slide rotator for IX/IX2 3-plate design stage	I-3
LBX-IXROT-1X3/35	1 x 3 slide & 35mm Petri dish rotator for IX/IX2 3-plate design stage	I-3
LBX-IXROT-1X3/50	1 x 3 slide & 50mm Petri dish rotator for IX/IX2 3-plate design stage	I-3
LBX-IXSL	X and Y Stage Lock for IX Stages	I-6
LPI-CKX3PLT	2x2 Three plate stage (Includes metal insert)	I-2
LPI-CKX-T90	CKX condenser pillar 90° pivot modification	I-4
LPI-IX2ANO	Blank 25mm Filter Slider for IX2-AN slot	I-5
LPI-IX2ANO-32	Blank 32 mm Filter Slider for IX2-AN slot	I-5

MX

Part Number	Description	Page Number
LMS-MEMS	Specimen tilting plate for the MX-SIC8	MX-1

CX

Part Number	Description	Page Number
LPI-CXS	CX/BX Swivel Head Mount	CX-3
LPI-CXTET	Tetrad kit and modification to CX31 or CX41 microscope	CX-1
LPI-CXUDO	Support brace for U-DO3 to CX31/41 frame	CX-2

Rollscope

Part Number	Description	Page Number
ROLLSCOPE1OT	1-axis rollscope base with focusing optical tube	R-1
ROLLSCOPE1SD	1-axis rollscope base with focusing arm and post mount	R-1
ROLLSCOPE2OT	2-axis rollscope basewith focusing optical tube	R-1
ROLLSCOPE2SD	2-axis rollscope base with focusing arm and post mount	R-1

MVX 10

Part Number	Description	Page Number
LBX-HYBRID	MVX 10 Hybrid Stand	MVX-2
LMS-MVX-3RE	Three place nosepiece for MVX10	MVX-2
LPI-DPP	Dual Photo Port Module	MVX-3
LPI-MVX-V311SL	MVX 1X C mount adapter with filter slider	MVX-4

FluoView

Part Number	Description	Page Number
LFV-EMBFS	18mm Filter holder for the FluoView 300	FV-1

Z Plus

Part Number	Description	Page Number
LPI-Z+BXARM	BX2 Optical Arm	Z-2
LPI-Z+KOE	Köhler Illimination Module	Z-2
LPI-Z+RFA16	Fluorescence Illuminator	Z-1
LPI-Z+RFARM	RFA16 Optical Arm	Z-1

Simple Copy Stand

Part Number	Description	Page Number
	Simple Copy Stand	C-1

Measuring Systems

Part Number	Description	Page Number
LPI-BX51ZHE	Z-Axis Linear Encoder with .5um resolution.	MS-1
LPI-DRO3QC	3-Axis QC-130 Digital Readout with RS232 output.	MS-1
LPI-SFHF25	Video Inspection System	MS-2
LPI-SFHF25	Video Inspection System	MS-2
LPI-SFHF25AIO	All in One Video Inspection System	MS-3

LPI-SIC4LE-.5UM	2-Axis Linear Encoders with .5um resolution on Olympus U-SIC4R2	MS-1
-----------------	---	------

BX & BH2 Accessories

Extension Handle for Swing-Out Condenser



The **LBX-001** shown mounted on **BX45** condenser.

The **LBX-001** simple extension handle makes it easier to reach and operate the swing-out condenser knob located underneath the stage.

The **LBX-001** extension handle fits the swing-out type condenser on the **BX45** stand.

Order Product Number

LBX-001	Condenser flip-top lever extension for the BX45
----------------	--



The **LBX-001** extension handle

Knob Extension Kits for BX Stage

The **LBX-072** and **LBX-075** knob kit extends the length of the low coaxial control knobs on BX stage by one inch. It also provides larger diameter control knobs for better ergonomic situations.

The **LBX-072** kit includes two knobs that snap onto the existing knobs of a **BX** stage and an extension knob for the x-axis tension control on a rack stage.

The **LBX-075** kit also includes two knobs that snap onto the existing knobs of a **BX/BX2** rackless stage.



The **LBX-072** shown mounted on a **BX** stage

Order Product Number

LBX-072	Knob extension kit for BX Rack Drive stage
LBX-075	Knob extension kit for BX/BX2 Rackless stage



LBX-072



The **LBX-075** shown mounted on a rackless stage



LBX-075

LBX-075 Stage with Rackless drive

U-SVRB-4
U-SVLB-4
U-SVRO
U-SVLO

LBX-072 Stages with Rack and Pinion drives

U-SVRS
U-SVLS
U-SVRDT
U-SVLDT
U-SVRSB
U-SVLSB
U-SVRDTB
U-SVLDTB

Leeds Custom Products

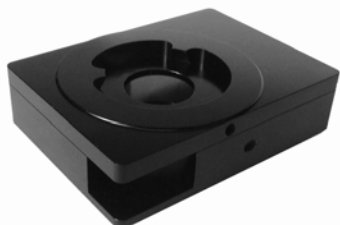
Phone: 800-444-5333 • 763-546-8575

Fax: 763-546-4369

custom@leedsmicro.com

www.leedsmicro.com

Gout / Pseudo Gout and Simple Polarizing Accessories



LBX-100



LBX-110



LBX-219 and LBX-220

Leeds offers polarizing accessories design for the Olympus **B-MAX** series of microscopes. Most are used with the **BX 40**, which does not have an integral slider slot in the nosepiece like the **BX 50**.

The **LBX-100** housing holds an analyzer/tintplate or an analyzer, and installs between the observation tube and the **BX 40** stand.

The **LBX-110** analyzer/tintplate (also known as *full wave plate*) is for gout/pseudo gout analysis, or can be used for simple polarization. It offers 90° rotation with a lever and also fits in the slider slot of Olympus model **U-D6RE** and **U-D7RE** nosepieces.

The **LBX-219** 360° rotatable analyzer slider. Fits into **LBX-100** or the slider slot of Olympus model **U-D6RE** and **U-D7RE** nosepieces.

The **LBX-220** 360° rotatable ¼ wave plate slider which fits into **LBX-100** on the slider slot of Olympus model **U-DRE** and **U-D7RE** nosepieces.

Model	Source	Simple Pol		Rotatable Pol		Gout/Pseudo Gout	
		BX40	BX50/CX40	BX40	BX50/CX40	BX40	BX50/CX40
LBX-100 Slider Housing	Leeds	X		X		X	
LBX-110 Tintplate Slider	Leeds					X	X
LBX-219 Rotatable Analyzer	Leeds			X	X		
AQ0634 Blank Slider	Olympus	X	X				
U-P115 Analyzer	Olympus	X	X				
U-P110 Polarizer	Olympus	X	X	X	X	X	X

Leeds Custom Products

Phone: 800-444-5333 • 763-546-8575

Fax: 763-546-4369

custom@leedsmicro.com

www.leedsmicro.com

Dual-View Support Bracket



LBX-151

The **LBX-151** bracket when combined with the Olympus **B-0151** dual-view telescoping support base, allows for support of **Olympus U-DO** dual observation attachment when it is used in a side arm position (instead of front to back).

LBX-B-0151 Telescoping support base provides for a taller support with a height range of 11 5/8" to 20".



LBX-B-0151

Order Product Number

LBX-151	Bracket
LBX-B-0151	Telescoping support base

Leeds Custom Products

Phone: 800-444-5333 • 763-546-8575

Fax: 763-546-4369

custom@leedsmicro.com

www.leedsmicro.com

Low Profile Mount for Tilting Binocular Head



LBX-300

The **LBX-300** low profile mount enables full field viewing when stacked-up accessories are used on the **B-Max** series of Olympus microscopes. It recovers 20mm of the maximum 109mm allowable stack height. This allows for greater flexibility when adding a dualview accessory, polarizing housing or other stack-up accessories - all without loss of viewing area. The low profile mount is ergonomically designed by keeping the microscope height minimal.

The **LBX-300** mount easily attaches to the binocular. This head replaces the mount housing on the Olympus **U-TBI** inclinable binoc head. *(On more recent tilt head models, the cylindrical glass must be removed.)*

The Leeds customization differs for the Olympus **3-U136** tilt head in the following ways:

- Head I.P.D. folds down rather than up
- Diopter remains on left side
- Tilt height range is 25mm lower
- The **3-U136** recovers 17mm more stack height than the **LBX-300** combination



The LBX-300 mounted
on a **U-TBI** head

Order Product Number

LBX-300 Low profile mount

Leeds Custom Products

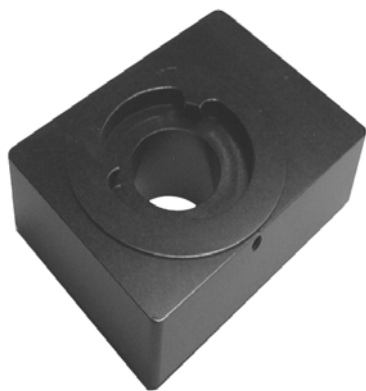
Phone: 800-444-5333 • 763-546-8575

Fax: 763-546-4369

custom@leedsmicro.com

www.leedsmicro.com

Height Adjusting Adapter



LBX-U-EPA

The **LBX-U-EPA** adapter is used when the operator needs the height of the eyepieces raised to a comfortable, relaxed sitting position. The adapter mounts between the microscope stand and observation head and raises height by 30mm with a 1x magnification factor.

If needed, two or three adapters can be stacked to create an ergonomical sitting position. With the **LBX-353** adapter a Olympus **U-DO** can be stacked on top of a **U-MDO**.

The **LBX-301** looks like the **LBX-353**, but with this adapter the Olympus **B-Max** components can be stacked on top of a **BH2** or **CH30** stand.



LBX-353

Order Product Number

LBX-U-EPA	BX/BX2 Height adjusting adapter
LBX-353	Spacer for U-DO to U-MDO
LBX-301	Adapter for BX to BH2/CH30 stand

Leeds Custom Products

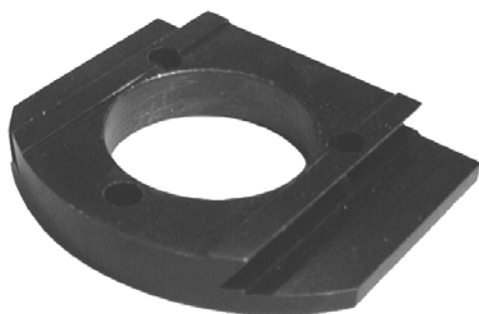
Phone: 800-444-5333 • 763-546-8575

Fax: 763-546-4369

custom@leedsmicro.com

www.leedsmicro.com

BX40 Nosepiece Adapter for the BX50 Stand



LBX-5RE

The **LBX-5RE** adapter allows the 5 place nosepiece from a **BX40** stand to be used on a dovetail style mount on the **BX50** stand.

When cost is an issue, the **LBX-5RE** adapter makes it possible to use a less expensive nosepiece.

Order Product Number

LBX-5RE

Adapter to mount **BX40** nosepiece to the **BX50** stand



Shown mounted on a **BX 40** nosepiece

Leeds Custom Products

Phone: 800-444-5333 • 763-546-8575

Fax: 763-546-4369

custom@leedsmicro.com

www.leedsmicro.com

Nosepiece Adapter

The Leeds nosepiece adapter allows for the use of a six-place or seven-place nosepiece on a **BX40** or **BX45** microscope.

Combining the **LBX-D6RE** nosepiece adapter with the Olympus **U-R156 (U-D6RE)** six-place nosepiece, or the **U-R177 (U-D7RE)** seven-place nosepiece, creates a replacement for the five-place nosepiece - which is the standard nosepiece for the **BX40** and **BX45**. **BX40** frames need to be sent to Leeds Minneapolis office for the **U-R177** Nosepiece.



LBX-D6RE

The **LBX-D6RE** adapter replaces the dovetail mount of the **U-R156** and **U-R177** nosepieces. The adapter also provides an integrated slot for slider accessories - which eliminates the need for a slider housing on the **BX40**. The **LBX-D6RE** adapter also adds a second slot for slider accessories on the **BX45** stand.

The **LBX-6RE** and the **U-R106** should be used on the Olympus **BX45** stand when only one slider is needed.



Shown mounted in **U-R156** nosepiece

Order Product Number

LBX-D6RE	Adapter to mount U-R156 & U-R177 nosepieces to BX40 or BX45
-----------------	---

LBX-6RE	Adapter to mount U-R106 , one slider, to the BX45
----------------	---

Leeds Custom Products

Phone: 800-444-5333 • 763-546-8575

Fax: 763-546-4369

custom@leedsmicro.com

www.leedsmicro.com

Dual Lamphouse Adapter



LBX-DLH

The Dual lamphouse adapter allows for the usage of two light sources on one microscope system.

For use with: Reflected light illuminators. **BX/BX2**
and **IX/IX2** stands.

It is easy to switch from one light source to the other with the turn of a knob. The indicator arrows on the knob shows which light source is selected.

Order Product Number:

LBX-DLH Dual lamphouse adapter

Leeds Custom Products

Phone: 800-444-5333 • 763-546-8575

Fax: 763-546-4369

custom@leedsmicro.com

www.leedsmicro.com

Fiber Optic Lamphouse Adapter



LBX-FOMET

The **LBX-FOMET** allows for the use of fiber optic type lighting with reflected light illuminators on the **BX/BX2** and **IX/IX2** stands.



LPI-U-UCLH
collector lens
(not included)

Order Product Number:

LBX-FOMET Fiber optic lamphouse adapter

*(The adapter is designed for a fiber optic bundle with a ferrule diameter of .393" x 1 1/4" length. The adapter requires usage of the **LPI-U-UCLH** collector lens assembly).*

LPI-U-UCLH Collector lens assembly

Hybrid Stand

The Leeds **LBX-HYBRID** hybrid stand

The Leeds **LBX-HYBRID** hybrid stand has 18" of travel in the Z-axis, which is all done on ball bearing sleeves with counter balanced springs. This design allows for ease in moving the microscope components out of the way for loading or unloading specimens, or just positioning for different height objects - such as whole animals or metallurgical samples. The **LBX-HYBRID** also has an adjustable stop for returning the microscope back to a predetermined position after loading a specimen.

The **LBX-HYBRID** stand is designed to be used with Olympus items: **BXFM-F** focus module, **BXFM-ILH** mount and any of the **BX2** reflected light brightfield/darkfield and fluorescence illuminators.

The **LBX-HYBRID-RSM** mount is designed for using a reflected light stage on the **LBX-HYBRID** stand.

The **LBX-HYBRID-TSM** module is to be used with the **BX2** condensers and transmitted light stages on the **LBX-HYBRID** stand. This module is a Koehler transmitted light illumination system that requires the use of a **BX2** lamphouse and an external power supply. It can also be used with a fiber optic light system.

The **LBX-HYBRID-SZX** mount allows for the use of the **SZX** stereoscope and **SZX-FO/FOF** focus unit to be used with the **LBX-HYBRID** stand.

The combination of the hybrid stand and the many Olympus modular components make for a versatile microscope for viewing a variety of size of specimens.

Order Product Number

LBX-HYBRID	Hybrid stand with 18" Z-axis range
LBX-HYBRID-RSM	Reflected light stage mount
LBX-HYBRID-TSM	Transmitted light stage module
LBX-HYBRID-SZX	Mount for SZX and SZX-FO/FOF focus unit

Leeds Custom Products

Phone: 800-444-5333 • 763-546-8575

Fax: 763-546-4369

custom@leedsmicro.com

www.leedsmicro.com

Single Objective Nosepiece



LMN-NEO



LBX-RMS



LBX-NEO

The Leeds single objective nosepiece adapters provide an option when only a single objective is needed on a **BH2** or **BX/BX2** series microscope. They replace the multiple place nosepiece normally used.

They are available for RMS or NEO thread and installation is simple: the adapters are designed to slide into the nosepiece dovetail of the **BH2** or **BX/BX2** series microscope stand.

Order Product Number

LMN-RMS	RMS standard thread for BH2
LMN-NEO	NEO thread for BH2
LBX-RMS	RMS standard thread for BX/BX2
LBX-NEO	NEO Thread for BX/BX2

Leeds Custom Products

Phone: 800-444-5333 • 763-546-8575

Fax: 763-546-4369

custom@leedsmicro.com

www.leedsmicro.com

Extension Handle for Swing-Out Condenser



LMA-001

The **LMA-001** simple extension handle makes it easier to reach and operate the swing-out condenser knob located underneath the stage.

The **LMA-001** extension handle fits the swing-out type condenser on the **BH2, BX/BX2** stand.



An LMA-001 mounted on a condenser on a BX41 stand

Order Product Number

LMA-001	Condenser extension handle
---------	----------------------------



An LMA-001 mounted on condenser

Parfocusing Shim Set



RMS Size Shims

The Leeds parfocal shim set can aid in bringing a set of objectives into parfocality on a microscope.

The brass or stainless steel shims fit over the RMS or NEO thread of the objective.

Each shim set contains ten each of seven different thicknesses of shims. Thicknesses are (in inches): .001, .002, .003, .004, .005, .007, .010.

Available for RMS or NEO thread size.



NEO Size Shims

Order Product Number

SHM-RMS	Set of 70 shims for RMS size thread
SHM-NEO	Set of 70 shims for NEO size thread

Separately for refill or extras:

SHM0000-S	Single shim for RMS size thread
SHM0000-L	Single shim for NEO size thread

(specify thickness desired with part number)

Leeds Custom Products

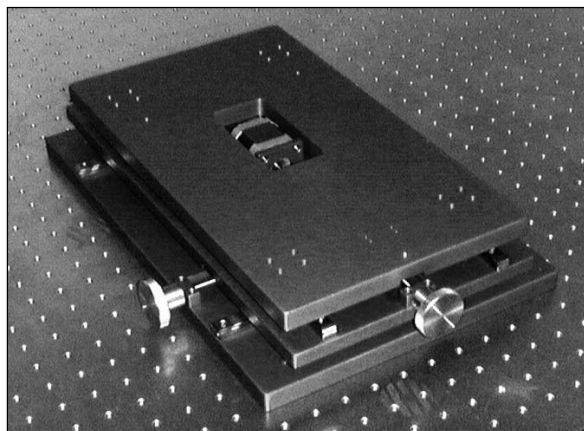
Phone: 800-444-5333 • 763-546-8575

Fax: 763-546-4369

custom@leedsmicro.com

www.leedsmicro.com

2"x3" Translation Base



LPI-WI-XYM2 2x3, X-Y translation base

The **LPI-WI-XYM2** 2"x3", X-Y translation base allows the movement of the microscope frame without moving the specimen on electrodes. Useful for multiple patch clamping experiments.

Can be mounted to any breadboard with a 1/4-20 x 1" mounting hole pattern. **9 1/2"x 16" footprint.**

Order Product Number

LPI-WI-XYM2	2x3, X-Y translation base for BX51WIF.
--------------------	--

LPI-WI-XYM2MOT	Motorized 2x2, X-Y translation base for BX51WIF.
-----------------------	--

560-HP1PC1	PCI controller card
-------------------	---------------------

Motorized model requires 560-HP1PC1 PCI controller card and computer.

Leeds Custom Products

Phone: 800-444-5333 • 763-546-8575

Fax: 763-546-4369

custom@leedsmicro.com

www.leedsmicro.com

1" Extension Tube for the U-IT134



LPI-U-IT134 Pictured on a BX41

The LPI-U-IT134 1" extension tube, when added to the U-IT134 side camera port, will allow for more clearance for a larger body camera.



LPI-U-IT134



Order Product Number

LPI-U-IT134	1" Extension tube for U-IT134 side camera port
-------------	--

5 Position Auxiliary Filter Wheel for the BX/BX2 and IX/IX2

The **LBX-102T** filter turret allows for up to 5 filters, 25mm or 32mm diameter, to be rotated into the optical raypath on any **BX/BX2** or **IX/IX2** microscope frame. It mounts under the observation tube and adds 18mm to the microscope stack height.

**LBX-102T**

25mm adapter rings included

**BX51WI**

Order Product Number

LBX-102T	5 Position auxiliary filter wheel for the IX and BX.
-----------------	--

1X C-Mount Adapters



U-V111

1x camera adapter with no lens -
requires camera mount



U-V311

Olympus C-mount camera adapter



LPI-1XCS25

The **LPI-1XCS25** 1X C-mount adapter enables the use of a **CS25** series Uniblitz shutter in the camera's raypath.



LPI-U-V311SL

The **LPI-U-V311SL** 1X C-mount adapter with slider allows for a filter to be inserted into the camera's raypath. Adding a filter in this position when in the camera's raypath will affect parfocality.



LPI-CTR1X

The **LPI-CTR1X** centerable 1x C-mount adapter provides for a greater range of adjustment when centering a camera.

Leeds Custom Products

Phone: 800-444-5333 • 763-546-8575

Fax: 763-546-4369

custom@leedsmicro.com

www.leedsmicro.com

Dual Photo Port Adapter

The **LPI-DTRU** Dual Photo Port Adapter allows for two cameras to be used without having to remove one and install another. This photo adapter has three light paths: 100% light for the **3-U137** binocular observation tube or 20% for the binocular observation tube, and 80% for the right photo port or 80% for the left photo port.



LPI-DTRU

Order Product Number

LPI-DTRU Dual photo port

LPI-DTRU pictured on a **BX41** with a **OLY-200** and a **DP-70**.

Leeds Custom Products

Phone: 800-444-5333 • 763-546-8575

Fax: 763-546-4369

custom@leedsmicro.com

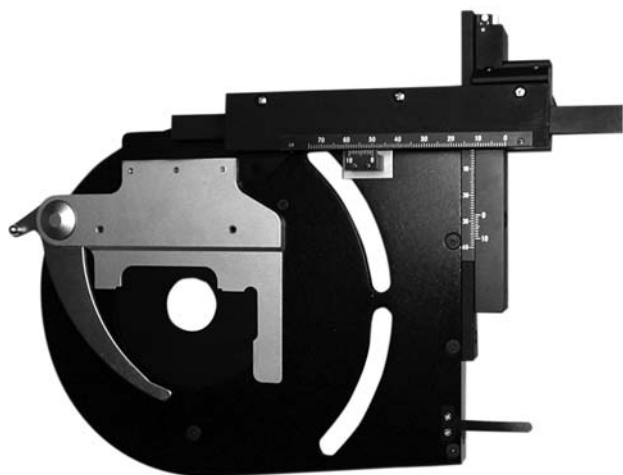
www.leedsmicro.com

240° Circular Pol Stage

The LPI-SRGLC low control mechanical stage is for the Olympus SRG2 circular rotating centerable pol stage. The LPI-SRGLC has 240° of rotation and offers greater ergonomics when attached to the Olympus SRG2 stage.



LPI-SRGLC on a BX41



LPI-SRGLC

Order Product Number

LPI-SRGLC 240° low control mechanical circular pol stage

Leeds Custom Products

Phone: 800-444-5333 • 763-546-8575

Fax: 763-546-4369

custom@leedsmicro.com

www.leedsmicro.com

Thread Adapter



LPI-M34-M25

The **LPI-M34-M25** thread adapter allows for the **1-UB947** or **1-UB950** 2X and 4X macro objectives to fit the **U-R1002 WI-SNPXLU** single position nosepiece .

Order Product Number

LPI-M34-M25 Thread Adapter - M34 to M25

Leeds Custom Products

Phone: 800-444-5333 • 763-546-8575

Fax: 763-546-4369

custom@leedsmicro.com

www.leedsmicro.com

Glide Stage for the BX/BX2

The LPI-BX2GLDE Glide Stage allows for the positioning of the specimen by hand without the use of XY controls.



LPI-BX2GLDE Stage shown on a Olympus BX41



LPI-BX2GLDE Glide Stage



LPI-BX2GLDE-W

White Ceramic Coated Glide Stage

Order Product Number

LPI-BX2GLDE	Glide Stage for BX/BX2 Frames
LPI-BX2GLDE-W	Glide Stage for BX/BX2 Frames- White Ceramic Coated

Leeds Custom Products

Phone: 800-444-5333 • 763-546-8575

Fax: 763-546-4369

custom@leedsmicro.com

www.leedsmicro.com

5-UL1035M Socket With Reflector



5-UL1035M on the Olympus BX41



5-UL1035M

The 5-UL1035M allows for 10% more light to be reflected to the specimen.

Order Product Number

5-UL1035M U-LS30-4 - With Socket Reflector

Leeds Custom Products

Phone: 800-444-5333 • 763-546-8575

Fax: 763-546-4369

custom@leedsmicro.com

www.leedsmicro.com

LCT-UPOL-SL Condenser with Polarizer on Slider



The LCT-UPOL-SL allows for a quick removal of the polarizer unit from the transmitted light raypath, which increases light intensity by 2/3 and extending the life of the polarizer (the 6-U310 is included with the LCT-UPOL-SL).

Order Product Number

LCT-UPOL-SL	6-U310 Condenser and Slider Modification
-------------	--

Leeds Custom Products

Phone: 800-444-5333 • 763-546-8575

Fax: 763-546-4369

custom@leedsmicro.com

www.leedsmicro.com

Thread Adapter - M34 to RMS



LPI-M34-RMS

The **LPI-M34-RMS** adapter allows for a second objective with RMS thread to be mounted in the M34 thread position of **Olympus U-R175 U-SLRE** slider nosepiece. The **LPI-M34-RMS** adapter can be adjusted for parfocality.

Order Product Number

LPI-M34-RMS

Thread Adapter - M34 to RMS

Leeds Custom Products

Phone: 800-444-5333 • 763-546-8575

Fax: 763-546-4369

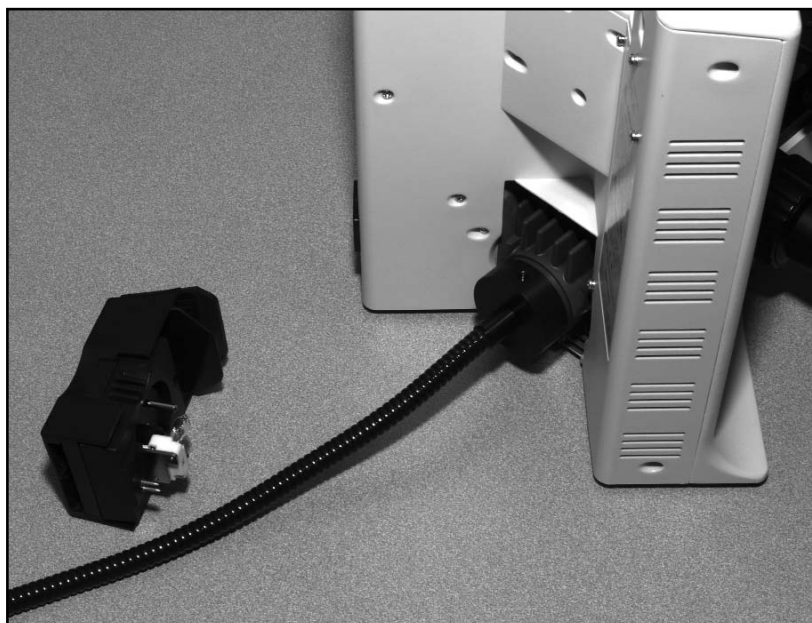
custom@leedsmicro.com

www.leedsmicro.com

BH2/BX Adapter for Flexible Fiber Lightguide Adapter



5-S119FO



5-S119FO pictured on the Olympus BX41

The Leeds **5-S119FO** BH2/BX adapter for flexible fiber lightguides, allows for the Schott ACE series fiber light sources to be used in place of the Olympus Lamphouse on the **BX and BH** series of microscopes.

Order Product Number

5-S119FO	BH2/BX Adapter for Flexible Fiber Lightguide Adapter
----------	--

Leeds Custom Products
Phone: 800-444-5333 • 763-546-8575
Fax: 763-546-4369
custom@leedsmicro.com
www.leedsmicro.com

BX White Ceramic Coated Fixed Stage



LPI-BX2FXW



LPI-BX2FXW pictured on the Olympus BX41



Also available in black

The Leeds **LPI-BX2FXW** Stage is mounted in a fixed position and coated with a durable white ceramic for easier viewing and movement of the slide on the stage by hand.

The round compact design of the stage has beveled edges for a more comfortable hand placement.

Order Product Number

LPI-BX2FXW BX2 White Ceramic Coated Fixed Stage

Leeds Custom Products

Phone: 800-444-5333 • 763-546-8575

Fax: 763-546-4369

custom@leedsmicro.com

www.leedsmicro.com

Extension Handle for Swing-Out Condenser for the BX45



The LBX-001-2 simple extension handle makes it easier to reach and operate the swing-out condenser knob located underneath the stage.

The LBX-001-2 extension handle fits the swing-out type condenser on the BX45 stand.



The LBX-001 extension handle

Order Product Number

LBX-001-2

Condenser flip-top lever
extension for the BX45

Leeds Custom Products

Phone: 800-444-5333 • 763-546-8575

Fax: 763-546-4369

custom@leedsmicro.com

www.leedsmicro.com

Dual View Support Stand Offset Mounting Bracket



LBX-152 with bolt

The Leeds **LPI-152** Dual View Support Stand Offset Mounting Bracket allows for four inches of 360° movement for better placement of the support stand base on the work surface.

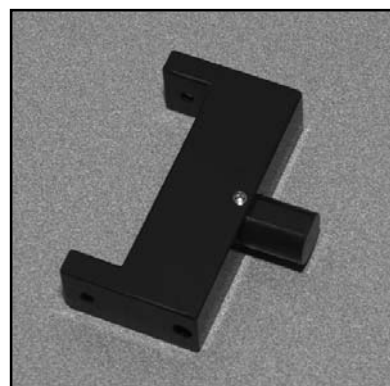
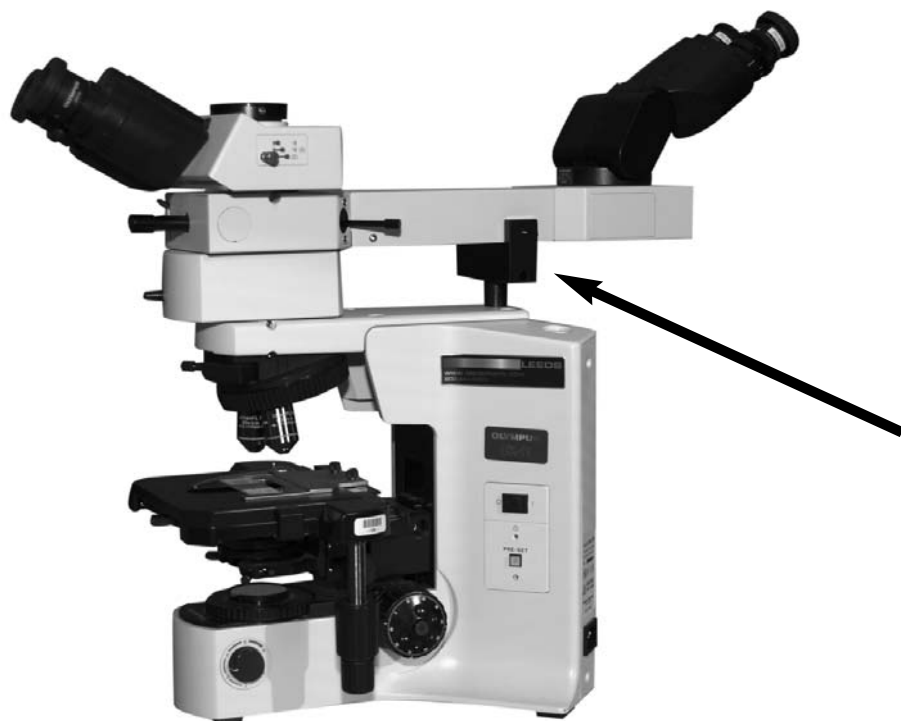


LBX-152 pictured on the Leeds LBX-B-0151

Order Product Number

LBX-152	Dual View Support Stand Offset Mounting Bracket
---------	---

Adjustable Support Bracket for the UDO



LBX-155

LBX-155 shown on the Olympus BX41 with U-IT110 magnification changer

The **LBX-155** attaches to the **Olympus UDO** and allows for 32mm -50mm of adjustment support when a intermitted piece is placed before the **UDO**.

The **LBX-155** protects the dovetail from damage and eliminates vibration for second the viewer.

Order Product Number

LBX-155 Adjustable Support Bracket for the UDO

Leeds Custom Products

Phone: 800-444-5333 • 763-546-8575

Fax: 763-546-4369

custom@leedsmicro.com

www.leedsmicro.com

Stereo

Leeds' Custom Boom Stand Components for Stereo Microscopes



LMA-036A



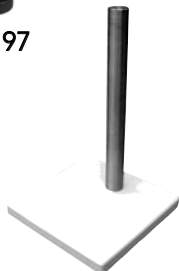
LMS-151



LMS-150



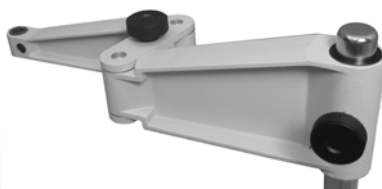
LMS-197



LMS-200



LMS-198



LMS-300



LMS-201

For a complete boom stand you will need:

- 1) Column assembly
- 2) Drop prevention collar
- 3) Arm assembly

- LMA-036A** Drop prevention collar
- LMS-150** Heavy boom base & 24" column (2" x 10" x 16", 105 lbs total weight)
- LMS-151** Horizontal arm assembly
- LMS-197** 16" Vertical column with table clamp
- LMS-197-24** 24" Vertical column with table clamp
- LMS-198** 14" Vertical column with flange mount
- LMS-198-24** 24" Vertical column with flange mount
- LMS-200** Boom base & 14" column
(same as used on the LMS-100 complete stand)
- LMS-200-24** Boom stand base & 24" column
- LMS-201** Ball bearing boom arm provides for smooth easy 21" horizontal movement along arm. It is designed to hold a bonder style focus mount with a 5/8" diameter post mount.
- LMS-300** Articulating boom arm has a double jointed fold away design to save space at the workstation and does not have a rear protrusion like the rigid boom arms have. It is made to fit any of the column assemblies on this page. When measured from the center of column to center of "field of view" of an Olympus **SZ** stereoscope, the horizontal arm has a 24 1/2" reach. This arm is designed to hold a bonder style focus mount with a 5/8" diameter post mount.

Leeds Custom Products

Phone: 800-444-5333 • 763-546-8575

Fax: 763-546-4369

custom@leedsmicro.com

www.leedsmicro.com

Inclination Joint for Olympus Bonder Focus Mount



LMA-058

Unlike the stock **Olympus S-02662** and **S-0266** focus mounts, which drops into the post mount of the boom arm, the modified Leed's **LMA-058** inclination joint is mounted from the underside of the boom arm and is held securely in place with the provided drop prevention knob. The **LMA-058** inclination joint enables the stereoscope to be held securely at an angle which can be moved by the operator to various tilted positions and will stay in position until manually moved. Tension of tilt movement can be adjusted or locked with a hex wrench. This inclination joint replaces the standard knuckle joint of the **S-02662** and **S-0266**.



S-0266M shown

Order Product Number

LMA-058	Inclination joint kit
S-0266M	Olympus bonder arm W/LMA-058 installed
S-02662M	W/LMA-058 Installed

Leeds Custom Products

Phone: 800-444-5333 • 763-546-8575

Fax: 763-546-4369

custom@leedsmicro.com

www.leedsmicro.com

Adapter for S-0129A Transmitted Light Base



LMA-059 Shown

The **LMA-059** adapter allows a Nicholas style illuminator lamphouse to be used with the Olympus **S-0129A** transmitted light base. The adapter pops into the illuminator mounting hole in the back of the **S-0129A** base.

The **LMA-059M-5/8ID** adapter allows for a fiber optic bundle with a 5/8" diameter spot lens to be used with the Olympus **S-0129A** transmitted light base.

Order Product Number

LMA-059	Adapter for Nicholas to S-0129A base
LMA-059M-5/8ID	Adapter for F.O. light guide w/spot lens to S-0129A base

High Clearance Ringlight



The Leeds fiber optic ringlight maintains a full 4.2" working distance when mounted on an Olympus **SZ** and **SZ2** model stereoscopes. The narrow side profile doesn't interfere with hand or tool movement.

The Leeds ring light provides an even diffusion of light without hot spots or holes. The fiber optic bundle, which is available in various lengths, exits upward to stay out of the field of motion.

The ringlight mounts quickly with a screw-on coupler, and your choice of ferrule (please note that all three parts are necessary, and are ordered via separate part numbers).

A polarizer/analyzer is an available option.



Order Product Number

LRL-410 High clearance ringlight - 4-ft length
LMA-060 SZ thread adapter

Choose a ferrule to fit your light source: (others are also available, call for info).

LMA-061 Ferrule for Dolan Jenner 180
LMA-063 Ferrule for Fostec
LMA-065 Ferrule for Olympus
LMA-066 Ferrule for Chiu
LPI-112 Polarizer/analyzer attachment



LPI-112

Leeds Custom Products

Phone: 800-444-5333 • 763-546-8575

Fax: 763-546-4369

custom@leedsmicro.com

www.leedsmicro.com

Complete Boom Stereoscope Stand



LMS-100

The **LMS-100** is used where wide horizontal and/or tall vertical viewing is needed. The **LMS-100** is weighed and rigid with no need for a counter balance. The vertical column is 15 $\frac{3}{4}$ " tall and is made of solid, nickel plated steel. When measured from the center of column to center of the field of view of an Olympus **SZ** stereoscope, the horizontal arm has a 22 $\frac{3}{4}$ " reach. The arm has a flat surface to prevent accidental rotation of the stereoscope body, and a drop prevention collar secures the vertical height of the stereoscope above the work surface - eliminating any accidents if you swing the horizontal arm to another position. The arm is designed to hold a bonder style focus mount with a $\frac{5}{8}$ " diameter post mount. The base is 1" x 10" x 10" steel.

To configure a stand that will meet your specific needs, please check our line of modular components described on page S-1.

Leeds Custom Products

Phone: 800-444-5333 • 763-546-8575

Fax: 763-546-4369

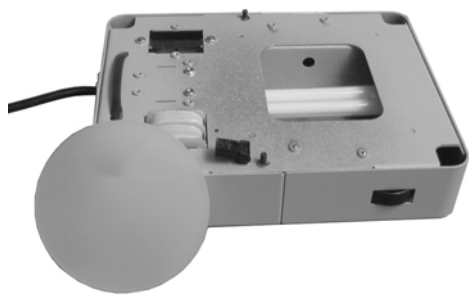
custom@leedsmicro.com

www.leedsmicro.com

Transmitted Light Base for SZ



LMS-225R base shown mounted on **S-0128** stand with S-0115 reflected illuminator attached. The illuminator base comes with a stage glass and diaphragm.



LMS-226 base contains a 7-watt fluorescent light source, as well as power for reflected light. The base comes with a diffusing stage plate.

The **LMS-225R** self-contained tuck-under base for the Olympus **S-0128** stereo stand clears up benchtop clutter and storage problems. It's low-profile adds only 1¾" to the height of the stand.

The base is a dual power supply for two light sources- 6-volt/20watt internal transmitted, and 6-volt/15-watt reflected illumination (designed for Olympus **S-0115** incident light illuminator). Both sources can be used at the same time and have separate level control switches.

The **LMS-225R** uses a halogen light source that employs a rheostat for intensity control of both transmitted and reflected light. The mirror unit can be tilted to effect changes in lighting, which can fill the field with light as low as a .9x zoom setting.

The **LMS-226** unit fluorescent type light, mounted in the base for transmitted illumination, it minimizes shadows (note that there is no mirror in this model). The base mounts under the **S-0128** stand with two screws and can be easily installed with a 3mm ball hex wrench. A removable cover makes replacing the bulb easy.

Order Product Number

LMS-225R	Transmitted light base (6v 20w halogen)
LMS-226	7 watt fluorescent transmitted light base
S-0115	Olympus LSGA ; low voltage incident light illuminator
S-0115B	Thumb screw to attach LSGA illuminator to S-0128 stand

Leeds Custom Products

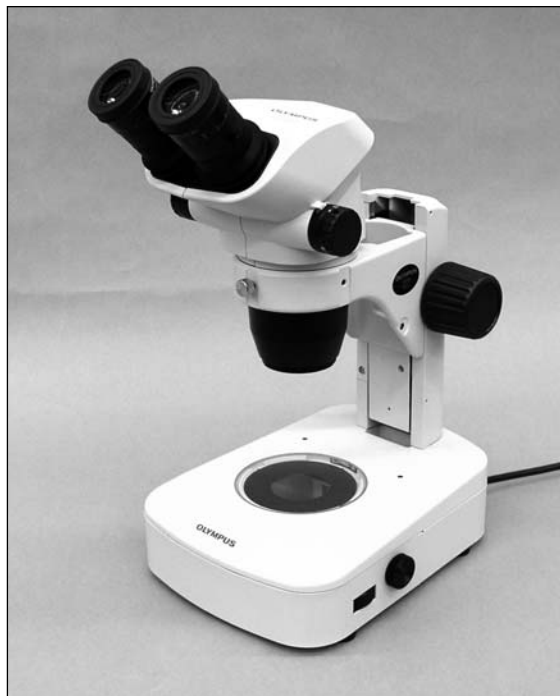
Phone: 800-444-5333 • 763-546-8575

Fax: 763-546-4369

custom@leedsmicro.com

www.leedsmicro.com

Transmitted Light Base



LMS-225W base shown mounted on S-01282



LMS-225W base comes with a clear glass stage plate and diaphragm

The **LMS-225W** self-contained tuck-under base for the Olympus **S-01282** stereo stand clears up benchtop clutter and storage problems. Its low-profile adds only 1 ¾" to the height of the stand.

The base has a dual power supply for two light sources- 6-volt/20 watt internal transmitted, and 6-volt/15-watt reflected illumination (designed for **Olympus S-0115** incident light illuminator). Both sources can be used at the same time and have their own light level control switches.

The **LMS-225W** uses halogen light and employs a rheostat for intensity control of both transmitted and reflected light. The mirror can be tilted to affect changes in lighting. It fills the field with light as low as .8x zoom setting.

The **LMS-226W** fluorescent type light mounts in the base for transmitted illumination, which minimizes shadows. (Note: there is no mirror in this model.)

The base attaches under the **S-01282** stand with three screws, and can be easily installed with a #1 crosspoint screwdriver. A removable cover makes replacing the bulb easy.

Order Product Number

LMS-225W	Transmitted light base (6v 20w halogen).
LMS-226W	7 watt fluorescent transmitted light base.
S-0115	Olympus LSGA; low voltage incident light illuminator.
S-0115B	Thumb screw to attach LSGA illuminator to S-01282 stand.

Leeds Custom Products

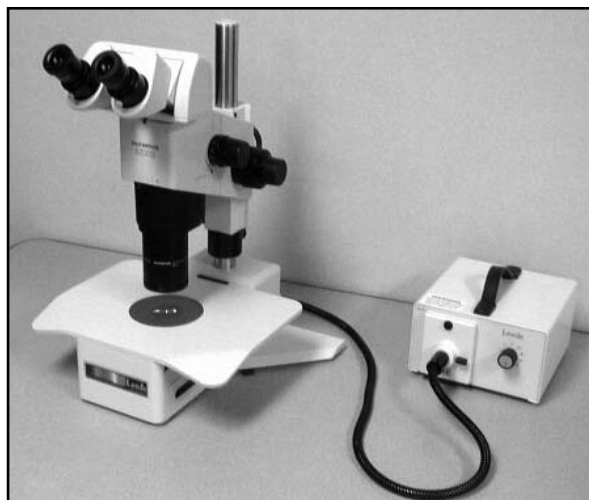
Phone: 800-444-5333 • 763-546-8575

Fax: 763-546-4369

custom@leedsmicro.com

www.leedsmicro.com

Bright Field/Dark Field Transmitted Base with Sliding Mirror



LMS-230 bright field/dark field base with sliding mirror

The Olympus SZX stereo microscope shown on the Leeds LMS-230 bright field/dark field base with sliding mirror for oblique lighting. Powered by 150W Fiber optic light.

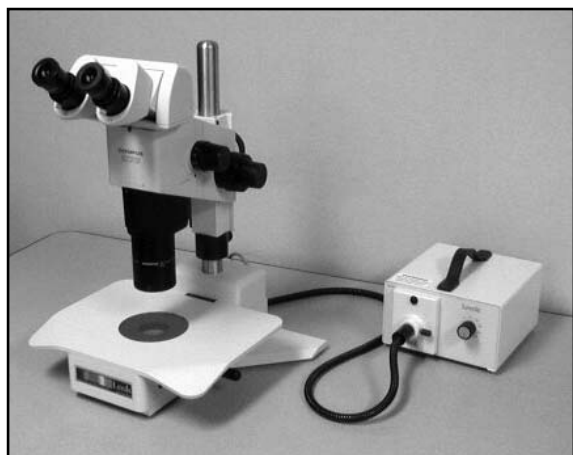
- Selection done by slider
- Stage glass included

Order Product Number

LMS-230	BF/DF/oblique mirror base
LMS-232	32mm post mount
S-0204	400mm pillar
LMS-SZX-R	Drop prevention collar
AO8031.40R	Fostec light guide
A20500	Fostec light source

Can also be used with SZ/SZ2 series stereo microscopes.

Bright Field Transmitted Base with Sliding Mirror



LMS-235 bright field base with sliding mirror.

The Olympus SZX stereo microscope is shown on the Leeds **LMS-235** bright field base with sliding mirror for oblique lighting. Powered by 150W fiber optic light.

- Selection done by slider
- Stage glass included

Order Product Number

LMS-235	BF/Oblique mirror base
LMS-232	32mm post mount
S-0204	400mm pillar
LMS-SZX-R	Drop prevention collar
AO8031.40	Fostec light guide
A20500	Fostec light source

Can also be used with SZ/SZ2 series stereo microscopes.

Leeds Custom Products

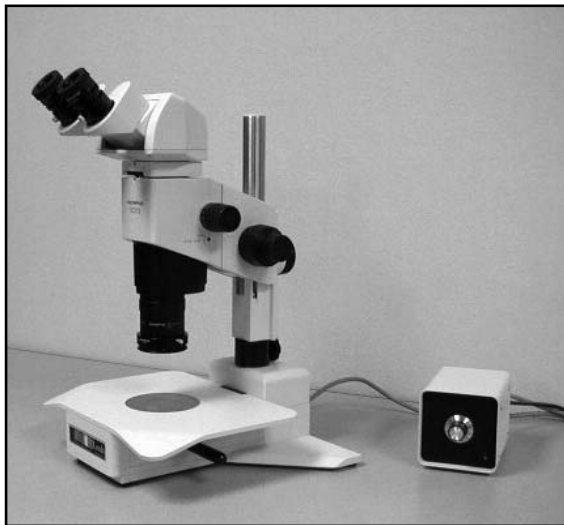
Phone: 800-444-5333 • 763-546-8575

Fax: 763-546-4369

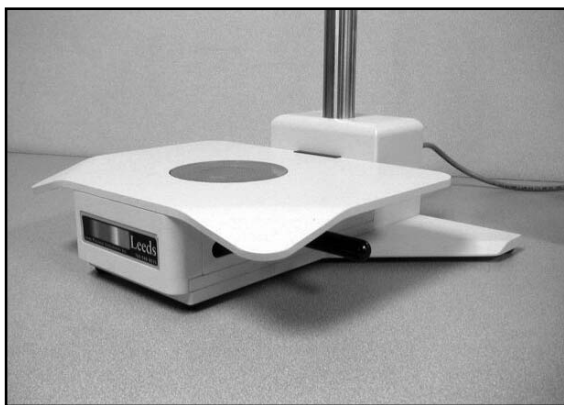
custom@leedsmicro.com

www.leedsmicro.com

12 Volt/50 Watt Transillumination Base - Bright Field/Dark Field



LMS-340 bright field/dark field base shown with SZX stereo body



LMS-340 bright field/dark field 12 volt/ 50 watt transillumination base



LMS-341
12V/50W variable
power supply



The Olympus SZX stereo microscope shown on the Leeds **LMS-340** bright field/dark field, 12 volt/ 50 watt transillumination base. Bright field/dark field selection is done by a slide control. The glass stage plate is included.

Order Product Number

LMS-340	BF/DF transillumination base
LMS-232	32mm post mount
S-0204	400mm pillar
LMS-SZX-R	Drop prevention collar
LMS-341	12V/50W variable power supply

Can also be used with SZ/SZ2 series stereo microscopes.

Leeds Custom Products

Phone: 800-444-5333 • 763-546-8575

Fax: 763-546-4369

custom@leedsmicro.com

www.leedsmicro.com

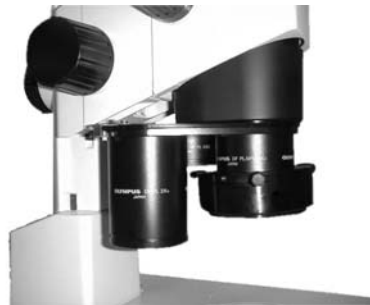
Three Place Nosepiece for SZX Stereos



The SZX 12 with LMS-SZX-3RE-L with ring light

The Leeds three-place nosepiece is designed for use on the **SZX9** and **SZX12** stereo microscope. This nosepiece design allows for the mounting of three different objectives to the **SZX** stereo body. The **LMS-SZX-3RE** and **LMS-SZX-3RE-M** are the smaller versions of this nosepiece design and do not allow for the use of a fiber optic ringlight. The **LMS-SZX-3RE-L** and **LMS-SZX-3RE-LM** are the larger versions of this nosepiece design and do allow for the use of a fiber optic ringlight. The **LMS-SZX-3RE-M** and **LMS-SZX-3RE-LM** models have detents for positioning the objective for macro use.

*(The **LMS-SZX-3RE-L** and **LMS-SZX-3RE-LM** are a larger version nosepieces that do limit the focus range of the **SZX-FO/SZX-FOF**).*



The LMS-SZX-3RE-L with ring light



LMS-SZX-3RE-L

Order Product Number

LMS-SZX-3RE	Three place nosepiece for SZX-small
LMS-SZX-3RE-M	Three place nosepiece for SZX-small with macro positions
LMS-SZX-3RE-L	Three place nosepiece for SZX-large
LMS-SZX-3RE-LM	Three place nosepiece for SZX-large with macro positions

Leeds Custom Products

Phone: 800-444-5333 • 763-546-8575

Fax: 763-546-4369

custom@leedsmicro.com

www.leedsmicro.com

SZX Stereoscope Accessories



LMS-SZXBIFO

Adapter is for mounting a fiber optic 8520 bifurcated light guide to an **SZX** stand. It fits between the pillar mount and focusing assembly.

LMS-SZXBP

shown mounted on an **LMS-300** articulated arm with an **SZX** stereo body.



LMS-SZXBIFO

shown mounted on an **SZX** stand.



LMS-SZXBP

Adapter is for mounting an **SZX** stereo body to a boom stand with a 5/8" diameter bonder style mount. It fits in the pillar mount of the **SZX** focusing assembly.



Order Product Number

LMS-SZXBIFO

Adapter for 8520 to SZX stand

LMS-SZXBP

SZX Bonder Post Mount

Leeds Custom Products

Phone: 800-444-5333 • 763-546-8575

Fax: 763-546-4369

custom@leedsmicro.com

www.leedsmicro.com

Off Axis Light Attachment



LMS-SZX-OAX on a SZX stereo microscope

The **LMS-SZX-OAX** off axis light attachment is designed for use with the **SZX** stereo microscope and provides near vertical illumination for examining PC boards, cracks, crevices and holes. It works throughout the full zoom range and can be used at a working distance of 70 to 200mm. The compact illuminator attaches to the objective body with two, 3mm drive set screws.

Order Product Number

LMS-SZX-OAX	Off axis light attachment for the SZX stereo microscope
AO8025.40	Fiber optic light guide
A20500	ACE 150 watt fiber optic light source



LMS-SZX-OAX

Leeds Custom Products

Phone: 800-444-5333 • 763-546-8575

Fax: 763-546-4369

custom@leedsmicro.com

www.leedsmicro.com

Weighted Base for use with Existing Tabletop Work Surface



LPI-KSTAND shown with SZ stereo body

- Heavy steel base. Adds 4 $\frac{3}{4}$ " Height adjustment range to the range of bonder arm selected.
- Can be used with Olympus S-0266, S-02662 or any bonder style microscope arm.

Order Product Number

LPI-KSTAND	K Stand base for bonder arm
------------	-----------------------------



LPI-KSTAND K Stand base for bonder arm

1X Stereo Video Coupler



LSZ-1XCMT2 1x
video coupler



LSZ-1XCMT2 1x video coupler
shown on a SZ-6145TR stereo
microscope



LSZ-U-SPT PE Tube
for SZ-6145TR

The **LSZ-1XCMT2** 1x video coupler is designed for use on the Olympus SZ-6145TR stereo microscope. It is used when a 2/3" or 1" digital or analog video format is desired. Requires the .5x lens to be removed from the **SZ-6145TR** phototube.

Order Product Number

LSZ-1XCMT2	1X C-Mount for SZ61TR.
LSZ-1XSZ61	Removal of .5X lens (this must be done at Leeds Minneapolis office).

An additional video coupler is available for the **SZ-6145TR**. The **LSZ-U-SPT** photo tube coupler allows for all Olympus components used on the **U-SPT** phototube to be used on the **SZ-6145TR**.

Additional Product Numbers

LSZ-U-SPT	PE Tube for SZ-6145TR.
LSZ-1XSZ61	Removal of .5X lens (this must be done at Leeds Minneapolis office).

Leeds Custom Products

Phone: 800-444-5333 • 763-546-8575

Fax: 763-546-4369

custom@leedsmicro.com

www.leedsmicro.com

Boom Arm Stand with Crank Adjustment



The **LMS-202-HBP** Crank Boom Stand pivots 360° and allows for smooth adjustment of both axes. The height of the boom adjusts with the crank at the side of the bottom block of the stand. The horizontal boom is on ball bearings and allows for smooth operation. Levers lock vertical, pivot and slider positions securely.

The **LMS-202-HBP** is constructed of aluminum and stainless steel, and has an overall height of 24" - with a vertical motion of 19". The horizontal boom is 24" long, and useable travel length is 18". The base is constructed of 1"x10"x10" steel.

Order Product Number

LMS-202-HBP

Crank Boom Stand with Heavy
Base

Leeds Custom Products

Phone: 800-444-5333 • 763-546-8575

Fax: 763-546-4369

custom@leedsmicro.com

www.leedsmicro.com

Etherglow Light Diffuser

The **EGR-410M** allows for diffused light from the **LRL-410** ringlight to evenly illuminate reflective samples. The etherglow light diffuser attachment greatly reduces glare.



EGR-410M on a SZ61



EGR-410M Pictured

Order Product Number

EGR-410M

Etherglow attachment to a
LRL-410 ringlight

Leeds Custom Products

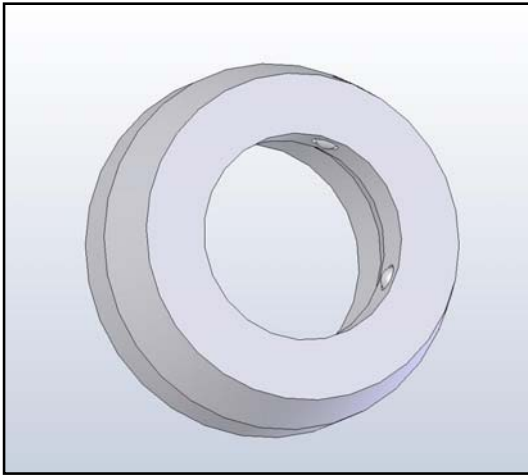
Phone: 800-444-5333 • 763-546-8575

Fax: 763-546-4369

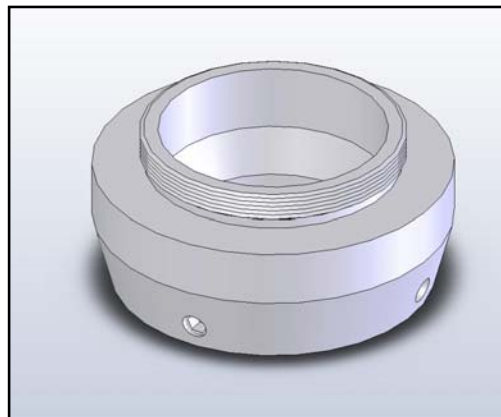
custom@leedsmicro.com

www.leedsmicro.com

1X T-Mount coupler for the SZ-6145TR



LSZ2-1XTMT Bottom View



LSZ2-1XTMT Top View

The **LSZ2-1XTMT** t-mount coupler allows for digital SLR cameras to be used on the SZ-6145TR (requires specific t-mount for the camera being used). Also, removal of .5x lens from **SZ-6145TR** photo port is required.

Order Product Number

LSZ2-1XTMT

1x t-mount for **SZ-6145TR**

LSZ-1XSZ61

Removal of .5X lens in the
SZ6145TR

Leeds Custom Products

Phone: 800-444-5333 • 763-546-8575

Fax: 763-546-4369

custom@leedsmicro.com

www.leedsmicro.com

Face-to-Face Dual View for the SZX



SZX10 with the LPI-SZX-DO



LPI-SZX-DO
Bottom View



LPI-SZX-DO
Top View

*The S-X130 Trinocular
Observation Tube will not
work on the LPI-SZX-DO*

Order Product Number

LPI-SZX-DO Face-to-Face Dual View for the **SZX9**,
SZX10 and **SZX12** (will not work with the
SZX16).

Leeds Custom Products

Phone: 800-444-5333 • 763-546-8575

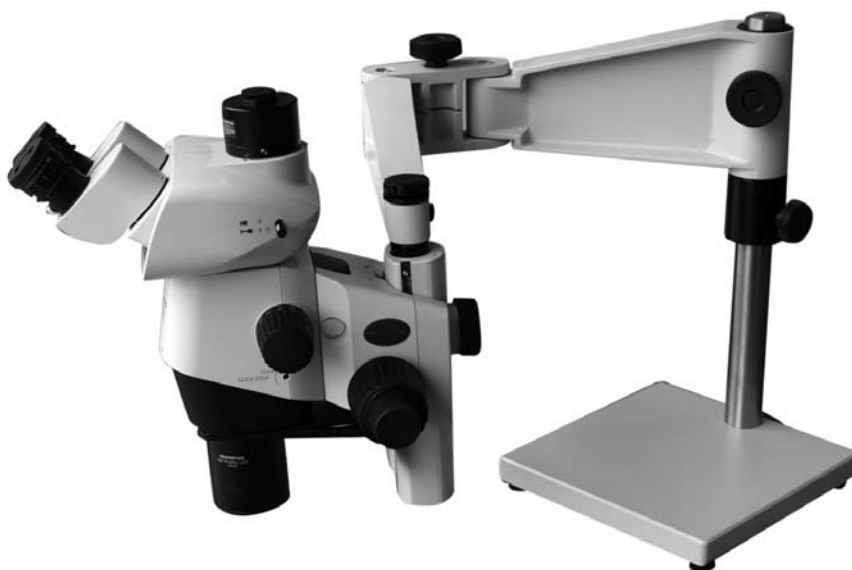
Fax: 763-546-4369

custom@leedsmicro.com

www.leedsmicro.com

LMS-SZX2BP Bonder Post

The **LMS-SZX2BP** bonder post allows for the **SZX2** focusing block to be mounted onto any 5/8 bonder style boomstand.



LMS-SZX2BP

Shown mounted on an **LMS-300** articulated arm with an Olympus **SZX16** stereo body.



LMS-SZX2BP

Order Product Number

LMS-SZX2BP

Bonder Post Mount

Leeds Custom Products

Phone: 800-444-5333 • 763-546-8575

Fax: 763-546-4369

custom@leedsmicro.com

www.leedsmicro.com

Polarizer for SZX2-ILLT LED Base



SZX16 with the SZX2-ILLT
LED Base

The LPI-AN-LED Polarizer for SZX2-ILLT LED Base mounts in the four position turret and allows for transmitted polarizing light applications. Used with SZX2-AN.



LPI-AN-LED Polarizer

Order Product Number

LPI-AN-LED Polarizer for SZX2-ILLT LED Base

Leeds Custom Products

Phone: 800-444-5333 • 763-546-8575

Fax: 763-546-4369

custom@leedsmicro.com

www.leedsmicro.com

Tiltable Stereo Base with Table Clamp

The **LMS-TILT** Base allows for improved ergonomics for extended inspection times. The **LMS-TILT** also allows for multiple users to make tilt angle and height adjustments for easier sample viewing. The tilt base clamps to a table for increased stability and will attach to all Olympus stereomicroscope stands.



LMS-TILT shown with a Olympus SZ61TR and S-01282 stand



LMS-TILT front view

Order Product Number

LMS-TILT Tilting and adjustable base

Leeds Custom Products

Phone: 800-444-5333 • 763-546-8575

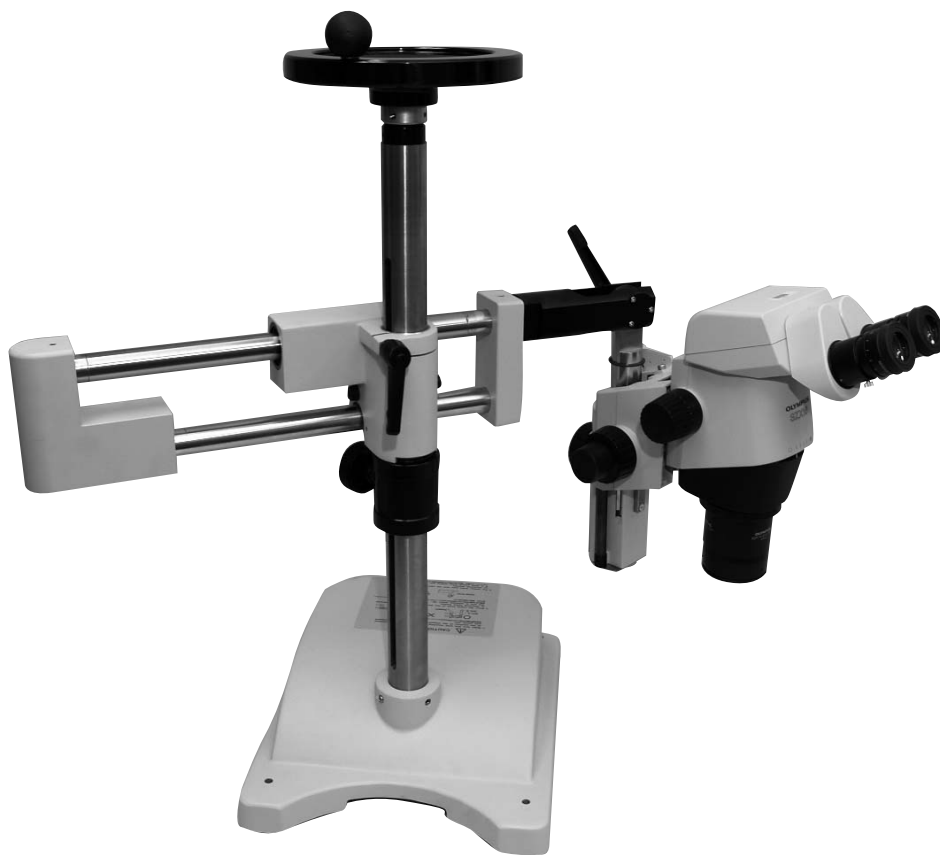
Fax: 763-546-4369

custom@leedsmicro.com

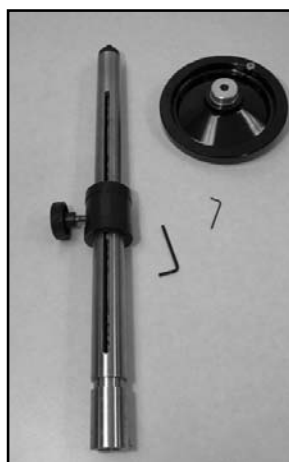
www.leedsmicro.com

Z-Axis Crank Post for Boom Stands

The **LMS-Z-CRK14** Z-Axis crank post can be used as a replacement for the vertical post on the Olympus **STU2** boom stand, or on any of the Leeds boom stand bases. It has a Z-axis range of 14" with a travel speed of 1/8" per revolution of the crank knob. The post and the lead screw drive are stainless steel with two bronze drive nuts. The load capacity of the Z-axis crank mechanism post assembly is rated for 300 lbs.



LMS-Z-CRK14 on the the Olympus STU2 Stand



LMS-Z-CRK14 kit

Order Product Number

LMS-Z-CRK14	Z-Axis Crank Post for Olympus STU2 Boom Stand
LMS-Z-CRK14L	Z-Axis Crank Post for the Leeds Boom Stand Bases

Leeds Custom Products

Phone: 800-444-5333 • 763-546-8575

Fax: 763-546-4369

custom@leedsmicro.com

www.leedsmicro.com

Universal Holders



LPI-UVCHLR



LPI-UVHLR back view

The **LPI-UVCHLR** Universal C-Shaped Holder has 90° of vertical to horizontal positioning range. The 360° rotatable chuck can hold a wire through the chuck that has a diameter of .010" to .170". The **LPI-UVCHLR** can also hold an item as large as 1" diameter in the chuck. The **LPI-UVCHLR** base has the ability to rotate 360° for optimal viewing.



LPI-UVHLR

The **LPI-UVHLR** Universal Holder has a 360° rotatable chuck that can hold a .010" to .170" diameter wire horizontally through the chuck. The **LPI-UVHLR** can also hold an item as large as 1" diameter in the chuck.

Order Product Number

LPI-UVCHLR Universal C-Shaped Holder

LPI-UVHLR Universal Holder

Leeds Custom Products

Phone: 800-444-5333 • 763-546-8575

Fax: 763-546-4369

custom@leedsmicro.com

www.leedsmicro.com

On Axis Lens Mount



LMS-SZX-MAC16 on an Olympus SZX16

The LMS-SZX-MAC10 and LMS-SZX-MAC16 lens mount allows the user to quickly switch the SZX10 or SZX16 from a stereomicroscope, to an on axis system that provides for a macro view usage by matching the center of the objective lens to the right side ray path of zoom lens.

The LMS-SZX-MAC10 and LMS-SZX-MAC16 also eliminates image shift for effective 3D rendering by imaging software.



LMS-SZX-MAC16

Order Product Number

LMS-SZX-MAC10	SZX10 Objective Mount with on Axis Shift
LMS-SZX-MAC16	SZX16 Objective Mount with on Axis Shift

Leeds Custom Products

Phone: 800-444-5333 • 763-546-8575

Fax: 763-546-4369

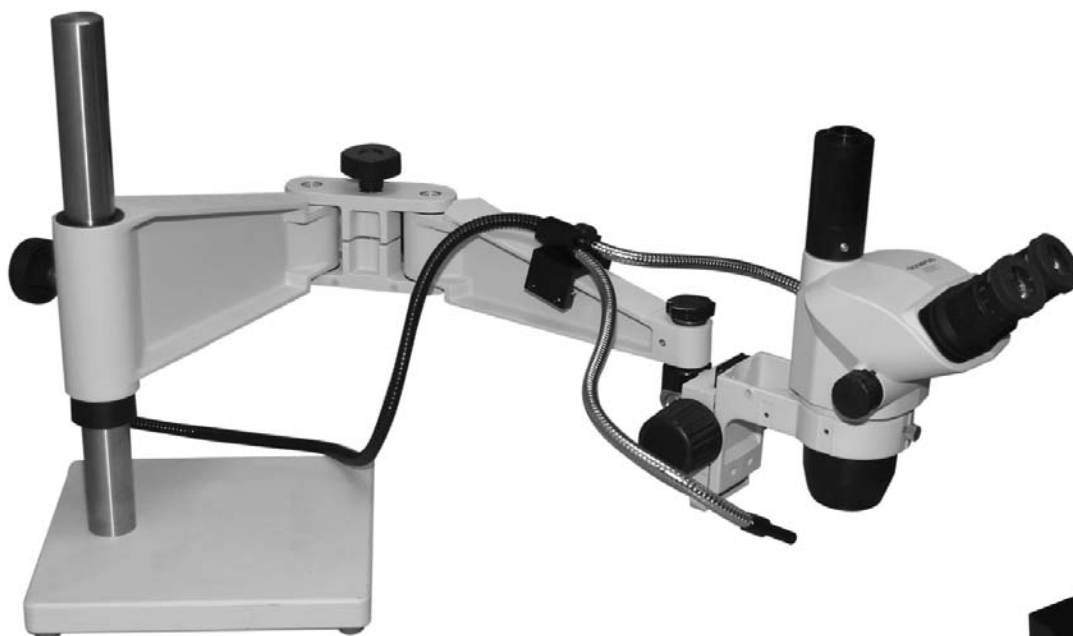
custom@leedsmicro.com

www.leedsmicro.com

Adjustable Mount the for the A08520 to LMS-300

The LMS-300BIFO adjustable mount allows the A08520 Dual Gooseneck to be attached to the LMS-300 Articulating Arm, allowing for better positioning of the light when using the LMS-300 arm.

The LMS-300BIFO can be mounted anywhere along the top, bottom or the end section of the LMS-300 articulating arm.



LMS-300BIFO on an LMS300 Articulating Arm



LMS-300BIFO Mount

Order Product Number

LMS-300BIFO

Mount for A08520 to LMS-300

Leeds Custom Products

Phone: 800-444-5333 • 763-546-8575

Fax: 763-546-4369

custom@leedsmicro.com

www.leedsmicro.com

Custom Breadboard Stands

Leeds' simple breadboard stands have a column with dovetails on all four sides, which allows for accessories like cameras and lighting to be added easily.



The Leeds Custom Products Department can design and built a wide range of custom breadboard stands to meet any of your projects needs.

Please contact Leeds for more information on our complete line of custom breadboard products.

Leeds Custom Products

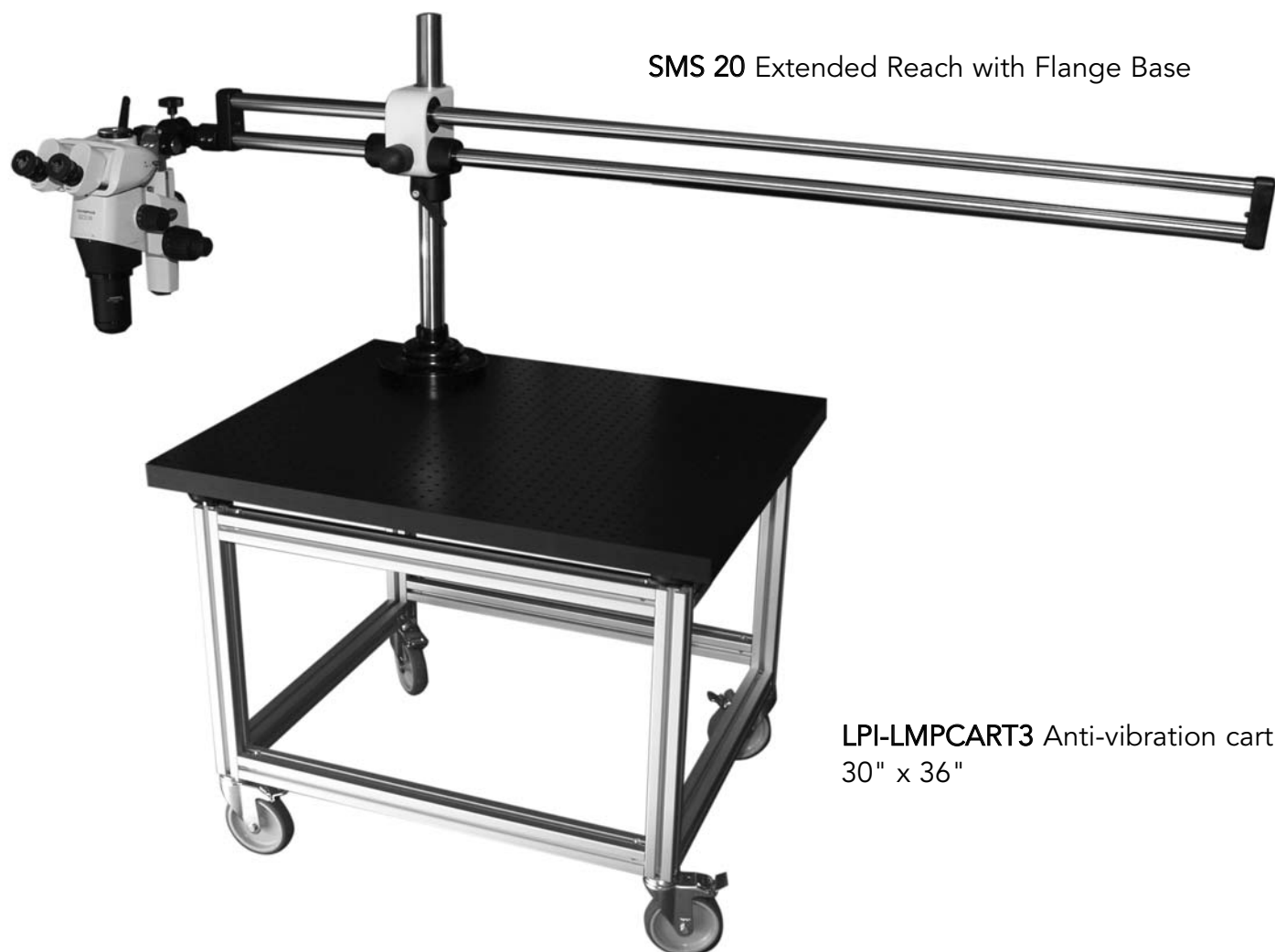
Phone: 800-444-5333 • 763-546-8575

Fax: 763-546-4369

custom@leedsmicro.com

www.leedsmicro.com

Custom Boomstand



SMS 20 Extended Reach with Flange Base

LPI-LMPCART3 Anti-vibration cart
30" x 36"

The Leeds Custom Products Department can design and build a wide range of custom boom stand to meet any of your projects needs.

Please contact Leeds for more information on our complete line of custom boom stand products.

Leeds Custom Products

Phone: 800-444-5333 • 763-546-8575

Fax: 763-546-4369

custom@leedsmicro.com

www.leedsmicro.com

Adjustable Height Stage



The **LMS-700** Adjustable Height Stage Mount has a 1 ½" height adjustment range and advances at ½" per turn of the adjusting ring. The **LMS-700** also includes a **BX/BX2** circular stage mount.

The **LMS-700** has a wide range of base mounts available, please contact Leeds' Custom Department for more information.

Order Product Number

LMS-700 Adjustable Height Stage Mount

Leeds Custom Products

Phone: 800-444-5333 • 763-546-8575

Fax: 763-546-4369

custom@leedsmicro.com

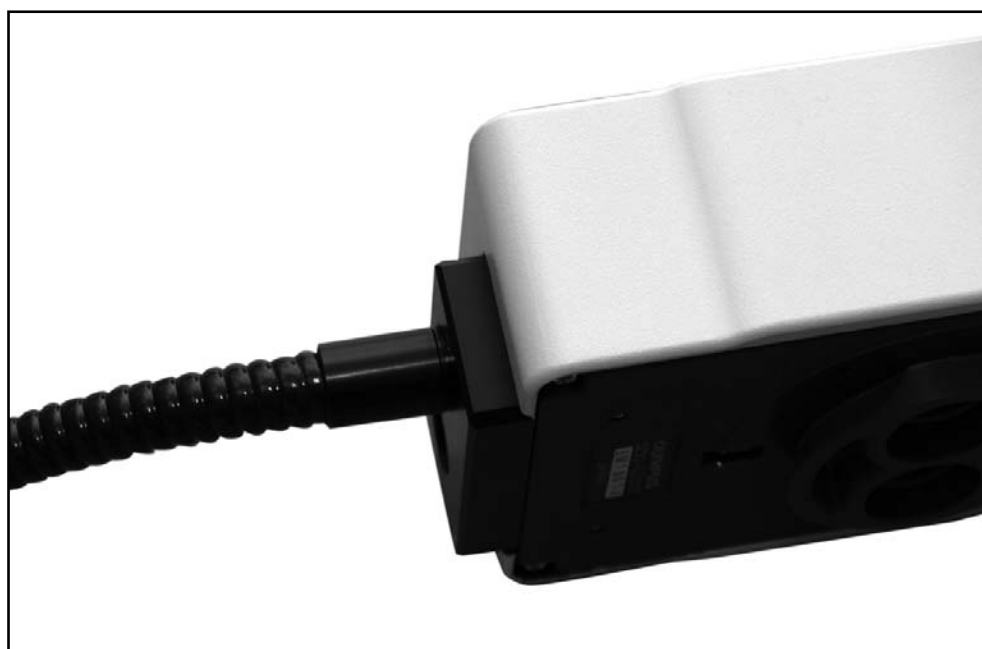
www.leedsmicro.com

Ferrule Adaptor for 10mm Light Guide

The LPI-AO8060 allows the use of a 10mm light guide to be used on the SZX illuminator products.



LPI-AO8060



LPI-AO8060 shown with the SZX2-ILLC16 and 10mm light guide

Order Product Number

LPI-AO8060

Ferrule Adapter for 10mm light guide to
Olympus SZX 12mm. Sold as a single
item

Leeds Custom Products

Phone: 800-444-5333 • 763-546-8575

Fax: 763-546-4369

custom@leedsmicro.com

www.leedsmicro.com

by Leeds

Stage Mount for the SZX2-ILLT



LPI-LED-SH Stage Mount



LPI-SICPG Metal Plate with glass



Remove from SZX2-ILT and replace with LPI-LED-SH



Glass stage plate assembly removal is done with the Olympus Spanner wrench.

The LPI-LED-SH adaptor allows the 4-LB406A stage to be mounted to the SZX2-ILLT.

The LPI-SICPG metal plate with glass insert allows for X/Y platform and the transmitted light option to be used on the SZX2-ILLT. The LPI-SICPG also can be used on the SIC4 stages.



Order Product Number

LPI-LED-SH	Stage Mount for BH2-SH Stage to SZX2-ILLT
LPI-SICPG	Metal Plate with glass for SIC4 and BH2-SH Stages

Leeds Custom Products

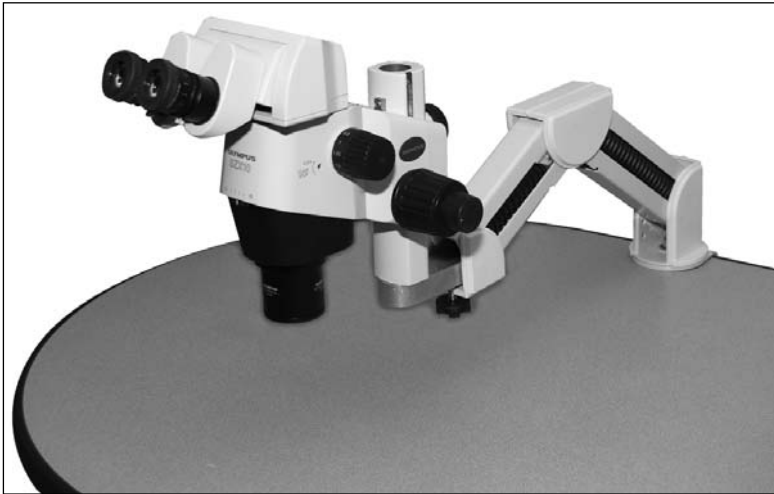
Phone: 800-444-5333 • 763-546-8575

Fax: 763-546-4369

custom@leedsmicro.com

www.leedsmicro.com

Retractable Arm



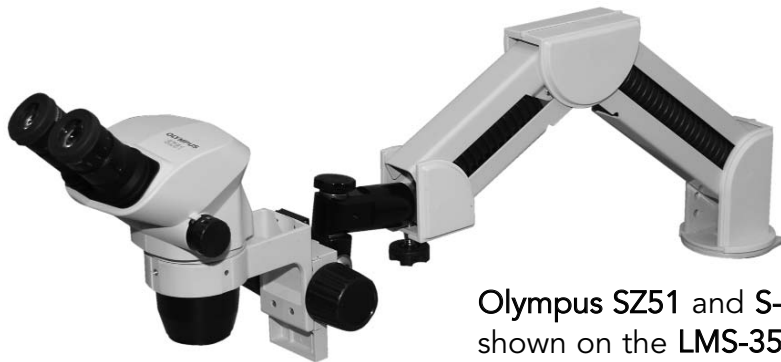
Olympus SZX10 shown on the LMS-350SZX

The Leeds **LMS-350SZ** and **LMS-350SZX** retractable arms are designed to save work space by extending and retracting the microscope 14" from the back edge of the work surface, as well as housing the cords in the arm.

The **LMS-350SZ** and **LMS-350SZX** retractable arm can be mounted to any desktop surface using a C-clamp (2" max desk thickness, 2 3/4" minimum overhang needed for clamp).

Made of 14 gauge metal, the **LMS-350SZ** and **LMS-350SZX** Retractable Arm can support up to 88 lbs.

The **LMS-350SZ** Retractable Arm holds any standard 5/8" Bonder Style Mount and Focus arm, and the **LMS-350SZX** Extension Arm holds the **Olympus SZX-FO** and **SZX-FOF** Focusing Unit.



Olympus SZ51 and S-02662
shown on the LMS-350SZ

Order Product Number

LMS-350SZ	Retractable Arm for the SZ/SZ2 bonder mount
LMS-350SZX	Retractable Arm for the SZX

Leeds Custom Products

Phone: 800-444-5333 • 763-546-8575

Fax: 763-546-4369

custom@leedsmicro.com

www.leedsmicro.com

LED Transmitted Light Base



LMS-225LEDSL base shown mounted on S-01282 and LMS-LEDS



LMS-LEDSK LED Spot Light Kit

The **LMS-225LEDSL** self-contained tuck-under base for the Olympus **S-01282** stereo stand that clears up benchtop clutter and storage problems.

The base has a dual power supply for two LED light sources; internal transmitted and reflected illumination (designed for Leeds' **LMS-LEDS** Spot illuminator). Both sources can be used at the same time and have their own light level control switches.

The **LMS-225LEDSL** uses a LED light with an adjustable intensity control for transmitted and reflected light, that fills the field with light at a zoom setting as low as .8x.

The internal mirror can be rotated 360 degrees and has a sliding feature for an oblique lighting effect. The rotatable mirror has a mirrored surface on one side, and a grey metallic surface on the other side - which allows for a better diffused lighting on samples.

The base attaches under the **S-01282** stand with three screws and can be easily installed with a #1 crosspoint screwdriver

The **LMS-LEDS** reflected LED spot lighting attaches to the **S-01282** stand and is powered with the **LMS-225LEDSL** base. This reflected LED spot lighting can also be a stand alone reflected light source if ordered as **LMS-LEDSK**, LED Spot Lighting Kit. This kit Includes a weighted base, flex arm and power supply with dimmer control.

Order Product Number

LMS-225LEDSL	LED Transmitted Light Base W/Sliding Mirror for SZ2-ST Stand
LMS-LEDS	LED Spot Light only for LMS-225LED
LMS-LEDSK	LED Spot Light Kit, Including Base, Arm & Power Control

Leeds Custom Products

Phone: 800-444-5333 • 763-546-8575

Fax: 763-546-4369

custom@leedsmicro.com

www.leedsmicro.com

Off Axis Light Attachment - SZX16



LMS-SZX16-OAX on a SZX16 stereo microscope



LMS-SZX16-OAX

The LMS-SZX16-OAX off axis light attachment is designed for use with the **SZX16** stereo microscope, with a 1x objective, and provides near vertical illumination for examining PC boards, cracks, crevices and holes. It works throughout the full zoom range and can be used at a working distance of 60mm. The compact illuminator attaches to the objective body with two, 3mm drive set screws.

Order Product Number

LMS-SZX16-OAX	Off axis light attachment for the SZX16 stereo microscope
AO8025.40	Fiber optic light guide
A20500	ACE 150 watt fiber optic light source

Leeds Custom Products

Phone: 800-444-5333 • 763-546-8575

Fax: 763-546-4369

custom@leedsmicro.com

www.leedsmicro.com

Inverted

Metallurgical Illuminator



LBX-IX2MIL



LBX-2352



IX51 with LBX-IX2MIL

The Leeds **LBX-IX2MIL** metallurgical illuminator allows the Olympus model **IX2** inverted microscope stand to be used for metrology.

The **LBX-IX2MIL** illuminator has both a field and aperture diaphragm, a three position filter slider with day-light and green filters installed.

The Olympus **IX2** stand equipped with the **LBX-IX2MIL** illuminator converts the stand into an inverted metallurgical microscope utilizing the UIS optics with a 22mm field of view, an erect image and photo ports.

Order Product Number

LBX-IX2MIL IX2 Metallurgical illuminator
(Requires use of Olympus 5-UL113 lamphouse with longer cord.)

BF/DF usage add:

U-R255 nosepiece

(remove original nosepiece and diaphragm)

U-M601 Brightfield mirror cube

U-M603 Darkfield mirror cube

Simple Polarized light add:

U-M605 Nomarski mirror cube

Adjustable Polarized light add:

LBX-2352 360° rotatable analyzer slider
with 32mm polarizer

D.I.C. usage add:

U-M605 Nomarski mirror cube

U-P200 Nomarski prism slider

Leeds Custom Products

Phone: 800-444-5333 • 763-546-8575

Fax: 763-546-4369

custom@leedsmicro.com

www.leedsmicro.com

3 Layer Cross Movement Stage for CKX31/41



LPI-CKX3PLT 2x2 Three plate stage shown on the CKX41

The LPI-CKX3PLT 2"x 2" three plate mechanical stage is designed for direct mounting of condenser lens pillar onto the stage frame on the Olympus CKX41 inverted microscope.

Order Product Number

LPI-CKX3PLT	2x2 Three plate stage (Includes metal insert)
-------------	---



LPI-CKX3PLT 2x2 Three plate stage

Leeds Custom Products

Phone: 800-444-5333 • 763-546-8575

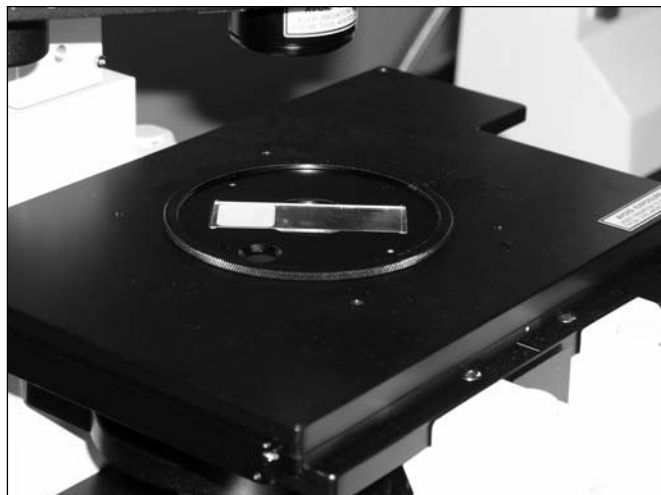
Fax: 763-546-4369

custom@leedsmicro.com

www.leedsmicro.com

Rotatable Insert Plate

IX/IX2, 3-plate design mechanical stage



LBX-IXROT-IX3/35 pictured

The **LBX-IXROT** series insert plates are designed for rotating the specimen on the **IX/IX2** series inverted microscope. They can be used with a 1" x 3" slide, 35mm Petri dish or a 50mm Petri dish. The knurled edges allow for easy rotating of the specimen while still on the stage. The **LBX-IXROT** series inserts replace the drop-in inserts of an **IX2-SFR** style three-plate design mechanical stage. Included in the Leeds design are mounting holes for using Petri dish holding clips or slide holding clips, and an oiling access hole for an oil immersion objective.

Order Product Number

LBX-IXROT-1X3	1 x 3 slide rotator for IX/IX2 3-plate design stage
LBX-IXROT-1X3/35	1 x 3 slide & 35mm Petri dish rotator for IX/IX2 3-plate design stage
LBX-IXROT-1X3/50	1 x 3 slide & 50mm Petri dish rotator for IX/IX2 3-plate design stage
AQ1203	Petri dish clip - one
AR1998	Slide clip - one

Leeds Custom Products

Phone: 800-444-5333 • 763-546-8575

Fax: 763-546-4369

custom@leedsmicro.com

www.leedsmicro.com

Condenser Pillar Pivot Modification for the CKX31/41



CKX31 with the LPI-CKX-T90 modification.

The LPI-CKX-T90 modification to the CKX31/41 condenser pillar allows for a 90 degrees rotation to the left. This makes it easier to place larger items, such as roller bottles or flasks on the stage.

The LPI-CKX-T90 modification requires that the pillar from the CKX31/41 be sent to Leeds for modification. For equipment that is currently in use in the field, Leeds has a limited number of exchange units available.

Order Product Number

LPI-CKX-T90

CKX condenser pillar 90° pivot modification



LPI-CKX-T90 modification

Leeds Custom Products

Phone: 800-444-5333 • 763-546-8575

Fax: 763-546-4369

custom@leedsmicro.com

www.leedsmicro.com

Filter Holders for IX2 Frame for IX2-AN Slot



LPI-IX2ANO-32 - 32mm Filter Slider



LPI-IX2-ANO - 25mm Filter Slider

Order Product Number

LPI-IX2ANO-32	Blank 32 mm Filter Slider for IX2-AN slot
LPI-IX2ANO	Blank 25mm Filter Slider for IX2-AN slot

Leeds Custom Products

Phone: 800-444-5333 • 763-546-8575

Fax: 763-546-4369

custom@leedsmicro.com

www.leedsmicro.com

X and Y Stage Lock for the IX

The LBX-IXSL simultaneously locks both the X and Y position on the IX three plate series of stages.



LBX-IXSL Stage Lock Shown on a Olympus IX81 FV1000

Order Product Number

LBX-IXSL X and Y Stage Lock for IX Stages

Leeds Custom Products

Phone: 800-444-5333 • 763-546-8575

Fax: 763-546-4369

custom@leedsmicro.com

www.leedsmicro.com

MX

Tilting Plate for Manipulating Samples



LMS-MEMS holding a cleaved wafer sample

The **LMS-MEMS** sample holder is designed to rotate 360° and also features a spring loaded non-metallic jaw to hold a sample. The **LMS-MEMS** allows for a cleaved wafer to be easily leveled for trench measurement by moving a knurled knob while viewing the sample.

The **LMS-MEMS** can also be used for other samples that are hard to place on a traditional stage for viewing at different angles.

**Leeds offers a wide range of specimen holders for many different applications.*

Order Product Number

LMS-MEMS

Specimen tilting plate for the
MX-SIC8



LMS-MEMS on a MX80

Leeds Custom Products

Phone: 800-444-5333 • 763-546-8575

Fax: 763-546-4369

custom@leedsmicro.com

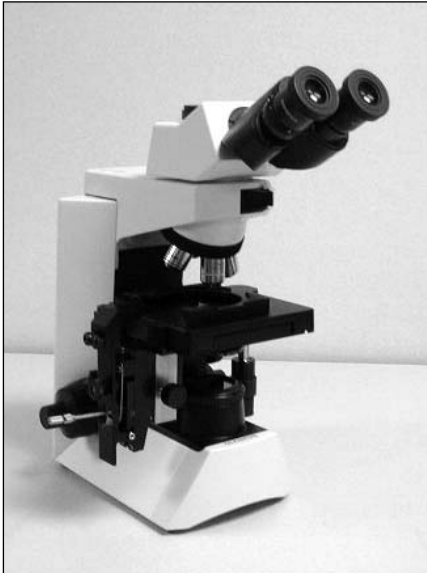
www.leedsmicro.com

cx

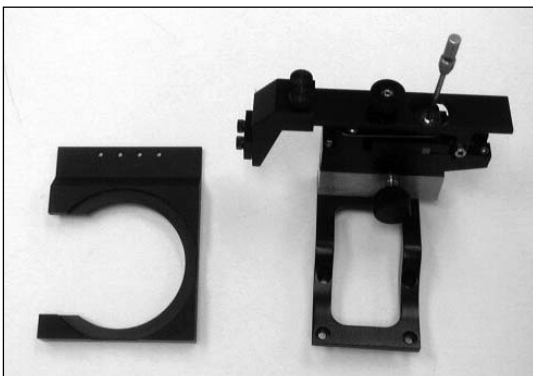
Tetrad Kit and Modification for CX31/41 Microscope

Olympus Tetrad Microscope

For use in micromanipulation of spores for genetic analysis. This ergonomically designed joystick style micromanipulator enables the rapid relocation of spores on agar surfaces.

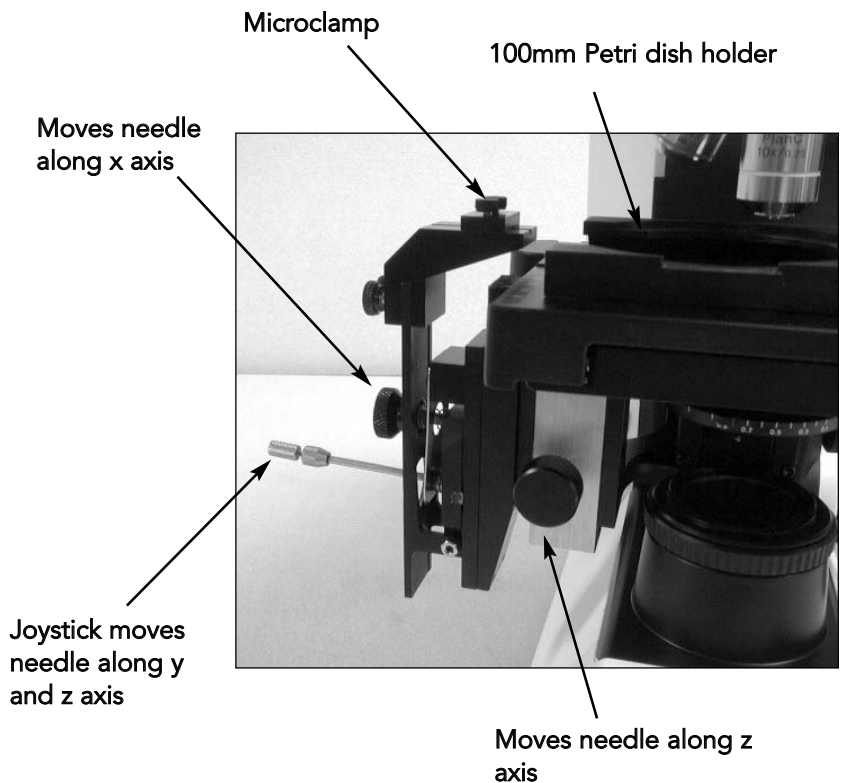


LPI-CXTET Tetrad kit shown on an Olympus CX41 microscope.



Kit includes a 100mm Petri dish holder and micromanipulator assembly.

-
- LPI-CXTET** Tetrad kit and modification to CX31 or CX41 microscope (Specify Right Hand or Left Hand mount)
- LBX-TRDPLT** Tetrad 100mm Petri dish holder - Left Hand).
- LBX-TRDPLT-R** Tetrad 100mm Petri dish holder - Right Hand).
-



Leeds Custom Products

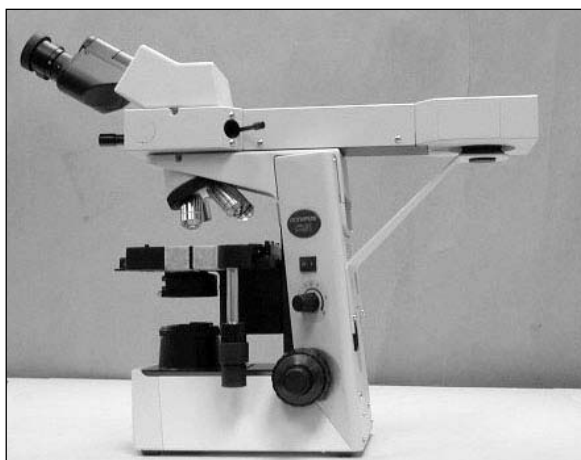
Phone: 800-444-5333 • 763-546-8575

Fax: 763-546-4369

custom@leedsmicro.com

www.leedsmicro.com

Support Brace for mounting a U-DO3 onto the CX41 Frame



The LPI-CXUDO pictured on a CX31 frame

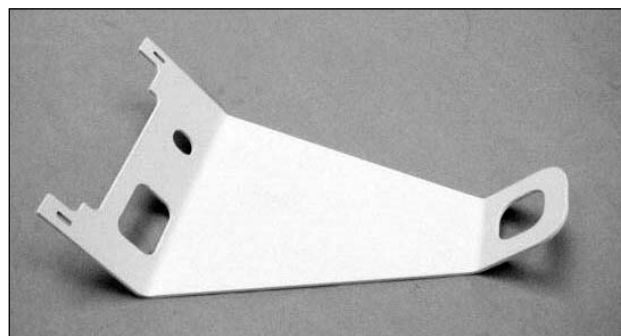
Order Product Number

LPI-CXUDO

Support brace for U-DO3 to
CX31/41 frame.



The LPI-CXUDO pictured from the back



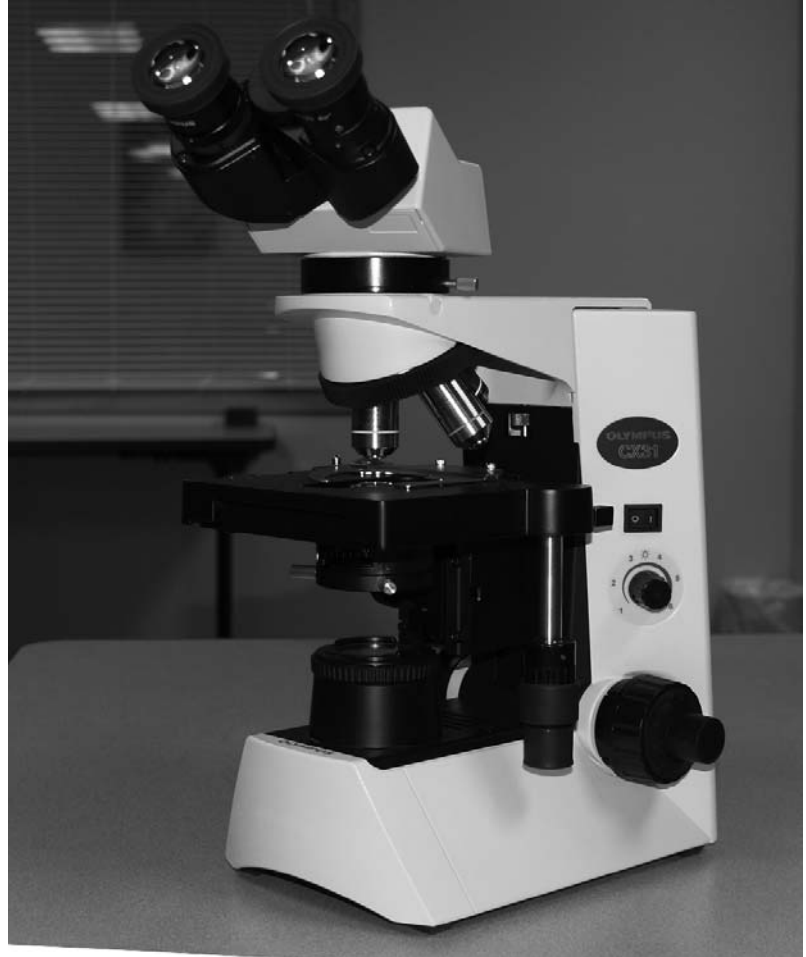
LPI-CXUDO

Leeds Custom Products
Phone: 800-444-5333 • 763-546-8575
Fax: 763-546-4369
custom@leedsmicro.com
www.leedsmicro.com

CX/BX Swivel Head Mount

The **LPI-CXS** swivel mount allows for easy rotation of the binocular of a BX or CX. This accommodates cabinet storage, allows for multiple viewers without damage to the dovetail mount and keeps the binocular from inadvertently falling off.

The **LPI-CXS** has 360° of rotation and greatly extends the life of the microscope.



LPI-CXS on a CX31



LPI-CXS

Order Product Number

LPI-CXS BX/CX Swivel Mount

Rollscope

Rollscope Base Microscope

ROLLSCOPE1OT Pictured

The Leeds Rollscope can be used for jobs that a traditional microscope can't do. The portable design with roll feet is ideal for field operation, inspection of printing rolls or viewing inaccessible and large objects that cannot be placed on the stage of a microscope. The Leeds Rollscope microscope can be configured with a focusing optical tube or focusing arm. The focusing optical tube will hold an eyepiece and an objective of a specified magnification, while the focusing arm - with the use of various adapters - will hold a machine vision type lens system.

The **ROLLSCOPE1OT** Rollscope microscope is configured with a monocular optical tube and has 1 ¼" of focus range and a leadscrew driven y-axis positioner with 1" travel. Included in the **ROLLSCOPE1OT** design is a focusing beam flashlight with mounting bracket.

The **ROLLSCOPE2OT** Rollscope microscope is configured with a monocular optical tube which has 1 ¼" of focus range and leadscrew driven positioners with 1" travel in both x-y axis. Included in the **ROLLSCOPE2OT** design is a focusing beam flashlight with mounting bracket.

The **ROLLSCOPE1SD** Rollscope microscope is configured with a focusing arm mounted on a post, which has 1 1/8" of focus range and can be mounted higher on the post for taller objects. The leadscrew driven y-axis positioner has 1" travel. Included in the **ROLLSCOPE1SD** design is a focusing beam flashlight with mounting bracket.

The **ROLLSCOPE2SD** Rollscope microscope is configured with a focusing arm mounted on a post, which has 1 1/8" of focus range and can be mounted higher on the post for taller objects. The lead screw driven positioners have 1" travel in both x-y axis. Included in the **ROLLSCOPE2SD** design is a focusing beam flashlight with mounting bracket.

ROLLSCOPE2SD Pictured
with camera**Order Product Number**

ROLLSCOPE1OT	1-axis rollscope base with focusing optical tube
ROLLSCOPE2OT	2-axis rollscope base with focusing optical tube
ROLLSCOPE1SD	1-axis rollscope base with focusing arm and post mount
ROLLSCOPE2SD	2-axis rollscope base with focusing arm and post mount

Leeds Custom Products

Phone: 800-444-5333 • 763-546-8575

Fax: 763-546-4369

custom@leedsmicro.com

www.leedsmicro.com

MVX 10

MVX 1X C Mount Adapter with Filter Slider

The LPI-MVX-V311SL 1X-C-mount adapter with slider allows for a filter to be inserted into the camera's raypath.

Adding a filter in this position when in the camera's raypath will effect parfocality.



MVX10 with LPI-MVX-V311SL



LPI-MVX-V311SL Pictured

Order Product Number

LPI-MVX-V311SL MVX 1X C mount adapter with filter slider

The LPI-MVX-V311SL C-mount adapter requires the use of the Olympus U-V111 (U-TV1X-2) adapter.

Leeds Custom Products

Phone: 800-444-5333 • 763-546-8575

Fax: 763-546-4369

custom@leedsmicro.com

www.leedsmicro.com

by Leeds

MVX 10 Hybrid Stand



MVX 10 on a Leeds Hybrid stand

The Leeds **LBX-HYBRID** hybrid stand has 18" of travel in the Z-axis, which is all done on ball bearing sleeves with - counter balanced springs. This design allows for ease in moving the microscope components out of the way for loading or unloading specimens, or just positioning for different height objects - such as whole animals or metallurgical samples. The **LBX-HYBRID** also has an adjustable stop for returning the microscope back to a predetermined position after loading a specimen.

The **LBX-HYBRID** stand is designed to be used with Olympus items: **BXFM-F** focus module, **BXFM-ILH** mount and any of the **BX2** reflected light brightfield/darkfield and fluorescence illuminators.

The **LBX-HYBRID-RSM** mount is designed for using a reflected light stage on the **LBX-HYBRID** stand.

The **LBX-HYBRID-TSM** module is to be used with the **BX2** condensers and transmitted light stages on the **LBX-HYBRID** stand. This module is a Koehler transmitted light illumination system that requires the use of a **BX2** lamphouse and an external power supply. It can also be used with a fiber optic light system.

The **LBX-HYBRID-SZX** mount allows for the use of the **SZX** stereoscope and **SZX-FO/FOF** focus unit to be used with the **LBX-HYBRID** stand.

The combination of the hybrid stand and the many Olympus modular components make for a versatile microscope for viewing a variety of size of specimens.

Order Product Number

LBX-HYBRID	Hybrid stand with 18" Z-axis range
LBX-HYBRID-RSM	Reflected light stage mount
LBX-HYBRID-TSM	Transmitted light stage module
LBX-HYBRID-SZX	Mount for SZX and SZX-FO/FOF focus unit

Leeds Custom Products

Phone: 800-444-5333 • 763-546-8575

Fax: 763-546-4369

custom@leedsmicro.com

www.leedsmicro.com

Dual Photo Port



The LPI-DPP allows for a quick change between two cameras with different mounts on the Olympus MVX10. Please contact the Leeds Custom Department for more information on other custom photo ports.

Order Product Number

LPI-DPP Dual Photo Port Module

Leeds Custom Products

Phone: 800-444-5333 • 763-546-8575

Fax: 763-546-4369

custom@leedsmicro.com

www.leedsmicro.com

3 Place Nosepiece for the MVX



LMS-MVX-3RE Three-place nosepiece



LMS-MVX-3RE on the Leeds Z Plus Stand

The Leeds **LMS-MVX-3RE** three-place nosepiece is designed for use on the **MVX10** macroscope. This nosepiece design allows for the mounting of three different objectives to the **MVX10**. *The **LMS-MVX-3RE** can not be used with a ringlight.*

Order Product Number

LMS-MVX-3RE	Three place nosepiece for MVX10
--------------------	---------------------------------

FluoView

Filter Holder for the FluoView 300



LFV-EMBFS

The **LFV-EMBFS** empty filter slider will accept an 18mm emission filter for the **FluoView 300**.

Order Product Number

LFV-EMBFS	18mm Filter holder for the FluoView 300 (18 mm Blank slider for FluoView 300)
------------------	---

Leeds Custom Products

Phone: 800-444-5333 • 763-546-8575

Fax: 763-546-4369

custom@leedsmicro.com

www.leedsmicro.com

Z Plus

Z Plus Stand - RFA



LPI-Z+RFARM



LPI-Z+RFA16

The **LPI-Z+RFA16** is a modification of the Olympus **SZX16** fluorescence illuminator with the focus components removed. The **LPI-Z+RFA16** is designed for the Z Plus stand and provides for greater stability and steadiness of the optical image. The **LPI-Z+RFA16** provides an even and seamless fluorescence illumination and has a five position turret for various filter units. The **LPI-Z+RFA16** requires the **LPI-Z+RFARM**.



Leeds Z Plus Stand shown with **LPI-Z+RFA16** Fluorescence Illuminator and **LPI-Z+KOE** Köhler illumination module.

Order Product Number

LPI-Z+RFA16	Fluorescence Illuminator
LPI-Z+RFARM	RFA16 Optical Arm

Z Plus Stand - BX2 Components



LPI-Z+BXARM



LPI-Z+KOE

The Leeds Z Plus Stand is shown with BX2 Optical Arm and Köhler illumination module.

Order Product Number

LPI-Z+BXARM

BX2 Optical Arm

LPI-Z+KOE

Köhler Illumination Module

The **LPI-Z+KOE** Köhler Illuminator Module for the Z Plus Stand is designed for a fixed stage height. The **LPI-Z+KOE** has a field diaphragm and filter cassette that can hold up to four filters. The **LPI-Z+KOE** will accept any Olympus BX/BX2 choice of stage, condenser and lamp housing. The **LPI-Z+KOE** can also accept the **LPI-Z+FOK** fiber optic illumination kit.

The **LPI-Z+BXARM** Optical Arm, when added to the Z Plus Stand, allows for use of the Olympus BX2 reflected light microscope components.

Leeds Custom Products

Phone: 800-444-5333 • 763-546-8575

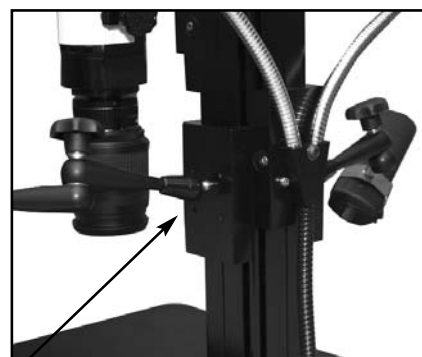
Fax: 763-546-4369

custom@leedsmicro.com

www.leedsmicro.com

Copy Stands

Simple Copy Stands



All adjustments to the stand are done with a 3mm wrench.

Leeds' simple copy stands column have a dovetail on all four sides, which allows for accessories like cameras and lighting to be added easily.

The Leeds Custom Products Department can design and build a wide range of custom simple copy stands to meet any of your projects needs.

Please contact Leeds for more information on our complete line of simple copy stands.

Leeds Custom Products

Phone: 800-444-5333 • 763-546-8575

Fax: 763-546-4369

custom@leedsmicro.com

www.leedsmicro.com

Measuring Systems

Three Axis Measuring System for the Olympus BX41RF/BX51RF

The LPI-SIC4LE-.5UM, LPI-BX51ZHE and LPI-DRO3QC modifications are a three axis, .5 um resolution, measuring system for the Olympus BX41RF/BX51RF frame with the Olympus U-SIC4R2 mechanical stage. (The Olympus U-SIC4R2 mechanical stage has 4" x 4" of travel). Also available for the system is the LPI-DRO3QC three axis digital readout with RS232 output.



Order Product Number

- | | |
|------------------------|--|
| LPI-SIC4LE-.5UM | 2-Axis Linear Encoders with .5um resolution. Includes all parts and labor to install on customer's Olympus U-SIC4R2 Mechanical stage. |
| LPI-BX51ZHE | Z-Axis Linear Encoder with .5um resolution Includes all parts and labor to install on customer's Olympus BX41RF/ BX51RF reflected light frame. |
| LPI-DRO3QC | 3-Axis QC-130 Digital Readout with RS232 output. |

The Leeds Customs Department requires the BX41RF/BX51RF and the U-SIC4R2 stage to perform the modifications.

Video Inspection System



The Leeds **LPI-SFHF25** Video Inspection System is a fully integrated video microscope that incorporating a lens, camera and display into one compact piece of equipment.

The Leeds **LPI-SFHF25** is designed to inspect parts with an adjustable field of view and magnification range. When combined with Leeds' **LMS-300** articulating arm and the **LMS-197** table clamp post, the **LPI-SFHF25** becomes an ergonomic and work space friendly inspection system.

The **LPI-SFHF25** Video Inspection System includes:

Color analog video camera, 1/3" CCD
15" Color HD LCD monitor
4x to 15.2x magnification range
.54 x .41" to 2.06 x 1.54" field of view
1.8" to 10" working distance

LPI-SFHF25 Video Inspection System

Order Product Number

LPI-SFHF25 Video Inspection System
LMS-300 Articulating Arm
LMS-197 Table Clamp Post
LMA-036A Drop Prevention Collar

Working Distance	Magnification at Monitor	Field of View
1.8" (min)	15.2x (max)	.54" x .41"
3"	14.3x	.74" x .56"
4"	8.90x	.92" x .70"
5"	7.35x	1.12" x .84"
6"	6.37x	1.30" x .94"
7"	5.57x	1.48" x 1.12"
8"	5.00x	1.64" x 1.24"
9"	4.53x	1.82" x 1.38"
10"	4.00x	2.06" x 1.54"

Leeds Custom Products

Phone: 800-444-5333 • 763-546-8575

Fax: 763-546-4369

custom@leedsmicro.com

www.leedsmicro.com

All in One Video Inspection System



LPI-SFHF25AIO "All in One" Video Inspection System

Order Product Number

LPI-SFHF25AIO	All in One Video Inspection System
LMS-197-24	24" Post W/ C-Clamp Mount
LMS-300	Articulated Boom Arm
LMA-036A	Safety Collar for Boom Stand
LPI-BFM	Bonder Focus Mount
LMS-LEDLK	LED Spot Light Kit

Leeds' All in One Video Inspection Systems is a LCD resistive touch screen, PC based vision system, that allows users to do their inspection on an integrated monitor.

The Leeds All in One Video Inspection System has an intergraded five megapixel color video camera, 25mm lens, LCD resistive touch screen computer, articulated arm for the lens and camera, and a movable arm which allows the end users to easily adjust the height and tilt of display to provide better ergonomic viewing.

The systems features include:

- 1X, 2X and 3X digital zoom settings - additional custom magnification settings available.
- Auto gain and white balance with magnification change.
- Ability to load your own digital reticle overlays with a bitmap file via a thumb drive.
- Reticle overlay can be changed to any color.
- Image capture and storage locally or via a thumb drive.
- View samples with ambient light or with optional LED lighting.
- Customizable security levels.

Leeds Custom Products

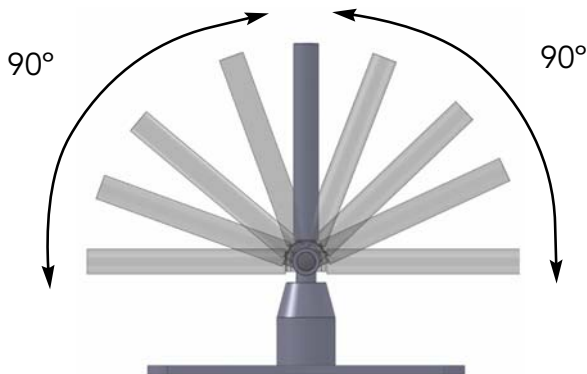
Phone: 800-444-5333 • 763-546-8575

Fax: 763-546-4369

custom@leedsmicro.com

www.leedsmicro.com

Angle Pillar Stand



LMS-710 Angle Pillar Stand, **LMS -700** Adjustable Height Stage and video camera

The **LMS-710** Angle Pillar Stand has an 32mm diameter post that can be adjusted to an angle of 180° of inclination - in 10° increments. The pivot point of the **LMS-710** is 4 ½" and all angle adjustments are done with a quick release push button.

The **LMS-710** includes a ¾" x 16" x 16" black anodized base and a 10" high post above the pivot point - additional heights available.

The **LMS-710** also includes the **LMS-700** Adjustable Height Stage mount that has a 1 ½" height adjustment range, which advances at ½" per turn of the adjusting ring. The **LMS-700** also includes a **BX/BX2** circular stage mount.

Order Product Number

LMS-710 Angle Pillar Stand with Height Adjustable Stage

Leeds Custom Products

Phone: 800-444-5333 • 763-546-8575

Fax: 763-546-4369

custom@leedsmicro.com

www.leedsmicro.com