



District of Columbia
Office of the State Superintendent of Education

Early Learning Course Catalog
WINTER 2017
OSSE Division of Early Learning



osse.dc.gov



facebook.com/ossedc



[@OSSEDC](https://twitter.com/OSSEDC)



202.727.6436





OSSE Mission

To remove barriers and create pathways for District residents to receive a great education and prepare them for success in college, careers, and life.

Introduction to the Winter 2016-2017 Course Catalog

Thank you for your interest in professional development courses offered by the Office of the State Superintendent of Education, its partners and contractors, as well as the community of OSSE-Certified trainers. We look forward to providing responsive training opportunities that support your work creating high-quality learning experiences for children of all ages.

OSSE-sponsored offerings are data driven and/or research-based. Trainings are selected and prioritized based on a variety of data sources including, but not limited to: community requests and workgroups; analysis of program assessment data; student achievement data from federal, state, and District sources; the education services monitor program reports; licensing inspection reports; the DC Common Core Early Learning Standards; and DC Municipal Regulations 5-A Chapter 1.

The Early Learning Course Catalog was developed to provide the early childhood education (ECE) and Out-of-School Time (OST) workforce with multiple opportunities for professional growth and development; opportunities for meeting the yearly professional development requirements; and opportunities to participate in a District-wide professional learning community.



District of Columbia Child Care Resource and Referral (CCR&R)

Introduction to Kids Comprehensive Services (KCS), LLC and Child Care Resource and Referral (CCR&R)

Kids Comprehensive Services (KCS), LLC was recently awarded the Child Care Resource and Referral (CCR&R) grant through the Office of the State Superintendent of Education's (OSSE) Division of Early Learning. KCS has partnered with the Division of Early Learning in the leadership and management of a comprehensive CCR&R system. The purpose of the CCR&R system is to create an integrated and effective system of supports and services for families and child care providers in the District of Columbia. The CCR&R system will provide responsive services and evidence-based supports that promote high-quality early care and education in DC. These services and supports include, but are not limited to:

- Helping connect families with early care and education opportunities, including information on how to access educational and financial resources, understand quality child care and the importance of quality in promoting positive child development, and other referrals for supports needed by families seeking child care assistance;
- Connecting early care and education providers to professional development that adheres to the mission and priorities of the Division of Early Learning, and provide information to respond to local and federal regulatory requirements to support the early childhood workforce;
- Providing technical assistance, consultation and coaching to child development facilities on how to

provide inclusive child care settings and meet the needs of children with disabilities and special health care needs surrounding the implementation of high-quality, evidence-based early childhood practices;

- Providing and maintaining access to a resource-rich CCR&R lending library that allows families and early childhood educators to borrow quality literature and books, digital resources, and curriculum resources in person and online; and
- Creating and maintaining collaborative relationships with other agencies within the District government.

CCR&R Supports Families

CCR&R is a free service that takes the guesswork out of locating child care by providing the following services:

- An unbiased customized list of child care providers based on families' individual child care needs;
- Trained specialists to provide guidance by phone, in person, and the internet that enables the family to make informed choices;
- Information on financial assistance strategies for child care payment options;
- Centrally located and public transportation accessible service centers that have a resource library;
- Parent workshops and early child development training; and
- Collaboration with other family support services to promote a holistic vision that includes health, literacy, and special needs.

CCR&R Supports Child Care Providers

CCR&R supports providers to create child care settings that help children grow and learn by offering:

- Child care business owners the opportunity to be listed in the CCR&R database;
- Free professional development in diverse topics and core knowledge areas of health & safety, child growth and development, inclusion, and sound business practices;
- Information on available financial assistance strategies to support access to higher education resources and technical assistance to promote high-quality early childhood education; and
- Centrally located and public transportation accessible service centers including a resource library.

CCR&R Service Center

CCR&R collaborates to build an integrated system of supports and services for families and early child care educators that:

- Administers an early childhood call center and walk-in resource center;
- Manages the trainer approval program and publishes the trainer resource guide;
- Produces the Early Learning Foundations Catalog; and
- Supports continuous quality improvement through diverse professional development opportunities and tiered levels of technical assistance.

CCR&R Service Center Locations:

Point of Contact: Dale Brown
209 Upshur St. NW,
Washington, DC 20011
(202) 462-0603
Monday - Friday: 9 a.m. - 5 p.m.

Point of Contact: Brenda Harris
2041 Martin Luther King Jr. Ave. SE,
Washington, DC 20020
(202) 678-0027
Monday - Friday: 9 a.m. - 5 p.m.

CCR&R Hotline: (202) 829-2500
Monday - Friday: 9 a.m. - 5 p.m.
Translation services provided

CCR&R Email address:
osse.dchildcareconnections@dc.gov



Child Care and Development Block Grant Act (CCDBG): Required Health and Safety Training

On Nov. 19, 2014, President Obama signed the Child Care and Development Block Grant (CCDBG) Act of 2014 into law. This law reauthorizes the child care program for the first time since 1996, and represents a historic re-envisioning of the Child Care and Development Fund (CCDF) program. The law made significant advancements, including defining health and safety requirements for child care providers.

As part of the law, states¹ must have health and safety training requirements and training and professional development requirements in place by Sept. 30, 2016. Health and safety requirements and training include the following 11 topic areas:

- Administration of medication;
- Prevention and control of infectious diseases;
- Sudden Infant Death Syndrome (SIDS) and use of safe sleep practices;
- Prevention and response to food allergies;
- Building and physical premises safety;
- Prevention of shaken baby syndrome and abusive head trauma;
- Emergency preparedness and response planning;
- Storage of hazardous materials & bio-contaminants;
- Precautions in transporting children, if applicable²;
- First-aid and cardiopulmonary resuscitation (CPR); and
- Nutrition and physical activity.

Pursuant to the CCDBG Act of 2014 and 29 DCMR 333.2(a), 29 DCMR 338.2(g), and 29 DCMR 352.2(b), new and existing directors, caregivers, and teachers must complete health and safety training in the 11 topic areas listed above. For new directors, caregivers, and teachers, health and safety training in the 11 topic areas must be completed either pre-service or within an orientation period not to exceed three months from the employee’s first day of employment. For existing directors, caregivers, and teachers, health and safety training in the 11 topic areas must be completed no later than Sept. 30, 2017. Evidence that new and existing directors, caregivers, and teachers have completed health and safety training in the 11 topic areas must be maintained at the child development facility and be readily available for inspection.

To assist new and existing directors, caregivers, and teachers in meeting these new training requirements, the Division of Early Learning’s Professional Development Unit is offering both synchronous (i.e., classroom) and asynchronous (i.e., online) courses that cover the 11 topic areas.

¹ The term “state” means the 50 states and the District of Columbia.
² This training topic is only required for providers that offer transportation services to children.

CATALOG FORMAT

Early Learning Catalog Distribution Cycle for FY 2017	The Early Learning Course Catalog will be distributed on the following schedule: <ul style="list-style-type: none"> • Fall (October, November, December) • Winter (January, February, March) • Spring (April, May, June) • Summer (July, August, September)
Quarterly Listings	The listings will span a full quarter allowing participants to plan trainings “ahead of time” and allow providers to develop a strategy for incorporating OSSE sponsored trainings into their greater staff development plans.
Table of Contents	The Table of Contents will help readers navigate the content of the course catalog.
Announcement Pages	The Announcement Pages will enable readers to stay abreast of OSSE initiatives and local offerings.
OSSE sponsored trainings	OSSE-sponsored training, provided through a network of local and national partners and contractors are offered at no cost to participants.
Professional Learning Units	The term Professional Learning Units (PLUs) is used in conjunction with “clock hours” to provide greater alignment with the professional development requirements for educators at DC Public Schools, public charter schools, and community-based organizations.
Core Knowledge Areas (CKA):	Core Knowledge Areas detail the specific knowledge and skills needed by early childhood professionals to work effectively with all young children and families. ECE and OST educators can increase their ability to provide quality learning experiences for young children by taking courses in all 11 areas. CKAs include: Child Growth and Development; Observing, Documenting and Assessing to Support Young Children and Families; Health, Safety, and Nutrition; Curriculum; Inclusive Practices; Learning Environments; Building Family and Community Relationships; Diversity: Family, Language, Culture, and Society; Program Management: Operation and Evaluation; Professionalism and Advocacy; and, Social-Emotional Development and Mental Health.
Course Listings	Course listings are communicated through an easy to understand visual display. OSSE-sponsored listings also include a live hyperlink to the registration page for easy enrollment in courses. <i>See below.</i>

COURSE LISTING EXAMPLE:

The diagram shows a course listing for 'SEASONS IN THE PARK!' at Rock Creek Park Nature Center. Callouts point to the following elements:

- DATE OF OFFERING:** Jan. 18
- TITLE OF OFFERING:** SEASONS IN THE PARK! ROCK CREEK PARK NATURE CENTER
- NUMBER OF “CLOCK HOURS” EARNED:** 2.0 Professional Learning Units (clock hours)
- CORE KNOWLEDGE AREA COVERED:** CKA: Curriculum

Join Park Ranger Maggie Zadorozny for a field experience geared toward teachers of children ages 2 to 5 years old! Discover the beauty of Rock Creek Park in any season. Hike the nearby forest and look for seasonal changes, meet some of the animals that call the District of Columbia home, and learn about the vast resources available to support.

Date: January 18, 2017

Time: 3 - 6 p.m.

Location: 5200 Glover St. NW, Washington, DC

Register by Web: osse.dc.gov

Cost: FREE

Sponsor(s): Rock Creek Park Nature Center and OSSE

COURSE DESCRIPTION

EVENT DETAILS

REGISTRATION INSTRUCTIONS

(for OSSE-sponsored offerings ‘click’ the link for easy web registration) **Please cancel 48 hours in advance in order to provide spaces for other participants.**

POLICIES AND PROCEDURES:

OSSE-sponsored trainings are offered at no cost to participants. In order to continue providing these dynamic resources for free, we ask that each participant who registers for an OSSE-sponsored training adhere to the following conditions:

- Plan to arrive at least 5-10 minutes before the training is scheduled to begin.
- If you are unable to attend training you have registered for, please e-mail osse.dcchildcareconnections@dc.gov at least 48 hours in advance so that your ticket can be used for another participant (no phone calls please).
- If arriving late, please note that trainers reserve the right to deny entrance after a 10-minute grace period.
- If arriving late, any certificate issued will reflect your actual professional learning units/clock hours earned and may be sent via e-mail based on trainer preference.
- If arriving late due to an unforeseen emergency, please call (202) 727-6436 to alert the OSSE front desk staff.

FREQUENTLY ASKED QUESTIONS

Where are OSSE's offices?

OSSE is located at 810 First St NE, three blocks from Union Station. When exiting the station, turn toward the right and walk away from Massachusetts Avenue. Continue down First Street until you see the sign labeled 810.

What is the closest Metro Station to OSSE?

The closest Metro Station is the Union Station Metro (Red Line).

Is there parking at 810 First Street NE?

Yes. There are a number of parking garages near 810 First Street NE. The prices range from \$15 to \$25 dollars. There is also limited two-hour on street parking. Please note: We recommend taking the Metro or car pool. It generally takes 15 minutes to find a parking spot and get to the training location. Please plan accordingly.

Do I need an ID to attend training?

Yes. In order to enter the building, you will need to show an identification card to sign in with the guard. There is a 100 percent ID Check policy to enter the building.

Do I need to print my Eventbrite ticket for entry?

Yes. The Eventbrite ticket serves as proof of your registration. In the event that training is over-booked, preference is given to participants who are registered to attend.

Do I have to register to attend training?

Yes. In the event the training is over-booked, preference is given to participants who are registered to attend. Walk-in participants are not guaranteed a seat or training materials.

When we meet at a community site (Smithsonian, Rock Creek Park, etc.) and I cannot find the training group, what do I do?

During off-site trainings, there is generally an OSSE staff member and/or trainer to greet participants upon their arrival. If arriving late, locate the information booth at the community site and ask for information regarding your class. If you are still unable to find the training, call the OSSE front desk staff at (202)727-6436.

My staff needs training; however, I do not see our preferred content listed in the current catalog. What should I do?

There is an OSSE-Certified Trainer Resource Guide located at the back of each Early Learning Course Catalog. The trainers listed provide fee-for-service training and can work with you to customize trainings for your staff's professional development needs. OSSE's Division of Early Learning Professional Development Unit also provides limited on-demand training opportunities. Contact Julie Wennekes, Professional Development Supervisor, at julie.wennekes@dc.gov to inquire about booking OSSE's Division of Early Learning Professional Development.

TABLE OF CONTENTS

11	January At-A-Glance
12	January Offerings
21	February At-A-Glance
22	February Offerings
30	March At-A-Glance
31	March Offerings
38	Online Training
49	CPR Resources
50	OSSE-Certified Trainer Resource Guide

CONTACT US!

If you have any questions, comments, or concerns, please feel free to contact the Early Learning Professional Development Unit via e-mail.

Julie.Wennekes@dc.gov

Julie Wennekes, Professional Development Unit Supervisor

Diane.Mason@dc.gov

Diane Mason, Program Support Specialist

DrJaniceEdwards@outlook.com

Dr. Janice Edwards, DC Child Care Connections



SPACE IS LIMITED!

EARN 45 CLOCK HOURS

Child Development Associate Renewal Training

Information & Registration

Date:

Jan. 14, 2017

Time:

10 a.m. – 2 p.m.

Class Schedule

Dates:

Jan. 28, 2017 – April 22, 2017

Saturdays

(2 times per month)

Time:

9 a.m. – 3 p.m.

Special Class Offerings

First Aid/CPR

Child Abuse & Neglect

DC Common Core Early Learning Standards

Health & Safety Training

Reminder: Your CDA credential must be renewed every 3 years.

The CDA credential renewal process must be completed six months before it expires.

This program is in partnership with the Office of the State Superintendent of Education (OSSE)

Contact Lorraine Crews at (202) 561-1100 or scf.pdi@gmail.com





SPACE IS LIMITED!
FREE CDA TRAINING
EARN 120 CLOCK HOURS

Advance your early learning career by completing the Child Development Associate training.

Information Sessions will be held on

Date: April 4, 2017
Time: 6:30 – 8:30 p.m.

Date: April 6, 2017
Time: 6:30 – 8:30 p.m.

Classes will be held on

April 13, 2017 – Aug. 24, 2017

Special Class Offerings

- First Aid/CPR • Child Abuse & Neglect
- DC Common Core Early Learning Standards • Health & Safety Training

This program is in partnership with the Office of the State Superintendent of Education (OSSE)

Contact **Lorraine Crews** at (202) 561-1100 or scf.pdi@gmail.com



JANUARY AT-A-GLANCE

January 5	Starting Strong: Nutrition for Infants and Toddlers
January 6	Nutrition for Early Learners
January 6	DC Common Core Early Learning Standards 101
January 7	Building and Physical Premises Safety
January 9	Emergency Preparedness
January 9	Adult/Pediatric First Aid and CPR
January 10	Community Emergency Response Team (CERT) Training
January 10	Food Allergy Prevention and Response
January 12	Developmental Milestones for 3-5 Year Olds
January 12	Ready to Learn
January 13	Child Abuse Prevention and Mandatory Reporter Training
January 14	Building a Vibrant Early Childhood Education Business
January 17	How to Prevent and Control Infectious Diseases
January 18	Observing and Assessing Young Children
January 19	Screen time: Does the Bad Outweigh the Good?
January 19	Addressing the Impact of Parental Incarceration on Children, Families, Schools, and Communities
January 23	Administration of Medication (AOM) Training
January 23	Precautions in Transporting Children
January 24	Infant Safe Sleep Practices
January 24	Children and Fire/Fire Extinguisher Training
January 24	Stewards of Children
January 25	Creating Diversity in Early Learning Classrooms
January 28	A Blueprint for Building a Vibrant Business

JANUARY OFFERINGS

Jan. **5** **Starting Strong: Nutrition for Infants and Toddlers**
Units/Clock Hours:
 2.5 Professional Learning Units

Description: This session will help participants better understand developmental readiness for introducing solid foods to infants and the process of transitioning to table foods. Participants will also be provided with ways to promote good nutrition that will prepare children for a lifetime of growing and learning. This two and a half clock hour training will also cover the Child and Adult Care Food Program (CACFP) infant meal pattern and feeding guidelines, which all licensed providers are required to follow.

Date: Thursday, Jan. 5, 2017

Time: 9:30 a.m. - 12 p.m.

Location: OSSE, 810 First St. NE, Third Floor, Grand Hall Side A

Register by Web: bit.ly/2j3Aybu

Sponsor(s): OSSE – Wellness and Nutrition

Audience: All caregivers, teachers, assistant teachers and directors.

Core Knowledge Area: Health, Safety and Nutrition
 (CCDF Topic: Nutrition and physical activity)

Jan. **6** **DC Common Core Early Learning Standards 101**
Units/Clock Hours:
 3 Professional Learning Units

Description: This highly interactive training will provide participants with an understanding of the fundamentals of the District of Columbia Common Core Early Learning Standards (DCCCELS) in order to use the standards to build a foundation for high-quality care and education for all children from birth to pre-kindergarten. The training will use group discussions, hands-on activities, and video clips to allow participants to explore the components and structure of the DCCCELS and develop an understanding of developmentally appropriate programming for infants, toddlers and preschool children in the beginning stages of effective implementation.

Date: Friday, Jan. 6, 2017

Time: 12:30 – 3:30 p.m.

Location: OSSE, 810 First St. NE, Eighth Floor 806 A & B

Register by Web: bit.ly/2iKtoeT

Sponsor(s): OSSE

Audience: All infant, toddler and preschool teachers, assistant teachers and directors

Core Knowledge Area: Child Growth and Development

Jan. **6** **Nutrition for Early Learners**
Units/Clock Hours:
 2.5 Professional Learning Units

Description: Good nutrition is a key for supporting healthy development and preparing children for school. This training session will teach you the basics of good nutrition for toddlers and preschoolers, as well as planning and preparing nutritious meals with a focus on meeting the Child and Adult Care Food Program (CACFP) meal pattern requirements, which all licensed providers are required to follow. This training will also cover best practices for creating positive meal times and implementing family-style meal service.

Date: Friday, Jan. 6, 2017

Time: 9:30 a.m. – 12 p.m.

Location: OSSE, 810 First St. NE, Eighth Floor, 806 A & B

Register by Web: bit.ly/2iMLyde

Sponsor(s): OSSE – Wellness and Nutrition

Audience: All caregivers, teachers, assistant teachers and directors

Core Knowledge Area: Health, Safety and Nutrition
 (CCDF Topic: Nutrition and physical activity)

Jan. **7** **Building and Physical Premises Safety**
Units/Clock Hours:
 2 Professional Learning Units

Description: In this training participants will explore ways to plan, practice and promote safety in their early learning environments. Participants will discuss keeping children safe, away from poison hazards, choking and suffocation. This training will review three essential components of keeping children safe: education, supervision and environment.

Date: Saturday, Jan. 7, 2017

Time: 10 a.m. – 12 p.m.

Location: 209 Upshur St. NW, Washington, DC 20011

Register by Web: bit.ly/2iZfrqR

Sponsor(s): Kids Comprehensive Services (KCS) and OSSE

Audience: All infant, toddler and preschool teachers, assistant teachers and directors

Core Knowledge Area: Health, Safety and Nutrition
 (CCDF Topic: Building and physical premises safety)

Jan.

9

Emergency Preparedness**Units/Clock Hours:**

2 Professional Learning Units

Description: Being prepared for emergencies can make a big difference as to whether or not the children in your care and the staff in your program remain safe. In this course, participants will learn about the necessary steps a program should take to ensure preparedness in the event of an emergency, as well as effective strategies to communicate the emergency plan to children, parents, and staff.

Date: Monday, Jan. 9, 2017

Time: 9 – 11 a.m.

Location: OSSE, 810 First St. NE, Eighth Floor 806 A & B

Register by Web: bit.ly/2dvp17h

Sponsor(s): DC Emergency Management Systems for Children/Children's National Health System/Health Resources and Service Administration and OSSE

Audience: All caregivers, teachers, assistant teachers and directors.

Core Knowledge Area: Health, Safety and Nutrition (CCDF Topic: Emergency preparedness and response planning)

Jan.

9

Adult/Pediatric First Aid and CPR**Units/Clock Hours:**

7 Professional Learning Units

Description: With an emphasis on hands-on-learning, the First Aid/CPR/AED courses give participants the skills to save a life. Participants will also learn how diseases are transmitted and will discover preventative measures for limiting the spread of disease in child care facilities.

Date: Monday, Jan. 9, 2017

Time: 9 a.m. - 5 p.m.

Location: OSSE, 810 First St. NE, Grand Hall Side B

Register by Email to: osse.dccchildcareconnections@dc.gov

Sponsor(s): The Coles Group and OSSE

Audience: All staff members involved in providing direct care to children (teachers, assistant teachers, care givers, volunteers, substitutes, directors, etc.)

Core Knowledge Area: Health, Safety and Nutrition (CCDF Topic: First-aid and cardiopulmonary resuscitation)

Jan.

10

Community Emergency Response Team (CERT) Training**Units/Clock Hours:**

6 Professional Learning Units

Description: This course teaches basic disaster response skills, fire safety, light search and rescue, CERT team organization, disaster psychology, terrorism awareness, and disaster medical operations.

Date: Tuesday, Jan. 10, 2017

Time: 9 a.m. – 4 p.m.

Location: OSSE, 810 First St. NE, Third Floor Grand Hall Side A

Register by Web: bit.ly/2iKzbRy

Sponsor(s): Serve DC and OSSE

Audience: All caregivers, teachers, assistant teachers and directors

Core Knowledge Area: Health, Safety and Nutrition (CCDF Topic: Emergency preparedness and response planning)

Jan.

10

Food Allergy Prevention and Response**Units/Clock Hours:**

3 Professional Learning Units

Description: This session will discuss the preparation and handling of food for children of all ages, including the consumption of formula, human milk, and solid foods. Participants will also learn how to recognize and respond to food allergies and how to create and follow individual care plans for children with food allergies.

Date: Tuesday, Jan. 10, 2017

Time: 10 a.m. - 1 p.m.

Location: OSSE, 810 First St. NE, Third Floor Grand Hall Side B

Register by Web: bit.ly/2dVmUsG

Sponsor(s): Children's National Health System and OSSE

Audience: All infant, toddler and preschool teachers, assistant teachers and directors

Core Knowledge Area: Health, Safety and Nutrition (CCDF Topic: Prevention and response to food allergies)

Jan.

12

**Developmental Milestones
for 3-5 Year Olds****Units/Clock Hours:**
2 Professional Learning Units

Description: This workshop provides an overview of typical developmental milestones for children between the ages of three and five in the following domains: communication, gross motor, fine motor, social-emotional, cognitive. It also provides sample intervention strategies for each domain, and the opportunity to create your own.

Date: Thursday, Jan. 12, 2017**Time:** 9 - 11 a.m.**Location:** OSSE, 810 First St. NE, Fourth Floor 4002**Register by Web:** bit.ly/2iQX0rh**Sponsor(s):** Early Stages, DC Public Schools and OSSE**Audience:** Parents, teachers, healthcare providers, childcare staff, community members**Core Knowledge Area:** Child Growth and Development

Jan.

13

**Child Abuse Prevention
and Mandatory Reporter Training****Units/Clock Hours:**
3 Professional Learning Units

Description: Mandatory Reporter Training contains definitions, examples, and signs of child abuse and neglect, numerous resources and DC legal codes, helpful tips for mandatory reporters, and interactive learning checks to confirm you learned important concepts. After you complete this training, you should be able to understand your legal obligations as a mandatory reporter; define the types of child abuse and neglect; recognize signs of child abuse and neglect; identify groups of children who may be at a higher risk for abuse or neglect; and more.

Date: Friday, Jan. 13, 2017**Time:** 1 - 4 p.m.**Location:** OSSE, 810 First St. NE, Eighth Floor 806 A & B**Register by Web:** bit.ly/2iQJWC2**Sponsor(s):** Child & Family Services Agency (CFSA) and OSSE**Audience:** All teachers, assistant teachers, care givers, volunteers, substitutes, directors**Core Knowledge Area:** Health, Safety and Nutrition (CCDF Topic: Prevention of shaken baby syndrome and abusive head trauma)

Jan.

12

Ready To Learn**Units/Clock Hours:**
1.5 Professional Learning Units

Description: Learn how to use educational television content to bolster literacy education in the classroom. This workshop will introduce participants to at least 6-12 new children's books, and at the end of the workshop, participants get to choose a new children's book to keep.

Date: Thursday, Jan. 12, 2017**Time:** 1 - 2:30 p.m.**Location:** OSSE, 810 First St. NE, Eighth Floor 806 B**Register by Web:** bit.ly/2i1ojOj**Sponsor(s):** WETA and OSSE**Audience:** Childcare providers, teachers, after school staff**Core Knowledge Area:** Child Growth and Development

Jan.

14

**Building a Vibrant Early
Childhood Education Business****Units/Clock Hours:**
3 Professional Learning Units

Description: Participants will learn the basic financial systems that support a successful early childhood education business plan and learn how to interface with the banking institutions in order to sustain strong program operations.

Date: Saturday, Jan. 14, 2017**Time:** 10 a.m. - 1 p.m.**Location:** 209 Upshur St. NW, Washington, DC 20011**Register by Web:** 1.usa.gov/1Ss4wvj**Sponsor(s):** Better Futures, LLC and OSSE**Audience:** Current and potential ECE Providers, Directors and Family Home Providers**Core Knowledge Area:** Program Management: Operation and Evaluation

Jan.

17

How to Prevent and Control Infectious Diseases**Units/Clock Hours:**
3 Professional Learning Units**Description:** This session will provide an overview on how to prevent and control infectious diseases, including information on immunizations and influenza.**Date:** Tuesday, Jan. 17, 2017**Time:** 9 a.m. – 12 p.m.**Location:** OSSE, 810 First St. NE, Eighth Floor 806 A & B**Register by Web:** bit.ly/2i1eNuC**Sponsor(s):** Children's National Health System and OSSE**Audience:** All infant, toddler and preschool teachers, assistant teachers and directors**Core Knowledge Area:** Health, Safety and Nutrition (CCDF Topic: Prevention and control of infectious diseases)

Jan.

18

Observing and Assessing Young Children**Units/Clock Hours:**
3 Professional Learning Units**Description:** During this interactive session participants will learn how to objectively observe and document observations of children, and use this information to help plan classroom activities.**Date:** Wednesday, Jan. 18, 2017**Time:** 9:30 a.m. – 12:30 p.m.**Location:** OSSE, 810 First St. NE, Eighth Floor 806 A & B**Register by Web:** bit.ly/2jk7NuR**Sponsor(s):** OSSE**Audience:** Infant, toddler and preschool teachers, assistant teachers, administrators**Core Knowledge Area:** Observing, Documenting and Assessing to Support Young Children and Families

Jan.

19

Screen time: Does the Bad Outweigh the Good?**Units/Clock Hours:**
2 Professional Learning Units**Description:** There is no doubt about it! Children are growing up in a digital world. But, with all of this new technology, are we hurting our children more than we are helping? Come learn a best practice stance on technology for early learners and discuss the pros and cons of using technology in the classroom, as well as at home. Learn about current research in regards to children and screen time, the newest games to help children learn in any environment, and the latest apps and techniques to keep them safe all the while.**Date:** Thursday, Jan. 19, 2017**Time:** 10 a.m. - 12 p.m.**Location:** OSSE, 810 First St. NE, Eighth Floor 806 A & B**Register by Web:** bit.ly/2jkoje7**Sponsor(s):** OSSE**Audience:** Toddler and preschool teachers, administrators, before/after care staff**Core Knowledge Area:** Child Growth and Development

Jan.

19

Addressing the Impact of Parental Incarceration on Children, Families, Schools, and Communities**Units/Clock Hours:**
3 Professional Learning Units**Description:** Across the nation, community stakeholders, educators, and caregivers are exploring innovative strategies and approaches to unite families by linking parental incarceration to the promotion of healthy families and child development. Attendees will learn classroom strategies to help children and families cope with parental separation, at home and at school. In addition, attendees will also learn about and receive a copy of Sesame Street's Little Children, Big Challenges: Incarceration Tool Kit.**Date:** Thursday, Jan. 19, 2017**Time:** 1 - 4 p.m.**Location:** OSSE, 810 First St. NE, Eighth Floor 806 A & B**Register by Web:** bit.ly/2iKyTdn**Sponsor(s):** OSSE**Audience:** Teachers, assistant teachers, administrators**Core Knowledge Area:** Social-Emotional Development and Mental Health

Jan.
23
Administration of Medication (AOM) Training

Units/Clock Hours:
3 Professional Learning Units

Description: During this course, participants will discuss basic medication administration guidelines, how to properly handle and store medications, and proper documentation of the administration of medication.

Date: Monday, Jan. 23, 2017

Time: 9 a.m. – 12 p.m.

Location: OSSE, 810 First St. NE, Eighth Floor 806 A & B

Register by Web: bit.ly/2cV3dQW

Sponsor(s): Children's National Health System and OSSE

Audience: All infant, toddler and preschool teachers, assistant teachers and directors

Core Knowledge Area: Health, Safety and Nutrition (CCDF Topic: Administration of Medication)

Jan.
23
Precautions in Transporting Children

Units/Clock Hours:
2 Professional Learning Units

Description: This course provides basic knowledge of transportation regulations, and includes a demonstration on how to properly conduct a vehicle passenger check, the use of child safety restraints required by District law, proper loading, unloading, and monitoring of children. Participants will learn where to find vehicular first aid supplies, and how to conduct emergency procedures and response in the event of accidents or breakdowns.

Date: Monday, Jan. 23, 2017

Time: 1 - 3 p.m.

Location: OSSE, 810 First St. NE, Eighth Floor 806 A & B

Register by Web: bit.ly/2iZSiob

Sponsor(s): DC Department of Transportation and OSSE

Audience: All infant, toddler and preschool teachers, assistant teachers and directors who provide transportation of any kind (before and after school, field trips, etc.)

Core Knowledge Area: Health, Safety, and Nutrition (CCDF Topic: Precautions in transporting children)

Jan.
24
Infant Safe Sleep Practices

Units/Clock Hours:
2 Professional Learning Units

Description: Participants in this course will identify behaviors that increase the risk of SIDS and sleep related infant deaths, learn ways to reduce the risk of SIDS in child care settings, and learn how to communicate with parents and other caregivers about safe sleep practices. This course reflects the American Academy of Pediatrics' revised recommendations for a safe sleep environment.

Date: Tuesday, Jan. 24, 2017

Time: 10 a.m. – 12 p.m.

Location: 899 North Capitol St. NE, 3rd Floor

Register by Web: bit.ly/2iRebZK

Sponsor(s): DC Department of Health, Community Health Administration and OSSE

Audience: All teachers, assistant teachers, care givers, volunteers, substitutes, directors

Core Knowledge Area: Health, Safety and Nutrition (CCDF Topic: Sudden Infant Death Syndrome (SIDS) and use of safe sleep practices)

Jan.
24
Children and Fire/Fire Extinguisher Training

Units/Clock Hours:
2.5 Professional Learning Units

Description: Children and Fire: Reviews the basic characteristics of children who show interest in fire and how to refer a child to the juvenile firesetters program.

Fire Extinguisher Training: This session will identify the parts and function of a fire extinguisher and allow hands-on training on the use of a fire extinguisher.

Date: Tuesday, Jan. 24, 2017

Time: 1- 3:30 p.m.

Location: 1100 Fourth St. SW, Suite E-700

Register by Web: bit.ly/2i9nwI7 or

Email: Aleazor.taylor@dc.gov

Sponsor(s): DC Fire and Emergency Management Systems (DC FEMS) and OSSE

Audience: Teachers, administrators, program support/ staff

Core Knowledge Area: Health, Safety and Nutrition

Jan.

24

Stewards of Children**Units/Clock Hours:**

2 Professional Learning Units

Description: Participants will leave with practical skills they can use daily, and knowledge of ways their agency can implement policies to proactively reduce the risk of child sexual abuse.

Date: Tuesday, Jan. 24, 2017

Time: 5 – 7 p.m.

Location: 429 O St. NW, Washington, D.C., 20001

Register by Web: bit.ly/2iepjNA

or Email: stewards@safeshores.org

Sponsor(s): Safe Shores – The DC Children’s Advocacy Center and OSSE

Audience: Teachers, administrators, program support

Core Knowledge Area: Health, Safety, and Nutrition (CCDF Topic: Prevention of shaken baby syndrome and abusive head trauma)

Jan.

25

Creating Diversity in Early Learning Classrooms**Units/Clock Hours:**

2 Professional Learning Units

Description: In this session, participants will learn about and discuss methods of tying home cultures to classrooms in authentic ways, including language use, print rich environments and activities led by families. Attendees will have the opportunity to share their experiences with anti-biased approaches when interacting with parents and professionals.

Date: Wednesday, Jan. 25, 2017

Time: 1:30 – 3:30 p.m.

Location: OSSE, 810 First St. NE, Eighth Floor 806 B

Register by Web: bit.ly/2jd2kS6

Sponsor(s): Berna Artis, MA. Ed and OSSE

Audience: All early childhood educators

Core Knowledge Area: Diversity: Family, Language, Culture, and Society

Jan.

28

A Blueprint for Building a Vibrant Business**Units/Clock Hours:**

3 Professional Learning Units

Description: This highly interactive workshop helps participants analyze their financial system, program operation, pricing model and obtain the required DC government licenses. Participants will learn how to meet the demands of developing a high performing early care and education business.

Date: Saturday, Jan. 28, 2017

Time: 8:30 – 11:30 a.m.

Location: 209 Upshur St. NW, Washington, DC 20011

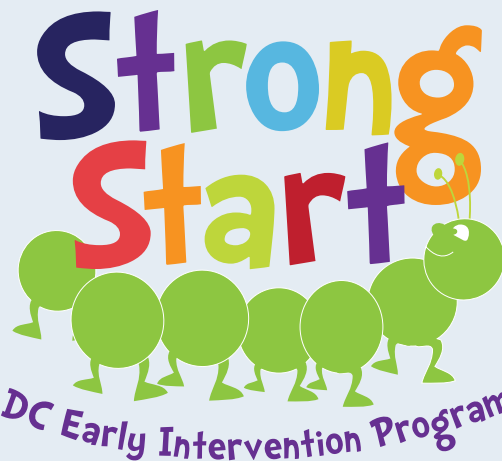
Register by Web: bit.ly/2iNcL05

Sponsor(s): Better Futures, LLC and OSSE

Audience: Directors, owners and prospective owners

Core Knowledge Area: Program Management: Operation and Evaluation





Open to children ages 6 mos. - 3 yrs. • Free to residents of DC • Pre-registration is required

Playgroups are available Monday - Thursday and on selected Saturdays throughout the year across seven different locations within the Washington, DC area.

2016 – 2017 Strong Start Play Group Schedule

DAY	LOCATION	SESSION(S)(in months)
MONDAY	TENLEY-FRIENDSHIP LIBRARY 4450 Wisconsin Ave. NW – across from the Tenley Metro Station	12 – 24: 10 – 11 a.m. 24 – 36: 11 – 12 p.m.
	COLUMBIA HEIGHTS 1371 Harvard St. NW – on the corner of 14 th St. and Harvard St.	12 – 24: 10 – 11 a.m. 6 – 12: 11:30 a.m. – 12:15 p.m.
TUESDAY	ANACOSTIA NEIGHBORHOOD LIBRARY 1800 Good Hope Rd. SE	24 – 36: 10 – 11 a.m. 12 – 24: 11 a.m. – 12 p.m.
	SOUTHWEST LIBRARY 900 Wesley Pl. SW	24 – 36: 10 – 11 p.m. 12 – 24: 11:15 a.m. – 12:15 p.m.
WEDNESDAY	HILL CENTER AT THE OLD NAVAL HOSPITAL 921 Pennsylvania Ave. SE	24 – 36: 9 – 10:15 a.m. 12 – 24: 10:30 – 11:30 a.m.
	COLUMBIA HEIGHTS 1371 Harvard St. NW – on the corner of 14 th St. and Harvard St.	6 – 12: 11:45 a.m. – 12:30 p.m. 24 – 36: 10 – 11:00 a.m. 12 – 24: 11:15 a.m. – 12:15 p.m.
SATURDAY (**2x/month Spanish or 1x/month Developmental Inclusive)	MARTHA'S TABLE (2x/month) 2114 14 th St. NW	3+ & 24 - 36: 9 – 10:15 a.m. 12 – 24: 10:30 – 11:30 a.m.
	COLUMBIA HEIGHTS (2x/month Spanish) 1371 Harvard St. NW – on the corner of 14 th St. and Harvard St.	24 – 36+: 10:30 – 11:30 a.m. 24 – 36: 10 – 11 a.m.
	COLUMBIA HEIGHTS (1x/month) 1371 Harvard St. NW – on the corner of 14 th St. and Harvard St.	12 – 24: 11:15 a.m. – 12:15 p.m.

CDA Program

(Child Development Associate)

About us

CentroNía's Child Development Associate (CDA) training program is designed to equip our candidates with the knowledge needed to prepare for the CDA credentialing process administered by the Council for Professional Recognition.

Our CDA training program consists of seven (7) training modules that add up to 150 hours of coursework during a 6-month period. By the end of the program, candidates will be able to meet all the application requirements needed to obtain a CDA credential.

We specialize in both infants/toddlers and preschool - center based specializations.



What we offer.....

- * Free classes
(150 hours of early childhood education training)
- * Free materials
(CDA books and other resources)
- * Free CPR and First Aid certification
- * Assistance with the completion of the Professional Portfolio
- * Assistance with the application process and a
- * Scholarship to cover 80% of the Council for Professional Recognition's application fee

Requirements

- * Complete the application form
(find it at the front desk or our website)
- * Bring a copy of your high school diploma or GED
- * Be working or volunteering with children at a licensed center in the District of Columbia
(a letter from your center's director will be required)



For more information about the program and/or questions, please contact:

Mario Platero
 mplatero@centronia.org
 202-332-4200 ext. 1142

Our classes are FREE thanks to the support of the Office of the State Superintendent of Education (OSSE.)





Programa CDA (Asociado en Desarrollo Infantil)

Acerca de nosotros.....●

El programa de capacitación para obtener el Asociado en Desarrollo Infantil (CDA) de CentroNía está diseñado para equipar a nuestros estudiantes con los conocimientos que necesitan para prepararse para el proceso de acreditación CDA administrado por el Concilio para el Reconocimiento Profesional.

Nuestro programa de capacitación CDA consiste de siete (7) módulos de capacitación que suman 150 horas durante un lapso de 6 meses. Al final de este programa, los candidatos CDA serán capaces de cumplir con todos los requisitos de aplicación para obtener una credencial de CDA.

Nos especializamos en dos tipos de CDA para centros: Infantes/Toddlers y Preescolares.

Lo que ofrecemos.....●

- * Clases gratuitas (150 horas de educación infantil)
- * Materiales gratis (libros CDA y otros recursos)
- * Certificación CPR y Primeros Auxilios gratis
- * Asistencia en la creación del Portafolio Profesional
- * Asistencia en el proceso de solicitud y verificación y
- * Una beca para cubrir el 80% de la cuota de aplicación del Concilio para el Reconocimiento Profesional



Requerimientos●

- * Completar el formulario de aplicación (Puede encontrarle en recepción o sitio web)
- * Presentar su diploma de secundaria o GED (puede ser de su país natal)
- * Trabajar o ser voluntario(a) con niños en un centro infantil autorizado en el Distrito de Columbia (una carta de su director(a) será requerida)

Para más información sobre el programa y/o preguntas, póngase en contacto con:

Mario Platero
mplatero@centronia.org
o llame al 202-332-4200 ext. 1142

Nuestras clases son GRATIS, gracias al apoyo de la Oficina del Superintendente Estatal de Educación (OSSE).



FEBRUARY AT-A-GLANCE

February 7	Community Emergency Response Team (CERT) Training
February 7	Food Allergy Prevention and Response
February 9	Developmental Milestones for 3-5 Year Olds
February 9	Starting Strong: Nutrition for Infants and Toddlers
February 10	Nutrition for Early Learners
February 10	Bystanders Protecting Children from Boundary Violations and Sexual Abuse
February 10	Child Abuse Prevention and Mandatory Reporter Training
February 11	Building on Your Business Strengths
February 13	Emergency Preparedness
February 14	Adult/Pediatric First Aid and CPR
February 14	DC Common Core Early Learning Standards 101
February 14	Food Allergy Prevention and Response in Early Care and Preschool Settings
February 15	Addressing Challenging Behaviors
February 15	Stewards of Children
February 16	DC Common Core Early Learning Standards 201
February 16	Parents, Family and Community Engagement - Measuring What Matters
February 16	How to Prevent and Control Infectious Diseases
February 17	Building and Physical Premises Safety
February 18	Administration of Medication
February 22	Children & Fire/Fire Extinguisher Training
February 22	Building Partnerships with Parents and Raising Confident Boys
February 23	DC Common Core Early Learning Standards 201
February 23	Ready to Learn
February 24	Talking with Children about Safety from Sexual Abuse
February 24	Developmentally Appropriate Practice (DAP) for Infants and Toddlers
February 27	Administration of Medication (AOM) Training
February 27	Precautions in Transporting Children
February 28	Infant Safe Sleep Practices

FEBRUARY OFFERINGS

Feb.
7

Community Emergency Response Team (CERT) Training

Units/Clock Hours:
6 Professional Learning Units

Description: This course teaches basic disaster response skills, fire safety, light search and rescue, CERT team organization, disaster psychology, terrorism awareness, and disaster medical operations.

Date: Tuesday, Feb. 7, 2017

Time: 9 a.m. – 4 p.m.

Location: OSSE, 810 First St. NE, Eighth Floor 806 A & B

Register by Web: bit.ly/2i18L5V

Sponsor(s): Serve DC and OSSE

Audience: All caregivers, teachers, assistant teachers and directors

Core Knowledge Area: Health, Safety and Nutrition (CCDF Topic: Emergency preparedness and response planning)

Feb.
7

Food Allergy Prevention and Response

Units/Clock Hours:
3 Professional Learning Units

Description: This session will discuss the preparation and handling of food for children of all ages, including the consumption of formula, human milk, and solid foods. Participants will also learn how to recognize and respond to food allergies and how to create and follow individual care plans for children with food allergies.

Date: Tuesday, Feb. 7, 2017

Time: 10 a.m. - 1 p.m.

Location: OSSE, 810 First St. NE, Ninth Floor 9014

Register by Web: bit.ly/2dHOFUd

Sponsor(s): Children's National Health System and OSSE

Audience: All infant, toddler and preschool teachers, assistant teachers and directors

Core Knowledge Area: Health, Safety and Nutrition (CCDF Topic: Prevention and response to food allergies)

Feb.
9

Developmental Milestones for 3-5 Year Olds

Units/Clock Hours:
2 Professional Learning Units

Description: This workshop provides an overview of typical developmental milestones for children between the ages of three and five in the following domains: communication, gross motor, fine motor, social-emotional, cognitive. It also provides sample intervention strategies for each domain, and the opportunity to create your own.

Date: Thursday, Feb. 9, 2017

Time: 9 - 11 a.m.

Location: OSSE, 810 First St. NE, Eighth Floor 806 A & B

Register by Web: bit.ly/2iZFJJL

Sponsor(s): Early Stages, DC Public Schools and OSSE

Audience: Parents, teachers, healthcare providers, childcare staff, community members

Core Knowledge Area: Child Growth and Development

Feb.
9

Starting Strong: Nutrition for Infants and Toddlers

Units/Clock Hours:
2.5 Professional Learning Units

Description: This session will help participants better understand developmental readiness for introducing solid foods to infants and the process of transitioning to table foods. Participants will also be provided with ways to promote good nutrition that will prepare children for a lifetime of growing and learning. This two and a half clock hour training will also cover the Child and Adult Care Food Program (CACFP) infant meal pattern and feeding guidelines, which all licensed providers are required to follow.

Date: Thursday, Feb. 9, 2017

Time: 9:30 a.m. - 12:00 p.m.

Location: OSSE, 810 First St. NE, Fourth Floor 4002

Register by Web: bit.ly/2iL47Bc

Sponsor(s): OSSE – Wellness and Nutrition

Audience: All caregivers, teachers, assistant teachers and directors

Core Knowledge Area: Health, Safety and Nutrition (CCDF Topic: Nutrition and physical activity)

Feb.

10

Nutrition for Early Learners**Units/Clock Hours:**

2.5 Professional Learning Units

Description: Good nutrition is a key for supporting healthy development and preparing children for school. This training session will teach you the basics of good nutrition for toddlers and preschoolers, as well as planning and preparing nutritious meals with a focus on meeting the Child and Adult Care Food Program (CACFP) meal pattern requirements, which all licensed providers are required to follow. This training will also cover best practices for creating positive meal times and implementing family-style meal service.

Date & Time: Friday, Feb. 10, 2017

Time: 9:30 a.m. – 12 p.m.

Location: OSSE, 810 First St. NE, Eighth Floor, 806 A & B

Register by Web: bit.ly/2iNdT3M

Sponsor(s): OSSE – Wellness and Nutrition

Audience: All caregivers, teachers, assistant teachers and directors

Core Knowledge Area: Health, Safety and Nutrition
(CCDF Topic: Nutrition and physical activity)

Feb.

10

Child Abuse Prevention and Mandatory Reporter Training**Units/Clock Hours:**

3 Professional Learning Units

Description: Mandatory Reporter Training contains definitions, examples, and signs of child abuse and neglect, numerous resources and DC legal codes, helpful tips for mandatory reporters, and interactive learning checks to confirm you learned important concepts. After you complete this training, you should be able to understand your legal obligations as a mandatory reporter; define the types of child abuse and neglect; recognize signs of child abuse and neglect; identify groups of children who may be at a higher risk for abuse or neglect; and more.

Date: Friday, Feb. 10, 2017

Time: 1 – 4 p.m.

Location: OSSE, 810 First St. NE, Eighth Floor 806 A & B

Register by Web: bit.ly/2i4v5Tv

Sponsor(s): CFSA and OSSE

Audience: All teachers, assistant teachers, care givers, volunteers, substitutes, directors

Core Knowledge Area: Health, Safety and Nutrition
(CCDF Topic: Prevention of shaken baby syndrome and abusive head trauma)

Feb.

10

Bystanders Protecting Children from Boundary Violations and Sexual Abuse**Units/Clock Hours:**

1 Professional Learning Unit

Description: This supplemental training builds on the content presented in the Stewards of Children training and focuses on the skill of bystander intervention. Participants will learn skills for intervention when someone crosses a child's boundaries.

Date: Friday, Feb. 10, 2017

Time: 9:30 a.m. - 10:30 a.m.

Location: 429 O St. NW, Washington, D.C. 20001

Register by Web: bit.ly/2iaTCGH
or Email: stewards@safeshores.org

****Must have completed Stewards of Children training to be eligible.****

Sponsor(s): Safe Shores – The DC Children's Advocacy Center and OSSE

Audience: Teachers, administrators, program support

Core Knowledge Area: Health, Safety, and Nutrition

Feb.

11

Building on Your Business Strengths**Units/Clock Hours:**

3 Professional Learning Units

Description: Participants will learn how to streamline their back office operations, organize financial systems and meet professional development needs to continuously improve their child care business.

Date: Saturday, Feb. 11, 2017

Time: 10 a.m. – 1 p.m.

Location: 209 Upshur St. NW, Washington, DC 20011

Register by Web: bit.ly/2i4EaMd

Sponsor(s): Better Futures, LLC and OSSE

Audience: Current and potential ECE Providers, Directors and Family Home Providers

Core Knowledge Area: Program Management: Operation and Evaluation

Feb.

13

Emergency Preparedness**Units/Clock Hours:**

2 Professional Learning Units

Description: Being prepared for emergencies can make a big difference as to whether or not the children in your care and the staff in your program remain safe. In this course, participants will learn about the necessary steps a program should take to ensure preparedness in the event of an emergency, as well as effective strategies to communicate the emergency plan to children, parents, and staff.

Date: Monday, Feb. 13, 2017

Time: 9 – 11 a.m.

Location: OSSE, 810 First St. NE, Eighth Floor 806 A & B

Register by Web: bit.ly/2dByvKb

Sponsor(s): DC Emergency Management Systems/ Children's National Health System/Health Resources and Services Administration (HRSA) and OSSE

Audience: All caregivers, teachers, assistant teachers and directors

Core Knowledge Area: Health, Safety and Nutrition (CCDF Topic: Emergency preparedness and response planning)

Feb.

14

DC Common Core Early Learning Standards 101**Units/Clock Hours:**

3 Professional Learning Units

Description: This highly interactive training will provide participants with an understanding of the fundamentals of the District of Columbia Common Core Early Learning Standards (DCCCELS) in order to use the standards to build a foundation for high-quality care and education for all children from birth to pre-kindergarten. The training will use group discussions, hands-on activities, and video clips to allow participants to explore the components and structure of the DCCCELS and develop an understanding of developmentally appropriate programming for infants, toddlers and preschool children in the beginning stages of effective implementation.

Date: Tuesday, Feb. 14, 2017

Time: 9:30 a.m. – 12:30 p.m.

Location: OSSE, 810 First St. NE, Eighth Floor 806 A & B

Register by Web: bit.ly/2i0VXpe

Sponsor(s): OSSE

Audience: All infant, toddler and preschool teachers, assistant teachers and directors

Core Knowledge Area: Child Growth and Development

Feb.

14

Adult/Pediatric First Aid and CPR**Units/Clock Hours:**

7 Professional Learning Units

Description: With an emphasis on hands-on-learning, the First Aid/CPR/AED courses give participants the skills to save a life. Participants will also learn how diseases are transmitted and will discover preventative measures for limiting the spread of disease in child care facilities.

Date: Tuesday, Feb. 14, 2017

Time: 9 a.m. - 5 p.m.

Location: OSSE, 810 First St. NE, Third Floor Grand Hall Side B

Register by Web: bit.ly/2i0mORT

or Email: osse.dcchildcareconnections@dc.gov

Sponsor(s): The Coles Group and OSSE

Audience: All staff members involved in providing direct care to children (teachers, assistant teachers, care givers, volunteers, substitutes, directors, etc.)

Core Knowledge Area: Health, Safety and Nutrition (CCDF Topic: First-aid and cardiopulmonary resuscitation)

Feb.

14

Food Allergy Prevention and Response in Early Care and Preschool Settings**Units/Clock Hours:**

2 Professional Learning Units

Description: This training will explore the food allergy procedures that should be in place when caring for children in early care and preschool settings according to research-based, Department of Health, Centers for Disease Control and Prevention (CDC) guidelines, and the rights of children with food allergies.

After this training, participants should be able to define anaphylaxis, identify common food allergies and their signs and symptoms, outline treatment and management options, learn how to create and follow individual care plans for each child with a food allergy, create and implement a detailed treatment plan in the event of an allergic reaction, and apply and understand best practices for minimizing risks and exposure.

Date: Tuesday, Feb. 14, 2017

Time: 1 – 3 p.m.

Location: OSSE, 810 First St. NE, Eighth Floor 806 A & B

Register by Web: bit.ly/2iTWecU

Sponsor(s): OSSE Wellness and Nutrition

Audience: All staff members involved in providing direct care to children (teachers, assistant teachers, care givers, volunteers, substitutes, directors, etc.)

Core Knowledge Area: Health, Safety and Nutrition (CCDF Topic: Prevention and response to food allergies)

Feb.

15

Addressing Challenging Behaviors**Units/Clock Hours:**

3 Professional Learning Units

Description: This workshop gleans materials from the Center on the Social and Emotional Foundations for Early Learning to help teachers understand why children behave the way they do. It will help teachers develop universal strategies to address behavior, as well as targeted intervention.

Date: Wednesday, Feb. 15, 2017

Time: 9 a.m. – 12 p.m.

Location: OSSE, 810 First St. NE, Eighth Floor 806 A & B

Register by Web: bit.ly/2iNZDtv

Sponsor(s): Early Stages (DC Public Schools) and OSSE

Audience: Teachers, childcare staff of 3-5 year olds

Core Knowledge Area: Social-Emotional Development and Mental Health

Feb.

15

Stewards of Children**Units/Clock Hours:**

2 Professional Learning Units

Description: Participants will leave with practical skills they can use daily, and knowledge of ways their agency can implement policies to proactively reduce the risk of child sexual abuse.

Date: Wednesday, Feb. 15, 2017

Time: 5 – 7 p.m.

Location: 429 O St. NW, Washington, D.C., 20001

Register by Web: bit.ly/2iepjNA
or Email: stewards@safeshores.org

Sponsor(s): Safe Shores – The DC Children’s Advocacy Center and OSSE

Audience: Teachers, administrators, program support

Core Knowledge Area: Health, Safety, and Nutrition (CCDF Topic: Prevention of shaken baby syndrome and abusive head trauma)

Feb.

16

DC Common Core Early Learning Standards 201**Units/Clock Hours:**

3 Professional Learning Units

Description: This highly interactive training will provide participants with a deeper dive into the District of Columbia Common Core Early Learning Standards (DCCCELS) to build a foundation for high-quality care and education for all children from birth to pre-kindergarten. The training will use group discussions, hands-on activities, and video clips to allow participants to explore the four components of quality lesson planning and teaching: Planning, Implementation, Observation, and Assessment.

Date: Thursday, Feb. 16, 2017

Time: 9:30 a.m. – 12:30 p.m.

Location: OSSE, 810 First St. NE, Eighth Floor 806 A

Register by Web: bit.ly/2i4Fu1D

Sponsor(s): OSSE

Audience: All infant, toddler and preschool teachers, assistant teachers and directors

Core Knowledge Area: Child Growth and Development

Feb.

16

Parent, Family and Community Engagement - Measuring What Matters**Units/Clock Hours:**

3 Professional Learning Units

Description: Families come in our programs with a wide range of backgrounds, experiences, and circumstances. Every family is different and unique in its own way. An active family engagement program can help centers and schools improve your children’s school readiness and create lasting change for families.

Date: Thursday, Feb. 16, 2017

Time: 1 – 4 p.m.

Location: OSSE, 810 First St. NE, Eighth Floor 806 B

Register by Web: bit.ly/2jnVqh3

Sponsor(s): OSSE

Audience: Family service workers; administrators

Core Knowledge Area: Building Family and Community Relationships

Feb.

16

How to Prevent and Control Infectious Diseases**Units/Clock Hours:**
3 Professional Learning Units

Description: This session will provide an overview on how to prevent and control infectious diseases, including information on immunizations and influenza.

Date: Thursday, Feb. 16, 2017

Time: 12:30 – 3:30 p.m.

Location: OSSE, 810 First St. NE, Eighth Floor 806 A

Register by Web: bit.ly/2i4DhTz

Sponsor(s): Children's National Health System and OSSE

Audience: All infant, toddler and preschool teachers, assistant teachers and directors

Core Knowledge Area: Health, Safety, and Nutrition (CCDF Topic: Prevention and control of infectious diseases)

Feb.

18

Administration of Medication**Units/Clock Hours:**
2 Professional Learning Units

Description: This training will introduce participants to basic medication administration guidelines, how to properly handle, administer and store medications and proper documentation of medication. This session will review the most prevalent common childhood medications and identify adverse reactions to medications.

Date: Saturday, Feb. 18, 2017

Time: 10 a.m. – 12 p.m.

Location: 209 Upshur St. NW, Washington, DC 20011

Register by Web: bit.ly/2iogPTTr

Sponsor: Kids Comprehensive Services (KCS) and OSSE

Audience: All infant, toddler and preschool teachers, assistant teachers and directors

Core Knowledge Area: Health, Safety and Nutrition (CCDF Topic: Administration of Medication)

Feb.

17

Building and Physical Premises Safety**Units/Clock Hours:**
3 Professional Learning Units

Description: This training will help organizations identify where they need to make changes and build capacity to ensure children are healthy and safe in their care while complying with health and safety regulations.

Date: Friday, Feb. 17, 2017

Time: 9:30 a.m. - 12:30 p.m.

Location: United Planning Organization, 801 Rhode Island Ave. NE, Washington, DC 20001

Register by Web: bit.ly/2i2xomN

Sponsor(s): United Planning Organization and OSSE

Audience: Directors, administrators, program support, teachers, assistant teachers

Core Knowledge Area: Health, Safety, and Nutrition (CCDF Topic: Building and physical premises safety)

Feb.

22

Children & Fire/Fire Extinguisher Training**Units/Clock Hours:**
2.5 Professional Learning Units

Description: Children & Fire: reviews the basic characteristics of children who show interest in fire and how to refer a child to the Juvenile Firesetters Program. Fire Extinguisher Training: identifies the parts and function of a fire extinguisher and allow hands-on training on the use of a fire extinguisher.

Date: Wednesday, Feb. 22, 2017

Time: 1 – 3:30 p.m.

Location: 1100 4th St. SW, Suite E-70, Washington, DC 20024

Register by Web: bit.ly/2iaWEe4
or Email: aleazor.taylor@dc.gov

Sponsor(s): DC Fire & EMS Department and OSSE

Audience: Teachers, administrators, program support staff

Core Knowledge Area: Health, Safety, and Nutrition

Feb.

22

Building Partnership with Parents and Raising Confident Boys**Units/Clock Hours:**

2 Professional Learning Units

Description: During this training, participants will discuss how increased male involvement supports the healthy development of children. Participants will also be introduced to promising practices that will help groom confident and resilient boys into successful men.

Date: Wednesday, Feb. 22, 2017

Time: 2 – 4 p.m.

Location: OSSE, 810 First St. NE, Eighth Floor 806 B

Register by Web: bit.ly/2iox3Md

Sponsor: OSSE

Audience: Preschool teachers, pre-k, administrators, program support/staff

Core Knowledge Area: Social-Emotional Development and Mental Health

Feb.

23

DC Common Core Early Learning Standards 201**Units/Clock Hours:**

3 Professional Learning Units

Description: This highly interactive training will provide participants with a deeper dive into the District of Columbia Common Core Early Learning Standards (DCCCELS) to build a foundation for high-quality care and education for all children from birth to pre-kindergarten. The training will use group discussions, hands-on activities, and video clips to allow participants to explore the four components of quality lesson planning and teaching: Planning, Implementation, Observation, and Assessment.

Date: Thursday, Feb. 23, 2017

Time: 9:30 a.m. - 12:30 p.m.

Location: OSSE, 810 First St. NE, Eighth Floor 806 A & B

Register by Web: bit.ly/2i4JT10

Sponsor(s): OSSE

Audience: All infant, toddler and preschool teachers, assistant teachers and directors

Core Knowledge Area: Child Growth and Development

Feb.

23

Ready To Learn**Units/Clock Hours:**

1.5 Professional Learning Units

Description: Learn how to use educational television content to bolster literacy education in the classroom. This workshop will introduce participants to at least 6-12 new children's books, and at the end of the workshop, participants get to choose a new children's book to keep.

Date: Thursday, Feb. 23, 2017

Time: 1 - 2:30 p.m.

Location: OSSE, 810 First St. NE, Eighth Floor 806 A & B

Register by Web: bit.ly/2i2Di7l

Sponsor(s): WETA and OSSE

Audience: Childcare providers, teachers, after school staff

Core Knowledge Area: Child Growth and Development

Feb.

24

Talking with Children About Safety from Sexual Abuse**Units/Clock Hours:**

1 Professional Learning Unit

Description: This supplemental training builds upon content presented in the prerequisite Stewards of Children training session. Participants will learn ways to discuss sex and equip children with knowledge to protect themselves.

Date: Friday, Feb. 24, 2017

Time: 9:30 - 10:30 a.m.

Location: 429 O. St. NW, Washington, D.C. 20001

Register by Web: bit.ly/2ja9JT8
or Email: stewards@safeshores.org

****Individuals must have completed Stewards of Children training to be eligible.****

Sponsor(s): Safe Shores – The DC Children's Advocacy Center and OSSE

Audience: Teachers, administrators, program support, assistant teachers, family child care home providers

Core Knowledge Area: Health, Safety, and Nutrition

Feb.
24**Developmentally Appropriate Practice (DAP) for Infants and Toddlers****Units/Clock Hours:**
2 Professional Learning Units

Description: Attendees will explore DAPs and reflect on their practices. Sample activities focusing on infants and toddlers will be shared following discussion on the developmental needs of young children and how to best meet their needs for optimal results and child outcomes.

Date: Friday, Feb. 24, 2017

Time: 1 – 3 p.m.

Location: OSSE, 810 First St. NE, Eighth Floor 806 A & B

Register by Web: bit.ly/2iO4gDN

Sponsor(s): Berna Artis, MA. Ed. and OSSE

Audience: Infant and toddler educators

Core Knowledge Area: Child Growth and Development

Feb.
27**Administration of Medication (AOM) Training****Units/Clock Hours:**
3 Professional Learning Units

Description: During this course, participants will discuss basic medication administration guidelines, how to properly handle and store medications, and proper documentation of the administration of medication.

Date: Monday, Feb. 27, 2017

Time: 9 a.m. – 12 p.m.

Location: OSSE, 810 First St. NE, Eighth Floor 806 A & B

Register by Web: bit.ly/2e6hIS3

Sponsor(s): Children's National Health System and OSSE

Audience: All infant, toddler and preschool teachers, assistant teachers and directors

Core Knowledge Area: Health, Safety and Nutrition (CCDF Topic: Administration of Medication)

Feb.
27**Precautions in Transporting Children****Units/Clock Hours:**
2 Professional Learning Units

Description: This course provides basic knowledge of transportation regulations, and includes a demonstration on how to properly conduct a vehicle passenger check, the use of child safety restraints required by District law, proper loading, unloading, and monitoring of children. Participants will learn where to find vehicular first aid supplies, and how to conduct emergency procedures and response in the event of accidents or breakdowns.

Date: Monday, Feb. 27, 2017

Time: 11 a.m. – 1 p.m.

Location: OSSE, 810 First St. NE, Ninth Floor 9014

Register by Web: bit.ly/2e6hIS3

Sponsor(s): DC Department of Transportation and OSSE

Audience: All infant, toddler and preschool teachers, assistant teachers and directors who provide transportation of any kind (before and after school, field trips, etc.)

Core Knowledge Area: Health, Safety, and Nutrition (CCDF Topic: Precautions in transporting children)

Feb.
28**Infant Safe Sleep Practices****Units/Clock Hours:**
2 Professional Learning Units

Description: Participants in this course will identify behaviors that increase the risk of SIDS and sleep related infant deaths, learn ways to reduce the risk of SIDS in child care settings, and learn how to communicate with parents and other caregivers about safe sleep practices. This course reflects the American Academy of Pediatrics' revised recommendations for a safe sleep environment.

Date: Tuesday, Feb. 28, 2017

Time: 10 a.m. – 12 p.m.

Location: 899 North Capitol St. NE, 3rd Floor

Register by Web: bit.ly/2iQ1LPn

Sponsor(s): District Department of Health, Community Health Administration and OSSE

Audience: All teachers, assistant teachers, care givers, volunteers, substitutes, directors

Core Knowledge Area: Health, Safety and Nutrition (CCDF Topic: Sudden Infant Death Syndrome (SIDS) and use of safe sleep practices)



Learn DC Creating Opportunity

SCHOOL PROFILES CLASSROOMS EARLY CHILDHOOD CHILD CARE FINES

LearnDC is a one-stop source for information and resources about education that create opportunities for DC students in college, careers and life.

SCHOOL PROFILES
Get exploring information about local schools.

CLASSROOMS
Resources about the knowledge and skills that are taught in classrooms support connections about learning and college and career success.

EARLY CHILDHOOD
Strategies and services for supporting the positive development of young children, from a parent's perspective on early child care and career success.

1-8 News Program 3-5 News 3-8 News

EVERY DECISION WE MAKE IMPACTS THE FUTURE.

LearnDC empowers students, parents, educators and communities with the knowledge they need - from information about caring for a young child to tips for applying to your local college.

WHAT'S HAPPENING

- 2014 DC CAS RESULTS AVAILABLE
- OSSE TO MOVE FORWARD WITH PARCC ASSESSMENT
- 300 NEW INFANT/TODDLER SLOTS CREATED BY DISTRICT

An Online Community of Educational Learning and Discovery

Start learning today at LearnDC.org

Learn DC.org empowers students, parents, educators and communities with the knowledge they need to be successful. LearnDC.org offers a wealth of data on local schools, including student achievement and school performance, and provides resources for parents seeking quality child care.

An Initiative of the Office of the State Superintendent of Education



osse.dc.gov

facebook.com/ossedc

@OSSEDC

202.727.6436



MARCH AT-A-GLANCE

March 3	Be an Oral Health Champion
March 4	Sustain Your Business with Strategic Planning
March 7	Adult/Pediatric First Aid and CPR
March 9	Developmental Milestones for 3-5 Year Olds
March 9	Starting Strong: Nutrition for Infants and Toddlers
March 10	Nutrition for Early Learners
March 10	Child Sexual Abuse and the Commercial Exploitation of Children
March 10	Child Abuse Prevention and Mandatory Reporter Training
March 14	Community Emergency Response Team (CERT) Training
March 14	Food Allergy Prevention and Response
March 15	Overview of Special Education
March 15	Food Allergy Prevention and Response in Early Care and Preschool Settings
March 15	Stewards of Children
March 16	Building a Solid Foundation: Social Emotional Development in Young Children
March 16	Ready to Learn
March 17	Building and Physical Premises Safety
March 18	Administration of Medication
March 20	Emergency Preparedness
March 20	Precautions in Transporting Children
March 21	How to Prevent and Control Infectious Diseases
March 21	Children & Fire/Fire Extinguisher Training
March 23	Act Early: When Children Fall Behind in their Developmental Milestones
March 24	Healthy Touch for Children and Youth
March 27	Administration of Medication (AOM) Training
March 28	Infant Safe Sleep Practices

MARCH OFFERINGS

Mar.

3

Be an Oral Health Champion

Units/Clock Hours:

1 Professional Learning Unit

Description: Pain from dental conditions may interfere with nutrition, sleep, social engagement, and other activities that impact a child's long-term physical and psychosocial development. This session discusses prevention, and common oral health conditions that affect young children and their families. Participants will learn strategies for increasing their engagement with families and children about oral health issues and help them identify clinical resources in the local community.

Date: Friday, March 3, 2017

Time: 11 a.m. – 12 p.m.

Location: OSSE, 810 First St. NE, Third Floor Grand Hall Side B

Register by Web: 1.usa.gov/28YIXYX

Sponsor(s): DC Department of Health and OSSE

Audience: Infant, toddler and preschool teachers, administrators

Core Knowledge Area: Health, Safety & Nutrition

Mar.

4

Sustain Your Business with Strategic Planning

Units/Clock Hours:

3 Professional Learning Units

Description: During this workshop participants will create a strategic visioning document and learn about financing options that will sustain and grow their business.

Date: Saturday, March 4, 2017

Time: 10 a.m. – 1 p.m.

Location: 209 Upshur St. NW, Washington, DC 20011

Register by Web: bit.ly/2joAczG

Sponsor(s): Better Futures, LLC and OSSE

Audience: Current and potential ECE providers, directors and Family child care home providers

Core Knowledge Area: Program Management: Operation and Evaluation

Mar.

7

Adult/Pediatric First Aid and CPR

Units/Clock Hours:

7 Professional Learning Units

Description: With an emphasis on hands-on-learning, the First Aid/CPR/AED courses give participants the skills to save a life. Participants will also learn how diseases are transmitted and will discover preventative measures for limiting the spread of disease in child care facilities.

Date: Tuesday, March 7, 2017

Time: 9 a.m. - 5 p.m.

Location: OSSE, 810 First St. NE, Eighth Floor 806 A & B

Register by Web: bit.ly/2iaVFKw

or Email: osse.dcchildcareconnections@dc.gov

Sponsor(s): The Coles Group and OSSE

Audience: All staff members involved in providing direct care to children (teachers, assistant teachers, care givers, volunteers, substitutes, directors, etc.)

Core Knowledge Area: Health, Safety and Nutrition (CCDF Topic: First-aid and cardiopulmonary resuscitation)

Mar.

9

Developmental Milestones for 3-5 Year Olds

Units/Clock Hours:

2 Professional Learning Units

Description: This workshop provides an overview of typical developmental milestones for children between the ages of three and five in the following domains: communication, gross motor, fine motor, social-emotional, cognitive. It also provides sample intervention strategies for each domain, and the opportunity to create your own.

Date: Thursday, March 9, 2017

Time: 9 - 11 a.m.

Location: OSSE, 810 First St. NE, Eighth Floor 806 A & B

Register by Web: bit.ly/2i1ssDn

Sponsor(s): Early Stages, DC Public Schools and OSSE

Audience: Parents, teachers, healthcare providers, childcare staff, community members

Core Knowledge Area: Child Growth and Development

Mar.

9

Starting Strong: Nutrition for Infants and Toddlers**Units/Clock Hours:**
2.5 Professional Learning Units

Description: This session will help participants better understand developmental readiness for introducing solid foods to infants and the process of transitioning to table foods. Participants will also be provided with ways to promote good nutrition that will prepare children for a lifetime of growing and learning. This two and a half clock hour training will also cover the Child and Adult Care Food Program (CACFP) infant meal pattern and feeding guidelines, which all licensed providers are required to follow.

Date: Thursday, March 9, 2017**Time:** 9:30 a.m. - 12:00 p.m.**Location:** OSSE, 810 First St. NE, Third Floor Grand Hall Side A**Register by Web:** bit.ly/2ip372l**Sponsor(s):** OSSE – Wellness and Nutrition**Audience:** Infant, toddler, pre-k, teachers, administrators**Core Knowledge Area:** Health, Safety and Nutrition (CCDF Topic: Nutrition and physical activity)

Mar.

10

Child Sexual Abuse and the Commercial Exploitation of Children**Units/Clock Hours:**
1 Professional Learning Unit

Description: This supplemental training builds on content in Stewards of Children. Participants will receive an introduction to the concept of commercial exploitation of children and its relation to child sexual abuse prevention.

Date: Friday, March 10, 2017**Time:** 9:30 - 10:30 a.m.**Location:** 429 O. St. NW, Washington, D.C. 20001**Register by Web:** bit.ly/2jvalq3
or Email: stewards@safeshores.org

Individuals must have completed Stewards of Children training to be eligible.

Sponsor(s): Safe Shores – The DC Children’s Advocacy Center and OSSE**Audience:** Teachers, assistant teachers, administrators, program support**Core Knowledge Area:** Health, Safety, and Nutrition

Mar.

10

Nutrition for Early Learners**Units/Clock Hours:**
2.5 Professional Learning Units

Description: Good nutrition is a key for supporting healthy development and preparing children for school. This training session will teach you the basics of good nutrition for toddlers and preschoolers as well as planning and preparing nutritious meals with a focus on meeting the Child and Adult Care Food Program (CACFP) meal pattern requirements, which all licensed providers are required to follow. This training will also cover best practices for creating positive meal times and implementing family-style meal service.

Date & Time: Friday, March 10, 2017**Time:** 9:30 a.m. – 12 p.m.**Location:** OSSE, 810 First St. NE, Third Floor Grand Hall Side A**Register by Web:** bit.ly/2iQm8fc**Sponsor(s):** OSSE – Wellness and Nutrition**Audience:** All caregivers, teachers, assistant teachers and directors**Core Knowledge Area:** Health, Safety and Nutrition (CCDF Topic: Nutrition and physical activity)

Mar.

10

Child Abuse Prevention and Mandatory Reporter Training**Units/Clock Hours:**
3 Professional Learning Units

Description: Mandatory Reporter Training contains definitions, examples, and signs of child abuse and neglect, numerous resources and DC legal codes, helpful tips for mandatory reporters, and interactive learning checks to confirm you learned important concepts. After you complete this training, you should be able to understand your legal obligations as a mandatory reporter; define the types of child abuse and neglect; recognize signs of child abuse and neglect; identify groups of children who may be at a higher risk for abuse or neglect; and more.

Date: Friday, March 10, 2017**Time:** 1 – 4 p.m.**Location:** OSSE, 810 First St. NE, Third Floor Grand Hall Side A**Register by Web:** bit.ly/2jfQhtW**Sponsor(s):** CFSA and OSSE**Audience:** All teachers, assistant teachers, care givers, volunteers, substitutes, directors**Core Knowledge Area:** Health, Safety and Nutrition (CCDF Topic: Prevention of shaken baby syndrome and abusive head trauma)

Mar.

14

Community Emergency Response Team (CERT) Training**Units/Clock Hours:**
6 Professional Learning Units**Description:** This course teaches basic disaster response skills, fire safety, light search and rescue, CERT team organization, disaster psychology, terrorism awareness, and disaster medical operations.**Date:** Tuesday, March 14, 2017**Time:** 9 a.m. – 4 p.m.**Location:** OSSE, 810 First St. NE, Eighth Floor 806 A & B**Register by Web:** bit.ly/2joD1kj**Sponsor(s):** Serve DC and OSSE**Audience:** All caregivers, teachers, assistant teachers and directors**Core Knowledge Area:** Health, Safety and Nutrition (CCDF Topic: Emergency preparedness and response planning)

Mar.

15

Overview of Special Education**Units/Clock Hours:**
1.5 Professional Learning Units**Description:** This workshop covers the basics of special education, including special education laws, the process of eligibility and services delivery, and the rights of the parent or guardian.**Date:** Wednesday, March 15, 2017**Time:** 9 – 10:30 a.m.**Location:** OSSE, 810 First St. NE, Eighth Floor 806 A & B**Register by Web:** bit.ly/2jftvad**Organization:** Early Stages, DC Public Schools and OSSE**Audience:** Teachers, assistant teachers, administrators, program support**Core Knowledge Area:** Professionalism and Advocacy

Mar.

14

Food Allergy Prevention and Response**Units/Clock Hours:**
3 Professional Learning Units**Description:** This session will discuss the preparation and handling of food for children of all ages, including the consumption of formula, human milk, and solid foods. Participants will also learn how to recognize and respond to food allergies and how to create and follow individual care plans for children with food allergies.**Date:** Tuesday, March 14, 2017**Time:** 10 a.m. - 1 p.m.**Location:** OSSE, 810 First St. NE, Fifth Floor 5014**Register by Web:** bit.ly/2dl2bql**Sponsor(s):** Children's National Health System and OSSE**Audience:** All infant, toddler and preschool teachers, assistant teachers and directors**Core Knowledge Area:** Health, Safety and Nutrition (CCDF Topic: Prevention and response to food allergies)

Mar.

15

Food Allergy Prevention and Response in Early Care and Preschool Settings**Units/Clock Hours:**
2 Professional Learning Units**Description:** This training will explore the food allergy procedures that should be in place when caring for children in early care and preschool settings according to research-based, Department of Health, Centers for Disease Control and Prevention (CDC) guidelines, and the rights of children with food allergies.

After this training, participants should be able to define anaphylaxis, identify common food allergies and their signs and symptoms, outline treatment and management options, learn how to create and follow individual care plans for each child with a food allergy, create and implement a detailed treatment plan in the event of an allergic reaction, and apply and understand best practices for minimizing risks and exposure.

Date: Wednesday, March 15, 2017**Time:** 1 – 3 p.m.**Location:** OSSE, 810 First St. NE, Eighth Floor 806 A & B**Register by Web:** bit.ly/2joAUND**Sponsor(s):** OSSE Wellness and Nutrition**Audience:** All staff members involved in providing direct care to children (teachers, assistant teachers, care givers, volunteers, substitutes, directors, etc.)**Core Knowledge Area:** Health, Safety and Nutrition (CCDF Topic: Prevention and response to food allergies)

Mar.

15

Stewards of Children**Units/Clock Hours:**

2 Professional Learning Units

Description: Participants will leave with practical skills they can use daily, and knowledge of ways their organization can implement policies to proactively reduce the risk of child sexual abuse.

Date: Wednesday, March 15, 2017

Time: 3 – 5 p.m.

Location: 429 O St. NW, Washington, D.C., 20001

Register by Web: bit.ly/2iepjNA or

Email stewards@safeshores.org

Sponsor(s): Safe Shores – The DC Children’s Advocacy Center and OSSE

Audience: Teachers, administrators, program support

Core Knowledge Area: Health, Safety, and Nutrition (CCDF Topic: Prevention of shaken baby syndrome and abusive head trauma)

Mar.

16

Ready To Learn**Units/Clock Hours:**

1.5 Professional Learning Units

Description: Learn how to use educational television content to bolster literacy education in the classroom. This workshop will introduce participants to at least 6-12 new children’s books, and at the end of the workshop, participants get to choose a new children’s book to keep.

Date: Thursday, March 16, 2017

Time: 1 - 2:30 p.m.

Location: OSSE, 810 First St. NE, Eighth Floor 806 A & B

Register by Web: bit.ly/2i1oUBI

Sponsor(s): WETA and OSSE

Audience: Childcare providers, teachers, after school staff

Core Knowledge Area: Child Growth and Development

Mar.

16

Building a Solid Foundation: Social Emotional Development in Young Children**Units/Clock Hours:**

3 Professional Learning Units

Description: This course gleans content from the Center on the Social Emotional Foundations of Early Learning (CSEFEL) infant and toddler training modules. Participants will engage in hands-on activities, which illustrate the importance of positive social emotional climates for children from birth through age three.

Date: Thursday, March 16, 2017

Time: 10 a.m. – 1 p.m.

Location: OSSE, 810 First St. NE, Eighth Floor 806 A & B

Register by Web: bit.ly/2dNZzEb

Sponsor(s): OSSE

Audience: Infant, toddler and preschool teachers, administrators

Core Knowledge Area: Social-Emotional Development and Mental Health

Mar.

17

Building and Physical Premises Safety**Units/Clock Hours:**

3 Professional Learning Units

Description: This training will help organizations identify where they need to make changes and build capacity to ensure children are healthy and safe in their care while complying with health and safety regulations.

Date: Friday, March 17, 2017

Time: 9:30 a.m. - 12:30 p.m.

Location: United Planning Organization, 801 Rhode Island Ave. NE, Washington, DC 20001

Register by Web: bit.ly/2j3Eol6

Sponsor(s): United Planning Organization and OSSE

Audience: Directors, administrators, program support, teachers, assistant teachers

Core Knowledge Area: Health, Safety, and Nutrition (CCDF Topic: Building and physical premises safety)

Mar.

18

Administration of Medication**Units/Clock Hours:**

2 Professional Learning Units

Description: This training will introduce participants to basic medication administration guidelines, how to properly handle, administer and store medications and the proper documentation of medication. This session will review the most prevalent common childhood medications and identify adverse reactions to medications.

Date: Saturday, March 18, 2017

Time: 10 a.m. – 12 p.m.

Location: 209 Upshur St. NW, Washington, DC 20011

Register by Web: bit.ly/2iUCN3K

Sponsor(s): Kids Comprehensive Services (KCS) and OSSE

Audience: All infant, toddler and preschool teachers, assistant teachers and directors.

Core Knowledge Area: Health, Safety and Nutrition (CCDF Topic: Administration of Medication)

Mar.

20

Emergency Preparedness**Units/Clock Hours:**

2 Professional Learning Units

Description: Being prepared for emergencies can make a big difference as to whether or not the children in your care and the staff in your program remain safe. In this course, participants will learn about the necessary steps a program should take to ensure preparedness in the event of an emergency, as well as effective strategies to communicate the emergency plan to children, parents, and staff.

Date: Monday, March 20, 2017

Time: 9 – 11 a.m.

Location: OSSE, 810 First St. NE, Third Floor Grand Hall Side A

Register by Web: bit.ly/2dODxkC

Sponsor(s): DC Emergency Management Systems/ Children's National Health System/Health Resources and Services Administration (HRSA) and OSSE

Audience: All caregivers, teachers, assistant teachers and directors.

Core Knowledge Area: Health, Safety and Nutrition (CCDF Topic: Emergency preparedness and response planning)

Mar.

20

Precautions in Transporting Children**Units/Clock Hours:**

2 Professional Learning Units

Description: This course provides basic knowledge of transportation regulations, and includes a demonstration on how to properly conduct a vehicle passenger check, the use of child safety restraints required by District law, proper loading, unloading, and monitoring of children. Participants will learn where to find vehicular first aid supplies, and how to conduct emergency procedures and response in the event of accidents or breakdowns.

Date: Monday, March 20, 2017

Time: 10 a.m. – 12 p.m.

Location: OSSE, 810 First St. NE, Third Floor Grand Hall Side B

Register by Web: bit.ly/2i1BvV8

Sponsor(s): DC Department of Transportation

Audience: All infant, toddler and preschool teachers, assistant teachers and directors who provide transportation of any kind (before and after school, field trips, etc.)

Core Knowledge Area: Health, Safety, and Nutrition (CCDF Topic: Precautions in transporting children)

Mar.

21

How to Prevent and Control Infectious Diseases**Units/Clock Hours:**

3 Professional Learning Units

Description: This session will provide an overview on how to prevent and control infectious diseases, including information on immunizations and influenza.

Date: Tuesday, March 21, 2017

Time: 9 a.m. – 12 p.m.

Location: OSSE, 810 First St. NE, Eighth Floor 806 A & B

Register by Web: bit.ly/2ip9Qth

Sponsor(s): Children's National Health System and OSSE

Audience: All infant, toddler and preschool teachers, assistant teachers and directors

Core Knowledge Area: Health, Safety, and Nutrition (CCDF Topic: Prevention and control of infectious diseases)

Mar.

21

Children & Fire/Fire Extinguisher Training**Units/Clock Hours:** 2.5 Professional Learning Units

Description: Children & Fire: reviews the basic characteristics of children who show interest in fire and how to refer a child to the Juvenile Firesetters Program. Fire Extinguisher Training: identifies the parts and function of a fire extinguisher and allow hands-on training on the use of a fire extinguisher.

Date: Tuesday, March 21, 2017**Time:** 1 – 3:30 p.m.**Location:** 1100 4th St. SW, Suite E-700, Washington, DC 20024**Register by Web:** bit.ly/2iW7bKCor Email: aleazor.taylor@dc.gov**Sponsor(s):** DC Fire & Emergency Management Systems (DC FEMS) and OSSE**Audience:** Teachers, administrators, program support staff**Core Knowledge Area:** Health, Safety, and Nutrition

Mar.

24

Healthy Touch for Children and Youth**Units/Clock Hours:** 1 Professional Learning Unit

Description: This supplemental training builds upon content presented in the prerequisite Stewards of Children training. Participants will learn about safe and respectful interactions with children and how to differentiate normal and healthy touches from potentially unhealthy touch.

Date: Friday, March 24, 2017**Time:** 9:30 - 10:30 a.m.**Location:** 429 O. St. NW, Washington, D.C., 20001**Register by Web:** bit.ly/2ja43seor Email: stewards@safeshores.org

Participants must have completed Stewards of Children training to be eligible for this session.

Sponsor(s): Safe Shores – The DC Children’s Advocacy Center and OSSE**Audience:** Teachers, administrators, program support**Core Knowledge Area:** Health, Safety, and Nutrition

Mar.

23

Act Early: When Children Fall Behind in their Developmental Milestones**Units/Clock Hours:** 3 Professional Learning Units

Description: Acting early can greatly improve a child’s quality of life, prevent abuse, and improve early education outcomes. In this training, participants will learn about District programs, Strong Start, DC’s early intervention program, and Early Stages. Participants will also receive instruction on how to prevent and recognize signs and symptoms of shaken baby syndrome/abusive head trauma.

Date: Thursday, March 23, 2017**Time:** 1 – 4 p.m.**Location:** OSSE, 810 First St. NE, Eighth Floor 806 A & B**Register by Web:** bit.ly/2i3cq7s**Sponsor(s):** Early Stages and OSSE**Audience:** All teachers, assistant teachers, care givers, volunteers, substitutes, directors**Core Knowledge Area:** Child Growth & Development; Health, Safety & Nutrition (CCDF Topic: Prevention of shaken baby syndrome and abusive head trauma)

Mar.

27

Administration of Medication (AOM) Training**Units/Clock Hours:** 3 Professional Learning Units

Description: During this course, participants will discuss basic medication administration guidelines, how to properly handle and store medications, and proper documentation of the administration of medication.

Date: Monday, March 27, 2017**Time:** 9 a.m. – 12 p.m.**Location:** OSSE, 810 First St. NE, Eighth Floor 806 A & B**Register by Web:** bit.ly/2jfXp2R**Sponsor(s):** Children’s National Health System (CNHS) and OSSE**Audience:** All infant, toddler and preschool teachers, assistant teachers and directors**Core Knowledge Area:** Health, Safety and Nutrition (CCDF Topic: Administration of Medication)

Mar.

28

Infant Safe Sleep Practices**Units/Clock Hours:**

2 Professional Learning Units

Description: Participants in this course will identify behaviors that increase the risk of SIDS and sleep related infant deaths, learn ways to reduce the risk of SIDS in child care settings, and learn how to communicate with parents and other caregivers about safe sleep practices. This course reflects the American Academy of Pediatrics' revised recommendations for a safe sleep environment.

Date: Tuesday, March 28, 2017

Time: 10 a.m. – 12 p.m.

Location: 899 North Capitol St. NE, 3rd Floor

Register by Web: bit.ly/2iQcAdR

Sponsor(s): District Department of Health, Community Health Administration and OSSE

Audience: All teachers, assistant teachers, care givers, volunteers, substitutes, directors

Core Knowledge Area: Health, Safety and Nutrition (CCDF Topic: Sudden Infant Death Syndrome (SIDS) and use of safe sleep practices)



Online Training Options

The course offerings featured in this section are approved online training programs designed to meet the 11 CCDF Health and Safety Training requirements. Please note: Completion certificates are required and web-based courses may cost an additional fee.



On Demand Child Care Training

Featured module:

Health & Safety Basics: Requirements for Certification

Best practices and standards for health and safety are the foundation of quality child care. Meeting the basic health and safety needs of all children sets the stage for positive child outcomes. This health and safety orientation module provides an overview of the basic health and safety requirements and best practices in nine of the topic areas outlined in the Child Care and Development Block Grant (CCDBG) Reauthorization of 2015.



- Safe spaces
- Transportation safety
- Handling and storage of hazardous materials
- Emergency preparedness
- Prevention and control of infectious disease
- Food and allergic reactions and how to respond
- Administration of medication
- Shaken baby syndrome/abusive head trauma
- Safe sleep and SUIDS prevention

Eligible for CEUs
Accepted for CDA

Content for this On Demand professional development module is available at no cost. If a certificate of completion is needed or required, a \$15.00 fee is charged.

extension.psu.edu/youth/betterkidcare • 800-452-9108



Supported by funds from the Office of Child Development and Early Learning, jointly overseen by the Departments of Human Services and Education.

Penn State is an equal opportunity, affirmative action employer, and is committed to providing employment opportunities to all qualified applicants without regard to race, color, religion, age, sex, sexual orientation, gender identity, national origin, disability or protected veteran status.

Claudia C. Mincemoyer, Ph.D., Better Kid Care Program Director
2182 Sandy Drive – Suite 204 State College, PA 16803

This publication is available in alternative media on request.

© 2016 The Pennsylvania State University

AD_HealthSafetyBasics_DC

Need to meet the **NEW CCDF Training Requirements?**

You can do this online through Quorum!

Quorum is a unique online professional development program for early education professionals. Quorum annual memberships include UNLIMITED online training for staff and providers.



New Child Care Development Fund (CCDF) regulations* require providers and teachers to complete training in these **11 topic areas:**

Quorum Courses

01. Prevention and control of infectious diseases	Cut the Cooties: Communicable Disease Prevention
02. SIDS and use of safe sleep practices	Safe Sleep & Sweet Dreams for Infants
03. Administration of medication	Cut the Cooties: Communicable Disease Prevention
04. Prevention/response to food allergies 05. Nutrition and physical activity	From Food to Physical Activity
06. Prevention of shaken baby syndrome and abusive head trauma	Understanding Child Abuse & Prevention
07. Building and physical premises safety 08. Emergency preparedness and response planning 09. Storage of hazardous materials and biocontaminants	Keeping Your Child Care Environment Safe & Secure
10. Precautions in transporting children	Traveling with Precious Cargo/Transportation Training for GA
11. First-aid and CPR	Safe Spaces & Places to Grow & Learn

*Section 658E(c)(2)(I)(i), (c)(2)(G) and (c)(2)(I)(i)(i)

What are the benefits of Quorum?



Saves Money

Annual memberships are \$120 per child care provider. Group memberships are available starting at \$50 per staff member per year.



Convenient

Courses are available 24/7, any time, any place. Over 80 hours of training available!



Training Credit

Certificates are awarded upon completion of each course, and a final CCDF certificate will be awarded upon completion of all of the courses above.



High Quality

Course material is high quality, engaging, interactive, relevant, and fun!

For more information and to join Quorum, visit www.kaplanco.com/elearning or call 404-591-2545 for a free webinar!

Available only from:



Early Educator Central:

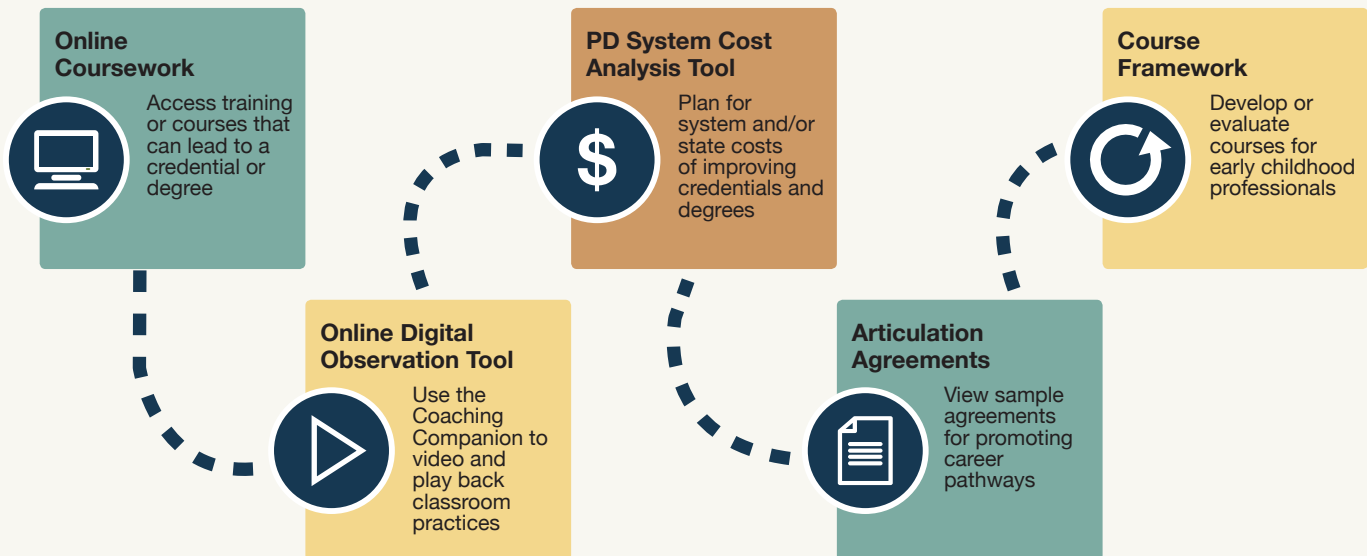
Pathways to Credentials and Degrees for Infant-Toddler Educators

No matter what your infant-toddler career pathway is, you'll find resources—organized by role—to help you build your competency and your impact. On track for a Child Development Associate (CDA) Credential™ for yourself? Looking to strengthen your skills as an administrator, coach, trainer, or consultant? Designing credit or non-credit coursework? Early Educator Central features essential tools for leaders, including a Professional Development (PD) System Cost Analysis Tool and model articulation agreements for use in higher education. Early Educator Central can help!

We have resources to help:



Our resources include:



Start Exploring Now!
Visit <https://earlyeducatorcentral.acf.hhs.gov>





Child and Family Services Agency

Online Mandated Reporter Training

ENGLISH/SPANISH

We all want every child in our city to grow up in safe and healthy families, yet the tragic fact is that thousands of our young people fall victim to abuse and neglect each year.

You can help. Your work gives you regular access to many children and youth, and an opportunity to play a critical role in protecting them. Mandated reporters are professionals obligated by law to report known or suspected incidents of child abuse and neglect. As a mandated reporter, you are part of the citywide safety net that provides life-saving interventions for vulnerable children and youth in our community.

This website provides the information you need to recognize the signs of abuse and neglect, and how to make a report. Thank you for taking time to work through this important training and for your invaluable partnership in looking out for the District's children and youth.

<https://dc.mandatedreporter.org/pages/Welcome.action>



MULTIHAZARD PLANNING FOR CHILDCARE

This online course, developed and provided by FEMA, covers the steps to help childcare providers prepare for incidents to ensure the safety of the children at their site. Childcare providers must have plans and procedures to keep children safe from everyday hazards and to respond and recover when an emergency happens.

The goal of this course is to provide childcare providers, of all sizes and with responsibility for children of all ages, with the knowledge and tools to analyze the hazards and threats at the site, to develop a plan to address these hazards and threats, and to implement processes to update and practice the emergency plan.

The topics addressed in this course include:

- Knowing your hazards.
- Developing a plan.
- Testing and updating your plan

This course culminates in a two-hour training certificate.

Register here: <http://1.usa.gov/1B9oKeJ>



FEMA



**Every day you see them reach milestones.
There are free resources to help you spot a few more.**

You spend your day working with, playing with, and watching children, and you are already familiar with many milestones — such as pointing at objects, smiling, and playing with others — that mark a child's development. All children are unique, but sooner or later, you will see a child who is not developing as they should. Free information on developmental milestones from 2 months to five years is available for child care providers and preschool teachers.

**For FREE materials, visit www.cdc.gov/ActEarly
or call 1-800-CDC-INFO.**



Learn the Signs. Act Early.



PRO SOLUTIONS

TRAINING

Has a business **solution** that's right for you!

ProSolutions Training is more than just **training!** Offering technology applications for state programs designed to meet **professional development** needs and to achieve professional excellence. ProSolutions Training is committed to ensuring that the youngest children have **brighter futures!**

COURSE DEVELOPMENT

- Convert existing classroom training to online modules or develop new courses
- Create interactive elements: quizzes, tests, example scenarios, videos
- Translate online modules into Spanish
- Develop, record and host custom webinars
- Create your own course and certification packages

END-USER EXPERIENCE

- Individual student transcripts, certificates and IACET-approved CEUs for successful course completion
- System-generated transcripts and certifications are available 24/7
- No need to hire additional IT staff - we provide telephone, email and online technical assistance

FEDERAL AND STATE REQUIREMENTS

- Collect and report data for regulatory and accrediting agencies
- Offer coursework required in the federal CCDBG requirements

CUSTOMIZED COURSE DELIVERY

- A web access portal branded with your logo and colors
- Host and manage online courses – yours or ours
- Standard and custom reporting on participants, registration, progress, testing, and outcomes

CALL OR EMAIL US TODAY To Discuss
THE PERFECT SOLUTION For Your Business!

E-COMMERCE TRACKING AND REPORTING HOSTING BLOGS
SKILL-BASED VIDEOGRAPHY CERTIFICATION
COURSE DEVELOPMENT INTERACTIVE TRANSCRIPTS

Powerful Training  Dedicated Educators  Brighter Futures for Children

Learn more about ProSolutions Training and what we have to offer. You'll see the difference.

800.939.9694 or visit prosolutionstraining.com



As a IACET Authorized Provider, ProSolutions Training offers CEUs for its programs that qualify under the ANSI/IACET Standard at no additional cost.

ON-LINE TRAININGS

MULTIPLE OFFERINGS

Units/Clock Hours: Various

Core Knowledge Area: Various

Alignment: DC Common Core Early Learning Standards

Description: ChildCare Education Institute (CCEI) specializes in providing online training and certificates, child care registry development, and administrative solutions for the early care and education industry. As a leading distance training provider in child care, CCEI offers professionals 100+ online child care training courses in English and Spanish to meet licensing, recognition program, and Head Start requirements.

Time: Open Enrollment/ Self-paced

Register by Web: cceionline.com

Cost: varies

Sponsor(s): Child Care Education Institute

Audience: Teachers, administrators, before/after care, out-of-school time

MULTIPLE OFFERINGS

Units/Clock Hours: Various

Core Knowledge Area: Various

Alignment: DC Common Core Early Learning Standards

Description: Early Care Institute specializes in providing online training and certificates, child care registry development, and administrative solutions for the early care and education industry. As a leading distance training provider in child care, Early Care Institute offers courses to meet licensing, recognition program, and Head Start requirements.

Time: Open Enrollment/ Self-paced

Register by Web: earlycareinstitute.com

Cost: varies

Sponsor(s): Childcare Management Solutions

Audience: Teachers, administrators, before/after care, out-of-school time

DC MANDATED REPORTER TRAINING

Units/Clock Hours: 2 Professional Learning Units

Core Knowledge Area: Professionalism and Advocacy

Alignment: Licensing

Description: This engaging training contains definitions, examples, and signs of child abuse and neglect, numerous links to resources and DC legal codes, helpful tips for mandated reporters, and interactive learning checks to confirm you learned Important concepts.

Date: Online Virtual Training

Time: Open Enrollment/ Self-paced

Register by Web: dc.mandatedreporter.org/pages/Welcome.action

Cost: FREE

Sponsor(s): Child and Family Services Administration

Audience: Teachers, administrators, before/after care, out-of-school time

MULTIPLE OFFERINGS

Units/Clock Hours: Various

Core Knowledge Area: Various

Alignment: DC Common Core Early Learning Standards

Description: CYPHERWORX specializes in all online courses that are self-paced and interactive. Incorporating games and rich visuals so that our Out-of-School Time learners retain the information long after they have completed the course. Each of our courses comes with a Resource PDF that contains 3 download Learning Tasks Checklist, Course Information and Materials, and an Activity PDF. The full catalog includes hundreds of courses relevant to school-age childcare including a 36 course series with in-depth curriculum content, interactivity, and certificates.

Time: Open Enrollment/ Self-paced

Register by Web: ostpd.com

Cost: varies

Sponsor(s): CYPHERWORX

Audience: Out-of school time

WANT TO LEARN MORE?

Additional Professional Development Resources

Advocates for Justice: aje-dc.org

American Academy of Pediatrics (SIDS): wyostars.com/pdfs/aap_sids.pdf

Center for Disease Control and Prevention: cdc.gov

Council for Professional Recognition: cdacouncil.org/

Council for Exceptional Children: cec.sped.org/

DC Early Intervention: osse.dc.gov/service/strong-start-dc-early-intervention-program-dc-eip

Early Childhood Investigations Webinars: earlychildhoodwebinars.com

Early Childhood Training and Technical Assistance System: childcareta.acf.hhs.gov/ccdf-reauthorization

Early Educator Central: earlyeducatorcentral.acf.hhs.gov

Early Stages: earlystagesdc.org

Georgetown University Center for Continuing and Professional Education/Early Intervention: scs.georgetown.edu/programs_nc/CE0110/early-intervention?dID=5

Head Start Information Services: eclkc.ohs.acf.hhs.gov/hslc

Learn DC: learndc.org

National Association for the Education of Young Children: naeyc.org/

National Black Child Development Institute: nbcidi.org/

Save the Children: savethechildren.org

Sesame Street: sesamestreet.org/freeonlinecourse

Shaken Baby Syndrome: 3seconds.org/

Small Business Association (SBA): sba.gov/tools/sba-learning-center/search/training

US Consumer Product Safety Commission: cpsc.gov

Zero To Three: zerotothree.org/

Training Listed beyond this point are provided for a fee by OSSE Certified Trainers

“A-Go! A-May!”: Use African Songs, Dance and Drumming to Teach Early Childhood Literacy, Math and Physical Development (PART 1)

Units/Clock Hours: 2.5 Professional Learning Units

Description: In this interactive session, early childhood educators will explore ways to use movement, music and rhythm to teach crucial pre-reading and early math skills, as well as essential social-emotional abilities. Participants will use their newly acquired knowledge to create activities based on multi-cultural books they can immediately implement in their classrooms. Participants will receive lunch, a book, a CD, and handouts with lyrics and activities. Come prepared to sing, dance and have fun!

Cost: \$10 (please bring cash or a check made out to Inner City-Inner Child)

Date: Wednesday, Jan. 11, 2017

Time: 12 - 2:30 p.m.

Location: Matthews Memorial Baptist Church, 2616 Martin Luther King Jr Ave. SE, Washington, DC 20020, Ground Floor – Lecture Hall

Register by Web: www.innercity-innerchild.org/naptime-u-registration

Sponsor(s): Inner City - Inner Child

Audience: All infant, toddler and preschool teachers, assistant teachers and directors

Core Knowledge Area: Curriculum; Diversity; Health, Safety & Nutrition (CCDF Topic: Nutrition and physical health)

“A-Go! A-May!”: Use African Songs, Dance and Drumming to Teach Early Childhood Literacy, Math and Physical Development (PART 2)

Units/Clock Hours: 2.5 Professional Learning Units

Description: In this interactive session, early childhood educators will explore ways to use movement, music and rhythm to teach crucial pre-reading and early math skills as well as essential social-emotional abilities. Participants will use their newly acquired knowledge to create activities based on multi-cultural books they can immediately implement in their classrooms. Participants will receive lunch, a book, a CD, and handouts with lyrics and activities. Come prepared to sing, dance and have fun!

Cost: \$10 (please bring cash or a check made out to Inner City-Inner Child)

Date: Wednesday, Jan. 18, 2017

Time: 12 - 2:30 p.m.

Location: Matthews Memorial Baptist Church, 2616 Martin Luther King Jr Ave. SE, Washington, DC 20020, Ground Floor – Lecture Hall

Register by Web: www.innercity-innerchild.org/naptime-u-registration

Sponsor(s): Inner City - Inner Child

Audience: All infant, toddler and preschool teachers, assistant teachers and directors

Core Knowledge Area: Curriculum; Diversity; Health, Safety & Nutrition (CCDF Topic: Nutrition and physical health)

Food Handler’s Certification

Units/Clock Hours: 5 Professional Learning Units

Description: The goal of this certified professional food manager course is to provide the participant with a basic understanding of food safety and ensure that the participant learns to prepare and serve food safely. A food handler card confirms that the participant has demonstrated competence in knowing safe temperatures for cooking and holding food; the importance of personal hygiene; how to identify cross-contamination and what is the cause; and how to prevent contamination from equipment, tools, and utensils and more!

Cost: \$85

Date: (Saturdays) February 4 & March 18

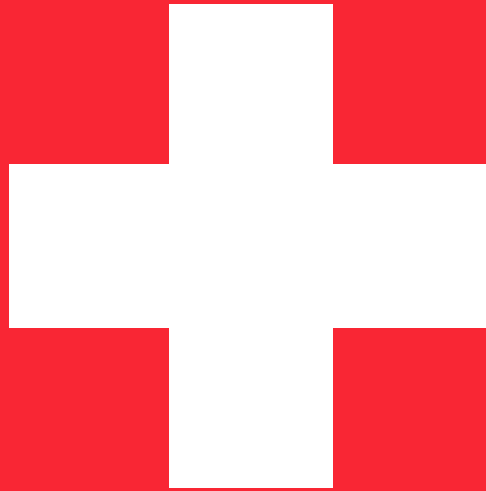
Time: 9:30 – 3:30 p.m.

Location: Central Union Mission, 65 Massachusetts Ave. NW, Washington, DC 20001

Register by E-mail/Phone: openheart11@verizon.net (301) 297-9288 or (240) 832-2683

Sponsor(s): City Wide Community Training Institute

Audience: Infant-toddler teachers, administrators, program support



CPR RESOURCES

Organization	Registration	Location	Cost
OSSE The Coles Group, LLC Marvin Coles (202) 486-6019 marvin@thecolesgroupdc.com	Listed in OSSE catalog and must register through Eventbrite	Will Vary	FREE Limited Space
Loving Your Heart, LLC Joan Irabor	(202) 340-0980 Joan20131@gmail.com	5212 Drake Place SE Washington, DC 20019	Call for Pricing
Javonne Haynes	(202) 256-9214 Javonne332000@yahoo.com	Will Vary	Call for Pricing
Patricia Burton- McFadden	(240) 714-0014 (202) 604-6508 divaenterprise@gmail.com	Will Vary	Call for Pricing
Marcus Pratt	(202) 701-5705 Mp.cpr1st.aed@gmail.com	Mobile Service	Call for Pricing
Donna Thomas Walter Royster	(202) 689-0429 or 0443 pulseone@yahoo.com	Will vary	Call for Pricing
Bernida Thompson	(202) 882-8073 (202) 270-3266 bthompson@rootspcs.org	Will Vary	Call for Pricing
Know CPR Don Sussman	(703) 528-7045 info@knowcpr.com	Will Vary	Call for Pricing
Turning Corners, LLC Khadijah Alima Long	(240) 615-0407 turningcornersllc@yahoo.com	Will Vary	Call for Pricing

OSSE-Certified Trainer Resource Guide

**The trainers listed beyond this point are
Fee-for-service professional development providers.**

FREQUENTLY ASKED QUESTIONS:

1. Why are Approved Trainers Important?

Research shows that early childhood professionals with specialized training AND higher education/professional credentials are more likely to create quality experiences for young children and their families. All staff in early childhood programs must provide evidence that they are receiving specialized training via continuing education and professional development activities. Continuing education requirements may vary depending on the type of program (subsidized child care, Head Start, publicly funded pre-K, etc).

The Office of the State Superintendent of Education (OSSE) approves competent individuals and organizations to train early childhood professionals. Trainers are selected based on their education and experience in the field. Only trainings delivered by OSSE approved trainers, accredited colleges/universities or other OSSE approved sources are acceptable.

2. What Counts as Continuing Education?

Professional Development Training/Clock Hours: At minimum, training participants should receive Professional Development Training Hours for the total length of the training. This is commonly referred to as “clock hours.”

Continuing Education Units (CEUs): A CEU is participation in a recognized continuing education program. Some colleges, universities, and OSSE certified training organizations can award CEUs.

1 CEU = 10 Professional Development Training/Clock Hours.
See question 3 for additional guidelines.

Academic Credit Hours: Colleges and universities award academic credit hours after a course of studies has been successfully completed. 1 academic credit = 15 Professional Development Training/Clock Hours. Most college courses are 3 academic credit hours. See question 3 for additional guidelines.

3. Are there additional guidelines or recommendations?

If seeking CEUs, OSSE certified training organizations authorized by the [International Association for Continuing Education & Training](#) (IACET) or colleges/universities accredited by regional accrediting bodies, National Association for the Education of Young Children (NAEYC) or National Council for Accreditation of Teacher Education (NCATE) are highly recommended.

If seeking Academic Credit Hours, colleges/universities accredited by regional accrediting bodies, National Association for the Education of Young Children (NAEYC) or National Council for Accreditation of Teacher Education (NCATE) is highly recommended.

4. How do I Select an Approved Trainer?

- a) Determine Your Training Needs - Core Knowledge Areas and Content Level

Core knowledge Area:

The Core Knowledge Areas detail the specific knowledge and skills needed by early childhood professionals to work effectively with all young children and families. Use classroom assessments, staff evaluations, and other data about your program to determine the core knowledge area that you or your staff needs more support with.

Training Content Level:

What level of training are you seeking?

- Basic Content Level: The audience is somewhat new to the concept and needs to learn or relearn the basics.
- Intermediate Content Level: The audience understands the basics, but needs to apply what is learned.
- Advanced Content Level: The audience understands the basics, has already applied the concepts, but needs to understand how to evaluate and synthesize the effectiveness of implementation.

- b) Identify and Contact the Trainer(s)

Make sure that the trainer you selected is certified to train in the core knowledge area and at the level you are seeking. The trainer must have a current (not expired) certification. This list will be revised periodically. Please contact us to confirm that you have the most recent listing. The trainer's name and certification number must be listed on the training certificate. **OSSE is not responsible for arrangements made with outside trainers and cannot guarantee the quality of services provided by these trainers. **

- c) Apply Concepts Learned

Continuing education is more than “getting clock hours.” The topics and content level should be intentionally selected. The concepts learned should be used to provide quality experiences for young children and their families.

- d) Reflect on & Evaluate the Impact

Did the training have an impact? What were the challenges of implementation? Identify the next steps. Quality is a continuous improvement and reflection process.

5. What is the Function of the Office of the State Superintendent of Education?

The Office of the State Superintendent of Education (OSSE) provides leadership and coordination to ensure all District of Columbia children from birth to kindergarten entrance have access to high-quality early childhood development programs.

OSSE works to develop an effective early childhood education system by:

- implementing high standards for programs and professionals
- creating supports to meet standards
- adhering to rigorous accountability measures
- engaging community stakeholders
- securing strong financial supports

UNDERSTANDING CORE KNOWLEDGE AREAS:

CURRENT LANGUAGE	PREVIOUS LANGUAGE
<p>1. Child Growth and Development</p> <ul style="list-style-type: none"> - Principles of child growth and development - Domains and stages of development (motor, language, cognitive, social-emotional) - Links between various aspects of development and learning 	1. Human Development
<p>2. Observing, Documenting and Assessing to Support Young Children and Families</p> <ul style="list-style-type: none"> - Observation and assessment of children's behavior - Screening instruments for all domains (motor, language, cognitive, social-emotional) - Using observations and assessments in a effective way to support children and families - Recognize the types and signs of child mental health issues 	2. Observing, Recording and Assessing Children's Behavior
<p>3. Health, Safety, and Nutrition</p> <ul style="list-style-type: none"> - Physical Development, Health and Safety - Nutrition - Types and signs of abuse, neglect, and violence; responsibilities and procedures for reporting abuse and neglect - Developmental consequences of abuse, neglect, stress and trauma 	3. Health, Safety and Nutrition
<p>4. Curriculum</p> <ul style="list-style-type: none"> - Planning and implementing a developmentally appropriate curriculum that advances all areas of children's learning and development - Approaches to Learning, Language and Literacy, Mathematical Thinking, Scientific Inquiry, Creative Arts - Considering culturally-valued content and home experiences - Strategies that offer choices and foster curiosity, problem solving and decision-making - Planning and implementing a curriculum that is aligned with DC's Early Learning Standards 	4. Developmentally Appropriate Curriculum
<p>5. Inclusive Practices</p> <ul style="list-style-type: none"> - Characteristics of children with varied disabilities - Adaptations of curricula to include children with disabilities in all classroom activities - Interventions to enhance the growth and development of children with disabilities and development of Individualized Family Service Plan (IFSP) or Individualized Education Plan (IEP) 	5. Inclusive Practices for Children with Disabilities
--note: Guidance and Management now merged with 11--	6. Guidance and Management
<p>6. Learning Environments</p> <ul style="list-style-type: none"> - Creates learning environments that are responsive to the diverse needs of the abilities and interests of young children - Strategies to implement learning environments that support developmentally appropriate practices (infants, preschoolers, school age) - Adaptations to fully include children with special needs 	7. Learning Environments
<p>7. Building Family and Community Relationship</p> <ul style="list-style-type: none"> - Principles and strategies that view families as functional and resilient with diverse values, cultures, unique temperaments and learning styles - Establishing relationships and communication with families and other community systems that are productive, supportive and pro-active - Issues, challenges, and services regarding mental health 	8. Supportive Relationships with Children Families and other Community Systems

CURRENT LANGUAGE	PREVIOUS LANGUAGE
<p>8. Diversity: Family, Language, Culture, and Society</p> <ul style="list-style-type: none"> - Culture, language and ethnicity as a positive influence on a child’s development - Helping young children understand and appreciate different cultural traditions 	<p>9. Diversity, Family, Language, Culture, Society</p>
<p>9. Program Management: Operation and Evaluation</p> <ul style="list-style-type: none"> - Approaches and techniques to plan, organize, and use available resources - Effective strategies for working productively with staff and community resource individuals and agencies - Techniques to conduct program evaluation and to implement program improvements - Interpersonal development and communication including team building, collaboration, and conflict management principles and skills. - Fiscal planning and management 	<p>10. Program Operation and Evaluation</p>
<p>10. Professionalism and Advocacy</p> <ul style="list-style-type: none"> - Scope of the early childhood profession - Impact of federal, state, and local standards, policies, regulations, and laws which govern and impact on children, programs and early childhood professionals - Approaches to evaluate one’s professional skills and need for professional development - Responsibility to work with other early care and education professionals, parents and the community to discuss and improve policies, laws, standards, practices that impact children, programs and the profession 	<p>11. Professionalism and Advocacy</p>
<p>11. Social-Emotional Development and Mental Health</p> <ul style="list-style-type: none"> - Social and emotional development - Communication techniques for guiding young children toward self- direction and confidence - Guidance and management strategies that support developmentally appropriate practices - Approaches to provide supportive relationships with children and to foster positive peer-to-peer interactions - Approaches to meet the mental health needs of all children 	<p>12. Social/Emotional Development and Mental Health</p>

UNDERSTANDING THE TRAINING CONTENT LEVELS:

Content Level	What Audience is this Level of Training for?	Alignment with Bloom's Taxonomy
Basic	The audience is somewhat new to the concept and needs to learn or relearn the basics.	Knowledge Comprehension
Intermediate	The audience understands the basics but need to apply what is learned.	Application Analysis
Advanced	The audience understands the basics, has already applied the concepts, and need to understand how to evaluate and synthesize the effectiveness of implementation.	Synthesis Evaluation

• Identify and Contact the Trainer

Make sure that the trainer you selected is certified to train in the core knowledge area and at the level you are seeking. The trainer must have a current (not expired) certification. This list will be revised periodically. Please contact us to confirm that you have the most recent listing. The trainer's name and certification number must be listed on the training certificate. ** OSSE is not responsible for arrangements made with outside trainers and cannot guarantee the quality of services provided by these trainers**

• Apply Concepts Learned

Continuing education is more than 'getting clock hours.' The topics and content level should be intentionally selected. The concepts learned should be used to provide quality experiences for young children and their families.

• Reflect on & Evaluate the Impact

Did the training have an impact? What were the challenges of implementation? Identify the next steps. Quality is a continuous improvement and reflection process.

CERTIFIED TRAINING- ORGANIZATIONS:

Organization, Primary Contact and Contact Information	Training Content Level	Core Knowledge Area	Trainings Offered in Other Language
Action for Healthy Kids Kristina Shelton (303) 883-2482 (410) 707-9038 kshelton@actionforhealthykids.org	Basic	3	No
Advocates for Justice and Education, Inc. Jazmone Taylor jazemone.taylor@aje-dc.org (202) 678-8060	Basic	1,2,3,5,10,11	Yes Spanish & Amharic
Apple Tree Institute for Education Innovation Kelly Trygstad (202) 488-3990 ktrystad@appletreeinstitute.org	Advanced	ALL	Yes Spanish, German, Farsi, Pashto, Portuguese, French & Tagalog
Bright Horizons Children's Centers, LLC Deborah Koshansky (857) 334-1037 deborah.koshansky@brighthorizons.com	Basic	1,4,6,7,8,9,10,11	No
Bright Beginnings, Inc. Yasmin Shaffi (202) 842-9090 yshaffi@brightbeginningsinc.org	Basic	4	No
Bureau of Nutrition & Physical Fitness, DC DOH Michele Tingling-Clemmons (202) 442-9140 Michele.Tingling-Clemmons@dc.gov	Basic	3	Yes Spanish
Center for Child Protection and Family Support Joyce Thomas (202) 544-3144 ext. 11 joyce@centerchildprotection.org	Advanced	1,3,4	No
CentroNia Esteban Morales (202) 332-4200 emorales@centronia.org	Advanced	ALL	Yes Spanish
ChildCare Education Institute Kimberle Collins (1-800) 499-9907 ext.533 kcollins@cceionline.edu	Intermediate	ALL	Yes Spanish
Child Care Management Solutions Amina Jones Law (301) 203-7648 cms4women@aol.com cms4women@yahoo.com	Advanced	ALL	No

Organization, Primary Contact and Contact Information	Training Content Level	Core Knowledge Area	Trainings Offered in Other Language
Child Development Consultants, LLC Judith Greenberg (301) 442-3857 jgreenberg@childdc.com	Intermediate	1,5,6,11	Yes Spanish & French
Children's National Medical Center Molly Savitz and Candice Pantor (202) 476-2239 MSavitz@childrensnational.org	Advanced	2,3,5,7	No
City Wide Community Child Development Center Shirley Johnson (301) 580-1072 (240) 832-2682 openheart11@verizon.net	Intermediate	1,3,4,5,6,7,8,11	No
Consortium for Child Welfare Anniglo Boone (202) 547-1589 aboone@consortiumforchildwelfare.org	Advanced	3 Specialized Area Social Work	Yes Spanish
CYPHERWORX Catherine Anderson (585) 626-8685 canderson@cypherworx.com	Basic	ALL	No
Departmental of Behavioral Health vs. Mental Health Barbara Parks Note: Not open to public (202) 698-1871 Barbara.Parks@dc.gov	Intermediate	1,2,3,4,7,8,11	No
Department of Health Sharon Brandon (202) 442-5925 Sharon.Brandon@dc.gov	Advanced	ALL	Spanish
DC Fire & EMS Department Aleazor Taylor (202) 727-2215 Aleazor.Taylor@dc.gov	Intermediate	2,3,11	No
DC Public Library Patty Reeber (202) 727-2313 Patty.Reeber@dc.gov	Basic	4	No
Debra L. Byrd & Associates Debra Byrd (703) 965-7637 VAbyrds@aol.com	Intermediate	1,2,3,9,11	No

Organization, Primary Contact and Contact Information	Training Content Level	Core Knowledge Area	Trainings Offered in Other Language
Early Learning Strategies and Solutions (ELSS) LLC Joi Woods 240-270-2199 workshops@elssconsulting.com	Intermediate	3,9,10	No
Early Stages Jeanie Chang (202) 698-8037 Jeanie.chang@dc.gov	Intermediate	1,2,3,4,5,6,7,8,10,11	Yes Spanish & Amharic
Education Matters, LLC Toni Brown (301) 613-3985 tbrown@educationmattersllc.com	Intermediate	4	No
Eisenhart & Associates, Educational Consulting Corrine Eisenhart (717) 249-7733 (717) 991-9201 EisenhartConsulting@gmail.com	Advanced	1,2,4,5,6,7,10	No
FAA/DOT Child Development Center Sharleen Smith (202) 267-7672 Sharleen.E-CTR.Smith@faa.gov	Intermediate	ALL	No
ICF Early Education Institute Barbara McCreedy (703) 225-2181 barbara.mccreedy@icfi.com	Advanced	ALL	Yes Spanish
Imagination Stage Joanne Seelig (301) 280-1646 jseelig@imaginationstage.org	Intermediate	1,4,5,11	No
Inner City-Inner Child Ingrid Zimmer (202) 965-2000 ext. 104 Ingrid@innercity-innerchild.org	Intermediate	4,7,10,11	American Sign Language
Innis Enterprise, Inc. Michelle Marbury (301) 933-0779 (240) 882-5550 m.innis@verizon.net	Advanced	ALL	Yes Spanish
Instituto de Educac'ion Infantil, Inc. Miriam Baldwin (301) 982-1596 mbaldwin20@hotmail.com	Intermediate	1,3,4,6,7,8,9,10,11	Yes Spanish

Organization, Primary Contact and Contact Information	Training Content Level	Core Knowledge Area	Trainings Offered in Other Language
Jewish Social Service Agency Orly Zimmerman-Leizerov (301) 610-8339 oleizerov@jssa.org	Intermediate	7,11	Yes Spanish, Chinese, Hebrew & French
Kaplan Early Learning Company Julie Dobies (410) 303-8802 jdobies@kaplanco.com	Intermediate	ALL	No
Kids Are Us Learning Centers, Inc Lynita Law-Reid (202) 561-0290 lynitakaulc@aol.com	Intermediate	1	No
Kids Comprehensive Services, LLC Brenda Harris (202) 678-0027 brendaharrisw@aol.com	Advanced	1,2,3,4,5,7,8,11	Yes Spanish
KJ Consulting Group Kamila Johnson (240) 595-2790 kamila@kj-consulting.org	Basic	1,2,4,5,6,7,8,9,10,11	Yes Spanish
Know CPR Don Sussman (703) 528-7045 info@knowcpr.com	Advanced	3 Specialized Field CPR and 1st AID	No
Kuumba Learning Center, Inc. Maja Rasheed (202) 563-5971 kuumbateachers@gmail.com	Intermediate	2	No
Loving Your Heart, LLC Joan Irabor (202) 340-0980 joan20131@gmail.com	Intermediate	3 Specialized Area CPR & 1 st AID	No
Mary's Center for Maternal and Child Health Yael Kiken (202) 420-7143 YKiKen@maryscenter.org	Advanced	ALL	Yes Spanish
McFarren Aviles and Associates Jill McFarren Aviles 703-505-0127 jill@mcfarrenaviles.com	Advanced	2,4,6	Yes Spanish

Organization, Primary Contact and Contact Information	Training Content Level	Core Knowledge Area	Trainings Offered in Other Language
MD Homeschool Solutions, Limited Aretha Williams (301) 646-7342 wwaretha@msn.org	Advanced	2,3,4,5,6,7,8,9,10,11	No
National Association for the Education of Young Children (NAEYC) (1-800) 424-2460 www.naeyc.org	Advanced	ALL	No
National Black Child Development Institute Dana Caffee-Glenn (202) 552-6090 dcaffee-glenn@nbcidi.org (202) 833-2220 www.nbcidi.org	Advanced	ALL	No
National Child Research Center Mary C. Farmer (202) 363-8777 ext. 235 mfarmer@ncrcpreschool.org	Intermediate	1,4,5,7,9	Yes Spanish
National Educational Consulting Services Lora Fader Dunne (301) 564-6650 necstrainings@yahoo.com	Advanced	1,2,4,5,6,7,11	Yes Spanish
Office of the State Superintendent of Education (OSSE) Professional Development Unit Nigel Henley (202) 727-8119 Nigel.Henley@dc.gov	Advanced	ALL	Yes Spanish & Amharic
Office of the State Superintendent of Education (OSSE) Nutrition Katrina Florek (202) 442-4011	Advanced	3	No
Over Achieve Consulting Heidi P. O’Gilvie (202) 409-6601 hogilvie@overachieveconsulting.com	Basic	4	Yes Spanish
Roots Activity Learning Center, Inc. Bernida Thompson (202) 270-3266 (202) 882-8073 bthompson@rootspcs.org iflemming@rootsactivity.org	Advanced	3 Specialized Area CPR & 1st Aid 4	No

Organization, Primary Contact and Contact Information	Training Content Level	Core Knowledge Area	Trainings Offered in Other Language
Safe Shores-DC Children's Advocacy Erin McGuinness (202) 645-3522 emcguinness@safeshores.org www.safeshores.org	Basic	3	Yes Spanish
School Readiness Consulting Lindsey T. Allard Agnamba (877) 447-0327 allard@schoolreadinessconsulting.com www.schoolreadinessconsulting.com	Advanced	ALL	Yes Spanish
Smithsonian Early Enrichment Center Betsy Bowers (202) 633-9587 bowersb@si.edu	Intermediate	6	No
Smithsonian National Air and Space Museum Ann Caspari (202) 633-2557 caspariak@si.edu	Intermediate	4,6	No
Southeast Children's Fund –Professional Development Institute Frances J. Rollins (202) 561-5736 sechild@verizon.net rollins.frances@gmail.com	Advanced	ALL	Yes Spanish & Tagalog
St. Columba's Nursery School Julia H. Berry (202) 742-1980 jberry@columba.org school@columba.org	Advanced	1,2,4,5,6,7,9,11	No
Support By Design Badiyah Mushirah-Sharif (571) 480-9967 support-by-design2013@outlook.com	Advanced	ALL	No
Teaching Strategies teachingstrategies.com	Advanced	4	Yes Spanish
The Coles Group, LLC Marvin Coles (202) 486-6019 marvin@thecolesgroupdc.com	Advanced	3 Specialized Area CPR & 1 st AID	Yes Urdu, Spanish, Punjabi, Hindi, Vietnamese, Korean, Chinese & Amharic
The Ounce of Prevention Fund Renee Welch (312) 922-3863 (708) 805-0195 rwelch@ounceofprevention.org	Intermediate	2,9,10	No

Organization, Primary Contact and Contact Information	Training Content Level	Core Knowledge Area	Trainings Offered in Other Language
Turning Corners LLC Khadijah Alima Long (240) 615-0407 turningcornersllc@yahoo.com	Advanced	3 Specialized Area CPR and 1st AID	No
United Planning Organization (UPO) Syrta L. Robinson (202) 238 4636 (240) 304 6227 srobinson@upo.org	Advanced	ALL	Yes Spanish
United States General Services Administration Sandy Axelrod (202) 205-7406 sandra.axelrod@gsa.gov	Advanced	ALL	No
United States Botanic Garden Lee Coykendall (202)226-1117 (202) 578 8119 Lcoykend@aoc.gov	Advanced	3,4,6,7,8	No
WETA Susan Schatten (703) 998-2829 sschatten@weta.org	Basic	1,6,11	No
Wolf Trap Foundation for Performing Arts Lori Phillips (703) 255-1933 lorip@wolftrap.org	Basic	4, 8	No
Zero To Three Frances Moore (202) 857-2998 fmoore@zerotothree.org	Intermediate	2	Yes Spanish

End of Certified Training Organization

CERTIFIED TRAINING- INDIVIDUALS

Individual and Primary Contact Information	Training Content Level	Core Knowledge Area	Trainings Offered in Other Language
Shiffaun L. Alston (202) 340-5224 alstonsh82@gmail.com	Basic	1,9,10	No
Berna Artis (202) 257-9528 Berna.artis@comcast.net	Intermediate	1,2,3,4,6,8,10,11	Yes Turkish
Ernesta Battle (301) 455-8233 dr.ernestabattle@gmail.com	Advanced	2,4,6,8,9,10,11	No
Linda Bean (202) 529-5437 X105 lbean@happyfaces247.com	Intermediate	1,6,8,9,10	No
Christophe Beard (202) 727-0969 Christophe.Beard@dc.gov		1,7,8	No
Michelle L. Brown (202) 427-4768 emmitt69@msn.com	Basic	ALL	No
Shirley E. Cooley (202) 561-5286 (202) 423-6163 secskinner@yahoo.com	Intermediate	1,3,10	No
Lisa Blackwell Danahy (301) 814-7115 lisanadahy@gmail.com lisa@dynamiclifeyoga.com	Basic	1,4,8,11 Specialized Area Yoga	No
Robert E. Gundling (703) 960-5853 secfund@aol.com rgundling@aol.com	Advanced	1,9	No
Heidi Ham (267) 337-0220 Heidi@naaweb.org	Basic	4	No
Javonne Haynes (202) 256-9214 javonne332000@yahoo.com	Basic	3 Specialized Area CPR & 1st Aid	No
Nigel Henley (202) 727-8119 Nigel.Henley@dc.gov	Advanced	1,9,11	Yes Spanish
Wanda Holmes (202) 441-0173 waholmes@starpower.net	Advanced	1,4,7,8,9	No
Jacqueline Howell (301) 873-7680 azspire@gmail.com	Advanced	4,6,7,10,11	Yes French Sign Language

Individual and Primary Contact Information	Training Content Level	Core Knowledge Area	Trainings Offered in Other Language
Angela Chester Johnson 202-409-7465 aglo1001@gmail.com	Advanced	1,3,4	Yes French
Kamila Johnson (240) 595-2790 johnsonkamila@yahoo.com kamila@kj-consulting.org	Advanced	2,4	Yes Spanish
Shaunte Jones (202) 727-2992 Shaunte.Jones@dc.gov	Advanced	1,2,6,9	No
Majorie A. Kinard 301-890-6805 makinard@hotmail.com	Basic	1, 9, 11	No
Kathy Manning (301) 423-7305 Hblues2@aol.com	Intermediate	1	No
Patricia L. Burton-McFadden (202) 604-6508 (240) 714-0014 diva_enterprize@yahoo.com divaenterprize@gmail.com	Basic	3 Specialized Area CPR & 1St Aid 1,4,5,6,9,10,11	No
Tanetta Merritt (202) 562-7908 (202) 607-1665 scfund1@verizon.net	Basic	1	No
Sarah Meytin (240) 413-6056 sarahmmsam@yahoo.com sarah.meytin@bnaishalomofolney.org	Basic	7,8,10	No
Melanie Newkirk 240-838-3776 mel.newkirk@gmail.com	Basic	7	No
Rosalind Oden (202) 441-1381 202-476-3113 rpoden@childrensnational.org	Advanced	2,3,5,7	No
Marcus Pratt (202) 701-5705 mp.cpr1st.aed@gmail.com	Advanced	3 Specialized Area CPR, 1st Aid, AED	No
Brandee C. Reed (202) 630-0228 brandee_reed@yahoo.com	Intermediate	9	No
Sunithi Selvaraj (240) 994-4827 sueselvaraj@gmail.com	Intermediate	3 Specialized Area Food Safety Manager Certification	Yes Hindi, Kanada & Tamil
Jacqueline Simmons (240) 472-9296 jsimmons0905@gmail.com	Basic	1,4	No

Individual and Primary Contact Information	Training Content Level	Core Knowledge Area	Trainings Offered in Other Language
Rosalie Slaughter (202) 257-7184 rs818@hotmail.com	Basic	3,6,8	No
Angelique Speight (202) 270-3098 angeliquespeight@yahoo.com	Basic	1	No
Stormy Stringer (202) 421-6701 (202) 689-0443 4alledu@gmail.com	Advanced	3,9	No
Donna Thomas Walter Royster (202) 689-0443 pulseone@yahoo.com	Basic	3 Specialized Area CPR & 1st AID	No
LaShawn Tracy (202) 439-0324 shawnjtra@yahoo.com tracyconsulting37@gmail.com	Intermediate	3 Specialized Area CPR & 1st AID	No
Constance Watkins (301) 421-1899 (301) 922-7716 clwatkins50@verizon.net	Intermediate	1,6,11	No
Darryl Webster (202) 207-4964 drrylwbster@aol.com	Advanced	11	No
Julie Wennekes (202) 741-6498 Julie.Wennekes@dc.gov	Advanced	1,5,10	No
Cheryl J. West (301) 925-7427 (301) 466-5086 dr.cwest.wdi@gmail.com	Advanced	8,9,10	No

End of Certified Training [Individual](#)

TRAINING PLANNING GUIDE:

Based on data, training is needed in

_____ (core knowledge area) at the
_____ level (content level)

_____ (core knowledge area) at the
_____ level (content level)

_____ (core knowledge area) at the
_____ level (content level)

I have a copy of the most current listing of certified trainers.

The trainer is certified to train in the area and at the level I am seeking.

The trainer has a current (not expired) certification.
The trainer's name and certification number will be on the certificate issued.

Training participants know that the concepts learned must be applied. Support and monitoring will be provided as needed.

After the training & application, training participants will reflect and evaluate the impact.