



project portfolio

ecclesiastical

LAN
LAN ASSOCIATES

ENGINEERING
PLANNING
ARCHITECTURE
SURVEYING

SINCE 1965



WHO WE ARE LAN ASSOCIATES

LAN Associates is one of the most dynamic full-service architectural and engineering firms in the Metropolitan area. LAN has been providing its clients with superior professional services for more than fifty years. With a staff of skilled and experienced professionals, we provide our community with sustainable, practical, and inspirational solutions. Our core philosophy is dedicated to three principles: expertise in design, dedication to our clients, and innovation that serves our clients' needs and transcend future generations.

We employ over ninety architects, engineers, design professionals, field observers, and administrative staff. LAN is responsible for over \$250 million worth of construction per year for educational, hospitality, healthcare, federal, municipal, industrial, ecclesiastical, and private clients. LAN is an employee owned company and a category 6 Small Business Enterprise (SBE) with offices located in Midland Park, NJ; Goshen, NY, and Philadelphia, PA.

OUR CLIENTS

ECCLESIASTICAL

- Archdiocese of New York
- First Presbyterian Church of Ramsey
- First Reformed Church of The Palisades
- Grace Redeemer Church
- Goshen Christian Reformed Church Youth Center
- Green Pond Bible Chapel
- Hawthorne Gospel Church
- Hudson Valley United Reformed Church
- Mission Church
- Parish of St. Stephen School
- Salvation Army
- Shiloh Bible Camp
- St. Aedan's Roman Catholic Church
- St. James Episcopal Church
- Temple Emeth



the mission church

In 2004, LAN Associates was hired by The Mission Church to design a new sanctuary and educational addition to accommodate their growing congregation. LAN performed a feasibility study to determine the site's limitation and capacity for expansion along with a space needs assessment analysis to identify critical growth areas and key spatial relationships. As a result of these efforts, a master plan was formulated to reallocate administrative and educational spaces within the existing building to account for a phased addition. LAN's design used this research to create a multi-year phased project to keep all operations functional during construction.

The lobby addition provides a gathering space that enables The Mission Church to comfortably transition between services. A café serving area, seating area and retail kiosk were installed to meet the fluctuating needs and programs within the Church. A porte cochere was constructed at the main entrance to the lobby so visitors can be dropped off under shelter.

The educational addition created a revenue-generating religious education program with three classrooms, multi-purpose room, conference room and several administrative offices. A pergola is installed on the front of the classroom addition to reduce solar heat gain.

FAST FACTS HOLMES, NY | 8,000 SF | COMPLETED 2014 | ARCHITECTURE/ENGINEERING



Since the completion of the lobby and educational additions, the congregation of The Mission Church has steadily increased and provided a more welcoming worship community.



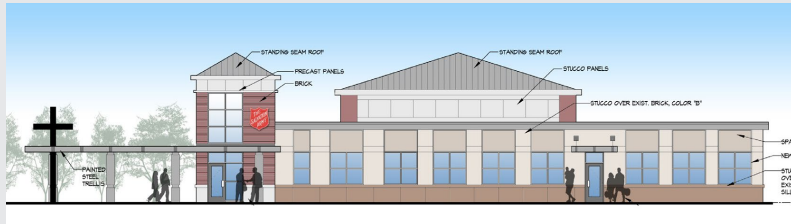
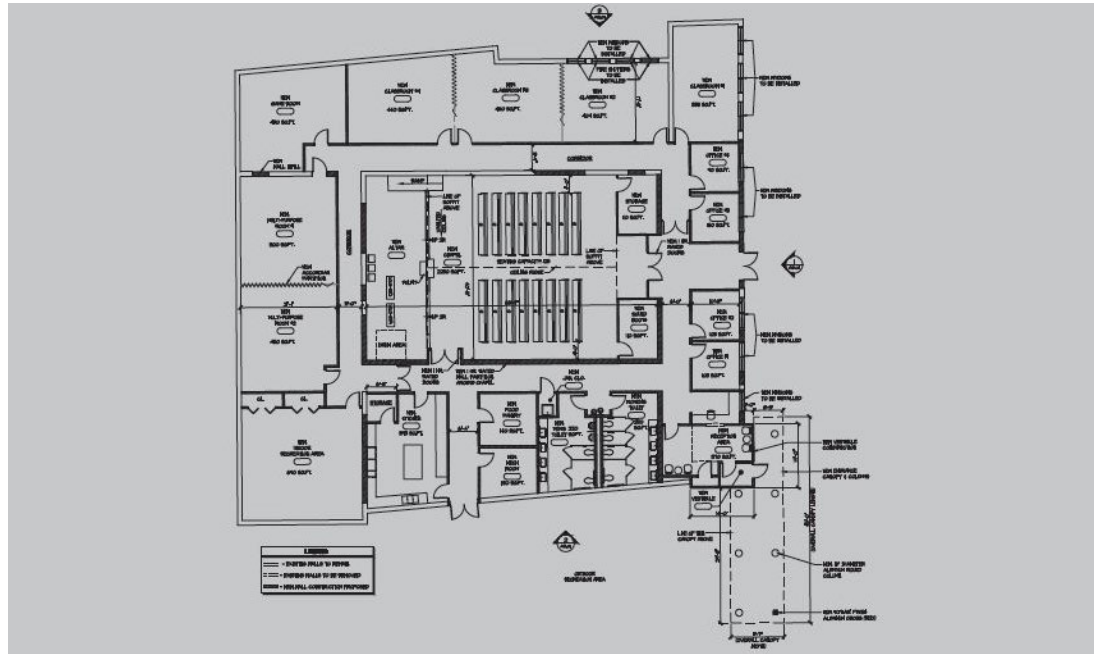


HUDSON VALLEY UNITED REFORMED CHURCH

LAN Associates was retained by Hudson Valley United Reformed Church to provide architectural and engineering services for the design & construction of a new two-story, timber frame church on a densely wooded site in a rural community. The Hudson Valley United Reformed Church (HVURC) is inspired by a traditional New England style church implementing a combination of conventional framing and heavy timber frame structural elements.

The sanctuary space is organized along a main center axis with a seating capacity for 250 parishioners, and large enough to accommodate the needs of a growing congregation. A Narthex and Fellowship Hall provide additional gathering spaces for the congregation and promote social interaction amongst parishioners before and after religious ceremonies. The Church is built into a hillside offering multiple access points at each level and is fully accessible. The lower level is utilized for Sunday school classrooms.

FAST FACTS | WAWAYANDA, NY | 11,500 SF | COMPLETED 2008 | ARCHITECTURE



salvation army

LAN Associates provided the preliminary design and drawings for the new Salvation Army worship and educational center located in Hackensack, NJ. The design called for the renovation of the 10,500 sf Bergen County Glass factory while incorporating new programmatic elements. The list of new spaces included a chapel for 130 people, offices, classrooms, multi-purpose rooms, an indoor recreation area, game room and industrial kitchen.

The intent of the renovation was to reuse the existing shell and structure. The center portion of the building provided a higher clerestory design to allow natural light within the chapel. A tower to define the entrance was added along with a canopy and signage to attract visitors and provide the architectural language of a religious center.

An important aspect of the design was to program for future expansion of the building including a new large worship space. Circulation patterns were studied to ensure an addition could be constructed without jeopardizing the intent of the original building.

FAST FACTS HACKENSACK, NJ | 10,500 SF | PRELIMINARY DESIGN | ARCHITECTURE

The Salvation Army retained LAN Associates for preliminary design of the 4,800 sf expansion to their New Brunswick, NJ location. The original building is currently undersized for their growing congregation. LAN provided the design for a larger chapel which can accommodate over 300 people and included space for a band and choir, sound booth above the seating area, and projection screens. The design also included new classrooms for Sunday school services.

Parking and delivery drop-off was a big concern to the facility. The site plan was developed to allow for one-way drop-off and loading dock access. Parking in a rear lot was configured to maximize spaces during services.

FAST FACTS NEW BRUNSWICK, NJ | 4,800 SF | PRELIMINARY DESIGN | ARCHITECTURE

hawthorne gospel

Facing accessibility issues and a growing student population, Hawthorne Gospel Church hired LAN Associates to design an addition for their iconic church. The design team proposed a five classroom addition with two multi-purpose spaces that solved their basic needs while also providing an inspiring post-worship space outside of the sanctuary.

The new addition, reminiscent of a bell tower, welcomes guests as it rises high above the landscape for all those traveling along Route 208 to see. The new exterior design also highlights the existing entrance with a terracing landscape and patio for after service activities. The two multi-purpose spaces can be combined into one large space for additional services or as a general meeting space. On the educational portion of the building, the design hosts new security improvements, flexible classroom spaces, a nursery for younger students and additional bathrooms. All of the new classrooms maximize natural daylight and will be equipped with state-of-the-art technologies. Finally, providing an ADA accessible route and a new monumental staircase, worshippers are able to flow freely throughout the proposed and existing with ease.

FAST FACTS HAWTHORNE, NJ | 8,000 SF | PRELIMINARY DESIGN | ARCHITECTURE/ENGINEERING



shiloh bible camp

LAN Associates provided complete engineering and architectural services for the new “Adventure Center” at Shiloh Bible Camp. The new structure contains a gymnasium, large group meeting room, game room and volleyball court. The gymnasium houses a regulation basketball court as well as a variety of challenge course elements. These challenge courses include a 40’ indoor climbing wall and a high ropes course suspended from the gymnasium ceiling. The meeting room, designed to seat groups up to 120 people, is outfitted with a digital sound system, projector and screen, multiple stagelighting options, a four-sided fireplace, and a kitchenette.

The construction of the addition was provided mainly by volunteers and members of clergy. This allowed Shiloh Bible Camp to greatly reduce construction fees and allot money to future additions within the camp facilities.

FAST FACTS WEST MILFORD, NJ | 14,000 SF | COMPLETED 2013 | ARCHITECTURE/ENGINEERING



green pond bible camp

A major classroom and gymnasium addition was designed by LAN Associates to augment the expanding youth outreach of the Green Pond Bible Camp Church. The full sized 9,000 sf gymnasium has locker rooms and bleachers to allow for a variety of events to occur, from social gatherings to regulation basketball games. The finished addition also includes a multi-purpose meeting room with a fireplace, grand entry foyer and future break through locations for further expansion.

FAST FACTS ROCKAWAY, NJ | 15,000 SF | COMPLETED 1996 | ARCHITECTURE



The rear of the building (which provides easier access to most of the parking) was given a prominent sense of entry via a new, visually appealing entry foyer. The entry foyer is situated to allow the Fellowship Hall and kitchen to connect directly with the rear entrance courtyard for outdoor weddings and ceremonies. An important part of the design concept was to locate the gymnasium at a lower level so that it did not overwhelm the scale of the existing church. By utilizing a natural hillside and creatively extending the Church’s internal circulation, LAN was able to design a two-story wing providing additional educational space and a gymnasium, while maintaining the residential aesthetic of the neighborhood.

