

Education Foundation 10th Anniversary

2011 Annual Report

See Page 11

PennDulium

A Magazine for Alumni and Friends of Central Penn College

March 2012



Matt Potter '06

Rural roots growing
in the Big Apple | Page 4

Central Penn College Education Foundation:

FOUNDATION DIRECTOR

Matt Lane

ASSOCIATE DIRECTOR

Sandra Box

Central Penn Alumni Association:

PRESIDENT

Michelle (Walter) Meiser '93

VICE PRESIDENT

Kristin Ergler '07

SECRETARY

Kimberly (Bindl) Dietrich '08

TREASURER

Dustin Barkman '98

CENTRAL PENN ALUMNI

ASSOCIATION LIAISON

Steve Hassinger

Central Penn College

PRESIDENT

Todd A. Milano

VICE PRESIDENT & CAO

Dr. Melissa M. Vayda

EDITORS

Matt Lane

Mary Wetzel

SENIOR WRITER

Sarah Douglass

PROJECT MANAGER

Kristi Castanzo

CONTRIBUTING WRITERS

Lezli Austen

Steve Blair '74

Patricia Brosious

Linda Buffington

LAYOUT & DESIGN

Tom Castanzo

Afire Creative Group

www.afirecg.com

717.512.0094

Address questions or comments to:

Editor, *PennDulum*

Central Penn College

600 Valley Road • P.O. Box 309

Summerdale, Pennsylvania 17093

Email: letusknow@centralpenn.edu

or mattlane@centralpenn.edu

1.800.759.2727 ext. 2263 | www.centralpenn.edu



4

Feature Photography: George Lane

- 4 Matt Potter '06: Rural Roots Growing in the Big Apple
- 10 Contributing Members of Society Give Back
- 11 Education Foundation 2011 Annual Report
- 19 Alumni News
- 20 College Corner
- 21 Campus News
- 25 Class Notes
- 30 Calendar
- 31 Alumni Eternal



11



10

PennDulum Mission Statement

The mission of *PennDulum* is to help Central Penn graduates stay connected with their alma mater, present opportunities for alumni, friends, and community members to assist current and future students, and to share ways that readers can get involved in the life of Central Penn College.

Greetings Alumni and Friends,

Thank you for making me so proud to be president of Central Penn College. The college has long been known for its career-ready graduates, and my, what careers you have! From young graduates, like cover feature **Matt Potter '06**, who know exactly what they want and skyrocket to success, to more seasoned graduates, such as alumni focus profile **Janet Quigley '80**, who transition their skills along several rewarding careers, the lives of alumni are interesting, ever-changing and fulfilling. Congratulations!

Equally gratifying to me is hearing the stories of graduates who have internalized the vital part of the college's mission to produce graduates who are "contributing members of society." Our graduates serve on nonprofit boards, walk dogs at shelters, volunteer as firefighters, and participate in golf outings, walks and other fundraising events for countless benefits, among other charitable endeavors.

So important is this aspect of a Central Penn education that, over the years, the college established a community service requirement for students. A highlight of 2011 was the volunteer effort of 80 students, faculty and staff who logged more than 400 hours of service building a massive therapy playground for children with disabilities at nonprofit Leg Up Farm in York County.

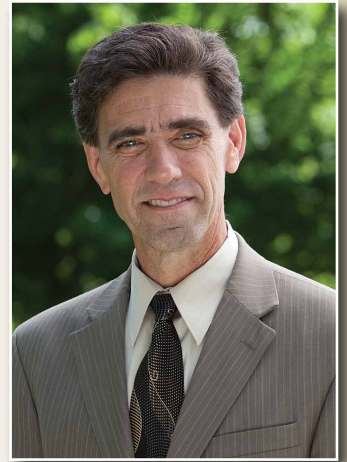
Finally, thank you for giving back to the college through your donations to the Central Penn College Education Foundation. The year 2012 is a milestone for the education foundation as it celebrates its tenth anniversary of raising and disbursing funds for student scholarships. Under the leadership of Director Matt Lane, the foundation has become more effective in assisting financially disadvantaged students to remain enrolled.

The education foundation is blessed to have other leaders, too, through its board of trustees. Especially noteworthy is the ongoing commitment of William B. Boles, CPA and partner with Boles, Metzger, Brosius & Emrick of Harrisburg, Pa. At the end of 2011, Bill stepped down as chairman of the foundation's board of trustees but, thankfully, he continues to serve as a trustee. His guidance during the foundation's entire 10-year history was exceptional and inspiring.

Please continue to share your personal and professional stories with me. They make my day!



William B. Boles,
Chairman, Central Penn
College Education
Foundation (2002 – 2011)

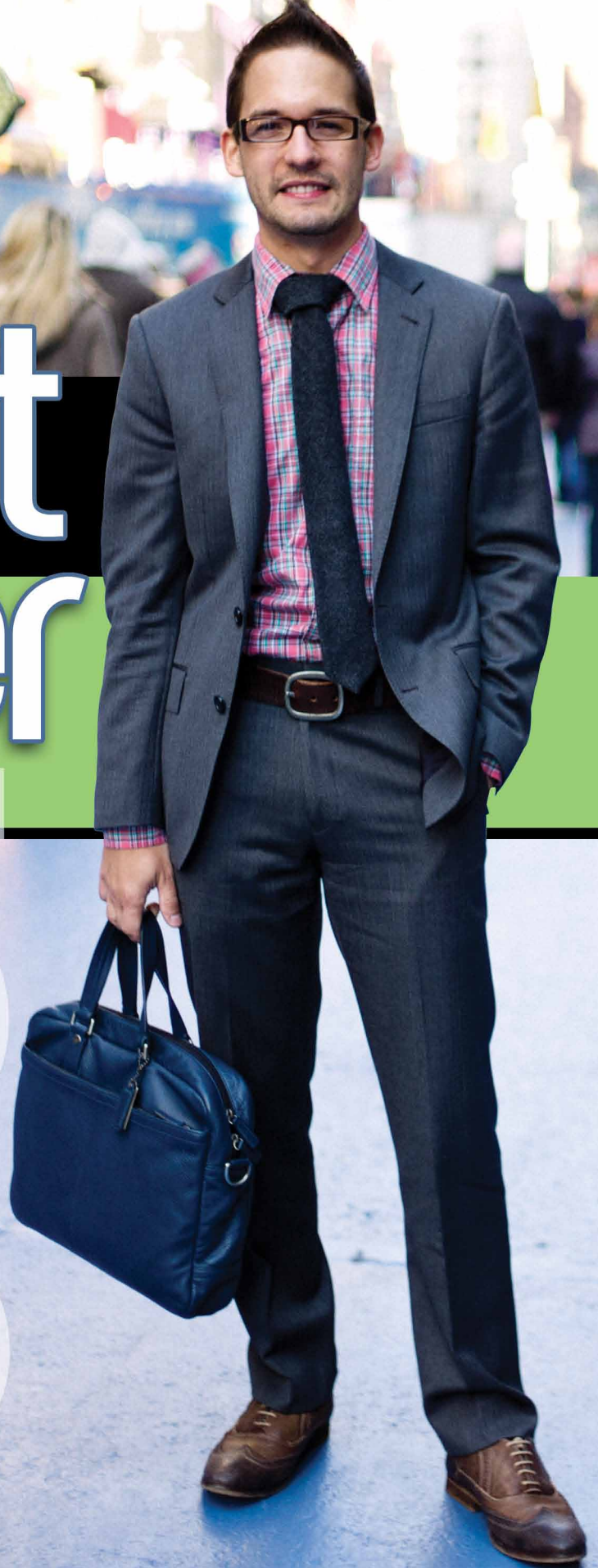


Keep Smiling,

A handwritten signature in black ink that reads "Todd A. Milano". The signature is written in a cursive style with a long horizontal stroke at the beginning.

Todd A. Milano
President

Matt Potter



OS

if

you think a 26-year-old from a rural Pennsylvania town might have difficulty making a name for himself in New York City, think again. **Matt Potter '06** is responsible for the training and development of the more than 100 team members at J. Crew's collection flagship store in SoHo, which specializes in higher-end, exclusive products. He also is in charge of all non-apparel merchandising. Potter is not just coping with his responsibilities. He is excelling.

Rural roots growing in the Big Apple

BY SARAH DOUGLASS

POTTER POINTS OUT THE DISPLAY that his visual merchandising team created. The colors pop. The same vibrant, bright orange-red I see in the cashmere sweaters, beaded necklaces and scarves is painted throughout the entire J. Crew store where Potter serves as associate store manager of training and non-apparel merchandising.

"I'm obsessed with that color," Potter admits as he gestures toward the sales floor where he spends six out of eight hours of his work days.

"Is it called salmon?" I ask. He laughs good-naturedly; shaking his head, as if the idea of the latest color of the season being named after a fish is preposterous. He furrows his brow and stewes over it for a moment.

"Orange citron," he muses as he glances over at me with a grin and continues the tour.

The eternally creative Potter has an amazing eye for detail that sees beyond just marketing and merchandising. He inspires. His broad base of knowledge in human resources, paired with

his natural ability to see the positive in everything, makes him an incredibly strong leader. On top of that, he looks like he is pulled straight out of a J. Crew catalog. Donning the brand's woven shirt, tie and Ludlow blazer, paired with rolled up skinny jeans and camp socks, he's not kidding when he says, "I really love J. Crew."

Wanting to be a teacher as a child, his dreams for the future have come full circle as he has stepped into the training role at J. Crew. He is currently heading up a new training program for the district, comprising all the stores in downtown, midtown and uptown Manhattan. He motivates and empowers others to do better, not through negativity, which he's completely against, but through pointing out opportunities and turning them into successes. He sees the best in everybody and works to encourage them to do even better.



He likes to be on the go. He is passionate and likes to use the words ‘obsessed’ and ‘crazy’ as if on repeat. But, mostly, he likes to continually improve.

THRONGS OF PEOPLE DART IN AND OUT of the store while Potter wraps up the tour. It is a chilly December afternoon, and with the holidays only two weeks away, the shoppers of New York City are on the prowl. As we walk, he greets the employees by name and the rapport is natural. Two of his managers banter with him and ask for signed copies of this story. I’m surprised to learn that he started a mere two months ago. He is a decent guy, and it shows.

Although training is Potter’s priority, he is also making a mark in what his store director, Tomer Harel, calls “the world of non-apparel.” Harel explains that the Prince Street location has been enjoying sales in non-apparel that it has not seen in quite a long time, mainly due to Potter’s leadership. Sales were up 25 percent the day of this interview and Potter has no intention of stopping there.

“Bringing Matt on board was a no-brainer,” says Harel. “He is a perfect fit with his experience, and he has great energy and passion about his industry and work.”

To get where he is today, Potter worked his way up the corporate ladder at Target Corporation, Tommy Hilfiger and Aéropostale. His retail career started in high school seven years ago when he was the assistant manager of his hometown Dollar General store. While at Central Penn, he worked part-time at Banana Republic and was also the assistant manager and marketing director for a juice and smoothie bar.

A marketing internship at Target, which he acquired to fulfill his graduation requirements at Central Penn in 2006, turned into a job offer. During his two-and-a-half-year stint at Target, Potter served as the executive team leader for softlines/

guest experience, led a team of six managers and was in charge of the non-apparel and apparel business for the 80,000 square foot, \$42 million store.

To broaden his experience, he moved on to Tommy Hilfiger’s Reading, Pa. location where he oversaw total store operations and customer service as store manager. Potter’s next move was to Aéropostale’s Lancaster, Pa. Tanger Outlet location in 2009.

When asked about Potter’s work ethic, Mike Baumer, the store manager who hired him, says without hesitation, “He doesn’t just work, he does great work. He is hard working to the tenth power.”

Due to the quality of Potter’s work and leadership ability at Aéropostale, he was recruited to open the new Lancaster, Pa. Park City Center location. Corporate was so engaged with his visual direction for the floor design at Park City that they asked him to help open the flagship store in Times Square.

Faced with this major life change, he naturally called his mom for advice. Kris Potter is an extreme fan of making



analytical lists, which both her sons tease her about, so she of course recommended he analyze if this new adventure could be worthwhile. He succumbed to the virtue of a pros and cons list. All arrows pointed toward the Big Apple, so Potter packed up his things and headed to the concrete jungle.





Each time I moved I asked myself, 'Is this company right for me? Does its brand align with my core values?'

"I think in his heart, he knew that was what he wanted to do," Kris Potter says. "Also, I said go, go, go!"

When describing the whirlwind opening of the Times Square store in 2010, his voice lowers. He says, "It was crazy, intense, chaotic ... nonstop." And the adjectives just kept coming.

A team of 500 people worked on the opening, and Potter threw himself completely into his new position as visual manager. One year and one promotion later, Potter was associate store manager of visuals, winning numerous awards for excellence and visual presentation and leading a team of five managers and 25 team members.

However, after nearly two years, the glittery intensity of a Times Square flagship store and a brand designed for teenagers started to lose its appeal. Potter was ready for a change of pace. Lucky for him, J. Crew—a brand that speaks to who he is—had found him on LinkedIn and was impressed by his work.

At the mention of LinkedIn, Potter puts the brakes on the interview and asks me seriously, "Have you ever been on LinkedIn? It's an amazing networking tool."

He immediately pulls up his LinkedIn profile. While scrolling through the positions he has held over the years, he acknowledges that one of the things he worries about is that switching jobs too frequently could perhaps reflect poorly on him.

He can rest easy. In Potter's case, the difference between job hopping and moves related to strategic career decisions is obvious. You can see his progression up the ladder in both a horizontal and vertical fashion. You can see the critical skills he attained with each step. Plus, he has stellar recommendations from former employers.

“Each time I moved I asked myself, ‘Is this company right for me?’” describes Potter. “Does its brand align with my core values? Do I have the opportunity to grow and develop?”

This thought pattern allowed Potter to begin in smaller markets with very low retail projections, and move up to a metropolitan market that achieves flagship numbers.

“Critical analysis and decision making are crucial in personal development and life’s progression, and this has allowed me to not only lead a career that is fulfilling and successful, but also attain a personal life that is well educated and analytical,” he says.

His mother’s sound approach to life’s decisions echo through this very grounded young man’s words.

Waymart’s population is 1,341 according to the U.S. Census Bureau. New York City’s population is 8,175,133.

Despite the differences, it still takes about the same time to get places.

It takes 45 minutes to get “anywhere” from Waymart, according to Potter. In the city, it takes 45 minutes for him to ride the subway from Astoria Boulevard in Queens to work at Prince Street in SoHo.

“Coming from an area where there are more cows and trees than there are people, this is huge,” he says gesturing out to the city. “It’s night and day. It’s a whole different mentality and a big adjustment.”

He has learned to be more assertive in the bustling, congested city. He has also

learned who you are. I haven’t changed who I am as a person, an individual, a friend and a colleague.”

He keeps himself in check every now and then by chiding himself, “Hey, Matt! You’re from the backwoods!”

A SALES ASSOCIATE IN BRIGHT RED PANTS holds up a necklace and tells a customer, “You’re going to love this one.”

“It’s for my mother-in-law.”

“Well, I think she’ll love it.”

The customer inspects the jewelry and Potter offers for her to sit down next to us, making room for her on the bench. As courteous as he is now, it’s hard to believe that as a kid he was a tough cookie with a stubborn streak.

He struggled in elementary school while his gifted brother pulled straight A’s. A vision problem made it difficult for him to focus on the papers in front of him.

“It was frustrating to go to therapy again and again, but over the long term my eyesight started getting better and so did my grades,” he recalls.

His grades got so much better, in fact, that he was making the honor roll every quarter in middle and high school. He was part of the National Honor Society, Future Business Leaders of America, scholastic arts competitions, you name it.

Waymart is two and a half hours away from Harrisburg, Pa., so Potter didn’t have far to go to college at Central Penn’s Summerdale campus. Nevertheless, moving from Waymart to the capital city of Harrisburg was a big deal for him.

He enrolled as a business administration student with a management concentration, but quickly switched to marketing so he could learn about specialty areas like visual merchandising. Central Penn was a perfect fit, according to Potter. The year-round program made sense. Learning to live on your own in a townhouse with roommates felt right. The college’s core values and requirements to dress the part of a professional appealed to him.

I haven't changed who I am as a person, an individual, a friend and a colleague.

IN THE NON-APPAREL SECTION OF THE STORE, Potter leans a bit too casually against the window display and knocks over a display of MacAlister wedge boots. Crisis dealt with, we move to a bench in the back of the store.

Jazzy holiday music plays in the background, and Potter smiles, revealing his laugh lines. For about the fifth time today, he says, “I’m really honored that Central Penn picked me for this article. I can’t believe it.”

He speaks slowly and eloquently, with true humility. Potter talks about his hometown and the stark differences between Waymart, Pa. and New York, N.Y. In rural Wayne County, Waymart got its first traffic signal a few years ago, while New York City has more than 12,000. Waymart locals hang out in the most popular places in town, the Waymart Hotel and the Gravity Inn. New York City locals avoid the most popular places in the city like the plague.

learned to be more patient. Although he doesn’t think he will ever be dubbed a true New Yorker, he is over the culture shock and has learned that he loves being in an area that is “always living.” This was especially evident during a weekend getaway to Connecticut.

“I couldn’t sleep because it was too quiet,” Potter remarks, grimacing from the thought. “I was waiting for the sirens and alarms to start going off.”

He is still in awe that he lives in New York City and feels it has helped him develop a better sense of who he is. He is all too aware that some people can lose themselves here.

“At the end of the day, I’m still from the sticks and that’s who I’ll always be,” Potter says. “My environment is just different. It comes down to adapting and



Professor of Business Administration Diane Pickel remembers that Potter understood the industry from day one. He understood consumer trends, targeting and demographics—all those marketing buzzwords.

“I am so proud of him,” Pickel says. “I feel privileged to have had him as a student. He had such passion. We hope we make a difference in a student’s life, but he made a difference in mine. Matt really was a ‘You can. You will.’ student.”

The feeling is mutual. Potter credits Pickel as one of the teachers who have had a huge influence on him.

“It’s not just about teaching for her,” he says. “She’s just so caring. You can tell she loves what she does.”

When we discuss the growth the college has seen since he graduated—the new Lehigh Valley location and educational partnerships, increases in enrollment, the possibility of achieving university status in the future—he lights up.

For a second I wonder if he’ll jump on the bench and start cheering with Central Penn pride.

He says excitedly, “It seems like the college is going in such a great direction and having teachers like Professor Pickel are going to make the college continue to excel and grow.”

After graduating summa cum laude from Central Penn, Potter earned his Master of Business Administration degree with a minor in human resource management from American Intercontinental University. As a full-time student with a full-time job, it was difficult, but he turned his dream into reality, graduating with a 4.0 GPA.

He reflects on getting from where he was to where he is now, and says, “I didn’t get here without the help of the people around me. It started with my parents. And then Central Penn and American Intercontinental helped me to become a professional and see that side of myself, to be more knowledgeable of the business world.”

He pauses. “Without that, I wouldn’t be in New York,” he adds. “I wouldn’t have anything, so it’s a very humbling experience.”

It’s easy to tell where Potter’s positive personality and energy comes from, especially after an hour-long phone call with his mother. She is animated, friendly and very much the proud mom. She tells me, “I enjoy talking about Matt because he really is a success story from day one. I’m so proud of him because of how he started; the difficulties he overcame to get as far as he did.”

Her voice trembles. She continues, “He transformed from a needy child to an amazing young man, and to sit back as a parent and watch him develop? It’s just been amazing.”

IT’S GETTING DARK OUTSIDE THE STORE.

“Is it 5 p.m. already?” Potter says with surprise as he looks at his watch. We’ve been talking nonstop for hours and wrap up by covering his plans for the future.

When asked where he thinks he’ll be in five years, he says he has no clue. Not only is he okay with the unknown; he’s motivated by it.

“That’s the beauty of working in retail,” he says with his hands moving in circles. “Retail is a dynamic, interesting business. Opportunities can arise at any minute.”

What is most important to Potter currently, though, is forging ahead with his career at J. Crew “Potter-style,” meaning 110 percent.

“Someday I would love to be in J. Crew corporate doing human resources or visual merchandising,” he confesses, almost begrudgingly. He would miss the interaction with his team on the floor. Yet, Potter knows enough about himself and making career decisions to know he needs to be adventurous to move ahead.

One of his mother’s sayings has followed him throughout his career: “Be the best that you can be, honey, and don’t look back.”

“I can proudly say that I have never looked back on the decisions I have made and I will continue to do the best I can do every day of my career and my life,” Potter says. “It took a lot. Everything has led up to this, and the whole process has been a trip. I think this is what I’m most proud of, that I’m here.”

We walk out of the store toward the subway, and he points out the city at night.

“The city takes on a whole different force at night,” he reflects.

“It’s beautiful. It’s scary. It’s amazing.” 📍



by Melissa Vayda, Ed.D.
Vice President & CAO

"It is one of the most beautiful compensations of this life, that no man can sincerely try to help another without helping himself."
(RALPH WALDO EMERSON)

"The influence of a beautiful, helpful character is contagious, and may revolutionize a whole town." (COLLIER GRAHAM)

The opportunity to give back builds the characters of many.

While faculty and staff touch the lives of countless students over the years, it is what the student does beyond Central Penn's doors that demonstrates if we have been successful in fulfilling our mission. Much emphasis is given to graduate employment or continuing education. However, a lesser discussed aspect of our mission is the portion that focuses on "contributing members of society." To us at Central Penn, this means we believe it is important to instill a sense of volunteerism or philanthropy within our students from day one.

The college has taken strides to ensure it is clear that this aspect of our mission is vital. Students have a graduation requirement of community service hours (25 hours for associate degree students and 50 hours for bachelor's). Faculty and staff are provided volunteer hours, and are encouraged to participate in college-sponsored projects with students. Faculty and staff role modeling service and working side-by-side with students helps further emphasize the importance of continuing to give back throughout your lifetime. Additionally, the college offers 'business casual dress down days' to raise money for charities, and annually provides a level of matching when an employee makes a contribution to his or her favorite charity. The college even

provides gratis office space for the Court Appointed Special Advocate Association (CASA), an advocacy group for children in foster care.

College-supported or -organized volunteer or fundraising opportunities are scheduled throughout the year. One of the most successful recent volunteer projects that Central Penn participated in was held at a children's therapy facility called Leg Up Farm. Eighty students, faculty and staff provided more than 400 hours of community service helping to build a massive therapy playground for children with disabilities.

The holiday season was also filled with giving. The college hosted an 'angel tree' and provided 40 people at the YWCA Harrisburg shelter with gifts. Canned food was collected for the Bethesda Mission and blankets and pet food were collected for the Humane Society.

This year will be filled with many ways to give back—and we welcome participation from alumni. You can visit centralpenn.edu/givesback to see our schedule of upcoming service events. This would be a perfect way to demonstrate how you became a contributing member of society! For more information, contact melissavayda@centralpenn.edu.





CENTRAL PENN COLLEGE EDUCATION FOUNDATION

2011 ANNUAL REPORT

& HONOR ROLL OF DONORS

The Central Penn College Education Foundation **celebrates its tenth anniversary** of raising funds for student scholarships. Thank you for being a part of its success.



Milestones Should be Celebrated

By **Matt Lane** | EDUCATION FOUNDATION DIRECTOR

Happy anniversary to all of you who support or have supported the Central Penn College Education Foundation in any way! This tenth anniversary is worth celebrating when you consider the hundreds of students who benefited from the foundation's existence. Higher education, like all things of value, is expensive so scholarships are very meaningful to the far majority of Central Penn students who require financial assistance. Thank you for helping more than 500 high-achieving students to afford Central Penn College.

As in any successful organization, the education foundation's origin began with a few inspirational individuals. In 2002, the first trustees took a chance when they set up a new nonprofit organization to raise funds

Matt Lane, foundation director and Sandra Box, associate director



for need-based scholarships. They could not predict the response of prospective donors when they first asked for contributions to help fund college expenses for financially-challenged students.

Their inspiration paid off and in less than ten years, the education foundation garnered more than \$2.5 million in assets. The early trustees' foresight in creating an endowment instead of following a spend-as-you-receive philosophy means that invested donations will help students in perpetuity.



This year is a milestone for me, too, as I celebrate five years as the foundation's director. It has been my pleasure to serve Central Penn College in this position. The generous spirit of donors means that I have been introduced to some of the finest individuals in our community and beyond. Each year, I meet business leaders, foundation executives and grateful alumni who care more about others than themselves.

Even in lingering economic conditions, the year 2012 looks as promising as others. Caring, philanthropic people seem to find their way to my door. Thank you again.

Early Leaders in the Education Foundation's History

- Ronald C. Bailey of Bailey Family Foundation, Fla., original trustee, major donor who recommended current scholarship disbursement process, retired president of Strayer University
- William B. Boles, CPA, original trustee, chairman from 2005–2011, guided board through first strategic plan, partner in Boles, Metzger, Brosius & Emrick of Harrisburg, Pa., established endowed scholarship in firm name
- John and Judith † Byler of Lancaster, Pa., major donors who established one of foundation's first endowed scholarships, ten Byler Family Scholarships awarded in 2011 alone
- J. Martin Engle '29 † of Mechanicsburg, Pa., original trustee, major donor who helped craft foundation's bylaws and mission, founder of Engle Business Systems. Grandson Timothy Engle sits as a current trustee.
- Charles "Tremendous" Jones † of Mechanicsburg, Pa., motivational speaker who brought well-known guest speakers to campus as fundraising events, which resulted in hundreds of thousands of dollars for the foundation. Central Penn's library is named after this foundation supporter.
- Todd A. Milano of Mechanicsburg, Pa., original trustee, helped to create bylaws and mission, along with wife Linda '78, established a series of endowed scholarships in others' names, fundraising leader for the foundation, Central Penn College President
- Judith Redlawsk of Etters, Pa., member of college's board of directors, original and continuous supporter of foundation
- Harold J. Stahle, Jr. '44 of Mechanicsburg, Pa., original trustee, major donor with endowed scholarship in his name, retired engineering coordinator with AMP Inc.

† deceased



Engle Society

Engle Society honors faculty and staff

On June 10, 2011, a luncheon was held in The Conference Center on the Summerdale campus to recognize the inaugural members of The Engle Society. This newly created society recognizes exceptional philanthropy among faculty and staff to the education foundation at an annual level of \$250 or more.

The Engle Society is named in memory of the late J. Martin Engle '29 and his wife Ethel.

J. Martin Engle '29 was a founding trustee of the current Central Penn College Education Foundation. The Engles became successful entrepreneurs during the Great Depression and World War II. J. Martin Engle retired as president and owner of Engle Business Systems in 1978. Central Penn awarded its first Doctor of Humane Letters to J. Martin Engle on May 4, 2001.

The Engle Society, a fitting tribute to this remarkable couple in the education foundation's history, welcomed the following members in 2011 (listed to the right):



Left to right: Russell Kulp, assistant dean of bachelor's degree programs and wife, Stella, pictured with Foundation Director Matt Lane. The Kulp's were honored at the June 10 Engle Society gathering for their longtime support of students through the education foundation.

- | | | |
|--------------------------|-----------------|-------------------|
| Dr. Dilip Abayasekara | Kathy Hepner | Steve Shoemaker |
| Cynthia Beers | Russell Kulp | Linda Shook |
| Linda Buffington | Matthew Lane | Lynn Shuster |
| Justin Coleman | Spencer Martin | Ric Trevino |
| Howard Davison | Michelle Meiser | Richard Varnecky |
| Rodney Groff | Todd A. Milano | Dr. Melissa Vayda |
| Sue Hartman | Janice Moore | Joanne Weaver |
| Steve and Joan Hassinger | Maria Querry | Carrie Widdowson |
| | Luis Rosa | Erika Wilkinson |



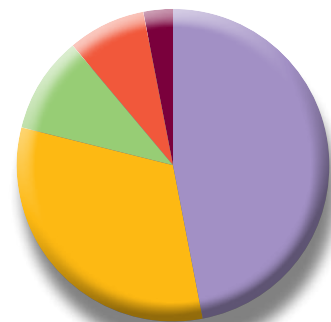
NUMBER OF SCHOLARSHIPS AWARDED

Student scholarships awarded in 2008:	84	(\$54,750)
Student scholarships awarded in 2009:	131	(\$69,550)
Student scholarships awarded in 2010:	128	(\$71,500)
Student scholarships awarded in 2011:	143	(\$77,750)

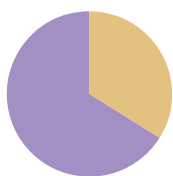


2011 DONOR GIFTS: \$391,118

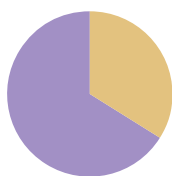
▶ Foundations	\$ 185,700	(47%)
▶ Friends	\$ 126,381	(32%)
▶ Alumni	\$ 36,311	(10%)
▶ Businesses	\$ 30,220	(8%)
▶ Faculty and Staff	\$ 12,506	(3%)



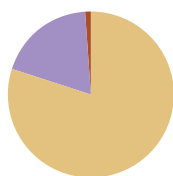
FALL 2011 STUDENT STATISTICS TOTAL STUDENTS: 1,485



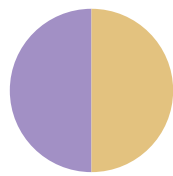
Traditional: 34%
Continuing Ed: 66%



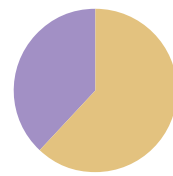
Online Degree: 34%
Classroom: 66%



Bachelor's Degree: 80%
Associate Degree: 19%
Other: 1%



Full time: 50%
Part time: 50%



Female: 65%
Male: 35%

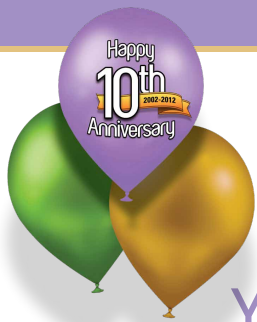
▶ Tuition: \$396 per credit hour
Average student course load:
• full time – 12 credits
• part time – 6 credits

▶ Housing/Board Fees: \$2,000 – \$2,400 per academic term

▶ Employed in chosen field or continuing education within one year of graduation: 83.7%*

▶ Minority: 34%

*Central Penn College 2009 – 2010 One-Year Graduate Follow-Up Report, July 7, 2011. For more information, visit www.centralpenn.edu/success



Young graduates credit **college and scholarship donors** for early success

Richelle Counselis '11 of New Cumberland, Pa., is an example of a young Central Penn graduate on a fast track to success. Sixteen months after graduating at the top of Cedar Cliff High School's class of 2009, Counselis graduated summa cum laude from Central Penn with an associate degree in office administration.

After interning at Nationwide Insurance in Harrisburg, Pa., while a Central Penn student, Counselis was offered a position in the material dispatch unit. She received her first promotion to claims adjuster at Nationwide after less than one year with the company.

While attending Central Penn, Counselis was happy to learn that a competitive scholarship program was available. She was very pleased to be

awarded a \$1,000 Kunkel Foundation Scholarship in summer 2010.

Counselis returned to Central Penn in fall 2011 to complete her bachelor's degree in business administration. For the future, one of her longer term goals is to obtain her MBA and advance into management at Nationwide.

Travis Scotto '11 of Mechanicsburg, Pa., selected Central Penn College after graduating from Bible Baptist School in Shiremanstown, Pa., for several reasons: its proximity to home, hands-on curriculum, accelerated pace, relative affordability and scholarship opportunities.

Scotto received four scholarships through the education foundation, including a Seven Trees Foundation Scholarship, Peter and Mary Phillips

Scholarship, Lee Cave Memorial Scholarship and Annual Fund Scholarship.

After earning his bachelor's degree in information technology, Scotto quickly put his education to work by accepting an information technology position with the Supreme Court of Pennsylvania.

Scotto and his family were so pleased with the marketable skills and financial support he received at Central Penn that younger brother, Curtis, decided to enroll.



Travis Scotto '11

Alumni association **integral player** to foundation's success

Alumni are important to the long-term financial success of the education foundation's mission of raising funds for student scholarships. Gratefully, the Central Penn College Alumni Association agrees and is an active partner with the education foundation to achieve this goal.

"Alumni remember very well the challenges of financing their Central Penn education. So we are happy to help the education foundation in any way we can."

Central Penn College Alumni Association President **Michelle (Walter) Meiser '93** explains, "Alumni remember very well the challenges of financing their Central Penn

education. So we are happy to help the education foundation in any way we can."

The alumni association is a consistent sponsor and raffle prize donor of the Central Penn golf outing. As Education Foundation Director Matt Lane says, "I can count on the alumni association to be one of the first sponsors to commit to this fundraising event. Also, watching alumni association board members mingle at the golf luncheon is a tradition I enjoy."

The alumni association annually offers several scholarships at Fall Harvest, and funds these scholarships through the education foundation.

Lastly, the alumni association indirectly helps the education foundation through its social events. Annual family events like those held in 2011 at Knoebels Amusement Resort and the Harrisburg Senators ballpark provide opportunities for graduates to stay connected.

Sponsor **Capital BlueCross** leads corporate giving in successful golf outing

The business community came out in style as a record number of sponsors and golfers made the 40th anniversary golf outing the most successful outing to date. More than \$37,000 was raised for student scholarships on August 19, 2011 at Armitage Golf Club in Mechanicsburg, Pa.

A full course of 140 golfers, representing nearly 50 businesses and organizations, showed their commitment to Central Penn students by putting together teams or signing up as sponsors. Everything was up for sponsorship—course holes, golf carts, printed programs, meals and beverages. Hundreds of items were donated by businesses and individuals as give-a-ways and raffle prizes.

To celebrate the 40th anniversary, 40 quotes from grateful students were printed on tee signs that dotted the course. The golfers remarked that it was rewarding to read these student statements as they made their way through the popular golf course.

Traditions are important at every event and this outing was no exception. Capital BlueCross presented \$1,000 scholarships to physical therapist assistant students Shannon Spangler and Mike Janouris during the festive luncheon program, which was emceed by Central Penn scholarship recipient Alex Hartzell.

A few other top sponsors included Lenker Excavating, JPL, Trout Ebersole & Groff, Harrisburg Hotel Corporation, Shoemaker's Custom Framing, M&T Bank and the Turnbridge Group of RBC Wealth Management.



(above) Left to right: Education Foundation Director Matt Lane pictured with Capital BlueCross scholarship recipient Shannon Spangler, Capital BlueCross representative Shawn Hughes and Capital BlueCross scholarship recipient Mike Janouris. Both Spangler and Janouris are physical therapist assistant majors.



(left) The financial aid team celebrates the 40th annual golf outing with Sir Will.



"As the oldest of six children, I appreciate the help to finance my education."

—COURTNEY HORCHAK



"I believe service to others is what supports life. This is why I'm attending Central Penn."—MIKE JANOURIS



"Scholarship help is one of my many blessings."

—ASHLIE MILLER



Honor Roll of Donors

The Honor Roll of Donors represents gifts received by the Education Foundation from January 1, 2011 to December 31, 2011.

1881 Founders Society Level \$10,000 and above

Anonymous
John Byler
Central Penn College
Duane and Susan Greenly
Hall Foundation
James and Tamara Hepfer
Todd and Linda (Meiller) '78
Milano
Donald B. and Dorothy L.
Stabler Foundation
Harold J. Stahle, Jr. '44
Tremendous Living Foundation

Golden Bridge Level \$5,000 to \$9,999

Anonymous
Park and Gail Barner
Capital BlueCross
John Crain Kunkel
Foundation
Peter and Grisel Moyer
Norfolk Southern
Foundation
Seven Trees, Inc.

Boyer House Level \$2,500 to \$4,999

Dermody Properties
Foundation
Enterprise Holdings
Foundation
Marvin '76 and Anna Mae
Fultz
William and Karen Gladstone
Gladstone Group of NAI/
CIR
Harrisburg Hotel
Corporation
Pennlantic Systems for
Business

Knights Level \$1,000 to \$2,499

Bailey Family Foundation
Dr. Charlotte Beason
Thomas Beauduy, Esq.
Boles, Metzger, Brosius &
Emrick, PC
Jennifer Buehler '91
Conrad Siegel Actuaries
Edwin and Carol Engerer
Timothy Engle
Thomas Fraticelli, Esq.
Russell and Stella Kulp
JPL
Matt and Amanda Lane
M&T Bank
Jean Milano
Janice and Steve Moore
George and Rita Patterson
Foundation
Harlon Robinson
Luis Rosa
Hasu and Hersha Shah
Trout, Ebersole & Groff
Turnbridge Group of RBC
Richard Varmecy
Dr. Melissa Vayda
Wells Fargo Advisors

University Run Level \$500 to \$999

Dr. Dilip Abayasekara
AmeriChoice Federal Credit
Union
Earl Beyer
George D. Boyer & Sons, Inc.
Brewer Flooring
Central Penn College Alumni
Association
Justin Coleman '06
Corl Communications
Thomas and Nancy Crognale
Emu Country Farmstore
Follett Virtual Bookstore, Inc.
Graphcom, Inc.
Esmeralda Hetrick
Edward and Karen Holtzman
Dennis Kenes
Dorothy Kronemer '81
Lenker's Excavating
Robert Lowrie

Members 1st Federal Credit
Union
Momentum Management
Consulting
Morefield Communications
Overnight Office, Inc.
PA CASA
Phillips Group
Quality Digital Office
Shoemaker's Custom Framing
Lynn Shuster
Ric Trevino
Dwight '73 and Debbye Utz
G. Thomas Waite, III
Joanne Weaver
Autumn Wolfe
York Waste Disposal
Drs. Glenn and Marsha
Zehner

College Hill Level \$250 to \$499

Afire Creative Group
Appalachia Technologies
Cynthia Beers
John and Patricia Brosious
Cianfichi Scholl Ludwig
Clean Team
Floors, Etc.
Michael Gresalfi
Gunn-Mowery, LLC
Gerald and Lyn Hempt
Kathryn Hepner
Phyllis Hicks
Kelly, Parker & Cohen, LLP
William Kobel '81
Michelle (Walter) Meiser '93
Donald and Nancy Miller
PA American Water
Paytime, Inc.
Pennsylvania Women's
Legislative Exchange
Brian '10 and Kathy Shepard
Merrick and Linda Shook
Mr. and Mrs. Carl Smucker
LaRue Snyder
Strategic Communications
Michael Thompson
Carrie Widdowson
Erika Wilkinson
Wilke Ingenuity

Summerdale Level \$100 to \$249

Kathy Andersen
Jeannette Archer-Simons
Michael '73 and Kathryn '76
Aumiller
Earl and Nancy Besch
Brickman Group (Robert
Brown)
Linda Buffington
Dave and Theresa Cave
Russ Carfagno
Howard Davison
Devaney & Co.
Courtney Drahovsky
Dr. Richard Dumaresq
Susan Exon '78
Juan Garcia-Tunon
Jill Hallam-Miller
Steve and Joan Hassinger
Patrick J. Hughes
Ruth (Black) Kerstetter '48
Megan Luft
Janis Peck
Leonard and Barbara
Portzline
Prudential Thompson Wood
Real Estate
Fred and Charlotte Rexon
Kathleen Rider '91
Marian Soutner
Scott Winters
Kathleen Trost '76
Ann Young

Maroon & Orange Level Up to \$99

Mary Anderson Alander '38
Lezli Austen
Ed and Linda Bechtel '66
Crossgates, Inc.
Charles D. Fox
Rodney Groff
Kimberly Gusic
James Heckman
Janice (McMillen) Hench '54
Florita Hobaugh '76
Sharon Lavine '66
Edward Liesch
Nikki Marhefka
Dr. Barbara Maroney

Paul Messer
 R. Scott Miller
 John W. Packer
 Dr. Nicole Patterson
 Diane Pickel
 Beth Romanski
 Laurel Shearer '03
 Dr. Brian Shelley
 Paul and Beverly Spragg
 Meredith Sterner
 Edward Tosti
 State Senator Patricia H. Vance
 Ashley Vervaeke
 Wellness Committee

✦ The education foundation celebrates the generosity of special donors with cumulative giving of \$10,000 or more through lifetime membership to its Arboretum Society. Additional members are:

Anonymous †
 Polly and Wayne Dietrich
 Drayer Physical Therapy
 J. Martin Engle '29 †
 Ruth Evinger '40
 Harsco Corporation
 Derek and Margaret Hathaway

Lawrence and Julia Hoverter Foundation
 Charles "Tremendous" † and Gloria Jones
 Paul and Jane Meyer Family Foundation
 Edward † and Helen † Norford
 Rhea (Paul) Reese '40 †

†deceased

2011 The Year in Review



Left to right: Linda (Meiller) Milano '78, student Cristy Doyle, Education Foundation Director Matt Lane, and friends Duane and Susan Greenly enjoyed lunch at the Boyer House with President Todd A. Milano on Nov. 15, 2011. The Greenly Family Foundation funded an endowed scholarship for continuing education students at Central Penn in 2011.



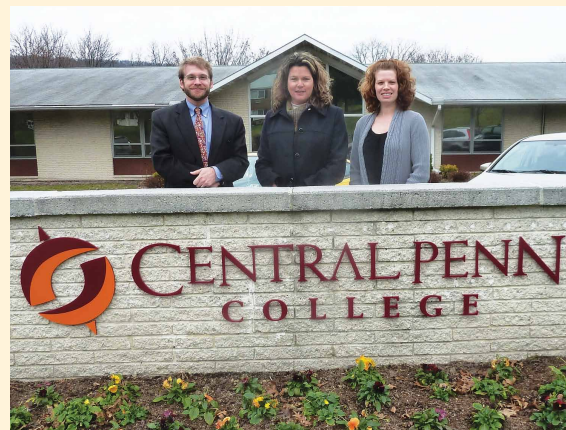
Education Foundation supporter Jim Hepfer visited with President Todd A. Milano on Oct. 14, 2011 for the Capital Area Prayer Breakfast held at The Conference Center. President Milano was keynote speaker of the 2011 event.



President of Tremendous Life Books Tracey Jones (right), pictured with Vice President & CAO Dr. Melissa Vayda (left). Tremendous Life Books, through its Tremendous Living Foundation, generously supported the education foundation's 2011 campaign. On Sept. 7, 2011, Jones spoke on leadership at the College—promoting her new book, "True Blue Leadership: Top 10 Tricks from the Chief Motivational Hound."



Representatives from the Bailey Family Foundation of Tampa Fla., came out to support the 40th anniversary golf outing for student scholarships on Aug. 19, 2011. Left to Right: Paul Elmore, Central Penn mascot Sir Will, Stan Elmore, G. Thomas Waite and Central Penn Career Services Director Steve Hassinger.



Left to right: Education Foundation Director Matt Lane, pictured with Dermody Properties Foundation representative Renee Weber and Financial Aid Director Kathy Shepard, in celebration and recognition of Dermody Properties Foundation's 2011 scholarship support.

Endowed Scholarship Funds

Endowed scholarships are awarded to students each year, in perpetuity. These funds are established at the \$10,000 level and higher.

Abayasekara Family Scholarship*
Anonymous Scholarships (2)
Bailey Family Foundation Scholarship
Park and Mary Barner Memorial Scholarship*
Boles, Metzger, Brosius & Emrick, P.C. Scholarship
Byler Family Scholarship
Lee Cave Memorial Scholarship
Conrad Siegel Actuaries Scholarship
Continuing Education Scholarship
Manuel Del Valle Scholarship
Edwin and Carol Engerer Scholarship
J. Martin Engle '29 Scholarship
Ruth Evinger '40 Scholarship
Thomas and Theresa Fraticelli Scholarship
William and Karen Gladstone Scholarship
Duane and Susan Greenly Scholarship*
Derek Hathaway Leadership in Business Scholarship

James and Tamara Hepfer Scholarship
Holtzman Family Scholarship
Lawrence and Julia Hoverter Foundation Scholarship
Charles T. Jones Leadership Library Scholarship
Jack F. Keiser Scholarship
Daryl and Dennis Kenes Scholarship
Russell and Stella Kulp Scholarship
Bart and Jean Milano Scholarship
Craig C. Parker Scholarship
Peter and Mary '77 Phillips Scholarship
Rhea (Paul) Reese '40 Scholarship
Donald B. and Dorothy L. Stabler Foundation Scholarship
Dimitri Stadnyk Scholarship
Harold Stahle '44 Scholarship
Tremendous Living Foundation Scholarship
Wingert Family Scholarship
Women in Leadership Scholarship
Bob Wright Memorial Scholarship
Glenn and Marsha Zehner Scholarship

*New in 2011

Board of Trustees

The Central Penn College Education Foundation Board of Trustees is strongly committed to supporting worthy Central Penn students with needed scholarships. The trustees lead the education foundation through their expertise, knowledge of the community and their belief in the power of philanthropy.

William B. Boles, chairman	Karen Gladstone
Jennifer Buehler '91, vice chair and chair-elect	Phyllis Hicks
Karen Holtzman, secretary	Michelle (Walter) Meiser '93, president, alumni association
Timothy Engle, treasurer	Janis Peck, vice chair-elect
Dr. Dilip Abayasekara	Merrick Shook
Justin Coleman '06	Curtis Voelker '12
Jennifer Delaye	

Mission Statement

Central Penn College Education Foundation provides scholarships to Central Penn College students who exhibit strong attributes for career success despite financial challenges.

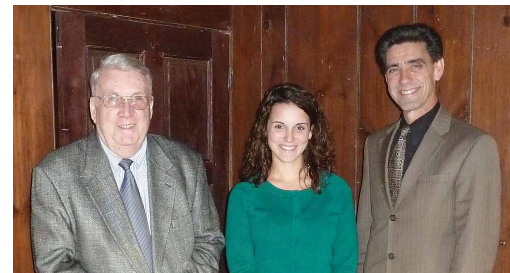
In Memoriam

The education foundation lost three highly-regarded supporters in 2011. Their generous contributions continue to benefit student scholarships through the foundation's endowment.

Edward R. Norford of Camp Hill, Pa., died on August 26, 2011. He was founder and president of Miller and Norford General Contractors, the construction company that built and redesigned several key buildings on Central Penn College's Summerdale campus.

Christine Myers Crist of Camp Hill, Pa., died on August 16, 2011. Crist supported many local organizations and was a strong believer in higher education.

Judith Byler of Lancaster, Pa., died on November 22, 2011. She and her husband, John, were early supporters of the education foundation. They generously established an endowed scholarship in the family's name.



Edward Norford (left) pictured with education foundation scholarship recipient Laura Longenecker and President Todd A. Milano in December 2010.

To learn more about the Central Penn College Education Foundation or to make a gift for student scholarships, please contact Matt Lane at 717-728-2263/ mattlane@centralpenn.edu or Sandra Box at 717-728-2507/ sandrabox@centralpenn.edu.

Central Penn College Education Foundation
600 Valley Road
P.O. Box 309
Summerdale, PA 17093-0309
www.centralpenn.edu/foundation

You Can: Attend Alumni Association Meetings

By LaTanya Gilbert, *Student Reporter*

The Central Penn College Alumni Association's most recent quarterly meeting connected 13 association members at the Summerdale campus and Lancaster Center through the use of video conferencing technology. Members discussed the following upcoming events, which you are encouraged to attend!

The 2012 annual day of camaraderie and fun at Knoebels Amusement Resort will be held on September 15. Lunch will be served at 1 p.m. Two baseball game gatherings, dates to be determined, are being planned for the warmer seasons, including a Lancaster Barnstormers game in the spring and a Harrisburg Senators game in late summer. Stay tuned to Central Penn's news, events and community webpage at

centralpenn.edu for official dates.

Upcoming alumni association meetings are taking place on April 18 and June 13, starting at 5:30 p.m. You can choose to attend the meetings at the Summerdale campus in the ATEC building, room 218 (inside the academic affairs suite) or the Lancaster Center in room 126. The meetings will be connected by video conference.

Anyone wishing to learn more about the alumni association is invited. Come join them, share ideas and help to promote awareness of the association. For more information, contact Alumni Association Secretary **Kimberly (Bindl) Dietrich '08** at Kimberly.Dietrich@gmail.com.

2 EXCITING OFFERS from the Central Penn Wellness Committee

Momentum Female Fitness & Nutrition

Mechanicsburg, Pa., www.momentumfit.com

Take a step toward a healthier you! A new partnership was created between Central Penn College and Momentum Female Fitness & Nutrition with benefits that extend to alumni. Through April 30, Momentum will honor a 25 percent discount off its regular monthly rate, bringing the monthly cost to \$33 a month based on a year's contract. The enrollment fee, typically \$125, will be waived. To get started, stop by Momentum and bring this copy of *PennDulum* as your form of Central Penn identification.

Universal Athletic Club

Lancaster, Pa., www.universalathleticclub.com

Universal Athletic Club is partnering with Central Penn College to meet the health and wellness needs of Lancaster-area alumni. You can experience the club first-hand by using this edition of *PennDulum* as a one-week guest pass. Join before April 30, and save \$50 off the enrollment fee and earn a \$100 Universal card. Businesses where Central Penn alumni work can receive the lowest corporate rate* or save 15 percent off Universal's eight-week "Try Us" membership.

To activate your guest pass and for a tour, contact Pat Mortensen at patm@universalathleticclub.com or 717-569-5396.

*valid on 12-month memberships only



See page 29 for more Exciting Alumni Offers!

Ethical Leadership and its impact on Central Penn

by Patrick Hughes
Professor of Criminal Justice

In today's media landscape, filled with stories about dishonesty, corruption and poor decision-making, a looming question that continues to be posed by many people is, "Where is ethical leadership?" From my standpoint, the failures that we see in leadership should also prompt us to go one step further and ask ourselves, "How do you foster ethical leadership?" This question served as the starting point for the Craiger C. Parker Leadership Development program at Central Penn College.

The leadership development program is designed around the college's five core values. It seeks to increase a student's professionalism through a structured curriculum, which is centered on educational focus, the importance of respect and integrity, and service to the community.

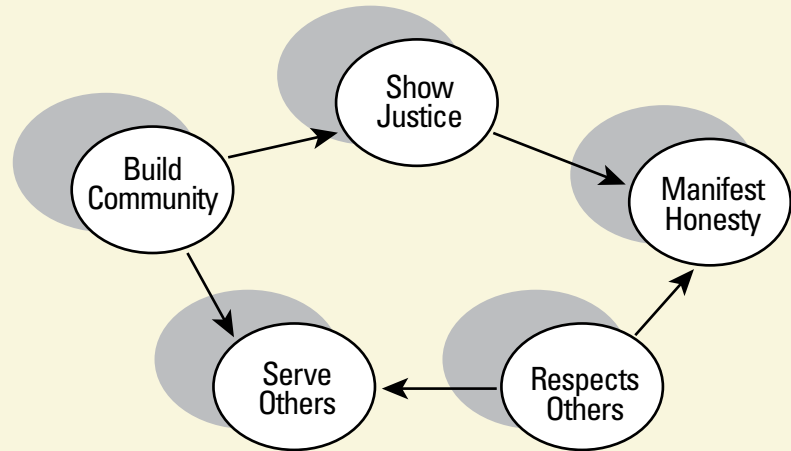
These focus areas also very nicely mirror a leadership approach that author Peter Northouse calls the 'Ethical Leadership Principle Model.' (See figure to right).

In keeping in sync with this model, the college and the leadership development program strive to incorporate these concepts into the students' experience, both socially and academically. Socially, students are required to perform community service and adhere to the student code of conduct in respecting others. The program provides opportunities through club activities for students to foster building the student community. Many students in the program are involved in the college's student government association and

judiciary board. Academically, students take courses on topics such as ethics, leadership theory, social responsibility and organizational change. To finish the program, students create a research project in which they are evaluated on behavioral and academic portions. Students must exhibit ethical leadership behavior while performing their project, as well as apply the classroom theory and knowledge to their written report. To date, there are three students who have created and are in the process of completing their final research projects.

Since its inception in July 2010, 23 students have made application to the program and 12 have been accepted and are actively participating. It is important to note that students who participate do it voluntarily and complete the program requirements above and beyond their normal degree requirements. It is exciting to see the enrollment numbers grow, giving hope the creation of future ethical leaders. Through college-wide support for the program, we will continue to educate and truly

instill a sense of ethical leadership into Central Penn students and their college community.



Patrick Hughes is a doctoral candidate of leadership at Alvernia University in Reading, Pa. He also holds a M.S. in organizational development and leadership from Shippensburg University, and a B.S. in psychology from Kutztown University. He is an associate professor and the program champion of the criminal justice administration program and serves as the leadership development program coordinator at Central Penn College. Prior to teaching, he was a police officer for several years and remains a police academy instructor. Hughes has had his research published in various journals such as, "Leadership and Organizational Management Journal," "FBI Bulletin Journal," "Ethics and Critical Thinking Journal," and "Advancing Women in Leadership Journal." His areas of interest in research are organizational development, leadership, organizational change and ethics as applied to the public sector.



College Corner, provides you with expert insights from Central Penn faculty and staff members.

Travel Abroad
Students Excited About

CROATIA



Professor Howard Davison and his wife, Mary, planned and escorted 14 fresh-faced and eager Central Penn students on the college's third cultural immersion trip to Croatia. The group traveled from September 28 to November 15, 2011. Many of the same sites and experiences were explored as in the past; however, Professor Davison added three new twists to the trip.

One was a five-day boat trip on the Adriatic Sea that took the group to four different islands. The students were skeptical that they could fit in the boat, along with a captain, cook and first mate. "Cramped" may have been the students' first thought upon seeing the living space, but after days of beautiful weather and intriguing sites, "exhilarating" better described the trip upon returning to port.

Second, the students attended an exchange presentation at the stately University of Zadar in Croatia. Three professors from the University of Zadar gave a presentation on Croatian history, while a graduate student described the history of the university, which was founded in 1396. Central Penn students Curtis Voelker and Christopher Cawley then

delivered a presentation on Central Penn College. When Voelker and Cawley remarked about the number of successful Central Penn graduates "employed in their chosen field" or continuing their education, the Zadar professors were amazed. Because of the lack of opportunities in Croatia, it is common for graduates of their university to wait 10 to 15 years to work in their field.

The third and perhaps most inspiring addition to this year's trip to Croatia was the optional side-trip to Sarajevo, the capital city of Bosnia. After a four-hour tour of the lingering results and rebuilding efforts of the city as a result of the Serbian siege during the 1992-1995 Bosnian war for independence, the students left, somber and reflective, regarding the suffering of Bosnians. In addition, after visiting sites such as the Tunnel of Hope, which ran under the Sarajevo airport bringing supplies to a bombed and isolated city, the students were saddened but grateful to learn this history.

The students earned more than college credits for their travel and assignments; they gained independence, a unique learning experience and awe regarding different societies.

Corporate and community outreach program – a blend of benefits and in-person contact

In the past few months, Central Penn has revamped how it collaborates with its local communities, resulting in a new corporate and community outreach program. The program continues to partner with local employers to help keep companies and employees on the path to success. In addition to offering benefits to employers, including employee motivation and retention and career services resources, the program give employees an opportunity to improve upon their professional skills. Transfer equivalencies allow students to earn credit for company training

programs and work-life experience, and employees of corporate partners earn a \$250 new start grant toward their first term for tuition, fees or books.

For Central Penn's 2011 featured corporate partner, Penn National, a personalized webpage was created (www.centralpenn.edu/pennnational) with custom groupings of courses to meet employee training needs.

Corporate and Community Outreach Coordinator Beth Romanski now leads the program. Romanski meets with employers and determines an organization's individual needs that coincide with the college's

brand promise. She conducts "table visits" with corporate and community partners, attends education fairs, and has been involved in college networking events and community events, such as the East Pennsboro Pumpkin Fest.

Please help Central Penn spread the word to corporate or community organizations you know by sharing Romanski's information with them or asking them to contact her.

Beth Romanski, 717-728-2490,
bethromanski@centralpenn.edu

Who Says Nobody Is Hiring?

Central Penn College's career services office continues to provide alumni and students with opportunities to network with employers. In combination with many other networking and job fair events, career services has sponsored yet another successful event, the Fall Career Expo, to help students with employment and internships.

This event was held on October 27, 2011 and provided alumni, students, faculty and staff the chance to search for

various employment opportunities and make professional contacts with people in their chosen field. Students had the opportunity to network with potential employers about jobs or internships relating to their major, or about potential employment in the future. At this event, more than 40 companies joined us to make our vision a reality. In addition, approximately nine alumni, 185 students and guests, and 18 faculty and staff members participated.

Career services never stops providing for alumni and students. Alumni are invited to attend any and all events sponsored by career services. We aim to be a better service to those who have earned a Central Penn degree. For information on upcoming events, please check out this *PennDulum* issue's calendar page or feel free to contact career services at 717-728-2262 or stevehassinger@centralpenn.edu. We look forward to hearing from you!

Online apparel store stocked with spirit wear

Looking for Central Penn clothing with the new logo? Just check out the new online apparel store from the College website. The online store includes spirit wear in the form of sweat pants, sweatshirts, hooded sweatshirts, shorts, t-shirts, polo shirts, ball caps, backpacks, and blankets. There are also t-shirts and caps for sale for alumni. So stock up now on your favorite items and wear the Central Penn logo proudly!

centralpenn.edu/store





Gary Zimmerman '82, computer information systems, received a brief tour of campus, followed by lunch in the Boyer House with President Todd A. Milano, Professor Harve Tannenbaum, Information Technology Director Steven Birmingham and student Curtis Voelker on Aug. 16, 2011. *Left to right: Voelker, Zimmerman, Birmingham, Tannenbaum, Milano.*



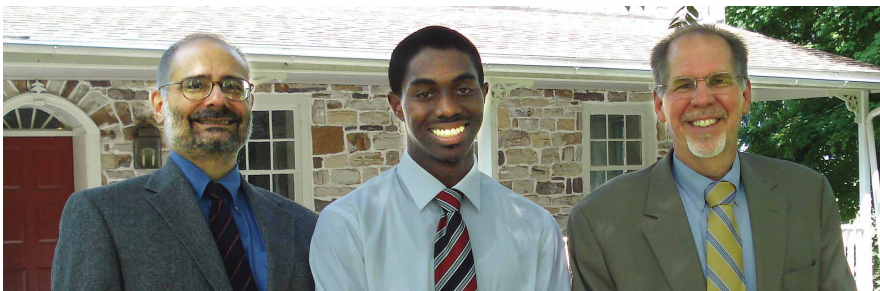
The physical therapist assistant and medical assisting students participated in a pinning ceremony in The Conference Center on Nov. 3, 2011. More than 40 students and their families were present, as well as President Todd A. Milano and faculty.



Central Penn's 2011 Fall Harvest King, Mike Janouris, and Queen, Amanda Wood, earned their titles by raising the most money for charities of their choice. Janouris raised \$528 for St. Jude Children's Research Hospital and Wood raised \$2,053 toward the Leukemia and Lymphoma Society.



The Central Penn Knights basketball team of 2011-2012. The Knights were featured in two in-depth articles on the program's growth in *The Patriot-News* in January. Central Penn now competes at the national level in the United States Collegiate Athletic Association (USCAA) conference and was the No. 1 seed in the 2012 USCAA DII national championship games. The college's Lady Knights basketball team also experienced a successful 2011-2012 season.



Jeff Goble, former FBI agent and current security consultant, enjoyed a brief tour of campus on Aug. 9, 2011 and lunch in the Boyer House with President Todd A. Milano, Professor John DeLeo and student Marcel Philmore. *Left to right: DeLeo, Philmore, Goble.*



Jim and Naomi Rhode stopped back on campus and then enjoyed dinner with President Todd A. Milano and Linda (Meiller) Milano '78.



On Friday, Oct. 21, 2011, a central Pennsylvania family was featured on the ABC show “Extreme Makeover: Home Edition.” Through the power of community and the generosity of the Extreme Makeover team, Brian Keefer—a quadriplegic whose father quit his job to take care of him and his family received a new home. Prior to the show’s airing, Keefer came to the Summerdale campus to share with students the different challenges he faces every day and how he overcomes them.



John Hickey, president, Sutliff Chevrolet, enjoyed a tour of campus, followed by lunch in the Boyer House with President Todd A. Milano, Assistant Dean of General Education/ Outcomes Assessment Specialist Maria Querry, Career Services Associate Mike Thompson and student Christina Rivera on Aug. 23, 2011. *Left to right: Hickey, Rivera.*



Dick and Carolyn Dumaresq, recently appointed Deputy Secretary of Education Jill Hans, President Todd A. Milano, Vice President & CAO Dr. Melissa Vayda, Foundation Director Matt Lane and student Carly Howard, had lunch on the third floor of ATEC, overlooking historic Henszey’s Bridge on Aug. 25, 2011. *Left to right: Lane, Mr. and Mrs. Dumaresq, Howard, Hans, Vayda, Milano.*



Glenn W. Zehner, EdD, received a special Central Penn College chair as token of appreciation for serving as Chairman of the Central Penn College Board of Directors from 2008 to 2010. *Left to right: President Todd A. Milano, Dr. Zehner, current Board Chairman William Kobel ’81.*



Dennis Owens, WHTM-27 anchor, was on campus July 28, 2011. He toured campus and had lunch in the Boyer House with students Curtis Voelker, Nick Spera and LaTanya Gilbert, the college’s Public Relations and Communications Specialist Sarah Douglass and President Todd A. Milano. *Left to right: Milano, Douglass, Gilbert, Owens, Spera, Voelker.*

Alumni, please keep us informed

We don't want you to miss a single issue of your alumni publication, so be sure to let us know if you marry, move or change jobs. Your success is important to us so keep us informed of career changes and promotions by visiting centralpenn.edu/letusknow. And if you know someone who attended Central Penn, but is not receiving *PennDulum*, encourage them to contact us or stop by and visit. Alumni are always welcome!

1940s

Paul A. Miller '40, was recognized by the United Airlines Northeast Flight Office on June 30, 2011 with a medal and special lunch for Miller's 33 years of service as a captain. Miller resides in Mechanicsburg, Pa.



1970s

Sonia (Rivera) Watchman '74, legal secretary, was recently recognized as a "Harrisburg Hero" by her employer, National Government Services. Watchman is a member of the organization's customer care staff—where she has been "a valuable asset throughout her many years" with the Harrisburg office.

Ann (DeFebo) Bieber '77, legal assistant, is vice president of administrative services and workforce/ community development at Lehigh Carbon Community College.

She recently earned her EdD from Capella University. Bieber resides in Allentown, Pa., and is married with two children; her daughter is a medical doctor and her son works in the finance industry.

Rebecca (Moser) Guillaume '77, legal secretary, is deputy treasurer for Bradford County. Guillaume has worked for Bradford County for 21 years, 11 of them as deputy treasurer. She resides in Canton, Pa.

1980s

Tracey Walker '84, medical assisting, is a sales representative/ agent for The Hartford. In addition, she recently completed the Pennsylvania Producer's Accident/ Health Insurance license exam on July 19, 2011. She resides in New Tripoli, Pa.

Karen (Harper) Gallagher '89, physical therapist assistant, is a rehab supervisor for Grand View Hospital. She resides in Coopersburg, Pa.

1990s

Lisa Brooks, '91, hotel and restaurant management, married Doug Ott on May 28, 2011. She is an account executive for American Greetings and resides in Parma Heights, Oh.

Jennifer Buehler '91, legal studies, has been elected chair of the Central Penn College Education Foundation Board of Trustees. In addition, Buehler was recently recognized by the West Shore Chamber of Commerce as the recipient of its annual George C. Hoopy



Jennifer Buehler '91

Award. She received this honor for her commitment to the organization through committee activity, leadership and promotion of the Chamber. She resides in Mechanicsburg, Pa., with her husband and two children.

David Tull '92, accounting, is director of operations for Susquehanna Valley Harley-Davidson. He resides in Lebanon, Pa.

Paula (Bridge) Mack '94, medical assisting, is a medical transcriptionist for Superior Global Solutions. "Having medical assisting experience (16 years) really helped me get through the medical transcriptionist course with ease," says Mack. She resides in Vintondale, Pa.



Paula (Bridge) Mack '94

Teresa (Swoyer) Miller '95, child care management, is an accounting assistant for Womex. She resides in Dillsburg, Pa.

Michelle (Ney) Brown '97, office administration, is a majority staff administrator for the Pennsylvania Senate. She resides in Pine Grove, Pa.



Pictured top row (left to right) is Kelly (Scheithauer) Vargason, retail management, Sheila (Lubold) Carl, legal assisting. Bottom row (left to right) is Megan (Reinard) Moll, Chyenna (Robbins) Gowdy, legal assisting, and Rebecca (Myers) Plesic, legal assisting, all members of the class of '97

JANET WILLIAMS QUIGLEY

'80, legal secretarial, is director of advancement and alumni relations for Trinity High School in Camp Hill, Pa. Quigley believes that Catholic education plays a valuable role in the community and is happy to promote the high-performing school. Quigley keeps alumni

informed and involved. In addition, she solicits contributions from many factions of Trinity supporters.

The road to this position starts with Central Penn College. Quigley says, "In my senior year at Hazleton High School, a Central



Penn representative attended a college fair at my school. I was intrigued and visited the Summerdale campus with two other classmates. We all liked what we saw and enrolled. The independence was great, and living in Gale Hall across from the swimming pool made summer classes fun."

After returning to Hazleton upon graduation, Quigley worked for two law firms and then moved to the area of economic development as associate to the president of CAN-DO, Inc., a community non-profit serving Greater Hazleton. After taking time off for child-rearing, Quigley began her career in Catholic education by working for an elementary school in her hometown, a school that her son Brian attended.

In 2003, Quigley was happy to return to the Harrisburg area. Shortly after her move, she was offered a position within Trinity's advancement office and was promoted to her current position in 2008.

Quigley states with certainty, "It all started with Central Penn. I was very pleased with the college and the opportunities my education provided."

Her son, now a freshman at Mount St. Mary's University in Emmitsburg, Md., is making his own mark in college with a 4.0 GPA in his first semester. His proud mother resides in Camp Hill, Pa.

CLASS Notes

Megan (Reinard) Moll '97, legal assisting, writes: "Fab-5 Girls Weekend! We recently got together for a 'Girls Weekend' in the Gettysburg area. A fun time of shopping, dinner, drinks, movies and midnight tour of The Jennie Wade House. We are truly blessed to have remained such great friends over the years and look forward to many more get-togethers."

Tammy (Richard) Walter '97, accounting, is an accountant for Professional Building Systems and currently is pursuing her BS in accounting from Central Penn College. She resides in Mount Pleasant Mills, Pa.

Christian (Bednar) LaRue '98, accounting, is a staff accountant for the Pennsylvania Bar Institute. She resides in Wellsville, Pa.

Bobbi Jo (Shartzler) Wolfley '98, physical therapist assistant, is a PTA for Guardian Rehab. She resides in McClure, Pa.

Elaine (Brewer) Sunho '99, physical therapist assistant, is a PTA for Good Samaritan Health Systems. She resides in Lebanon, Pa.

2000s

Eric Kazda '00, multimedia/ internet production, is the sole owner of Quantum Dynamix, a highly-awarded interactive marketing company. Most recently, Quantum Dynamix was honored with five Capital Awards from the Harrisburg Chapter of the International Association of Business Communicators (IABC) for excellence in print and audiovisual media at its November 9, 2011 gala event. Kazda resides in Landisville, Pa.

Jennifer (Porter) Sutton '00, office administration, is a regional nurse recruiter for Loving Care Agency/ Links2care. She resides in Bressler, Pa.

Joann (Deitrick) Clark '02, management, '97 legal assistant, is a contract specialist for the Department of Navy in Mechanicsburg, Pa.

Chad Rooney '03, BS in criminal justice administration, is a treatment supervisor for the Geo Group.

Thaddeus Austin '04, BS in business administration, is supervisor, transportation for Milton Hershey School. He resides in Palmyra, Pa.

Nichole (Perzel) Leibensberger '04, BS in business administration – management, is the owner of Chase Insurance Associates. She resides in Mohrsville, Pa.

Amy (Dietz) Rich '04, marketing, is a contract specialist for NAVSUP Weapon Systems Support. She resides in Harrisburg, Pa.

Amber (Michael) Anderson '05, paralegal, is a paralegal for Metzger Wickersham. She resides in Harrisburg, Pa.

Brooke (Binger) Haas '05, paralegal, married Dustin Michael Haas on June 4, 2011. She is a deputy clerk in the Prothonotary's office of the Cumberland County Courthouse.

Holly (Newell) Rubinic '06, BS in criminal justice administration, is a loss prevention representative for Belco Community Credit Union. Rubinic was married in October 2010 and is expecting a new addition to the family in May. She resides in Harrisburg, Pa.

Elizabeth (Skelly) Sawyer '06, BS in business administration – marketing, is a replenishment analyst for Ahold USA. She married Sean Sawyer in May 2008 and has a one-year-old daughter, Grace. The family resides in New Bloomfield, Pa.

MaryAnne Elliott '06, medical assisting, '06, medical secretarial, married Kevin Moritz on April 16, 2011. The couple resides in Orrtanna, Pa.

Valerie Gross '06, physical therapist assistant is engaged to Daniel Lenox '06, physical therapist assistant. She is a PTA at Spring Creek Physical Therapy. He is a PTA for Orthopedic Institute of Pennsylvania.

Kate (Konyk) Wilt '06, BS in criminal justice administration, is a member of the 134th class of the Pennsylvania State Police Academy.

Holly Sheesley '07, BS in business administration – management, is a physician sourcing specialist/ recruiter for Pocono Medical Center. She resides in Stradsburg, Pa.

Noelle Augustine '08, BS in criminal justice administration is nearing completion of her MS in social work from Temple University. She is an adult behavioral health supervisor for NHS Human Services and resides in Pottsville, Pa.



Kimberly (Bindl) Dietrich '08

Kimberly (Bindl) Dietrich '08, BS in business administration – marketing, is M&T@Work specialist for M&T Bank. She also serves as vice president, board of directors for the Partnership for Career Development and resides in Mechanicsburg, Pa.

Antoine Fennell Sr. '08, BS in business administration, is a finance sales consultant II for PNC Bank of Ewing, NJ.

Timothy Kuhn '09, BS in corporate communications, is a technology educator at Hershey Medical Center. Kuhn is a member of the American



Timothy Kuhn '09

Legion, the Jaycees and the Loyal Order of the Moose. He resides with his wife and two daughters in McAlisterville, Pa.

Becca McCurdy '09, physical therapist assistant, is a PTA for the Hershey Drayer Clinic.

Jaret Wilson '09, BS in business administration – marketing, is director of marketing and web design for Love Arts Design Studio. He currently resides in Philadelphia, Pa.

2010s

Bill Bossert '10, BS in business administration – marketing, was recently promoted to an Inventory Merchandise Manager for Wawa. He resides in Cape May, NJ.

Edita Jurisic '10, BS in accounting, is a staff accountant with a social media company in mid-town Manhattan.

Nicole Katsaounis '10, BS in criminal justice administration, has almost completed her MS in Educational Psychology from Temple University. She is applying to Drexel University to begin her PhD work in fall 2012.



Nicole Katsaounis '10

Alyssa Klinger '10, BS in business administration – marketing, is a marketer for Top Guns Inc. She resides in Klingerstown, Pa.

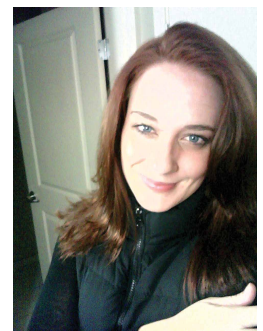
Beth Ann Kottcamp '10, paralegal, married **Don Bell, Jr. '10**, BS in business administration on May 7, 2011. The couple resides in Dillsburg, Pa.

ALICIA STANSBURY '99,

communications, is making things happen in New York City as senior trainer at msnbc.com, the broadcast media giant. Stansbury was selected from more than 600 applicants in August 2011 and has not looked back. The position keeps her very busy as she develops and delivers technology and management training for employees in the company's East coast locations of Washington, D.C. and the famous 30 Rockefeller Plaza building in New York City.

New York City is a long way from Lincoln, Neb., where Stansbury lived and worked prior to moving to the city. She honed her training skills at Nelnet/Firstmark Services before moving to msnbc.com.

Stansbury explains, "I always knew I wanted to move back to the East coast to be closer to my family, but I never imagined I would be living in New York and working at 30 Rock. The city has such an electricity and drive. The energy just makes you want to push harder, professionally and personally. I am in the greatest city in the world, surrounded by such talent ... it is truly an awesome feeling and I am very blessed to be where I am today. Thank you, Central Penn, for helping me to find my voice."



Stansbury built her impressive resume through a combination of strategic work experiences and education. After graduating from Central Penn, she earned her bachelor's degree in communications from Alvernia College in Reading, Pa., and master's degree in instructional design from Bellevue University in Bellevue, Neb.

Stansbury resides in Manhattan, N.Y.

NICOLE (BENSON) LEWIS '07, criminal justice, pursued her passions for science and investigation by enrolling in the master's degree program in forensic medicine at Philadelphia College of Osteopathic Medicine, graduating in 2010. Lewis took her expertise to the classroom at two institutions of higher

education and, fortunately for Central Penn, one of them is her alma mater in Summerdale, Pa. She teaches a variety of courses, including biology, criminalistics, psychology of the criminal, and sociology at Central Penn and anatomy and physiology at Luzerne County Community College.

Lewis explains, "My long-term goal is to teach full time for Central Penn College. My experiences as a student at Central Penn made me who I am today. I hope to bring the same excitement for science and forensics to my students. The one-and-a-half hour commute is not easy but I love the job. Hopefully opportunities to teach at Central Penn locations closer to home will open up."

Lewis married high school sweetheart Ryan Lewis, an information technology programmer, on October 15, 2011. The newlyweds live in Plains, Pa. with Tamale, their tea-cup Chihuahua.



Professor Nicole Lewis' Central Penn roommates helped celebrate her 2011 wedding. Pictured from left to right, bottom to top are Beverly (Baird) Esh '06, Nicole Lewis '07, Shannon Reed '06, Megan Doherty '06 and Jennifer Parker '07.

CLASS Notes

Jessica Onisick '10, physical therapist assistant, married Jeffrey Navitsky on June 25, 2011. She is employed by the Trinity Mission of Shenandoah Heights.

Raymond Suda '10, BS in criminal justice, is a police officer at both Ashley Borough and Fairview Township of northeast Pa.

Jessica Weber '10, BS in business administration, is assistant manager at Wendy's (Valenti Management). She resides in Etters, Pa.

Stephanie Bowler '11, physical therapist assistant is employed by Messiah Village as a PTA.

Matthew Feidt '11, BS in homeland security management, is transportation security officer with TSA.

Matthew Lafferty '11, BS in information technology, is an intrusion detection analyst for Secure Mission Solutions, supporting U.S. Department of Defense's Defense Research and Engineering Network. He currently is pursuing a MS in information assurance from Capitol College and resides in Silver Spring, Md.

Laura Manzella '11, BS in accounting, '10, BS in business administration – management, is a staff accountant for Foot Locker.

Kyle Szives '11, BS in information technology, was hired by Gibraltar Technologies as a member of its web development team.

Share your real- world expertise...

Be a Central Penn alumni mentor

Do you want to explain to Central Penn students what it is really like to work in your field? Do you have openings within your workplace for interns, or dare we hope, job opportunities for graduates? Would you like to represent Central Penn College at events in your area?

Opportunities like these, to help the future careers of Central Penn students, are available through the college's alumni mentor program. Jointly run by career services and the education foundation, Central Penn's alumni mentor program has been a vital program for years, but hopes to add you to the list of successful alumni who participate.

Please share your Central Penn pride and career experience by getting involved in any of the following activities:

- Be a guest speaker in a classroom
- Invite a student to intern at your workplace
- Invite a student to shadow (Spend a day or portion of a day at your place of employment.)
- Tutor a student who needs academic assistance
- Correspond with students and prospective students about your Central Penn experience

Sandra Box, associate director of the education foundation and coordinator of the alumni mentor program, welcomes your call or email. Box can be easily reached at sandrabox@centralpenn.edu or 717-728-2507. Please add Central Penn's alumni mentor program to your community service list!

Shoemaker's CUSTOM FRAMING

Would you like to have your Central Penn
College diploma framed and help the
Education Foundation at the same time?

Your diploma will be framed in an 11" x 14" glossy cherry frame with gold accent lines, on an ivory outer mat with burgundy inner mat. Original price is \$75 plus tax, but with this discount, the price is \$50 plus tax.

**WITH 10 PERCENT
DONATED TO THE
CENTRAL PENN
COLLEGE EDUCATION
FOUNDATION.**

If interested, mail your diploma, along with a check for \$53, made payable to Shoemaker's Custom Framing to 6261 South Highlands Circle, Harrisburg, PA 17111 or call 717-580-5783. Turn-around time is 2 weeks.

WENDI (PERRIN) WITHEROW '85

By Steve Blair '74, management

While attending Huntingdon Area High School, Wendi (Perrin) Witherow took an interest in court reporting. "There were only two schools nearby: one, Hagerstown Business School in Maryland, the other, Central Penn," says Witherow. "I believed that the campus location and facilities at Central Penn were much nicer than those at Hagerstown Business School and I preferred to stay in Pennsylvania," she adds.

Witherow has had a successful career in the legal and education fields: three years as secretary for The Honorable Stewart L. Kurtz, who is currently the judge presiding in Huntingdon County; six years as a secretary of the Harrisburg law firm, Pepper, Hamilton & Scheetz; six years as secretary to the school board at East Pennsboro Area School District; and most recently, two years as secretary in the legal offices of the Pennsylvania State System of Higher Education.

"I found that the required courses at Central Penn were thorough, well taught, and pertinent to the field in which I work," says Witherow. "The training I received provided a strong foundation. After taking time off to stay at home with my children when they were young, I had no difficulty finding a position when I re-entered the workforce," she adds.

Having worked in the legal field for 15 years, Witherow believes a legal profession would be an excellent choice for someone who is interested in a career where work is varied, challenging and interesting. "No two cases are the same and you are always learning something new," she says.

Witherow currently works part time as a staff associate in the legal division of the Pennsylvania State Education Association and stays busy raising three "awesome teenagers" with the help of her husband.



The Witherow family pictured at Stone Harbor, NJ. *Left to right:* Son Seth, husband John, daughters Alayna and Cari, and Wendi Witherow '85.



Liberty Mutual is a proud partner of
Central Penn Alumni Association

For additional information about Liberty Mutual and our car
and home insurance, please contact us at 717-975-8150 x7193 or
visit us at libertymutual.com/centralpenn.

Responsibility. What's your policy?



Coverage provided and underwritten by Liberty Mutual Insurance Company and its affiliates, 175 Berkeley Street, Boston, MA. In Texas only, coverage provided and underwritten by Liberty County Mutual Insurance Company and its affiliates, 2100 Walnut Hill Lane, Irving, TX. © 2009 Liberty Mutual Insurance Company. All rights reserved.

Central Penn Alumni Association Meeting

Central Penn College – Summerdale Campus/ Central Penn College
Lancaster Center
Wednesday, April 18 • 5:30 p.m.

Business Partner of the Year Breakfast and Town Hall Meeting

Wednesday, May 16

Central Penn Alumni Association

Special event – Lancaster Barnstormers
Spring 2012

Networking Reception

Lancaster Lebanon Intermediate Unit
Monday, June 4

Central Penn Alumni Association Meeting

Central Penn College – Summerdale Campus/ Central Penn College
Lancaster Center
Wednesday, June 13 • 5:30 p.m.

Part-time Job Fair

Central Penn College Conference Center
Thursday, July 19 • 9:30 a.m. to 12:30 p.m.

Central Penn Alumni Association

Special event – Harrisburg Senators
Summer 2012

41st Annual Central Penn Golf Outing

Armitage Golf Club, Camp Hill, Pa.
Friday, August 17 • 9 a.m. start time

Networking Reception

Central Penn College Conference Center
Thursday, September 6 • 11 a.m. to 1 p.m.

Alumni Reunion

Knoebels Family Amusement Resort, Elysburg, Pa.
Saturday, September 15 • 1 p.m. lunch

Fall Harvest

Central Penn College
Saturday, October 20

Fall Career Expo

Central Penn College
Thursday, October 25 • 9:30 a.m. – 12:30 p.m.

To learn more about any of these events, visit centralpenn.edu/events.

Create Opportunities for Tomorrow's Students.



Remember Central Penn in your will today.

By including the Central Penn College Education Foundation in your estate plan, you can invest in the future of the college and its students. There are a variety of scholarship funds to choose from—and you can designate your scholarship to be awarded in a way that is most meaningful to you. Contact us to learn more.

Central Penn College Education Foundation
P.O. Box 309, 600 Valley Road
Summerdale, Pa. 17093-0309
1-800-759-2727 • 717-728-2263
centralpenn.edu/foundation
foundation@centralpenn.edu

Sara "Sally" Boynton died Tuesday, January 3, 2012 at the age of 98.

Garnet S. Graham died Fri., January 27, 2012 at the age of 94.

Thelma Griffie died Wed., May 11, 2011 at the age of 79.

Ray A. Landis died Tuesday, September 6, 2011 at the age of 93.

Margaret Huber Norris died Wednesday, September 14, 2011 at the age of 92.

Doris Mae (Crist) Plasic died Tuesday, December 27, 2011 at the age of 82.

Truman E. Schreffler died Sunday, September 25, 2011 at the age of 82.

Winifred L. Walters died Wednesday, August 3, 2011 at the age of 92.

Janet (Adams) Weston died Thursday, January 19, 2012 at the age of 65.

Roland Raymond Beaver '61 died Tuesday, July 26, 2011 at the age of 71.

Ruth D. Weigel '41 died Saturday, July 30, 2011 at the age of 89.



Let us know!

We want to know about any changes or other exciting news that you would like to share with classmates. Include a business card and/or recent photo to give it that special touch. For quality reproduction, all photos must be originals and unmarked. You can also share updates and upload photos online by visiting centralpenn.edu/letusknow.

Name: _____ (Maiden) _____

Phone: _____

Address: _____

City: _____ State: _____ Zip: _____

E-mail Address: _____

Graduation Year: _____ Major: _____

Employer: _____

Title: _____

Your news/special memories: _____

May we print your e-mail address with your comments? Yes No

May we use your comments on other publications for the College? Yes No

Would you be interested in more information on: Alumni Association Alumni Mentor Program Reunions (Attending Planning)
 Planned Giving

We use several sources to gather information for Class Notes. If you prefer not to have information about you appear in *PennDulum*, please let us know by checking this box.

IMPORTANT NOTICE FOR ALUMNI WISHING TO CHANGE THEIR NAME

Alumni (and students) who want to officially change their name in the college database must submit a request form along with a notarized copy of a Social Security card reflecting the new name. The form can be found on the college website at centralpenn.edu under the Alumni heading.

Please mail your name change request form and notarized copy of Social Security card to:

Registrar
Central Penn College
600 Valley Road
P.O. Box 309
Summerdale, PA 17093-0309

Central Penn College
Education Foundation
600 Valley Road
P.O. Box 309
Summerdale, PA 17093-0309

NON PROFIT ORG
U.S. Postage
PAID
Harrisburg, PA
Permit No. 668

ADDRESS SERVICE REQUESTED

vision statement

OUR VISION for Central Penn College is a diverse student population, benefiting from caring faculty and staff, credentialed practitioners who delight in teaching. Collectively, we work to create the bridge that connects students to their professional goals through a rich assortment of career-centered programs by embracing hands-on learning and today's technology. Our vision is of a regional career college that reaches out to form partnerships with alumni, employers, educational institutions, and the community.

