



**EDUCATION | CONSULTING | ADVISORY SERVICES**

**Visit our website to know more:**

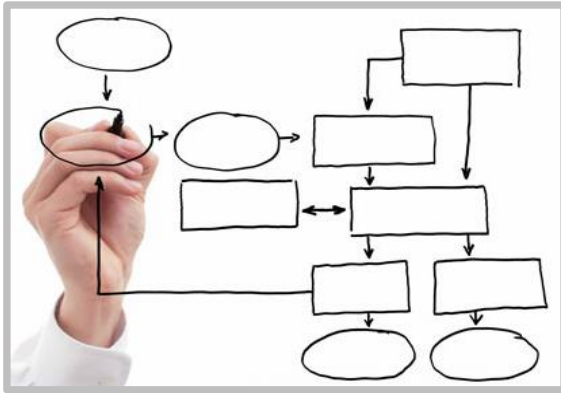
**[WWW.AJITASAPCONSULTING.COM](http://WWW.AJITASAPCONSULTING.COM)**

**Contact us:**

**[info@ajitasapconsulting.com](mailto:info@ajitasapconsulting.com)**



Who are we?



**Process Experts**



**Passionate for Technology**



**Love to share knowledge**

What we do?



**Niche Consulting & Value Added Services**



**Targeted Consulting**



**SAP Education Services**



**Staffing Services**



# Our Customer Reach..



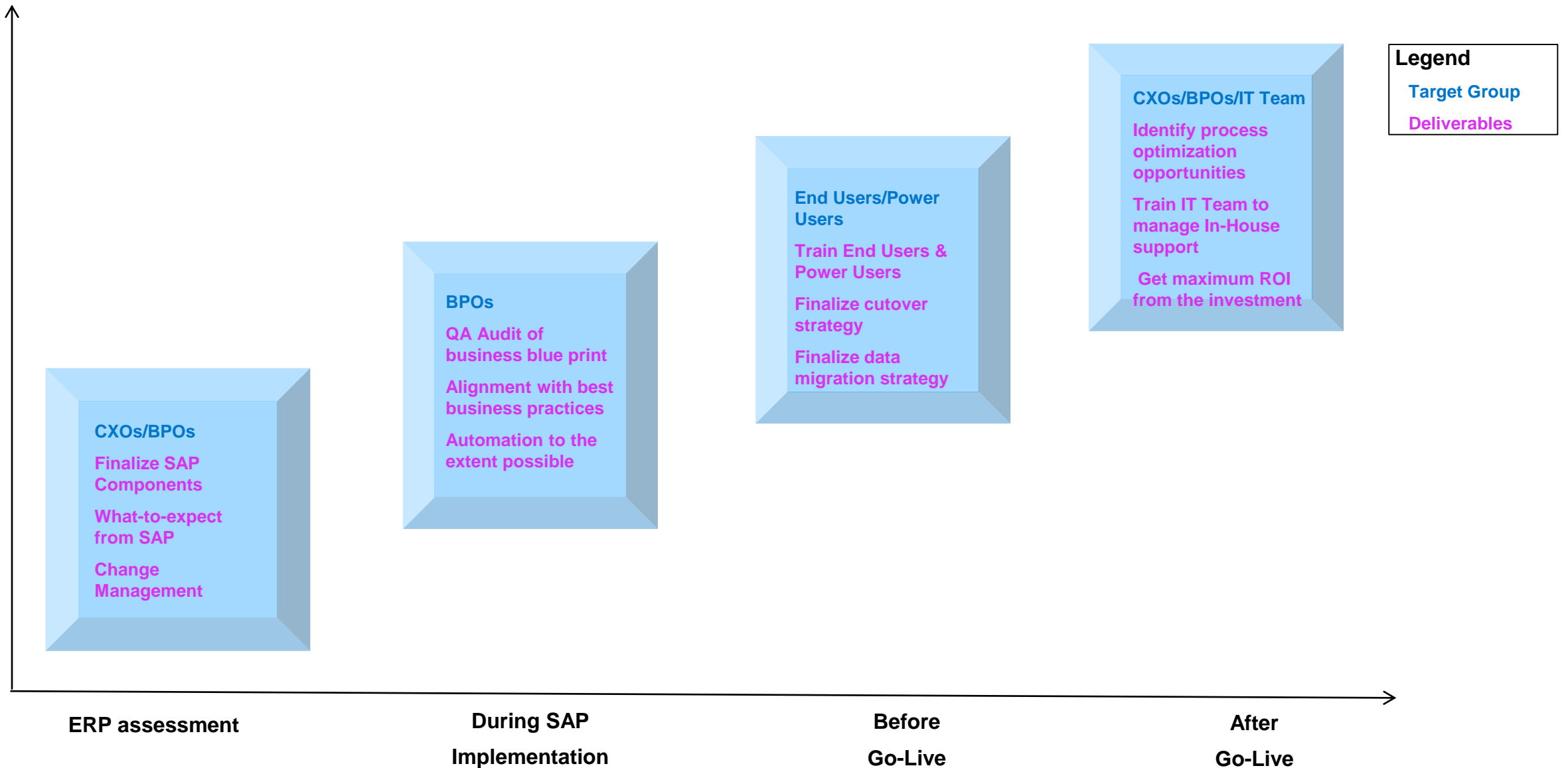


# Various professional blogs and white papers by us

Sr. No	Blog / White Paper	Category
01	<u><a href="#">Profit Center derivation in various scenarios</a></u>	SAP – Functional
02	<u><a href="#">Decoding the cost-object mapping framework in SAP Central Finance</a></u>	SAP - Functional
03	<u><a href="#">Demystifying the Ledger Currency Setup and Currency Conversion in SAP S/4 HANA Finance</a></u>	SAP – Functional
04	<u><a href="#">How to Set Up Parallel Asset Accounting in SAP S/4HANA Finance with Differing Fiscal Year Variants</a></u>	SAP – Functional
05	<u><a href="#">A holistic approach to implementing Central Finance</a></u>	SAP - Functional

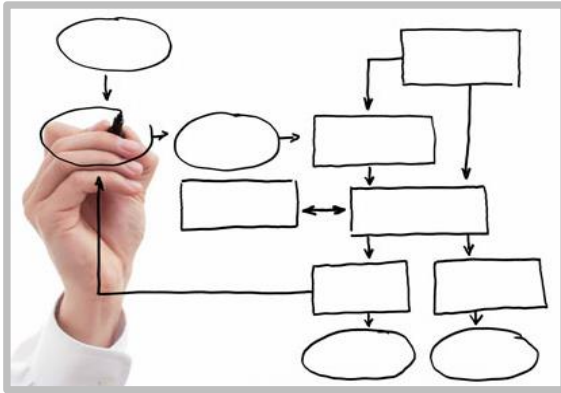


# We collaborate with customers throughout their SAP Journey





Who are we?



**Process Experts**



**Passionate for Technology**



**Love to share knowledge**

What we do?



**Niche Consulting & Value Added Services**



**Targeted Consulting**



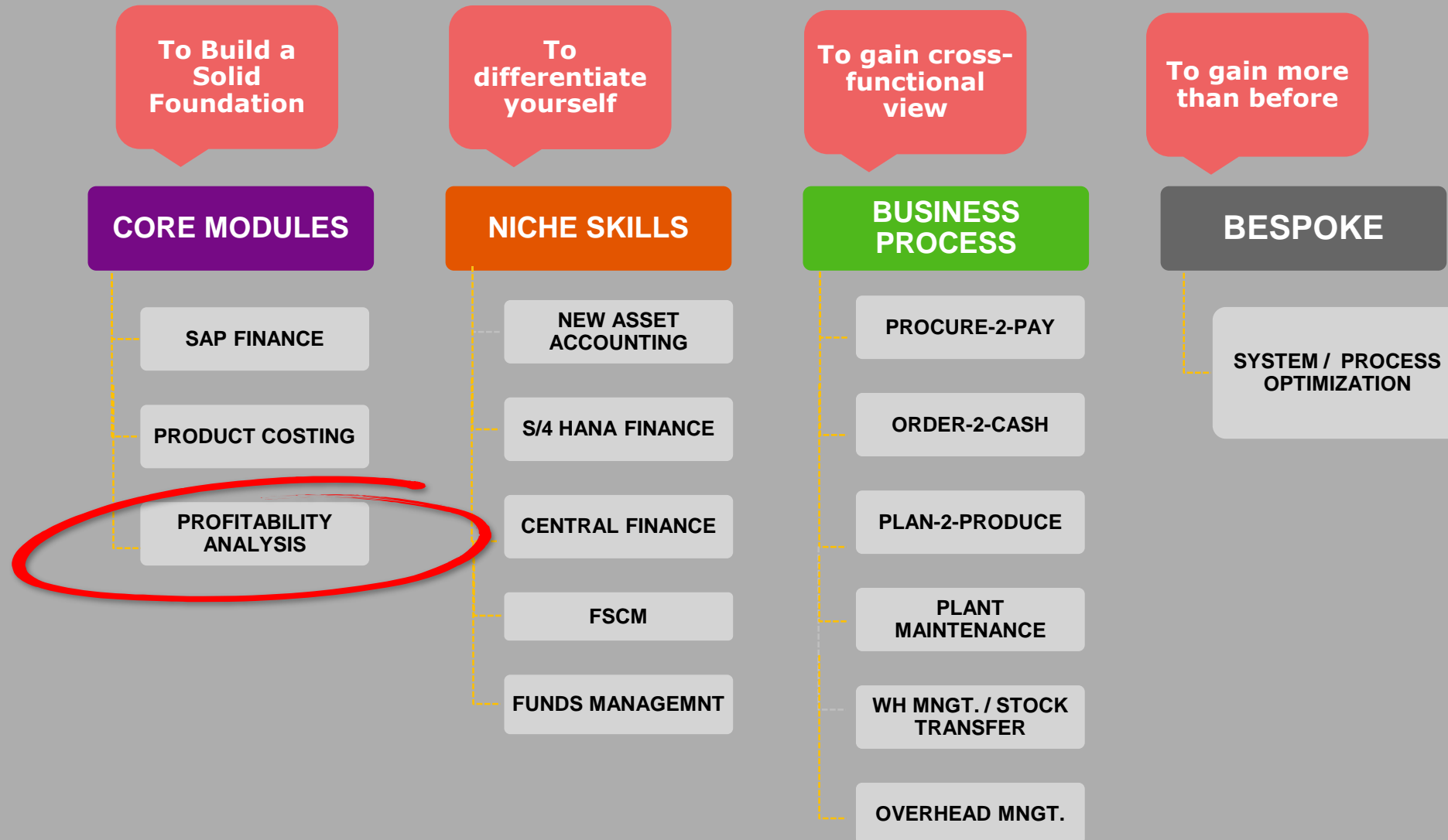
**SAP Education Services**



**Staffing Services**



# Our SAP Education Offerings





# Training methodology

- A perfect blend of SAP courses and trainer's rich expertise
- Each topic is covered the following way:
  - ❖ WHY it is relevant to the business?
  - ❖ HOW it is to be enabled? [the configuration]
  - ❖ WHAT master data does it need to execute the process?
  - ❖ HOW to execute the process?
  - ❖ WHEN to execute the process? [daily, period end, yearly, etc.]
  - ❖ WHAT questions to be asked during requirement gathering?
  - ❖ WHERE the data is stored and how to retrieve? [The SAP Tables]
  - ❖ WHAT are the possible enhancement options? [User exit, BADI,BAPI, Function Modules, etc. ]
  - ❖ WHAT reports are available for the process?





## COPA [Controlling – Profitability Analysis]

Topic	Content
Overview of Profitability Analysis & Enterprise structure Set up	<ul style="list-style-type: none"><li>▪ Overview of COPA – Why is COPA needed?</li><li>▪ Difference between COPA and Profit Center Accounting</li><li>▪ Different types of COPA and their evaluation</li><li>▪ COPA Transaction Data Structure</li><li>▪ SAP Enterprise Structure including Operating Concern</li><li>▪ Define Characteristics: Fixed/Referenced/User-Defined</li><li>▪ Set up data structure and Operating concern attributes</li><li>▪ Generate Operating Concern</li><li>▪ Maintain Characteristics Values</li></ul>



## COPA [Controlling – Profitability Analysis]

Topic	Content
Derivation Rules and Value Flow from SD	<ul style="list-style-type: none"><li data-bbox="988 379 1977 422">▪ Derivation rules: 5 methods offered by SAP</li><li data-bbox="988 454 1712 496">▪ Overview of Actual Value Flows</li><li data-bbox="988 528 1768 571">▪ Value flow from SD – Sales Order</li><li data-bbox="988 602 1640 645">▪ Value flow from SD – Billing</li></ul>



## COPA [Controlling – Profitability Analysis]

Topic	Content
Value flow from MM/FI/CO	<ul style="list-style-type: none"><li data-bbox="988 379 1480 422">▪ Postings from FI/MM</li><li data-bbox="988 455 1727 498">▪ Postings from CO – Settlements</li><li data-bbox="988 531 1676 574">▪ Posting from CO – Allocations</li><li data-bbox="988 606 2109 701">▪ Real-time derivation of profitability characteristics for Internal Order postings</li></ul>



## COPA [Controlling – Profitability Analysis]

Topic	Content
Information System and Expert Tools	<ul style="list-style-type: none"><li>▪ Designing drill down reports from COPA</li><li>▪ Expert Tools<ul style="list-style-type: none"><li>❖ User Exits</li><li>❖ Function Modules / BAPIs</li><li>❖ COPA Realignment</li><li>❖ Top-Down Distribution</li></ul></li></ul>



## Other details

- All sessions are online
- Course Duration: 15-20 hours
- Corporate Training available on request



Thank you Thank you  
Grazie Grazie  
Tack Tack  
Merci Merci  
谢谢 谢谢  
Dhanya-waadh Dhanya-waadh  
Obrigado Obrigado

