



## **AUTHORIZED SEND**

efficient workflow  
security features  
streamlined productivity

**SOFTWARE SOLUTIONS**



## Authorized Send V5.4

A powerful, integrated, serverless document distribution application with the ability to help users safeguard certain office communications.



**AUTHORIZED SEND**



### Authentication Server

- Windows® 2000/2003/2008/2012
- Lotus® Domino, Version 7
- Novell® NetWare® 6.5/eDirectory 8.7
- Anonymous

### Scan and Send



- Microsoft® SharePoint Server 2007/2010/2013



- E-mail



- Fax



- iFax (E-mail gateway of Fax Server)



- SMB Folder



- FTP and S-FTP



- One-Touch Button



- Multidestination



- Advanced Box

### Ad-hoc and Predefined File Name

### Send Documents with Metadata

Thousands of offices, businesses, and government organizations around the world rely on Canon imageRUNNER® ADVANCE systems for copying, printing, scanning, and faxing. These powerful machines are renowned for providing outstanding productivity and efficiency in document workflows. Yet, as technology has made sending digital information to e-mail and network locations possible at the press of a button, the security of the documents at every stage of their life cycle has become a critical part of office workflows. Company policies and government regulations increasingly require stringent controls to help protect the privacy of information.

Organizations need to be able to:

- maintain productivity by allowing users to perform normal walk-up operations, such as basic copying, without locking down the device;
- restrict scanning and sending capabilities to authorized users while controlling who can receive transmitted documents; and
- reduce administrative burdens for MFP and document management.

The Canon Authorized Send (A-SEND) V5.4 solution is an embedded, serverless application built on Canon's MEAP® (Multifunctional Embedded Application Platform) architecture. It provides a consistent interface

for accessing document scanning and distribution while helping to deliver peak productivity on Canon MEAP-enabled imageRUNNER and imageRUNNER ADVANCE MFPs.

## Security Features

Authorized Send now supports both SFTP (SSH File Transfer Protocol) and S/MIME\* (Secure/Multipurpose Internet Mail Extensions).

Users can scan and send documents from Authorized Send to their SFTP server which occurs entirely over a single secured channel.

\* Installation of optional Smart Card Service requires Professional Services, which are sold separately.

# Share information, documents, and ideas efficiently.

## The Authentication Advantage

With Canon Authorized Send installed on your Canon MEAP-enabled imageRUNNER or imageRUNNER ADVANCE system, authorized users can send scanned documents via e-mail, fax,\* and fax servers. Scanned documents can also be sent to an FTP server, SMB folder, Advanced Box, SharePoint Servers, and even multiple destinations with just a few taps of the touch-screen.

Normal walk-up functions, such as copying and Mail Box, are available to any user without authentication. Yet, without impacting everyday access, Authorized Send provides the ability to control document distribution required by many companies and government agencies. It's the mix of security features, flexibility, and productivity.

When the optional Smart Card Service (SCS)\*\* is installed on an imageRUNNER or imageRUNNER ADVANCE system, Authorized Send can support Common Access Card (CAC) environments and authenticates against Public Key Infrastructure (PKI) and Personal Identity Verification (PIV) servers, helping to improve productivity and help reduce security vulnerabilities.

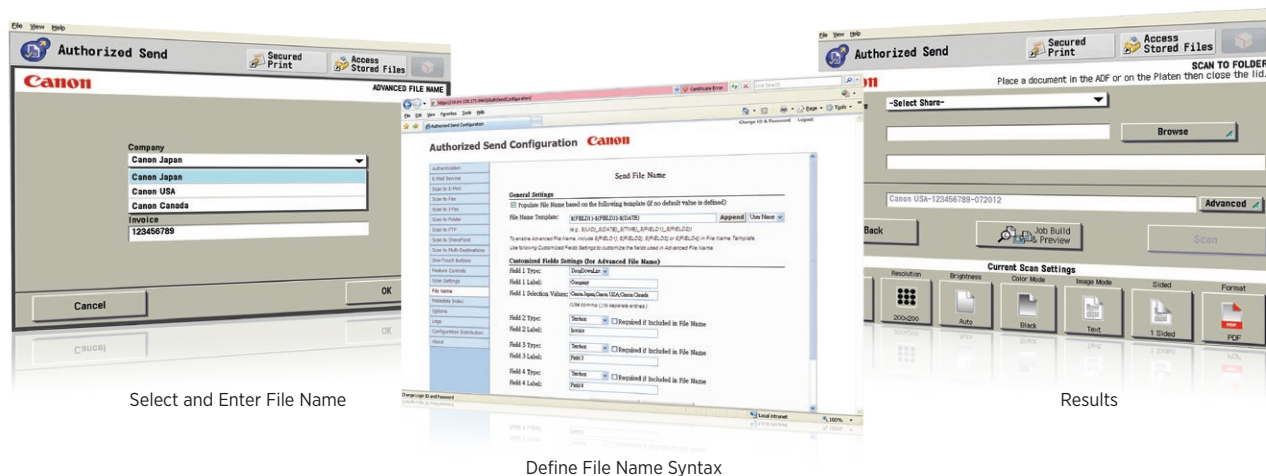
## Fast, simplified distribution

Authenticated users simply log-in to Authorized Send with their user name and password or smart cards to access Authorized Send and its functions. Scanned documents can then be distributed quickly to preset groups of approved recipients. Authorized users can also create new folders to store, archive scanned documents, or just send to specific individuals.

## Intuitive Operation

Users entering their name and password have quick access to a simple touch-screen interface that puts Authorized Send controls and choices at their fingertips. The Job-Build function lets users scan multiple documents and send them by e-mail or to pre-determined folders. Standardized buttons control scanning and faxing functions that can be quickly adjusted for paper size, image resolution, brightness, colors, image mode, simplex or duplex, and file format. Addresses of recipients can be automatically pre-populated as the destinations and users can search the address book for additional names or add new ones as needed.

Administrators can create "Favorite" One-Touch buttons based on users' common requirements, thereby providing simplicity, convenience, and helping to reduce user errors. For example, buttons can be set up for frequently used workflows, destinations, and specific distribution lists.



\* Authorized Send does not support analog fax on the imageRUNNER ADVANCE C2000 Series.

\*\* Installation of optional Smart Card Service requires professional services, which are sold separately.

## Clear File Names

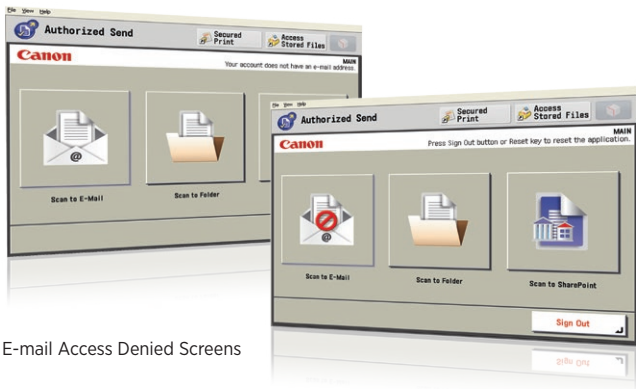
With documents growing in complexity and volume every day, it's more important than ever that file names be easily understood, especially when multiple documents are combined in a single file. Using a syntax pre-defined by the administrator (User Name, Date, Time, Device IP, plus four User Input Fields), Authorized Send users can define and create file names that will make sense to all recipients.

The contents of user input fields can be modified and the scanned document's file name is automatically populated with a user name/time/date stamp to aid tracking.

To further help clarify the information being transmitted, Authorized Send allows the option of adding multiple fields of metadata to documents in XML or Text format, facilitating archiving and ease of use.

## Web Admin User Interface and Configuration Distribution

A Web-based servlet residing on a Canon MEAP-enabled imageRUNNER or imageRUNNER ADVANCE MFP lets administrators configure all scanning, faxing, and distribution settings on a single, similar MFP, then distribute that configuration to other machines. Based on organizational requirements, virtually all features and settings can be enabled or disabled, both globally and for individual users,<sup>†</sup> providing flexibility for users and user access rights where it's desired. Having functions defined by the administrator helps to simplify operation and help ensure that users follow procedures for increased efficiency, device control, and productivity. In addition, the administrator can control the application's images and colors to provide brand identity within the application.



E-mail Access Denied Screens

### Authorized Send At-a-Glance

#### Authentication

- Provides individualized user authentication to help with flexibility and security with rights assigned to users.
- Supports multiple authentication protocols, including Kerberos, NTLM, Simple Binding, and Anonymous Binding<sup>†</sup>
- Enables administrator's authentication, allowing access without end-users having to provide sign-in credentials

<sup>†</sup> Kerberos and NTLM are supported protocols for communicating with a Microsoft® Active Directory Server. Simple Binding is the supported protocol when communicating with Novell eDirectory and Lotus Domino. Anonymous is reserved for communicating with any supported Address Book Servers.

#### Scanning and distribution choices

- Scan documents to e-mail, networked folders, FTP/S-FTP servers and Microsoft® SharePoint® Servers (2007/2010/2013), analog fax lines, fax servers, Advanced Box, or multiple destinations.
- Scan to SMB folder, including user's Home Folder and Shared Folders.
- Support Distributed File System (DFS) for stand-alone DFS root folders and Share Clustered File Servers.
- Create image or PDF documents.
- Browse sub-folders to store related documents.
- Create up to 8 fields of metadata and include with scanned documents for enhanced identification and tracking.
- Easily rescan and send documents to same destination repeatedly.
- Transmit documents automatically to users' Home Folder.
- Create file names using pre-defined syntax at Canon MEAP-enabled imageRUNNER ADVANCE MFPs.

<sup>†</sup> To assign rights to individual user level, a Log-in application (SSO-H or AA-PROX) and Access Management System (AMS) are required, which are sold separately.



## Authorized Send V5.4

# Serverless and easy to use with the ability to help safeguard certain communications.

Authorized Send can be easily configured. It's designed to tap into your organization's existing workflow while helping users increase efficiency and productivity.

### Serverless

Shifting hosting, processing, storage, and input/output onto a single device eliminates the need to invest in, and support, costly dedicated application servers. Excellent for environments with large storage requirements yet relatively few applications, serverless technology is well suited for offices where printing, scanning, and faxing are parts of a mission-critical workflow. Authorized Send takes the pressure off users and administrators by letting them focus on their jobs, without worrying about server reliability and performance.

### User Access Control

The customizable Authorized Send makes it ideal for many corporate environments and select government agencies or departments. It provides the control and accountability needed for documents, from scanning through distribution.

### Streamlined Distribution and Deployment

Authorized Send raises the bar on convenience and efficiency. Documents can be seamlessly scanned and distributed to a variety of destinations from a single MFP with just the touch of a few buttons. It's easy to set up in multiple offices to ensure the same features and settings in each location.

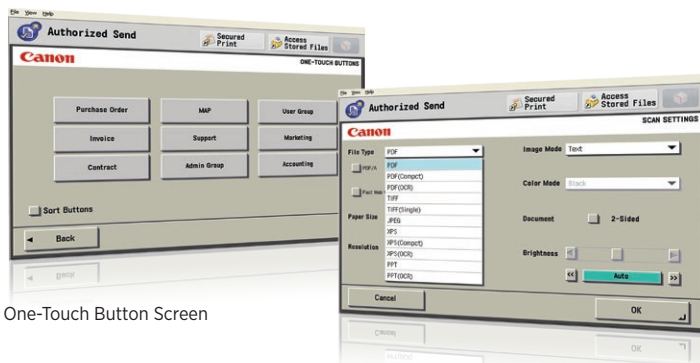
With Authorized Send and your Canon MEAP-enabled imageRUNNER or imageRUNNER ADVANCE system, you get powerful document distribution for your critical business communications.

### Overview of AA CAC V1.4

#### Advanced Authentication CAC

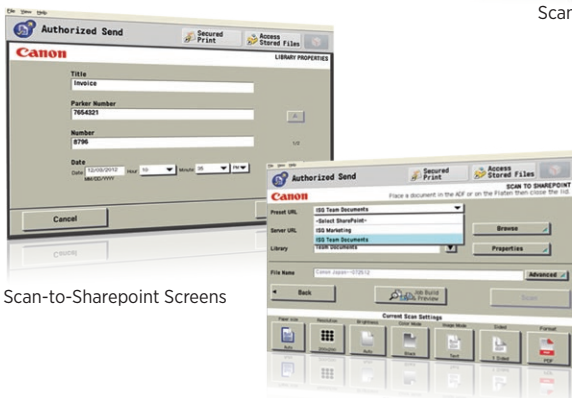
The Advanced Authentication CAC (AA CAC) software is an integrated MEAP application. It should be installed and operated on a supported Canon MEAP-enabled device. AA CAC enables a domain user to authenticate to a MEAP-enabled device via a supported and valid smart card or, alternatively, by manually entering their user name and password. AA CAC is compatible with AMS and device-level or function-level log-ins.

AA CAC can be configured for remote (Active Directory) role management via its configuration servlet. AA CAC also provides function-level restrictions, secure printing, device- and function-level log-in capabilities, and does not interfere with any of the MEAP devices's built-in functions, such as Copy, Print, and Scan.



One-Touch Button Screen

Scan Settings Screen



Scan-to-Sharepoint Screens

**AUTHORIZED SEND**

## Specifications

### Authentication Server

Windows 2000 SP4/2003 SP2/2008 Standard SP2/2012 Active Directory

Lotus Domino, Version 7

Novell NetWare 6.5/eDirectory 8.7 SP1

### Authentication Protocols

Kerberos

NTLM

Simple Binding

Anonymous Binding

### Address Book Server

Windows 2000 SP4/2003 SP2/2008 Standard SP2/2012 Active Directory

Lotus Domino, Version 7

Novell Netware 6.5/eDirectory 8.7 SP1

### Name Server

Windows 2000 SP4/2003 SP2/2008 Standard SP2/2012 DNS Server

### Scan to E-mail

Exchange 2000/2003/2007/2010 SP1/2013

Gmail Web mail Service

Office 365

### Scan-to-Network Share

Local Share

- Windows Vista® SP1/XP SP2/2000 SP4/2003 SP2/2008 Standard SP2/2012/ Advance Box on imageRUNNER ADVANCE MEAP devices (NTLM V2)

Domain Share

- Windows Vista SP1/XP SP2/2000 SP4/2003 SP2/2008 Standard SP2/2012

Windows Distributed File System (DFS) Share

- Windows Vista SP1/XP SP2/2000 SP4/2003 SP2/2008 Standard SP/2012

SharePoint Server

- 2007/2010/2013

### Scan-to-Fax Server

Relay Fax 6.7 by ALT-N Technologies

### Web Servlet Browser

Internet Explorer 6.0 or later with JavaScript enabled

KDC is necessary for running Kerberos authentication

### Supported Models

#### imageRUNNER ADVANCE MFP

imageRUNNER ADVANCE C9280 PRO/C9270 PRO

imageRUNNER ADVANCE C9075/C9065/C7065/C7055

imageRUNNER ADVANCE C7280i/C7270/C7270i/C7260/C7260i

imageRUNNER ADVANCE 8205 PRO/8295 PRO/8285 PRO

imageRUNNER ADVANCE C5255/C5250/C5240/C5235

imageRUNNER ADVANCE C5045/C5035/C5030

imageRUNNER ADVANCE C2230/C2225

imageRUNNER ADVANCE C2030/C2020\*

imageRUNNER ADVANCE C350iF/C250iF\*

imageRUNNER ADVANCE 8205/8295/8285

imageRUNNER ADVANCE 8105/8095/8085

imageRUNNER ADVANCE 6275/6265/6255

imageRUNNER ADVANCE 6275i/6265i/6255i

imageRUNNER ADVANCE 6075/6065/6055

imageRUNNER ADVANCE 4251/4245/4235/4225

imageRUNNER ADVANCE 4051/4045/4035/4025

imageRUNNER ADVANCE 500iF/400iF\*

#### Color imageRUNNER/imageRUNNER MFP

Color imageRUNNER C5068/C5058

Color imageRUNNER C5185

Color imageRUNNER C5180/C4580/C4080 V2

Color imageRUNNER C3380/C2880 V2

Color imageRUNNER C3380/C2880

Color imageRUNNER C3480/C3080/C2550

imageRUNNER 7105/7105B/7095/7095P/7086/7086N/7086 B V2

imageRUNNER 5075/5065/5055 V2

imageRUNNER 5075/5065/5055

imageRUNNER 5050

imageRUNNER 3045/3035/3030/3025

imageRUNNER 3245/3235/3230/3225

#### imagePRESS® Digital Press

imagePRESS C7000VP/C6000VP/C6000

imagePRESS C1/C1+

\* Scan-to-fax is not supported on these devices.

WWW.USA.CANON.COM



Microsoft, SharePoint, and Windows are either registered trademarks or trademarks of Microsoft Corporation in the United States and/or other countries. Canon, imageRUNNER, imagePRESS, and MEAP are registered trademarks of Canon Inc. in the United States and may also be registered trademarks or trademarks in other countries. All other referenced product names and marks are trademarks of their respective owners. All screen images are simulated. Specifications and availability subject to change without notice. Not responsible for typographical errors.

©2015 Canon U.S.A., Inc. All rights reserved.

0415R2-ASend-PDF-IH