

EJSCREEN Report API Instructions

1. Introduction

The EJSCREEN Report API is used to build queries to return the data in JSON for the EJSCREEN report and a URL that can be used to hyperlink the EJSCREEN report. It is a RESTful API. An interactive tool is also provided to make it easier to use the API and build the necessary parameters to retrieve the data for an EJSCREEN report. Users can select the input parameters and submit the request. The tool will display the returned EJSCREEN data as well as the syntax that developers need for submitting requests directly to the API in applications.

EJSCREEN Report API tool: <https://ejscreen.epa.gov/mapper/ejscreenapi.html>

EJSCREEN Report API

Point Line Polygon Rectangle Blockgroup Tract County

Note: Use the location box below to find an address or place and then click on the map to draw a polygon (lines cannot cross each other). Double click to end the drawing. Or enter/paste a JSON geometry string in the Geometry box.

Find address or place

Geometry: [{"rings": [[[-87.84346630030817,42.373870848707185],[-87.83574153834529,42.373744031544376], [-87.8359990304107,42.36537353262513],[-87.83883144313045,42.36531011549738], [-87.83883144313045,42.36575403404728],[-87.84346630030817,42.368480893464145], [-87.84346630030817,42.373870848707185]]]]

Buffer Size: 0

Buffer Unit: mile

Format: json

Submit (GET) Submit (POST)

API Url

Copy

[https://ejscreen.epa.gov/mapper/ejscreenRESTbroker.aspx?geometry=\[{"rings": \[\[\[-87.84346630030817,42.373870848707185\], \[-87.83574153834529,42.373744031544376\], \[-87.8359990304107,42.36537353262513\], \[-87.83883144313045,42.36531011549738\], \[-87.83883144313045,42.36575403404728\], \[-87.84346630030817,42.368480893464145\], \[-87.84346630030817,42.373870848707185\]\]\]\]\], "spatialReference": {"wkid": 4326}}&distance=0&unit=9035&areatype=blockgroup&areaid=&f=json](https://ejscreen.epa.gov/mapper/ejscreenRESTbroker.aspx?geometry=[{)

Figure 1. EJSCREEN Report API tool

2. Steps to Build a Query and Retrieve Data

Follow these steps to build a query and retrieve EJSCREEN data and the report from the interactive tool.

1. Select a location input type for the area of interest by selecting one of the radio buttons. The input type can be a geometry or a known-geography. Geometry types allow input of any

EJSCREEN Report API Instructions

arbitrary shape, while known-geography types are census unit areas that are denoted by an ID code.

- Geometry types: point, line, polygon, rectangle area
 - Known-geography types: Census block group, Census tract, county
2. In the search box on the map, enter a location or address. Click the map to obtain values for the input type chosen in the previous step, as follows:
 - Point: Click the map to obtain a single latitude/longitude point location.
 - Line: Click a series of points on the map to draw a line. Double-click to end the drawing.
 - Polygon: Click a series of points on the map to draw a polygon. Double-click to end the drawing.
 - Rectangle: Click the map at the location of one corner of a rectangle and drag the mouse to draw a box. Release the mouse at the opposite corner of the rectangle to finish.
 - Blockgroup, Tract, or County: Click the map to retrieve the entity ID (FIPS Code) for each type of selected known-geography.
 3. Geometry parameter: When any input is finalized, the Geography text box will be automatically populated with the correct values for the API parameters. Although this box can be manually populated, it is recommended that the user interact with the map as described in previous steps to obtain or update the geometry.
 4. Buffer Size: Enter a size for the buffer, which is the distance from the input location that will be included for the report. The buffered area plus the original location constitutes the study area. For a Point or Line input, the Buffer Size cannot be zero (0). For all other types, a Buffer Size of 0 can be entered; this will include the study area only, with no additional buffer.
 5. Buffer Unit: Choose the distance unit (mile or kilometer) represented by the Buffer Size.
 6. Format: Two options are available for the results format, JSON and Report.
 - Select *json* to return the EJSCREEN values for the study area in JSON format. This format is typically used by other applications to read and display information as needed.
 - Select *report* to generate a URL that can be used as a hyperlink to an EJSCREEN report as if it would be generated by running the EJSCREEN application.
 7. Submit: Click one of the Submit buttons to submit the parameters and return the data. Two buttons are provided to send the parameters via the two standard HTTPS request methods, GET and POST.
 - Click *Submit (GET)* to send a single URL that includes all parameters. The URL will be displayed in a box labeled API Url, and the JSON results will be displayed in a box labeled Results.
 - Click *Submit (POST)* to send all the parameters to the API endpoint as a POST method. The endpoint and all parameters will be displayed in a box labeled API Url, and the JSON results will be displayed in a box labeled Results.
 8. Copy: Click a *Copy* button to copy the content in the box below to the clipboard.

Note: If the format type is report, the Results section will show a full EJSCREEN report. If the format type is json, a link labeled Field Description will be displayed next to the Results header. Clicking the link will display the field description page.

EJSCREEN Report API Instructions

3. Use Cases

The following illustrate two examples of how to use the EJSCREEN Report API.

3.1. Use Case #1: Generate an EJSCREEN report around a point of interest using the JSON option.

1. Select the radio button for input type of *Point*.
2. In the search box, type “Baton Rouge, Louisiana”. The map will zoom to the area of Baton Rouge, Louisiana.
3. Click on the map to pinpoint the location. The Geometry text box below the map will display the latitude and longitude coordinates for the point in JSON.
4. In the Buffer Size field, enter “1”.
5. From the Buffer Unit dropdown list, select *mile*.
6. From the Format dropdown list, select *json*.
7. Click the *Submit (GET)* button.

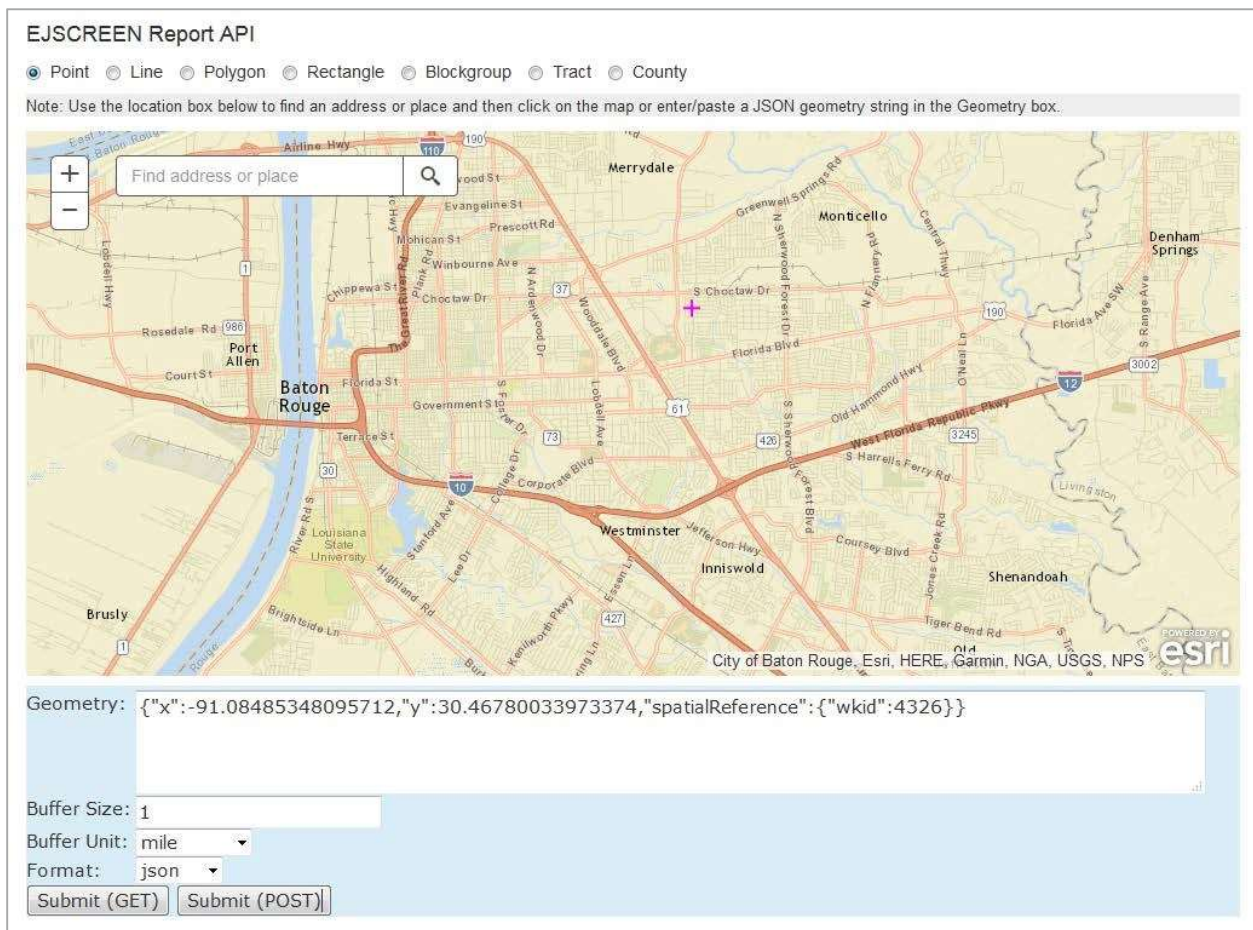
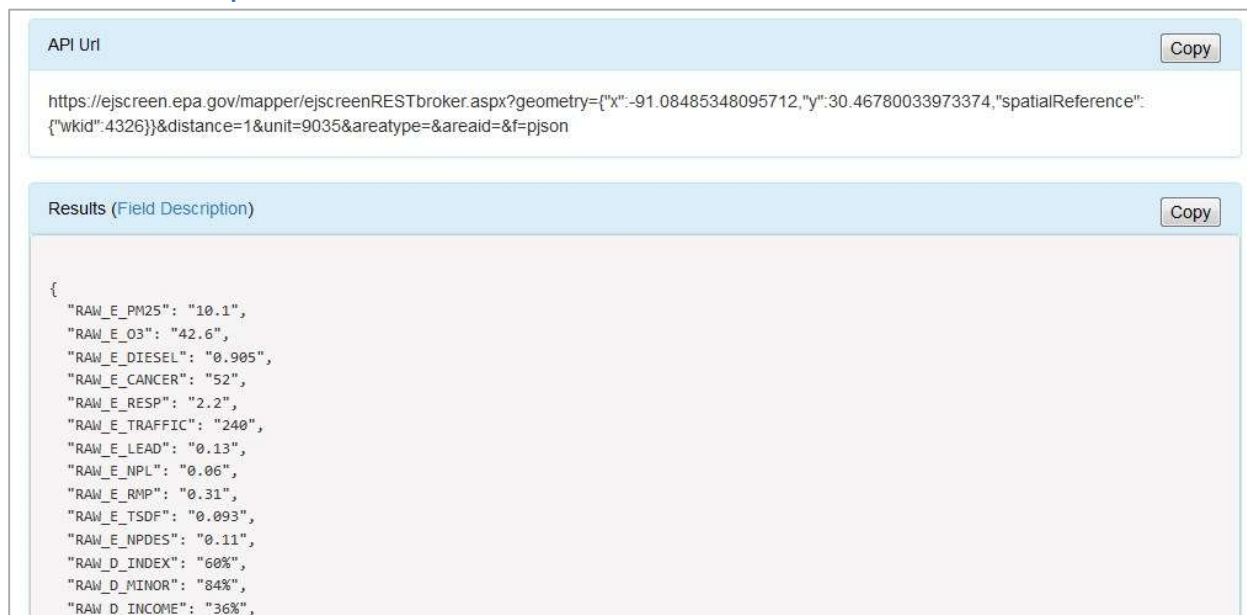


Figure 2. Use Case #1 Steps

The results will be generated in JSON format and displayed in the Results section.

EJSCREEN Report API Instructions



The screenshot displays two main sections. The top section, titled "API Uri", contains a RESTful URL for fetching EJSCREEN report data in JSON format for a specific point location with a one-mile buffer. The bottom section, titled "Results (Field Description)", displays the resulting JSON data, which lists various environmental and demographic indicators and their values.

```
https://ejscreen.epa.gov/mapper/ejscreenRESTbroker.aspx?geometry={"x":-91.08485348095712,"y":30.46780033973374,"spatialReference":{"wkid":4326}}&distance=1&unit=9035&areatype=&areaid=&f=json
```

```
{
  "RAW_E_PM25": "10.1",
  "RAW_E_O3": "42.6",
  "RAW_E_DIESEL": "0.905",
  "RAW_E_CANCER": "52",
  "RAW_E_RESP": "2.2",
  "RAW_E_TRAFFIC": "240",
  "RAW_E_LEAD": "0.13",
  "RAW_E_NPL": "0.06",
  "RAW_E_RMP": "0.31",
  "RAW_E_TSDI": "0.093",
  "RAW_E_NPDES": "0.11",
  "RAW_D_INDEX": "60%",
  "RAW_D_MINOR": "84%",
  "RAW_D_INCOME": "36%",
```

Figure 3. Use Case #1 Results

For the json format, click the Field Description hyperlink next to the Results header. The field descriptions will be displayed.

The RESTful URL shown in the API Uri box is what is needed to fetch the EJSCREEN report data in JSON for the selected point location with one mile of buffer.

3.2. Use Case #2: Generate an EJSCREEN report for a Census block group using the report option.

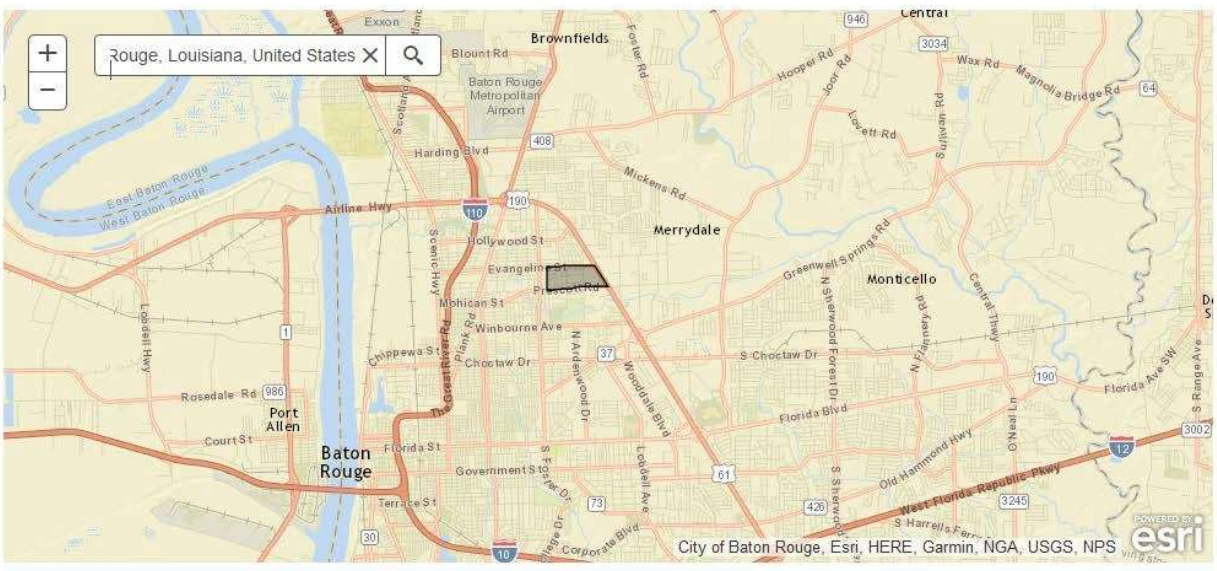
1. Select the radio button for input type of *Blockgroup*.
2. In the search box, type "Baton Rouge, Louisiana". The map will zoom to the area of Baton Rouge, Louisiana.
3. Click on the map to select a specific block group. The selected block group will be highlighted on the map. The FIPS Code text box below the map will display the ID for the selected block group.
4. From the Format dropdown list, select *report*.
5. Click the *Submit (GET)* button.

EJSCREEN Report API Instructions

EJSCREEN Report API

Point Line Polygon Rectangle Blockgroup Tract County

Note: Use the location box below to find an address or place. Click on the map to select a Census block group. Or you can enter a FIPS code for the Census block group.



FIPS Code:

Format:

Figure 4. Use Case #2 Steps


The results will be generated in report format and displayed in the Results section.

EJSCREEN Report API Instructions


API Url Copy

https://sdg-gis1.saic.com/ejscreen/EJSCREEN_report.aspx?geometry=&distance=&unit=9035&areatype=blockgroup&areaid=220330002006&f=report

Results



EJSCREEN Report (Version 2017)
 Blockgroup: 220330002006
 LOUISIANA, EPA Region 6
 Approximate Population: 1,524
 Input Area (sq. miles): 0.33



Selected Variables	Percentile in State	Percentile in EPA Region	Percentile in USA
EJ Indexes			
EJ Index for Particulate Matter (PM 2.5)	85	74	83
EJ Index for Ozone	85	72	83
EJ Index for NATA* Diesel PM	87	83	85
EJ Index for NATA* Air Toxics Cancer Risk	88	82	88
EJ Index for NATA* Respiratory Hazard Index	90	84	87
EJ Index for Traffic Proximity and Volume	82	72	78
EJ Index for Lead Paint Indicator	88	86	85
EJ Index for Superfund Proximity	87	81	84
EJ Index for RMP Proximity	91	86	91
EJ Index for Hazardous Waste Proximity	95	90	92
EJ Index for Wastewater Discharge Indicator	N/A	63	76

EJ Index for the Selected Area Compared to All People's Blockgroups in the State/Region/US

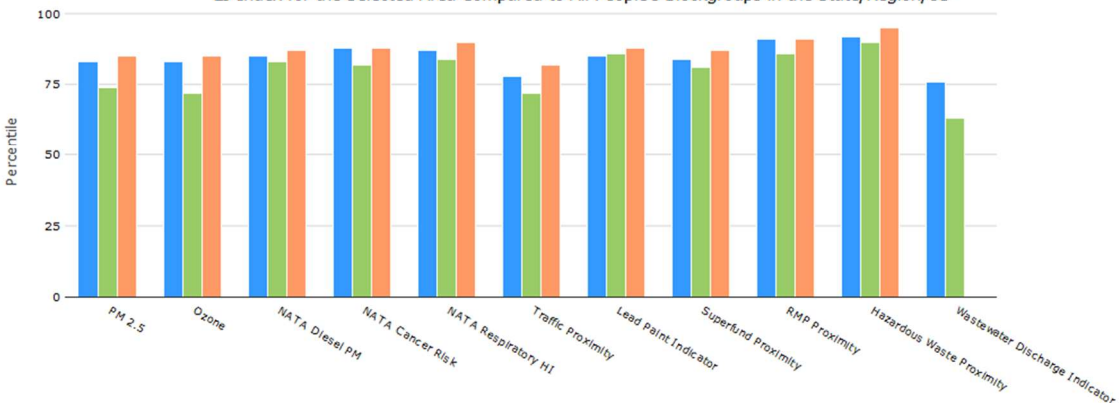


Figure 5. Use Case #2 Results

The URL shown in the API Url box is what is needed to call the EJSCREEN report for the selected Census block group, as shown in the Results box.

EJSCREEN Report API Instructions

Appendix A: Field Descriptions

An EJScreen report contain four sections of information: EJ Indexes, Sites Reporting to EPA, Environmental Indicators, and Demographic Indicators. Please visit this webpage for data element description - <https://ejscreen.epa.gov/mapper/ejsoefielddesc.html>