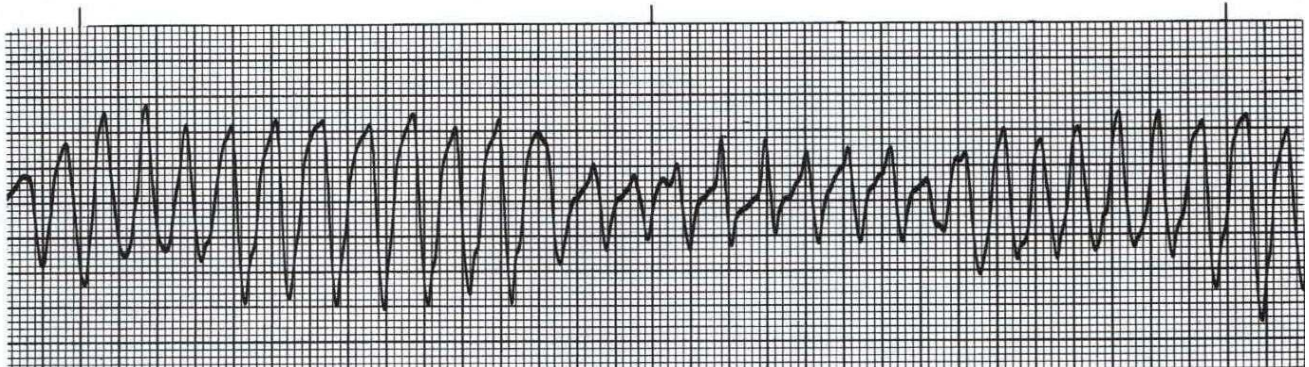




Name: _____ Date: _____ ID# _____ Unit _____

Assume each strip is a 6 second strip. Passing is 80%.

1. Identify the following rhythm:

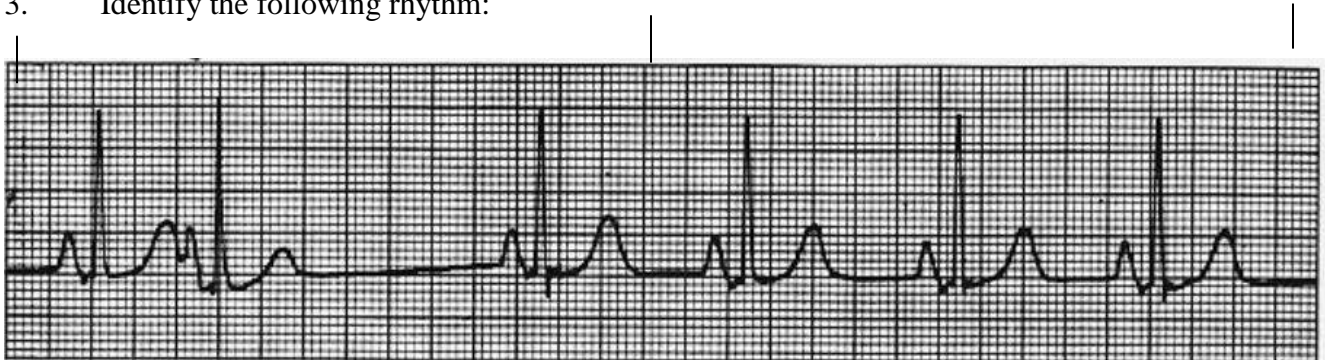


- a. Asystole
- b. Ventricular fibrillation
- c. Atrial fibrillation
- d. Torsade de pointes

2. What is the most appropriate treatment for this patient?

- A. Call the Code team, defibrillate, and administer Magnesium Sulfate.
- B. Call MD, review medications.
- C. Call the Rapid response team and prepare for pacemaker.
- D. Call the Rapid response team, do vagal maneuvers, prepare for Cardioversion.

3. Identify the following rhythm:



- a. Normal sinus rhythm
- b. Sinus bradycardia
- c. Sinus rhythm with premature atrial contraction
- d. Sinus arrhythmia

4. Identify the following rhythm:



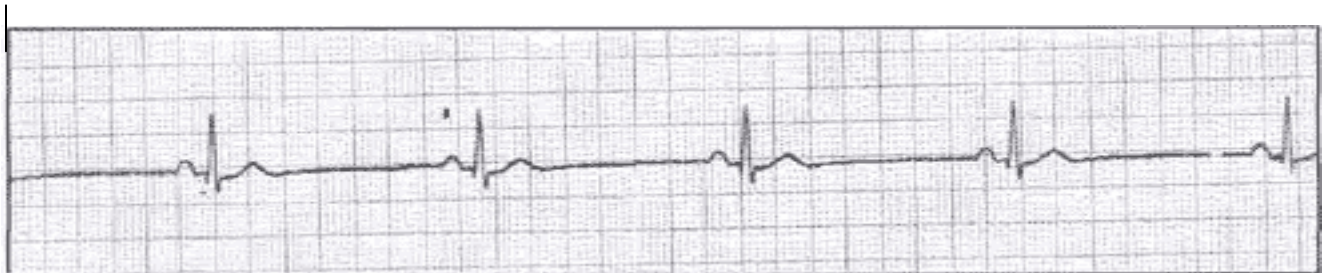
- a. Atrial fibrillation
- b. Sinus tachycardia
- c. Junctional rhythm
- d. Atrial flutter

5. What is this rhythm?



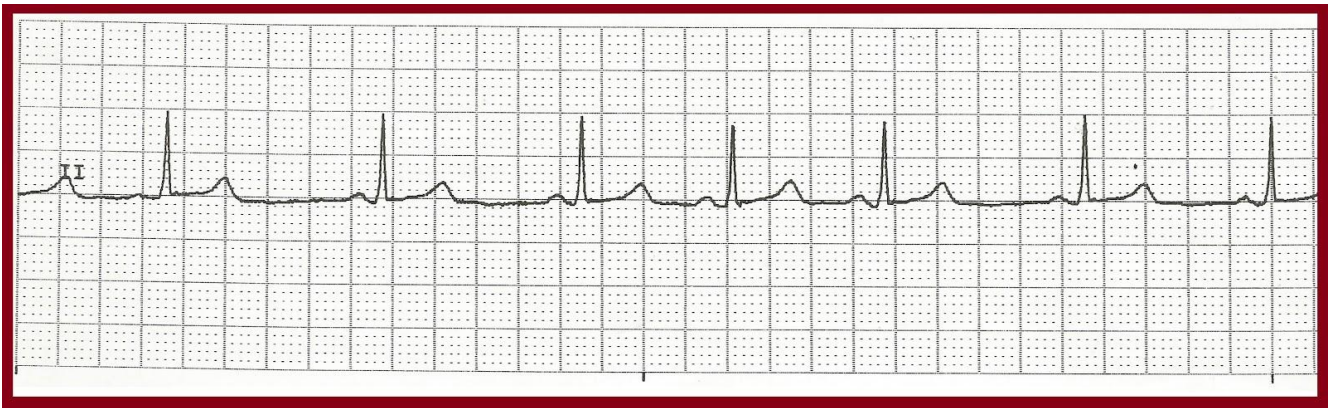
- a. Sinus tachycardia
- b. Normal sinus rhythm
- c. Sinus bradycardia
- d. Junctional tachycardia

6. Identify the following rhythm



- a. Normal sinus rhythm
- b. Sinus bradycardia
- c. Junctional rhythm
- d. Idioventricular rhythm

7. Identify the following rhythm:

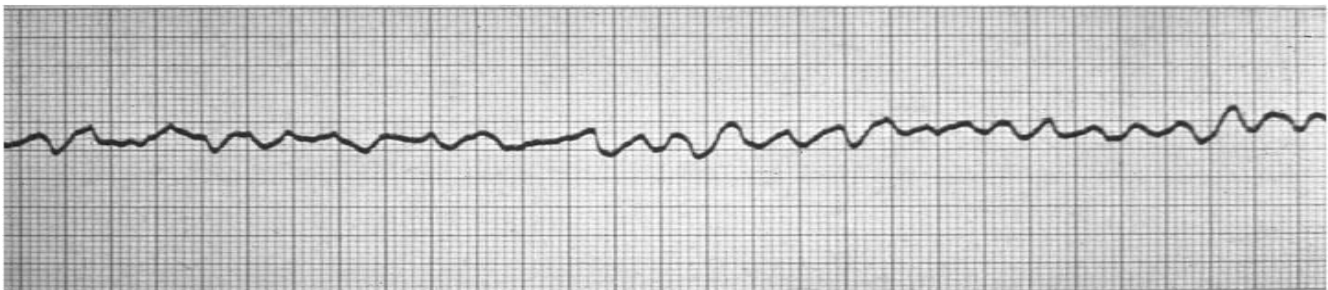


- a. Normal sinus rhythm
- b. Sinus rhythm with a premature junctional beat
- c. Sinus arrhythmia
- d. Sinus rhythm with a premature atrial contraction

8. What is the most appropriate treatment for this patient (from question#7)?

- A. Call the Rapid response team (if on telemetry), do vagal maneuvers.
- B. Call the Code team, defibrillate, and administer Magnesium Sulfate.
- C. Do nothing, this is a normal rhythm.
- D. Call the Code team, give atropine, prepare for pacemaker.

9. Identify the following rhythm:



- a. Ventricular tachycardia
- b. Asystole
- c. Atrial fibrillation
- d. Ventricular fibrillation

10. The most appropriate treatment for this patient is:

- A. Nothing, this is a normal rhythm.
- B. Call the Code, defibrillate.
- C. Call the Rapid response team (on telemetry), attempt vagal maneuvers, Adenosine.

D. Call the Rapid response team (telemetry), give Atropine.

11. Identify the following rhythm:



- a. Mobitz I
- b. Complete heart block
- c. Mobitz II
- d. Idioventricular rhythm

12. What is the most appropriate treatment for this rhythm?

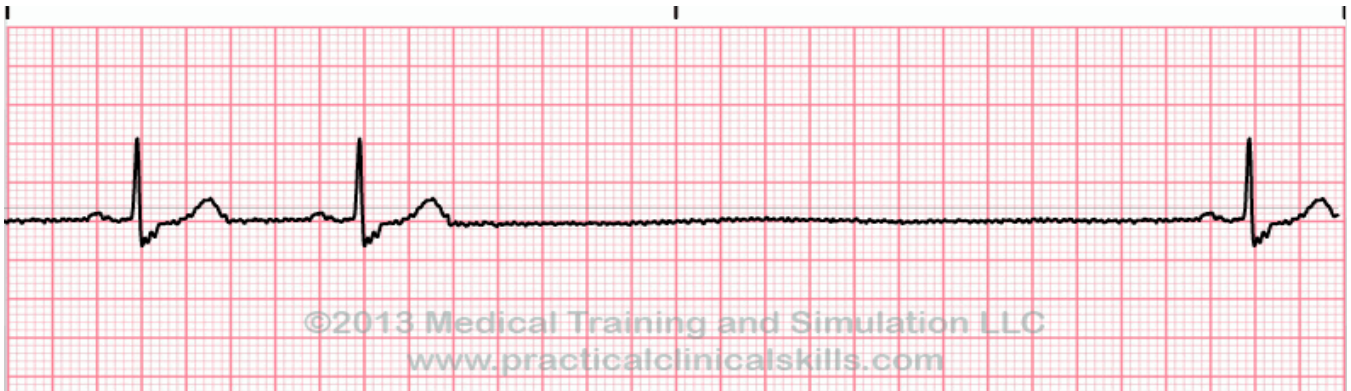
- A. Call the rapid response team or code, prepare for pacemaker.
- B. Call the code, defibrillate patient.
- C. Administer Adenosine.
- D. Prepare for Cardioversion

13. Identify the following rhythm



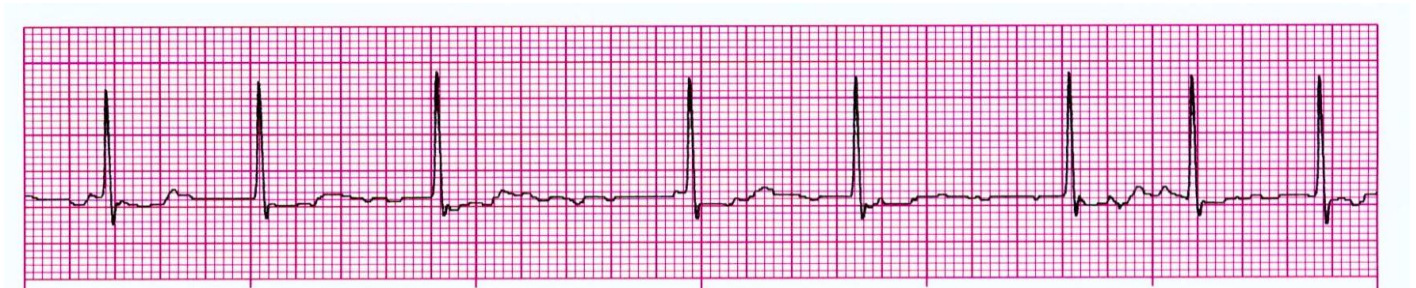
- A. Normal sinus rhythm
- B. Sinus rhythm with premature atrial contraction
- C. Ventricular bigeminy
- D. Mobitz II

14. Identify this rhythm:



- A. Asystole
- B. Sinus bradycardia
- C. Sinus rhythm with a pause
- D. Mobitz I

15. Identify the following rhythm:

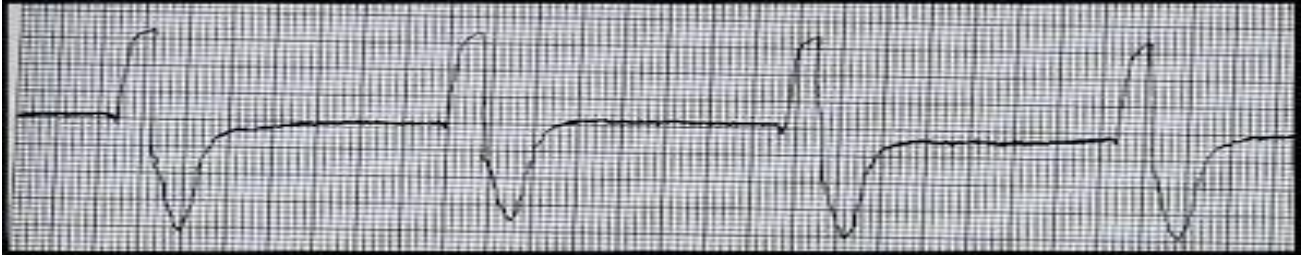


- A. Atrial fibrillation
- B. Sinus arrhythmia
- C. Atrial flutter
- D. Sinus rhythm with premature junctional beats

16. This rhythm is a new onset rhythm for the patient. What is the best treatment?

- A. Assess pt, call MD, review medications, prepare for pacemaker.
- B. Assess, pt, call MD or Rapid response if hemodynamically unstable, review medications, prepare for possible Beta blocker, Ca channel blocker, Digoxin, cardioversion.
- C. Call code, defibrillate
- D. Call Rapid response team, prepare for atropine.

17. Identify the following rhythm:



- A. Sinus bradycardia
- B. Idioventricular rhythm
- C. Junctional rhythm
- D. Accelerated ventricular rhythm

18. Identify this rhythm:



- A. Junctional rhythm
- B. Sinus bradycardia
- C. Idioventricular rhythm
- D. Sinus rhythm with pauses

19. You walk in the patient's room and is unable to arouse. He has no pulse and is not breathing. His monitor shows the following rhythm. Identify the rhythm:

- A. Normal sinus rhythm
- B. Sinus Bradycardia
- C. Pulseless Electrical Activity
- D. First Degree Heart Block



20. Identify this rhythm



- A. Ventricular tachycardia
- B. Supraventricular tachycardia
- C. Atrial fibrillation
- D. Accelerated junctional rhythm

21. What is the best treatment for this patient?

- A. Assess pt, call MD, review medications, prepare for pacemaker.
- B. Assess, pt, call MD or Rapid response if hemodynamically unstable, review medications, prepare for possible Beta blocker, Ca channel blocker, Digoxin, cardioversion.
- C. Call code, defibrillate.
- D. Call Rapid response team, prepare for atropine.

22. Identify this rhythm



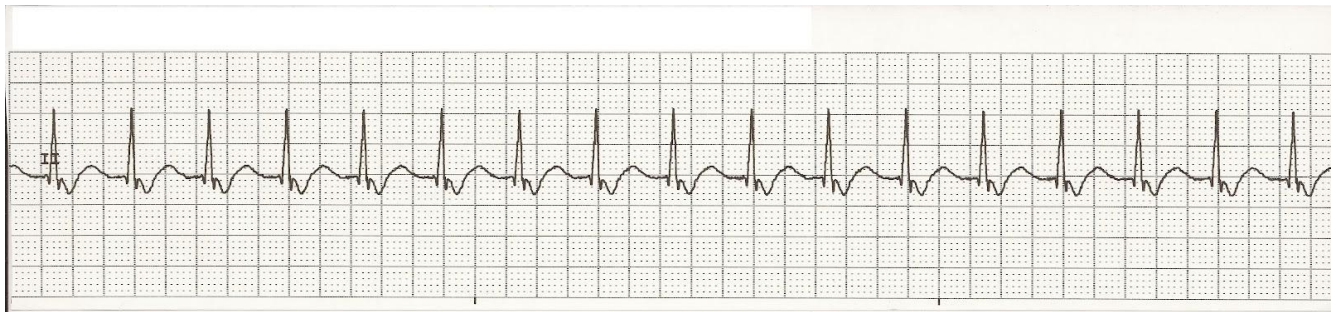
- A. Ventricular fibrillation
- B. Sinus tachycardia
- C. Ventricular tachycardia
- D. Sinus rhythm with PVCs

23. Identify this rhythm



- A. Normal sinus rhythm
- B. Mobitz I
- C. First degree heart block
- D. Sinus bradycardia

24. Identify this rhythm:



- A. Sinus tachycardia
- B. Atrial flutter
- C. Accelerated junctional rhythm
- D. Junctional tachycardia

25. Identify this rhythm



- A. Sinus rhythm with premature atrial contractions
- B. Mobitz I
- C. Sinus rhythm with sinus arrest
- D. First degree heart block